

Data Path : Z:\pestpcbsrv\HPCHEM1\ECD_R\Data\PR040521\
 Data File : PR049768.D
 Signal(s) : Signal #1: ECD1A.ch Signal #2: ECD2B.ch
 Acq On : 05 Apr 2021 10:32
 Operator : DD\AJ
 Sample : AR1660ICC250
 Misc :
 ALS Vial : 6 Sample Multiplier: 1

Integration File signal 1: autoint1.e
 Integration File signal 2: autoint2.e
 Quant Time: Apr 05 10:50:40 2021
 Quant Method : Z:\pestpcbsrv\HPCHEM1\ECD_R\Method\PR040521.M
 Quant Title : GC EXTRACTABLES
 QLast Update : Mon Apr 05 10:38:14 2021
 Response via : Initial Calibration
 Integrator: ChemStation

Volume Inj. : 2 µl
 Signal #1 Phase : ZB-MR2 Signal #2 Phase: ZB-MR2
 Signal #1 Info : 30Mx0.32mmx 0.50µ Signal #2 Info : 30M x 0.32mm x 0.25µm

Compound	RT#1	RT#2	Resp#1	Resp#2	ng/ml	ng/ml

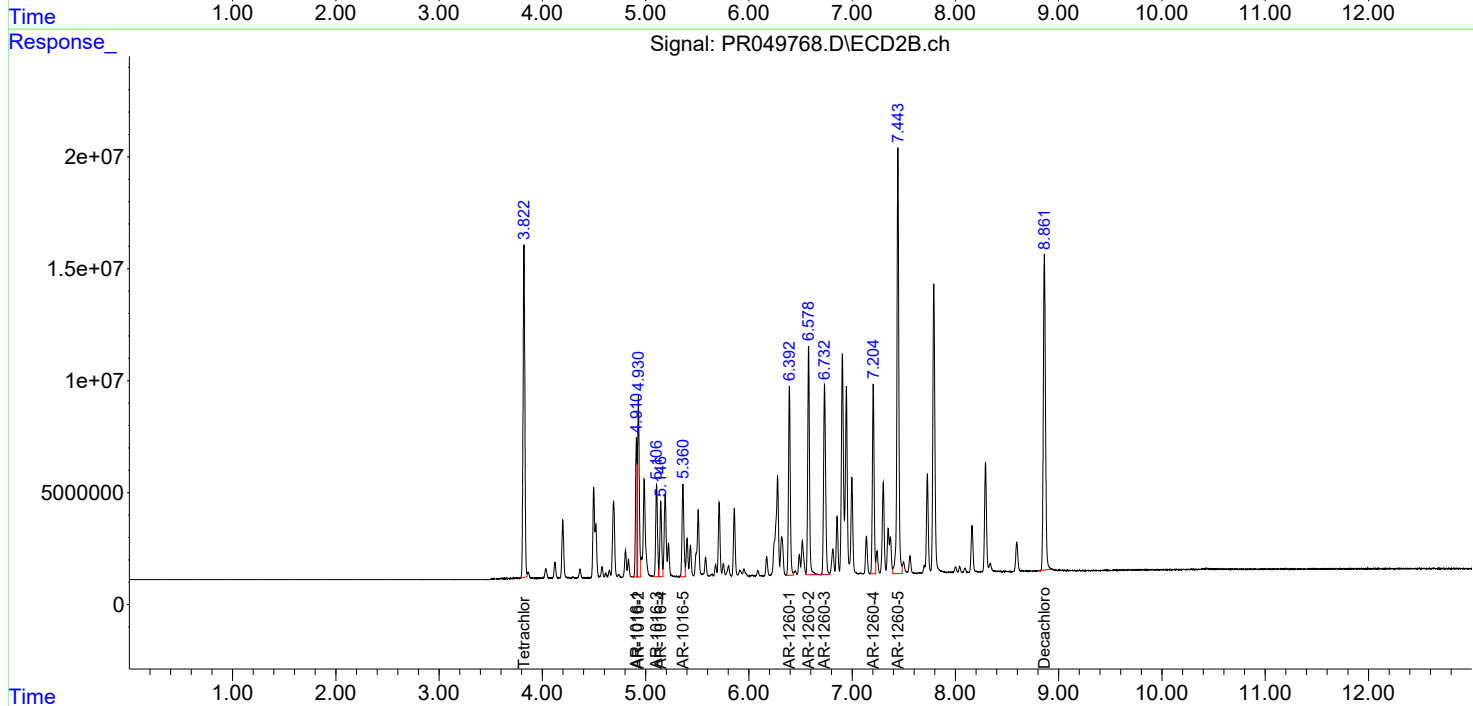
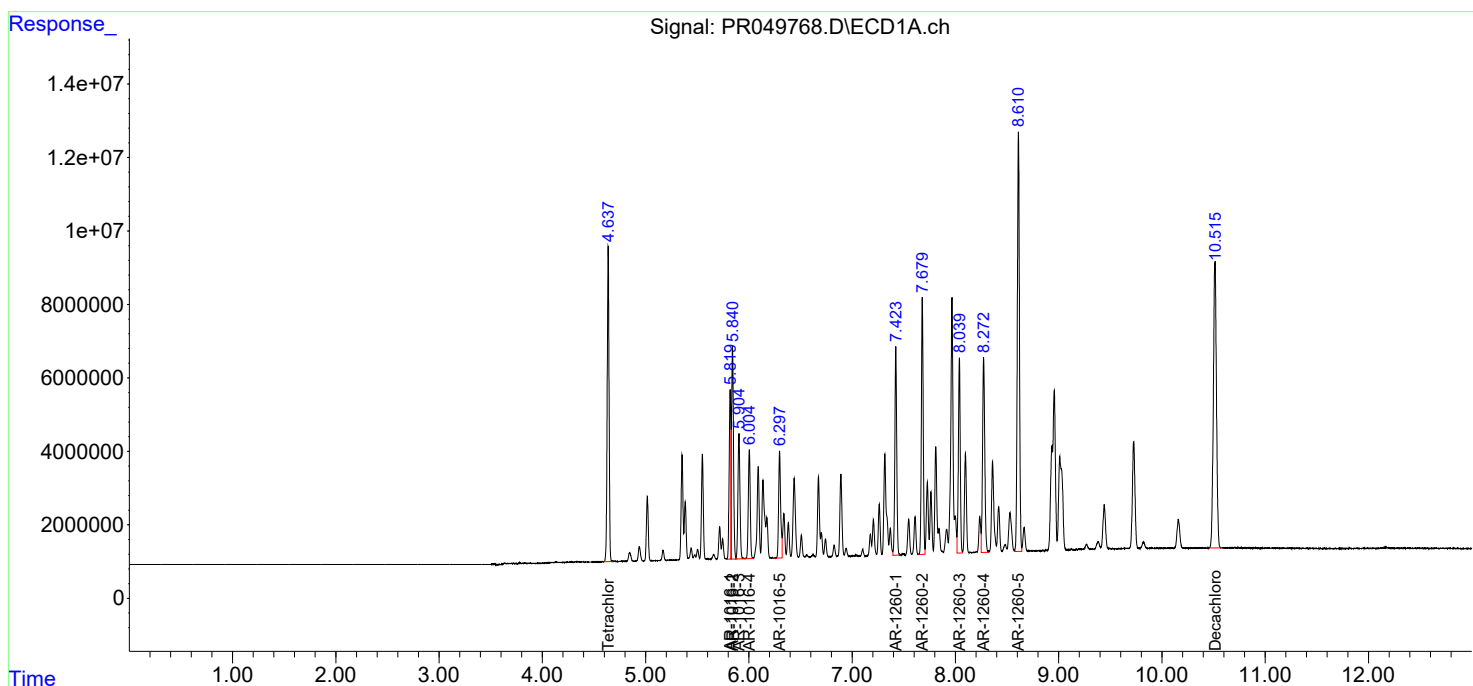
System Monitoring Compounds						
1) SA Tetrachlo...	4.637	3.822	106.7E6	179.9E6	23.978	23.985
2) SA Decachlor...	10.514	8.861	162.4E6	206.1E6	25.622	25.268
Target Compounds						
3) L1 AR-1016-1	5.819	4.911	53130392	62562907	252.332	255.501
4) L1 AR-1016-2	5.841	4.930	75524667	93558305	248.779	250.141
5) L1 AR-1016-3	5.904	5.106	46265323	49563435	258.565	255.923
6) L1 AR-1016-4	6.004	5.147	38666761	40128899	256.416	263.678
7) L1 AR-1016-5	6.297	5.361	39744941	52107383	263.036	260.645
31) L7 AR-1260-1	7.423	6.392	71378991	100.7E6	258.273	257.981
32) L7 AR-1260-2	7.679	6.578	86727219	121.6E6	256.902	256.779
33) L7 AR-1260-3	8.039	6.733	67224815	115.8E6	259.031	253.408
34) L7 AR-1260-4	8.273	7.204	78948437	98719802	255.749	254.840
35) L7 AR-1260-5	8.611	7.443	163.2E6	242.3E6	248.478	252.100

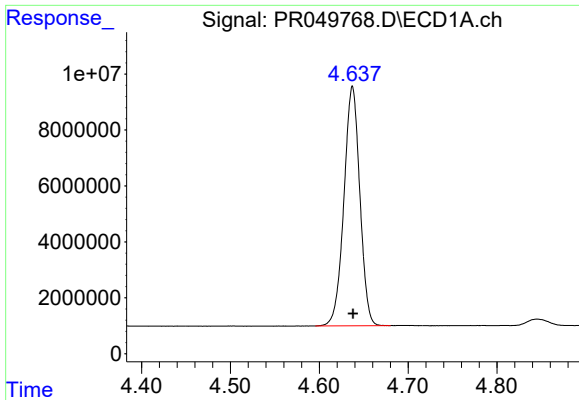
(f)=RT Delta > 1/2 Window (#)=Amounts differ by > 25% (m)=manual int.

Data Path : Z:\pestpcbsrv\HPCHEM1\ECD_R\Data\PR040521\
 Data File : PR049768.D
 Signal(s) : Signal #1: ECD1A.ch Signal #2: ECD2B.ch
 Acq On : 05 Apr 2021 10:32
 Operator : DD\AJ
 Sample : AR1660ICC250
 Misc :
 ALS Vial : 6 Sample Multiplier: 1

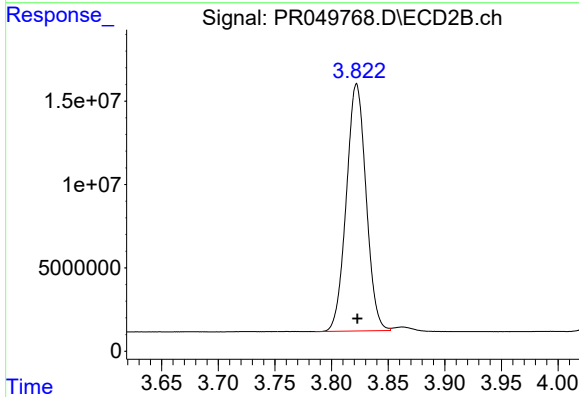
Integration File signal 1: autoint1.e
 Integration File signal 2: autoint2.e
 Quant Time: Apr 05 10:50:40 2021
 Quant Method : Z:\pestpcbsrv\HPCHEM1\ECD_R\Method\PR040521.M
 Quant Title : GC EXTRACTABLES
 QLast Update : Mon Apr 05 10:38:14 2021
 Response via : Initial Calibration
 Integrator: ChemStation

Volume Inj. : 2 µl
 Signal #1 Phase : ZB-MR1 Signal #2 Phase: ZB-MR2
 Signal #1 Info : 30Mx0.32mmx 0.50µ Signal #2 Info : 30M x 0.32mm x 0.25µm

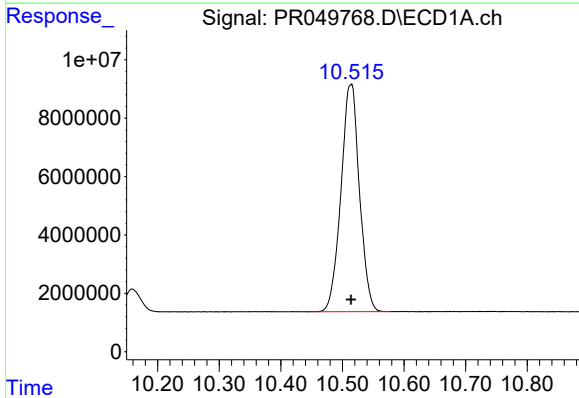




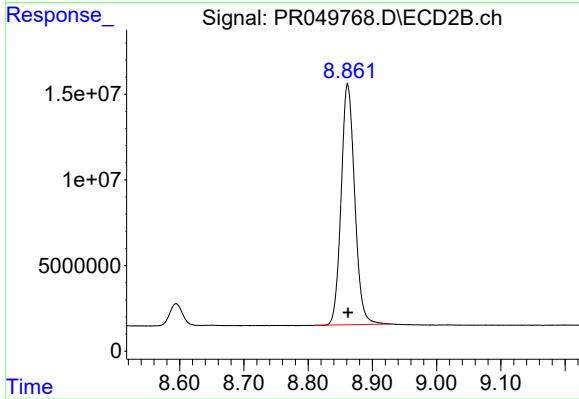
#1 Tetrachloro-m-xylene
R.T.: 4.637 min
Delta R.T.: 0.000 min
Response: 106650498
Conc: 23.98 ng/ml



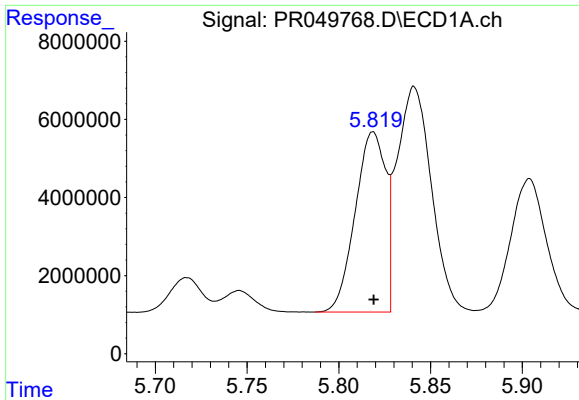
#1 Tetrachloro-m-xylene
R.T.: 3.822 min
Delta R.T.: 0.000 min
Response: 179932584
Conc: 23.98 ng/ml



#2 Decachlorobiphenyl
R.T.: 10.514 min
Delta R.T.: 0.000 min
Response: 162423523
Conc: 25.62 ng/ml

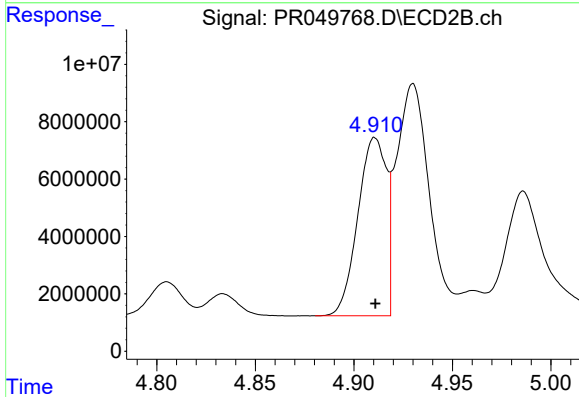


#2 Decachlorobiphenyl
R.T.: 8.861 min
Delta R.T.: 0.000 min
Response: 206134912
Conc: 25.27 ng/ml



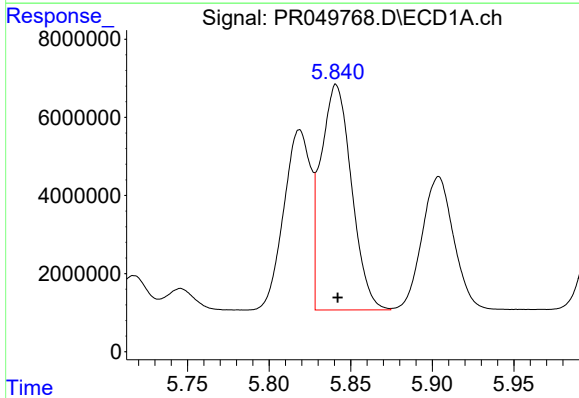
#3 AR-1016-1

R.T.: 5.819 min
Delta R.T.: 0.000 min
Response: 53130392
Conc: 252.33 ng/ml



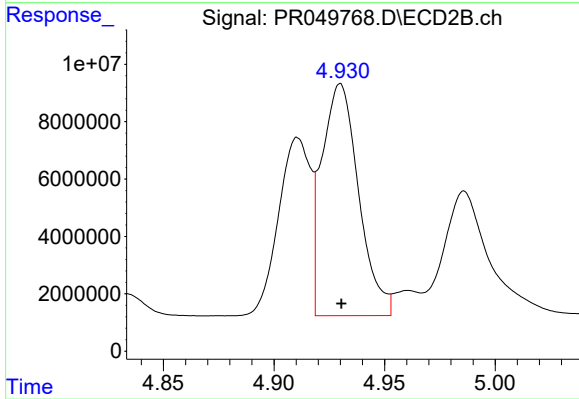
#3 AR-1016-1

R.T.: 4.911 min
Delta R.T.: 0.000 min
Response: 62562907
Conc: 255.50 ng/ml



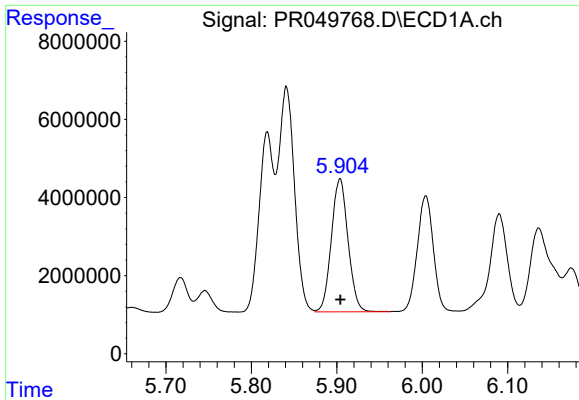
#4 AR-1016-2

R.T.: 5.841 min
Delta R.T.: 0.000 min
Response: 75524667
Conc: 248.78 ng/ml



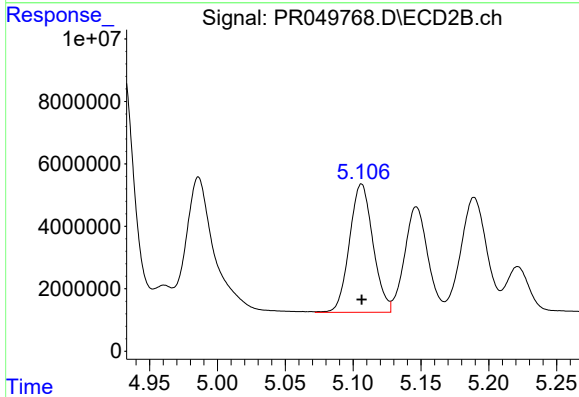
#4 AR-1016-2

R.T.: 4.930 min
Delta R.T.: 0.000 min
Response: 93558305
Conc: 250.14 ng/ml



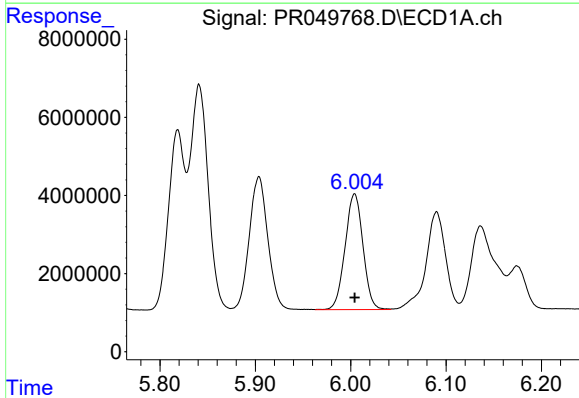
#5 AR-1016-3

R.T.: 5.904 min
 Delta R.T.: 0.000 min
 Response: 46265323
 Conc: 258.56 ng/ml



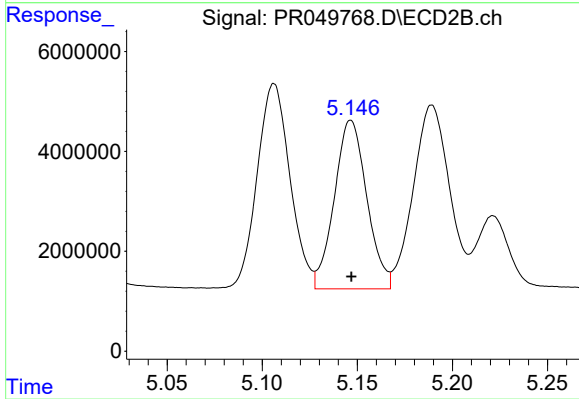
#5 AR-1016-3

R.T.: 5.106 min
 Delta R.T.: 0.000 min
 Response: 49563435
 Conc: 255.92 ng/ml



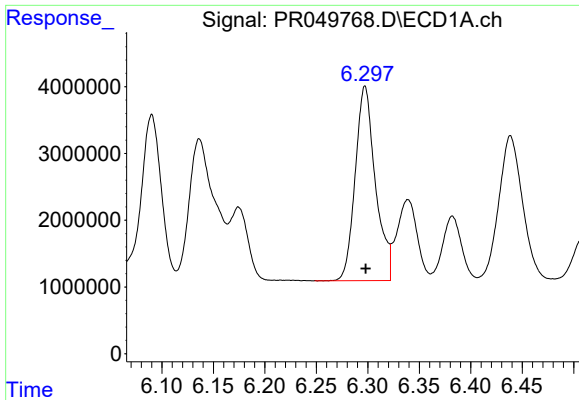
#6 AR-1016-4

R.T.: 6.004 min
 Delta R.T.: 0.000 min
 Response: 38666761
 Conc: 256.42 ng/ml



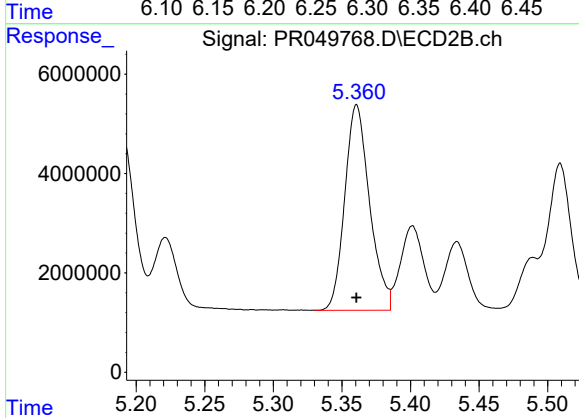
#6 AR-1016-4

R.T.: 5.147 min
 Delta R.T.: 0.000 min
 Response: 40128899
 Conc: 263.68 ng/ml



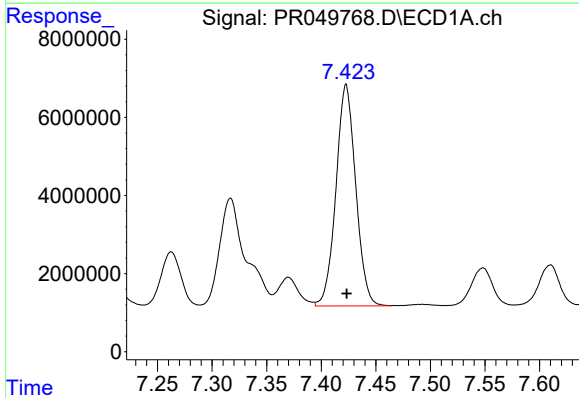
#7 AR-1016-5

R.T.: 6.297 min
Delta R.T.: 0.000 min
Response: 39744941
Conc: 263.04 ng/ml



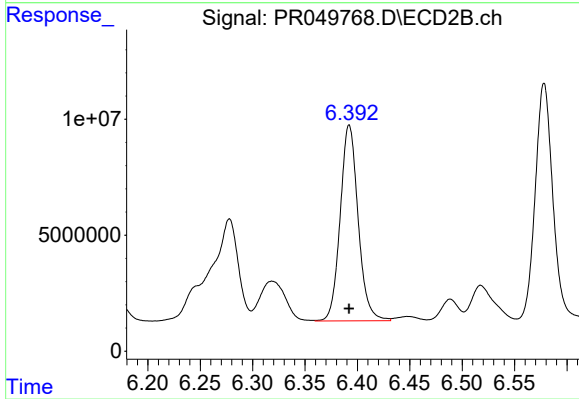
#7 AR-1016-5

R.T.: 5.361 min
Delta R.T.: 0.000 min
Response: 52107383
Conc: 260.65 ng/ml



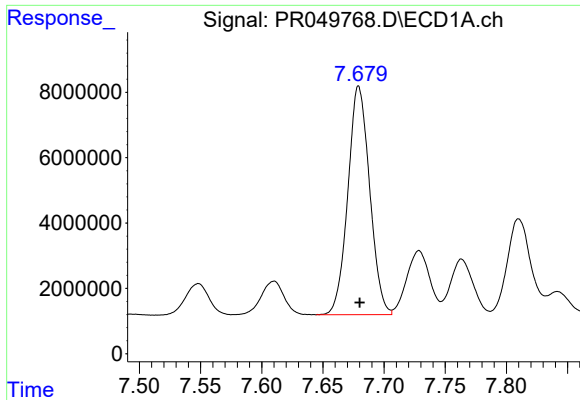
#31 AR-1260-1

R.T.: 7.423 min
Delta R.T.: 0.000 min
Response: 71378991
Conc: 258.27 ng/ml



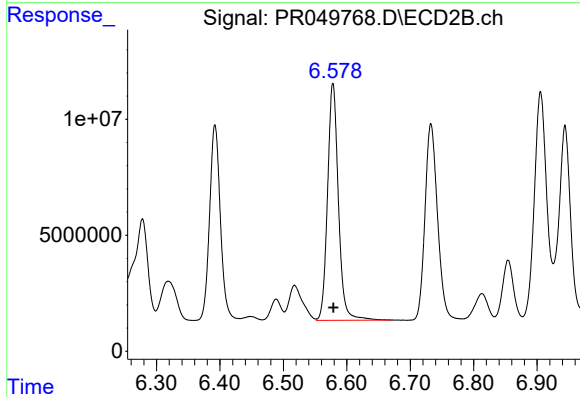
#31 AR-1260-1

R.T.: 6.392 min
Delta R.T.: 0.000 min
Response: 100746239
Conc: 257.98 ng/ml



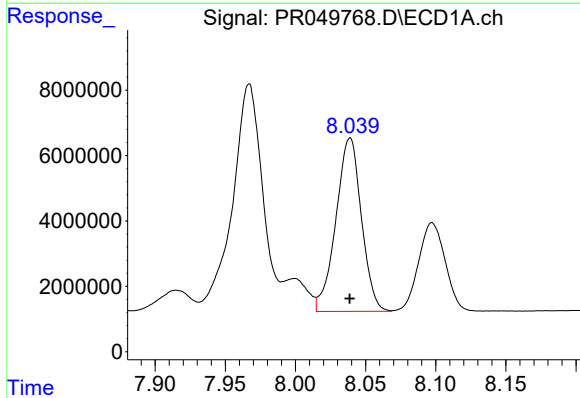
#32 AR-1260-2

R.T.: 7.679 min
Delta R.T.: 0.000 min
Response: 86727219
Conc: 256.90 ng/ml



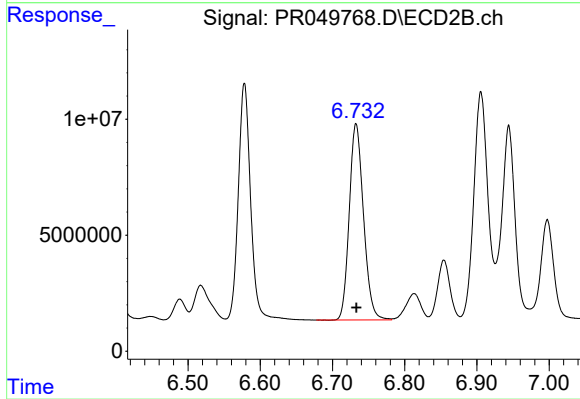
#32 AR-1260-2

R.T.: 6.578 min
Delta R.T.: 0.000 min
Response: 121615408
Conc: 256.78 ng/ml



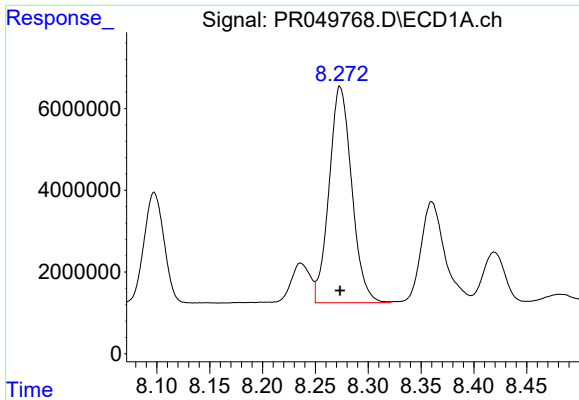
#33 AR-1260-3

R.T.: 8.039 min
Delta R.T.: 0.000 min
Response: 67224815
Conc: 259.03 ng/ml



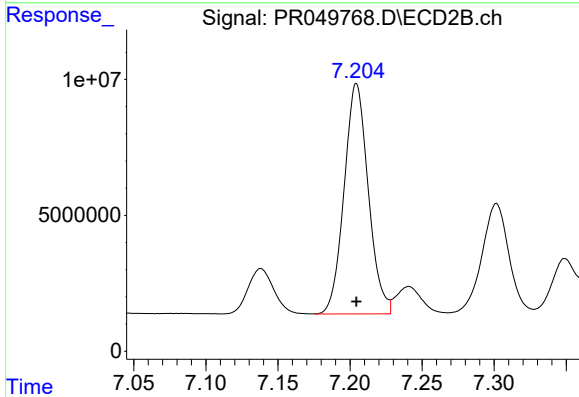
#33 AR-1260-3

R.T.: 6.733 min
Delta R.T.: 0.000 min
Response: 115845810
Conc: 253.41 ng/ml



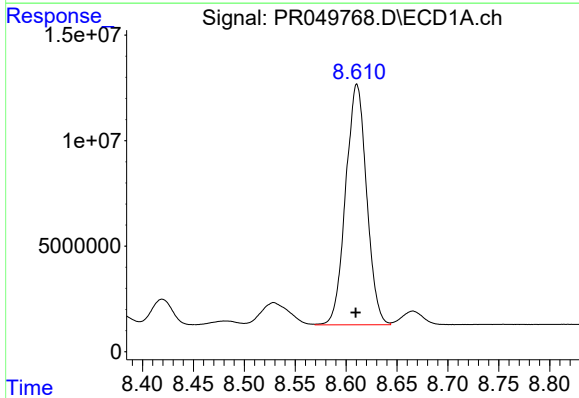
#34 AR-1260-4

R.T.: 8.273 min
Delta R.T.: 0.000 min
Response: 78948437
Conc: 255.75 ng/ml



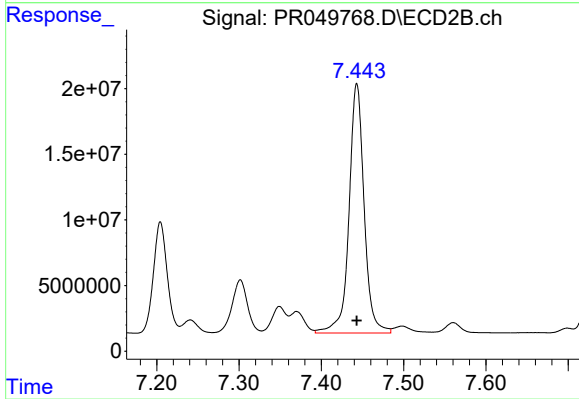
#34 AR-1260-4

R.T.: 7.204 min
Delta R.T.: 0.000 min
Response: 98719802
Conc: 254.84 ng/ml



#35 AR-1260-5

R.T.: 8.611 min
Delta R.T.: 0.001 min
Response: 163179635
Conc: 248.48 ng/ml



#35 AR-1260-5

R.T.: 7.443 min
Delta R.T.: 0.000 min
Response: 242283782
Conc: 252.10 ng/ml