

Data Path : Z:\pestpcbsrv\HPCHEM1\ECD_R\Data\PR041719\
 Data File : PR037196.D
 Signal(s) : Signal #1: ECD1A.ch Signal #2: ECD2B.ch
 Acq On : 17 Apr 2019 09:20
 Operator : SM\SJ
 Sample : I.BLK
 Misc :
 ALS Vial : 2 Sample Multiplier: 1

Instrument :
 ECD_R
 ClientSampleId :
 I.BLK

Integration File signal 1: autoint1.e
 Integration File signal 2: autoint2.e
 Quant Time: Apr 17 15:11:57 2019
 Quant Method : Z:\pestpcbsrv\HPCHEM1\ECD_R\Method\PR040219.M
 Quant Title : GC EXTRACTABLES
 QLast Update : Wed Apr 03 03:09:33 2019
 Response via : Initial Calibration
 Integrator: ChemStation

Volume Inj. : 2 µl
 Signal #1 Phase : ZB-MR1 Signal #2 Phase: ZB-MR2
 Signal #1 Info : 30Mx0.32mmx 0.50µ Signal #2 Info : 30M x 0.32mm x 0.25µm

Compound	RT#1	RT#2	Resp#1	Resp#2	ng/ml	ng/ml
----------	------	------	--------	--------	-------	-------

 System Monitoring Compounds

1) SA Tetrachlo...	4.398	3.456	38602097	152.8E6	24.230	26.083
2) SA Decachlor...	10.050	8.324	39745001	167.4E6	21.214	20.968

Target Compounds

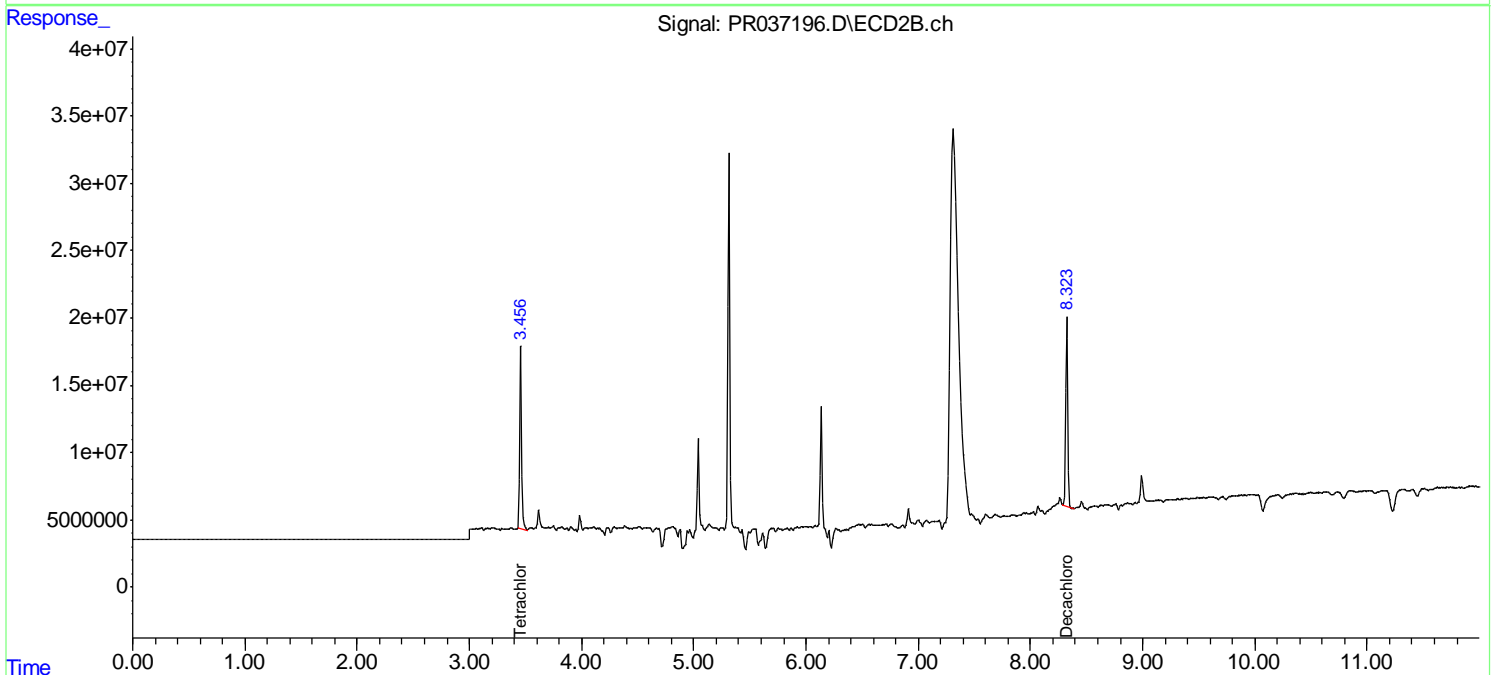
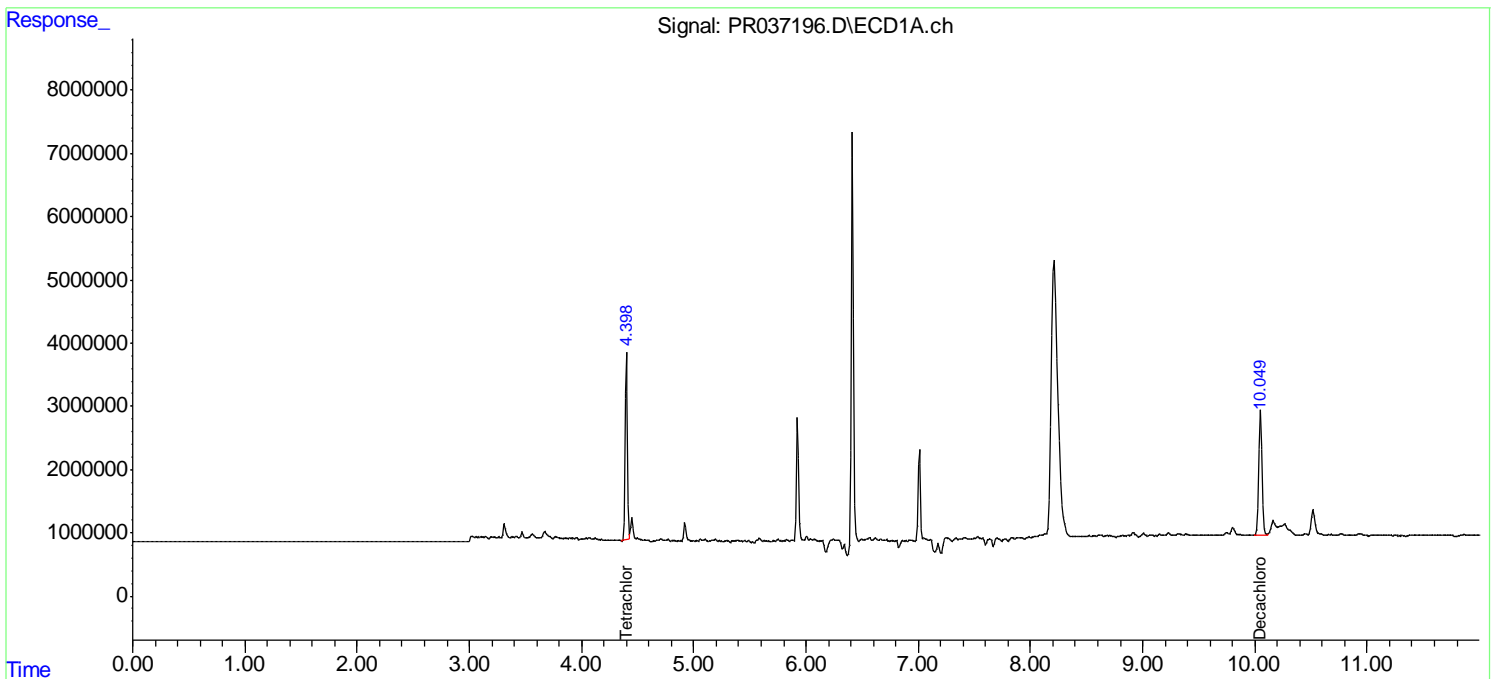
(f)=RT Delta > 1/2 Window (#)=Amounts differ by > 25% (m)=manual int.

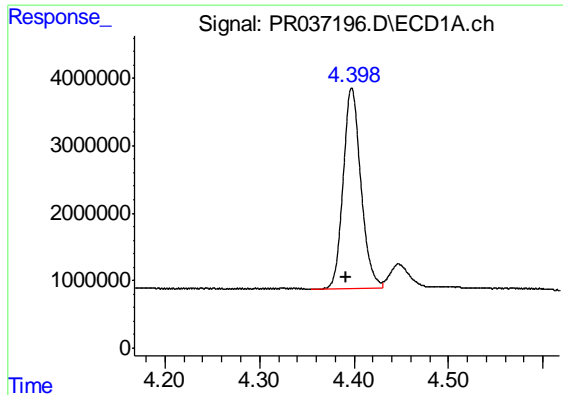
Data Path : Z:\pestpcbsrv\HPCHEM1\ECD_R\Data\PR041719\
 Data File : PR037196.D
 Signal(s) : Signal #1: ECD1A.ch Signal #2: ECD2B.ch
 Acq On : 17 Apr 2019 09:20
 Operator : SM\SJ
 Sample : I.BLK
 Misc :
 ALS Vial : 2 Sample Multiplier: 1

Instrument :
 ECD_R
 ClientSampled :
 I.BLK

Integration File signal 1: autoint1.e
 Integration File signal 2: autoint2.e
 Quant Time: Apr 17 15:11:57 2019
 Quant Method : Z:\pestpcbsrv\HPCHEM1\ECD_R\Method\PR040219.M
 Quant Title : GC EXTRACTABLES
 QLast Update : Wed Apr 03 03:09:33 2019
 Response via : Initial Calibration
 Integrator: ChemStation

Volume Inj. : 2 µl
 Signal #1 Phase : ZB-MR1 Signal #2 Phase: ZB-MR2
 Signal #1 Info : 30Mx0.32mmx 0.50µ Signal #2 Info : 30M x 0.32mm x 0.25µm

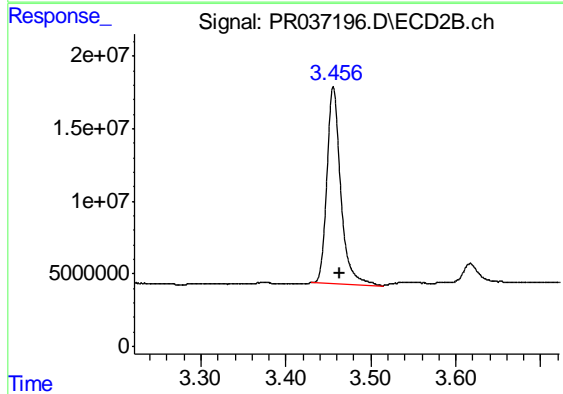




#1 Tetrachloro-m-xylene

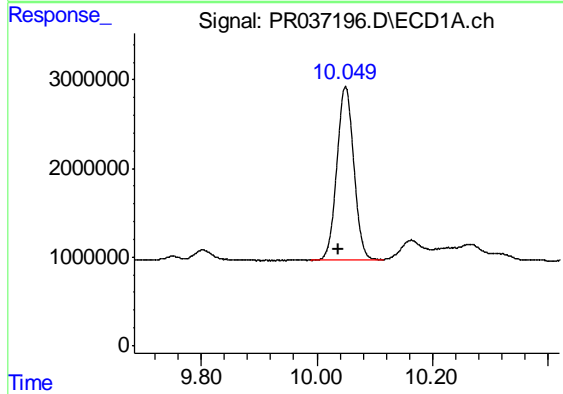
R.T.: 4.398 min
 Delta R.T.: 0.006 min
 Response: 38602097
 Conc: 24.23 ng/ml

Instrument :
 ECD_R
 ClientSampleId :
 I.BLK



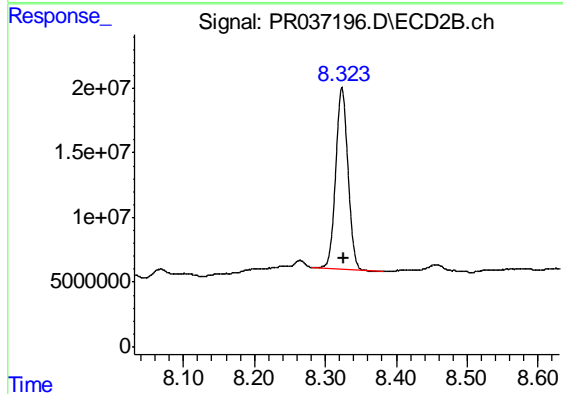
#1 Tetrachloro-m-xylene

R.T.: 3.456 min
 Delta R.T.: -0.008 min
 Response: 152794105
 Conc: 26.08 ng/ml



#2 Decachlorobiphenyl

R.T.: 10.050 min
 Delta R.T.: 0.011 min
 Response: 39745001
 Conc: 21.21 ng/ml



#2 Decachlorobiphenyl

R.T.: 8.324 min
 Delta R.T.: -0.002 min
 Response: 167370874
 Conc: 20.97 ng/ml