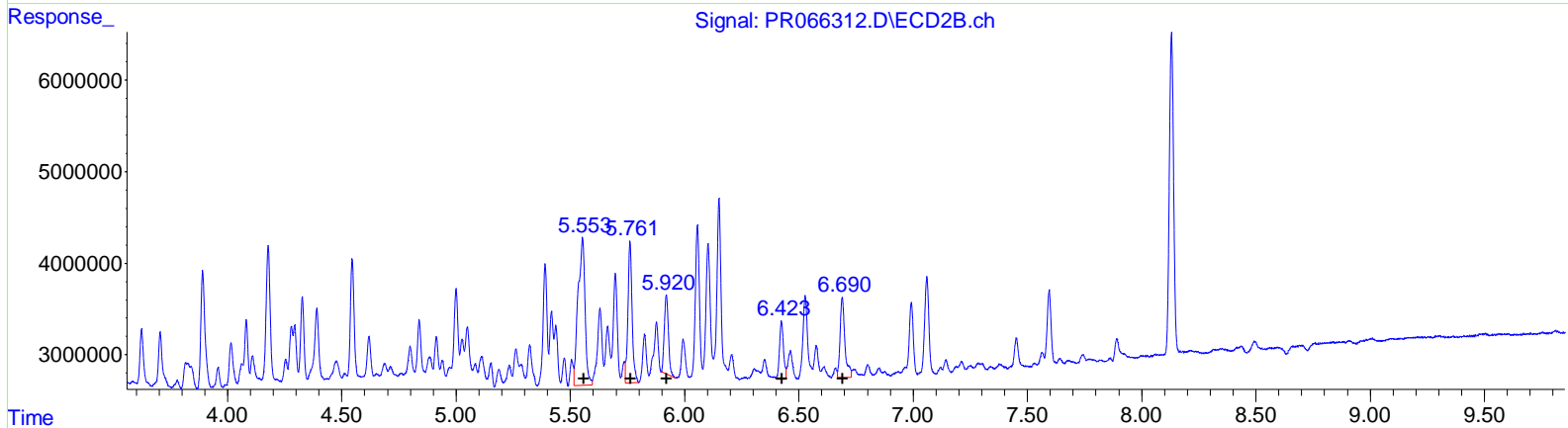
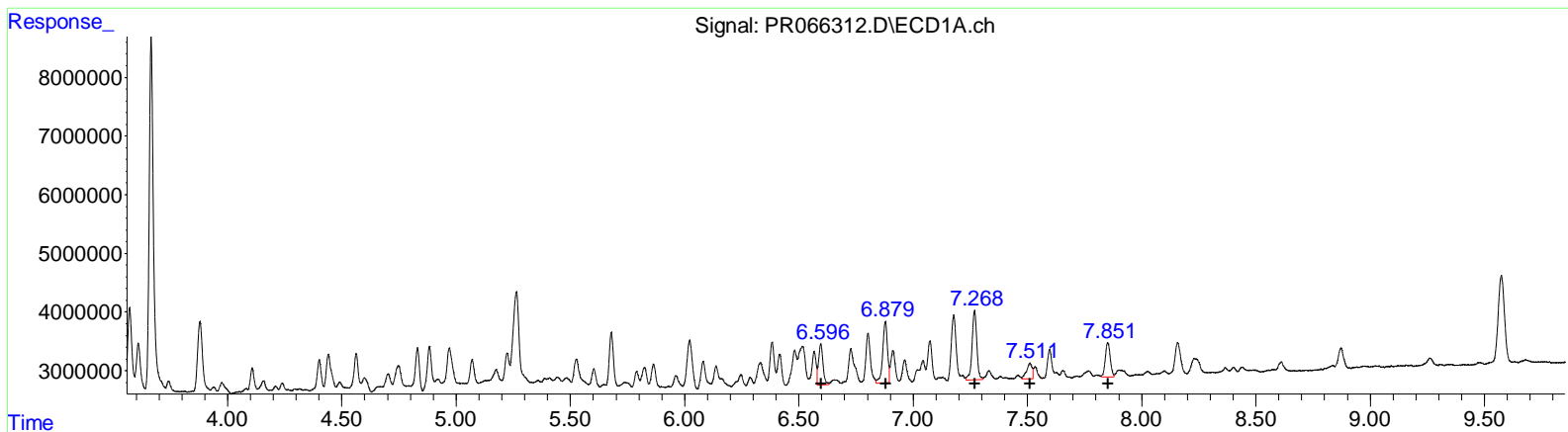


Data Path : Z:\pestpcbsrv\HPCHEM1\ECD\_R\Data\PR041824\  
 Data File : PR066312.D  
 Signal(s) : Signal #1: ECD1A.ch Signal #2: ECD2B.ch  
 Acq On : 18 Apr 2024 18:01  
 Operator : AJ\MA  
 Sample : P2119-02  
 Misc :  
 ALS Vial : 24 Sample Multiplier: 1

Integration File signal 1: autoint1.e  
 Integration File signal 2: autoint2.e  
 Quant Time: Apr 18 22:04:59 2024  
 Quant Method : Z:\pestpcbsrv\HPCHEM1\ECD\_R\Method\PR041624CLP.M  
 Quant Title : GC EXTRACTABLES  
 QLast Update : Wed Apr 17 09:32:24 2024  
 Response via : Initial Calibration  
 Integrator: ChemStation

Volume Inj. : 1 µl  
 Signal #1 Phase : ZB MR1 Signal #2 Phase: ZB MR2  
 Signal #1 Info : 30Mx0.32mmx 0.5µm Signal #2 Info : 30M x 0.32mm x 0.25µm



QEdit

| (31) AR-1260-1 (L7) |          |        |
|---------------------|----------|--------|
| R.T.                | Response | Conc   |
| 6.60                | 9539573  | 45.76  |
| 6.88                | 15309652 | 69.73  |
| 7.27                | 17220286 | 100.98 |
| 7.51                | 4549942  | 24.98  |
| 7.85                | 8836171  | 29.32  |

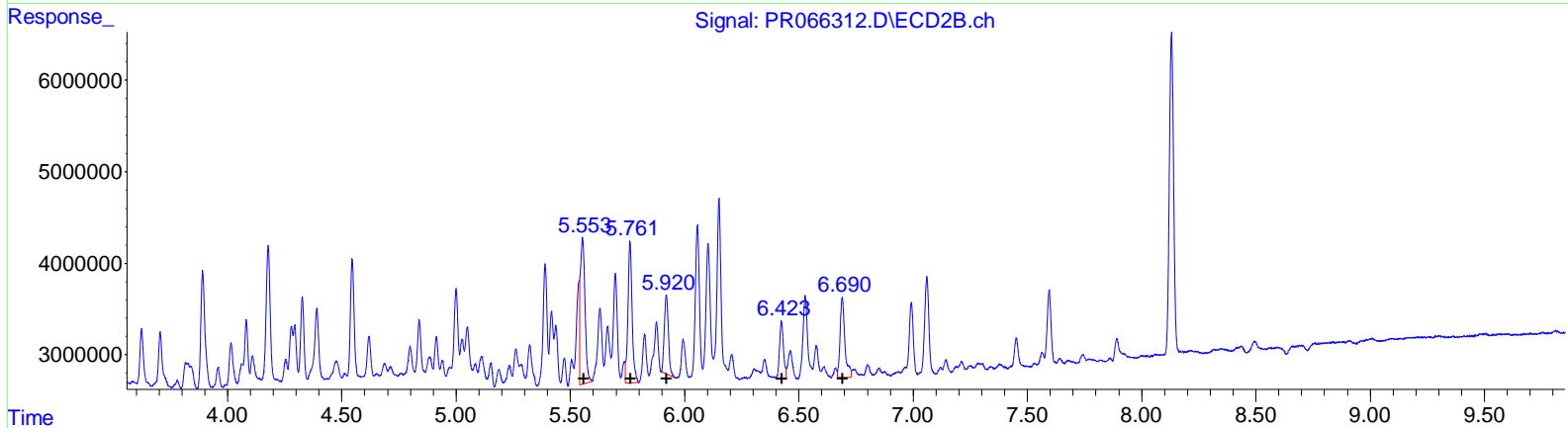
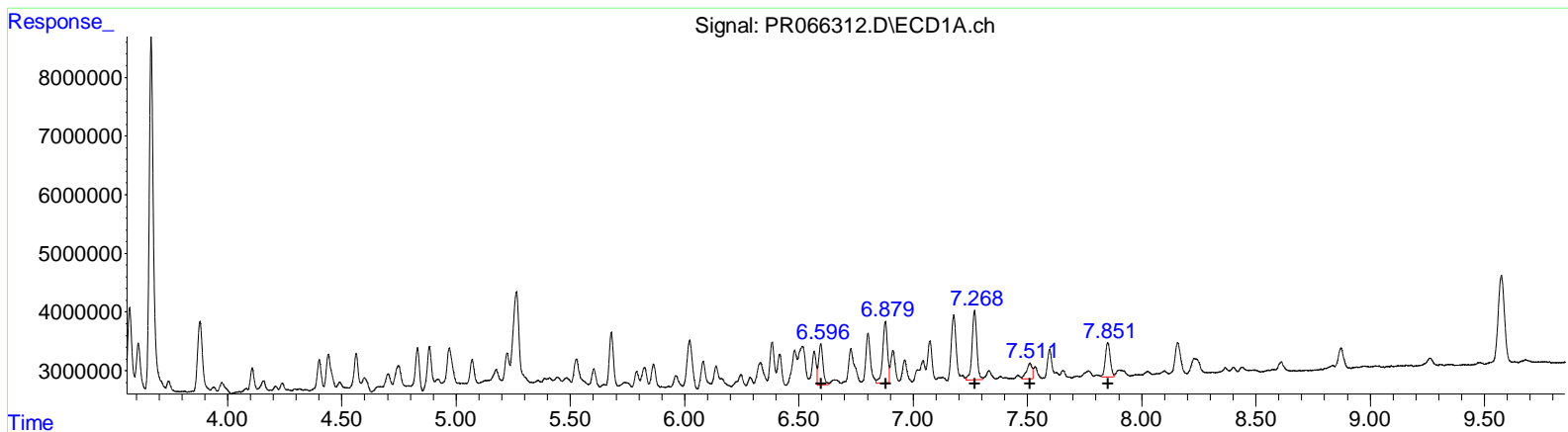
  

| (31) AR-1260-1 #2 (L7) |          |        |
|------------------------|----------|--------|
| R.T.                   | Response | Conc   |
| 5.55                   | 34018721 | 131.77 |
| 5.76                   | 19703690 | 64.03  |
| 5.92                   | 10902507 | 38.57  |
| 6.42                   | 7769395  | 32.22  |
| 6.69                   | 12859659 | 24.10  |

Data Path : Z:\pestpcbsrv\HPCHEM1\ECD\_R\Data\PR041824\  
 Data File : PR066312.D  
 Signal(s) : Signal #1: ECD1A.ch Signal #2: ECD2B.ch  
 Acq On : 18 Apr 2024 18:01  
 Operator : AJ\MA  
 Sample : P2119-02  
 Misc :  
 ALS Vial : 24 Sample Multiplier: 1

Integration File signal 1: autoint1.e  
 Integration File signal 2: autoint2.e  
 Quant Time: Apr 18 22:04:59 2024  
 Quant Method : Z:\pestpcbsrv\HPCHEM1\ECD\_R\Method\PR041624CLP.M  
 Quant Title : GC EXTRACTABLES  
 QLast Update : Wed Apr 17 09:32:24 2024  
 Response via : Initial Calibration  
 Integrator: ChemStation

Volume Inj. : 1 µl  
 Signal #1 Phase : ZB MR1 Signal #2 Phase: ZB MR2  
 Signal #1 Info : 30Mx0.32mmx 0.5µm Signal #2 Info : 30M x 0.32mm x 0.25µm



QEdit

| (31) AR-1260-1 (L7)    |          |        |
|------------------------|----------|--------|
| R.T.                   | Response | Conc   |
| 6.60                   | 9539573  | 45.76  |
| 6.88                   | 15309652 | 69.73  |
| 7.27                   | 17220286 | 100.98 |
| 7.51                   | 4549942  | 24.98  |
| 7.85                   | 8836171  | 29.32  |
| (31) AR-1260-1 #2 (L7) |          |        |
| R.T.                   | Response | Conc   |
| 5.55                   | 23094817 | 89.46  |
| 5.76                   | 19703690 | 64.03  |
| 5.92                   | 10902507 | 38.57  |
| 6.42                   | 7769395  | 32.22  |
| 6.69                   | 12859659 | 24.10  |

(+) = Expected Retention Time

Data Path : Z:\pestpcbsrv\HPCHEM1\ECD\_R\Data\PRO41824\  
 Data File : PRO66312.D  
 Signal(s) : Signal #1: ECD1A.ch Signal #2: ECD2B.ch  
 Acq On : 18 Apr 2024 18:01  
 Operator : AJ\MA  
 Sample : P2119-02  
 Misc :  
 ALS Vial : 24 Sample Multiplier: 1

Integration File signal 1: autoint1.e  
 Integration File signal 2: autoint2.e  
 Quant Time: Apr 18 22:04:59 2024  
 Quant Method : Z:\pestpcbsrv\HPCHEM1\ECD\_R\Method\PRO41624CLP.M  
 Quant Title : GC EXTRACTABLES  
 QLast Update : Wed Apr 17 09:32:24 2024  
 Response via : Initial Calibration  
 Integrator: ChemStation

Volume Inj. : 1 µl  
 Signal #1 Phase : ZB MR1 Signal #2 Phase: ZB MR2  
 Signal #1 Info : 30Mx0.32mmx 0.5µm Signal #2 Info : 30M x 0.32mm x 0.25µm

| Compound                    | RT#1  | RT#2  | Resp#1   | Resp#2   | ng/ml   | ng/ml    |
|-----------------------------|-------|-------|----------|----------|---------|----------|
| -----                       |       |       |          |          |         |          |
| System Monitoring Compounds |       |       |          |          |         |          |
| 1) SA Tetrachlo...          | 3.666 | 2.897 | 64584156 | 74776701 | 11.682  | 15.887 # |
| 2) SA Decachlor...          | 9.574 | 8.131 | 28033578 | 45211605 | 19.066  | 17.808   |
| Target Compounds            |       |       |          |          |         |          |
| 31) L7 AR-1260-1            | 6.596 | 5.553 | 9539573  | 23094817 | 45.762  | 89.457m# |
| 32) L7 AR-1260-2            | 6.879 | 5.761 | 15309652 | 19703690 | 69.734  | 64.030   |
| 33) L7 AR-1260-3            | 7.269 | 5.920 | 17220286 | 10902507 | 100.980 | 38.566 # |
| 34) L7 AR-1260-4            | 7.510 | 6.424 | 4549942  | 7769395  | 24.978  | 32.219 # |
| 35) L7 AR-1260-5            | 7.851 | 6.690 | 8836171  | 12859659 | 29.317  | 24.104   |
| -----                       |       |       |          |          |         |          |

(f)=RT Delta > 1/2 Window (#)=Amounts differ by > 25% (m)=manual int.

Data Path : Z:\pestpcbsrv\HPCHEM1\ECD\_R\Data\PR041824\  
 Data File : PR066312.D  
 Signal(s) : Signal #1: ECD1A.ch Signal #2: ECD2B.ch  
 Acq On : 18 Apr 2024 18:01  
 Operator : AJ\MA  
 Sample : P2119-02  
 Misc :  
 ALS Vial : 24 Sample Multiplier: 1

Integration File signal 1: autoint1.e  
 Integration File signal 2: autoint2.e  
 Quant Time: Apr 18 22:04:59 2024  
 Quant Method : Z:\pestpcbsrv\HPCHEM1\ECD\_R\Method\PR041624CLP.M  
 Quant Title : GC EXTRACTABLES  
 QLast Update : Wed Apr 17 09:32:24 2024  
 Response via : Initial Calibration  
 Integrator: ChemStation

Volume Inj. : 1 µl  
 Signal #1 Phase : ZB MR1 Signal #2 Phase: ZB MR2  
 Signal #1 Info : 30Mx0.32mmx 0.5µm Signal #2 Info : 30M x 0.32mm x 0.25µm

