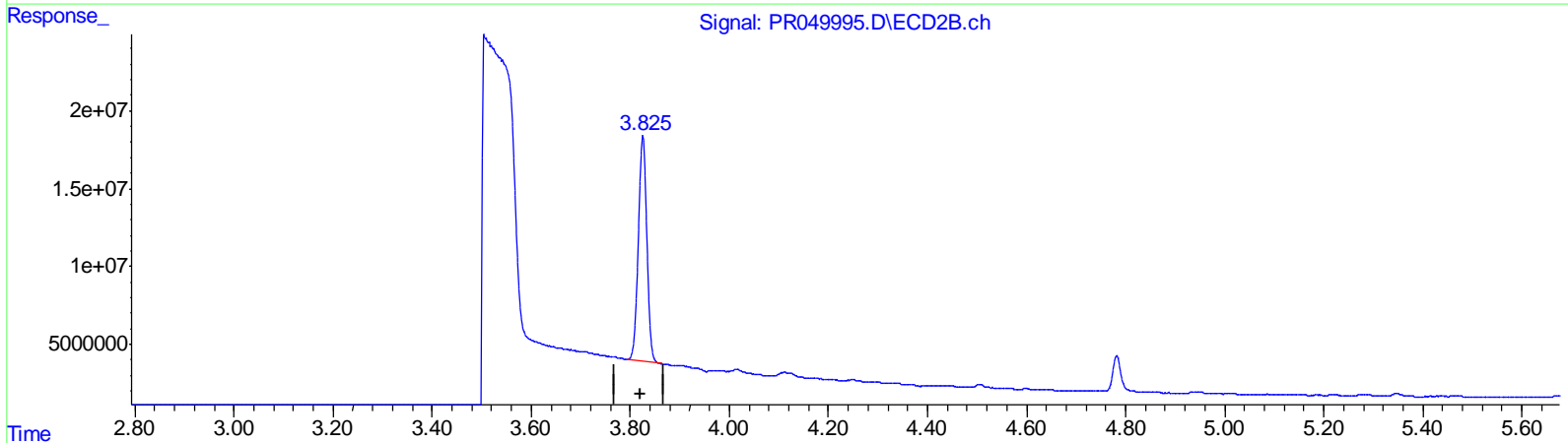
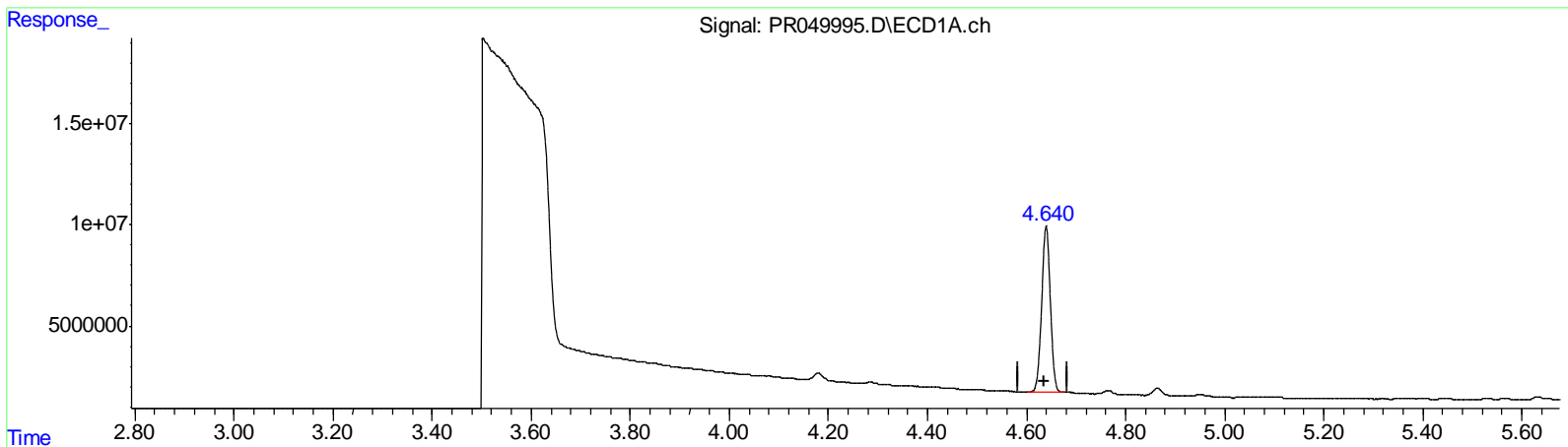


Data Path : Z:\pestpcbsrv\HPCHEM1\ECD_R\Data\PR042021\
 Data File : PR049995.D
 Signal(s) : Signal #1: ECD1A.ch Signal #2: ECD2B.ch
 Acq On : 20 Apr 2021 12:17
 Operator : DD\AJ
 Sample : M2031-11
 Misc :
 ALS Vial : 14 Sample Multiplier: 1

Integration File signal 1: autoint1.e
 Integration File signal 2: autoint2.e
 Quant Time: Apr 21 02:50:13 2021
 Quant Method : Z:\pestpcbsrv\HPCHEM1\ECD_R\Method\PR040621CLP.M
 Quant Title : GC EXTRACTABLES
 QLast Update : Wed Apr 07 06:22:57 2021
 Response via : Initial Calibration
 Integrator: ChemStation

Volume Inj. : 1 µl
 Signal #1 Phase : ZB MR1 Signal #2 Phase: ZB MR2
 Signal #1 Info : 30Mx0.32mmx 0.5µm Signal #2 Info : 30M x 0.32mm x 0.25µm



QEdit

(1) Tetrachloro-m-xylene (SA)

4.640min 22.365 ng/ml

response 99496791

(1) Tetrachloro-m-xylene #2 (SA)

3.825min 23.332 ng/ml m

response 172188920

(+) = Expected Retention Time