

Data Path : Z:\pestpcbsrv\HPCHEM1\ECD_R\Data\PR042021\
 Data File : PR050005.D
 Signal(s) : Signal #1: ECD1A.ch Signal #2: ECD2B.ch
 Acq On : 20 Apr 2021 15:39
 Operator : DD\AJ
 Sample : AR1242CCC400
 Misc :
 ALS Vial : 141 Sample Multiplier: 1

Instrument :
 ECD_R
ClientSampleId :
 AR12423057

Integration File signal 1: autoint1.e
 Integration File signal 2: autoint2.e
 Quant Time: Apr 21 02:56:11 2021
 Quant Method : Z:\pestpcbsrv\HPCHEM1\ECD_R\Method\PR040621CLP.M
 Quant Title : GC EXTRACTABLES
 QLast Update : Wed Apr 07 06:22:57 2021
 Response via : Initial Calibration
 Integrator: ChemStation

Volume Inj. : 1 µl
 Signal #1 Phase : ZB MR1 Signal #2 Phase: ZB MR2
 Signal #1 Info : 30Mx0.32mmx 0.5µm Signal #2 Info : 30M x 0.32mm x 0.25µm

Compound	RT#1	RT#2	Resp#1	Resp#2	ng/ml	ng/ml

System Monitoring Compounds						
1) SA Tetrachlo...	4.638	3.822	82460645	132.1E6	18.536	17.905
2) SA Decachlor...	10.510	8.853	198.0E6	277.7E6	29.998	33.235
Target Compounds						
3) L1 AR-1016-1	5.818	4.908	67674046	91434455	318.978	336.998
4) L1 AR-1016-2	5.841	4.927	97531616	127.7E6	324.021	321.197
5) L1 AR-1016-3	5.903	5.103	60001010	70025002	330.678	334.828
6) L1 AR-1016-4	6.004	5.143	50672523	50684850	334.018	311.785
7) L1 AR-1016-5	6.296	5.357	52991351	72180442	344.692	333.371
8) L2 AR-1221-1	4.847	4.033	5824477	8604993	105.567	105.664
9) L2 AR-1221-2	4.938	4.120	7510590	11222475	187.136	193.072
10) L2 AR-1221-3	5.016	4.196	31628331	46316471	236.065	235.755
11) L3 AR-1232-1	5.016	4.196	31628331	46316471	297.599	300.911
12) L3 AR-1232-2	5.549	4.927	45591755	127.7E6	751.916	783.286
13) L3 AR-1232-3	5.841	5.103	97531616	70025002	777.471	814.049
14) L3 AR-1232-4	6.004	5.186	50672523	65649495	805.999	874.389
15) L3 AR-1232-5	6.089	5.357	42845254	72180442	861.065	858.080
16) L4 AR-1242-1	5.818	4.908	67674046	91434455	354.320	375.984
17) L4 AR-1242-2	5.841	4.927	97531616	127.7E6	364.039	361.791
18) L4 AR-1242-3	5.903	5.103	60001010	70025002	367.906	374.731
19) L4 AR-1242-4	6.004	5.186	50672523	65649495	372.753	372.814
20) L4 AR-1242-5	6.741	5.707	58897026	87791540	371.898	368.792
21) L5 AR-1248-1	5.818	4.908	67674046	91434455	527.709	546.636
22) L5 AR-1248-2	6.089	5.143	42845254	50684850	231.904	225.483
23) L5 AR-1248-3	6.296	5.186	52991351	65649495	253.708	274.786
24) L5 AR-1248-4	6.702	5.357	56648259	72180442	226.217	245.481
25) L5 AR-1248-5	6.741	5.748	58897026	75138897	243.283	245.721
26) L6 AR-1254-1	6.673	5.707	42618713	87791540	121.819	134.165
27) L6 AR-1254-2	6.900	5.854	50901468	21033775	91.588	37.405 #
28) L6 AR-1254-3	7.262	6.257	20746949	5236959	33.114	5.321 #
29) L6 AR-1254-4	7.548	6.483	16318762	22852863	33.959	37.827
30) L6 AR-1254-5	7.968	6.900	3318906	7079482	6.208	8.124 #
31) L7 AR-1260-1	7.422	6.402	2413431	11112331	8.488	27.575 #
32) L7 AR-1260-2	7.675	6.573	3847207	3217224	10.965	6.549 #
33) L7 AR-1260-3	7.968f	6.726	3318906	3104207	12.126	6.595 #
34) L7 AR-1260-4	8.267	7.234	1795462	2274957	5.535	5.655
35) L7 AR-1260-5	8.539f	7.414	800390	1448796	1.180	1.450
36) L8 AR-1262-1	7.968f	6.900	3318906	7079482	6.762	19.855 #
37) L8 AR-1262-2	8.539f	7.414	800390	1448796	0.847	1.107 #
45) L9 AR-1268-5	10.160	8.585	1269708	1733026	0.461	0.500

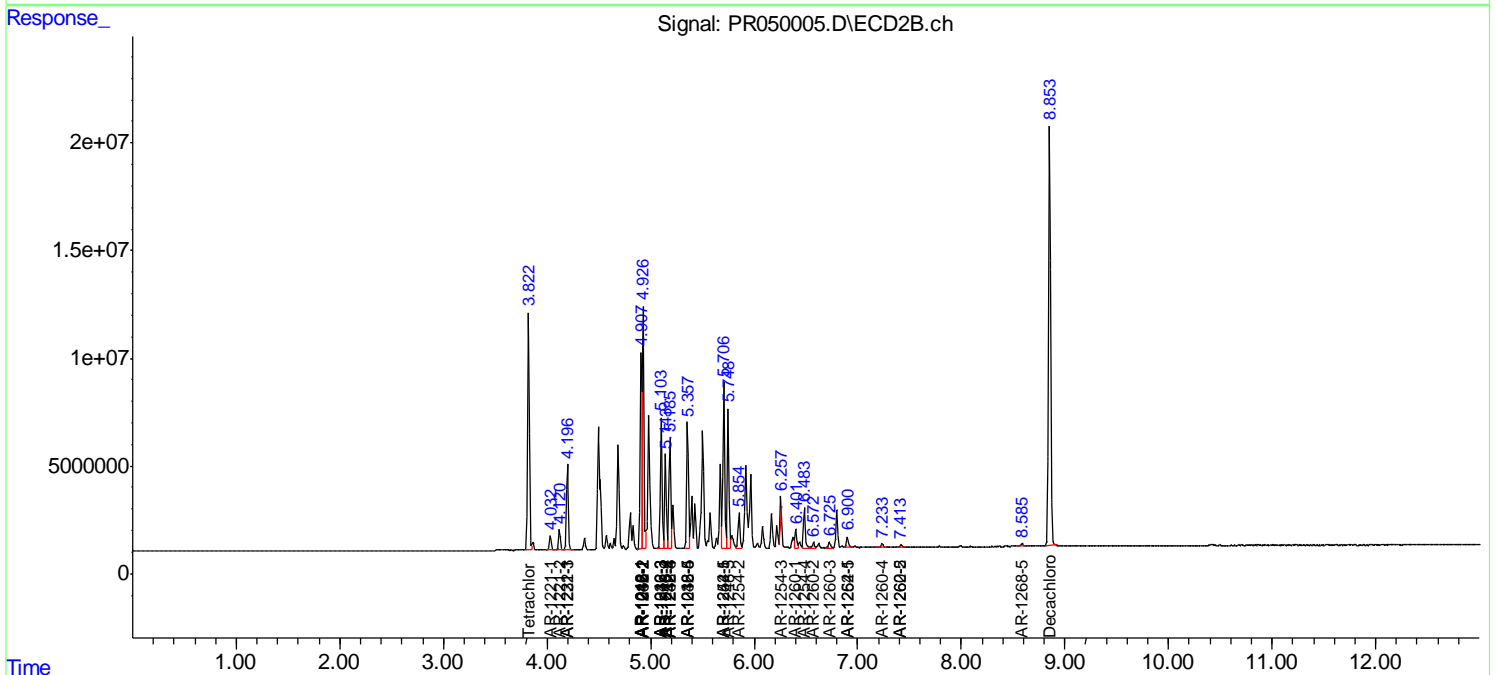
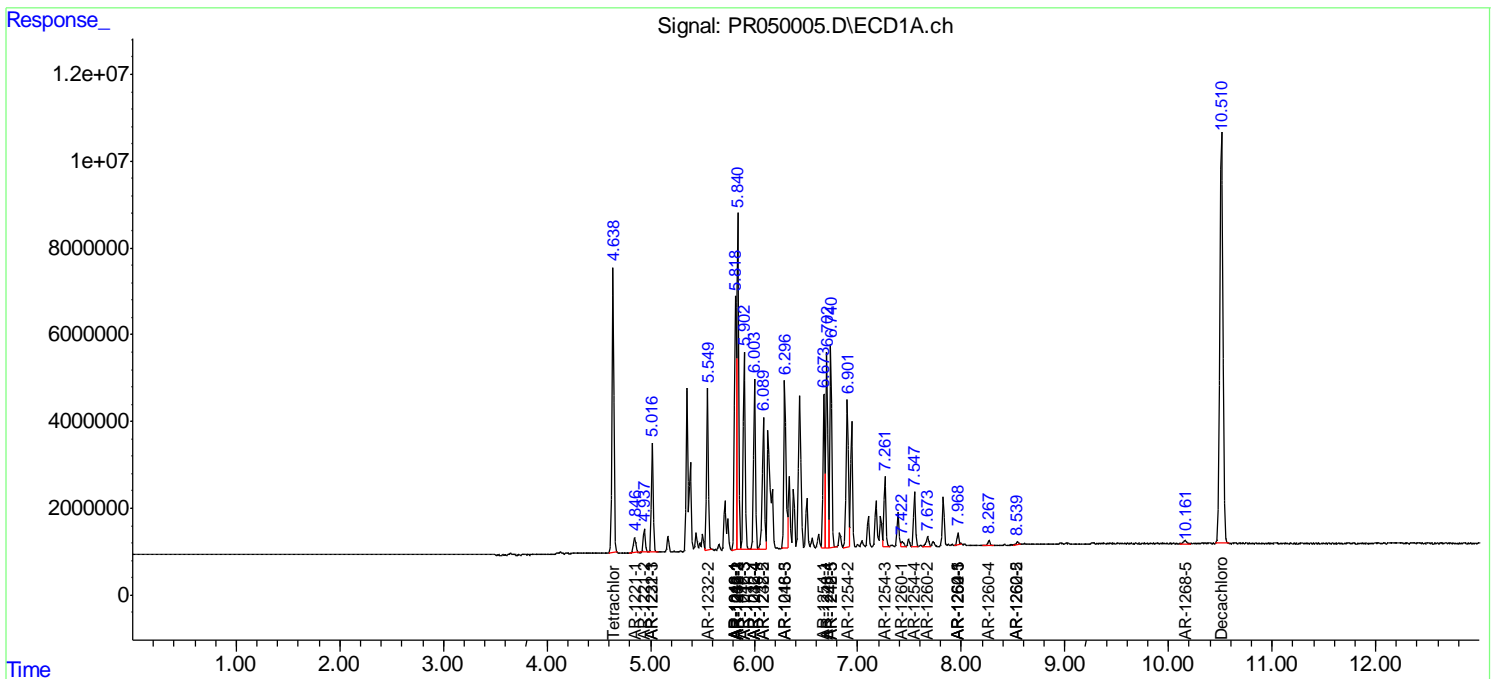
(f)=RT Delta > 1/2 Window (#)=Amounts differ by > 25% (m)=manual int.

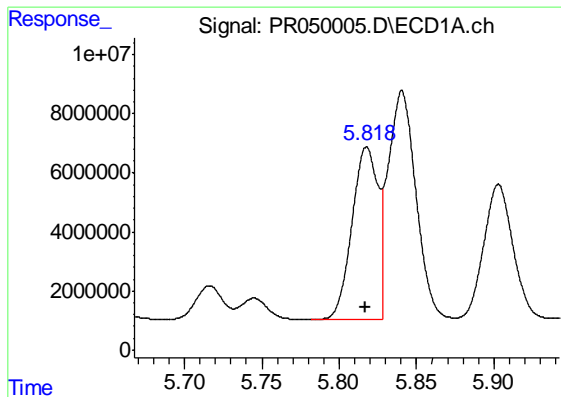
Data Path : Z:\pestpcbsrv\HPCHEM1\ECD_R\Data\PR042021\
 Data File : PR050005.D
 Signal(s) : Signal #1: ECD1A.ch Signal #2: ECD2B.ch
 Acq On : 20 Apr 2021 15:39
 Operator : DD\AJ
 Sample : AR1242CCC400
 Misc :
 ALS Vial : 141 Sample Multiplier: 1

Instrument :
 ECD_R
 Client Sampled :
 AR12423057

Integration File signal 1: autoint1.e
 Integration File signal 2: autoint2.e
 Quant Time: Apr 21 02:56:11 2021
 Quant Method : Z:\pestpcbsrv\HPCHEM1\ECD_R\Method\PR040621CLP.M
 Quant Title : GC EXTRACTABLES
 QLast Update : Wed Apr 07 06:22:57 2021
 Response via : Initial Calibration
 Integrator: ChemStation

Volume Inj. : 1 µl
 Signal #1 Phase : ZB MR1 Signal #2 Phase: ZB MR2
 Signal #1 Info : 30Mx0.32mmx 0.5µm Signal #2 Info : 30M x 0.32mm x 0.25µm

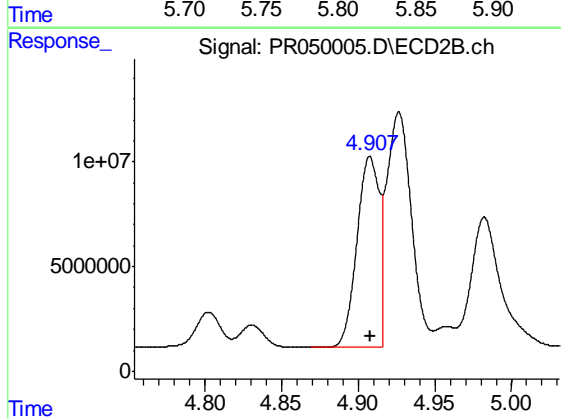




#3 AR-1016-1

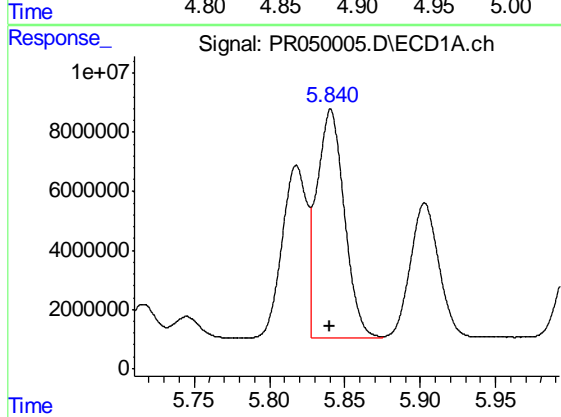
R.T.: 5.818 min
Delta R.T.: 0.000 min
Response: 67674046
Conc: 318.98 ng/ml

Instrument :
ECD_R
ClientSampleId :
AR12423057



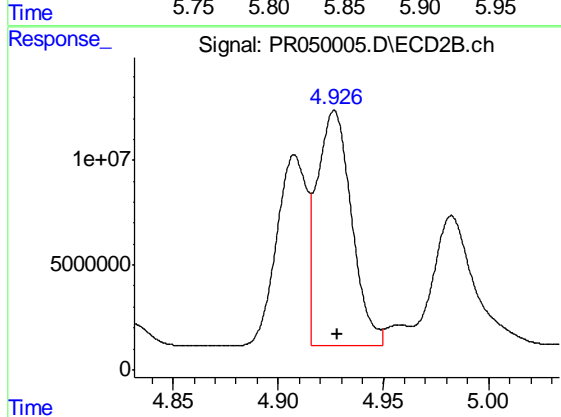
#3 AR-1016-1

R.T.: 4.908 min
Delta R.T.: 0.000 min
Response: 91434455
Conc: 337.00 ng/ml



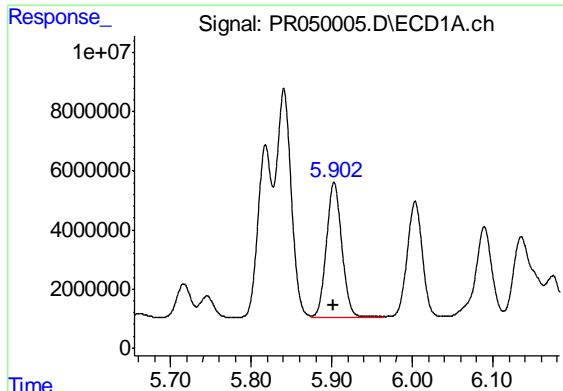
#4 AR-1016-2

R.T.: 5.841 min
Delta R.T.: 0.000 min
Response: 97531616
Conc: 324.02 ng/ml



#4 AR-1016-2

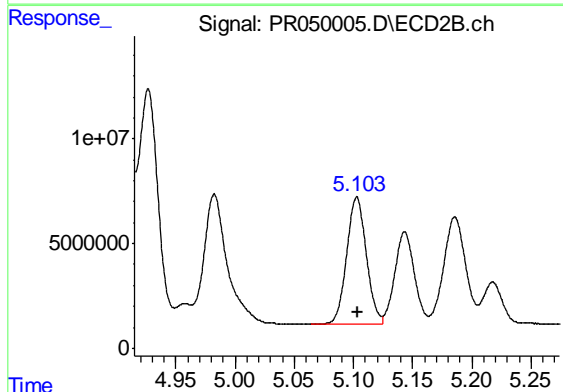
R.T.: 4.927 min
Delta R.T.: -0.001 min
Response: 127712108
Conc: 321.20 ng/ml



#5 AR-1016-3

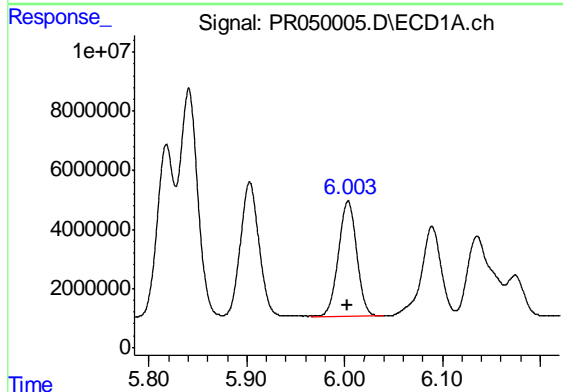
R.T.: 5.903 min
 Delta R.T.: 0.001 min
 Response: 60001010
 Conc: 330.68 ng/ml

Instrument :
 ECD_R
 ClientSampleId :
 AR12423057



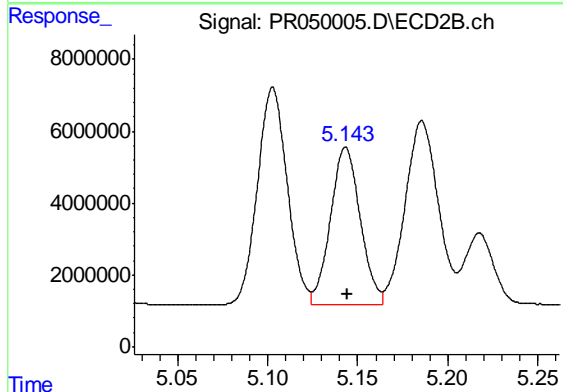
#5 AR-1016-3

R.T.: 5.103 min
 Delta R.T.: -0.001 min
 Response: 70025002
 Conc: 334.83 ng/ml



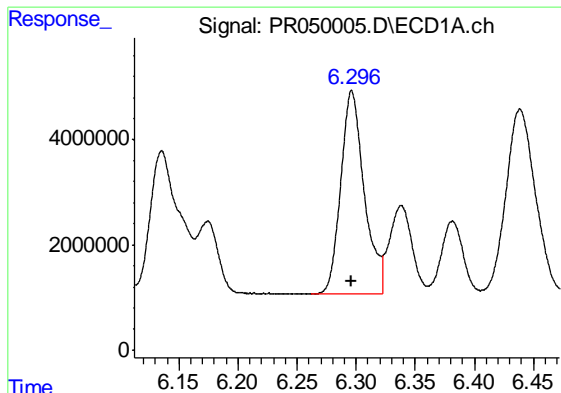
#6 AR-1016-4

R.T.: 6.004 min
 Delta R.T.: 0.000 min
 Response: 50672523
 Conc: 334.02 ng/ml



#6 AR-1016-4

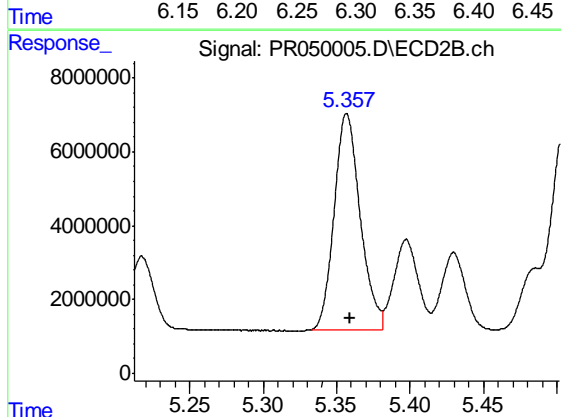
R.T.: 5.143 min
 Delta R.T.: -0.001 min
 Response: 50684850
 Conc: 311.79 ng/ml



#7 AR-1016-5

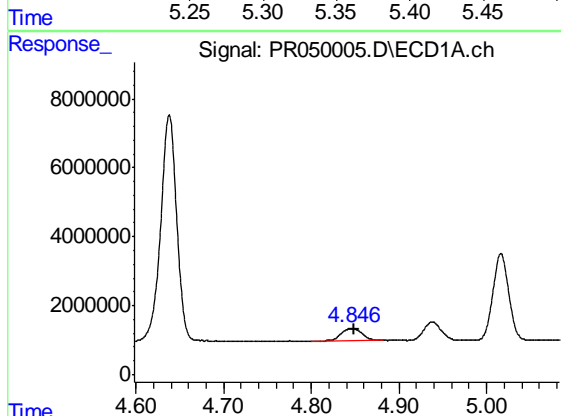
R.T.: 6.296 min
 Delta R.T.: 0.000 min
 Response: 52991351
 Conc: 344.69 ng/ml

Instrument :
 ECD_R
 ClientSampleId :
 AR12423057



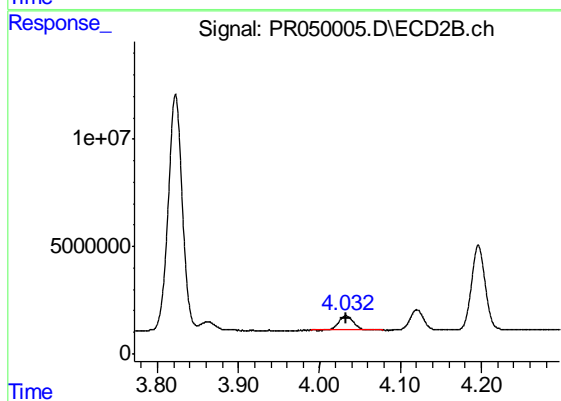
#7 AR-1016-5

R.T.: 5.357 min
 Delta R.T.: -0.002 min
 Response: 72180442
 Conc: 333.37 ng/ml



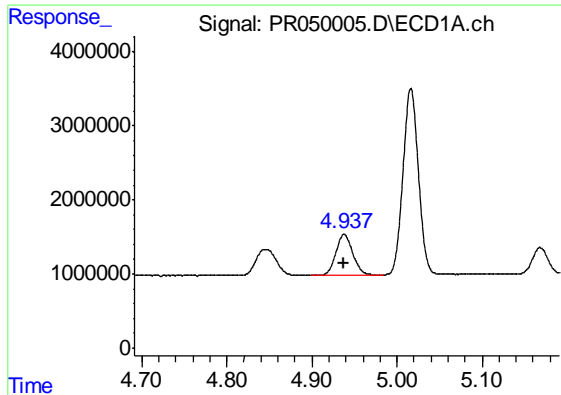
#8 AR-1221-1

R.T.: 4.847 min
 Delta R.T.: -0.002 min
 Response: 5824477
 Conc: 105.57 ng/ml



#8 AR-1221-1

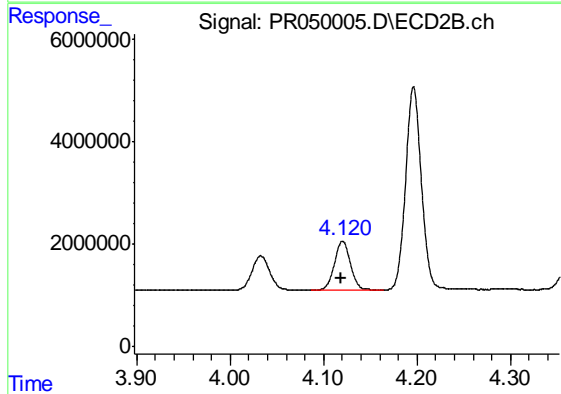
R.T.: 4.033 min
 Delta R.T.: 0.000 min
 Response: 8604993
 Conc: 105.66 ng/ml



#9 AR-1221-2

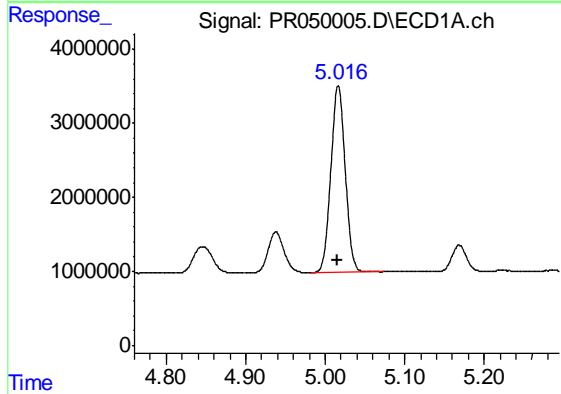
R.T.: 4.938 min
 Delta R.T.: 0.001 min
 Response: 7510590
 Conc: 187.14 ng/ml

Instrument :
 ECD_R
 ClientSampleId :
 AR12423057



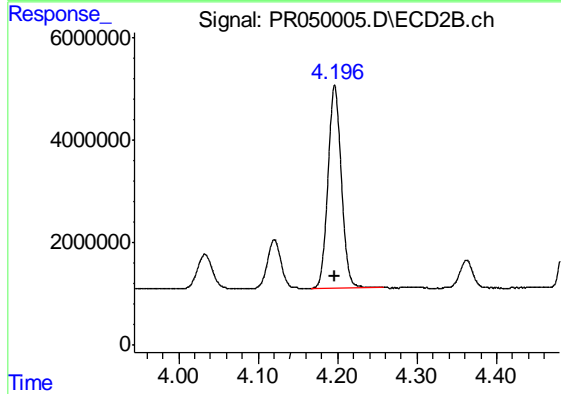
#9 AR-1221-2

R.T.: 4.120 min
 Delta R.T.: 0.002 min
 Response: 11222475
 Conc: 193.07 ng/ml



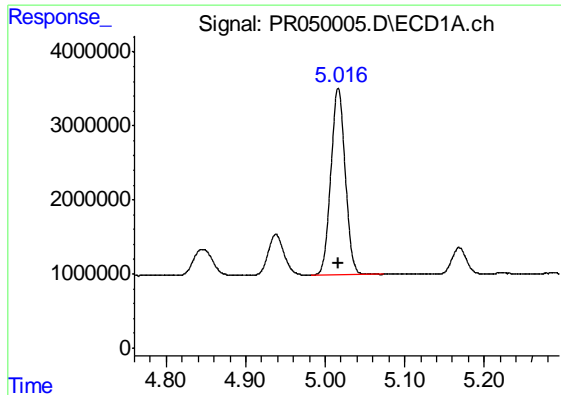
#10 AR-1221-3

R.T.: 5.016 min
 Delta R.T.: 0.001 min
 Response: 31628331
 Conc: 236.06 ng/ml



#10 AR-1221-3

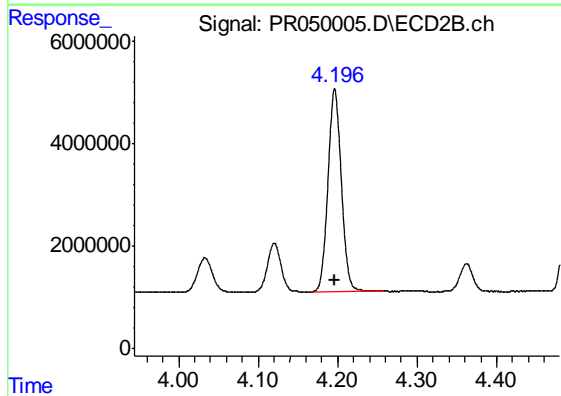
R.T.: 4.196 min
 Delta R.T.: 0.000 min
 Response: 46316471
 Conc: 235.75 ng/ml



#11 AR-1232-1

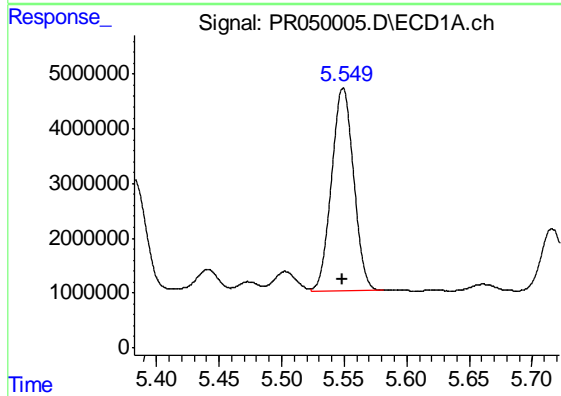
R.T.: 5.016 min
 Delta R.T.: 0.000 min
 Response: 31628331
 Conc: 297.60 ng/ml

Instrument :
 ECD_R
 ClientSampled :
 AR12423057



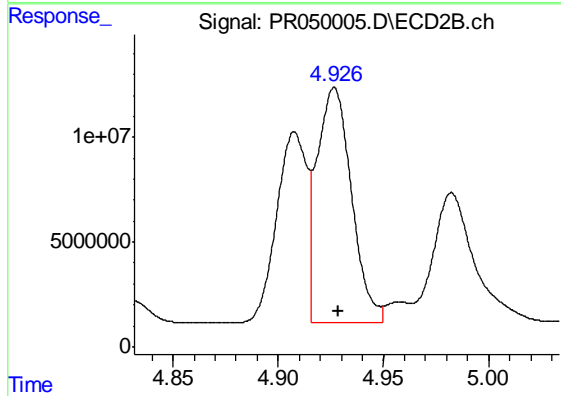
#11 AR-1232-1

R.T.: 4.196 min
 Delta R.T.: 0.000 min
 Response: 46316471
 Conc: 300.91 ng/ml



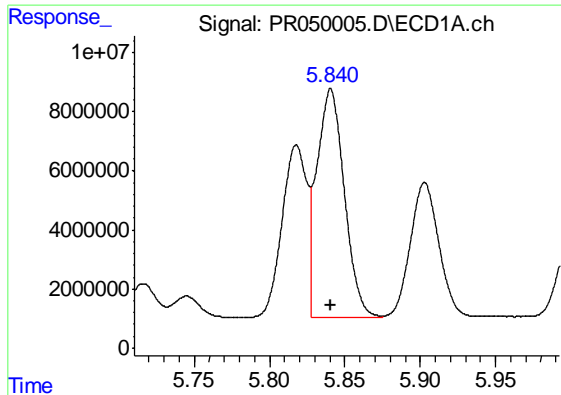
#12 AR-1232-2

R.T.: 5.549 min
 Delta R.T.: 0.000 min
 Response: 45591755
 Conc: 751.92 ng/ml



#12 AR-1232-2

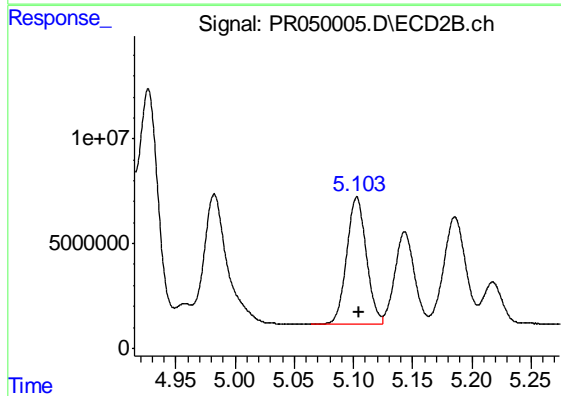
R.T.: 4.927 min
 Delta R.T.: -0.002 min
 Response: 127712108
 Conc: 783.29 ng/ml



#13 AR-1232-3

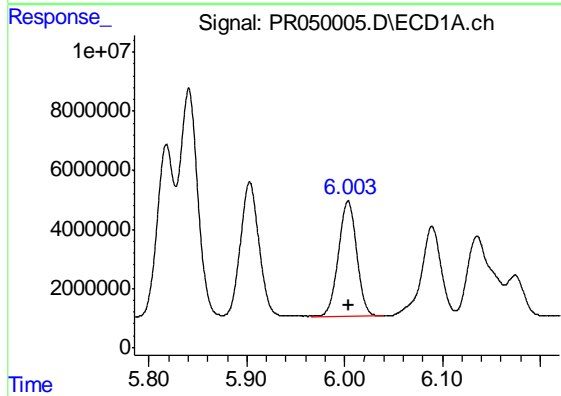
R.T.: 5.841 min
 Delta R.T.: 0.000 min
 Response: 97531616
 Conc: 777.47 ng/ml

Instrument :
 ECD_R
 ClientSampleId :
 AR12423057



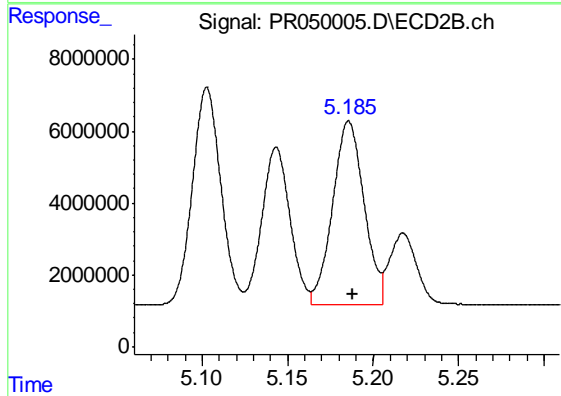
#13 AR-1232-3

R.T.: 5.103 min
 Delta R.T.: -0.002 min
 Response: 70025002
 Conc: 814.05 ng/ml



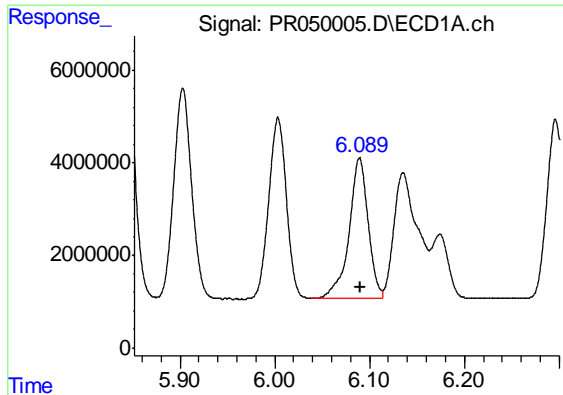
#14 AR-1232-4

R.T.: 6.004 min
 Delta R.T.: 0.000 min
 Response: 50672523
 Conc: 806.00 ng/ml



#14 AR-1232-4

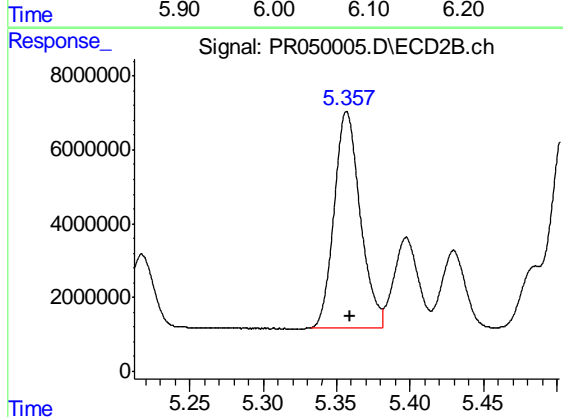
R.T.: 5.186 min
 Delta R.T.: -0.002 min
 Response: 65649495
 Conc: 874.39 ng/ml



#15 AR-1232-5

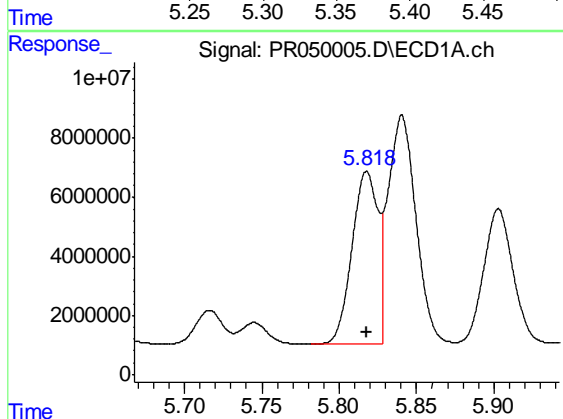
R.T.: 6.089 min
Delta R.T.: 0.000 min
Response: 42845254
Conc: 861.07 ng/ml

Instrument :
ECD_R
ClientSampleId :
AR12423057



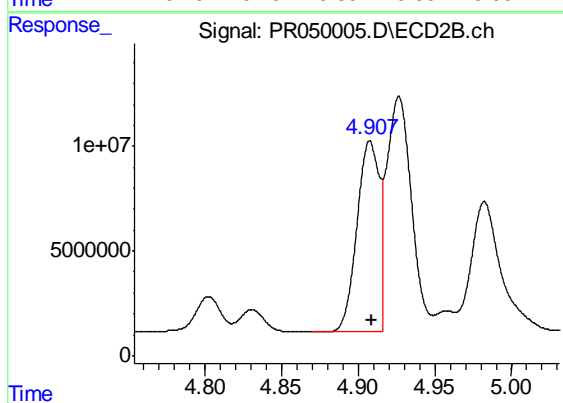
#15 AR-1232-5

R.T.: 5.357 min
Delta R.T.: -0.003 min
Response: 72180442
Conc: 858.08 ng/ml



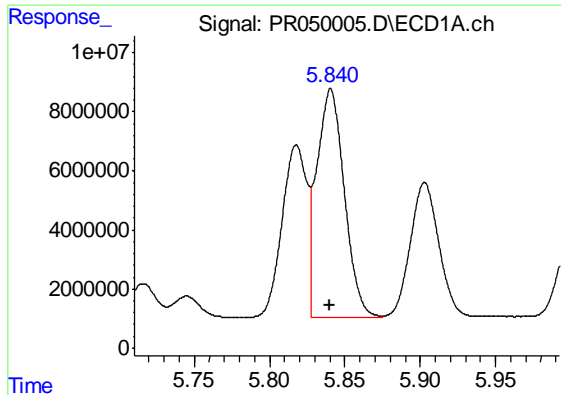
#16 AR-1242-1

R.T.: 5.818 min
Delta R.T.: 0.000 min
Response: 67674046
Conc: 354.32 ng/ml



#16 AR-1242-1

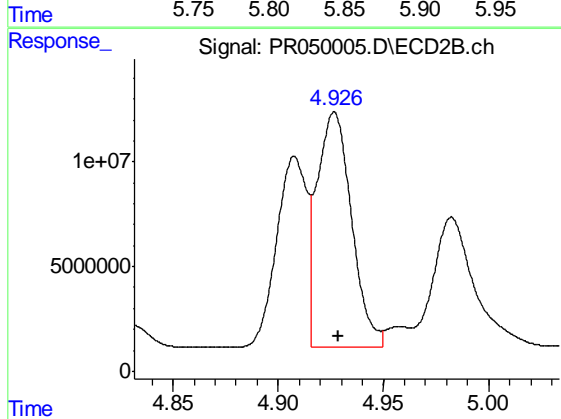
R.T.: 4.908 min
Delta R.T.: -0.001 min
Response: 91434455
Conc: 375.98 ng/ml



#17 AR-1242-2

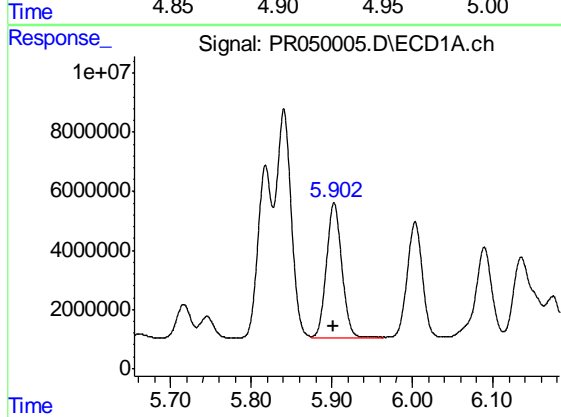
R.T.: 5.841 min
 Delta R.T.: 0.000 min
 Response: 97531616
 Conc: 364.04 ng/ml

Instrument :
 ECD_R
 ClientSampleId :
 AR12423057



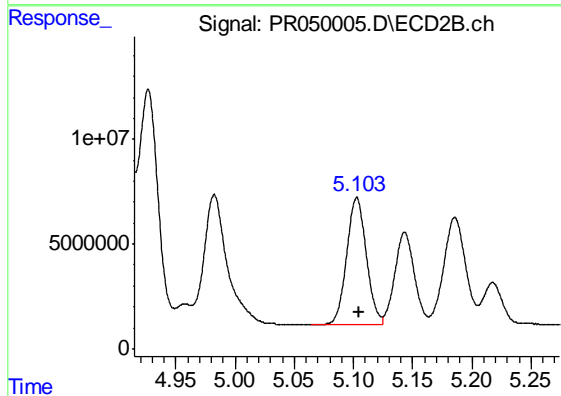
#17 AR-1242-2

R.T.: 4.927 min
 Delta R.T.: -0.002 min
 Response: 127712108
 Conc: 361.79 ng/ml



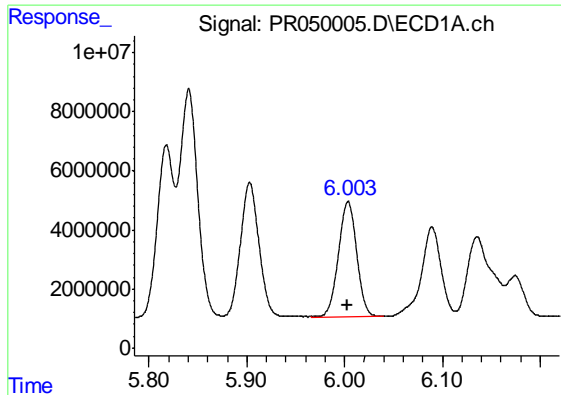
#18 AR-1242-3

R.T.: 5.903 min
 Delta R.T.: 0.000 min
 Response: 60001010
 Conc: 367.91 ng/ml



#18 AR-1242-3

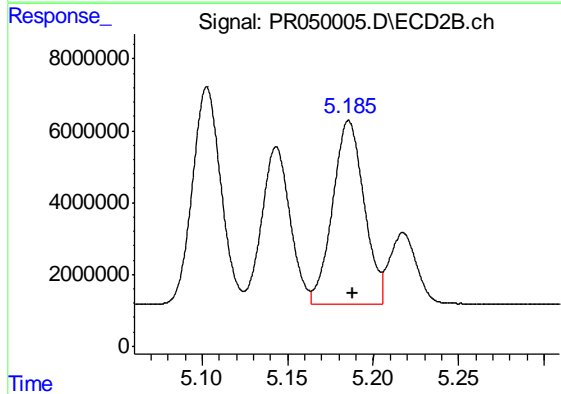
R.T.: 5.103 min
 Delta R.T.: -0.001 min
 Response: 70025002
 Conc: 374.73 ng/ml



#19 AR-1242-4

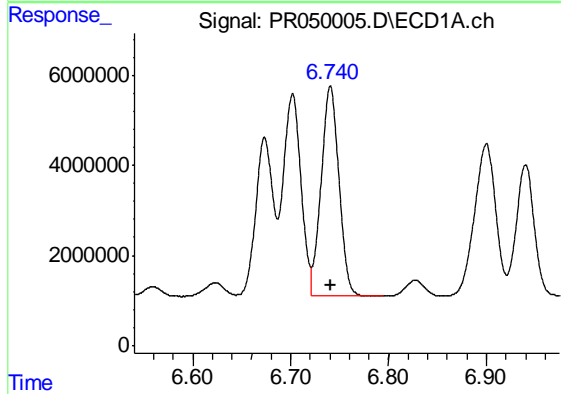
R.T.: 6.004 min
 Delta R.T.: 0.000 min
 Response: 50672523
 Conc: 372.75 ng/ml

Instrument :
 ECD_R
 ClientSampleId :
 AR12423057



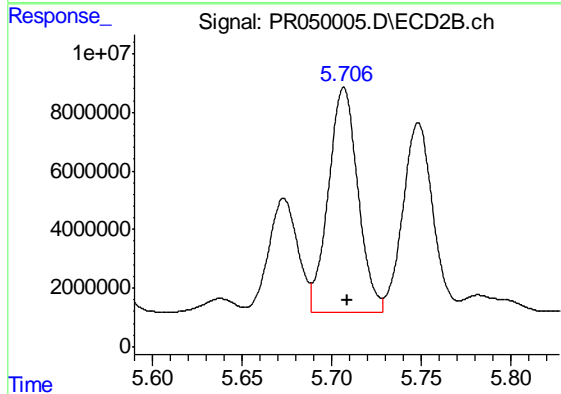
#19 AR-1242-4

R.T.: 5.186 min
 Delta R.T.: -0.002 min
 Response: 65649495
 Conc: 372.81 ng/ml



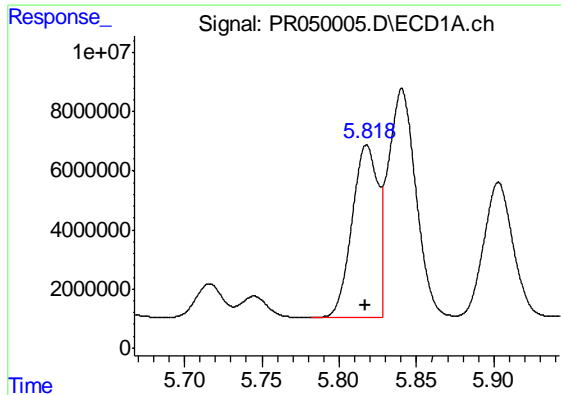
#20 AR-1242-5

R.T.: 6.741 min
 Delta R.T.: 0.000 min
 Response: 58897026
 Conc: 371.90 ng/ml



#20 AR-1242-5

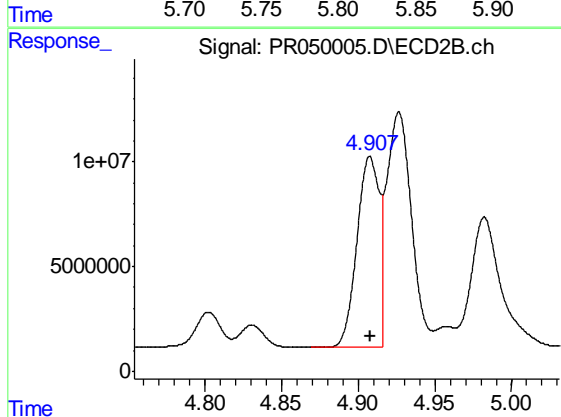
R.T.: 5.707 min
 Delta R.T.: -0.002 min
 Response: 87791540
 Conc: 368.79 ng/ml



#21 AR-1248-1

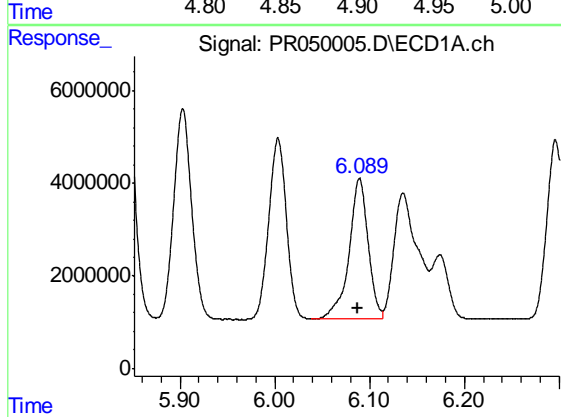
R.T.: 5.818 min
 Delta R.T.: 0.000 min
 Response: 67674046
 Conc: 527.71 ng/ml

Instrument :
 ECD_R
 ClientSampleId :
 AR12423057



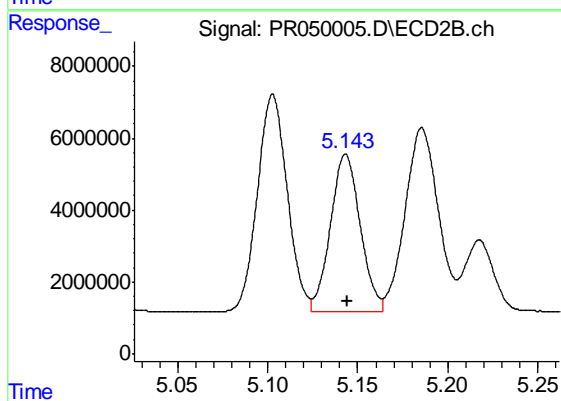
#21 AR-1248-1

R.T.: 4.908 min
 Delta R.T.: 0.000 min
 Response: 91434455
 Conc: 546.64 ng/ml



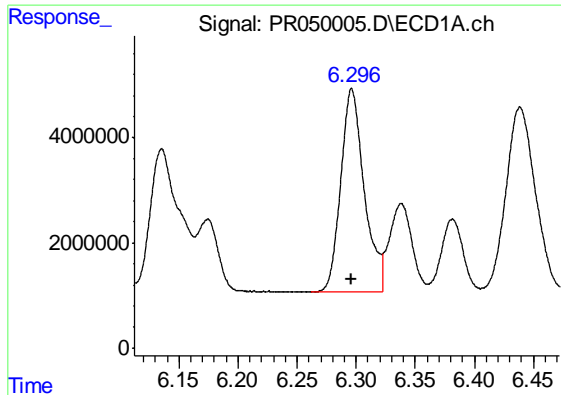
#22 AR-1248-2

R.T.: 6.089 min
 Delta R.T.: 0.001 min
 Response: 42845254
 Conc: 231.90 ng/ml



#22 AR-1248-2

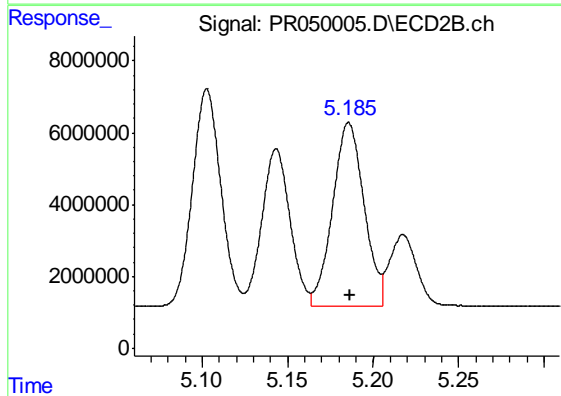
R.T.: 5.143 min
 Delta R.T.: 0.000 min
 Response: 50684850
 Conc: 225.48 ng/ml



#23 AR-1248-3

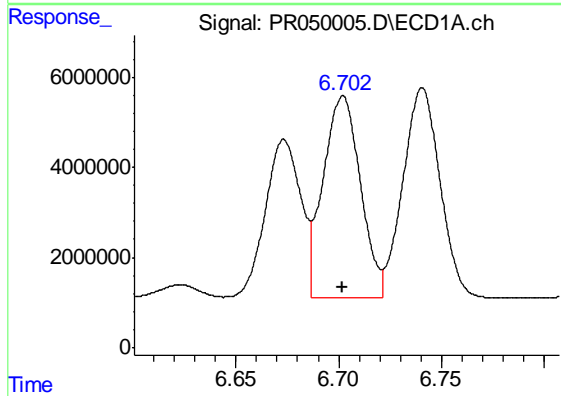
R.T.: 6.296 min
 Delta R.T.: 0.000 min
 Response: 52991351
 Conc: 253.71 ng/ml

Instrument :
 ECD_R
 ClientSampleId :
 AR12423057



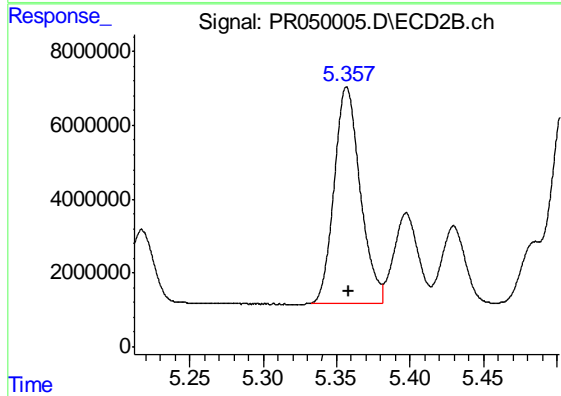
#23 AR-1248-3

R.T.: 5.186 min
 Delta R.T.: 0.000 min
 Response: 65649495
 Conc: 274.79 ng/ml



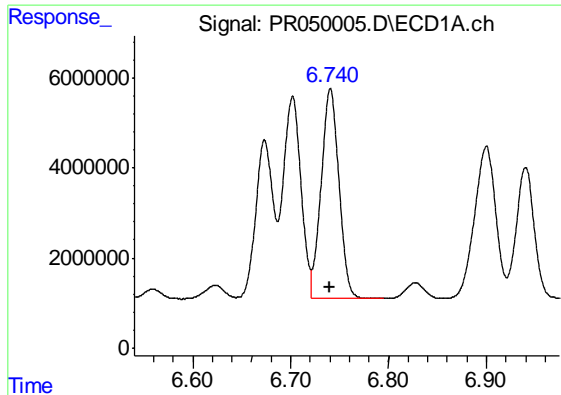
#24 AR-1248-4

R.T.: 6.702 min
 Delta R.T.: 0.000 min
 Response: 56648259
 Conc: 226.22 ng/ml



#24 AR-1248-4

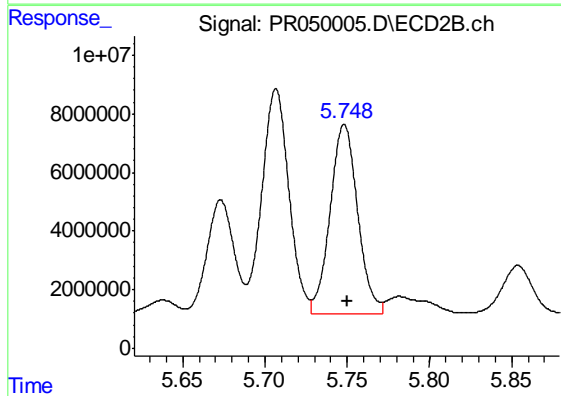
R.T.: 5.357 min
 Delta R.T.: -0.001 min
 Response: 72180442
 Conc: 245.48 ng/ml



#25 AR-1248-5

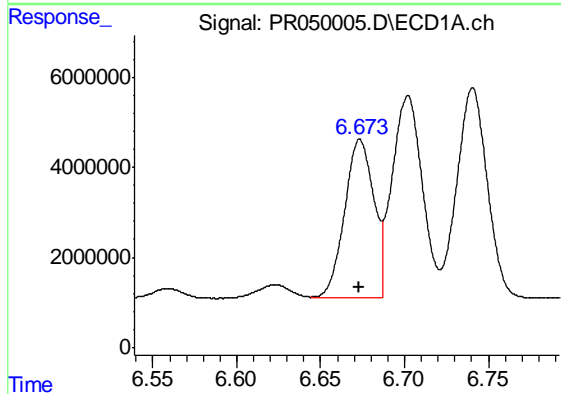
R.T.: 6.741 min
 Delta R.T.: 0.000 min
 Response: 58897026
 Conc: 243.28 ng/ml

Instrument :
 ECD_R
 ClientSampleId :
 AR12423057



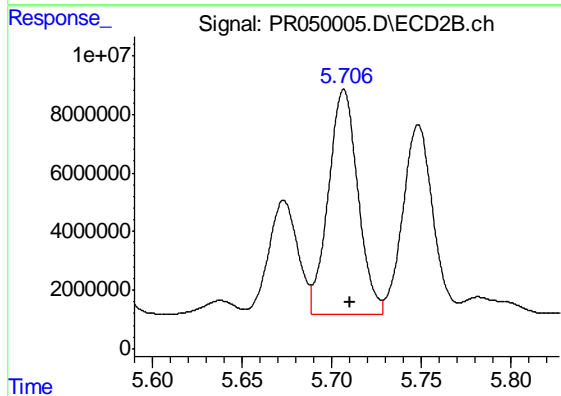
#25 AR-1248-5

R.T.: 5.748 min
 Delta R.T.: -0.002 min
 Response: 75138897
 Conc: 245.72 ng/ml



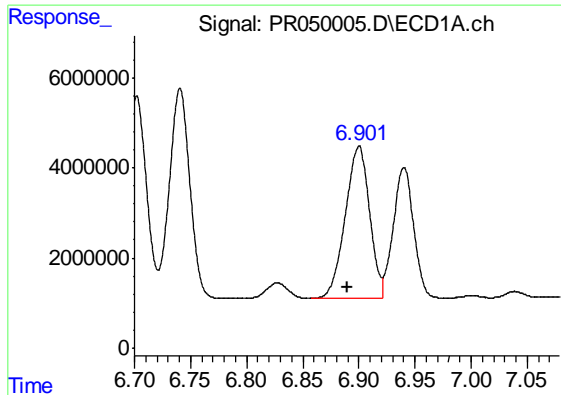
#26 AR-1254-1

R.T.: 6.673 min
 Delta R.T.: 0.000 min
 Response: 42618713
 Conc: 121.82 ng/ml



#26 AR-1254-1

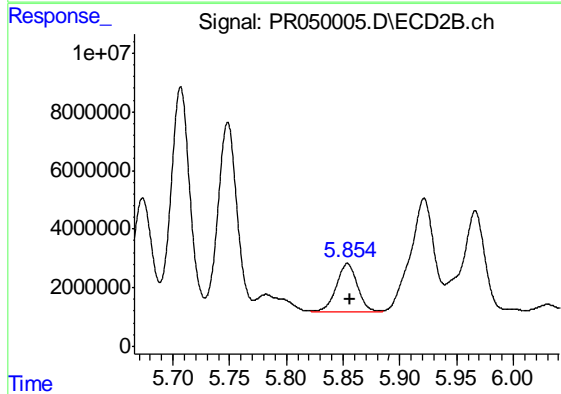
R.T.: 5.707 min
 Delta R.T.: -0.004 min
 Response: 87791540
 Conc: 134.16 ng/ml



#27 AR-1254-2

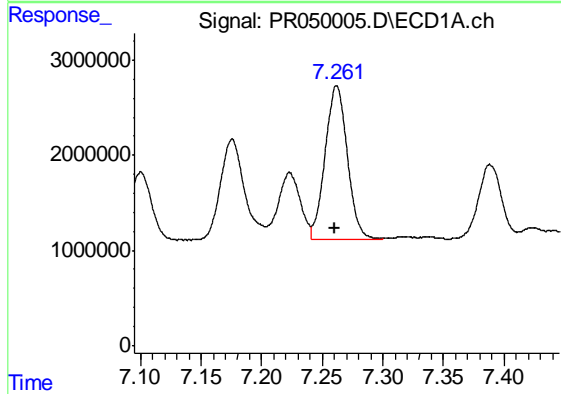
R.T.: 6.900 min
 Delta R.T.: 0.010 min
 Response: 50901468
 Conc: 91.59 ng/ml

Instrument :
 ECD_R
 ClientSampleId :
 AR12423057



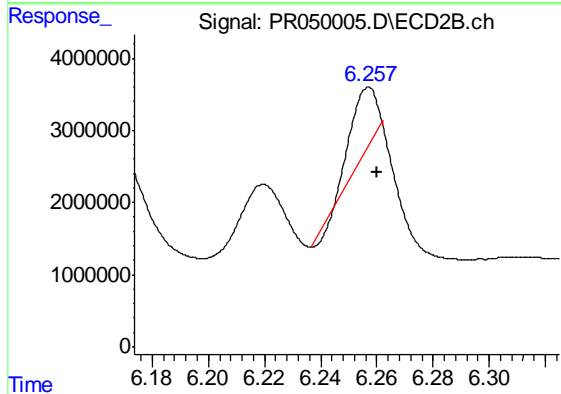
#27 AR-1254-2

R.T.: 5.854 min
 Delta R.T.: -0.003 min
 Response: 21033775
 Conc: 37.41 ng/ml



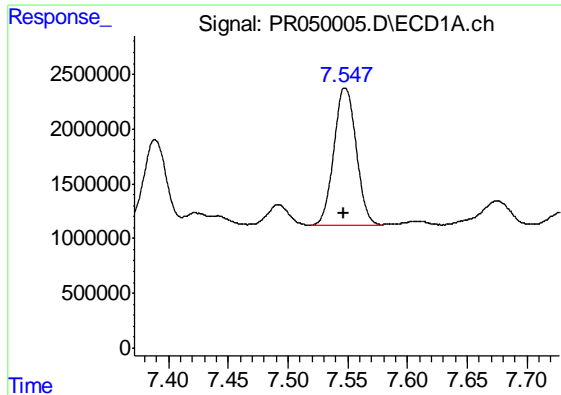
#28 AR-1254-3

R.T.: 7.262 min
 Delta R.T.: 0.002 min
 Response: 20746949
 Conc: 33.11 ng/ml



#28 AR-1254-3

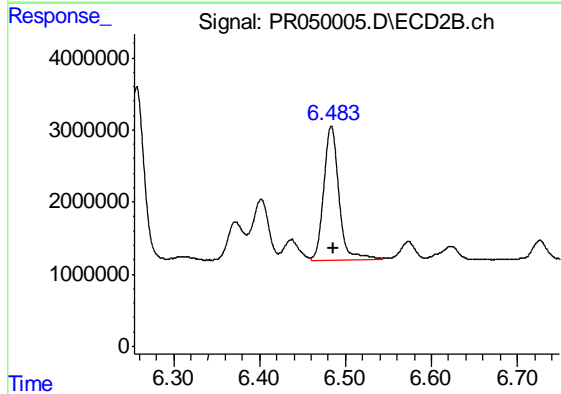
R.T.: 6.257 min
 Delta R.T.: -0.003 min
 Response: 5236959
 Conc: 5.32 ng/ml



#29 AR-1254-4

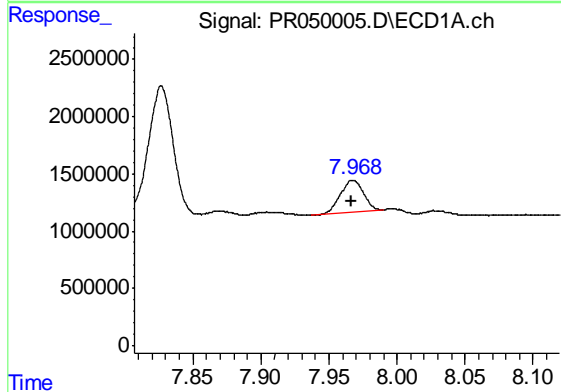
R.T.: 7.548 min
 Delta R.T.: 0.000 min
 Response: 16318762
 Conc: 33.96 ng/ml

Instrument :
 ECD_R
 ClientSampleId :
 AR12423057



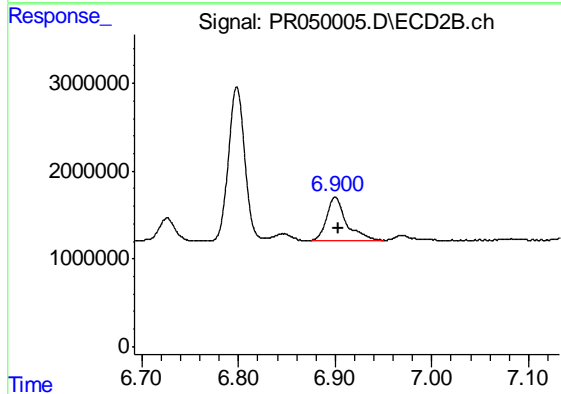
#29 AR-1254-4

R.T.: 6.483 min
 Delta R.T.: -0.003 min
 Response: 22852863
 Conc: 37.83 ng/ml



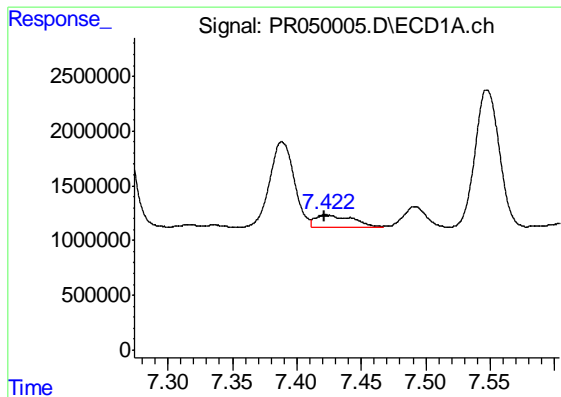
#30 AR-1254-5

R.T.: 7.968 min
 Delta R.T.: 0.001 min
 Response: 3318906
 Conc: 6.21 ng/ml



#30 AR-1254-5

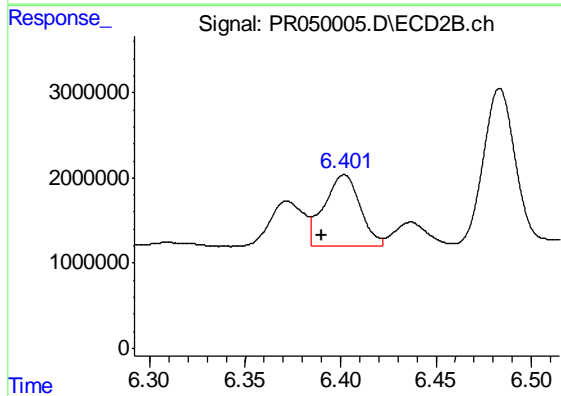
R.T.: 6.900 min
 Delta R.T.: -0.004 min
 Response: 7079482
 Conc: 8.12 ng/ml



#31 AR-1260-1

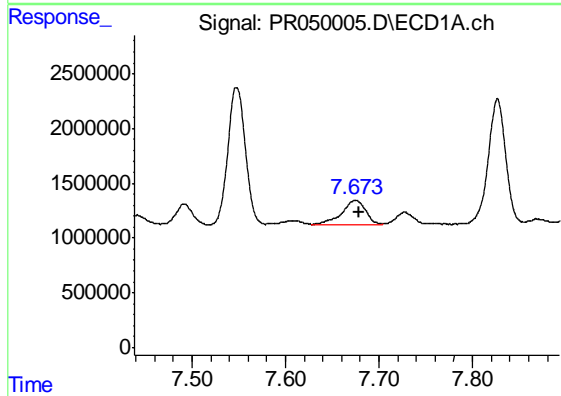
R.T.: 7.422 min
 Delta R.T.: 0.001 min
 Response: 2413431
 Conc: 8.49 ng/ml

Instrument :
 ECD_R
 ClientSampleId :
 AR12423057



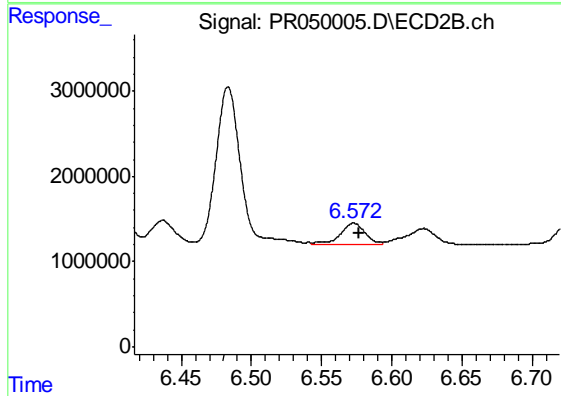
#31 AR-1260-1

R.T.: 6.402 min
 Delta R.T.: 0.012 min
 Response: 11112331
 Conc: 27.57 ng/ml



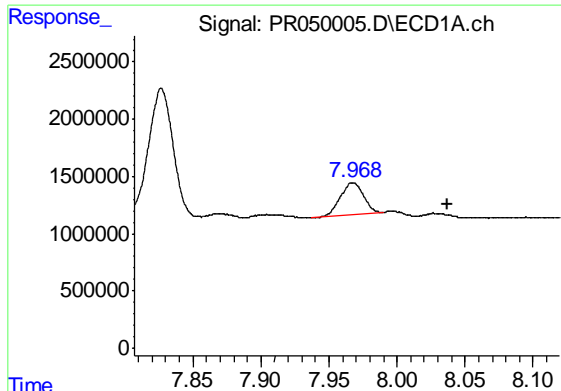
#32 AR-1260-2

R.T.: 7.675 min
 Delta R.T.: -0.004 min
 Response: 3847207
 Conc: 10.96 ng/ml



#32 AR-1260-2

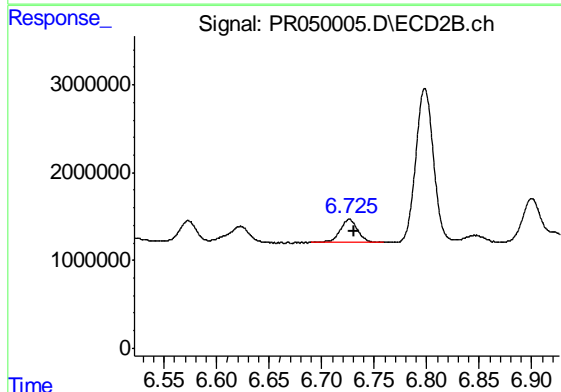
R.T.: 6.573 min
 Delta R.T.: -0.003 min
 Response: 3217224
 Conc: 6.55 ng/ml



#33 AR-1260-3

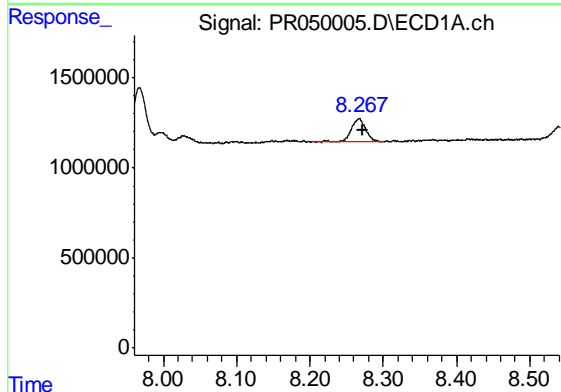
R.T.: 7.968 min
 Delta R.T.: -0.069 min
 Response: 3318906
 Conc: 12.13 ng/ml

Instrument :
 ECD_R
 ClientSampleId :
 AR12423057



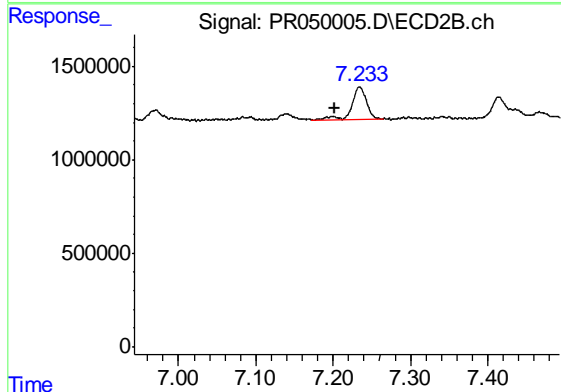
#33 AR-1260-3

R.T.: 6.726 min
 Delta R.T.: -0.005 min
 Response: 3104207
 Conc: 6.60 ng/ml



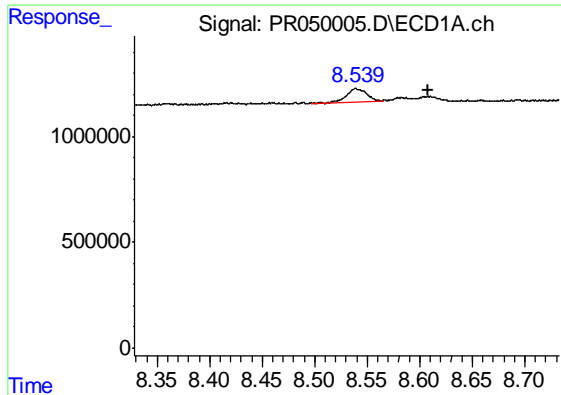
#34 AR-1260-4

R.T.: 8.267 min
 Delta R.T.: -0.005 min
 Response: 1795462
 Conc: 5.53 ng/ml



#34 AR-1260-4

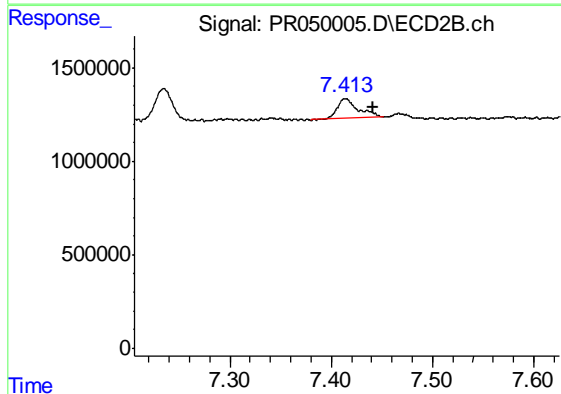
R.T.: 7.234 min
 Delta R.T.: 0.032 min
 Response: 2274957
 Conc: 5.66 ng/ml



#35 AR-1260-5

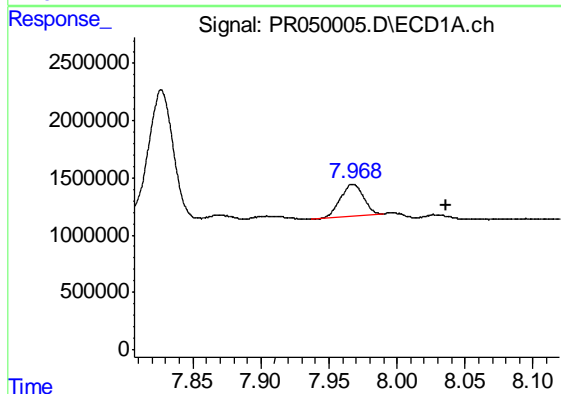
R.T.: 8.539 min
 Delta R.T.: -0.070 min
 Response: 800390
 Conc: 1.18 ng/ml

Instrument :
 ECD_R
 ClientSampleId :
 AR12423057



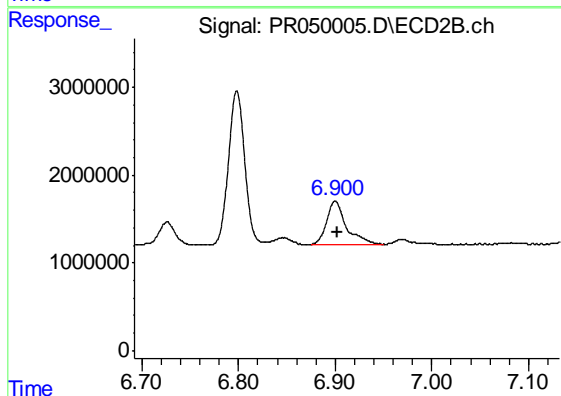
#35 AR-1260-5

R.T.: 7.414 min
 Delta R.T.: -0.027 min
 Response: 1448796
 Conc: 1.45 ng/ml



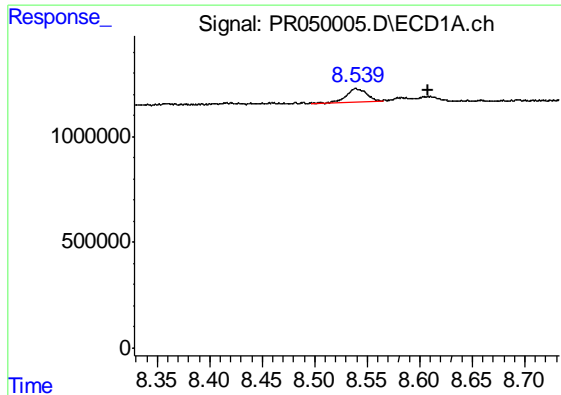
#36 AR-1262-1

R.T.: 7.968 min
 Delta R.T.: -0.069 min
 Response: 3318906
 Conc: 6.76 ng/ml



#36 AR-1262-1

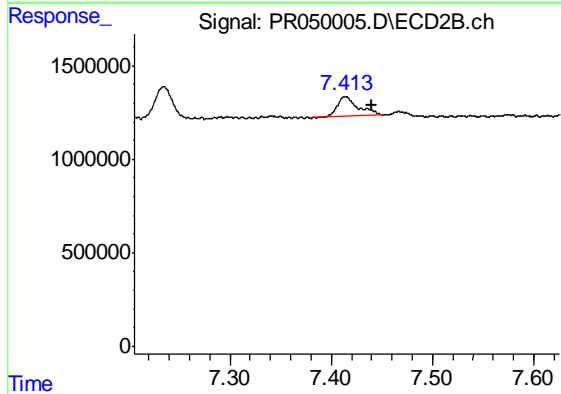
R.T.: 6.900 min
 Delta R.T.: -0.002 min
 Response: 7079482
 Conc: 19.86 ng/ml



#37 AR-1262-2

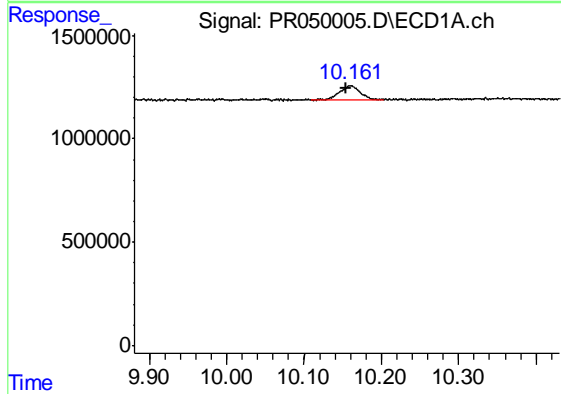
R.T.: 8.539 min
 Delta R.T.: -0.069 min
 Response: 800390
 Conc: 0.85 ng/ml

Instrument :
 ECD_R
 ClientSampleId :
 AR12423057



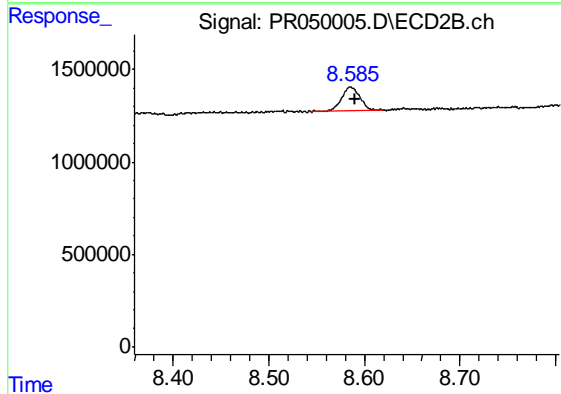
#37 AR-1262-2

R.T.: 7.414 min
 Delta R.T.: -0.025 min
 Response: 1448796
 Conc: 1.11 ng/ml



#45 AR-1268-5

R.T.: 10.160 min
 Delta R.T.: 0.006 min
 Response: 1269708
 Conc: 0.46 ng/ml



#45 AR-1268-5

R.T.: 8.585 min
 Delta R.T.: -0.005 min
 Response: 1733026
 Conc: 0.50 ng/ml