

Data Path : Z:\pestpcbsrv\HPCHEM1\ECD_R\Data\PR042021\
 Data File : PR049992.D
 Signal(s) : Signal #1: ECD1A.ch Signal #2: ECD2B.ch
 Acq On : 20 Apr 2021 11:31
 Operator : DD\AJ
 Sample : M2031-07
 Misc :
 ALS Vial : 11 Sample Multiplier: 1

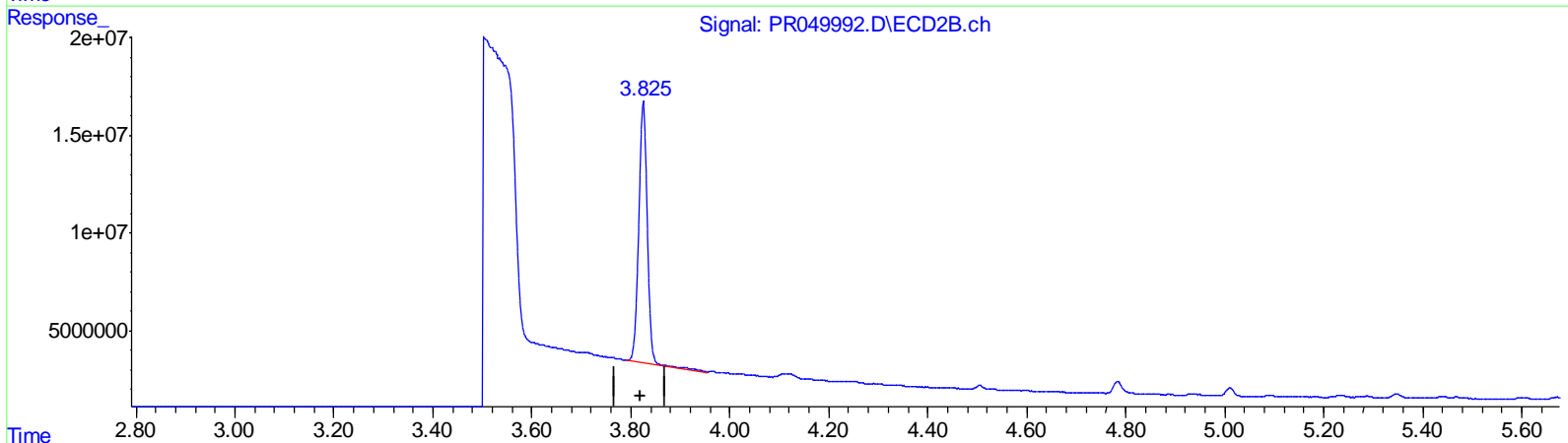
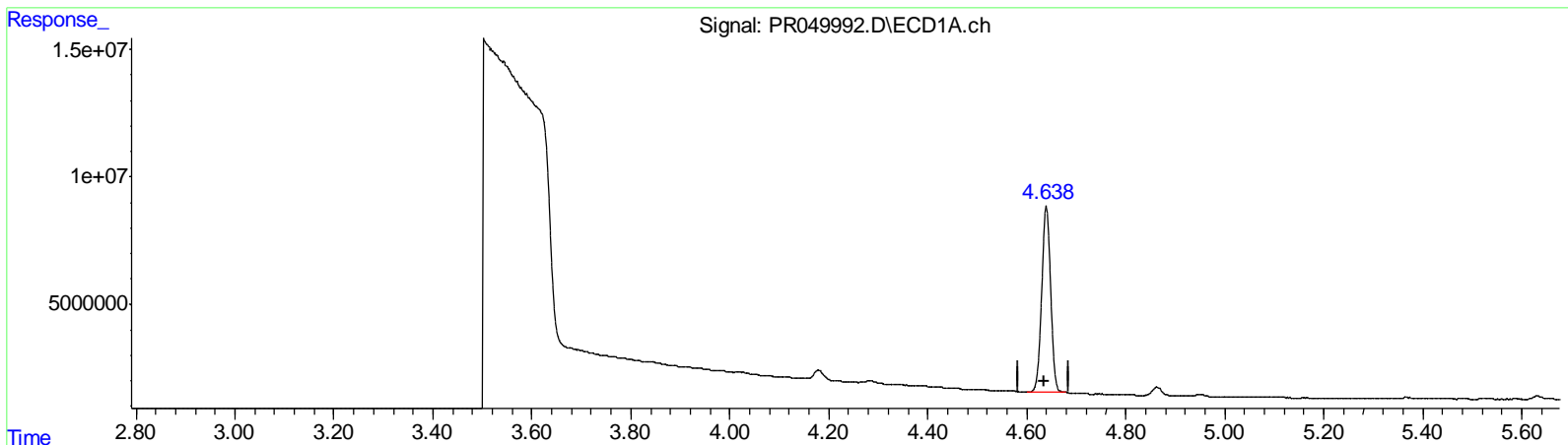
Instrument :
 ECD_R
 ClientSampled :
 BG537

Manual Integrations
 APPROVED

Ankita
 4/22/2021 11:54:37 AM

Integration File signal 1: autoint1.e
 Integration File signal 2: autoint2.e
 Quant Time: Apr 21 02:48:35 2021
 Quant Method : Z:\pestpcbsrv\HPCHEM1\ECD_R\Method\PR040621CLP.M
 Quant Title : GC EXTRACTABLES
 QLast Update : Wed Apr 07 06:22:57 2021
 Response via : Initial Calibration
 Integrator: ChemStation

Volume Inj. : 1 µl
 Signal #1 Phase : ZB MR1 Signal #2 Phase: ZB MR2
 Signal #1 Info : 30Mx0.32mmx 0.5µm Signal #2 Info : 30M x 0.32mm x 0.25µm



QEdit

(1) Tetrachloro-m-xylene (SA)

4.639min 20.511 ng/ml

response 91247637

(1) Tetrachloro-m-xylene #2 (SA)

3.825min 21.612 ng/ml

response 159496017

Data Path : Z:\pestpcbsrv\HPCHEM1\ECD_R\Data\PR042021\
 Data File : PR049992.D
 Signal(s) : Signal #1: ECD1A.ch Signal #2: ECD2B.ch
 Acq On : 20 Apr 2021 11:31
 Operator : DD\AJ
 Sample : M2031-07
 Misc :
 ALS Vial : 11 Sample Multiplier: 1

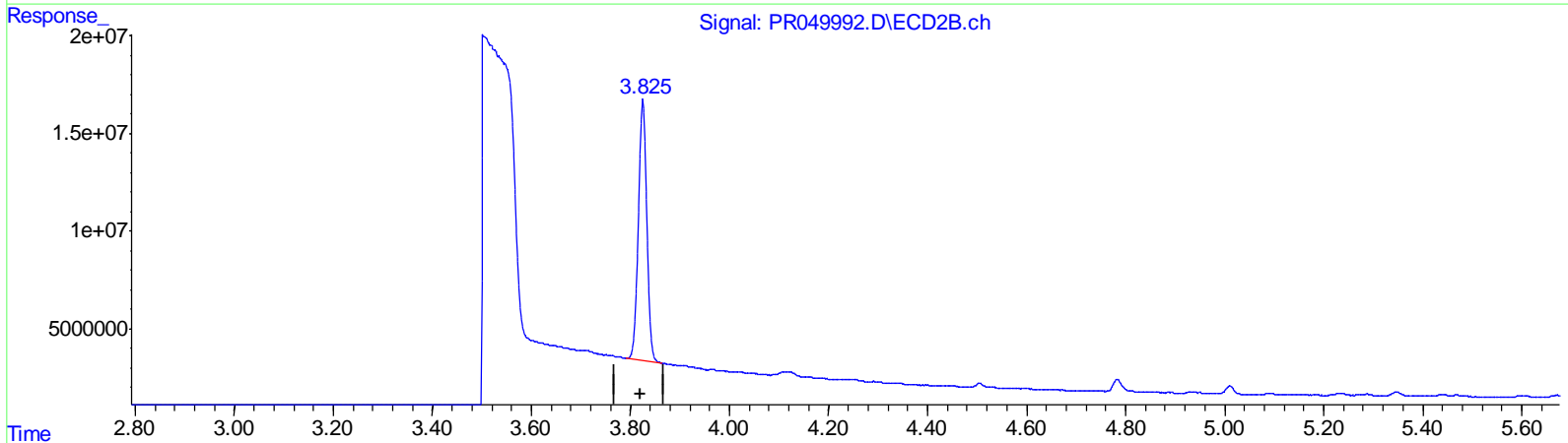
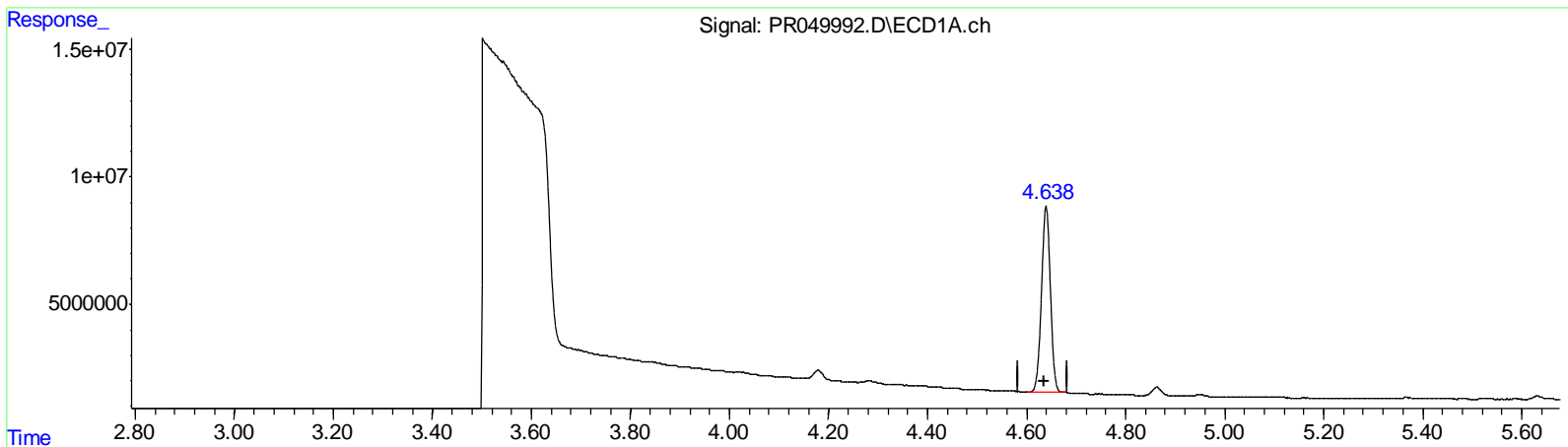
Instrument :
 ECD_R
 ClientSampled :
 BG537

Manual Integrations
 APPROVED

Ankita
 4/22/2021 11:54:37 AM

Integration File signal 1: autoint1.e
 Integration File signal 2: autoint2.e
 Quant Time: Apr 21 02:48:35 2021
 Quant Method : Z:\pestpcbsrv\HPCHEM1\ECD_R\Method\PR040621CLP.M
 Quant Title : GC EXTRACTABLES
 QLast Update : Wed Apr 07 06:22:57 2021
 Response via : Initial Calibration
 Integrator: ChemStation

Volume Inj. : 1 µl
 Signal #1 Phase : ZB MR1 Signal #2 Phase: ZB MR2
 Signal #1 Info : 30Mx0.32mmx 0.5µm Signal #2 Info : 30M x 0.32mm x 0.25µm



QEdit

(1) Tetrachloro-m-xylene (SA)

4.639min 20.511 ng/ml

response 91247637

(1) Tetrachloro-m-xylene #2 (SA)

3.825min 21.394 ng/ml m

response 157884598

(+) = Expected Retention Time

Data Path : Z:\pestpcbsrv\HPCHEM1\ECD_R\Data\PR042021\
 Data File : PR049992.D
 Signal(s) : Signal #1: ECD1A.ch Signal #2: ECD2B.ch
 Acq On : 20 Apr 2021 11:31
 Operator : DD\AJ
 Sample : M2031-07
 Misc :
 ALS Vial : 11 Sample Multiplier: 1

Instrument :
 ECD_R
 ClientSampled :
 BG537

Manual Integrations
 APPROVED

Ankita
 4/22/2021 11:54:37 AM

Integration File signal 1: autoint1.e
 Integration File signal 2: autoint2.e
 Quant Time: Apr 21 02:48:35 2021
 Quant Method : Z:\pestpcbsrv\HPCHEM1\ECD_R\Method\PR040621CLP.M
 Quant Title : GC EXTRACTABLES
 QLast Update : Wed Apr 07 06:22:57 2021
 Response via : Initial Calibration
 Integrator: ChemStation

Volume Inj. : 1 µl
 Signal #1 Phase : ZB MR1 Signal #2 Phase: ZB MR2
 Signal #1 Info : 30Mx0.32mmx 0.5µm Signal #2 Info : 30M x 0.32mm x 0.25µm

Compound	RT#1	RT#2	Resp#1	Resp#2	ng/ml	ng/ml

System Monitoring Compounds						
1) SA Tetrachlo...	4.639	3.825	91247637	157.9E6	20.511	21.394m
2) SA Decachlor...	10.510	8.852	196.0E6	279.7E6	29.696	33.464

Handwritten: AJ
 04/26/21

Target Compounds

(f)=RT Delta > 1/2 Window (#)=Amounts differ by > 25% (m)=manual int.