

Data Path : Z:\pestpcbsrv\HPCHEM1\ECD_R\Data\PR042021\
 Data File : PR049998.D
 Signal(s) : Signal #1: ECD1A.ch Signal #2: ECD2B.ch
 Acq On : 20 Apr 2021 13:04
 Operator : DD\AJ
 Sample : M2031-14
 Misc :
 ALS Vial : 17 Sample Multiplier: 1

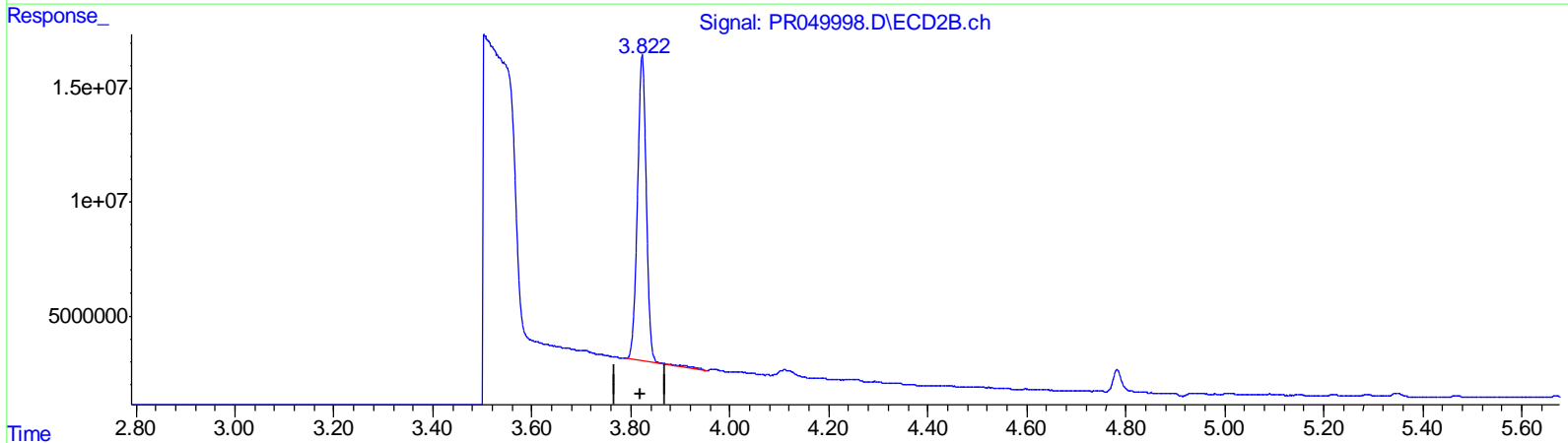
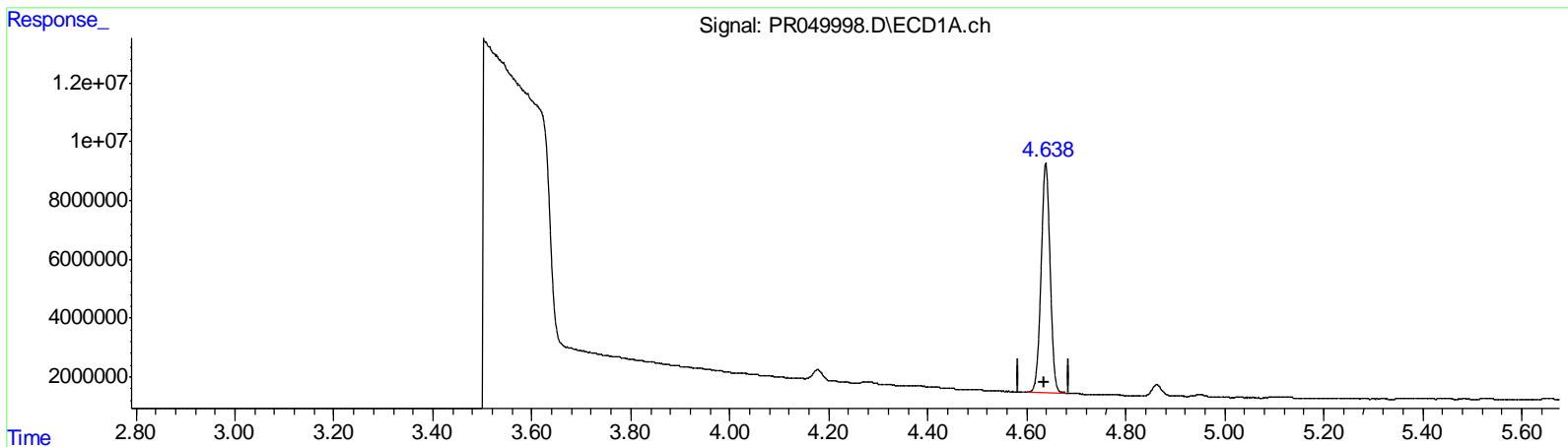
Instrument :
 ECD_R
 ClientSampled :
 A4322

Manual Integrations
 APPROVED

Ankita
 4/22/2021 11:54:47 AM

Integration File signal 1: autoint1.e
 Integration File signal 2: autoint2.e
 Quant Time: Apr 21 02:51:45 2021
 Quant Method : Z:\pestpcbsrv\HPCHEM1\ECD_R\Method\PR040621CLP.M
 Quant Title : GC EXTRACTABLES
 QLast Update : Wed Apr 07 06:22:57 2021
 Response via : Initial Calibration
 Integrator: ChemStation

Volume Inj. : 1 µl
 Signal #1 Phase : ZB MR1 Signal #2 Phase: ZB MR2
 Signal #1 Info : 30Mx0.32mmx 0.5µm Signal #2 Info : 30M x 0.32mm x 0.25µm



QEdit

(1) Tetrachloro-m-xylene (SA)

4.638min 21.976 ng/ml

response 97766837

(1) Tetrachloro-m-xylene #2 (SA)

3.823min 22.712 ng/ml

response 167609549

(+) = Expected Retention Time

Data Path : Z:\pestpcbsrv\HPCHEM1\ECD_R\Data\PR042021\
 Data File : PR049998.D
 Signal(s) : Signal #1: ECD1A.ch Signal #2: ECD2B.ch
 Acq On : 20 Apr 2021 13:04
 Operator : DD\AJ
 Sample : M2031-14
 Misc :
 ALS Vial : 17 Sample Multiplier: 1

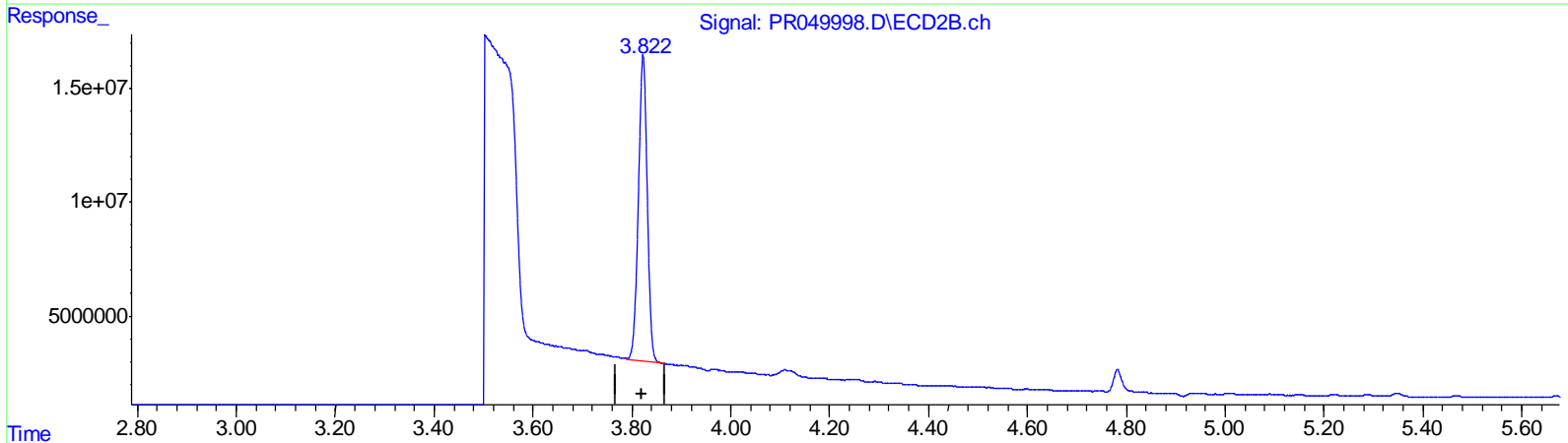
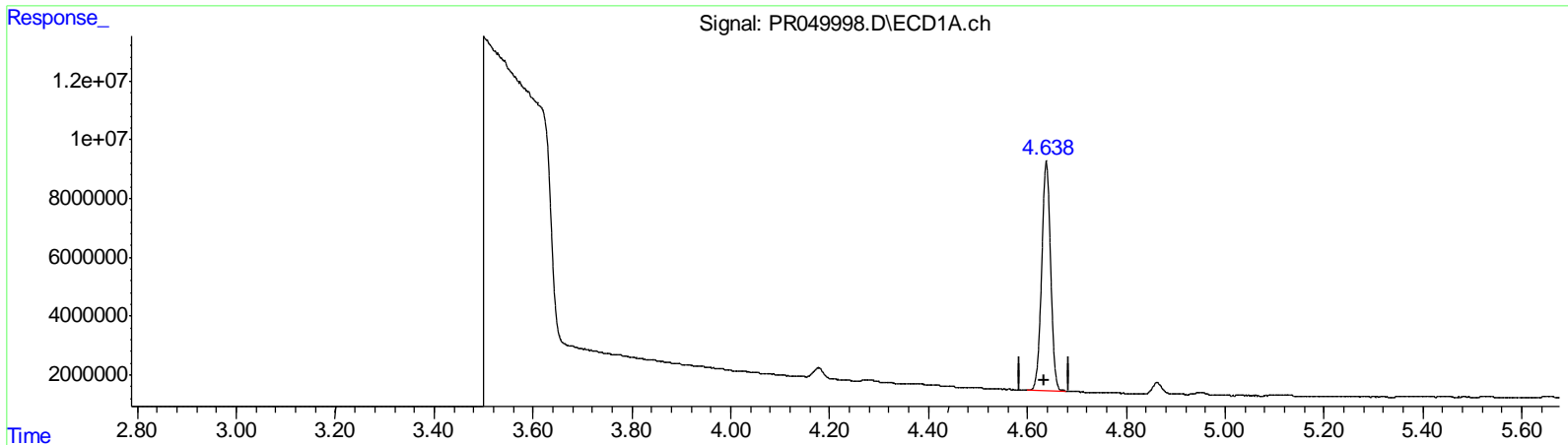
Instrument :
 ECD_R
 ClientSampled :
 A4322

Manual Integrations
 APPROVED

Ankita
 4/22/2021 11:54:47 AM

Integration File signal 1: autoint1.e
 Integration File signal 2: autoint2.e
 Quant Time: Apr 21 02:51:45 2021
 Quant Method : Z:\pestpcbsrv\HPCHEM1\ECD_R\Method\PR040621CLP.M
 Quant Title : GC EXTRACTABLES
 QLast Update : Wed Apr 07 06:22:57 2021
 Response via : Initial Calibration
 Integrator: ChemStation

Volume Inj. : 1 µl
 Signal #1 Phase : ZB MR1 Signal #2 Phase: ZB MR2
 Signal #1 Info : 30Mx0.32mmx 0.5µm Signal #2 Info : 30M x 0.32mm x 0.25µm



QEdit

(1) Tetrachloro-m-xylene (SA)

4.638min 21.976 ng/ml

response 97766837

(1) Tetrachloro-m-xylene #2 (SA)

3.822min 22.602 ng/ml m

response 166798807

(+) = Expected Retention Time

Data Path : Z:\pestpcbsrv\HPCHEM1\ECD_R\Data\PR042021\
 Data File : PR050011.D
 Signal(s) : Signal #1: ECD1A.ch Signal #2: ECD2B.ch
 Acq On : 20 Apr 2021 17:12
 Operator : DD\AJ
 Sample : M2083-02
 Misc :
 ALS Vial : 25 Sample Multiplier: 1

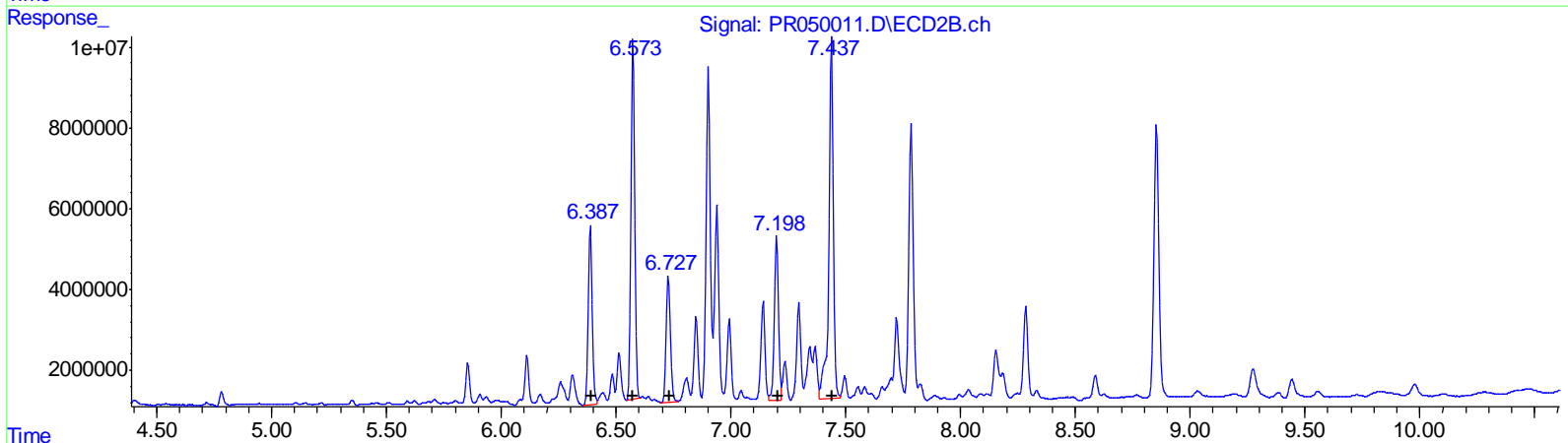
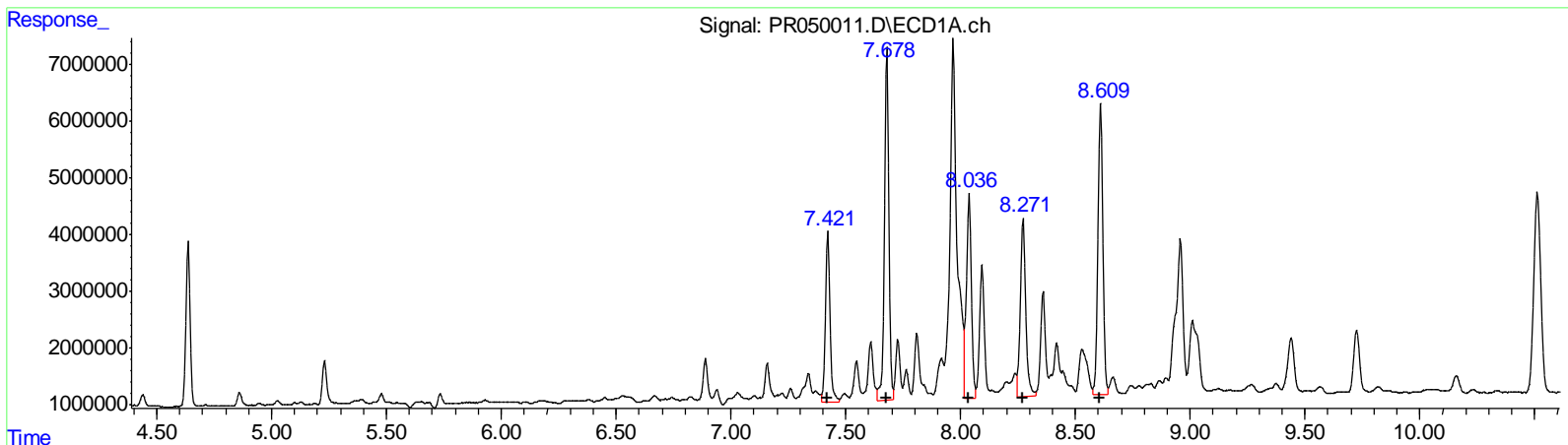
Instrument :
 ECD_R
 ClientSampled :
 A4322

Manual Integrations
 APPROVED

Ankita
 4/22/2021 11:54:47 AM

Integration File signal 1: autoint1.e
 Integration File signal 2: autoint2.e
 Quant Time: Apr 21 03:00:20 2021
 Quant Method : Z:\pestpcbsrv\HPCHEM1\ECD_R\Method\PR040621CLP.M
 Quant Title : GC EXTRACTABLES
 QLast Update : Wed Apr 07 06:22:57 2021
 Response via : Initial Calibration
 Integrator: ChemStation

Volume Inj. : 1 µl
 Signal #1 Phase : ZB MR1 Signal #2 Phase: ZB MR2
 Signal #1 Info : 30Mx0.32mmx 0.5µm Signal #2 Info : 30M x 0.32mm x 0.25µm



QEdit

(31) AR-1260-1 (L7)	R.T.	Response	Conc
	7.42	41586284	146.25
	7.68	82543744	235.26
	8.04	54358348	198.61
	8.27	51884010	159.94
	8.61	76790289	113.22

(31) AR-1260-1 #2 (L7)	R.T.	Response	Conc
	6.39	52984454	131.48
	6.57	101560190	206.73
	6.73	41062159	87.24
	7.20	51217017	127.31
	7.44	120861904	120.94

(+) = Expected Retention Time

Data Path : Z:\pestpcbsrv\HPCHEM1\ECD_R\Data\PR042021\
 Data File : PR050011.D
 Signal(s) : Signal #1: ECD1A.ch Signal #2: ECD2B.ch
 Acq On : 20 Apr 2021 17:12
 Operator : DD\AJ
 Sample : M2083-02
 Misc :
 ALS Vial : 25 Sample Multiplier: 1

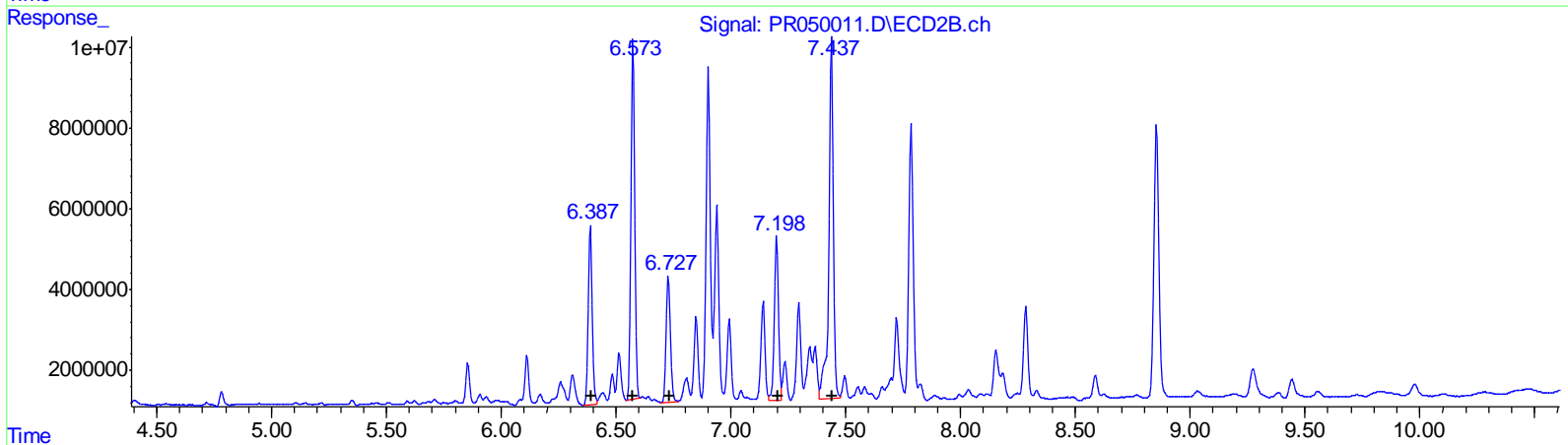
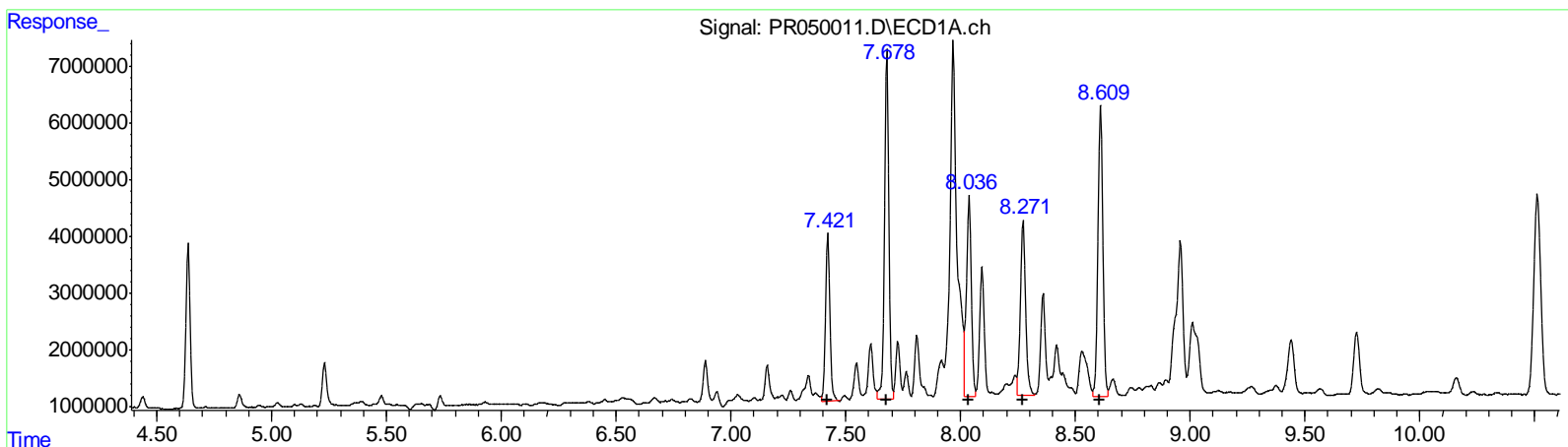
Instrument :
 ECD_R
 ClientSampled :
 A4322

Manual Integrations
 APPROVED

Ankita
 4/22/2021 11:54:47 AM

Integration File signal 1: autoint1.e
 Integration File signal 2: autoint2.e
 Quant Time: Apr 21 03:00:20 2021
 Quant Method : Z:\pestpcbsrv\HPCHEM1\ECD_R\Method\PR040621CLP.M
 Quant Title : GC EXTRACTABLES
 QLast Update : Wed Apr 07 06:22:57 2021
 Response via : Initial Calibration
 Integrator: ChemStation

Volume Inj. : 1 µl
 Signal #1 Phase : ZB MR1 Signal #2 Phase: ZB MR2
 Signal #1 Info : 30Mx0.32mmx 0.5µm Signal #2 Info : 30M x 0.32mm x 0.25µm



QEdit

(31) AR-1260-1 #2 (L7)	R.T.	Response	Conc
	7.42	39165545	137.74
	7.68	80345555	228.99
	8.04	52555241	192.02
	8.27	49431020	152.38
	8.61	76790289	113.22

(31) AR-1260-1 #2 (L7)	R.T.	Response	Conc
	6.39	52984454	131.48
	6.57	101560190	206.73
	6.73	41062159	87.24
	7.20	51217017	127.31
	7.44	120861904	120.94

(+) = Expected Retention Time

Data Path : Z:\pestpcbsrv\HPCHEM1\ECD_R\Data\PR042021\
 Data File : PR050011.D
 Signal(s) : Signal #1: ECD1A.ch Signal #2: ECD2B.ch
 Acq On : 20 Apr 2021 17:12
 Operator : DD\AJ
 Sample : M2083-02
 Misc :
 ALS Vial : 25 Sample Multiplier: 1

Instrument :
 ECD_R
 ClientSampleID :
 A4322

Manual Integrations
 APPROVED

Ankita
 4/22/2021 11:54:47 AM

Integration File signal 1: autoint1.e
 Integration File signal 2: autoint2.e
 Quant Time: Apr 21 03:00:20 2021
 Quant Method : Z:\pestpcbsrv\HPCHEM1\ECD_R\Method\PR040621CLP.M
 Quant Title : GC EXTRACTABLES
 QLast Update : Wed Apr 07 06:22:57 2021
 Response via : Initial Calibration
 Integrator: ChemStation

Volume Inj. : 1 µl
 Signal #1 Phase : ZB MR1 Signal #2 Phase: ZB MR2
 Signal #1 Info : 30Mx0.32mmx 0.5µm Signal #2 Info : 30M x 0.32mm x 0.25µm

Compound	RT#1	RT#2	Resp#1	Resp#2	ng/ml	ng/ml

System Monitoring Compounds						
1) SA Tetrachlo...	4.637	3.821	36305474	58967849	8.161	7.990
2) SA Decachlor...	10.511	8.853	74512100	100.6E6	11.290	12.034
Target Compounds						
31) L7 AR-1260-1	7.421	6.387	39165545	52984454	137.737m	131.479
32) L7 AR-1260-2	7.678	6.573	80345555	101.6E6	228.994m	206.727
33) L7 AR-1260-3	8.036	6.727	52555241	41062159	192.017m	87.243 #
34) L7 AR-1260-4	8.271	7.199	49431020	51217017	152.383m	127.314
35) L7 AR-1260-5	8.610	7.437	76790289	120.9E6	113.217	120.939

AJ
 04/26/21

(f)=RT Delta > 1/2 Window (#)=Amounts differ by > 25% (m)=manual int.