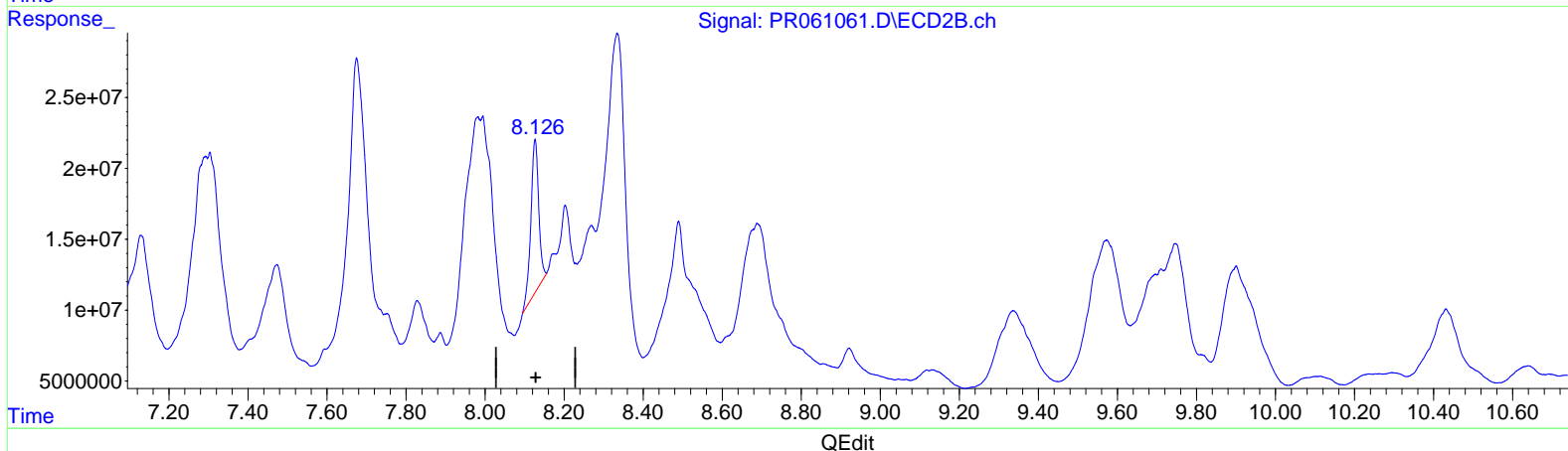
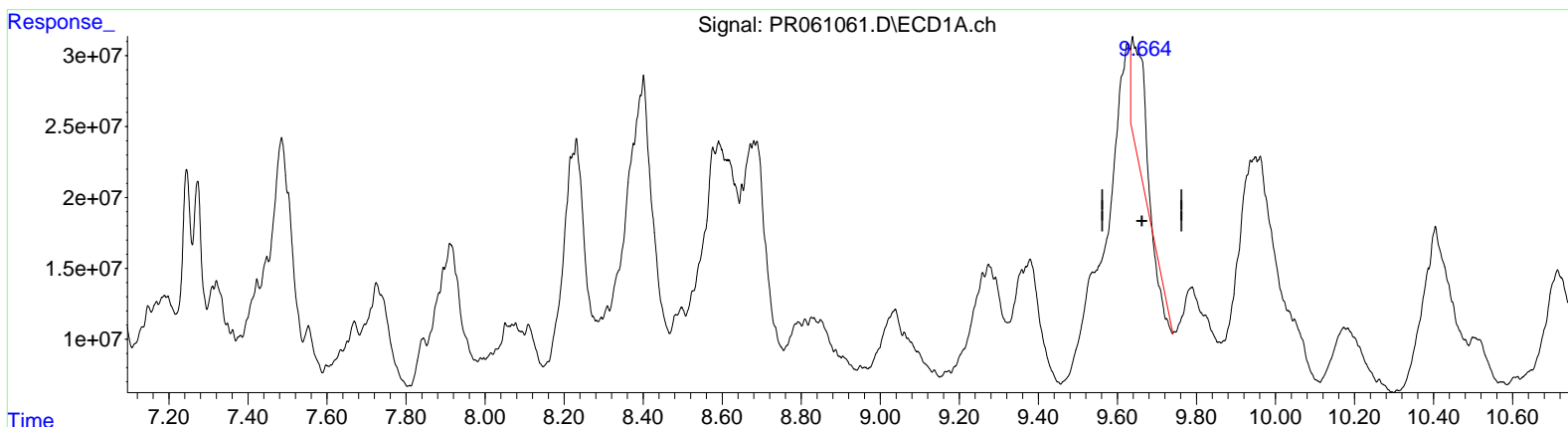


Quantitation Report (Qedit)

Data Path : Z:\pestpcbsrv\HPCHEM1\ECD_R\Data\PR042523\
 Data File : PR061061.D
 Signal(s) : Signal #1: ECD1A.ch Signal #2: ECD2B.ch
 Acq On : 25 Apr 2023 19:30
 Operator : AJ\MA
 Sample : 02447-09
 Misc :
 ALS Vial : 36 Sample Multiplier: 1

Integration File signal 1: autoint1.e
 Integration File signal 2: autoint2.e
 Quant Time: Apr 25 22:27:23 2023
 Quant Method : Z:\pestpcbsrv\HPCHEM1\ECD_R\Method\PR040323CLP.M
 Quant Title : GC EXTRACTABLES
 QLast Update : Tue Apr 04 04:06:01 2023
 Response via : Initial Calibration
 Integrator: ChemStation

Volume Inj. : 1 µl
 Signal #1 Phase : ZB MR1 Signal #2 Phase: ZB MR2
 Signal #1 Info : 30Mx0.32mmx 0.5µm Signal #2 Info : 30M x 0.32mm x 0.25µm



(2) Decachlorobiphenyl (SA)

9.638min 53.412 ng/ml

response 154412566

(2) Decachlorobiphenyl #2 (SA)

8.127min 33.749 ng/ml

response 148758784

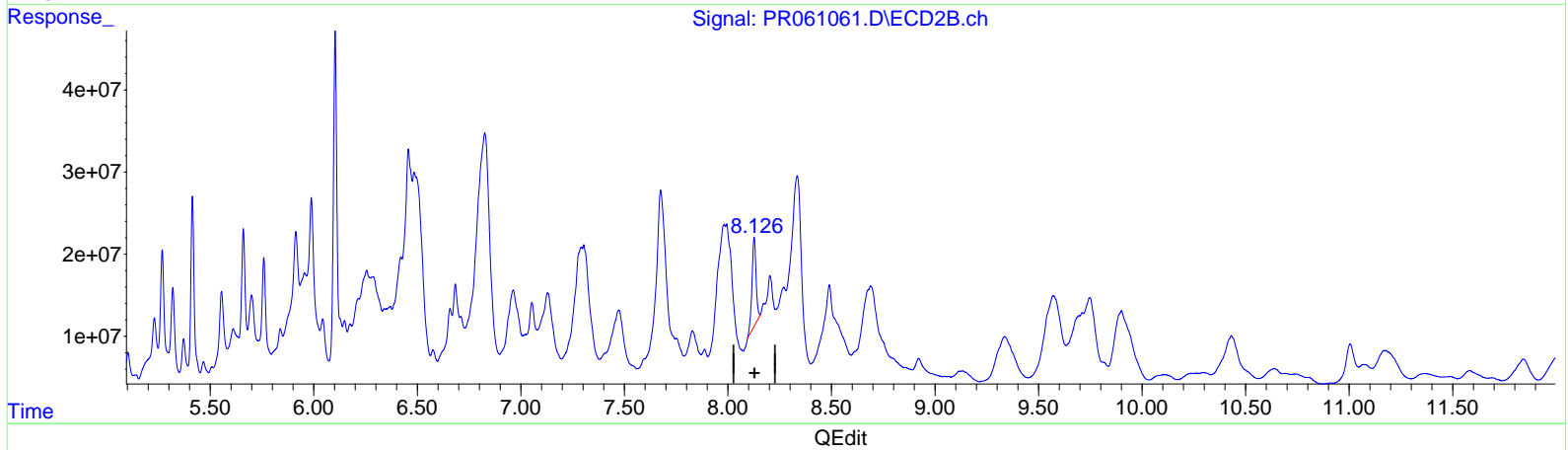
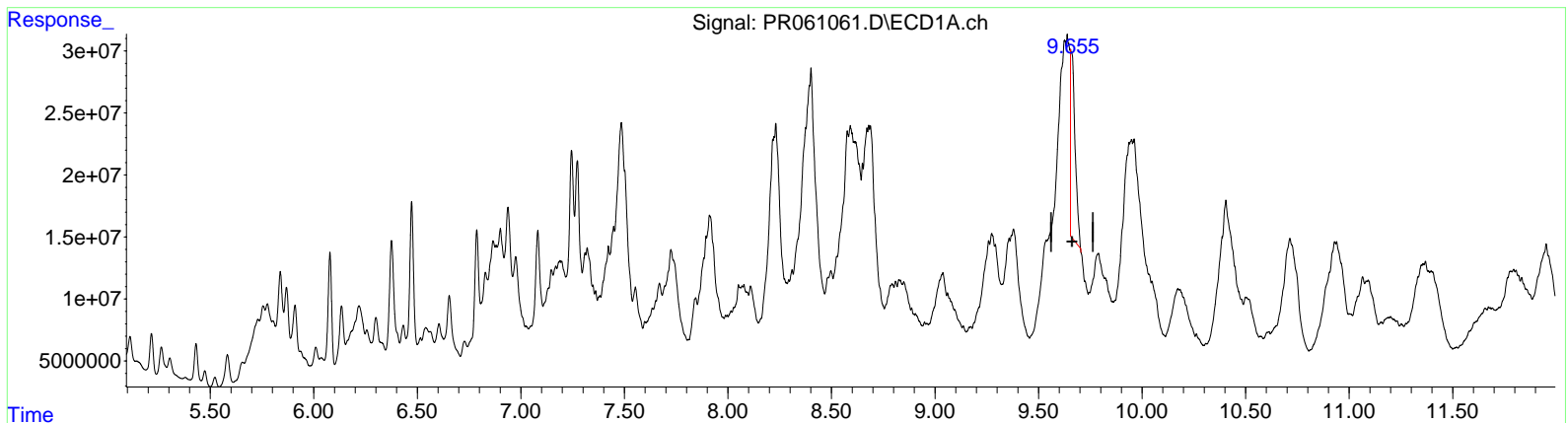
(+) = Expected Retention Time

Quantitation Report (Qedit)

Data Path : Z:\pestpcbsrv\HPCHEM1\ECD_R\Data\PR042523\
 Data File : PR061061.D
 Signal(s) : Signal #1: ECD1A.ch Signal #2: ECD2B.ch
 Acq On : 25 Apr 2023 19:30
 Operator : AJ\MA
 Sample : 02447-09
 Misc :
 ALS Vial : 36 Sample Multiplier: 1

Integration File signal 1: autoint1.e
 Integration File signal 2: autoint2.e
 Quant Time: Apr 25 22:27:23 2023
 Quant Method : Z:\pestpcbsrv\HPCHEM1\ECD_R\Method\PR040323CLP.M
 Quant Title : GC EXTRACTABLES
 QLast Update : Tue Apr 04 04:06:01 2023
 Response via : Initial Calibration
 Integrator: ChemStation

Volume Inj. : 1 µl
 Signal #1 Phase : ZB MR1 Signal #2 Phase: ZB MR2
 Signal #1 Info : 30Mx0.32mmx 0.5µm Signal #2 Info : 30M x 0.32mm x 0.25µm



(2) Decachlorobiphenyl (SA)

9.655min 75.975 ng/ml m
 response 219639374

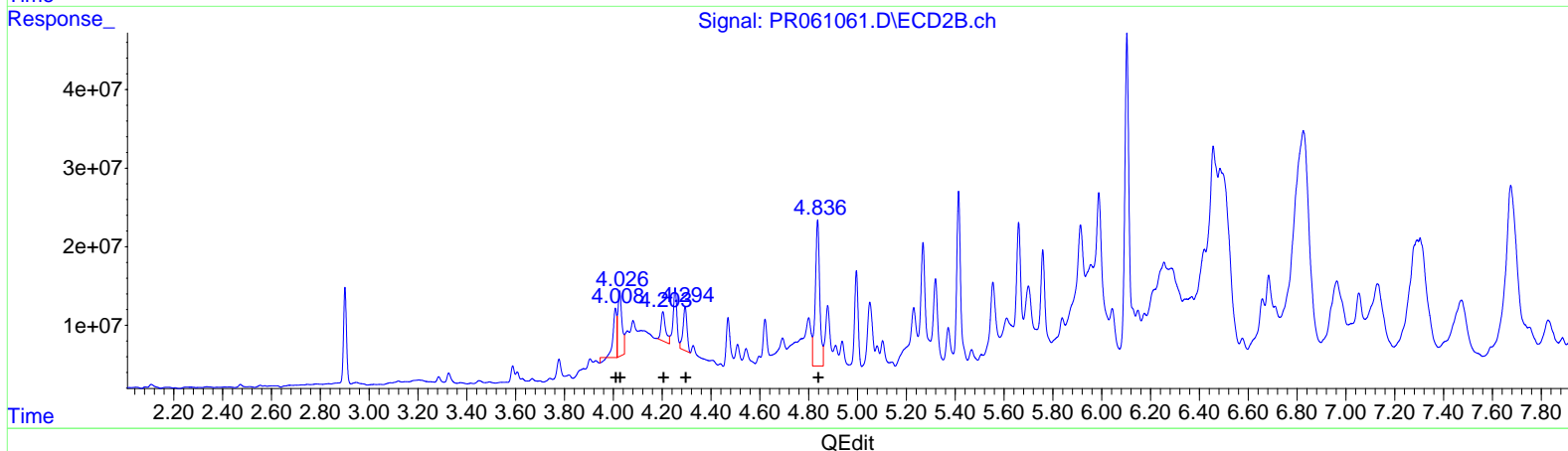
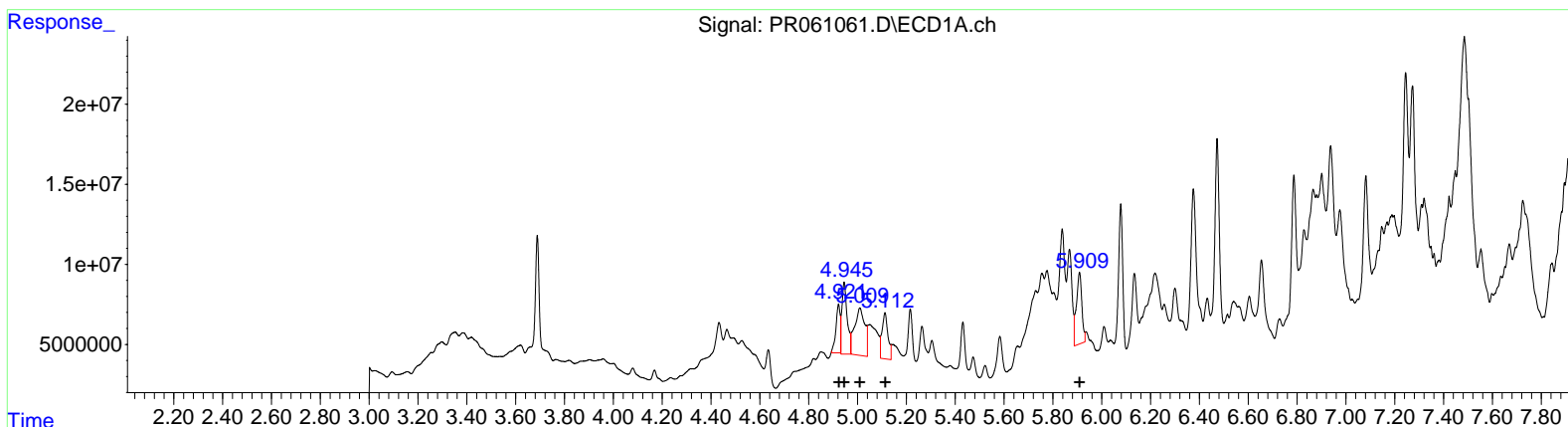
(2) Decachlorobiphenyl #2 (SA)

8.127min 33.749 ng/ml
 response 148758784

Data Path : Z:\pestpcbsrv\HPCHEM1\ECD_R\Data\PR042523\
 Data File : PR061061.D
 Signal(s) : Signal #1: ECD1A.ch Signal #2: ECD2B.ch
 Acq On : 25 Apr 2023 19:30
 Operator : AJ\MA
 Sample : 02447-09
 Misc :
 ALS Vial : 36 Sample Multiplier: 1

Integration File signal 1: autoint1.e
 Integration File signal 2: autoint2.e
 Quant Time: Apr 25 22:27:23 2023
 Quant Method : Z:\pestpcbsrv\HPCHEM1\ECD_R\Method\PR040323CLP.M
 Quant Title : GC EXTRACTABLES
 QLast Update : Tue Apr 04 04:06:01 2023
 Response via : Initial Calibration
 Integrator: ChemStation

Volume Inj. : 1 µl
 Signal #1 Phase : ZB MR1 Signal #2 Phase: ZB MR2
 Signal #1 Info : 30Mx0.32mmx 0.5µm Signal #2 Info : 30M x 0.32mm x 0.25µm



(16) AR-1242-1 (L4)

R.T.	Response	Conc
4.92	35749773	388.72
4.95	67455465	523.88
5.01	86481335	1048.40
5.11	48378756	724.43
5.91	69404221	1004.46

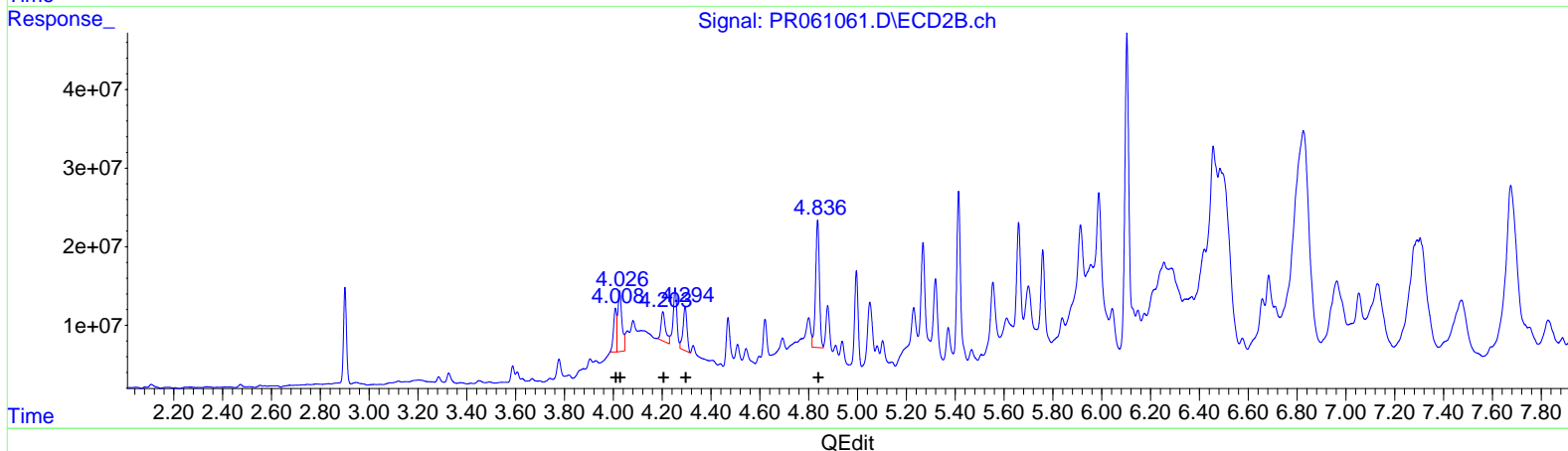
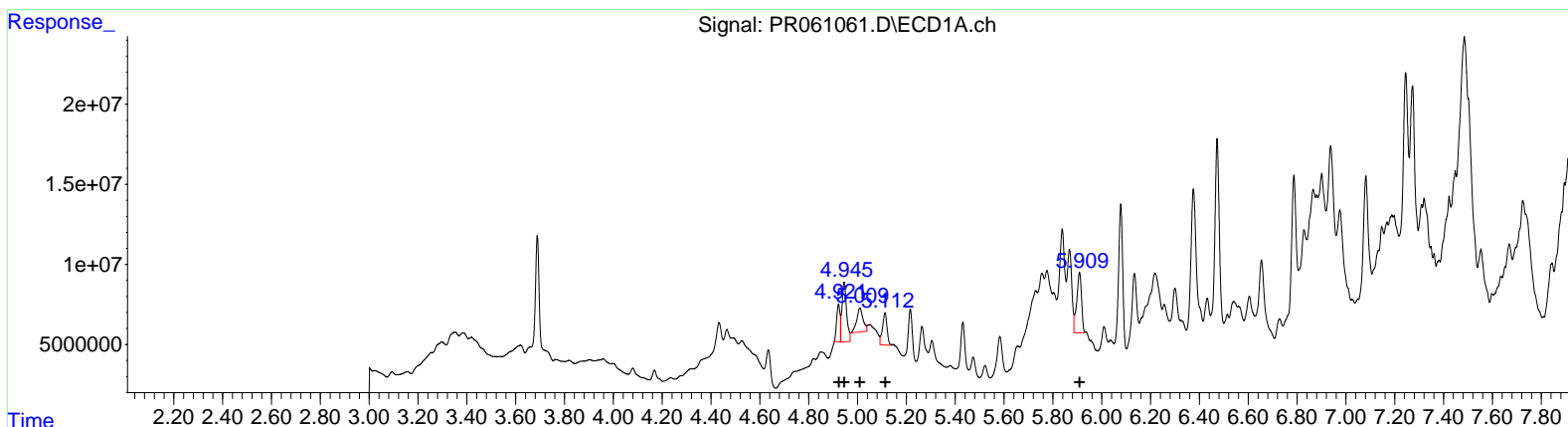
(16) AR-1242-1 #2 (L4)

R.T.	Response	Conc
4.01	80038842	641.91
4.03	99003308	551.29
4.20	48168270	519.86
4.29	63865296	727.07
4.84	237181546	2042.89

Data Path : Z:\pestpcbsrv\HPCHEM1\ECD_R\Data\PR042523\
 Data File : PR061061.D
 Signal(s) : Signal #1: ECD1A.ch Signal #2: ECD2B.ch
 Acq On : 25 Apr 2023 19:30
 Operator : AJ\MA
 Sample : 02447-09
 Misc :
 ALS Vial : 36 Sample Multiplier: 1

Integration File signal 1: autoint1.e
 Integration File signal 2: autoint2.e
 Quant Time: Apr 25 22:27:23 2023
 Quant Method : Z:\pestpcbsrv\HPCHEM1\ECD_R\Method\PR040323CLP.M
 Quant Title : GC EXTRACTABLES
 QLast Update : Tue Apr 04 04:06:01 2023
 Response via : Initial Calibration
 Integrator: ChemStation

Volume Inj. : 1 µl
 Signal #1 Phase : ZB MR1 Signal #2 Phase: ZB MR2
 Signal #1 Info : 30Mx0.32mmx 0.5µm Signal #2 Info : 30M x 0.32mm x 0.25µm



(16) AR-1242-1 #2 (L4)

R.T.	Response	Conc
4.92	22777005	247.66
4.94	47832016	371.48
5.01	27332511	331.35
5.11	25695938	384.77
5.91	51539740	745.91

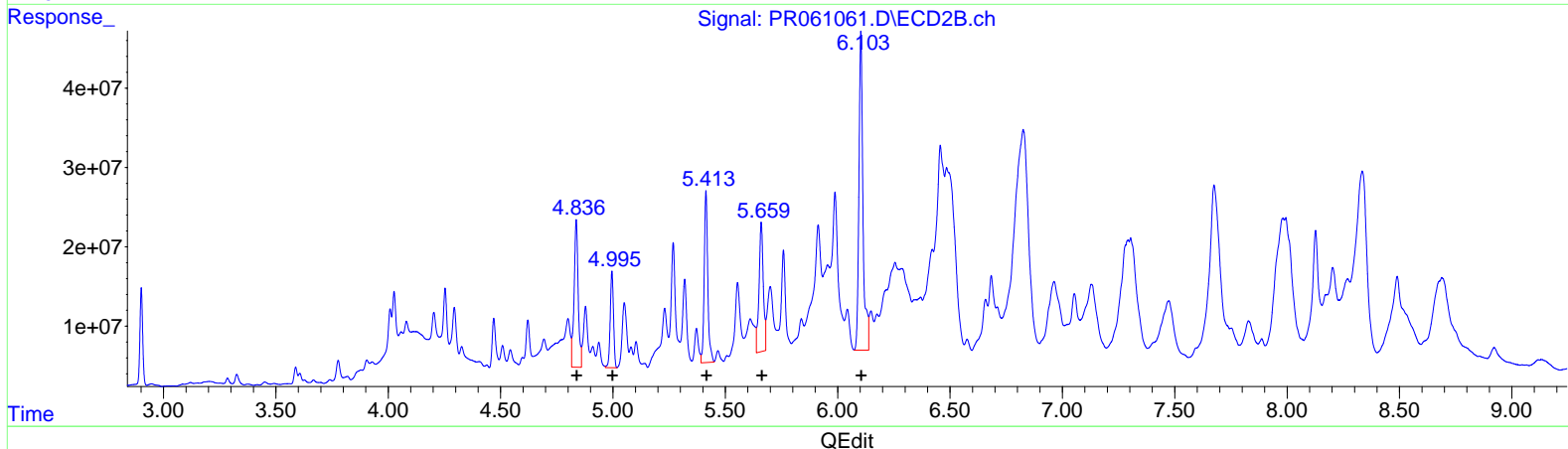
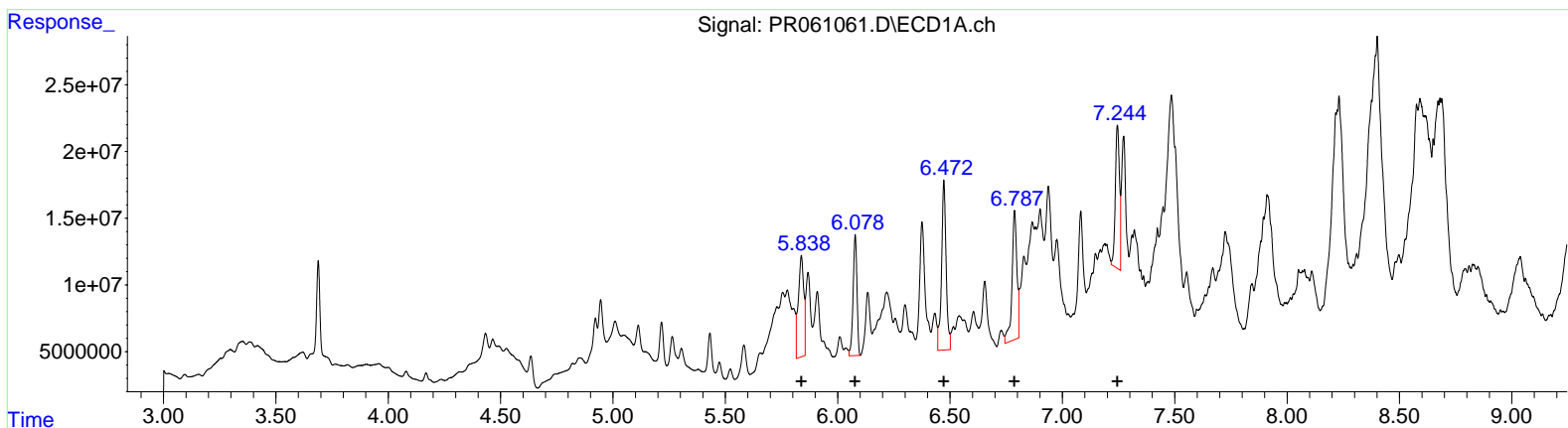
(16) AR-1242-1 #2 (L4)

R.T.	Response	Conc
4.01	48003994	384.99
4.03	89512427	498.44
4.20	48168270	519.86
4.29	63865296	727.07
4.84	176623576	1521.29

Data Path : Z:\pestpcbsrv\HPCHEM1\ECD_R\Data\PR042523\
 Data File : PR061061.D
 Signal(s) : Signal #1: ECD1A.ch Signal #2: ECD2B.ch
 Acq On : 25 Apr 2023 19:30
 Operator : AJ\MA
 Sample : 02447-09
 Misc :
 ALS Vial : 36 Sample Multiplier: 1

Integration File signal 1: autoint1.e
 Integration File signal 2: autoint2.e
 Quant Time: Apr 25 22:27:23 2023
 Quant Method : Z:\pestpcbsrv\HPCHEM1\ECD_R\Method\PR040323CLP.M
 Quant Title : GC EXTRACTABLES
 QLast Update : Tue Apr 04 04:06:01 2023
 Response via : Initial Calibration
 Integrator: ChemStation

Volume Inj. : 1 µl
 Signal #1 Phase : ZB MR1 Signal #2 Phase: ZB MR2
 Signal #1 Info : 30Mx0.32mmx 0.5µm Signal #2 Info : 30M x 0.32mm x 0.25µm



(26) AR-1254-1 (L6)

R.T.	Response	Conc
5.84	127792033	1081.17
6.08	107726645	568.21
6.47	179617270	886.76
6.79	146574677	962.40
7.24	138043795	844.20

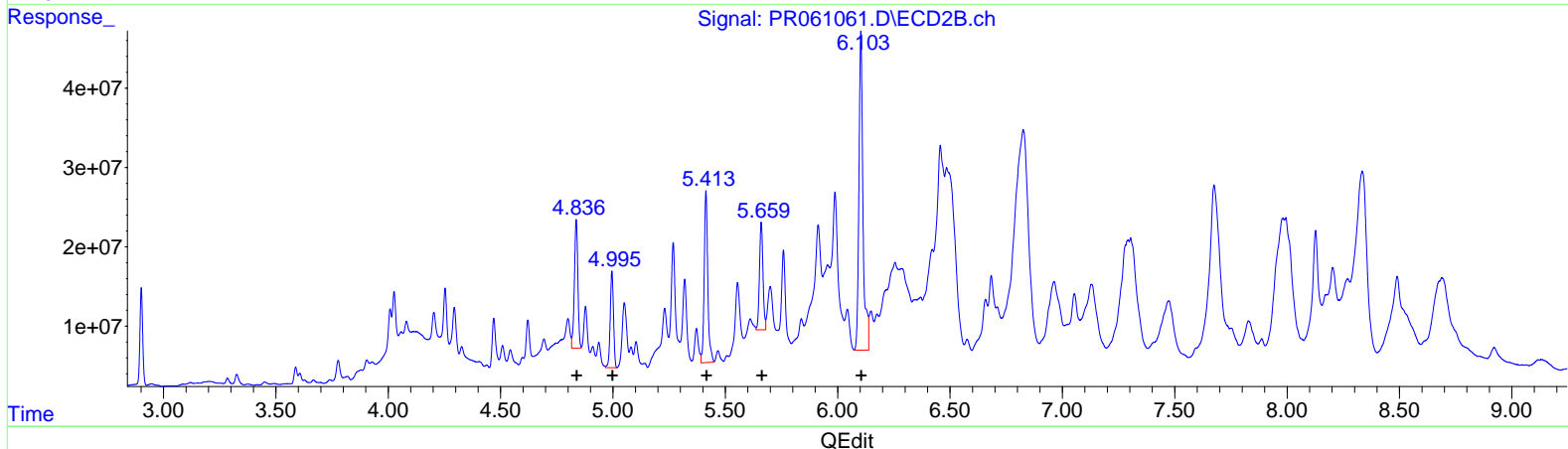
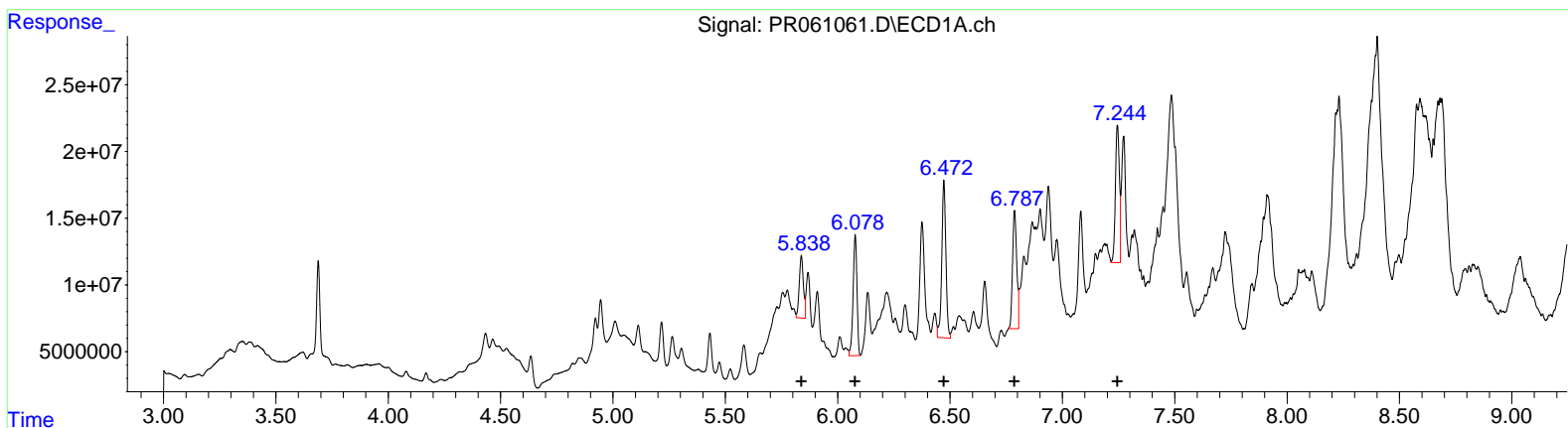
(26) AR-1254-1 #2 (L6)

R.T.	Response	Conc
4.84	237181546	938.86
5.00	122891038	560.18
5.41	239120601	655.18
5.66	215688483	939.75
6.10	507032823	1528.62

Data Path : Z:\pestpcbsrv\HPCHEM1\ECD_R\Data\PR042523\
 Data File : PR061061.D
 Signal(s) : Signal #1: ECD1A.ch Signal #2: ECD2B.ch
 Acq On : 25 Apr 2023 19:30
 Operator : AJ\MA
 Sample : 02447-09
 Misc :
 ALS Vial : 36 Sample Multiplier: 1

Integration File signal 1: autoint1.e
 Integration File signal 2: autoint2.e
 Quant Time: Apr 25 22:27:23 2023
 Quant Method : Z:\pestpcbsrv\HPCHEM1\ECD_R\Method\PR040323CLP.M
 Quant Title : GC EXTRACTABLES
 QLast Update : Tue Apr 04 04:06:01 2023
 Response via : Initial Calibration
 Integrator: ChemStation

Volume Inj. : 1 µl
 Signal #1 Phase : ZB MR1 Signal #2 Phase: ZB MR2
 Signal #1 Info : 30Mx0.32mmx 0.5µm Signal #2 Info : 30M x 0.32mm x 0.25µm



(26) AR-1254-1 #2 (L6)		
R.T.	Response	Conc
5.84	59928207	507.02
6.08	107726645	568.21
6.47	150570374	743.36
6.79	114883407	754.32
7.24	126541920	773.86
(26) AR-1254-1 #2 (L6)		
R.T.	Response	Conc
4.84	172849083	684.20
5.00	122891038	560.18
5.41	239120601	655.18
5.66	146942618	640.23
6.10	507032823	1528.62