

Data Path : Z:\pestpcbsrv\HPCHEM1\ECD\_R\Data\PR050924\  
 Data File : PR066588.D  
 Signal(s) : Signal #1: ECD1A.ch Signal #2: ECD2B.ch  
 Acq On : 09 May 2024 13:51  
 Operator : AJ\MA  
 Sample : PB160790BL  
 Misc :  
 ALS Vial : 15 Sample Multiplier: 1

**Instrument :**  
 ECD\_R  
**ClientSampleId :**  
 PB160790BL

Integration File signal 1: autoint1.e  
 Integration File signal 2: autoint2.e  
 Quant Time: May 10 01:07:51 2024  
 Quant Method : Z:\pestpcbsrv\HPCHEM1\ECD\_R\Method\PR042424.M  
 Quant Title : GC EXTRACTABLES  
 QLast Update : Fri Apr 26 07:26:35 2024  
 Response via : Initial Calibration  
 Integrator: ChemStation

Volume Inj. : 2 µl  
 Signal #1 Phase : ZB-MR1 Signal #2 Phase: ZB-MR2  
 Signal #1 Info : 30Mx0.32mmx 0.50µ Signal #2 Info : 30M x 0.32mm x 0.25µm

Compound	RT#1	RT#2	Resp#1	Resp#2	ng/ml	ng/ml
-----						
System Monitoring Compounds						
1) SA Tetrachlo...	3.653	2.894	103.8E6	81730418	19.810	18.286
2) SA Decachlor...	9.537	8.126	45016787	84779099	19.223	18.063

Target Compounds

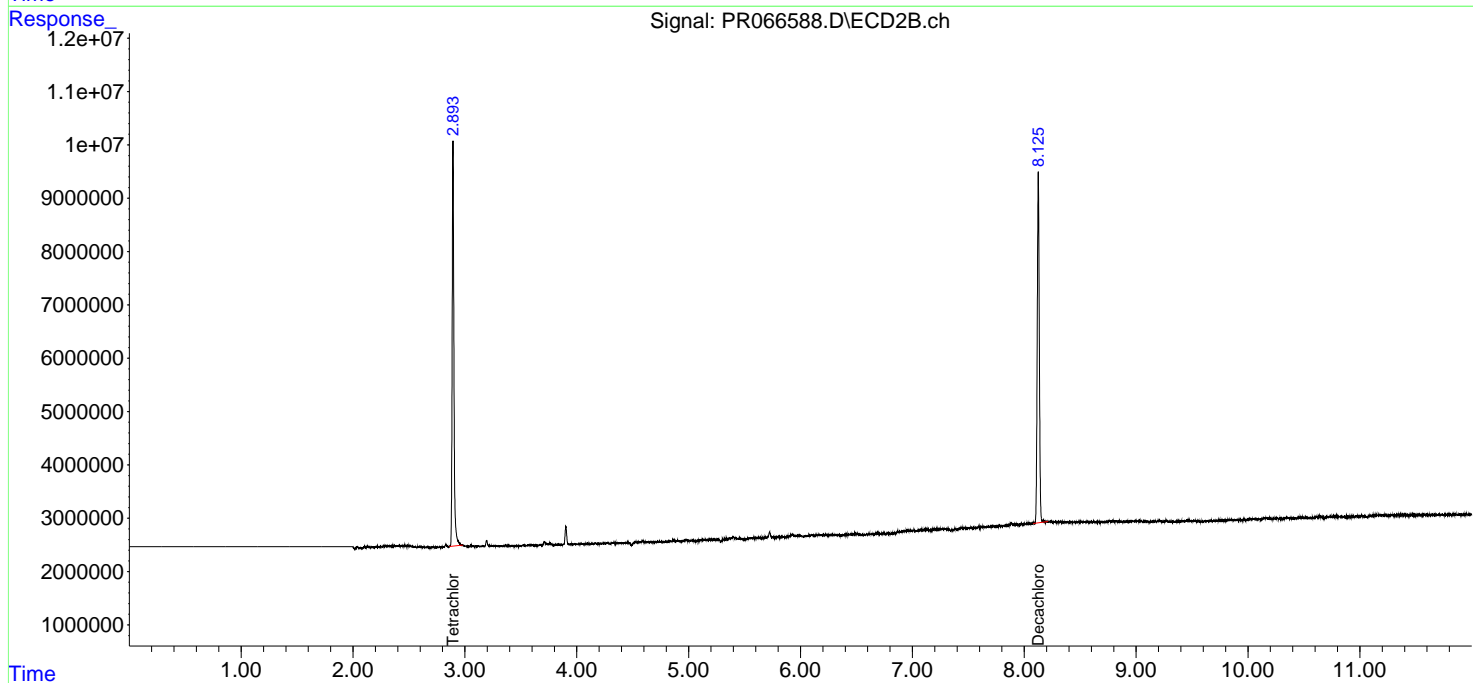
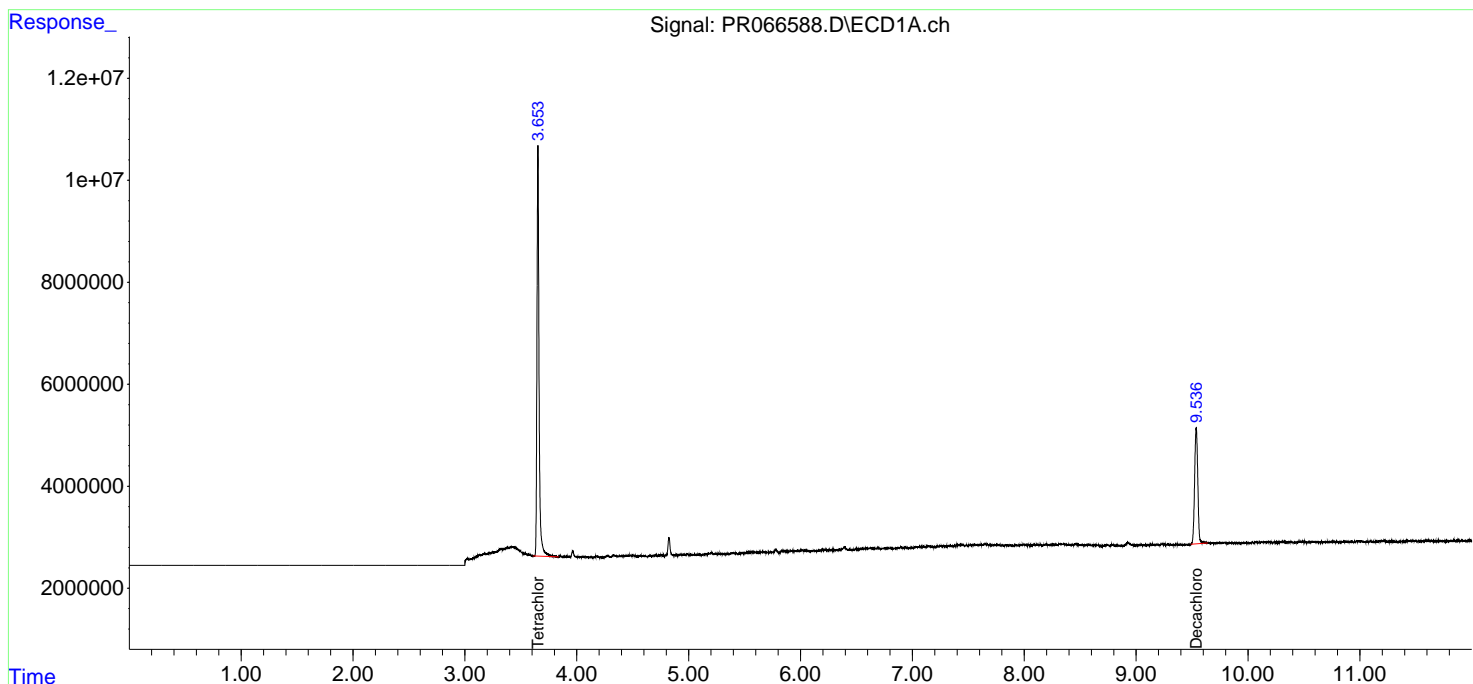
-----  
 (f)=RT Delta > 1/2 Window (#)=Amounts differ by > 25% (m)=manual int.

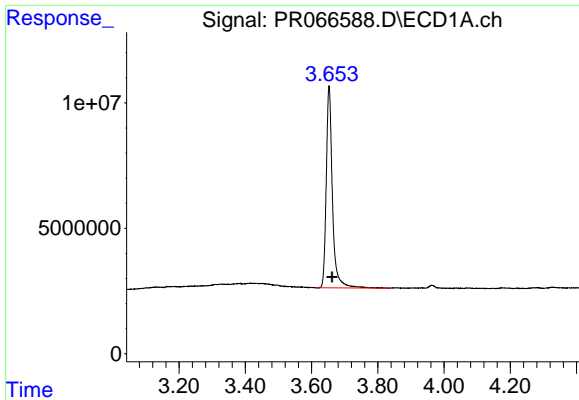
Data Path : Z:\pestpcbsrv\HPCHEM1\ECD\_R\Data\PR050924\  
 Data File : PR066588.D  
 Signal(s) : Signal #1: ECD1A.ch Signal #2: ECD2B.ch  
 Acq On : 09 May 2024 13:51  
 Operator : AJ\MA  
 Sample : PB160790BL  
 Misc :  
 ALS Vial : 15 Sample Multiplier: 1

Instrument :  
 ECD\_R  
 ClientSampleId :  
 PB160790BL

Integration File signal 1: autoint1.e  
 Integration File signal 2: autoint2.e  
 Quant Time: May 10 01:07:51 2024  
 Quant Method : Z:\pestpcbsrv\HPCHEM1\ECD\_R\Method\PR042424.M  
 Quant Title : GC EXTRACTABLES  
 QLast Update : Fri Apr 26 07:26:35 2024  
 Response via : Initial Calibration  
 Integrator: ChemStation

Volume Inj. : 2 µl  
 Signal #1 Phase : ZB-MR1 Signal #2 Phase: ZB-MR2  
 Signal #1 Info : 30Mx0.32mmx 0.50µ Signal #2 Info : 30M x 0.32mm x 0.25µm

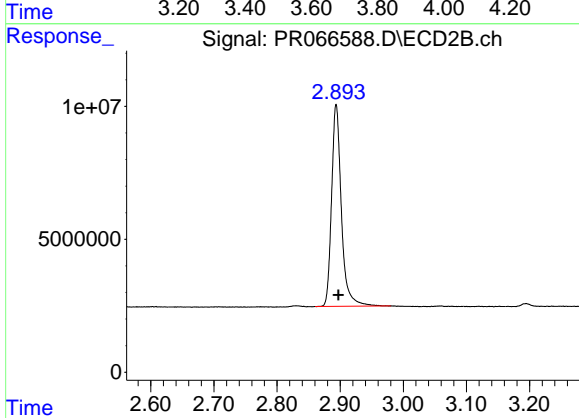




#1 Tetrachloro-m-xylene

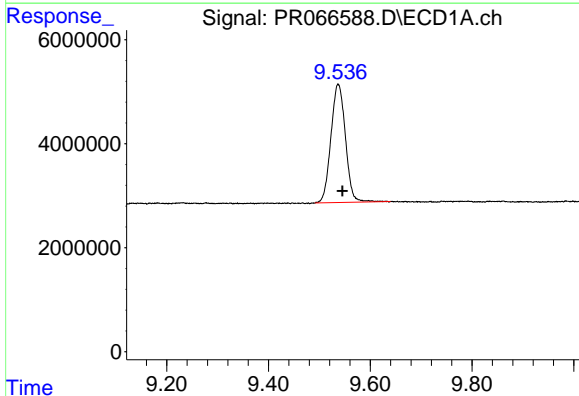
R.T.: 3.653 min  
 Delta R.T.: -0.009 min  
 Response: 103832656  
 Conc: 19.81 ng/ml

Instrument :  
 ECD\_R  
 ClientSampleId :  
 PB160790BL



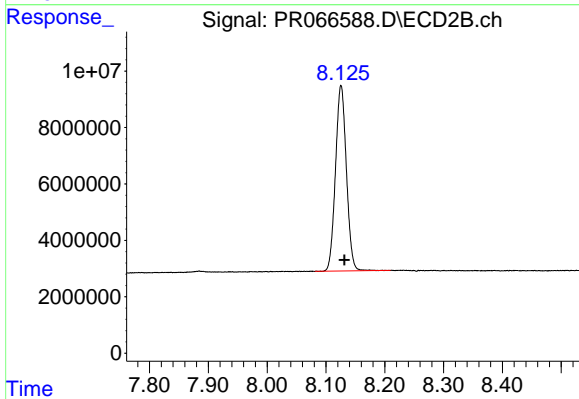
#1 Tetrachloro-m-xylene

R.T.: 2.894 min  
 Delta R.T.: -0.003 min  
 Response: 81730418  
 Conc: 18.29 ng/ml



#2 Decachlorobiphenyl

R.T.: 9.537 min  
 Delta R.T.: -0.008 min  
 Response: 45016787  
 Conc: 19.22 ng/ml



#2 Decachlorobiphenyl

R.T.: 8.126 min  
 Delta R.T.: -0.006 min  
 Response: 84779099  
 Conc: 18.06 ng/ml