

Data Path : Z:\pestpcbsrv\HPCHEM1\ECD\_R\Data\PR050924\  
 Data File : PR066602.D  
 Signal(s) : Signal #1: ECD1A.ch Signal #2: ECD2B.ch  
 Acq On : 09 May 2024 17:17  
 Operator : AJ\MA  
 Sample : P2403-01  
 Misc : AR1242 LOD 40 PPB  
 ALS Vial : 27 Sample Multiplier: 1

**Instrument :**  
 ECD\_R  
**ClientSampleId :**  
 LOD-MDL-SOIL-01-QT2-2024

Integration File signal 1: autoint1.e  
 Integration File signal 2: autoint2.e  
 Quant Time: May 10 01:13:45 2024  
 Quant Method : Z:\pestpcbsrv\HPCHEM1\ECD\_R\Method\PR042424.M  
 Quant Title : GC EXTRACTABLES  
 QLast Update : Fri Apr 26 07:26:35 2024  
 Response via : Initial Calibration  
 Integrator: ChemStation

Volume Inj. : 2 µl  
 Signal #1 Phase : ZB-MR2 Signal #2 Phase: ZB-MR2  
 Signal #1 Info : 30Mx0.32mmx 0.50µ Signal #2 Info : 30M x 0.32mm x 0.25µm

Compound	RT#1	RT#2	Resp#1	Resp#2	ng/ml	ng/ml
-----						
System Monitoring Compounds						
1) SA Tetrachlo...	3.653	2.894	97916498	79810229	18.681	17.856
2) SA Decachlor...	9.534	8.124	42165144	82189259	18.005	17.511
Target Compounds						
16) L4 AR-1242-1	4.873	4.004	3804059	3167791	31.961	25.306
17) L4 AR-1242-2	4.895	4.022	5385046	4926216	29.962	27.794
18) L4 AR-1242-3	4.958	4.199	4007278	2129042	33.639	22.157 #
19) L4 AR-1242-4	5.060	4.291	2679273	2563395	28.304	26.851
20) L4 AR-1242-5	5.845	4.835	2425121	2933593	26.969	23.884
-----						

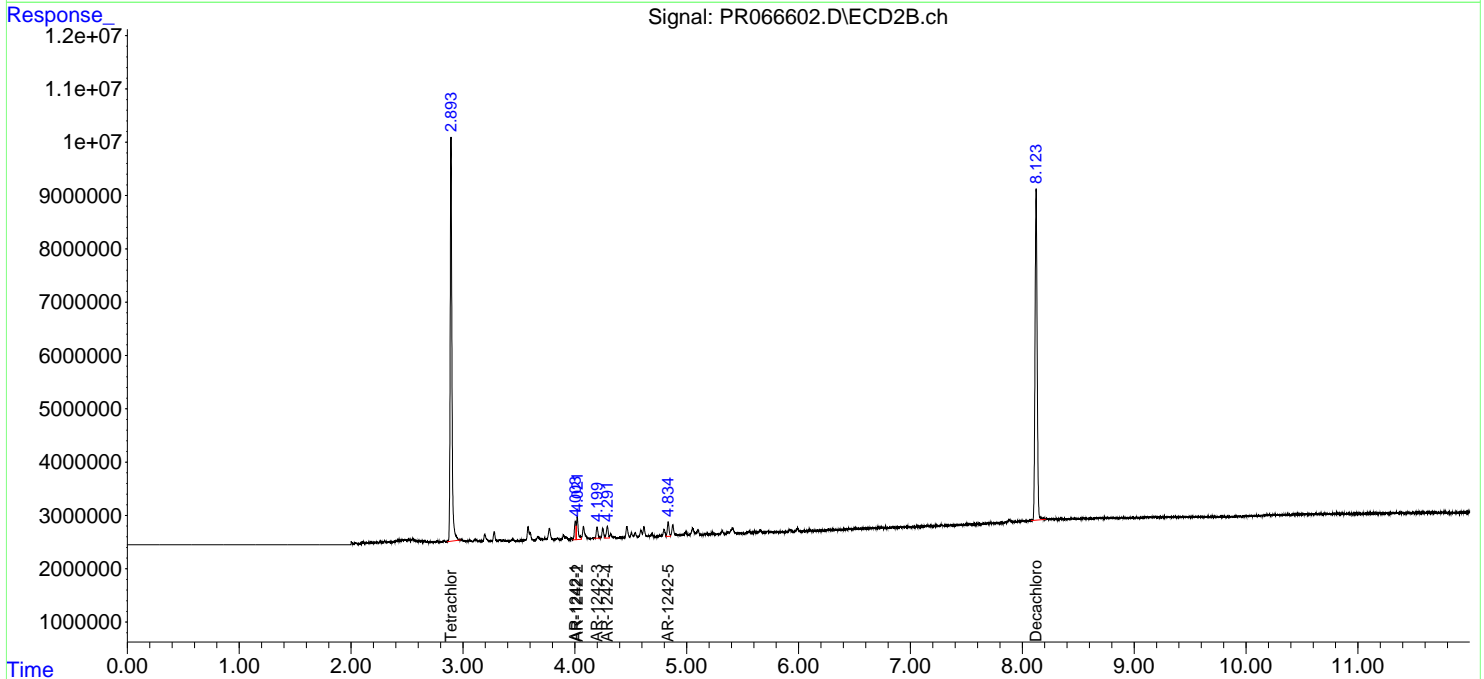
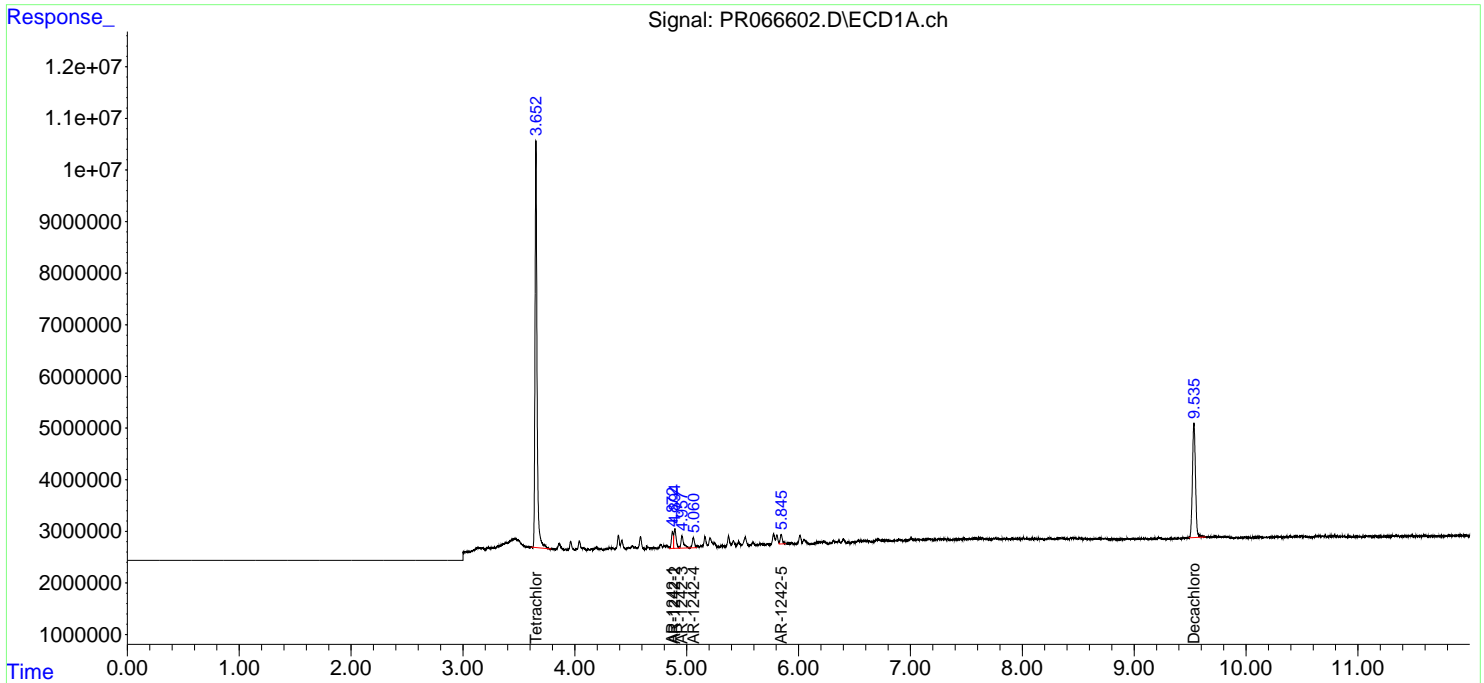
(f)=RT Delta > 1/2 Window (#)=Amounts differ by > 25% (m)=manual int.

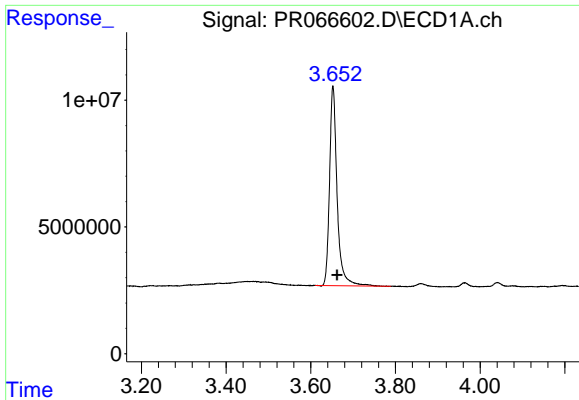
Data Path : Z:\pestpcbsrv\HPCHEM1\ECD\_R\Data\PR050924\  
 Data File : PR066602.D  
 Signal(s) : Signal #1: ECD1A.ch Signal #2: ECD2B.ch  
 Acq On : 09 May 2024 17:17  
 Operator : AJ\MA  
 Sample : P2403-01  
 Misc : AR1242 LOD 40 PPB  
 ALS Vial : 27 Sample Multiplier: 1

**Instrument :**  
 ECD\_R  
**ClientSampleId :**  
 LOD-MDL-SOIL-01-QT2-2024

Integration File signal 1: autoint1.e  
 Integration File signal 2: autoint2.e  
 Quant Time: May 10 01:13:45 2024  
 Quant Method : Z:\pestpcbsrv\HPCHEM1\ECD\_R\Method\PR042424.M  
 Quant Title : GC EXTRACTABLES  
 QLast Update : Fri Apr 26 07:26:35 2024  
 Response via : Initial Calibration  
 Integrator: ChemStation

Volume Inj. : 2 µl  
 Signal #1 Phase : ZB-MR1 Signal #2 Phase: ZB-MR2  
 Signal #1 Info : 30Mx0.32mmx 0.50µ Signal #2 Info : 30M x 0.32mm x 0.25µm

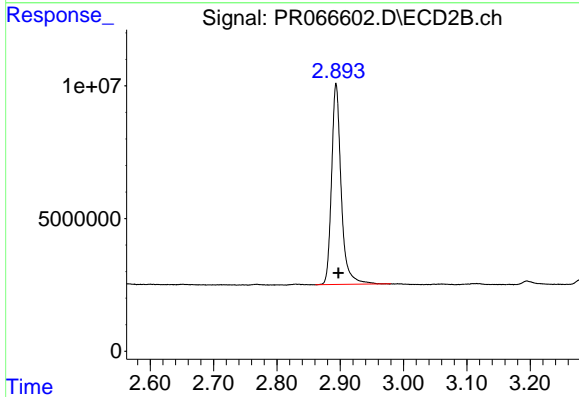




#1 Tetrachloro-m-xylene

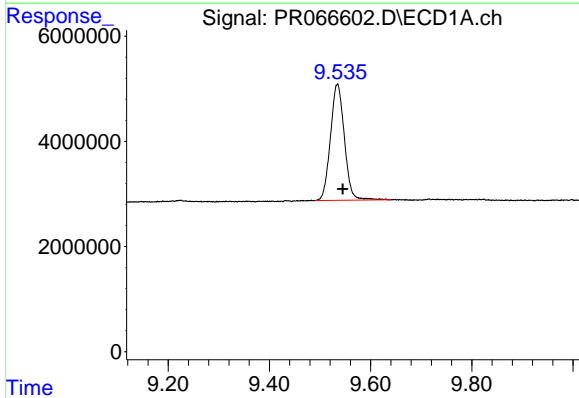
R.T.: 3.653 min  
 Delta R.T.: -0.009 min  
 Response: 97916498  
 Conc: 18.68 ng/ml

Instrument : ECD\_R  
 ClientSampleId : LOD-MDL-SOIL-01-QT2-2024



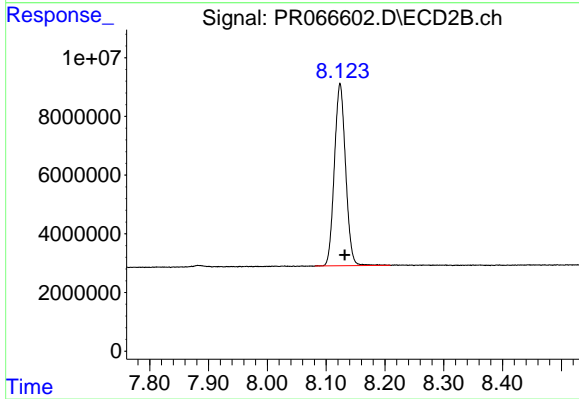
#1 Tetrachloro-m-xylene

R.T.: 2.894 min  
 Delta R.T.: -0.004 min  
 Response: 79810229  
 Conc: 17.86 ng/ml



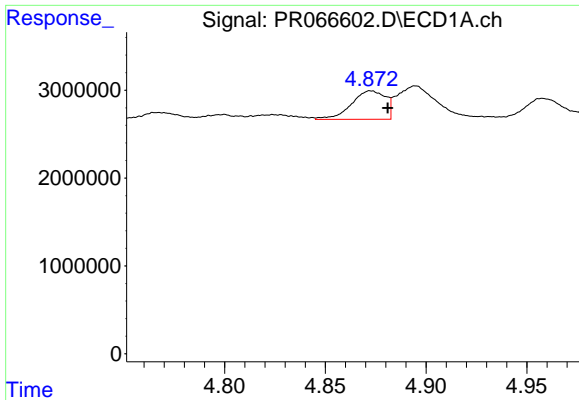
#2 Decachlorobiphenyl

R.T.: 9.534 min  
 Delta R.T.: -0.011 min  
 Response: 42165144  
 Conc: 18.01 ng/ml



#2 Decachlorobiphenyl

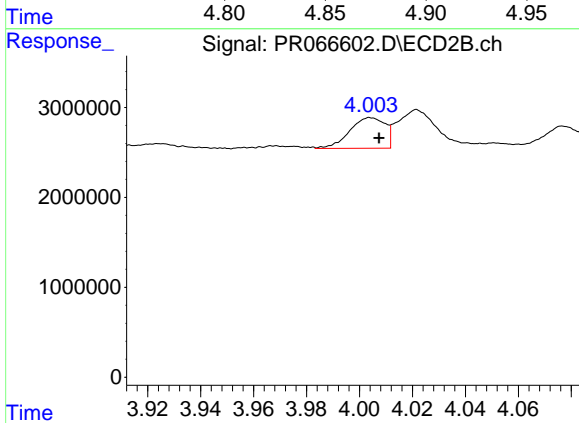
R.T.: 8.124 min  
 Delta R.T.: -0.008 min  
 Response: 82189259  
 Conc: 17.51 ng/ml



#16 AR-1242-1

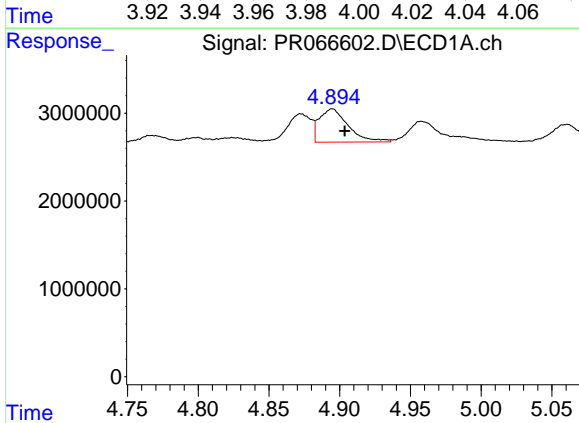
R.T.: 4.873 min  
 Delta R.T.: -0.008 min  
 Response: 3804059  
 Conc: 31.96 ng/ml

Instrument : ECD\_R  
 ClientSampleId : LOD-MDL-SOIL-01-QT2-2024



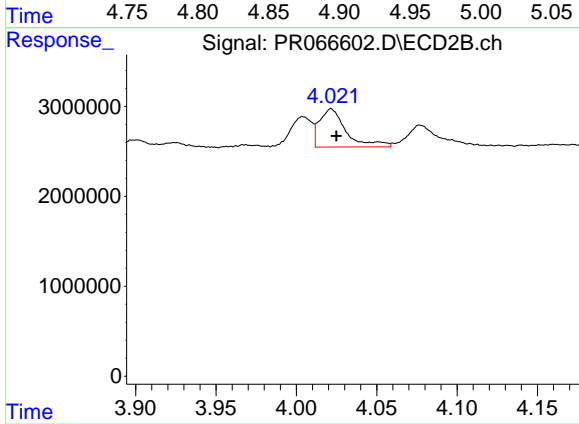
#16 AR-1242-1

R.T.: 4.004 min  
 Delta R.T.: -0.003 min  
 Response: 3167791  
 Conc: 25.31 ng/ml



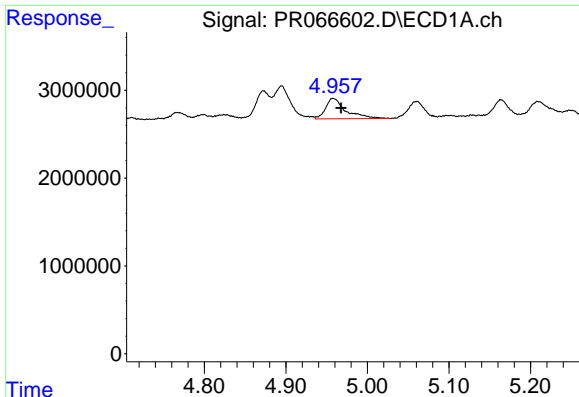
#17 AR-1242-2

R.T.: 4.895 min  
 Delta R.T.: -0.009 min  
 Response: 5385046  
 Conc: 29.96 ng/ml



#17 AR-1242-2

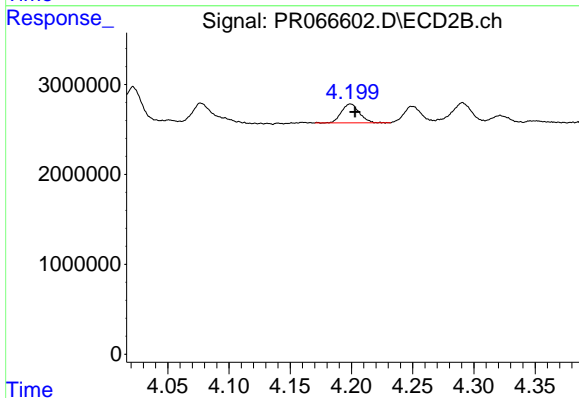
R.T.: 4.022 min  
 Delta R.T.: -0.003 min  
 Response: 4926216  
 Conc: 27.79 ng/ml



#18 AR-1242-3

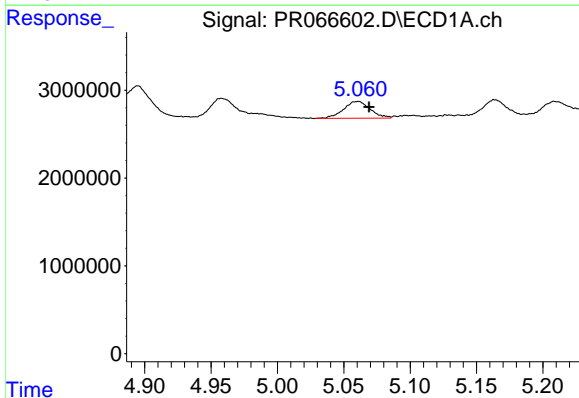
R.T.: 4.958 min  
 Delta R.T.: -0.010 min  
 Response: 4007278  
 Conc: 33.64 ng/ml

Instrument :  
 ECD\_R  
 ClientSampleId :  
 LOD-MDL-SOIL-01-QT2-2024



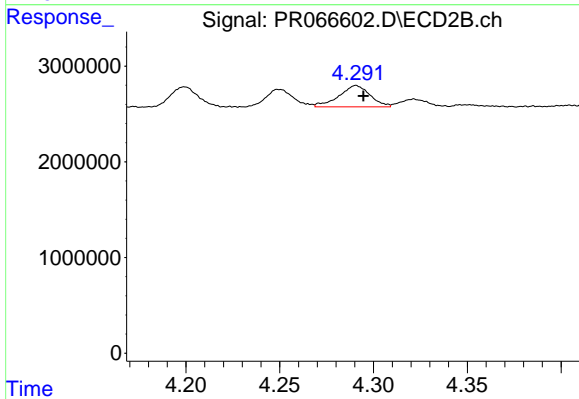
#18 AR-1242-3

R.T.: 4.199 min  
 Delta R.T.: -0.004 min  
 Response: 2129042  
 Conc: 22.16 ng/ml



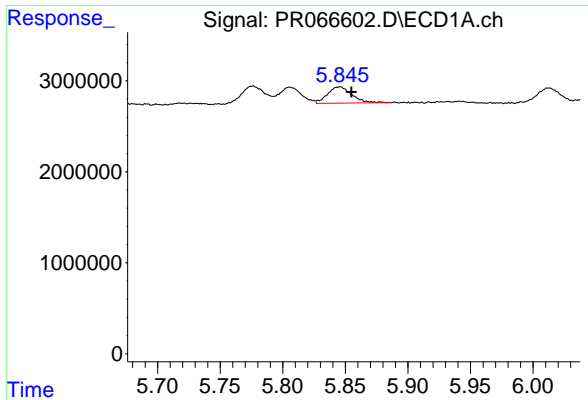
#19 AR-1242-4

R.T.: 5.060 min  
 Delta R.T.: -0.009 min  
 Response: 2679273  
 Conc: 28.30 ng/ml



#19 AR-1242-4

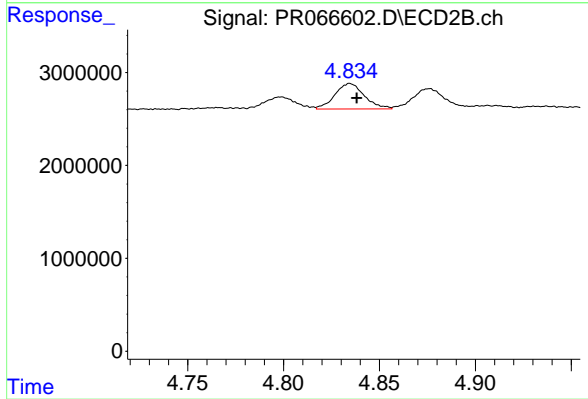
R.T.: 4.291 min  
 Delta R.T.: -0.004 min  
 Response: 2563395  
 Conc: 26.85 ng/ml



#20 AR-1242-5

R.T.: 5.845 min  
 Delta R.T.: -0.009 min  
 Response: 2425121  
 Conc: 26.97 ng/ml

Instrument : ECD\_R  
 ClientSampleId : LOD-MDL-SOIL-01-QT2-2024



#20 AR-1242-5

R.T.: 4.835 min  
 Delta R.T.: -0.004 min  
 Response: 2933593  
 Conc: 23.88 ng/ml