

Data Path : Z:\pestpcbsrv\HPCHEM1\ECD_R\Data\PR050924\
 Data File : PR066615.D
 Signal(s) : Signal #1: ECD1A.ch Signal #2: ECD2B.ch
 Acq On : 09 May 2024 20:28
 Operator : AJ\MA
 Sample : P2403-07
 Misc : AR1262 LOD 40 PPB
 ALS Vial : 38 Sample Multiplier: 1

Instrument :
 ECD_R
ClientSampleId :
 LOD-MDL-WATER-01-QT2-2024

Integration File signal 1: autoint1.e
 Integration File signal 2: autoint2.e
 Quant Time: May 10 13:14:03 2024
 Quant Method : Z:\pestpcbsrv\HPCHEM1\ECD_R\Method\PR042424.M
 Quant Title : GC EXTRACTABLES
 QLast Update : Fri Apr 26 07:26:35 2024
 Response via : Initial Calibration
 Integrator: ChemStation

Volume Inj. : 2 µl
 Signal #1 Phase : ZB-MR1 Signal #2 Phase: ZB-MR2
 Signal #1 Info : 30Mx0.32mmx 0.50µ Signal #2 Info : 30M x 0.32mm x 0.25µm

Compound	RT#1	RT#2	Resp#1	Resp#2	ng/ml	ng/ml

System Monitoring Compounds						
1) SA Tetrachlo...	3.654	2.897	106.3E6	91091584	20.285	20.380
2) SA Decachlor...	9.536	8.125	45396172	89913283	19.385	19.156
Target Compounds						
36) L8 AR-1262-1	7.253	6.201	7579438	3914958	33.225	27.096
37) L8 AR-1262-2	7.832	6.418	9792227	8716011	30.832	28.325
38) L8 AR-1262-3	8.138	6.987	6233661	6560636	29.444	27.066
39) L8 AR-1262-4	8.224	7.054	4848558	11748014	44.387	26.732 #
40) L8 AR-1262-5	8.843	7.590	2113717	5595745	20.796	25.919

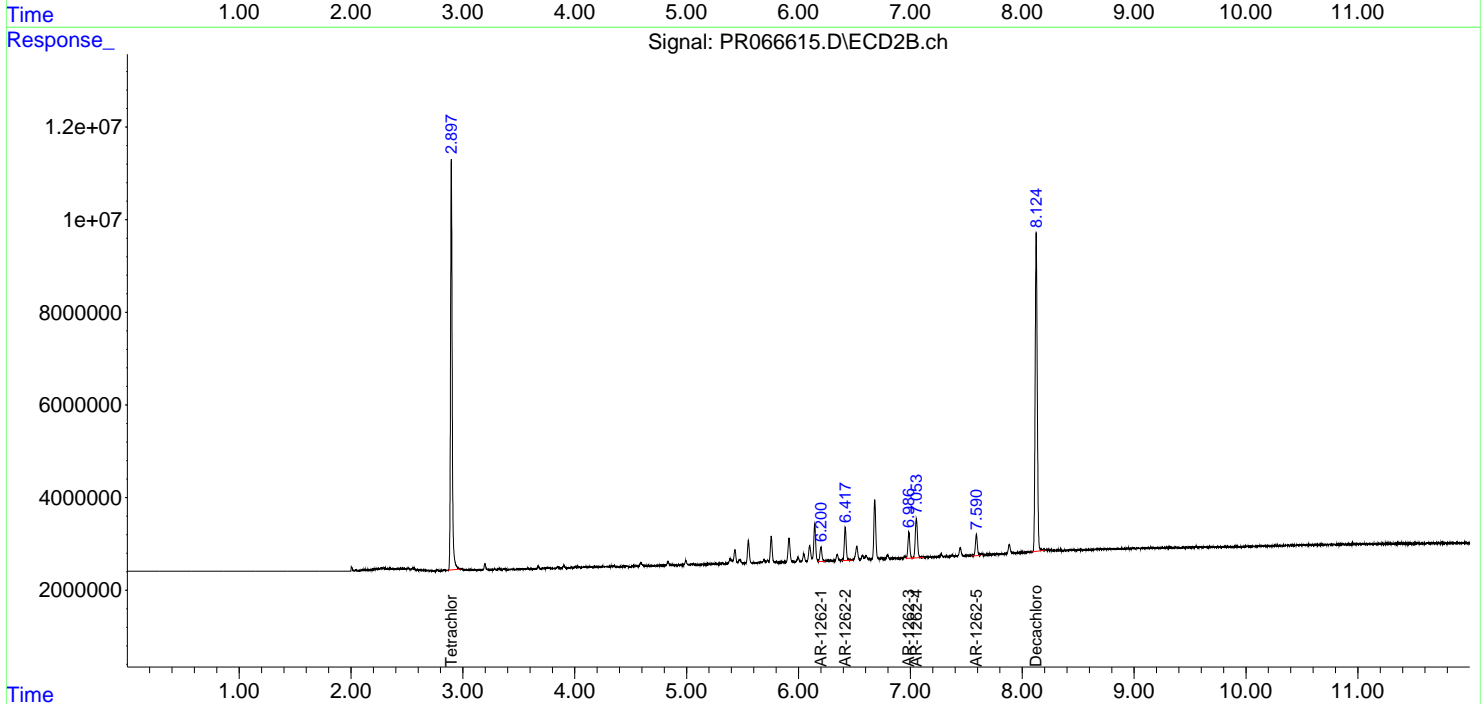
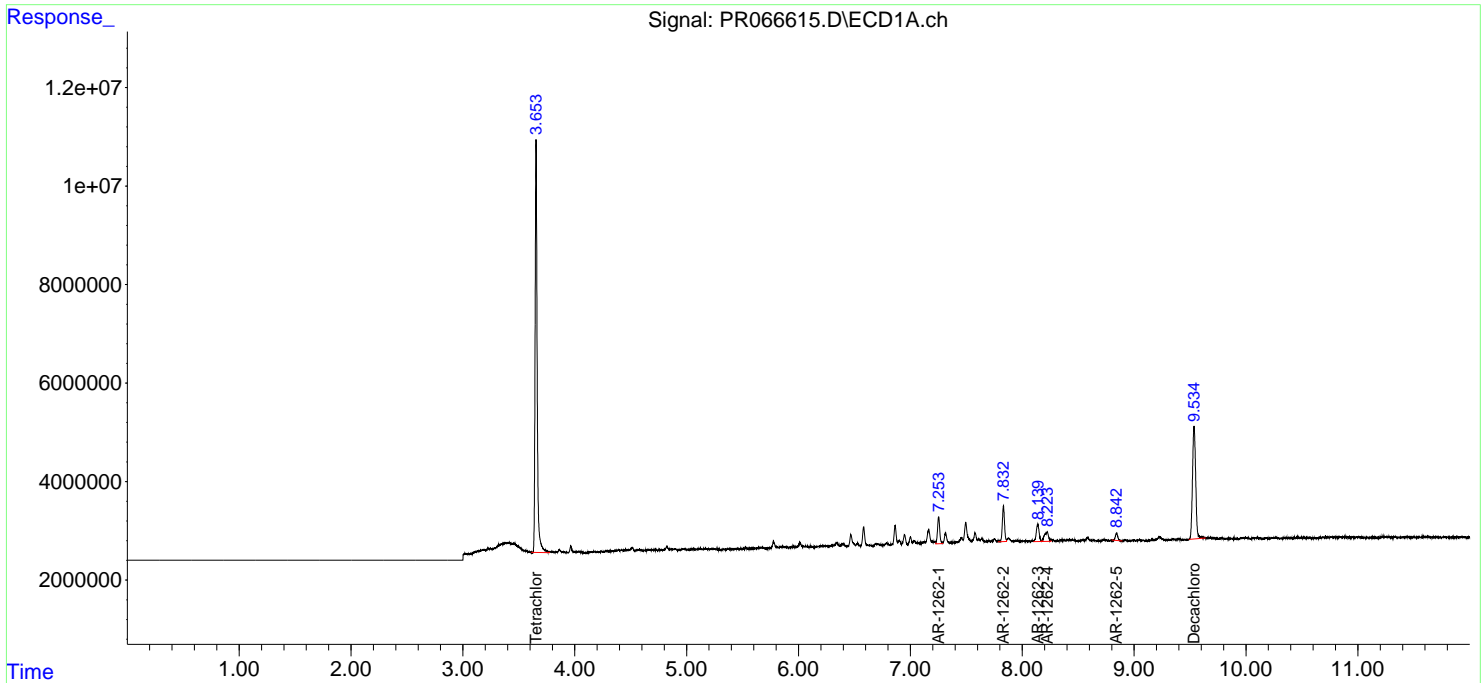
(f)=RT Delta > 1/2 Window (#)=Amounts differ by > 25% (m)=manual int.

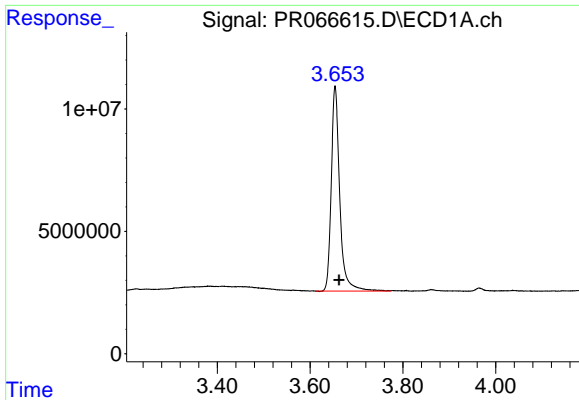
Data Path : Z:\pestpcbsrv\HPCHEM1\ECD_R\Data\PR050924\
 Data File : PR066615.D
 Signal(s) : Signal #1: ECD1A.ch Signal #2: ECD2B.ch
 Acq On : 09 May 2024 20:28
 Operator : AJ\MA
 Sample : P2403-07
 Misc : AR1262 LOD 40 PPB
 ALS Vial : 38 Sample Multiplier: 1

Instrument :
 ECD_R
ClientSampleId :
 LOD-MDL-WATER-01-QT2-2024

Integration File signal 1: autoint1.e
 Integration File signal 2: autoint2.e
 Quant Time: May 10 13:14:03 2024
 Quant Method : Z:\pestpcbsrv\HPCHEM1\ECD_R\Method\PR042424.M
 Quant Title : GC EXTRACTABLES
 QLast Update : Fri Apr 26 07:26:35 2024
 Response via : Initial Calibration
 Integrator: ChemStation

Volume Inj. : 2 µl
 Signal #1 Phase : ZB-MR1 Signal #2 Phase: ZB-MR2
 Signal #1 Info : 30Mx0.32mmx 0.50µ Signal #2 Info : 30M x 0.32mm x 0.25µm

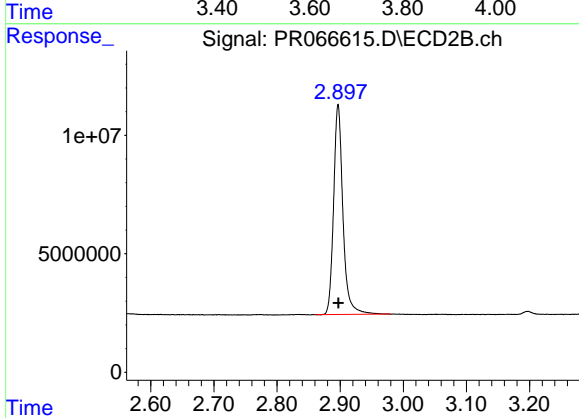




#1 Tetrachloro-m-xylene

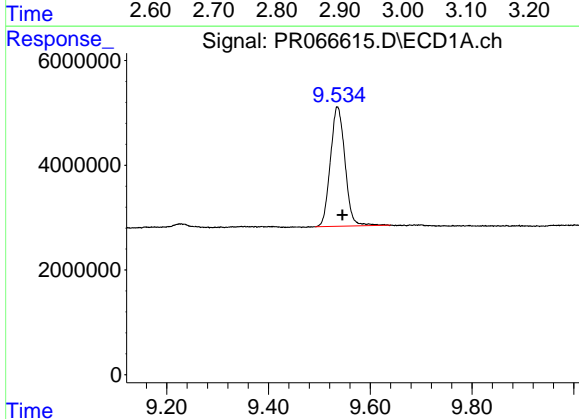
R.T.: 3.654 min
 Delta R.T.: -0.008 min
 Response: 106322736
 Conc: 20.28 ng/ml

Instrument : ECD_R
 ClientSampleId : LOD-MDL-WATER-01-QT2-2024



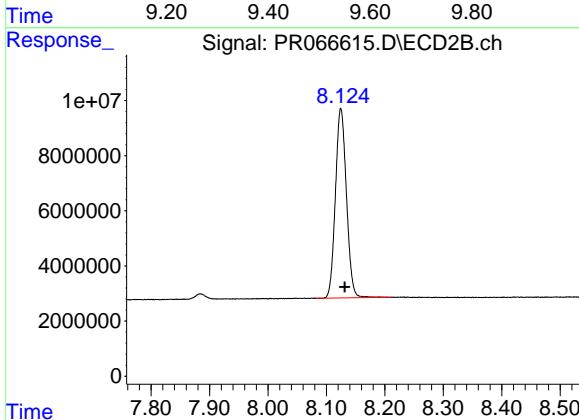
#1 Tetrachloro-m-xylene

R.T.: 2.897 min
 Delta R.T.: 0.000 min
 Response: 91091584
 Conc: 20.38 ng/ml



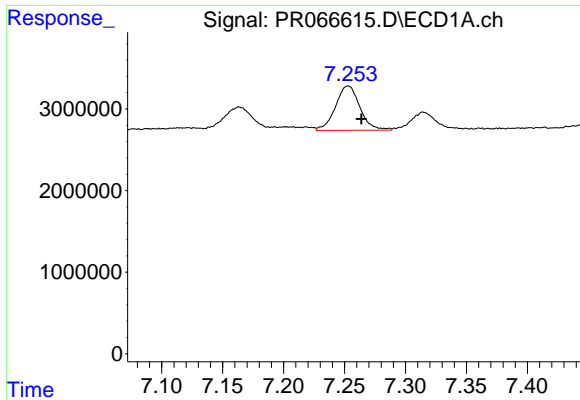
#2 Decachlorobiphenyl

R.T.: 9.536 min
 Delta R.T.: -0.009 min
 Response: 45396172
 Conc: 19.38 ng/ml



#2 Decachlorobiphenyl

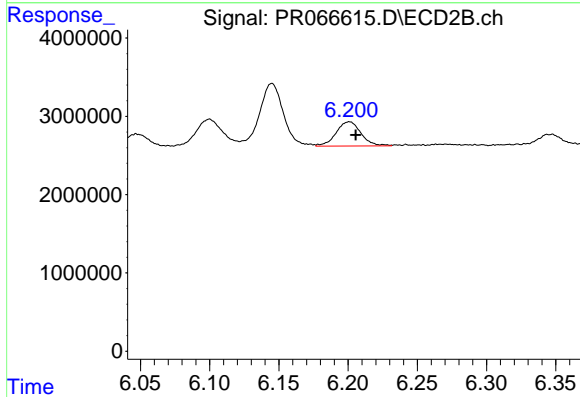
R.T.: 8.125 min
 Delta R.T.: -0.007 min
 Response: 89913283
 Conc: 19.16 ng/ml



#36 AR-1262-1

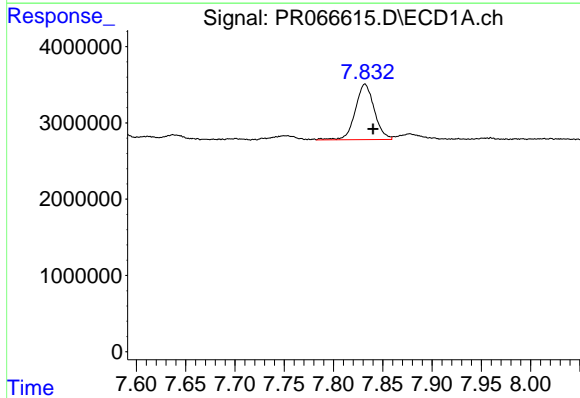
R.T.: 7.253 min
 Delta R.T.: -0.011 min
 Response: 7579438
 Conc: 33.22 ng/ml

Instrument :
 ECD_R
 ClientSampleId :
 LOD-MDL-WATER-01-QT2-2024



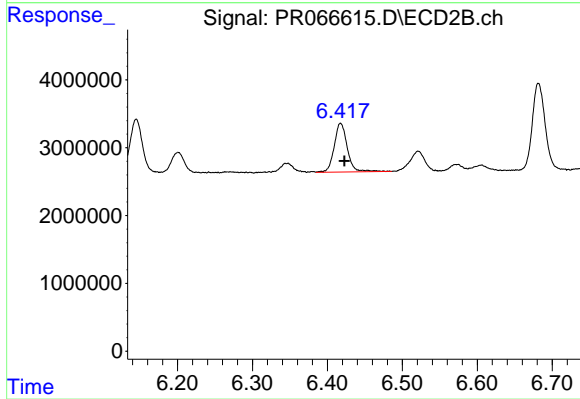
#36 AR-1262-1

R.T.: 6.201 min
 Delta R.T.: -0.005 min
 Response: 3914958
 Conc: 27.10 ng/ml



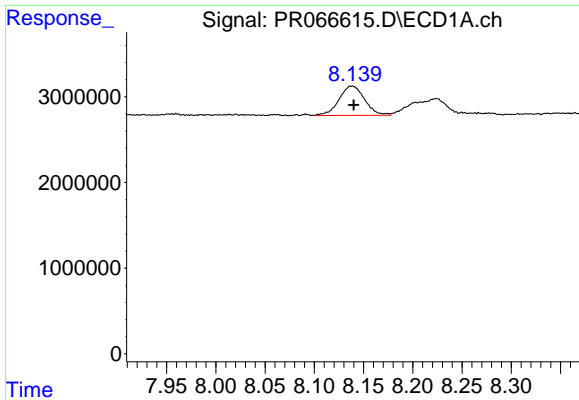
#37 AR-1262-2

R.T.: 7.832 min
 Delta R.T.: -0.008 min
 Response: 9792227
 Conc: 30.83 ng/ml



#37 AR-1262-2

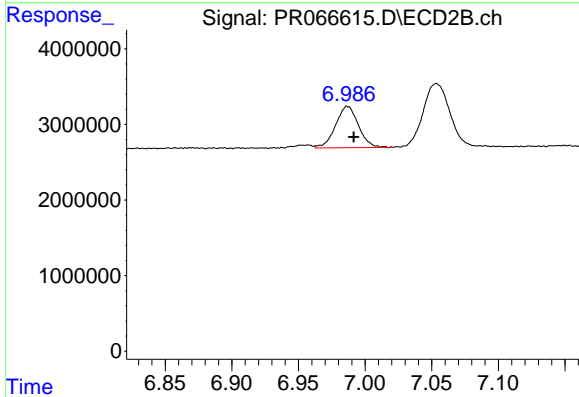
R.T.: 6.418 min
 Delta R.T.: -0.005 min
 Response: 8716011
 Conc: 28.33 ng/ml



#38 AR-1262-3

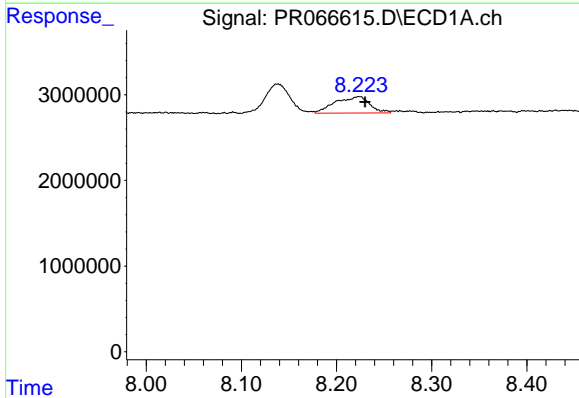
R.T.: 8.138 min
 Delta R.T.: -0.002 min
 Response: 6233661
 Conc: 29.44 ng/ml

Instrument :
 ECD_R
 ClientSampleId :
 LOD-MDL-WATER-01-QT2-2024



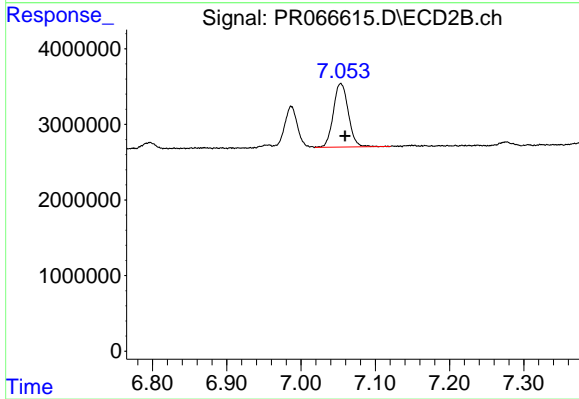
#38 AR-1262-3

R.T.: 6.987 min
 Delta R.T.: -0.005 min
 Response: 6560636
 Conc: 27.07 ng/ml



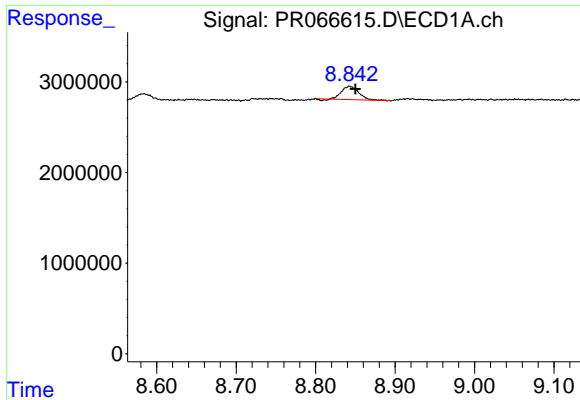
#39 AR-1262-4

R.T.: 8.224 min
 Delta R.T.: -0.006 min
 Response: 4848558
 Conc: 44.39 ng/ml



#39 AR-1262-4

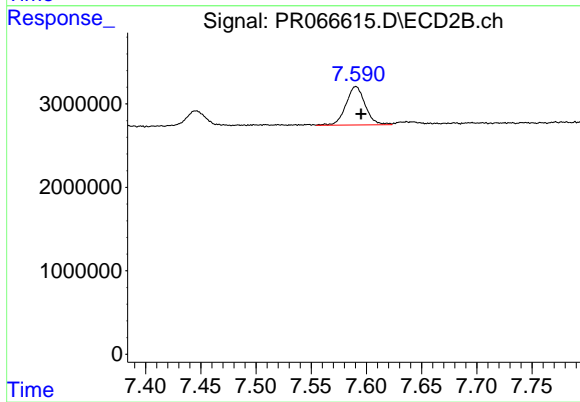
R.T.: 7.054 min
 Delta R.T.: -0.006 min
 Response: 11748014
 Conc: 26.73 ng/ml



#40 AR-1262-5

R.T.: 8.843 min
Delta R.T.: -0.007 min
Response: 2113717
Conc: 20.80 ng/ml

Instrument :
ECD_R
ClientSampleId :
LOD-MDL-WATER-01-QT2-2024



#40 AR-1262-5

R.T.: 7.590 min
Delta R.T.: -0.005 min
Response: 5595745
Conc: 25.92 ng/ml