

Data Path : Z:\pestpcbsrv\HPCHEM1\ECD_R\Data\PR050924\
 Data File : PR066626.D
 Signal(s) : Signal #1: ECD1A.ch Signal #2: ECD2B.ch
 Acq On : 09 May 2024 23:10
 Operator : AJ\MA
 Sample : P2403-02
 Misc : AR1262 LOQ 50 PPB
 ALS Vial : 47 Sample Multiplier: 1

Instrument :
 ECD_R
ClientSampleId :
 LOQ-SOIL-02-QT2-2024

Integration File signal 1: autoint1.e
 Integration File signal 2: autoint2.e
 Quant Time: May 10 13:11:30 2024
 Quant Method : Z:\pestpcbsrv\HPCHEM1\ECD_R\Method\PR042424.M
 Quant Title : GC EXTRACTABLES
 QLast Update : Fri Apr 26 07:26:35 2024
 Response via : Initial Calibration
 Integrator: ChemStation

Volume Inj. : 2 µl
 Signal #1 Phase : ZB-MR1 Signal #2 Phase: ZB-MR2
 Signal #1 Info : 30Mx0.32mmx 0.50µ Signal #2 Info : 30M x 0.32mm x 0.25µm

Compound	RT#1	RT#2	Resp#1	Resp#2	ng/ml	ng/ml

System Monitoring Compounds						
1) SA Tetrachlo...	3.652	2.894	110.2E6	88806069	21.029	19.869
2) SA Decachlor...	9.536	8.123	47999900	89593933	20.497	19.088
Target Compounds						
36) L8 AR-1262-1	7.252	6.200	13919132	6945115	61.015	48.067
37) L8 AR-1262-2	7.831	6.416	18573262	15407470	58.480	50.071
38) L8 AR-1262-3	8.137	6.985	12766947	12137278	60.303	50.073
39) L8 AR-1262-4	8.222	7.053	9051522	21688904	82.864	49.352 #
40) L8 AR-1262-5	8.842	7.588	5167276	10827895	50.838	50.154

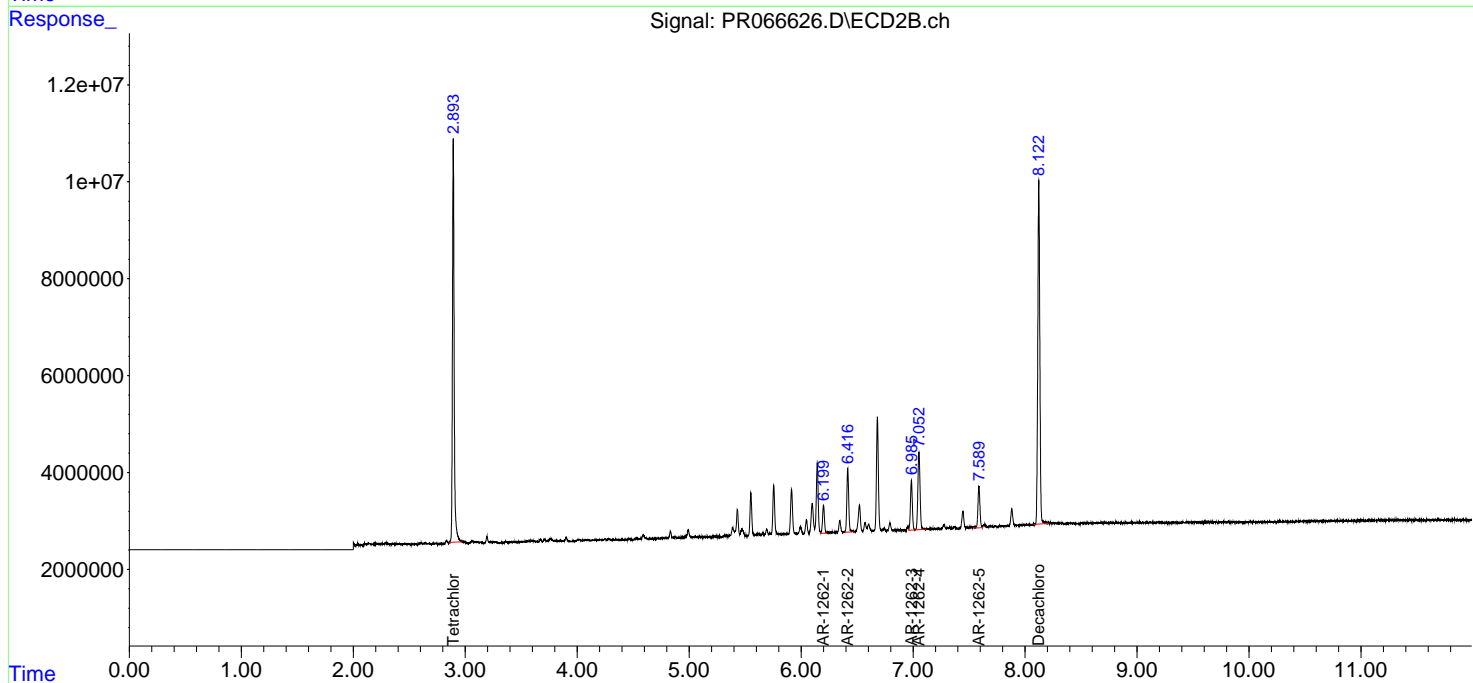
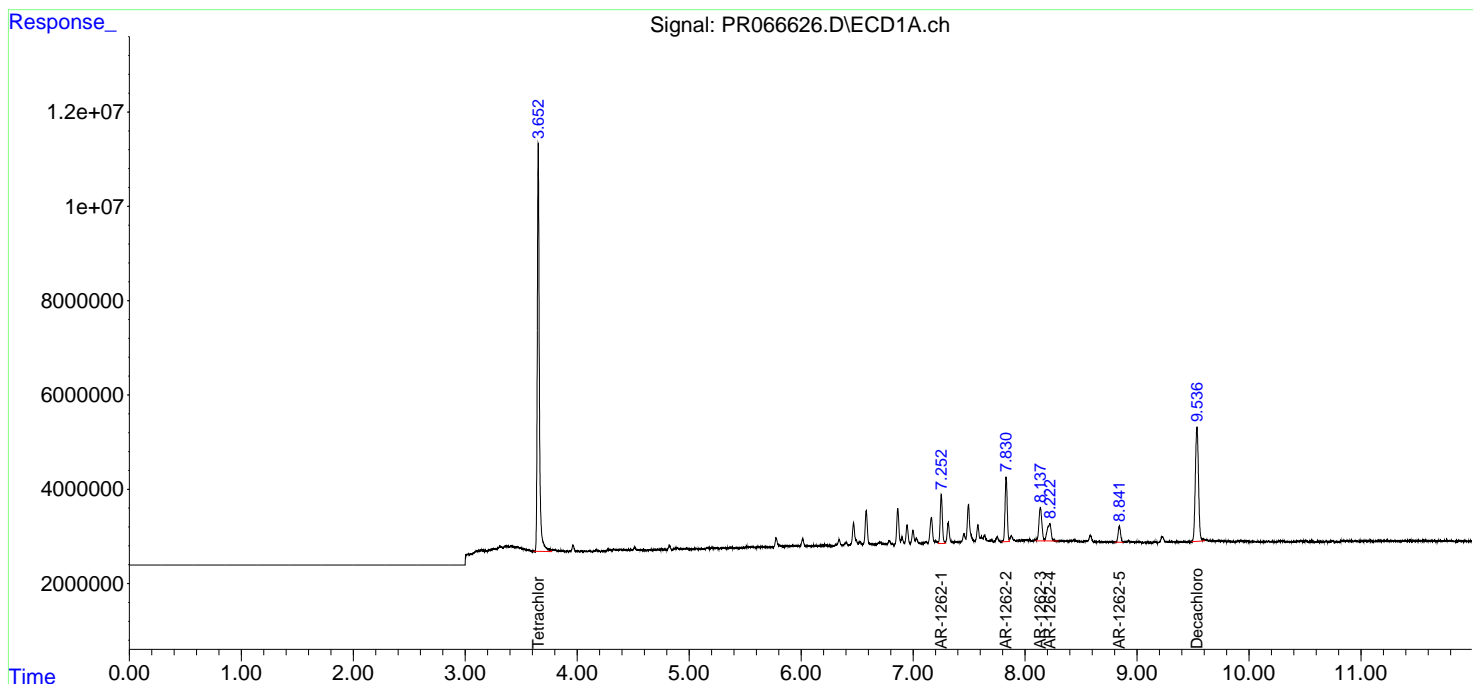
(f)=RT Delta > 1/2 Window (#)=Amounts differ by > 25% (m)=manual int.

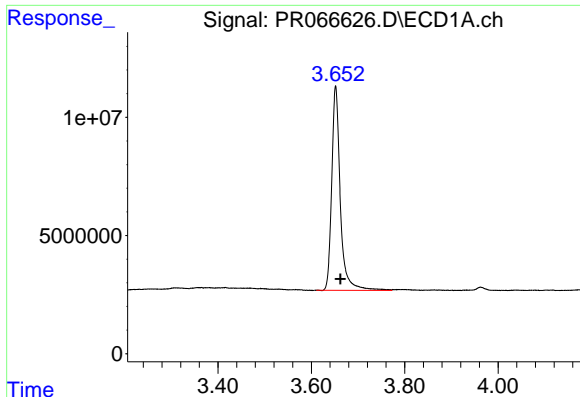
Data Path : Z:\pestpcbsrv\HPCHEM1\ECD_R\Data\PR050924\
 Data File : PR066626.D
 Signal(s) : Signal #1: ECD1A.ch Signal #2: ECD2B.ch
 Acq On : 09 May 2024 23:10
 Operator : AJ\MA
 Sample : P2403-02
 Misc : AR1262 LOQ 50 PPB
 ALS Vial : 47 Sample Multiplier: 1

Instrument :
 ECD_R
 ClientSampleId :
 LOQ-SOIL-02-QT2-2024

Integration File signal 1: autoint1.e
 Integration File signal 2: autoint2.e
 Quant Time: May 10 13:11:30 2024
 Quant Method : Z:\pestpcbsrv\HPCHEM1\ECD_R\Method\PR042424.M
 Quant Title : GC EXTRACTABLES
 QLast Update : Fri Apr 26 07:26:35 2024
 Response via : Initial Calibration
 Integrator: ChemStation

Volume Inj. : 2 µl
 Signal #1 Phase : ZB-MR1 Signal #2 Phase: ZB-MR2
 Signal #1 Info : 30Mx0.32mmx 0.50µ Signal #2 Info : 30M x 0.32mm x 0.25µm

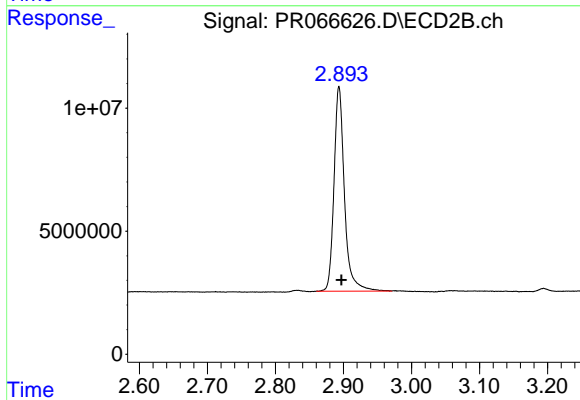




#1 Tetrachloro-m-xylene

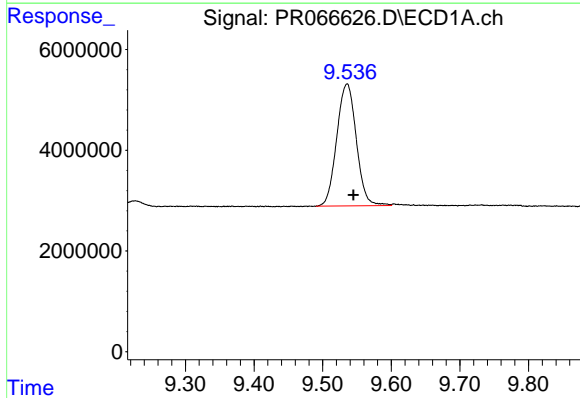
R.T.: 3.652 min
 Delta R.T.: -0.010 min
 Response: 110221966
 Conc: 21.03 ng/ml

Instrument :
 ECD_R
 ClientSampleId :
 LOQ-SOIL-02-QT2-2024



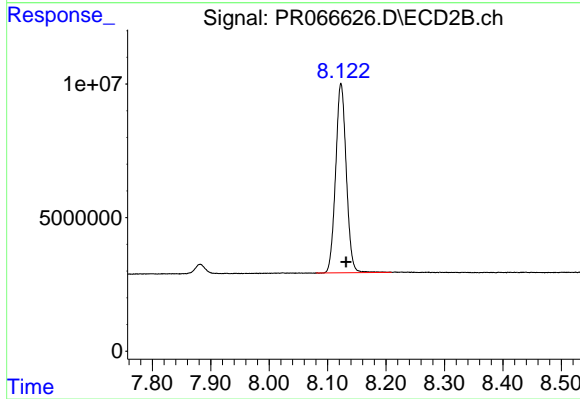
#1 Tetrachloro-m-xylene

R.T.: 2.894 min
 Delta R.T.: -0.004 min
 Response: 88806069
 Conc: 19.87 ng/ml



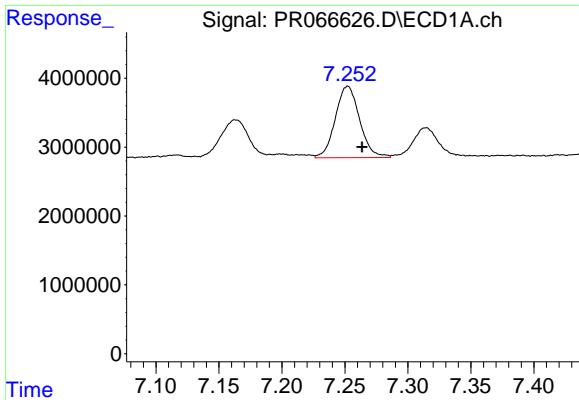
#2 Decachlorobiphenyl

R.T.: 9.536 min
 Delta R.T.: -0.009 min
 Response: 47999900
 Conc: 20.50 ng/ml



#2 Decachlorobiphenyl

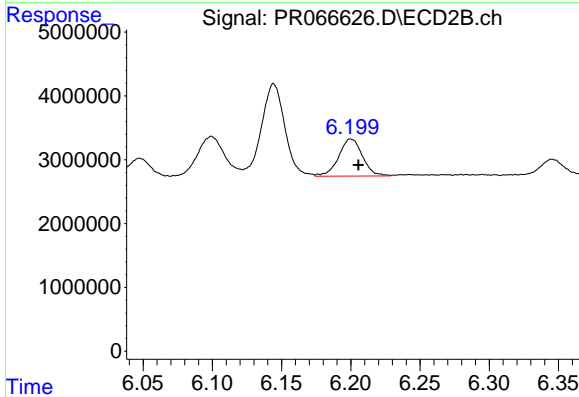
R.T.: 8.123 min
 Delta R.T.: -0.009 min
 Response: 89593933
 Conc: 19.09 ng/ml



#36 AR-1262-1

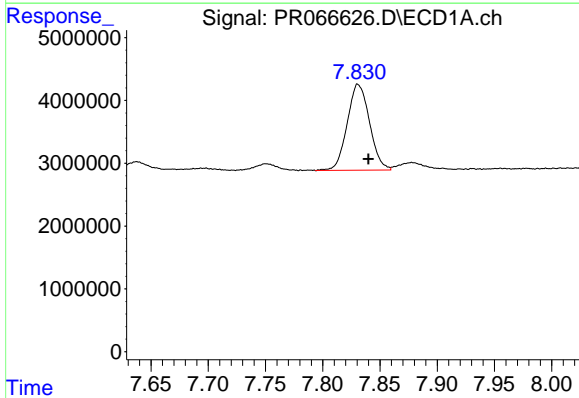
R.T.: 7.252 min
 Delta R.T.: -0.012 min
 Response: 13919132
 Conc: 61.02 ng/ml

Instrument : ECD_R
 ClientSampleId : LOQ-SOIL-02-QT2-2024



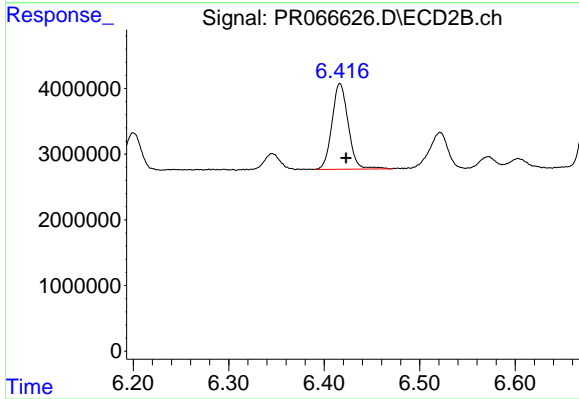
#36 AR-1262-1

R.T.: 6.200 min
 Delta R.T.: -0.005 min
 Response: 6945115
 Conc: 48.07 ng/ml



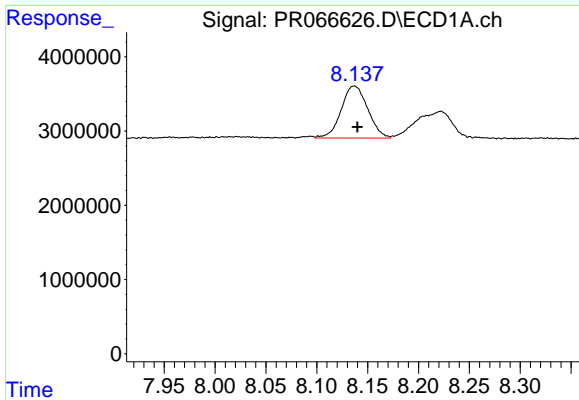
#37 AR-1262-2

R.T.: 7.831 min
 Delta R.T.: -0.009 min
 Response: 18573262
 Conc: 58.48 ng/ml



#37 AR-1262-2

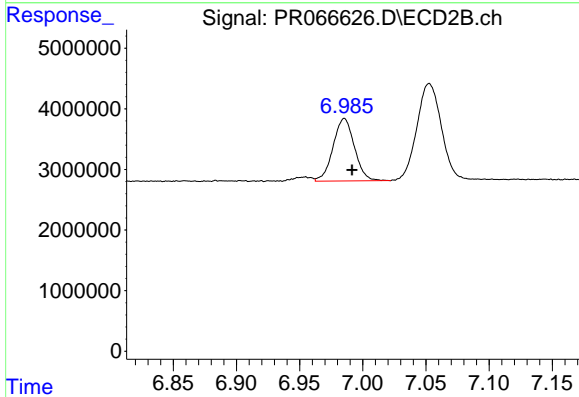
R.T.: 6.416 min
 Delta R.T.: -0.006 min
 Response: 15407470
 Conc: 50.07 ng/ml



#38 AR-1262-3

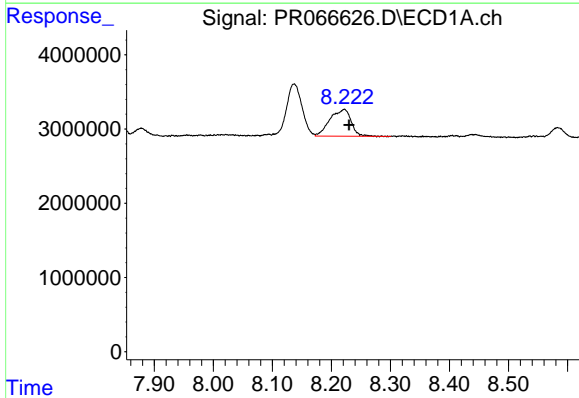
R.T.: 8.137 min
 Delta R.T.: -0.003 min
 Response: 12766947
 Conc: 60.30 ng/ml

Instrument :
 ECD_R
 ClientSampleId :
 LOQ-SOIL-02-QT2-2024



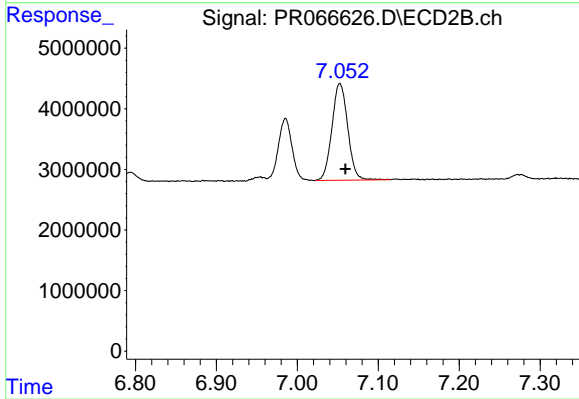
#38 AR-1262-3

R.T.: 6.985 min
 Delta R.T.: -0.006 min
 Response: 12137278
 Conc: 50.07 ng/ml



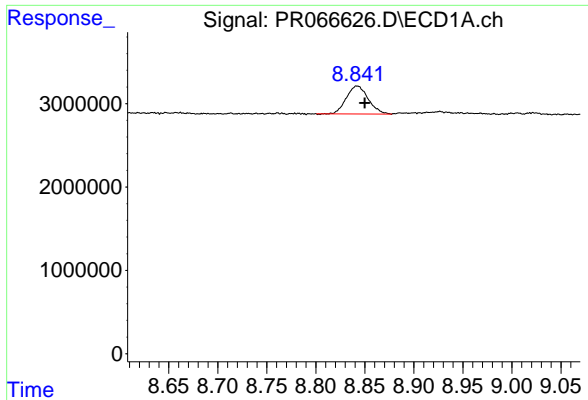
#39 AR-1262-4

R.T.: 8.222 min
 Delta R.T.: -0.008 min
 Response: 9051522
 Conc: 82.86 ng/ml



#39 AR-1262-4

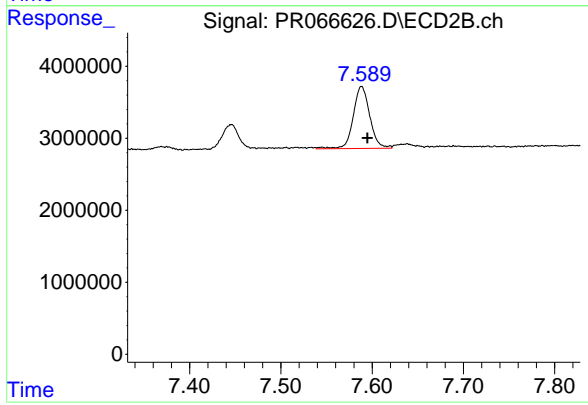
R.T.: 7.053 min
 Delta R.T.: -0.007 min
 Response: 21688904
 Conc: 49.35 ng/ml



#40 AR-1262-5

R.T.: 8.842 min
Delta R.T.: -0.008 min
Response: 5167276
Conc: 50.84 ng/ml

Instrument :
ECD_R
ClientSampleId :
LOQ-SOIL-02-QT2-2024



#40 AR-1262-5

R.T.: 7.588 min
Delta R.T.: -0.007 min
Response: 10827895
Conc: 50.15 ng/ml