

Data Path : Z:\pestpcbsrv\HPCHEM1\ECD_R\Data\PR050924\
 Data File : PR066644.D
 Signal(s) : Signal #1: ECD1A.ch Signal #2: ECD2B.ch
 Acq On : 10 May 2024 03:34
 Operator : AJ\MA
 Sample : P2403-03
 Misc : AR1242 MDL 25 PPB
 ALS Vial : 61 Sample Multiplier: 1

Instrument :
 ECD_R
ClientSampleId :
 MDL-SOIL-03-QT2-2024

Integration File signal 1: autoint1.e
 Integration File signal 2: autoint2.e
 Quant Time: May 10 06:53:22 2024
 Quant Method : Z:\pestpcbsrv\HPCHEM1\ECD_R\Method\PR042424.M
 Quant Title : GC EXTRACTABLES
 QLast Update : Fri Apr 26 07:26:35 2024
 Response via : Initial Calibration
 Integrator: ChemStation

Volume Inj. : 2 µl
 Signal #1 Phase : ZB-MR2 Signal #2 Phase: ZB-MR2
 Signal #1 Info : 30Mx0.32mmx 0.50µ Signal #2 Info : 30M x 0.32mm x 0.25µm

Compound	RT#1	RT#2	Resp#1	Resp#2	ng/ml	ng/ml

System Monitoring Compounds						
1) SA Tetrachlo...	3.653	2.895	79706458	65951586	15.207	14.755
2) SA Decachlor...	9.533	8.123	34417318	67660339	14.697	14.415
Target Compounds						
16) L4 AR-1242-1	4.873	4.004	2510091	2614672	21.089	20.887
17) L4 AR-1242-2	4.894	4.021	4075000	3466695	22.673	19.559
18) L4 AR-1242-3	4.958	4.199	3034547	1879047	25.473	19.556
19) L4 AR-1242-4	5.060	4.290	2494929	2003677	26.356	20.988
20) L4 AR-1242-5	5.845	4.834	2352181	2386659	26.158	19.431 #

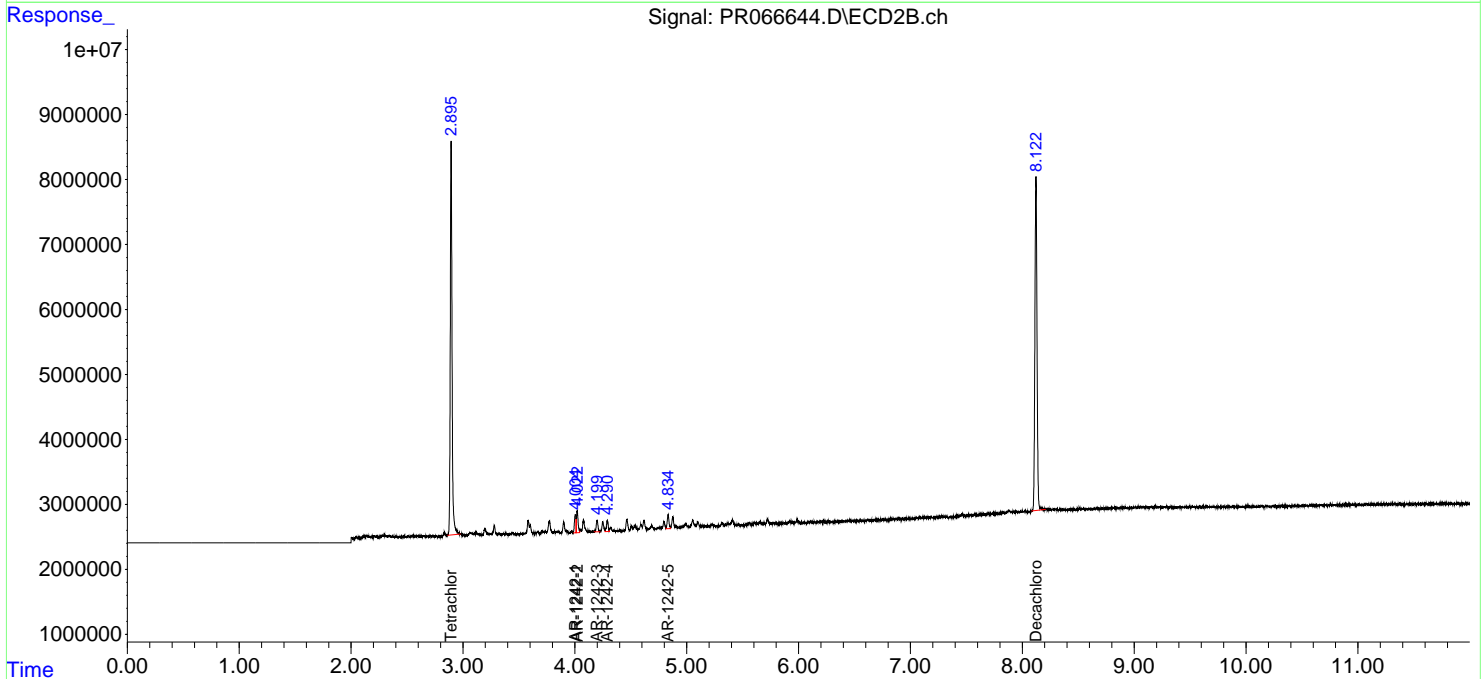
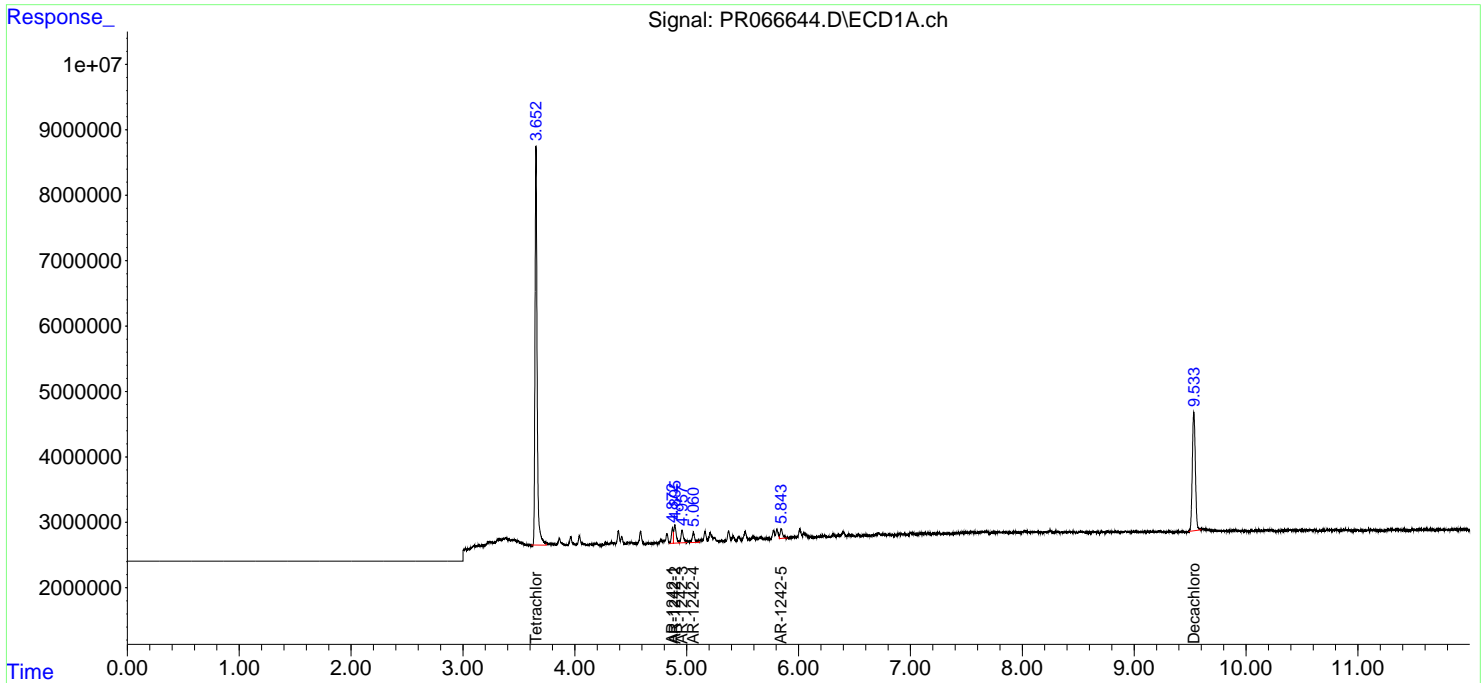
(f)=RT Delta > 1/2 Window (#)=Amounts differ by > 25% (m)=manual int.

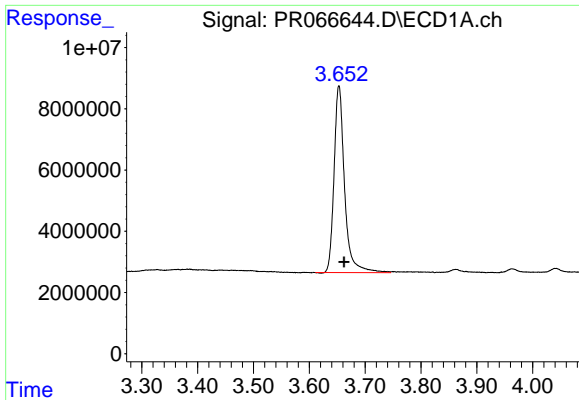
Data Path : Z:\pestpcbsrv\HPCHEM1\ECD_R\Data\PR050924\
 Data File : PR066644.D
 Signal(s) : Signal #1: ECD1A.ch Signal #2: ECD2B.ch
 Acq On : 10 May 2024 03:34
 Operator : AJ\MA
 Sample : P2403-03
 Misc : AR1242 MDL 25 PPB
 ALS Vial : 61 Sample Multiplier: 1

Instrument :
 ECD_R
ClientSampleId :
 MDL-SOIL-03-QT2-2024

Integration File signal 1: autoint1.e
 Integration File signal 2: autoint2.e
 Quant Time: May 10 06:53:22 2024
 Quant Method : Z:\pestpcbsrv\HPCHEM1\ECD_R\Method\PR042424.M
 Quant Title : GC EXTRACTABLES
 QLast Update : Fri Apr 26 07:26:35 2024
 Response via : Initial Calibration
 Integrator: ChemStation

Volume Inj. : 2 µl
 Signal #1 Phase : ZB-MR1 Signal #2 Phase: ZB-MR2
 Signal #1 Info : 30Mx0.32mmx 0.50µ Signal #2 Info : 30M x 0.32mm x 0.25µm

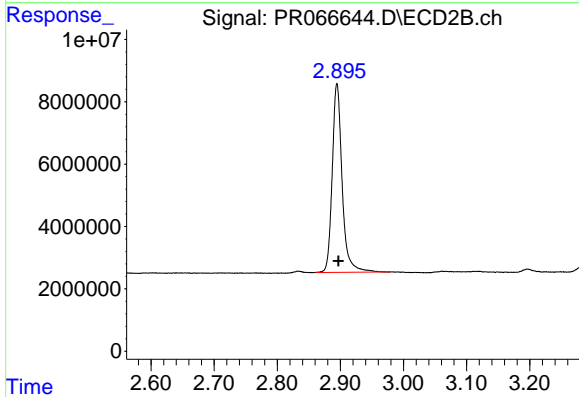




#1 Tetrachloro-m-xylene

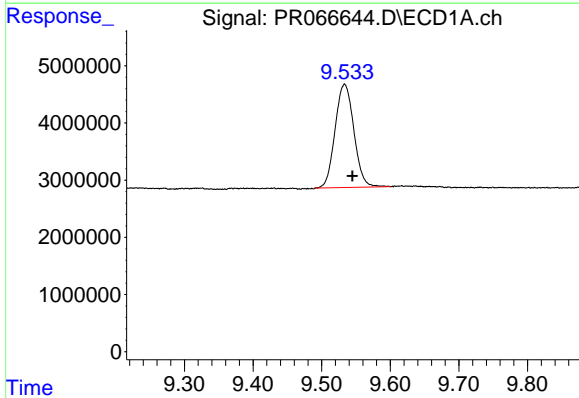
R.T.: 3.653 min
 Delta R.T.: -0.009 min
 Response: 79706458
 Conc: 15.21 ng/ml

Instrument :
 ECD_R
 ClientSampleId :
 MDL-SOIL-03-QT2-2024



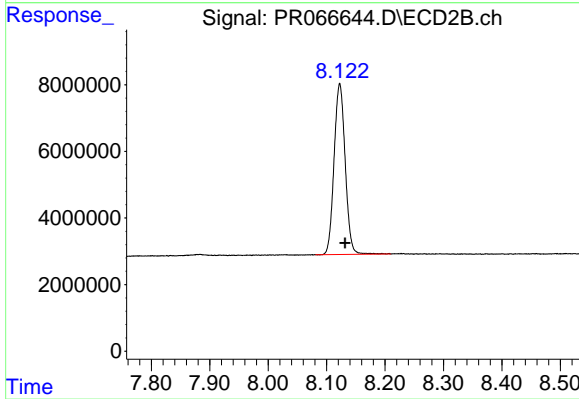
#1 Tetrachloro-m-xylene

R.T.: 2.895 min
 Delta R.T.: -0.002 min
 Response: 65951586
 Conc: 14.76 ng/ml



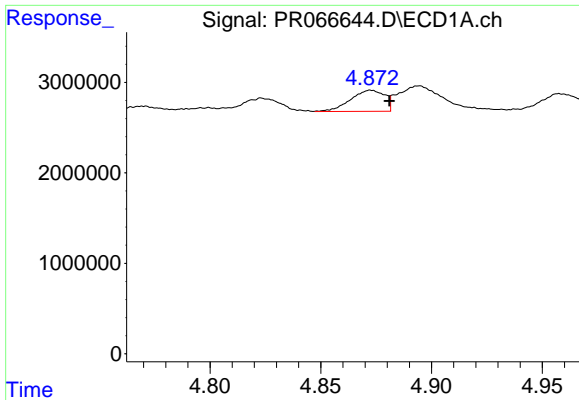
#2 Decachlorobiphenyl

R.T.: 9.533 min
 Delta R.T.: -0.012 min
 Response: 34417318
 Conc: 14.70 ng/ml



#2 Decachlorobiphenyl

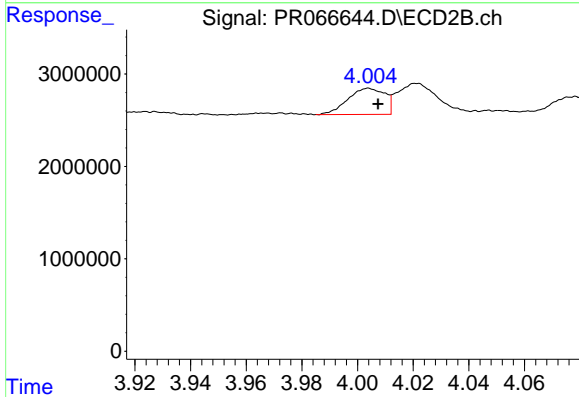
R.T.: 8.123 min
 Delta R.T.: -0.009 min
 Response: 67660339
 Conc: 14.42 ng/ml



#16 AR-1242-1

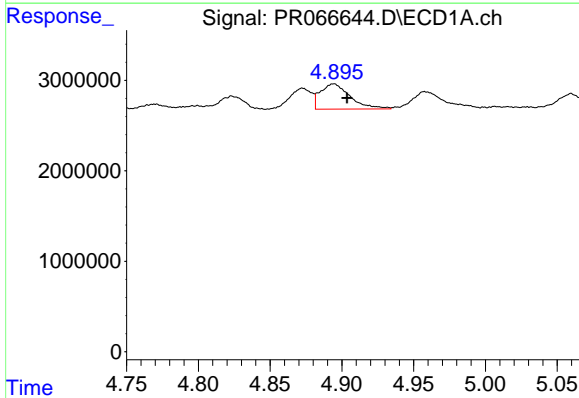
R.T.: 4.873 min
 Delta R.T.: -0.008 min
 Response: 2510091
 Conc: 21.09 ng/ml

Instrument :
 ECD_R
 ClientSampleId :
 MDL-SOIL-03-QT2-2024



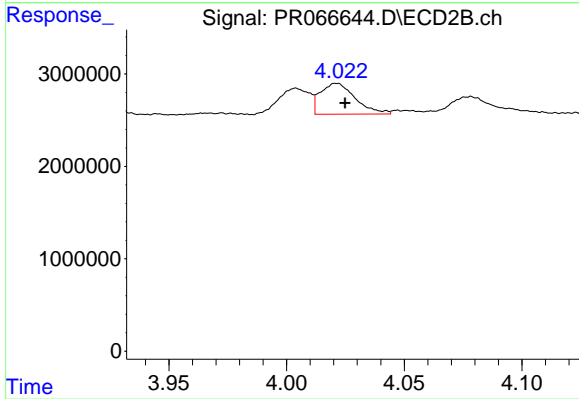
#16 AR-1242-1

R.T.: 4.004 min
 Delta R.T.: -0.003 min
 Response: 2614672
 Conc: 20.89 ng/ml



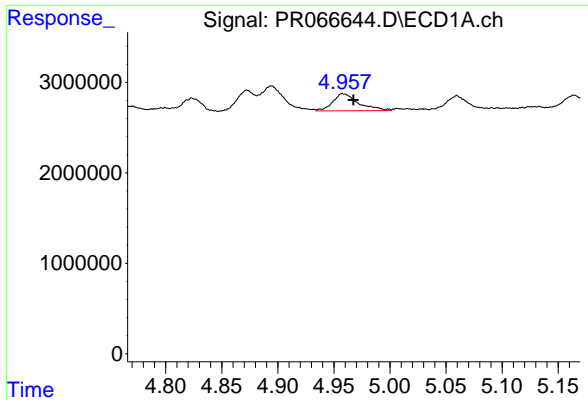
#17 AR-1242-2

R.T.: 4.894 min
 Delta R.T.: -0.009 min
 Response: 4075000
 Conc: 22.67 ng/ml



#17 AR-1242-2

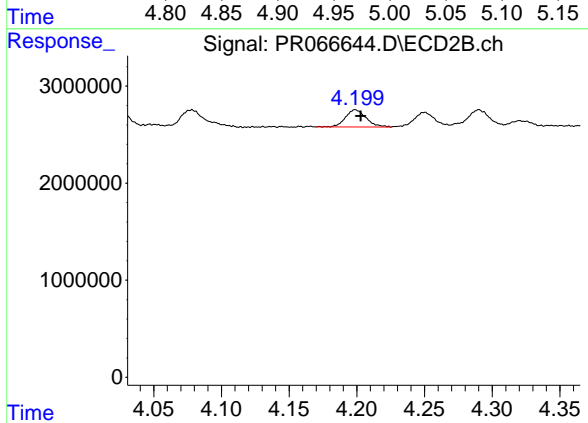
R.T.: 4.021 min
 Delta R.T.: -0.004 min
 Response: 3466695
 Conc: 19.56 ng/ml



#18 AR-1242-3

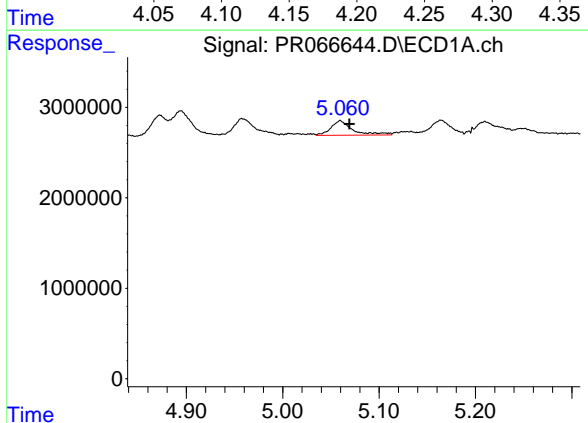
R.T.: 4.958 min
 Delta R.T.: -0.010 min
 Response: 3034547
 Conc: 25.47 ng/ml

Instrument : ECD_R
 ClientSampleId : MDL-SOIL-03-QT2-2024



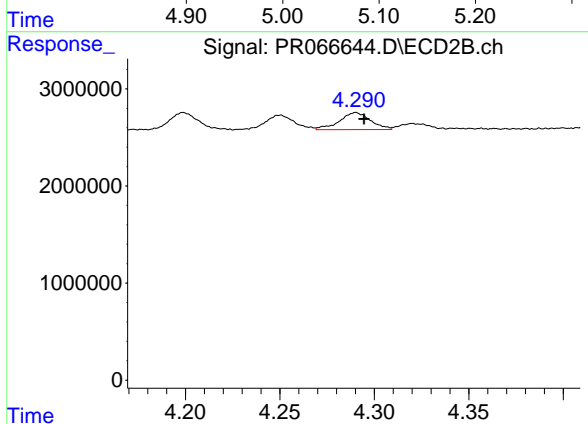
#18 AR-1242-3

R.T.: 4.199 min
 Delta R.T.: -0.004 min
 Response: 1879047
 Conc: 19.56 ng/ml



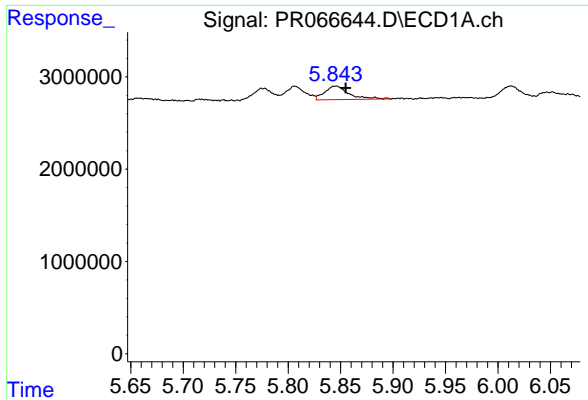
#19 AR-1242-4

R.T.: 5.060 min
 Delta R.T.: -0.009 min
 Response: 2494929
 Conc: 26.36 ng/ml



#19 AR-1242-4

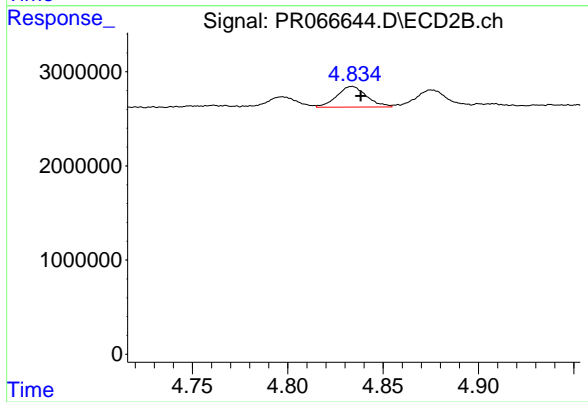
R.T.: 4.290 min
 Delta R.T.: -0.004 min
 Response: 2003677
 Conc: 20.99 ng/ml



#20 AR-1242-5

R.T.: 5.845 min
 Delta R.T.: -0.009 min
 Response: 2352181
 Conc: 26.16 ng/ml

Instrument :
 ECD_R
 ClientSampleId :
 MDL-SOIL-03-QT2-2024



#20 AR-1242-5

R.T.: 4.834 min
 Delta R.T.: -0.004 min
 Response: 2386659
 Conc: 19.43 ng/ml