

Data Path : Z:\pestpcbsrv\HPCHEM1\ECD_R\Data\PR050924\
 Data File : PR066648.D
 Signal(s) : Signal #1: ECD1A.ch Signal #2: ECD2B.ch
 Acq On : 10 May 2024 04:33
 Operator : AJ\MA
 Sample : P2403-03
 Misc : AR1268 MDL 25 PPB
 ALS Vial : 65 Sample Multiplier: 1

Instrument :
 ECD_R
ClientSampleId :
 MDL-SOIL-03-QT2-2024

Integration File signal 1: autoint1.e
 Integration File signal 2: autoint2.e
 Quant Time: May 10 13:02:32 2024
 Quant Method : Z:\pestpcbsrv\HPCHEM1\ECD_R\Method\PR042424.M
 Quant Title : GC EXTRACTABLES
 QLast Update : Fri Apr 26 07:26:35 2024
 Response via : Initial Calibration
 Integrator: ChemStation

Volume Inj. : 2 µl
 Signal #1 Phase : ZB-MR1 Signal #2 Phase: ZB-MR2
 Signal #1 Info : 30Mx0.32mmx 0.50µ Signal #2 Info : 30M x 0.32mm x 0.25µm

Compound	RT#1	RT#2	Resp#1	Resp#2	ng/ml	ng/ml

System Monitoring Compounds						
1) SA Tetrachlo...	3.652	2.894	89883914	72666556	17.149	16.258
2) SA Decachlor...	9.533	8.121	40804857	78740875	17.424	16.776
Target Compounds						
41) L9 AR-1268-1	8.131	6.984	9347018	15076152	23.975	20.822
42) L9 AR-1268-2	8.222	7.053	8456029	13196417	24.612	20.562
43) L9 AR-1268-3	8.438	7.273	6923158	11897258	22.552	20.977
44) L9 AR-1268-4	8.842	7.588	2282213	4826979	19.640	19.778
45) L9 AR-1268-5	9.224	7.881	17047969	33740151	20.906	20.822

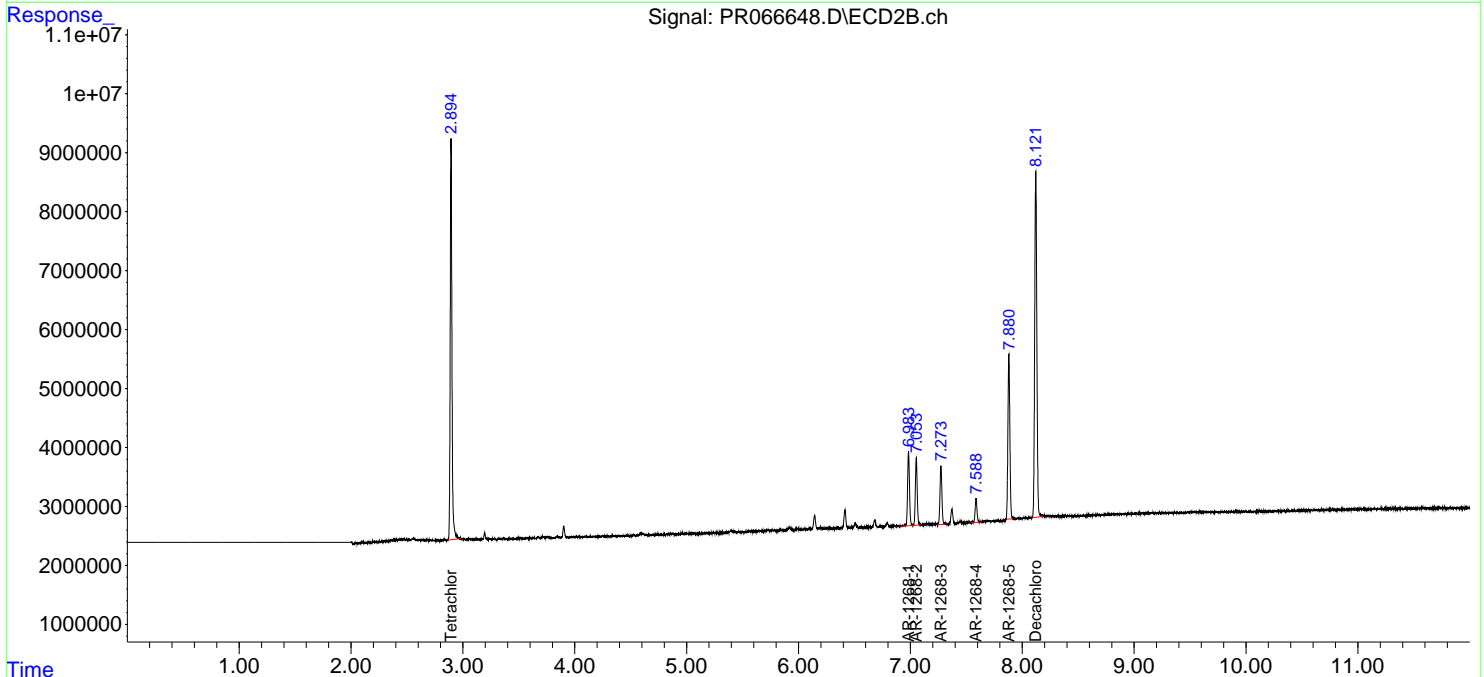
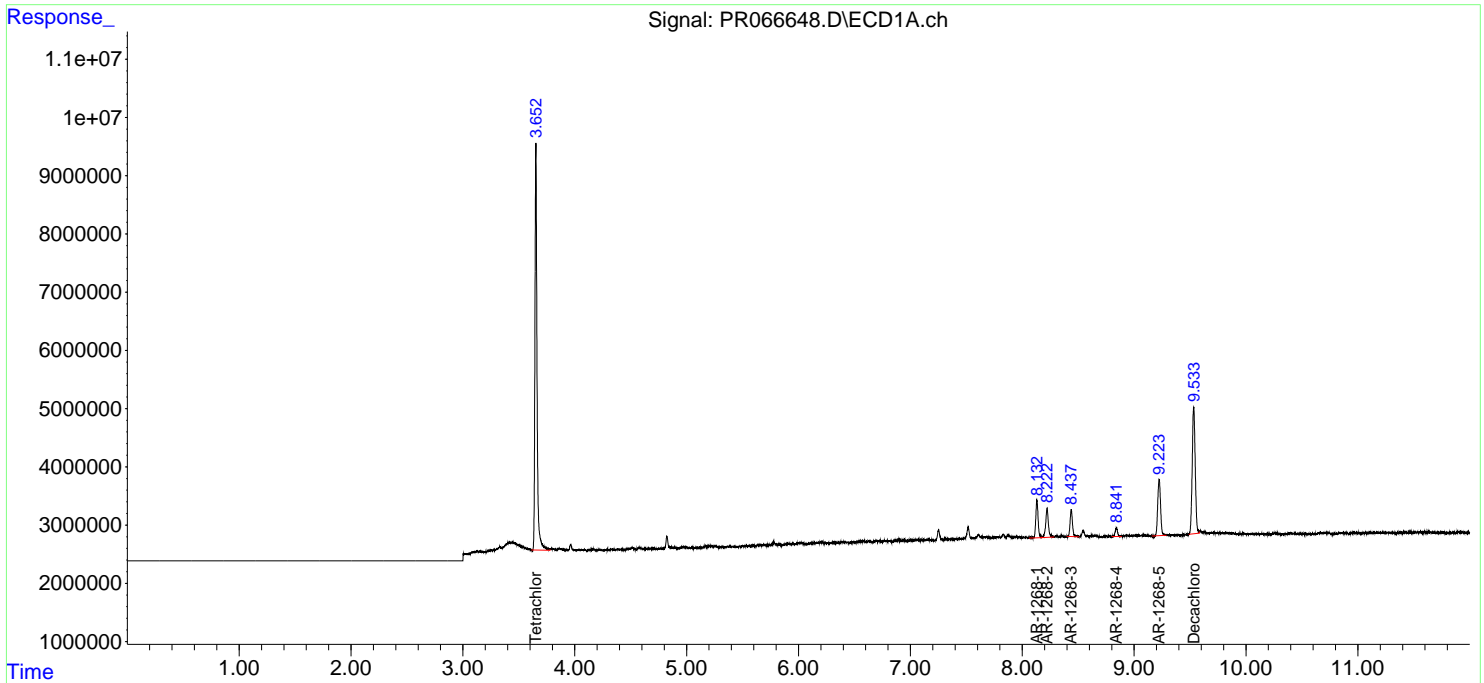
(f)=RT Delta > 1/2 Window (#)=Amounts differ by > 25% (m)=manual int.

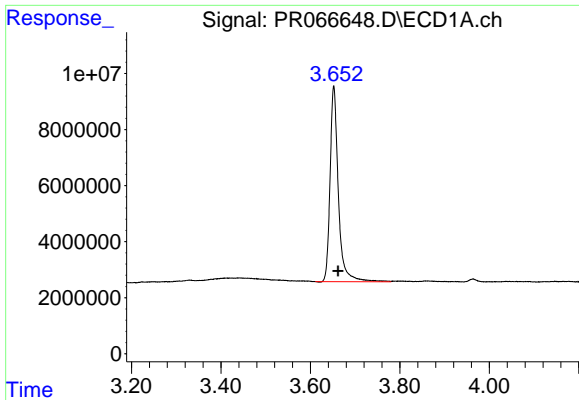
Data Path : Z:\pestpcbsrv\HPCHEM1\ECD_R\Data\PR050924\
 Data File : PR066648.D
 Signal(s) : Signal #1: ECD1A.ch Signal #2: ECD2B.ch
 Acq On : 10 May 2024 04:33
 Operator : AJ\MA
 Sample : P2403-03
 Misc : AR1268 MDL 25 PPB
 ALS Vial : 65 Sample Multiplier: 1

Instrument :
 ECD_R
ClientSampleId :
 MDL-SOIL-03-QT2-2024

Integration File signal 1: autoint1.e
 Integration File signal 2: autoint2.e
 Quant Time: May 10 13:02:32 2024
 Quant Method : Z:\pestpcbsrv\HPCHEM1\ECD_R\Method\PR042424.M
 Quant Title : GC EXTRACTABLES
 QLast Update : Fri Apr 26 07:26:35 2024
 Response via : Initial Calibration
 Integrator: ChemStation

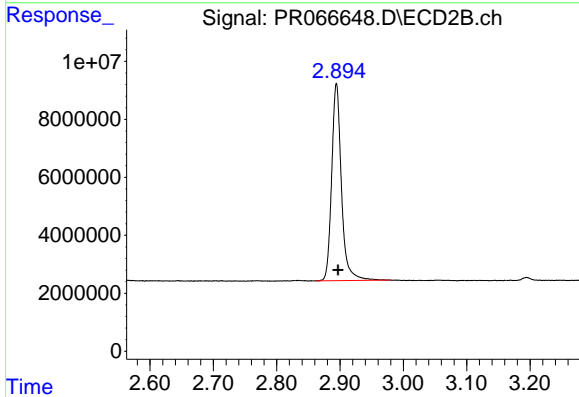
Volume Inj. : 2 µl
 Signal #1 Phase : ZB-MR1 Signal #2 Phase: ZB-MR2
 Signal #1 Info : 30Mx0.32mmx 0.50µ Signal #2 Info : 30M x 0.32mm x 0.25µm



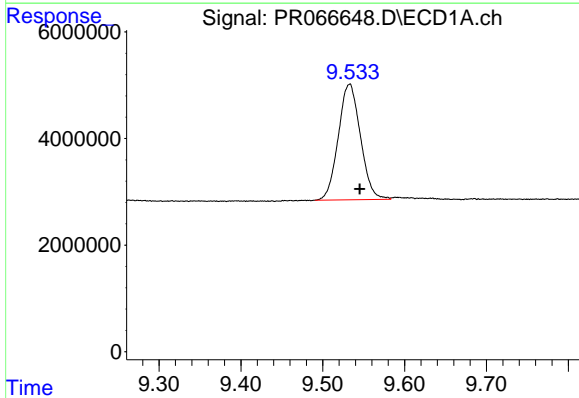


#1 Tetrachloro-m-xylene
 R.T.: 3.652 min
 Delta R.T.: -0.010 min
 Response: 89883914
 Conc: 17.15 ng/ml

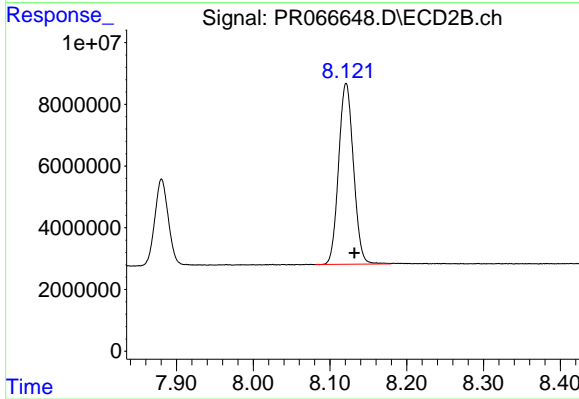
Instrument :
 ECD_R
 ClientSampleId :
 MDL-SOIL-03-QT2-2024



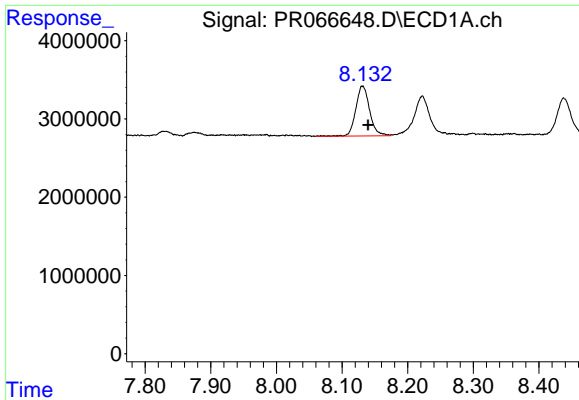
#1 Tetrachloro-m-xylene
 R.T.: 2.894 min
 Delta R.T.: -0.003 min
 Response: 72666556
 Conc: 16.26 ng/ml



#2 Decachlorobiphenyl
 R.T.: 9.533 min
 Delta R.T.: -0.012 min
 Response: 40804857
 Conc: 17.42 ng/ml



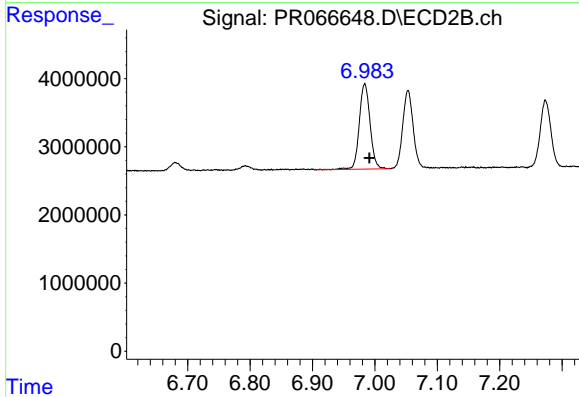
#2 Decachlorobiphenyl
 R.T.: 8.121 min
 Delta R.T.: -0.011 min
 Response: 78740875
 Conc: 16.78 ng/ml



#41 AR-1268-1

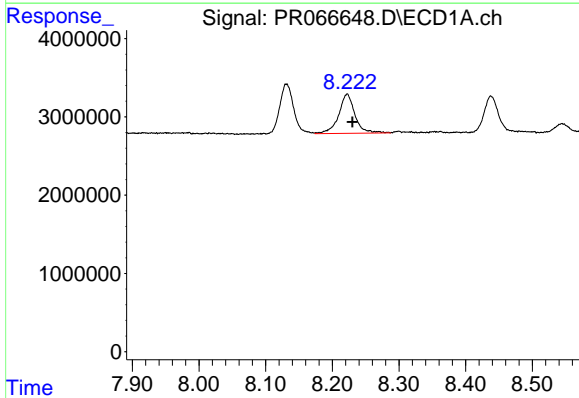
R.T.: 8.131 min
 Delta R.T.: -0.009 min
 Response: 9347018
 Conc: 23.98 ng/ml

Instrument :
 ECD_R
 ClientSampleId :
 MDL-SOIL-03-QT2-2024



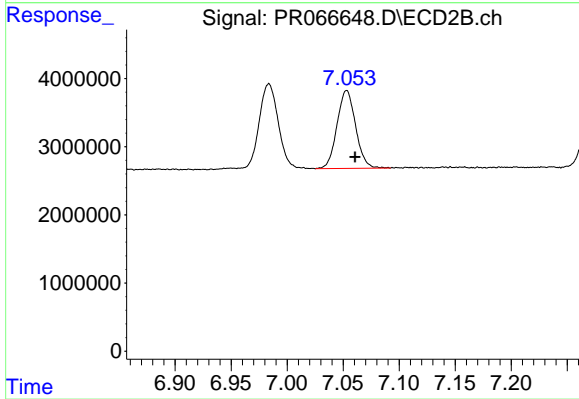
#41 AR-1268-1

R.T.: 6.984 min
 Delta R.T.: -0.008 min
 Response: 15076152
 Conc: 20.82 ng/ml



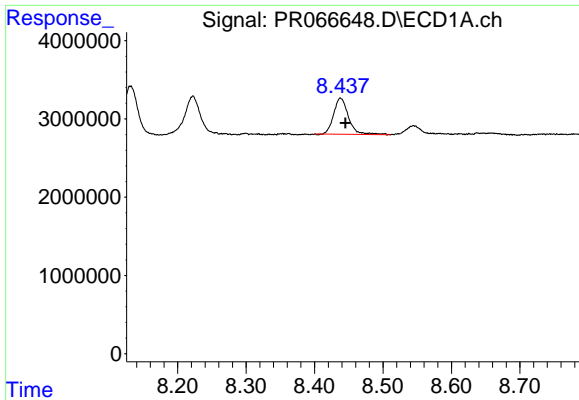
#42 AR-1268-2

R.T.: 8.222 min
 Delta R.T.: -0.008 min
 Response: 8456029
 Conc: 24.61 ng/ml



#42 AR-1268-2

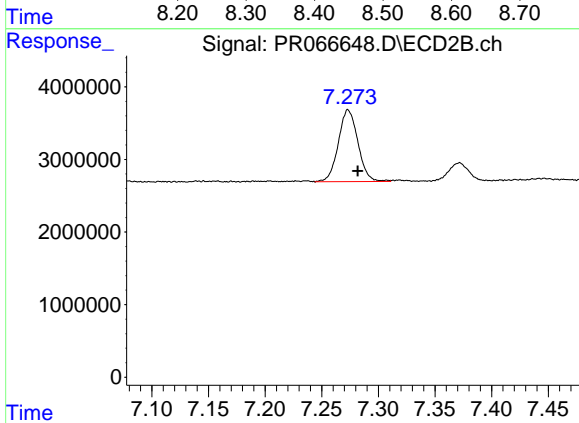
R.T.: 7.053 min
 Delta R.T.: -0.008 min
 Response: 13196417
 Conc: 20.56 ng/ml



#43 AR-1268-3

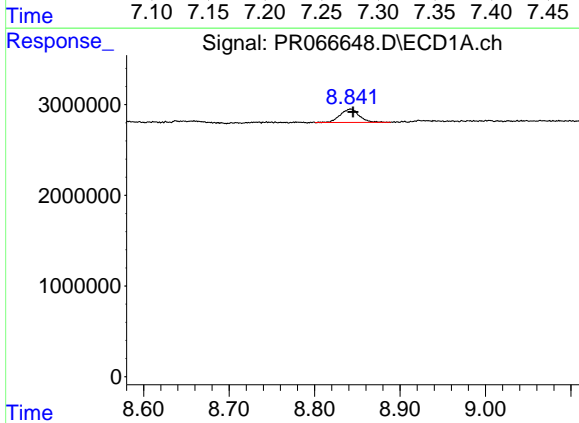
R.T.: 8.438 min
 Delta R.T.: -0.007 min
 Response: 6923158
 Conc: 22.55 ng/ml

Instrument :
 ECD_R
 ClientSampleId :
 MDL-SOIL-03-QT2-2024



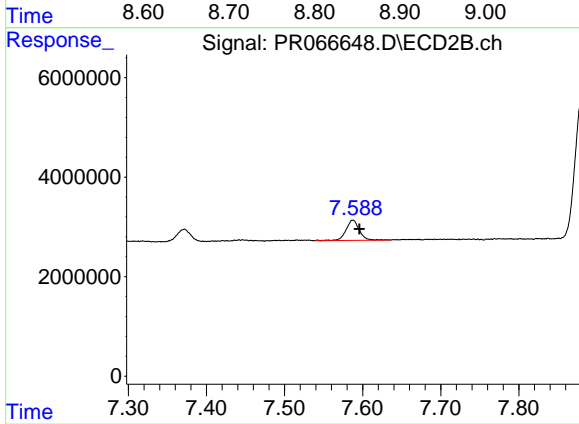
#43 AR-1268-3

R.T.: 7.273 min
 Delta R.T.: -0.008 min
 Response: 11897258
 Conc: 20.98 ng/ml



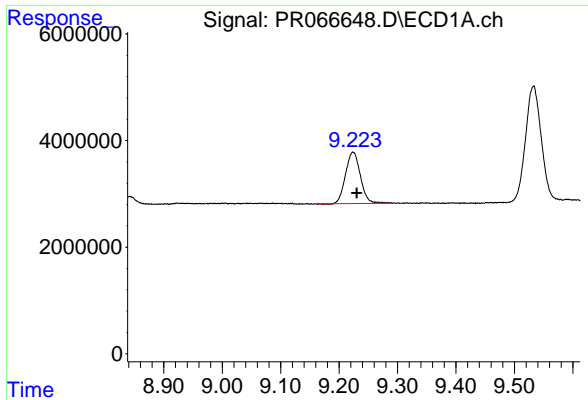
#44 AR-1268-4

R.T.: 8.842 min
 Delta R.T.: -0.003 min
 Response: 2282213
 Conc: 19.64 ng/ml



#44 AR-1268-4

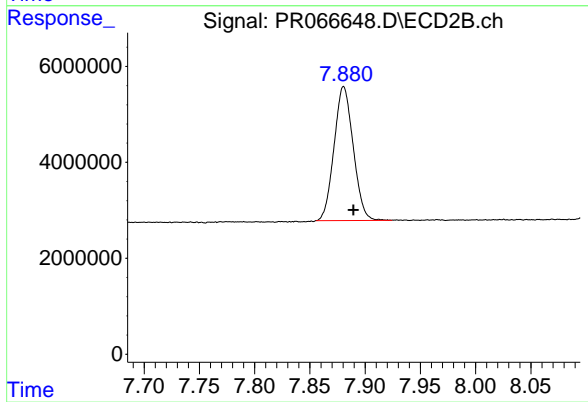
R.T.: 7.588 min
 Delta R.T.: -0.008 min
 Response: 4826979
 Conc: 19.78 ng/ml



#45 AR-1268-5

R.T.: 9.224 min
Delta R.T.: -0.006 min
Response: 17047969
Conc: 20.91 ng/ml

Instrument :
ECD_R
ClientSampleId :
MDL-SOIL-03-QT2-2024



#45 AR-1268-5

R.T.: 7.881 min
Delta R.T.: -0.009 min
Response: 33740151
Conc: 20.82 ng/ml