

Data Path : Z:\pestpcbsrv\HPCHEM1\ECD_R\Data\PR051123\
 Data File : PR061355.D
 Signal(s) : Signal #1: ECD1A.ch Signal #2: ECD2B.ch
 Acq On : 11 May 2023 12:25
 Operator : YP\AJ
 Sample : AR1254CCC400
 Misc :
 ALS Vial : 6 Sample Multiplier: 1

Instrument :
 ECD_R
 ClientSampleId :

Integration File signal 1: autoint1.e
 Integration File signal 2: autoint2.e
 Quant Time: May 11 21:23:07 2023
 Quant Method : Z:\pestpcbsrv\HPCHEM1\ECD_R\Method\PR050923CLP.M
 Quant Title : GC EXTRACTABLES
 QLast Update : Wed May 10 07:27:40 2023
 Response via : Initial Calibration
 Integrator: ChemStation

Volume Inj. : 1 µl
 Signal #1 Phase : ZB MR1 Signal #2 Phase: ZB MR2
 Signal #1 Info : 30Mx0.32mmx 0.5µm Signal #2 Info : 30M x 0.32mm x 0.25µm

Compound	RT#1	RT#2	Resp#1	Resp#2	ng/ml	ng/ml

System Monitoring Compounds						
1) SA Tetrachlo...	3.696	2.970	58548127	67394927	20.907	22.554
2) SA Decachlor...	9.637	8.274	67214408	144.1E6	48.639	44.866
Target Compounds						
3) L1 AR-1016-1	4.925	4.099	1047891	1641908	12.838	15.766
4) L1 AR-1016-2	4.949	4.118	1441541	1335510	11.927	9.022
5) L1 AR-1016-3	5.014	4.299	751772	1034405	9.929	13.083 #
6) L1 AR-1016-4	5.113	4.349	1124512	30820917	18.426	507.425 #
7) L1 AR-1016-5	5.433	4.568	13845128	18554652	240.115	224.023
8) L2 AR-1221-1	0.000	3.194	0	220797	N.D.	5.684 #
9) L2 AR-1221-2	4.011	3.276	825096	1153520	34.876	42.053
10) L2 AR-1221-3	4.085	3.362	442226	683001	5.623	7.649 #
11) L3 AR-1232-1	4.085	3.362	442226	683001	6.962	9.505 #
12) L3 AR-1232-2	4.640	4.118	949814	1335510	32.561	20.138 #
13) L3 AR-1232-3	4.949	4.299	1441541	1034405	26.027	28.954
14) L3 AR-1232-4	5.113	4.390	1124512	9486959	41.032	312.724 #
15) L3 AR-1232-5	5.219	4.568	24569495	18554652	1231.361	519.492 #
16) L4 AR-1242-1	4.925	4.099	1047891	1641908	14.836	18.533
17) L4 AR-1242-2	4.949	4.118	1441541	1335510	13.671	10.619
18) L4 AR-1242-3	5.014	4.299	751772	1034405	11.396	15.069 #
19) L4 AR-1242-4	5.113	4.390	1124512	9486959	21.238	145.957 #
20) L4 AR-1242-5	5.910	4.941	12277865	74926869	237.952	887.416 #
21) L5 AR-1248-1	4.925	4.099	1047891	1641908	19.409	24.034
22) L5 AR-1248-2	5.219	4.349	24569495	30820917	327.230	318.700
23) L5 AR-1248-3	5.433	4.390	13845128	9486959	157.483	95.643 #
24) L5 AR-1248-4	5.866	4.568	19411054	18554652	208.975	153.453 #
25) L5 AR-1248-5	5.910	4.984	12277865	9337329	137.417	77.465 #
26) L6 AR-1254-1	5.838	4.941	40670645	74926869	419.986	406.472
27) L6 AR-1254-2	6.075	5.101	61334429	64579700	417.861	407.843
28) L6 AR-1254-3	6.468	5.528	61603397	110.2E6	411.376	413.925
29) L6 AR-1254-4	6.780	5.774	43474818	69719248	422.134	414.666
30) L6 AR-1254-5	7.237	6.223	45415595	101.6E6	424.341	412.817
31) L7 AR-1260-1	6.649	5.670	25786440	53110547	249.705	311.437
32) L7 AR-1260-2	6.932	5.873	26687809	44138491	226.742	210.967
33) L7 AR-1260-3	7.300	6.033	5893190	46271094	71.030	222.819 #
34) L7 AR-1260-4	7.547	6.545	17408886	5356264	187.380	31.687 #
35) L7 AR-1260-5	7.905	6.809	5719996	12328256	32.338	30.408
36) L8 AR-1262-1	7.300	6.295	5893190	8238290	42.362	31.152 #
37) L8 AR-1262-2	7.905	6.809	5719996	12328256	25.327	24.912 #
38) L8 AR-1262-3	8.222	7.114	6519443	352248	42.382	2.026 #
39) L8 AR-1262-4	0.000	7.181	0	11891260	N.D.	33.011 #
40) L8 AR-1262-5	8.930	7.726	630741	804959	8.567	4.620 #
41) L9 AR-1268-1	8.222	7.114	6519443	352248	32.314	0.849 #

Data Path : Z:\pestpcbsrv\HPCHEM1\ECD_R\Data\PR051123\
 Data File : PR061355.D
 Signal(s) : Signal #1: ECD1A.ch Signal #2: ECD2B.ch
 Acq On : 11 May 2023 12:25
 Operator : YP\AJ
 Sample : AR1254CCC400
 Misc :
 ALS Vial : 6 Sample Multiplier: 1

Instrument :
 ECD_R
 ClientSampleId :

Integration File signal 1: autoint1.e
 Integration File signal 2: autoint2.e
 Quant Time: May 11 21:23:07 2023
 Quant Method : Z:\pestpcbsrv\HPCHEM1\ECD_R\Method\PR050923CLP.M
 Quant Title : GC EXTRACTABLES
 QLast Update : Wed May 10 07:27:40 2023
 Response via : Initial Calibration
 Integrator: ChemStation

Volume Inj. : 1 µl
 Signal #1 Phase : ZB MR1 Signal #2 Phase: ZB MR2
 Signal #1 Info : 30Mx0.32mmx 0.5µm Signal #2 Info : 30M x 0.32mm x 0.25µm

	Compound	RT#1	RT#2	Resp#1	Resp#2	ng/ml	ng/ml
42)	L9 AR-1268-2	8.368f	7.181	169612	11891260	0.981	31.074 #
43)	L9 AR-1268-3	0.000	7.417	0	126913	N.D.	0.380 #
44)	L9 AR-1268-4	8.930	7.726	630741	804959	10.197	5.506 #
45)	L9 AR-1268-5	9.322	8.022	551443	1292159	1.185	1.200

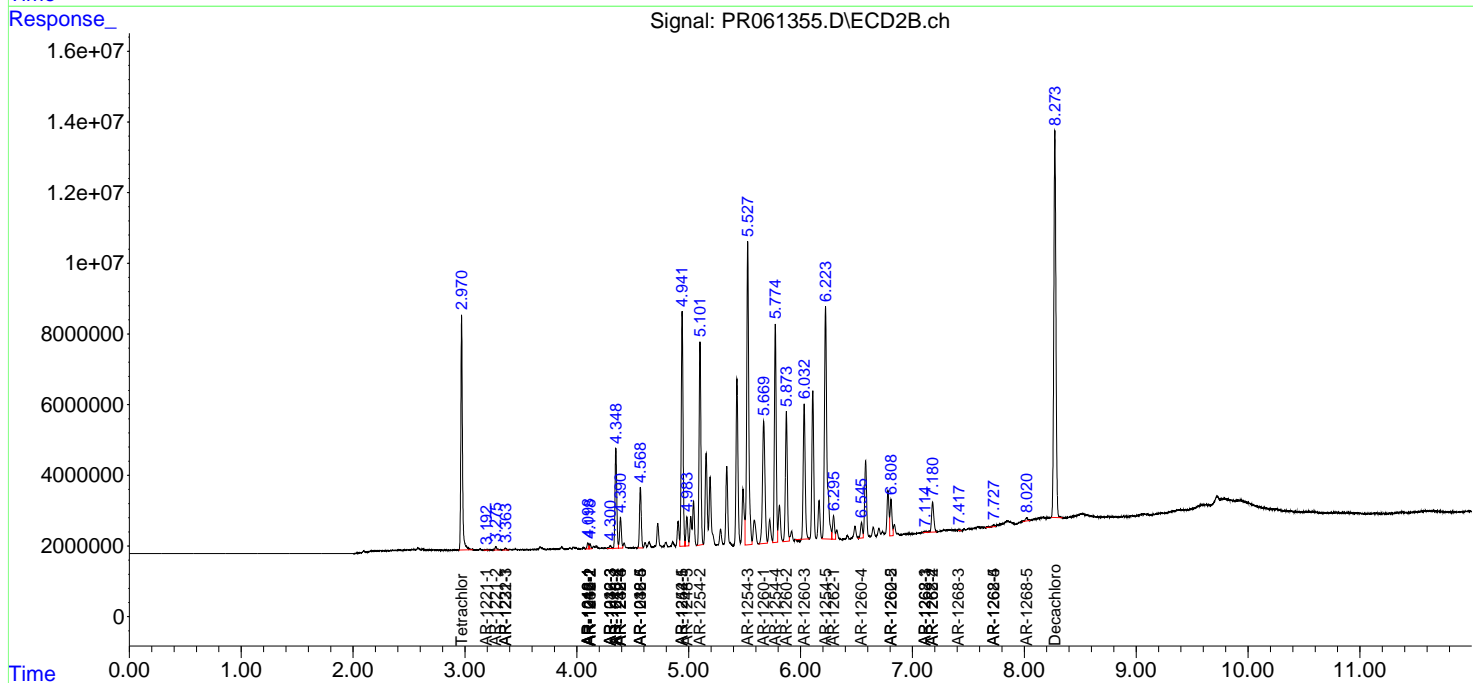
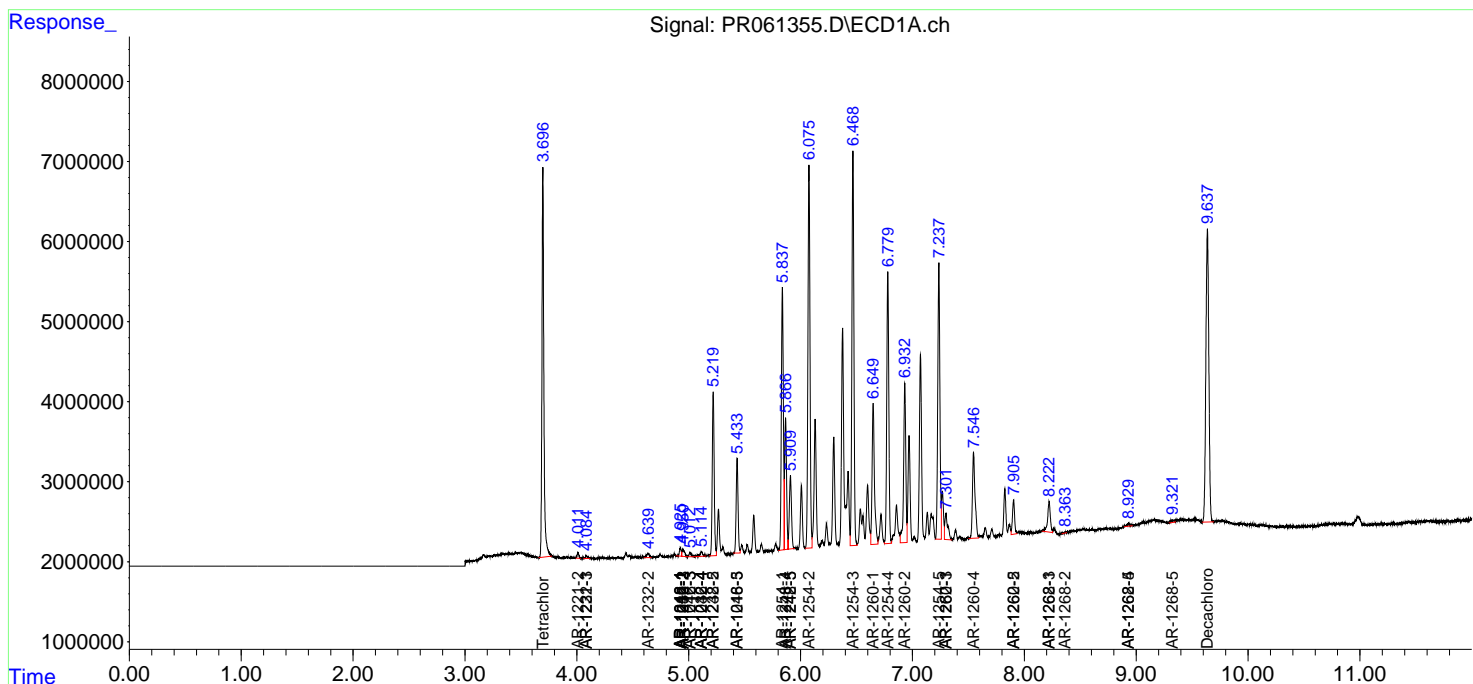
(f)=RT Delta > 1/2 Window (#)=Amounts differ by > 25% (m)=manual int.

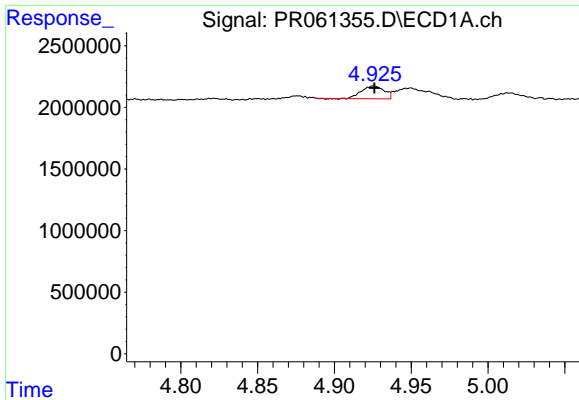
Data Path : Z:\pestpcbsrv\HPCHEM1\ECD_R\Data\PR051123\
 Data File : PR061355.D
 Signal(s) : Signal #1: ECD1A.ch Signal #2: ECD2B.ch
 Acq On : 11 May 2023 12:25
 Operator : YP\AJ
 Sample : AR1254CCC400
 Misc :
 ALS Vial : 6 Sample Multiplier: 1

Instrument :
 ECD_R
 ClientSampleId :

Integration File signal 1: autoint1.e
 Integration File signal 2: autoint2.e
 Quant Time: May 11 21:23:07 2023
 Quant Method : Z:\pestpcbsrv\HPCHEM1\ECD_R\Method\PR050923CLP.M
 Quant Title : GC EXTRACTABLES
 QLast Update : Wed May 10 07:27:40 2023
 Response via : Initial Calibration
 Integrator: ChemStation

Volume Inj. : 1 µl
 Signal #1 Phase : ZB MR1 Signal #2 Phase: ZB MR2
 Signal #1 Info : 30Mx0.32mmx 0.5µm Signal #2 Info : 30M x 0.32mm x 0.25µm

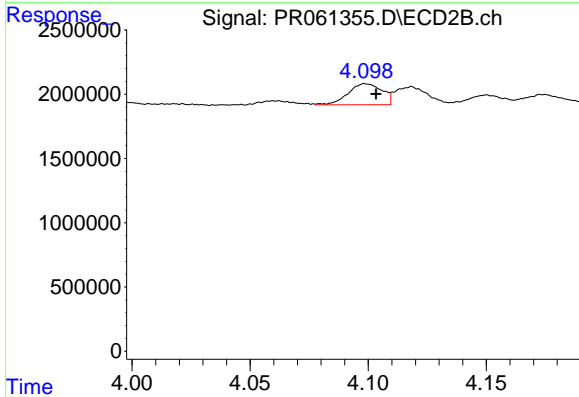




#3 AR-1016-1

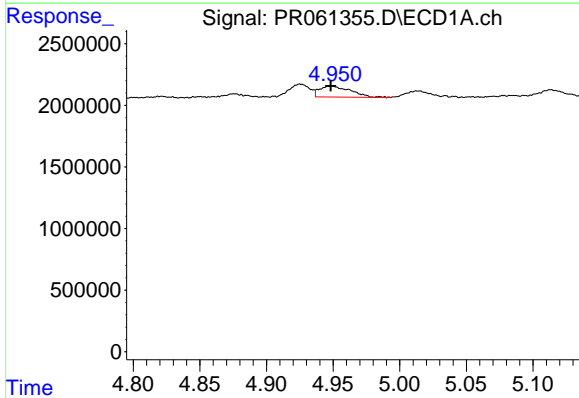
R.T.: 4.925 min
 Delta R.T.: 0.000 min
 Response: 1047891
 Conc: 12.84 ng/ml

Instrument :
 ECD_R
 ClientSampleId :



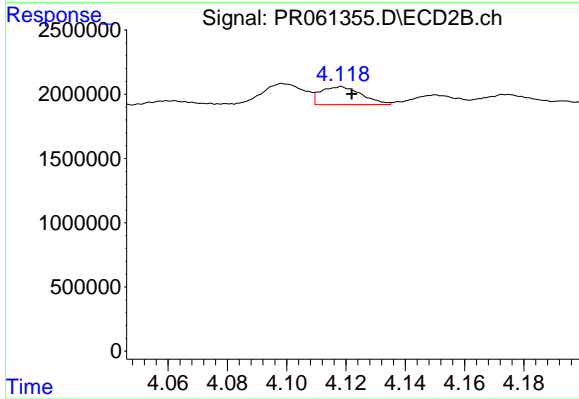
#3 AR-1016-1

R.T.: 4.099 min
 Delta R.T.: -0.004 min
 Response: 1641908
 Conc: 15.77 ng/ml



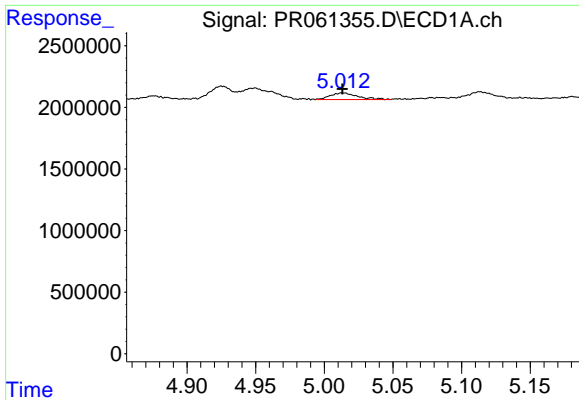
#4 AR-1016-2

R.T.: 4.949 min
 Delta R.T.: 0.000 min
 Response: 1441541
 Conc: 11.93 ng/ml



#4 AR-1016-2

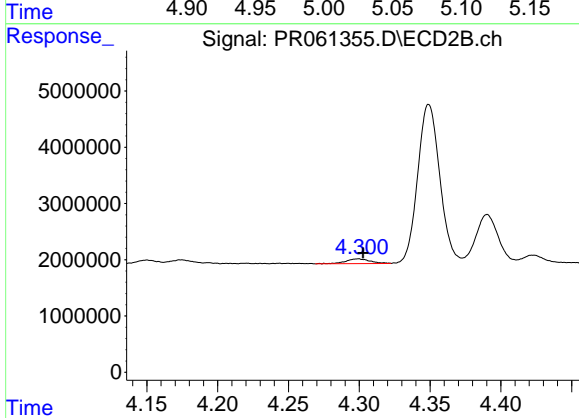
R.T.: 4.118 min
 Delta R.T.: -0.004 min
 Response: 1335510
 Conc: 9.02 ng/ml



#5 AR-1016-3

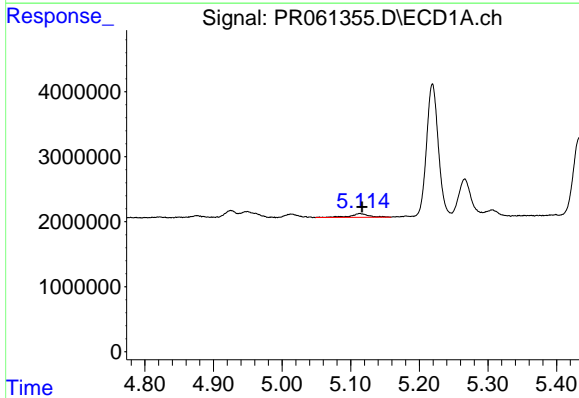
R.T.: 5.014 min
 Delta R.T.: 0.000 min
 Response: 751772
 Conc: 9.93 ng/ml

Instrument :
 ECD_R
 ClientSampleId :



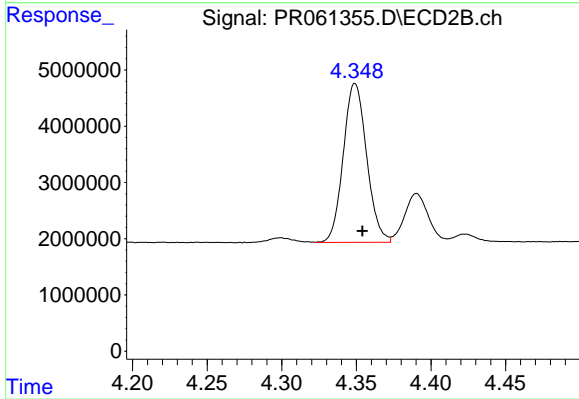
#5 AR-1016-3

R.T.: 4.299 min
 Delta R.T.: -0.004 min
 Response: 1034405
 Conc: 13.08 ng/ml



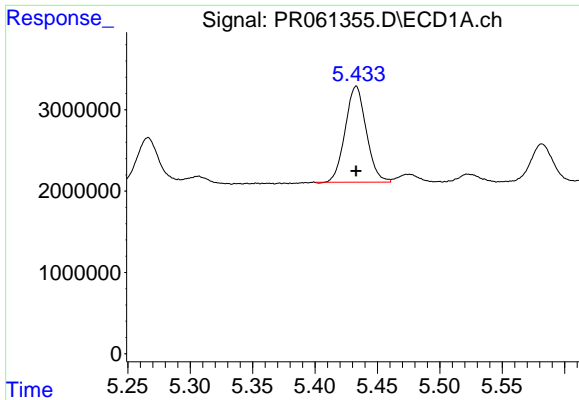
#6 AR-1016-4

R.T.: 5.113 min
 Delta R.T.: -0.003 min
 Response: 1124512
 Conc: 18.43 ng/ml



#6 AR-1016-4

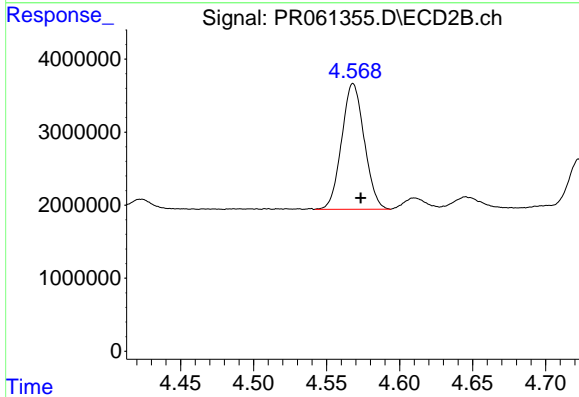
R.T.: 4.349 min
 Delta R.T.: -0.005 min
 Response: 30820917
 Conc: 507.42 ng/ml



#7 AR-1016-5

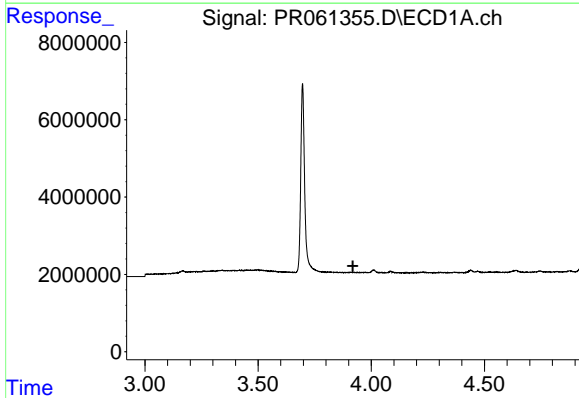
R.T.: 5.433 min
 Delta R.T.: 0.000 min
 Response: 13845128
 Conc: 240.12 ng/ml

Instrument :
 ECD_R
 ClientSampleId :



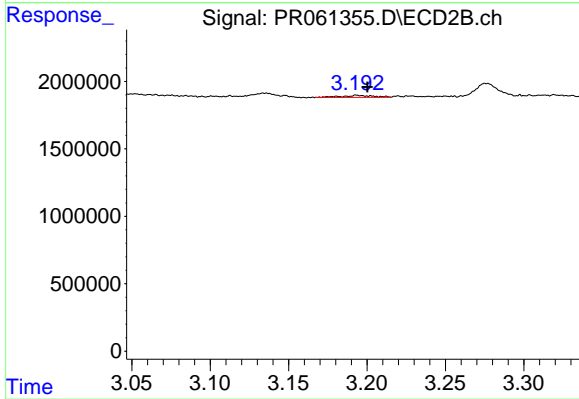
#7 AR-1016-5

R.T.: 4.568 min
 Delta R.T.: -0.005 min
 Response: 18554652
 Conc: 224.02 ng/ml



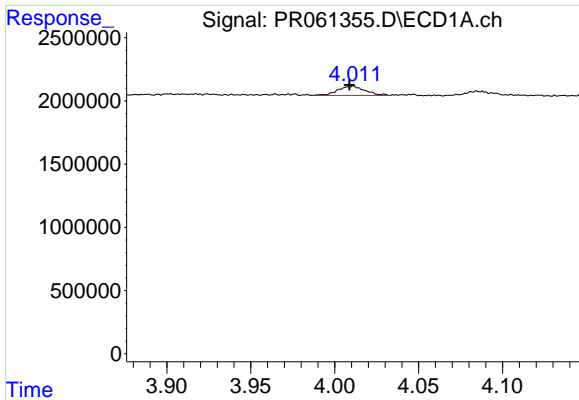
#8 AR-1221-1

R.T.: 0.000 min
 Exp R.T. : 3.919 min
 Response: 0
 Conc: N.D.



#8 AR-1221-1

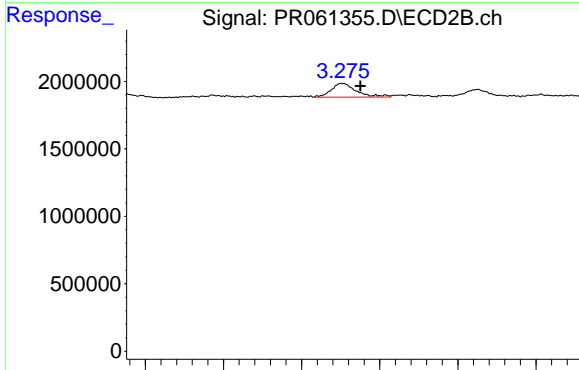
R.T.: 3.194 min
 Delta R.T.: -0.007 min
 Response: 220797
 Conc: 5.68 ng/ml



#9 AR-1221-2

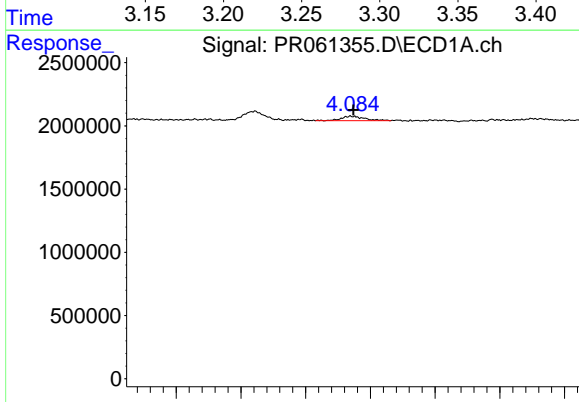
R.T.: 4.011 min
 Delta R.T.: 0.002 min
 Response: 825096
 Conc: 34.88 ng/ml

Instrument :
 ECD_R
 ClientSampleId :



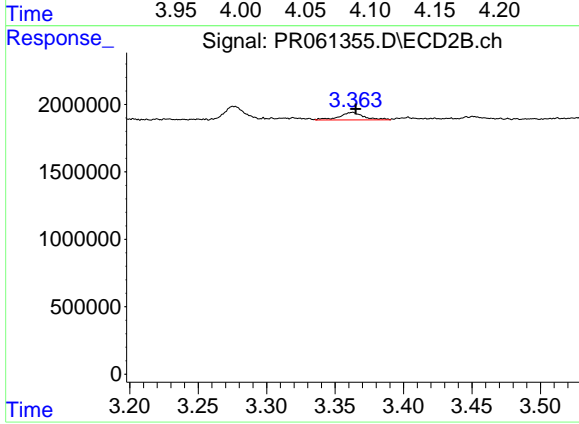
#9 AR-1221-2

R.T.: 3.276 min
 Delta R.T.: -0.011 min
 Response: 1153520
 Conc: 42.05 ng/ml



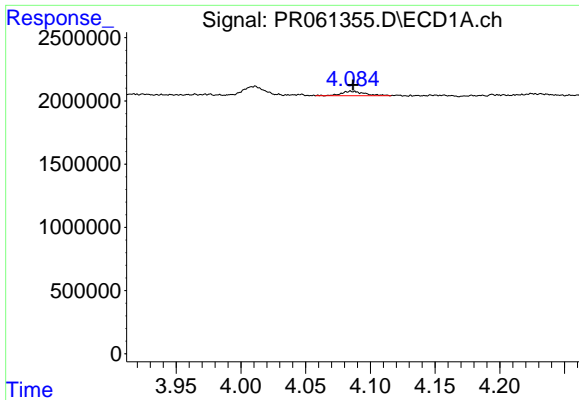
#10 AR-1221-3

R.T.: 4.085 min
 Delta R.T.: -0.002 min
 Response: 442226
 Conc: 5.62 ng/ml



#10 AR-1221-3

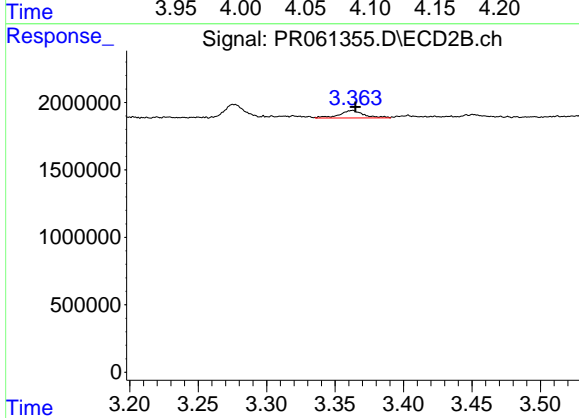
R.T.: 3.362 min
 Delta R.T.: -0.003 min
 Response: 683001
 Conc: 7.65 ng/ml



#11 AR-1232-1

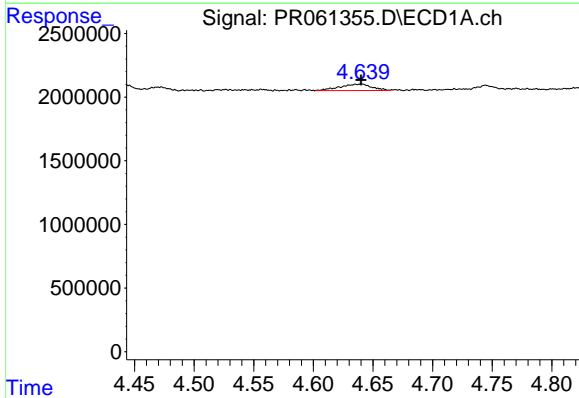
R.T.: 4.085 min
 Delta R.T.: -0.001 min
 Response: 442226
 Conc: 6.96 ng/ml

Instrument :
 ECD_R
 ClientSampleId :



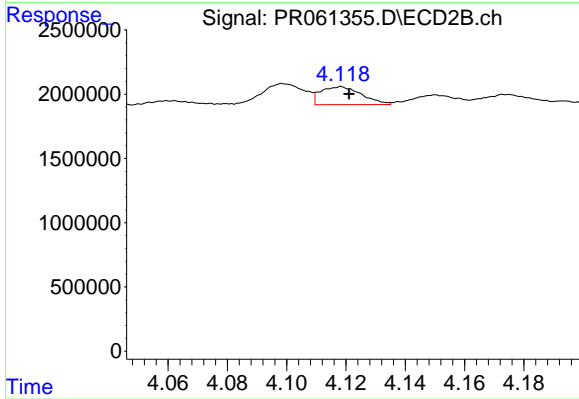
#11 AR-1232-1

R.T.: 3.362 min
 Delta R.T.: -0.002 min
 Response: 683001
 Conc: 9.51 ng/ml



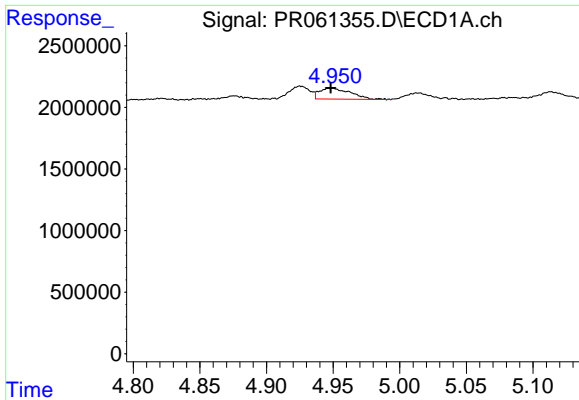
#12 AR-1232-2

R.T.: 4.640 min
 Delta R.T.: 0.000 min
 Response: 949814
 Conc: 32.56 ng/ml



#12 AR-1232-2

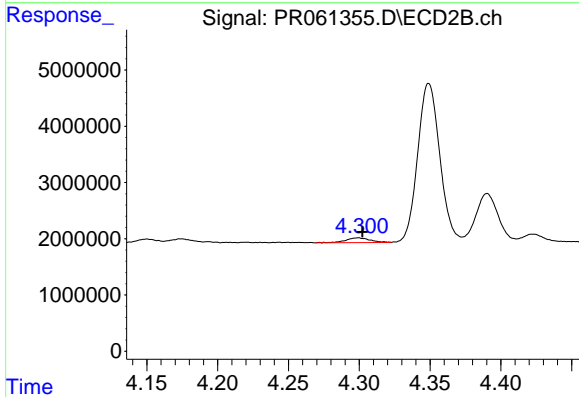
R.T.: 4.118 min
 Delta R.T.: -0.003 min
 Response: 1335510
 Conc: 20.14 ng/ml



#13 AR-1232-3

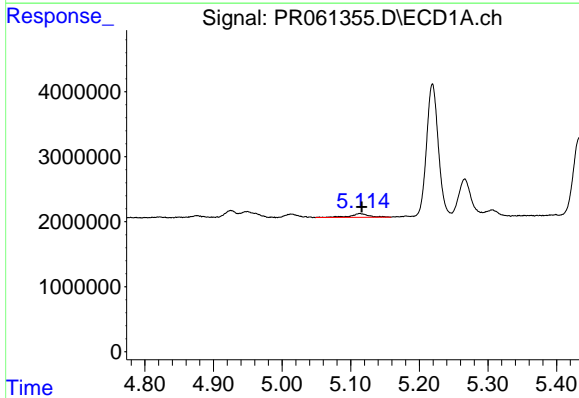
R.T.: 4.949 min
 Delta R.T.: 0.000 min
 Response: 1441541
 Conc: 26.03 ng/ml

Instrument :
 ECD_R
 ClientSampleId :



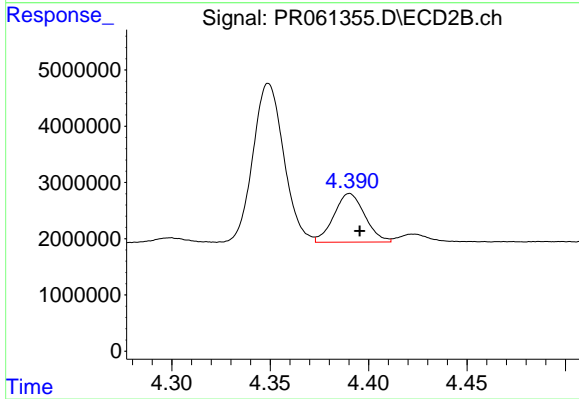
#13 AR-1232-3

R.T.: 4.299 min
 Delta R.T.: -0.003 min
 Response: 1034405
 Conc: 28.95 ng/ml



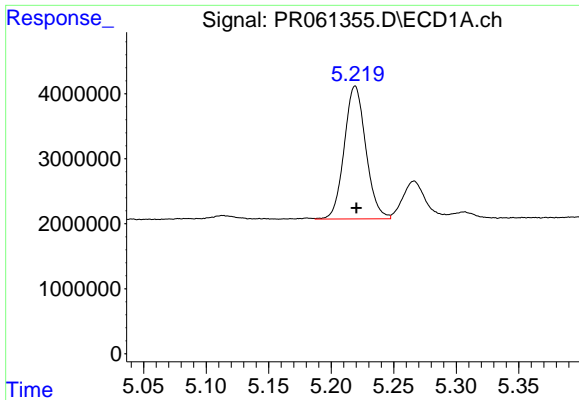
#14 AR-1232-4

R.T.: 5.113 min
 Delta R.T.: -0.003 min
 Response: 1124512
 Conc: 41.03 ng/ml



#14 AR-1232-4

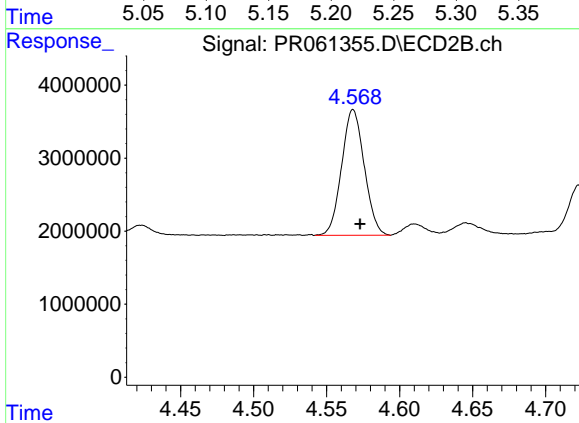
R.T.: 4.390 min
 Delta R.T.: -0.005 min
 Response: 9486959
 Conc: 312.72 ng/ml



#15 AR-1232-5

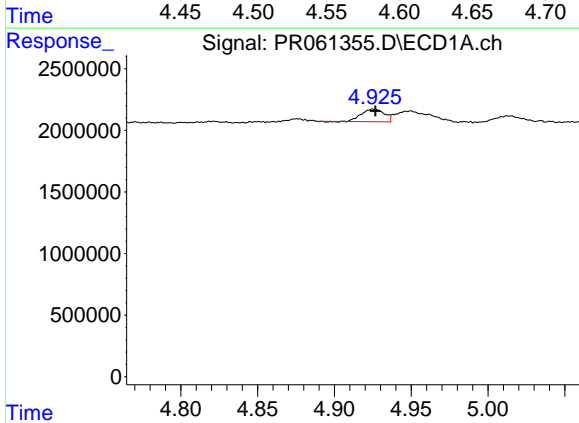
R.T.: 5.219 min
 Delta R.T.: -0.001 min
 Response: 24569495
 Conc: 1231.36 ng/ml

Instrument :
 ECD_R
 ClientSampleId :



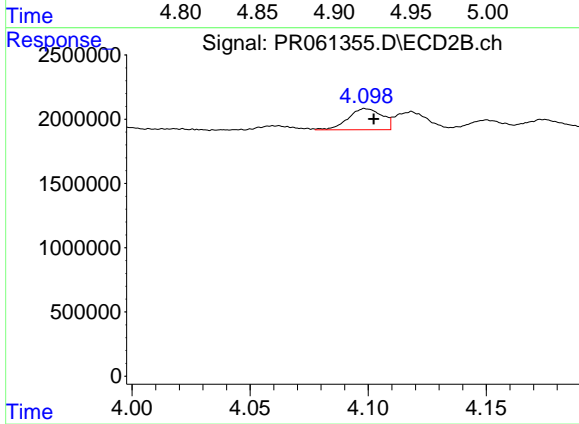
#15 AR-1232-5

R.T.: 4.568 min
 Delta R.T.: -0.005 min
 Response: 18554652
 Conc: 519.49 ng/ml



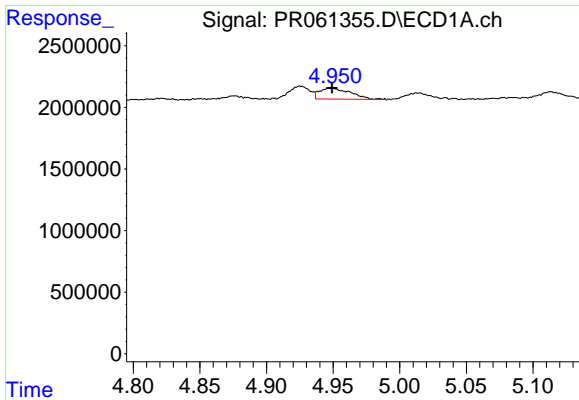
#16 AR-1242-1

R.T.: 4.925 min
 Delta R.T.: -0.001 min
 Response: 1047891
 Conc: 14.84 ng/ml



#16 AR-1242-1

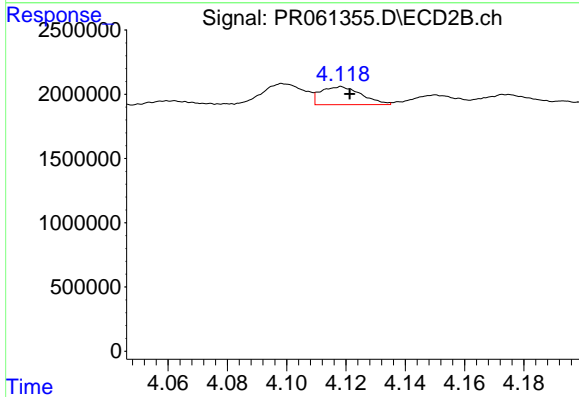
R.T.: 4.099 min
 Delta R.T.: -0.003 min
 Response: 1641908
 Conc: 18.53 ng/ml



#17 AR-1242-2

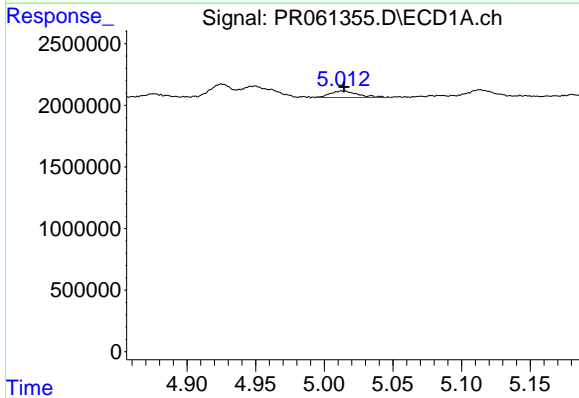
R.T.: 4.949 min
 Delta R.T.: 0.000 min
 Response: 1441541
 Conc: 13.67 ng/ml

Instrument :
 ECD_R
 ClientSampleId :



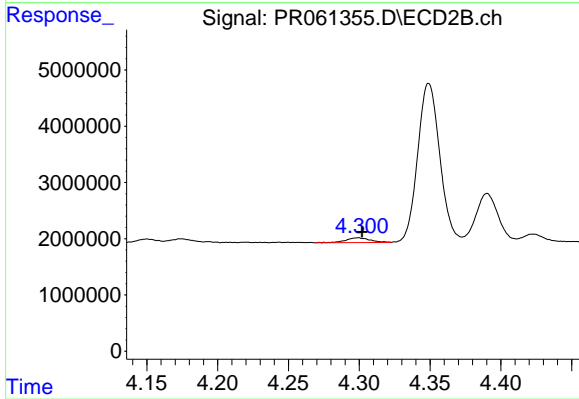
#17 AR-1242-2

R.T.: 4.118 min
 Delta R.T.: -0.003 min
 Response: 1335510
 Conc: 10.62 ng/ml



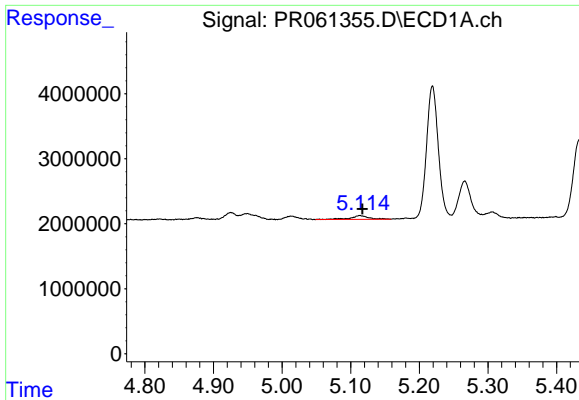
#18 AR-1242-3

R.T.: 5.014 min
 Delta R.T.: 0.000 min
 Response: 751772
 Conc: 11.40 ng/ml



#18 AR-1242-3

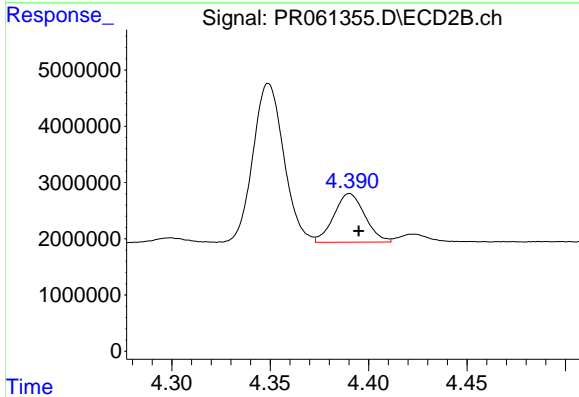
R.T.: 4.299 min
 Delta R.T.: -0.003 min
 Response: 1034405
 Conc: 15.07 ng/ml



#19 AR-1242-4

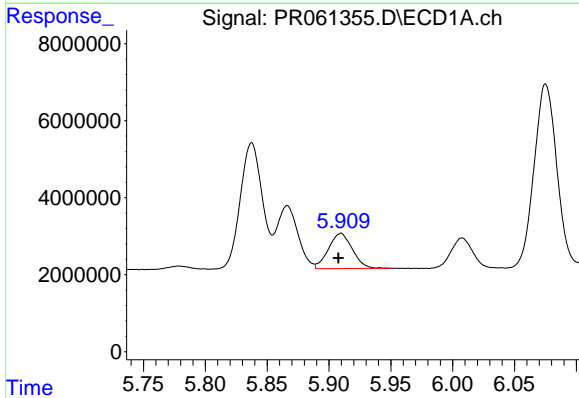
R.T.: 5.113 min
 Delta R.T.: -0.004 min
 Response: 1124512
 Conc: 21.24 ng/ml

Instrument :
 ECD_R
 ClientSampleId :



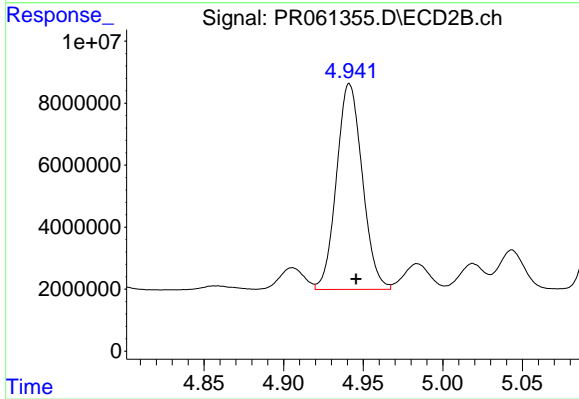
#19 AR-1242-4

R.T.: 4.390 min
 Delta R.T.: -0.005 min
 Response: 9486959
 Conc: 145.96 ng/ml



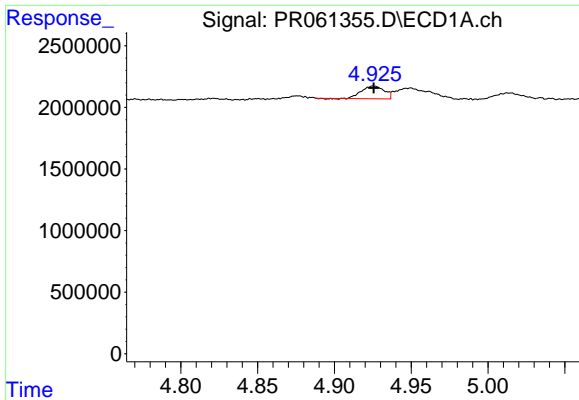
#20 AR-1242-5

R.T.: 5.910 min
 Delta R.T.: 0.002 min
 Response: 12277865
 Conc: 237.95 ng/ml



#20 AR-1242-5

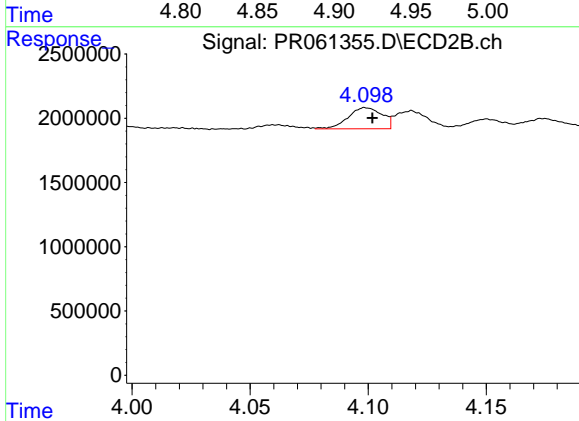
R.T.: 4.941 min
 Delta R.T.: -0.004 min
 Response: 74926869
 Conc: 887.42 ng/ml



#21 AR-1248-1

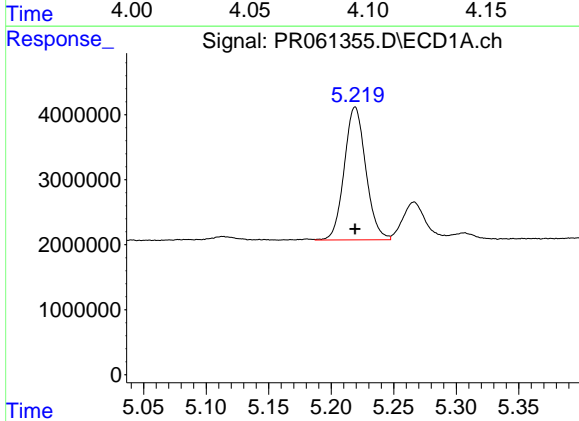
R.T.: 4.925 min
 Delta R.T.: 0.000 min
 Response: 1047891
 Conc: 19.41 ng/ml

Instrument :
 ECD_R
 ClientSampleId :



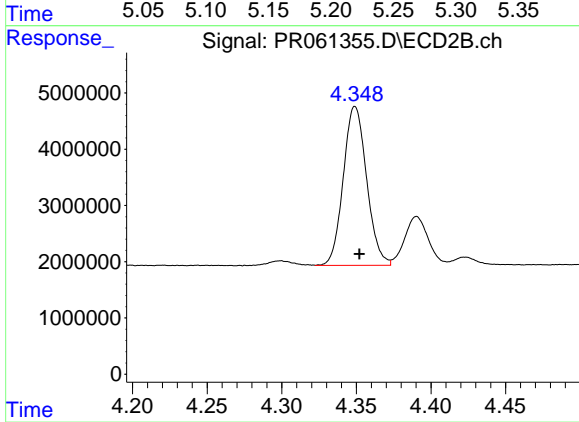
#21 AR-1248-1

R.T.: 4.099 min
 Delta R.T.: -0.003 min
 Response: 1641908
 Conc: 24.03 ng/ml



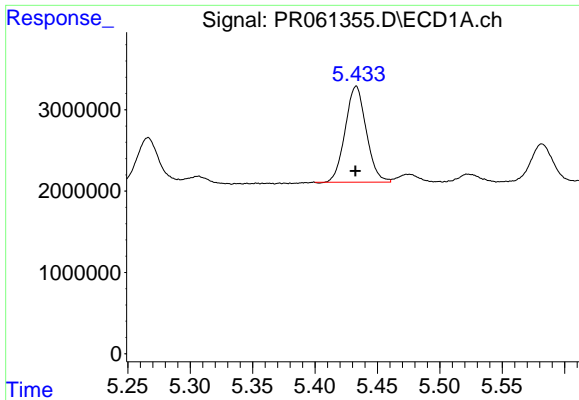
#22 AR-1248-2

R.T.: 5.219 min
 Delta R.T.: 0.000 min
 Response: 24569495
 Conc: 327.23 ng/ml



#22 AR-1248-2

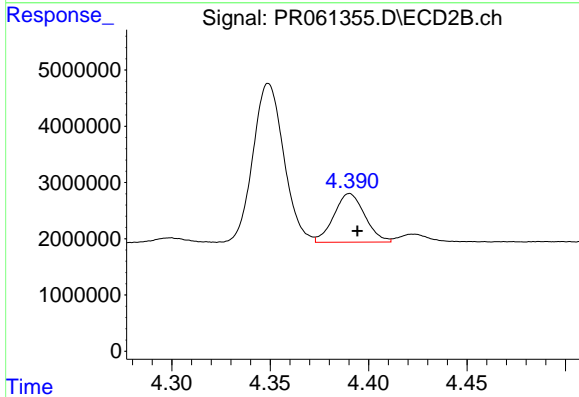
R.T.: 4.349 min
 Delta R.T.: -0.003 min
 Response: 30820917
 Conc: 318.70 ng/ml



#23 AR-1248-3

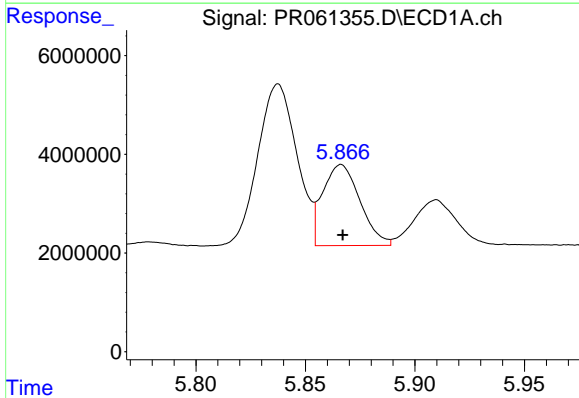
R.T.: 5.433 min
 Delta R.T.: 0.000 min
 Response: 13845128
 Conc: 157.48 ng/ml

Instrument :
 ECD_R
 ClientSampleId :



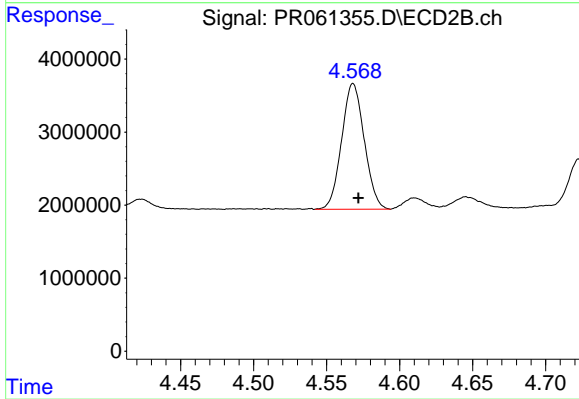
#23 AR-1248-3

R.T.: 4.390 min
 Delta R.T.: -0.004 min
 Response: 9486959
 Conc: 95.64 ng/ml



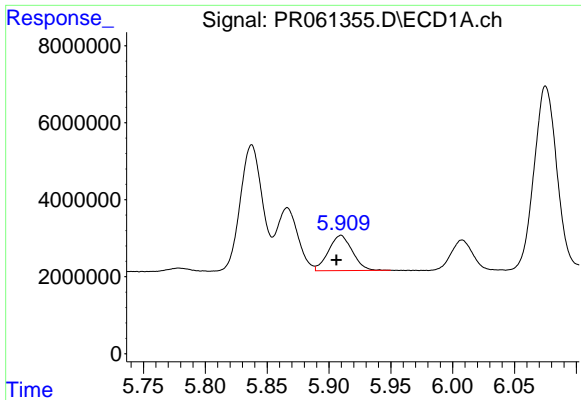
#24 AR-1248-4

R.T.: 5.866 min
 Delta R.T.: 0.000 min
 Response: 19411054
 Conc: 208.97 ng/ml



#24 AR-1248-4

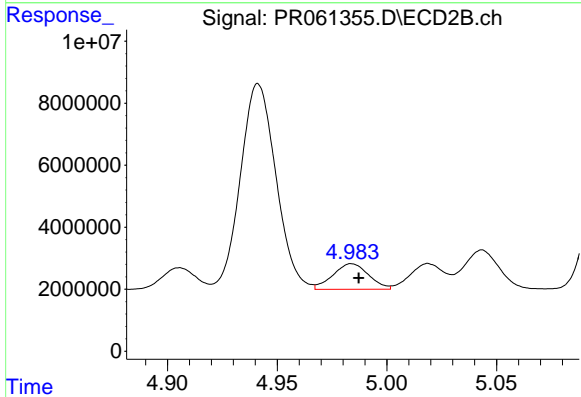
R.T.: 4.568 min
 Delta R.T.: -0.004 min
 Response: 18554652
 Conc: 153.45 ng/ml



#25 AR-1248-5

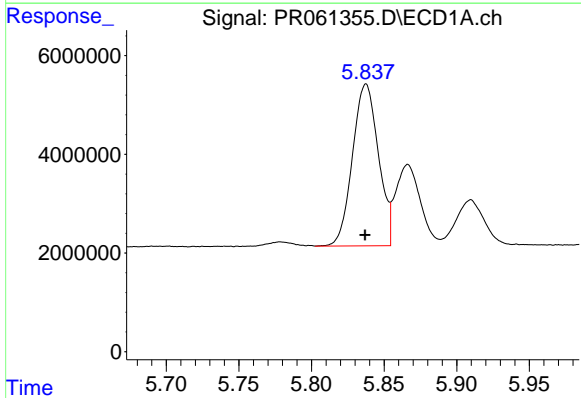
R.T.: 5.910 min
 Delta R.T.: 0.004 min
 Response: 12277865
 Conc: 137.42 ng/ml

Instrument :
 ECD_R
 ClientSampleId :



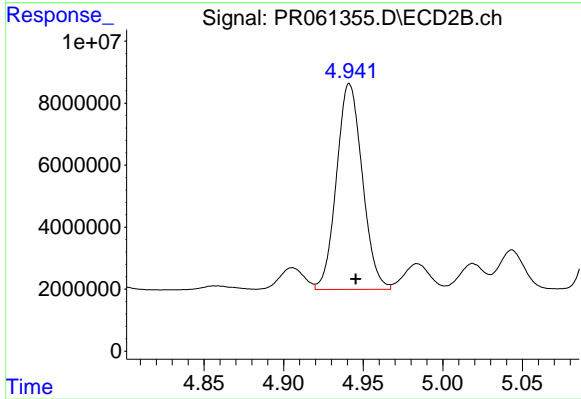
#25 AR-1248-5

R.T.: 4.984 min
 Delta R.T.: -0.003 min
 Response: 9337329
 Conc: 77.47 ng/ml



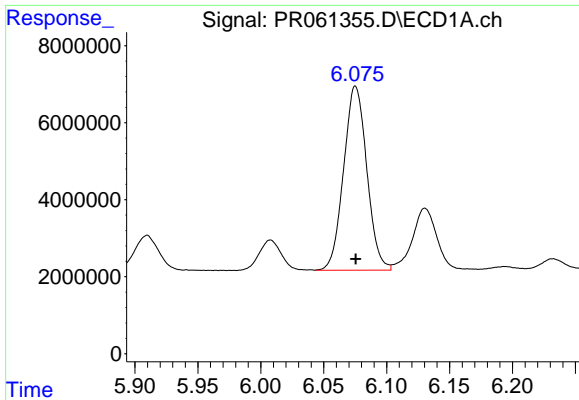
#26 AR-1254-1

R.T.: 5.838 min
 Delta R.T.: 0.000 min
 Response: 40670645
 Conc: 419.99 ng/ml



#26 AR-1254-1

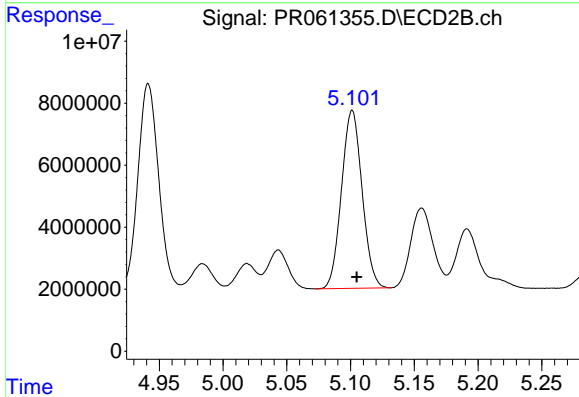
R.T.: 4.941 min
 Delta R.T.: -0.004 min
 Response: 74926869
 Conc: 406.47 ng/ml



#27 AR-1254-2

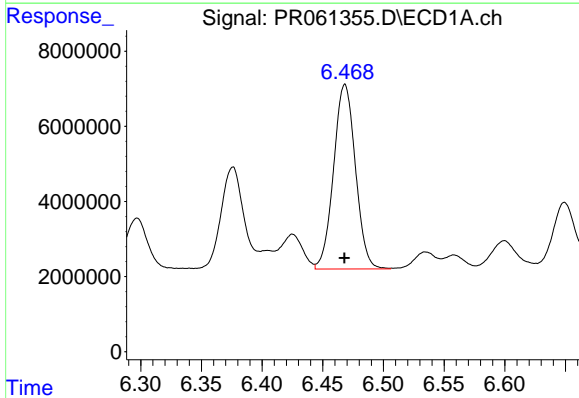
R.T.: 6.075 min
 Delta R.T.: 0.000 min
 Response: 61334429
 Conc: 417.86 ng/ml

Instrument :
 ECD_R
 ClientSampleId :



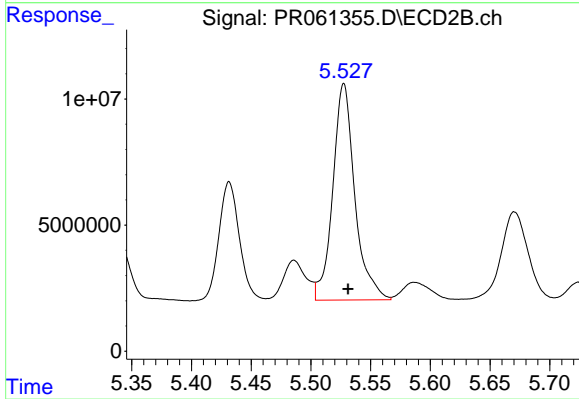
#27 AR-1254-2

R.T.: 5.101 min
 Delta R.T.: -0.004 min
 Response: 64579700
 Conc: 407.84 ng/ml



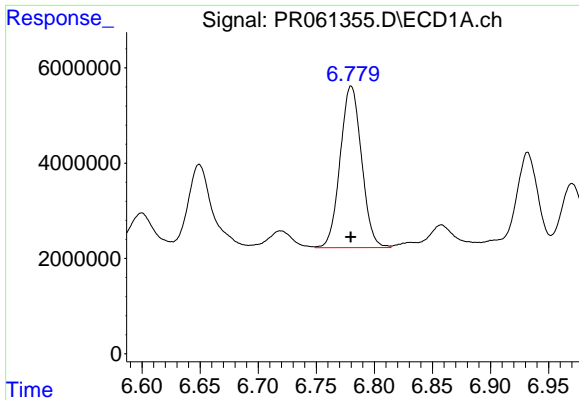
#28 AR-1254-3

R.T.: 6.468 min
 Delta R.T.: 0.000 min
 Response: 61603397
 Conc: 411.38 ng/ml



#28 AR-1254-3

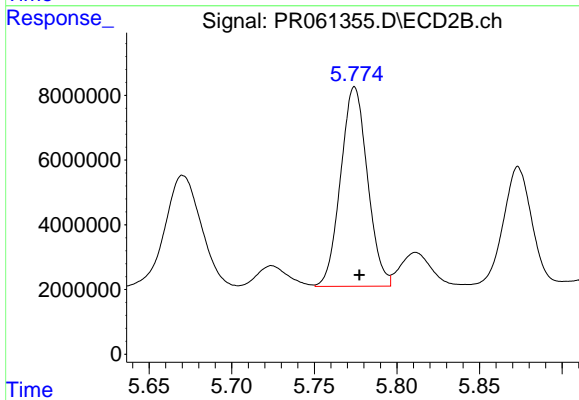
R.T.: 5.528 min
 Delta R.T.: -0.004 min
 Response: 110243000
 Conc: 413.92 ng/ml



#29 AR-1254-4

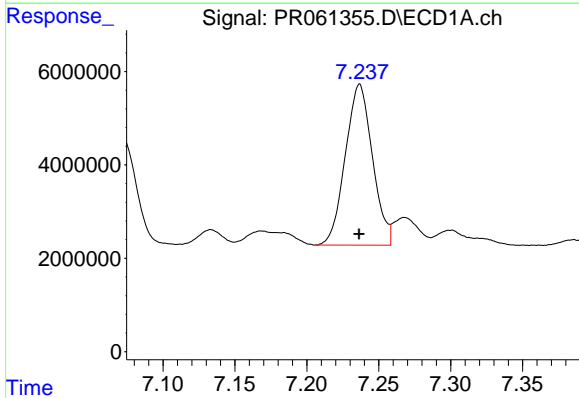
R.T.: 6.780 min
 Delta R.T.: 0.000 min
 Response: 43474818
 Conc: 422.13 ng/ml

Instrument :
 ECD_R
 ClientSampleId :



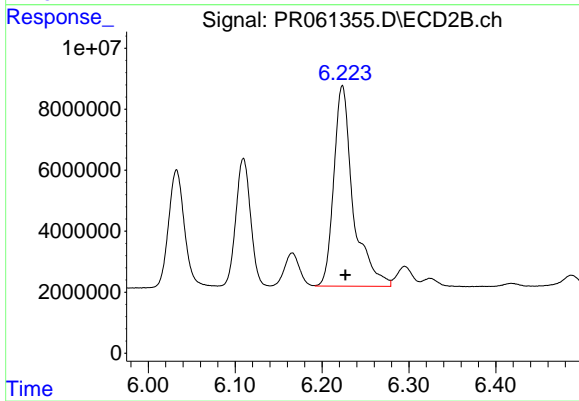
#29 AR-1254-4

R.T.: 5.774 min
 Delta R.T.: -0.003 min
 Response: 69719248
 Conc: 414.67 ng/ml



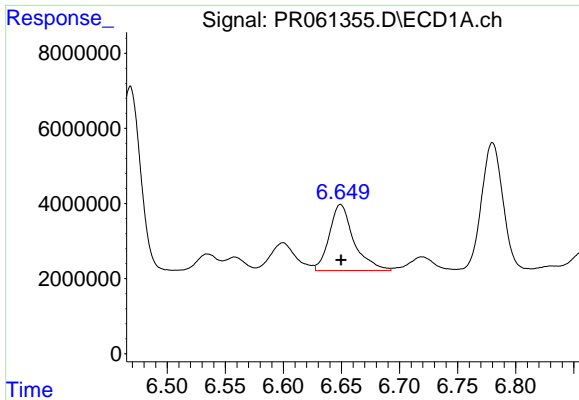
#30 AR-1254-5

R.T.: 7.237 min
 Delta R.T.: 0.000 min
 Response: 45415595
 Conc: 424.34 ng/ml



#30 AR-1254-5

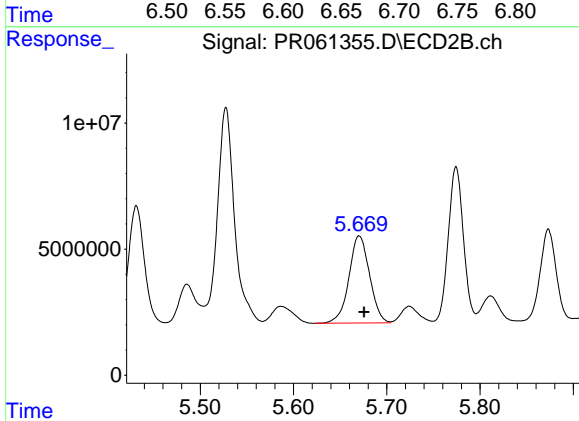
R.T.: 6.223 min
 Delta R.T.: -0.003 min
 Response: 101634365
 Conc: 412.82 ng/ml



#31 AR-1260-1

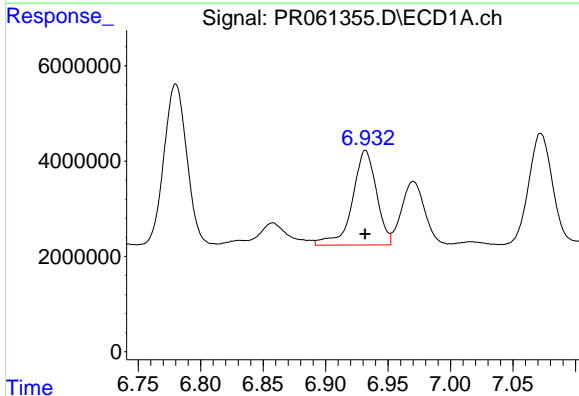
R.T.: 6.649 min
 Delta R.T.: 0.000 min
 Response: 25786440
 Conc: 249.70 ng/ml

Instrument :
 ECD_R
 ClientSampleId :



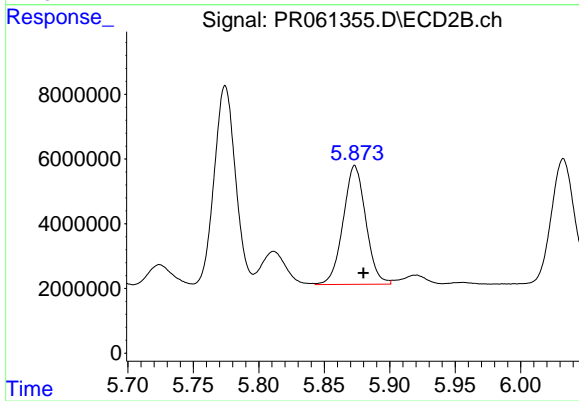
#31 AR-1260-1

R.T.: 5.670 min
 Delta R.T.: -0.005 min
 Response: 53110547
 Conc: 311.44 ng/ml



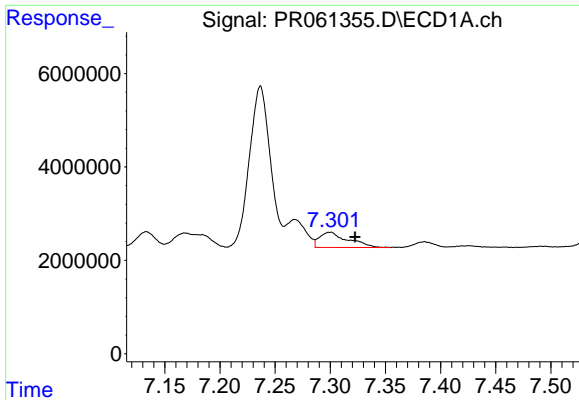
#32 AR-1260-2

R.T.: 6.932 min
 Delta R.T.: 0.000 min
 Response: 26687809
 Conc: 226.74 ng/ml



#32 AR-1260-2

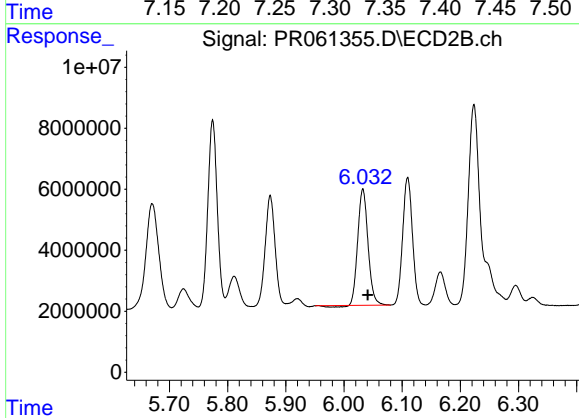
R.T.: 5.873 min
 Delta R.T.: -0.007 min
 Response: 44138491
 Conc: 210.97 ng/ml



#33 AR-1260-3

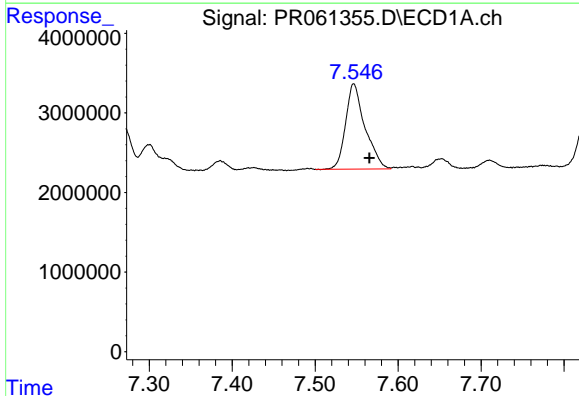
R.T.: 7.300 min
 Delta R.T.: -0.022 min
 Response: 5893190
 Conc: 71.03 ng/ml

Instrument :
 ECD_R
 ClientSampleId :



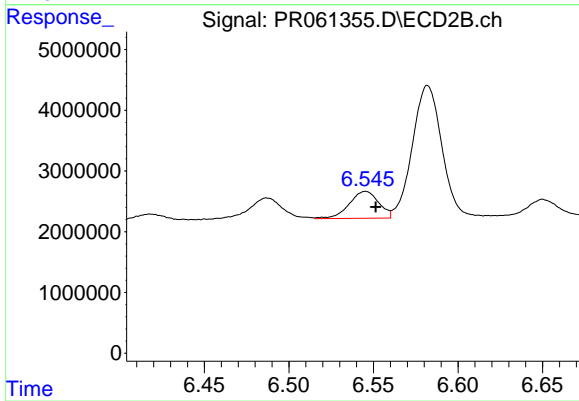
#33 AR-1260-3

R.T.: 6.033 min
 Delta R.T.: -0.008 min
 Response: 46271094
 Conc: 222.82 ng/ml



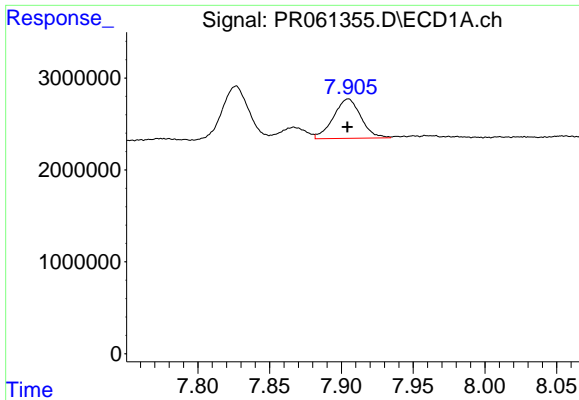
#34 AR-1260-4

R.T.: 7.547 min
 Delta R.T.: -0.019 min
 Response: 17408886
 Conc: 187.38 ng/ml



#34 AR-1260-4

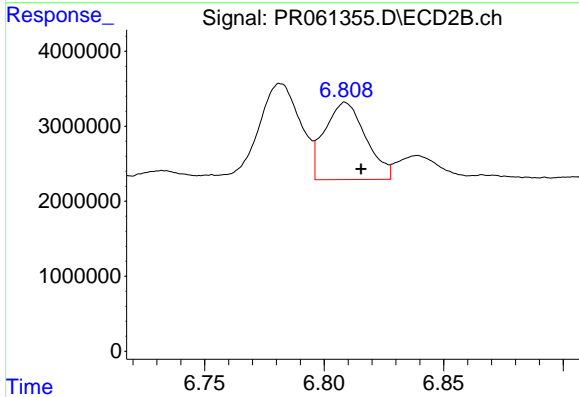
R.T.: 6.545 min
 Delta R.T.: -0.006 min
 Response: 5356264
 Conc: 31.69 ng/ml



#35 AR-1260-5

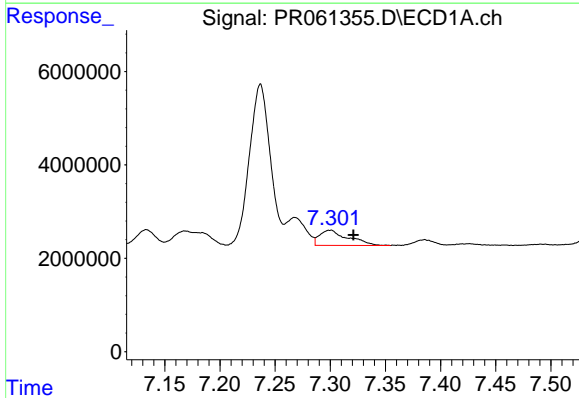
R.T.: 7.905 min
 Delta R.T.: 0.000 min
 Response: 5719996
 Conc: 32.34 ng/ml

Instrument :
 ECD_R
 ClientSampleId :



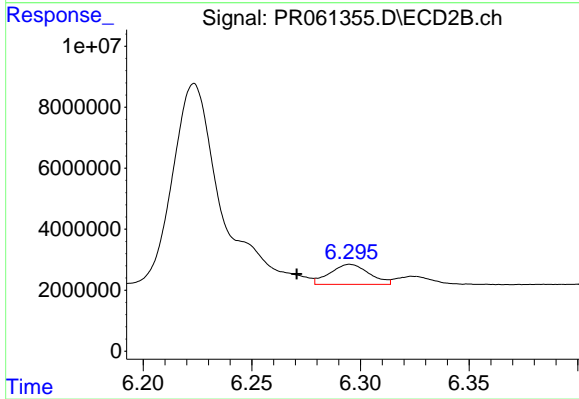
#35 AR-1260-5

R.T.: 6.809 min
 Delta R.T.: -0.006 min
 Response: 12328256
 Conc: 30.41 ng/ml



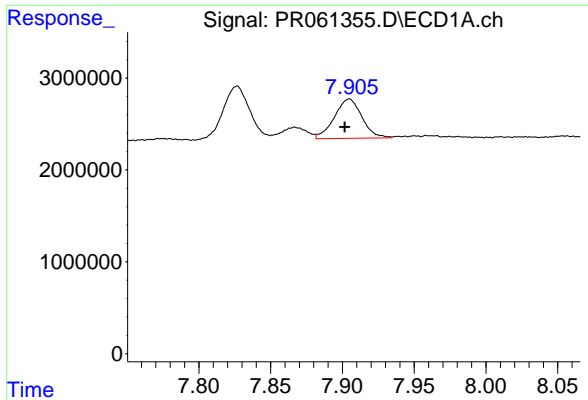
#36 AR-1262-1

R.T.: 7.300 min
 Delta R.T.: -0.021 min
 Response: 5893190
 Conc: 42.36 ng/ml



#36 AR-1262-1

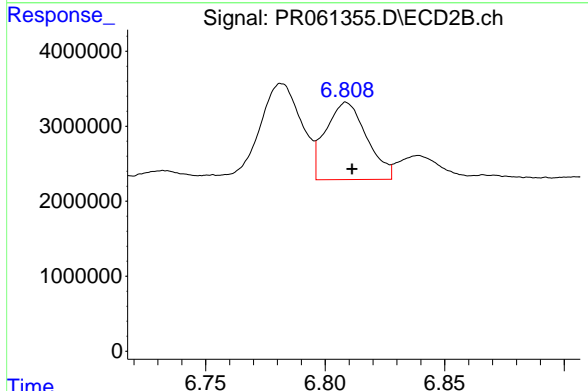
R.T.: 6.295 min
 Delta R.T.: 0.025 min
 Response: 8238290
 Conc: 31.15 ng/ml



#37 AR-1262-2

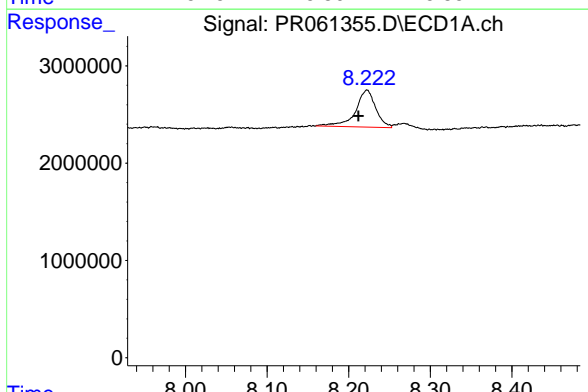
R.T.: 7.905 min
 Delta R.T.: 0.003 min
 Response: 5719996
 Conc: 25.33 ng/ml

Instrument :
 ECD_R
 ClientSampleId :



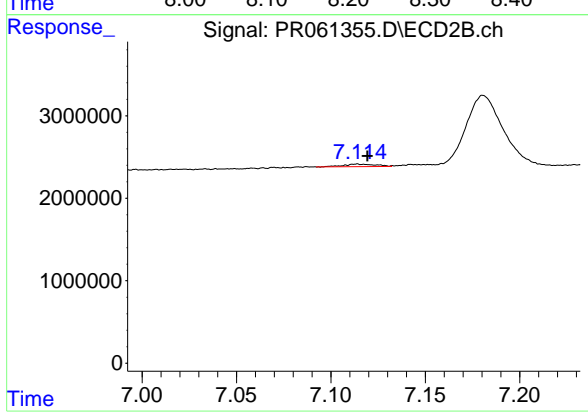
#37 AR-1262-2

R.T.: 6.809 min
 Delta R.T.: -0.002 min
 Response: 12328256
 Conc: 24.91 ng/ml



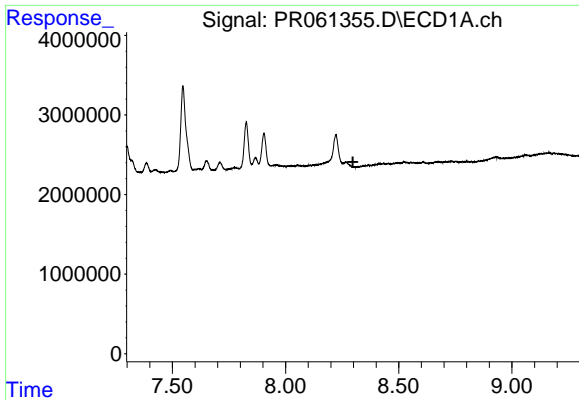
#38 AR-1262-3

R.T.: 8.222 min
 Delta R.T.: 0.010 min
 Response: 6519443
 Conc: 42.38 ng/ml



#38 AR-1262-3

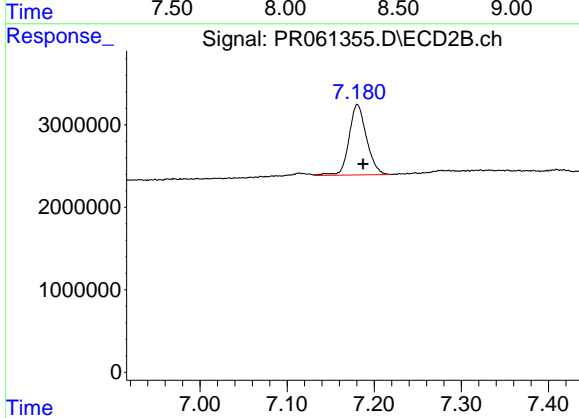
R.T.: 7.114 min
 Delta R.T.: -0.005 min
 Response: 352248
 Conc: 2.03 ng/ml



#39 AR-1262-4

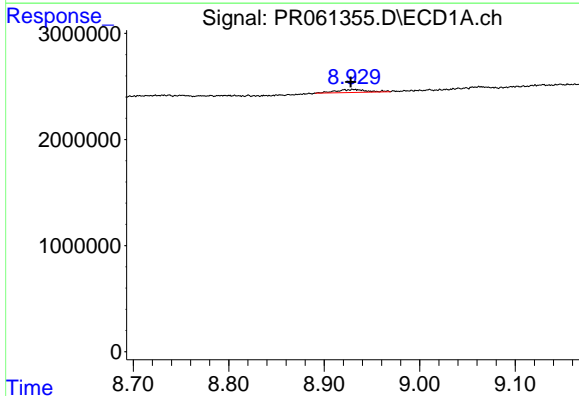
R.T.: 0.000 min
 Exp R.T.: 8.298 min
 Response: 0
 Conc: N.D.

Instrument :
 ECD_R
 ClientSampleId :



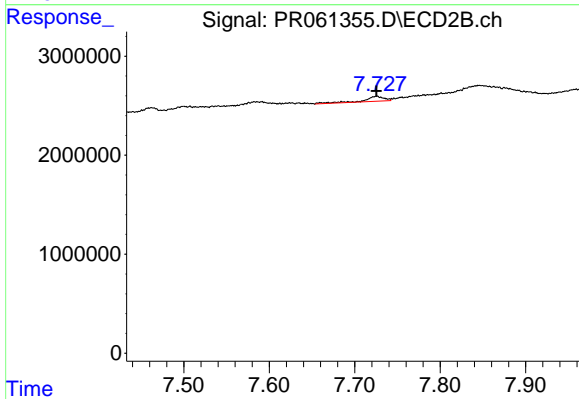
#39 AR-1262-4

R.T.: 7.181 min
 Delta R.T.: -0.006 min
 Response: 11891260
 Conc: 33.01 ng/ml



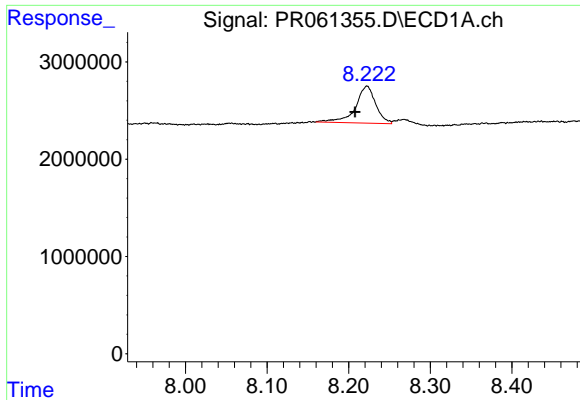
#40 AR-1262-5

R.T.: 8.930 min
 Delta R.T.: 0.003 min
 Response: 630741
 Conc: 8.57 ng/ml



#40 AR-1262-5

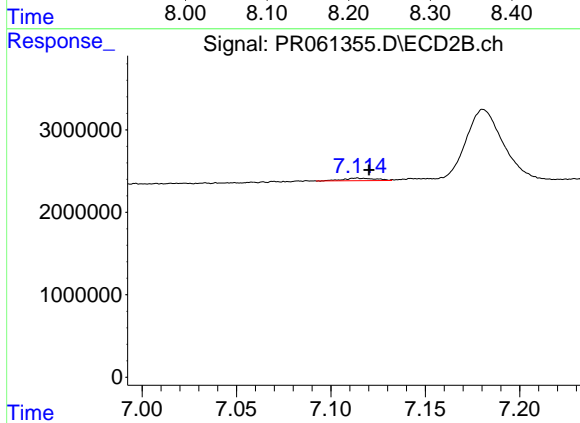
R.T.: 7.726 min
 Delta R.T.: 0.000 min
 Response: 804959
 Conc: 4.62 ng/ml



#41 AR-1268-1

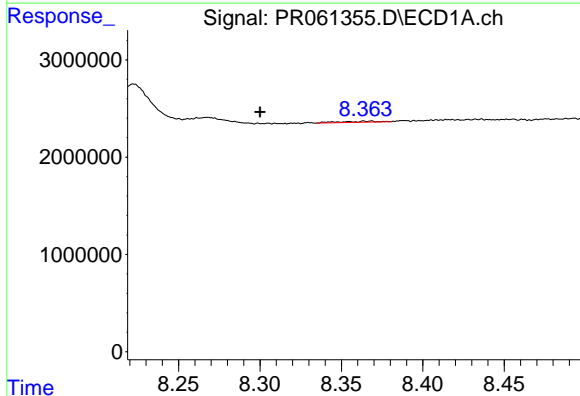
R.T.: 8.222 min
 Delta R.T.: 0.014 min
 Response: 6519443
 Conc: 32.31 ng/ml

Instrument :
 ECD_R
 ClientSampleId :



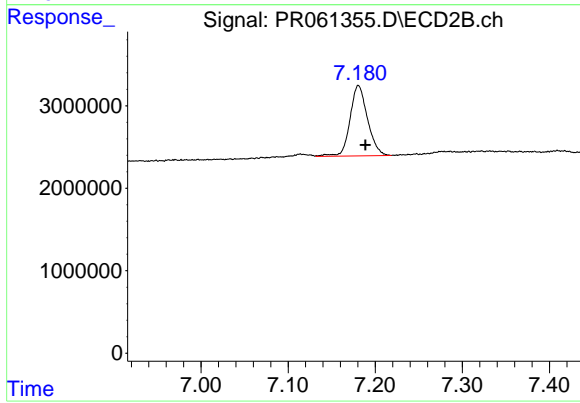
#41 AR-1268-1

R.T.: 7.114 min
 Delta R.T.: -0.006 min
 Response: 352248
 Conc: 0.85 ng/ml



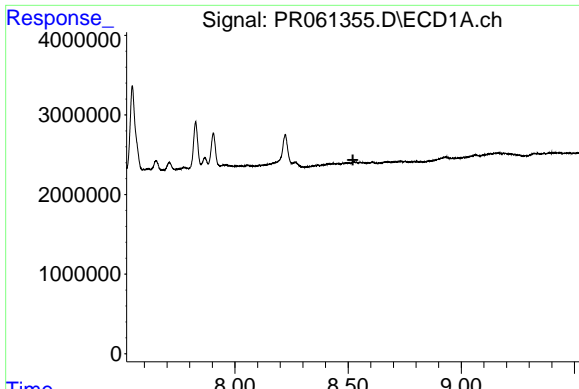
#42 AR-1268-2

R.T.: 8.368 min
 Delta R.T.: 0.068 min
 Response: 169612
 Conc: 0.98 ng/ml



#42 AR-1268-2

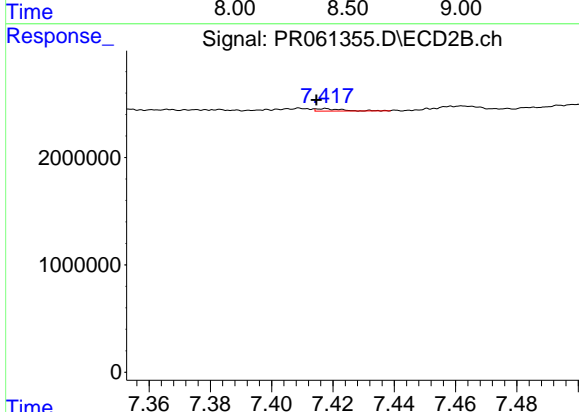
R.T.: 7.181 min
 Delta R.T.: -0.008 min
 Response: 11891260
 Conc: 31.07 ng/ml



#43 AR-1268-3

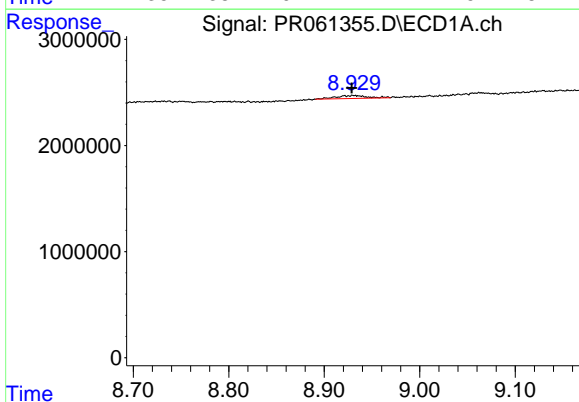
R.T.: 0.000 min
 Exp R.T.: 8.521 min
 Response: 0
 Conc: N.D.

Instrument :
 ECD_R
 ClientSampleId :



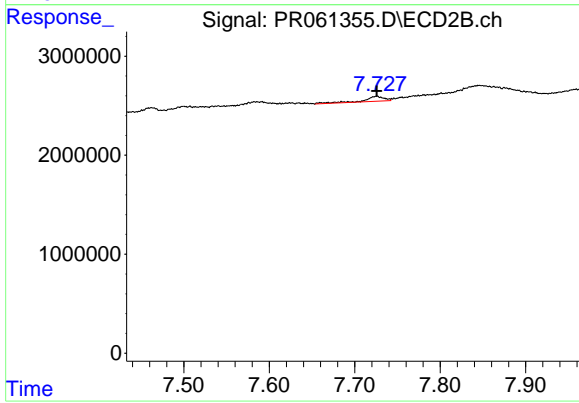
#43 AR-1268-3

R.T.: 7.417 min
 Delta R.T.: 0.002 min
 Response: 126913
 Conc: 0.38 ng/ml



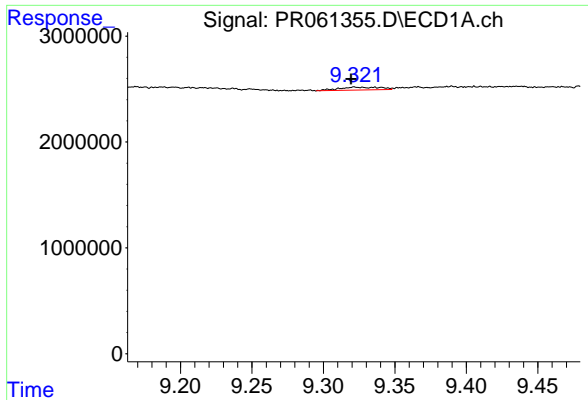
#44 AR-1268-4

R.T.: 8.930 min
 Delta R.T.: 0.002 min
 Response: 630741
 Conc: 10.20 ng/ml



#44 AR-1268-4

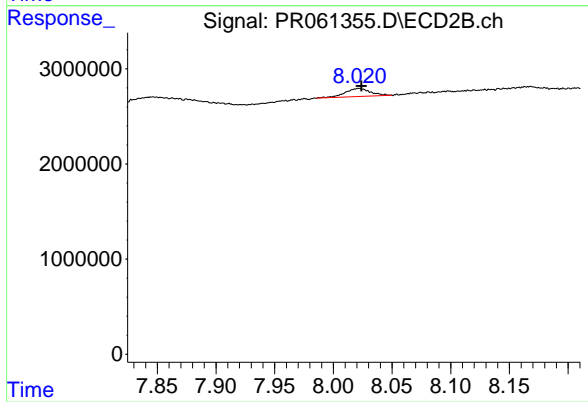
R.T.: 7.726 min
 Delta R.T.: 0.000 min
 Response: 804959
 Conc: 5.51 ng/ml



#45 AR-1268-5

R.T.: 9.322 min
 Delta R.T.: 0.002 min
 Response: 551443
 Conc: 1.19 ng/ml

Instrument :
 ECD_R
 ClientSampleId :



#45 AR-1268-5

R.T.: 8.022 min
 Delta R.T.: -0.002 min
 Response: 1292159
 Conc: 1.20 ng/ml