

Data Path : Z:\pestpcbsrv\HPCHEM1\ECD\_R\Data\PR051123\  
 Data File : PR061376.D  
 Signal(s) : Signal #1: ECD1A.ch Signal #2: ECD2B.ch  
 Acq On : 11 May 2023 18:57  
 Operator : YP\AJ  
 Sample : 02694-20  
 Misc :  
 ALS Vial : 27 Sample Multiplier: 1

Instrument :  
 ECD\_R  
 ClientSampleId :

Integration File signal 1: autoint1.e  
 Integration File signal 2: autoint2.e  
 Quant Time: May 11 21:47:09 2023  
 Quant Method : Z:\pestpcbsrv\HPCHEM1\ECD\_R\Method\PR050923CLP.M  
 Quant Title : GC EXTRACTABLES  
 QLast Update : Wed May 10 07:27:40 2023  
 Response via : Initial Calibration  
 Integrator: ChemStation

Volume Inj. : 1 µl  
 Signal #1 Phase : ZB MR1 Signal #2 Phase: ZB MR2  
 Signal #1 Info : 30Mx0.32mmx 0.5µm Signal #2 Info : 30M x 0.32mm x 0.25µm

Compound	RT#1	RT#2	Resp#1	Resp#2	ng/ml	ng/ml
-----						
System Monitoring Compounds						
1) SA Tetrachlo...	3.697	2.970	56360979	61830670	20.126	20.692
2) SA Decachlor...	9.634	8.270	55098083	121.7E6	39.871	37.884
Target Compounds						
3) L1 AR-1016-1	4.875f	4.098	857491	54137	10.506	0.520 #
4) L1 AR-1016-2	0.000	4.126	0	259830	N.D.	1.755 #
5) L1 AR-1016-3	5.028	4.304	709514	126387	9.371	1.599 #
6) L1 AR-1016-4	0.000	4.352	0	84307	N.D.	1.388 #
7) L1 AR-1016-5	0.000	4.567	0	385184	N.D.	4.651 #
8) L2 AR-1221-1	0.000	3.188	0	202786	N.D.	5.220 #
9) L2 AR-1221-2	4.013	3.277	1161118	872254	49.080	31.799 #
10) L2 AR-1221-3	0.000	3.353	0	178607	N.D.	2.000 #
11) L3 AR-1232-1	0.000	3.353	0	178607	N.D.	2.486 #
12) L3 AR-1232-2	0.000	4.126	0	259830	N.D.	3.918 #
13) L3 AR-1232-3	0.000	4.304	0	126387	N.D.	3.538 #
14) L3 AR-1232-4	0.000	4.385	0	115247	N.D.	3.799 #
15) L3 AR-1232-5	0.000	4.567	0	385184	N.D.	10.784 #
16) L4 AR-1242-1	4.875f	4.098	857491	54137	12.140	0.611 #
17) L4 AR-1242-2	0.000	4.126	0	259830	N.D.	2.066 #
18) L4 AR-1242-3	5.028	4.304	709514	126387	10.755	1.841 #
19) L4 AR-1242-4	0.000	4.385	0	115247	N.D.	1.773 #
20) L4 AR-1242-5	0.000	4.941	0	87842	N.D.	1.040 #
21) L5 AR-1248-1	4.875f	4.098	857491	54137	15.882	0.792 #
22) L5 AR-1248-2	0.000	4.352	0	84307	N.D.	0.872 #
23) L5 AR-1248-3	0.000	4.385	0	115247	N.D.	1.162 #
24) L5 AR-1248-4	0.000	4.567	0	385184	N.D.	3.186 #
25) L5 AR-1248-5	0.000	4.974	0	558166	N.D.	4.631 #
26) L6 AR-1254-1	0.000	4.941	0	87842	N.D.	0.477 #
27) L6 AR-1254-2	0.000	5.107	0	165795	N.D.	1.047 #
28) L6 AR-1254-3	0.000	5.521	0	74249	N.D.	0.279 #
29) L6 AR-1254-4	0.000	5.779	0	359128	N.D.	2.136 #
30) L6 AR-1254-5	0.000	6.226	0	2198955	N.D.	8.932 #
31) L7 AR-1260-1	0.000	5.670	0	163782	N.D.	0.960 #
32) L7 AR-1260-2	6.917	5.897	645454	330337	5.484	1.579 #
33) L7 AR-1260-3	0.000	6.048	0	12543012	N.D.	60.401 #
34) L7 AR-1260-4	0.000	6.559	0	1262734	N.D.	7.470 #
35) L7 AR-1260-5	7.863f	6.782	102356	6667582	0.579	16.446 #
36) L8 AR-1262-1	0.000	6.226f	0	2198955	N.D.	8.315 #
37) L8 AR-1262-2	7.863f	6.782	102356	6667582	0.453	13.473 #
38) L8 AR-1262-3	8.202	7.144	2140880	296012	13.917	1.702 #
39) L8 AR-1262-4	8.328	7.186	69478	68786	0.629	0.191 #
40) L8 AR-1262-5	0.000	7.699	0	1149096	N.D.	6.595 #
41) L9 AR-1268-1	8.202	7.144	2140880	296012	10.611	0.713 #

Data Path : Z:\pestpcbsrv\HPCHEM1\ECD\_R\Data\PR051123\  
 Data File : PR061376.D  
 Signal(s) : Signal #1: ECD1A.ch Signal #2: ECD2B.ch  
 Acq On : 11 May 2023 18:57  
 Operator : YP\AJ  
 Sample : 02694-20  
 Misc :  
 ALS Vial : 27 Sample Multiplier: 1

Instrument :  
 ECD\_R  
 ClientSampleId :

Integration File signal 1: autoint1.e  
 Integration File signal 2: autoint2.e  
 Quant Time: May 11 21:47:09 2023  
 Quant Method : Z:\pestpcbsrv\HPCHEM1\ECD\_R\Method\PR050923CLP.M  
 Quant Title : GC EXTRACTABLES  
 QLast Update : Wed May 10 07:27:40 2023  
 Response via : Initial Calibration  
 Integrator: ChemStation

Volume Inj. : 1 µl  
 Signal #1 Phase : ZB MR1 Signal #2 Phase: ZB MR2  
 Signal #1 Info : 30Mx0.32mmx 0.5µm Signal #2 Info : 30M x 0.32mm x 0.25µm

	Compound	RT#1	RT#2	Resp#1	Resp#2	ng/ml	ng/ml
42)	L9 AR-1268-2	8.328	7.186	69478	68786	0.402	0.180 #
43)	L9 AR-1268-3	0.000	7.407	0	352593	N.D.	1.055 #
44)	L9 AR-1268-4	0.000	7.699	0	1149096	N.D.	7.860 #
45)	L9 AR-1268-5	9.319	8.019	311445	1042839	0.669	0.969 #

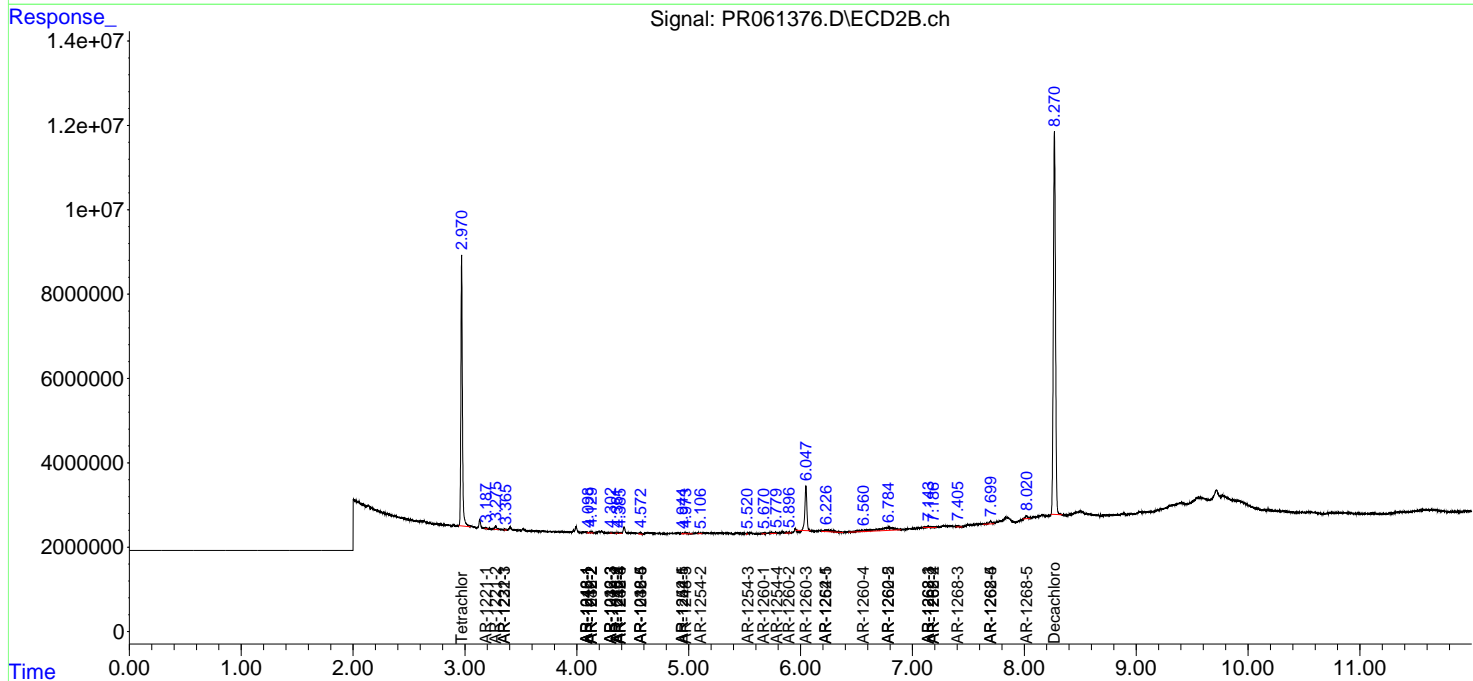
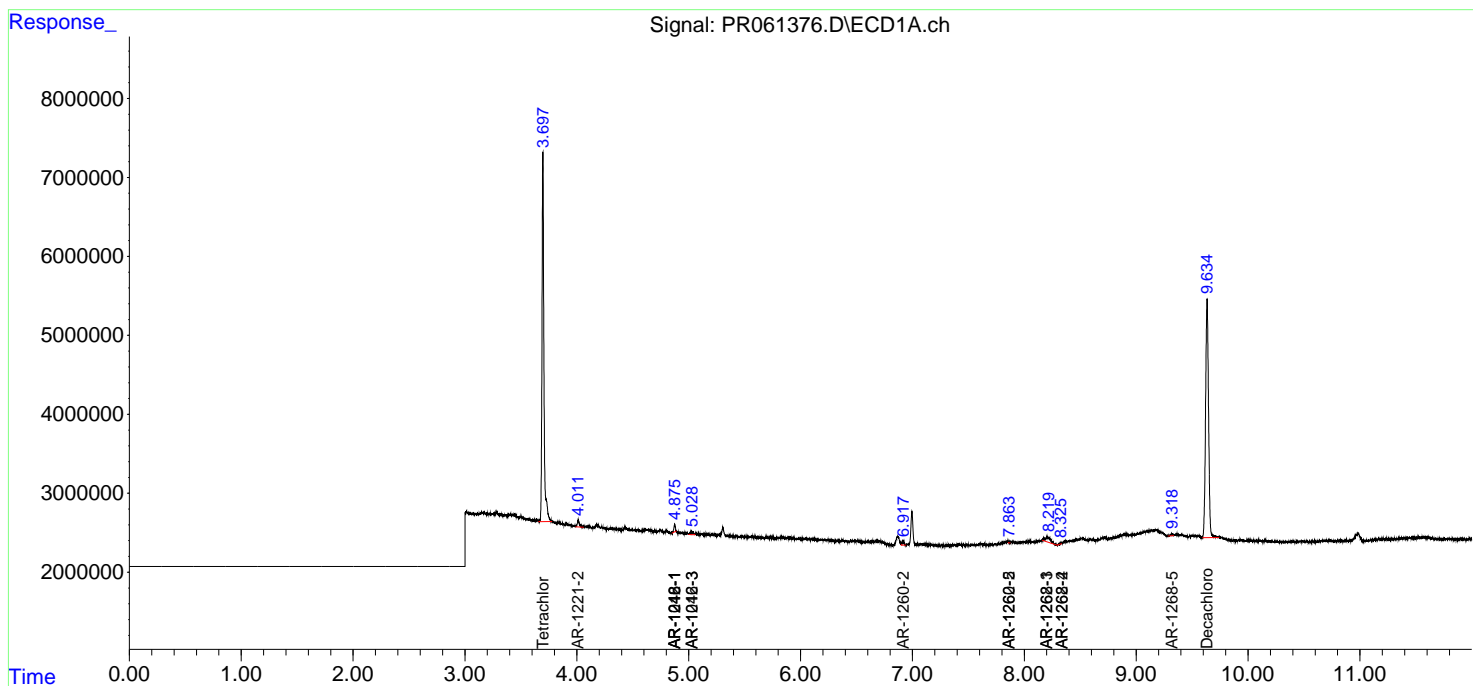
(f)=RT Delta > 1/2 Window (#)=Amounts differ by > 25% (m)=manual int.

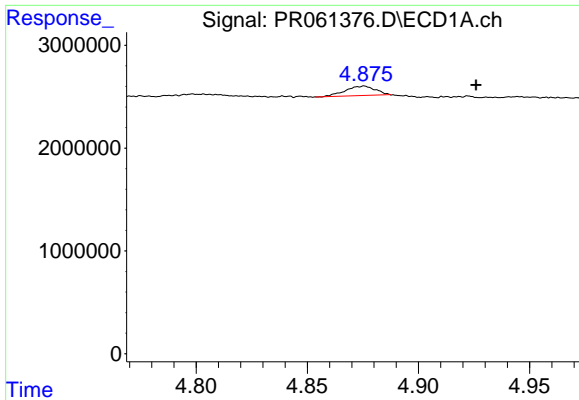
Data Path : Z:\pestpcbsrv\HPCHEM1\ECD\_R\Data\PR051123\  
 Data File : PR061376.D  
 Signal(s) : Signal #1: ECD1A.ch Signal #2: ECD2B.ch  
 Acq On : 11 May 2023 18:57  
 Operator : YP\AJ  
 Sample : 02694-20  
 Misc :  
 ALS Vial : 27 Sample Multiplier: 1

Instrument :  
 ECD\_R  
 ClientSampleId :

Integration File signal 1: autoint1.e  
 Integration File signal 2: autoint2.e  
 Quant Time: May 11 21:47:09 2023  
 Quant Method : Z:\pestpcbsrv\HPCHEM1\ECD\_R\Method\PR050923CLP.M  
 Quant Title : GC EXTRACTABLES  
 QLast Update : Wed May 10 07:27:40 2023  
 Response via : Initial Calibration  
 Integrator: ChemStation

Volume Inj. : 1 µl  
 Signal #1 Phase : ZB MR1 Signal #2 Phase: ZB MR2  
 Signal #1 Info : 30Mx0.32mmx 0.5µm Signal #2 Info : 30M x 0.32mm x 0.25µm

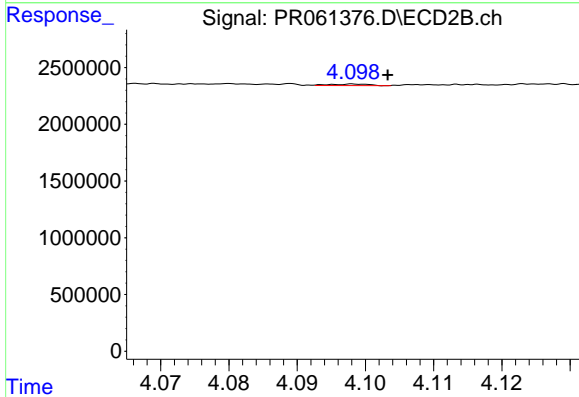




#3 AR-1016-1

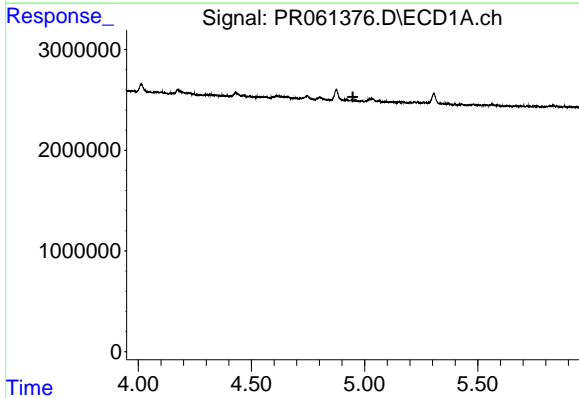
R.T.: 4.875 min  
 Delta R.T.: -0.051 min  
 Response: 857491  
 Conc: 10.51 ng/ml

Instrument :  
 ECD\_R  
 ClientSampleId :



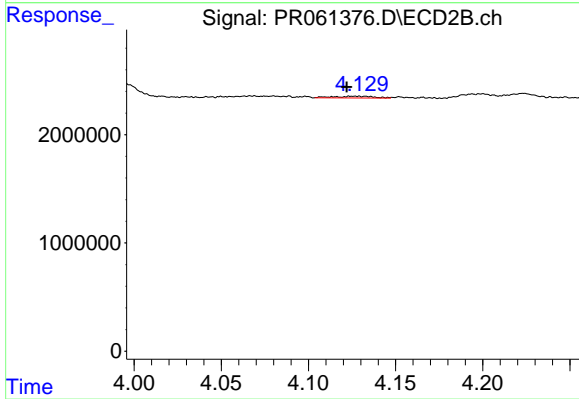
#3 AR-1016-1

R.T.: 4.098 min  
 Delta R.T.: -0.005 min  
 Response: 54137  
 Conc: 0.52 ng/ml



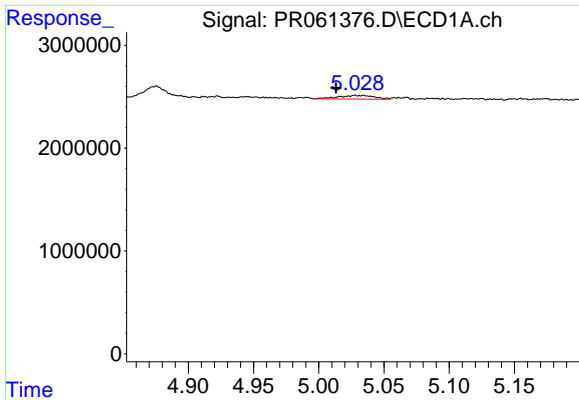
#4 AR-1016-2

R.T.: 0.000 min  
 Exp R.T. : 4.948 min  
 Response: 0  
 Conc: N.D.



#4 AR-1016-2

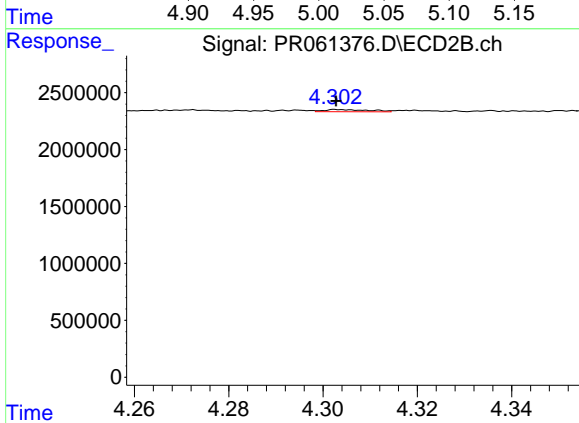
R.T.: 4.126 min  
 Delta R.T.: 0.004 min  
 Response: 259830  
 Conc: 1.76 ng/ml



#5 AR-1016-3

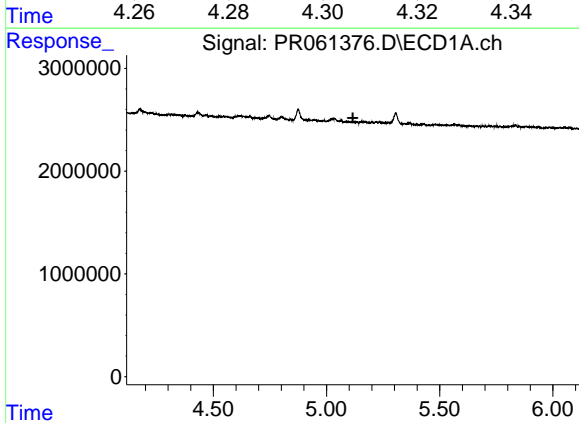
R.T.: 5.028 min  
 Delta R.T.: 0.015 min  
 Response: 709514  
 Conc: 9.37 ng/ml

Instrument :  
 ECD\_R  
 ClientSampleId :



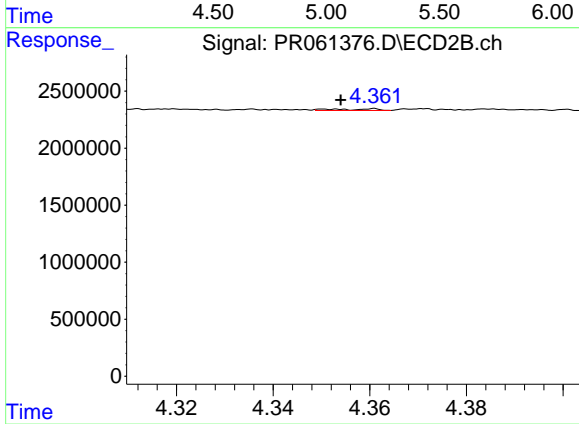
#5 AR-1016-3

R.T.: 4.304 min  
 Delta R.T.: 0.000 min  
 Response: 126387  
 Conc: 1.60 ng/ml



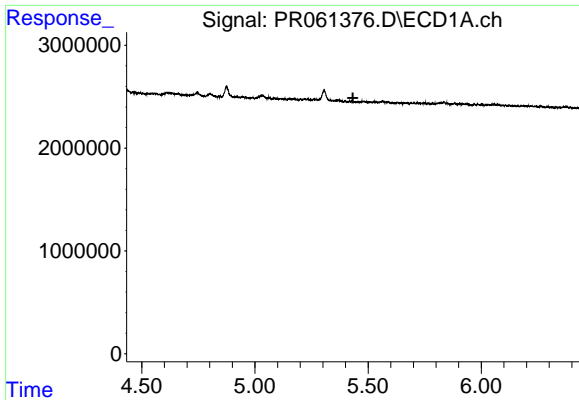
#6 AR-1016-4

R.T.: 0.000 min  
 Exp R.T. : 5.116 min  
 Response: 0  
 Conc: N.D.



#6 AR-1016-4

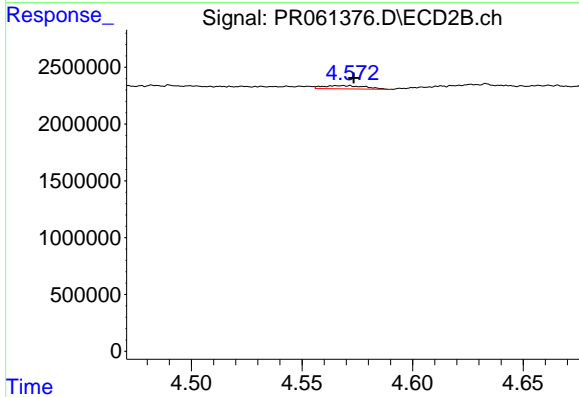
R.T.: 4.352 min  
 Delta R.T.: -0.002 min  
 Response: 84307  
 Conc: 1.39 ng/ml



#7 AR-1016-5

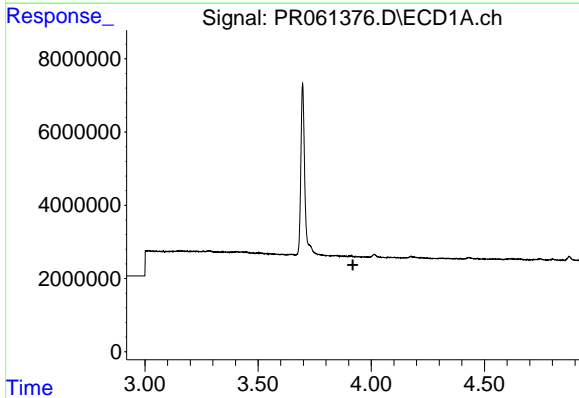
R.T.: 0.000 min  
 Exp R.T.: 5.433 min  
 Response: 0  
 Conc: N.D.

Instrument :  
 ECD\_R  
 ClientSampleId :



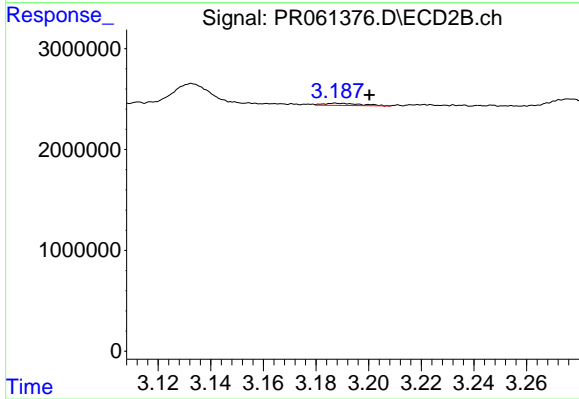
#7 AR-1016-5

R.T.: 4.567 min  
 Delta R.T.: -0.006 min  
 Response: 385184  
 Conc: 4.65 ng/ml



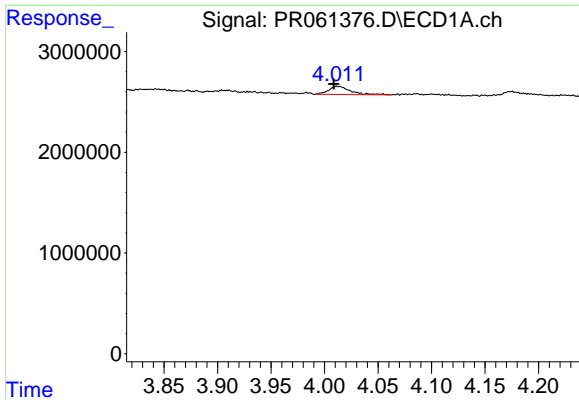
#8 AR-1221-1

R.T.: 0.000 min  
 Exp R.T.: 3.919 min  
 Response: 0  
 Conc: N.D.



#8 AR-1221-1

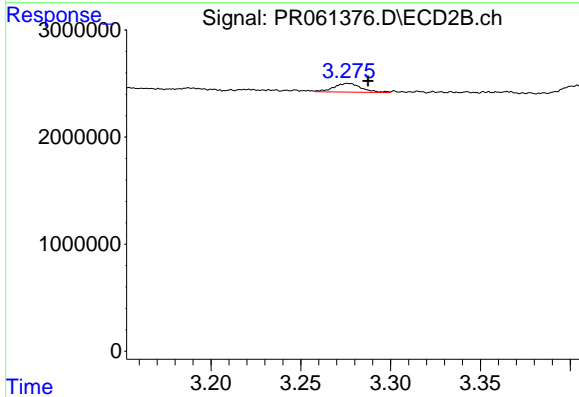
R.T.: 3.188 min  
 Delta R.T.: -0.013 min  
 Response: 202786  
 Conc: 5.22 ng/ml



#9 AR-1221-2

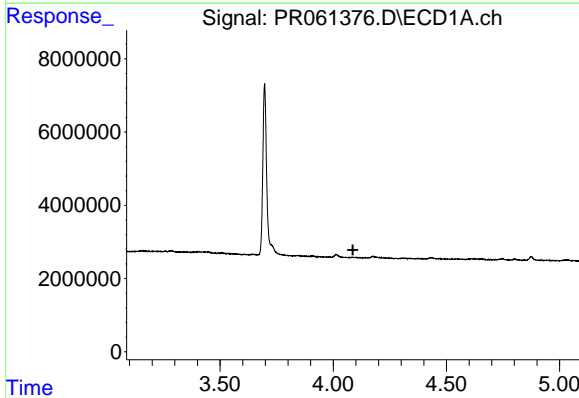
R.T.: 4.013 min  
 Delta R.T.: 0.004 min  
 Response: 1161118  
 Conc: 49.08 ng/ml

Instrument :  
 ECD\_R  
 ClientSampleId :



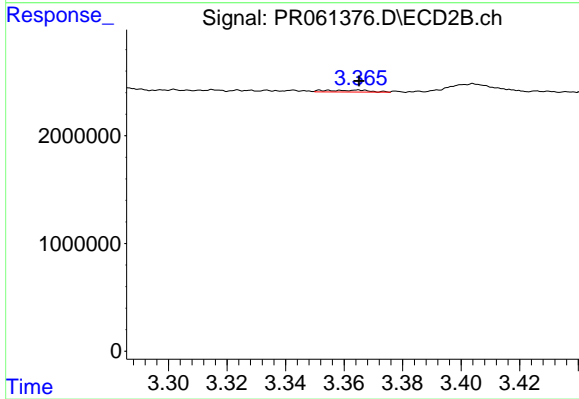
#9 AR-1221-2

R.T.: 3.277 min  
 Delta R.T.: -0.011 min  
 Response: 872254  
 Conc: 31.80 ng/ml



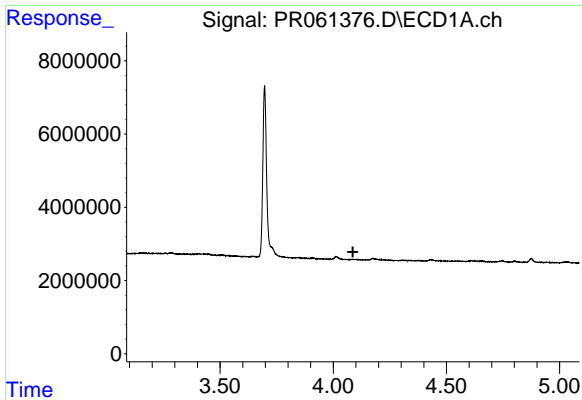
#10 AR-1221-3

R.T.: 0.000 min  
 Exp R.T. : 4.087 min  
 Response: 0  
 Conc: N.D.



#10 AR-1221-3

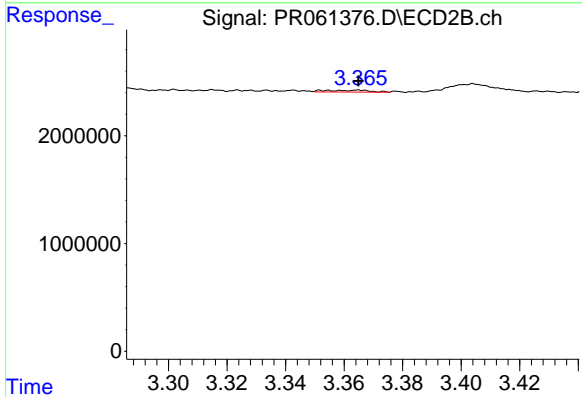
R.T.: 3.353 min  
 Delta R.T.: -0.012 min  
 Response: 178607  
 Conc: 2.00 ng/ml



#11 AR-1232-1

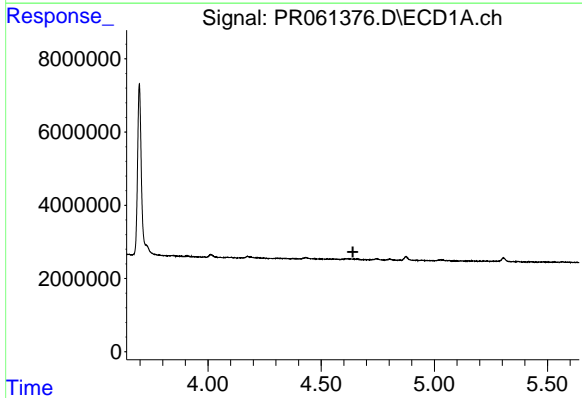
R.T.: 0.000 min  
 Exp R.T. : 4.087 min  
 Response: 0  
 Conc: N.D.

Instrument :  
 ECD\_R  
 ClientSampleId :



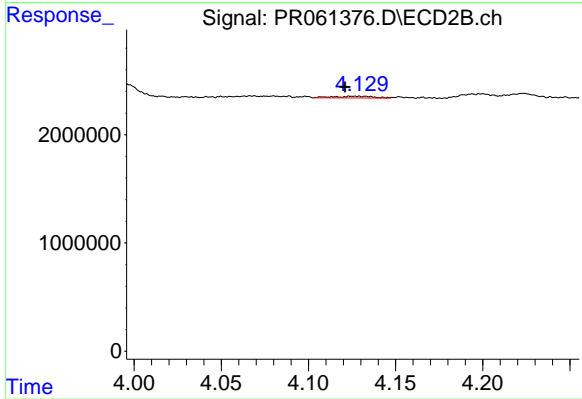
#11 AR-1232-1

R.T.: 3.353 min  
 Delta R.T.: -0.011 min  
 Response: 178607  
 Conc: 2.49 ng/ml



#12 AR-1232-2

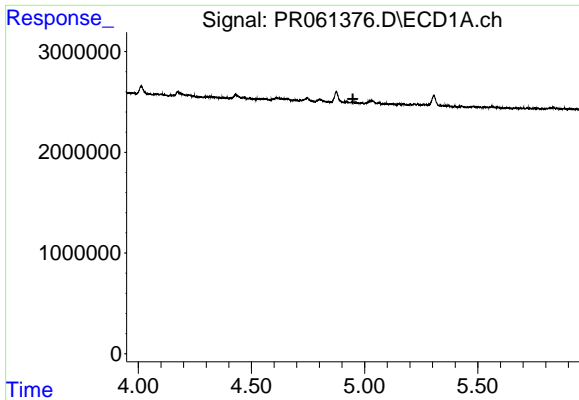
R.T.: 0.000 min  
 Exp R.T. : 4.640 min  
 Response: 0  
 Conc: N.D.



#12 AR-1232-2

R.T.: 4.126 min  
 Delta R.T.: 0.005 min  
 Response: 259830  
 Conc: 3.92 ng/ml

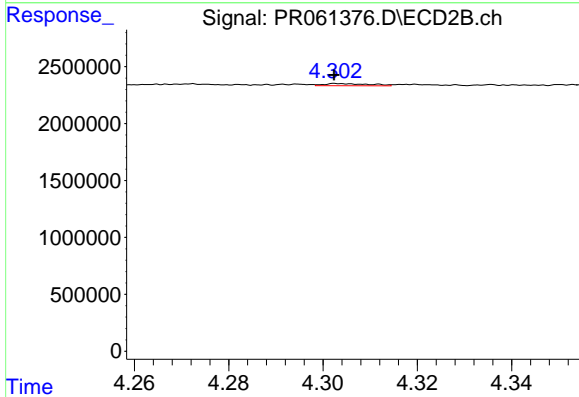




#13 AR-1232-3

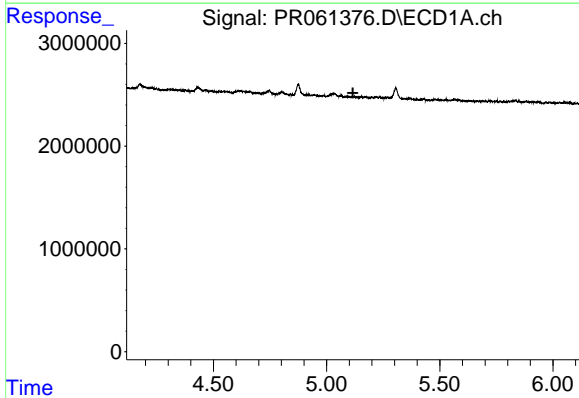
R.T.: 0.000 min  
 Exp R.T.: 4.948 min  
 Response: 0  
 Conc: N.D.

Instrument :  
 ECD\_R  
 ClientSampleId :



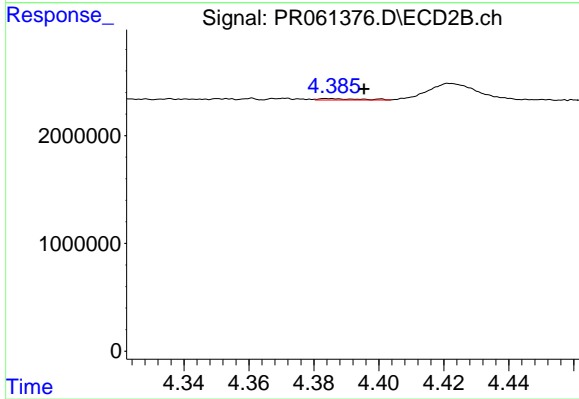
#13 AR-1232-3

R.T.: 4.304 min  
 Delta R.T.: 0.001 min  
 Response: 126387  
 Conc: 3.54 ng/ml



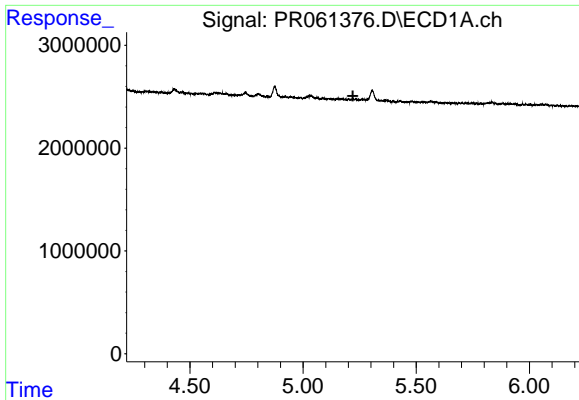
#14 AR-1232-4

R.T.: 0.000 min  
 Exp R.T.: 5.116 min  
 Response: 0  
 Conc: N.D.



#14 AR-1232-4

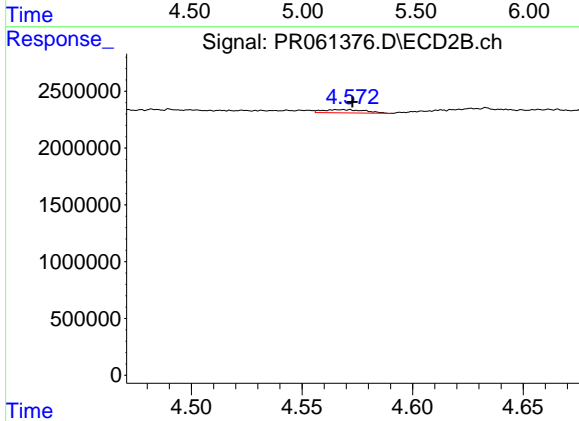
R.T.: 4.385 min  
 Delta R.T.: -0.011 min  
 Response: 115247  
 Conc: 3.80 ng/ml



#15 AR-1232-5

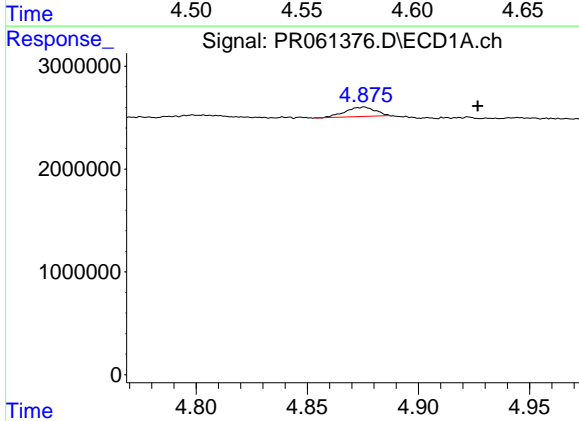
R.T.: 0.000 min  
 Exp R.T.: 5.220 min  
 Response: 0  
 Conc: N.D.

Instrument :  
 ECD\_R  
 ClientSampleId :



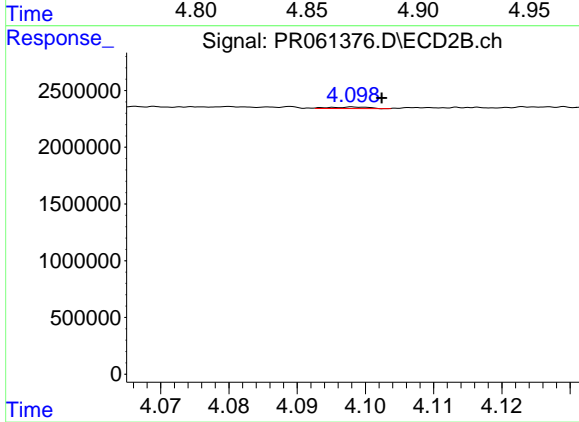
#15 AR-1232-5

R.T.: 4.567 min  
 Delta R.T.: -0.005 min  
 Response: 385184  
 Conc: 10.78 ng/ml



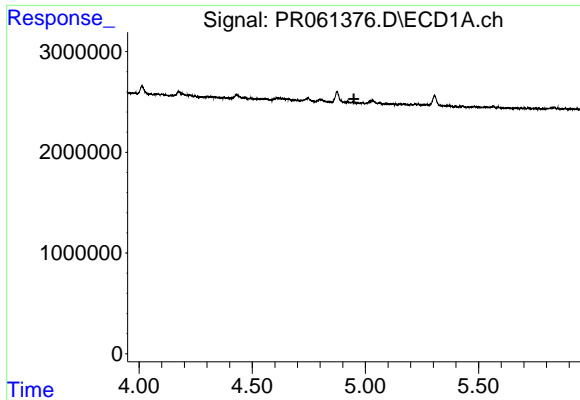
#16 AR-1242-1

R.T.: 4.875 min  
 Delta R.T.: -0.051 min  
 Response: 857491  
 Conc: 12.14 ng/ml



#16 AR-1242-1

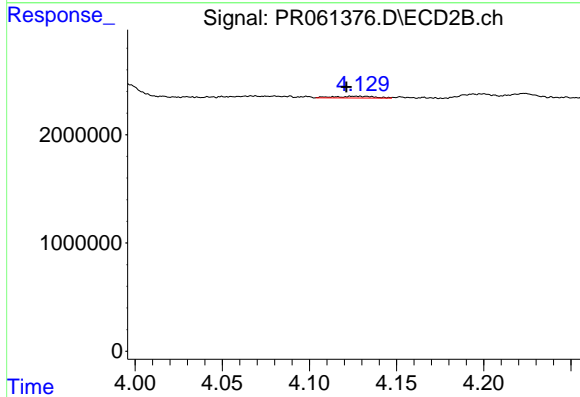
R.T.: 4.098 min  
 Delta R.T.: -0.004 min  
 Response: 54137  
 Conc: 0.61 ng/ml



#17 AR-1242-2

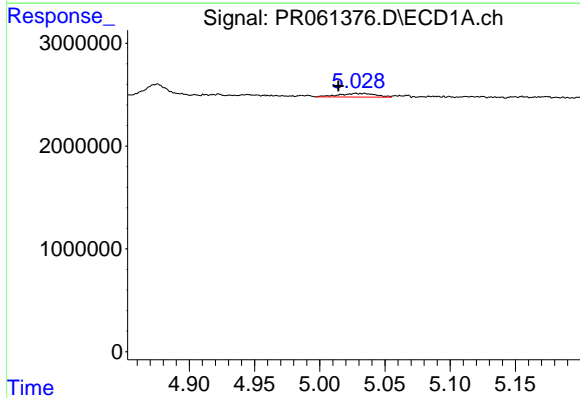
R.T.: 0.000 min  
 Exp R.T.: 4.949 min  
 Response: 0  
 Conc: N.D.

Instrument :  
 ECD\_R  
 ClientSampleId :



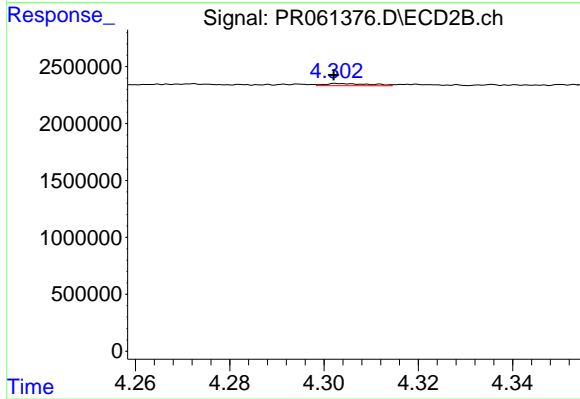
#17 AR-1242-2

R.T.: 4.126 min  
 Delta R.T.: 0.005 min  
 Response: 259830  
 Conc: 2.07 ng/ml



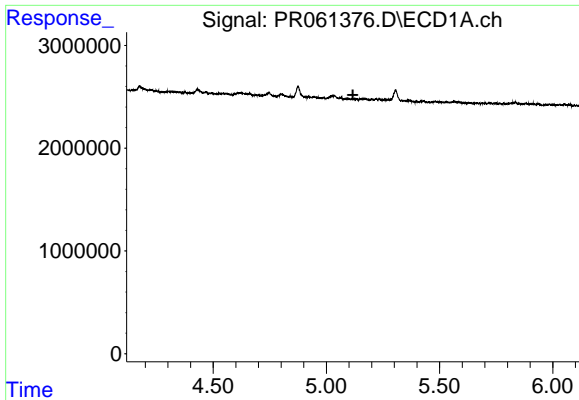
#18 AR-1242-3

R.T.: 5.028 min  
 Delta R.T.: 0.014 min  
 Response: 709514  
 Conc: 10.76 ng/ml



#18 AR-1242-3

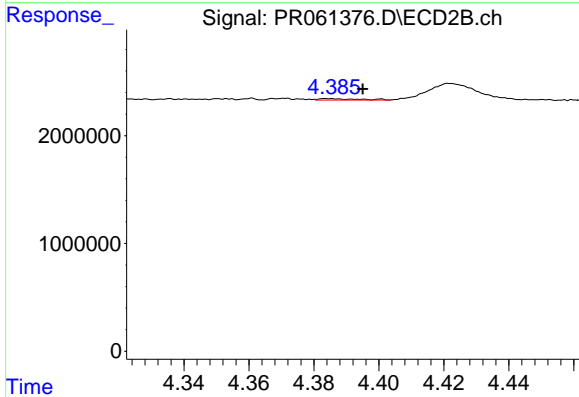
R.T.: 4.304 min  
 Delta R.T.: 0.002 min  
 Response: 126387  
 Conc: 1.84 ng/ml



#19 AR-1242-4

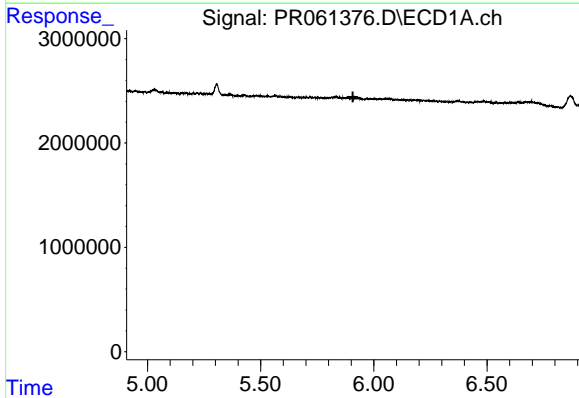
R.T.: 0.000 min  
 Exp R.T.: 5.117 min  
 Response: 0  
 Conc: N.D.

Instrument :  
 ECD\_R  
 ClientSampleId :



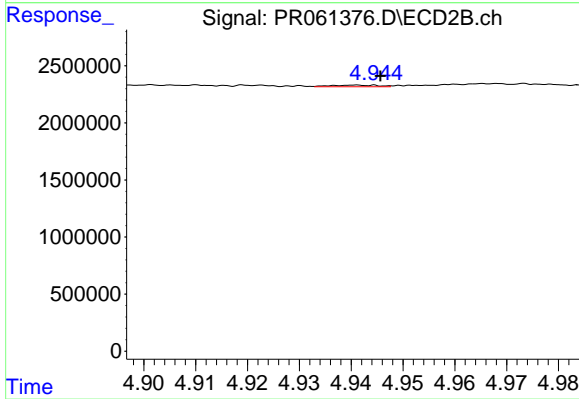
#19 AR-1242-4

R.T.: 4.385 min  
 Delta R.T.: -0.010 min  
 Response: 115247  
 Conc: 1.77 ng/ml



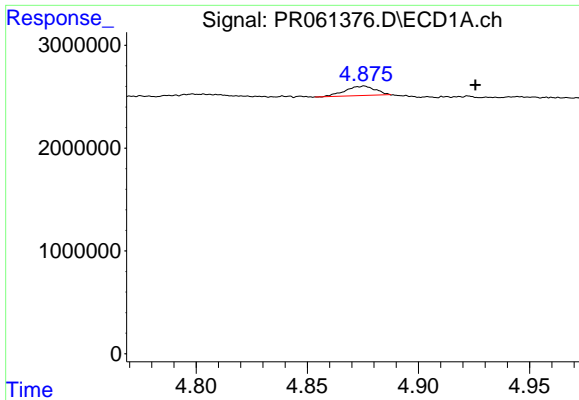
#20 AR-1242-5

R.T.: 0.000 min  
 Exp R.T.: 5.907 min  
 Response: 0  
 Conc: N.D.



#20 AR-1242-5

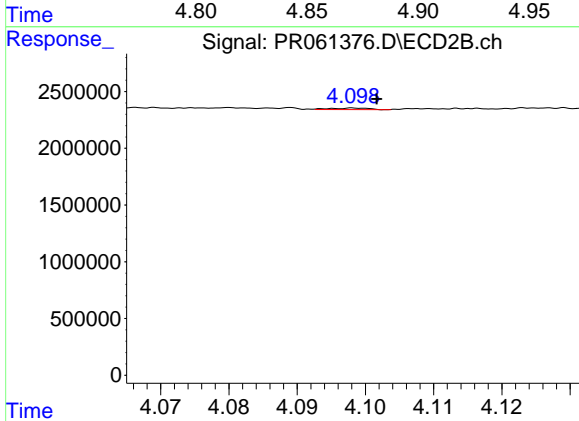
R.T.: 4.941 min  
 Delta R.T.: -0.005 min  
 Response: 87842  
 Conc: 1.04 ng/ml



#21 AR-1248-1

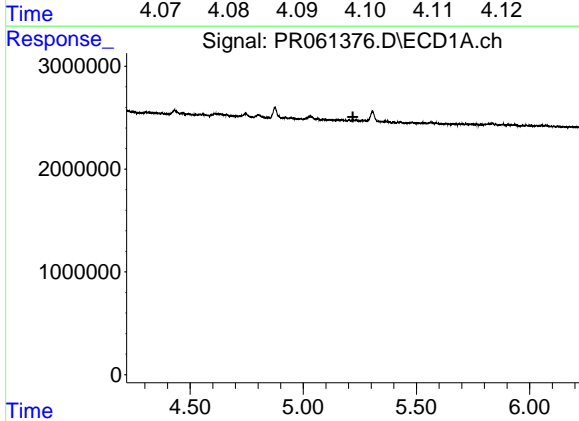
R.T.: 4.875 min  
 Delta R.T.: -0.050 min  
 Response: 857491  
 Conc: 15.88 ng/ml

Instrument :  
 ECD\_R  
 ClientSampleId :



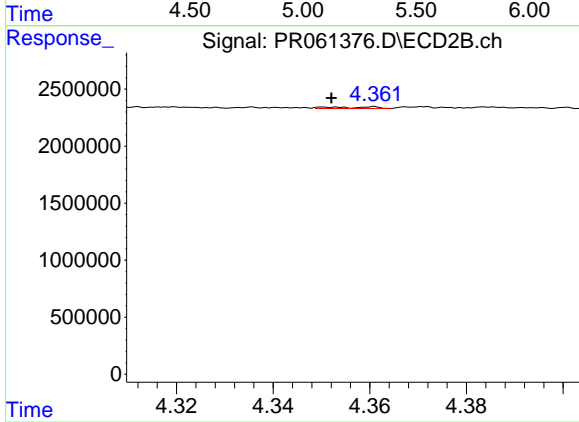
#21 AR-1248-1

R.T.: 4.098 min  
 Delta R.T.: -0.003 min  
 Response: 54137  
 Conc: 0.79 ng/ml



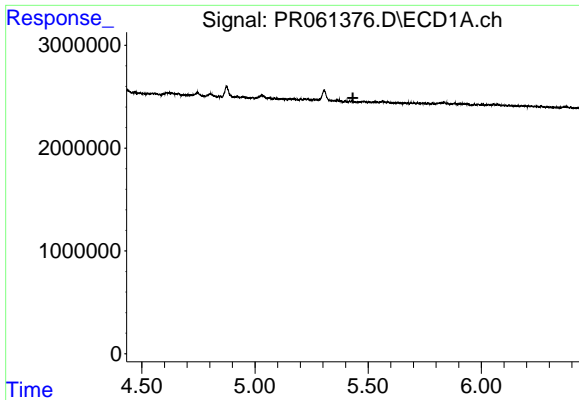
#22 AR-1248-2

R.T.: 0.000 min  
 Exp R.T. : 5.219 min  
 Response: 0  
 Conc: N.D.



#22 AR-1248-2

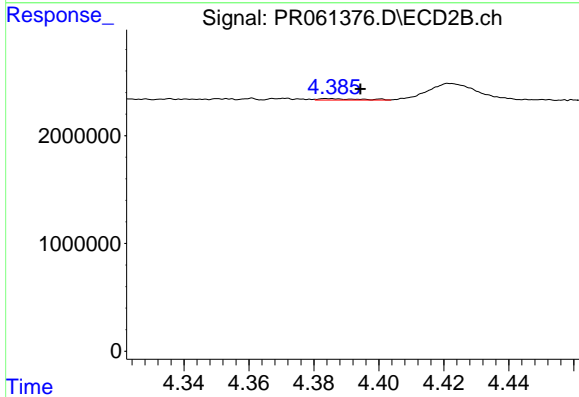
R.T.: 4.352 min  
 Delta R.T.: 0.000 min  
 Response: 84307  
 Conc: 0.87 ng/ml



#23 AR-1248-3

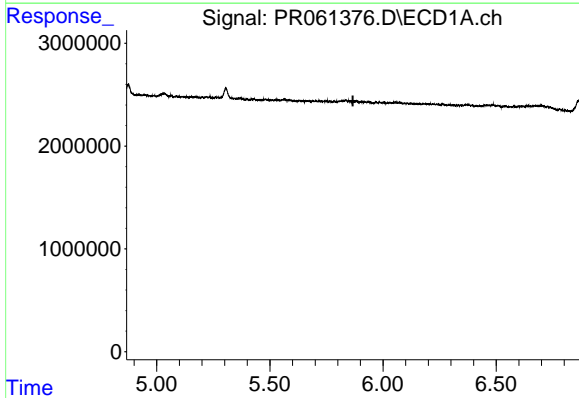
R.T.: 0.000 min  
 Exp R.T.: 5.432 min  
 Response: 0  
 Conc: N.D.

Instrument :  
 ECD\_R  
 ClientSampleId :



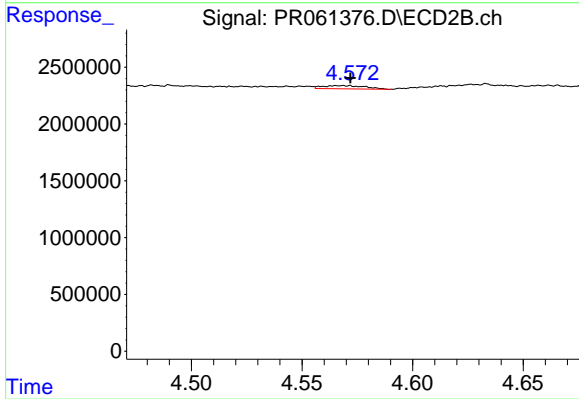
#23 AR-1248-3

R.T.: 4.385 min  
 Delta R.T.: -0.010 min  
 Response: 115247  
 Conc: 1.16 ng/ml



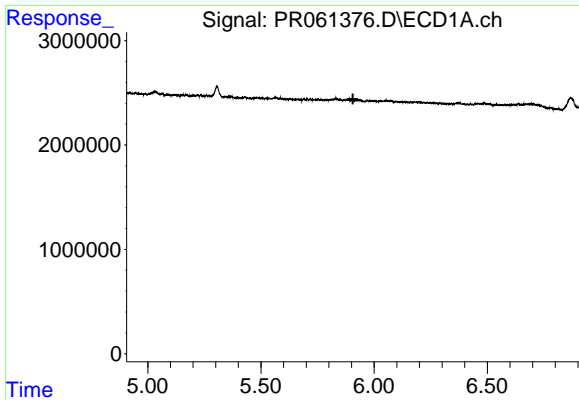
#24 AR-1248-4

R.T.: 0.000 min  
 Exp R.T.: 5.867 min  
 Response: 0  
 Conc: N.D.



#24 AR-1248-4

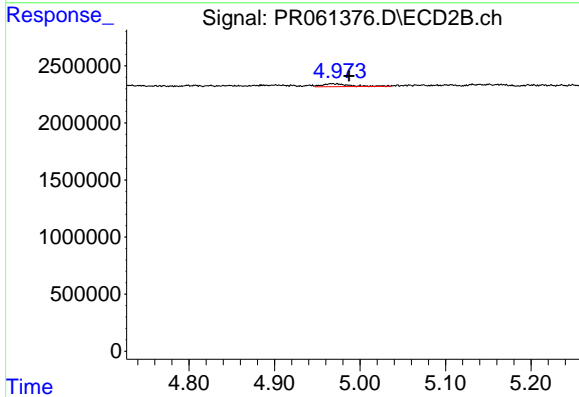
R.T.: 4.567 min  
 Delta R.T.: -0.005 min  
 Response: 385184  
 Conc: 3.19 ng/ml



#25 AR-1248-5

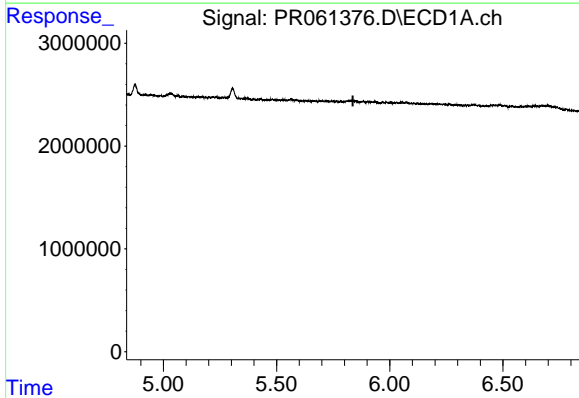
R.T.: 0.000 min  
 Exp R.T.: 5.906 min  
 Response: 0  
 Conc: N.D.

Instrument : ECD\_R  
 ClientSampleId :



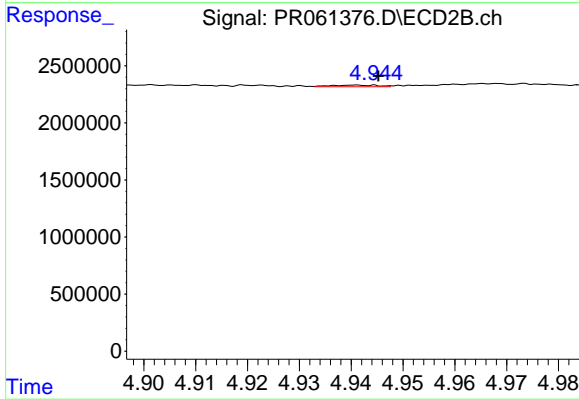
#25 AR-1248-5

R.T.: 4.974 min  
 Delta R.T.: -0.014 min  
 Response: 558166  
 Conc: 4.63 ng/ml



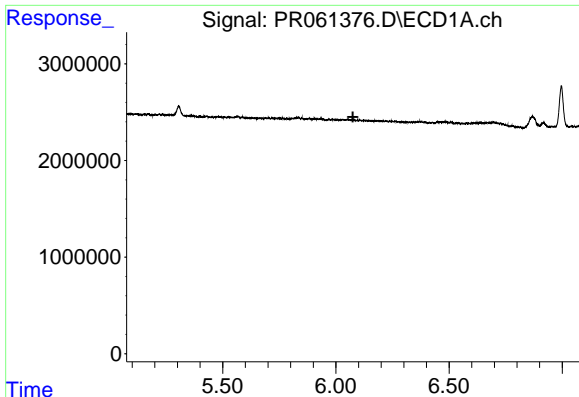
#26 AR-1254-1

R.T.: 0.000 min  
 Exp R.T.: 5.837 min  
 Response: 0  
 Conc: N.D.



#26 AR-1254-1

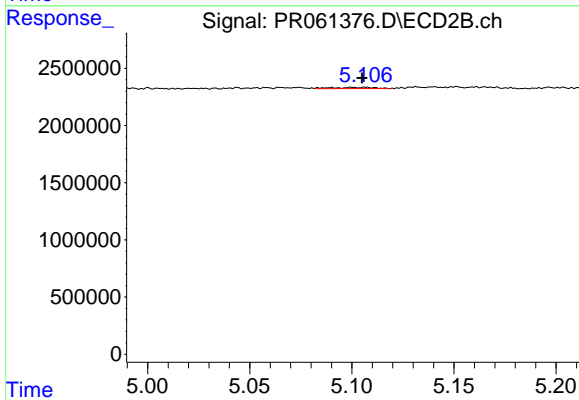
R.T.: 4.941 min  
 Delta R.T.: -0.004 min  
 Response: 87842  
 Conc: 0.48 ng/ml



#27 AR-1254-2

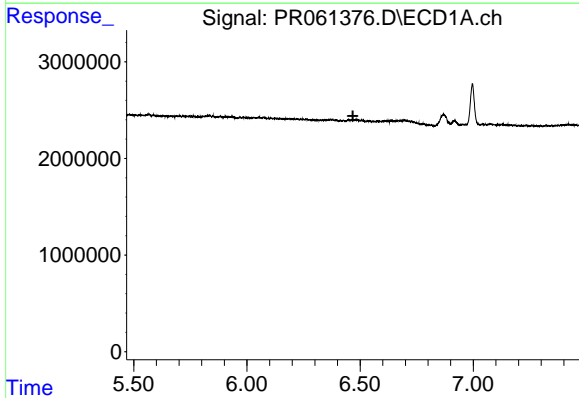
R.T.: 0.000 min  
 Exp R.T.: 6.075 min  
 Response: 0  
 Conc: N.D.

Instrument :  
 ECD\_R  
 ClientSampleId :



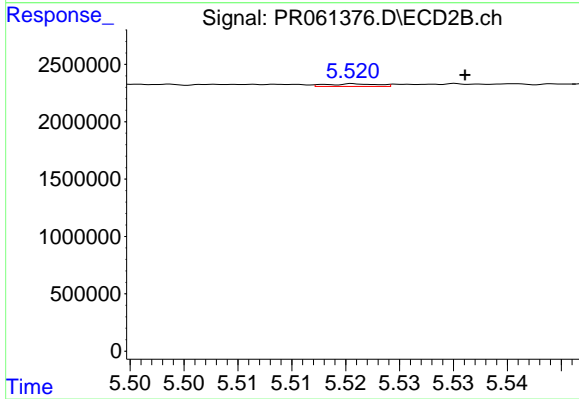
#27 AR-1254-2

R.T.: 5.107 min  
 Delta R.T.: 0.002 min  
 Response: 165795  
 Conc: 1.05 ng/ml



#28 AR-1254-3

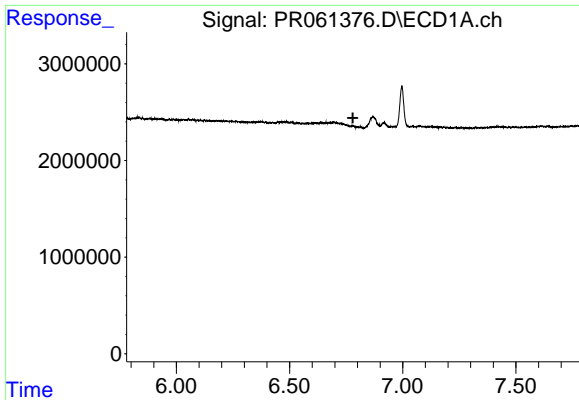
R.T.: 0.000 min  
 Exp R.T.: 6.468 min  
 Response: 0  
 Conc: N.D.



#28 AR-1254-3

R.T.: 5.521 min  
 Delta R.T.: -0.010 min  
 Response: 74249  
 Conc: 0.28 ng/ml

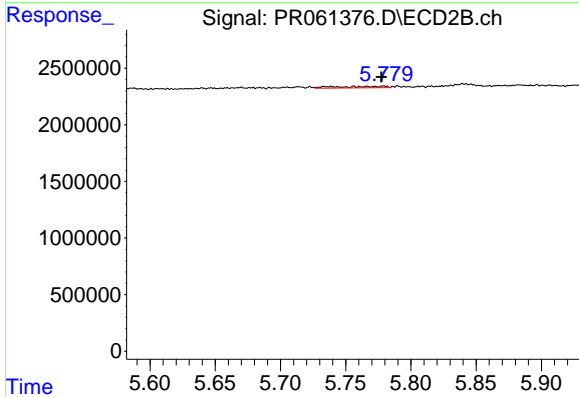




#29 AR-1254-4

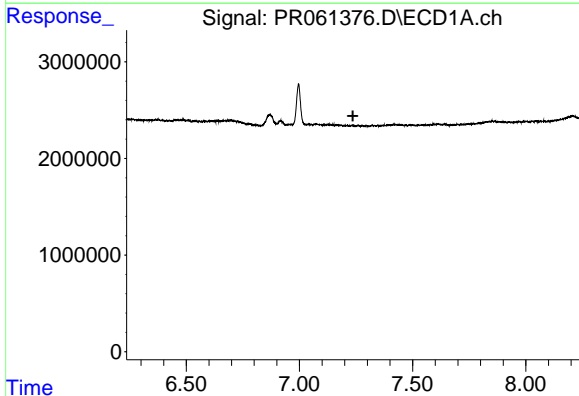
R.T.: 0.000 min  
 Exp R.T.: 6.780 min  
 Response: 0  
 Conc: N.D.

Instrument :  
 ECD\_R  
 ClientSampleId :



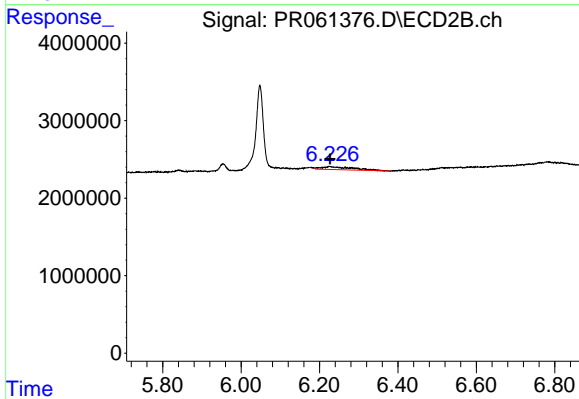
#29 AR-1254-4

R.T.: 5.779 min  
 Delta R.T.: 0.002 min  
 Response: 359128  
 Conc: 2.14 ng/ml



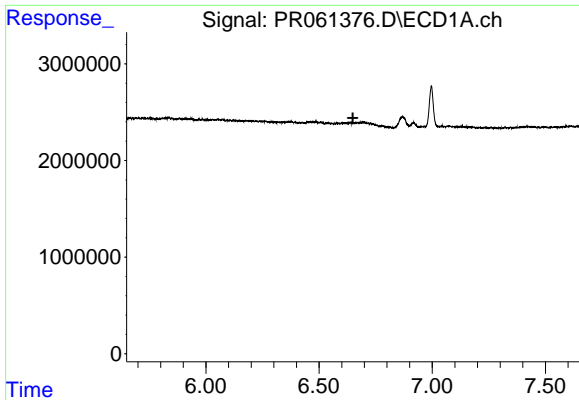
#30 AR-1254-5

R.T.: 0.000 min  
 Exp R.T.: 7.236 min  
 Response: 0  
 Conc: N.D.



#30 AR-1254-5

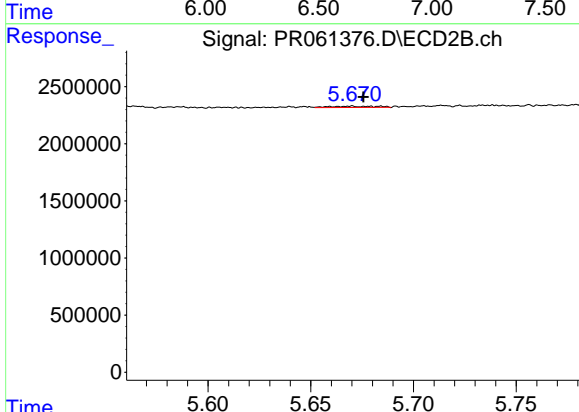
R.T.: 6.226 min  
 Delta R.T.: 0.000 min  
 Response: 2198955  
 Conc: 8.93 ng/ml



#31 AR-1260-1

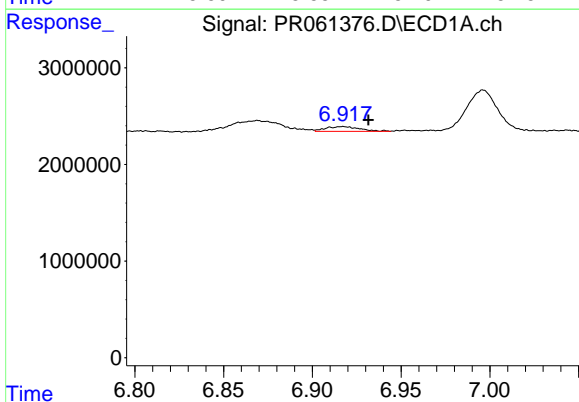
R.T.: 0.000 min  
 Exp R.T.: 6.650 min  
 Response: 0  
 Conc: N.D.

Instrument :  
 ECD\_R  
 ClientSampleId :



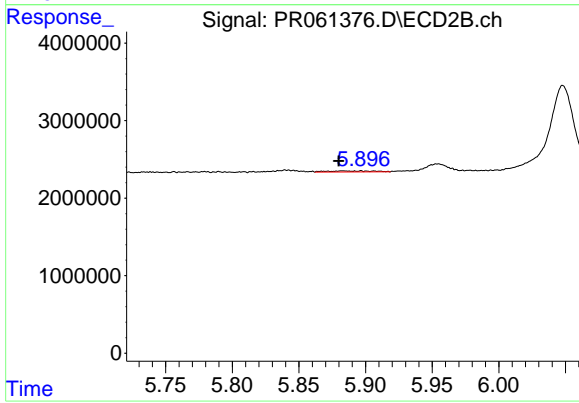
#31 AR-1260-1

R.T.: 5.670 min  
 Delta R.T.: -0.006 min  
 Response: 163782  
 Conc: 0.96 ng/ml



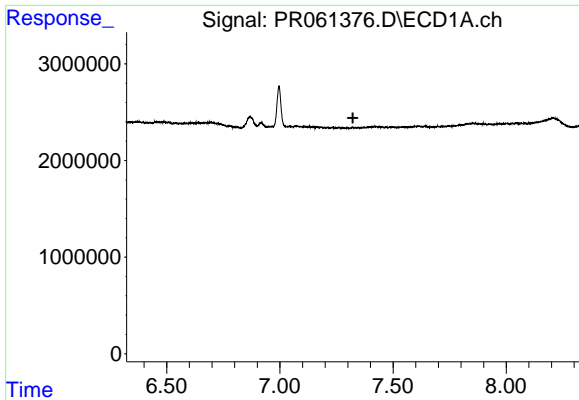
#32 AR-1260-2

R.T.: 6.917 min  
 Delta R.T.: -0.014 min  
 Response: 645454  
 Conc: 5.48 ng/ml



#32 AR-1260-2

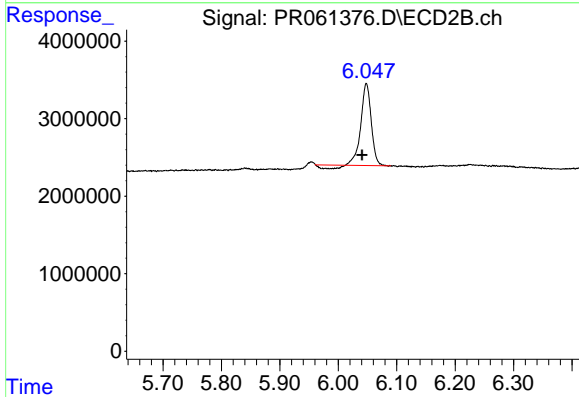
R.T.: 5.897 min  
 Delta R.T.: 0.017 min  
 Response: 330337  
 Conc: 1.58 ng/ml



#33 AR-1260-3

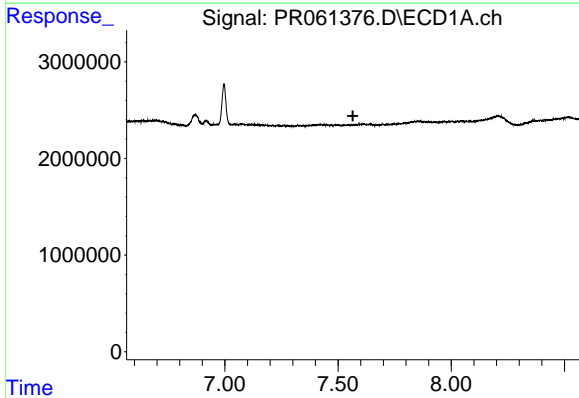
R.T.: 0.000 min  
 Exp R.T.: 7.322 min  
 Response: 0  
 Conc: N.D.

Instrument :  
 ECD\_R  
 ClientSampleId :



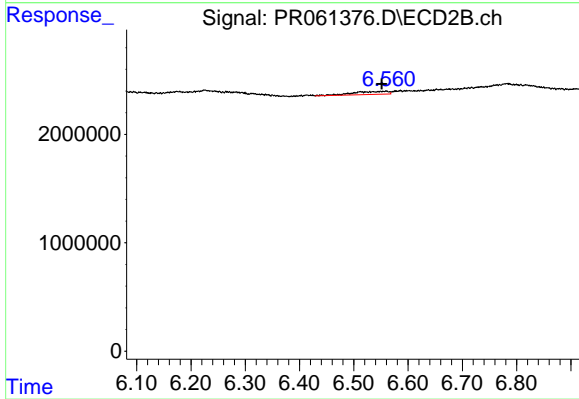
#33 AR-1260-3

R.T.: 6.048 min  
 Delta R.T.: 0.007 min  
 Response: 12543012  
 Conc: 60.40 ng/ml



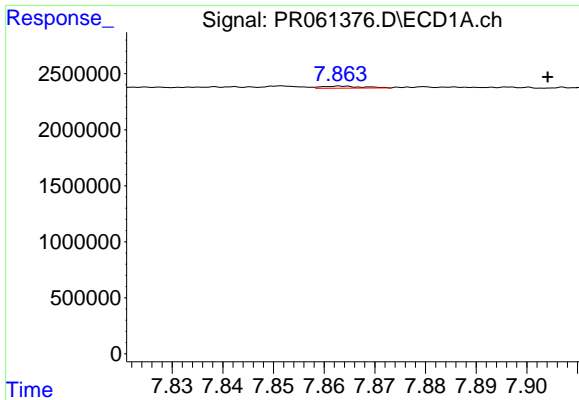
#34 AR-1260-4

R.T.: 0.000 min  
 Exp R.T.: 7.565 min  
 Response: 0  
 Conc: N.D.



#34 AR-1260-4

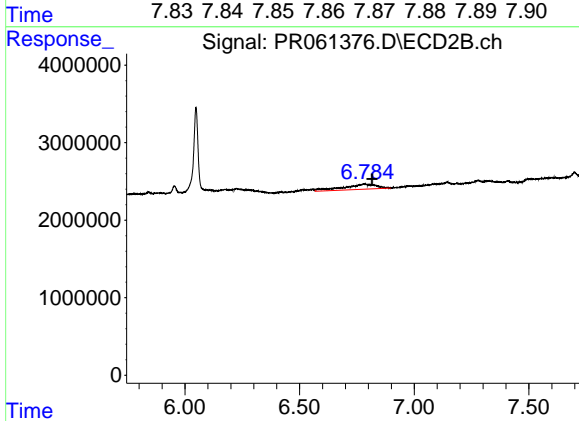
R.T.: 6.559 min  
 Delta R.T.: 0.008 min  
 Response: 1262734  
 Conc: 7.47 ng/ml



#35 AR-1260-5

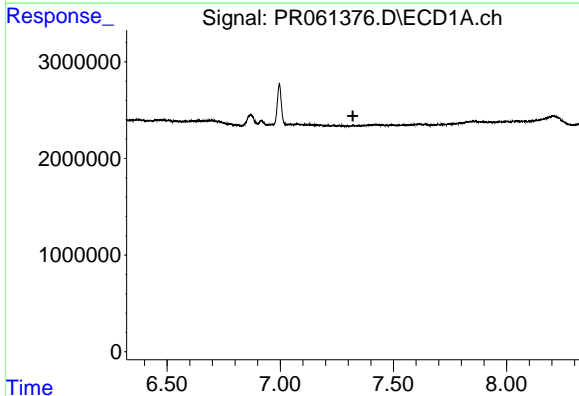
R.T.: 7.863 min  
 Delta R.T.: -0.041 min  
 Response: 102356  
 Conc: 0.58 ng/ml

Instrument :  
 ECD\_R  
 ClientSampleId :



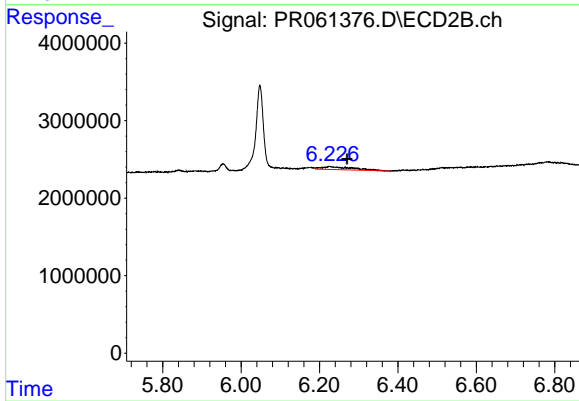
#35 AR-1260-5

R.T.: 6.782 min  
 Delta R.T.: -0.033 min  
 Response: 6667582  
 Conc: 16.45 ng/ml



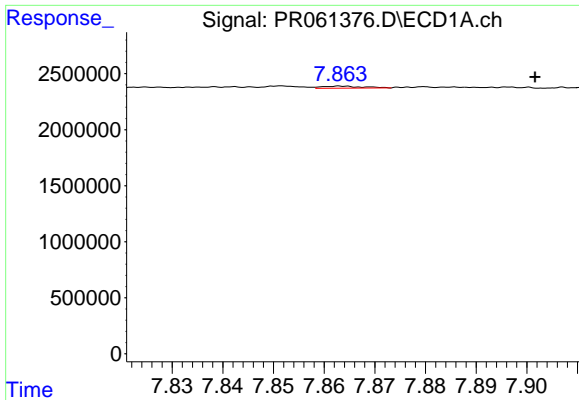
#36 AR-1262-1

R.T.: 0.000 min  
 Exp R.T. : 7.321 min  
 Response: 0  
 Conc: N.D.



#36 AR-1262-1

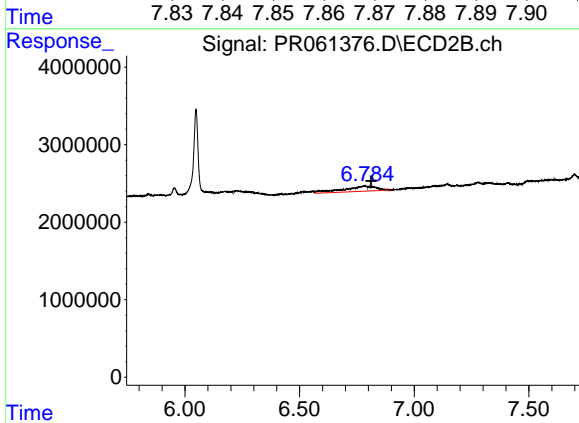
R.T.: 6.226 min  
 Delta R.T.: -0.045 min  
 Response: 2198955  
 Conc: 8.31 ng/ml



#37 AR-1262-2

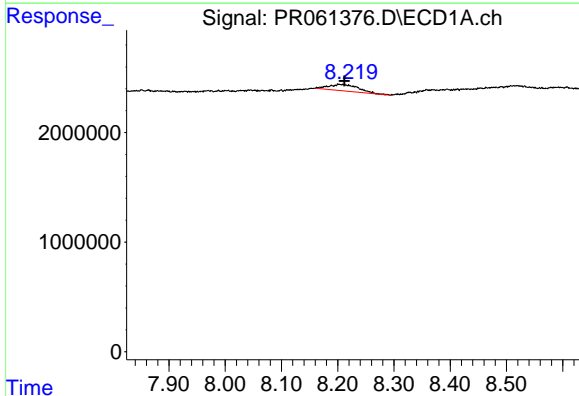
R.T.: 7.863 min  
 Delta R.T.: -0.038 min  
 Response: 102356  
 Conc: 0.45 ng/ml

Instrument :  
 ECD\_R  
 ClientSampleId :



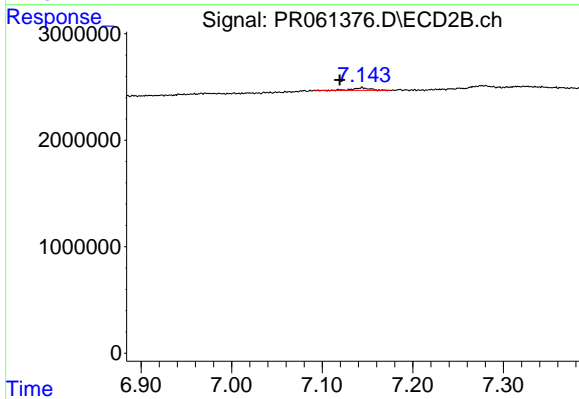
#37 AR-1262-2

R.T.: 6.782 min  
 Delta R.T.: -0.029 min  
 Response: 6667582  
 Conc: 13.47 ng/ml



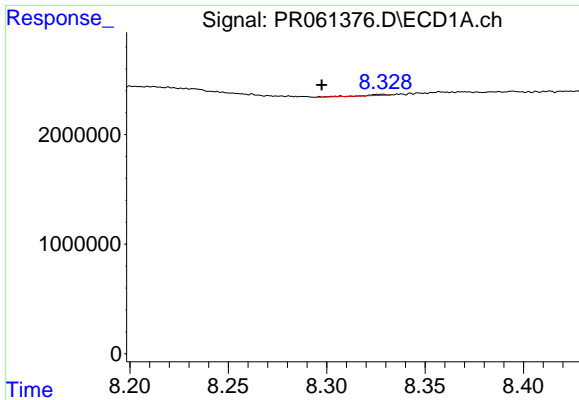
#38 AR-1262-3

R.T.: 8.202 min  
 Delta R.T.: -0.010 min  
 Response: 2140880  
 Conc: 13.92 ng/ml



#38 AR-1262-3

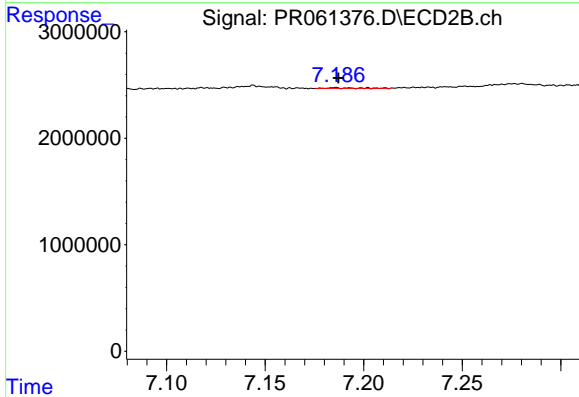
R.T.: 7.144 min  
 Delta R.T.: 0.024 min  
 Response: 296012  
 Conc: 1.70 ng/ml



#39 AR-1262-4

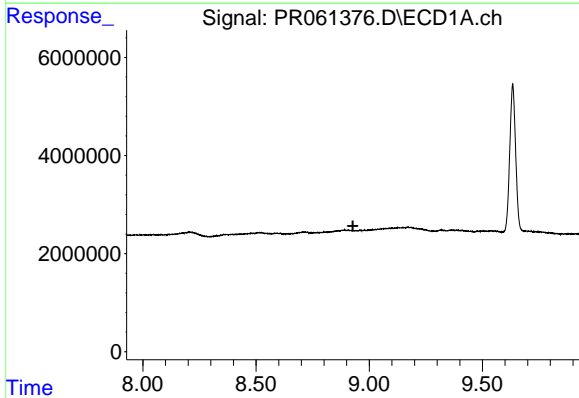
R.T.: 8.328 min  
 Delta R.T.: 0.030 min  
 Response: 69478  
 Conc: 0.63 ng/ml

Instrument :  
 ECD\_R  
 ClientSampleId :



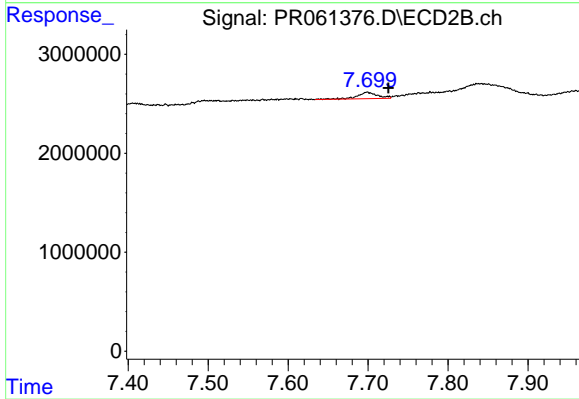
#39 AR-1262-4

R.T.: 7.186 min  
 Delta R.T.: -0.002 min  
 Response: 68786  
 Conc: 0.19 ng/ml



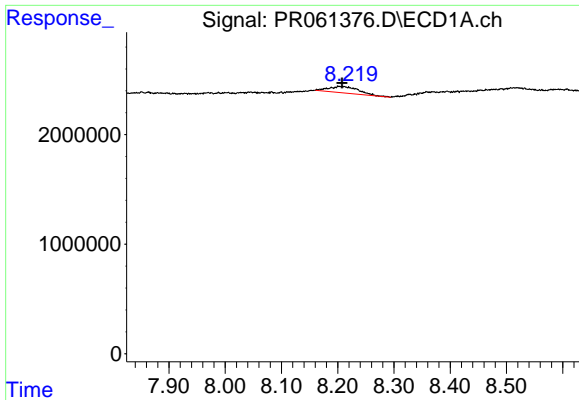
#40 AR-1262-5

R.T.: 0.000 min  
 Exp R.T. : 8.928 min  
 Response: 0  
 Conc: N.D.



#40 AR-1262-5

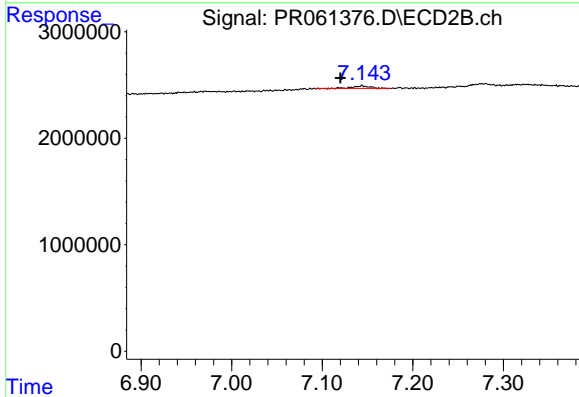
R.T.: 7.699 min  
 Delta R.T.: -0.026 min  
 Response: 1149096  
 Conc: 6.60 ng/ml



#41 AR-1268-1

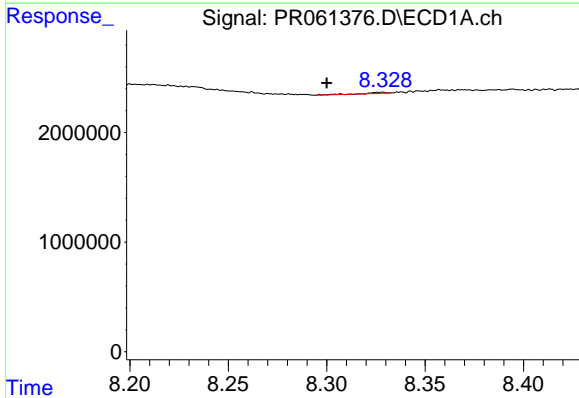
R.T.: 8.202 min  
 Delta R.T.: -0.006 min  
 Response: 2140880  
 Conc: 10.61 ng/ml

Instrument :  
 ECD\_R  
 ClientSampleId :



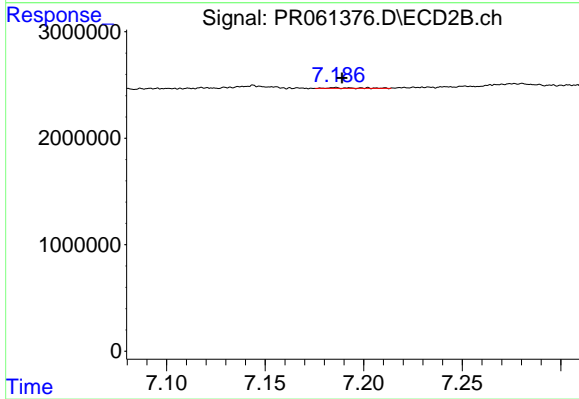
#41 AR-1268-1

R.T.: 7.144 min  
 Delta R.T.: 0.024 min  
 Response: 296012  
 Conc: 0.71 ng/ml



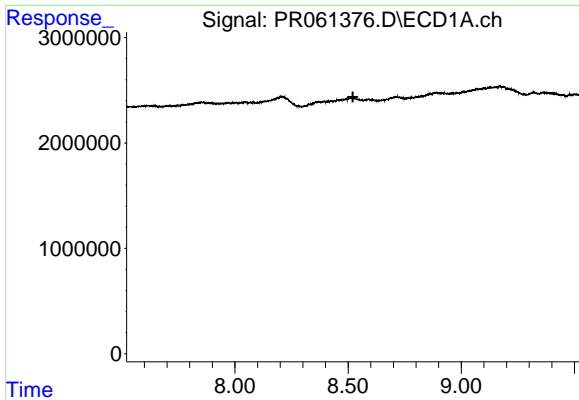
#42 AR-1268-2

R.T.: 8.328 min  
 Delta R.T.: 0.028 min  
 Response: 69478  
 Conc: 0.40 ng/ml



#42 AR-1268-2

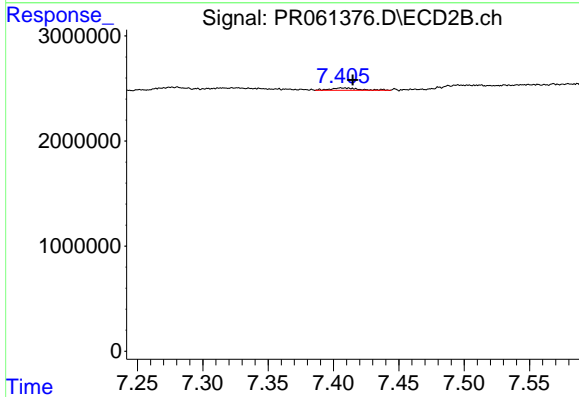
R.T.: 7.186 min  
 Delta R.T.: -0.003 min  
 Response: 68786  
 Conc: 0.18 ng/ml



#43 AR-1268-3

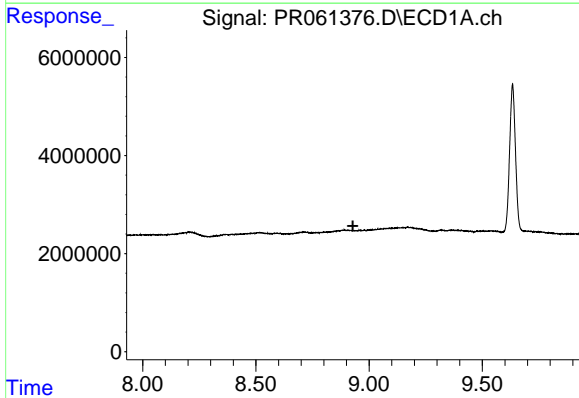
R.T.: 0.000 min  
 Exp R.T.: 8.521 min  
 Response: 0  
 Conc: N.D.

Instrument :  
 ECD\_R  
 ClientSampleId :



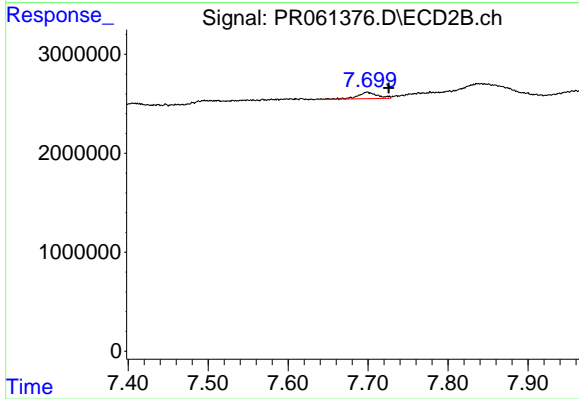
#43 AR-1268-3

R.T.: 7.407 min  
 Delta R.T.: -0.007 min  
 Response: 352593  
 Conc: 1.06 ng/ml



#44 AR-1268-4

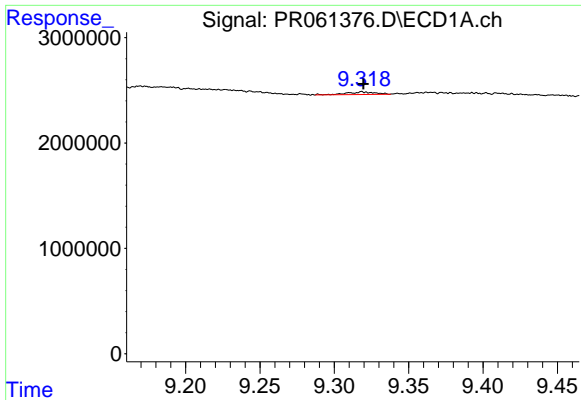
R.T.: 0.000 min  
 Exp R.T.: 8.929 min  
 Response: 0  
 Conc: N.D.



#44 AR-1268-4

R.T.: 7.699 min  
 Delta R.T.: -0.027 min  
 Response: 1149096  
 Conc: 7.86 ng/ml

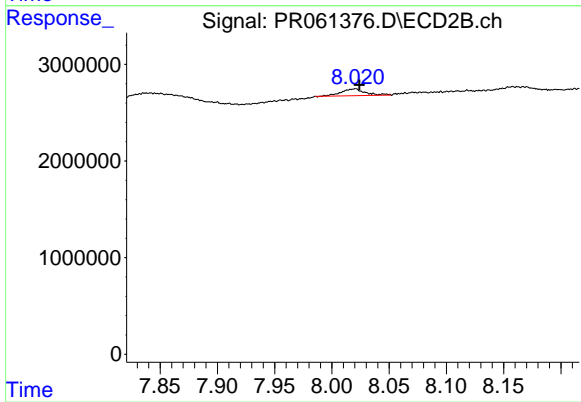




#45 AR-1268-5

R.T.: 9.319 min  
Delta R.T.: 0.000 min  
Response: 311445  
Conc: 0.67 ng/ml

Instrument :  
ECD\_R  
ClientSampleId :



#45 AR-1268-5

R.T.: 8.019 min  
Delta R.T.: -0.005 min  
Response: 1042839  
Conc: 0.97 ng/ml