

Data Path : Z:\pestpcbsrv\HPCHEM1\ECD_R\Data\PR051619\
 Data File : PR037958.D
 Signal(s) : Signal #1: ECD1A.ch Signal #2: ECD2B.ch
 Acq On : 16 May 2019 08:16
 Operator : SM\MA
 Sample : HEXANE
 Misc :
 ALS Vial : 1 Sample Multiplier: 1

Instrument :
 ECD_R
 ClientSampleId :
 HEXANE

Integration File signal 1: autoint1.e
 Integration File signal 2: autoint2.e
 Quant Time: May 16 11:58:34 2019
 Quant Method : Z:\pestpcbsrv\HPCHEM1\ECD_R\Method\PR051119.M
 Quant Title : GC EXTRACTABLES
 QLast Update : Sun May 12 00:51:44 2019
 Response via : Initial Calibration
 Integrator: ChemStation

Volume Inj. : 2 µl
 Signal #1 Phase : ZB-MR2 Signal #2 Phase: ZB-MR2
 Signal #1 Info : 30Mx0.32mmx 0.50µ Signal #2 Info : 30M x 0.32mm x 0.25µm

Compound	RT#1	RT#2	Resp#1	Resp#2	ng/ml	ng/ml
----------	------	------	--------	--------	-------	-------

System Monitoring Compounds

Target Compounds

7)	L1	AR-1016-5	5.332	0.000	11450148	0	184.615	N.D.	#
15)	L3	AR-1232-5	5.332	0.000	11450148	0	326.000	N.D.	#
20)	L4	AR-1242-5	5.677	6.710	659965	9137412	10.606	73.865	#
24)	L5	AR-1248-4	5.332	6.644	11450148	40024103	142.090	183.125	#
25)	L5	AR-1248-5	5.703	6.710	5328185	9137412	62.704	43.896	#
26)	L6	AR-1254-1	5.677	6.644	659965	40024103	4.458	166.181	#
27)	L6	AR-1254-2	5.823	6.858	2327956	2539231	18.079	6.651	#
28)	L6	AR-1254-3	6.188	7.234	3711617	7395920	16.814	17.501	#
29)	L6	AR-1254-4	6.454	7.506	838486	27838421	5.539	90.103	#
30)	L6	AR-1254-5	6.874	7.921	945270	3794159	4.824	11.357	#
31)	L7	AR-1260-1	6.318	0.000	941875	0	7.848	N.D.	#
32)	L7	AR-1260-2	6.532	0.000	2370124	0	15.120	N.D.	#
33)	L7	AR-1260-3	6.673	7.921	542185	3794159	4.101	17.378	#
36)	L8	AR-1262-1	6.874	7.921	945270	3794159	14.141	12.009	#
38)	L8	AR-1262-3	7.722	0.000	774183	0	6.180	N.D.	#
39)	L8	AR-1262-4	7.722	0.000	774183	0	3.330	N.D.	#
41)	L9	AR-1268-1	7.722	0.000	774183	0	1.777	N.D.	#
42)	L9	AR-1268-2	7.722	0.000	774183	0	1.969	N.D.	#

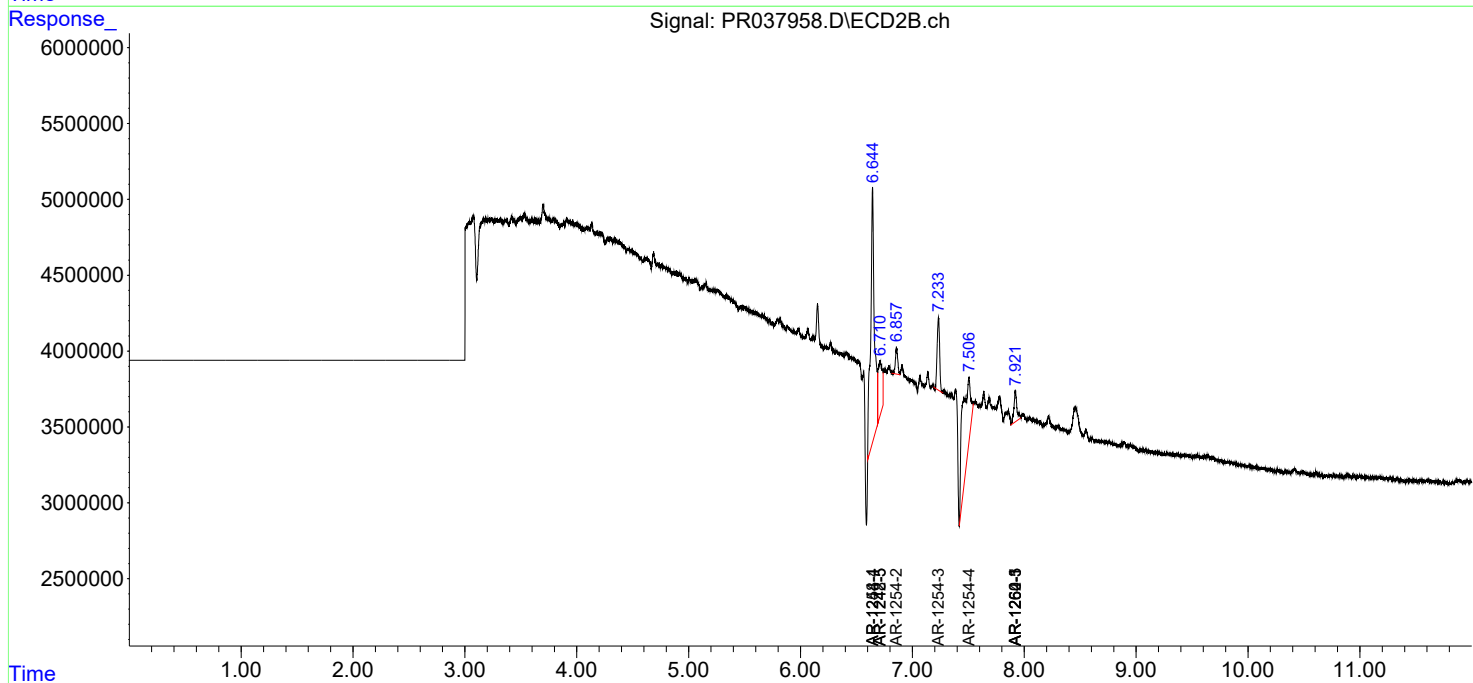
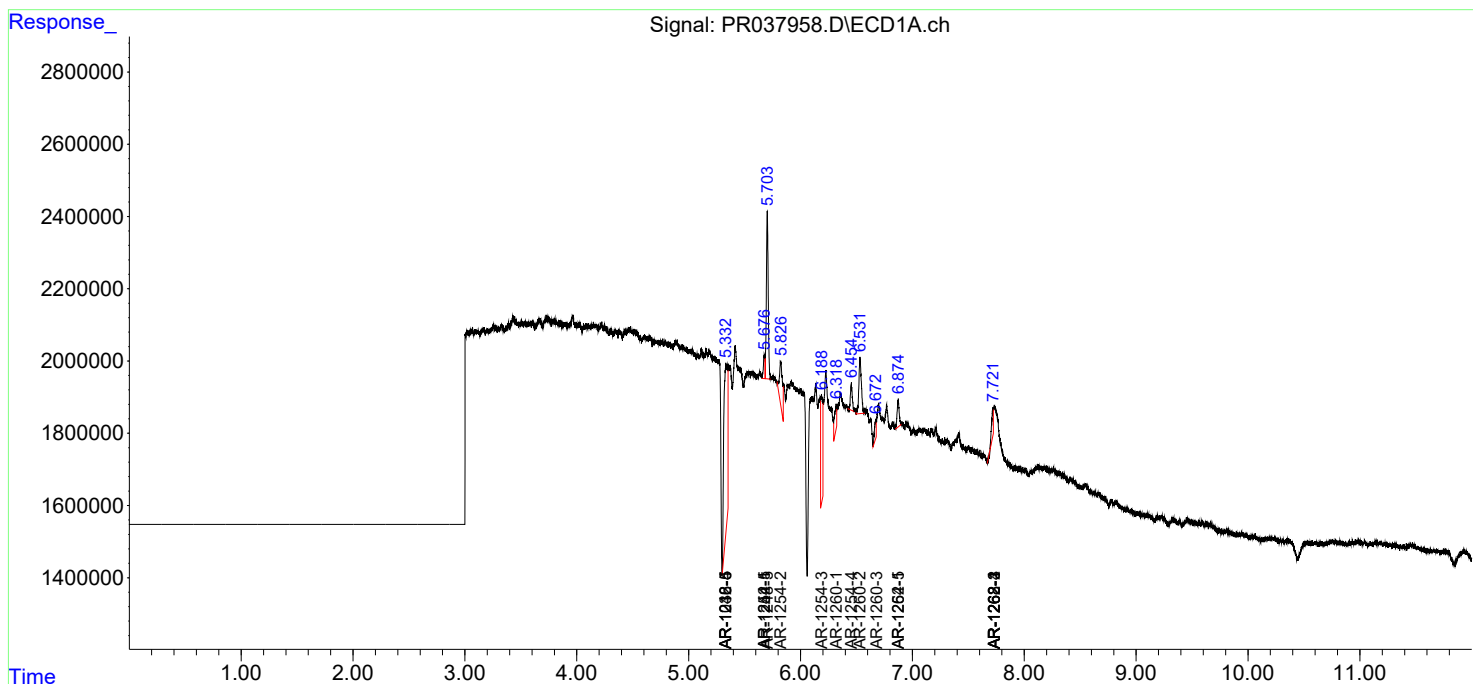
(f)=RT Delta > 1/2 Window (#)=Amounts differ by > 25% (m)=manual int.

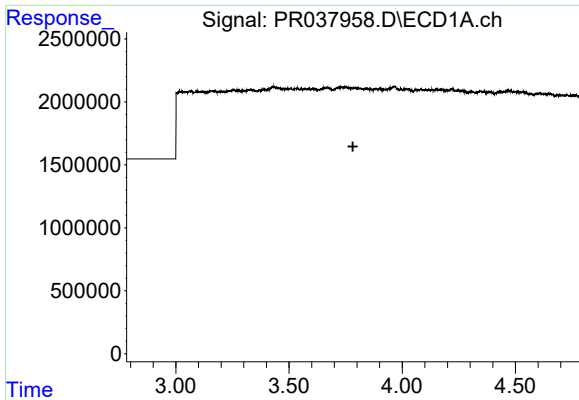
Data Path : Z:\pestpcbsrv\HPCHEM1\ECD_R\Data\PR051619\
 Data File : PR037958.D
 Signal(s) : Signal #1: ECD1A.ch Signal #2: ECD2B.ch
 Acq On : 16 May 2019 08:16
 Operator : SM\MA
 Sample : HEXANE
 Misc :
 ALS Vial : 1 Sample Multiplier: 1

Instrument :
 ECD_R
 ClientSampled :
 HEXANE

Integration File signal 1: autoint1.e
 Integration File signal 2: autoint2.e
 Quant Time: May 16 11:58:34 2019
 Quant Method : Z:\pestpcbsrv\HPCHEM1\ECD_R\Method\PR051119.M
 Quant Title : GC EXTRACTABLES
 QLast Update : Sun May 12 00:51:44 2019
 Response via : Initial Calibration
 Integrator: ChemStation

Volume Inj. : 2 µl
 Signal #1 Phase : ZB-MR1 Signal #2 Phase: ZB-MR2
 Signal #1 Info : 30Mx0.32mmx 0.50µ Signal #2 Info : 30M x 0.32mm x 0.25µm

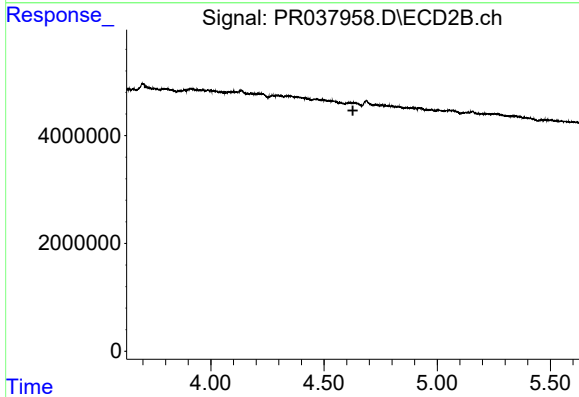




#1 Tetrachloro-m-xylene

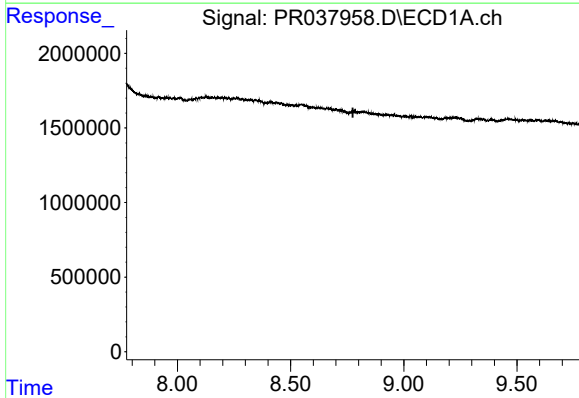
R.T.: 0.000 min
 Exp R.T. : 3.782 min
 Response: 0
 Conc: N.D.

Instrument :
 ECD_R
 ClientSampleId :
 HEXANE



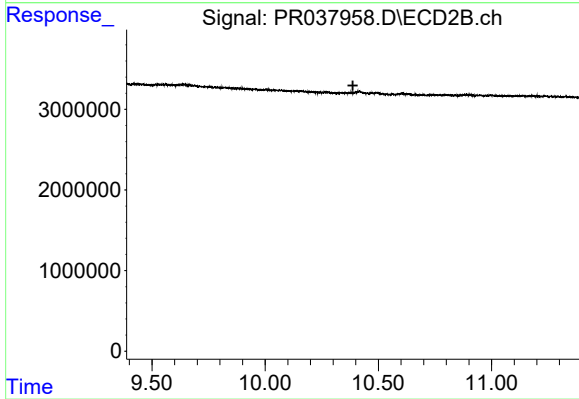
#1 Tetrachloro-m-xylene

R.T.: 0.000 min
 Exp R.T. : 4.628 min
 Response: 0
 Conc: N.D.



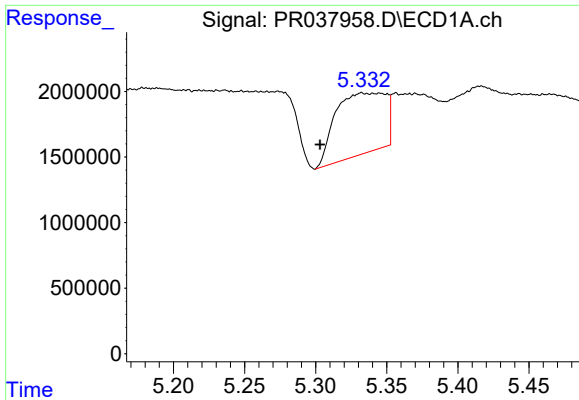
#2 Decachlorobiphenyl

R.T.: 0.000 min
 Exp R.T. : 8.775 min
 Response: 0
 Conc: N.D.



#2 Decachlorobiphenyl

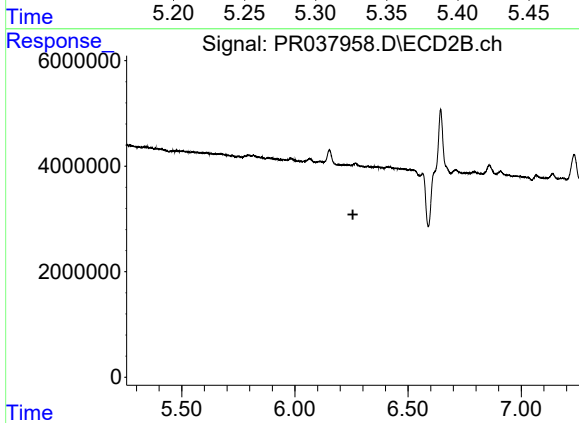
R.T.: 0.000 min
 Exp R.T. : 10.387 min
 Response: 0
 Conc: N.D.



#7 AR-1016-5

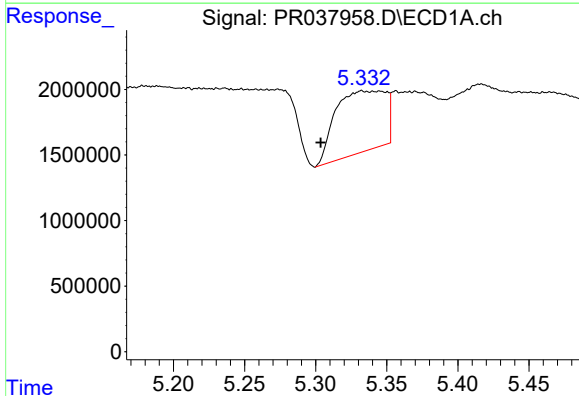
R.T.: 5.332 min
 Delta R.T.: 0.029 min
 Response: 11450148
 Conc: 184.62 ng/ml

Instrument :
 ECD_R
 ClientSampled :
 HEXANE



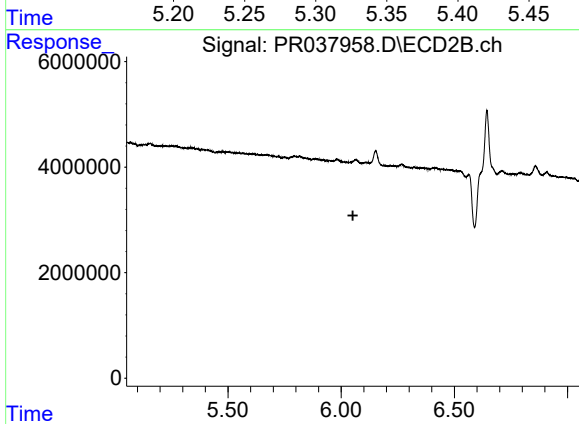
#7 AR-1016-5

R.T.: 0.000 min
 Exp R.T. : 6.256 min
 Response: 0
 Conc: N.D.



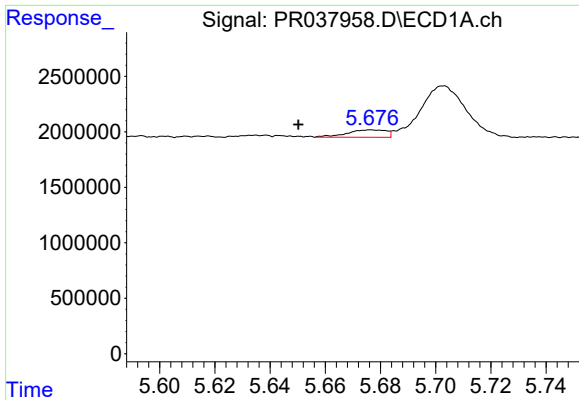
#15 AR-1232-5

R.T.: 5.332 min
 Delta R.T.: 0.029 min
 Response: 11450148
 Conc: 326.00 ng/ml



#15 AR-1232-5

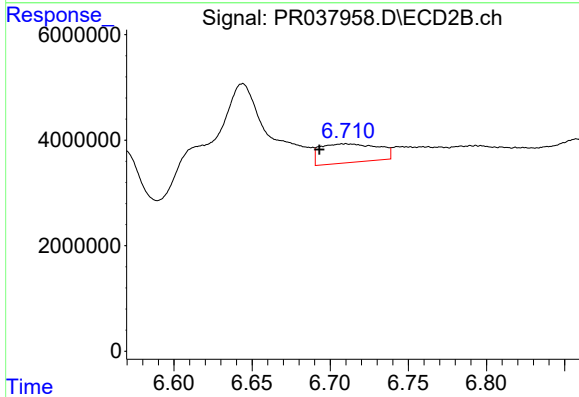
R.T.: 0.000 min
 Exp R.T. : 6.052 min
 Response: 0
 Conc: N.D.



#20 AR-1242-5

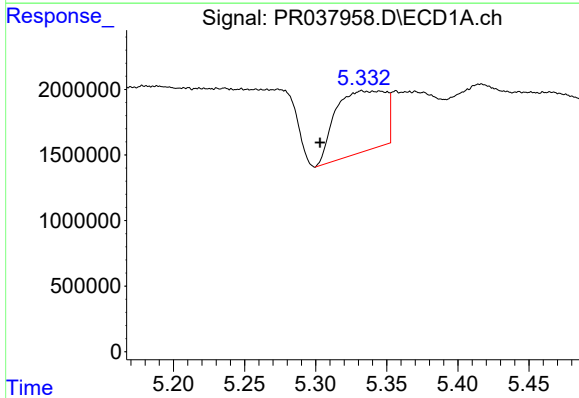
R.T.: 5.677 min
 Delta R.T.: 0.026 min
 Response: 659965
 Conc: 10.61 ng/ml

Instrument :
 ECD_R
 ClientSampleId :
 HEXANE



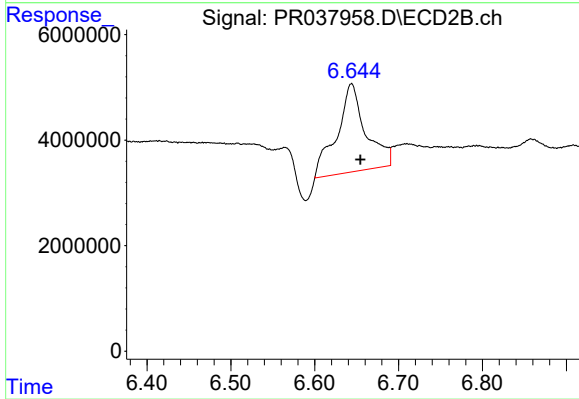
#20 AR-1242-5

R.T.: 6.710 min
 Delta R.T.: 0.017 min
 Response: 9137412
 Conc: 73.87 ng/ml



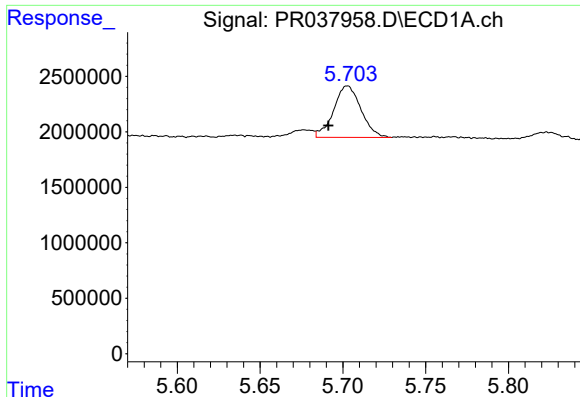
#24 AR-1248-4

R.T.: 5.332 min
 Delta R.T.: 0.029 min
 Response: 11450148
 Conc: 142.09 ng/ml



#24 AR-1248-4

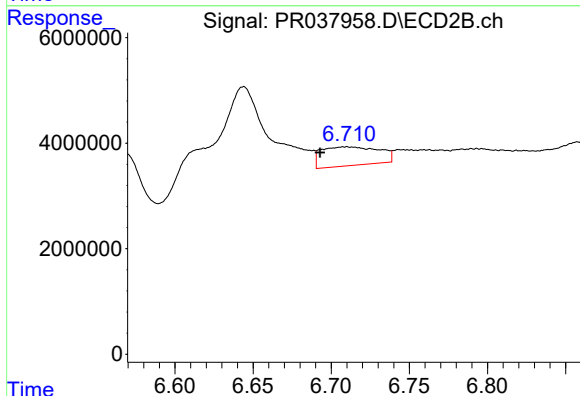
R.T.: 6.644 min
 Delta R.T.: -0.010 min
 Response: 40024103
 Conc: 183.13 ng/ml



#25 AR-1248-5

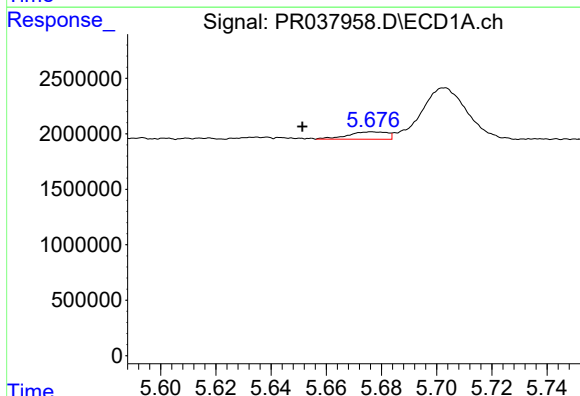
R.T.: 5.703 min
 Delta R.T.: 0.012 min
 Response: 5328185
 Conc: 62.70 ng/ml

Instrument :
 ECD_R
 ClientSampleId :
 HEXANE



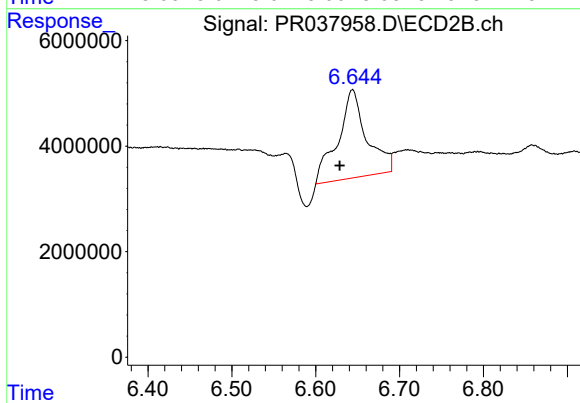
#25 AR-1248-5

R.T.: 6.710 min
 Delta R.T.: 0.017 min
 Response: 9137412
 Conc: 43.90 ng/ml



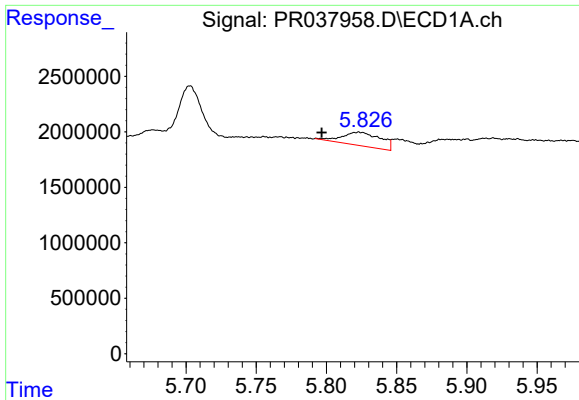
#26 AR-1254-1

R.T.: 5.677 min
 Delta R.T.: 0.025 min
 Response: 659965
 Conc: 4.46 ng/ml



#26 AR-1254-1

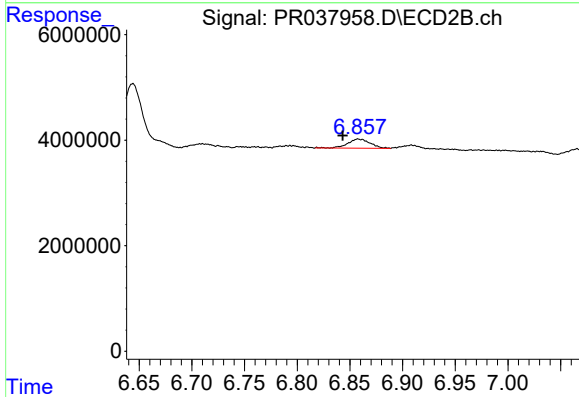
R.T.: 6.644 min
 Delta R.T.: 0.015 min
 Response: 40024103
 Conc: 166.18 ng/ml



#27 AR-1254-2

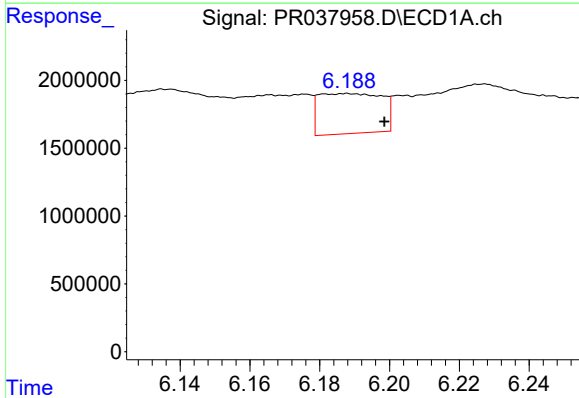
R.T.: 5.823 min
 Delta R.T.: 0.026 min
 Response: 2327956
 Conc: 18.08 ng/ml

Instrument :
 ECD_R
 ClientSampleId :
 HEXANE



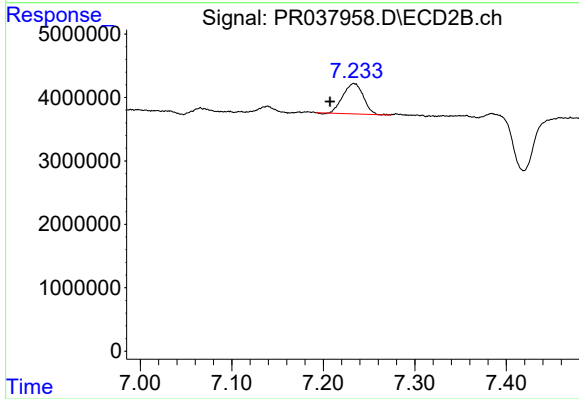
#27 AR-1254-2

R.T.: 6.858 min
 Delta R.T.: 0.015 min
 Response: 2539231
 Conc: 6.65 ng/ml



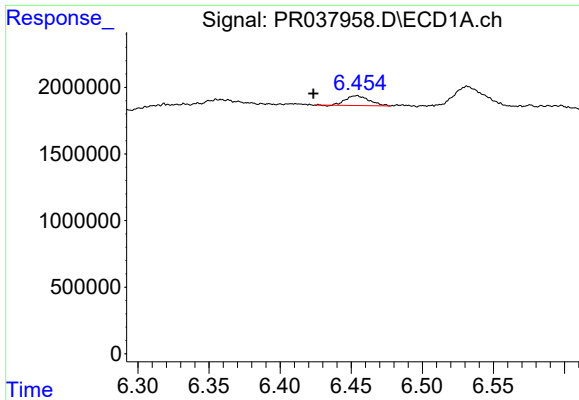
#28 AR-1254-3

R.T.: 6.188 min
 Delta R.T.: -0.011 min
 Response: 3711617
 Conc: 16.81 ng/ml



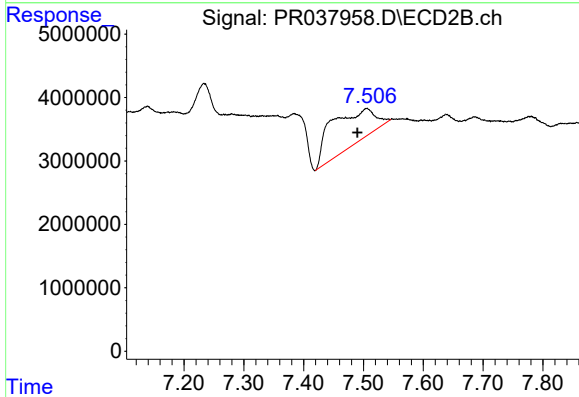
#28 AR-1254-3

R.T.: 7.234 min
 Delta R.T.: 0.026 min
 Response: 7395920
 Conc: 17.50 ng/ml

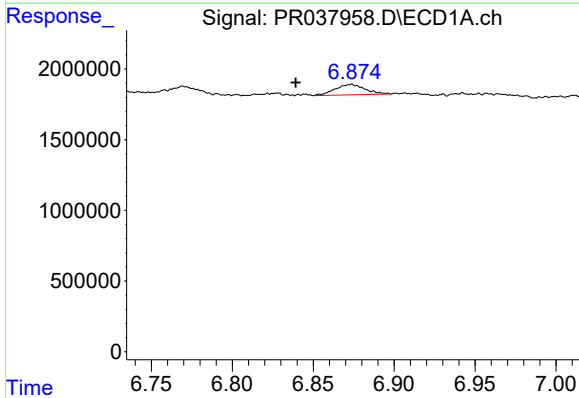


#29 AR-1254-4
 R.T.: 6.454 min
 Delta R.T.: 0.031 min
 Response: 838486
 Conc: 5.54 ng/ml

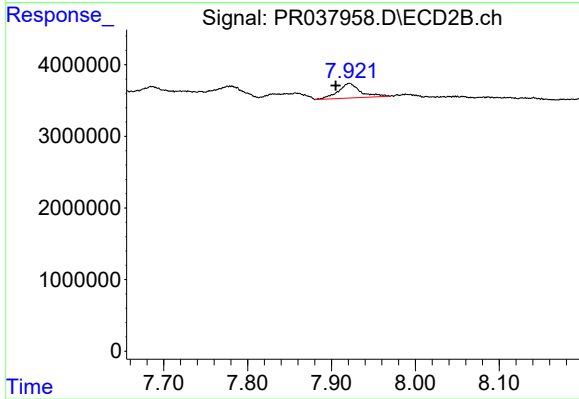
Instrument :
 ECD_R
ClientSampleId :
 HEXANE



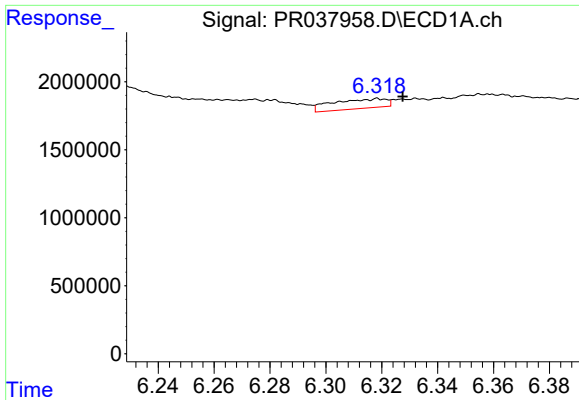
#29 AR-1254-4
 R.T.: 7.506 min
 Delta R.T.: 0.016 min
 Response: 27838421
 Conc: 90.10 ng/ml



#30 AR-1254-5
 R.T.: 6.874 min
 Delta R.T.: 0.035 min
 Response: 945270
 Conc: 4.82 ng/ml



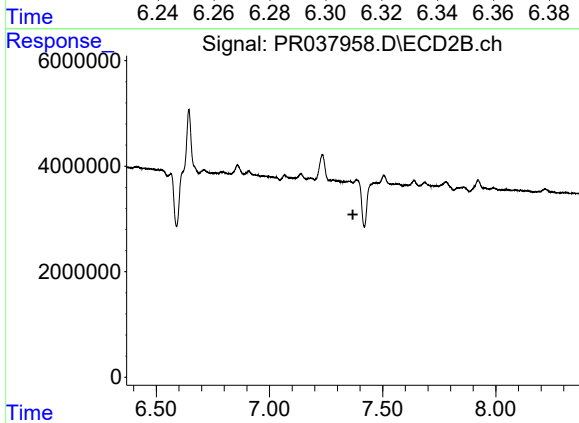
#30 AR-1254-5
 R.T.: 7.921 min
 Delta R.T.: 0.016 min
 Response: 3794159
 Conc: 11.36 ng/ml



#31 AR-1260-1

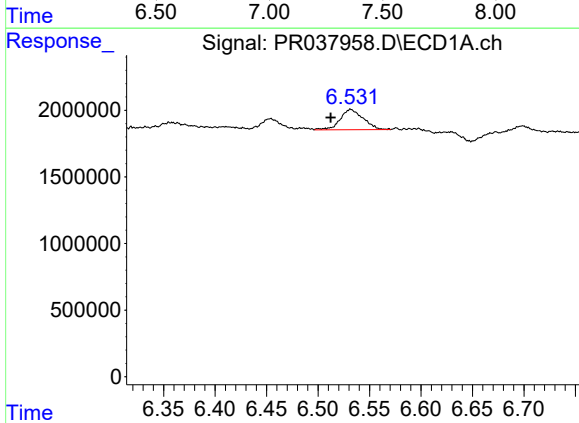
R.T.: 6.318 min
 Delta R.T.: -0.009 min
 Response: 941875
 Conc: 7.85 ng/ml

Instrument :
 ECD_R
ClientSampled :
 HEXANE



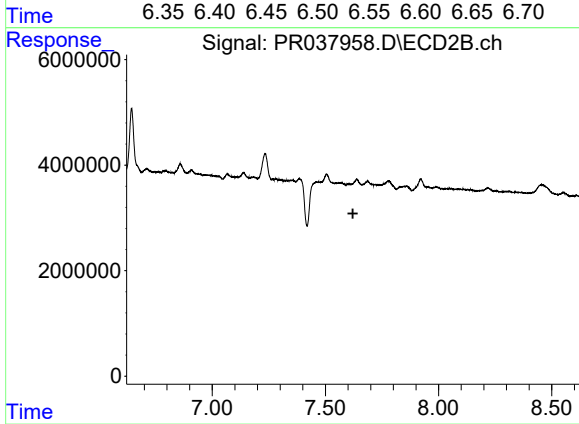
#31 AR-1260-1

R.T.: 0.000 min
 Exp R.T. : 7.369 min
 Response: 0
 Conc: N.D.



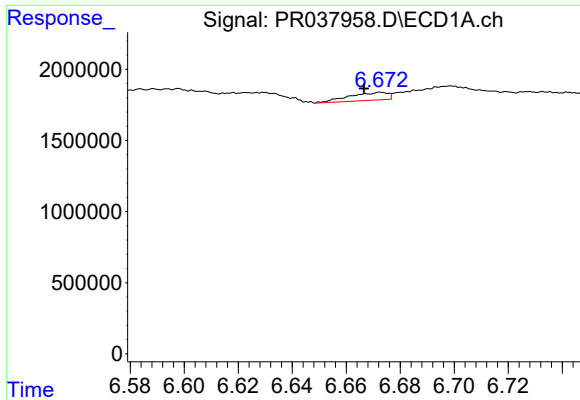
#32 AR-1260-2

R.T.: 6.532 min
 Delta R.T.: 0.019 min
 Response: 2370124
 Conc: 15.12 ng/ml



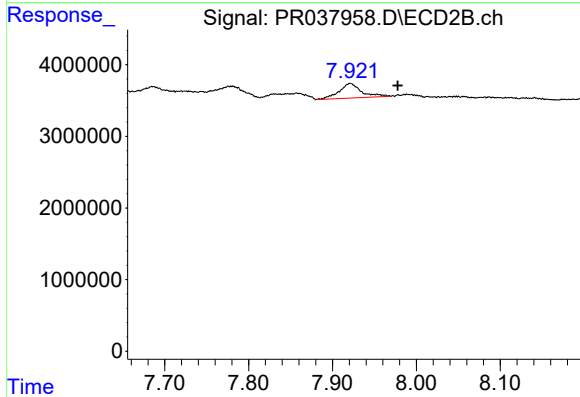
#32 AR-1260-2

R.T.: 0.000 min
 Exp R.T. : 7.622 min
 Response: 0
 Conc: N.D.

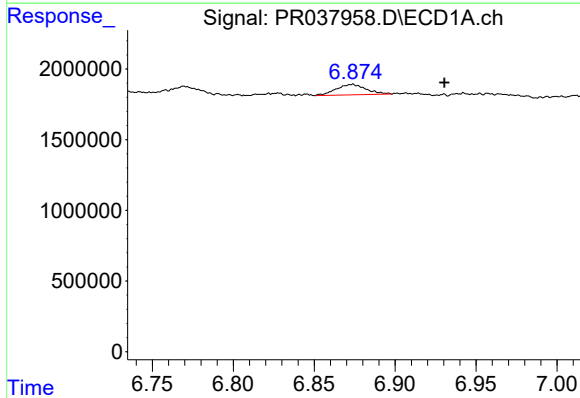


#33 AR-1260-3
R.T.: 6.673 min
Delta R.T.: 0.006 min
Response: 542185
Conc: 4.10 ng/ml

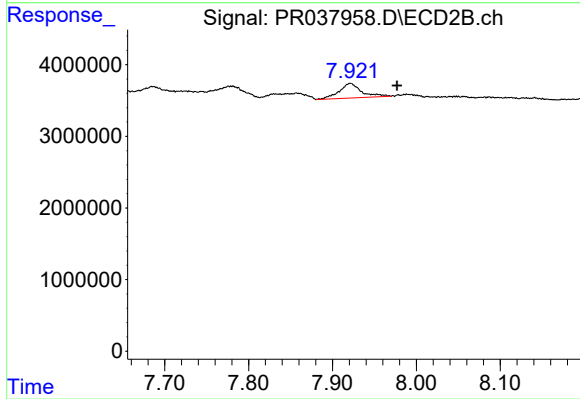
Instrument :
ECD_R
ClientSampleId :
HEXANE



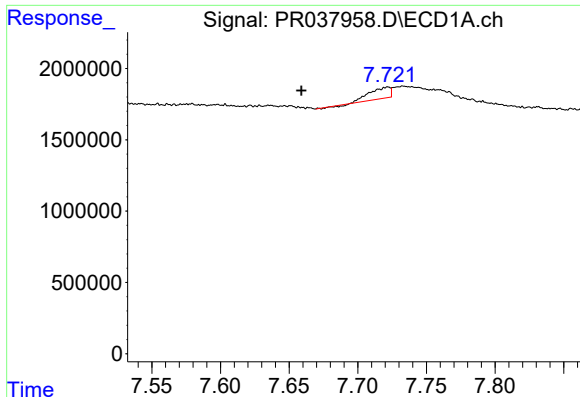
#33 AR-1260-3
R.T.: 7.921 min
Delta R.T.: -0.056 min
Response: 3794159
Conc: 17.38 ng/ml



#36 AR-1262-1
R.T.: 6.874 min
Delta R.T.: -0.056 min
Response: 945270
Conc: 14.14 ng/ml



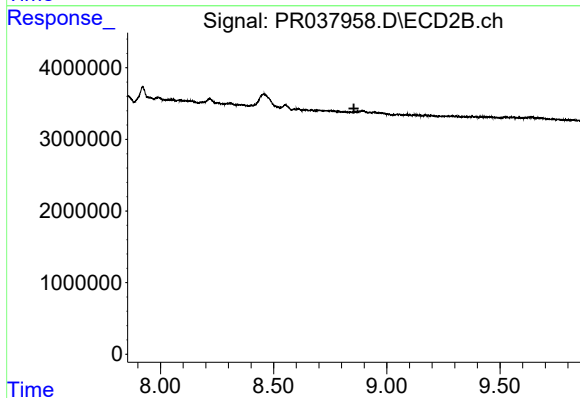
#36 AR-1262-1
R.T.: 7.921 min
Delta R.T.: -0.056 min
Response: 3794159
Conc: 12.01 ng/ml



#38 AR-1262-3

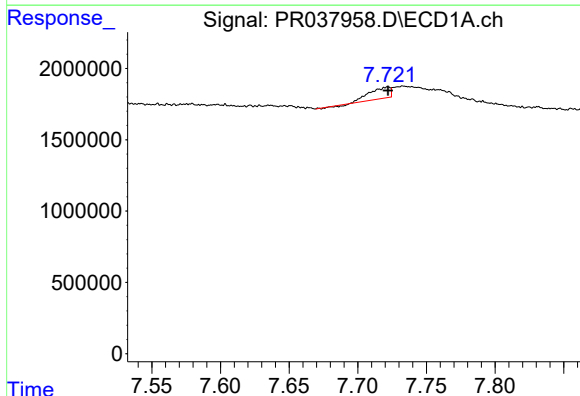
R.T.: 7.722 min
 Delta R.T.: 0.063 min
 Response: 774183
 Conc: 6.18 ng/ml

Instrument :
 ECD_R
 ClientSampleId :
 HEXANE



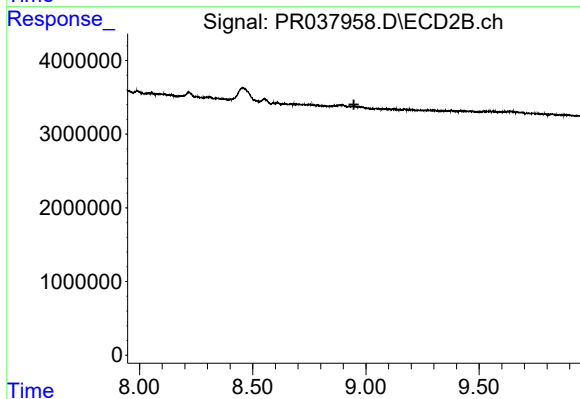
#38 AR-1262-3

R.T.: 0.000 min
 Exp R.T. : 8.854 min
 Response: 0
 Conc: N.D.



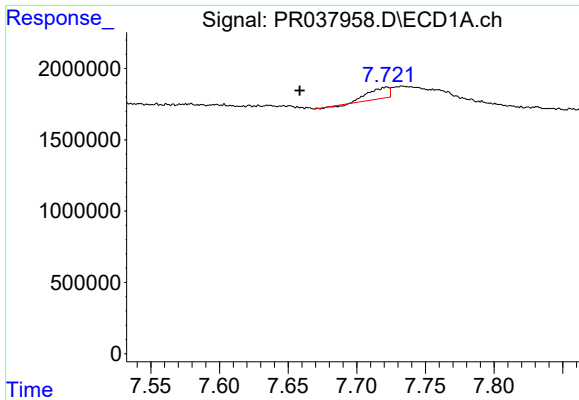
#39 AR-1262-4

R.T.: 7.722 min
 Delta R.T.: 0.000 min
 Response: 774183
 Conc: 3.33 ng/ml



#39 AR-1262-4

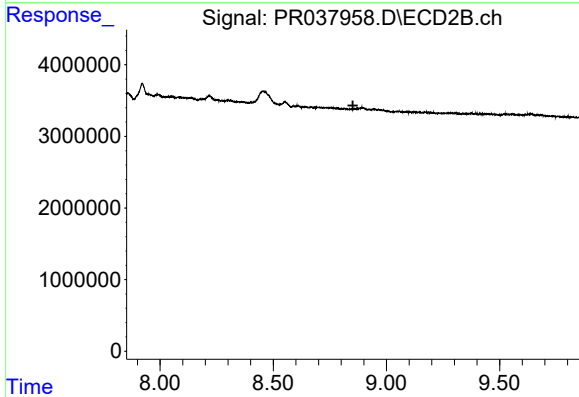
R.T.: 0.000 min
 Exp R.T. : 8.947 min
 Response: 0
 Conc: N.D.



#41 AR-1268-1

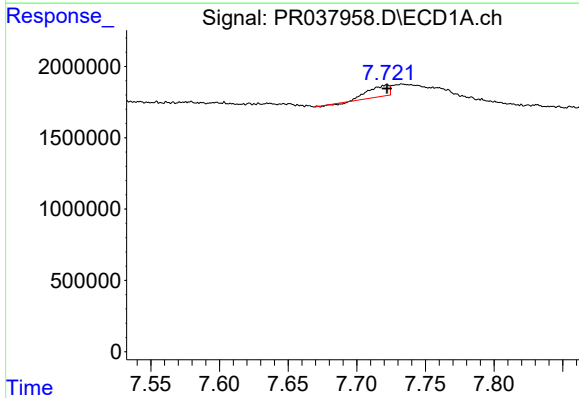
R.T.: 7.722 min
 Delta R.T.: 0.064 min
 Response: 774183
 Conc: 1.78 ng/ml

Instrument :
 ECD_R
 ClientSampleId :
 HEXANE



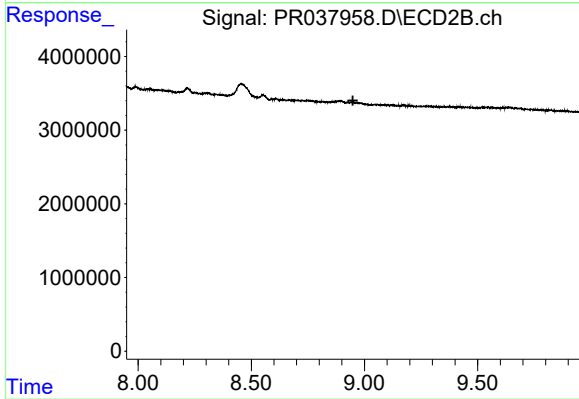
#41 AR-1268-1

R.T.: 0.000 min
 Exp R.T. : 8.852 min
 Response: 0
 Conc: N.D.



#42 AR-1268-2

R.T.: 7.722 min
 Delta R.T.: 0.000 min
 Response: 774183
 Conc: 1.97 ng/ml



#42 AR-1268-2

R.T.: 0.000 min
 Exp R.T. : 8.949 min
 Response: 0
 Conc: N.D.