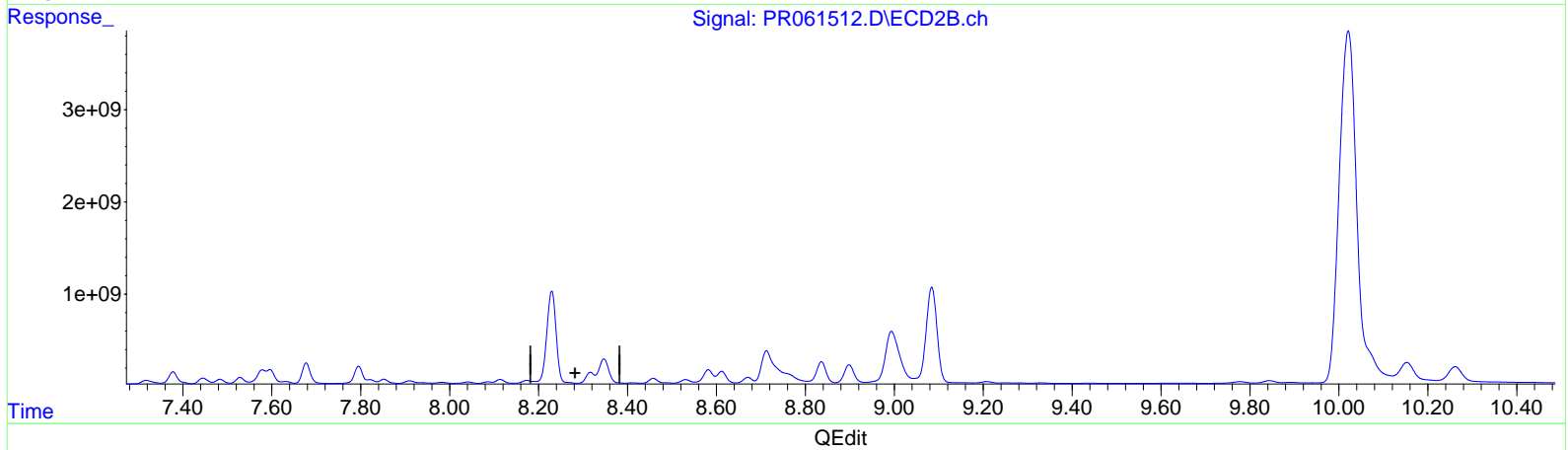
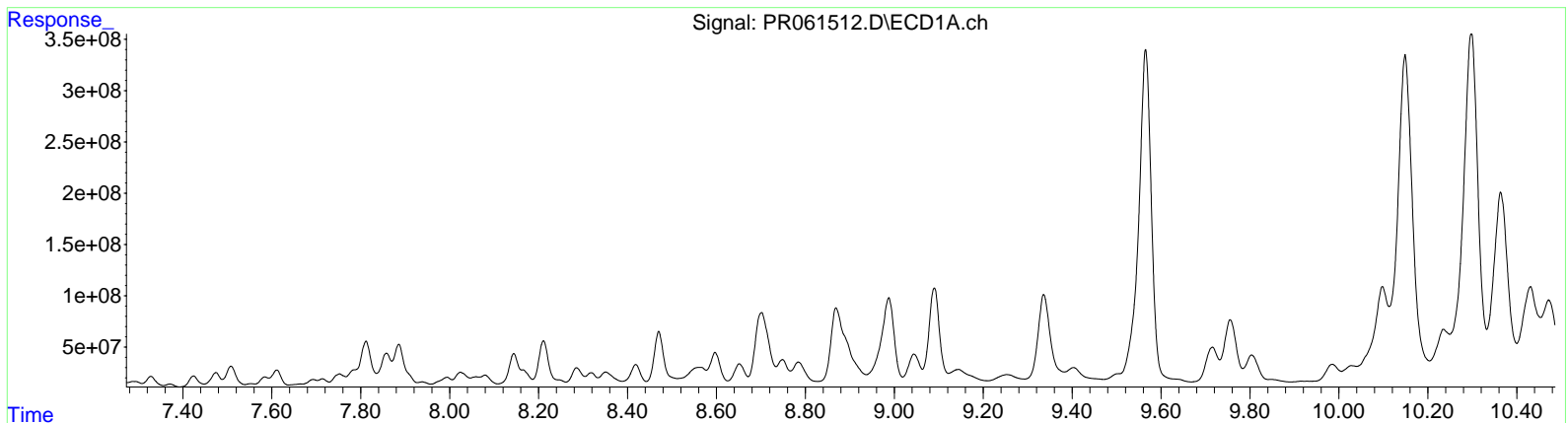


Data Path : Z:\pestpcbsrv\HPCHEM1\ECD_R\Data\PR051723\
 Data File : PR061512.D
 Signal(s) : Signal #1: ECD1A.ch Signal #2: ECD2B.ch
 Acq On : 17 May 2023 14:07
 Operator : YP\AJ
 Sample : 02664-10
 Misc :
 ALS Vial : 20 Sample Multiplier: 1

Integration File signal 1: autoint1.e
 Integration File signal 2: autoint2.e
 Quant Time: May 17 21:37:27 2023
 Quant Method : Z:\pestpcbsrv\HPCHEM1\ECD_R\Method\PR050923CLP.M
 Quant Title : GC EXTRACTABLES
 QLast Update : Wed May 10 07:27:40 2023
 Response via : Initial Calibration
 Integrator: ChemStation

Volume Inj. : 1 µl
 Signal #1 Phase : ZB MR1 Signal #2 Phase: ZB MR2
 Signal #1 Info : 30Mx0.32mmx 0.5µm Signal #2 Info : 30M x 0.32mm x 0.25µm



(2) Decachlorobiphenyl (SA)

0.000min 0.000 ng/ml

response 0

(2) Decachlorobiphenyl #2 (SA)

8.317min -6.180 ng/ml

response -19851902