

Data Path : Z:\pestpcbsrv\HPCHEM1\ECD\_R\Data\PR051923\  
 Data File : PR061533.D  
 Signal(s) : Signal #1: ECD1A.ch Signal #2: ECD2B.ch  
 Acq On : 19 May 2023 12:07  
 Operator : YP\AJ  
 Sample : 02789-09  
 Misc :  
 ALS Vial : 14 Sample Multiplier: 1

Instrument :  
 ECD\_R  
 ClientSampleId :

Integration File signal 1: autoint1.e  
 Integration File signal 2: autoint2.e  
 Quant Time: May 19 21:56:58 2023  
 Quant Method : Z:\pestpcbsrv\HPCHEM1\ECD\_R\Method\PR050923CLP.M  
 Quant Title : GC EXTRACTABLES  
 QLast Update : Wed May 10 07:27:40 2023  
 Response via : Initial Calibration  
 Integrator: ChemStation

Volume Inj. : 1 µl  
 Signal #1 Phase : ZB MR1 Signal #2 Phase: ZB MR2  
 Signal #1 Info : 30Mx0.32mmx 0.5µm Signal #2 Info : 30M x 0.32mm x 0.25µm

Compound	RT#1	RT#2	Resp#1	Resp#2	ng/ml	ng/ml
System Monitoring Compounds						
1) SA Tetrachlo...	3.696	2.967	48030880	56985135	17.151	19.070
2) SA Decachlor...	9.633	8.263	43722449	93600247	31.639	29.137
Target Compounds						
3) L1 AR-1016-1	0.000	4.112	0	241477	N.D.	2.319 #
4) L1 AR-1016-2	0.000	4.129	0	54118	N.D.	0.366 #
5) L1 AR-1016-3	5.024	4.279	653943	397684	8.637	5.030 #
6) L1 AR-1016-4	0.000	4.347	0	224081	N.D.	3.689 #
7) L1 AR-1016-5	0.000	4.564	0	242249	N.D.	2.925 #
8) L2 AR-1221-1	0.000	3.209	0	96921	N.D.	2.495 #
9) L2 AR-1221-2	4.008	3.273	616646	815297	26.065	29.722
10) L2 AR-1221-3	0.000	3.370	0	45005	N.D.	0.504 #
11) L3 AR-1232-1	0.000	3.370	0	45005	N.D.	0.626 #
12) L3 AR-1232-2	0.000	4.129	0	54118	N.D.	0.816 #
13) L3 AR-1232-3	0.000	4.279	0	397684	N.D.	11.132 #
14) L3 AR-1232-4	0.000	4.388	0	153175	N.D.	5.049 #
15) L3 AR-1232-5	0.000	4.564	0	242249	N.D.	6.782 #
16) L4 AR-1242-1	0.000	4.112	0	241477	N.D.	2.726 #
17) L4 AR-1242-2	0.000	4.129	0	54118	N.D.	0.430 #
18) L4 AR-1242-3	5.024	4.279	653943	397684	9.913	5.793 #
19) L4 AR-1242-4	0.000	4.388	0	153175	N.D.	2.357 #
20) L4 AR-1242-5	0.000	4.935	0	251003	N.D.	2.973 #
21) L5 AR-1248-1	0.000	4.112	0	241477	N.D.	3.535 #
22) L5 AR-1248-2	0.000	4.347	0	224081	N.D.	2.317 #
23) L5 AR-1248-3	0.000	4.388	0	153175	N.D.	1.544 #
24) L5 AR-1248-4	0.000	4.564	0	242249	N.D.	2.003 #
25) L5 AR-1248-5	0.000	4.978	0	523507	N.D.	4.343 #
26) L6 AR-1254-1	0.000	4.935	0	251003	N.D.	1.362 #
27) L6 AR-1254-2	0.000	5.057f	0	445125	N.D.	2.811 #
28) L6 AR-1254-3	0.000	5.523	0	731901	N.D.	2.748 #
29) L6 AR-1254-4	0.000	5.769	0	259963	N.D.	1.546 #
30) L6 AR-1254-5	7.250	6.218	243294	2054816	2.273	8.346 #
31) L7 AR-1260-1	0.000	5.677	0	401277	N.D.	2.353 #
32) L7 AR-1260-2	6.995f	5.892	4064050	375239	34.529	1.794 #
33) L7 AR-1260-3	0.000	6.042	0	9239065	N.D.	44.491 #
34) L7 AR-1260-4	0.000	6.513f	0	2951396	N.D.	17.460 #
35) L7 AR-1260-5	7.909	6.812	1809692	1742227	10.231	4.297 #
36) L8 AR-1262-1	0.000	6.282	0	680327	N.D.	2.573 #
37) L8 AR-1262-2	7.909	6.812	1809692	1742227	8.013	3.521 #
38) L8 AR-1262-3	8.204	7.133	1393039	154716	9.056	0.890 #
39) L8 AR-1262-4	0.000	7.133f	0	154716	N.D.	0.429 #
41) L9 AR-1268-1	8.204	7.133	1393039	154716	6.905	0.373 #
42) L9 AR-1268-2	0.000	7.133f	0	154716	N.D.	0.404 #

Data Path : Z:\pestpcbsrv\HPCHEM1\ECD\_R\Data\PR051923\  
 Data File : PR061533.D  
 Signal(s) : Signal #1: ECD1A.ch Signal #2: ECD2B.ch  
 Acq On : 19 May 2023 12:07  
 Operator : YP\AJ  
 Sample : 02789-09  
 Misc :  
 ALS Vial : 14 Sample Multiplier: 1

Instrument :  
 ECD\_R  
 ClientSampleId :

Integration File signal 1: autoint1.e  
 Integration File signal 2: autoint2.e  
 Quant Time: May 19 21:56:58 2023  
 Quant Method : Z:\pestpcbsrv\HPCHEM1\ECD\_R\Method\PR050923CLP.M  
 Quant Title : GC EXTRACTABLES  
 QLast Update : Wed May 10 07:27:40 2023  
 Response via : Initial Calibration  
 Integrator: ChemStation

Volume Inj. : 1 µl  
 Signal #1 Phase : ZB MR1 Signal #2 Phase: ZB MR2  
 Signal #1 Info : 30Mx0.32mmx 0.5µm Signal #2 Info : 30M x 0.32mm x 0.25µm

	Compound	RT#1	RT#2	Resp#1	Resp#2	ng/ml	ng/ml
43)	L9 AR-1268-3	0.000	7.354f	0	466788	N.D.	1.397 #
45)	L9 AR-1268-5	9.322	8.013	907726	881530	1.951	0.819 #

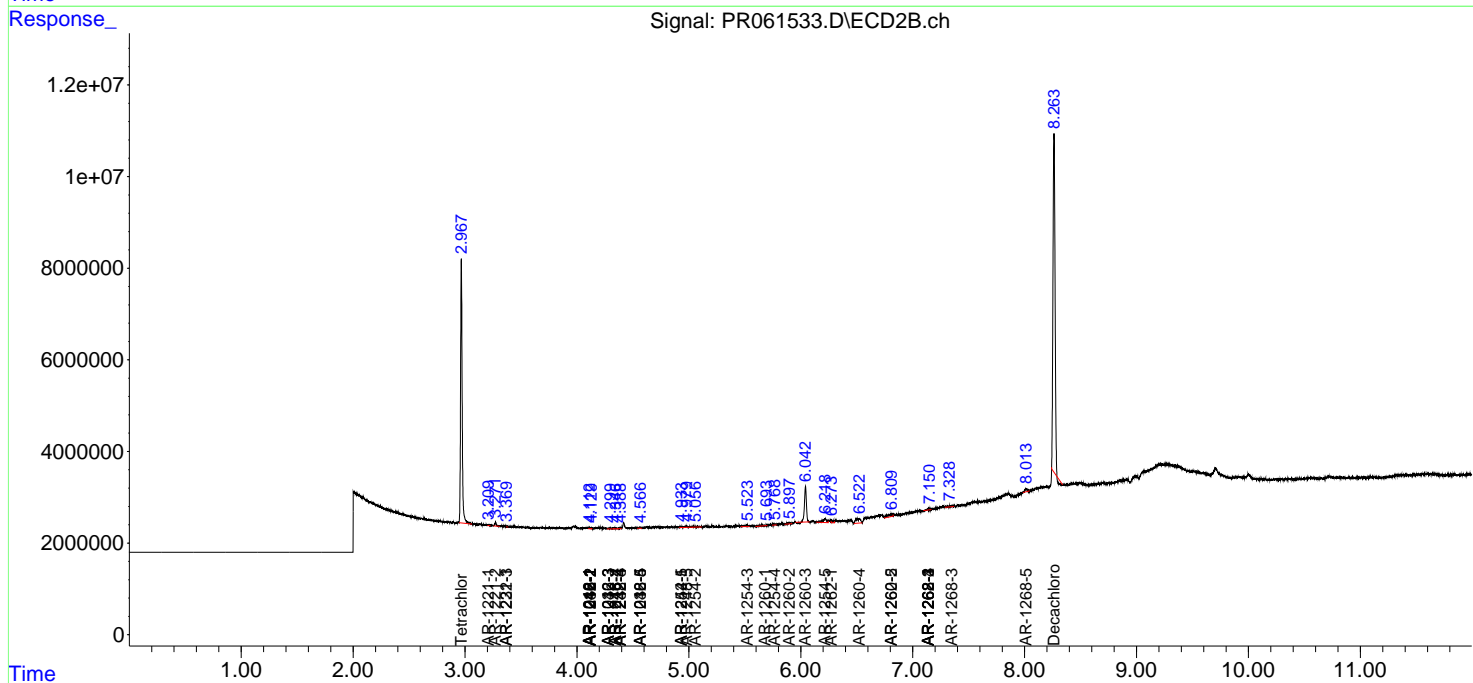
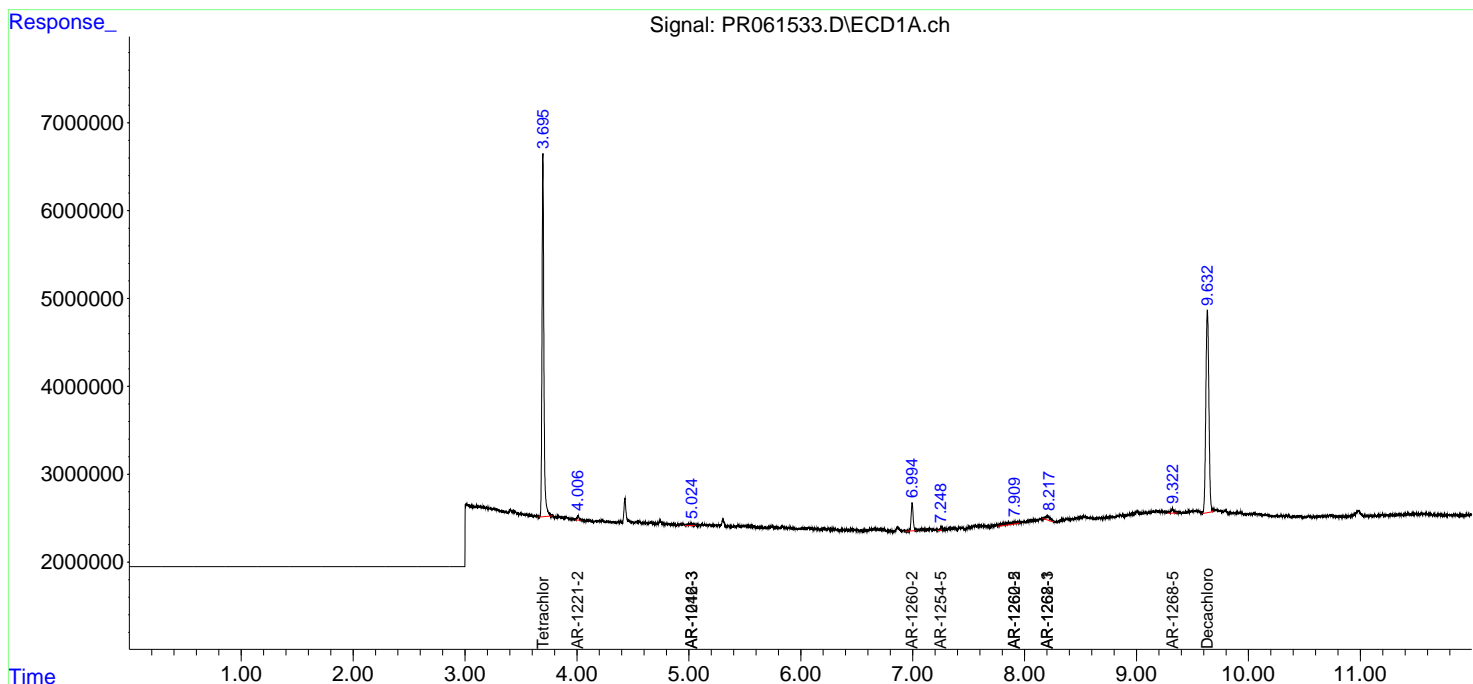
(f)=RT Delta > 1/2 Window (#)=Amounts differ by > 25% (m)=manual int.

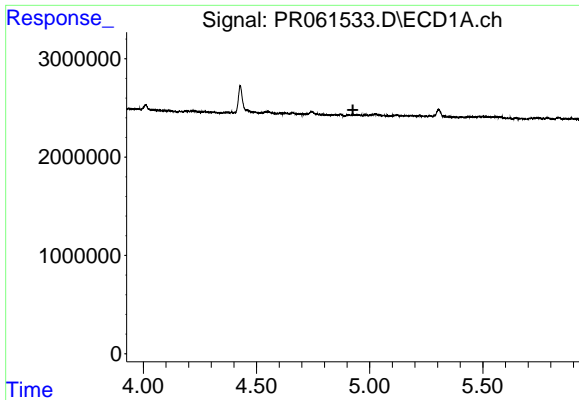
Data Path : Z:\pestpcbsrv\HPCHEM1\ECD\_R\Data\PR051923\  
 Data File : PR061533.D  
 Signal(s) : Signal #1: ECD1A.ch Signal #2: ECD2B.ch  
 Acq On : 19 May 2023 12:07  
 Operator : YP\AJ  
 Sample : 02789-09  
 Misc :  
 ALS Vial : 14 Sample Multiplier: 1

Instrument :  
 ECD\_R  
 ClientSampleId :

Integration File signal 1: autoint1.e  
 Integration File signal 2: autoint2.e  
 Quant Time: May 19 21:56:58 2023  
 Quant Method : Z:\pestpcbsrv\HPCHEM1\ECD\_R\Method\PR050923CLP.M  
 Quant Title : GC EXTRACTABLES  
 QLast Update : Wed May 10 07:27:40 2023  
 Response via : Initial Calibration  
 Integrator: ChemStation

Volume Inj. : 1 µl  
 Signal #1 Phase : ZB MR1 Signal #2 Phase: ZB MR2  
 Signal #1 Info : 30Mx0.32mmx 0.5µm Signal #2 Info : 30M x 0.32mm x 0.25µm

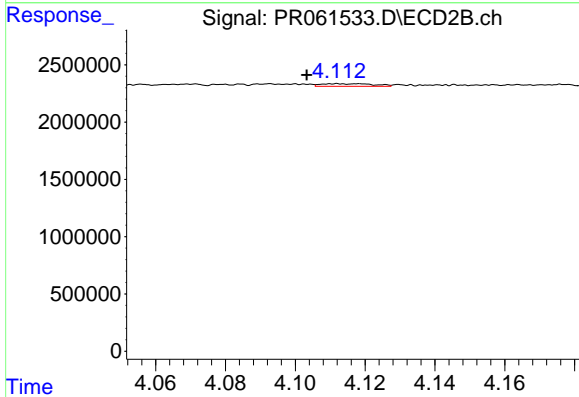




#3 AR-1016-1

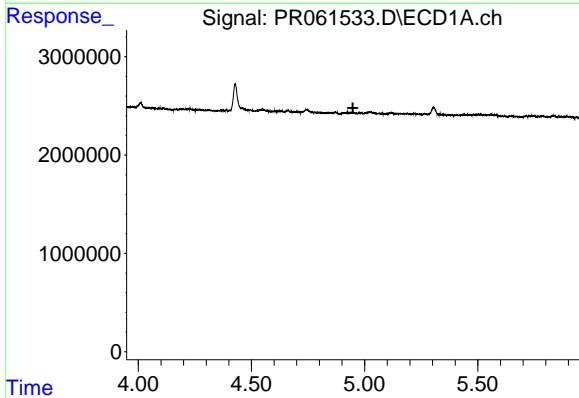
R.T.: 0.000 min  
 Exp R.T.: 4.926 min  
 Response: 0  
 Conc: N.D.

Instrument :  
 ECD\_R  
 ClientSampleId :



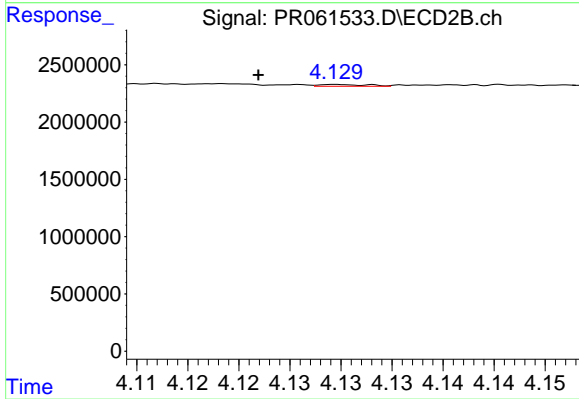
#3 AR-1016-1

R.T.: 4.112 min  
 Delta R.T.: 0.009 min  
 Response: 241477  
 Conc: 2.32 ng/ml



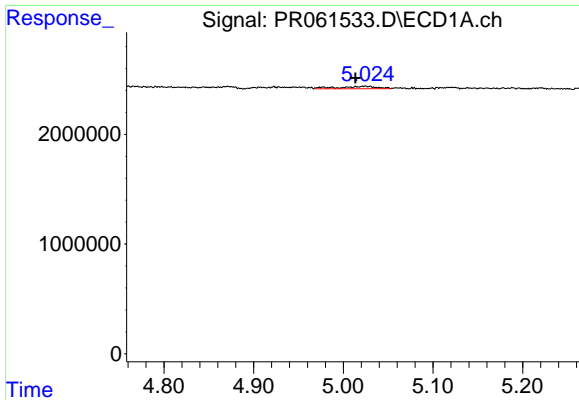
#4 AR-1016-2

R.T.: 0.000 min  
 Exp R.T.: 4.948 min  
 Response: 0  
 Conc: N.D.



#4 AR-1016-2

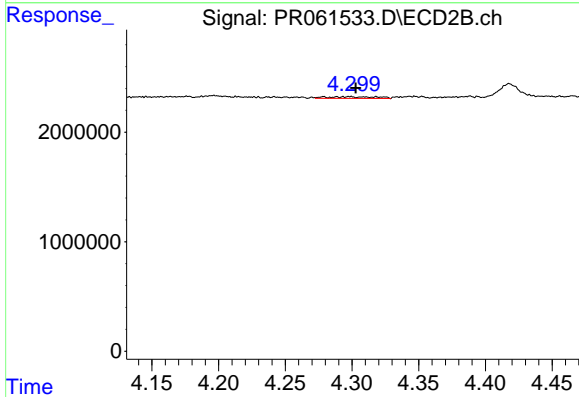
R.T.: 4.129 min  
 Delta R.T.: 0.007 min  
 Response: 54118  
 Conc: 0.37 ng/ml



#5 AR-1016-3

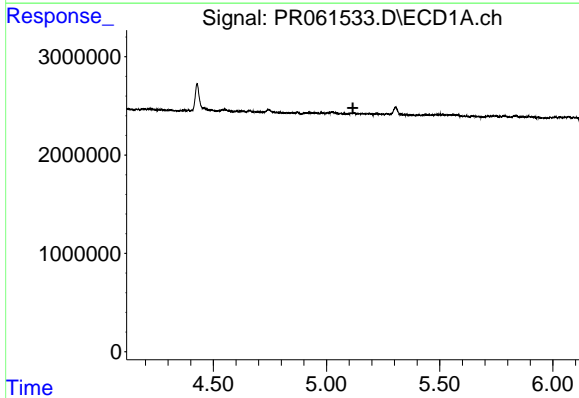
R.T.: 5.024 min  
 Delta R.T.: 0.011 min  
 Response: 653943  
 Conc: 8.64 ng/ml

Instrument :  
 ECD\_R  
 ClientSampleId :



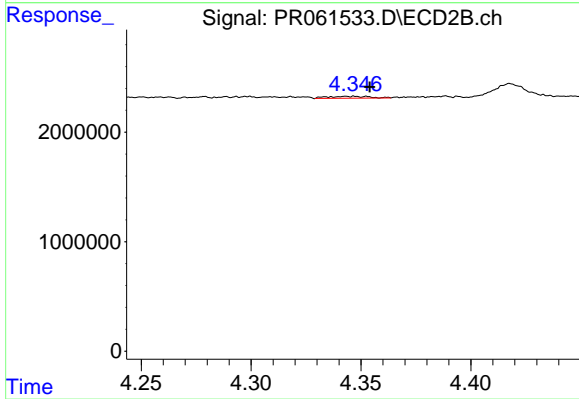
#5 AR-1016-3

R.T.: 4.279 min  
 Delta R.T.: -0.024 min  
 Response: 397684  
 Conc: 5.03 ng/ml



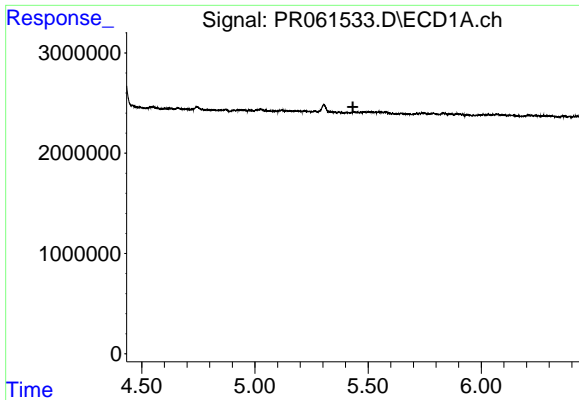
#6 AR-1016-4

R.T.: 0.000 min  
 Exp R.T. : 5.116 min  
 Response: 0  
 Conc: N.D.



#6 AR-1016-4

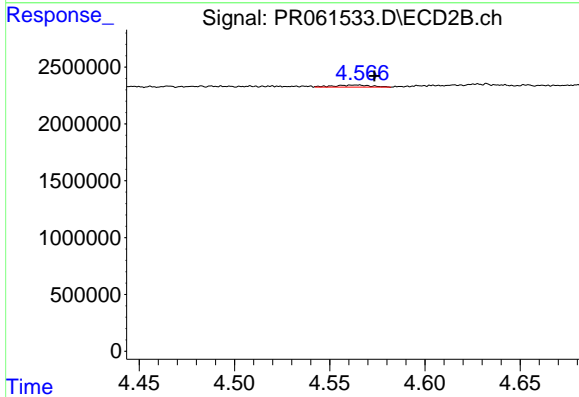
R.T.: 4.347 min  
 Delta R.T.: -0.007 min  
 Response: 224081  
 Conc: 3.69 ng/ml



#7 AR-1016-5

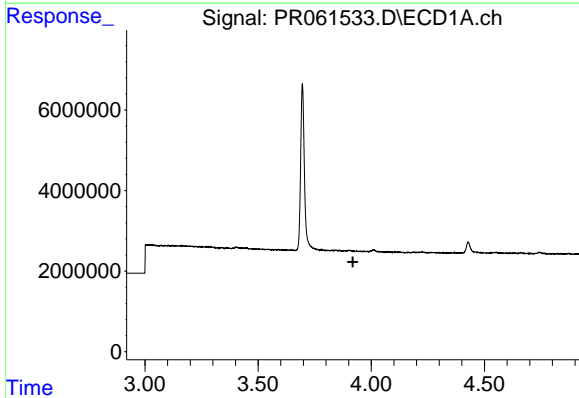
R.T.: 0.000 min  
 Exp R.T.: 5.433 min  
 Response: 0  
 Conc: N.D.

Instrument :  
 ECD\_R  
 ClientSampleId :



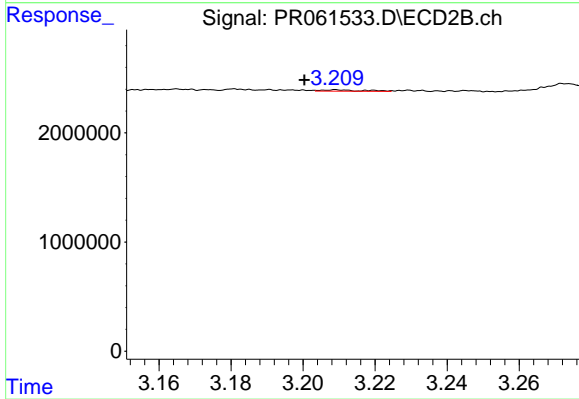
#7 AR-1016-5

R.T.: 4.564 min  
 Delta R.T.: -0.009 min  
 Response: 242249  
 Conc: 2.92 ng/ml



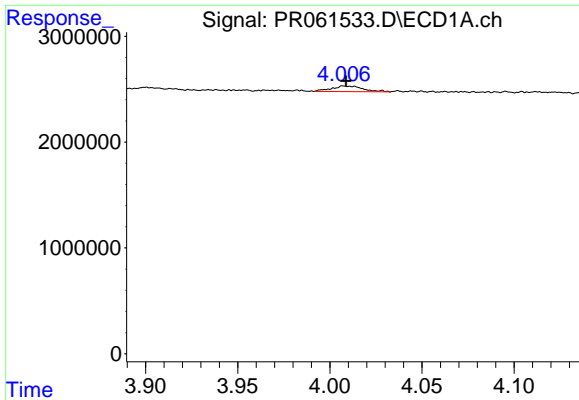
#8 AR-1221-1

R.T.: 0.000 min  
 Exp R.T.: 3.919 min  
 Response: 0  
 Conc: N.D.



#8 AR-1221-1

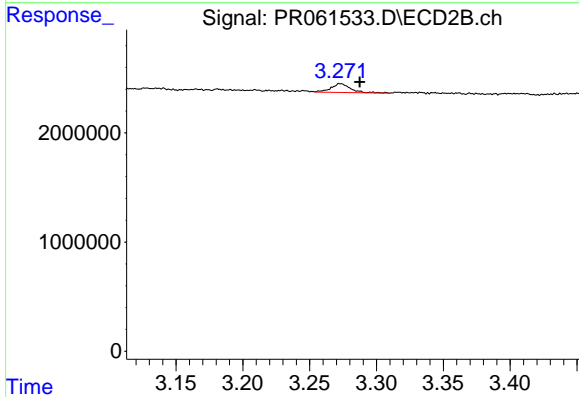
R.T.: 3.209 min  
 Delta R.T.: 0.009 min  
 Response: 96921  
 Conc: 2.49 ng/ml



#9 AR-1221-2

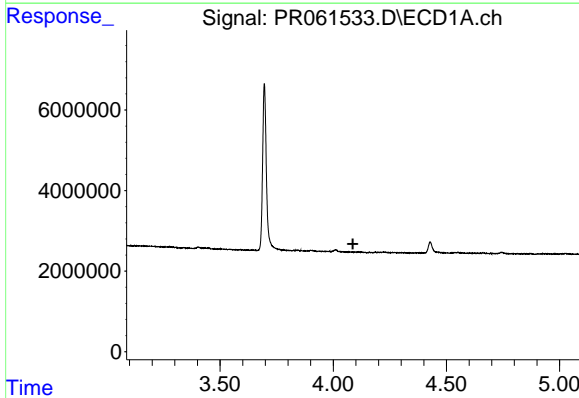
R.T.: 4.008 min  
 Delta R.T.: 0.000 min  
 Response: 616646  
 Conc: 26.07 ng/ml

Instrument :  
 ECD\_R  
 ClientSampleId :



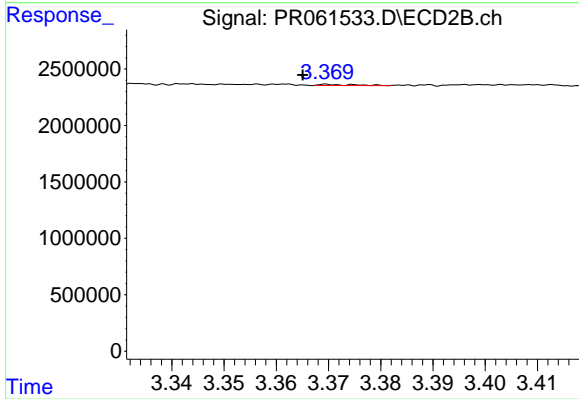
#9 AR-1221-2

R.T.: 3.273 min  
 Delta R.T.: -0.014 min  
 Response: 815297  
 Conc: 29.72 ng/ml



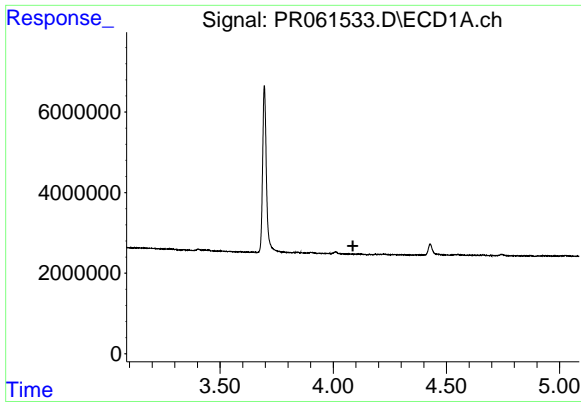
#10 AR-1221-3

R.T.: 0.000 min  
 Exp R.T. : 4.087 min  
 Response: 0  
 Conc: N.D.



#10 AR-1221-3

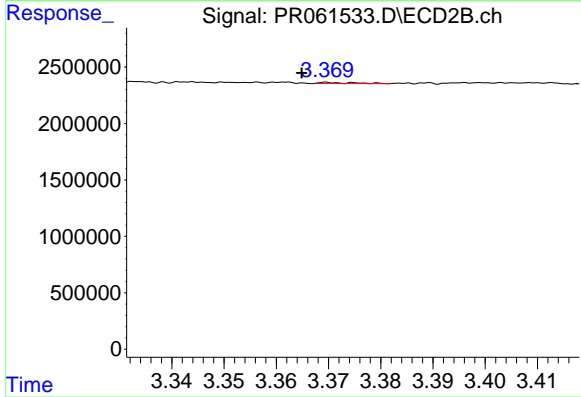
R.T.: 3.370 min  
 Delta R.T.: 0.005 min  
 Response: 45005  
 Conc: 0.50 ng/ml



#11 AR-1232-1

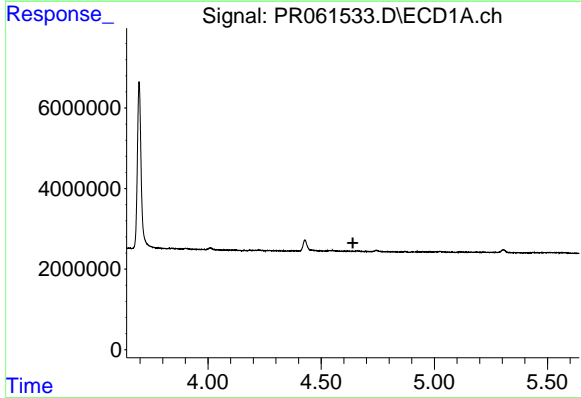
R.T.: 0.000 min  
 Exp R.T. : 4.087 min  
 Response: 0  
 Conc: N.D.

Instrument :  
 ECD\_R  
 ClientSampleId :



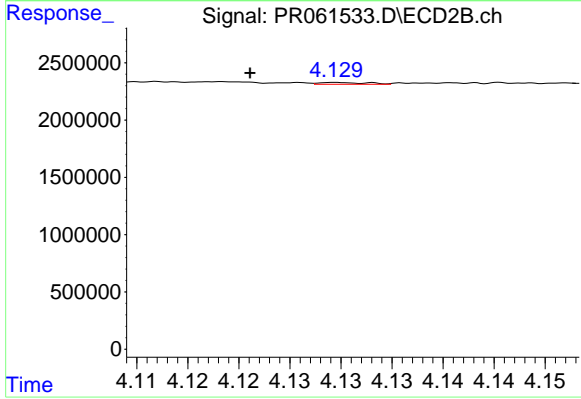
#11 AR-1232-1

R.T.: 3.370 min  
 Delta R.T.: 0.005 min  
 Response: 45005  
 Conc: 0.63 ng/ml



#12 AR-1232-2

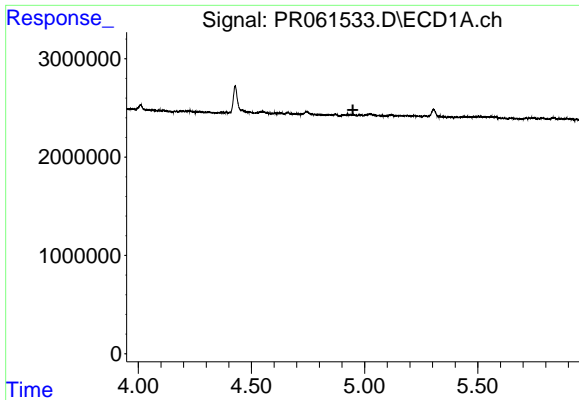
R.T.: 0.000 min  
 Exp R.T. : 4.640 min  
 Response: 0  
 Conc: N.D.



#12 AR-1232-2

R.T.: 4.129 min  
 Delta R.T.: 0.008 min  
 Response: 54118  
 Conc: 0.82 ng/ml

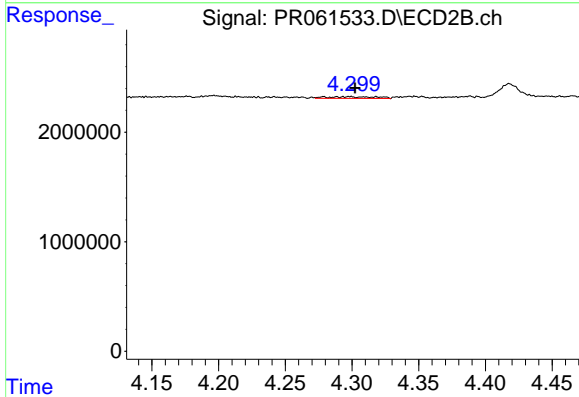




#13 AR-1232-3

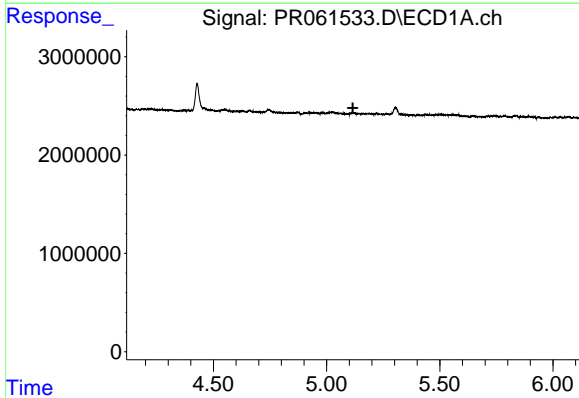
R.T.: 0.000 min  
 Exp R.T. : 4.948 min  
 Response: 0  
 Conc: N.D.

Instrument :  
 ECD\_R  
 ClientSampleId :



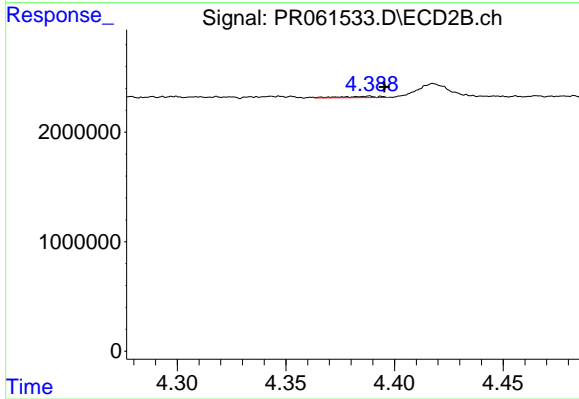
#13 AR-1232-3

R.T.: 4.279 min  
 Delta R.T.: -0.024 min  
 Response: 397684  
 Conc: 11.13 ng/ml



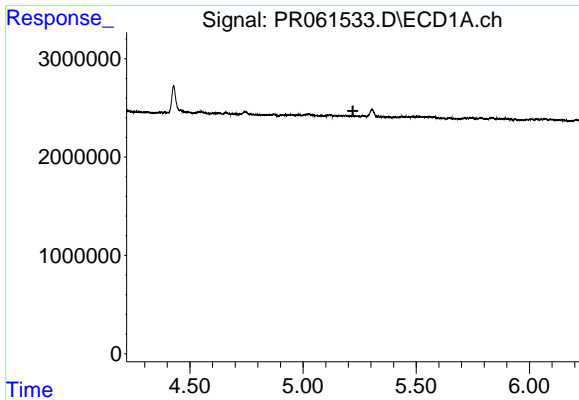
#14 AR-1232-4

R.T.: 0.000 min  
 Exp R.T. : 5.116 min  
 Response: 0  
 Conc: N.D.



#14 AR-1232-4

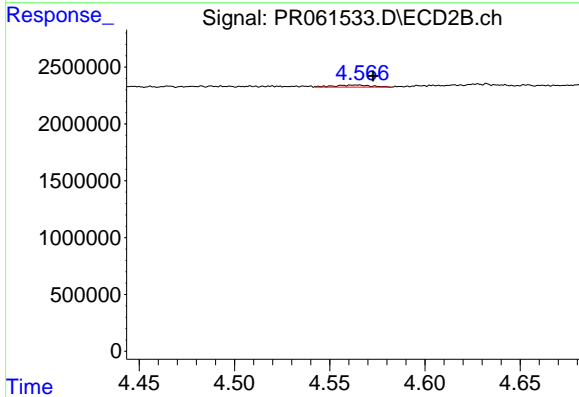
R.T.: 4.388 min  
 Delta R.T.: -0.007 min  
 Response: 153175  
 Conc: 5.05 ng/ml



#15 AR-1232-5

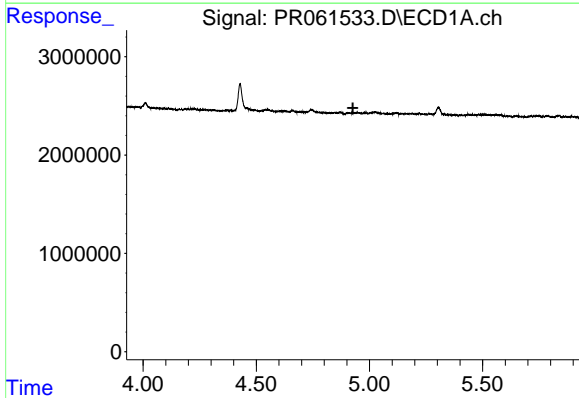
R.T.: 0.000 min  
 Exp R.T. : 5.220 min  
 Response: 0  
 Conc: N.D.

Instrument :  
 ECD\_R  
 ClientSampleId :



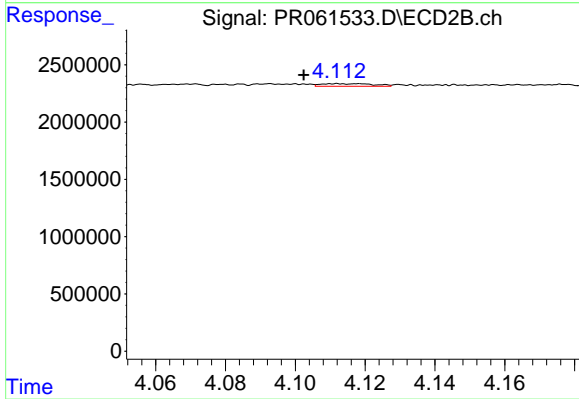
#15 AR-1232-5

R.T.: 4.564 min  
 Delta R.T.: -0.009 min  
 Response: 242249  
 Conc: 6.78 ng/ml



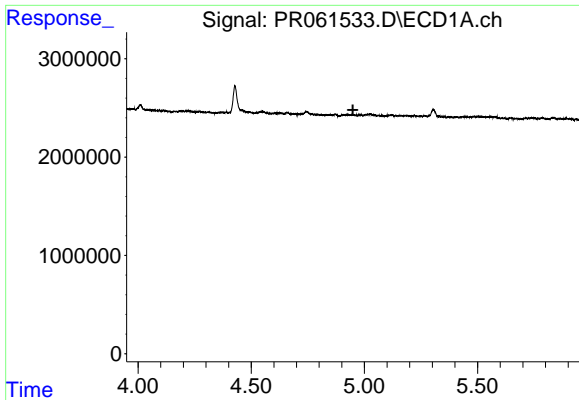
#16 AR-1242-1

R.T.: 0.000 min  
 Exp R.T. : 4.927 min  
 Response: 0  
 Conc: N.D.



#16 AR-1242-1

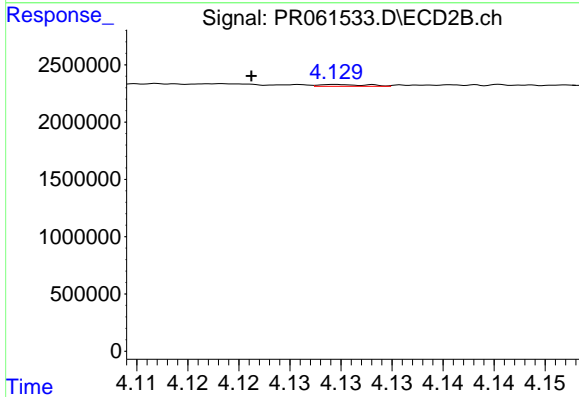
R.T.: 4.112 min  
 Delta R.T.: 0.010 min  
 Response: 241477  
 Conc: 2.73 ng/ml



#17 AR-1242-2

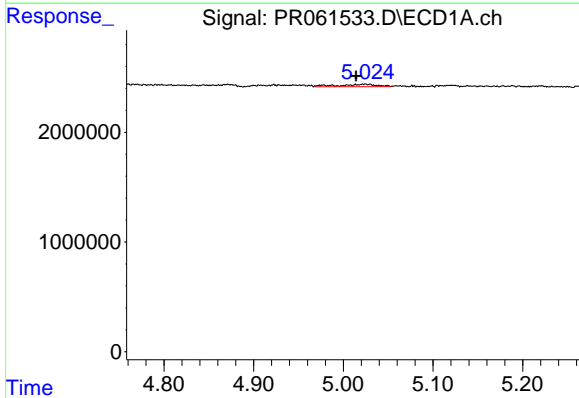
R.T.: 0.000 min  
 Exp R.T.: 4.949 min  
 Response: 0  
 Conc: N.D.

Instrument :  
 ECD\_R  
 ClientSampleId :



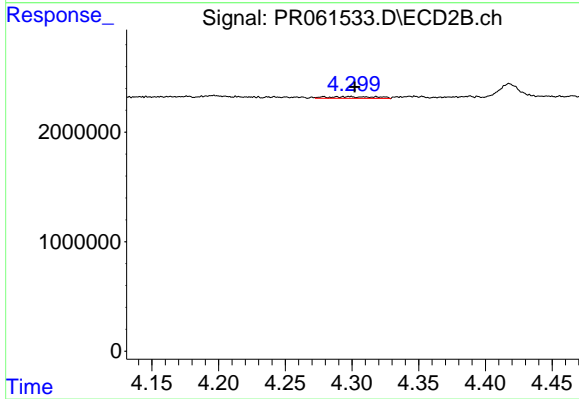
#17 AR-1242-2

R.T.: 4.129 min  
 Delta R.T.: 0.008 min  
 Response: 54118  
 Conc: 0.43 ng/ml



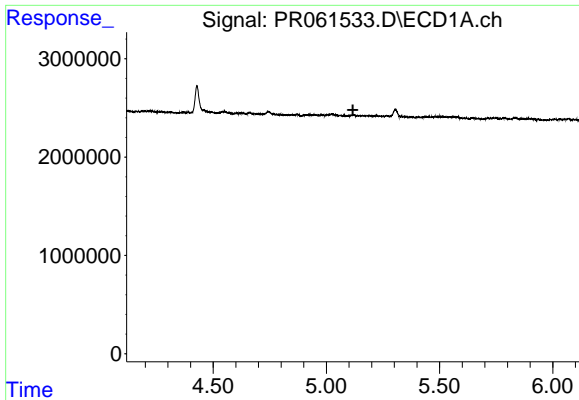
#18 AR-1242-3

R.T.: 5.024 min  
 Delta R.T.: 0.010 min  
 Response: 653943  
 Conc: 9.91 ng/ml



#18 AR-1242-3

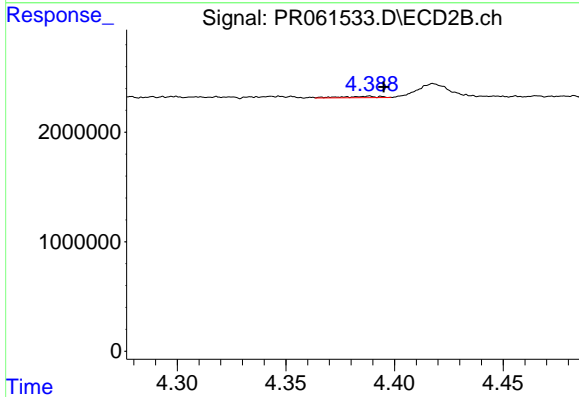
R.T.: 4.279 min  
 Delta R.T.: -0.024 min  
 Response: 397684  
 Conc: 5.79 ng/ml



#19 AR-1242-4

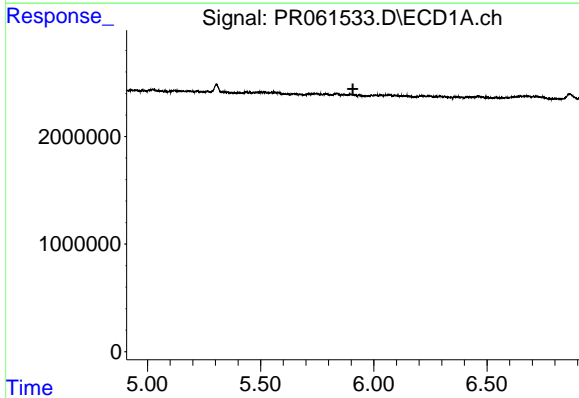
R.T.: 0.000 min  
 Exp R.T.: 5.117 min  
 Response: 0  
 Conc: N.D.

Instrument :  
 ECD\_R  
 ClientSampleId :



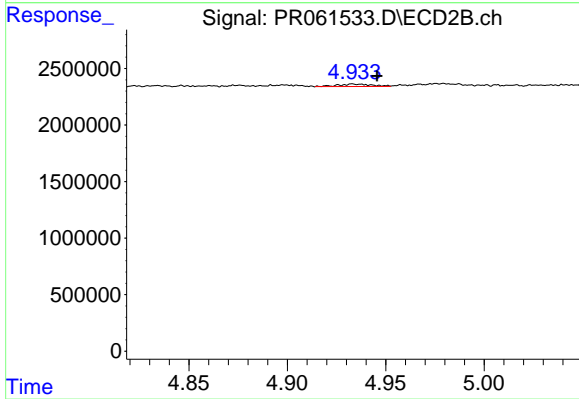
#19 AR-1242-4

R.T.: 4.388 min  
 Delta R.T.: -0.007 min  
 Response: 153175  
 Conc: 2.36 ng/ml



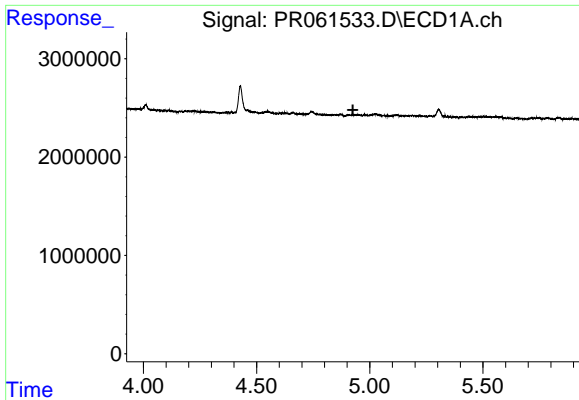
#20 AR-1242-5

R.T.: 0.000 min  
 Exp R.T.: 5.907 min  
 Response: 0  
 Conc: N.D.



#20 AR-1242-5

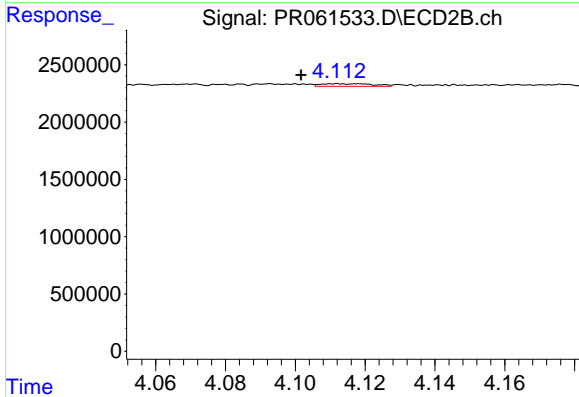
R.T.: 4.935 min  
 Delta R.T.: -0.011 min  
 Response: 251003  
 Conc: 2.97 ng/ml



#21 AR-1248-1

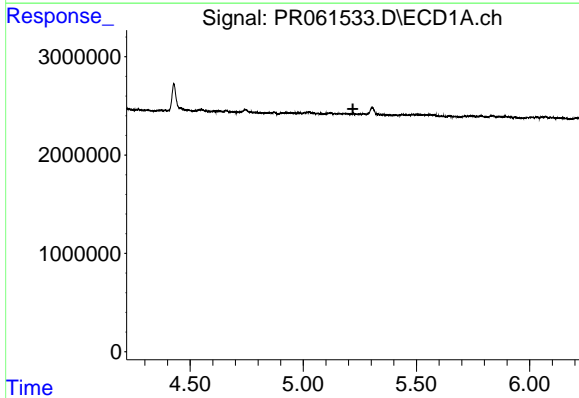
R.T.: 0.000 min  
 Exp R.T.: 4.926 min  
 Response: 0  
 Conc: N.D.

Instrument :  
 ECD\_R  
 ClientSampleId :



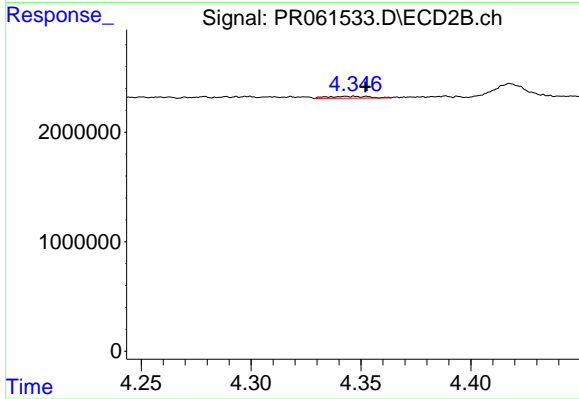
#21 AR-1248-1

R.T.: 4.112 min  
 Delta R.T.: 0.010 min  
 Response: 241477  
 Conc: 3.53 ng/ml



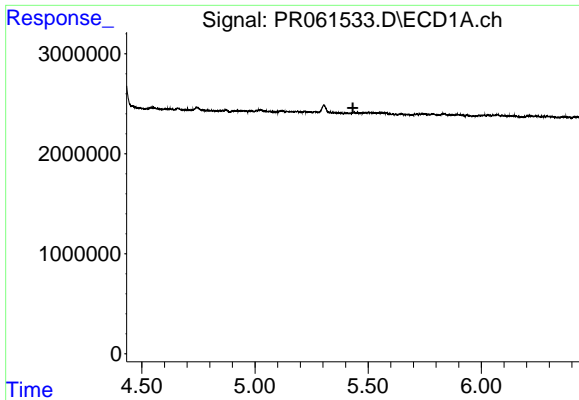
#22 AR-1248-2

R.T.: 0.000 min  
 Exp R.T.: 5.219 min  
 Response: 0  
 Conc: N.D.



#22 AR-1248-2

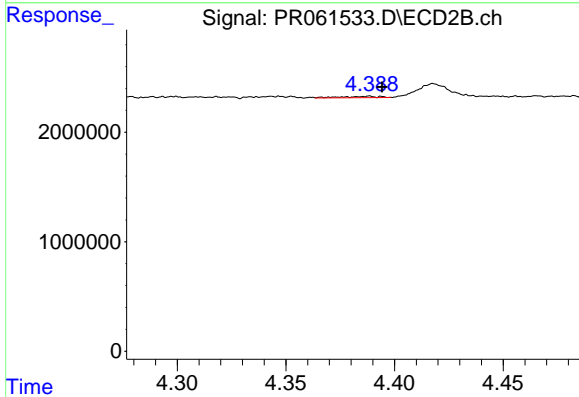
R.T.: 4.347 min  
 Delta R.T.: -0.005 min  
 Response: 224081  
 Conc: 2.32 ng/ml



#23 AR-1248-3

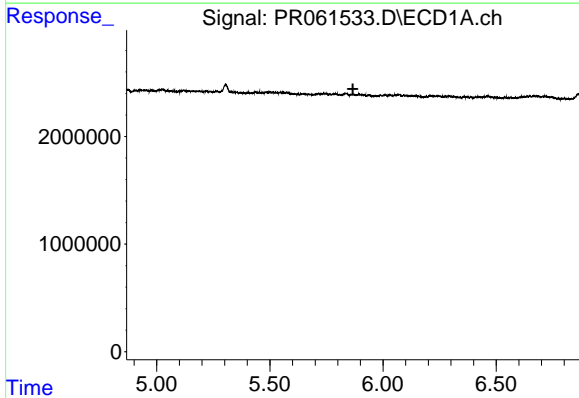
R.T.: 0.000 min  
 Exp R.T. : 5.432 min  
 Response: 0  
 Conc: N.D.

Instrument :  
 ECD\_R  
 ClientSampleId :



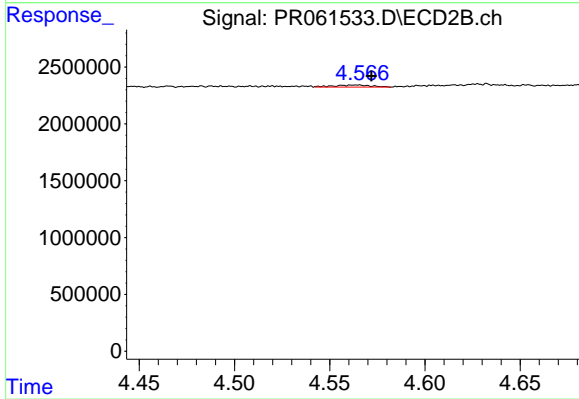
#23 AR-1248-3

R.T.: 4.388 min  
 Delta R.T.: -0.006 min  
 Response: 153175  
 Conc: 1.54 ng/ml



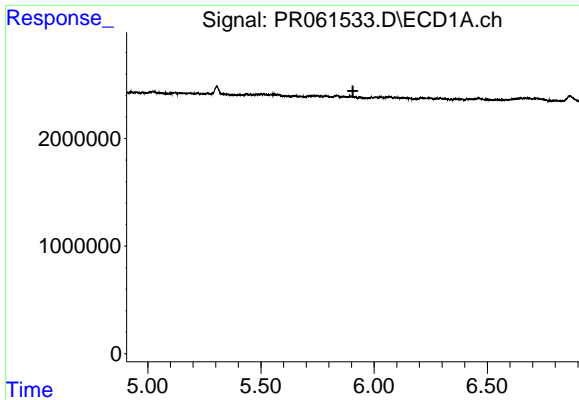
#24 AR-1248-4

R.T.: 0.000 min  
 Exp R.T. : 5.867 min  
 Response: 0  
 Conc: N.D.



#24 AR-1248-4

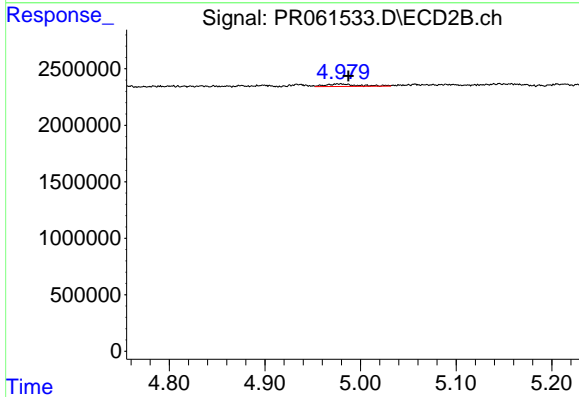
R.T.: 4.564 min  
 Delta R.T.: -0.008 min  
 Response: 242249  
 Conc: 2.00 ng/ml



#25 AR-1248-5

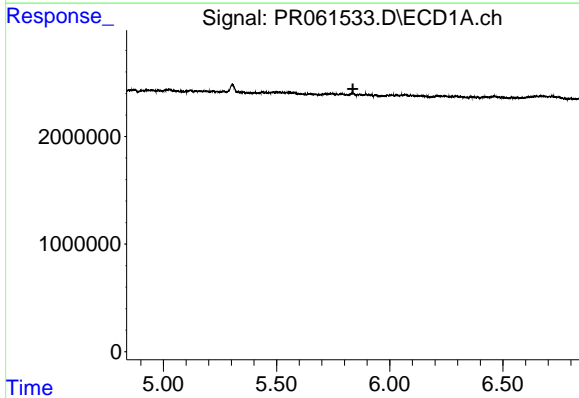
R.T.: 0.000 min  
 Exp R.T. : 5.906 min  
 Response: 0  
 Conc: N.D.

Instrument :  
 ECD\_R  
 ClientSampleId :



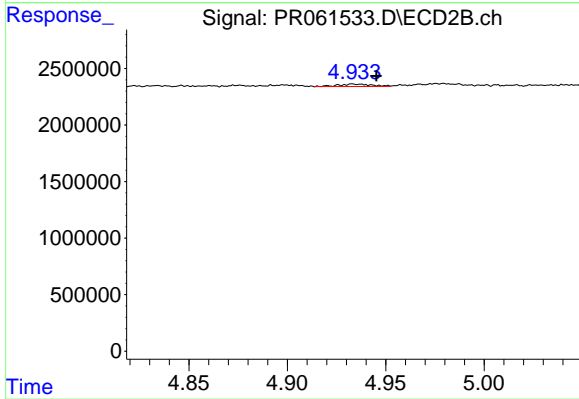
#25 AR-1248-5

R.T.: 4.978 min  
 Delta R.T.: -0.009 min  
 Response: 523507  
 Conc: 4.34 ng/ml



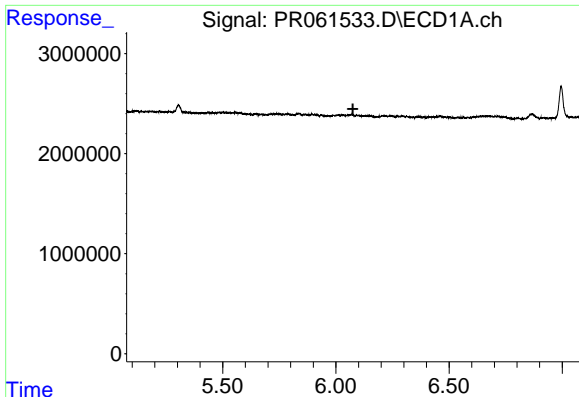
#26 AR-1254-1

R.T.: 0.000 min  
 Exp R.T. : 5.837 min  
 Response: 0  
 Conc: N.D.



#26 AR-1254-1

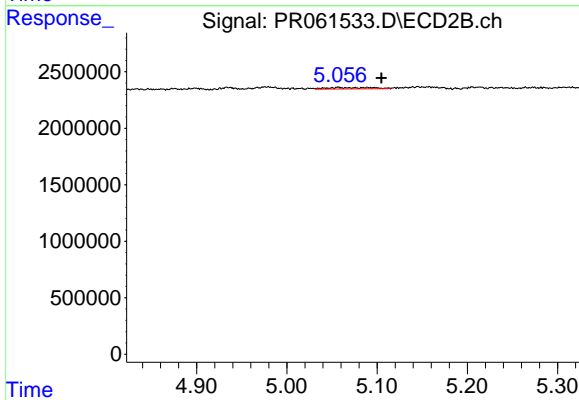
R.T.: 4.935 min  
 Delta R.T.: -0.011 min  
 Response: 251003  
 Conc: 1.36 ng/ml



#27 AR-1254-2

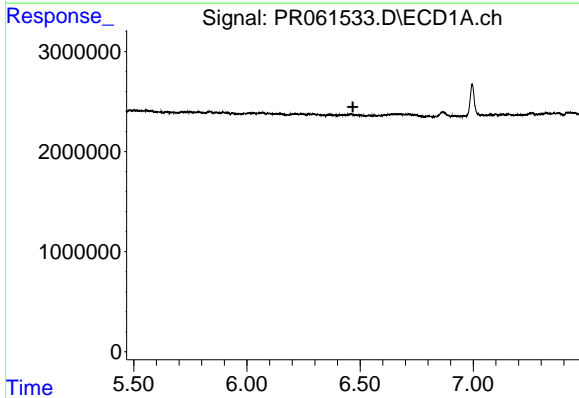
R.T.: 0.000 min  
 Exp R.T. : 6.075 min  
 Response: 0  
 Conc: N.D.

Instrument :  
 ECD\_R  
 ClientSampleId :



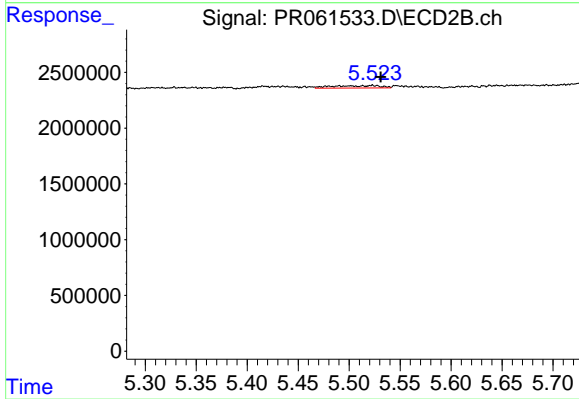
#27 AR-1254-2

R.T.: 5.057 min  
 Delta R.T.: -0.048 min  
 Response: 445125  
 Conc: 2.81 ng/ml



#28 AR-1254-3

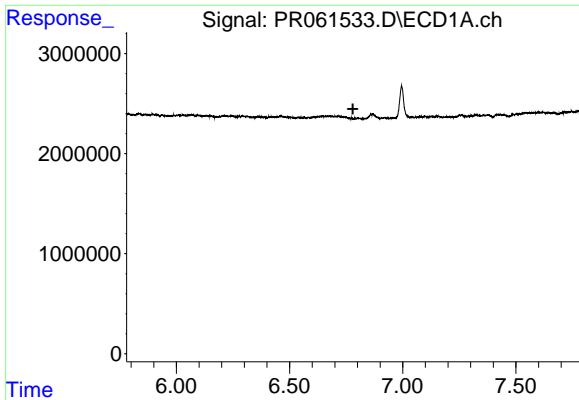
R.T.: 0.000 min  
 Exp R.T. : 6.468 min  
 Response: 0  
 Conc: N.D.



#28 AR-1254-3

R.T.: 5.523 min  
 Delta R.T.: -0.008 min  
 Response: 731901  
 Conc: 2.75 ng/ml

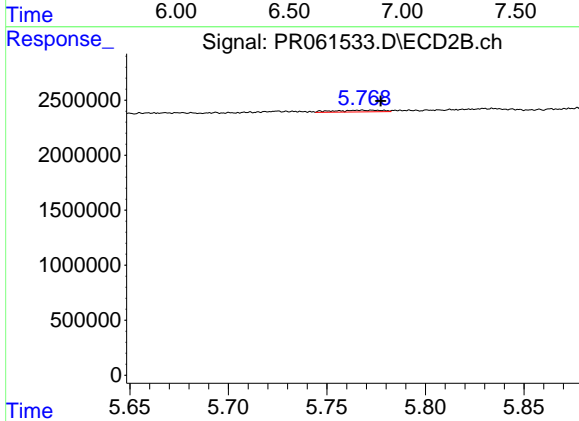




#29 AR-1254-4

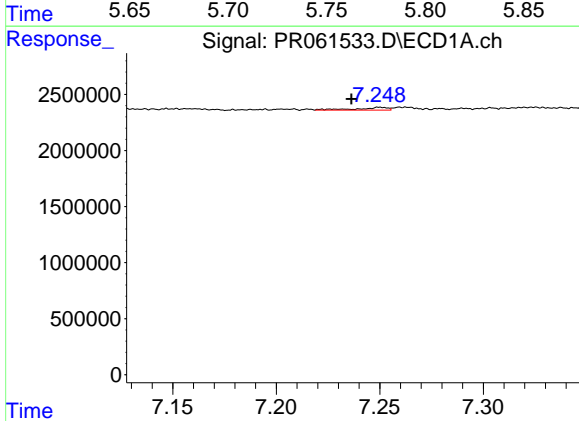
R.T.: 0.000 min  
 Exp R.T.: 6.780 min  
 Response: 0  
 Conc: N.D.

Instrument :  
 ECD\_R  
 ClientSampleId :



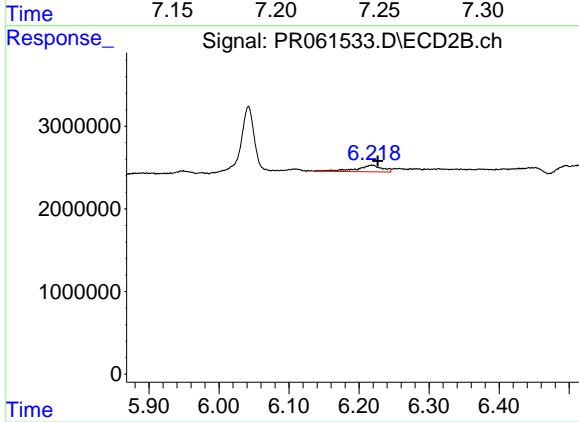
#29 AR-1254-4

R.T.: 5.769 min  
 Delta R.T.: -0.008 min  
 Response: 259963  
 Conc: 1.55 ng/ml



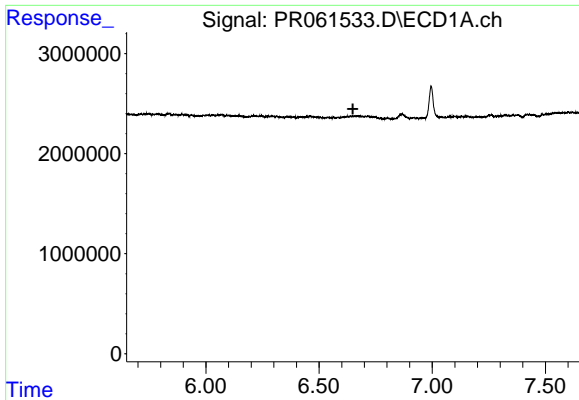
#30 AR-1254-5

R.T.: 7.250 min  
 Delta R.T.: 0.014 min  
 Response: 243294  
 Conc: 2.27 ng/ml



#30 AR-1254-5

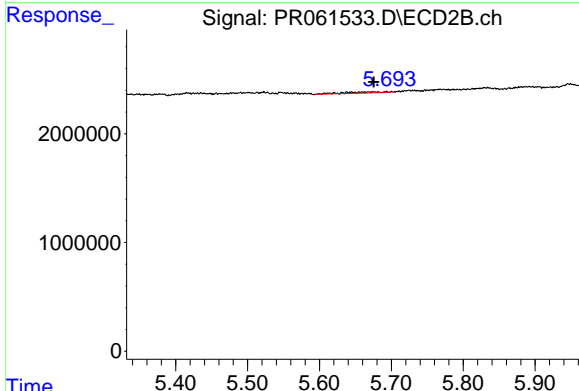
R.T.: 6.218 min  
 Delta R.T.: -0.008 min  
 Response: 2054816  
 Conc: 8.35 ng/ml



#31 AR-1260-1

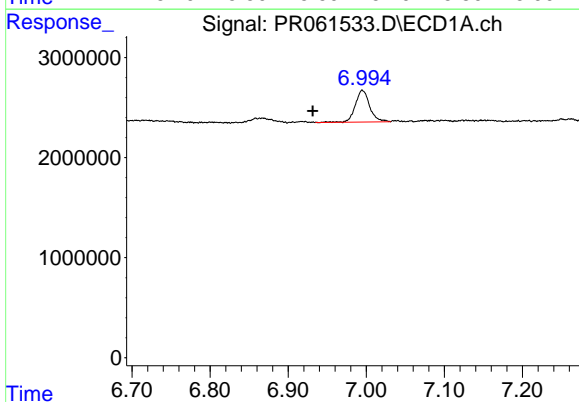
R.T.: 0.000 min  
 Exp R.T.: 6.650 min  
 Response: 0  
 Conc: N.D.

Instrument :  
 ECD\_R  
 ClientSampleId :



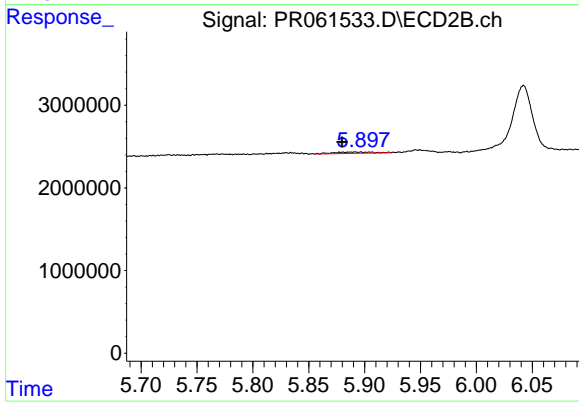
#31 AR-1260-1

R.T.: 5.677 min  
 Delta R.T.: 0.000 min  
 Response: 401277  
 Conc: 2.35 ng/ml



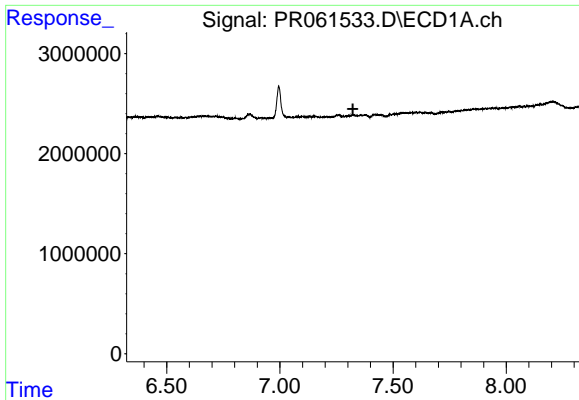
#32 AR-1260-2

R.T.: 6.995 min  
 Delta R.T.: 0.063 min  
 Response: 4064050  
 Conc: 34.53 ng/ml



#32 AR-1260-2

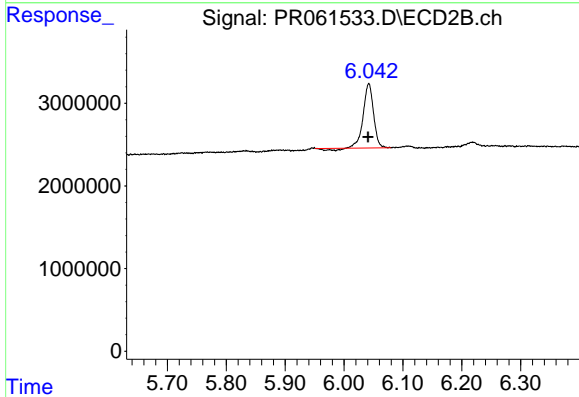
R.T.: 5.892 min  
 Delta R.T.: 0.012 min  
 Response: 375239  
 Conc: 1.79 ng/ml



#33 AR-1260-3

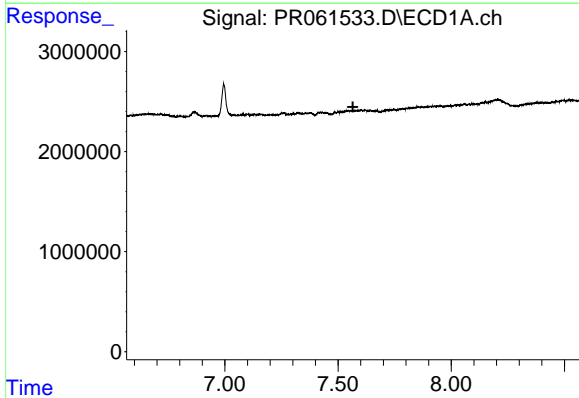
R.T.: 0.000 min  
 Exp R.T.: 7.322 min  
 Response: 0  
 Conc: N.D.

Instrument :  
 ECD\_R  
 ClientSampleId :



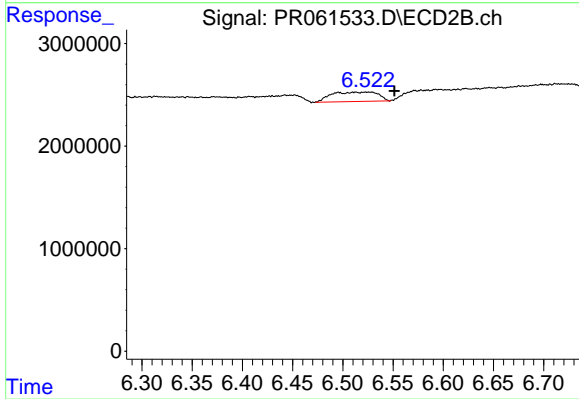
#33 AR-1260-3

R.T.: 6.042 min  
 Delta R.T.: 0.001 min  
 Response: 9239065  
 Conc: 44.49 ng/ml



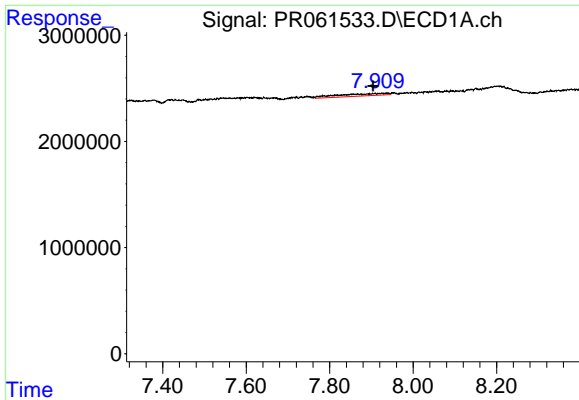
#34 AR-1260-4

R.T.: 0.000 min  
 Exp R.T.: 7.565 min  
 Response: 0  
 Conc: N.D.



#34 AR-1260-4

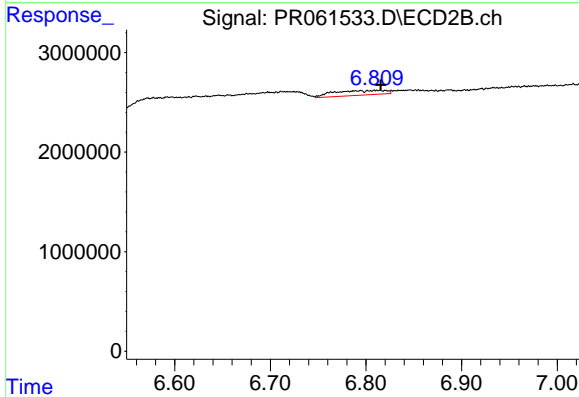
R.T.: 6.513 min  
 Delta R.T.: -0.038 min  
 Response: 2951396  
 Conc: 17.46 ng/ml



#35 AR-1260-5

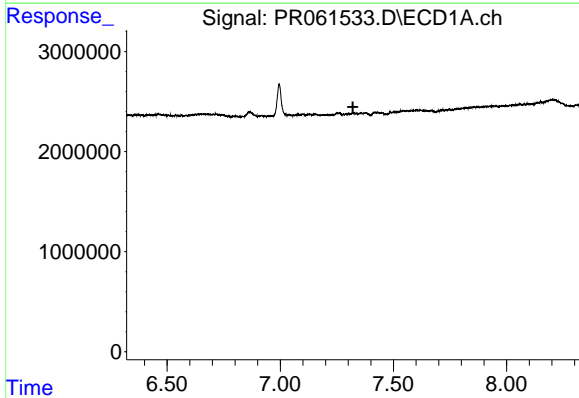
R.T.: 7.909 min  
 Delta R.T.: 0.005 min  
 Response: 1809692  
 Conc: 10.23 ng/ml

Instrument :  
 ECD\_R  
 ClientSampleId :



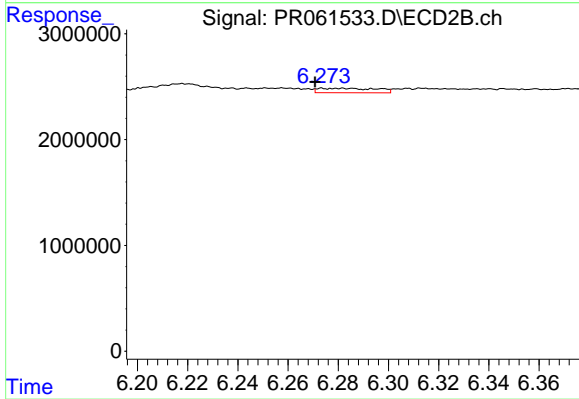
#35 AR-1260-5

R.T.: 6.812 min  
 Delta R.T.: -0.003 min  
 Response: 1742227  
 Conc: 4.30 ng/ml



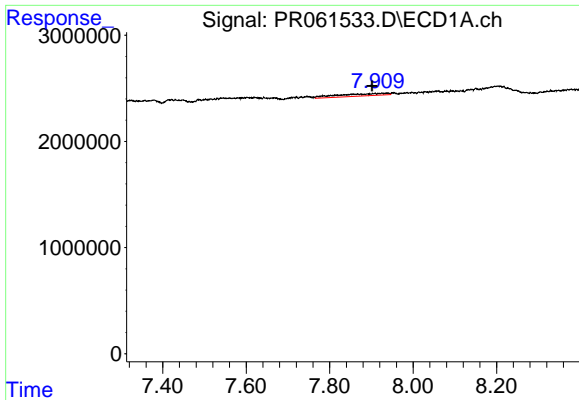
#36 AR-1262-1

R.T.: 0.000 min  
 Exp R.T. : 7.321 min  
 Response: 0  
 Conc: N.D.



#36 AR-1262-1

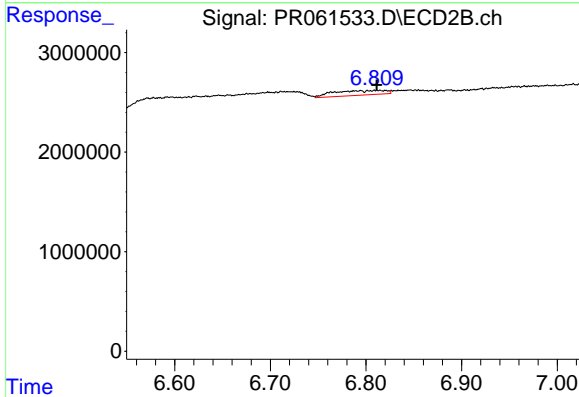
R.T.: 6.282 min  
 Delta R.T.: 0.011 min  
 Response: 680327  
 Conc: 2.57 ng/ml



#37 AR-1262-2

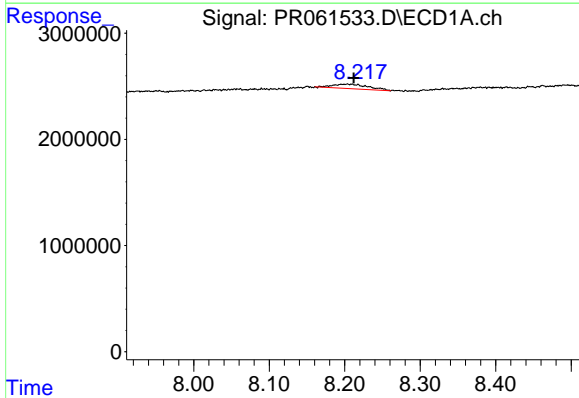
R.T.: 7.909 min  
 Delta R.T.: 0.008 min  
 Response: 1809692  
 Conc: 8.01 ng/ml

Instrument :  
 ECD\_R  
 ClientSampleId :



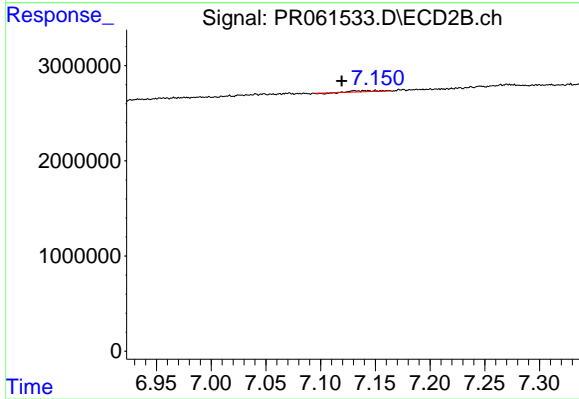
#37 AR-1262-2

R.T.: 6.812 min  
 Delta R.T.: 0.000 min  
 Response: 1742227  
 Conc: 3.52 ng/ml



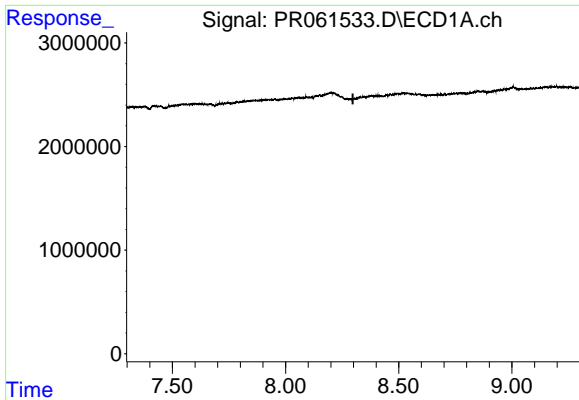
#38 AR-1262-3

R.T.: 8.204 min  
 Delta R.T.: -0.008 min  
 Response: 1393039  
 Conc: 9.06 ng/ml



#38 AR-1262-3

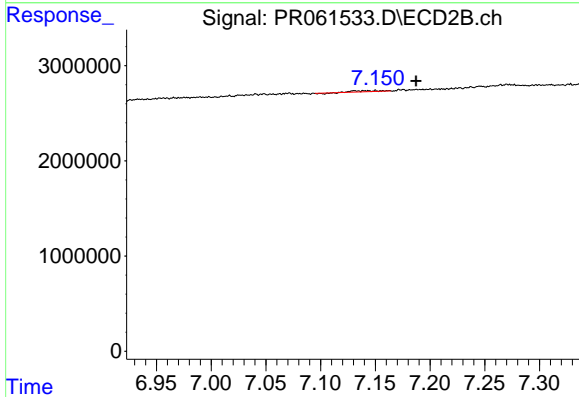
R.T.: 7.133 min  
 Delta R.T.: 0.014 min  
 Response: 154716  
 Conc: 0.89 ng/ml



#39 AR-1262-4

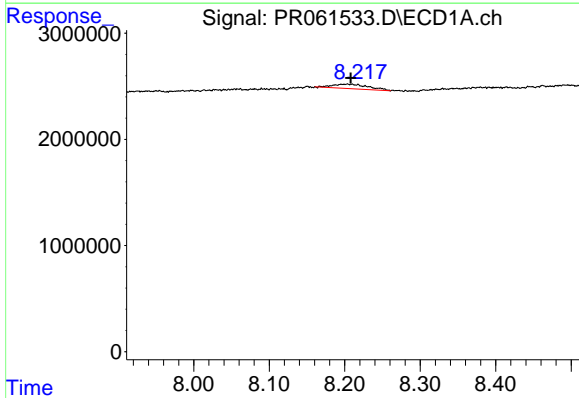
R.T.: 0.000 min  
 Exp R.T.: 8.298 min  
 Response: 0  
 Conc: N.D.

Instrument :  
 ECD\_R  
 ClientSampleId :



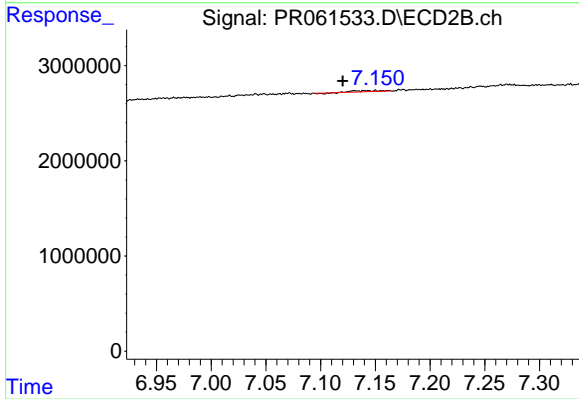
#39 AR-1262-4

R.T.: 7.133 min  
 Delta R.T.: -0.054 min  
 Response: 154716  
 Conc: 0.43 ng/ml



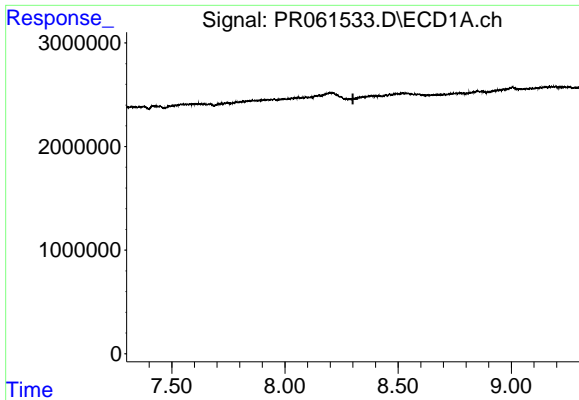
#41 AR-1268-1

R.T.: 8.204 min  
 Delta R.T.: -0.004 min  
 Response: 1393039  
 Conc: 6.90 ng/ml



#41 AR-1268-1

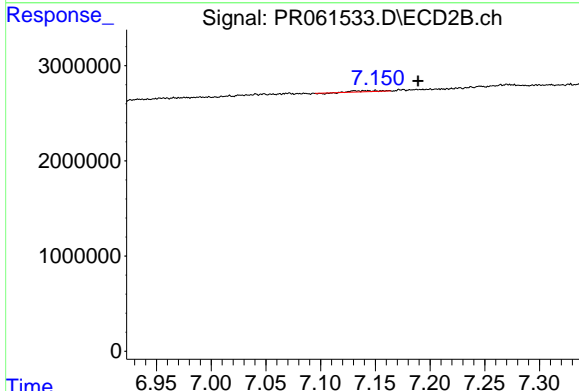
R.T.: 7.133 min  
 Delta R.T.: 0.013 min  
 Response: 154716  
 Conc: 0.37 ng/ml



#42 AR-1268-2

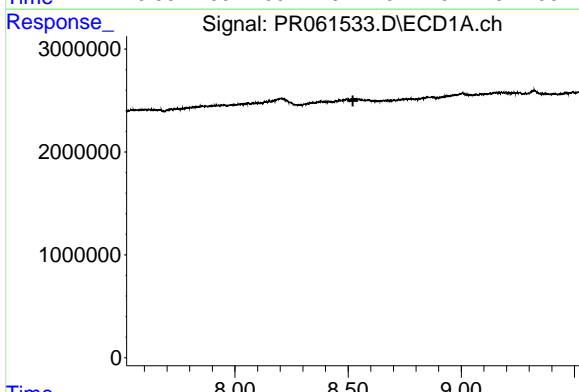
R.T.: 0.000 min  
 Exp R.T.: 8.300 min  
 Response: 0  
 Conc: N.D.

Instrument :  
 ECD\_R  
 ClientSampleId :



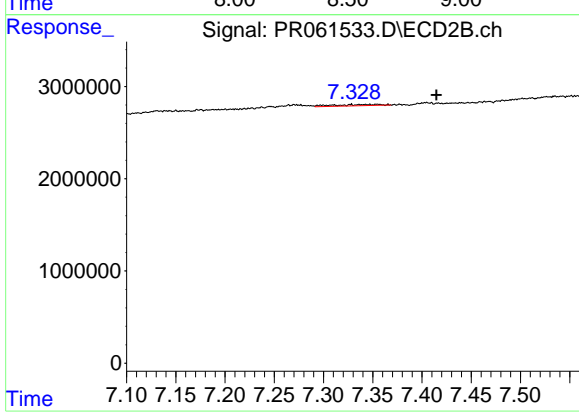
#42 AR-1268-2

R.T.: 7.133 min  
 Delta R.T.: -0.056 min  
 Response: 154716  
 Conc: 0.40 ng/ml



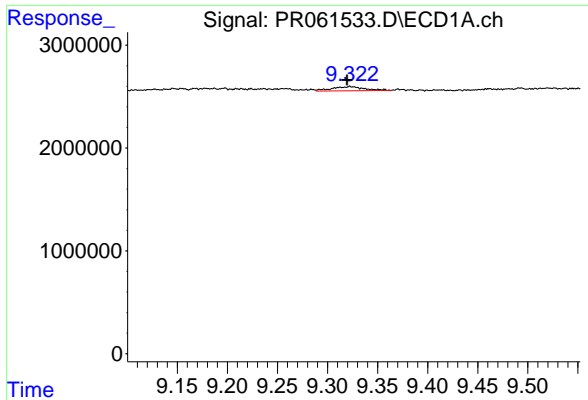
#43 AR-1268-3

R.T.: 0.000 min  
 Exp R.T.: 8.521 min  
 Response: 0  
 Conc: N.D.



#43 AR-1268-3

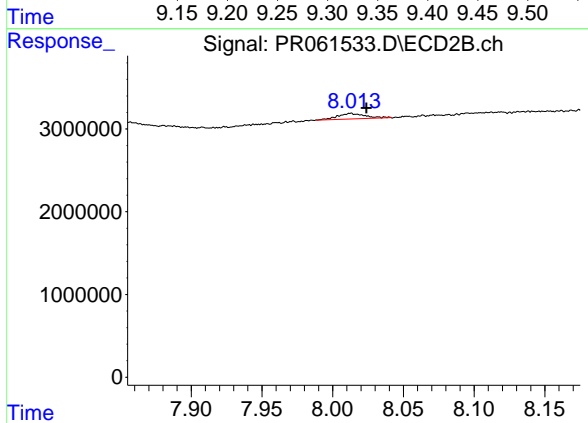
R.T.: 7.354 min  
 Delta R.T.: -0.060 min  
 Response: 466788  
 Conc: 1.40 ng/ml



#45 AR-1268-5

R.T.: 9.322 min  
 Delta R.T.: 0.003 min  
 Response: 907726  
 Conc: 1.95 ng/ml

Instrument : ECD\_R  
 ClientSampleId :



#45 AR-1268-5

R.T.: 8.013 min  
 Delta R.T.: -0.011 min  
 Response: 881530  
 Conc: 0.82 ng/ml