

Data Path : Z:\pestpcbsrv\HPCHEM1\ECD\_R\Data\PR052021\  
 Data File : PR050454.D  
 Signal(s) : Signal #1: ECD1A.ch Signal #2: ECD2B.ch  
 Acq On : 20 May 2021 19:44  
 Operator : DD\AJ  
 Sample : AR1242CCC400  
 Misc :  
 ALS Vial : 4 Sample Multiplier: 1

Instrument :  
 ECD\_R  
 ClientSampled :

Integration File signal 1: autoint1.e  
 Integration File signal 2: autoint2.e  
 Quant Time: May 21 07:13:08 2021  
 Quant Method : Z:\pestpcbsrv\HPCHEM1\ECD\_R\Method\PR050721CLP.M  
 Quant Title : GC EXTRACTABLES  
 QLast Update : Sat May 08 06:36:02 2021  
 Response via : Initial Calibration  
 Integrator: ChemStation

Volume Inj. : 1 µl  
 Signal #1 Phase : ZB MR1 Signal #2 Phase: ZB MR2  
 Signal #1 Info : 30Mx0.32mmx 0.5µm Signal #2 Info : 30M x 0.32mm x 0.25µm

Compound	RT#1	RT#2	Resp#1	Resp#2	ng/ml	ng/ml
System Monitoring Compounds						
1) SA Tetrachlo...	4.633	3.815	84095545	117.9E6	24.876	24.187
2) SA Decachlor...	10.499	8.838	218.9E6	247.8E6	40.078	37.448
Target Compounds						
3) L1 AR-1016-1	5.814	4.901	81838228	83813116	446.553	413.451
4) L1 AR-1016-2	5.837	4.920	116.7E6	120.1E6	447.592	413.225
5) L1 AR-1016-3	5.898	5.096	70697901	63466083	445.553	409.412
6) L1 AR-1016-4	6.000	5.137	59924740	45825820	448.415	384.866
7) L1 AR-1016-5	6.292	5.350	60227210	67571250	434.469	413.118
8) L2 AR-1221-1	4.841	4.025	5798990	7573583	129.565	128.889
9) L2 AR-1221-2	4.934	4.113	7947599	9972080	243.162	237.263
10) L2 AR-1221-3	5.011	4.189	34110642	41581197	308.529	288.630
11) L3 AR-1232-1	5.011	4.189	34110642	41581197	365.819	345.013
12) L3 AR-1232-2	5.545	4.920	54254708	120.1E6	967.583	918.380
13) L3 AR-1232-3	5.837	5.096	116.7E6	63466083	968.796	915.854
14) L3 AR-1232-4	6.000	5.179	59924740	59766186	977.423	984.558
15) L3 AR-1232-5	6.085	5.350	50371810	67571250	1052.624	987.504
16) L4 AR-1242-1	5.814	4.901	81838228	83813116	469.448	451.152
17) L4 AR-1242-2	5.837	4.920	116.7E6	120.1E6	472.570	446.467
18) L4 AR-1242-3	5.898	5.096	70697901	63466083	465.617	438.338
19) L4 AR-1242-4	6.000	5.179	59924740	59766186	465.915	430.438
20) L4 AR-1242-5	6.736	5.700	66241064	82316811	413.583	415.990
21) L5 AR-1248-1	5.814	4.901	81838228	83813116	672.086	643.254
22) L5 AR-1248-2	6.085	5.137	50371810	45825820	275.119	255.356
23) L5 AR-1248-3	6.292	5.179	60227210	59766186	284.253	311.550
24) L5 AR-1248-4	6.697	5.350	64108323	67571250	242.507	284.586
25) L5 AR-1248-5	6.736	5.741	66241064	70893562	259.354	270.306
26) L6 AR-1254-1	6.669	5.700	48635839	82316811	131.174	148.615
27) L6 AR-1254-2	6.896	5.847	56897731	20214911	95.842	41.440 #
28) L6 AR-1254-3	7.258	6.249	22354891	26740602	33.421	30.605
29) L6 AR-1254-4	7.543	6.476	17682327	21346291	34.875	38.215
30) L6 AR-1254-5	7.963	6.893	4609456	7043243	8.436	8.688
31) L7 AR-1260-1	7.418	6.394	2191968	10168564	8.310	30.565 #
32) L7 AR-1260-2	7.671	6.566	4477228	3660305	13.886	8.843 #
33) L7 AR-1260-3	7.991f	6.718	517165	2866373	2.101	7.250 #
34) L7 AR-1260-4	8.261	7.226	1861426	1938717	6.356	5.611
35) L7 AR-1260-5	0.000	7.406	0	1720497	N.D.	1.985 #
36) L8 AR-1262-1	7.991f	6.893	517165	7043243	1.047	21.420 #
37) L8 AR-1262-2	8.536f	7.406	809415	1720497	0.885	1.408 #
38) L8 AR-1262-3	0.000	7.773f	0	2049340	N.D.	4.562 #
39) L8 AR-1262-4	0.000	7.773	0	2049340	N.D.	2.295 #
40) L8 AR-1262-5	9.752	0.000	1739742	0	5.386	N.D. #
41) L9 AR-1268-1	0.000	7.773f	0	2049340	N.D.	1.422 #

Data Path : Z:\pestpcbsrv\HPCHEM1\ECD\_R\Data\PR052021\  
 Data File : PR050454.D  
 Signal(s) : Signal #1: ECD1A.ch Signal #2: ECD2B.ch  
 Acq On : 20 May 2021 19:44  
 Operator : DD\AJ  
 Sample : AR1242CCC400  
 Misc :  
 ALS Vial : 4 Sample Multiplier: 1

Instrument :  
 ECD\_R  
 ClientSampleId :

Integration File signal 1: autoint1.e  
 Integration File signal 2: autoint2.e  
 Quant Time: May 21 07:13:08 2021  
 Quant Method : Z:\pestpcbsrv\HPCHEM1\ECD\_R\Method\PR050721CLP.M  
 Quant Title : GC EXTRACTABLES  
 QLast Update : Sat May 08 06:36:02 2021  
 Response via : Initial Calibration  
 Integrator: ChemStation

Volume Inj. : 1 µl  
 Signal #1 Phase : ZB MR1 Signal #2 Phase: ZB MR2  
 Signal #1 Info : 30Mx0.32mmx 0.5µm Signal #2 Info : 30M x 0.32mm x 0.25µm

	Compound	RT#1	RT#2	Resp#1	Resp#2	ng/ml	ng/ml
42)	L9 AR-1268-2	0.000	7.773	0	2049340	N.D.	1.531 #
44)	L9 AR-1268-4	9.752	0.000	1739742	0	4.580	N.D. #
45)	L9 AR-1268-5	10.149	8.574	1452985	1589475	0.491	0.437

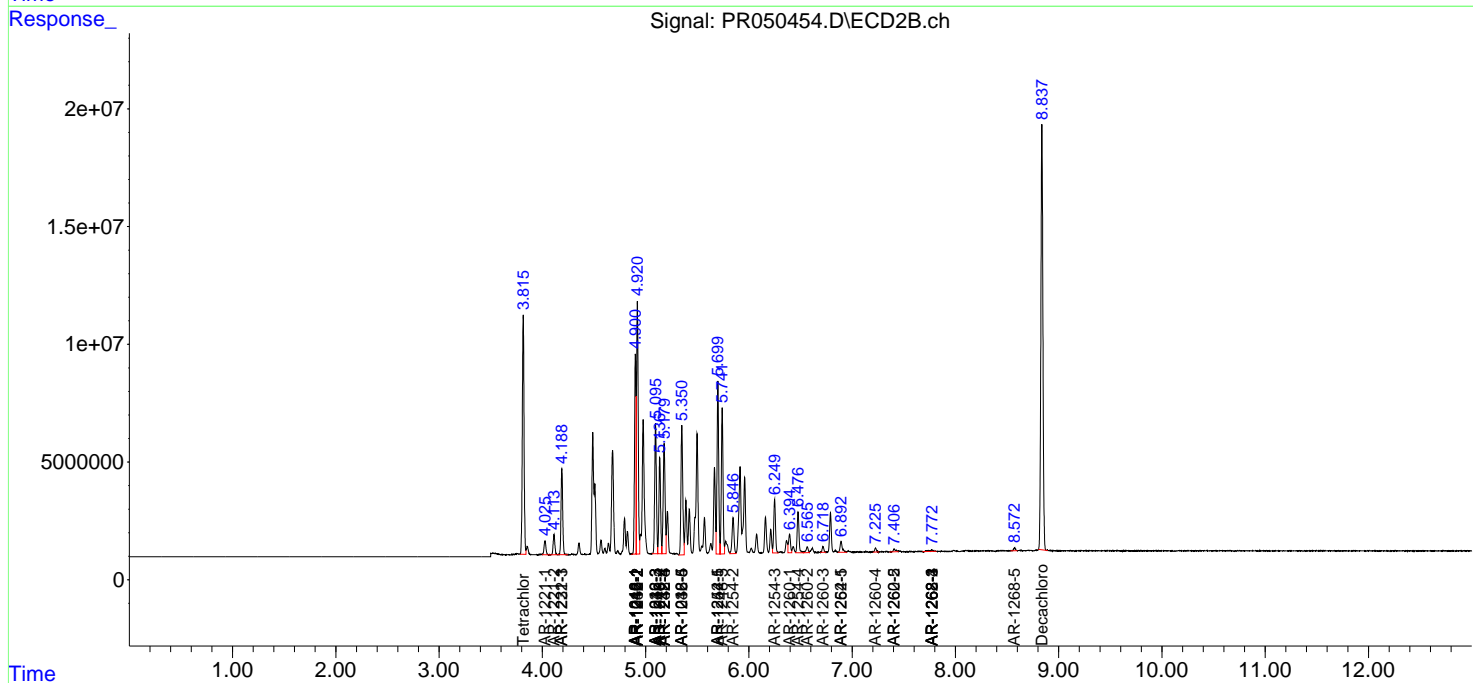
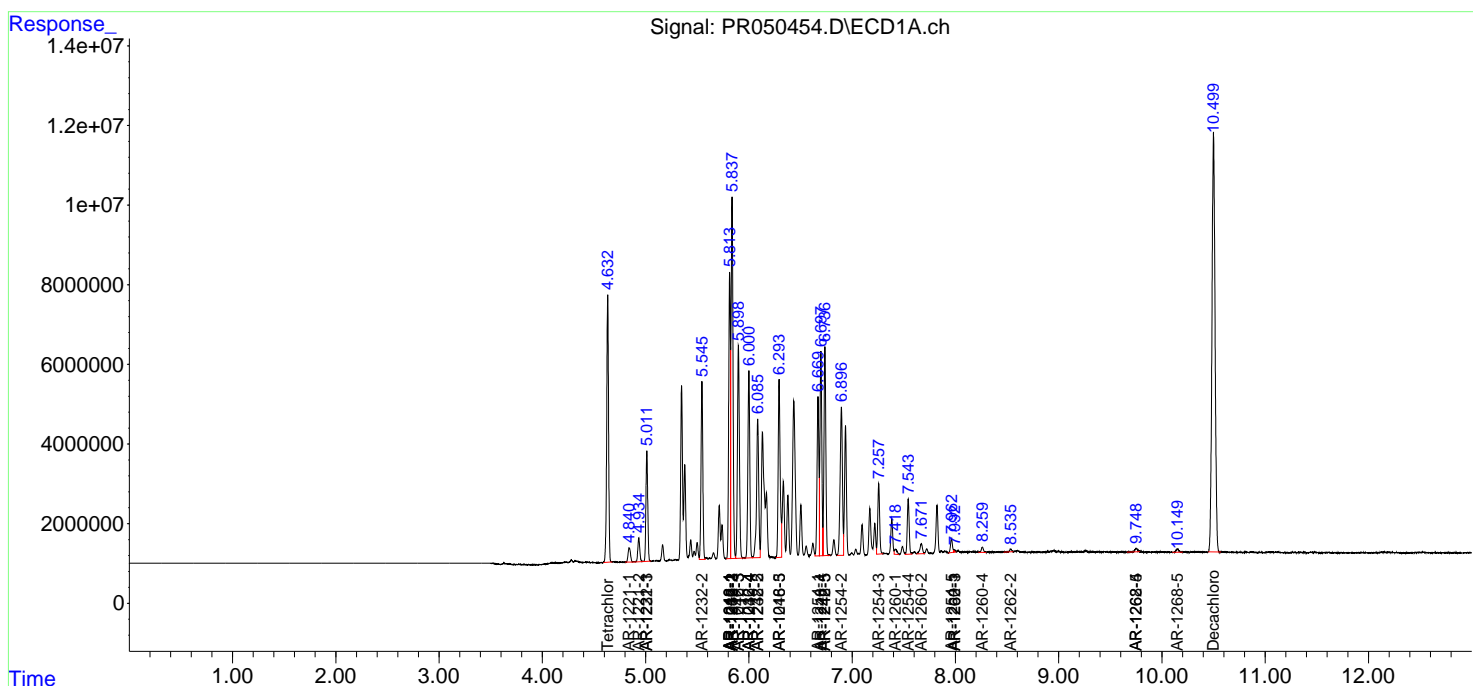
(f)=RT Delta > 1/2 Window (#)=Amounts differ by > 25% (m)=manual int.

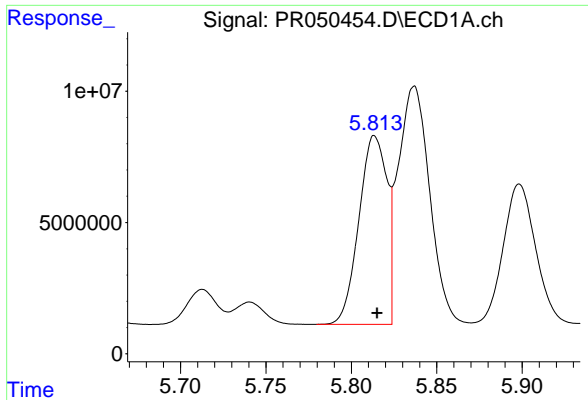
Data Path : Z:\pestpcbsrv\HPCHEM1\ECD\_R\Data\PR052021\  
 Data File : PR050454.D  
 Signal(s) : Signal #1: ECD1A.ch Signal #2: ECD2B.ch  
 Acq On : 20 May 2021 19:44  
 Operator : DD\AJ  
 Sample : AR1242CCC400  
 Misc :  
 ALS Vial : 4 Sample Multiplier: 1

Instrument :  
 ECD\_R  
 ClientSampled :

Integration File signal 1: autoint1.e  
 Integration File signal 2: autoint2.e  
 Quant Time: May 21 07:13:08 2021  
 Quant Method : Z:\pestpcbsrv\HPCHEM1\ECD\_R\Method\PR050721CLP.M  
 Quant Title : GC EXTRACTABLES  
 QLast Update : Sat May 08 06:36:02 2021  
 Response via : Initial Calibration  
 Integrator: ChemStation

Volume Inj. : 1 µl  
 Signal #1 Phase : ZB MR1 Signal #2 Phase: ZB MR2  
 Signal #1 Info : 30Mx0.32mmx 0.5µm Signal #2 Info : 30M x 0.32mm x 0.25µm

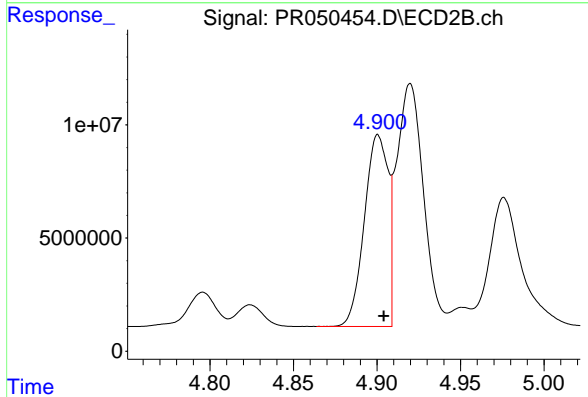




#3 AR-1016-1

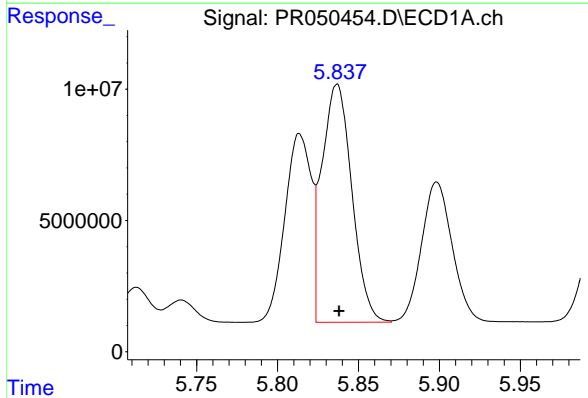
R.T.: 5.814 min  
 Delta R.T.: -0.002 min  
 Response: 81838228  
 Conc: 446.55 ng/ml

Instrument :  
 ECD\_R  
 ClientSampleId :



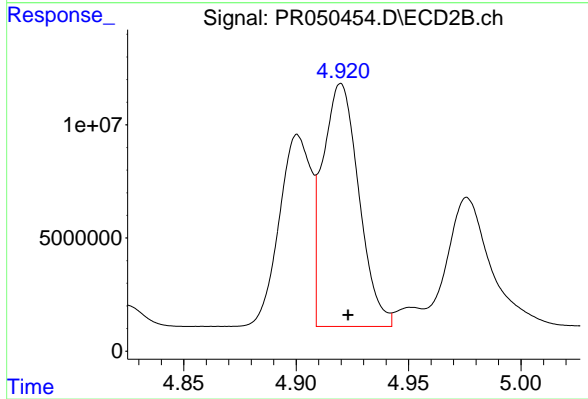
#3 AR-1016-1

R.T.: 4.901 min  
 Delta R.T.: -0.003 min  
 Response: 83813116  
 Conc: 413.45 ng/ml



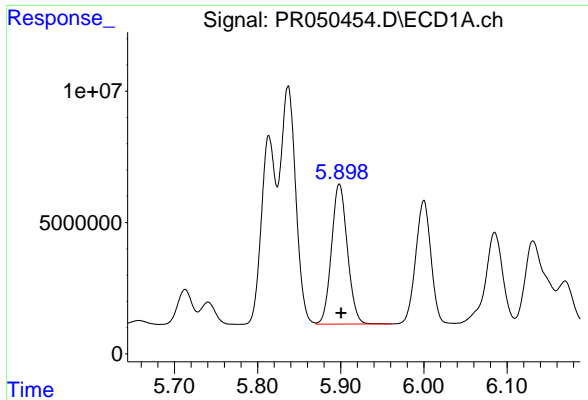
#4 AR-1016-2

R.T.: 5.837 min  
 Delta R.T.: -0.001 min  
 Response: 116675039  
 Conc: 447.59 ng/ml



#4 AR-1016-2

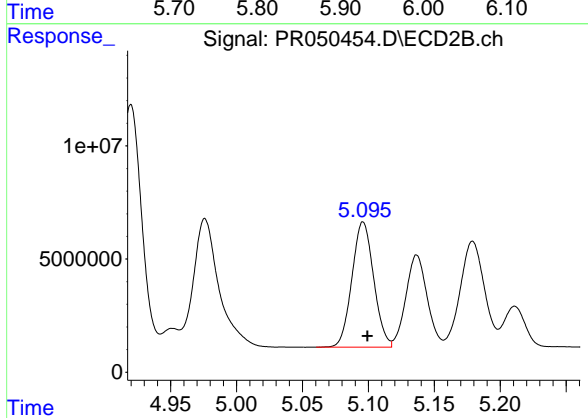
R.T.: 4.920 min  
 Delta R.T.: -0.003 min  
 Response: 120087715  
 Conc: 413.22 ng/ml



#5 AR-1016-3

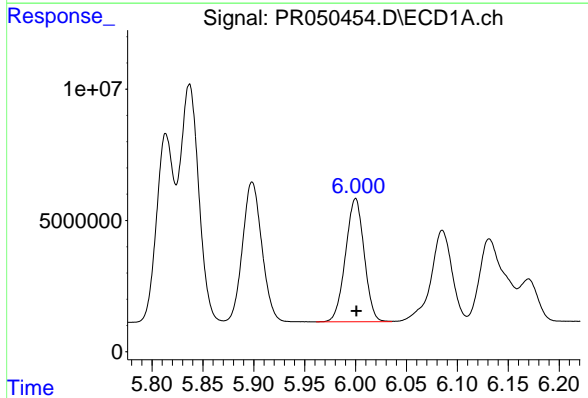
R.T.: 5.898 min  
Delta R.T.: -0.002 min  
Response: 70697901  
Conc: 445.55 ng/ml

Instrument :  
ECD\_R  
ClientSampleId :



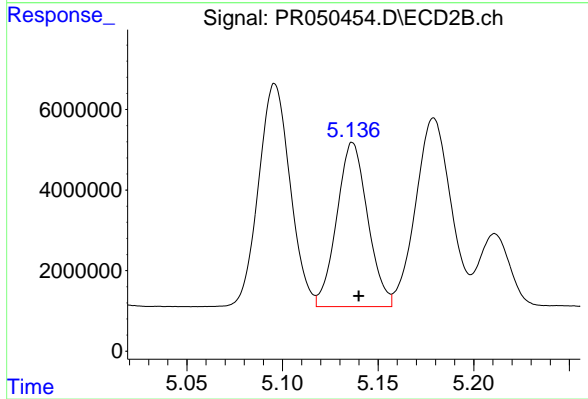
#5 AR-1016-3

R.T.: 5.096 min  
Delta R.T.: -0.003 min  
Response: 63466083  
Conc: 409.41 ng/ml



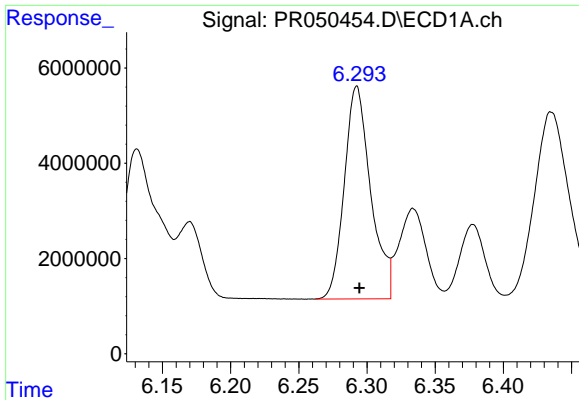
#6 AR-1016-4

R.T.: 6.000 min  
Delta R.T.: 0.000 min  
Response: 59924740  
Conc: 448.42 ng/ml



#6 AR-1016-4

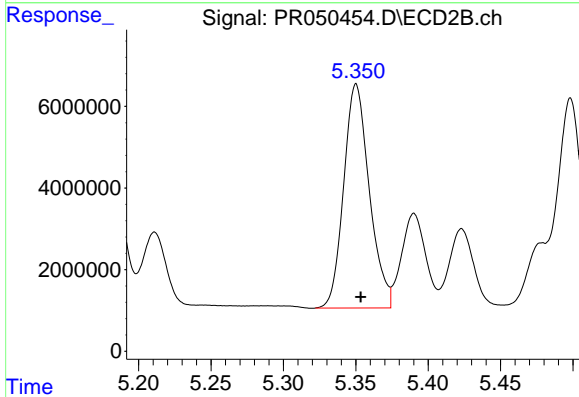
R.T.: 5.137 min  
Delta R.T.: -0.003 min  
Response: 45825820  
Conc: 384.87 ng/ml



#7 AR-1016-5

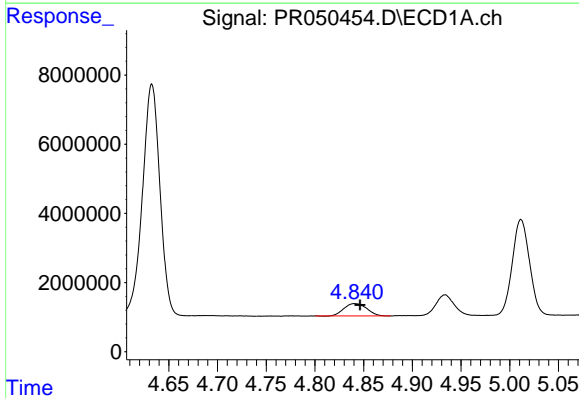
R.T.: 6.292 min  
 Delta R.T.: -0.002 min  
 Response: 60227210  
 Conc: 434.47 ng/ml

Instrument :  
 ECD\_R  
 ClientSampleId :



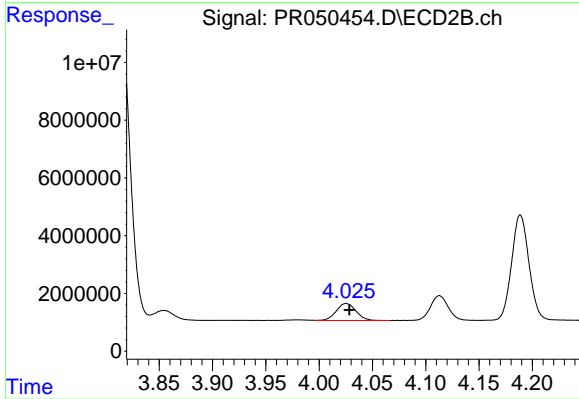
#7 AR-1016-5

R.T.: 5.350 min  
 Delta R.T.: -0.003 min  
 Response: 67571250  
 Conc: 413.12 ng/ml



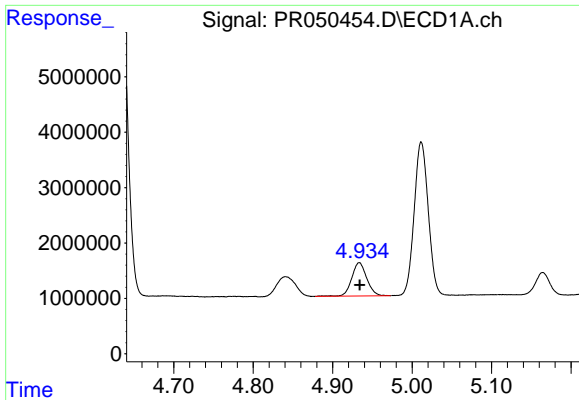
#8 AR-1221-1

R.T.: 4.841 min  
 Delta R.T.: -0.006 min  
 Response: 5798990  
 Conc: 129.57 ng/ml



#8 AR-1221-1

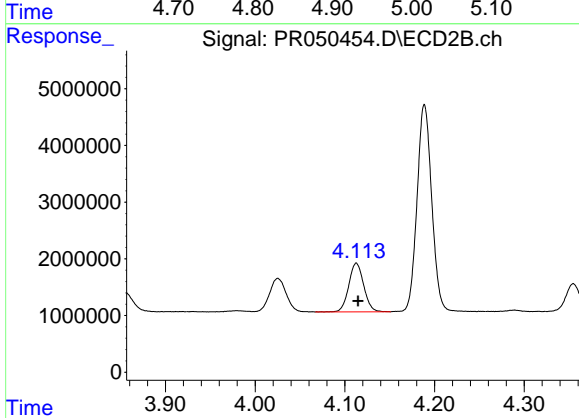
R.T.: 4.025 min  
 Delta R.T.: -0.003 min  
 Response: 7573583  
 Conc: 128.89 ng/ml



#9 AR-1221-2

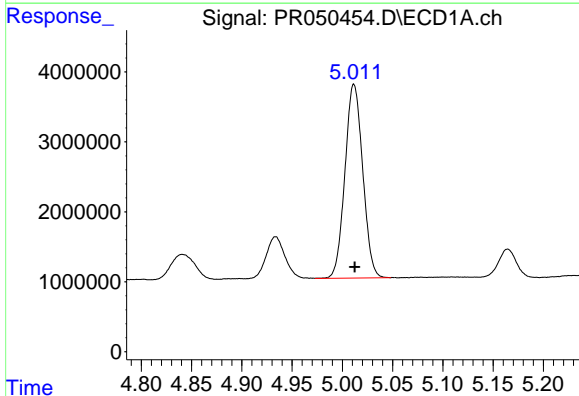
R.T.: 4.934 min  
 Delta R.T.: 0.000 min  
 Response: 7947599  
 Conc: 243.16 ng/ml

Instrument :  
 ECD\_R  
 ClientSampleId :



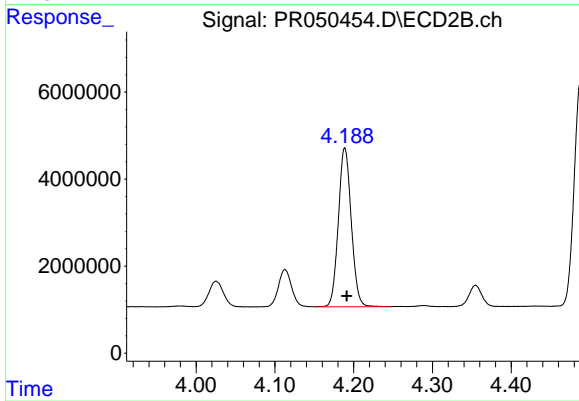
#9 AR-1221-2

R.T.: 4.113 min  
 Delta R.T.: -0.002 min  
 Response: 9972080  
 Conc: 237.26 ng/ml



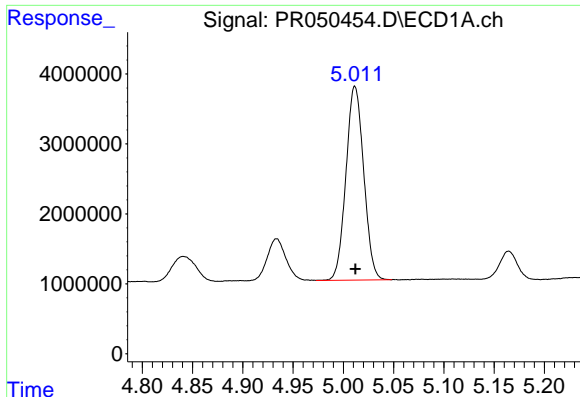
#10 AR-1221-3

R.T.: 5.011 min  
 Delta R.T.: 0.000 min  
 Response: 34110642  
 Conc: 308.53 ng/ml



#10 AR-1221-3

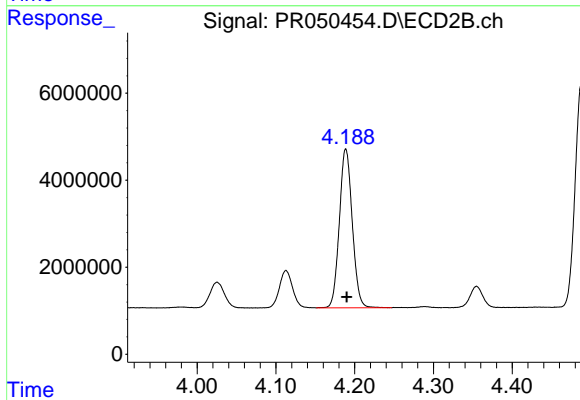
R.T.: 4.189 min  
 Delta R.T.: -0.003 min  
 Response: 41581197  
 Conc: 288.63 ng/ml



#11 AR-1232-1

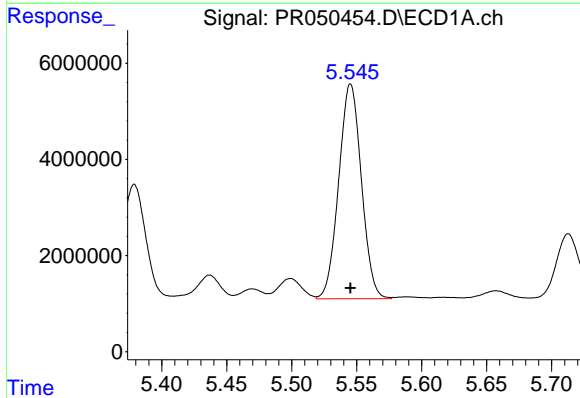
R.T.: 5.011 min  
 Delta R.T.: 0.000 min  
 Response: 34110642  
 Conc: 365.82 ng/ml

Instrument :  
 ECD\_R  
 ClientSampled :



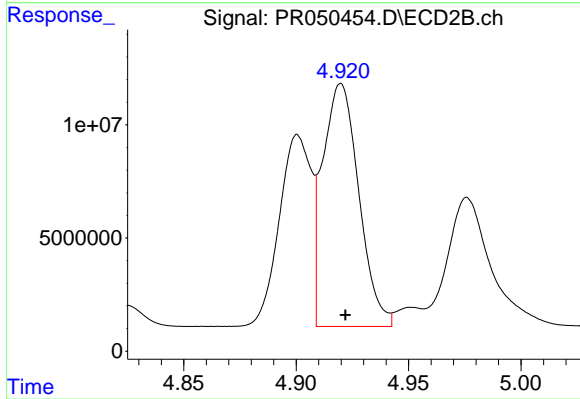
#11 AR-1232-1

R.T.: 4.189 min  
 Delta R.T.: -0.001 min  
 Response: 41581197  
 Conc: 345.01 ng/ml



#12 AR-1232-2

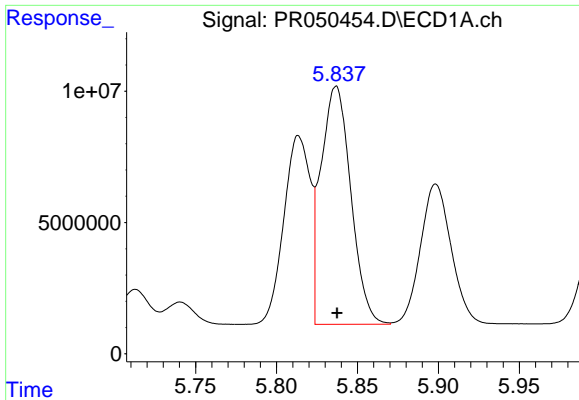
R.T.: 5.545 min  
 Delta R.T.: 0.000 min  
 Response: 54254708  
 Conc: 967.58 ng/ml



#12 AR-1232-2

R.T.: 4.920 min  
 Delta R.T.: -0.002 min  
 Response: 120087715  
 Conc: 918.38 ng/ml

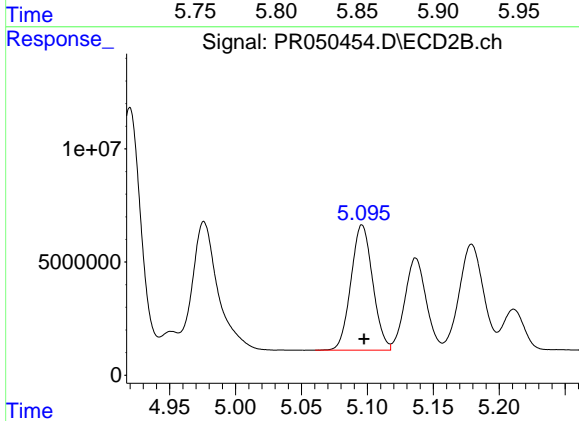




#13 AR-1232-3

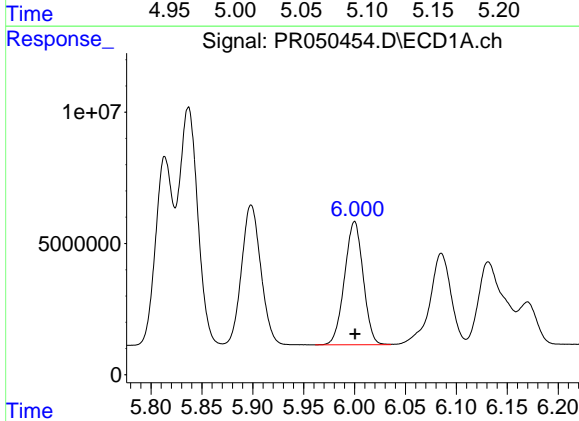
R.T.: 5.837 min  
Delta R.T.: 0.000 min  
Response: 116675039  
Conc: 968.80 ng/ml

Instrument :  
ECD\_R  
ClientSampled :



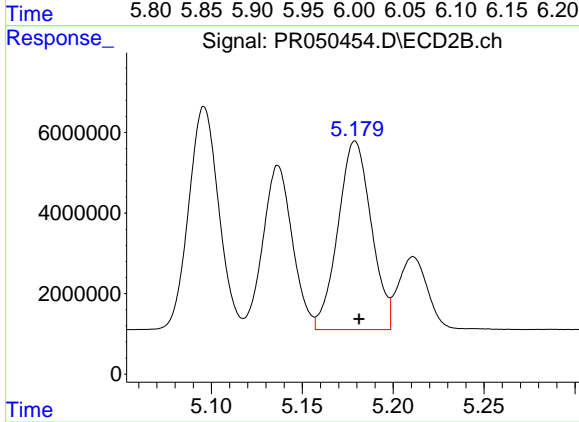
#13 AR-1232-3

R.T.: 5.096 min  
Delta R.T.: -0.001 min  
Response: 63466083  
Conc: 915.85 ng/ml



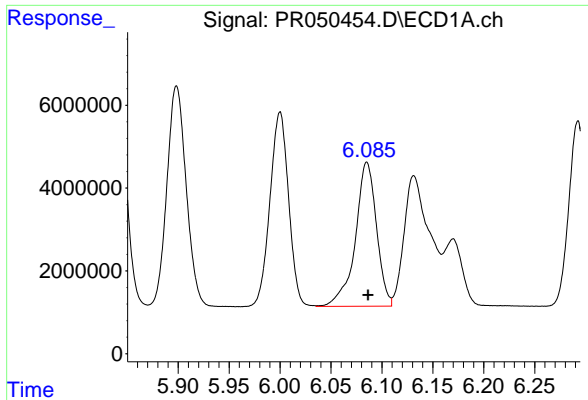
#14 AR-1232-4

R.T.: 6.000 min  
Delta R.T.: 0.000 min  
Response: 59924740  
Conc: 977.42 ng/ml



#14 AR-1232-4

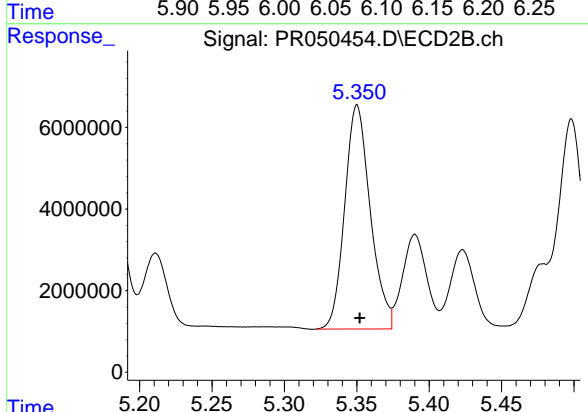
R.T.: 5.179 min  
Delta R.T.: -0.002 min  
Response: 59766186  
Conc: 984.56 ng/ml



#15 AR-1232-5

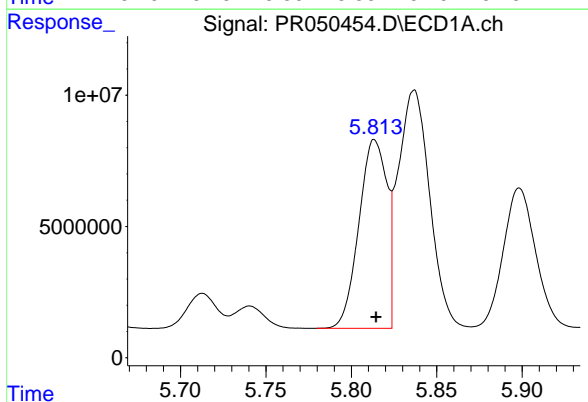
R.T.: 6.085 min  
 Delta R.T.: -0.001 min  
 Response: 50371810  
 Conc: 1052.62 ng/ml

Instrument :  
 ECD\_R  
 ClientSampleId :



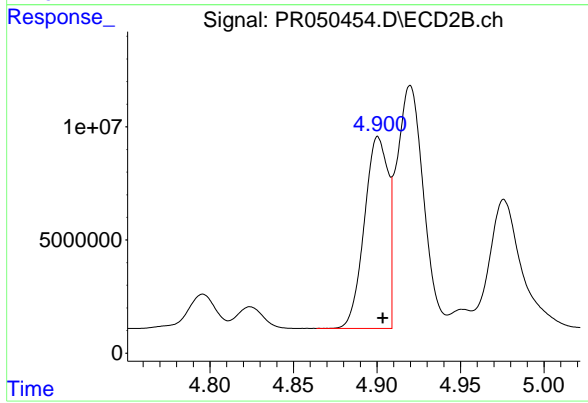
#15 AR-1232-5

R.T.: 5.350 min  
 Delta R.T.: -0.002 min  
 Response: 67571250  
 Conc: 987.50 ng/ml



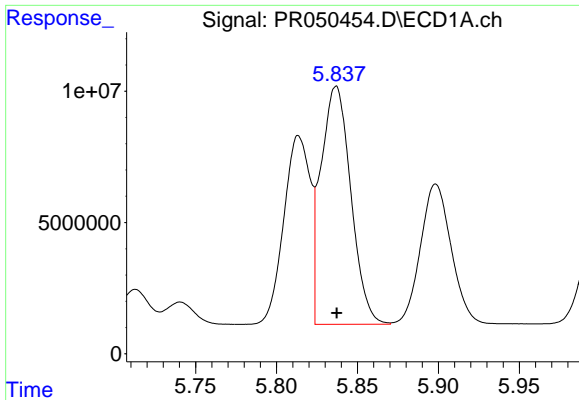
#16 AR-1242-1

R.T.: 5.814 min  
 Delta R.T.: 0.000 min  
 Response: 81838228  
 Conc: 469.45 ng/ml



#16 AR-1242-1

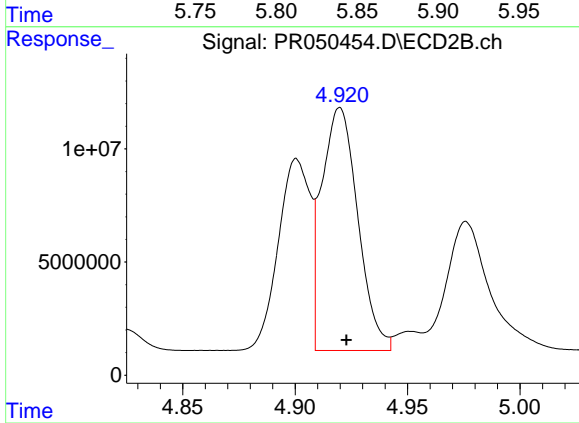
R.T.: 4.901 min  
 Delta R.T.: -0.003 min  
 Response: 83813116  
 Conc: 451.15 ng/ml



#17 AR-1242-2

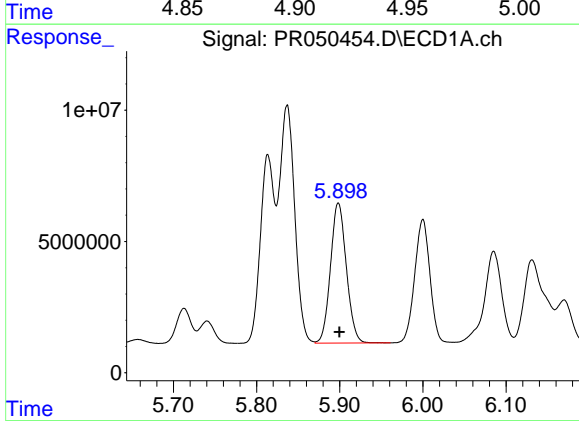
R.T.: 5.837 min  
 Delta R.T.: 0.000 min  
 Response: 116675039  
 Conc: 472.57 ng/ml

Instrument :  
 ECD\_R  
 ClientSampled :



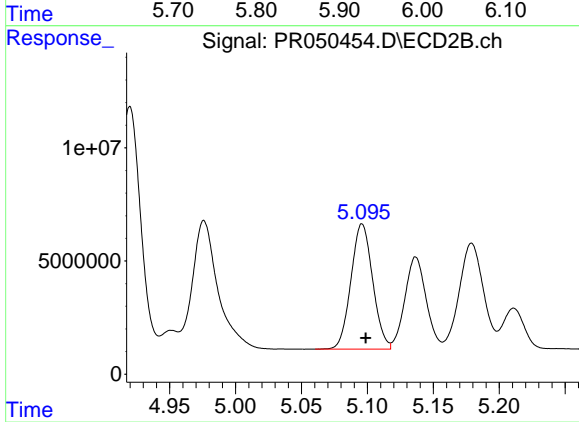
#17 AR-1242-2

R.T.: 4.920 min  
 Delta R.T.: -0.003 min  
 Response: 120087715  
 Conc: 446.47 ng/ml



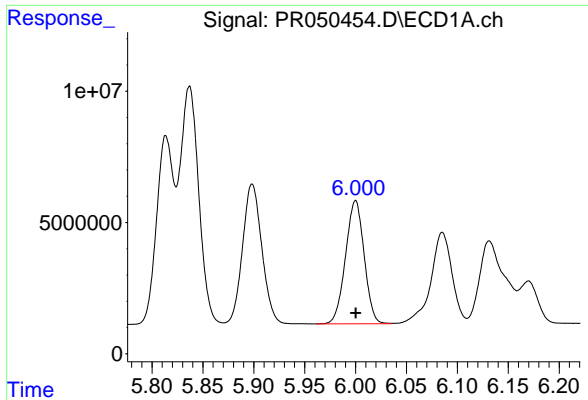
#18 AR-1242-3

R.T.: 5.898 min  
 Delta R.T.: -0.001 min  
 Response: 70697901  
 Conc: 465.62 ng/ml



#18 AR-1242-3

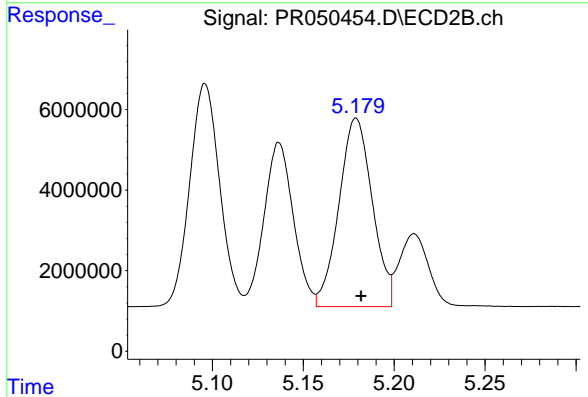
R.T.: 5.096 min  
 Delta R.T.: -0.003 min  
 Response: 63466083  
 Conc: 438.34 ng/ml



#19 AR-1242-4

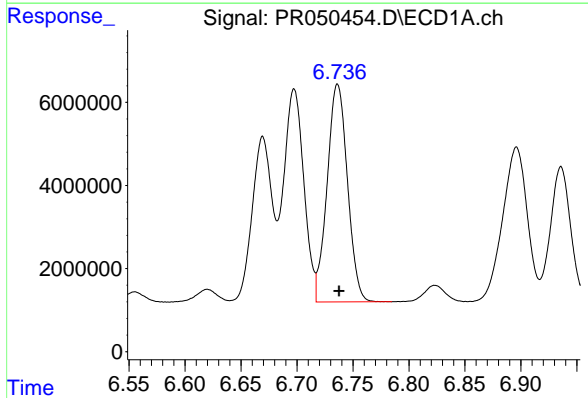
R.T.: 6.000 min  
 Delta R.T.: 0.000 min  
 Response: 59924740  
 Conc: 465.92 ng/ml

Instrument :  
 ECD\_R  
 ClientSampleId :



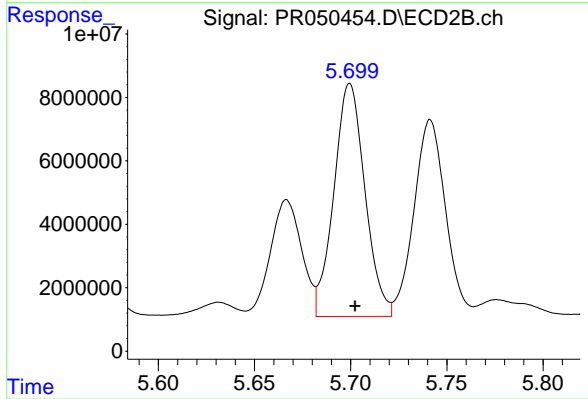
#19 AR-1242-4

R.T.: 5.179 min  
 Delta R.T.: -0.003 min  
 Response: 59766186  
 Conc: 430.44 ng/ml



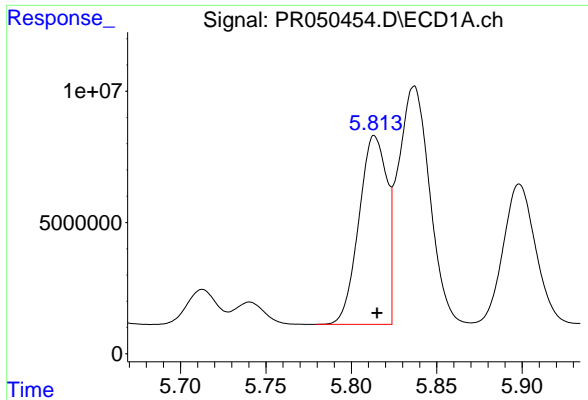
#20 AR-1242-5

R.T.: 6.736 min  
 Delta R.T.: -0.001 min  
 Response: 66241064  
 Conc: 413.58 ng/ml



#20 AR-1242-5

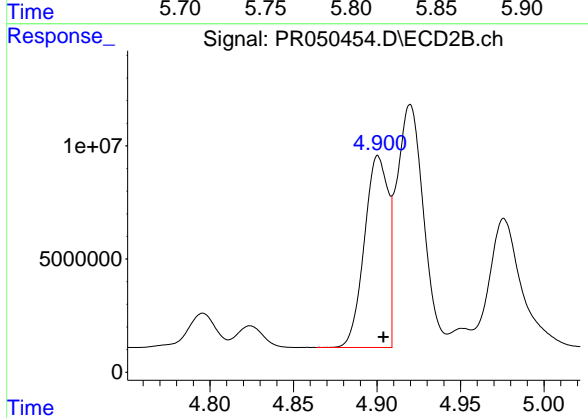
R.T.: 5.700 min  
 Delta R.T.: -0.003 min  
 Response: 82316811  
 Conc: 415.99 ng/ml



#21 AR-1248-1

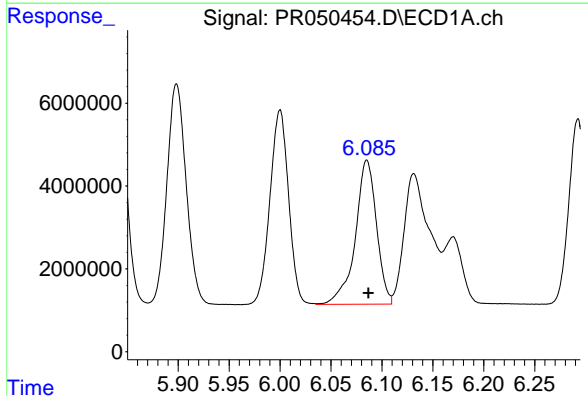
R.T.: 5.814 min  
 Delta R.T.: -0.002 min  
 Response: 81838228  
 Conc: 672.09 ng/ml

Instrument :  
 ECD\_R  
 ClientSampleId :



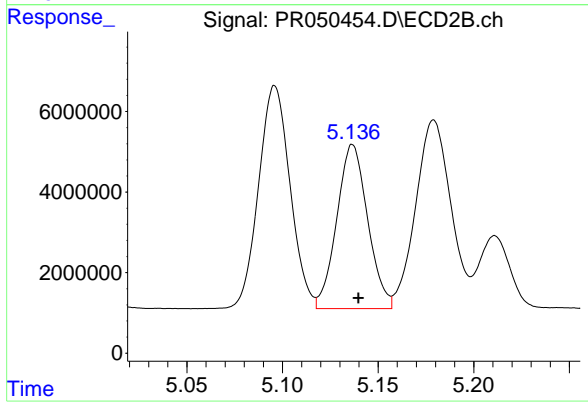
#21 AR-1248-1

R.T.: 4.901 min  
 Delta R.T.: -0.003 min  
 Response: 83813116  
 Conc: 643.25 ng/ml



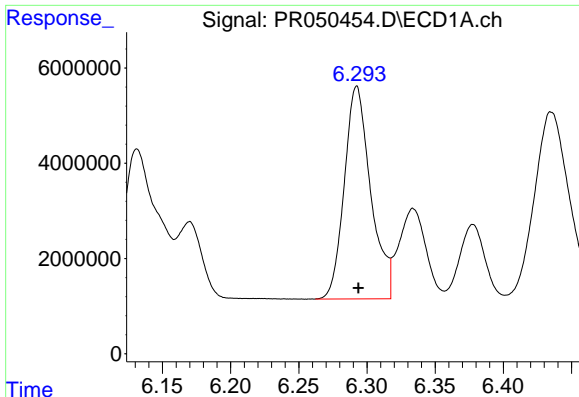
#22 AR-1248-2

R.T.: 6.085 min  
 Delta R.T.: -0.002 min  
 Response: 50371810  
 Conc: 275.12 ng/ml



#22 AR-1248-2

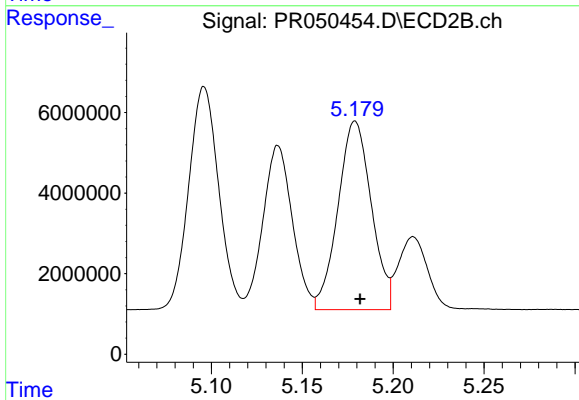
R.T.: 5.137 min  
 Delta R.T.: -0.003 min  
 Response: 45825820  
 Conc: 255.36 ng/ml



#23 AR-1248-3

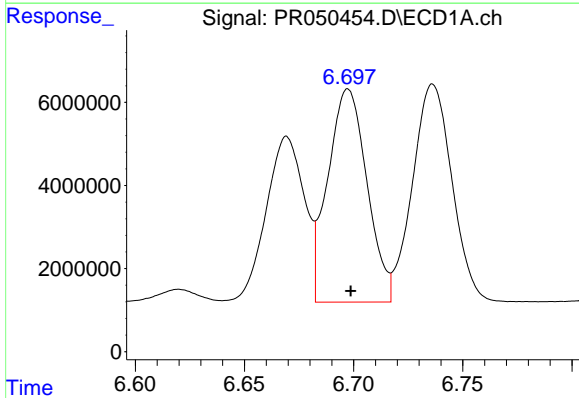
R.T.: 6.292 min  
Delta R.T.: -0.001 min  
Response: 60227210  
Conc: 284.25 ng/ml

Instrument :  
ECD\_R  
ClientSampleId :



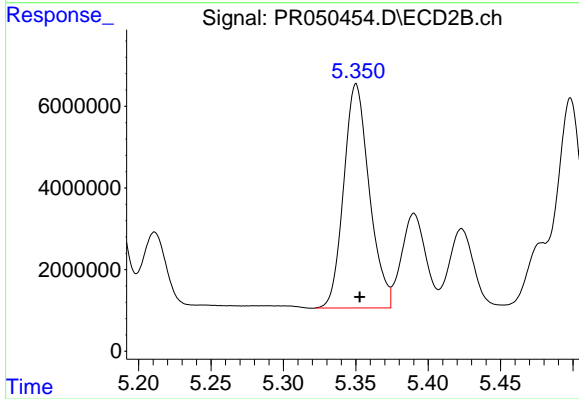
#23 AR-1248-3

R.T.: 5.179 min  
Delta R.T.: -0.003 min  
Response: 59766186  
Conc: 311.55 ng/ml



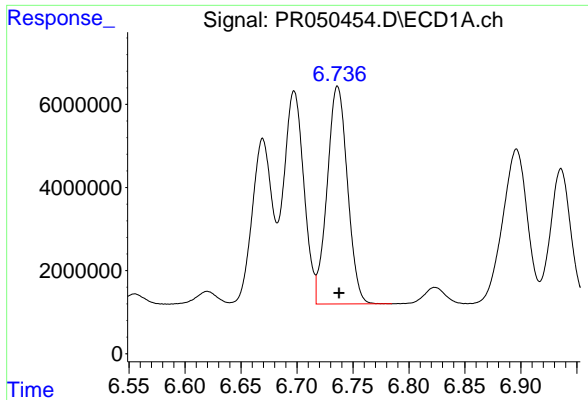
#24 AR-1248-4

R.T.: 6.697 min  
Delta R.T.: -0.001 min  
Response: 64108323  
Conc: 242.51 ng/ml



#24 AR-1248-4

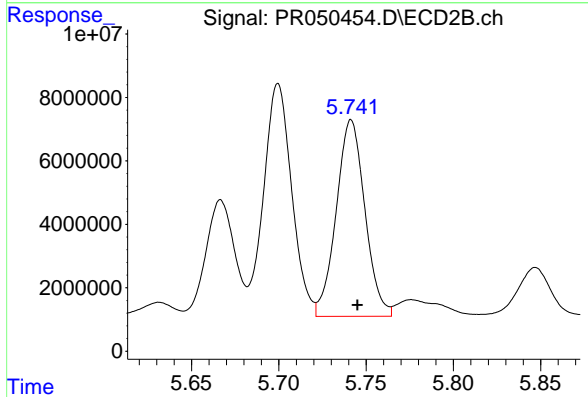
R.T.: 5.350 min  
Delta R.T.: -0.003 min  
Response: 67571250  
Conc: 284.59 ng/ml



#25 AR-1248-5

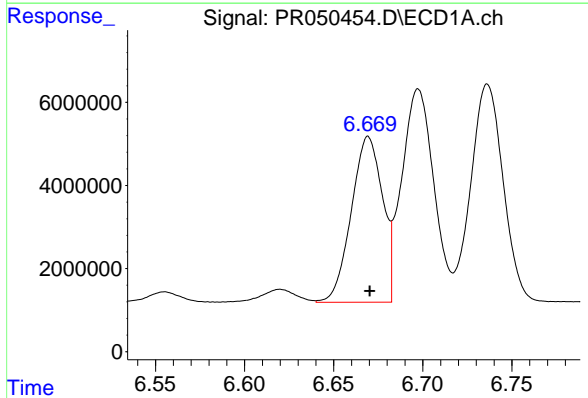
R.T.: 6.736 min  
 Delta R.T.: -0.001 min  
 Response: 66241064  
 Conc: 259.35 ng/ml

Instrument :  
 ECD\_R  
 ClientSampled :



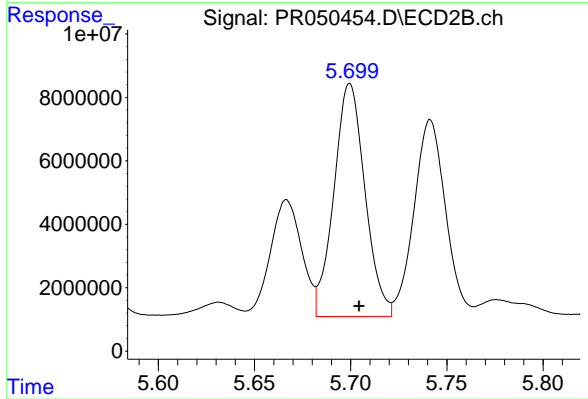
#25 AR-1248-5

R.T.: 5.741 min  
 Delta R.T.: -0.003 min  
 Response: 70893562  
 Conc: 270.31 ng/ml



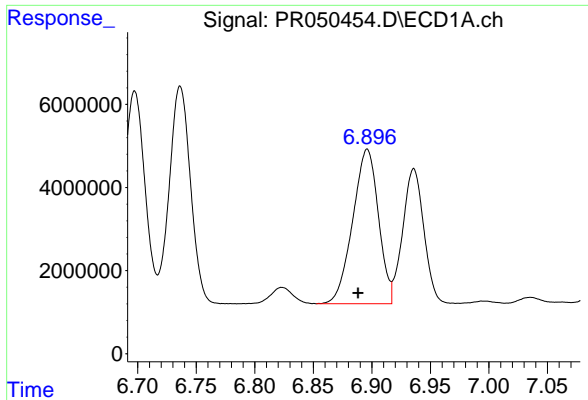
#26 AR-1254-1

R.T.: 6.669 min  
 Delta R.T.: 0.000 min  
 Response: 48635839  
 Conc: 131.17 ng/ml



#26 AR-1254-1

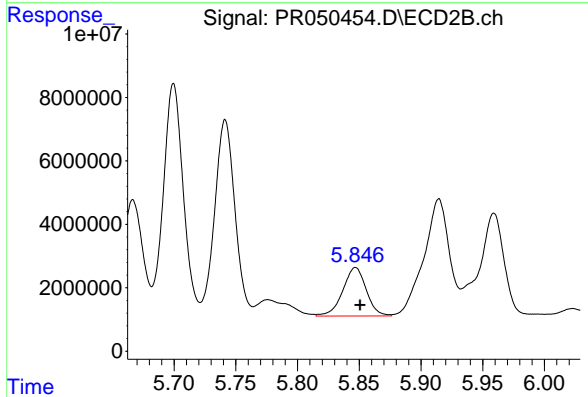
R.T.: 5.700 min  
 Delta R.T.: -0.005 min  
 Response: 82316811  
 Conc: 148.61 ng/ml



#27 AR-1254-2

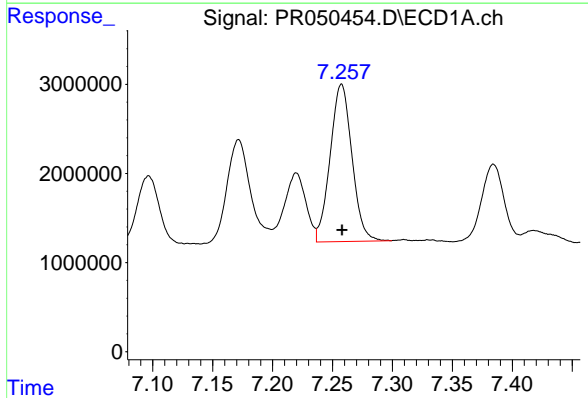
R.T.: 6.896 min  
 Delta R.T.: 0.008 min  
 Response: 56897731  
 Conc: 95.84 ng/ml

Instrument :  
 ECD\_R  
 ClientSampleId :



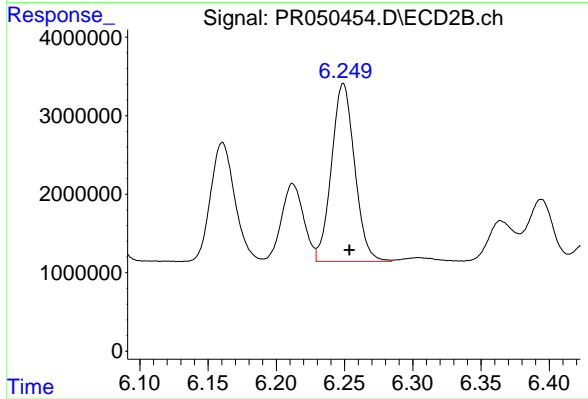
#27 AR-1254-2

R.T.: 5.847 min  
 Delta R.T.: -0.004 min  
 Response: 20214911  
 Conc: 41.44 ng/ml



#28 AR-1254-3

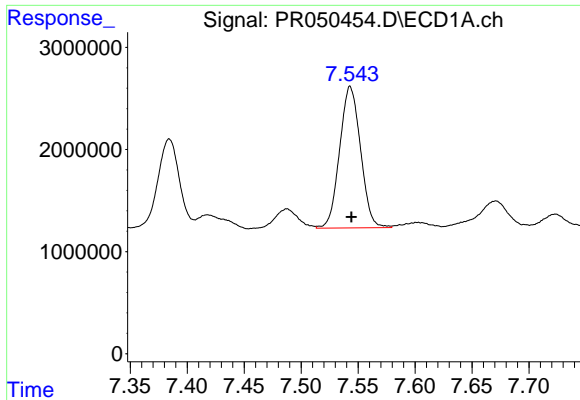
R.T.: 7.258 min  
 Delta R.T.: 0.000 min  
 Response: 22354891  
 Conc: 33.42 ng/ml



#28 AR-1254-3

R.T.: 6.249 min  
 Delta R.T.: -0.004 min  
 Response: 26740602  
 Conc: 30.61 ng/ml

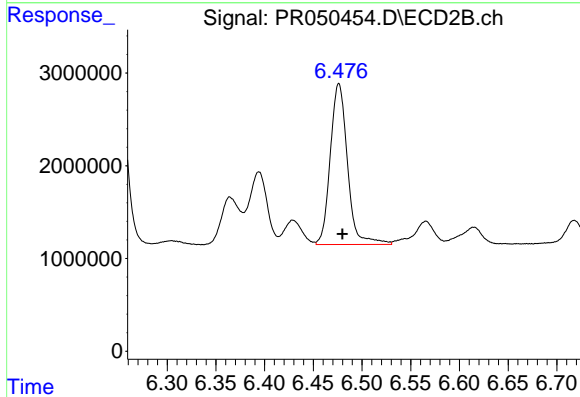




#29 AR-1254-4

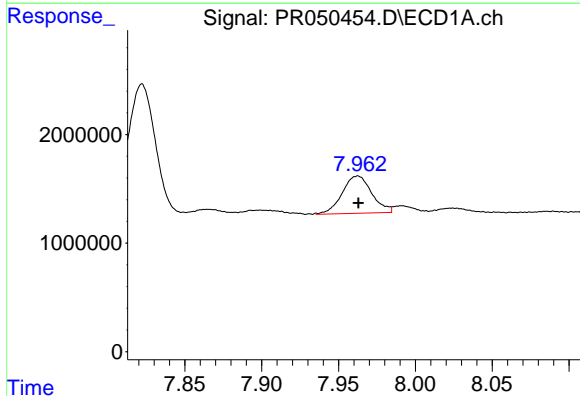
R.T.: 7.543 min  
Delta R.T.: 0.000 min  
Response: 17682327  
Conc: 34.88 ng/ml

Instrument :  
ECD\_R  
ClientSampleId :



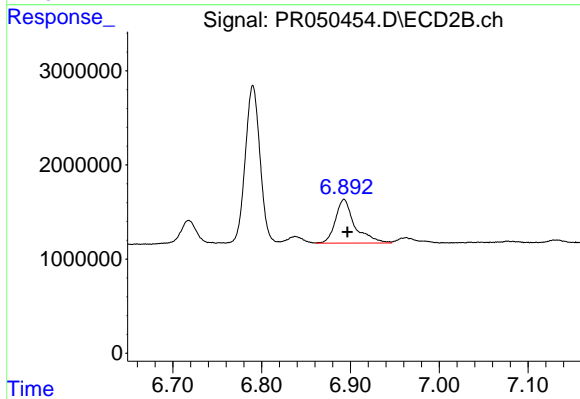
#29 AR-1254-4

R.T.: 6.476 min  
Delta R.T.: -0.004 min  
Response: 21346291  
Conc: 38.22 ng/ml



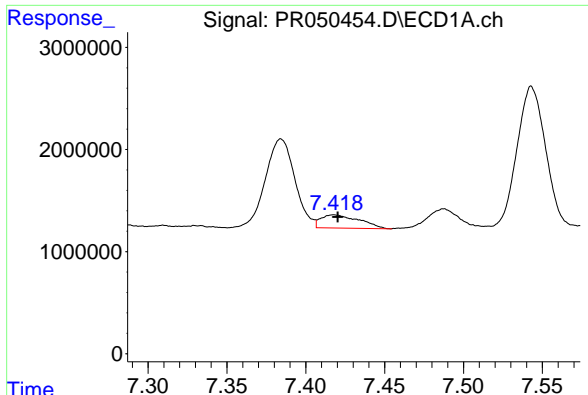
#30 AR-1254-5

R.T.: 7.963 min  
Delta R.T.: 0.000 min  
Response: 4609456  
Conc: 8.44 ng/ml



#30 AR-1254-5

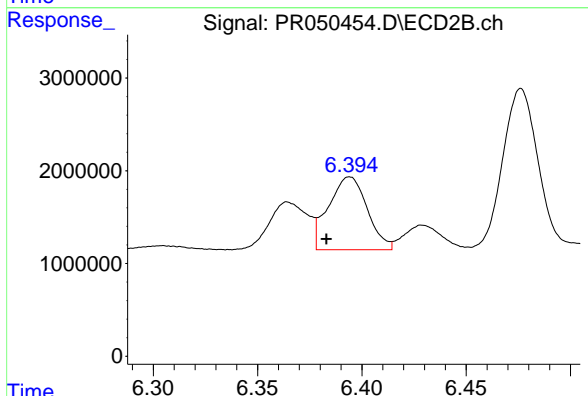
R.T.: 6.893 min  
Delta R.T.: -0.004 min  
Response: 7043243  
Conc: 8.69 ng/ml



#31 AR-1260-1

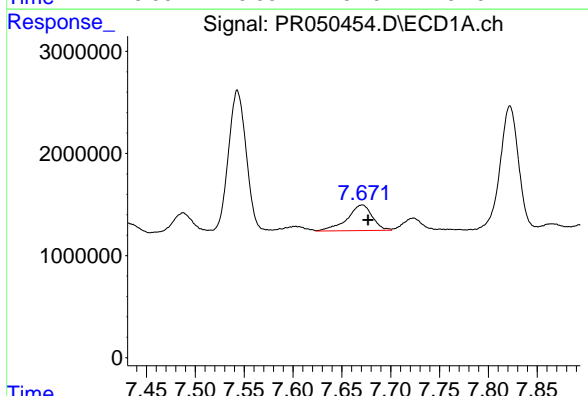
R.T.: 7.418 min  
 Delta R.T.: -0.002 min  
 Response: 2191968  
 Conc: 8.31 ng/ml

Instrument :  
 ECD\_R  
 ClientSampleId :



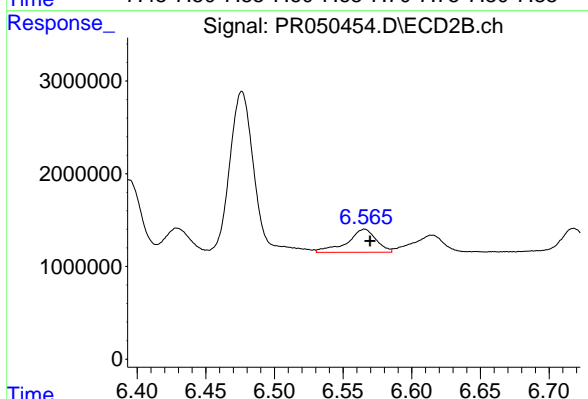
#31 AR-1260-1

R.T.: 6.394 min  
 Delta R.T.: 0.011 min  
 Response: 10168564  
 Conc: 30.57 ng/ml



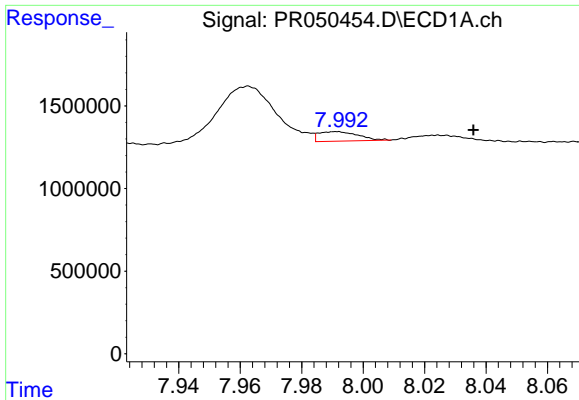
#32 AR-1260-2

R.T.: 7.671 min  
 Delta R.T.: -0.006 min  
 Response: 4477228  
 Conc: 13.89 ng/ml



#32 AR-1260-2

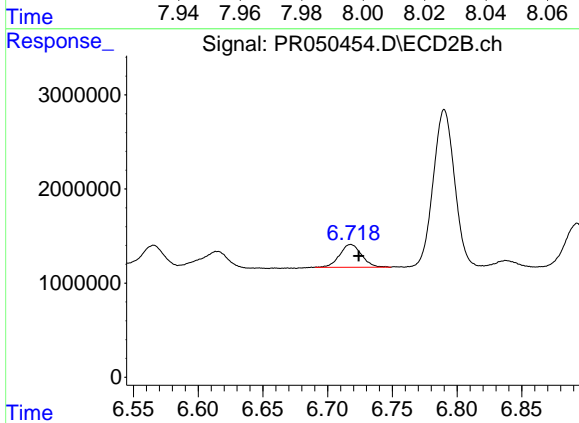
R.T.: 6.566 min  
 Delta R.T.: -0.004 min  
 Response: 3660305  
 Conc: 8.84 ng/ml



#33 AR-1260-3

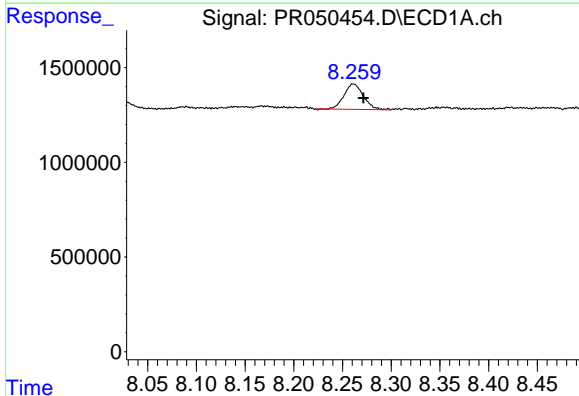
R.T.: 7.991 min  
 Delta R.T.: -0.045 min  
 Response: 517165  
 Conc: 2.10 ng/ml

Instrument :  
 ECD\_R  
 ClientSampleId :



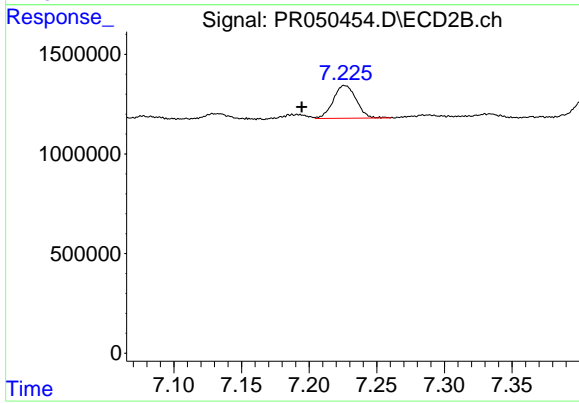
#33 AR-1260-3

R.T.: 6.718 min  
 Delta R.T.: -0.006 min  
 Response: 2866373  
 Conc: 7.25 ng/ml



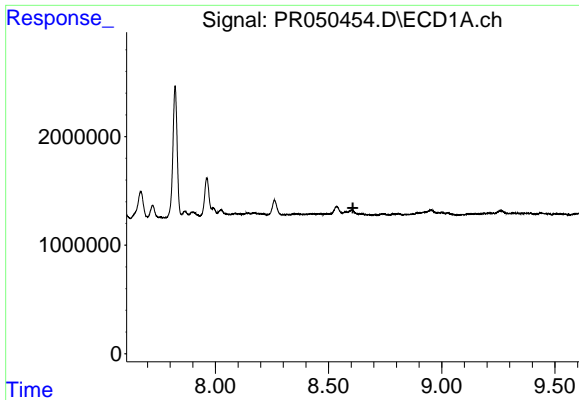
#34 AR-1260-4

R.T.: 8.261 min  
 Delta R.T.: -0.010 min  
 Response: 1861426  
 Conc: 6.36 ng/ml



#34 AR-1260-4

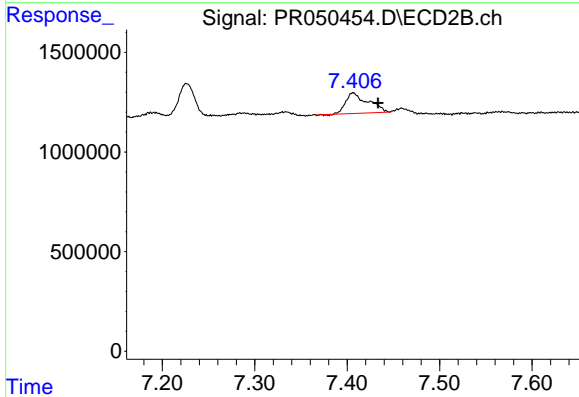
R.T.: 7.226 min  
 Delta R.T.: 0.032 min  
 Response: 1938717  
 Conc: 5.61 ng/ml



#35 AR-1260-5

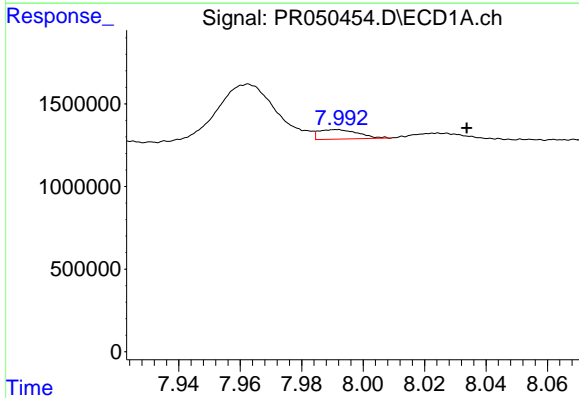
R.T.: 0.000 min  
 Exp R.T.: 8.608 min  
 Response: 0  
 Conc: N.D.

Instrument :  
 ECD\_R  
 ClientSampleId :



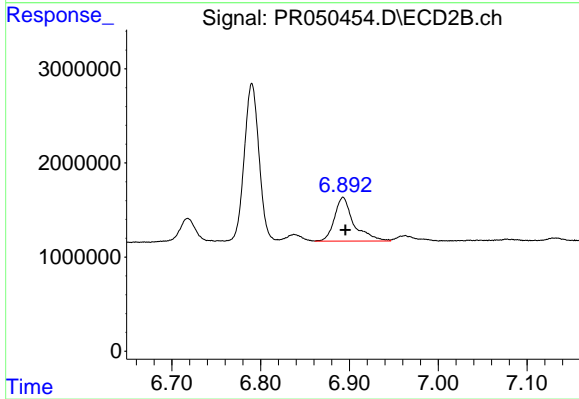
#35 AR-1260-5

R.T.: 7.406 min  
 Delta R.T.: -0.027 min  
 Response: 1720497  
 Conc: 1.98 ng/ml



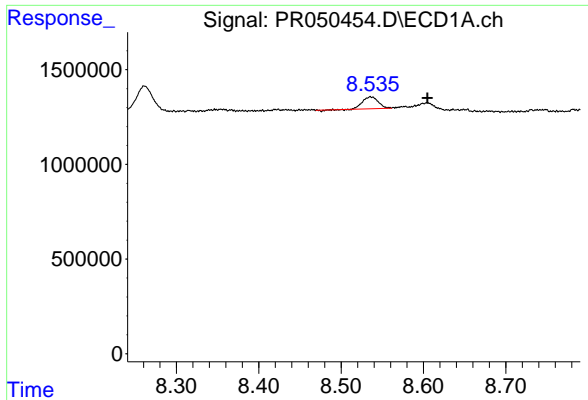
#36 AR-1262-1

R.T.: 7.991 min  
 Delta R.T.: -0.043 min  
 Response: 517165  
 Conc: 1.05 ng/ml



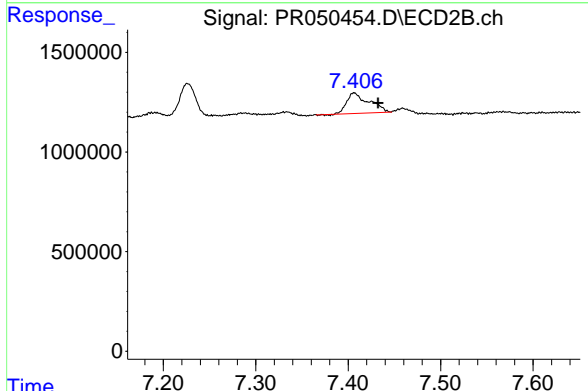
#36 AR-1262-1

R.T.: 6.893 min  
 Delta R.T.: -0.003 min  
 Response: 7043243  
 Conc: 21.42 ng/ml

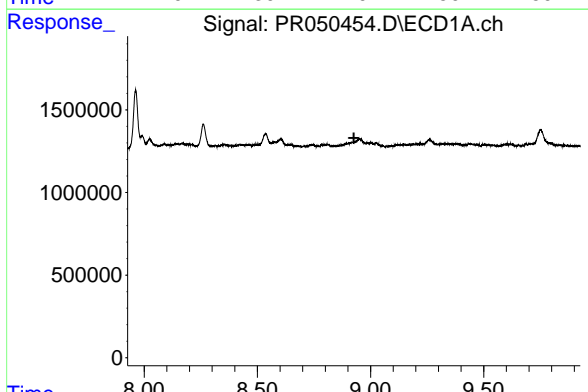


#37 AR-1262-2  
 R.T.: 8.536 min  
 Delta R.T.: -0.069 min  
 Response: 809415  
 Conc: 0.88 ng/ml

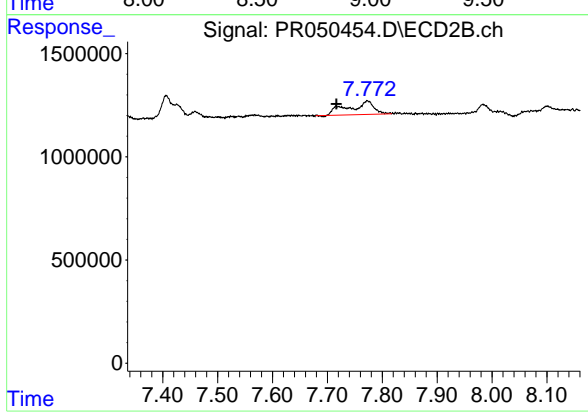
Instrument :  
 ECD\_R  
 ClientSampled :



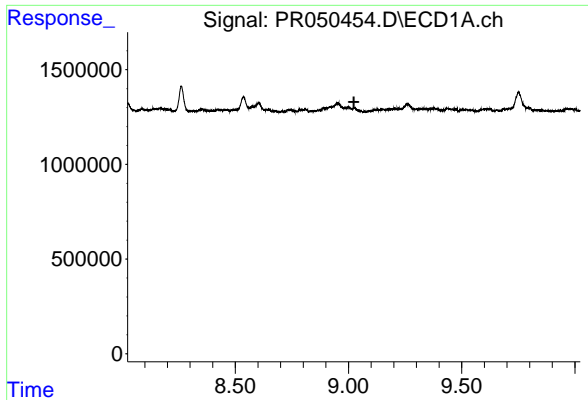
#37 AR-1262-2  
 R.T.: 7.406 min  
 Delta R.T.: -0.026 min  
 Response: 1720497  
 Conc: 1.41 ng/ml



#38 AR-1262-3  
 R.T.: 0.000 min  
 Exp R.T. : 8.927 min  
 Response: 0  
 Conc: N.D.



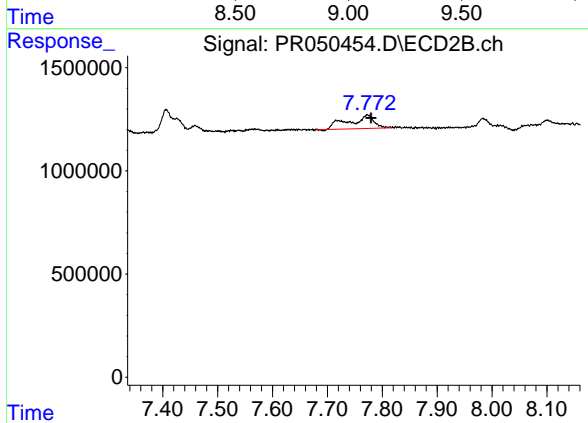
#38 AR-1262-3  
 R.T.: 7.773 min  
 Delta R.T.: 0.056 min  
 Response: 2049340  
 Conc: 4.56 ng/ml



#39 AR-1262-4

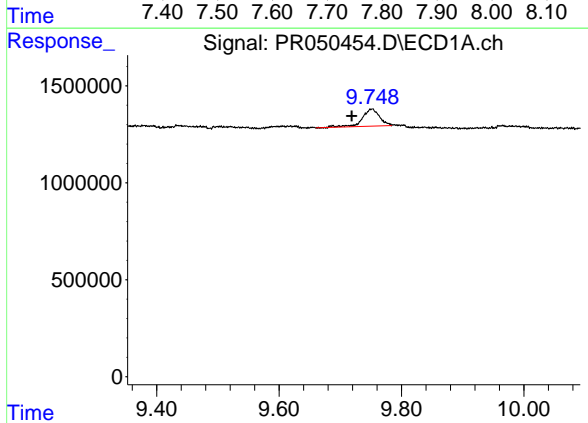
R.T.: 0.000 min  
 Exp R.T.: 9.024 min  
 Response: 0  
 Conc: N.D.

Instrument :  
 ECD\_R  
 ClientSampled :



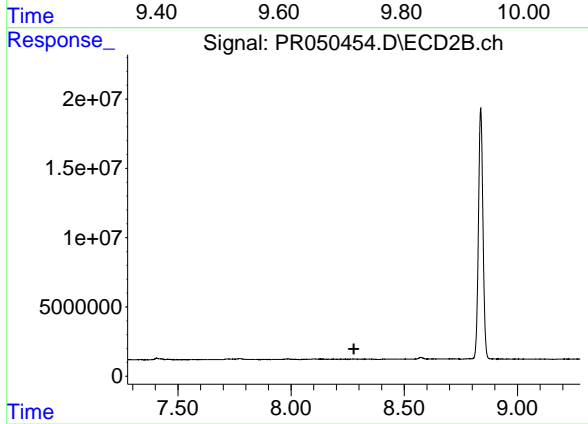
#39 AR-1262-4

R.T.: 7.773 min  
 Delta R.T.: -0.007 min  
 Response: 2049340  
 Conc: 2.30 ng/ml



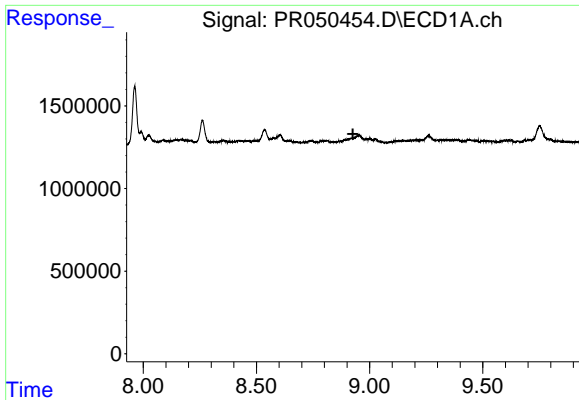
#40 AR-1262-5

R.T.: 9.752 min  
 Delta R.T.: 0.033 min  
 Response: 1739742  
 Conc: 5.39 ng/ml



#40 AR-1262-5

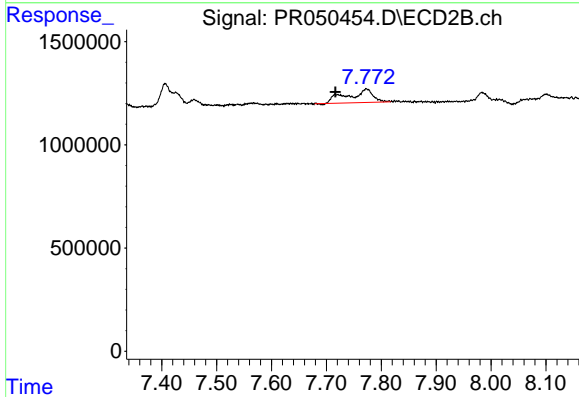
R.T.: 0.000 min  
 Exp R.T.: 8.277 min  
 Response: 0  
 Conc: N.D.



#41 AR-1268-1

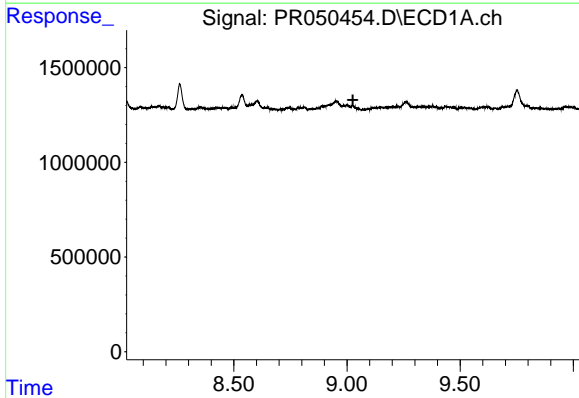
R.T.: 0.000 min  
 Exp R.T. : 8.926 min  
 Response: 0  
 Conc: N.D.

Instrument :  
 ECD\_R  
 ClientSampleId :



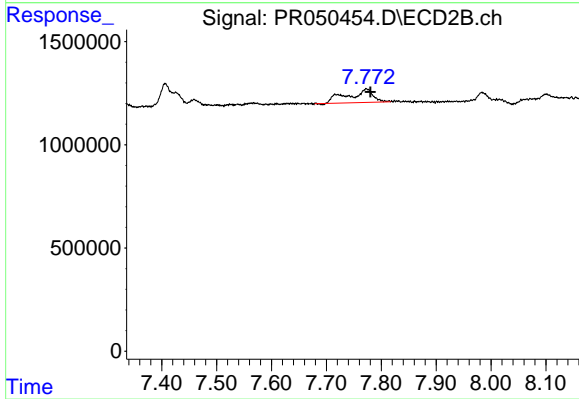
#41 AR-1268-1

R.T.: 7.773 min  
 Delta R.T.: 0.057 min  
 Response: 2049340  
 Conc: 1.42 ng/ml



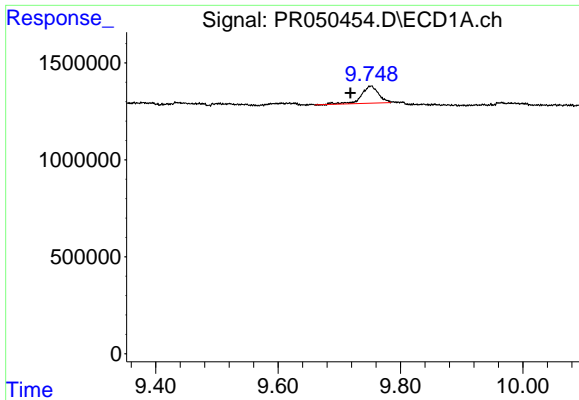
#42 AR-1268-2

R.T.: 0.000 min  
 Exp R.T. : 9.026 min  
 Response: 0  
 Conc: N.D.



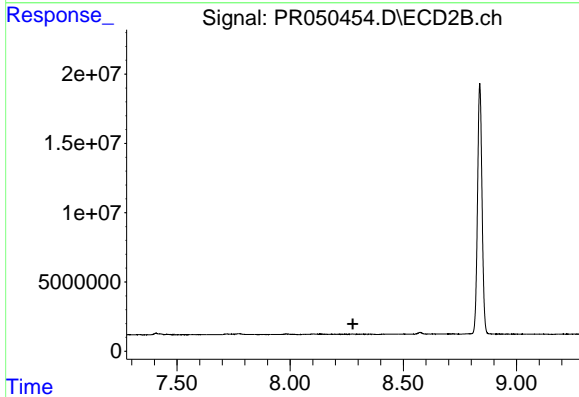
#42 AR-1268-2

R.T.: 7.773 min  
 Delta R.T.: -0.007 min  
 Response: 2049340  
 Conc: 1.53 ng/ml

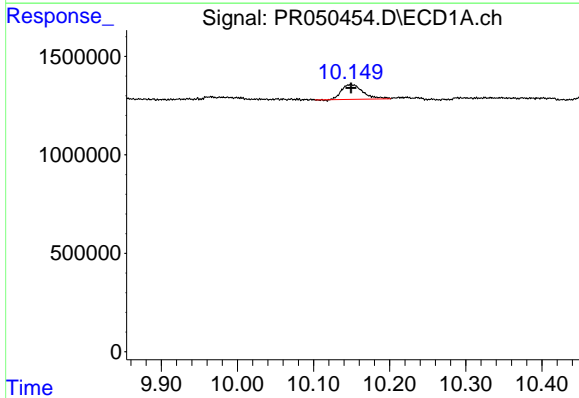


#44 AR-1268-4  
 R.T.: 9.752 min  
 Delta R.T.: 0.034 min  
 Response: 1739742  
 Conc: 4.58 ng/ml

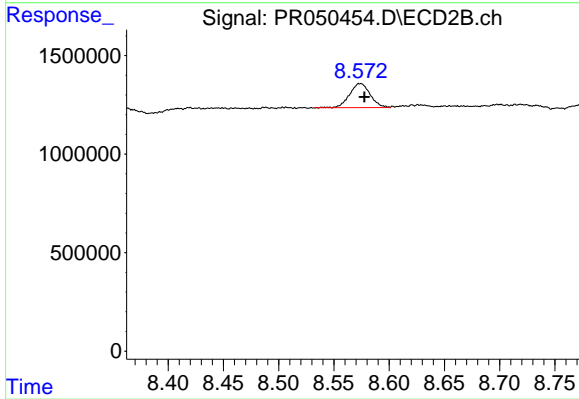
Instrument :  
 ECD\_R  
 ClientSampled :



#44 AR-1268-4  
 R.T.: 0.000 min  
 Exp R.T. : 8.277 min  
 Response: 0  
 Conc: N.D.



#45 AR-1268-5  
 R.T.: 10.149 min  
 Delta R.T.: 0.000 min  
 Response: 1452985  
 Conc: 0.49 ng/ml



#45 AR-1268-5  
 R.T.: 8.574 min  
 Delta R.T.: -0.004 min  
 Response: 1589475  
 Conc: 0.44 ng/ml