

Data Path : Z:\pestpcbsrv\HPCHEM1\ECD_R\Data\PR052524\
 Data File : PR066921.D
 Signal(s) : Signal #1: ECD1A.ch Signal #2: ECD2B.ch
 Acq On : 24 May 2024 15:37
 Operator : AJ\MA
 Sample : AR1660CCC400
 Misc :
 ALS Vial : 3 Sample Multiplier: 1

Instrument :
 ECD_R
 ClientSampleId :

Integration File signal 1: autoint1.e
 Integration File signal 2: autoint2.e
 Quant Time: May 25 00:12:47 2024
 Quant Method : Z:\pestpcbsrv\HPCHEM1\ECD_R\Method\PR052124CLP.M
 Quant Title : GC EXTRACTABLES
 QLast Update : Wed May 22 04:28:16 2024
 Response via : Initial Calibration
 Integrator: ChemStation

Volume Inj. : 1 µl
 Signal #1 Phase : ZB MR1 Signal #2 Phase: ZB MR2
 Signal #1 Info : 30Mx0.32mmx 0.5µm Signal #2 Info : 30M x 0.32mm x 0.25µm

Compound	RT#1	RT#2	Resp#1	Resp#2	ng/ml	ng/ml

System Monitoring Compounds						
1) SA Tetrachlo...	3.650	2.891	124.2E6	87014635	20.248	18.689
2) SA Decachlor...	9.530	8.119	53901528	79213953	41.512	35.578
Target Compounds						
3) L1 AR-1016-1	4.870	4.000	67919315	57291758	423.448	381.644
4) L1 AR-1016-2	4.891	4.018	107.2E6	85879412	417.547	387.564
5) L1 AR-1016-3	4.955	4.195	70133812	47560652	407.435	386.031
6) L1 AR-1016-4	5.057	4.246	54871298	38880163	413.695	372.272
7) L1 AR-1016-5	5.371	4.462	54841423	50049314	406.344	377.886
8) L2 AR-1221-1	3.868	3.114	8535413	6405646	130.812	115.349
9) L2 AR-1221-2	3.960	3.201	10241645	8317953	219.428	207.802
10) L2 AR-1221-3	4.038	3.277	43556213	34347646	288.703	272.198
11) L3 AR-1232-1	4.038	3.277	43556213	34347646	343.282	320.944
12) L3 AR-1232-2	4.585	4.018	60350601	85879412	849.406	828.920
13) L3 AR-1232-3	4.891	4.195	107.2E6	47560652	938.242	860.075
14) L3 AR-1232-4	5.057	4.287	54871298	45878585	948.145	897.449
15) L3 AR-1232-5	5.160	4.462	45332326	50049314	1018.623	903.620
16) L4 AR-1242-1	4.870	4.000	67919315	57291758	550.636	482.306
17) L4 AR-1242-2	4.891	4.018	107.2E6	85879412	545.496	484.180
18) L4 AR-1242-3	4.955	4.195	70133812	47560652	522.850	484.222
19) L4 AR-1242-4	5.057	4.287	54871298	45878585	530.383	463.185
20) L4 AR-1242-5	5.843	4.829	16305168	48775195	154.980	413.966 #
21) L5 AR-1248-1	4.870	4.000	67919315	57291758	747.407	633.581
22) L5 AR-1248-2	5.160	4.246	45332326	38880163	304.526	278.197
23) L5 AR-1248-3	5.371	4.287	54841423	45878585	321.080	328.074
24) L5 AR-1248-4	5.803	4.462	17363639	50049314	110.114	298.725 #
25) L5 AR-1248-5	5.843	4.871	16305168	12221143	91.559	79.103
26) L6 AR-1254-1	5.773	4.829	46938064	48775195	246.229	199.679
27) L6 AR-1254-2	6.011	4.988	43680997	35544653	155.627	164.198
28) L6 AR-1254-3	6.400	5.426	17736928	68251011	66.171	200.671 #
29) L6 AR-1254-4	6.708	5.653	10925812	5645130	67.821	28.767 #
30) L6 AR-1254-5	7.163	6.095	113.9E6	129.1E6	593.191	419.139 #
31) L7 AR-1260-1	6.580	5.547	97163284	99168447	398.467	380.636
32) L7 AR-1260-2	6.862	5.751	105.3E6	118.4E6	406.885	386.117
33) L7 AR-1260-3	7.250	5.908	78906001	110.5E6	397.111	377.022
34) L7 AR-1260-4	7.492	6.412	83790305	93738371	401.134	374.898
35) L7 AR-1260-5	7.829	6.677	141.2E6	205.1E6	412.493	375.804
36) L8 AR-1262-1	7.250	6.139	78906001	101.0E6	304.919	304.648
37) L8 AR-1262-2	7.829	6.677	141.2E6	205.1E6	407.095	368.595
38) L8 AR-1262-3	8.141	6.981	85437800	48780051	374.602	204.384 #
39) L8 AR-1262-4	8.218	7.047	24841332	151.8E6	137.626	355.781 #
40) L8 AR-1262-5	8.840	7.584	32710575	53808948	319.326	274.712
41) L9 AR-1268-1	8.141	6.981	85437800	48780051	205.947	73.306 #

Data Path : Z:\pestpcbsrv\HPCHEM1\ECD_R\Data\PR052524\
 Data File : PR066921.D
 Signal(s) : Signal #1: ECD1A.ch Signal #2: ECD2B.ch
 Acq On : 24 May 2024 15:37
 Operator : AJ\MA
 Sample : AR1660CCC400
 Misc :
 ALS Vial : 3 Sample Multiplier: 1

Instrument :
 ECD_R
 ClientSampleId :

Integration File signal 1: autoint1.e
 Integration File signal 2: autoint2.e
 Quant Time: May 25 00:12:47 2024
 Quant Method : Z:\pestpcbsrv\HPCHEM1\ECD_R\Method\PR052124CLP.M
 Quant Title : GC EXTRACTABLES
 QLast Update : Wed May 22 04:28:16 2024
 Response via : Initial Calibration
 Integrator: ChemStation

Volume Inj. : 1 µl
 Signal #1 Phase : ZB MR1 Signal #2 Phase: ZB MR2
 Signal #1 Info : 30Mx0.32mmx 0.5µm Signal #2 Info : 30M x 0.32mm x 0.25µm

	Compound	RT#1	RT#2	Resp#1	Resp#2	ng/ml	ng/ml
42)	L9 AR-1268-2	8.218	7.047	24841332	151.8E6	67.045	249.101 #
43)	L9 AR-1268-3	8.437	7.270	1732770	2740112	5.326	5.123
44)	L9 AR-1268-4	8.840	7.584	32710575	53808948	288.027	244.129
45)	L9 AR-1268-5	9.222	7.878	8465560	14245424	10.050	9.550

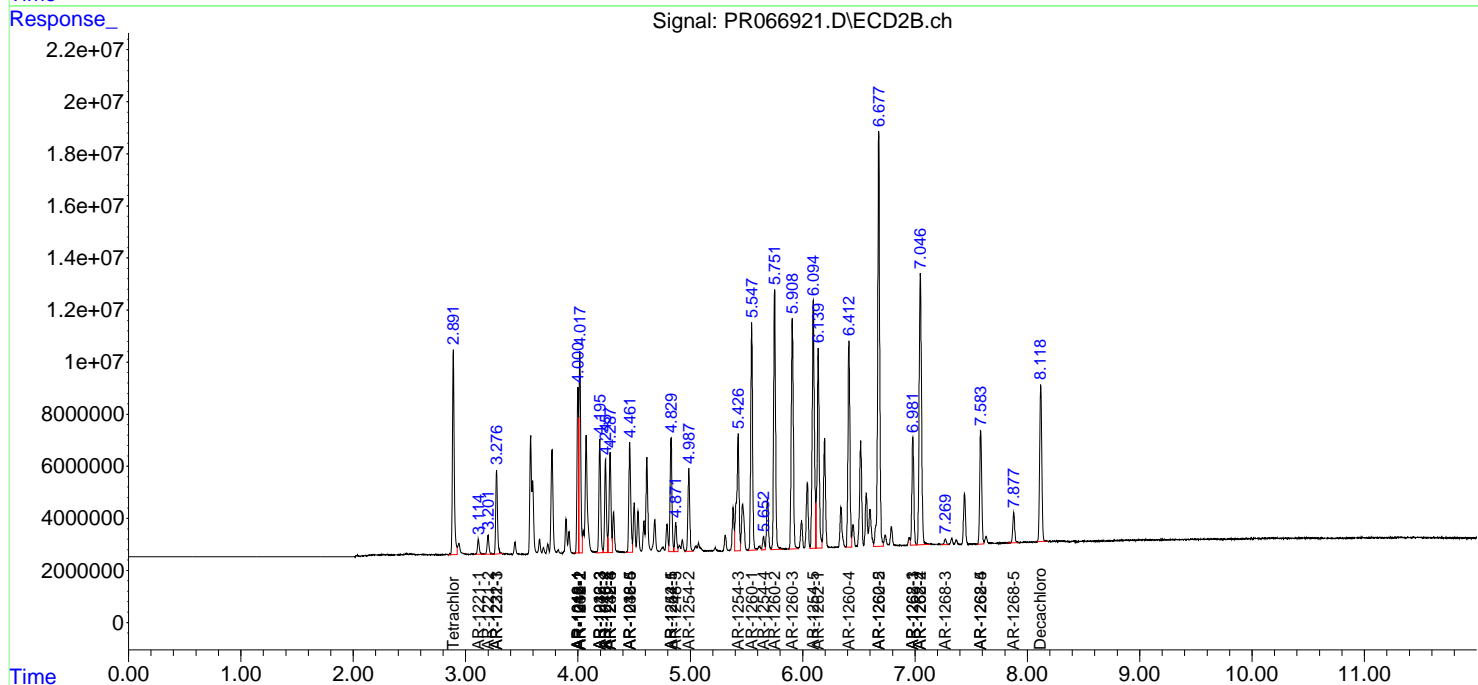
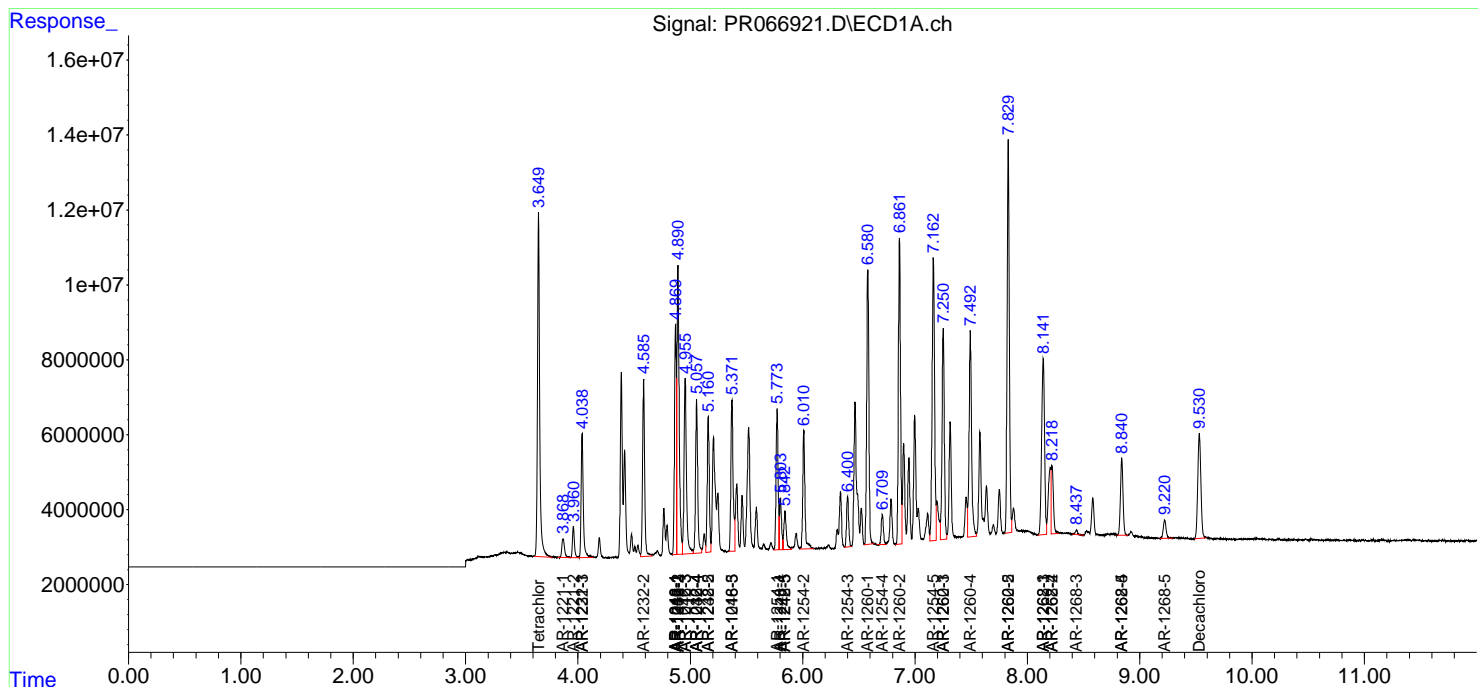
(f)=RT Delta > 1/2 Window (#)=Amounts differ by > 25% (m)=manual int.

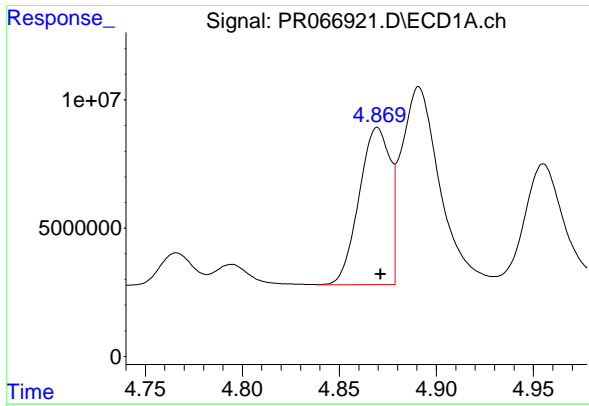
Data Path : Z:\pestpcbsrv\HPCHEM1\ECD_R\Data\PR052524\
 Data File : PR066921.D
 Signal(s) : Signal #1: ECD1A.ch Signal #2: ECD2B.ch
 Acq On : 24 May 2024 15:37
 Operator : AJ\MA
 Sample : AR1660CCC400
 Misc :
 ALS Vial : 3 Sample Multiplier: 1

Instrument :
 ECD_R
 ClientSampleId :

Integration File signal 1: autoint1.e
 Integration File signal 2: autoint2.e
 Quant Time: May 25 00:12:47 2024
 Quant Method : Z:\pestpcbsrv\HPCHEM1\ECD_R\Method\PR052124CLP.M
 Quant Title : GC EXTRACTABLES
 QLast Update : Wed May 22 04:28:16 2024
 Response via : Initial Calibration
 Integrator: ChemStation

Volume Inj. : 1 µl
 Signal #1 Phase : ZB MR1 Signal #2 Phase: ZB MR2
 Signal #1 Info : 30Mx0.32mmx 0.5µm Signal #2 Info : 30M x 0.32mm x 0.25µm

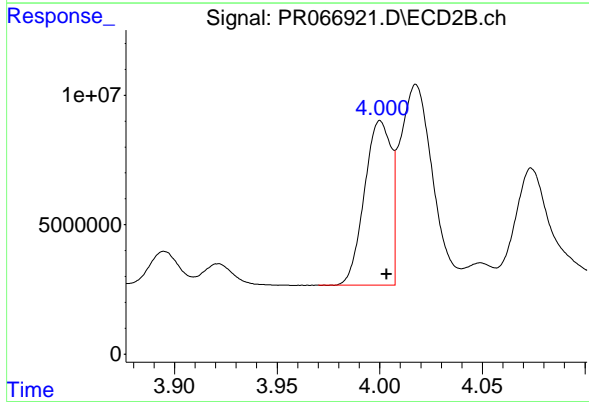




#3 AR-1016-1

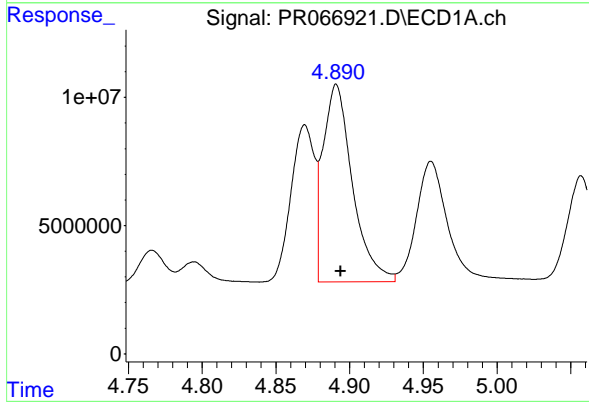
R.T.: 4.870 min
 Delta R.T.: -0.002 min
 Response: 67919315
 Conc: 423.45 ng/ml

Instrument :
 ECD_R
 ClientSampleId :



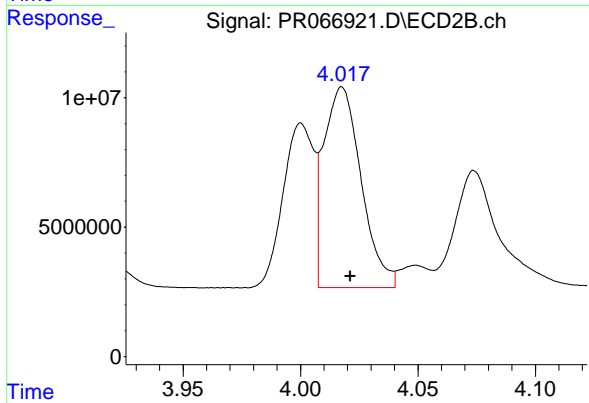
#3 AR-1016-1

R.T.: 4.000 min
 Delta R.T.: -0.003 min
 Response: 57291758
 Conc: 381.64 ng/ml



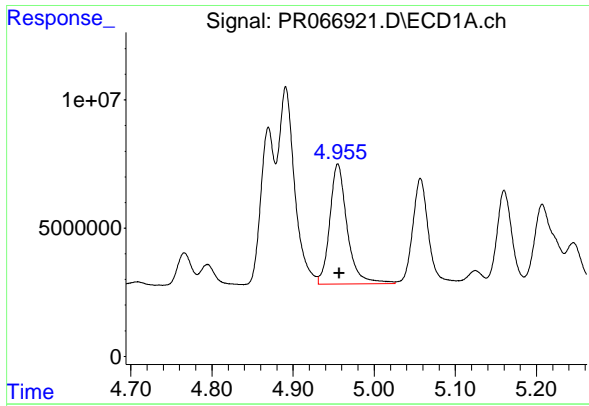
#4 AR-1016-2

R.T.: 4.891 min
 Delta R.T.: -0.003 min
 Response: 107205231
 Conc: 417.55 ng/ml



#4 AR-1016-2

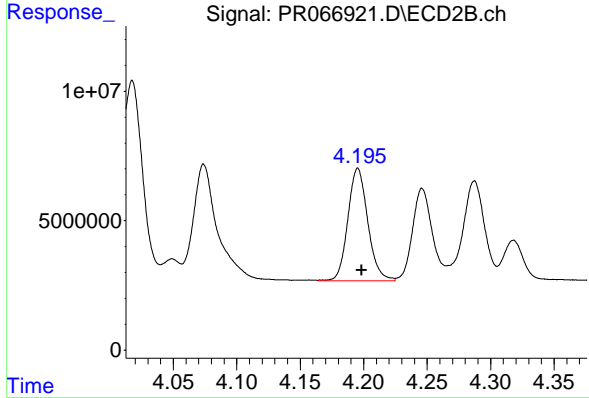
R.T.: 4.018 min
 Delta R.T.: -0.004 min
 Response: 85879412
 Conc: 387.56 ng/ml



#5 AR-1016-3

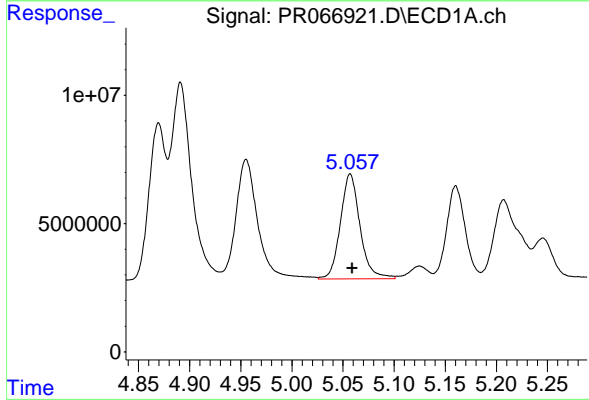
R.T.: 4.955 min
 Delta R.T.: -0.002 min
 Response: 70133812
 Conc: 407.43 ng/ml

Instrument :
 ECD_R
 ClientSampleId :



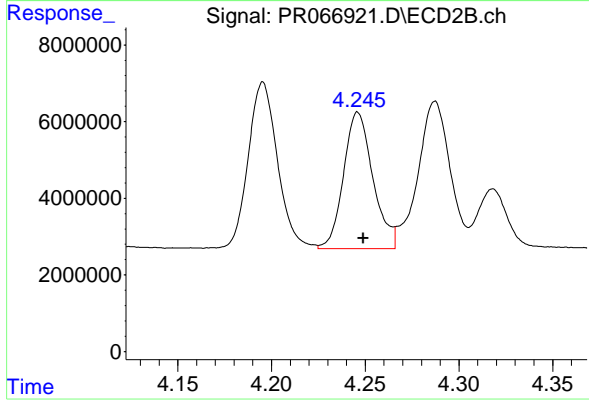
#5 AR-1016-3

R.T.: 4.195 min
 Delta R.T.: -0.003 min
 Response: 47560652
 Conc: 386.03 ng/ml



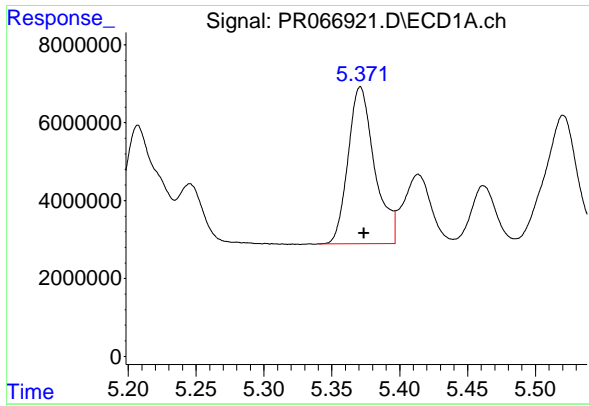
#6 AR-1016-4

R.T.: 5.057 min
 Delta R.T.: -0.002 min
 Response: 54871298
 Conc: 413.69 ng/ml



#6 AR-1016-4

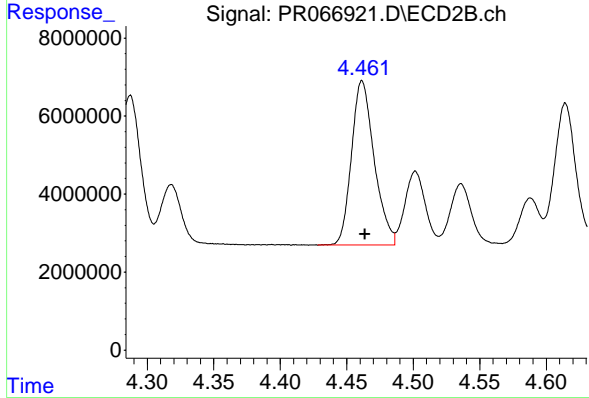
R.T.: 4.246 min
 Delta R.T.: -0.003 min
 Response: 38880163
 Conc: 372.27 ng/ml



#7 AR-1016-5

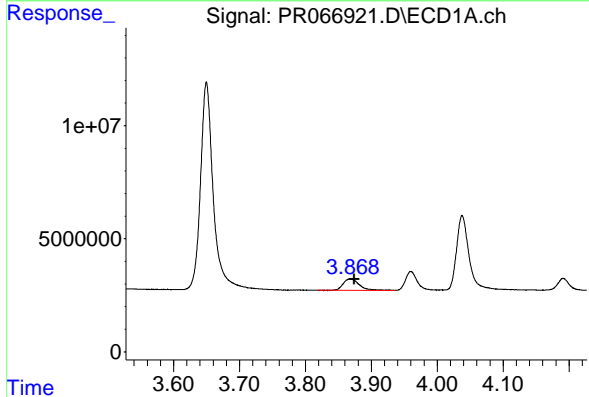
R.T.: 5.371 min
 Delta R.T.: -0.003 min
 Response: 54841423
 Conc: 406.34 ng/ml

Instrument :
 ECD_R
 ClientSampleId :



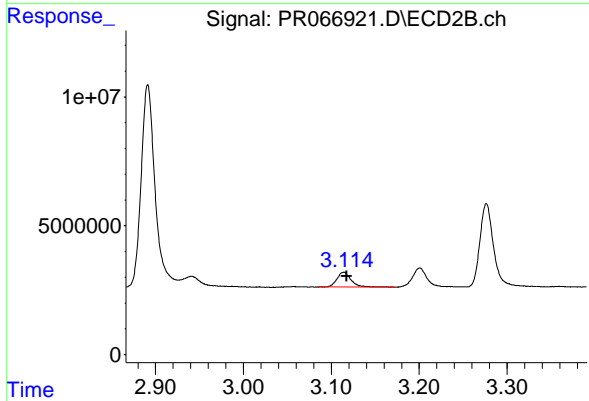
#7 AR-1016-5

R.T.: 4.462 min
 Delta R.T.: -0.002 min
 Response: 50049314
 Conc: 377.89 ng/ml



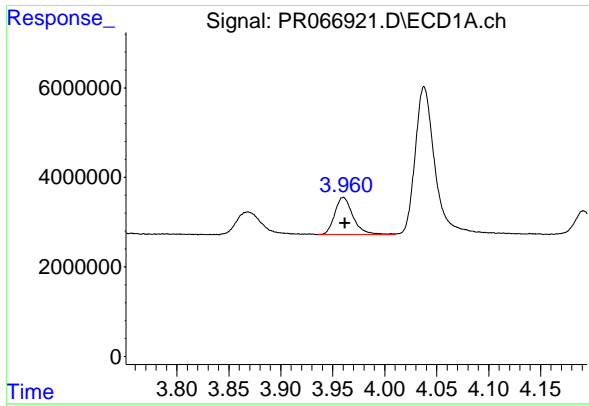
#8 AR-1221-1

R.T.: 3.868 min
 Delta R.T.: -0.006 min
 Response: 8535413
 Conc: 130.81 ng/ml



#8 AR-1221-1

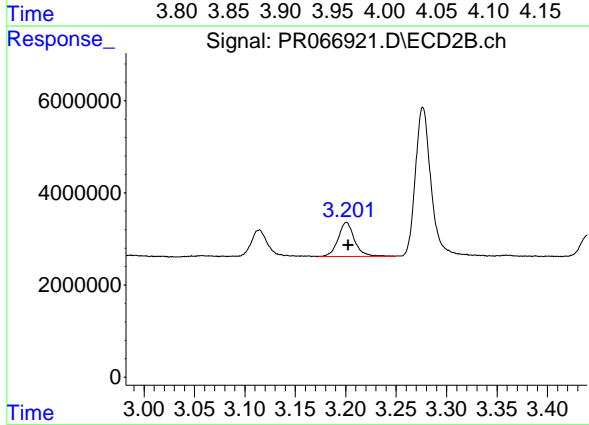
R.T.: 3.114 min
 Delta R.T.: -0.003 min
 Response: 6405646
 Conc: 115.35 ng/ml



#9 AR-1221-2

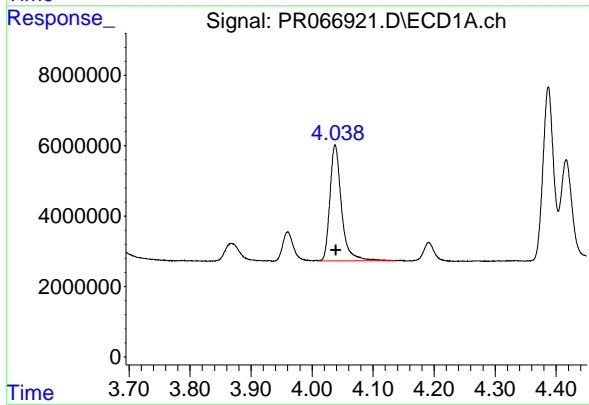
R.T.: 3.960 min
 Delta R.T.: -0.002 min
 Response: 10241645
 Conc: 219.43 ng/ml

Instrument :
 ECD_R
 ClientSampleId :



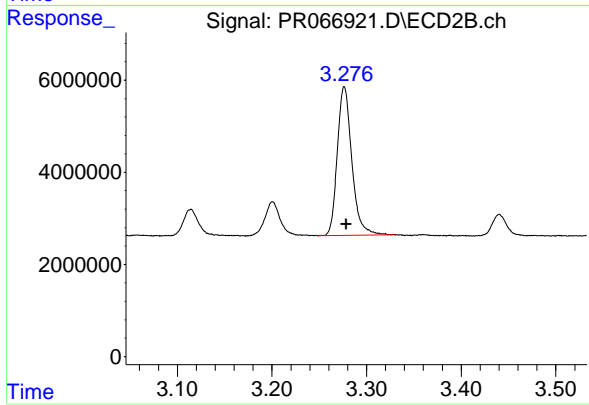
#9 AR-1221-2

R.T.: 3.201 min
 Delta R.T.: -0.002 min
 Response: 8317953
 Conc: 207.80 ng/ml



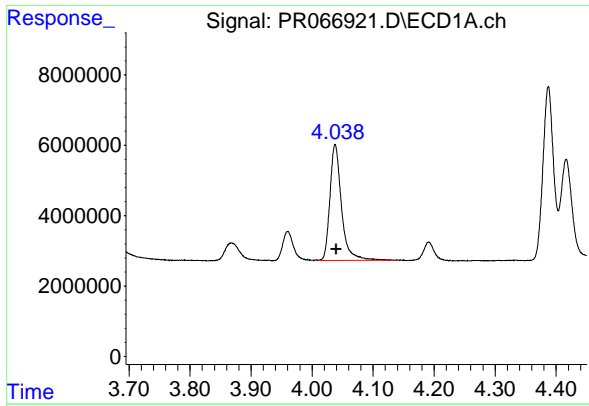
#10 AR-1221-3

R.T.: 4.038 min
 Delta R.T.: -0.002 min
 Response: 43556213
 Conc: 288.70 ng/ml



#10 AR-1221-3

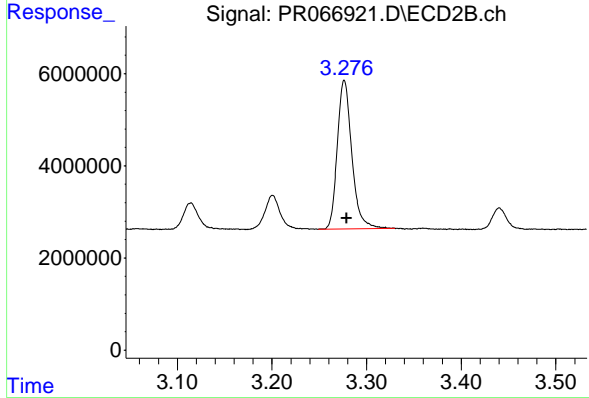
R.T.: 3.277 min
 Delta R.T.: -0.002 min
 Response: 34347646
 Conc: 272.20 ng/ml



#11 AR-1232-1

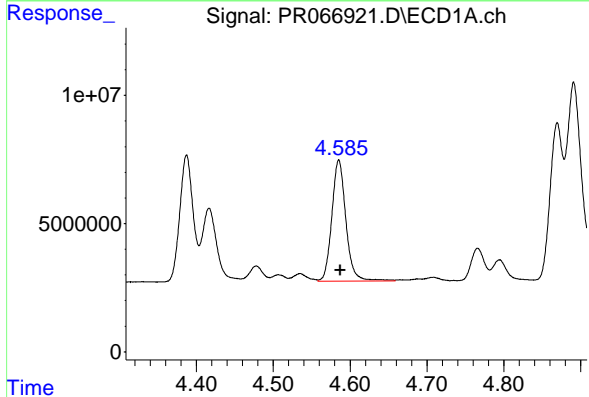
R.T.: 4.038 min
 Delta R.T.: -0.002 min
 Response: 43556213
 Conc: 343.28 ng/ml

Instrument :
 ECD_R
 ClientSampleId :



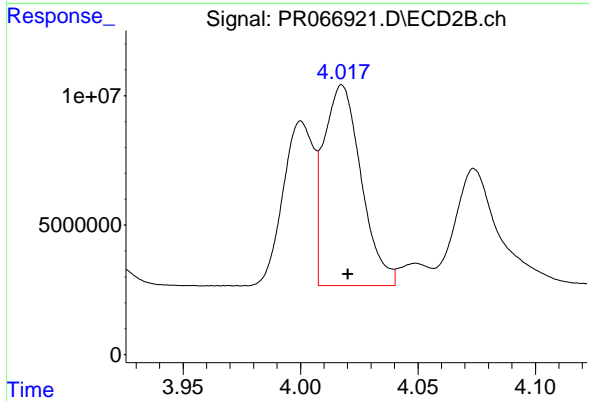
#11 AR-1232-1

R.T.: 3.277 min
 Delta R.T.: -0.002 min
 Response: 34347646
 Conc: 320.94 ng/ml



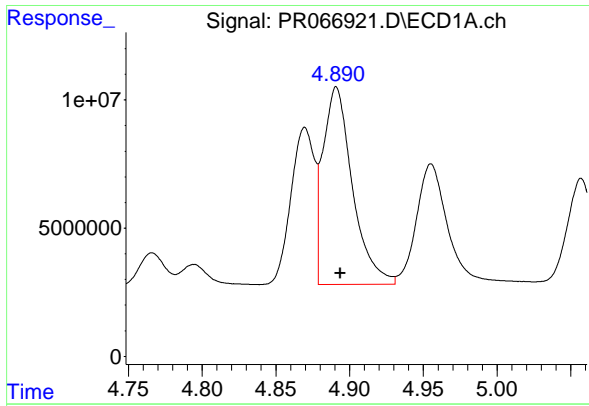
#12 AR-1232-2

R.T.: 4.585 min
 Delta R.T.: -0.002 min
 Response: 60350601
 Conc: 849.41 ng/ml



#12 AR-1232-2

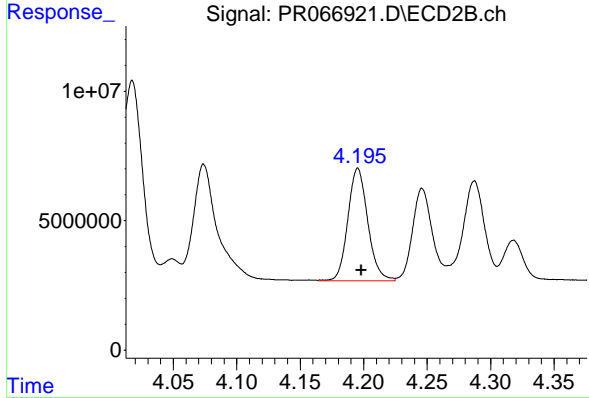
R.T.: 4.018 min
 Delta R.T.: -0.003 min
 Response: 85879412
 Conc: 828.92 ng/ml



#13 AR-1232-3

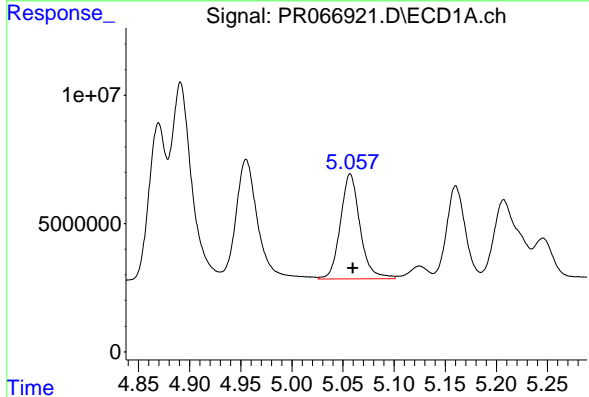
R.T.: 4.891 min
 Delta R.T.: -0.003 min
 Response: 107205231
 Conc: 938.24 ng/ml

Instrument :
 ECD_R
 ClientSampleId :



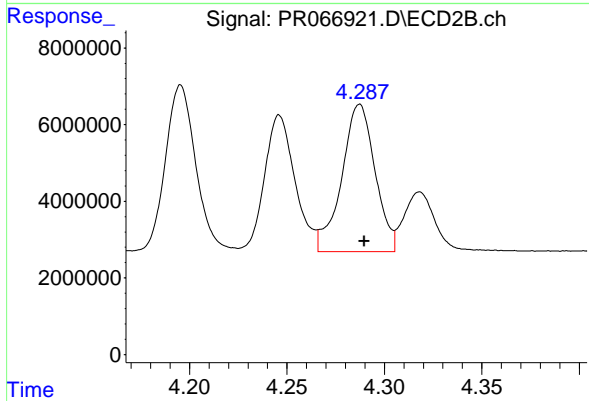
#13 AR-1232-3

R.T.: 4.195 min
 Delta R.T.: -0.003 min
 Response: 47560652
 Conc: 860.07 ng/ml



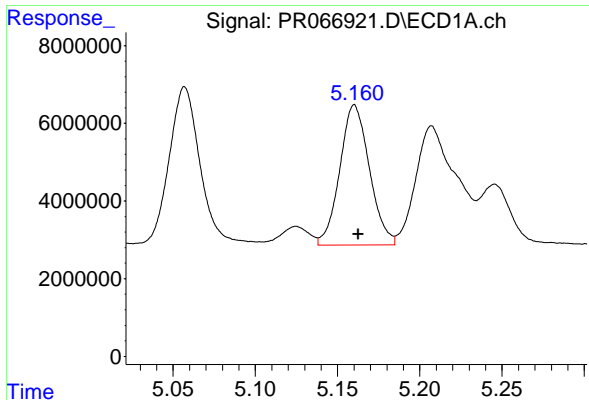
#14 AR-1232-4

R.T.: 5.057 min
 Delta R.T.: -0.003 min
 Response: 54871298
 Conc: 948.14 ng/ml



#14 AR-1232-4

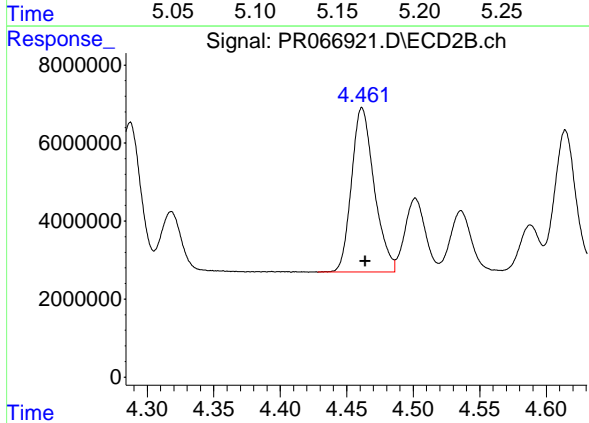
R.T.: 4.287 min
 Delta R.T.: -0.003 min
 Response: 45878585
 Conc: 897.45 ng/ml



#15 AR-1232-5

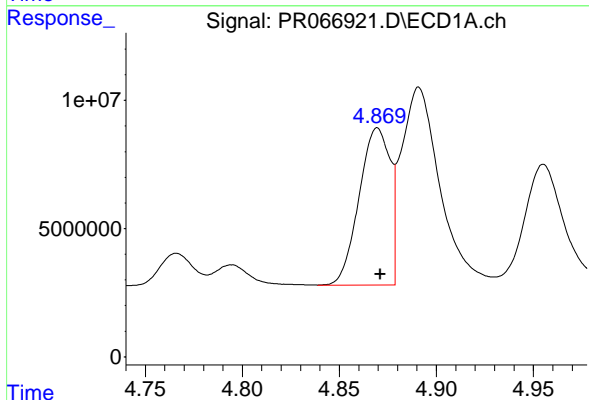
R.T.: 5.160 min
 Delta R.T.: -0.003 min
 Response: 45332326
 Conc: 1018.62 ng/ml

Instrument :
 ECD_R
 ClientSampleId :



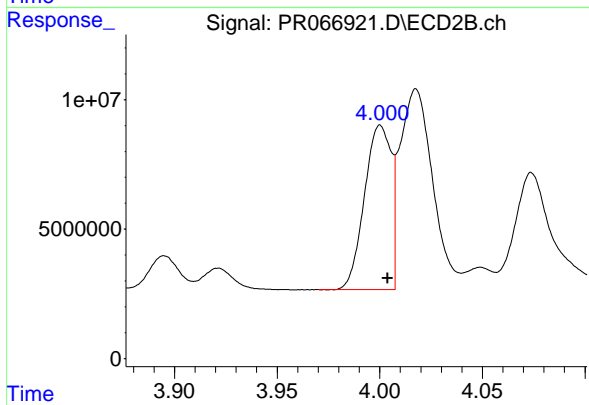
#15 AR-1232-5

R.T.: 4.462 min
 Delta R.T.: -0.002 min
 Response: 50049314
 Conc: 903.62 ng/ml



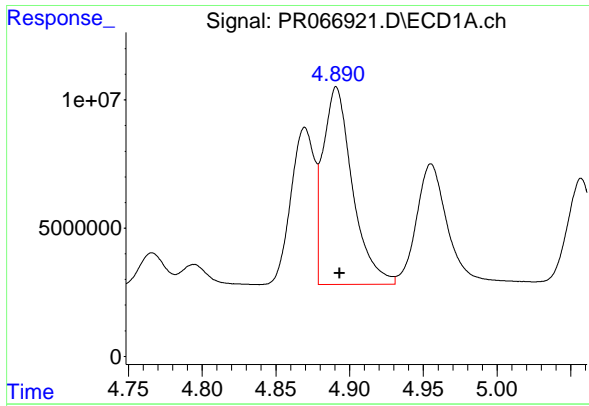
#16 AR-1242-1

R.T.: 4.870 min
 Delta R.T.: -0.001 min
 Response: 67919315
 Conc: 550.64 ng/ml



#16 AR-1242-1

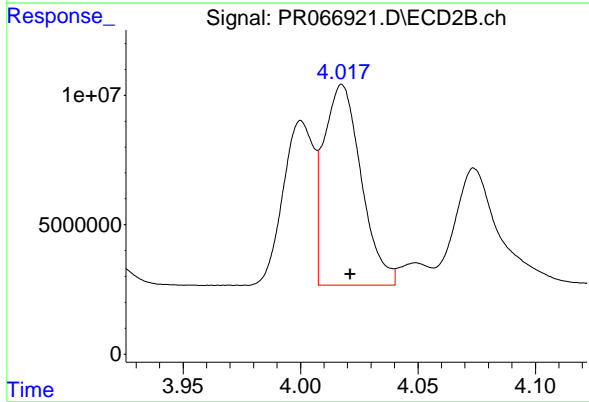
R.T.: 4.000 min
 Delta R.T.: -0.004 min
 Response: 57291758
 Conc: 482.31 ng/ml



#17 AR-1242-2

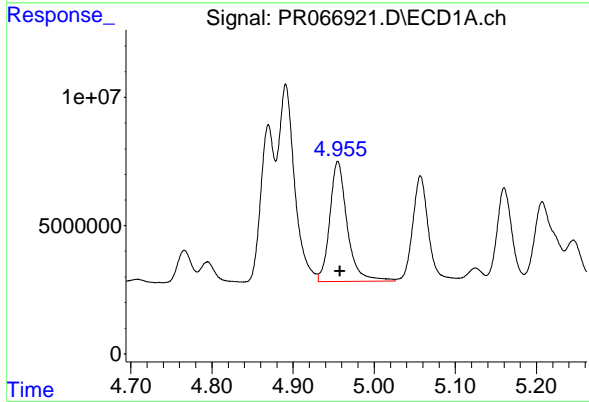
R.T.: 4.891 min
 Delta R.T.: -0.002 min
 Response: 107205231
 Conc: 545.50 ng/ml

Instrument :
 ECD_R
 ClientSampleId :



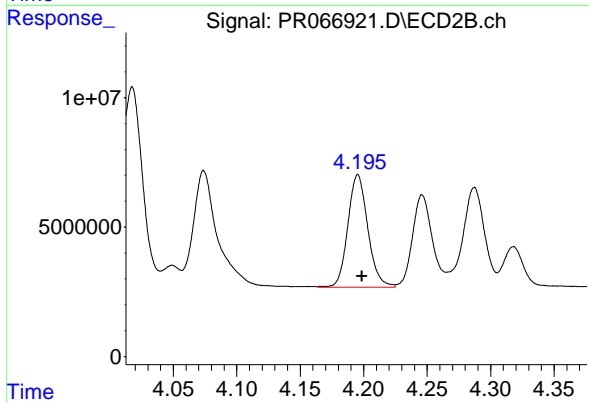
#17 AR-1242-2

R.T.: 4.018 min
 Delta R.T.: -0.004 min
 Response: 85879412
 Conc: 484.18 ng/ml



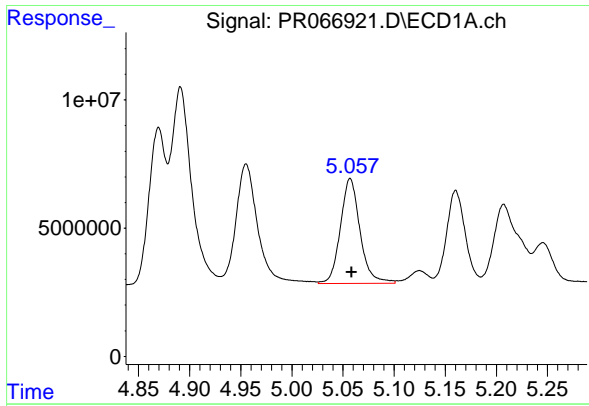
#18 AR-1242-3

R.T.: 4.955 min
 Delta R.T.: -0.002 min
 Response: 70133812
 Conc: 522.85 ng/ml



#18 AR-1242-3

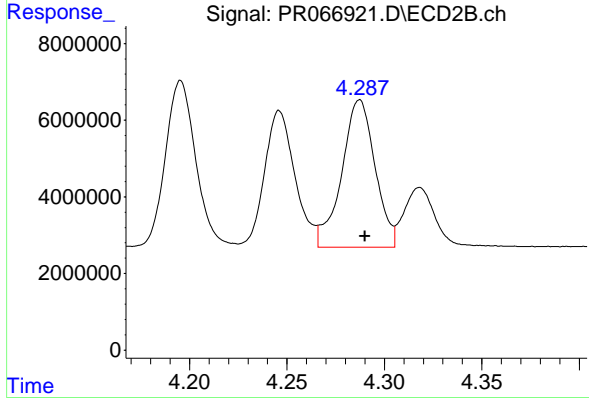
R.T.: 4.195 min
 Delta R.T.: -0.003 min
 Response: 47560652
 Conc: 484.22 ng/ml



#19 AR-1242-4

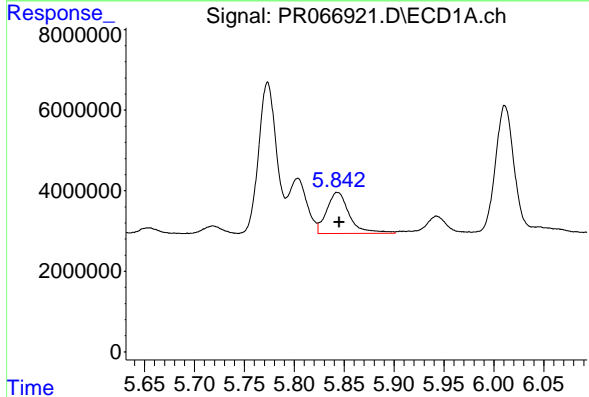
R.T.: 5.057 min
 Delta R.T.: -0.001 min
 Response: 54871298
 Conc: 530.38 ng/ml

Instrument :
 ECD_R
 ClientSampleId :



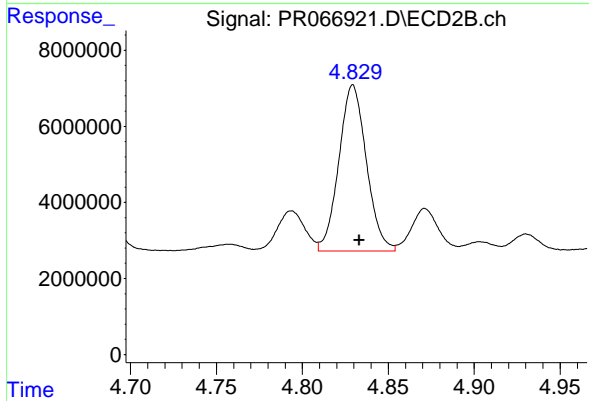
#19 AR-1242-4

R.T.: 4.287 min
 Delta R.T.: -0.003 min
 Response: 45878585
 Conc: 463.19 ng/ml



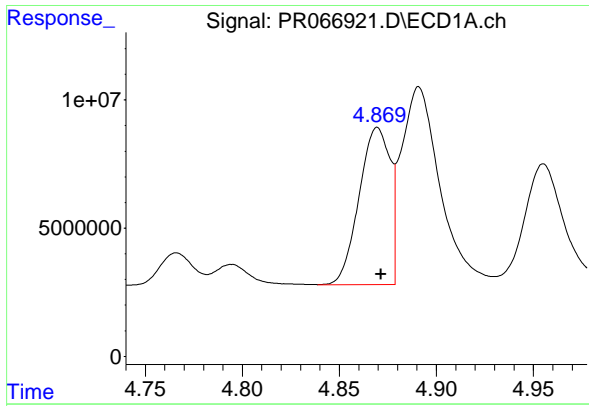
#20 AR-1242-5

R.T.: 5.843 min
 Delta R.T.: -0.002 min
 Response: 16305168
 Conc: 154.98 ng/ml



#20 AR-1242-5

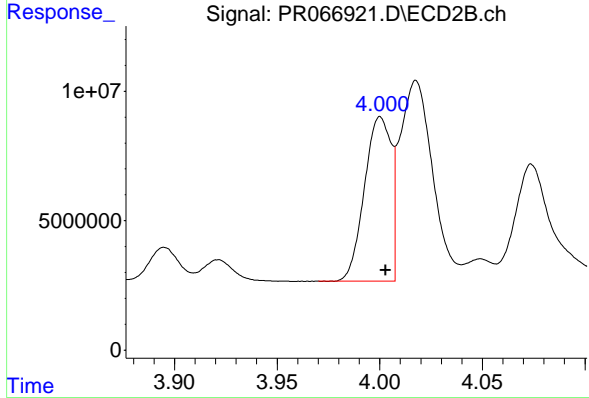
R.T.: 4.829 min
 Delta R.T.: -0.004 min
 Response: 48775195
 Conc: 413.97 ng/ml



#21 AR-1248-1

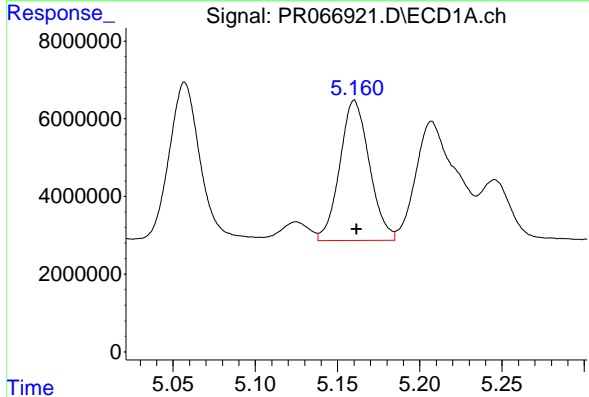
R.T.: 4.870 min
 Delta R.T.: -0.002 min
 Response: 67919315
 Conc: 747.41 ng/ml

Instrument :
 ECD_R
 ClientSampleId :



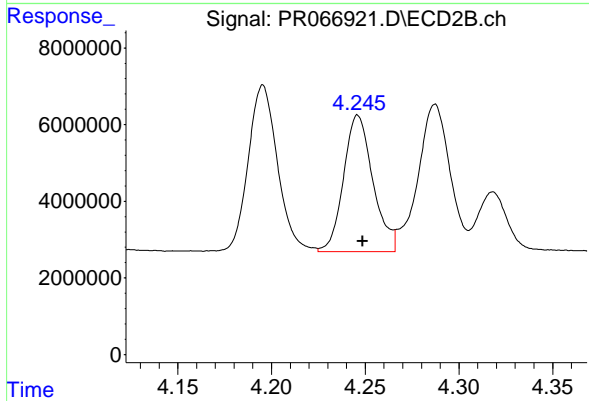
#21 AR-1248-1

R.T.: 4.000 min
 Delta R.T.: -0.003 min
 Response: 57291758
 Conc: 633.58 ng/ml



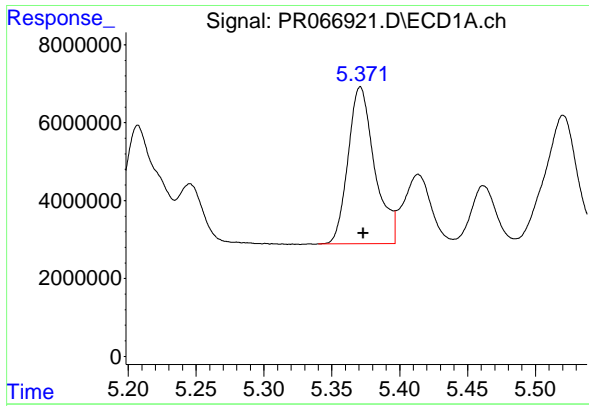
#22 AR-1248-2

R.T.: 5.160 min
 Delta R.T.: -0.002 min
 Response: 45332326
 Conc: 304.53 ng/ml



#22 AR-1248-2

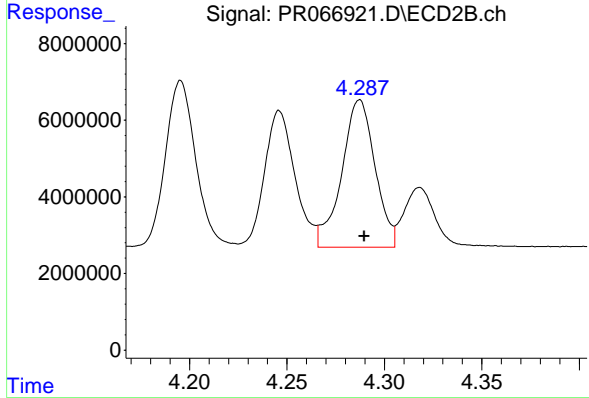
R.T.: 4.246 min
 Delta R.T.: -0.002 min
 Response: 38880163
 Conc: 278.20 ng/ml



#23 AR-1248-3

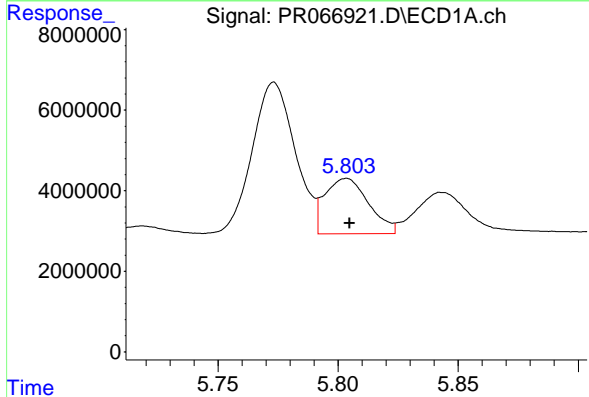
R.T.: 5.371 min
 Delta R.T.: -0.002 min
 Response: 54841423
 Conc: 321.08 ng/ml

Instrument :
 ECD_R
 ClientSampleId :



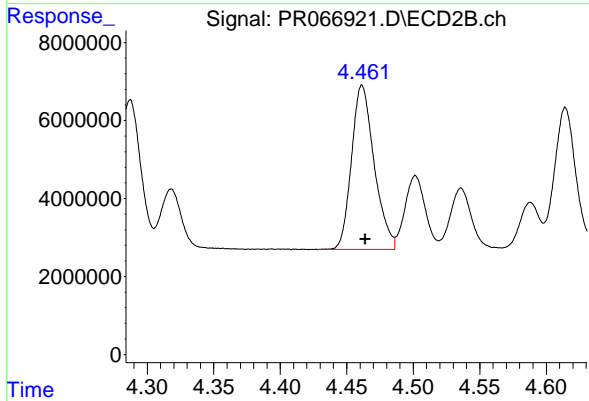
#23 AR-1248-3

R.T.: 4.287 min
 Delta R.T.: -0.002 min
 Response: 45878585
 Conc: 328.07 ng/ml



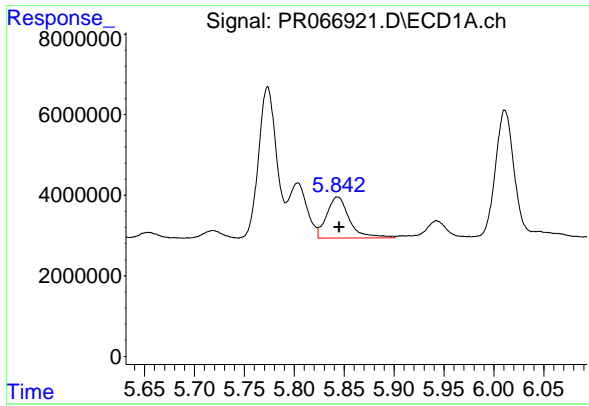
#24 AR-1248-4

R.T.: 5.803 min
 Delta R.T.: -0.001 min
 Response: 17363639
 Conc: 110.11 ng/ml



#24 AR-1248-4

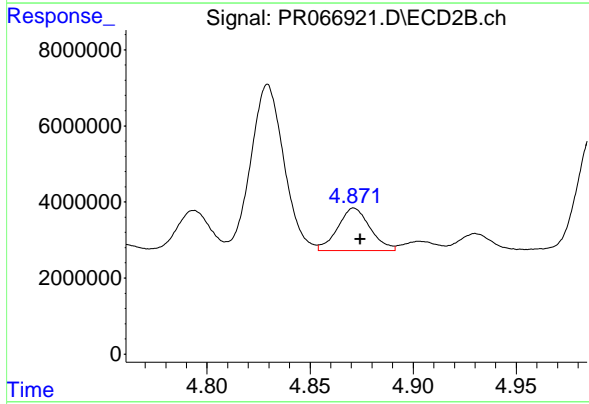
R.T.: 4.462 min
 Delta R.T.: -0.003 min
 Response: 50049314
 Conc: 298.72 ng/ml



#25 AR-1248-5

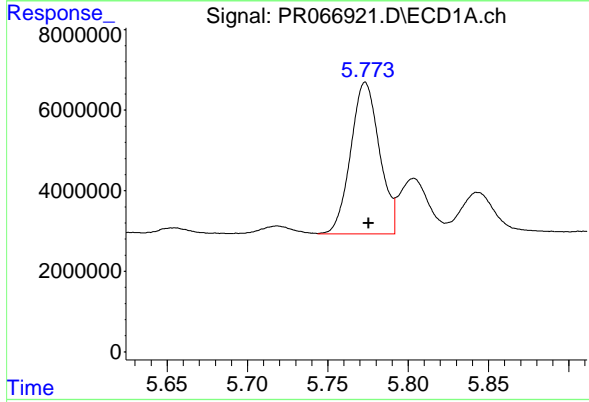
R.T.: 5.843 min
 Delta R.T.: -0.002 min
 Response: 16305168
 Conc: 91.56 ng/ml

Instrument :
 ECD_R
 ClientSampleId :



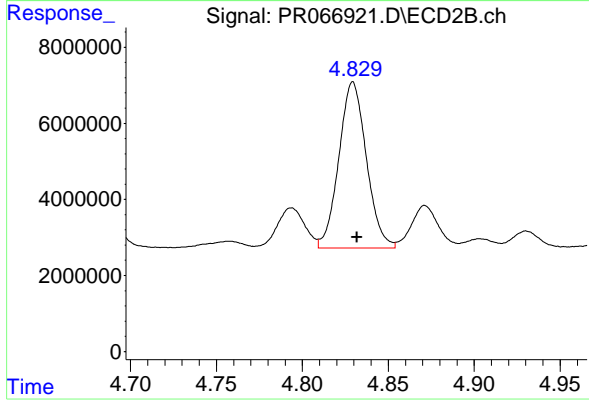
#25 AR-1248-5

R.T.: 4.871 min
 Delta R.T.: -0.003 min
 Response: 12221143
 Conc: 79.10 ng/ml



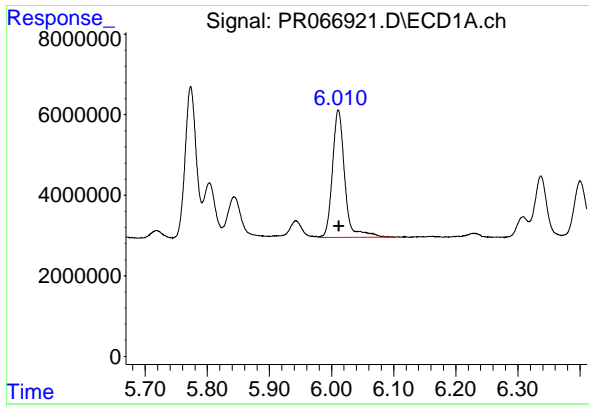
#26 AR-1254-1

R.T.: 5.773 min
 Delta R.T.: -0.002 min
 Response: 46938064
 Conc: 246.23 ng/ml



#26 AR-1254-1

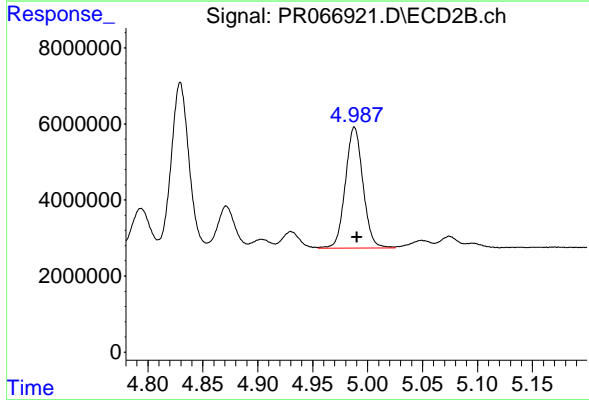
R.T.: 4.829 min
 Delta R.T.: -0.002 min
 Response: 48775195
 Conc: 199.68 ng/ml



#27 AR-1254-2

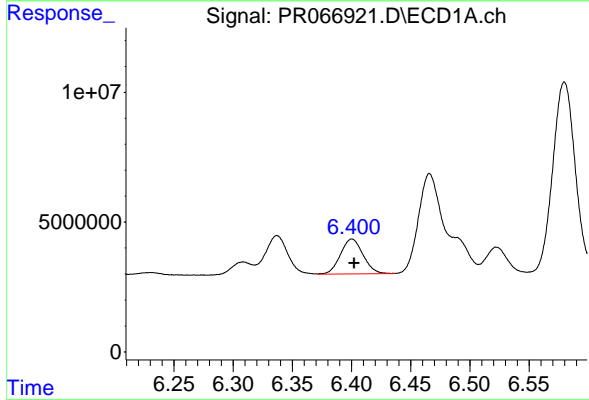
R.T.: 6.011 min
 Delta R.T.: 0.000 min
 Response: 43680997
 Conc: 155.63 ng/ml

Instrument :
 ECD_R
 ClientSampleId :



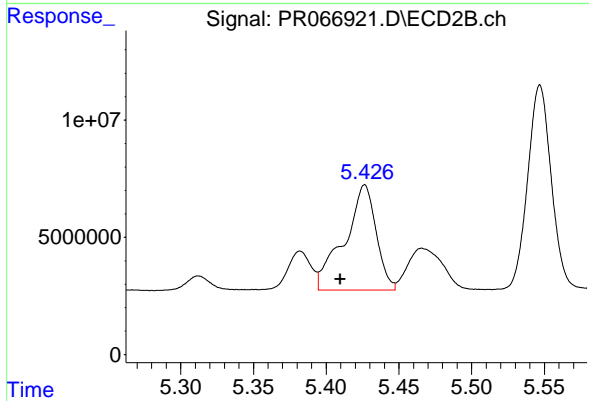
#27 AR-1254-2

R.T.: 4.988 min
 Delta R.T.: -0.002 min
 Response: 35544653
 Conc: 164.20 ng/ml



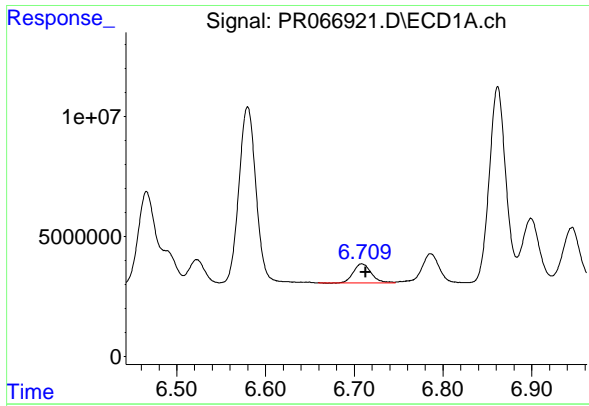
#28 AR-1254-3

R.T.: 6.400 min
 Delta R.T.: -0.002 min
 Response: 17736928
 Conc: 66.17 ng/ml



#28 AR-1254-3

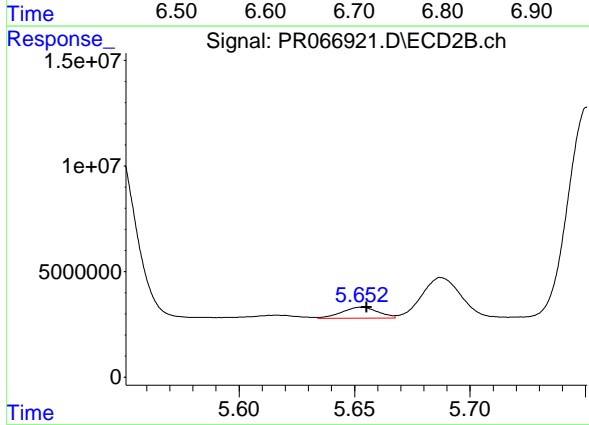
R.T.: 5.426 min
 Delta R.T.: 0.017 min
 Response: 68251011
 Conc: 200.67 ng/ml



#29 AR-1254-4

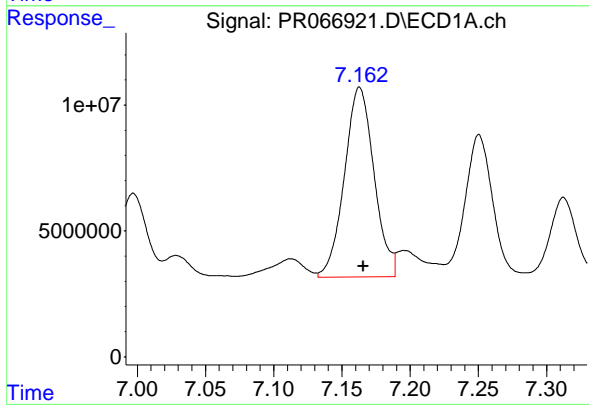
R.T.: 6.708 min
 Delta R.T.: -0.004 min
 Response: 10925812
 Conc: 67.82 ng/ml

Instrument : ECD_R
 ClientSampleId :



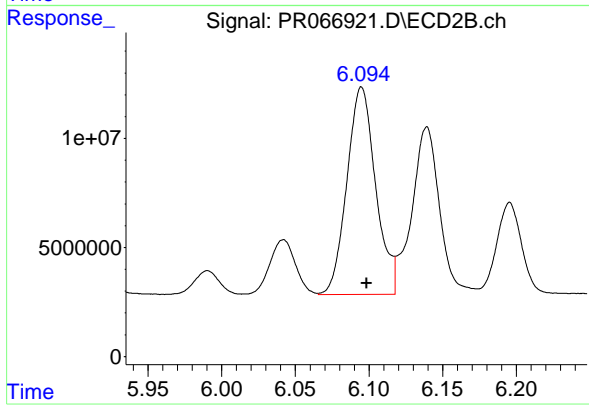
#29 AR-1254-4

R.T.: 5.653 min
 Delta R.T.: -0.003 min
 Response: 5645130
 Conc: 28.77 ng/ml



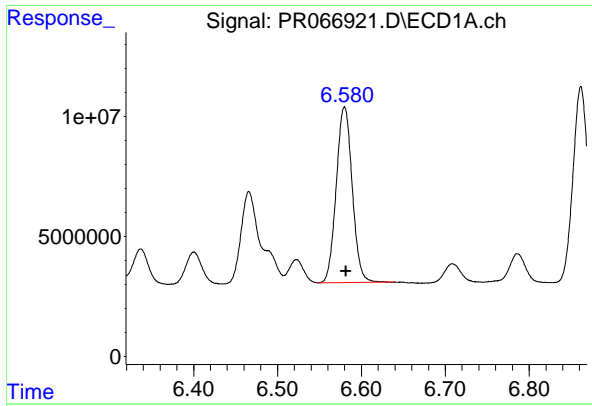
#30 AR-1254-5

R.T.: 7.163 min
 Delta R.T.: -0.003 min
 Response: 113896320
 Conc: 593.19 ng/ml



#30 AR-1254-5

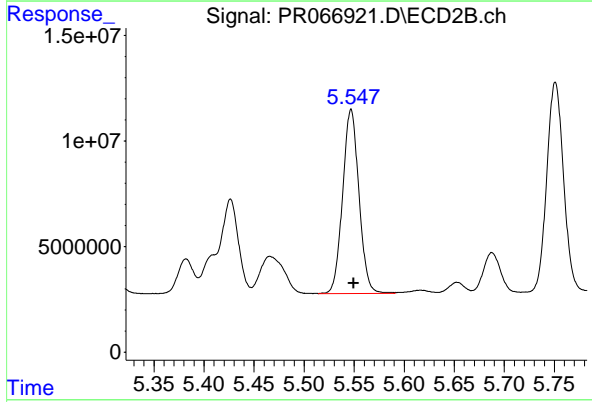
R.T.: 6.095 min
 Delta R.T.: -0.003 min
 Response: 129082950
 Conc: 419.14 ng/ml



#31 AR-1260-1

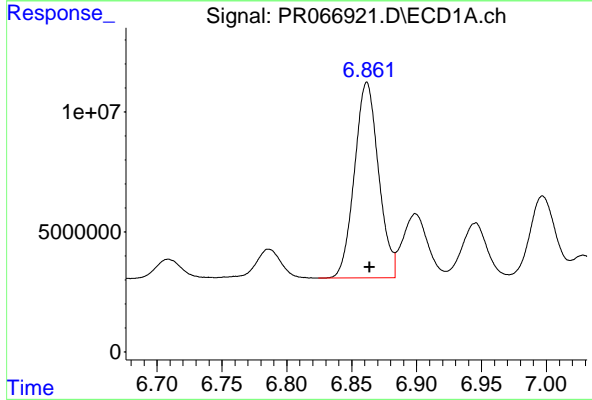
R.T.: 6.580 min
Delta R.T.: -0.002 min
Response: 97163284
Conc: 398.47 ng/ml

Instrument :
ECD_R
ClientSampleId :



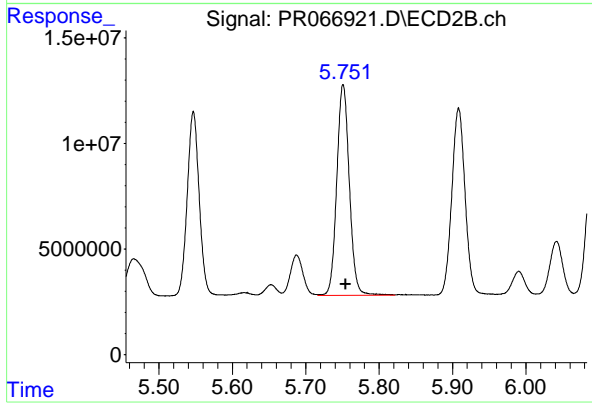
#31 AR-1260-1

R.T.: 5.547 min
Delta R.T.: -0.003 min
Response: 99168447
Conc: 380.64 ng/ml



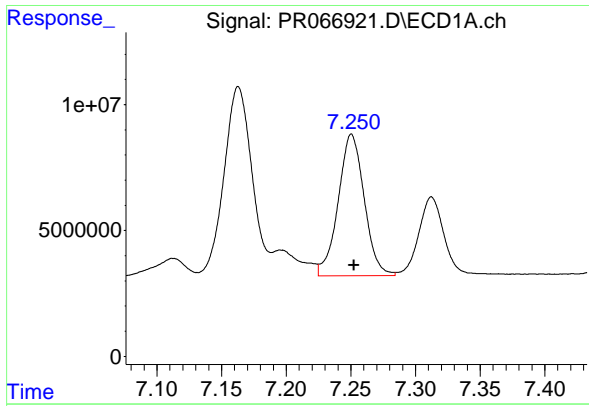
#32 AR-1260-2

R.T.: 6.862 min
Delta R.T.: -0.002 min
Response: 105340420
Conc: 406.89 ng/ml



#32 AR-1260-2

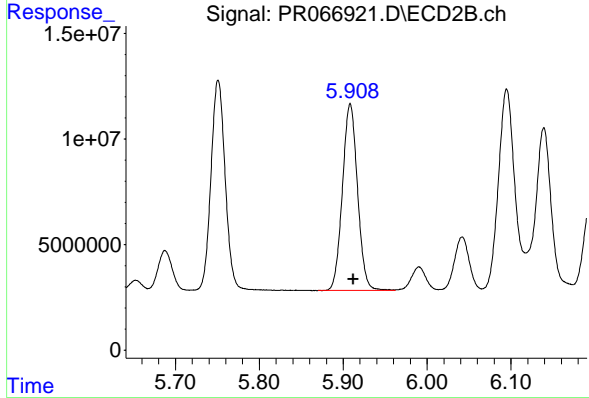
R.T.: 5.751 min
Delta R.T.: -0.003 min
Response: 118390284
Conc: 386.12 ng/ml



#33 AR-1260-3

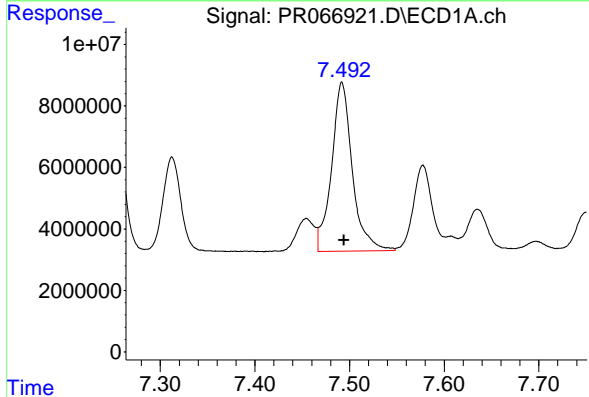
R.T.: 7.250 min
 Delta R.T.: -0.002 min
 Response: 78906001
 Conc: 397.11 ng/ml

Instrument :
 ECD_R
 ClientSampleId :



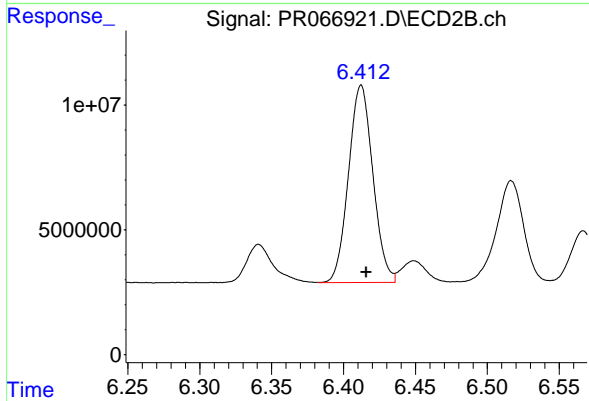
#33 AR-1260-3

R.T.: 5.908 min
 Delta R.T.: -0.003 min
 Response: 110518568
 Conc: 377.02 ng/ml



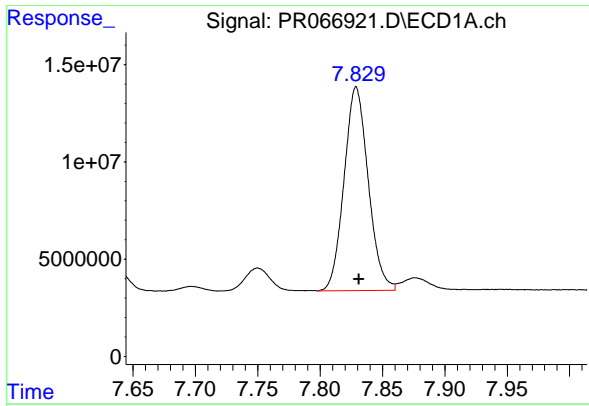
#34 AR-1260-4

R.T.: 7.492 min
 Delta R.T.: -0.002 min
 Response: 83790305
 Conc: 401.13 ng/ml



#34 AR-1260-4

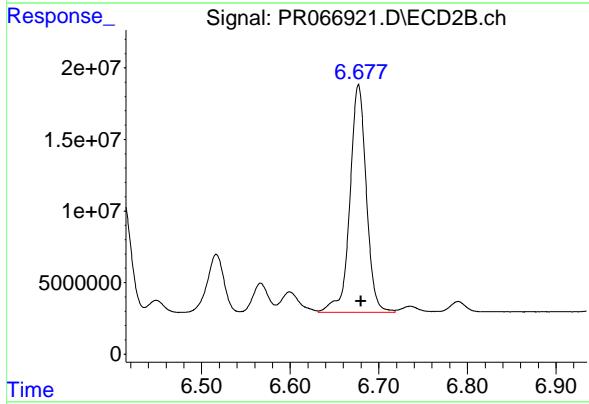
R.T.: 6.412 min
 Delta R.T.: -0.004 min
 Response: 93738371
 Conc: 374.90 ng/ml



#35 AR-1260-5

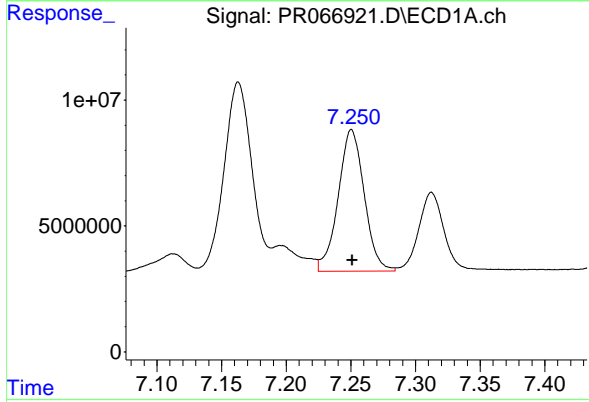
R.T.: 7.829 min
 Delta R.T.: -0.002 min
 Response: 141190783
 Conc: 412.49 ng/ml

Instrument :
 ECD_R
 ClientSampleId :



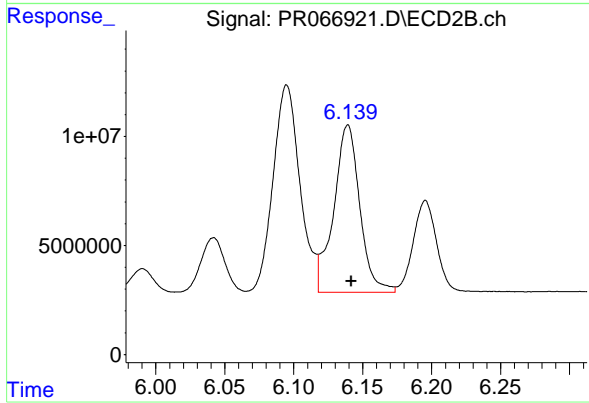
#35 AR-1260-5

R.T.: 6.677 min
 Delta R.T.: -0.003 min
 Response: 205146217
 Conc: 375.80 ng/ml



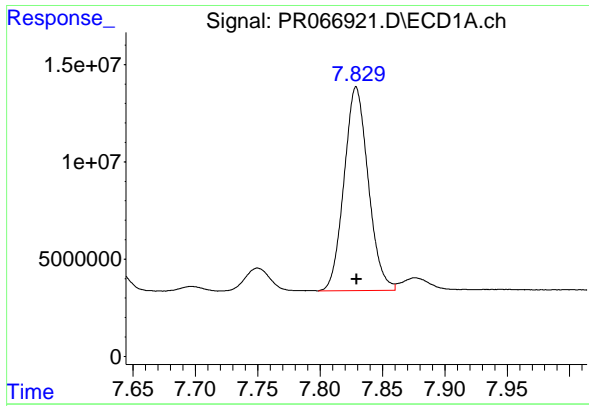
#36 AR-1262-1

R.T.: 7.250 min
 Delta R.T.: 0.000 min
 Response: 78906001
 Conc: 304.92 ng/ml



#36 AR-1262-1

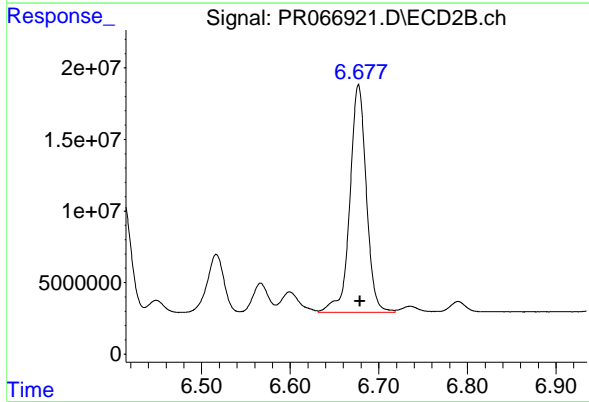
R.T.: 6.139 min
 Delta R.T.: -0.003 min
 Response: 100979989
 Conc: 304.65 ng/ml



#37 AR-1262-2

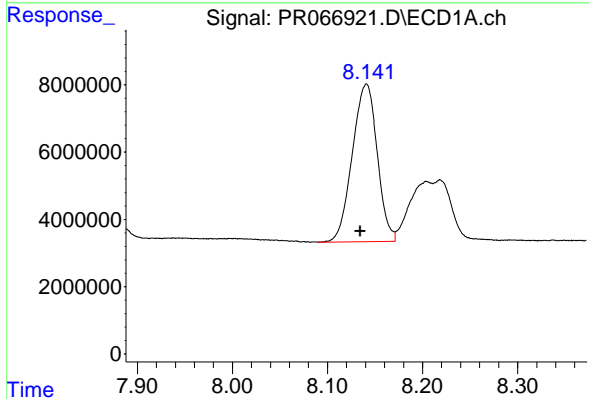
R.T.: 7.829 min
 Delta R.T.: 0.000 min
 Response: 141190783
 Conc: 407.09 ng/ml

Instrument :
 ECD_R
 ClientSampleId :



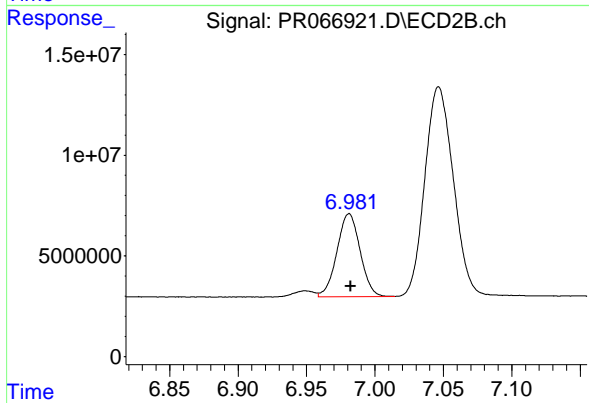
#37 AR-1262-2

R.T.: 6.677 min
 Delta R.T.: -0.002 min
 Response: 205146217
 Conc: 368.60 ng/ml



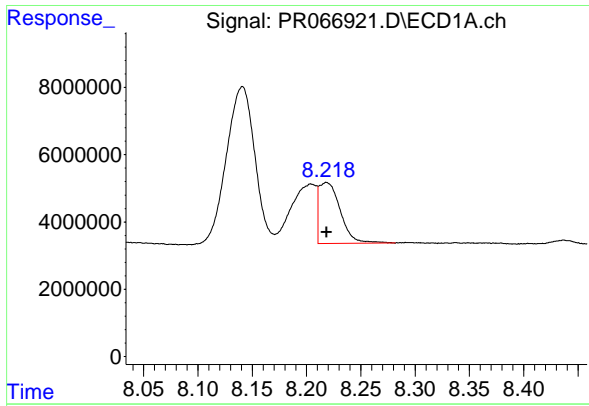
#38 AR-1262-3

R.T.: 8.141 min
 Delta R.T.: 0.006 min
 Response: 85437800
 Conc: 374.60 ng/ml



#38 AR-1262-3

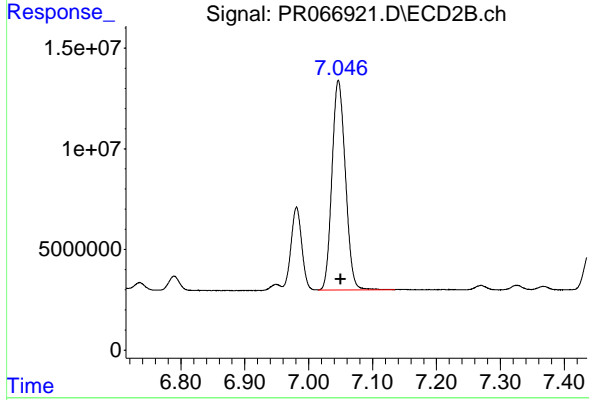
R.T.: 6.981 min
 Delta R.T.: -0.001 min
 Response: 48780051
 Conc: 204.38 ng/ml



#39 AR-1262-4

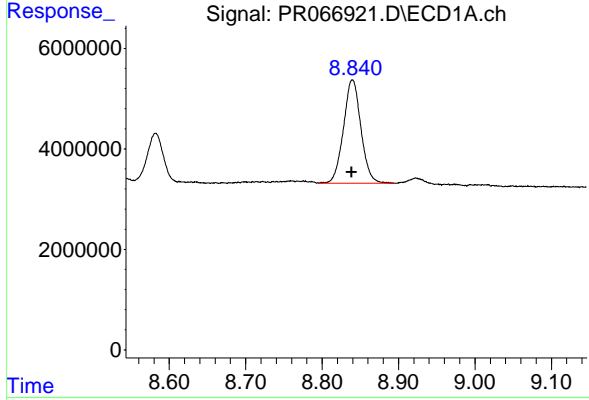
R.T.: 8.218 min
 Delta R.T.: 0.000 min
 Response: 24841332
 Conc: 137.63 ng/ml

Instrument :
 ECD_R
 ClientSampleId :



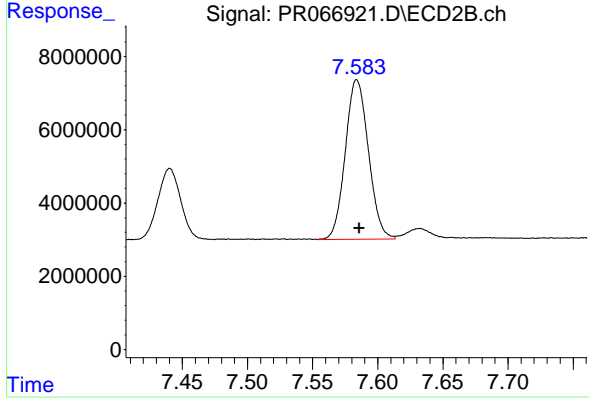
#39 AR-1262-4

R.T.: 7.047 min
 Delta R.T.: -0.004 min
 Response: 151817320
 Conc: 355.78 ng/ml



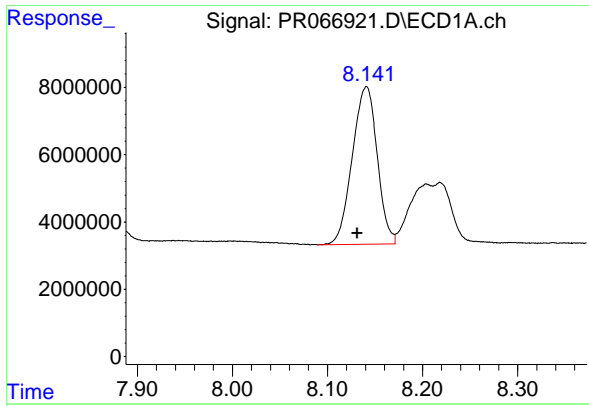
#40 AR-1262-5

R.T.: 8.840 min
 Delta R.T.: 0.001 min
 Response: 32710575
 Conc: 319.33 ng/ml



#40 AR-1262-5

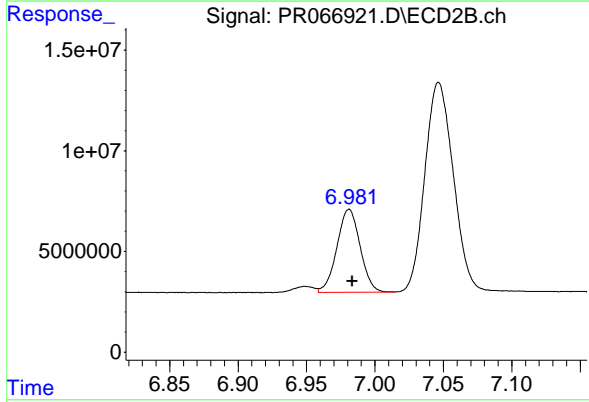
R.T.: 7.584 min
 Delta R.T.: -0.002 min
 Response: 53808948
 Conc: 274.71 ng/ml



#41 AR-1268-1

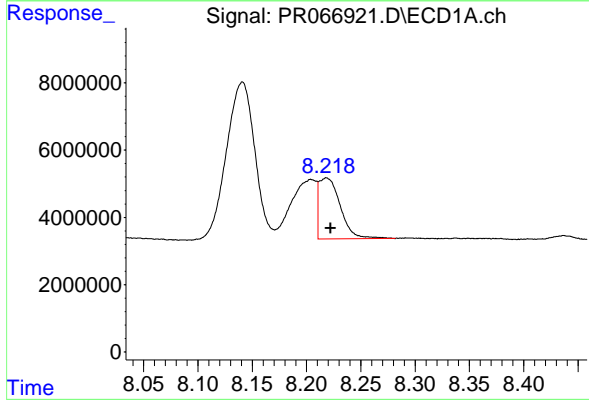
R.T.: 8.141 min
 Delta R.T.: 0.009 min
 Response: 85437800
 Conc: 205.95 ng/ml

Instrument :
 ECD_R
 ClientSampleId :



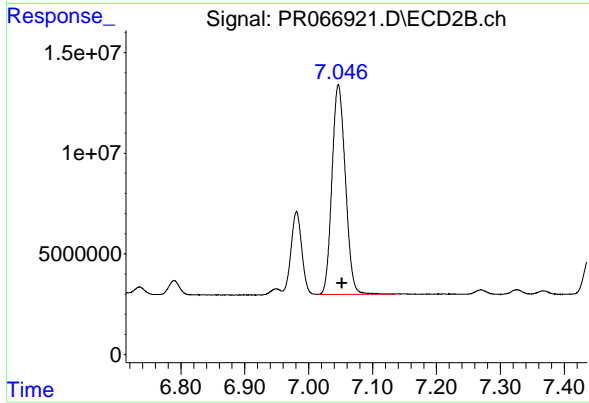
#41 AR-1268-1

R.T.: 6.981 min
 Delta R.T.: -0.002 min
 Response: 48780051
 Conc: 73.31 ng/ml



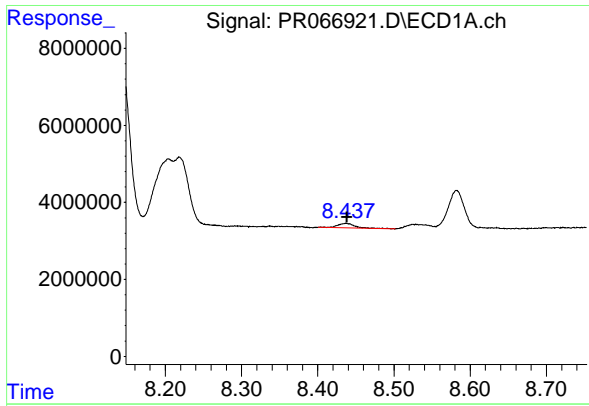
#42 AR-1268-2

R.T.: 8.218 min
 Delta R.T.: -0.004 min
 Response: 24841332
 Conc: 67.05 ng/ml



#42 AR-1268-2

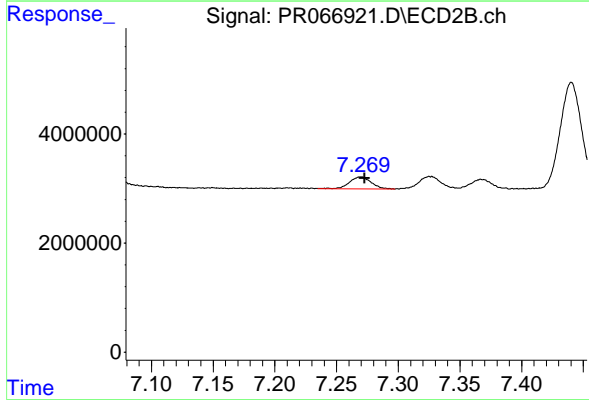
R.T.: 7.047 min
 Delta R.T.: -0.006 min
 Response: 151817320
 Conc: 249.10 ng/ml



#43 AR-1268-3

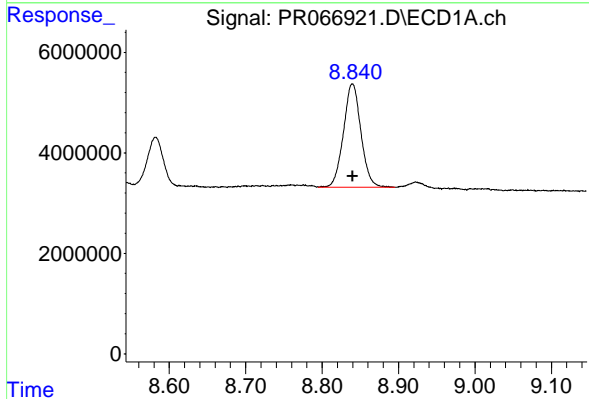
R.T.: 8.437 min
 Delta R.T.: -0.001 min
 Response: 1732770
 Conc: 5.33 ng/ml

Instrument :
 ECD_R
 ClientSampleId :



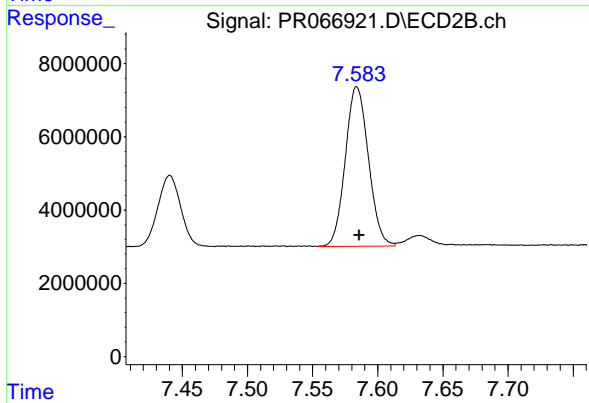
#43 AR-1268-3

R.T.: 7.270 min
 Delta R.T.: -0.003 min
 Response: 2740112
 Conc: 5.12 ng/ml



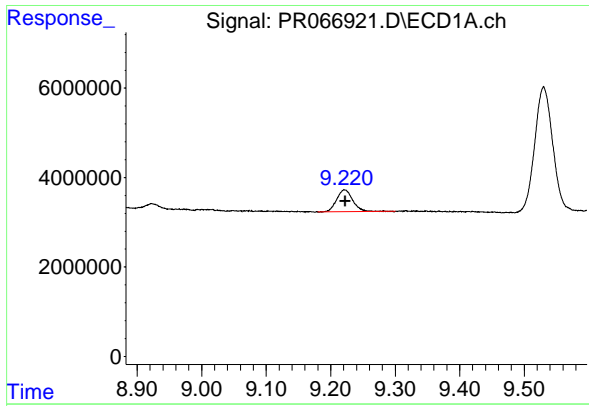
#44 AR-1268-4

R.T.: 8.840 min
 Delta R.T.: 0.000 min
 Response: 32710575
 Conc: 288.03 ng/ml



#44 AR-1268-4

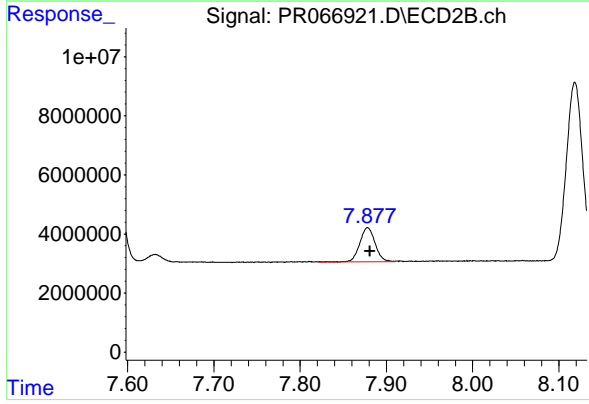
R.T.: 7.584 min
 Delta R.T.: -0.002 min
 Response: 53808948
 Conc: 244.13 ng/ml



#45 AR-1268-5

R.T.: 9.222 min
Delta R.T.: 0.000 min
Response: 8465560
Conc: 10.05 ng/ml

Instrument :
ECD_R
ClientSampleId :



#45 AR-1268-5

R.T.: 7.878 min
Delta R.T.: -0.003 min
Response: 14245424
Conc: 9.55 ng/ml