

Data Path : Z:\pestpcbsrv\HPCHEM1\ECD_R\Data\PR052622\
 Data File : PR054385.D
 Signal(s) : Signal #1: ECD1A.ch Signal #2: ECD2B.ch
 Acq On : 26 May 2022 09:36
 Operator : AJ\MA
 Sample : I.BLK
 Misc :
 ALS Vial : 2 Sample Multiplier: 1

Instrument :
 ECD_R
 ClientSampleId :
 I.BLK

Integration File signal 1: autoint1.e
 Integration File signal 2: autoint2.e
 Quant Time: May 27 02:15:53 2022
 Quant Method : Z:\pestpcbsrv\HPCHEM1\ECD_R\Method\PR052522.M
 Quant Title : GC EXTRACTABLES
 QLast Update : Wed May 25 15:27:54 2022
 Response via : Initial Calibration
 Integrator: ChemStation

Volume Inj. : 2 µl
 Signal #1 Phase : ZB-MR1 Signal #2 Phase: ZB-MR2
 Signal #1 Info : 30Mx0.32mmx 0.50µ Signal #2 Info : 30M x 0.32mm x 0.25µm

Compound	RT#1	RT#2	Resp#1	Resp#2	ng/ml	ng/ml

System Monitoring Compounds						
1) SA Tetrachlo...	3.649	2.921	90785335	47411432	24.613	25.099
2) SA Decachlor...	9.530	8.160	33663831	34883269	22.034	24.223

Target Compounds

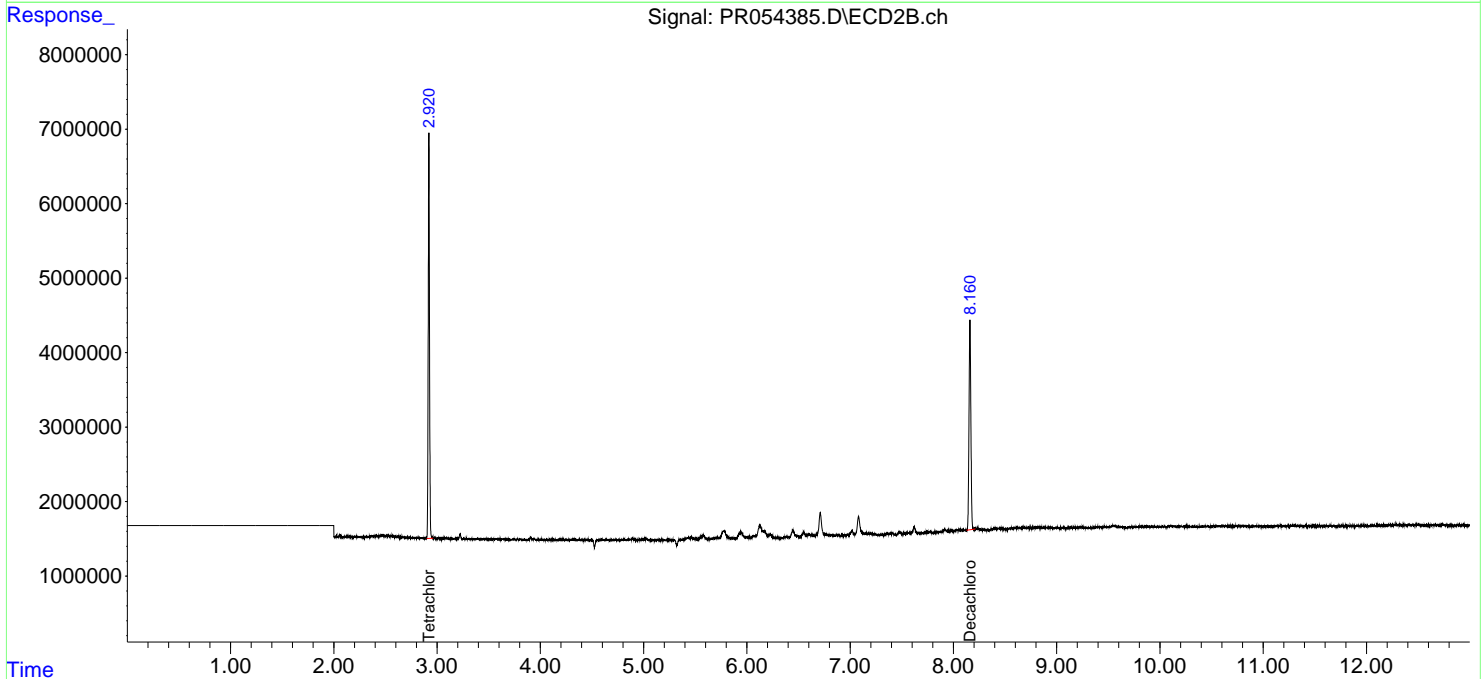
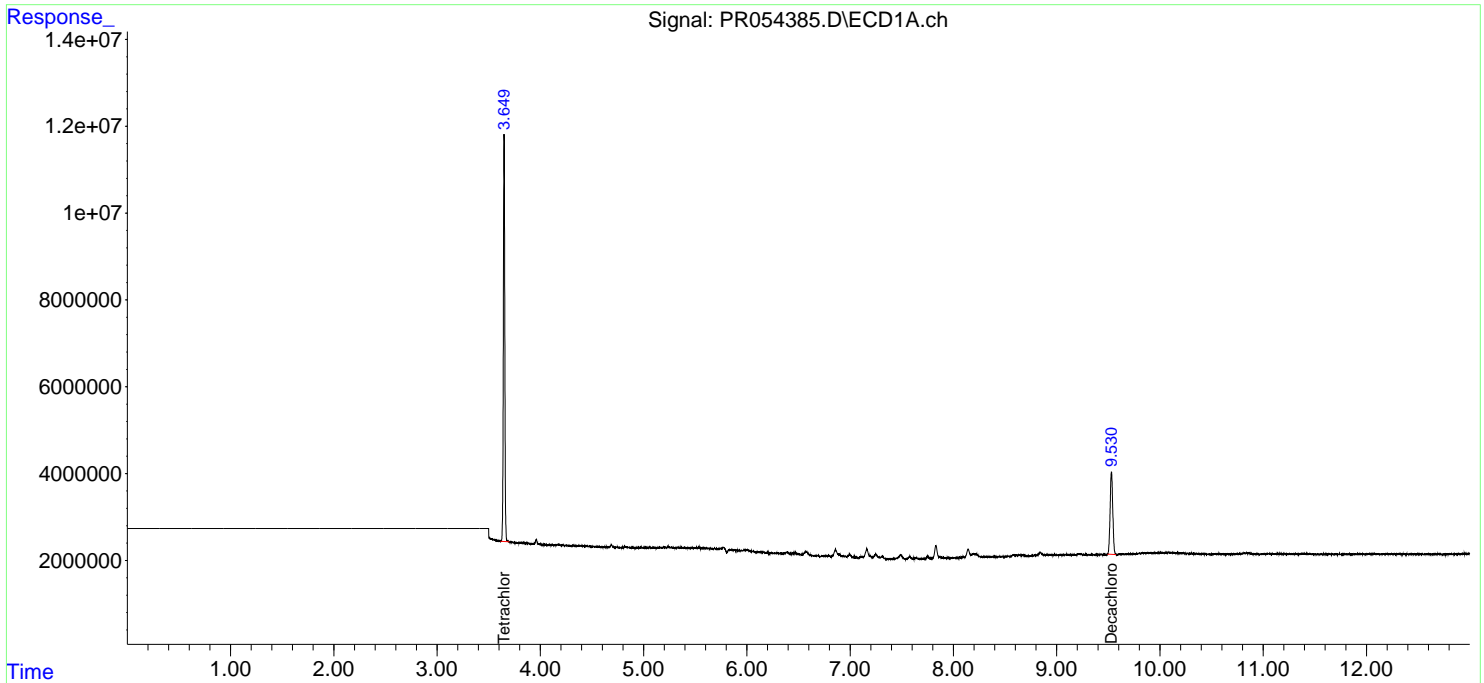
(f)=RT Delta > 1/2 Window (#)=Amounts differ by > 25% (m)=manual int.

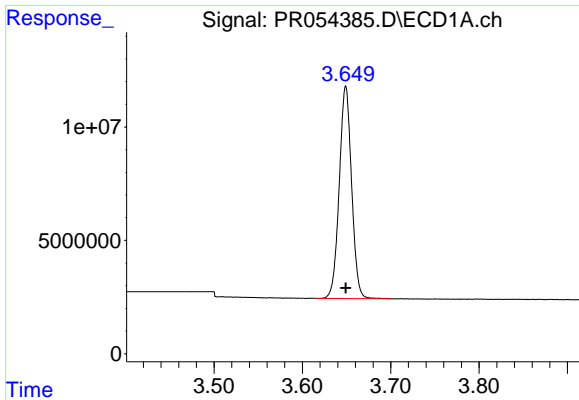
Data Path : Z:\pestpcbsrv\HPCHEM1\ECD_R\Data\PR052622\
 Data File : PR054385.D
 Signal(s) : Signal #1: ECD1A.ch Signal #2: ECD2B.ch
 Acq On : 26 May 2022 09:36
 Operator : AJ\MA
 Sample : I.BLK
 Misc :
 ALS Vial : 2 Sample Multiplier: 1

Instrument :
 ECD_R
 ClientSampleId :
 I.BLK

Integration File signal 1: autoint1.e
 Integration File signal 2: autoint2.e
 Quant Time: May 27 02:15:53 2022
 Quant Method : Z:\pestpcbsrv\HPCHEM1\ECD_R\Method\PR052522.M
 Quant Title : GC EXTRACTABLES
 QLast Update : Wed May 25 15:27:54 2022
 Response via : Initial Calibration
 Integrator: ChemStation

Volume Inj. : 2 µl
 Signal #1 Phase : ZB-MR1 Signal #2 Phase: ZB-MR2
 Signal #1 Info : 30Mx0.32mmx 0.50µ Signal #2 Info : 30M x 0.32mm x 0.25µm

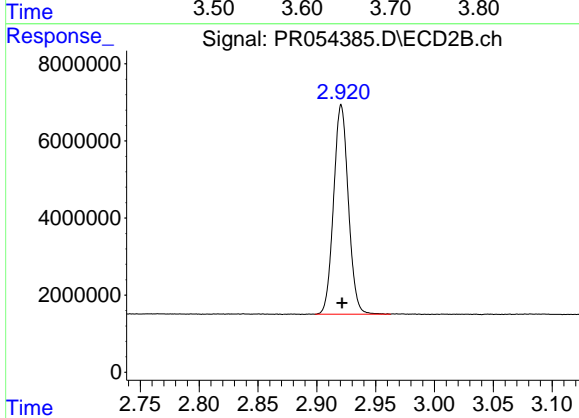




#1 Tetrachloro-m-xylene

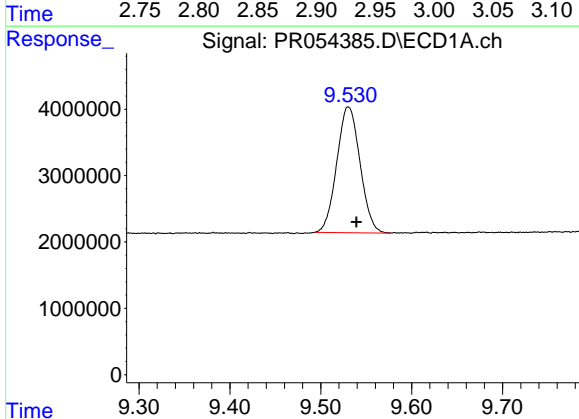
R.T.: 3.649 min
 Delta R.T.: 0.000 min
 Response: 90785335
 Conc: 24.61 ng/ml

Instrument :
 ECD_R
 ClientSampleId :
 I.BLK



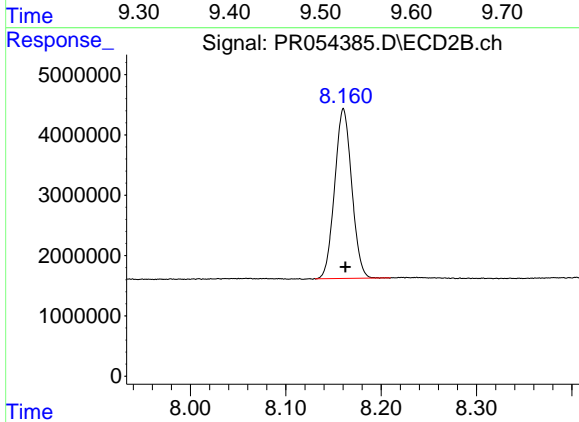
#1 Tetrachloro-m-xylene

R.T.: 2.921 min
 Delta R.T.: 0.000 min
 Response: 47411432
 Conc: 25.10 ng/ml



#2 Decachlorobiphenyl

R.T.: 9.530 min
 Delta R.T.: -0.009 min
 Response: 33663831
 Conc: 22.03 ng/ml



#2 Decachlorobiphenyl

R.T.: 8.160 min
 Delta R.T.: -0.002 min
 Response: 34883269
 Conc: 24.22 ng/ml