

Data Path : Z:\pestpcbsrv\HPCHEM1\ECD\_R\Data\PR052624\  
 Data File : PR067025.D  
 Signal(s) : Signal #1: ECD1A.ch Signal #2: ECD2B.ch  
 Acq On : 26 May 2024 16:28  
 Operator : AJ\MA  
 Sample : P2590-17  
 Misc :  
 ALS Vial : 26 Sample Multiplier: 1

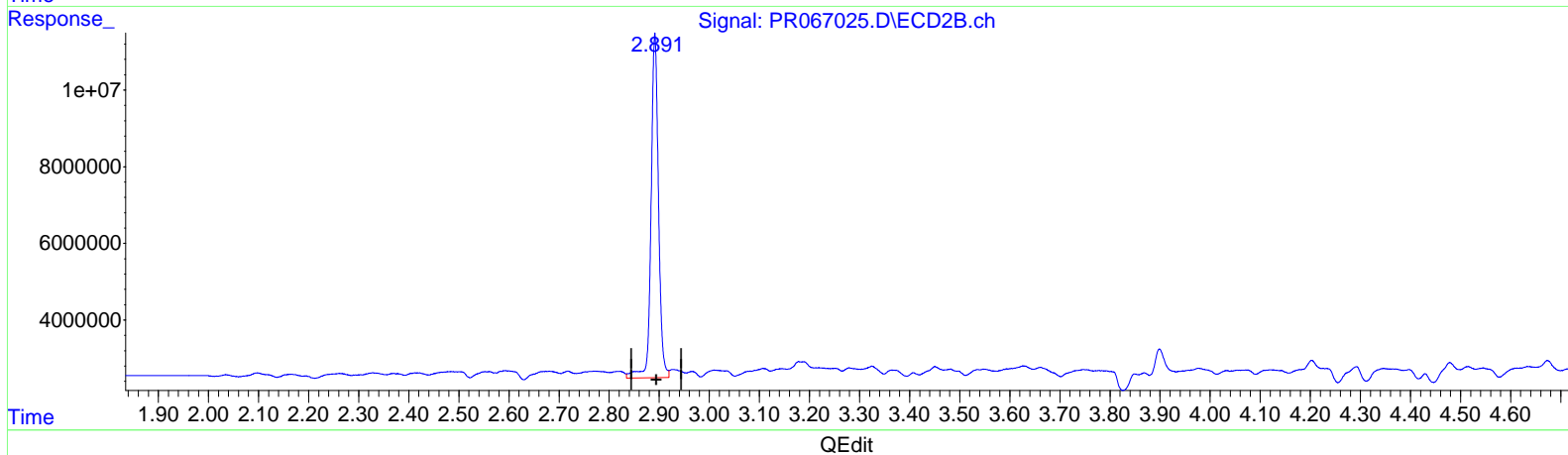
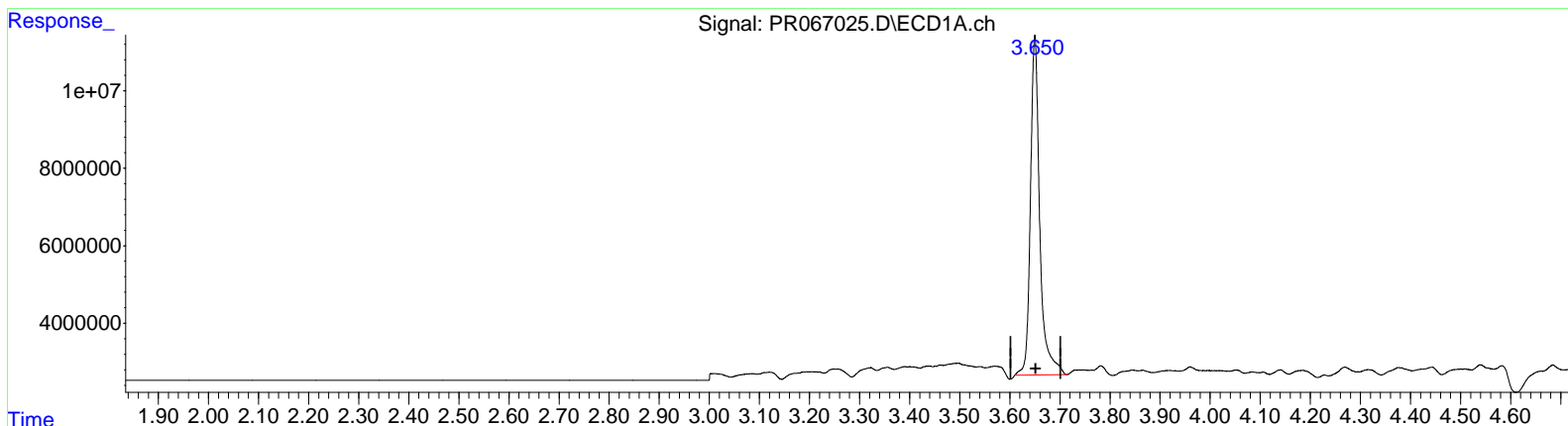
Instrument :  
 ECD\_R  
 ClientSampleId :  
 BHBM1

Manual Integrations APPROVED

Reviewed By :Yogesh Patel 05/28/2024  
 Supervised By :Ankita Jodhani 05/28/2024

Integration File signal 1: autoint1.e  
 Integration File signal 2: autoint2.e  
 Quant Time: May 27 02:27:17 2024  
 Quant Method : Z:\pestpcbsrv\HPCHEM1\ECD\_R\Method\PR052124CLP.M  
 Quant Title : GC EXTRACTABLES  
 QLast Update : Wed May 22 04:28:16 2024  
 Response via : Initial Calibration  
 Integrator: ChemStation

Volume Inj. : 1 µl  
 Signal #1 Phase : ZB MR1 Signal #2 Phase: ZB MR2  
 Signal #1 Info : 30Mx0.32mmx 0.5µm Signal #2 Info : 30M x 0.32mm x 0.25µm



(1) Tetrachloro-m-xylene (SA)  
 3.650min 18.444 ng/ml  
 response 113148050

(1) Tetrachloro-m-xylene #2 (SA)  
 2.891min 19.978 ng/ml  
 response 93018301

Data Path : Z:\pestpcbsrv\HPCHEM1\ECD\_R\Data\PR052624\  
 Data File : PR067025.D  
 Signal(s) : Signal #1: ECD1A.ch Signal #2: ECD2B.ch  
 Acq On : 26 May 2024 16:28  
 Operator : AJ\MA  
 Sample : P2590-17  
 Misc :  
 ALS Vial : 26 Sample Multiplier: 1

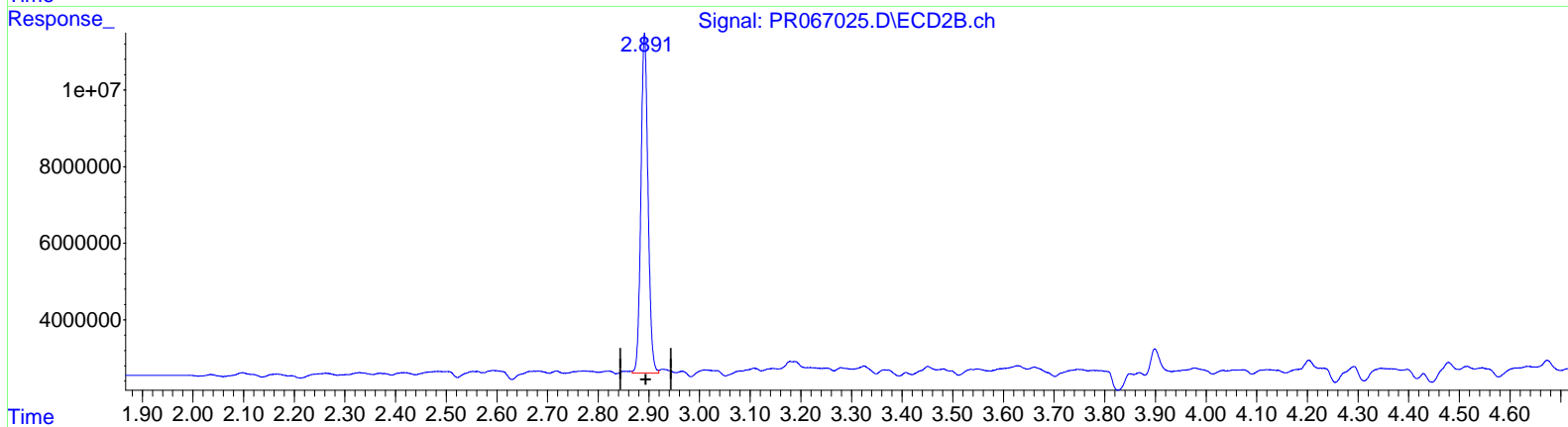
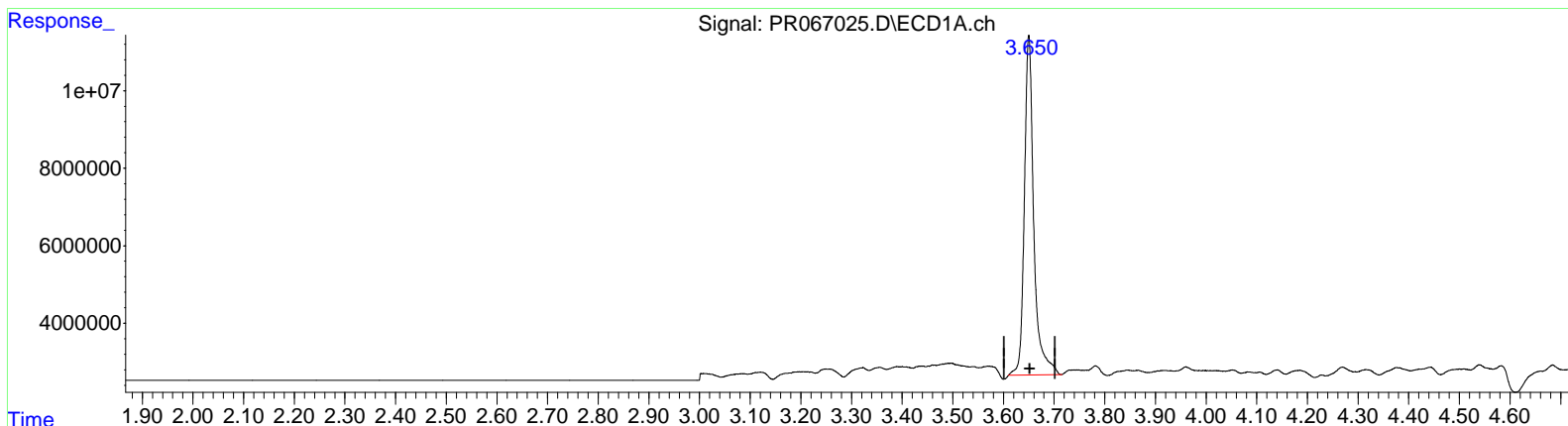
**Instrument :**  
 ECD\_R  
**ClientSampleId :**  
 BHBM1

**Manual Integrations APPROVED**

Reviewed By :Yogesh Patel 05/28/2024  
 Supervised By :Ankita Jodhani 05/28/2024

Integration File signal 1: autoint1.e  
 Integration File signal 2: autoint2.e  
 Quant Time: May 27 02:27:17 2024  
 Quant Method : Z:\pestpcbsrv\HPCHEM1\ECD\_R\Method\PR052124CLP.M  
 Quant Title : GC EXTRACTABLES  
 QLast Update : Wed May 22 04:28:16 2024  
 Response via : Initial Calibration  
 Integrator: ChemStation

Volume Inj. : 1 µl  
 Signal #1 Phase : ZB MR1 Signal #2 Phase: ZB MR2  
 Signal #1 Info : 30Mx0.32mmx 0.5µm Signal #2 Info : 30M x 0.32mm x 0.25µm



(1) Tetrachloro-m-xylene (SA)  
 3.650min 18.444 ng/ml  
 response 113148050

(1) Tetrachloro-m-xylene #2 (SA)  
 2.891min 18.624 ng/ml m  
 response 86711956

Data Path : Z:\pestpcbsrv\HPCHEM1\ECD\_R\Data\PR052624\  
 Data File : PR067025.D  
 Signal(s) : Signal #1: ECD1A.ch Signal #2: ECD2B.ch  
 Acq On : 26 May 2024 16:28  
 Operator : AJ\MA  
 Sample : P2590-17  
 Misc :  
 ALS Vial : 26 Sample Multiplier: 1

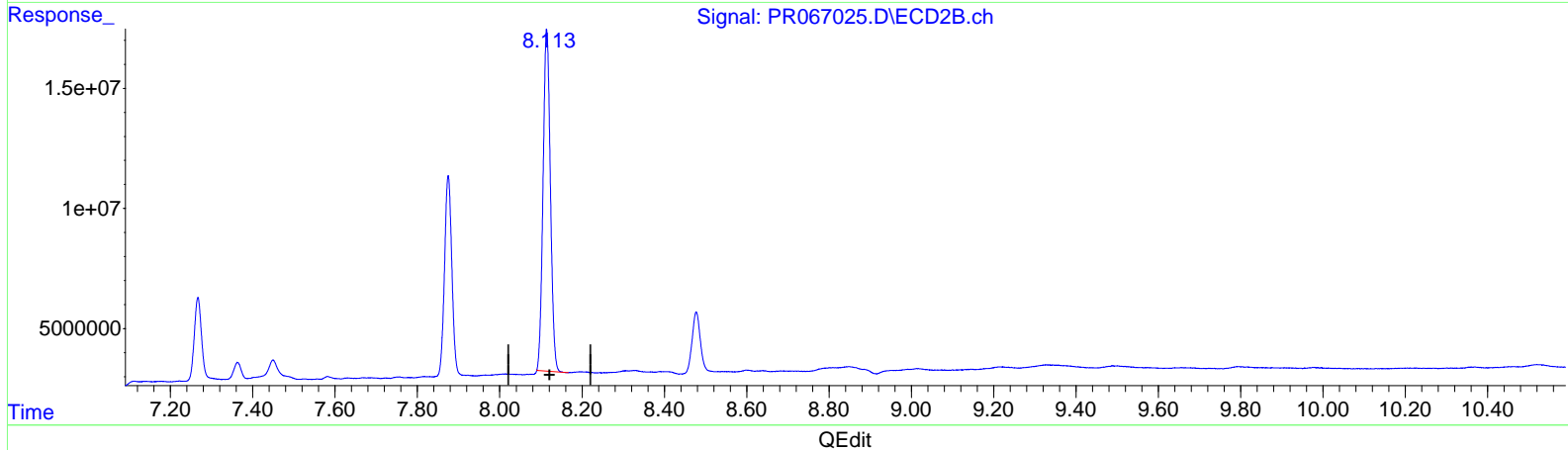
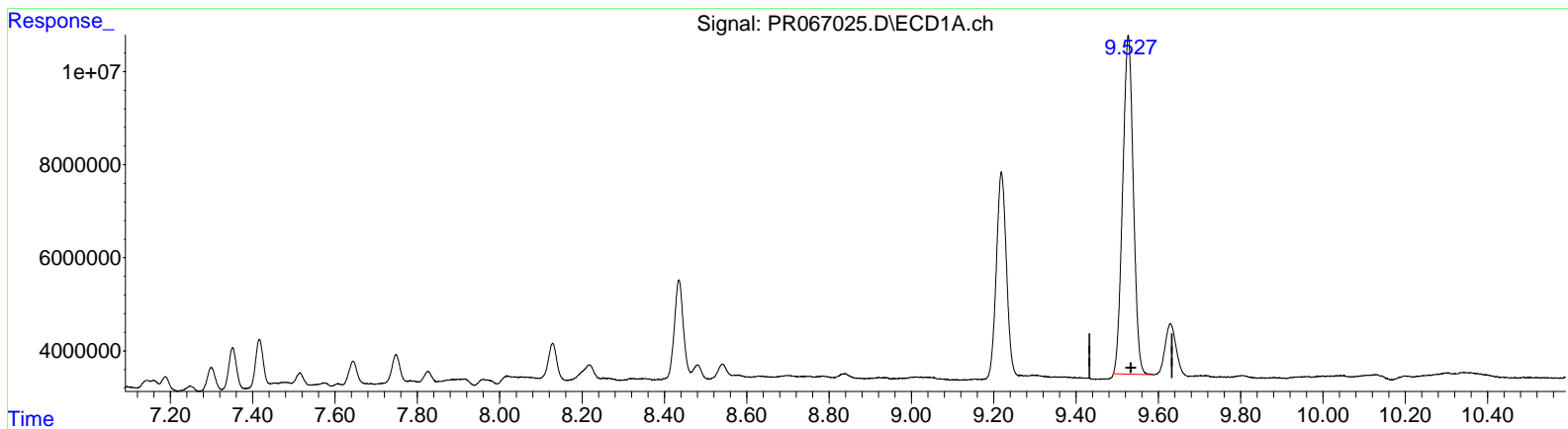
Instrument :  
 ECD\_R  
 ClientSampleId :  
 BHBM1

Manual Integrations APPROVED

Reviewed By :Yogesh Patel 05/28/2024  
 Supervised By :Ankita Jodhani 05/28/2024

Integration File signal 1: autoint1.e  
 Integration File signal 2: autoint2.e  
 Quant Time: May 27 02:27:17 2024  
 Quant Method : Z:\pestpcbsrv\HPCHEM1\ECD\_R\Method\PR052124CLP.M  
 Quant Title : GC EXTRACTABLES  
 QLast Update : Wed May 22 04:28:16 2024  
 Response via : Initial Calibration  
 Integrator: ChemStation

Volume Inj. : 1 µl  
 Signal #1 Phase : ZB MR1 Signal #2 Phase: ZB MR2  
 Signal #1 Info : 30Mx0.32mmx 0.5µm Signal #2 Info : 30M x 0.32mm x 0.25µm



(2) Decachlorobiphenyl (SA)  
 9.527min 100.623 ng/ml  
 response 130655167

(2) Decachlorobiphenyl #2 (SA)  
 8.114min 78.797 ng/ml  
 response 175437316

Data Path : Z:\pestpcbsrv\HPCHEM1\ECD\_R\Data\PR052624\  
 Data File : PR067025.D  
 Signal(s) : Signal #1: ECD1A.ch Signal #2: ECD2B.ch  
 Acq On : 26 May 2024 16:28  
 Operator : AJ\MA  
 Sample : P2590-17  
 Misc :  
 ALS Vial : 26 Sample Multiplier: 1

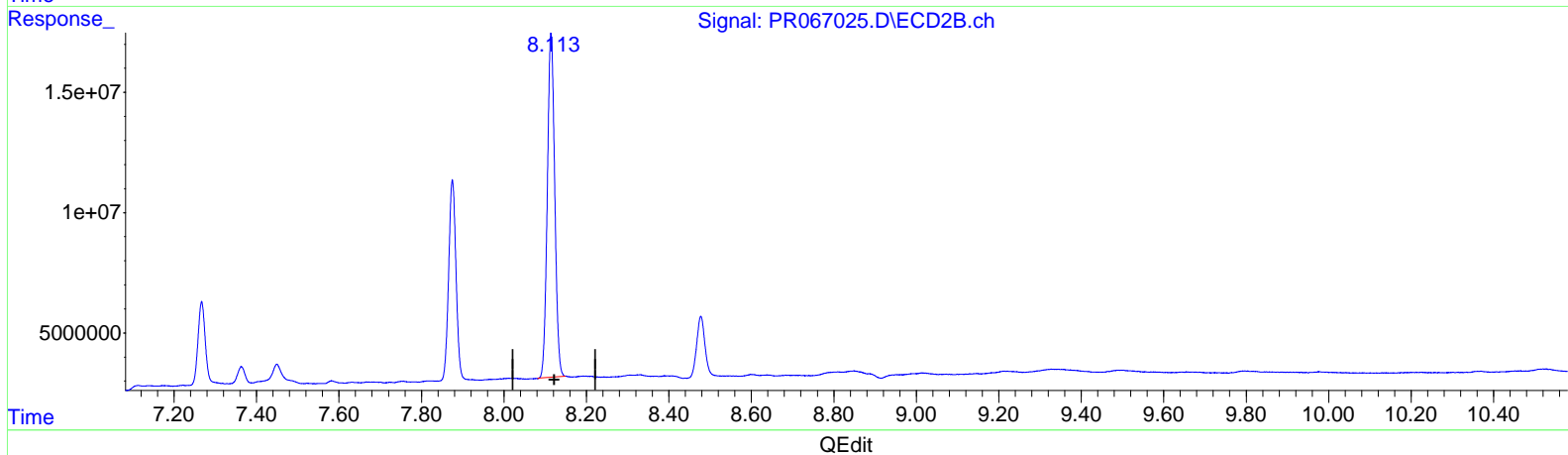
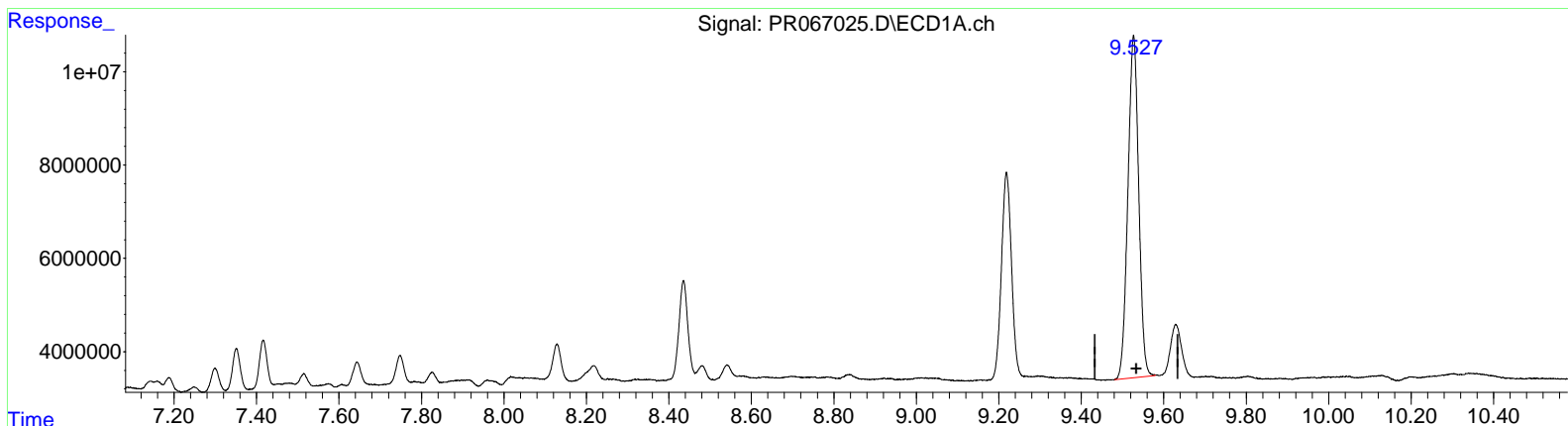
Instrument :  
 ECD\_R  
 ClientSampleId :  
 BHBM1

Manual Integrations APPROVED

Reviewed By : Yogesh Patel 05/28/2024  
 Supervised By : Ankita Jodhani 05/28/2024

Integration File signal 1: autoint1.e  
 Integration File signal 2: autoint2.e  
 Quant Time: May 27 02:27:17 2024  
 Quant Method : Z:\pestpcbsrv\HPCHEM1\ECD\_R\Method\PR052124CLP.M  
 Quant Title : GC EXTRACTABLES  
 QLast Update : Wed May 22 04:28:16 2024  
 Response via : Initial Calibration  
 Integrator: ChemStation

Volume Inj. : 1 µl  
 Signal #1 Phase : ZB MR1 Signal #2 Phase: ZB MR2  
 Signal #1 Info : 30Mx0.32mmx 0.5µm Signal #2 Info : 30M x 0.32mm x 0.25µm



(2) Decachlorobiphenyl (SA)  
 9.527min 102.900 ng/ml m  
 response 133612800

(2) Decachlorobiphenyl #2 (SA)  
 8.113min 79.782 ng/ml m  
 response 177631108