

Data Path : Z:\pestpcbsrv\HPCHEM1\ECD\_R\Data\PR052720\  
 Data File : PR045CCC.D  
 Signal(s) : Signal #1: ECD1A.ch Signal #2: ECD2B.ch  
 Acq On : 27 May 2020 19:22  
 Operator : AJ\MA  
 Sample : AR1660CCC500  
 Misc :  
 ALS Vial : 3 Sample Multiplier: 1

Instrument :  
 ECD\_R  
 ClientSampled :

Integration File signal 1: autoint1.e  
 Integration File signal 2: autoint2.e  
 Quant Time: May 28 06:58:14 2020  
 Quant Method : Z:\pestpcbsrv\HPCHEM1\ECD\_R\Method\PR052620.M  
 Quant Title : GC EXTRACTABLES  
 QLast Update : Wed May 27 04:32:40 2020  
 Response via : Initial Calibration  
 Integrator: ChemStation

Volume Inj. : 2 µl  
 Signal #1 Phase : ZB-MR1 Signal #2 Phase: ZB-MR2  
 Signal #1 Info : 30Mx0.32mmx 0.50µ Signal #2 Info : 30M x 0.32mm x 0.25µm

Compound	RT#1	RT#2	Resp#1	Resp#2	ng/ml	ng/ml
System Monitoring Compounds						
1) SA Tetrachlo...	4.774	4.009	76313147	619.4E6	41.101	46.056
2) SA Decachlor...	10.796	9.151	98475429	790.2E6	49.166	57.202
Target Compounds						
3) L1 AR-1016-1	5.965	5.112	29211947	225.3E6	421.580	452.657
4) L1 AR-1016-2	5.988	5.132	40554436	317.2E6	418.491	461.909
5) L1 AR-1016-3	6.051	5.311	27047282	165.0E6	442.840	455.998
6) L1 AR-1016-4	6.153	5.350	22820924	128.5E6	480.628	465.498
7) L1 AR-1016-5	6.447	5.569	23413582	175.2E6	502.341	448.566
8) L2 AR-1221-1	4.982	4.221	2397239	19633478	122.478	128.506
9) L2 AR-1221-2	5.077	4.311	3639855	28183509	249.142	252.448
10) L2 AR-1221-3	5.156	4.388	13412220	102.6E6	282.681	292.455
11) L3 AR-1232-1	5.156	4.388	13412220	102.6E6	355.691	363.824
12) L3 AR-1232-2	5.694	5.132	20257993	317.2E6	1028.747	1072.275
13) L3 AR-1232-3	5.988	5.311	40554436	165.0E6	1007.194	1063.870
14) L3 AR-1232-4	6.153	5.394	22820924	157.7E6	1162.657	1208.463
15) L3 AR-1232-5	6.237	5.569	20319441	175.2E6	1426.503	1173.996
16) L4 AR-1242-1	5.965	5.112	29211947	225.3E6	557.887	563.193
17) L4 AR-1242-2	5.988	5.132	40554436	317.2E6	540.741	577.685
18) L4 AR-1242-3	6.051	5.311	27047282	165.0E6	591.379	567.265
19) L4 AR-1242-4	6.153	5.394	22820924	157.7E6	615.189	579.088
20) L4 AR-1242-5	6.895	5.924	5678301	136.4E6	137.296	366.831 #
21) L5 AR-1248-1	5.965	5.112	29211947	225.3E6	670.574	682.487
22) L5 AR-1248-2	6.237	5.350	20319441	128.5E6	354.954	312.784
23) L5 AR-1248-3	6.447	5.394	23413582	157.7E6	358.800	374.539
24) L5 AR-1248-4	6.855	5.569	4536747	175.2E6	60.744	331.583 #
25) L5 AR-1248-5	6.895	5.964	5678301	25189909	80.041	47.971 #
26) L6 AR-1254-1	6.827	5.924	17169367	136.4E6	250.032	181.377 #
27) L6 AR-1254-2	7.043	6.071	15680346	114.0E6	145.617	176.471
28) L6 AR-1254-3	7.418	6.495	8310690	269.3E6	70.107	246.784 #
29) L6 AR-1254-4	7.706	6.708	5890351	35780337	65.381	50.342
30) L6 AR-1254-5	8.128	7.129	51801825	432.4E6	527.020	462.977
31) L7 AR-1260-1	7.579	6.611	32679100	315.6E6	386.835	468.529
32) L7 AR-1260-2	7.837	6.797	42873044	391.7E6	409.653	484.635
33) L7 AR-1260-3	8.201	6.955	33138656	360.6E6	411.786	471.285
34) L7 AR-1260-4	8.447	7.430	39348561	310.4E6	407.283	479.061
35) L7 AR-1260-5	8.795	7.669	81673455	783.6E6	410.179	485.243
36) L8 AR-1262-1	8.201	7.129	33138656	432.4E6	289.354	876.139 #
37) L8 AR-1262-2	8.795	7.669	81673455	783.6E6	372.080	433.957
38) L8 AR-1262-3	9.133	7.957	18284041	185.3E6	191.196	274.441 #
39) L8 AR-1262-4	9.217	8.020	32589272	575.9E6	296.371	445.782 #
40) L8 AR-1262-5	9.966	8.542	25169580	211.2E6	311.540	348.342
41) L9 AR-1268-1	9.133	7.957	18284041	185.3E6	70.047	91.213 #

Data Path : Z:\pestpcbsrv\HPCHEM1\ECD\_R\Data\PR052720\  
 Data File : PR045CCC.D  
 Signal(s) : Signal #1: ECD1A.ch Signal #2: ECD2B.ch  
 Acq On : 27 May 2020 19:22  
 Operator : AJ\MA  
 Sample : AR1660CCC500  
 Misc :  
 ALS Vial : 3 Sample Multiplier: 1

Instrument :  
 ECD\_R  
 ClientSampleId :

Integration File signal 1: autoint1.e  
 Integration File signal 2: autoint2.e  
 Quant Time: May 28 06:58:14 2020  
 Quant Method : Z:\pestpcbsrv\HPCHEM1\ECD\_R\Method\PR052620.M  
 Quant Title : GC EXTRACTABLES  
 QLast Update : Wed May 27 04:32:40 2020  
 Response via : Initial Calibration  
 Integrator: ChemStation

Volume Inj. : 2 µl  
 Signal #1 Phase : ZB-MR1 Signal #2 Phase: ZB-MR2  
 Signal #1 Info : 30Mx0.32mmx 0.50µ Signal #2 Info : 30M x 0.32mm x 0.25µm

	Compound	RT#1	RT#2	Resp#1	Resp#2	ng/ml	ng/ml
42)	L9 AR-1268-2	9.217	8.020	32589272	575.9E6	135.104	299.070 #
43)	L9 AR-1268-3	9.485	8.240	1215734	11147501	6.079	7.040
44)	L9 AR-1268-4	9.966	8.542	25169580	211.2E6	276.079	305.538
45)	L9 AR-1268-5	10.422	8.865	7083158	60411750	10.124	11.987

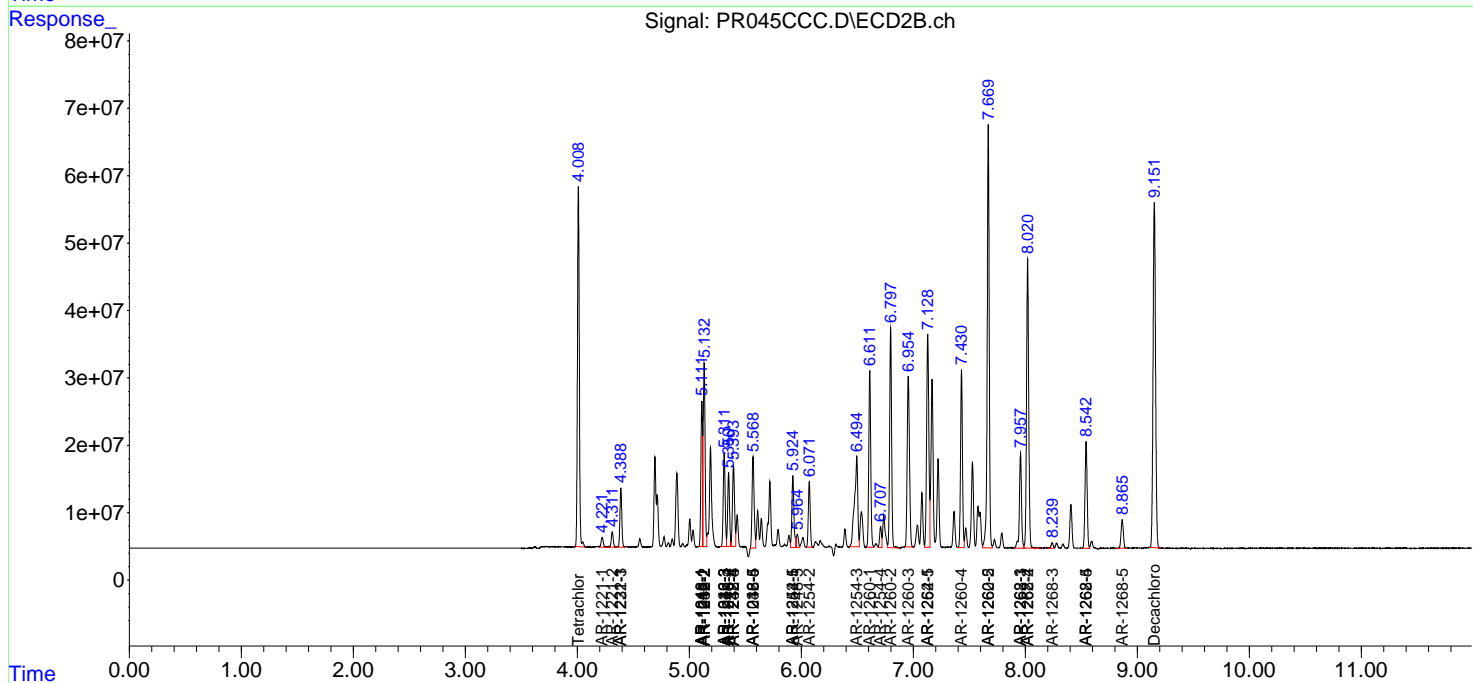
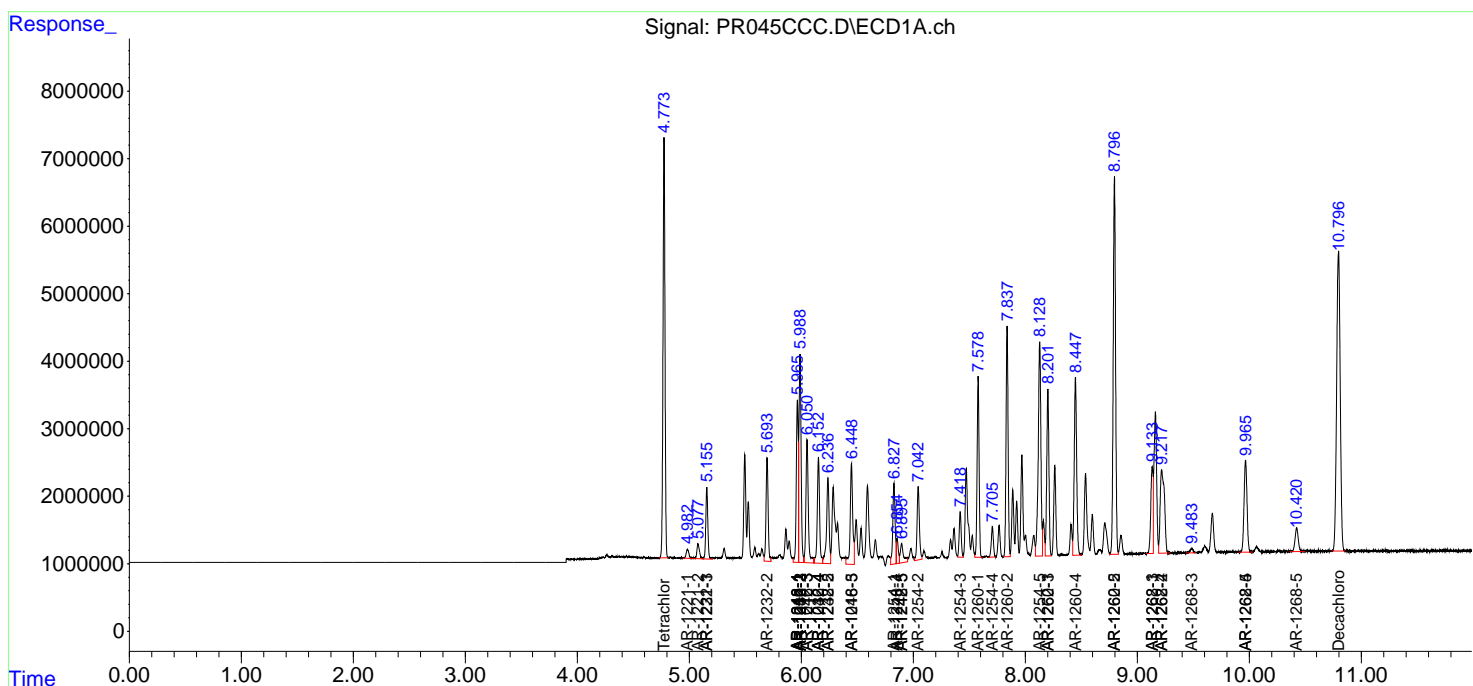
(f)=RT Delta > 1/2 Window (#)=Amounts differ by > 25% (m)=manual int.

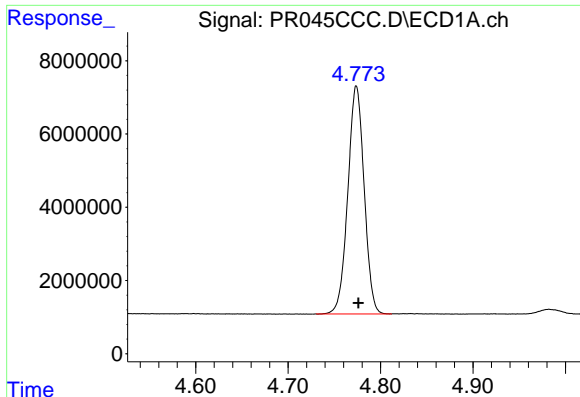
Data Path : Z:\pestpcbsrv\HPCHEM1\ECD\_R\Data\PR052720\  
 Data File : PR045CCC.D  
 Signal(s) : Signal #1: ECD1A.ch Signal #2: ECD2B.ch  
 Acq On : 27 May 2020 19:22  
 Operator : AJ\MA  
 Sample : AR1660CCC500  
 Misc :  
 ALS Vial : 3 Sample Multiplier: 1

Instrument :  
 ECD\_R  
 ClientSampled :

Integration File signal 1: autoint1.e  
 Integration File signal 2: autoint2.e  
 Quant Time: May 28 06:58:14 2020  
 Quant Method : Z:\pestpcbsrv\HPCHEM1\ECD\_R\Method\PR052620.M  
 Quant Title : GC EXTRACTABLES  
 QLast Update : Wed May 27 04:32:40 2020  
 Response via : Initial Calibration  
 Integrator: ChemStation

Volume Inj. : 2 µl  
 Signal #1 Phase : ZB-MR1 Signal #2 Phase: ZB-MR2  
 Signal #1 Info : 30Mx0.32mmx 0.50µ Signal #2 Info : 30M x 0.32mm x 0.25µm

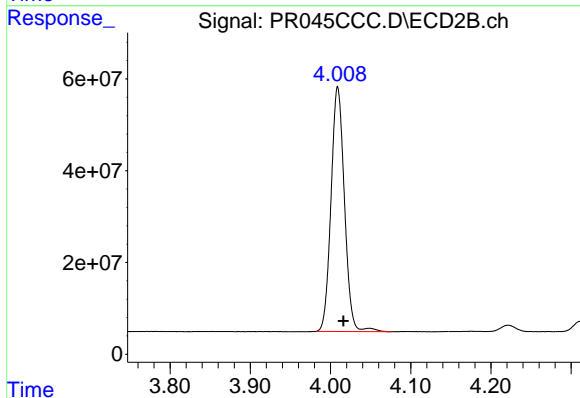




#1 Tetrachloro-m-xylene

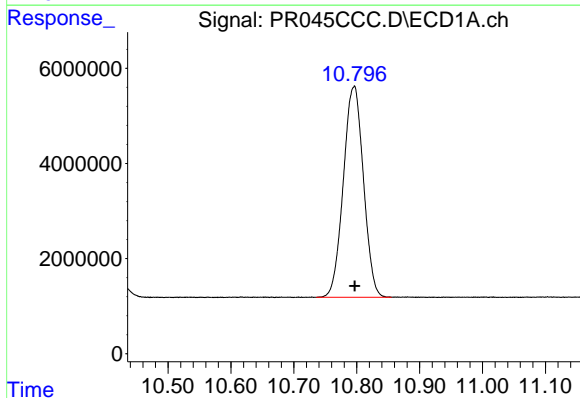
R.T.: 4.774 min  
 Delta R.T.: -0.002 min  
 Response: 76313147  
 Conc: 41.10 ng/ml

Instrument :  
 ECD\_R  
 ClientSampleId :



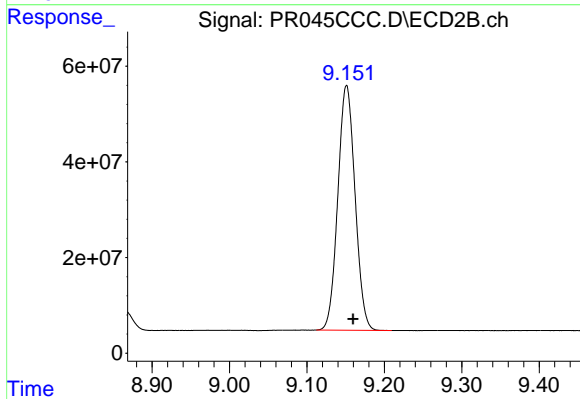
#1 Tetrachloro-m-xylene

R.T.: 4.009 min  
 Delta R.T.: -0.007 min  
 Response: 619381284  
 Conc: 46.06 ng/ml



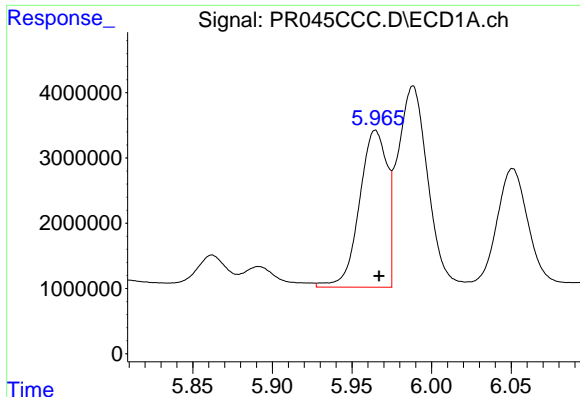
#2 Decachlorobiphenyl

R.T.: 10.796 min  
 Delta R.T.: 0.000 min  
 Response: 98475429  
 Conc: 49.17 ng/ml



#2 Decachlorobiphenyl

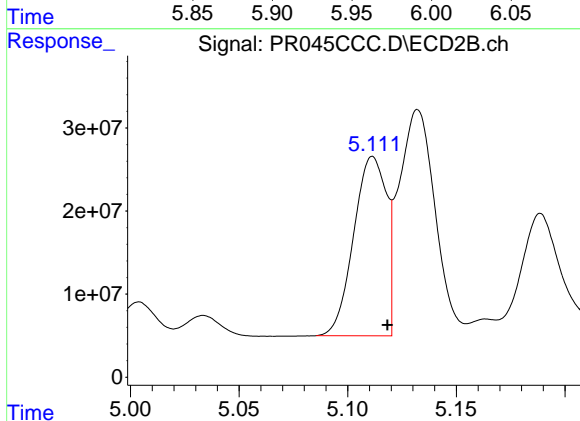
R.T.: 9.151 min  
 Delta R.T.: -0.008 min  
 Response: 790189070  
 Conc: 57.20 ng/ml



#3 AR-1016-1

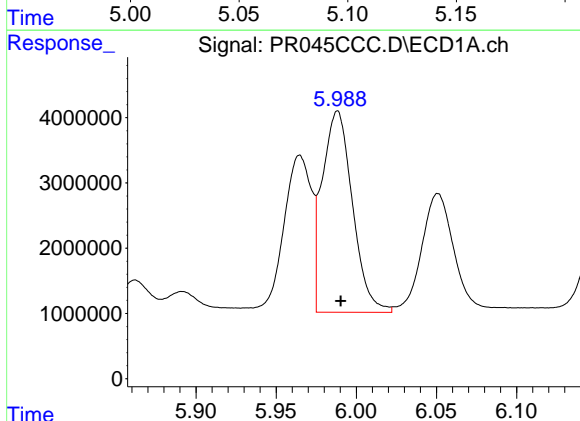
R.T.: 5.965 min  
 Delta R.T.: -0.002 min  
 Response: 29211947  
 Conc: 421.58 ng/ml

Instrument :  
 ECD\_R  
 ClientSampled :



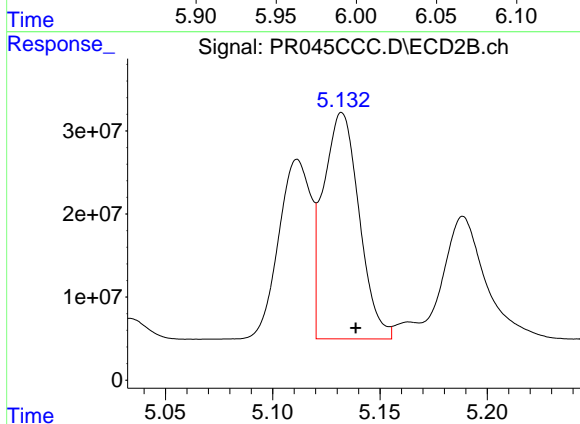
#3 AR-1016-1

R.T.: 5.112 min  
 Delta R.T.: -0.006 min  
 Response: 225347391  
 Conc: 452.66 ng/ml



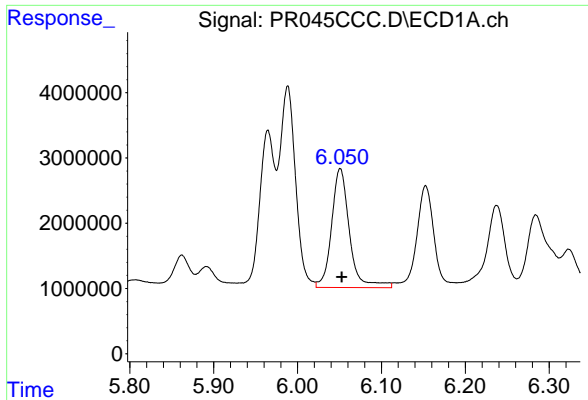
#4 AR-1016-2

R.T.: 5.988 min  
 Delta R.T.: -0.002 min  
 Response: 40554436  
 Conc: 418.49 ng/ml



#4 AR-1016-2

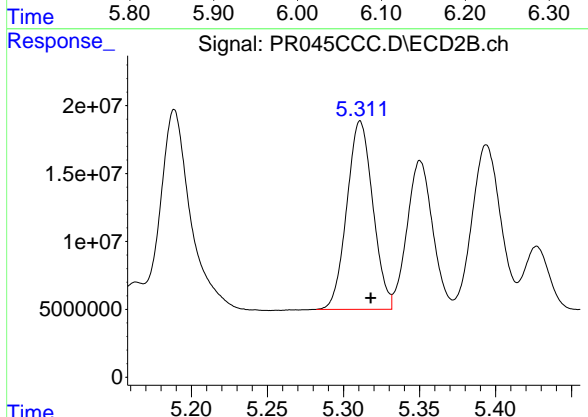
R.T.: 5.132 min  
 Delta R.T.: -0.007 min  
 Response: 317225958  
 Conc: 461.91 ng/ml



#5 AR-1016-3

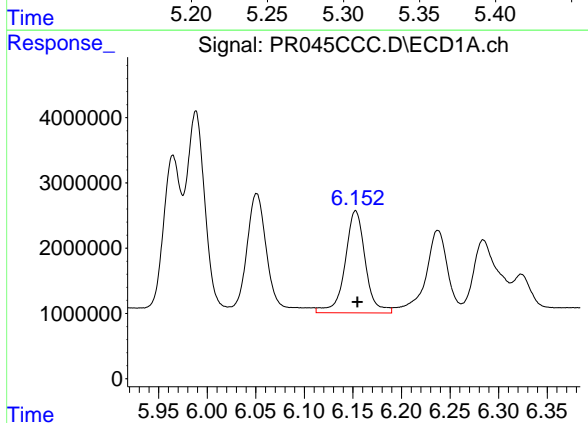
R.T.: 6.051 min  
 Delta R.T.: -0.002 min  
 Response: 27047282  
 Conc: 442.84 ng/ml

Instrument :  
 ECD\_R  
 ClientSampled :



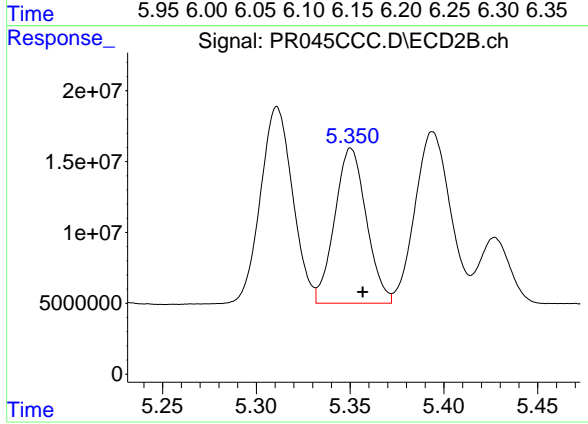
#5 AR-1016-3

R.T.: 5.311 min  
 Delta R.T.: -0.007 min  
 Response: 165035685  
 Conc: 456.00 ng/ml



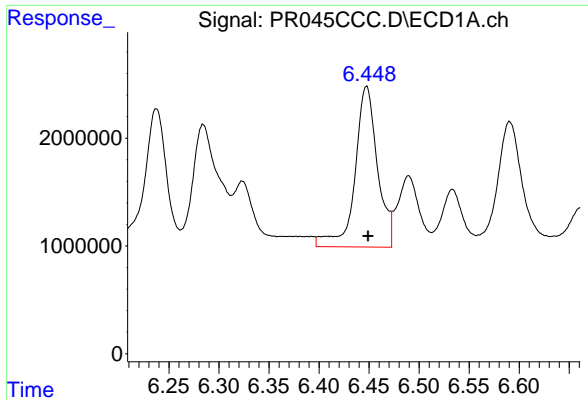
#6 AR-1016-4

R.T.: 6.153 min  
 Delta R.T.: -0.002 min  
 Response: 22820924  
 Conc: 480.63 ng/ml



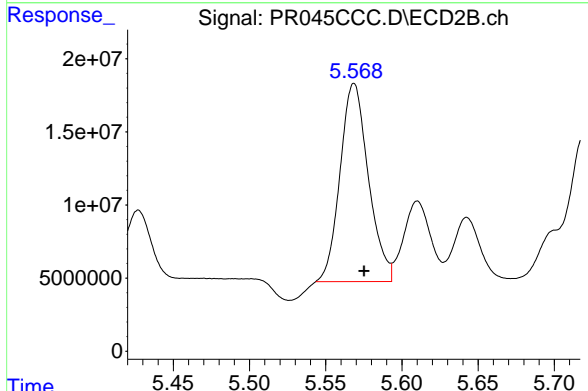
#6 AR-1016-4

R.T.: 5.350 min  
 Delta R.T.: -0.006 min  
 Response: 128545234  
 Conc: 465.50 ng/ml

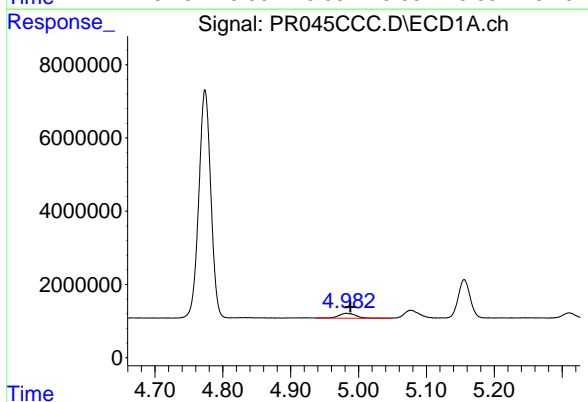


#7 AR-1016-5  
 R.T.: 6.447 min  
 Delta R.T.: -0.002 min  
 Response: 23413582  
 Conc: 502.34 ng/ml

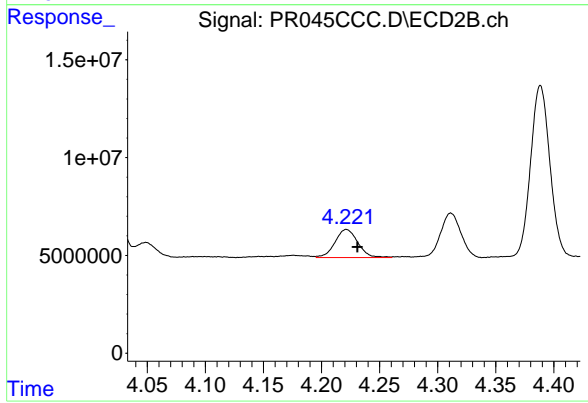
Instrument :  
 ECD\_R  
 ClientSampled :



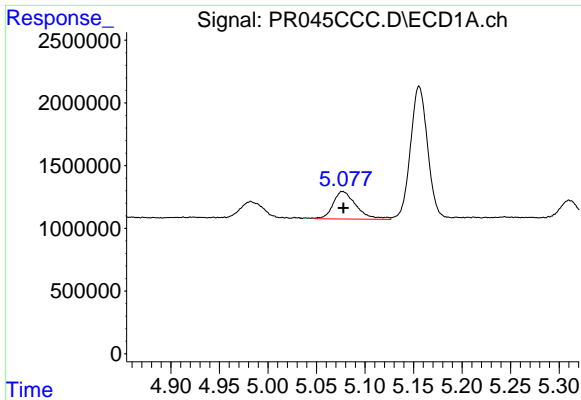
#7 AR-1016-5  
 R.T.: 5.569 min  
 Delta R.T.: -0.007 min  
 Response: 175226912  
 Conc: 448.57 ng/ml



#8 AR-1221-1  
 R.T.: 4.982 min  
 Delta R.T.: -0.006 min  
 Response: 2397239  
 Conc: 122.48 ng/ml



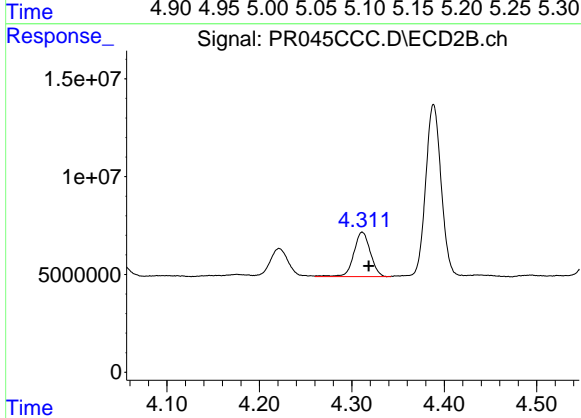
#8 AR-1221-1  
 R.T.: 4.221 min  
 Delta R.T.: -0.009 min  
 Response: 19633478  
 Conc: 128.51 ng/ml



#9 AR-1221-2

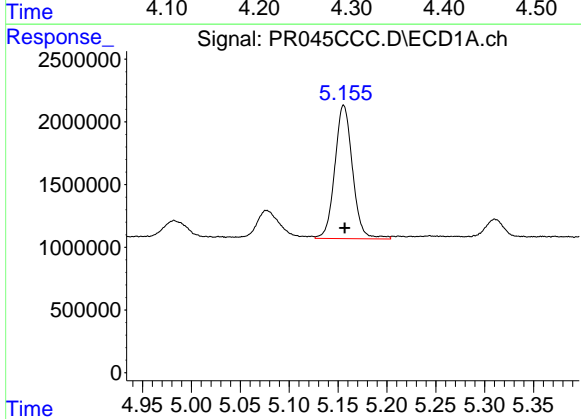
R.T.: 5.077 min  
 Delta R.T.: 0.000 min  
 Response: 3639855  
 Conc: 249.14 ng/ml

Instrument :  
 ECD\_R  
 ClientSampleId :



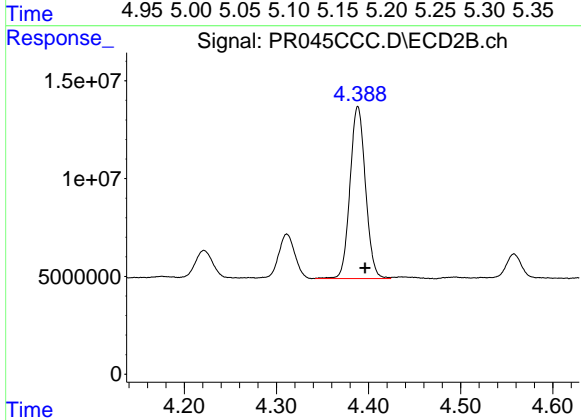
#9 AR-1221-2

R.T.: 4.311 min  
 Delta R.T.: -0.007 min  
 Response: 28183509  
 Conc: 252.45 ng/ml



#10 AR-1221-3

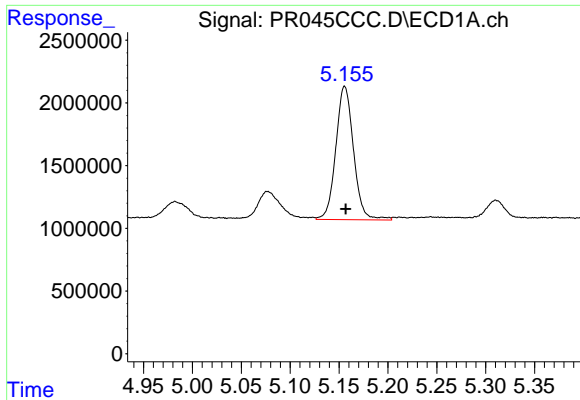
R.T.: 5.156 min  
 Delta R.T.: -0.001 min  
 Response: 13412220  
 Conc: 282.68 ng/ml



#10 AR-1221-3

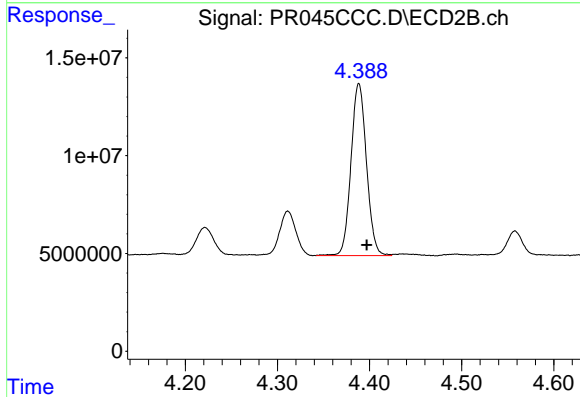
R.T.: 4.388 min  
 Delta R.T.: -0.008 min  
 Response: 102625888  
 Conc: 292.45 ng/ml



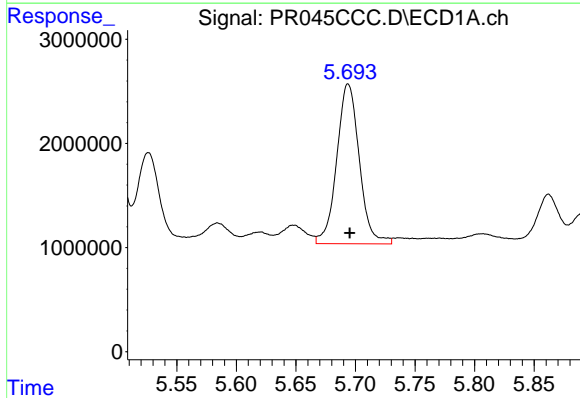


#11 AR-1232-1  
 R.T.: 5.156 min  
 Delta R.T.: -0.001 min  
 Response: 13412220  
 Conc: 355.69 ng/ml

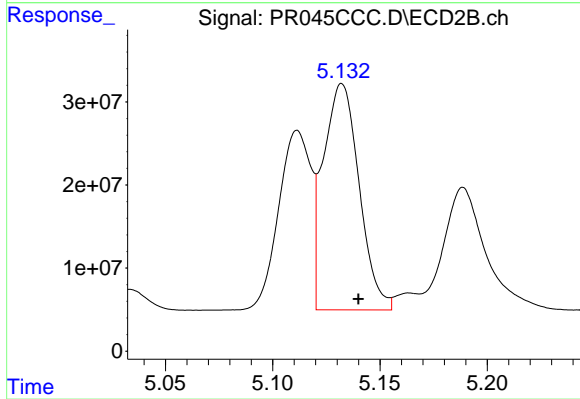
Instrument :  
 ECD\_R  
 ClientSampled :



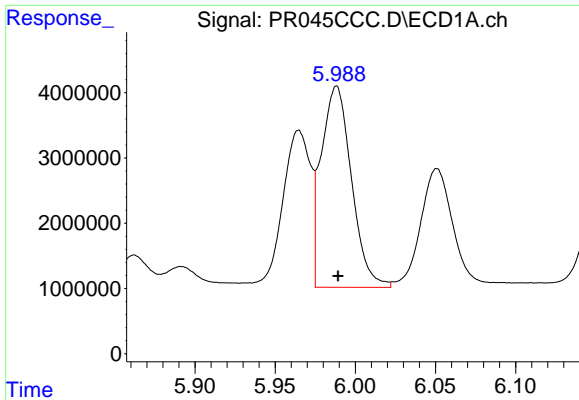
#11 AR-1232-1  
 R.T.: 4.388 min  
 Delta R.T.: -0.008 min  
 Response: 102625888  
 Conc: 363.82 ng/ml



#12 AR-1232-2  
 R.T.: 5.694 min  
 Delta R.T.: -0.001 min  
 Response: 20257993  
 Conc: 1028.75 ng/ml



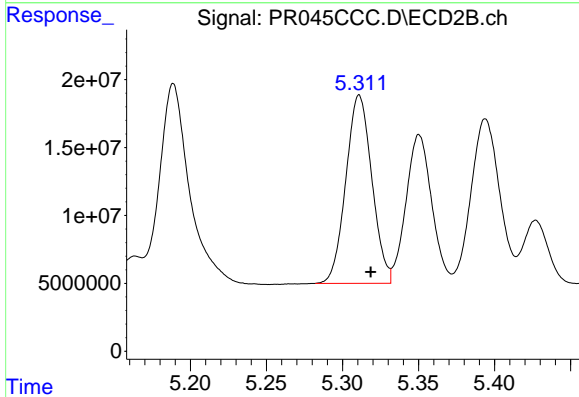
#12 AR-1232-2  
 R.T.: 5.132 min  
 Delta R.T.: -0.008 min  
 Response: 317225958  
 Conc: 1072.28 ng/ml



#13 AR-1232-3

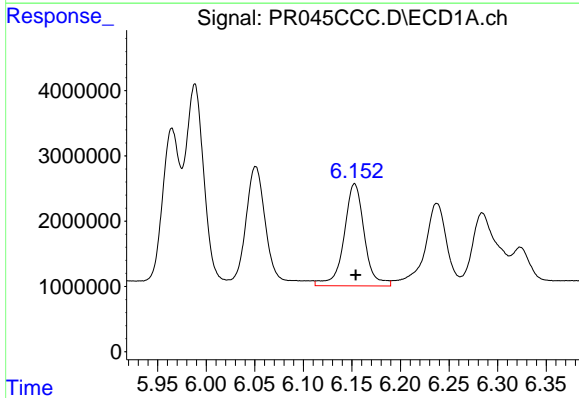
R.T.: 5.988 min  
 Delta R.T.: 0.000 min  
 Response: 40554436  
 Conc: 1007.19 ng/ml

Instrument :  
 ECD\_R  
 ClientSampled :



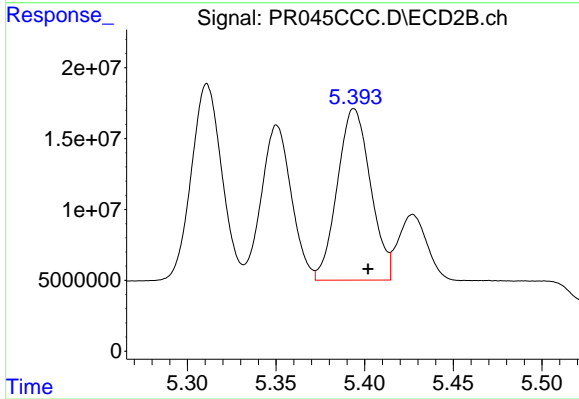
#13 AR-1232-3

R.T.: 5.311 min  
 Delta R.T.: -0.008 min  
 Response: 165035685  
 Conc: 1063.87 ng/ml



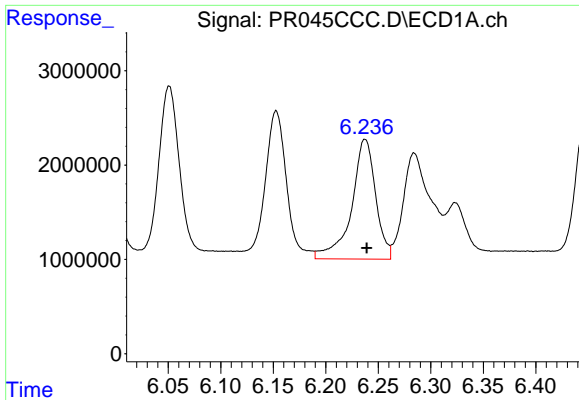
#14 AR-1232-4

R.T.: 6.153 min  
 Delta R.T.: -0.001 min  
 Response: 22820924  
 Conc: 1162.66 ng/ml



#14 AR-1232-4

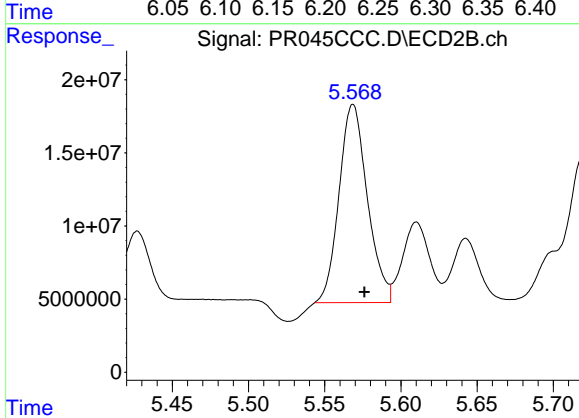
R.T.: 5.394 min  
 Delta R.T.: -0.008 min  
 Response: 157735697  
 Conc: 1208.46 ng/ml



#15 AR-1232-5

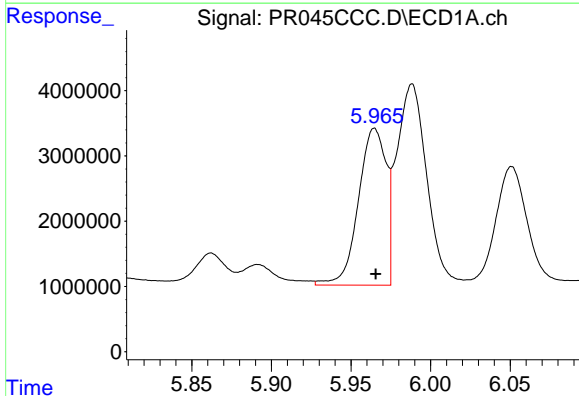
R.T.: 6.237 min  
 Delta R.T.: -0.001 min  
 Response: 20319441  
 Conc: 1426.50 ng/ml

Instrument :  
 ECD\_R  
 ClientSampleId :



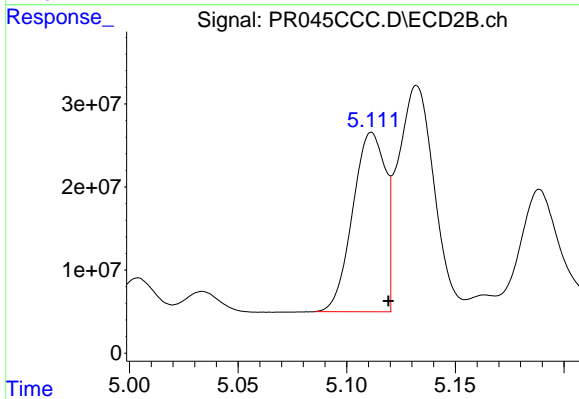
#15 AR-1232-5

R.T.: 5.569 min  
 Delta R.T.: -0.008 min  
 Response: 175226912  
 Conc: 1174.00 ng/ml



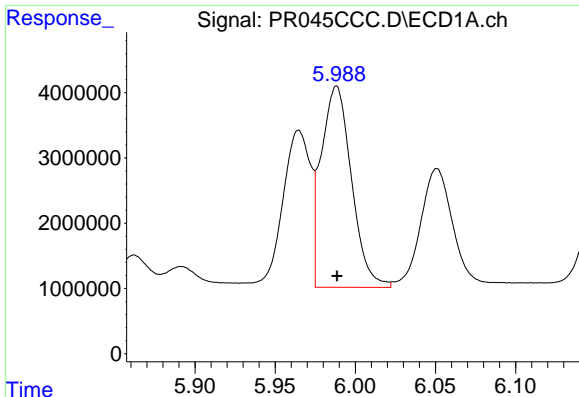
#16 AR-1242-1

R.T.: 5.965 min  
 Delta R.T.: 0.000 min  
 Response: 29211947  
 Conc: 557.89 ng/ml



#16 AR-1242-1

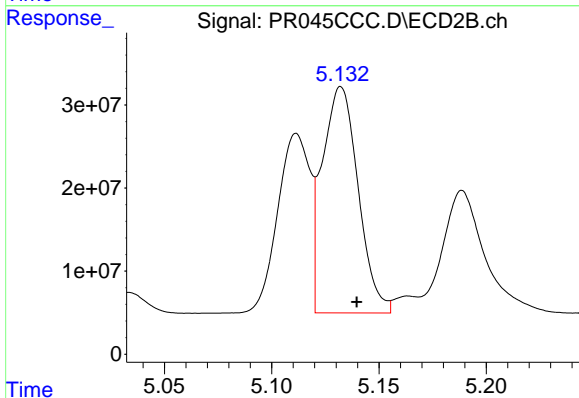
R.T.: 5.112 min  
 Delta R.T.: -0.007 min  
 Response: 225347391  
 Conc: 563.19 ng/ml



#17 AR-1242-2

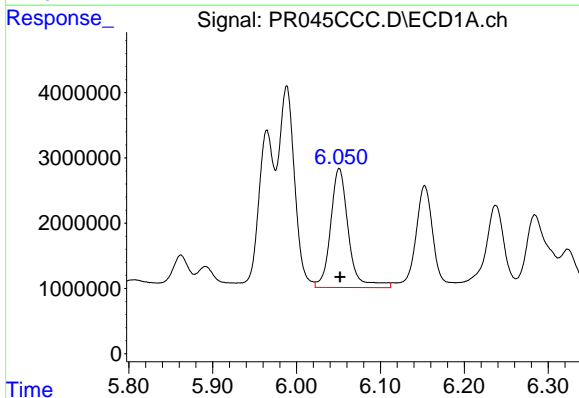
R.T.: 5.988 min  
 Delta R.T.: 0.000 min  
 Response: 40554436  
 Conc: 540.74 ng/ml

Instrument :  
 ECD\_R  
 ClientSampled :



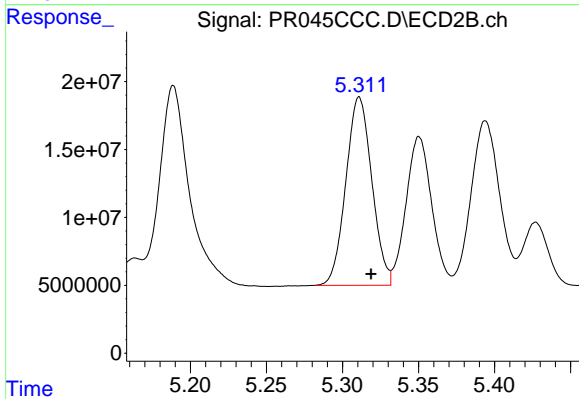
#17 AR-1242-2

R.T.: 5.132 min  
 Delta R.T.: -0.007 min  
 Response: 317225958  
 Conc: 577.68 ng/ml



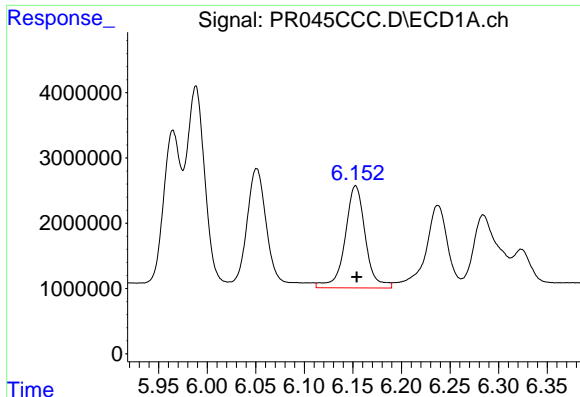
#18 AR-1242-3

R.T.: 6.051 min  
 Delta R.T.: 0.000 min  
 Response: 27047282  
 Conc: 591.38 ng/ml



#18 AR-1242-3

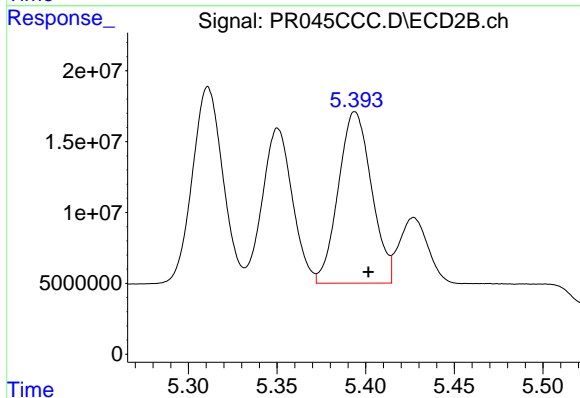
R.T.: 5.311 min  
 Delta R.T.: -0.008 min  
 Response: 165035685  
 Conc: 567.27 ng/ml



#19 AR-1242-4

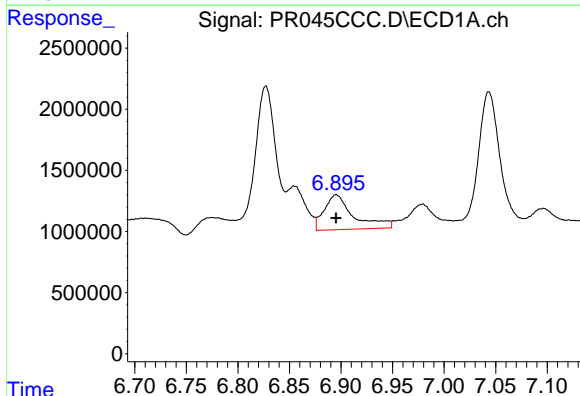
R.T.: 6.153 min  
 Delta R.T.: 0.000 min  
 Response: 22820924  
 Conc: 615.19 ng/ml

Instrument :  
 ECD\_R  
 ClientSampled :



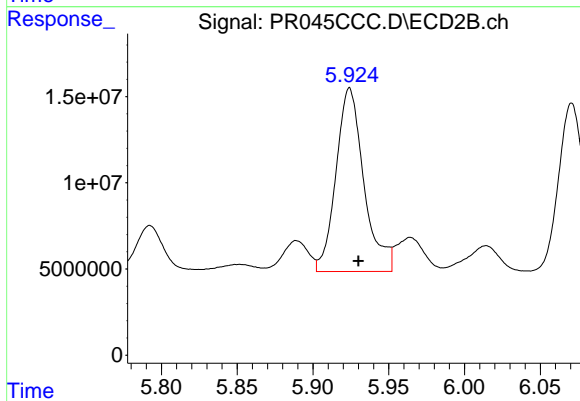
#19 AR-1242-4

R.T.: 5.394 min  
 Delta R.T.: -0.007 min  
 Response: 157735697  
 Conc: 579.09 ng/ml



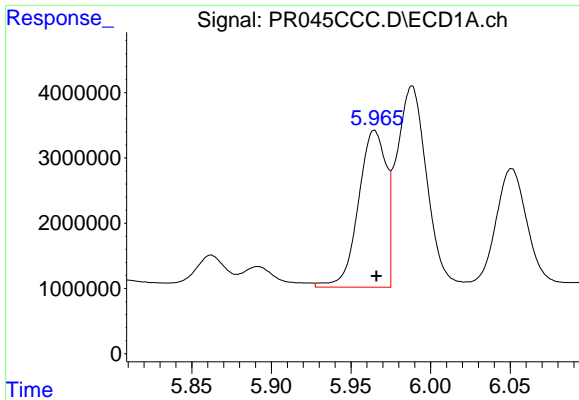
#20 AR-1242-5

R.T.: 6.895 min  
 Delta R.T.: 0.000 min  
 Response: 5678301  
 Conc: 137.30 ng/ml



#20 AR-1242-5

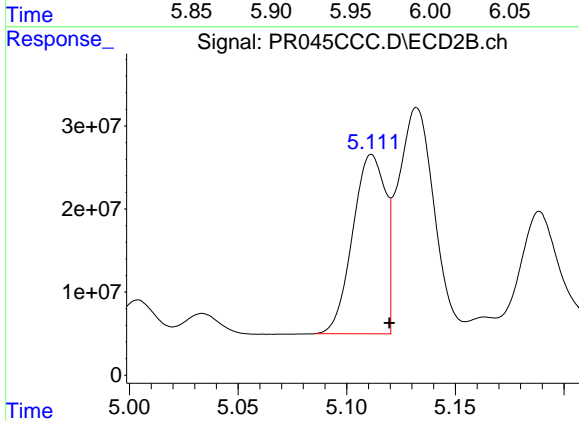
R.T.: 5.924 min  
 Delta R.T.: -0.006 min  
 Response: 136367046  
 Conc: 366.83 ng/ml



#21 AR-1248-1

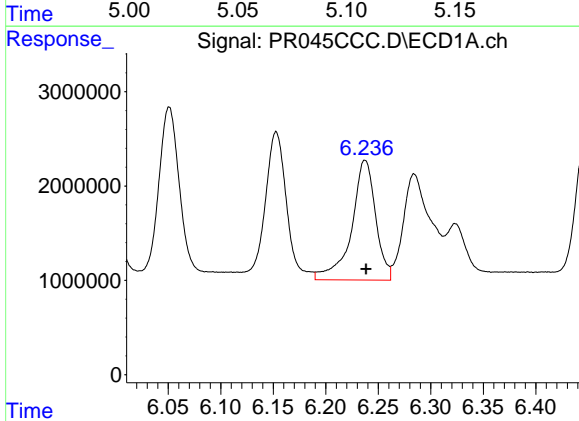
R.T.: 5.965 min  
 Delta R.T.: -0.001 min  
 Response: 29211947  
 Conc: 670.57 ng/ml

Instrument :  
 ECD\_R  
 ClientSampled :



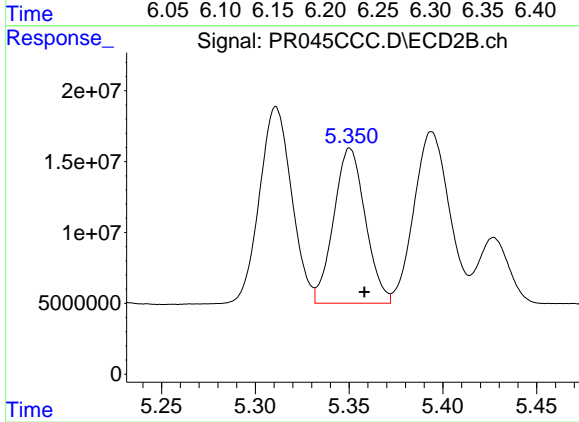
#21 AR-1248-1

R.T.: 5.112 min  
 Delta R.T.: -0.008 min  
 Response: 225347391  
 Conc: 682.49 ng/ml



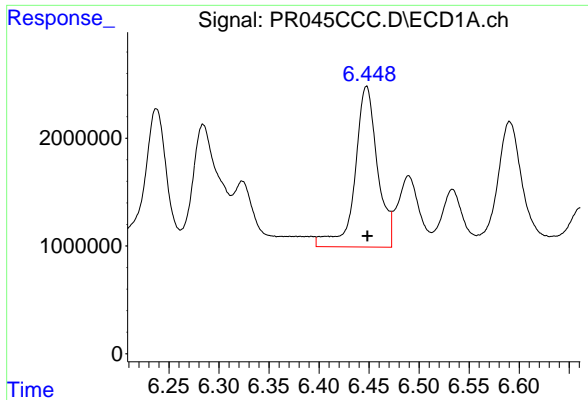
#22 AR-1248-2

R.T.: 6.237 min  
 Delta R.T.: 0.000 min  
 Response: 20319441  
 Conc: 354.95 ng/ml



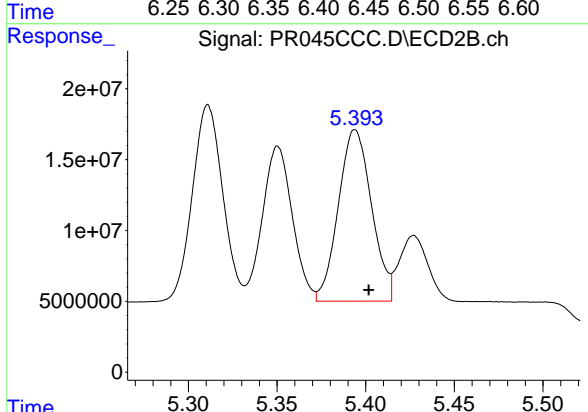
#22 AR-1248-2

R.T.: 5.350 min  
 Delta R.T.: -0.008 min  
 Response: 128545234  
 Conc: 312.78 ng/ml

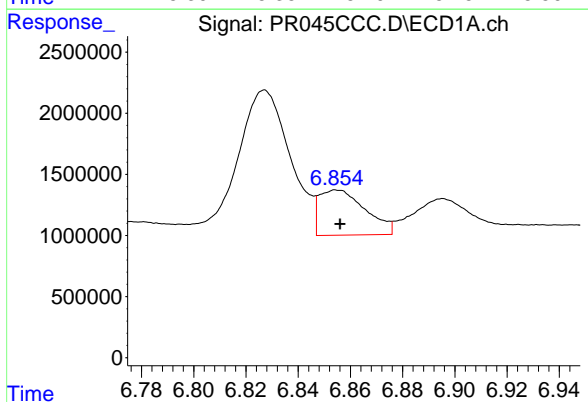


#23 AR-1248-3  
 R.T.: 6.447 min  
 Delta R.T.: 0.000 min  
 Response: 23413582  
 Conc: 358.80 ng/ml

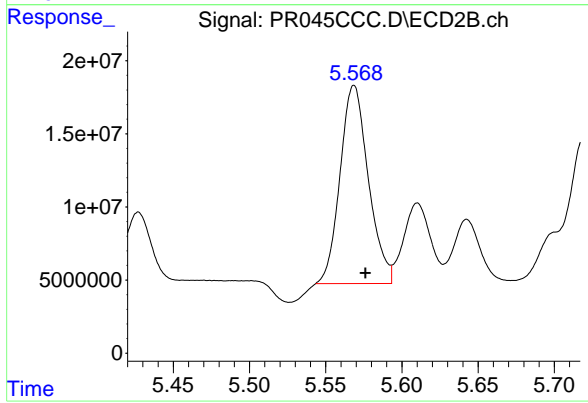
Instrument :  
 ECD\_R  
 ClientSampleId :



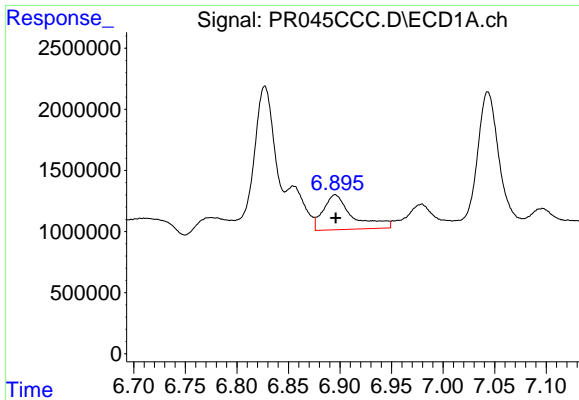
#23 AR-1248-3  
 R.T.: 5.394 min  
 Delta R.T.: -0.008 min  
 Response: 157735697  
 Conc: 374.54 ng/ml



#24 AR-1248-4  
 R.T.: 6.855 min  
 Delta R.T.: -0.001 min  
 Response: 4536747  
 Conc: 60.74 ng/ml



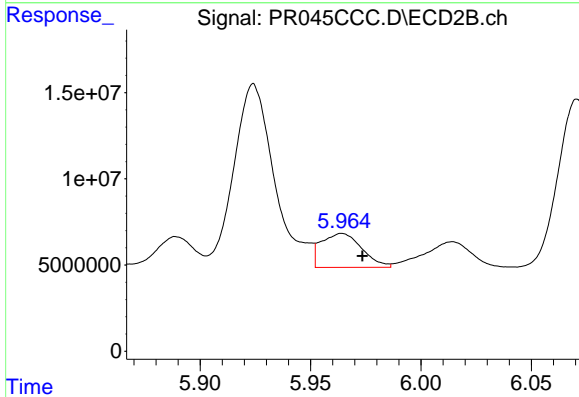
#24 AR-1248-4  
 R.T.: 5.569 min  
 Delta R.T.: -0.008 min  
 Response: 175226912  
 Conc: 331.58 ng/ml



#25 AR-1248-5

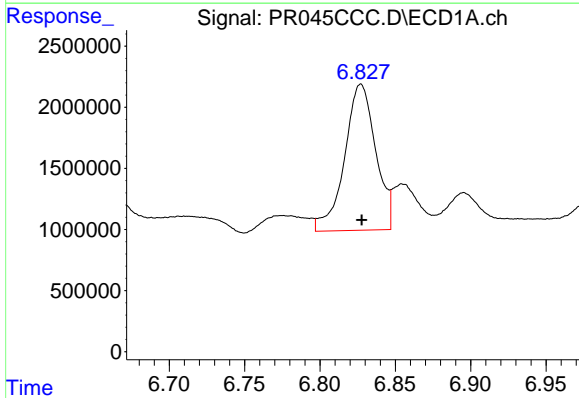
R.T.: 6.895 min  
 Delta R.T.: 0.000 min  
 Response: 5678301  
 Conc: 80.04 ng/ml

Instrument :  
 ECD\_R  
 ClientSampleId :



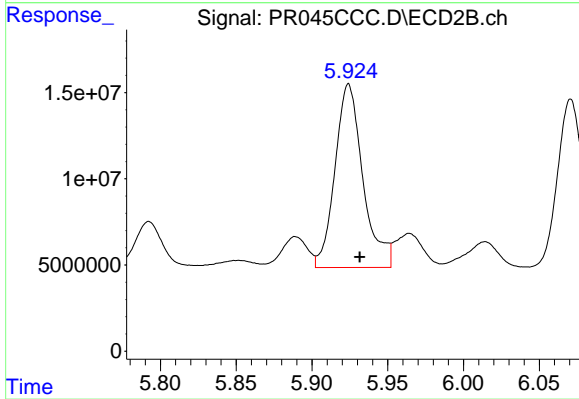
#25 AR-1248-5

R.T.: 5.964 min  
 Delta R.T.: -0.009 min  
 Response: 25189909  
 Conc: 47.97 ng/ml



#26 AR-1254-1

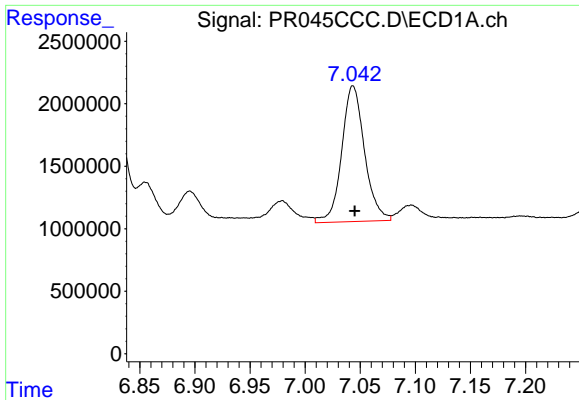
R.T.: 6.827 min  
 Delta R.T.: 0.000 min  
 Response: 17169367  
 Conc: 250.03 ng/ml



#26 AR-1254-1

R.T.: 5.924 min  
 Delta R.T.: -0.007 min  
 Response: 136367046  
 Conc: 181.38 ng/ml

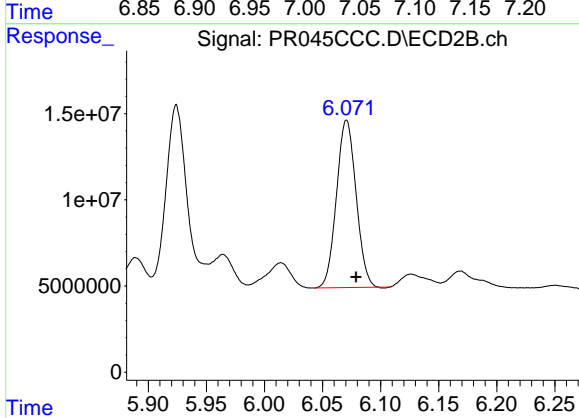




#27 AR-1254-2

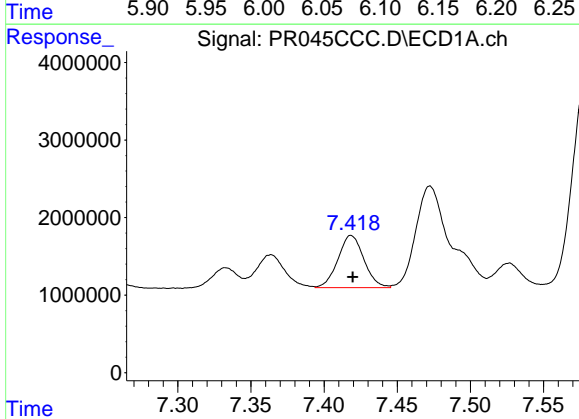
R.T.: 7.043 min  
 Delta R.T.: -0.002 min  
 Response: 15680346  
 Conc: 145.62 ng/ml

Instrument :  
 ECD\_R  
 ClientSampleId :



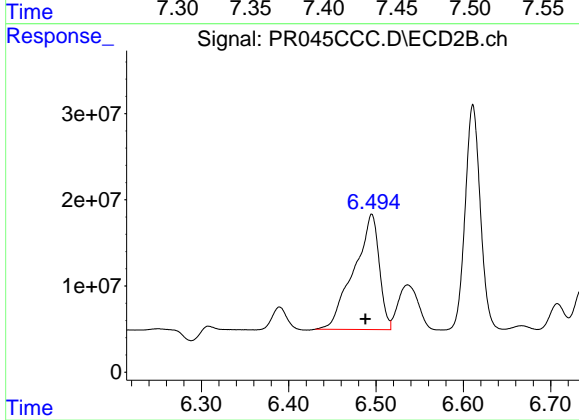
#27 AR-1254-2

R.T.: 6.071 min  
 Delta R.T.: -0.008 min  
 Response: 114010530  
 Conc: 176.47 ng/ml



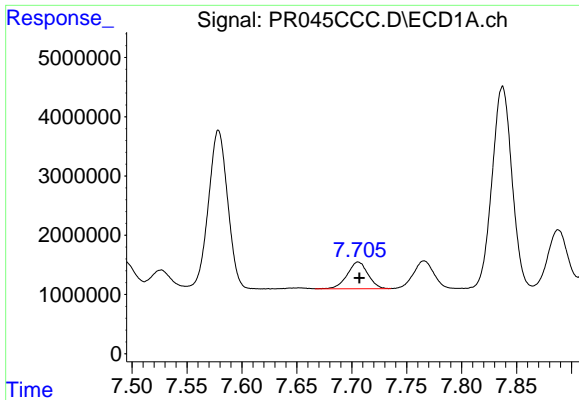
#28 AR-1254-3

R.T.: 7.418 min  
 Delta R.T.: -0.001 min  
 Response: 8310690  
 Conc: 70.11 ng/ml



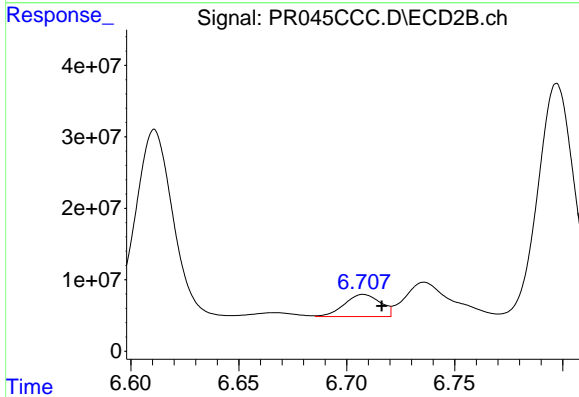
#28 AR-1254-3

R.T.: 6.495 min  
 Delta R.T.: 0.007 min  
 Response: 269265031  
 Conc: 246.78 ng/ml

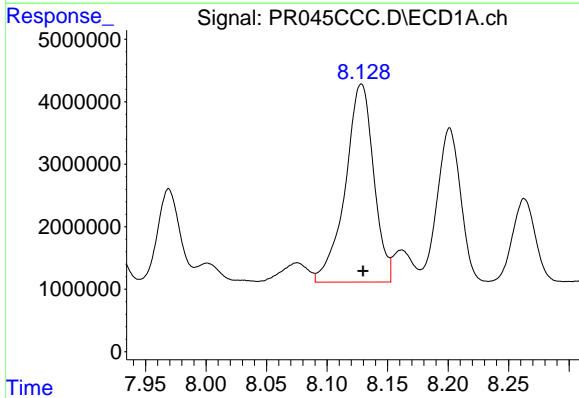


#29 AR-1254-4  
 R.T.: 7.706 min  
 Delta R.T.: -0.001 min  
 Response: 5890351  
 Conc: 65.38 ng/ml

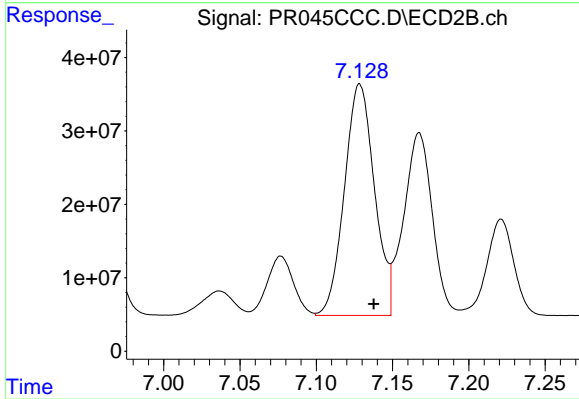
Instrument :  
 ECD\_R  
 ClientSampleId :



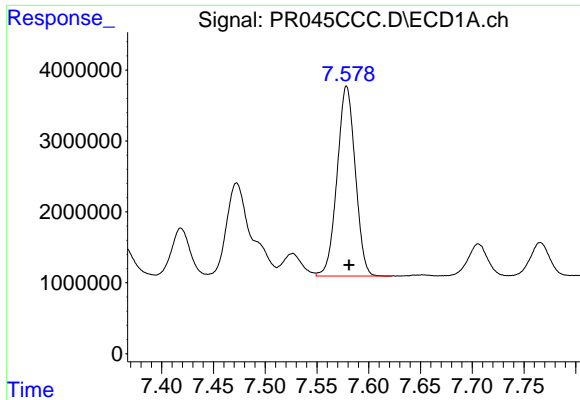
#29 AR-1254-4  
 R.T.: 6.708 min  
 Delta R.T.: -0.008 min  
 Response: 35780337  
 Conc: 50.34 ng/ml



#30 AR-1254-5  
 R.T.: 8.128 min  
 Delta R.T.: -0.001 min  
 Response: 51801825  
 Conc: 527.02 ng/ml

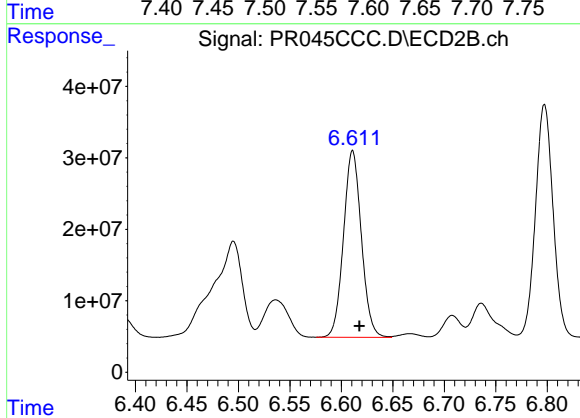


#30 AR-1254-5  
 R.T.: 7.129 min  
 Delta R.T.: -0.009 min  
 Response: 432361921  
 Conc: 462.98 ng/ml

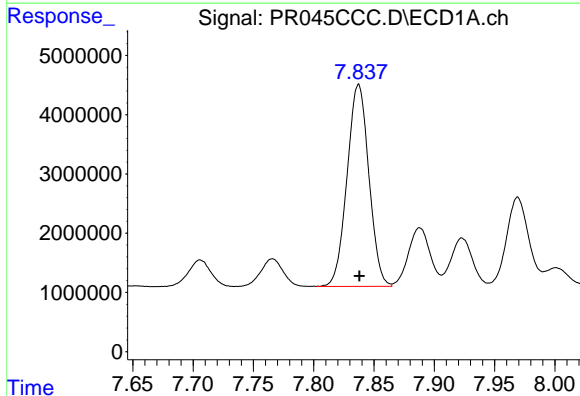


#31 AR-1260-1  
 R.T.: 7.579 min  
 Delta R.T.: -0.002 min  
 Response: 32679100  
 Conc: 386.83 ng/ml

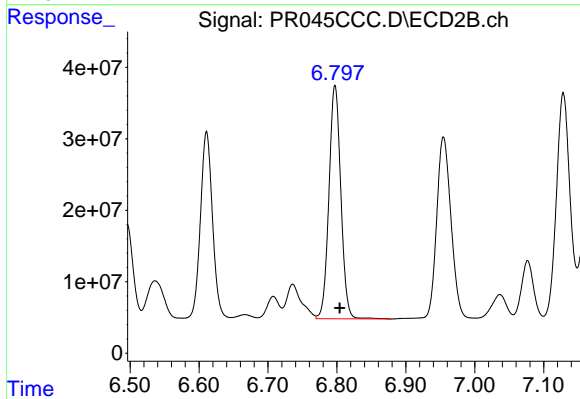
Instrument :  
 ECD\_R  
 ClientSampleId :



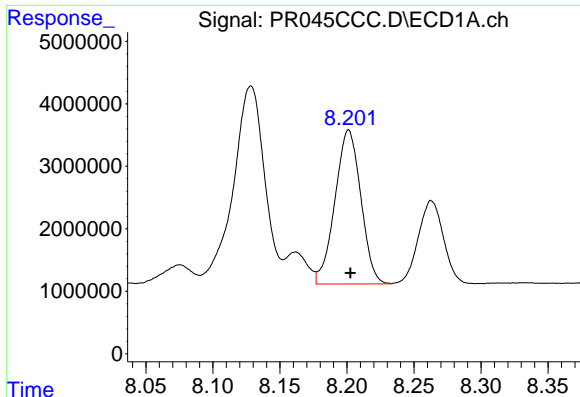
#31 AR-1260-1  
 R.T.: 6.611 min  
 Delta R.T.: -0.006 min  
 Response: 315641907  
 Conc: 468.53 ng/ml



#32 AR-1260-2  
 R.T.: 7.837 min  
 Delta R.T.: 0.000 min  
 Response: 42873044  
 Conc: 409.65 ng/ml



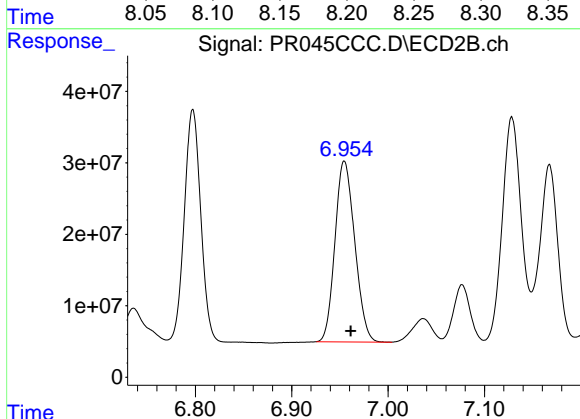
#32 AR-1260-2  
 R.T.: 6.797 min  
 Delta R.T.: -0.007 min  
 Response: 391749949  
 Conc: 484.64 ng/ml



#33 AR-1260-3

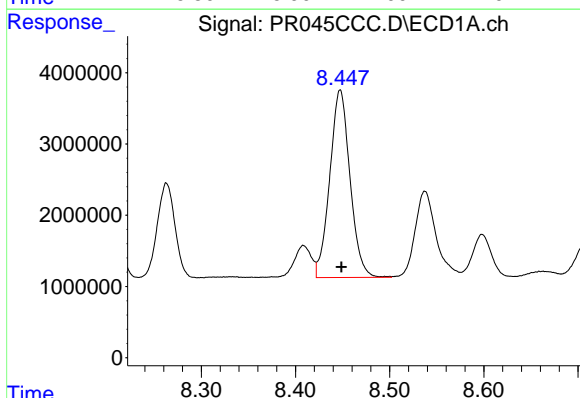
R.T.: 8.201 min  
 Delta R.T.: -0.001 min  
 Response: 33138656  
 Conc: 411.79 ng/ml

Instrument :  
 ECD\_R  
 ClientSampleId :



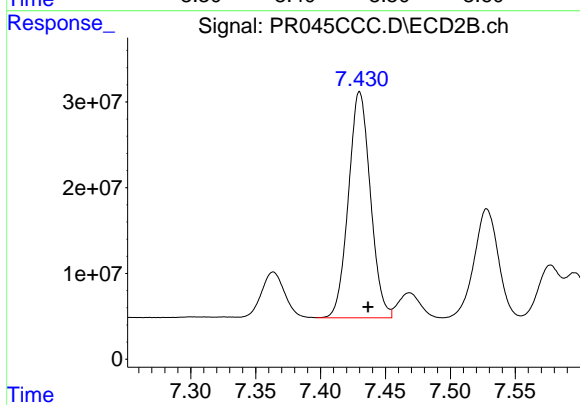
#33 AR-1260-3

R.T.: 6.955 min  
 Delta R.T.: -0.007 min  
 Response: 360551021  
 Conc: 471.29 ng/ml



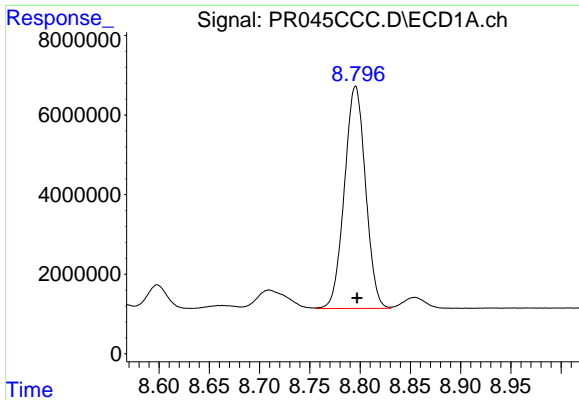
#34 AR-1260-4

R.T.: 8.447 min  
 Delta R.T.: -0.001 min  
 Response: 39348561  
 Conc: 407.28 ng/ml



#34 AR-1260-4

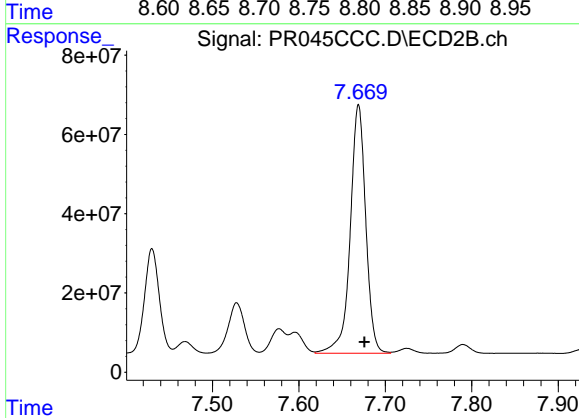
R.T.: 7.430 min  
 Delta R.T.: -0.006 min  
 Response: 310358474  
 Conc: 479.06 ng/ml



#35 AR-1260-5

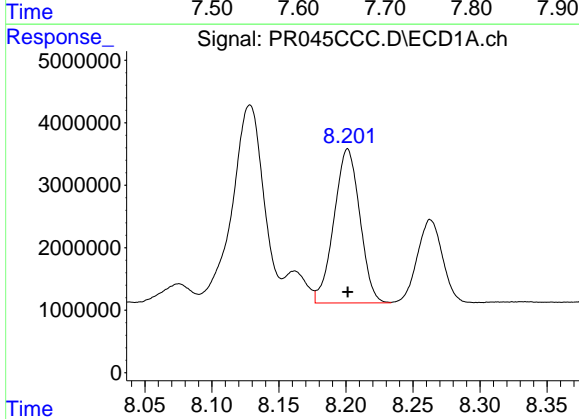
R.T.: 8.795 min  
 Delta R.T.: -0.002 min  
 Response: 81673455  
 Conc: 410.18 ng/ml

Instrument :  
 ECD\_R  
 ClientSampleId :



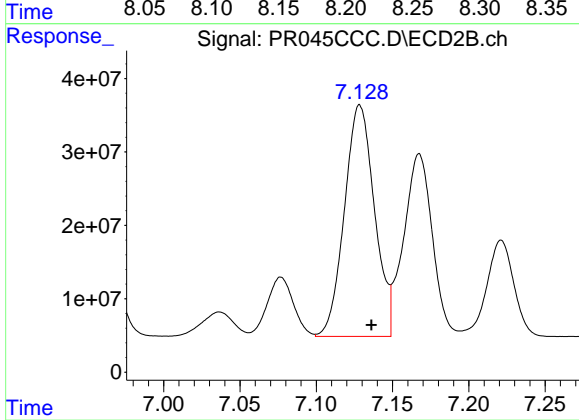
#35 AR-1260-5

R.T.: 7.669 min  
 Delta R.T.: -0.007 min  
 Response: 783602142  
 Conc: 485.24 ng/ml



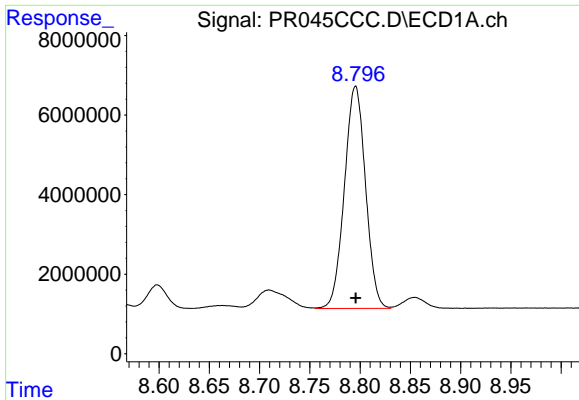
#36 AR-1262-1

R.T.: 8.201 min  
 Delta R.T.: 0.000 min  
 Response: 33138656  
 Conc: 289.35 ng/ml



#36 AR-1262-1

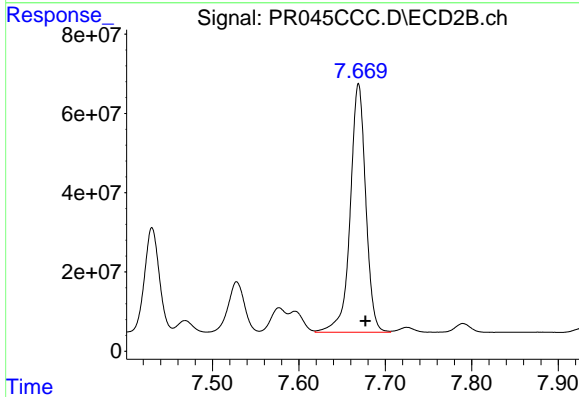
R.T.: 7.129 min  
 Delta R.T.: -0.008 min  
 Response: 432361921  
 Conc: 876.14 ng/ml



#37 AR-1262-2

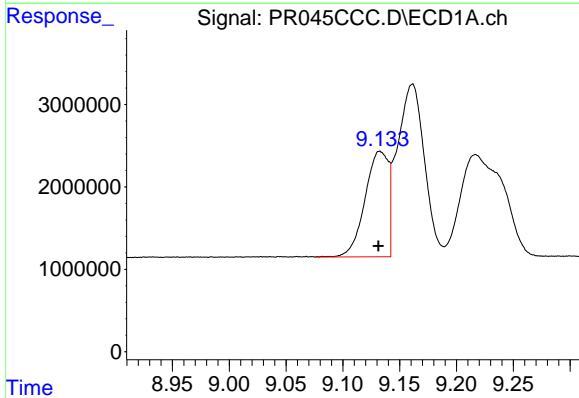
R.T.: 8.795 min  
 Delta R.T.: 0.000 min  
 Response: 81673455  
 Conc: 372.08 ng/ml

Instrument :  
 ECD\_R  
 ClientSampleId :



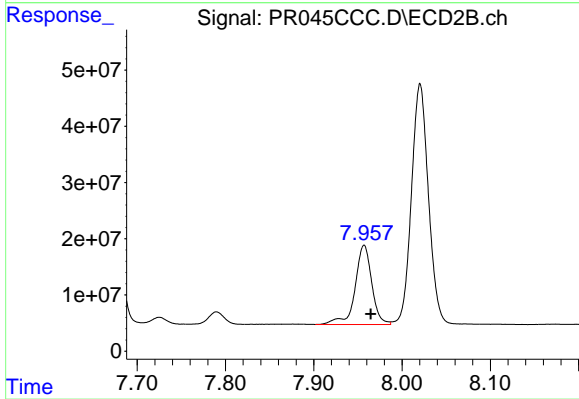
#37 AR-1262-2

R.T.: 7.669 min  
 Delta R.T.: -0.008 min  
 Response: 783602142  
 Conc: 433.96 ng/ml



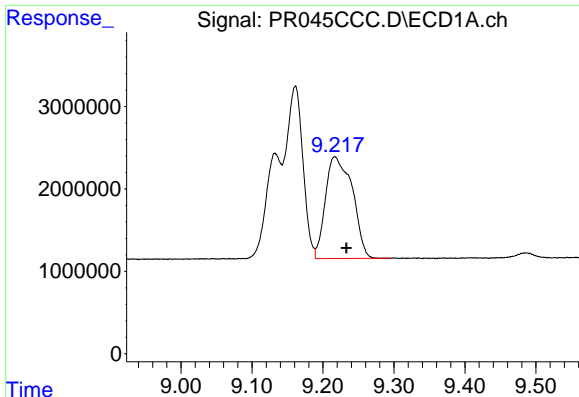
#38 AR-1262-3

R.T.: 9.133 min  
 Delta R.T.: 0.001 min  
 Response: 18284041  
 Conc: 191.20 ng/ml



#38 AR-1262-3

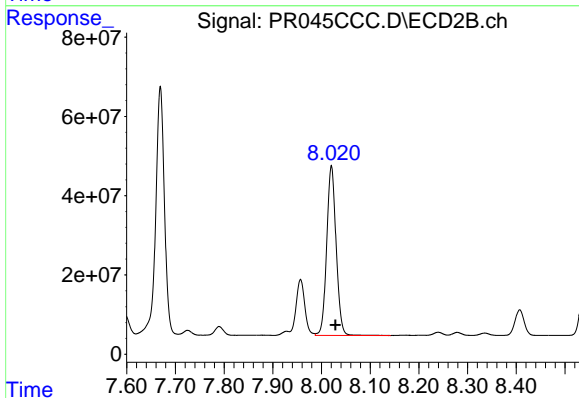
R.T.: 7.957 min  
 Delta R.T.: -0.008 min  
 Response: 185282100  
 Conc: 274.44 ng/ml



#39 AR-1262-4

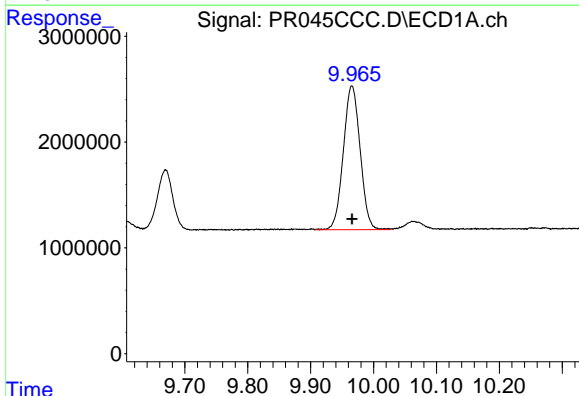
R.T.: 9.217 min  
 Delta R.T.: -0.016 min  
 Response: 32589272  
 Conc: 296.37 ng/ml

Instrument :  
 ECD\_R  
 ClientSampleId :



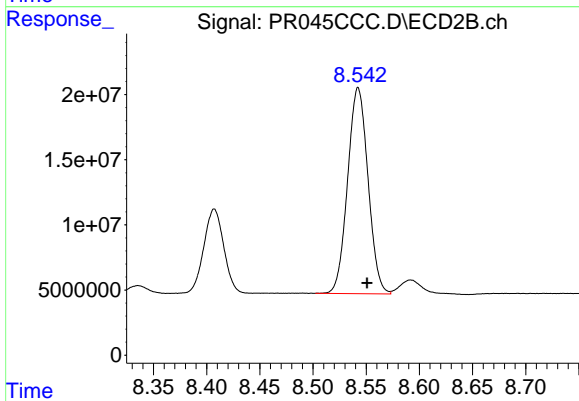
#39 AR-1262-4

R.T.: 8.020 min  
 Delta R.T.: -0.008 min  
 Response: 575917878  
 Conc: 445.78 ng/ml



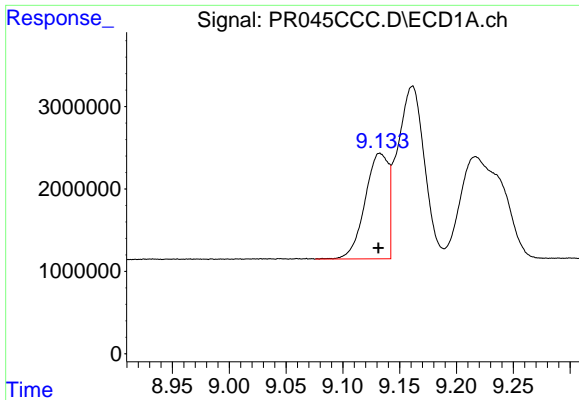
#40 AR-1262-5

R.T.: 9.966 min  
 Delta R.T.: 0.000 min  
 Response: 25169580  
 Conc: 311.54 ng/ml



#40 AR-1262-5

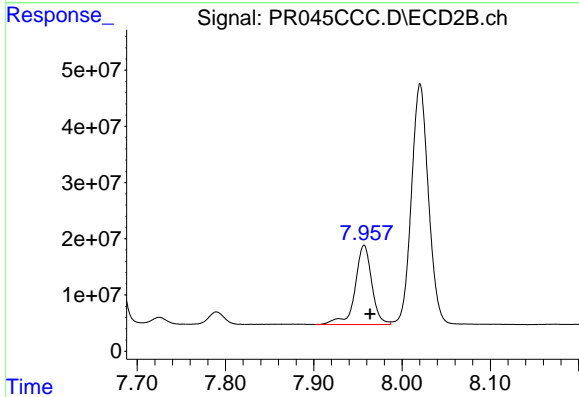
R.T.: 8.542 min  
 Delta R.T.: -0.008 min  
 Response: 211183883  
 Conc: 348.34 ng/ml



#41 AR-1268-1

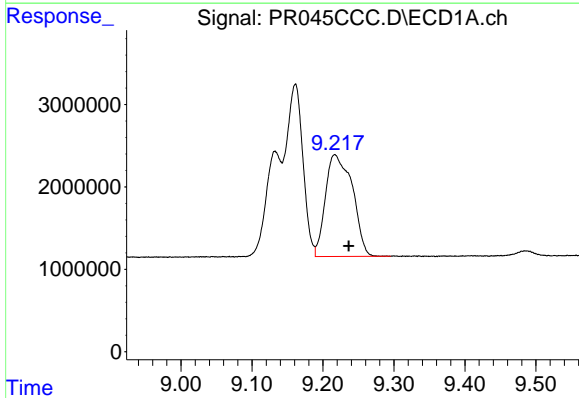
R.T.: 9.133 min  
 Delta R.T.: 0.001 min  
 Response: 18284041  
 Conc: 70.05 ng/ml

Instrument :  
 ECD\_R  
 ClientSampled :



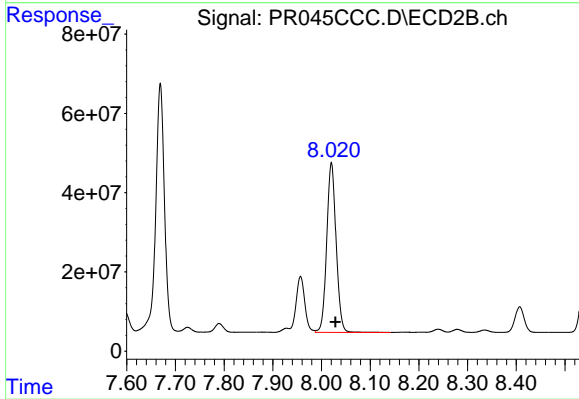
#41 AR-1268-1

R.T.: 7.957 min  
 Delta R.T.: -0.007 min  
 Response: 185282100  
 Conc: 91.21 ng/ml



#42 AR-1268-2

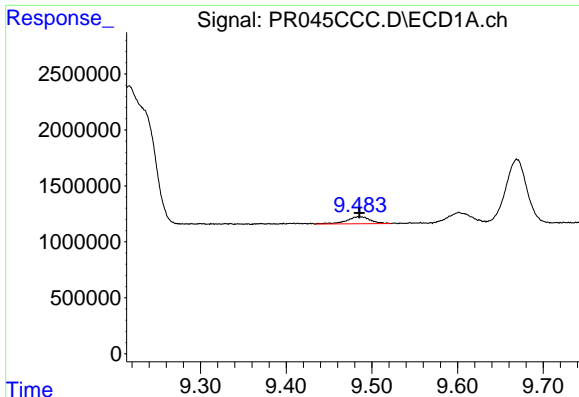
R.T.: 9.217 min  
 Delta R.T.: -0.020 min  
 Response: 32589272  
 Conc: 135.10 ng/ml



#42 AR-1268-2

R.T.: 8.020 min  
 Delta R.T.: -0.008 min  
 Response: 575917878  
 Conc: 299.07 ng/ml

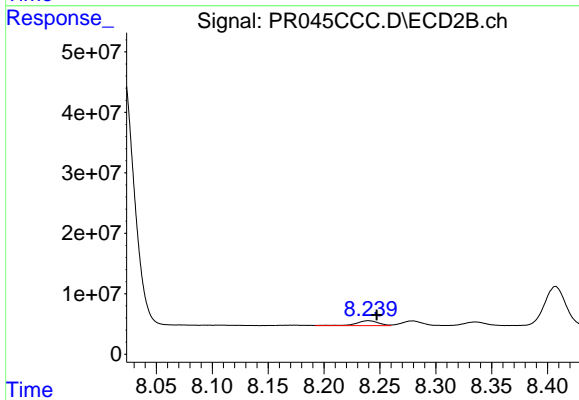




#43 AR-1268-3

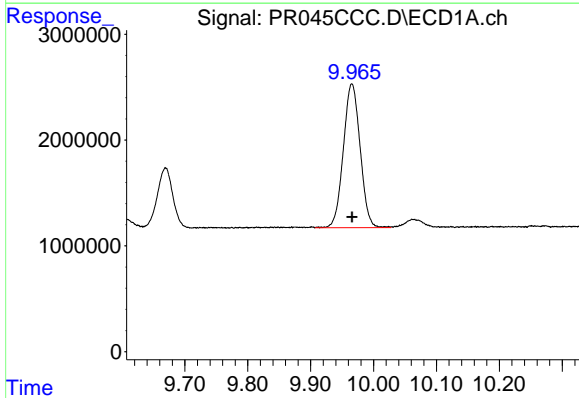
R.T.: 9.485 min  
 Delta R.T.: 0.000 min  
 Response: 1215734  
 Conc: 6.08 ng/ml

Instrument :  
 ECD\_R  
 ClientSampleId :



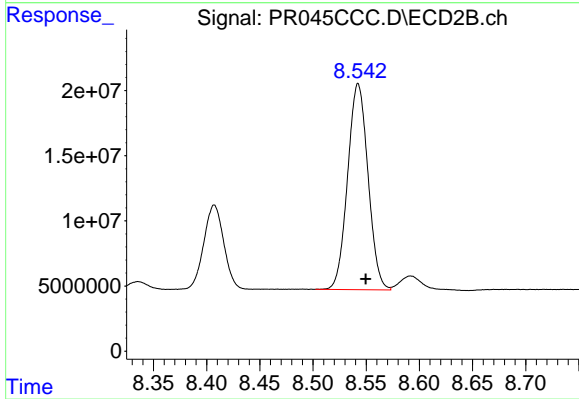
#43 AR-1268-3

R.T.: 8.240 min  
 Delta R.T.: -0.007 min  
 Response: 11147501  
 Conc: 7.04 ng/ml



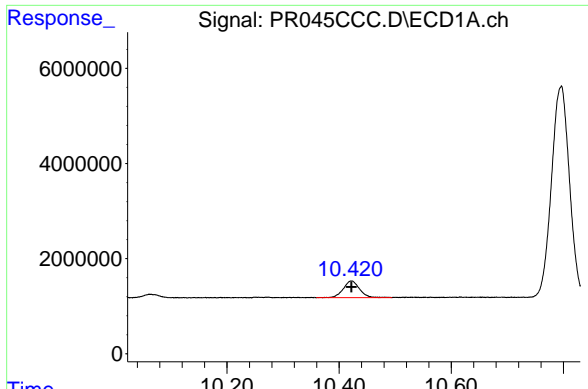
#44 AR-1268-4

R.T.: 9.966 min  
 Delta R.T.: 0.000 min  
 Response: 25169580  
 Conc: 276.08 ng/ml



#44 AR-1268-4

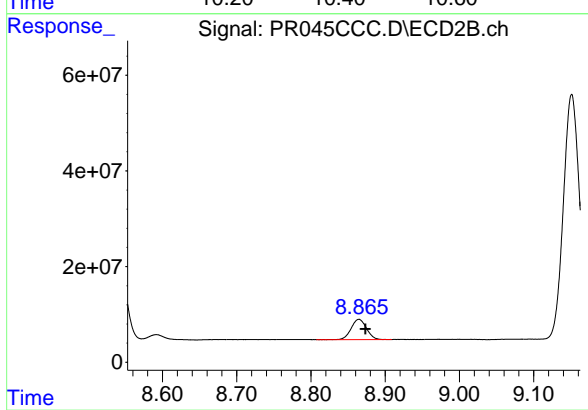
R.T.: 8.542 min  
 Delta R.T.: -0.007 min  
 Response: 211183883  
 Conc: 305.54 ng/ml



#45 AR-1268-5

R.T.: 10.422 min  
Delta R.T.: 0.000 min  
Response: 7083158  
Conc: 10.12 ng/ml

Instrument :  
ECD\_R  
ClientSampleId :



#45 AR-1268-5

R.T.: 8.865 min  
Delta R.T.: -0.009 min  
Response: 60411750  
Conc: 11.99 ng/ml