

Data Path : Z:\pestpcbsrv\HPCHEM1\ECD_R\Data\PR052722\
 Data File : PR054466.D
 Signal(s) : Signal #1: ECD1A.ch Signal #2: ECD2B.ch
 Acq On : 27 May 2022 09:03
 Operator : AJ\MA
 Sample : N2985-19MS
 Misc :
 ALS Vial : 5 Sample Multiplier: 1

Instrument :
 ECD_R
 ClientSampleId :
 P021-SS007-0006-01MS

Integration File signal 1: autoint1.e
 Integration File signal 2: autoint2.e
 Quant Time: May 27 23:25:06 2022
 Quant Method : Z:\pestpcbsrv\HPCHEM1\ECD_R\Method\PR052522.M
 Quant Title : GC EXTRACTABLES
 QLast Update : Wed May 25 15:27:54 2022
 Response via : Initial Calibration
 Integrator: ChemStation

Volume Inj. : 2 µl
 Signal #1 Phase : ZB-MR2 Signal #2 Phase: ZB-MR2
 Signal #1 Info : 30Mx0.32mmx 0.50µ Signal #2 Info : 30M x 0.32mm x 0.25µm

Compound	RT#1	RT#2	Resp#1	Resp#2	ng/ml	ng/ml

System Monitoring Compounds						
1) SA Tetrachlo...	3.647	2.920	78738809	38436749	21.347	20.348
2) SA Decachlor...	9.534	8.156	32048854	29690943	20.977	20.617
Target Compounds						
3) L1 AR-1016-1	4.868	4.033	59893989	32785479	477.657	529.033
4) L1 AR-1016-2	4.890	4.051	85301128	45323982	495.867	526.265
5) L1 AR-1016-3	4.954	4.228	52450693	23462077	498.374	520.397
6) L1 AR-1016-4	5.056	4.279	42520939	18562921	496.774	508.102
7) L1 AR-1016-5	5.372	4.495	41191309	23645508	495.957	510.584
31) L7 AR-1260-1	6.583	5.581	73049161	66967306	635.731	818.640 #
32) L7 AR-1260-2	6.865	5.785	136.6E6	140.4E6	1050.254	1422.769 #
33) L7 AR-1260-3	7.255	5.943	115.1E6	91721424	1234.251	1004.547
34) L7 AR-1260-4	7.497	6.447	139.8E6	104.0E6	1328.721	1354.647
35) L7 AR-1260-5	7.835	6.711	255.5E6	320.1E6	1357.648	1795.174 #

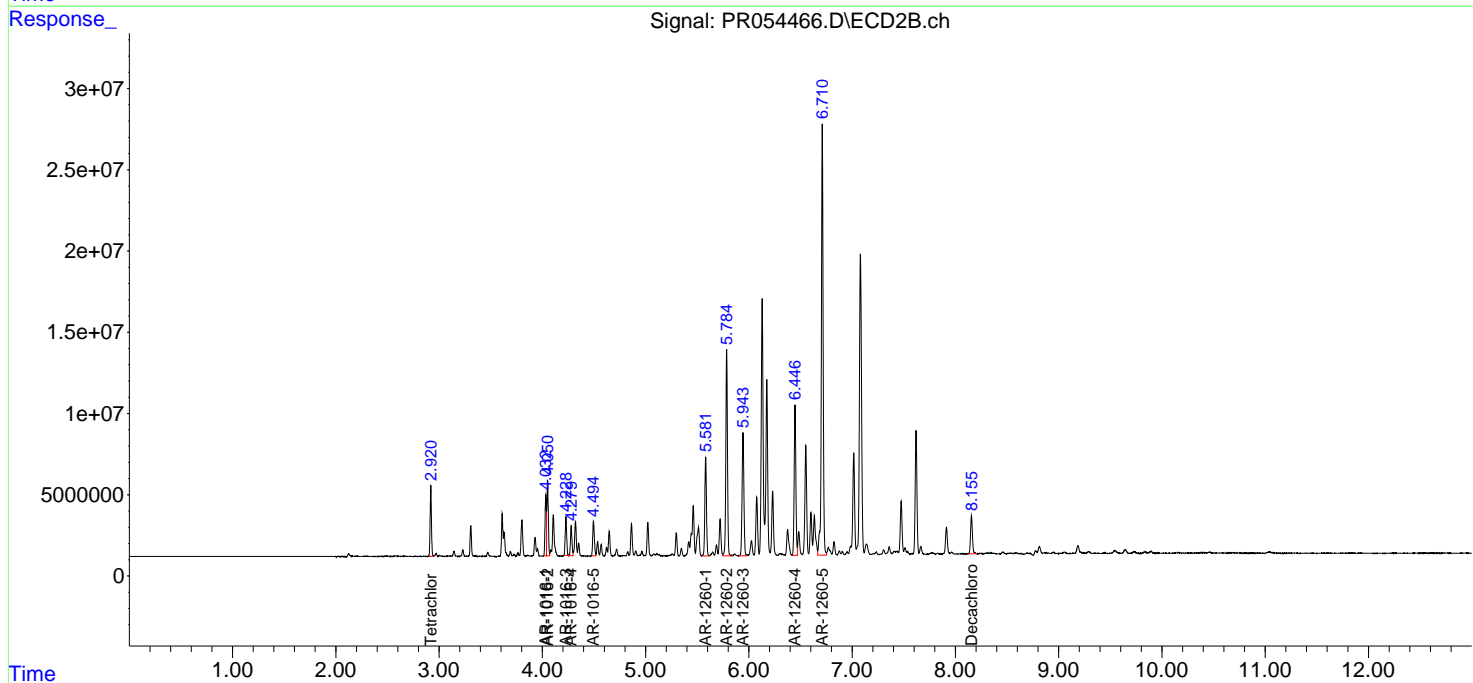
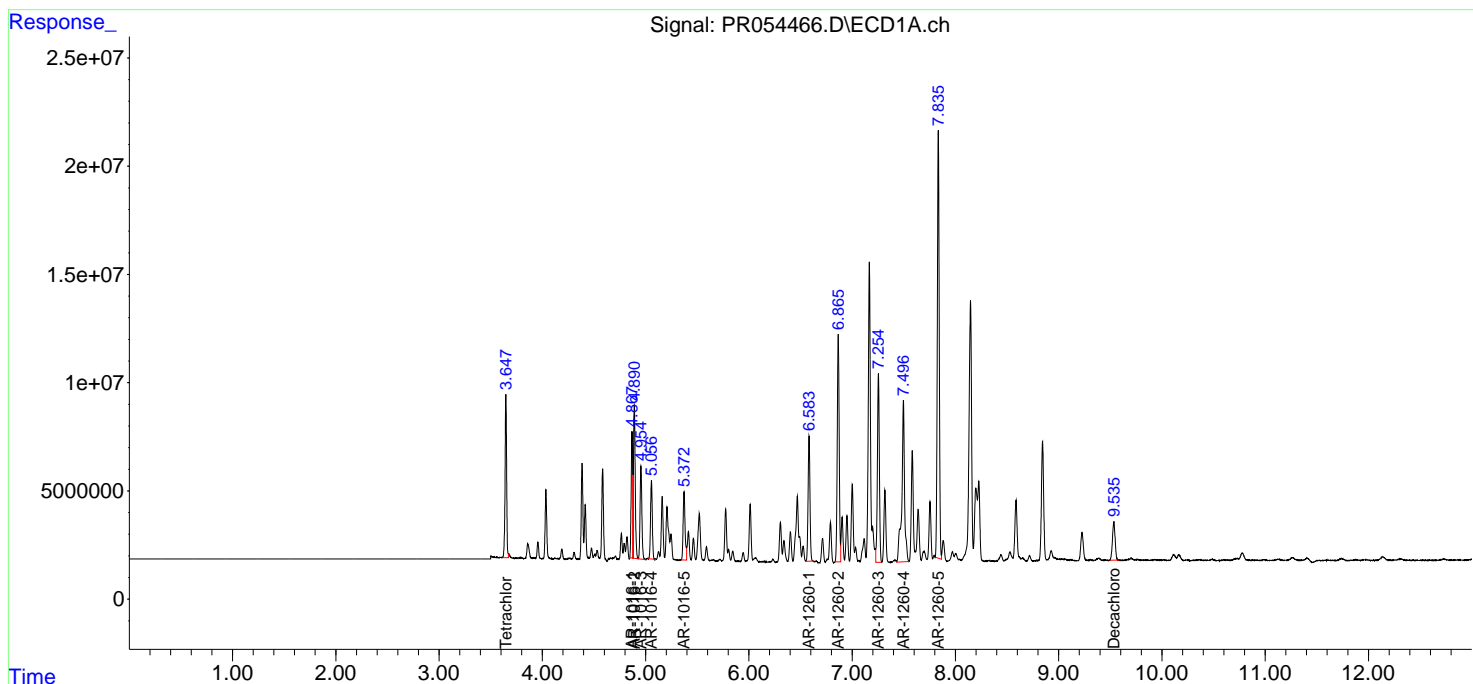
(f)=RT Delta > 1/2 Window (#)=Amounts differ by > 25% (m)=manual int.

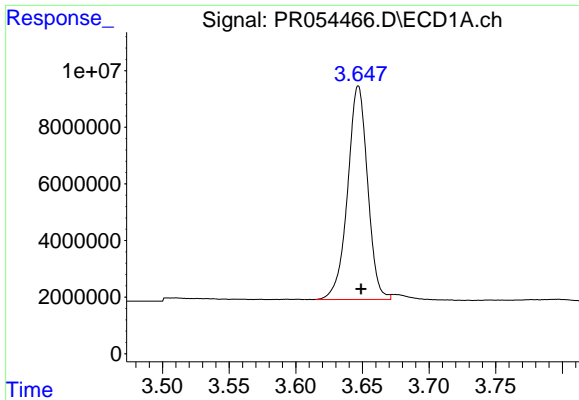
Data Path : Z:\pestpcbsrv\HPCHEM1\ECD_R\Data\PR052722\
 Data File : PR054466.D
 Signal(s) : Signal #1: ECD1A.ch Signal #2: ECD2B.ch
 Acq On : 27 May 2022 09:03
 Operator : AJ\MA
 Sample : N2985-19MS
 Misc :
 ALS Vial : 5 Sample Multiplier: 1

Instrument :
 ECD_R
 ClientSampleId :
 P021-SS007-0006-01MS

Integration File signal 1: autoint1.e
 Integration File signal 2: autoint2.e
 Quant Time: May 27 23:25:06 2022
 Quant Method : Z:\pestpcbsrv\HPCHEM1\ECD_R\Method\PR052522.M
 Quant Title : GC EXTRACTABLES
 QLast Update : Wed May 25 15:27:54 2022
 Response via : Initial Calibration
 Integrator: ChemStation

Volume Inj. : 2 µl
 Signal #1 Phase : ZB-MR1 Signal #2 Phase: ZB-MR2
 Signal #1 Info : 30Mx0.32mmx 0.50µ Signal #2 Info : 30M x 0.32mm x 0.25µm

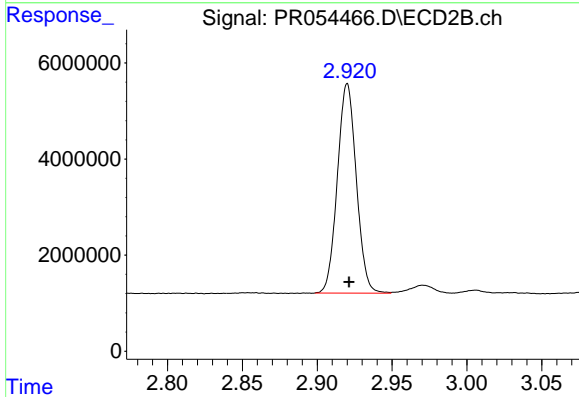




#1 Tetrachloro-m-xylene

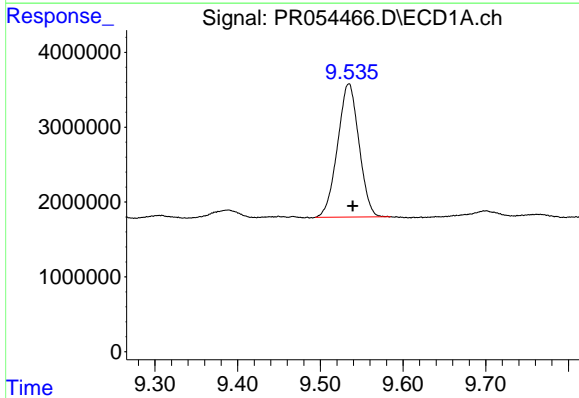
R.T.: 3.647 min
 Delta R.T.: -0.002 min
 Response: 78738809
 Conc: 21.35 ng/ml

Instrument :
 ECD_R
 ClientSampleId :
 P021-SS007-0006-01MS



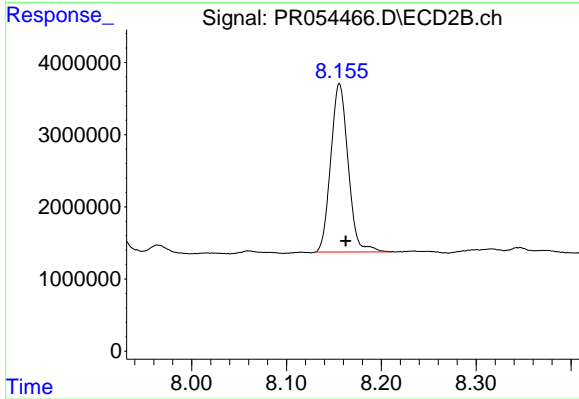
#1 Tetrachloro-m-xylene

R.T.: 2.920 min
 Delta R.T.: -0.001 min
 Response: 38436749
 Conc: 20.35 ng/ml



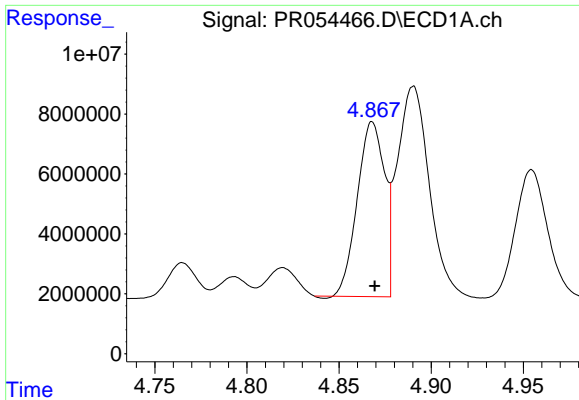
#2 Decachlorobiphenyl

R.T.: 9.534 min
 Delta R.T.: -0.005 min
 Response: 32048854
 Conc: 20.98 ng/ml



#2 Decachlorobiphenyl

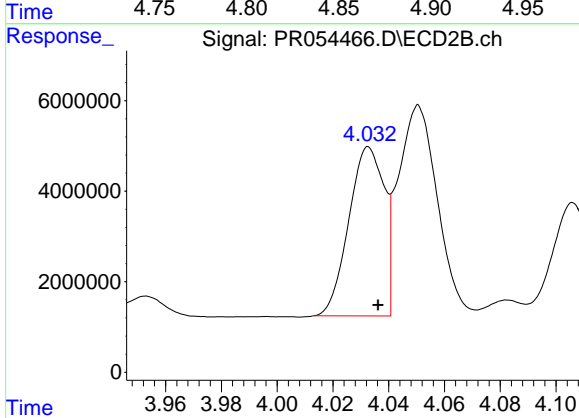
R.T.: 8.156 min
 Delta R.T.: -0.007 min
 Response: 29690943
 Conc: 20.62 ng/ml



#3 AR-1016-1

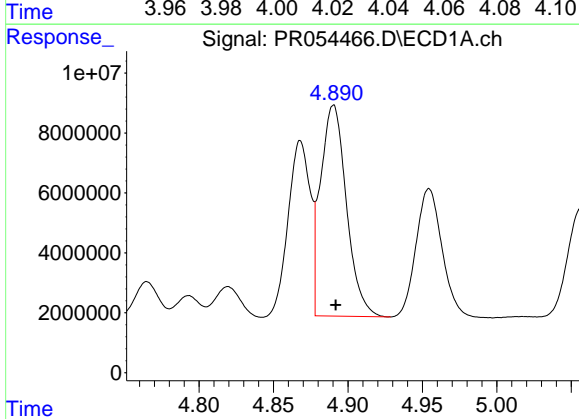
R.T.: 4.868 min
 Delta R.T.: -0.001 min
 Response: 59893989
 Conc: 477.66 ng/ml

Instrument :
 ECD_R
 ClientSampleId :
 P021-SS007-0006-01MS



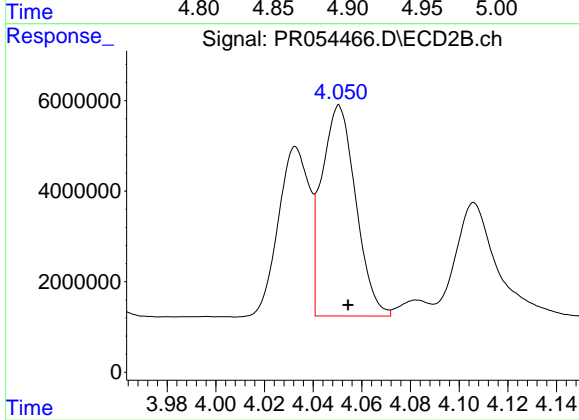
#3 AR-1016-1

R.T.: 4.033 min
 Delta R.T.: -0.003 min
 Response: 32785479
 Conc: 529.03 ng/ml



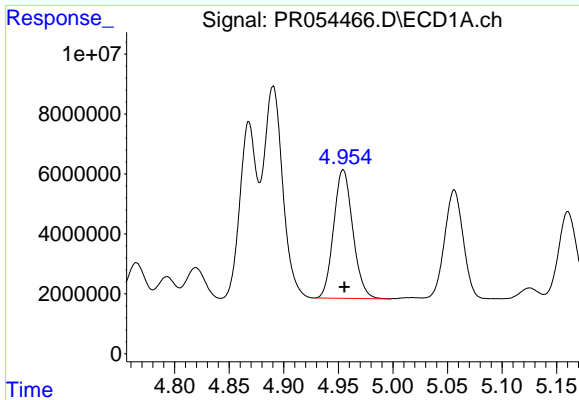
#4 AR-1016-2

R.T.: 4.890 min
 Delta R.T.: -0.001 min
 Response: 85301128
 Conc: 495.87 ng/ml



#4 AR-1016-2

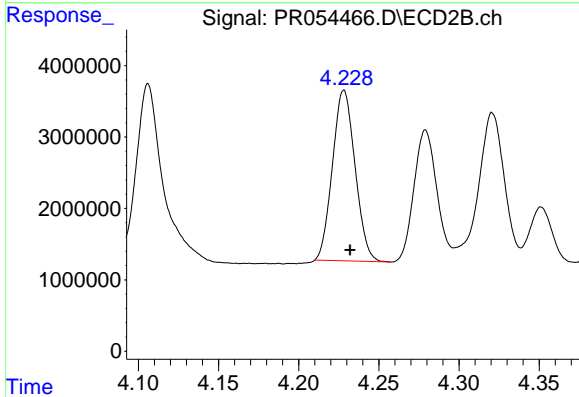
R.T.: 4.051 min
 Delta R.T.: -0.004 min
 Response: 45323982
 Conc: 526.27 ng/ml



#5 AR-1016-3

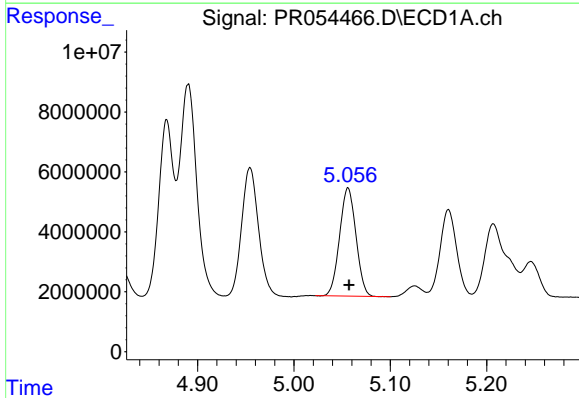
R.T.: 4.954 min
 Delta R.T.: -0.001 min
 Response: 52450693
 Conc: 498.37 ng/ml

Instrument :
 ECD_R
 ClientSampleId :
 P021-SS007-0006-01MS



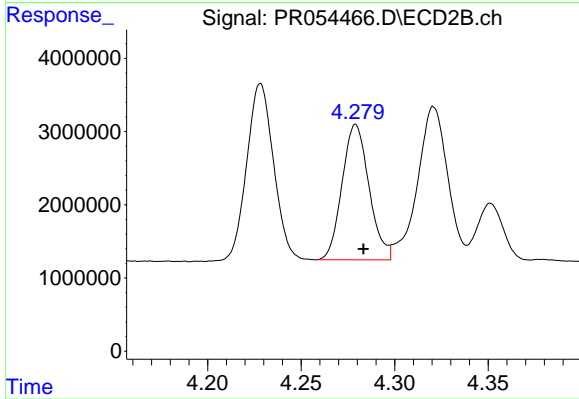
#5 AR-1016-3

R.T.: 4.228 min
 Delta R.T.: -0.004 min
 Response: 23462077
 Conc: 520.40 ng/ml



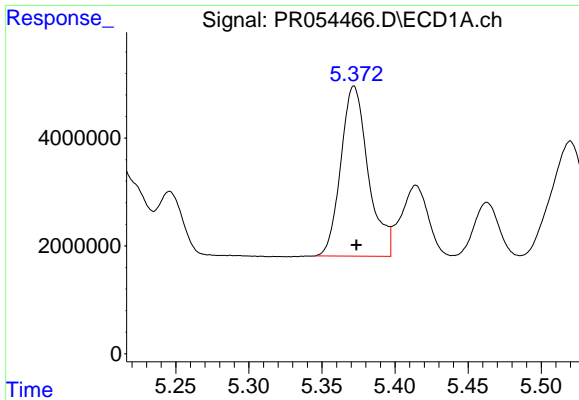
#6 AR-1016-4

R.T.: 5.056 min
 Delta R.T.: 0.000 min
 Response: 42520939
 Conc: 496.77 ng/ml



#6 AR-1016-4

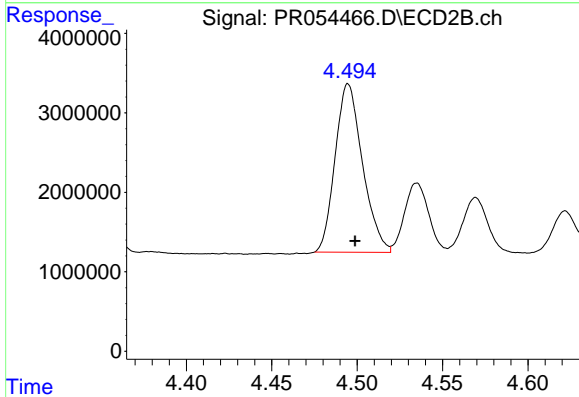
R.T.: 4.279 min
 Delta R.T.: -0.004 min
 Response: 18562921
 Conc: 508.10 ng/ml



#7 AR-1016-5

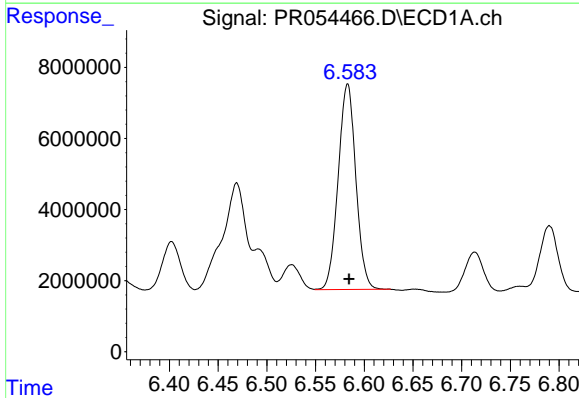
R.T.: 5.372 min
 Delta R.T.: -0.002 min
 Response: 41191309
 Conc: 495.96 ng/ml

Instrument :
 ECD_R
 ClientSampleId :
 P021-SS007-0006-01MS



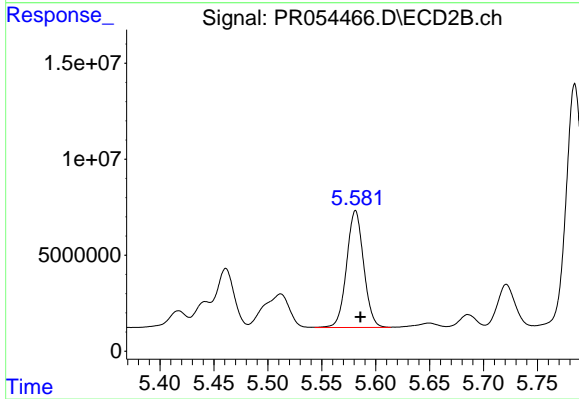
#7 AR-1016-5

R.T.: 4.495 min
 Delta R.T.: -0.004 min
 Response: 23645508
 Conc: 510.58 ng/ml



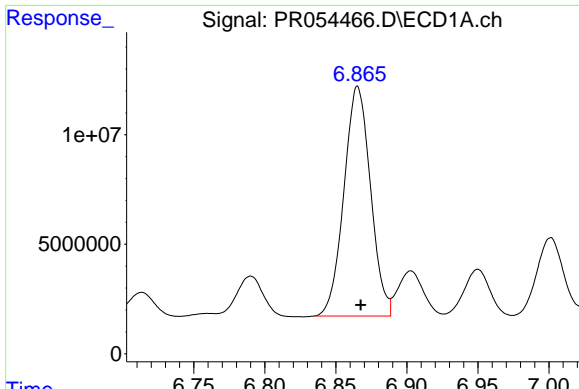
#31 AR-1260-1

R.T.: 6.583 min
 Delta R.T.: -0.001 min
 Response: 73049161
 Conc: 635.73 ng/ml



#31 AR-1260-1

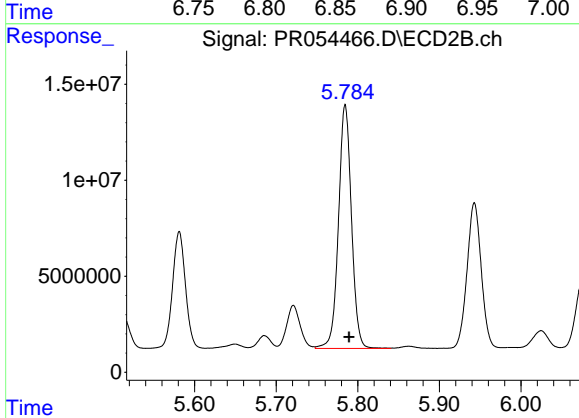
R.T.: 5.581 min
 Delta R.T.: -0.004 min
 Response: 66967306
 Conc: 818.64 ng/ml



#32 AR-1260-2

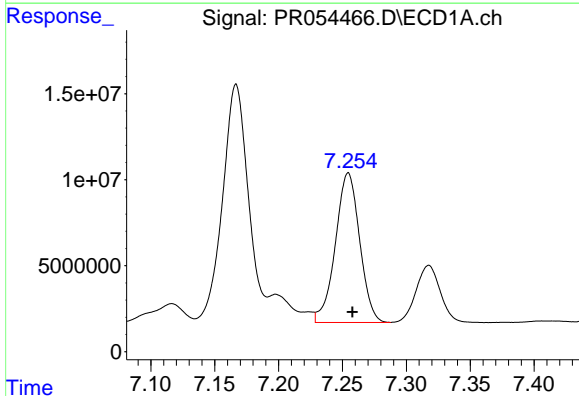
R.T.: 6.865 min
Delta R.T.: -0.002 min
Response: 136594543
Conc: 1050.25 ng/m

Instrument :
ECD_R
ClientSampleId :
P021-SS007-0006-01MS



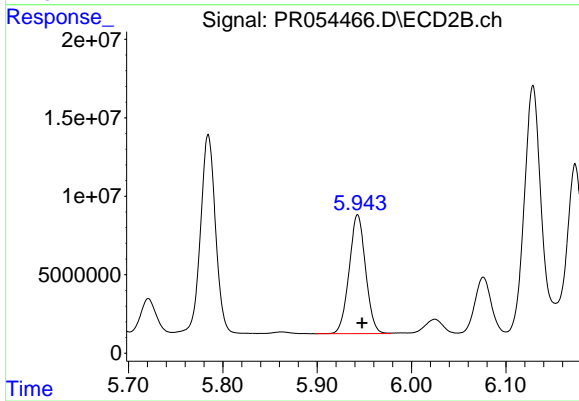
#32 AR-1260-2

R.T.: 5.785 min
Delta R.T.: -0.005 min
Response: 140370144
Conc: 1422.77 ng/ml



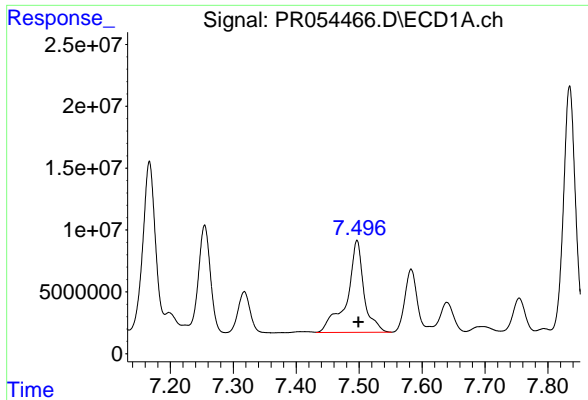
#33 AR-1260-3

R.T.: 7.255 min
Delta R.T.: -0.003 min
Response: 115071450
Conc: 1234.25 ng/ml



#33 AR-1260-3

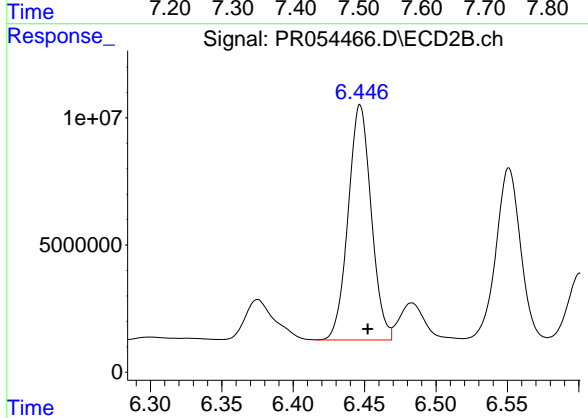
R.T.: 5.943 min
Delta R.T.: -0.005 min
Response: 91721424
Conc: 1004.55 ng/ml



#34 AR-1260-4

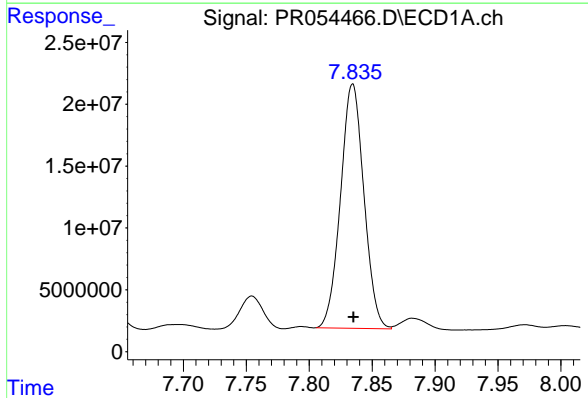
R.T.: 7.497 min
 Delta R.T.: -0.002 min
 Response: 139819111
 Conc: 1328.72 ng/ml

Instrument : ECD_R
 ClientSampleId : P021-SS007-0006-01MS



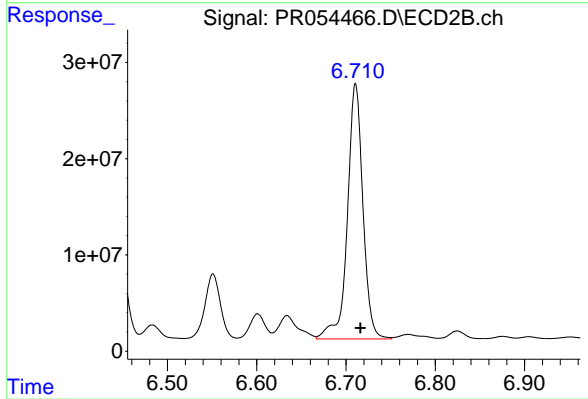
#34 AR-1260-4

R.T.: 6.447 min
 Delta R.T.: -0.005 min
 Response: 103975731
 Conc: 1354.65 ng/ml



#35 AR-1260-5

R.T.: 7.835 min
 Delta R.T.: 0.000 min
 Response: 255504994
 Conc: 1357.65 ng/ml



#35 AR-1260-5

R.T.: 6.711 min
 Delta R.T.: -0.005 min
 Response: 320086343
 Conc: 1795.17 ng/ml