

Data Path : Z:\pestpcbsrv\HPCHEM1\ECD\_R\Data\PR052824\  
 Data File : PR067071.D  
 Signal(s) : Signal #1: ECD1A.ch Signal #2: ECD2B.ch  
 Acq On : 28 May 2024 11:18  
 Operator : AJ\MA  
 Sample : AIBLK268  
 Misc :  
 ALS Vial : 2 Sample Multiplier: 1

Instrument :  
 ECD\_R  
 ClientSampleId :  
 AIBLK990

Integration File signal 1: autoint1.e  
 Integration File signal 2: autoint2.e  
 Quant Time: May 29 02:03:03 2024  
 Quant Method : Z:\pestpcbsrv\HPCHEM1\ECD\_R\Method\PR052124CLP.M  
 Quant Title : GC EXTRACTABLES  
 QLast Update : Wed May 22 04:28:16 2024  
 Response via : Initial Calibration  
 Integrator: ChemStation

Volume Inj. : 1 µl  
 Signal #1 Phase : ZB MR1 Signal #2 Phase: ZB MR2  
 Signal #1 Info : 30Mx0.32mmx 0.5µm Signal #2 Info : 30M x 0.32mm x 0.25µm

Compound	RT#1	RT#2	Resp#1	Resp#2	ng/ml	ng/ml
-----						
System Monitoring Compounds						
1) SA Tetrachlo...	3.652	2.892	112.9E6	92222217	18.400	19.807
2) SA Decachlor...	9.535	8.118	53971659	78850492	41.566	35.415
Target Compounds						
3) L1 AR-1016-1	4.887	4.032	1069052	528783	6.665	3.522 #
4) L1 AR-1016-2	4.887	4.032	1069052	528783	4.164	2.386 #
5) L1 AR-1016-3	0.000	4.211	0	264746	N.D.	2.149 #
6) L1 AR-1016-4	5.069	4.266	-20035	518053	N.D.	4.960 #
7) L1 AR-1016-5	5.414f	4.463	351819	917303	2.607	6.926 #
8) L2 AR-1221-1	3.877	3.133	439021	113557	6.728	2.045 #
9) L2 AR-1221-2	3.962	3.191	1547515	1251442	33.156	31.264
10) L2 AR-1221-3	4.015	3.281	453015	401132	3.003	3.179
11) L3 AR-1232-1	4.015	3.281	453015	401132	3.570	3.748
12) L3 AR-1232-2	4.597	4.032	488808	528783	6.880	5.104 #
13) L3 AR-1232-3	4.887	4.211	1069052	264746	9.356	4.788 #
14) L3 AR-1232-4	5.069	4.289	-20035	76235	N.D.	1.491 #
15) L3 AR-1232-5	5.208f	4.463	2353268	917303	52.878	16.562 #
16) L4 AR-1242-1	4.887	4.032	1069052	528783	8.667	4.452 #
17) L4 AR-1242-2	4.887	4.032	1069052	528783	5.440	2.981 #
18) L4 AR-1242-3	0.000	4.211	0	264746	N.D.	2.695 #
19) L4 AR-1242-4	5.069	4.289	-20035	76235	N.D.	0.770 #
20) L4 AR-1242-5	5.836	4.819	668724	2066456	6.356	17.538 #
21) L5 AR-1248-1	4.887	4.032	1069052	528783	11.764	5.848 #
22) L5 AR-1248-2	5.208f	4.266	2353268	518053	15.808	3.707 #
23) L5 AR-1248-3	5.414f	4.289	351819	76235	2.060	0.545 #
24) L5 AR-1248-4	5.806	4.463	184205	917303	1.168	5.475 #
25) L5 AR-1248-5	5.836	4.819f	668724	2066456	3.755	13.375 #
26) L6 AR-1254-1	5.779	4.819	1070128	2066456	5.614	8.460 #
27) L6 AR-1254-2	6.018	4.962	5146656	111827	18.337	0.517 #
28) L6 AR-1254-3	6.387	5.386	1276497	613206	4.762	1.803 #
29) L6 AR-1254-4	6.696	5.659	939980	1011661	5.835	5.155
30) L6 AR-1254-5	7.183	6.159f	394536	952851	2.055	3.094 #
31) L7 AR-1260-1	6.584	5.576	298283	2452783	1.223	9.414 #
32) L7 AR-1260-2	6.863	5.764	448787	279706	1.733	0.912 #
33) L7 AR-1260-3	7.256	5.922	295184	1280629	1.486	4.369 #
34) L7 AR-1260-4	7.508	6.373f	1166328	528931	5.584	2.115 #
35) L7 AR-1260-5	7.839	6.732f	800748	4462079	2.339	8.174 #
36) L8 AR-1262-1	7.256	6.159	295184	952851	1.141	2.875 #
37) L8 AR-1262-2	7.839	6.732f	800748	4462079	2.309	8.017 #
38) L8 AR-1262-3	0.000	6.970	0	1178745	N.D.	4.939 #
39) L8 AR-1262-4	8.216	7.060	365762	258982	2.026	0.607 #
40) L8 AR-1262-5	8.854	7.555	461526	194272	4.505	0.992 #
41) L9 AR-1268-1	8.063f	6.970	244377	1178745	0.589	1.771 #

Data Path : Z:\pestpcbsrv\HPCHEM1\ECD\_R\Data\PR052824\  
 Data File : PR067071.D  
 Signal(s) : Signal #1: ECD1A.ch Signal #2: ECD2B.ch  
 Acq On : 28 May 2024 11:18  
 Operator : AJ\MA  
 Sample : AIBLK268  
 Misc :  
 ALS Vial : 2 Sample Multiplier: 1

**Instrument :**  
 ECD\_R  
**ClientSampleId :**  
 AIBLK990

Integration File signal 1: autoint1.e  
 Integration File signal 2: autoint2.e  
 Quant Time: May 29 02:03:03 2024  
 Quant Method : Z:\pestpcbsrv\HPCHEM1\ECD\_R\Method\PR052124CLP.M  
 Quant Title : GC EXTRACTABLES  
 QLast Update : Wed May 22 04:28:16 2024  
 Response via : Initial Calibration  
 Integrator: ChemStation

Volume Inj. : 1 µl  
 Signal #1 Phase : ZB MR1 Signal #2 Phase: ZB MR2  
 Signal #1 Info : 30Mx0.32mmx 0.5µm Signal #2 Info : 30M x 0.32mm x 0.25µm

	Compound	RT#1	RT#2	Resp#1	Resp#2	ng/ml	ng/ml
42)	L9 AR-1268-2	8.216	7.060	365762	258982	0.987	0.425 #
43)	L9 AR-1268-3	8.435	7.269	797131	1135959	2.450	2.124
44)	L9 AR-1268-4	8.854	7.555	461526	194272	4.064	0.881 #
45)	L9 AR-1268-5	9.232	7.878	844849	2456843	1.003	1.647 #

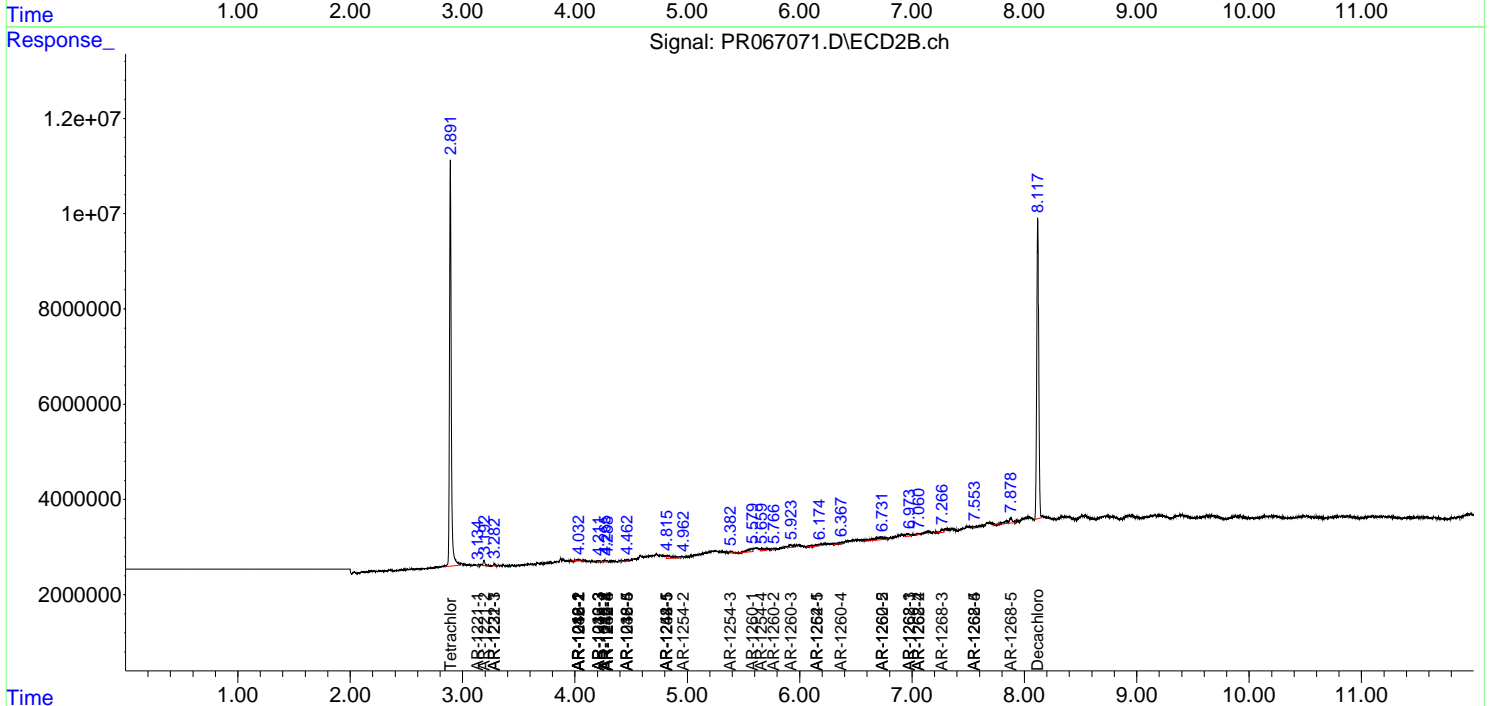
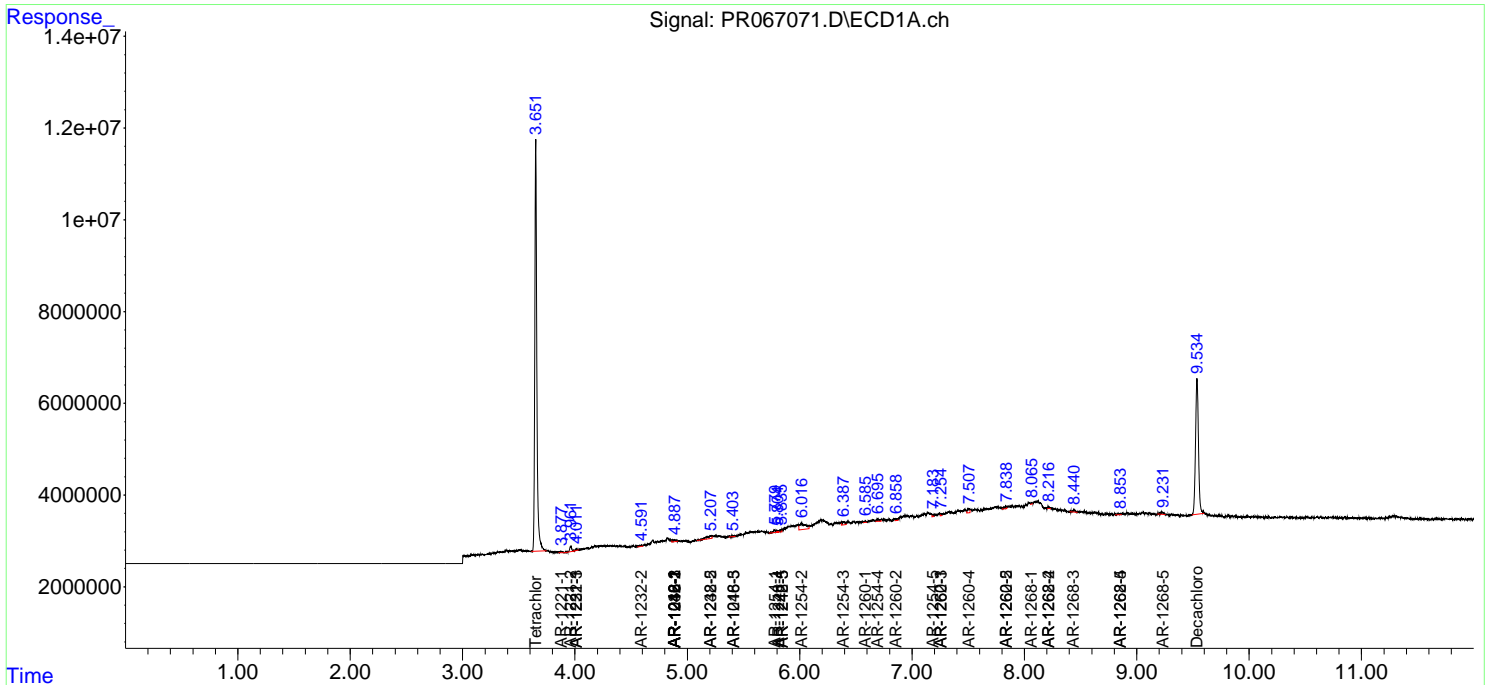
(f)=RT Delta > 1/2 Window (#)=Amounts differ by > 25% (m)=manual int.

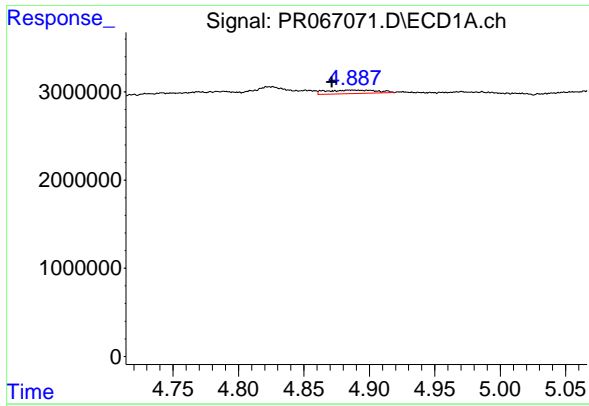
Data Path : Z:\pestpcbsrv\HPCHEM1\ECD\_R\Data\PR052824\  
 Data File : PR067071.D  
 Signal(s) : Signal #1: ECD1A.ch Signal #2: ECD2B.ch  
 Acq On : 28 May 2024 11:18  
 Operator : AJ\MA  
 Sample : AIBLK268  
 Misc :  
 ALS Vial : 2 Sample Multiplier: 1

Instrument :  
 ECD\_R  
 ClientSampleId :  
 AIBLK990

Integration File signal 1: autoint1.e  
 Integration File signal 2: autoint2.e  
 Quant Time: May 29 02:03:03 2024  
 Quant Method : Z:\pestpcbsrv\HPCHEM1\ECD\_R\Method\PR052124CLP.M  
 Quant Title : GC EXTRACTABLES  
 QLast Update : Wed May 22 04:28:16 2024  
 Response via : Initial Calibration  
 Integrator: ChemStation

Volume Inj. : 1 µl  
 Signal #1 Phase : ZB MR1 Signal #2 Phase: ZB MR2  
 Signal #1 Info : 30Mx0.32mmx 0.5µm Signal #2 Info : 30M x 0.32mm x 0.25µm

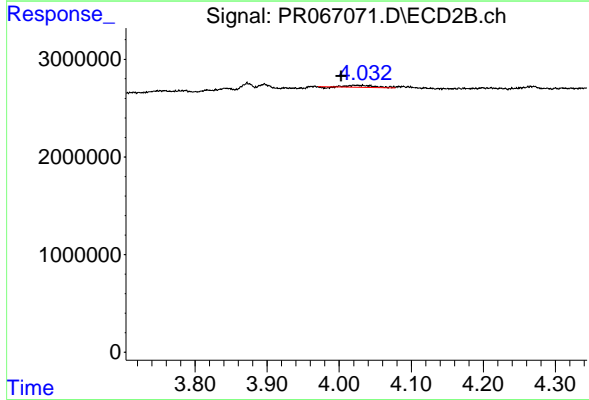




#3 AR-1016-1

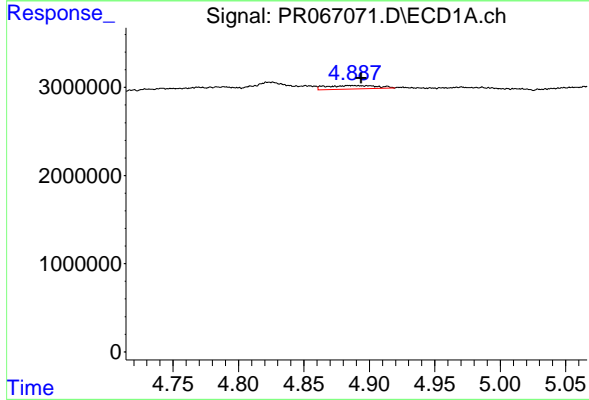
R.T.: 4.887 min  
 Delta R.T.: 0.015 min  
 Response: 1069052  
 Conc: 6.67 ng/ml

Instrument : ECD\_R  
 ClientSampleId : AIBLK990



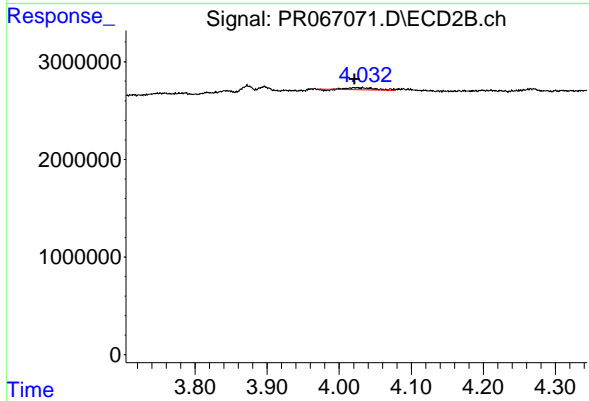
#3 AR-1016-1

R.T.: 4.032 min  
 Delta R.T.: 0.029 min  
 Response: 528783  
 Conc: 3.52 ng/ml



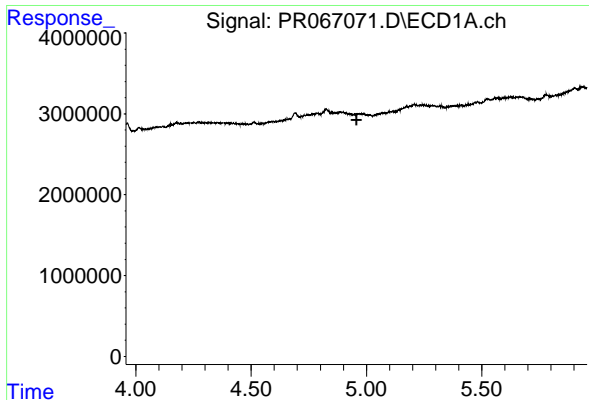
#4 AR-1016-2

R.T.: 4.887 min  
 Delta R.T.: -0.007 min  
 Response: 1069052  
 Conc: 4.16 ng/ml



#4 AR-1016-2

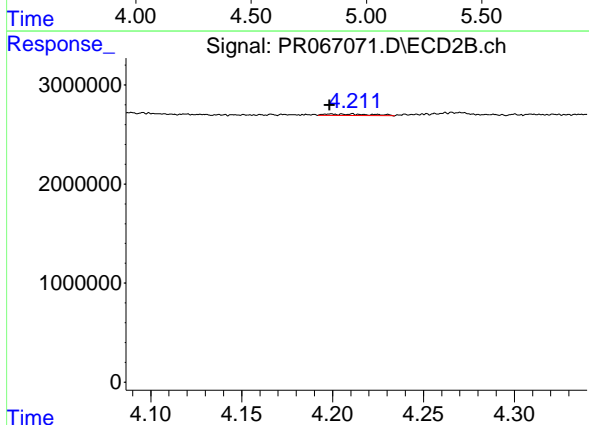
R.T.: 4.032 min  
 Delta R.T.: 0.011 min  
 Response: 528783  
 Conc: 2.39 ng/ml



#5 AR-1016-3

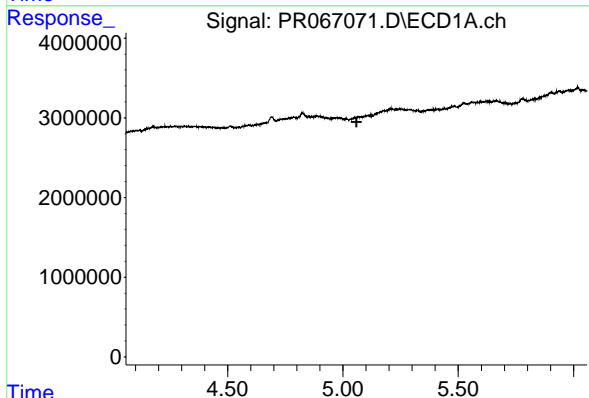
R.T.: 0.000 min  
 Exp R.T.: 4.957 min  
 Response: 0  
 Conc: N.D.

Instrument :  
 ECD\_R  
 ClientSampleId :  
 AIBLK990



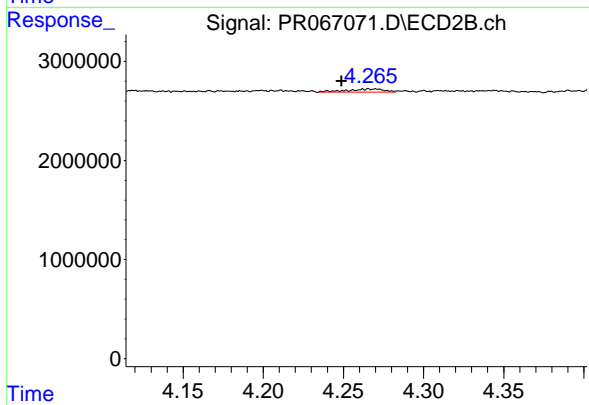
#5 AR-1016-3

R.T.: 4.211 min  
 Delta R.T.: 0.012 min  
 Response: 264746  
 Conc: 2.15 ng/ml



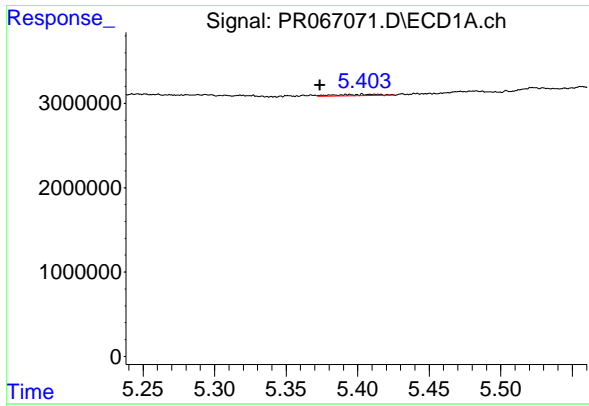
#6 AR-1016-4

R.T.: 5.069 min  
 Delta R.T.: 0.010 min  
 Response: -20035  
 Conc: N.D.



#6 AR-1016-4

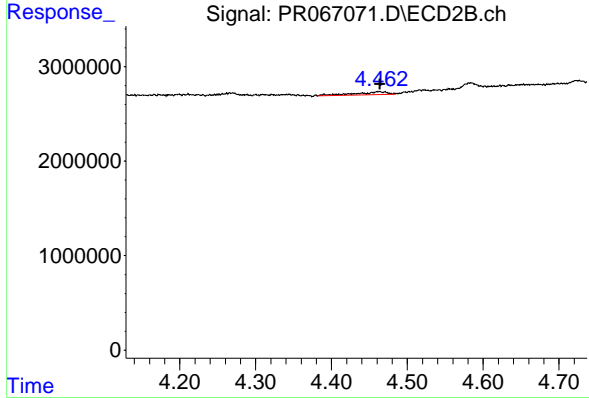
R.T.: 4.266 min  
 Delta R.T.: 0.017 min  
 Response: 518053  
 Conc: 4.96 ng/ml



#7 AR-1016-5

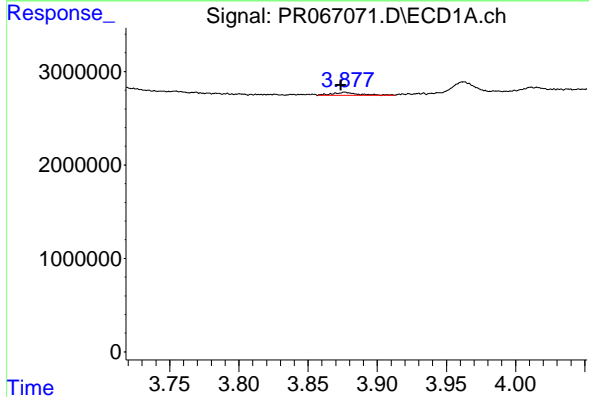
R.T.: 5.414 min  
 Delta R.T.: 0.040 min  
 Response: 351819  
 Conc: 2.61 ng/ml

Instrument :  
 ECD\_R  
 ClientSampleId :  
 AIBLK990



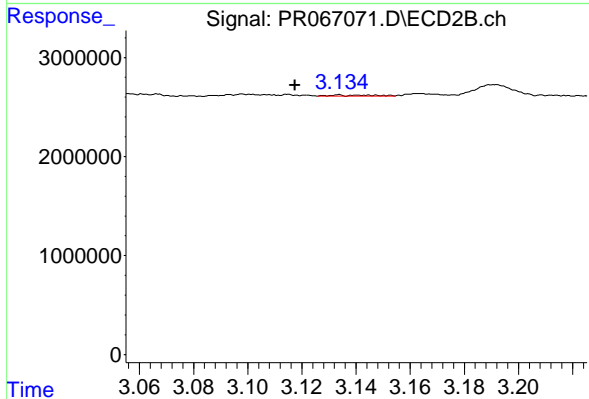
#7 AR-1016-5

R.T.: 4.463 min  
 Delta R.T.: -0.001 min  
 Response: 917303  
 Conc: 6.93 ng/ml



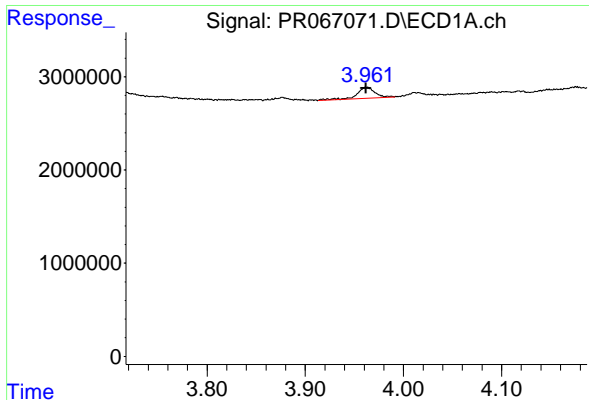
#8 AR-1221-1

R.T.: 3.877 min  
 Delta R.T.: 0.003 min  
 Response: 439021  
 Conc: 6.73 ng/ml



#8 AR-1221-1

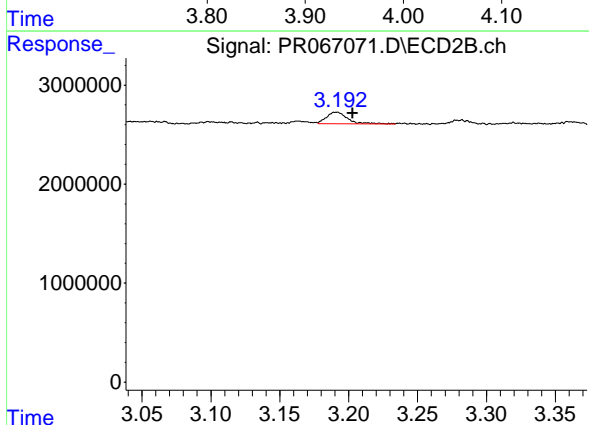
R.T.: 3.133 min  
 Delta R.T.: 0.016 min  
 Response: 113557  
 Conc: 2.04 ng/ml



#9 AR-1221-2

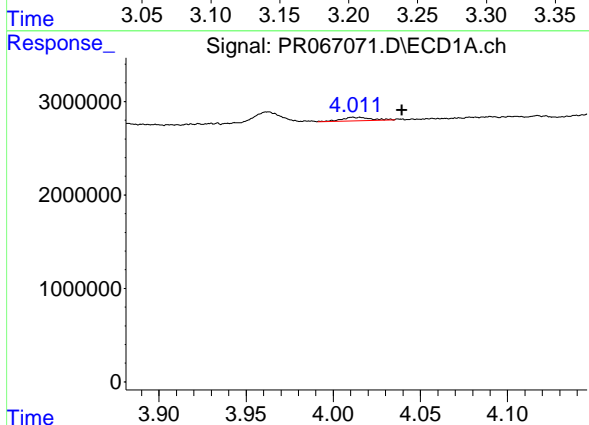
R.T.: 3.962 min  
 Delta R.T.: 0.000 min  
 Response: 1547515  
 Conc: 33.16 ng/ml

Instrument :  
 ECD\_R  
 ClientSampleId :  
 AIBLK990



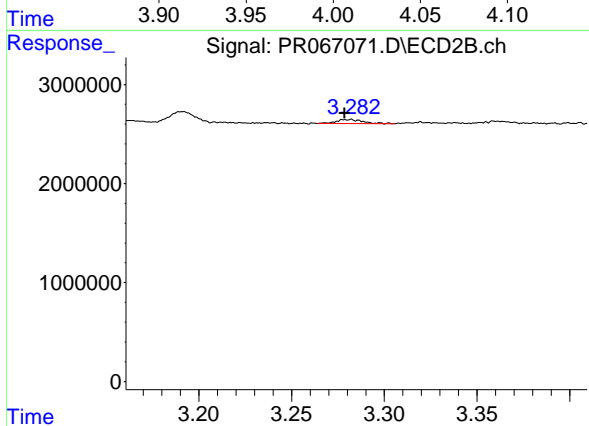
#9 AR-1221-2

R.T.: 3.191 min  
 Delta R.T.: -0.012 min  
 Response: 1251442  
 Conc: 31.26 ng/ml



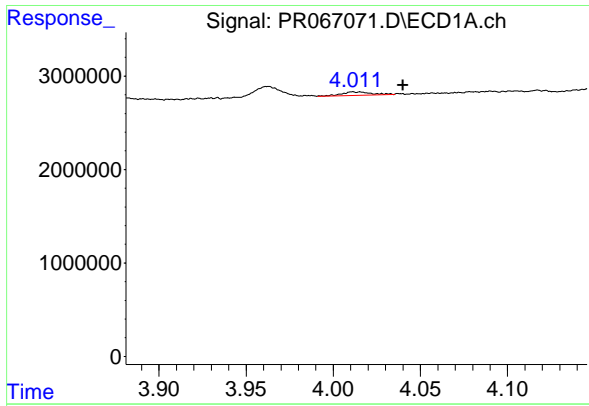
#10 AR-1221-3

R.T.: 4.015 min  
 Delta R.T.: -0.024 min  
 Response: 453015  
 Conc: 3.00 ng/ml



#10 AR-1221-3

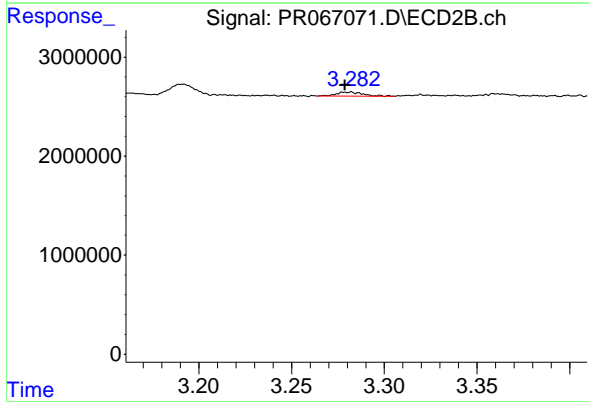
R.T.: 3.281 min  
 Delta R.T.: 0.003 min  
 Response: 401132  
 Conc: 3.18 ng/ml



#11 AR-1232-1

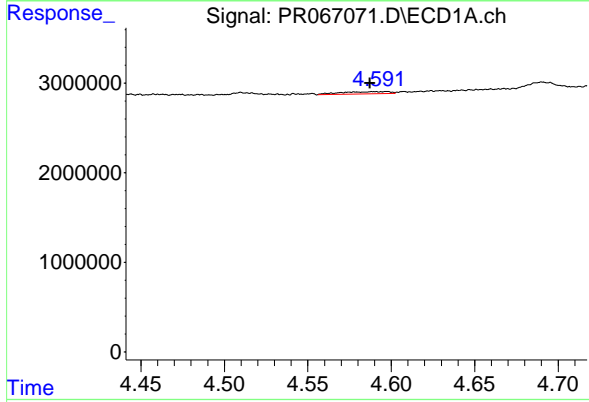
R.T.: 4.015 min  
 Delta R.T.: -0.025 min  
 Response: 453015  
 Conc: 3.57 ng/ml

Instrument :  
 ECD\_R  
 ClientSampleId :  
 AIBLK990



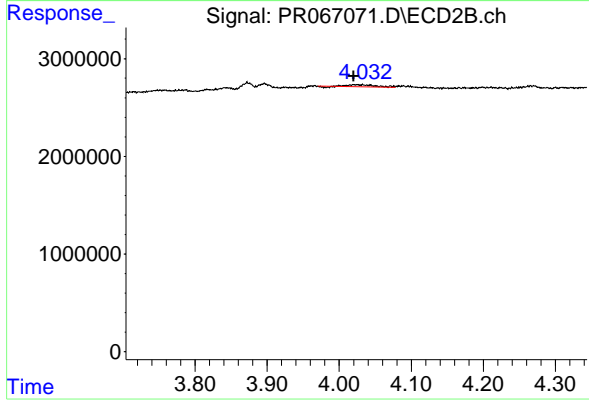
#11 AR-1232-1

R.T.: 3.281 min  
 Delta R.T.: 0.002 min  
 Response: 401132  
 Conc: 3.75 ng/ml



#12 AR-1232-2

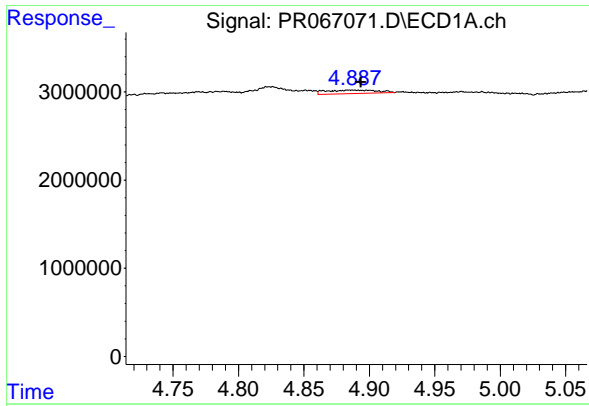
R.T.: 4.597 min  
 Delta R.T.: 0.010 min  
 Response: 488808  
 Conc: 6.88 ng/ml



#12 AR-1232-2

R.T.: 4.032 min  
 Delta R.T.: 0.012 min  
 Response: 528783  
 Conc: 5.10 ng/ml

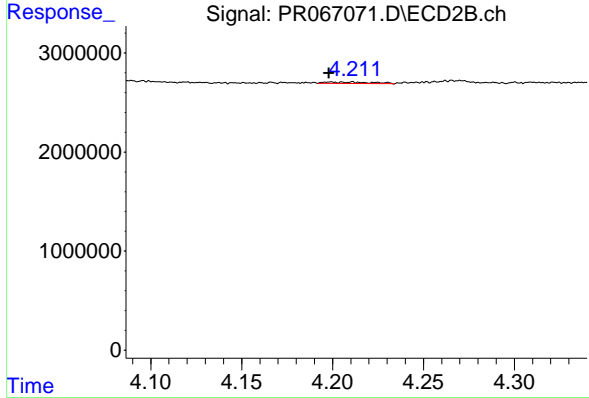




#13 AR-1232-3

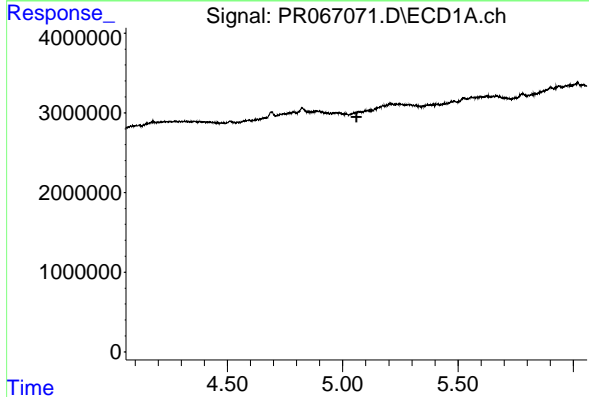
R.T.: 4.887 min  
 Delta R.T.: -0.007 min  
 Response: 1069052  
 Conc: 9.36 ng/ml

Instrument : ECD\_R  
 ClientSampleId : AIBLK990



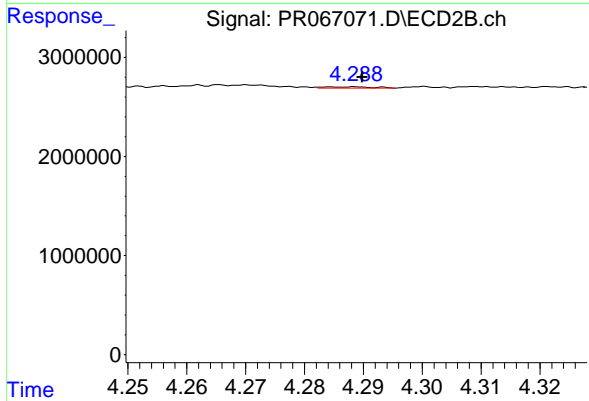
#13 AR-1232-3

R.T.: 4.211 min  
 Delta R.T.: 0.013 min  
 Response: 264746  
 Conc: 4.79 ng/ml



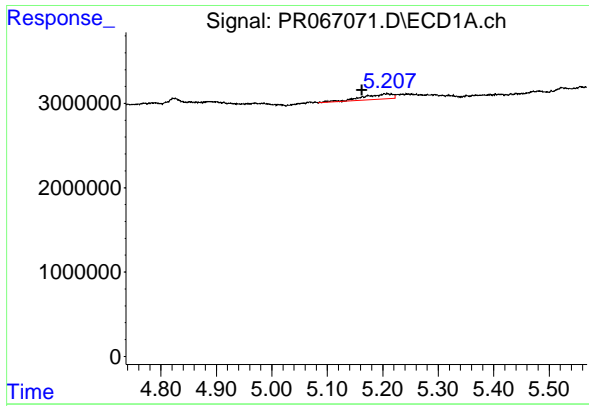
#14 AR-1232-4

R.T.: 5.069 min  
 Delta R.T.: 0.009 min  
 Response: -20035  
 Conc: N.D.



#14 AR-1232-4

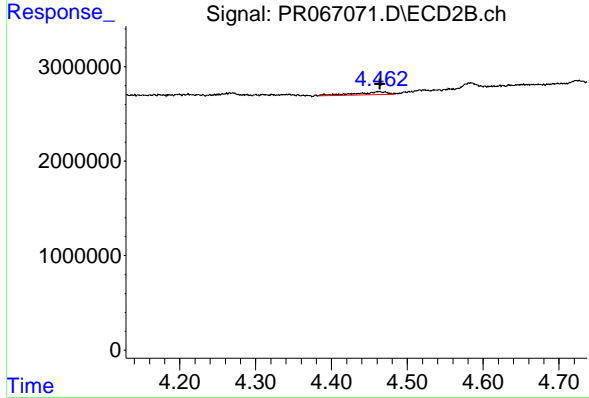
R.T.: 4.289 min  
 Delta R.T.: -0.001 min  
 Response: 76235  
 Conc: 1.49 ng/ml



#15 AR-1232-5

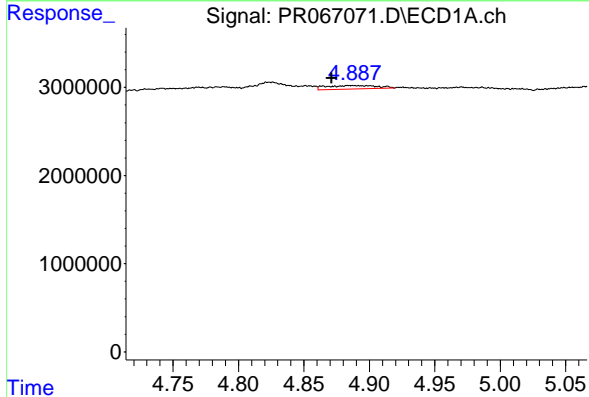
R.T.: 5.208 min  
 Delta R.T.: 0.046 min  
 Response: 2353268  
 Conc: 52.88 ng/ml

Instrument : ECD\_R  
 ClientSampleId : AIBLK990



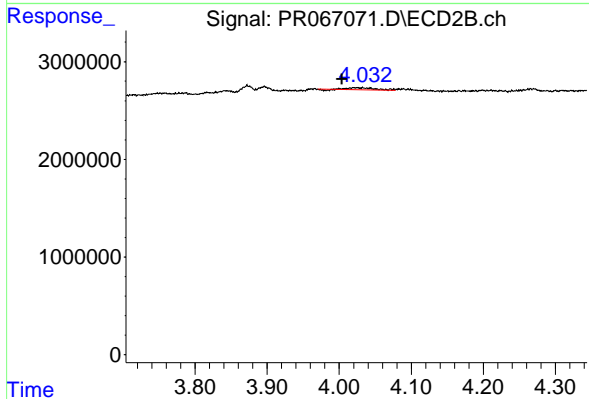
#15 AR-1232-5

R.T.: 4.463 min  
 Delta R.T.: -0.001 min  
 Response: 917303  
 Conc: 16.56 ng/ml



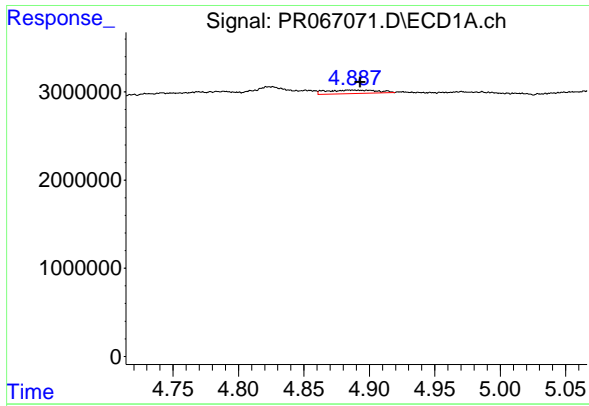
#16 AR-1242-1

R.T.: 4.887 min  
 Delta R.T.: 0.016 min  
 Response: 1069052  
 Conc: 8.67 ng/ml



#16 AR-1242-1

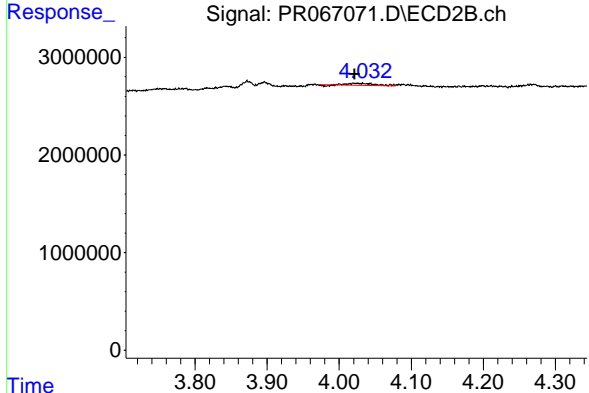
R.T.: 4.032 min  
 Delta R.T.: 0.029 min  
 Response: 528783  
 Conc: 4.45 ng/ml



#17 AR-1242-2

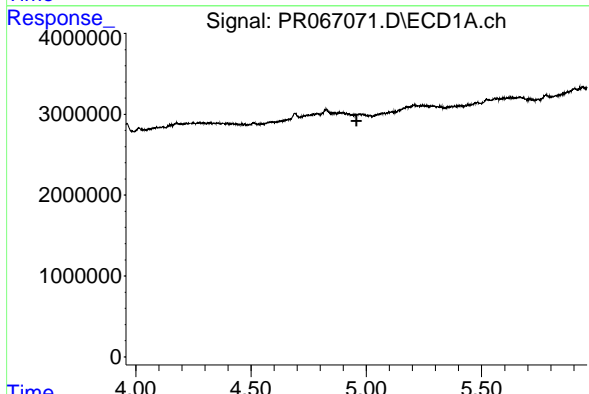
R.T.: 4.887 min  
 Delta R.T.: -0.006 min  
 Response: 1069052  
 Conc: 5.44 ng/ml

Instrument : ECD\_R  
 ClientSampleId : AIBLK990



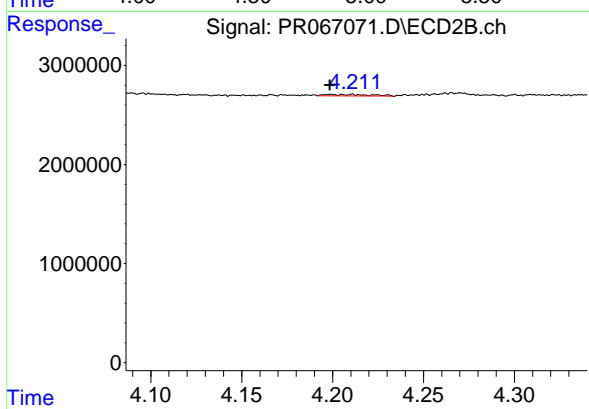
#17 AR-1242-2

R.T.: 4.032 min  
 Delta R.T.: 0.011 min  
 Response: 528783  
 Conc: 2.98 ng/ml



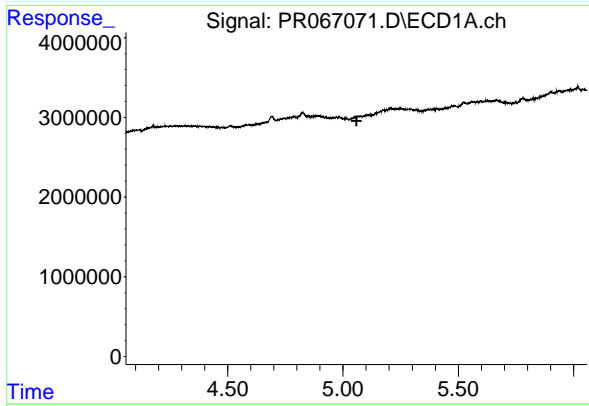
#18 AR-1242-3

R.T.: 0.000 min  
 Exp R.T. : 4.958 min  
 Response: 0  
 Conc: N.D.



#18 AR-1242-3

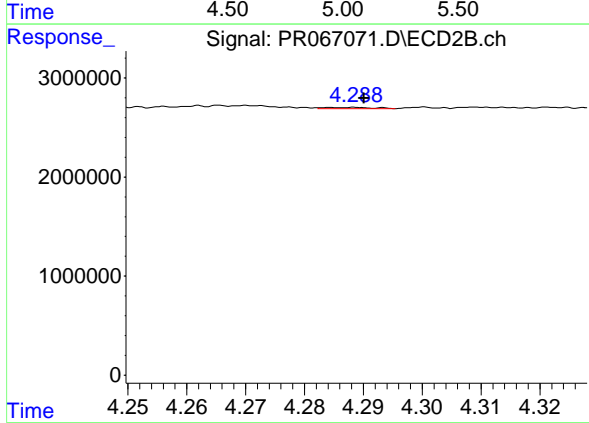
R.T.: 4.211 min  
 Delta R.T.: 0.012 min  
 Response: 264746  
 Conc: 2.70 ng/ml



#19 AR-1242-4

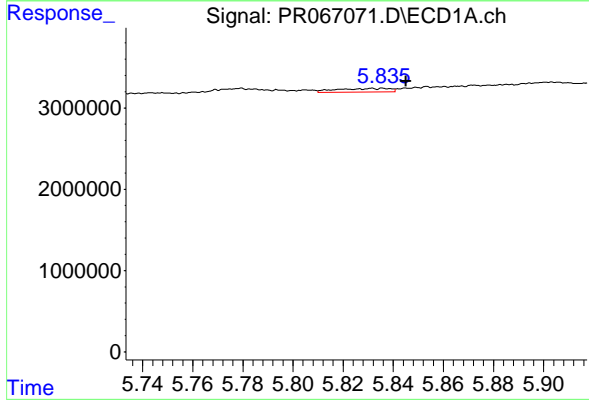
R.T.: 5.069 min  
 Delta R.T.: 0.011 min  
 Response: -20035  
 Conc: N.D.

Instrument :  
 ECD\_R  
 ClientSampleId :  
 AIBLK990



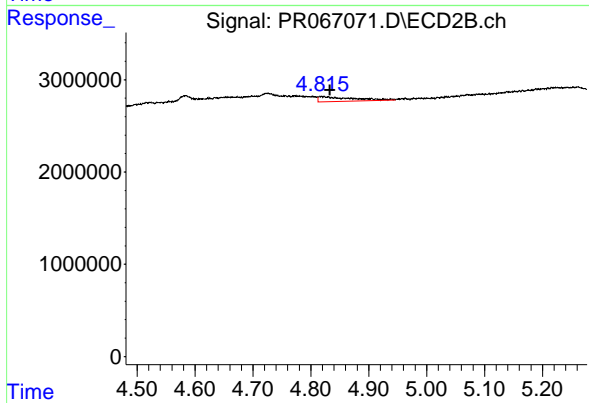
#19 AR-1242-4

R.T.: 4.289 min  
 Delta R.T.: -0.002 min  
 Response: 76235  
 Conc: 0.77 ng/ml



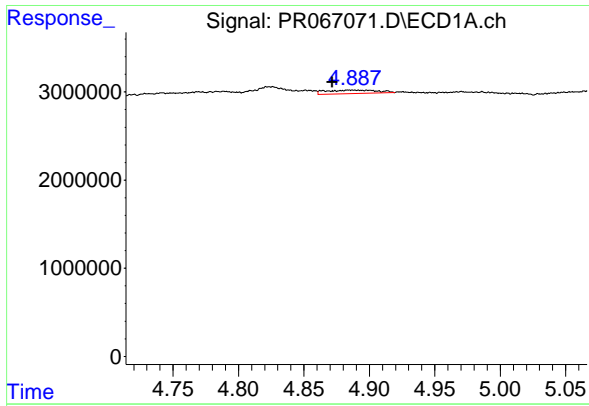
#20 AR-1242-5

R.T.: 5.836 min  
 Delta R.T.: -0.009 min  
 Response: 668724  
 Conc: 6.36 ng/ml



#20 AR-1242-5

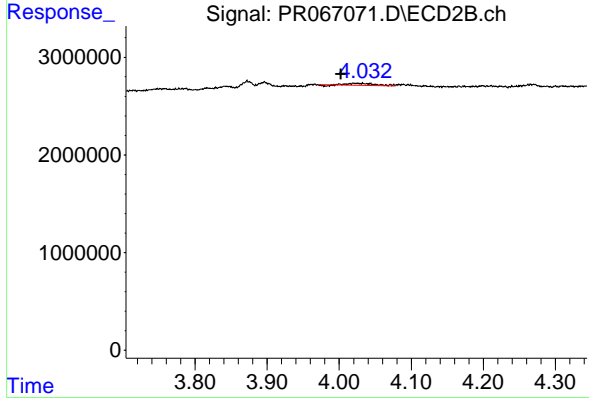
R.T.: 4.819 min  
 Delta R.T.: -0.014 min  
 Response: 2066456  
 Conc: 17.54 ng/ml



#21 AR-1248-1

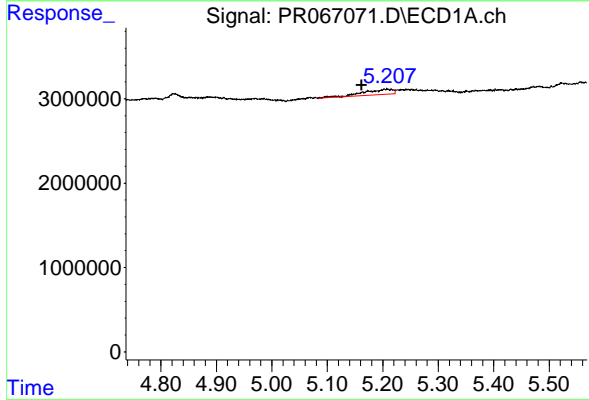
R.T.: 4.887 min  
 Delta R.T.: 0.015 min  
 Response: 1069052  
 Conc: 11.76 ng/ml

Instrument :  
 ECD\_R  
 ClientSampleId :  
 AIBLK990



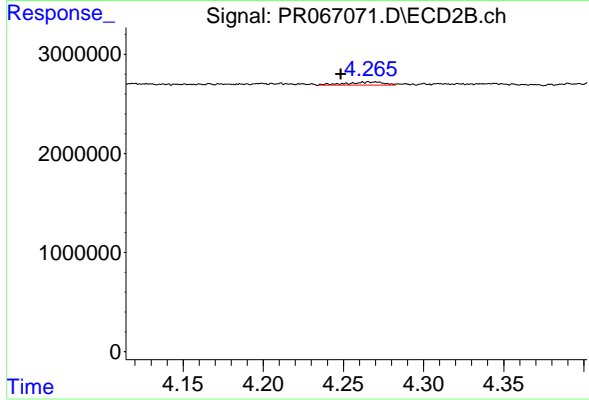
#21 AR-1248-1

R.T.: 4.032 min  
 Delta R.T.: 0.030 min  
 Response: 528783  
 Conc: 5.85 ng/ml



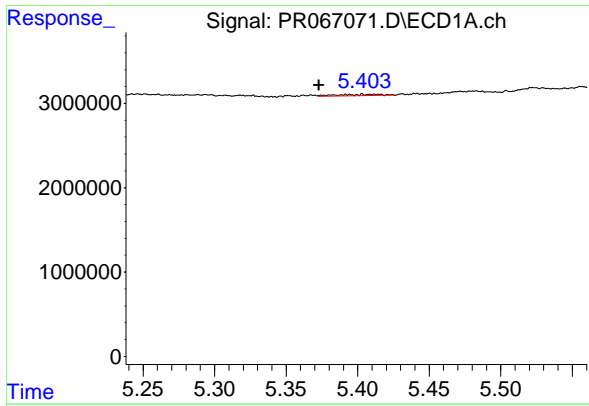
#22 AR-1248-2

R.T.: 5.208 min  
 Delta R.T.: 0.046 min  
 Response: 2353268  
 Conc: 15.81 ng/ml



#22 AR-1248-2

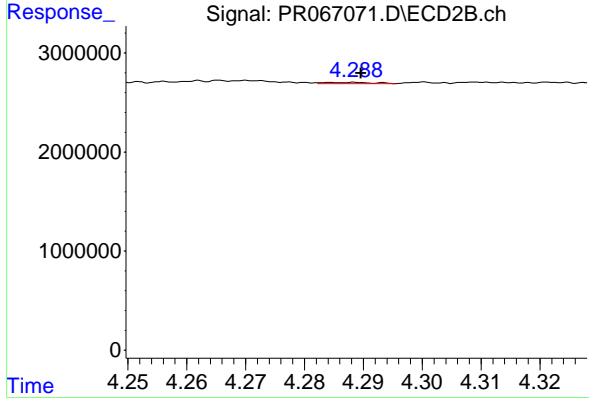
R.T.: 4.266 min  
 Delta R.T.: 0.018 min  
 Response: 518053  
 Conc: 3.71 ng/ml



#23 AR-1248-3

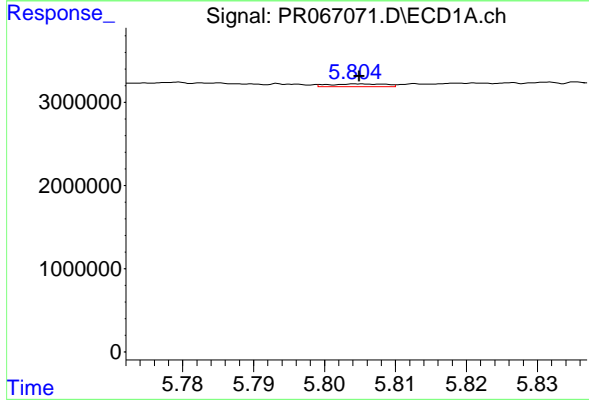
R.T.: 5.414 min  
 Delta R.T.: 0.040 min  
 Response: 351819  
 Conc: 2.06 ng/ml

Instrument :  
 ECD\_R  
 ClientSampleId :  
 AIBLK990



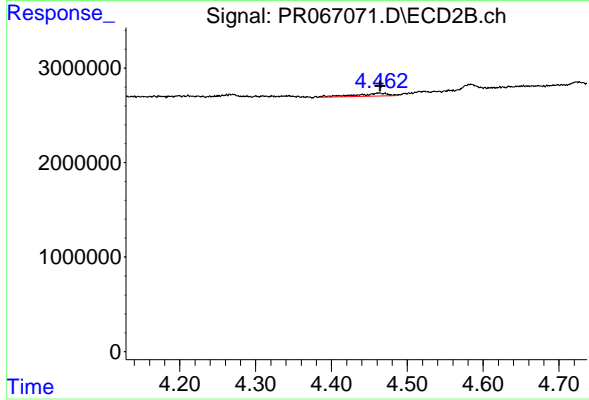
#23 AR-1248-3

R.T.: 4.289 min  
 Delta R.T.: -0.001 min  
 Response: 76235  
 Conc: 0.55 ng/ml



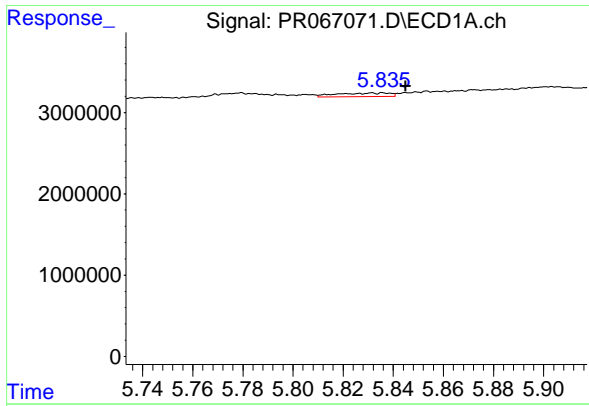
#24 AR-1248-4

R.T.: 5.806 min  
 Delta R.T.: 0.000 min  
 Response: 184205  
 Conc: 1.17 ng/ml



#24 AR-1248-4

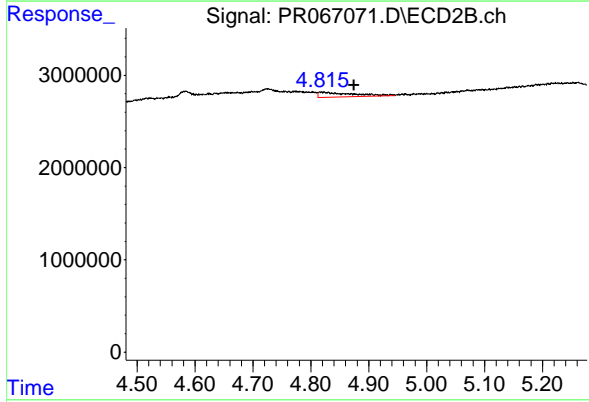
R.T.: 4.463 min  
 Delta R.T.: -0.001 min  
 Response: 917303  
 Conc: 5.48 ng/ml



#25 AR-1248-5

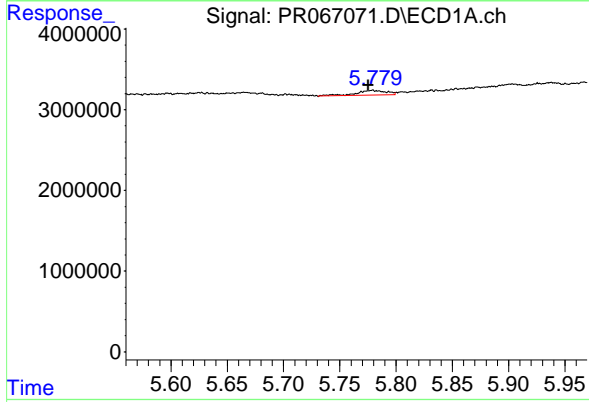
R.T.: 5.836 min  
 Delta R.T.: -0.009 min  
 Response: 668724  
 Conc: 3.76 ng/ml

Instrument :  
 ECD\_R  
 ClientSampleId :  
 AIBLK990



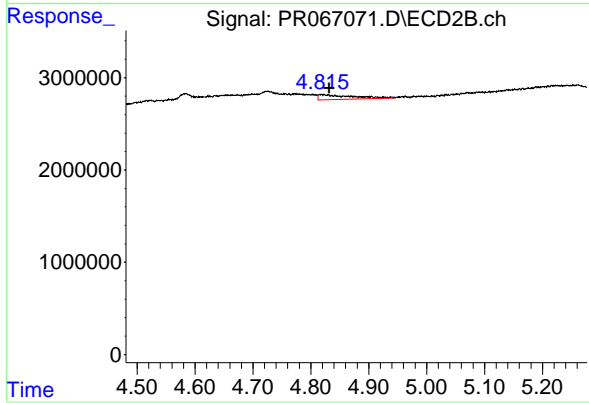
#25 AR-1248-5

R.T.: 4.819 min  
 Delta R.T.: -0.055 min  
 Response: 2066456  
 Conc: 13.38 ng/ml



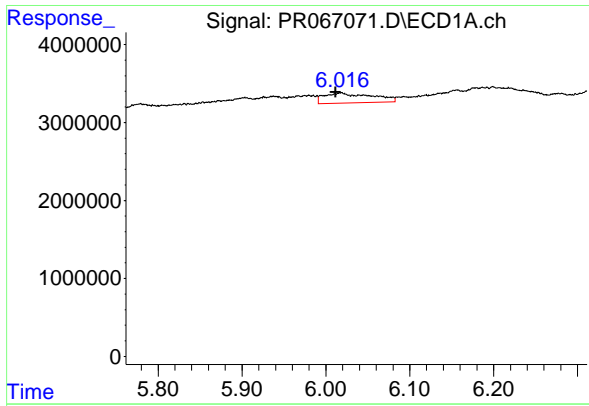
#26 AR-1254-1

R.T.: 5.779 min  
 Delta R.T.: 0.003 min  
 Response: 1070128  
 Conc: 5.61 ng/ml



#26 AR-1254-1

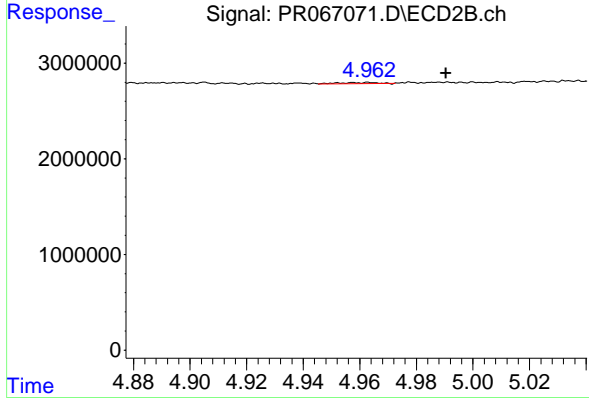
R.T.: 4.819 min  
 Delta R.T.: -0.013 min  
 Response: 2066456  
 Conc: 8.46 ng/ml



#27 AR-1254-2

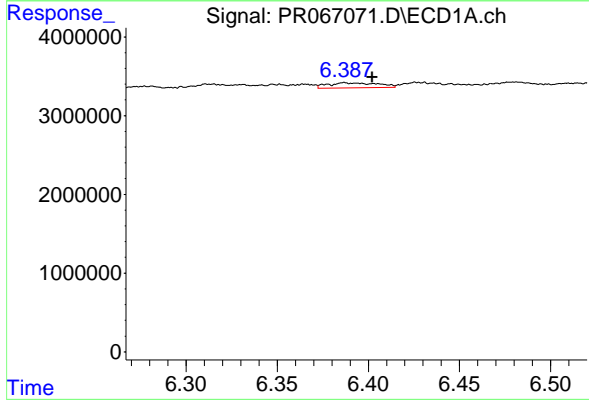
R.T.: 6.018 min  
 Delta R.T.: 0.006 min  
 Response: 5146656  
 Conc: 18.34 ng/ml

Instrument :  
 ECD\_R  
 ClientSampleId :  
 AIBLK990



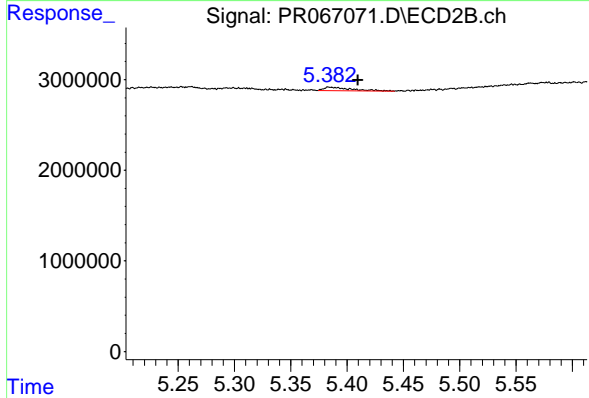
#27 AR-1254-2

R.T.: 4.962 min  
 Delta R.T.: -0.028 min  
 Response: 111827  
 Conc: 0.52 ng/ml



#28 AR-1254-3

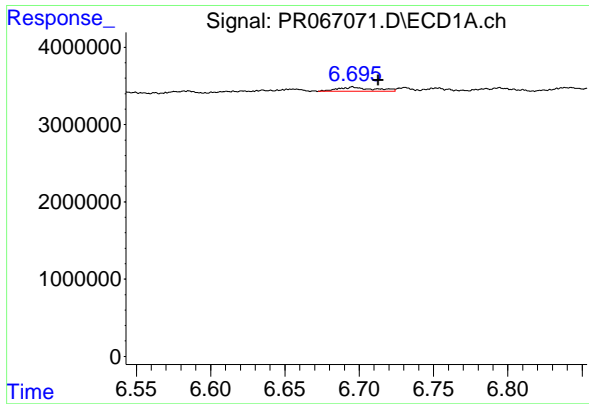
R.T.: 6.387 min  
 Delta R.T.: -0.015 min  
 Response: 1276497  
 Conc: 4.76 ng/ml



#28 AR-1254-3

R.T.: 5.386 min  
 Delta R.T.: -0.024 min  
 Response: 613206  
 Conc: 1.80 ng/ml

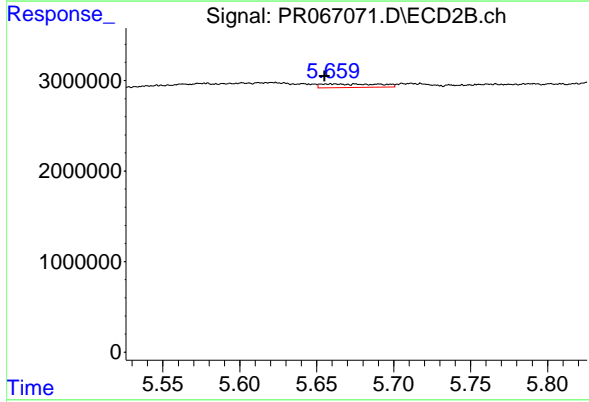




#29 AR-1254-4

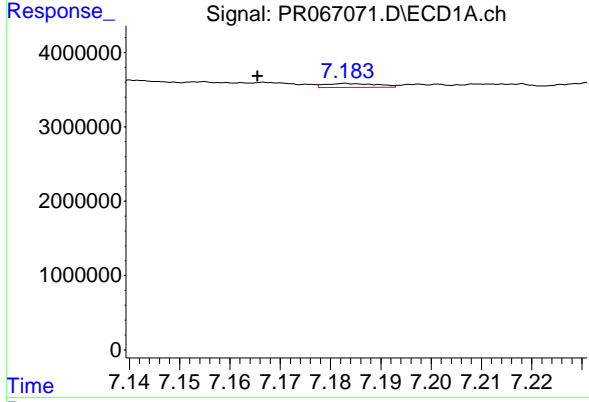
R.T.: 6.696 min  
 Delta R.T.: -0.017 min  
 Response: 939980  
 Conc: 5.83 ng/ml

Instrument :  
 ECD\_R  
 ClientSampleId :  
 AIBLK990



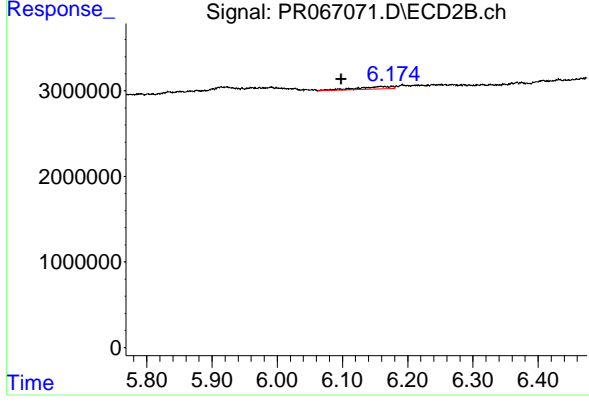
#29 AR-1254-4

R.T.: 5.659 min  
 Delta R.T.: 0.004 min  
 Response: 1011661  
 Conc: 5.16 ng/ml



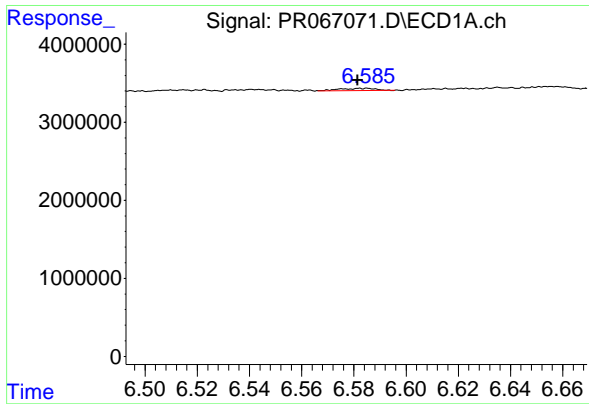
#30 AR-1254-5

R.T.: 7.183 min  
 Delta R.T.: 0.018 min  
 Response: 394536  
 Conc: 2.05 ng/ml



#30 AR-1254-5

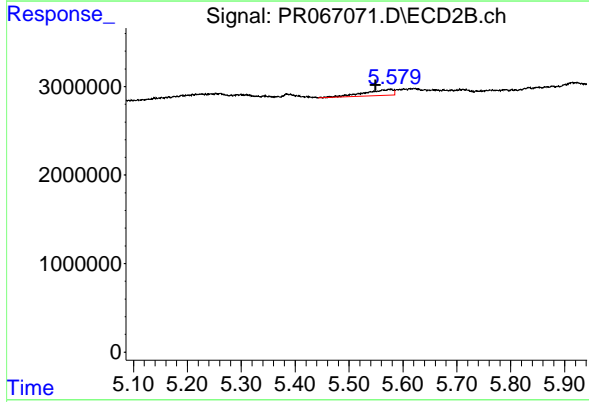
R.T.: 6.159 min  
 Delta R.T.: 0.061 min  
 Response: 952851  
 Conc: 3.09 ng/ml



#31 AR-1260-1

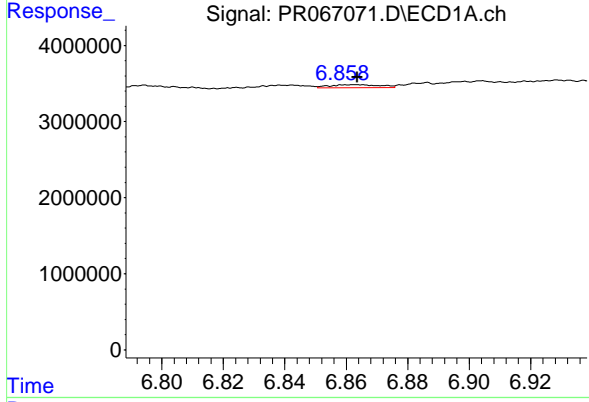
R.T.: 6.584 min  
 Delta R.T.: 0.003 min  
 Response: 298283  
 Conc: 1.22 ng/ml

Instrument :  
 ECD\_R  
 ClientSampleId :  
 AIBLK990



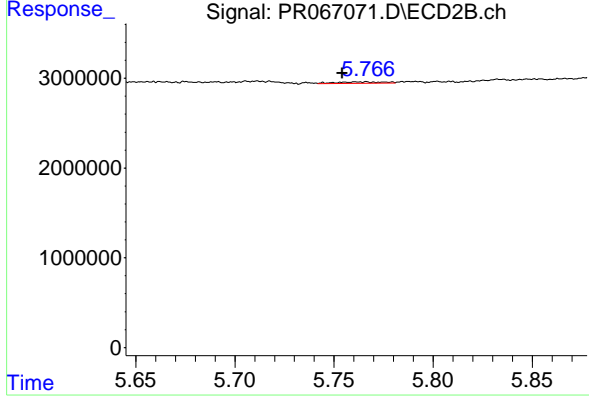
#31 AR-1260-1

R.T.: 5.576 min  
 Delta R.T.: 0.027 min  
 Response: 2452783  
 Conc: 9.41 ng/ml



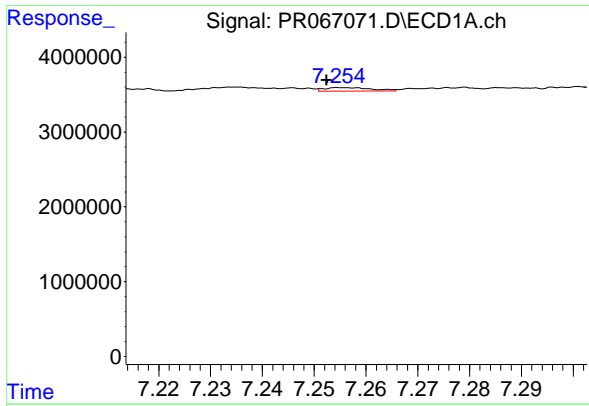
#32 AR-1260-2

R.T.: 6.863 min  
 Delta R.T.: 0.000 min  
 Response: 448787  
 Conc: 1.73 ng/ml



#32 AR-1260-2

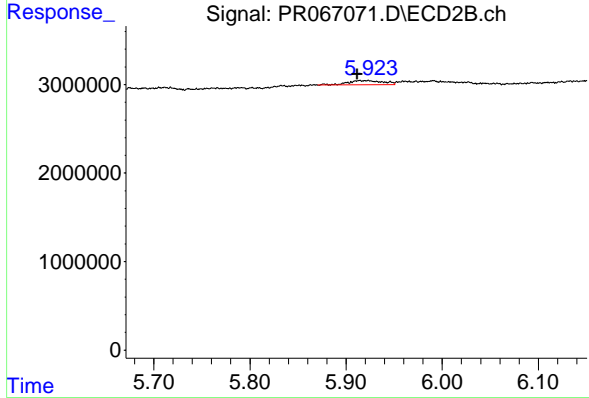
R.T.: 5.764 min  
 Delta R.T.: 0.010 min  
 Response: 279706  
 Conc: 0.91 ng/ml



#33 AR-1260-3

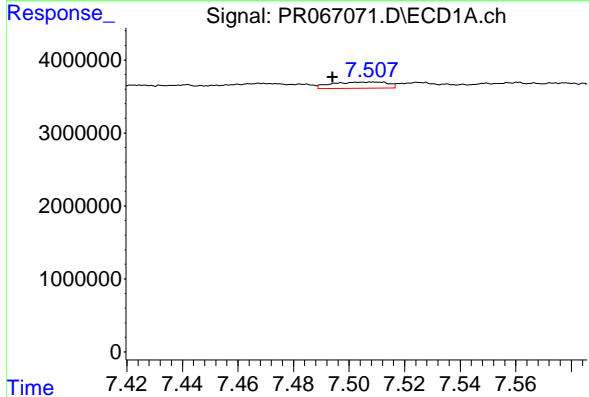
R.T.: 7.256 min  
 Delta R.T.: 0.004 min  
 Response: 295184  
 Conc: 1.49 ng/ml

Instrument : ECD\_R  
 ClientSampleId : AIBLK990



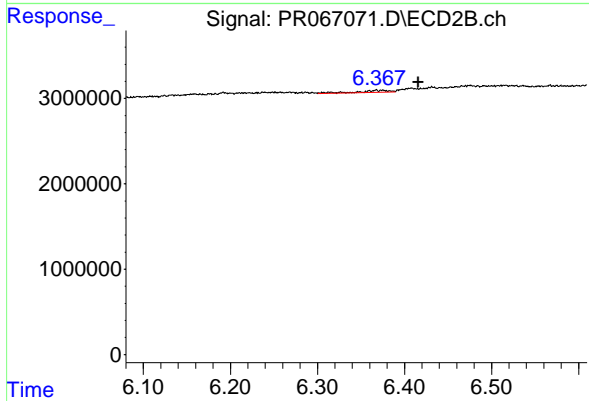
#33 AR-1260-3

R.T.: 5.922 min  
 Delta R.T.: 0.010 min  
 Response: 1280629  
 Conc: 4.37 ng/ml



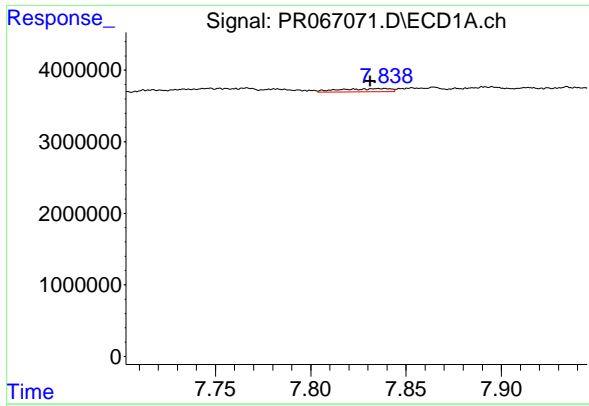
#34 AR-1260-4

R.T.: 7.508 min  
 Delta R.T.: 0.014 min  
 Response: 1166328  
 Conc: 5.58 ng/ml



#34 AR-1260-4

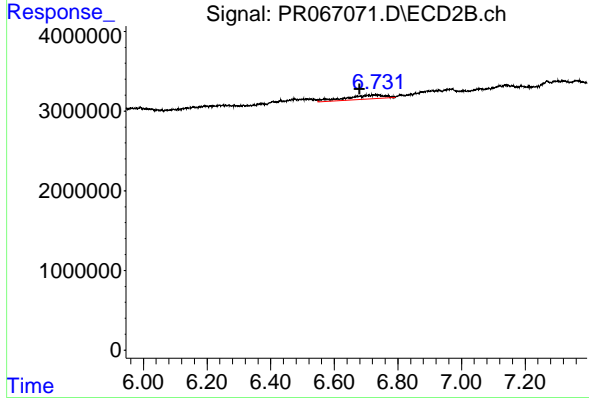
R.T.: 6.373 min  
 Delta R.T.: -0.043 min  
 Response: 528931  
 Conc: 2.12 ng/ml



#35 AR-1260-5

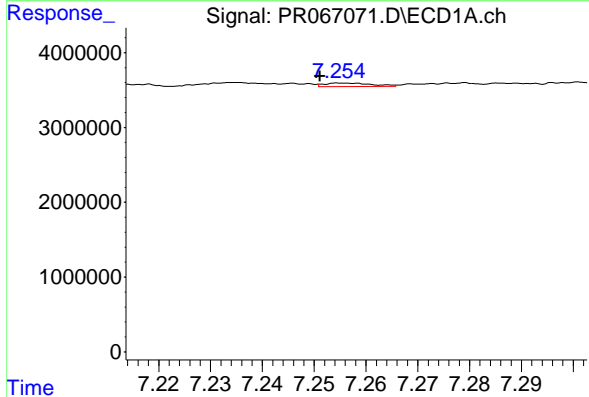
R.T.: 7.839 min  
 Delta R.T.: 0.007 min  
 Response: 800748  
 Conc: 2.34 ng/ml

Instrument : ECD\_R  
 ClientSampleId : AIBLK990



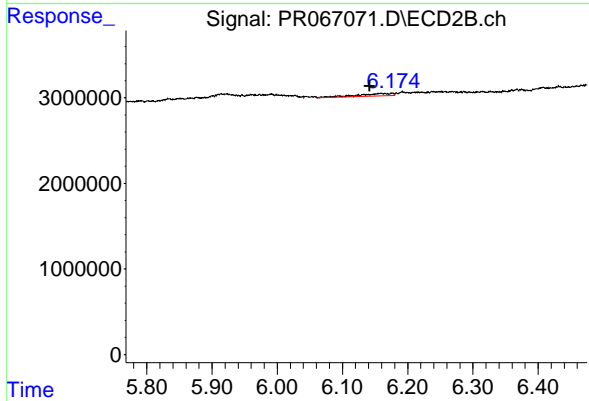
#35 AR-1260-5

R.T.: 6.732 min  
 Delta R.T.: 0.053 min  
 Response: 4462079  
 Conc: 8.17 ng/ml



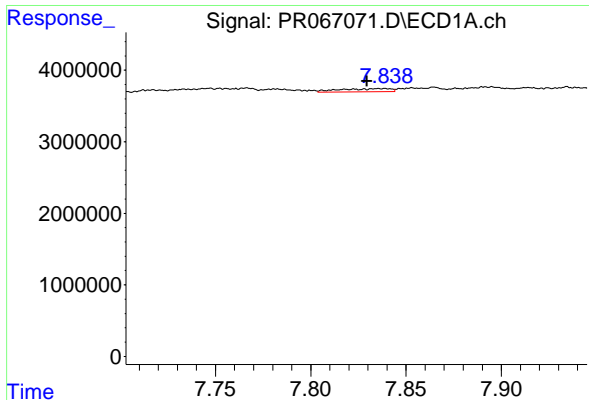
#36 AR-1262-1

R.T.: 7.256 min  
 Delta R.T.: 0.005 min  
 Response: 295184  
 Conc: 1.14 ng/ml



#36 AR-1262-1

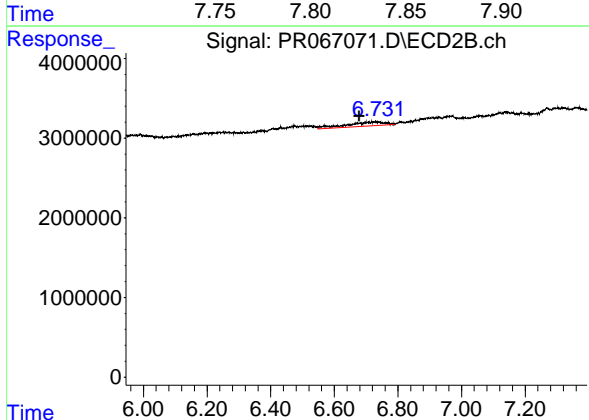
R.T.: 6.159 min  
 Delta R.T.: 0.017 min  
 Response: 952851  
 Conc: 2.87 ng/ml



#37 AR-1262-2

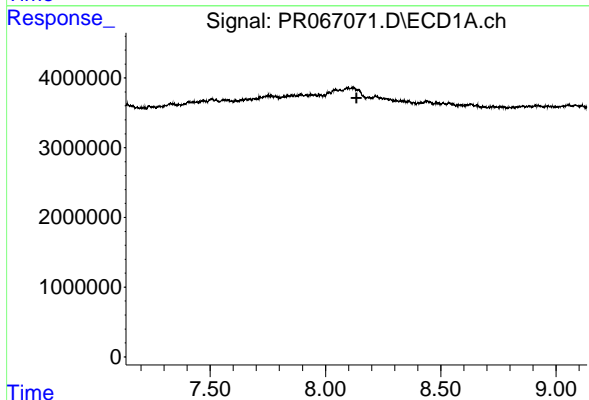
R.T.: 7.839 min  
 Delta R.T.: 0.009 min  
 Response: 800748  
 Conc: 2.31 ng/ml

Instrument : ECD\_R  
 ClientSampleId : AIBLK990



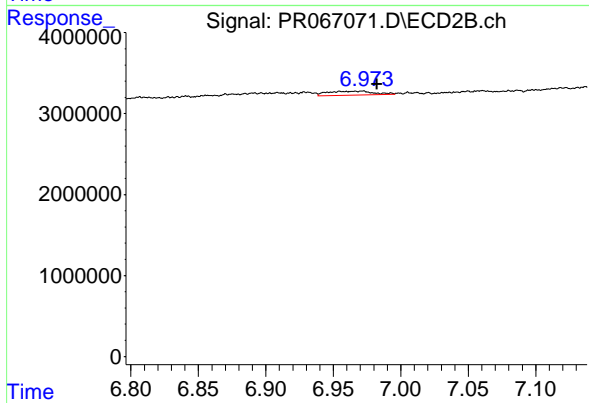
#37 AR-1262-2

R.T.: 6.732 min  
 Delta R.T.: 0.054 min  
 Response: 4462079  
 Conc: 8.02 ng/ml



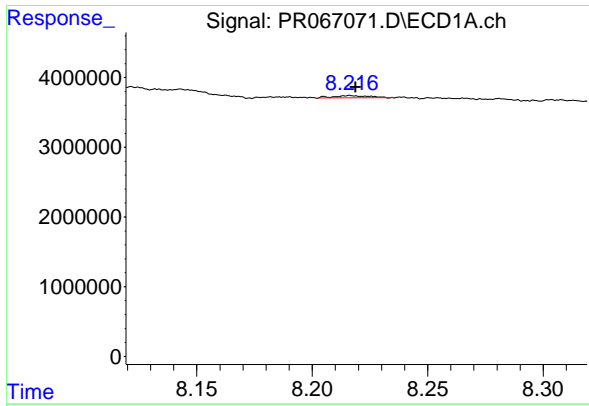
#38 AR-1262-3

R.T.: 0.000 min  
 Exp R.T. : 8.135 min  
 Response: 0  
 Conc: N.D.



#38 AR-1262-3

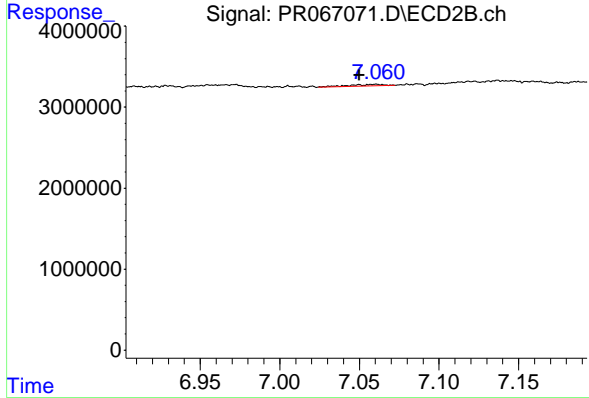
R.T.: 6.970 min  
 Delta R.T.: -0.012 min  
 Response: 1178745  
 Conc: 4.94 ng/ml



#39 AR-1262-4

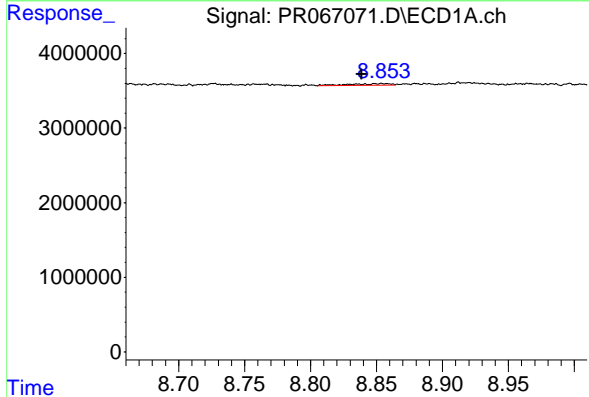
R.T.: 8.216 min  
 Delta R.T.: -0.002 min  
 Response: 365762  
 Conc: 2.03 ng/ml

Instrument :  
 ECD\_R  
 ClientSampleId :  
 AIBLK990



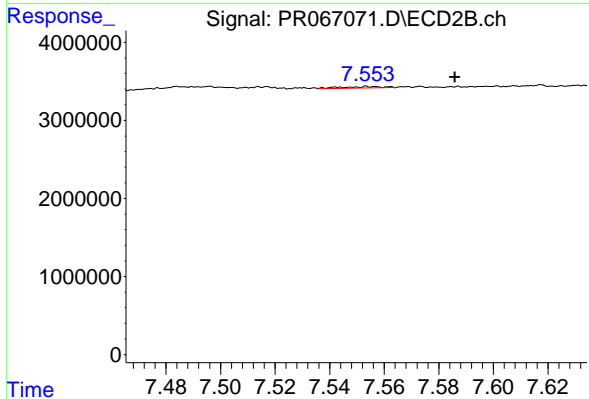
#39 AR-1262-4

R.T.: 7.060 min  
 Delta R.T.: 0.010 min  
 Response: 258982  
 Conc: 0.61 ng/ml



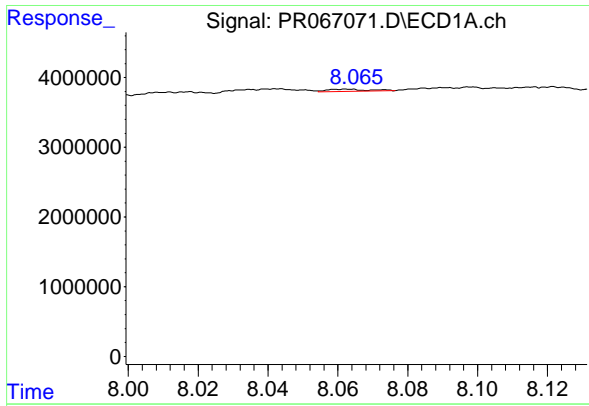
#40 AR-1262-5

R.T.: 8.854 min  
 Delta R.T.: 0.016 min  
 Response: 461526  
 Conc: 4.51 ng/ml



#40 AR-1262-5

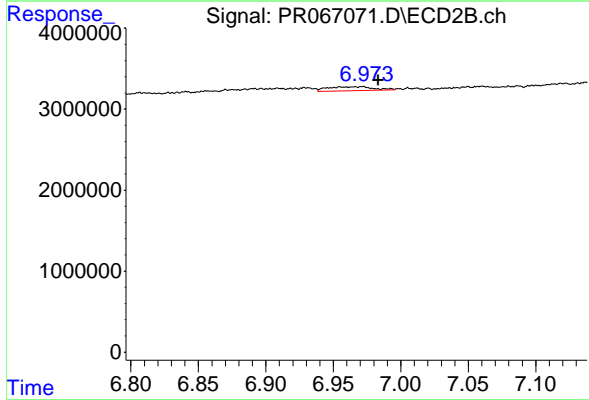
R.T.: 7.555 min  
 Delta R.T.: -0.031 min  
 Response: 194272  
 Conc: 0.99 ng/ml



#41 AR-1268-1

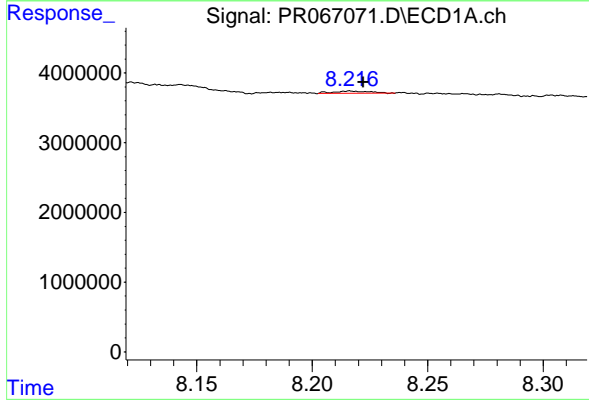
R.T.: 8.063 min  
 Delta R.T.: -0.069 min  
 Response: 244377  
 Conc: 0.59 ng/ml

Instrument :  
 ECD\_R  
 ClientSampleId :  
 AIBLK990



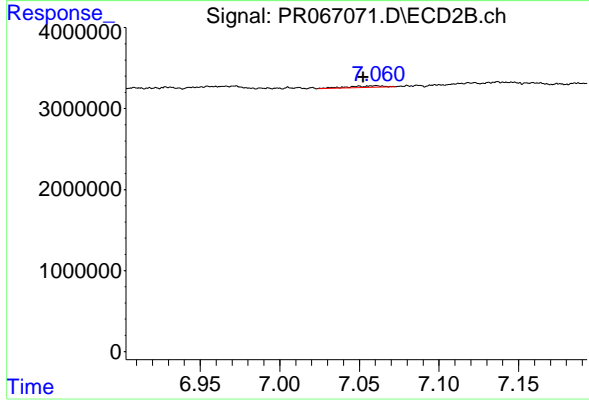
#41 AR-1268-1

R.T.: 6.970 min  
 Delta R.T.: -0.013 min  
 Response: 1178745  
 Conc: 1.77 ng/ml



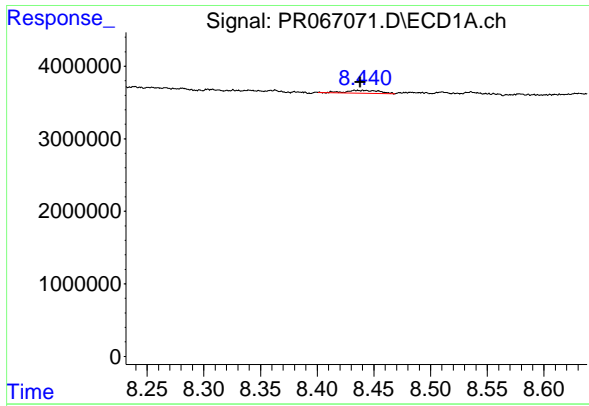
#42 AR-1268-2

R.T.: 8.216 min  
 Delta R.T.: -0.006 min  
 Response: 365762  
 Conc: 0.99 ng/ml



#42 AR-1268-2

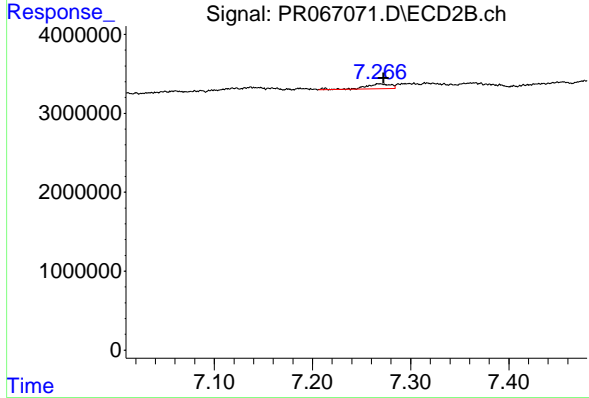
R.T.: 7.060 min  
 Delta R.T.: 0.008 min  
 Response: 258982  
 Conc: 0.42 ng/ml



#43 AR-1268-3

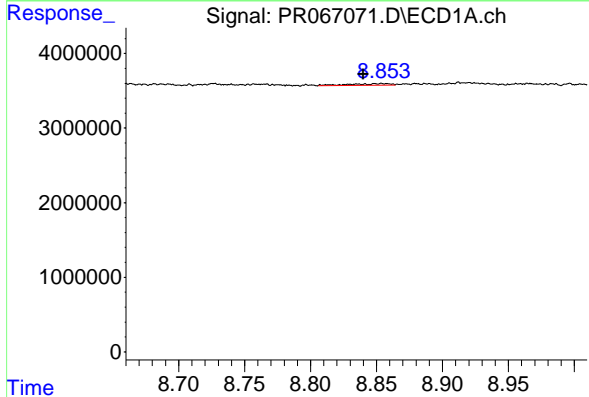
R.T.: 8.435 min  
 Delta R.T.: -0.003 min  
 Response: 797131  
 Conc: 2.45 ng/ml

Instrument : ECD\_R  
 ClientSampleId : AIBLK990



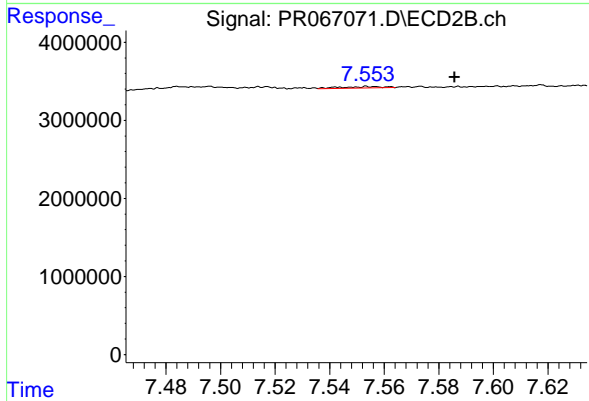
#43 AR-1268-3

R.T.: 7.269 min  
 Delta R.T.: -0.004 min  
 Response: 1135959  
 Conc: 2.12 ng/ml



#44 AR-1268-4

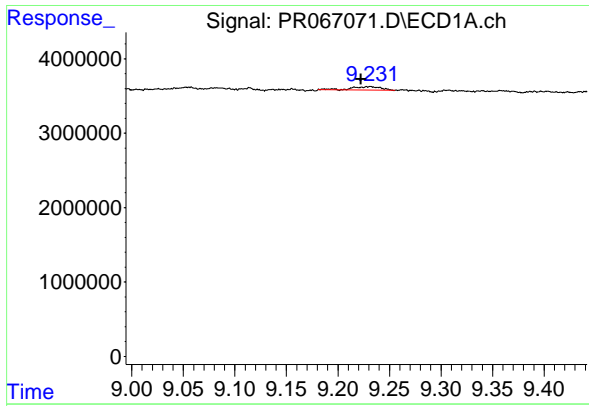
R.T.: 8.854 min  
 Delta R.T.: 0.014 min  
 Response: 461526  
 Conc: 4.06 ng/ml



#44 AR-1268-4

R.T.: 7.555 min  
 Delta R.T.: -0.031 min  
 Response: 194272  
 Conc: 0.88 ng/ml

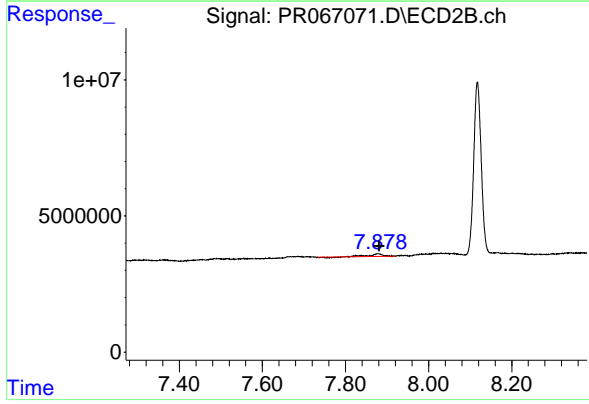




#45 AR-1268-5

R.T.: 9.232 min  
Delta R.T.: 0.009 min  
Response: 844849  
Conc: 1.00 ng/ml

Instrument :  
ECD\_R  
ClientSampleId :  
AIBLK990



#45 AR-1268-5

R.T.: 7.878 min  
Delta R.T.: -0.003 min  
Response: 2456843  
Conc: 1.65 ng/ml