

Data Path : Z:\pestpcbsrv\HPCHEM1\ECD_R\Data\PR052824\
 Data File : PR067097-1.D
 Signal(s) : Signal #1: ECD1A.ch Signal #2: ECD2B.ch
 Acq On : 28 May 2024 20:58
 Operator : AJ\MA
 Sample : AR1660CCC400
 Misc :
 ALS Vial : 3 Sample Multiplier: 1

Instrument :
 ECD_R
 ClientSampleId :

Integration File signal 1: autoint1.e
 Integration File signal 2: autoint2.e
 Quant Time: May 29 02:14:38 2024
 Quant Method : Z:\pestpcbsrv\HPCHEM1\ECD_R\Method\PR052124CLP.M
 Quant Title : GC EXTRACTABLES
 QLast Update : Wed May 22 04:28:16 2024
 Response via : Initial Calibration
 Integrator: ChemStation

Volume Inj. : 1 µl
 Signal #1 Phase : ZB MR1 Signal #2 Phase: ZB MR2
 Signal #1 Info : 30Mx0.32mmx 0.5µm Signal #2 Info : 30M x 0.32mm x 0.25µm

Compound	RT#1	RT#2	Resp#1	Resp#2	ng/ml	ng/ml

System Monitoring Compounds						
1) SA Tetrachlo...	3.650	2.892	110.9E6	86170061	18.076	18.508
2) SA Decachlor...	9.526	8.113	50929264	77900639	39.223	34.989
Target Compounds						
3) L1 AR-1016-1	4.869	3.999	61450328	58916907	383.117	392.470
4) L1 AR-1016-2	4.891	4.017	96335208	87218776	375.210	393.609
5) L1 AR-1016-3	4.955	4.194	63968080	47935418	371.615	389.073
6) L1 AR-1016-4	5.057	4.244	49850121	39817909	375.838	381.251
7) L1 AR-1016-5	5.371	4.460	49601911	50906225	367.522	384.356
8) L2 AR-1221-1	3.869	3.114	7461571	6441413	114.354	115.993
9) L2 AR-1221-2	3.961	3.200	9512920	8267053	203.815	206.530
10) L2 AR-1221-3	4.038	3.276	39997076	33722790	265.112	267.246
11) L3 AR-1232-1	4.038	3.276	39997076	33722790	315.231	315.105
12) L3 AR-1232-2	4.585	4.017	53639557	87218776	754.951	841.848
13) L3 AR-1232-3	4.891	4.194	96335208	47935418	843.109	866.852
14) L3 AR-1232-4	5.057	4.286	49850121	46802429	861.382	915.521
15) L3 AR-1232-5	5.160	4.460	40666064	50906225	913.771	919.092
16) L4 AR-1242-1	4.869	3.999	61450328	58916907	498.191	495.987
17) L4 AR-1242-2	4.891	4.017	96335208	87218776	490.185	491.731
18) L4 AR-1242-3	4.955	4.194	63968080	47935418	476.884	488.038
19) L4 AR-1242-4	5.057	4.286	49850121	46802429	481.849	472.512
20) L4 AR-1242-5	5.843	4.827	14427289	50113551	137.131	425.325 #
21) L5 AR-1248-1	4.869	3.999	61450328	58916907	676.220	651.553
22) L5 AR-1248-2	5.160	4.244	40666064	39817909	273.180	284.907
23) L5 AR-1248-3	5.371	4.286	49601911	46802429	290.404	334.680
24) L5 AR-1248-4	5.802	4.460	15146723	50906225	96.055	303.839 #
25) L5 AR-1248-5	5.843	4.869	14427289	12418281	81.014	80.379
26) L6 AR-1254-1	5.773	4.827	42060306	50113551	220.641	205.158
27) L6 AR-1254-2	6.010	4.986	39815571	36538967	141.855	168.792
28) L6 AR-1254-3	6.400	5.424	15940855	70227297	59.471	206.482 #
29) L6 AR-1254-4	6.708	5.651	9118463	5668065	56.602	28.884 #
30) L6 AR-1254-5	7.162	6.093	102.8E6	132.6E6	535.615	430.707
31) L7 AR-1260-1	6.579	5.544	86246939	103.2E6	353.699	396.296
32) L7 AR-1260-2	6.861	5.749	94097684	122.8E6	363.459	400.368
33) L7 AR-1260-3	7.249	5.906	72378720	114.9E6	364.261	392.084
34) L7 AR-1260-4	7.490	6.410	76987077	96218236	368.565	384.816
35) L7 AR-1260-5	7.828	6.674	131.2E6	213.5E6	383.246	391.025
36) L8 AR-1262-1	7.249	6.138	72378720	102.7E6	279.695	309.863
37) L8 AR-1262-2	7.828	6.674	131.2E6	213.5E6	378.230	383.524
38) L8 AR-1262-3	8.139	6.978	79730010	49380272	349.576	206.899 #
39) L8 AR-1262-4	8.217	7.043	24460132	155.1E6	135.514	363.515 #
40) L8 AR-1262-5	8.836	7.582	31956533	53496208	311.965	273.115
41) L9 AR-1268-1	8.139	6.978	79730010	49380272	192.188	74.208 #

Data Path : Z:\pestpcbsrv\HPCHEM1\ECD_R\Data\PR052824\
 Data File : PR067097-1.D
 Signal(s) : Signal #1: ECD1A.ch Signal #2: ECD2B.ch
 Acq On : 28 May 2024 20:58
 Operator : AJ\MA
 Sample : AR1660CCC400
 Misc :
 ALS Vial : 3 Sample Multiplier: 1

Instrument :
 ECD_R
 ClientSampleId :

Integration File signal 1: autoint1.e
 Integration File signal 2: autoint2.e
 Quant Time: May 29 02:14:38 2024
 Quant Method : Z:\pestpcbsrv\HPCHEM1\ECD_R\Method\PR052124CLP.M
 Quant Title : GC EXTRACTABLES
 QLast Update : Wed May 22 04:28:16 2024
 Response via : Initial Calibration
 Integrator: ChemStation

Volume Inj. : 1 µl
 Signal #1 Phase : ZB MR1 Signal #2 Phase: ZB MR2
 Signal #1 Info : 30Mx0.32mmx 0.5µm Signal #2 Info : 30M x 0.32mm x 0.25µm

	Compound	RT#1	RT#2	Resp#1	Resp#2	ng/ml	ng/ml
42)	L9 AR-1268-2	8.217	7.043	24460132	155.1E6	66.016	254.516 #
43)	L9 AR-1268-3	8.434	7.266	1439387	2636935	4.424	4.930
44)	L9 AR-1268-4	8.836	7.582	31956533	53496208	281.388	242.710
45)	L9 AR-1268-5	9.218	7.875	8596824	14289988	10.206	9.580

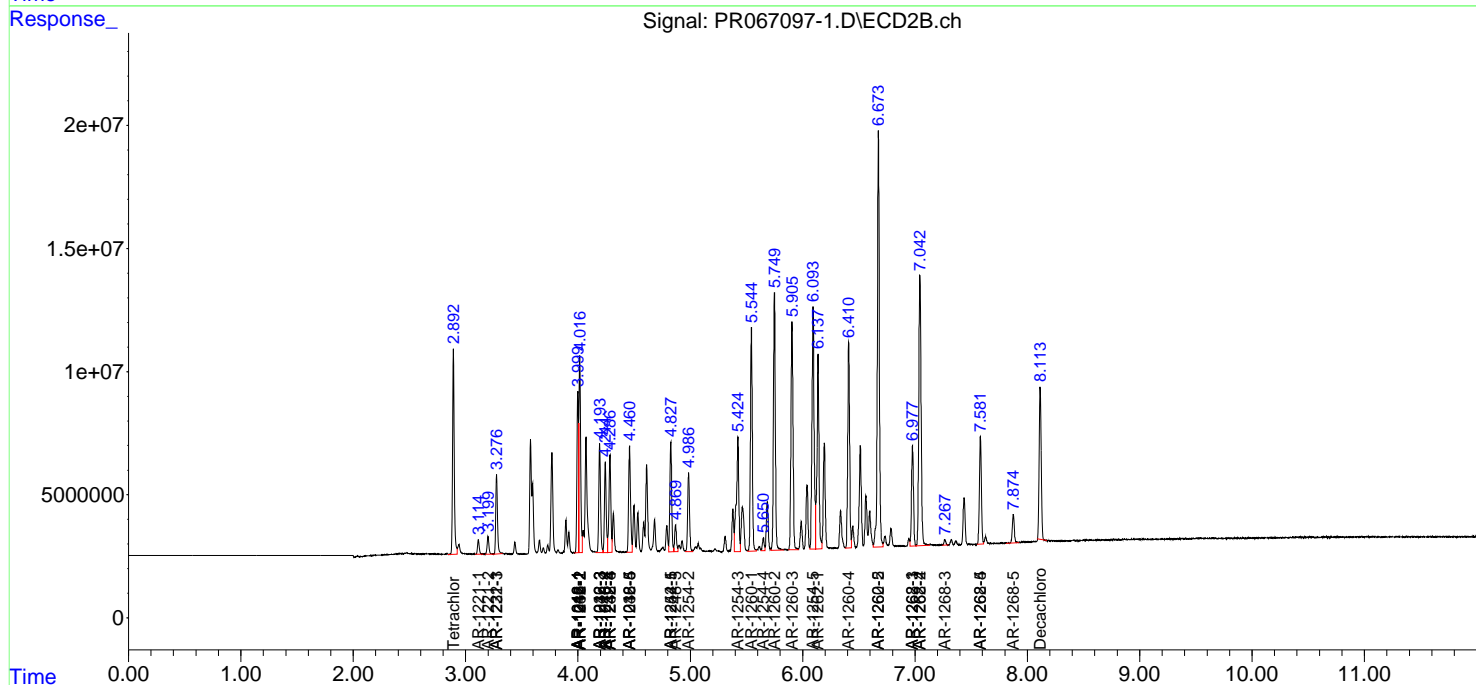
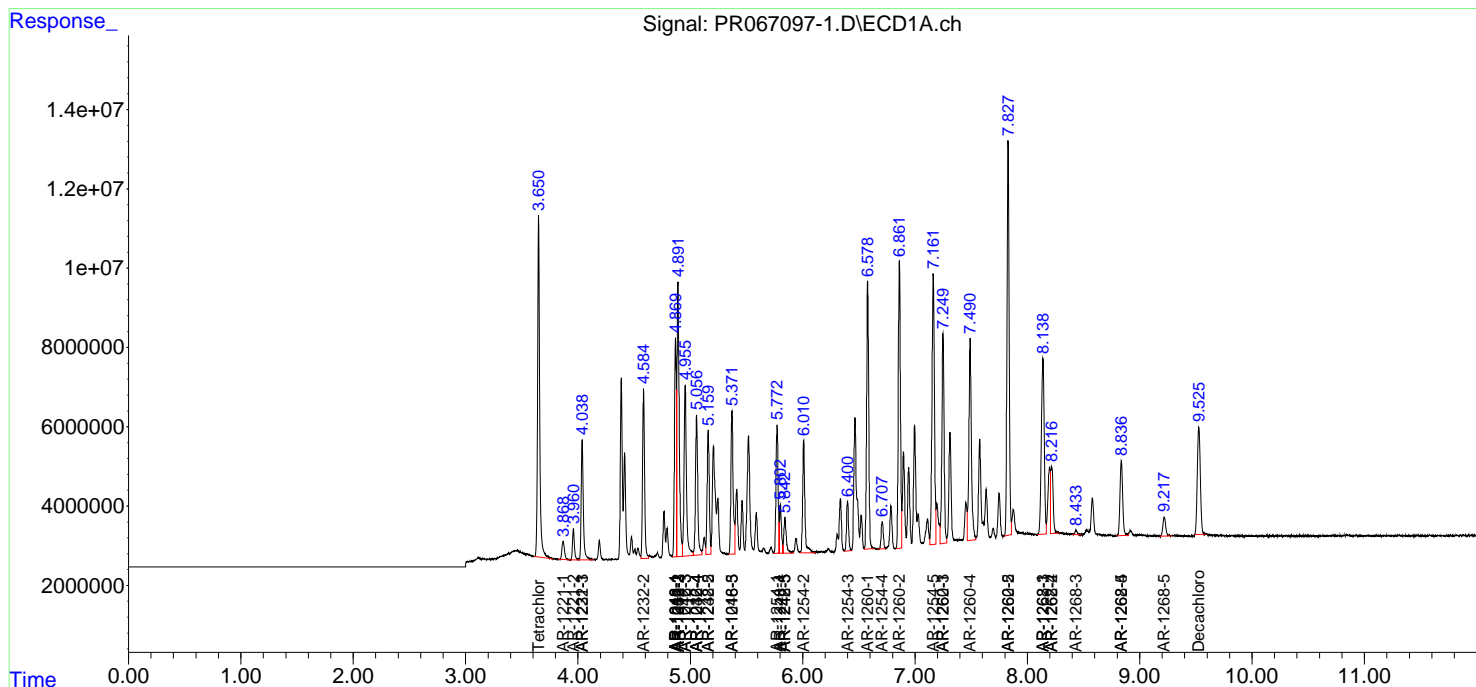
(f)=RT Delta > 1/2 Window (#)=Amounts differ by > 25% (m)=manual int.

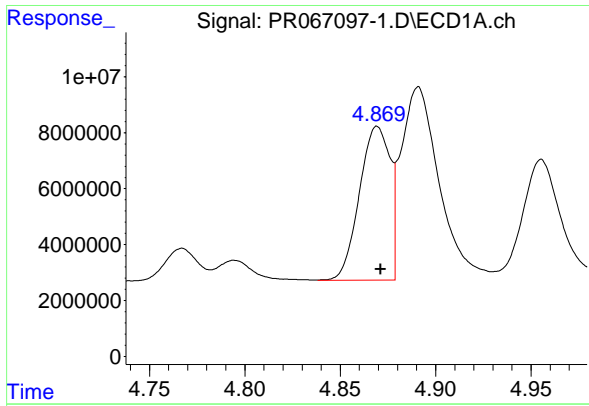
Data Path : Z:\pestpcbsrv\HPCHEM1\ECD_R\Data\PR052824\
 Data File : PR067097-1.D
 Signal(s) : Signal #1: ECD1A.ch Signal #2: ECD2B.ch
 Acq On : 28 May 2024 20:58
 Operator : AJ\MA
 Sample : AR1660CCC400
 Misc :
 ALS Vial : 3 Sample Multiplier: 1

Instrument :
 ECD_R
 ClientSampleId :

Integration File signal 1: autoint1.e
 Integration File signal 2: autoint2.e
 Quant Time: May 29 02:14:38 2024
 Quant Method : Z:\pestpcbsrv\HPCHEM1\ECD_R\Method\PR052124CLP.M
 Quant Title : GC EXTRACTABLES
 QLast Update : Wed May 22 04:28:16 2024
 Response via : Initial Calibration
 Integrator: ChemStation

Volume Inj. : 1 µl
 Signal #1 Phase : ZB MR1 Signal #2 Phase: ZB MR2
 Signal #1 Info : 30Mx0.32mmx 0.5µm Signal #2 Info : 30M x 0.32mm x 0.25µm

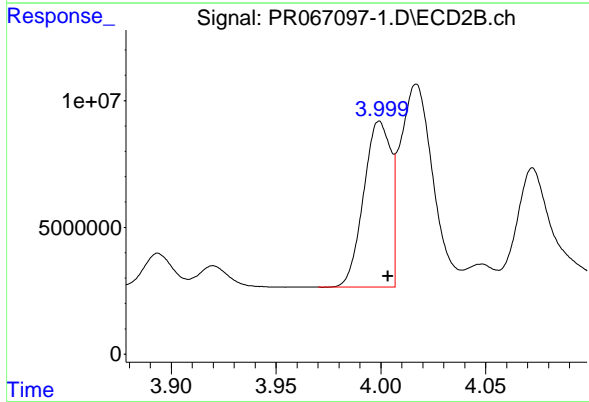




#3 AR-1016-1

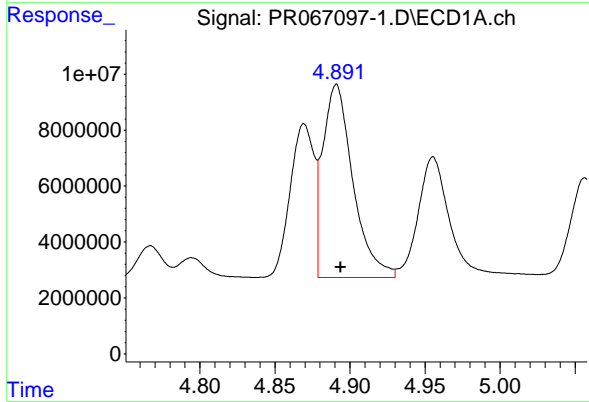
R.T.: 4.869 min
 Delta R.T.: -0.002 min
 Response: 61450328
 Conc: 383.12 ng/ml

Instrument :
 ECD_R
 ClientSampleId :



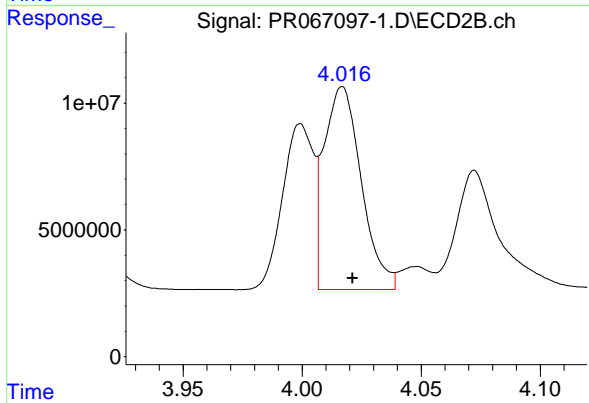
#3 AR-1016-1

R.T.: 3.999 min
 Delta R.T.: -0.004 min
 Response: 58916907
 Conc: 392.47 ng/ml



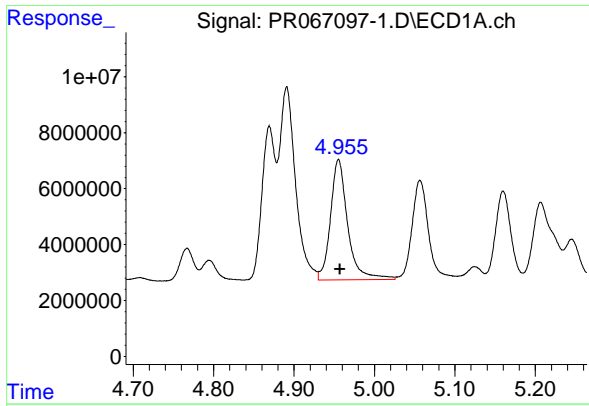
#4 AR-1016-2

R.T.: 4.891 min
 Delta R.T.: -0.003 min
 Response: 96335208
 Conc: 375.21 ng/ml



#4 AR-1016-2

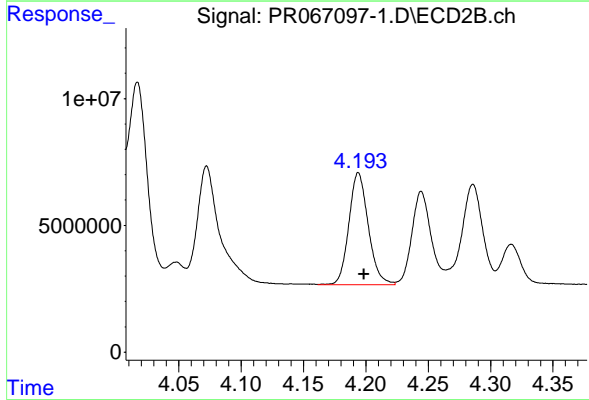
R.T.: 4.017 min
 Delta R.T.: -0.004 min
 Response: 87218776
 Conc: 393.61 ng/ml



#5 AR-1016-3

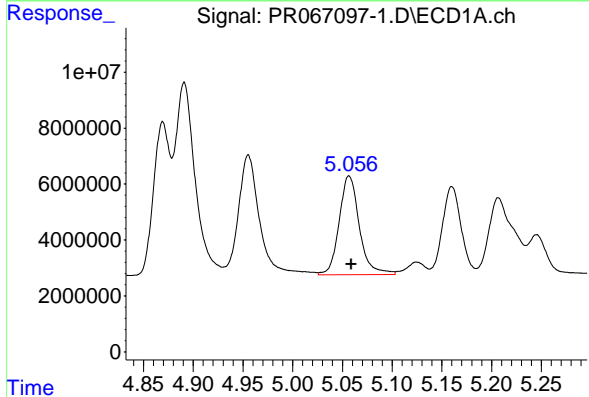
R.T.: 4.955 min
 Delta R.T.: -0.002 min
 Response: 63968080
 Conc: 371.62 ng/ml

Instrument :
 ECD_R
 ClientSampleId :



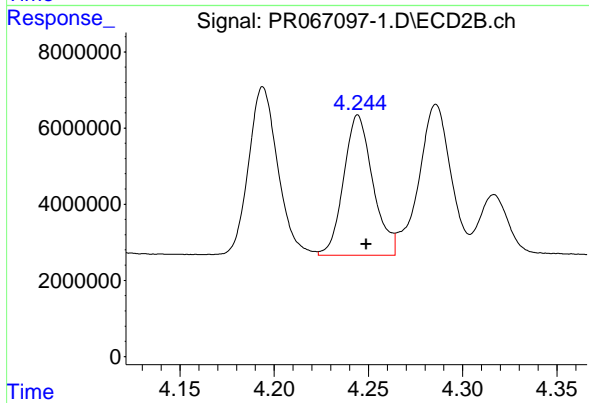
#5 AR-1016-3

R.T.: 4.194 min
 Delta R.T.: -0.004 min
 Response: 47935418
 Conc: 389.07 ng/ml



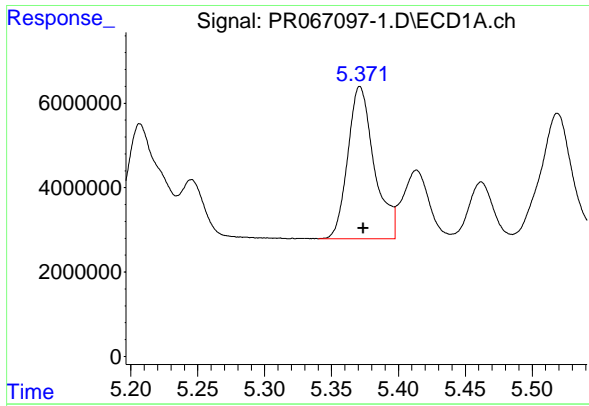
#6 AR-1016-4

R.T.: 5.057 min
 Delta R.T.: -0.002 min
 Response: 49850121
 Conc: 375.84 ng/ml



#6 AR-1016-4

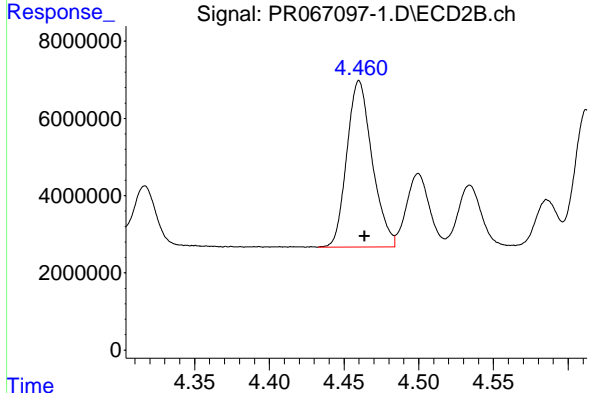
R.T.: 4.244 min
 Delta R.T.: -0.004 min
 Response: 39817909
 Conc: 381.25 ng/ml



#7 AR-1016-5

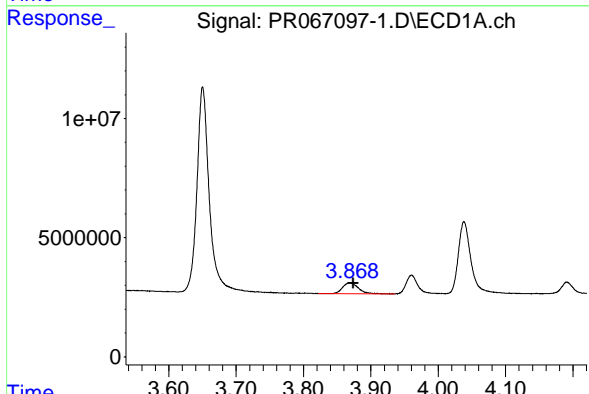
R.T.: 5.371 min
 Delta R.T.: -0.002 min
 Response: 49601911
 Conc: 367.52 ng/ml

Instrument :
 ECD_R
 ClientSampleId :



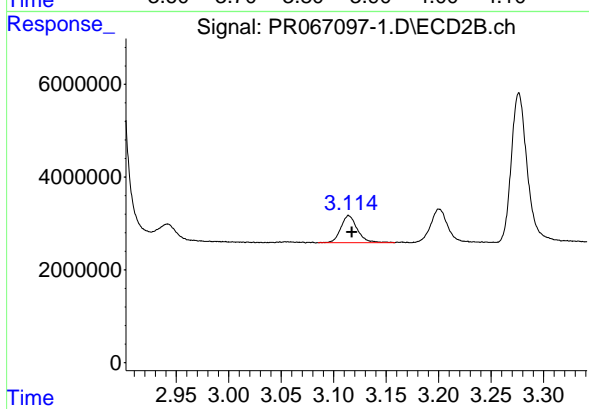
#7 AR-1016-5

R.T.: 4.460 min
 Delta R.T.: -0.004 min
 Response: 50906225
 Conc: 384.36 ng/ml



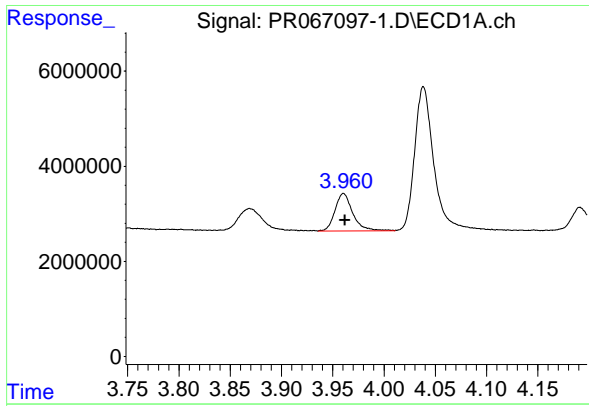
#8 AR-1221-1

R.T.: 3.869 min
 Delta R.T.: -0.005 min
 Response: 7461571
 Conc: 114.35 ng/ml



#8 AR-1221-1

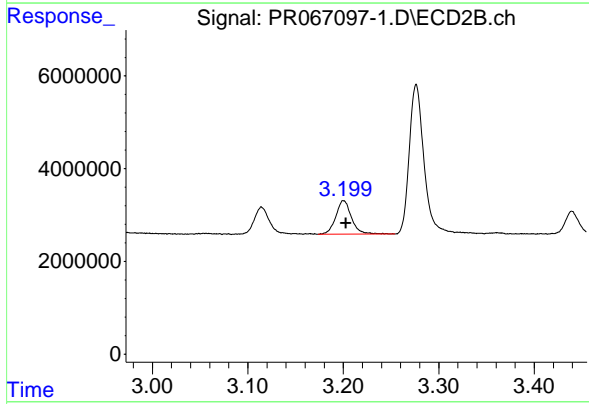
R.T.: 3.114 min
 Delta R.T.: -0.003 min
 Response: 6441413
 Conc: 115.99 ng/ml



#9 AR-1221-2

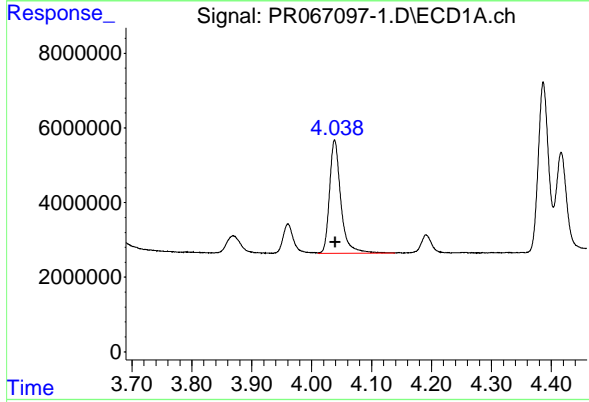
R.T.: 3.961 min
 Delta R.T.: -0.001 min
 Response: 9512920
 Conc: 203.82 ng/ml

Instrument :
 ECD_R
 ClientSampleId :



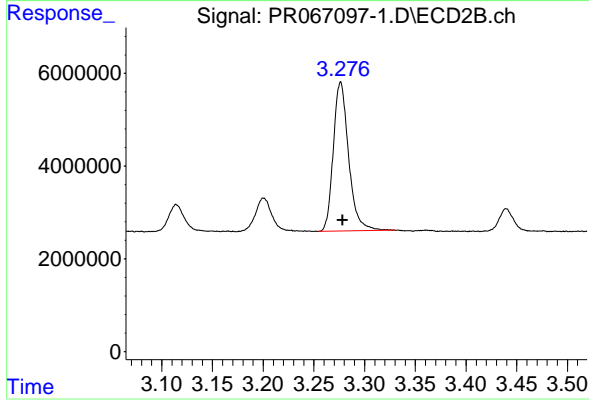
#9 AR-1221-2

R.T.: 3.200 min
 Delta R.T.: -0.002 min
 Response: 8267053
 Conc: 206.53 ng/ml



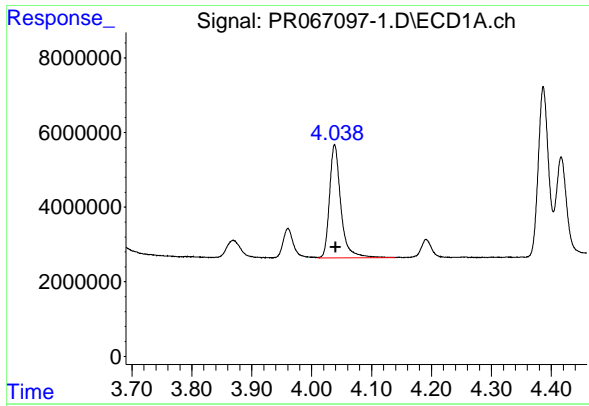
#10 AR-1221-3

R.T.: 4.038 min
 Delta R.T.: 0.000 min
 Response: 39997076
 Conc: 265.11 ng/ml



#10 AR-1221-3

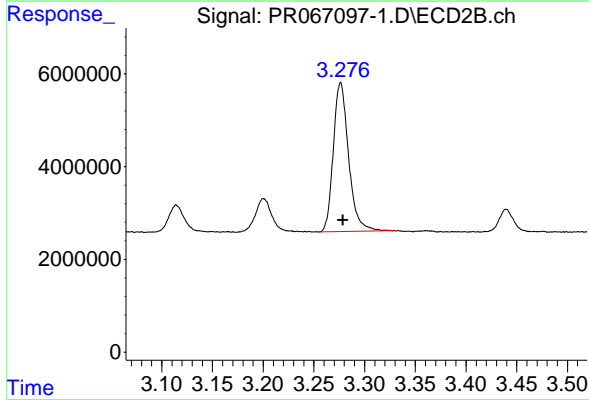
R.T.: 3.276 min
 Delta R.T.: -0.002 min
 Response: 33722790
 Conc: 267.25 ng/ml



#11 AR-1232-1

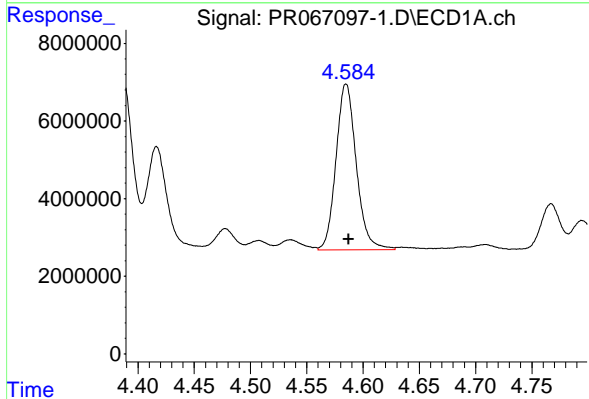
R.T.: 4.038 min
 Delta R.T.: -0.001 min
 Response: 39997076
 Conc: 315.23 ng/ml

Instrument :
 ECD_R
 ClientSampleId :



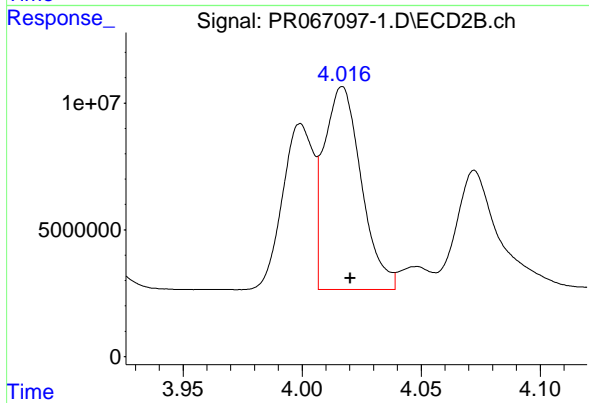
#11 AR-1232-1

R.T.: 3.276 min
 Delta R.T.: -0.002 min
 Response: 33722790
 Conc: 315.10 ng/ml



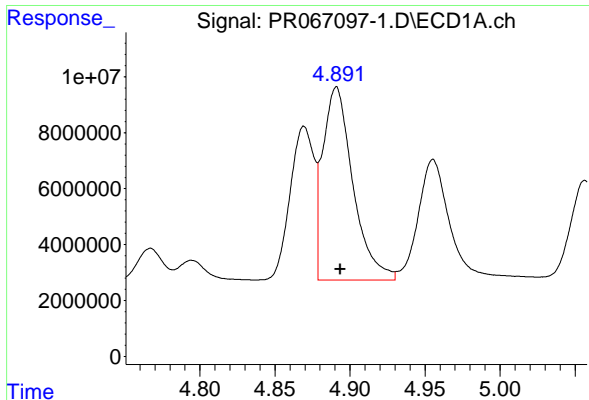
#12 AR-1232-2

R.T.: 4.585 min
 Delta R.T.: -0.002 min
 Response: 53639557
 Conc: 754.95 ng/ml



#12 AR-1232-2

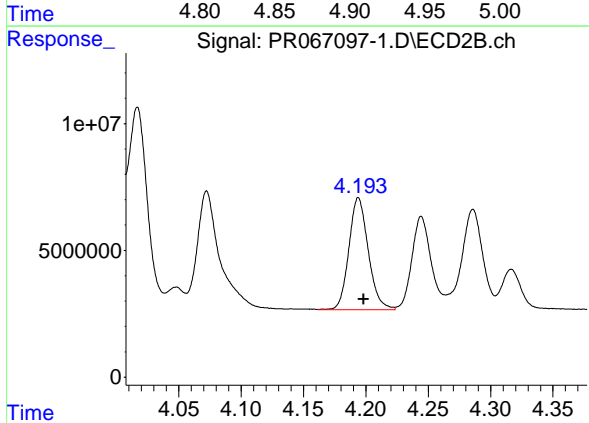
R.T.: 4.017 min
 Delta R.T.: -0.003 min
 Response: 87218776
 Conc: 841.85 ng/ml



#13 AR-1232-3

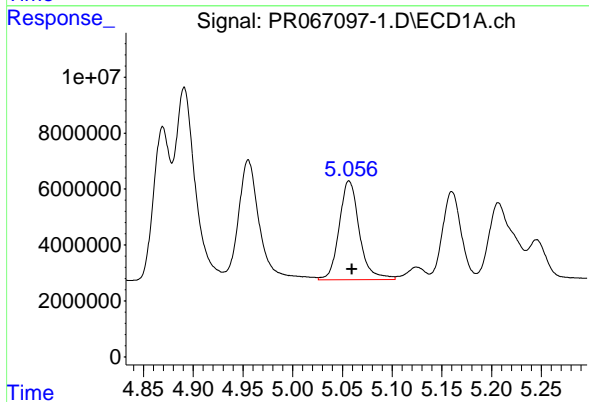
R.T.: 4.891 min
 Delta R.T.: -0.003 min
 Response: 96335208
 Conc: 843.11 ng/ml

Instrument :
 ECD_R
 ClientSampleId :



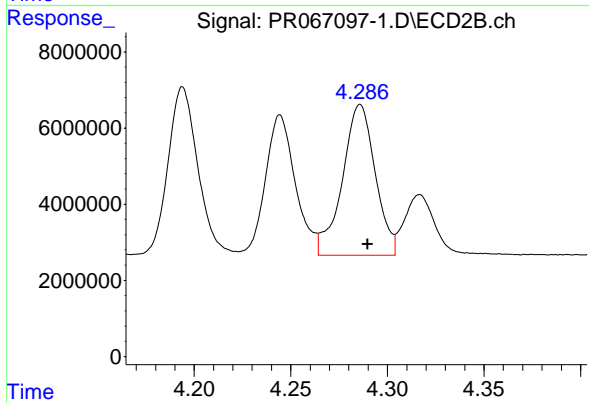
#13 AR-1232-3

R.T.: 4.194 min
 Delta R.T.: -0.004 min
 Response: 47935418
 Conc: 866.85 ng/ml



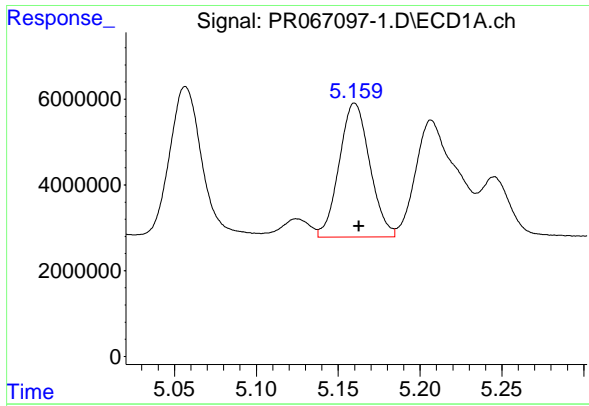
#14 AR-1232-4

R.T.: 5.057 min
 Delta R.T.: -0.003 min
 Response: 49850121
 Conc: 861.38 ng/ml



#14 AR-1232-4

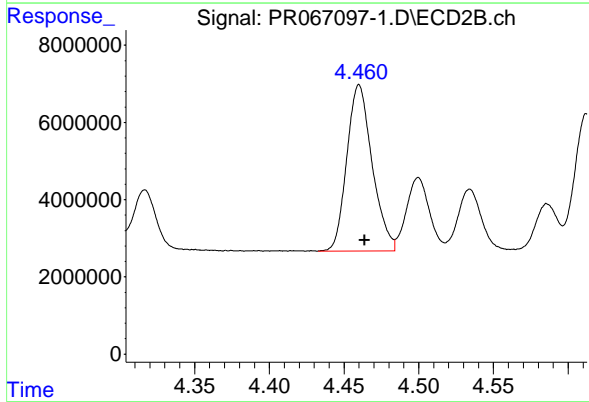
R.T.: 4.286 min
 Delta R.T.: -0.004 min
 Response: 46802429
 Conc: 915.52 ng/ml



#15 AR-1232-5

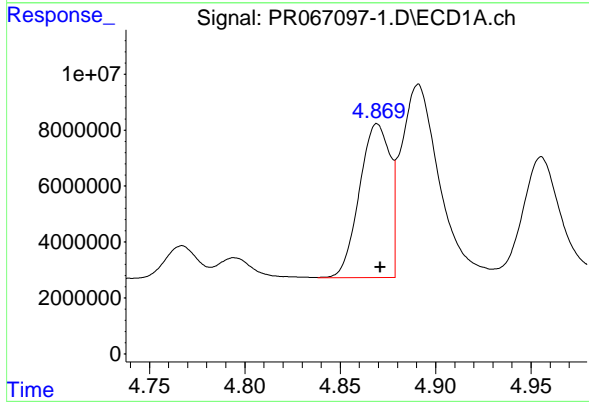
R.T.: 5.160 min
 Delta R.T.: -0.003 min
 Response: 40666064
 Conc: 913.77 ng/ml

Instrument :
 ECD_R
 ClientSampleId :



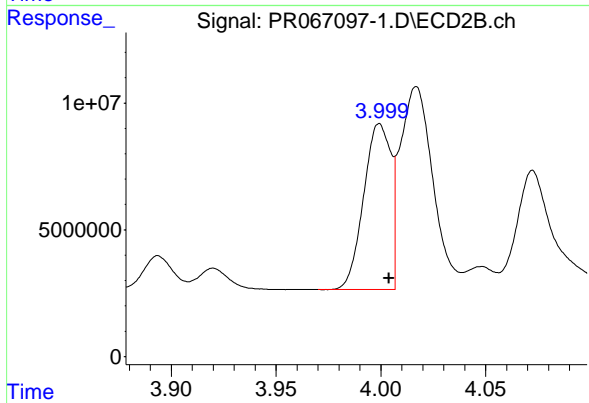
#15 AR-1232-5

R.T.: 4.460 min
 Delta R.T.: -0.004 min
 Response: 50906225
 Conc: 919.09 ng/ml



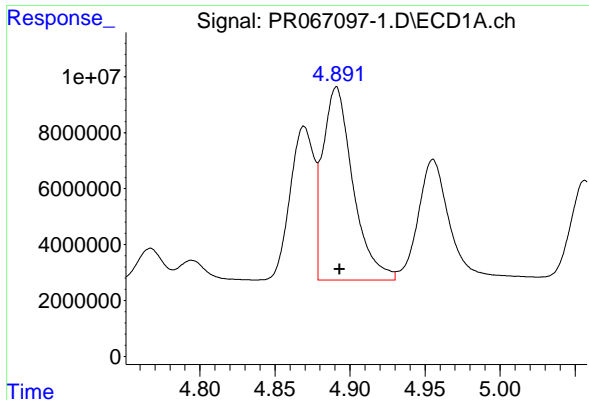
#16 AR-1242-1

R.T.: 4.869 min
 Delta R.T.: -0.002 min
 Response: 61450328
 Conc: 498.19 ng/ml



#16 AR-1242-1

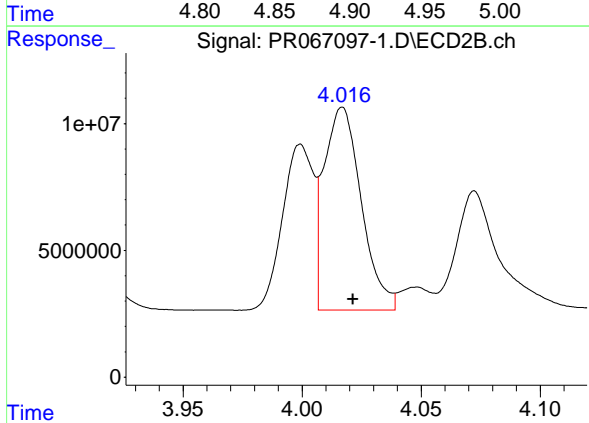
R.T.: 3.999 min
 Delta R.T.: -0.004 min
 Response: 58916907
 Conc: 495.99 ng/ml



#17 AR-1242-2

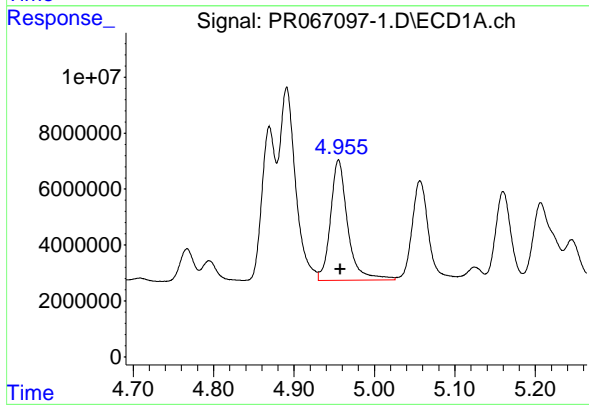
R.T.: 4.891 min
 Delta R.T.: -0.002 min
 Response: 96335208
 Conc: 490.19 ng/ml

Instrument :
 ECD_R
 ClientSampleId :



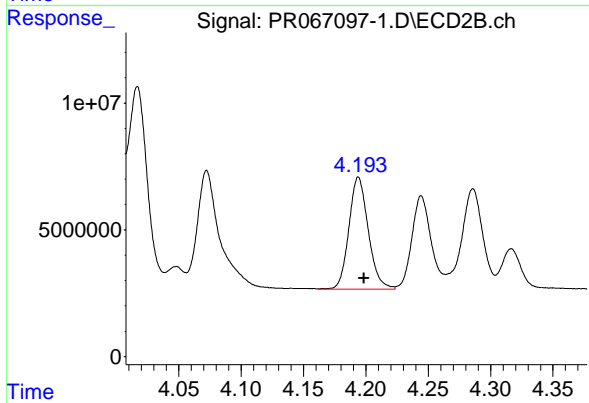
#17 AR-1242-2

R.T.: 4.017 min
 Delta R.T.: -0.004 min
 Response: 87218776
 Conc: 491.73 ng/ml



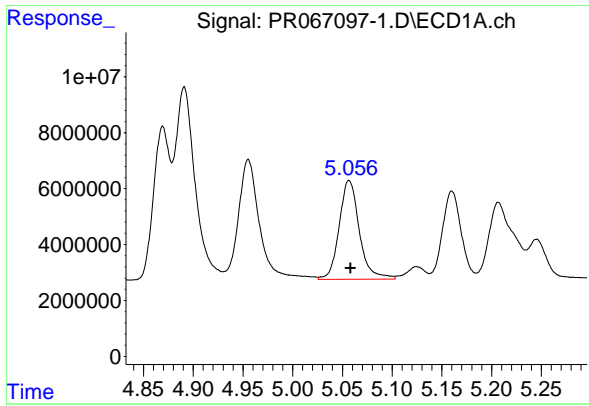
#18 AR-1242-3

R.T.: 4.955 min
 Delta R.T.: -0.002 min
 Response: 63968080
 Conc: 476.88 ng/ml



#18 AR-1242-3

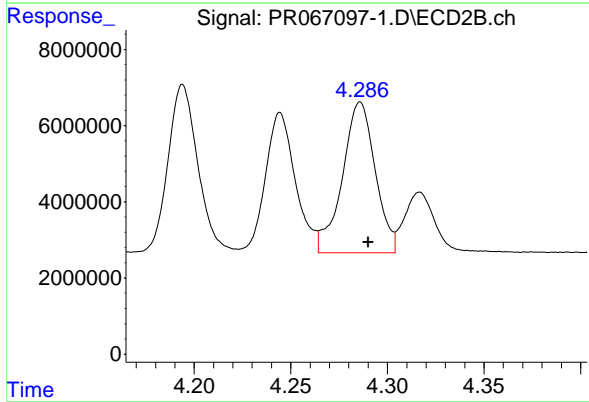
R.T.: 4.194 min
 Delta R.T.: -0.004 min
 Response: 47935418
 Conc: 488.04 ng/ml



#19 AR-1242-4

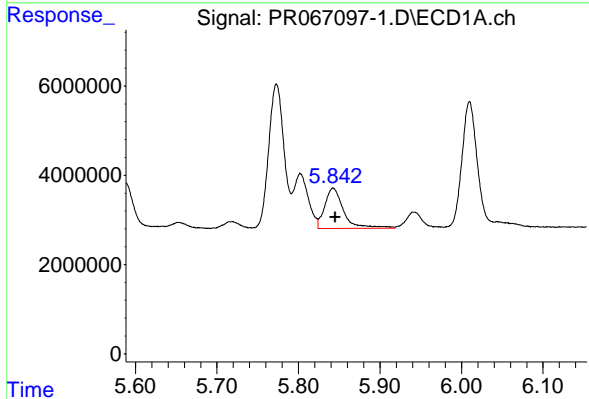
R.T.: 5.057 min
 Delta R.T.: -0.002 min
 Response: 49850121
 Conc: 481.85 ng/ml

Instrument : ECD_R
 ClientSampleId :



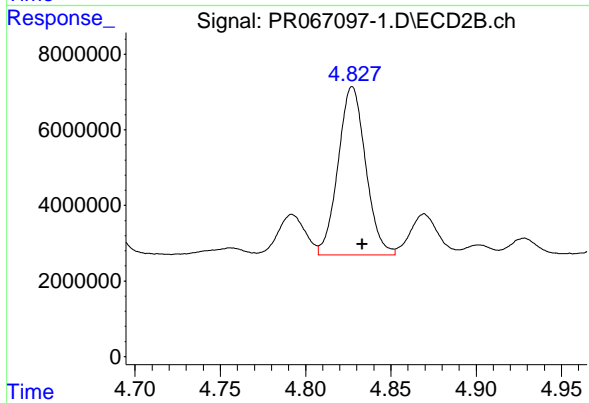
#19 AR-1242-4

R.T.: 4.286 min
 Delta R.T.: -0.004 min
 Response: 46802429
 Conc: 472.51 ng/ml



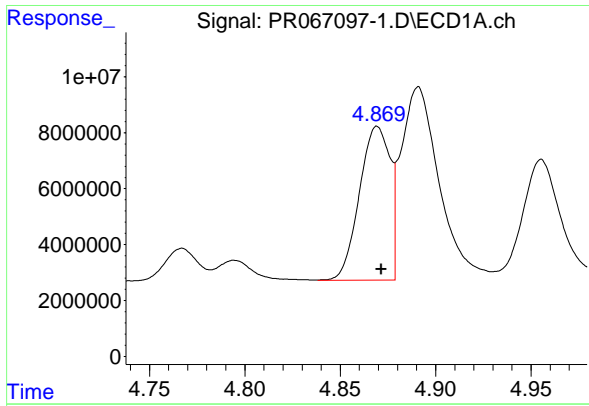
#20 AR-1242-5

R.T.: 5.843 min
 Delta R.T.: -0.003 min
 Response: 14427289
 Conc: 137.13 ng/ml



#20 AR-1242-5

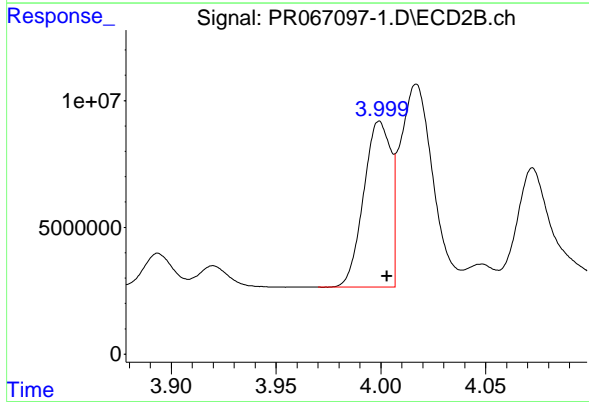
R.T.: 4.827 min
 Delta R.T.: -0.006 min
 Response: 50113551
 Conc: 425.33 ng/ml



#21 AR-1248-1

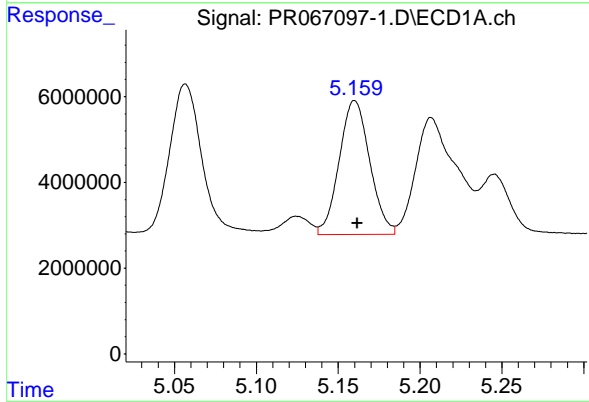
R.T.: 4.869 min
 Delta R.T.: -0.002 min
 Response: 61450328
 Conc: 676.22 ng/ml

Instrument :
 ECD_R
 ClientSampleId :



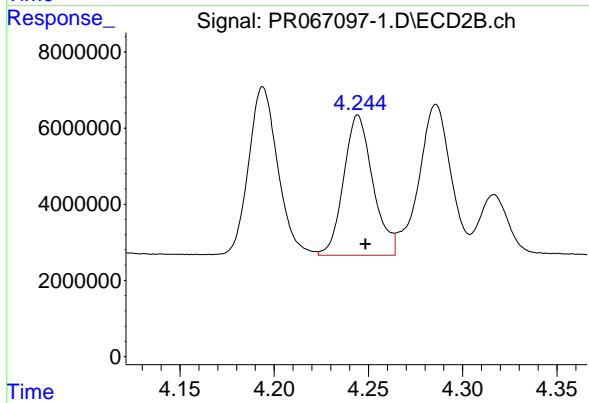
#21 AR-1248-1

R.T.: 3.999 min
 Delta R.T.: -0.004 min
 Response: 58916907
 Conc: 651.55 ng/ml



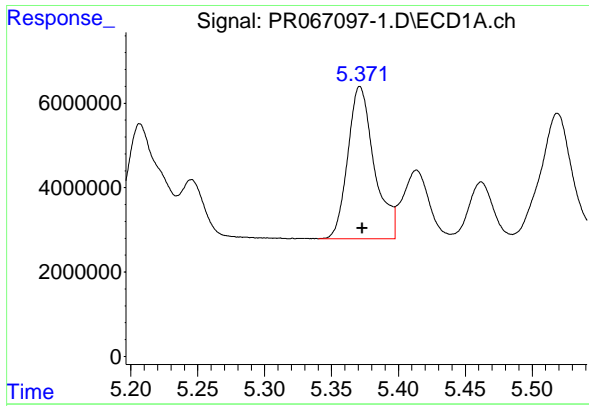
#22 AR-1248-2

R.T.: 5.160 min
 Delta R.T.: -0.002 min
 Response: 40666064
 Conc: 273.18 ng/ml



#22 AR-1248-2

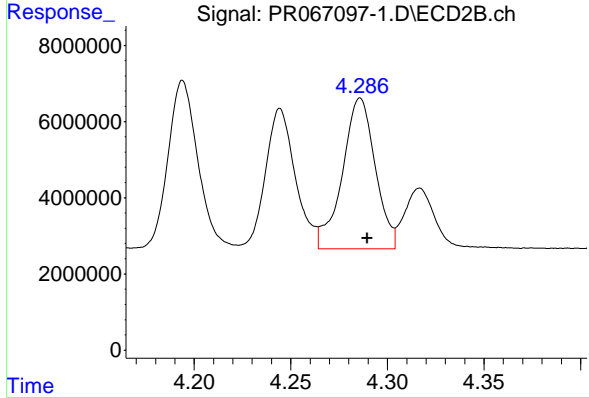
R.T.: 4.244 min
 Delta R.T.: -0.004 min
 Response: 39817909
 Conc: 284.91 ng/ml



#23 AR-1248-3

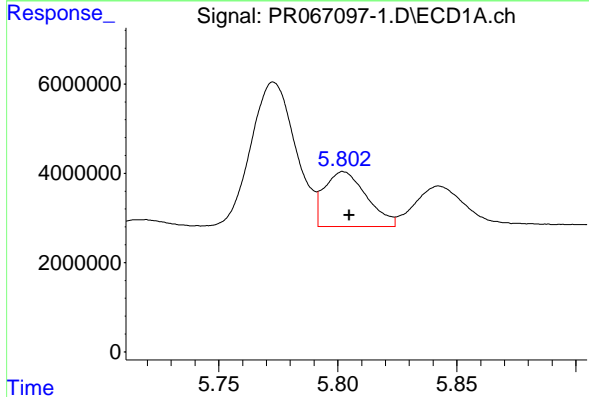
R.T.: 5.371 min
 Delta R.T.: -0.002 min
 Response: 49601911
 Conc: 290.40 ng/ml

Instrument :
 ECD_R
 ClientSampleId :



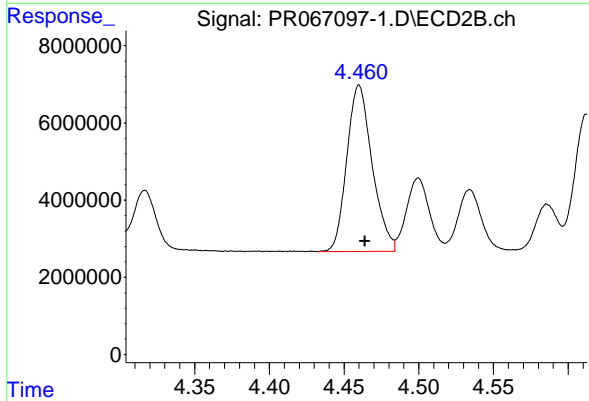
#23 AR-1248-3

R.T.: 4.286 min
 Delta R.T.: -0.004 min
 Response: 46802429
 Conc: 334.68 ng/ml



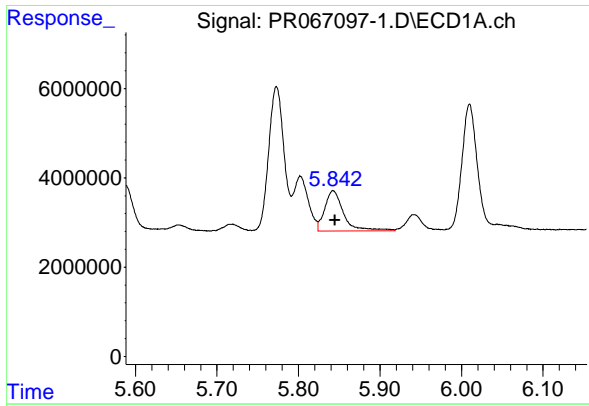
#24 AR-1248-4

R.T.: 5.802 min
 Delta R.T.: -0.003 min
 Response: 15146723
 Conc: 96.05 ng/ml



#24 AR-1248-4

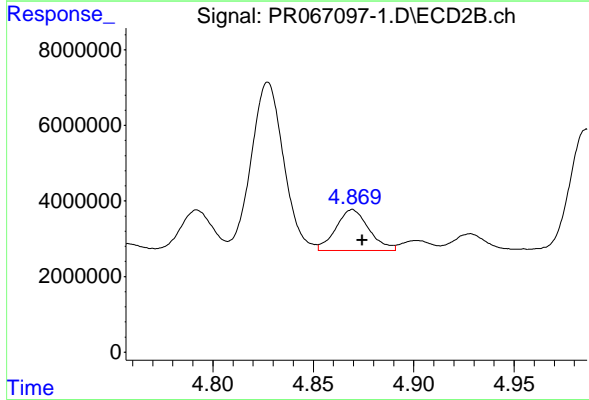
R.T.: 4.460 min
 Delta R.T.: -0.004 min
 Response: 50906225
 Conc: 303.84 ng/ml



#25 AR-1248-5

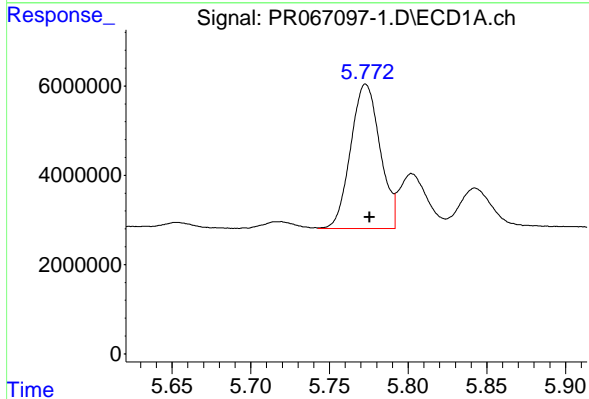
R.T.: 5.843 min
 Delta R.T.: -0.002 min
 Response: 14427289
 Conc: 81.01 ng/ml

Instrument :
 ECD_R
 ClientSampleId :



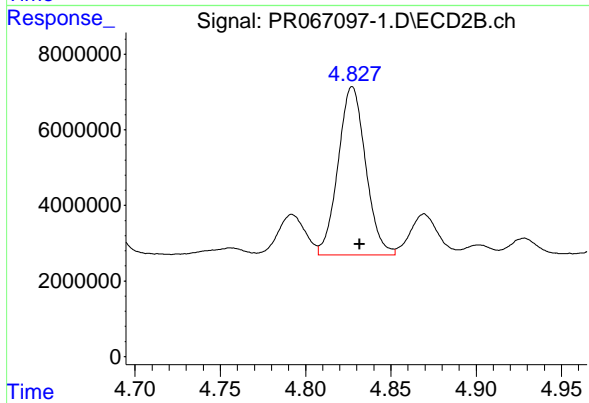
#25 AR-1248-5

R.T.: 4.869 min
 Delta R.T.: -0.005 min
 Response: 12418281
 Conc: 80.38 ng/ml



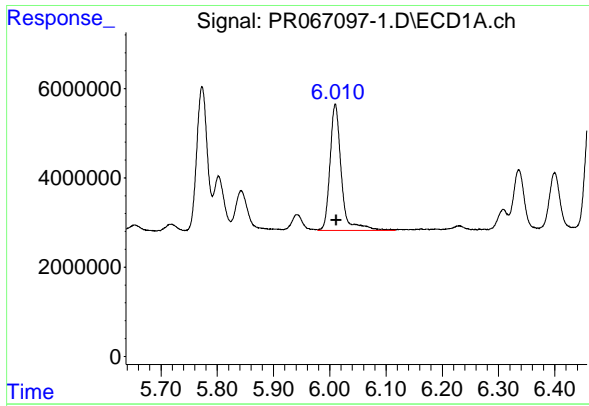
#26 AR-1254-1

R.T.: 5.773 min
 Delta R.T.: -0.002 min
 Response: 42060306
 Conc: 220.64 ng/ml



#26 AR-1254-1

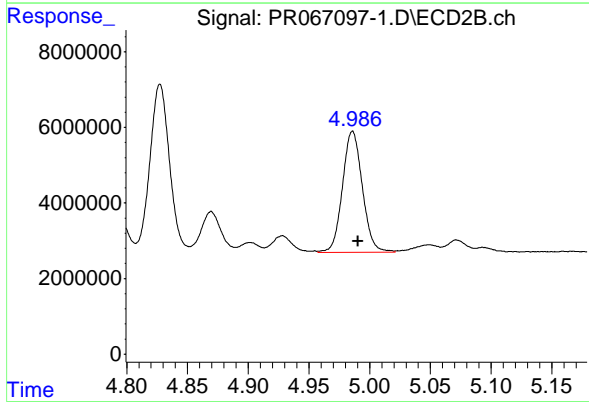
R.T.: 4.827 min
 Delta R.T.: -0.004 min
 Response: 50113551
 Conc: 205.16 ng/ml



#27 AR-1254-2

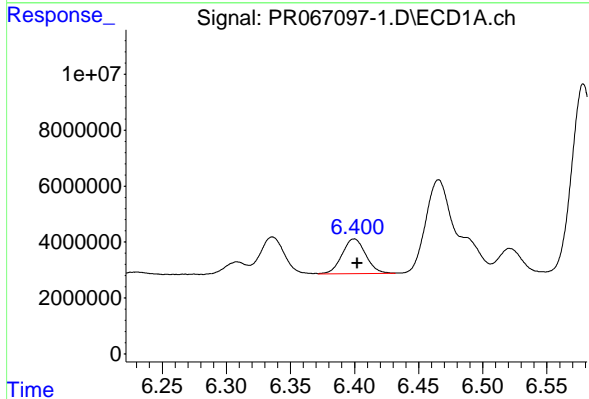
R.T.: 6.010 min
 Delta R.T.: -0.002 min
 Response: 39815571
 Conc: 141.85 ng/ml

Instrument : ECD_R
 ClientSampleId :



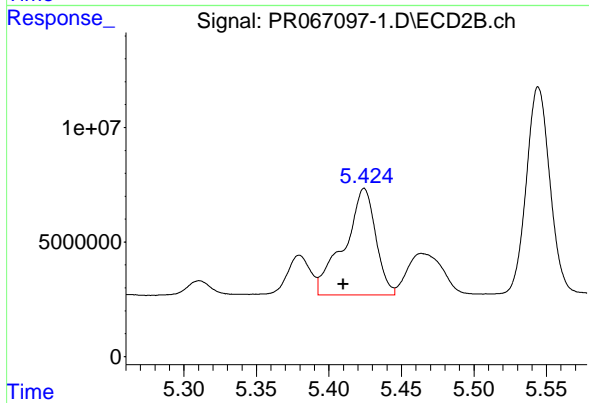
#27 AR-1254-2

R.T.: 4.986 min
 Delta R.T.: -0.005 min
 Response: 36538967
 Conc: 168.79 ng/ml



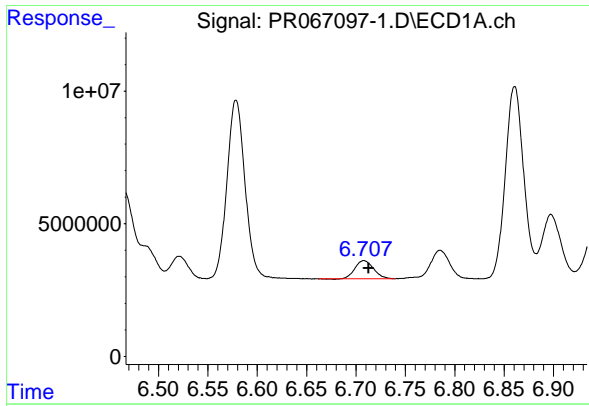
#28 AR-1254-3

R.T.: 6.400 min
 Delta R.T.: -0.002 min
 Response: 15940855
 Conc: 59.47 ng/ml



#28 AR-1254-3

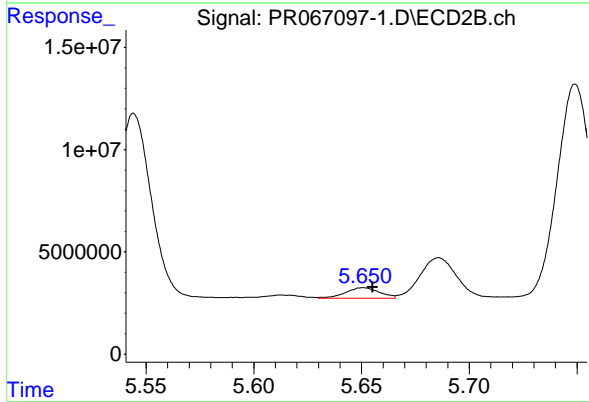
R.T.: 5.424 min
 Delta R.T.: 0.014 min
 Response: 70227297
 Conc: 206.48 ng/ml



#29 AR-1254-4

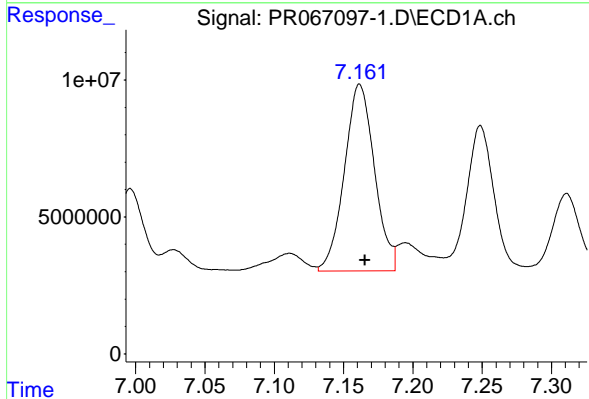
R.T.: 6.708 min
 Delta R.T.: -0.005 min
 Response: 9118463
 Conc: 56.60 ng/ml

Instrument :
 ECD_R
 ClientSampleId :



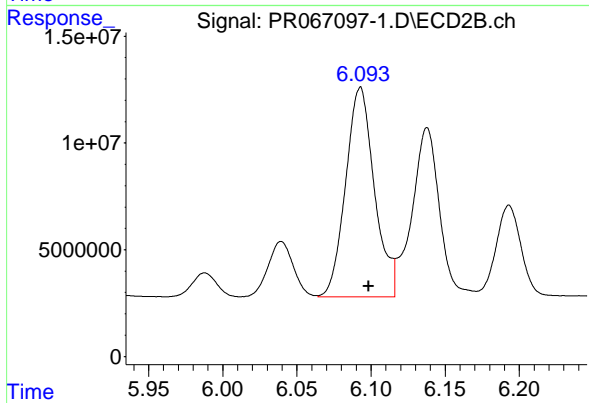
#29 AR-1254-4

R.T.: 5.651 min
 Delta R.T.: -0.005 min
 Response: 5668065
 Conc: 28.88 ng/ml



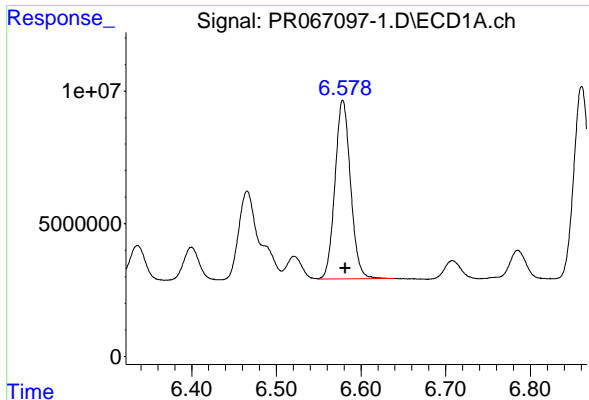
#30 AR-1254-5

R.T.: 7.162 min
 Delta R.T.: -0.004 min
 Response: 102841516
 Conc: 535.62 ng/ml



#30 AR-1254-5

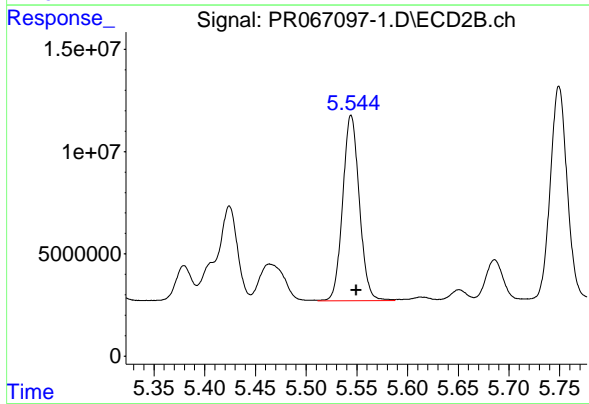
R.T.: 6.093 min
 Delta R.T.: -0.006 min
 Response: 132645301
 Conc: 430.71 ng/ml



#31 AR-1260-1

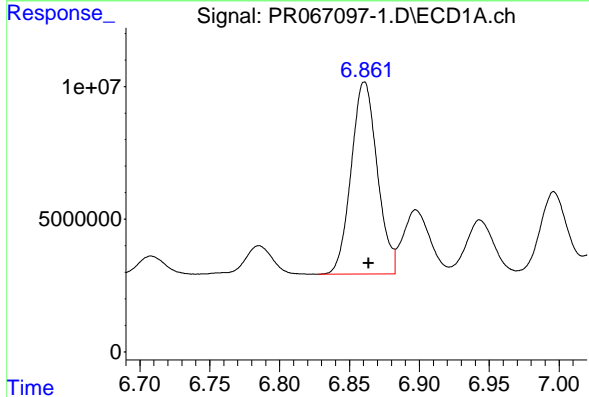
R.T.: 6.579 min
Delta R.T.: -0.003 min
Response: 86246939
Conc: 353.70 ng/ml

Instrument : ECD_R
ClientSampleId :



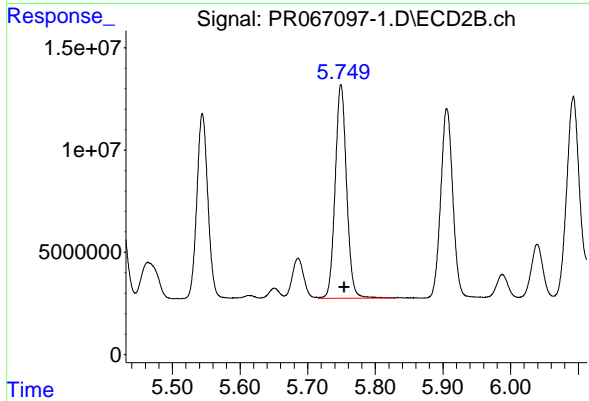
#31 AR-1260-1

R.T.: 5.544 min
Delta R.T.: -0.005 min
Response: 103248347
Conc: 396.30 ng/ml



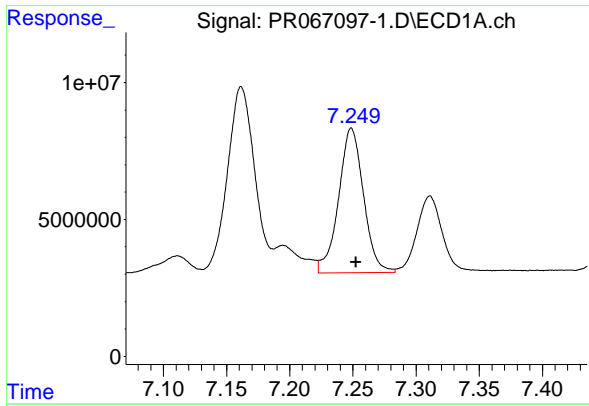
#32 AR-1260-2

R.T.: 6.861 min
Delta R.T.: -0.003 min
Response: 94097684
Conc: 363.46 ng/ml



#32 AR-1260-2

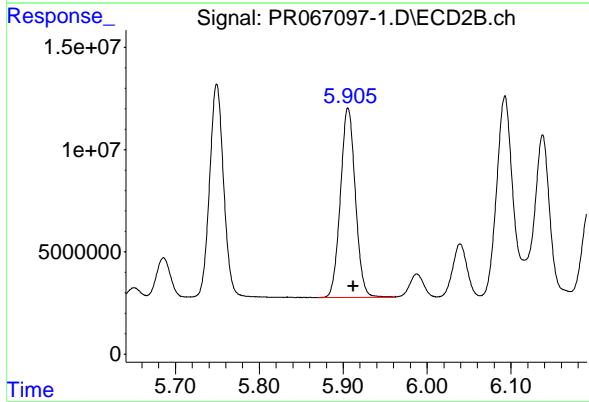
R.T.: 5.749 min
Delta R.T.: -0.005 min
Response: 122759881
Conc: 400.37 ng/ml



#33 AR-1260-3

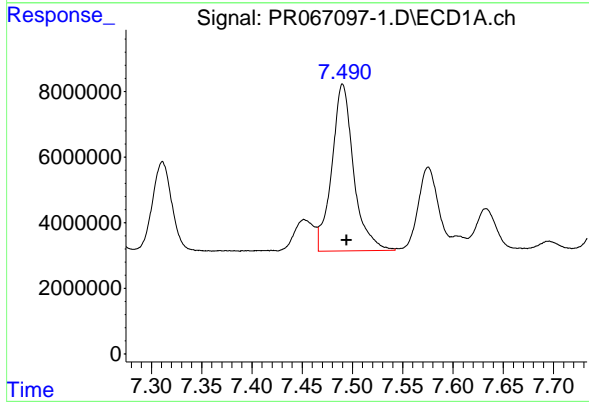
R.T.: 7.249 min
 Delta R.T.: -0.004 min
 Response: 72378720
 Conc: 364.26 ng/ml

Instrument :
 ECD_R
 ClientSampleId :



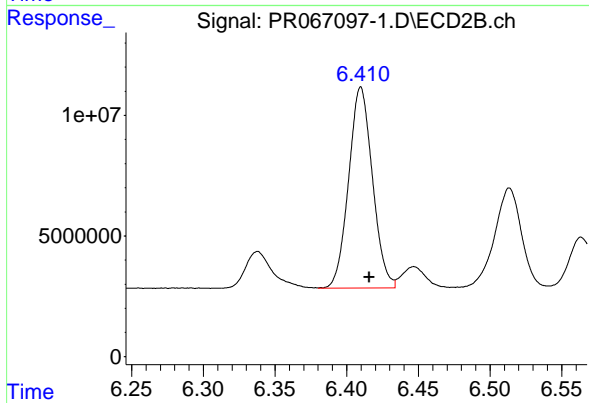
#33 AR-1260-3

R.T.: 5.906 min
 Delta R.T.: -0.006 min
 Response: 114933929
 Conc: 392.08 ng/ml



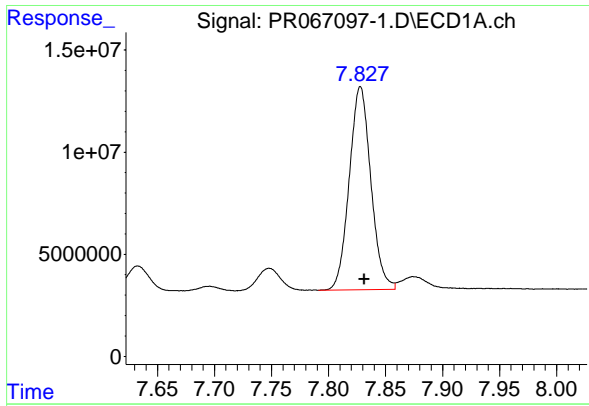
#34 AR-1260-4

R.T.: 7.490 min
 Delta R.T.: -0.004 min
 Response: 76987077
 Conc: 368.56 ng/ml



#34 AR-1260-4

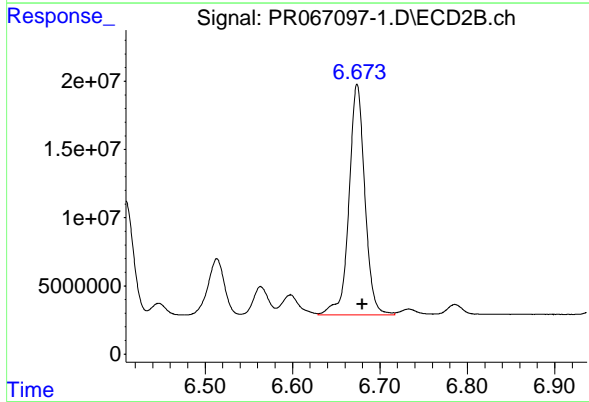
R.T.: 6.410 min
 Delta R.T.: -0.006 min
 Response: 96218236
 Conc: 384.82 ng/ml



#35 AR-1260-5

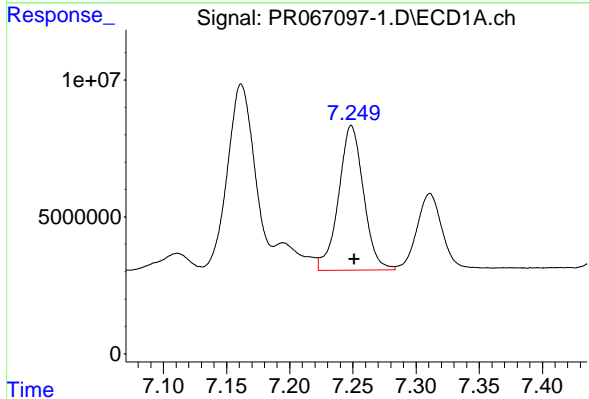
R.T.: 7.828 min
Delta R.T.: -0.003 min
Response: 131179893
Conc: 383.25 ng/ml

Instrument :
ECD_R
ClientSampleId :



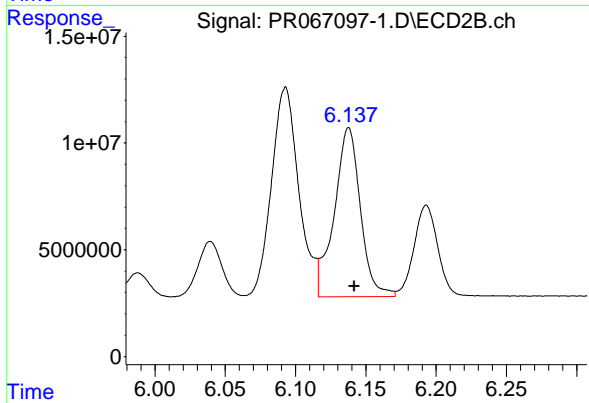
#35 AR-1260-5

R.T.: 6.674 min
Delta R.T.: -0.006 min
Response: 213455257
Conc: 391.03 ng/ml



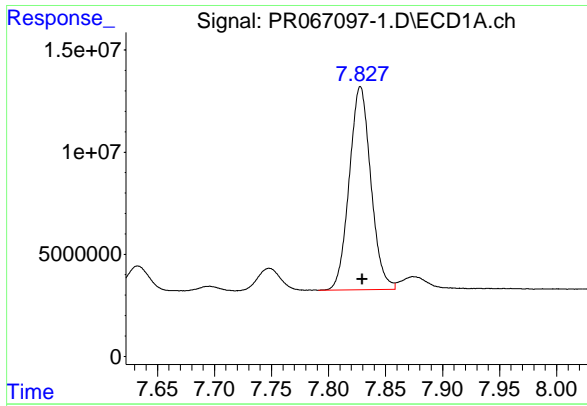
#36 AR-1262-1

R.T.: 7.249 min
Delta R.T.: -0.002 min
Response: 72378720
Conc: 279.70 ng/ml



#36 AR-1262-1

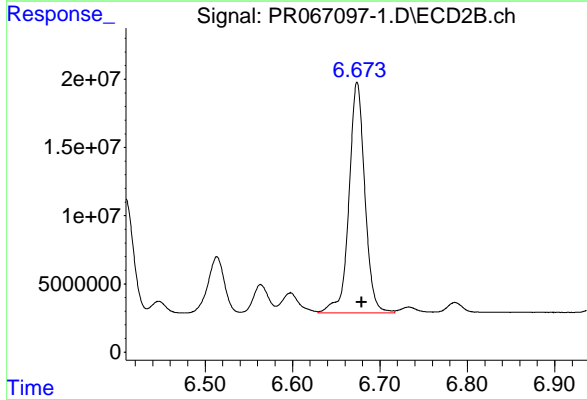
R.T.: 6.138 min
Delta R.T.: -0.004 min
Response: 102708806
Conc: 309.86 ng/ml



#37 AR-1262-2

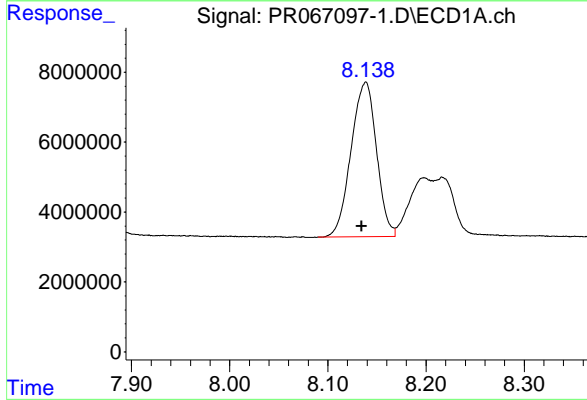
R.T.: 7.828 min
 Delta R.T.: -0.002 min
 Response: 131179893
 Conc: 378.23 ng/ml

Instrument :
 ECD_R
 ClientSampleId :



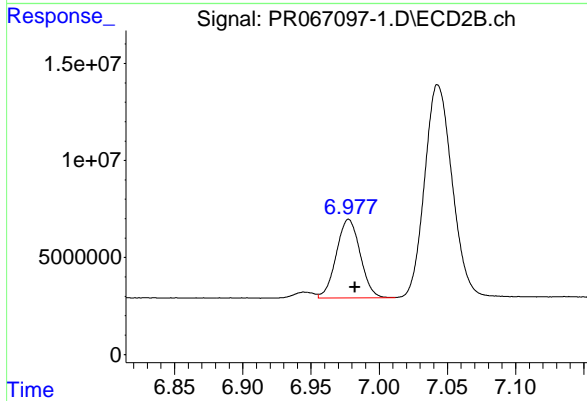
#37 AR-1262-2

R.T.: 6.674 min
 Delta R.T.: -0.005 min
 Response: 213455257
 Conc: 383.52 ng/ml



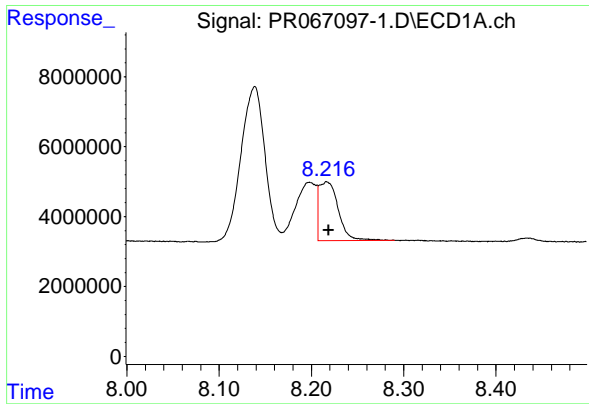
#38 AR-1262-3

R.T.: 8.139 min
 Delta R.T.: 0.004 min
 Response: 79730010
 Conc: 349.58 ng/ml



#38 AR-1262-3

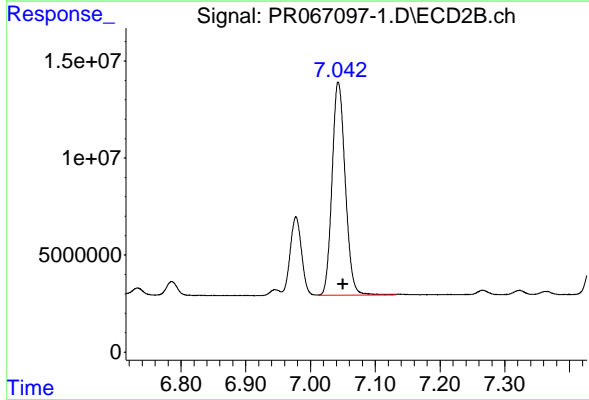
R.T.: 6.978 min
 Delta R.T.: -0.005 min
 Response: 49380272
 Conc: 206.90 ng/ml



#39 AR-1262-4

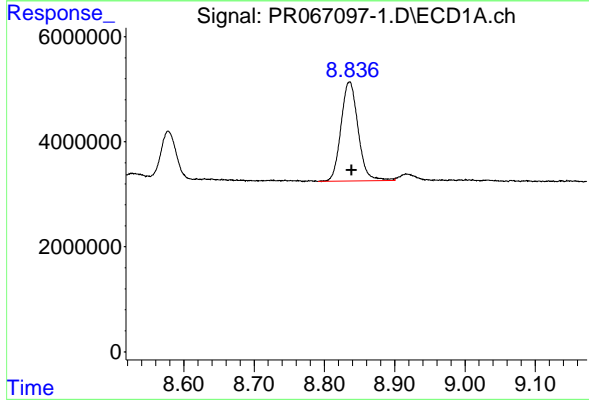
R.T.: 8.217 min
Delta R.T.: -0.002 min
Response: 24460132
Conc: 135.51 ng/ml

Instrument :
ECD_R
ClientSampleId :



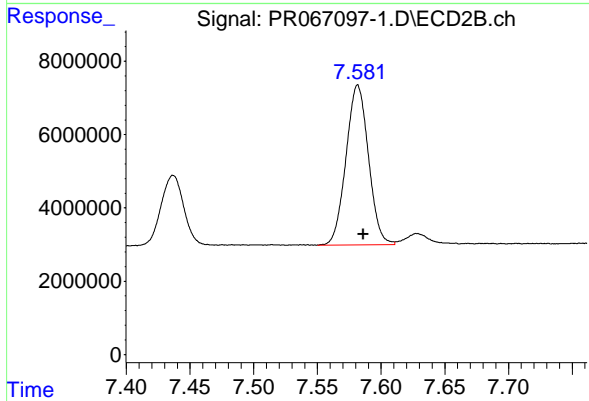
#39 AR-1262-4

R.T.: 7.043 min
Delta R.T.: -0.007 min
Response: 155117314
Conc: 363.51 ng/ml



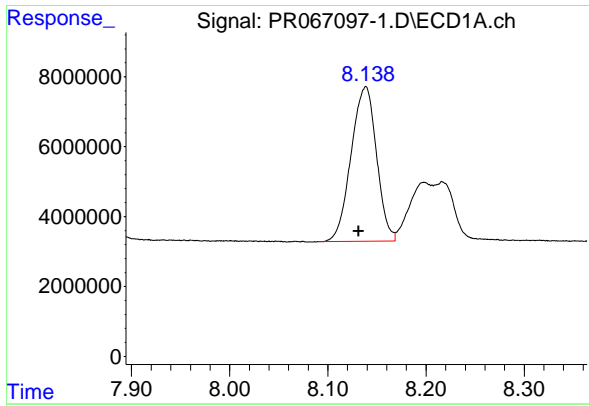
#40 AR-1262-5

R.T.: 8.836 min
Delta R.T.: -0.003 min
Response: 31956533
Conc: 311.97 ng/ml



#40 AR-1262-5

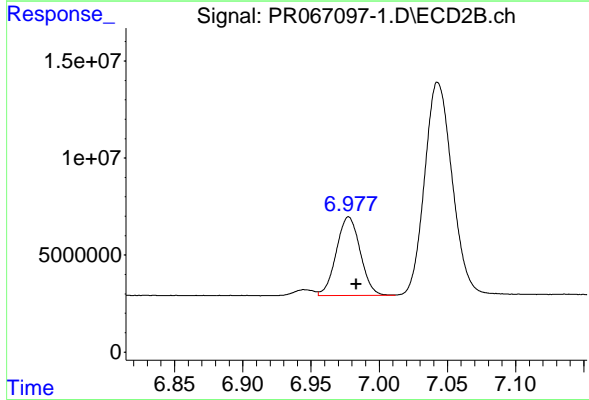
R.T.: 7.582 min
Delta R.T.: -0.004 min
Response: 53496208
Conc: 273.12 ng/ml



#41 AR-1268-1

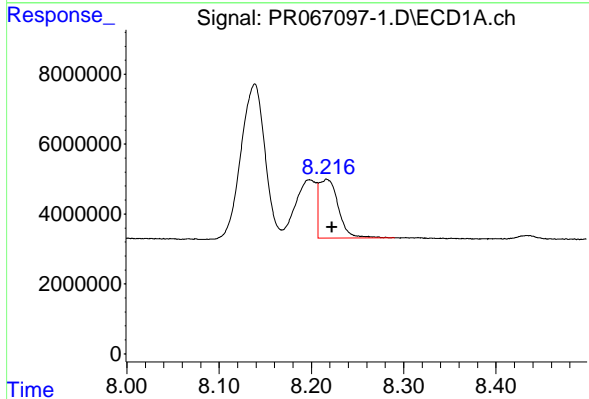
R.T.: 8.139 min
 Delta R.T.: 0.007 min
 Response: 79730010
 Conc: 192.19 ng/ml

Instrument :
 ECD_R
 ClientSampleId :



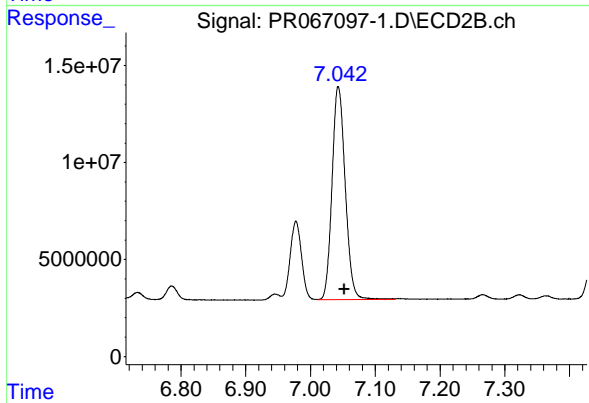
#41 AR-1268-1

R.T.: 6.978 min
 Delta R.T.: -0.006 min
 Response: 49380272
 Conc: 74.21 ng/ml



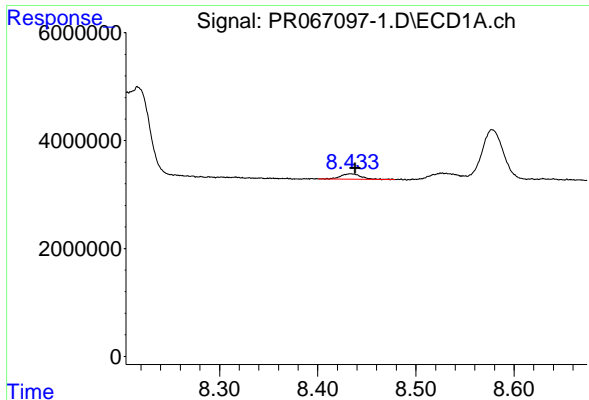
#42 AR-1268-2

R.T.: 8.217 min
 Delta R.T.: -0.005 min
 Response: 24460132
 Conc: 66.02 ng/ml



#42 AR-1268-2

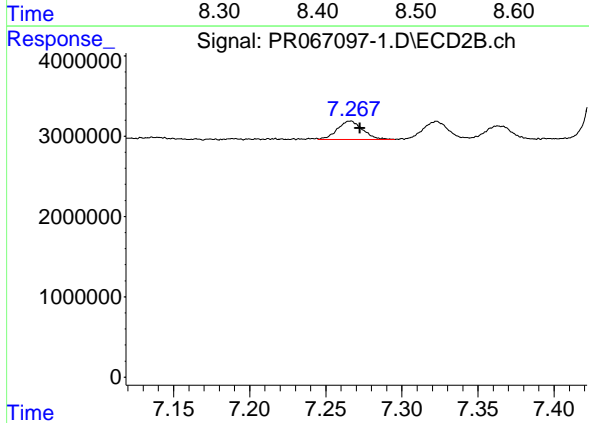
R.T.: 7.043 min
 Delta R.T.: -0.009 min
 Response: 155117314
 Conc: 254.52 ng/ml



#43 AR-1268-3

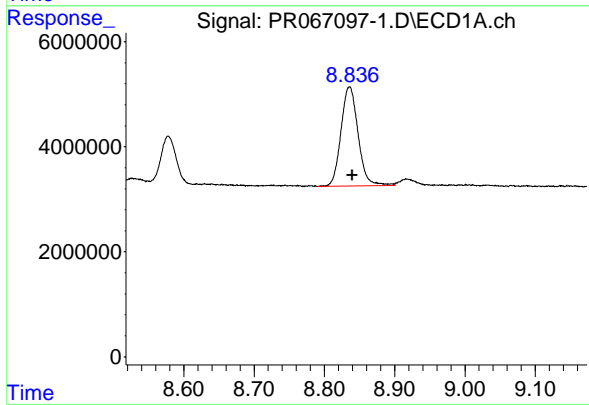
R.T.: 8.434 min
 Delta R.T.: -0.004 min
 Response: 1439387
 Conc: 4.42 ng/ml

Instrument :
 ECD_R
 ClientSampleId :



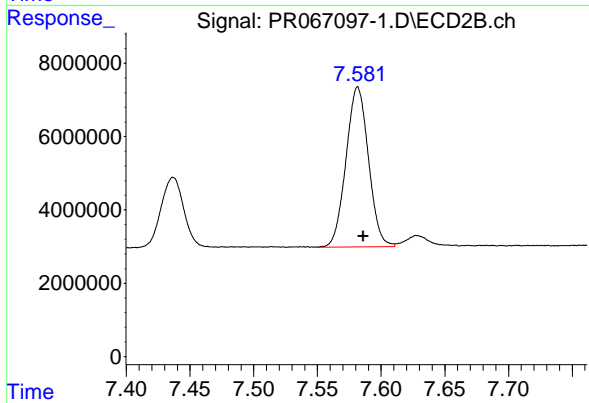
#43 AR-1268-3

R.T.: 7.266 min
 Delta R.T.: -0.007 min
 Response: 2636935
 Conc: 4.93 ng/ml



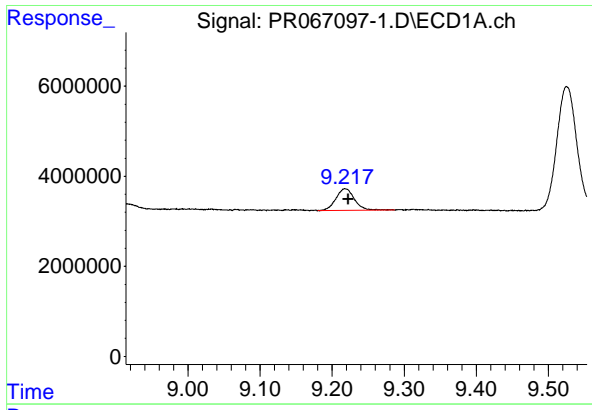
#44 AR-1268-4

R.T.: 8.836 min
 Delta R.T.: -0.004 min
 Response: 31956533
 Conc: 281.39 ng/ml



#44 AR-1268-4

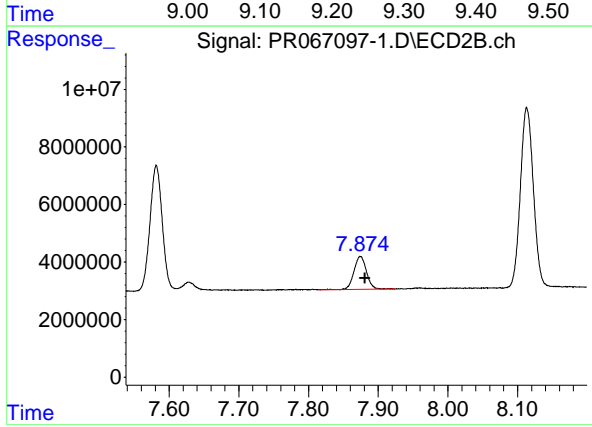
R.T.: 7.582 min
 Delta R.T.: -0.004 min
 Response: 53496208
 Conc: 242.71 ng/ml



#45 AR-1268-5

R.T.: 9.218 min
Delta R.T.: -0.004 min
Response: 8596824
Conc: 10.21 ng/ml

Instrument :
ECD_R
ClientSampleId :



#45 AR-1268-5

R.T.: 7.875 min
Delta R.T.: -0.007 min
Response: 14289988
Conc: 9.58 ng/ml