

Data Path : Z:\pestpcbsrv\HPCHEM1\ECD_R\Data\PR060121\
 Data File : PR050624.D
 Signal(s) : Signal #1: ECD1A.ch Signal #2: ECD2B.ch
 Acq On : 01 Jun 2021 11:46
 Operator : DD\AJ
 Sample : AR1660ICC100
 Misc :
 ALS Vial : 3 Sample Multiplier: 1

Instrument :
 ECD_R
 ClientSampleId :

Integration File signal 1: autoint1.e
 Integration File signal 2: autoint2.e
 Quant Time: Jun 02 00:34:01 2021
 Quant Method : Z:\pestpcbsrv\HPCHEM1\ECD_R\Method\PR060121CLP.M
 Quant Title : GC EXTRACTABLES
 QLast Update : Wed Jun 02 00:33:31 2021
 Response via : Initial Calibration
 Integrator: ChemStation

Volume Inj. : 1 µl
 Signal #1 Phase : ZB MR1 Signal #2 Phase: ZB MR2
 Signal #1 Info : 30Mx0.32mmx 0.5µm Signal #2 Info : 30M x 0.32mm x 0.25µm

Compound	RT#1	RT#2	Resp#1	Resp#2	ng/ml	ng/ml

System Monitoring Compounds						
1) SA Tetrachlo...	4.631	3.812	32339558	32614362	5.017	5.004
2) SA Decachlor...	10.502	8.840	77892094	82148436	10.860	10.683
Target Compounds						
3) L1 AR-1016-1	5.813	4.900	29401246	25279377	107.686	105.474
4) L1 AR-1016-2	5.836	4.919	39885557	37976099	103.032	102.799
5) L1 AR-1016-3	5.898	5.095	25045195	20268547	109.157	106.903
6) L1 AR-1016-4	5.999	5.136	20348468	17312741	104.990	112.833
7) L1 AR-1016-5	6.292	5.349	21068392	22485067	109.042	110.675
31) L7 AR-1260-1	7.418	6.378	40303038	43294011	115.290	108.401
32) L7 AR-1260-2	7.675	6.565	49353035	51974156	115.380	107.226
33) L7 AR-1260-3	8.033	6.719	38590489	49288673	120.000	105.877
34) L7 AR-1260-4	8.269	7.190	45844539	42298617	120.794	106.645
35) L7 AR-1260-5	8.605	7.429	83861292	99854784	105.205	102.156

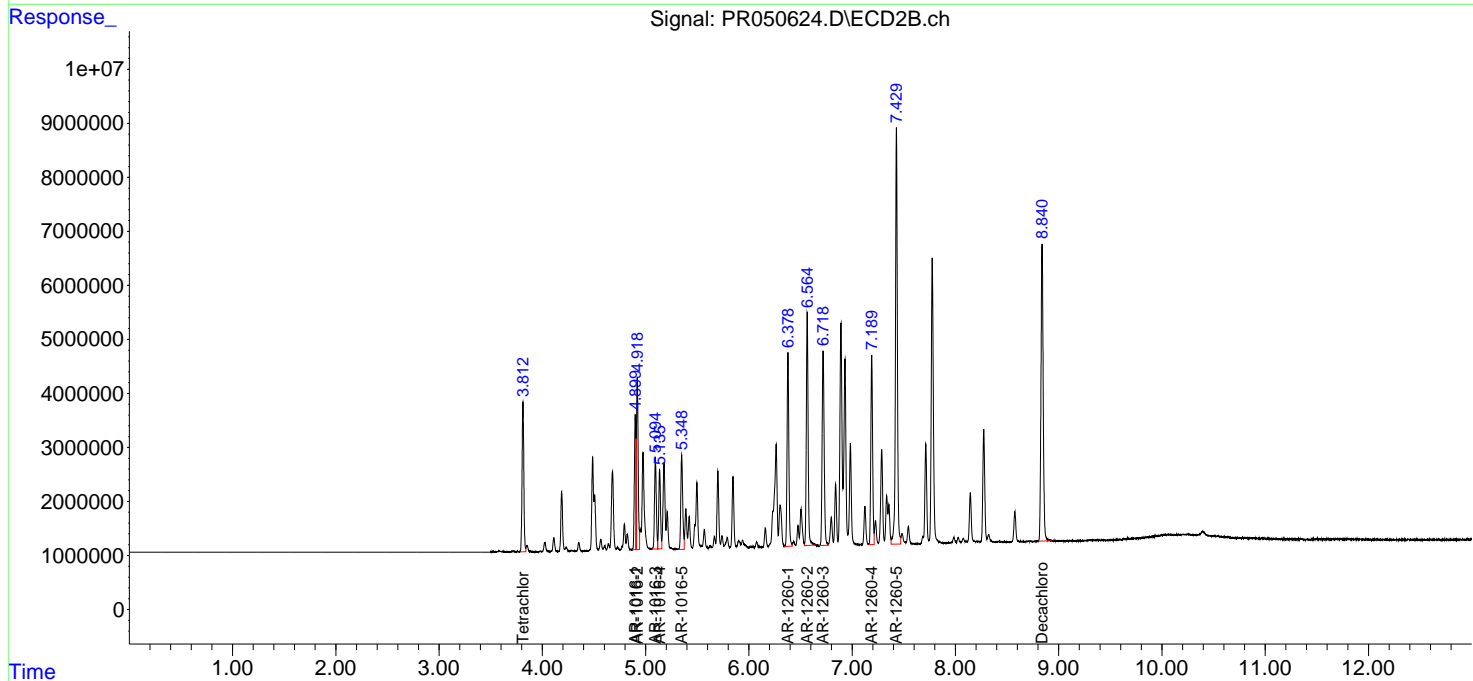
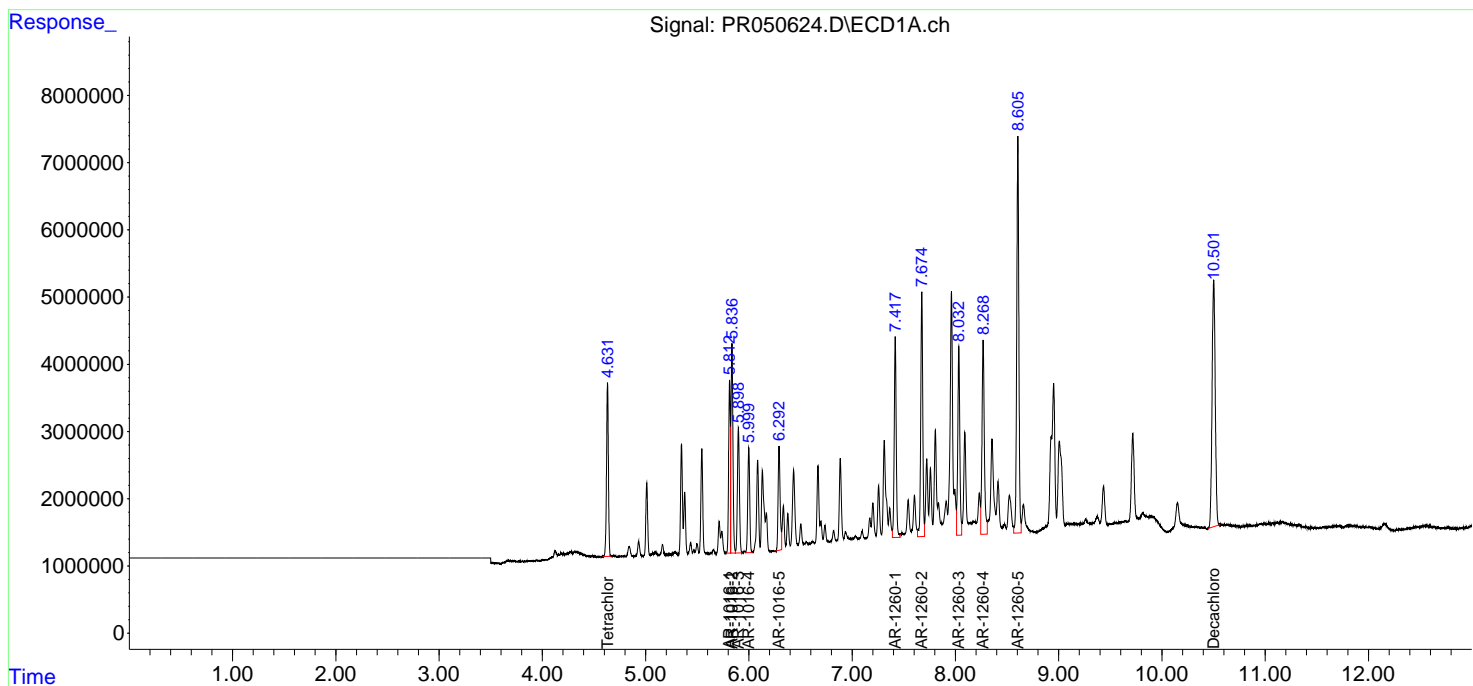
(f)=RT Delta > 1/2 Window (#)=Amounts differ by > 25% (m)=manual int.

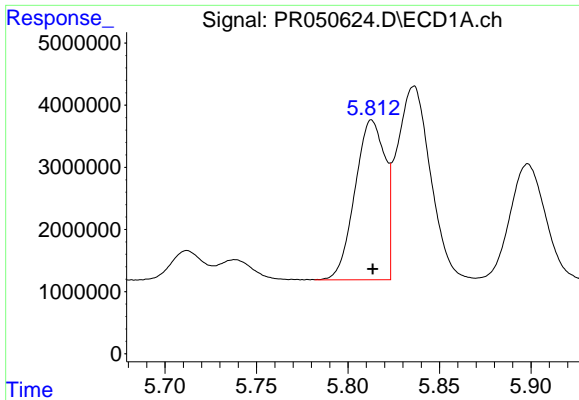
Data Path : Z:\pestpcbsrv\HPCHEM1\ECD_R\Data\PR060121\
 Data File : PR050624.D
 Signal(s) : Signal #1: ECD1A.ch Signal #2: ECD2B.ch
 Acq On : 01 Jun 2021 11:46
 Operator : DD\AJ
 Sample : AR1660ICC100
 Misc :
 ALS Vial : 3 Sample Multiplier: 1

Instrument :
 ECD_R
 ClientSampled :

Integration File signal 1: autoint1.e
 Integration File signal 2: autoint2.e
 Quant Time: Jun 02 00:34:01 2021
 Quant Method : Z:\pestpcbsrv\HPCHEM1\ECD_R\Method\PR060121CLP.M
 Quant Title : GC EXTRACTABLES
 QLast Update : Wed Jun 02 00:33:31 2021
 Response via : Initial Calibration
 Integrator: ChemStation

Volume Inj. : 1 µl
 Signal #1 Phase : ZB MR1 Signal #2 Phase: ZB MR2
 Signal #1 Info : 30Mx0.32mmx 0.5µm Signal #2 Info : 30M x 0.32mm x 0.25µm

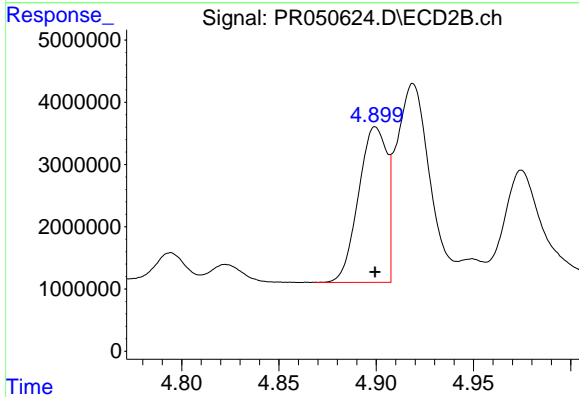




#3 AR-1016-1

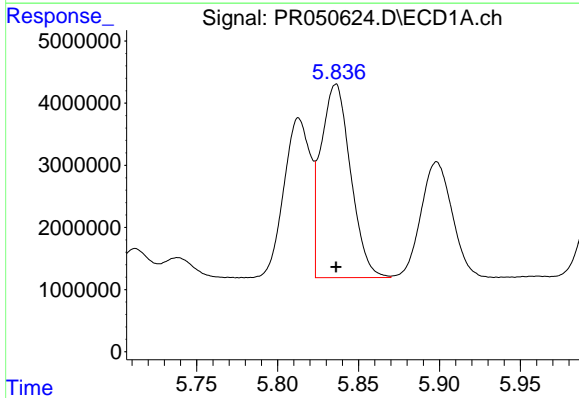
R.T.: 5.813 min
 Delta R.T.: 0.000 min
 Response: 29401246
 Conc: 107.69 ng/ml

Instrument :
 ECD_R
 ClientSampled :



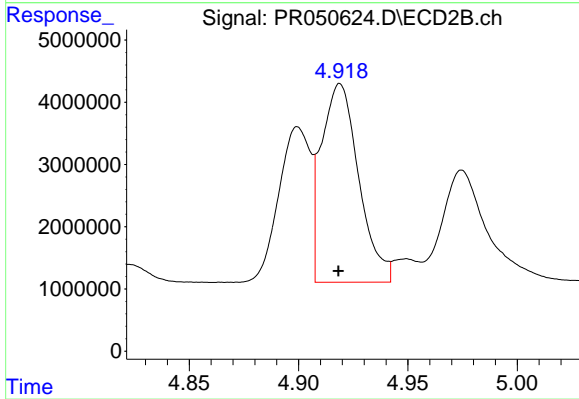
#3 AR-1016-1

R.T.: 4.900 min
 Delta R.T.: 0.000 min
 Response: 25279377
 Conc: 105.47 ng/ml



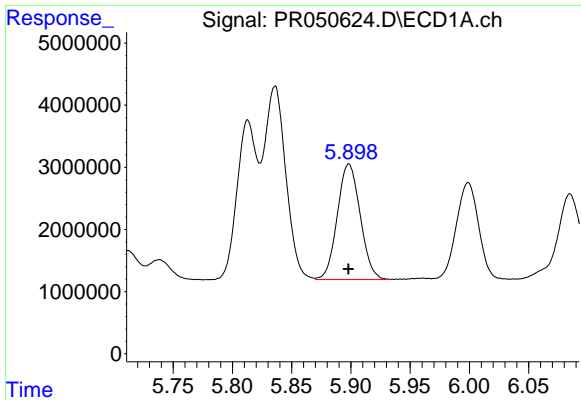
#4 AR-1016-2

R.T.: 5.836 min
 Delta R.T.: 0.000 min
 Response: 39885557
 Conc: 103.03 ng/ml



#4 AR-1016-2

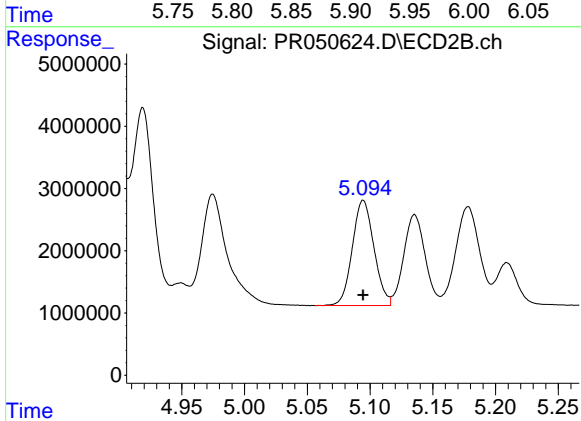
R.T.: 4.919 min
 Delta R.T.: 0.000 min
 Response: 37976099
 Conc: 102.80 ng/ml



#5 AR-1016-3

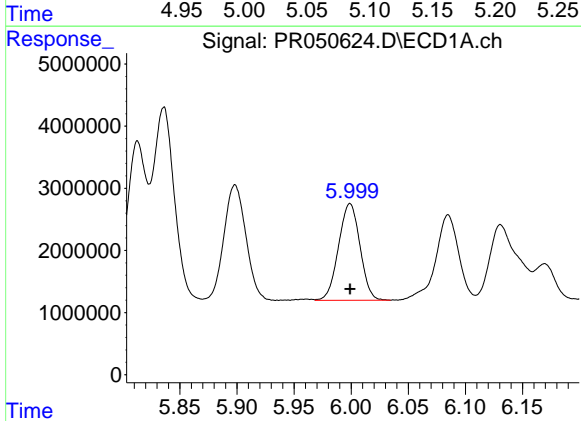
R.T.: 5.898 min
 Delta R.T.: 0.000 min
 Response: 25045195
 Conc: 109.16 ng/ml

Instrument :
 ECD_R
 ClientSampled :



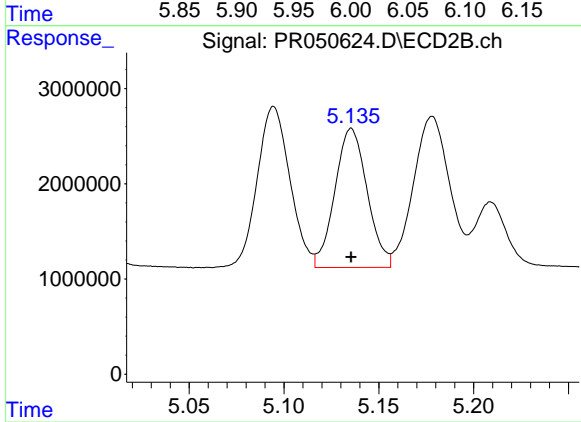
#5 AR-1016-3

R.T.: 5.095 min
 Delta R.T.: 0.000 min
 Response: 20268547
 Conc: 106.90 ng/ml



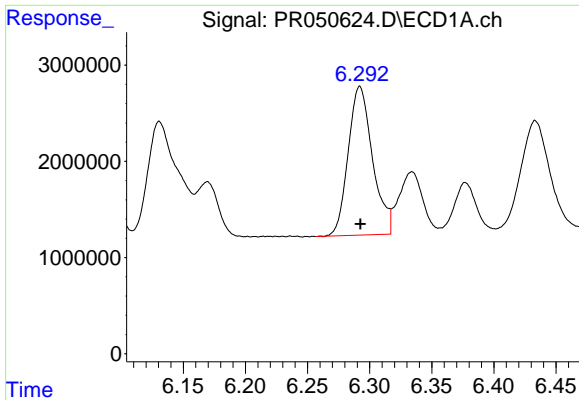
#6 AR-1016-4

R.T.: 5.999 min
 Delta R.T.: 0.000 min
 Response: 20348468
 Conc: 104.99 ng/ml



#6 AR-1016-4

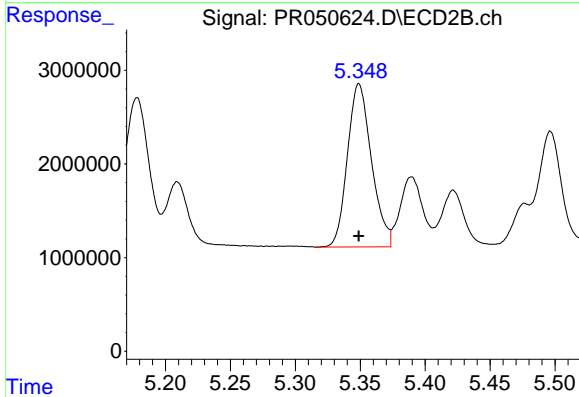
R.T.: 5.136 min
 Delta R.T.: 0.000 min
 Response: 17312741
 Conc: 112.83 ng/ml



#7 AR-1016-5

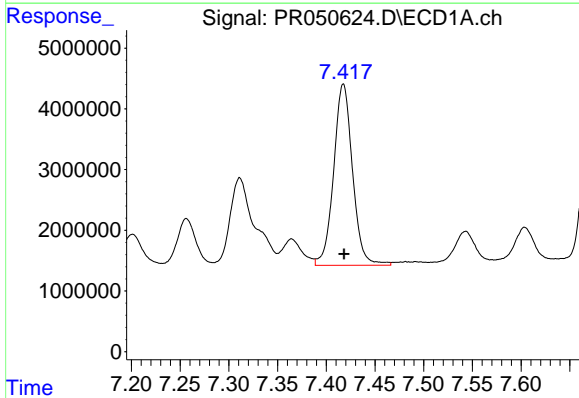
R.T.: 6.292 min
Delta R.T.: 0.000 min
Response: 21068392
Conc: 109.04 ng/ml

Instrument :
ECD_R
ClientSampleId :



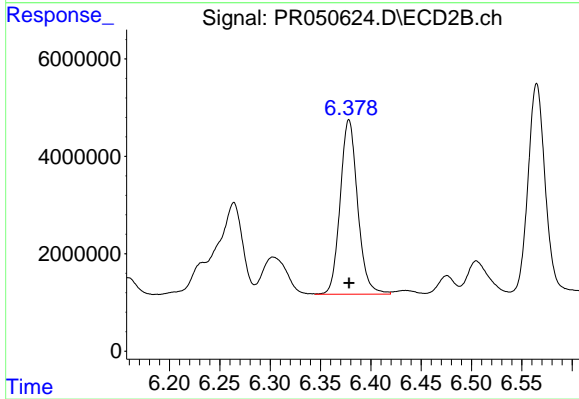
#7 AR-1016-5

R.T.: 5.349 min
Delta R.T.: 0.000 min
Response: 22485067
Conc: 110.68 ng/ml



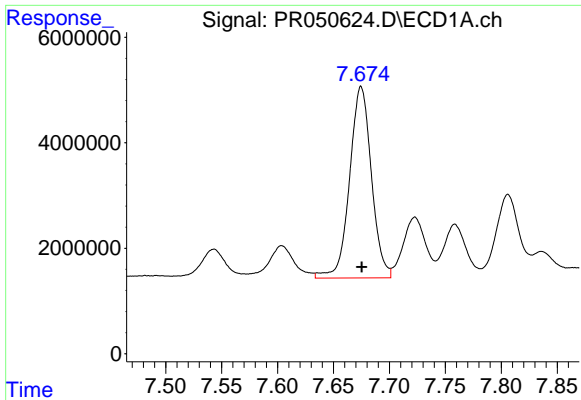
#31 AR-1260-1

R.T.: 7.418 min
Delta R.T.: 0.000 min
Response: 40303038
Conc: 115.29 ng/ml



#31 AR-1260-1

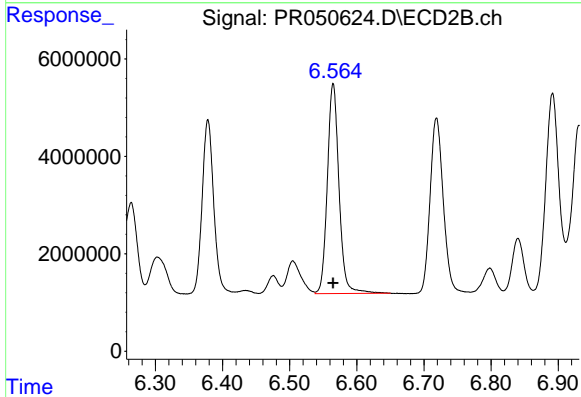
R.T.: 6.378 min
Delta R.T.: 0.000 min
Response: 43294011
Conc: 108.40 ng/ml



#32 AR-1260-2

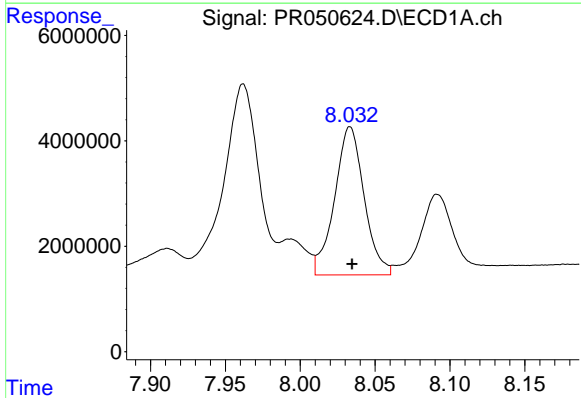
R.T.: 7.675 min
Delta R.T.: 0.000 min
Response: 49353035
Conc: 115.38 ng/ml

Instrument :
ECD_R
ClientSampled :



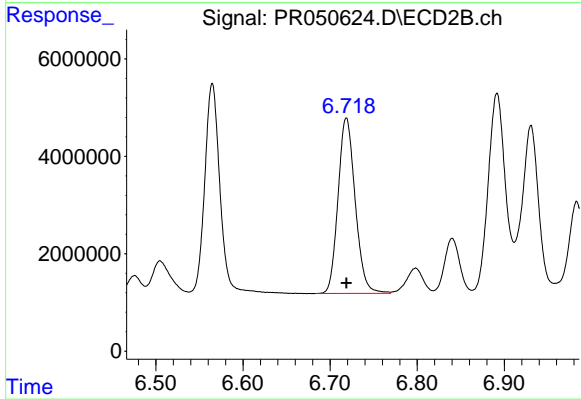
#32 AR-1260-2

R.T.: 6.565 min
Delta R.T.: 0.000 min
Response: 51974156
Conc: 107.23 ng/ml



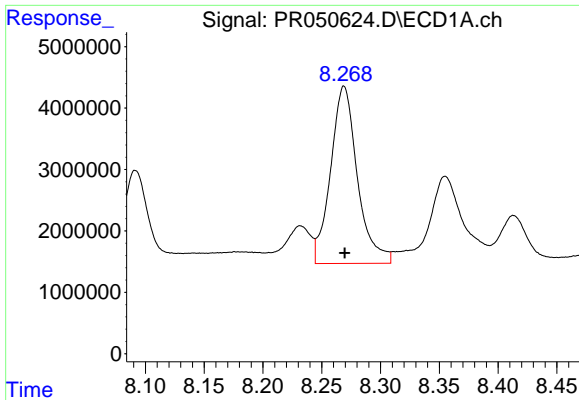
#33 AR-1260-3

R.T.: 8.033 min
Delta R.T.: -0.001 min
Response: 38590489
Conc: 120.00 ng/ml



#33 AR-1260-3

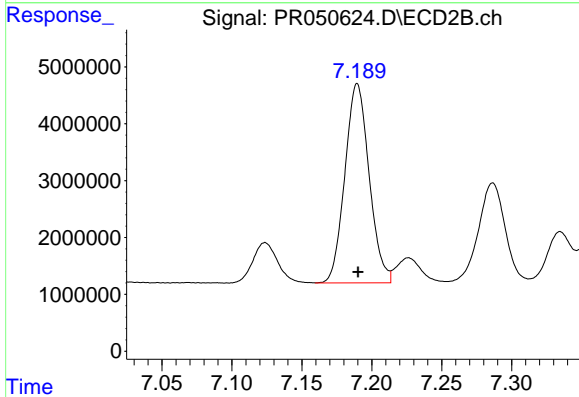
R.T.: 6.719 min
Delta R.T.: 0.000 min
Response: 49288673
Conc: 105.88 ng/ml



#34 AR-1260-4

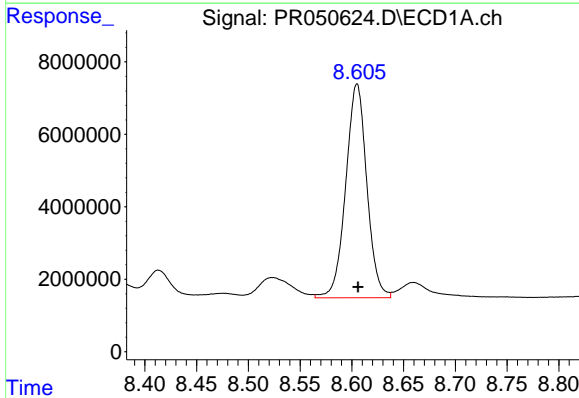
R.T.: 8.269 min
 Delta R.T.: 0.000 min
 Response: 45844539
 Conc: 120.79 ng/ml

Instrument :
 ECD_R
 ClientSampled :



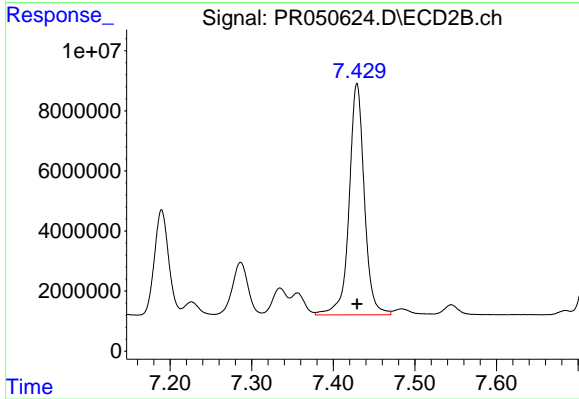
#34 AR-1260-4

R.T.: 7.190 min
 Delta R.T.: 0.000 min
 Response: 42298617
 Conc: 106.64 ng/ml



#35 AR-1260-5

R.T.: 8.605 min
 Delta R.T.: -0.001 min
 Response: 83861292
 Conc: 105.21 ng/ml



#35 AR-1260-5

R.T.: 7.429 min
 Delta R.T.: 0.000 min
 Response: 99854784
 Conc: 102.16 ng/ml