

Data Path : Z:\pestpcbsrv\HPCHEM1\ECD\_R\Data\PR060324\  
 Data File : PR067298.D  
 Signal(s) : Signal #1: ECD1A.ch Signal #2: ECD2B.ch  
 Acq On : 03 Jun 2024 15:31  
 Operator : AJ\MA  
 Sample : P2648-19  
 Misc :  
 ALS Vial : 29 Sample Multiplier: 1

Instrument :  
 ECD\_R  
 ClientSampleId :  
 BHC51

Integration File signal 1: autoint1.e  
 Integration File signal 2: autoint2.e  
 Quant Time: Jun 04 03:27:04 2024  
 Quant Method : Z:\pestpcbsrv\HPCHEM1\ECD\_R\Method\PR052124CLP.M  
 Quant Title : GC EXTRACTABLES  
 QLast Update : Wed May 22 04:28:16 2024  
 Response via : Initial Calibration  
 Integrator: ChemStation

Volume Inj. : 1 µl  
 Signal #1 Phase : ZB MR1 Signal #2 Phase: ZB MR2  
 Signal #1 Info : 30Mx0.32mmx 0.5µm Signal #2 Info : 30M x 0.32mm x 0.25µm

Compound	RT#1	RT#2	Resp#1	Resp#2	ng/ml	ng/ml
-----						
System Monitoring Compounds						
1) SA Tetrachlo...	3.648	2.889	103.9E6	84346759	16.940	18.116
2) SA Decachlor...	9.529	8.113	46794462	79478702	36.038	35.697
Target Compounds						
3) L1 AR-1016-1	4.874	4.012	17086393	3069312	106.526	20.446 #
4) L1 AR-1016-2	4.898	4.012	15123937	3069312	58.905	13.851 #
5) L1 AR-1016-3	4.954	4.200	32085961	9666277	186.400	78.457 #
6) L1 AR-1016-4	5.088	4.236	11342345	6849302	85.514	65.581
7) L1 AR-1016-5	5.416f	4.461	2366390	7903429	17.534	59.673 #
8) L2 AR-1221-1	3.856	3.106	1530799	1048464	23.461	18.880
9) L2 AR-1221-2	3.958	3.183	1330037	5438117	28.496	135.857 #
10) L2 AR-1221-3	4.053	3.275	1430273	794064	9.480	6.293 #
11) L3 AR-1232-1	4.053	3.275	1430273	794064	11.272	7.420 #
12) L3 AR-1232-2	4.581	4.012	10491054	3069312	147.657	29.625 #
13) L3 AR-1232-3	4.898	4.200	15123937	9666277	132.362	174.803 #
14) L3 AR-1232-4	5.088	4.285	11342345	9006188	195.989	176.174
15) L3 AR-1232-5	5.150	4.461	7855000	7903429	176.503	142.693
16) L4 AR-1242-1	4.874	4.012	17086393	3069312	138.523	25.839 #
17) L4 AR-1242-2	4.898	4.012	15123937	3069312	76.956	17.304 #
18) L4 AR-1242-3	4.954	4.200	32085961	9666277	239.202	98.414 #
19) L4 AR-1242-4	5.088	4.285	11342345	9006188	109.635	90.925
20) L4 AR-1242-5	5.842	4.824	6344993	18586489	60.309	157.748 #
21) L5 AR-1248-1	4.874	4.012	17086393	3069312	188.024	33.943 #
22) L5 AR-1248-2	5.150	4.236	7855000	6849302	52.767	49.009
23) L5 AR-1248-3	5.416f	4.285	2366390	9006188	13.854	64.403 #
24) L5 AR-1248-4	5.796	4.461	13577586	7903429	86.104	47.172 #
25) L5 AR-1248-5	5.842	4.865	6344993	7461746	35.629	48.297 #
26) L6 AR-1254-1	5.771	4.824	7043840	18586489	36.951	76.091 #
27) L6 AR-1254-2	6.006	4.984	20653353	24078816	73.584	111.232 #
28) L6 AR-1254-3	6.399	5.401	30483816	23979888	113.726	70.505 #
29) L6 AR-1254-4	6.708	5.647	8785546	12495824	54.535	63.678
30) L6 AR-1254-5	7.163	6.091	32292597	116.8E6	168.185	379.168 #
31) L7 AR-1260-1	6.577	5.542	15773450	47749182	64.687	183.275 #
32) L7 AR-1260-2	6.850	5.746	79556549	41280032	307.293	134.630 #
33) L7 AR-1260-3	7.248	5.901	18328320	19374401	92.241	66.094 #
34) L7 AR-1260-4	7.489	6.406	24387521	21156786	116.752	84.615 #
35) L7 AR-1260-5	7.827	6.671	30255150	34987889	88.391	64.094 #
36) L8 AR-1262-1	7.248	6.135	18328320	24638958	70.827	74.334
37) L8 AR-1262-2	7.827	6.671	30255150	34987889	87.235	62.864 #
38) L8 AR-1262-3	8.136	6.977	14546345	18080495	63.778	75.756
39) L8 AR-1262-4	8.219	7.040	13567813	35659808	75.168	83.568
40) L8 AR-1262-5	8.838	7.581	6684084	9785393	65.251	49.958
41) L9 AR-1268-1	8.136	6.977	14546345	18080495	35.064	27.171

Data Path : Z:\pestpcbsrv\HPCHEM1\ECD\_R\Data\PR060324\  
 Data File : PR067298.D  
 Signal(s) : Signal #1: ECD1A.ch Signal #2: ECD2B.ch  
 Acq On : 03 Jun 2024 15:31  
 Operator : AJ\MA  
 Sample : P2648-19  
 Misc :  
 ALS Vial : 29 Sample Multiplier: 1

**Instrument :**  
 ECD\_R  
**ClientSampleId :**  
 BHC51

Integration File signal 1: autoint1.e  
 Integration File signal 2: autoint2.e  
 Quant Time: Jun 04 03:27:04 2024  
 Quant Method : Z:\pestpcbsrv\HPCHEM1\ECD\_R\Method\PR052124CLP.M  
 Quant Title : GC EXTRACTABLES  
 QLast Update : Wed May 22 04:28:16 2024  
 Response via : Initial Calibration  
 Integrator: ChemStation

Volume Inj. : 1 µl  
 Signal #1 Phase : ZB MR1 Signal #2 Phase: ZB MR2  
 Signal #1 Info : 30Mx0.32mmx 0.5µm Signal #2 Info : 30M x 0.32mm x 0.25µm

	Compound	RT#1	RT#2	Resp#1	Resp#2	ng/ml	ng/ml
42)	L9 AR-1268-2	8.219	7.040	13567813	35659808	36.619	58.510 #
43)	L9 AR-1268-3	8.439	7.264	2604793	15828685	8.007	29.594 #
44)	L9 AR-1268-4	8.838	7.581	6684084	9785393	58.856	44.396
45)	L9 AR-1268-5	9.220	7.875	7007489	16906567	8.319	11.334 #

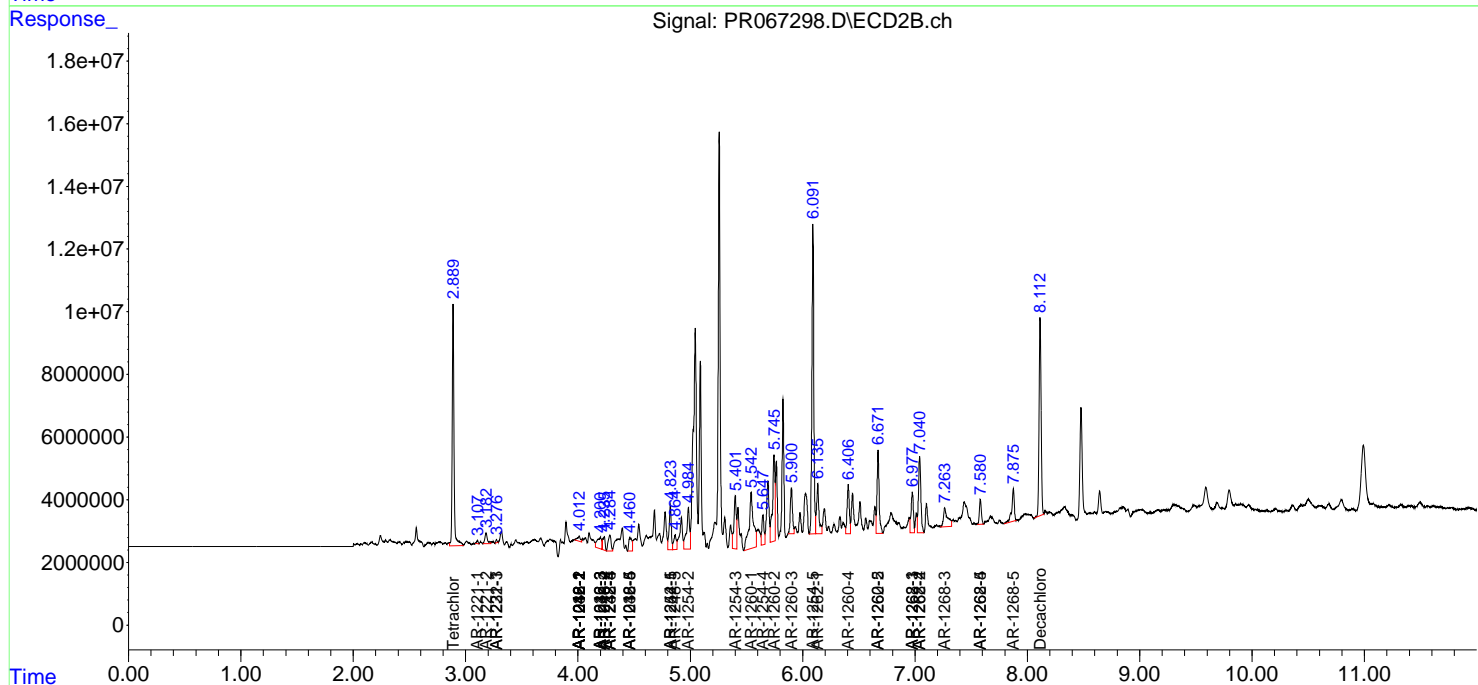
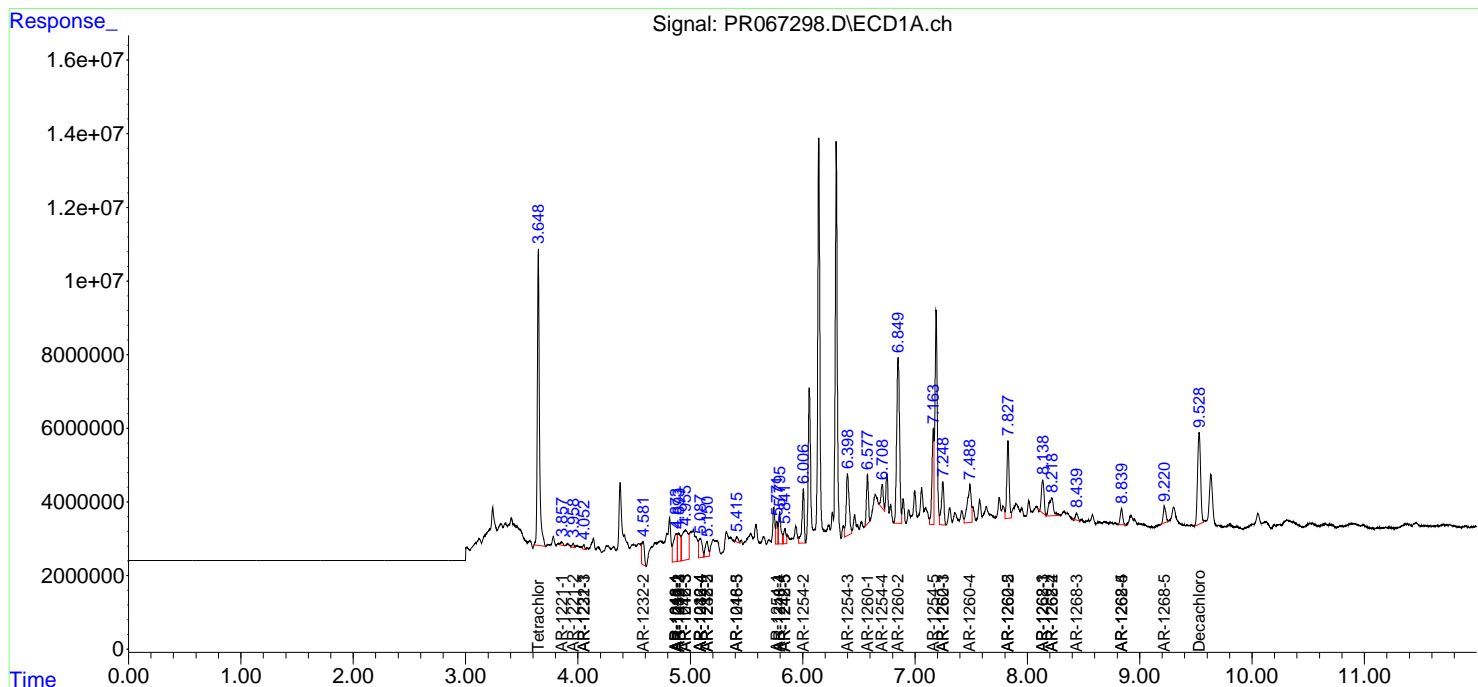
(f)=RT Delta > 1/2 Window (#)=Amounts differ by > 25% (m)=manual int.

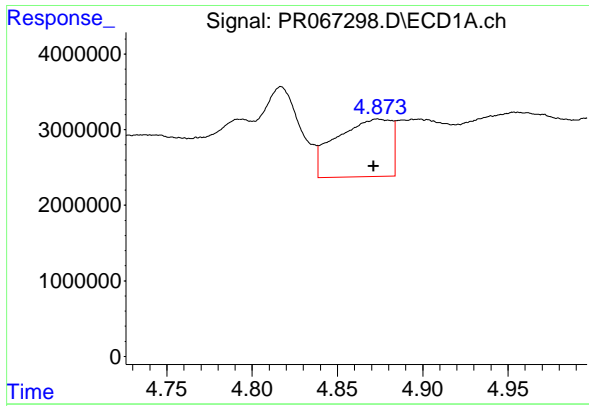
Data Path : Z:\pestpcbsrv\HPCHEM1\ECD\_R\Data\PR067298.D  
 Data File : PR067298.D  
 Signal(s) : Signal #1: ECD1A.ch Signal #2: ECD2B.ch  
 Acq On : 03 Jun 2024 15:31  
 Operator : AJ\MA  
 Sample : P2648-19  
 Misc :  
 ALS Vial : 29 Sample Multiplier: 1

Instrument :  
 ECD\_R  
 ClientSampleId :  
 BHC51

Integration File signal 1: autoint1.e  
 Integration File signal 2: autoint2.e  
 Quant Time: Jun 04 03:27:04 2024  
 Quant Method : Z:\pestpcbsrv\HPCHEM1\ECD\_R\Method\PR052124CLP.M  
 Quant Title : GC EXTRACTABLES  
 QLast Update : Wed May 22 04:28:16 2024  
 Response via : Initial Calibration  
 Integrator: ChemStation

Volume Inj. : 1 µl  
 Signal #1 Phase : ZB MR1 Signal #2 Phase: ZB MR2  
 Signal #1 Info : 30Mx0.32mmx 0.5µm Signal #2 Info : 30M x 0.32mm x 0.25µm

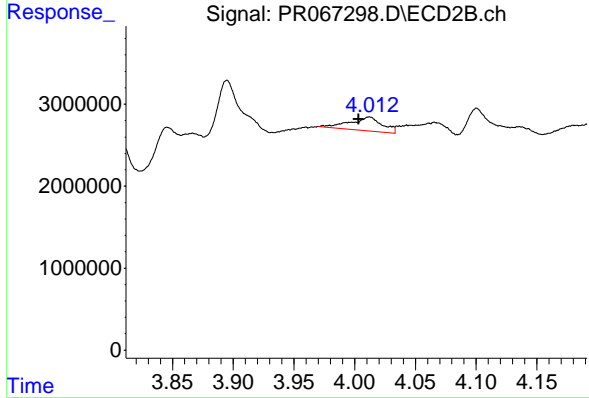




#3 AR-1016-1

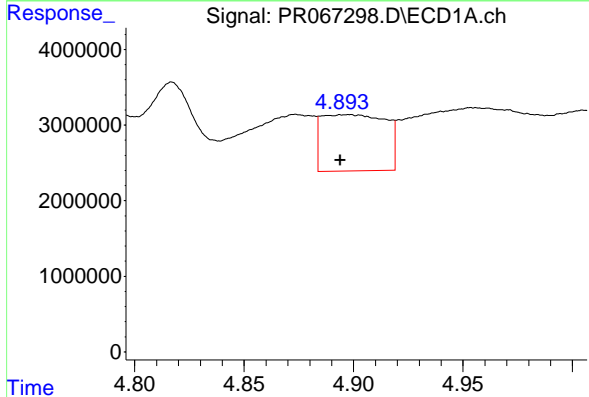
R.T.: 4.874 min  
 Delta R.T.: 0.002 min  
 Response: 17086393  
 Conc: 106.53 ng/ml

Instrument :  
 ECD\_R  
 ClientSampleId :  
 BHC51



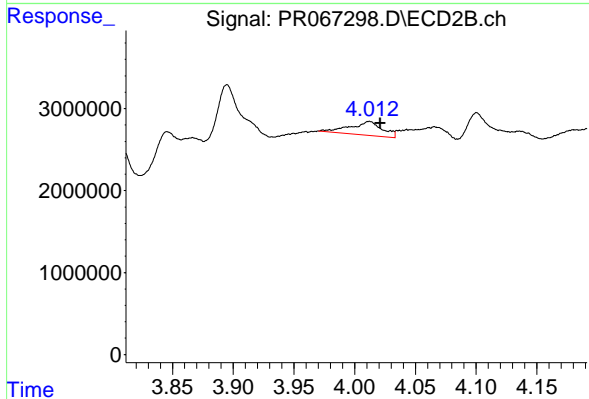
#3 AR-1016-1

R.T.: 4.012 min  
 Delta R.T.: 0.009 min  
 Response: 3069312  
 Conc: 20.45 ng/ml



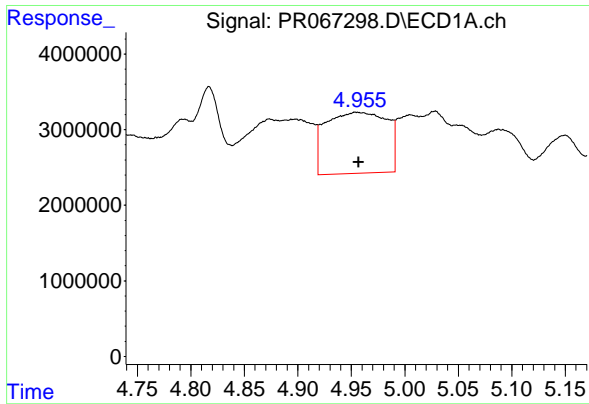
#4 AR-1016-2

R.T.: 4.898 min  
 Delta R.T.: 0.004 min  
 Response: 15123937  
 Conc: 58.91 ng/ml



#4 AR-1016-2

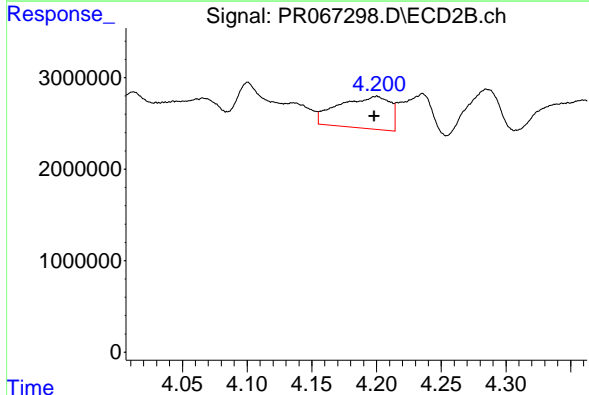
R.T.: 4.012 min  
 Delta R.T.: -0.009 min  
 Response: 3069312  
 Conc: 13.85 ng/ml



#5 AR-1016-3

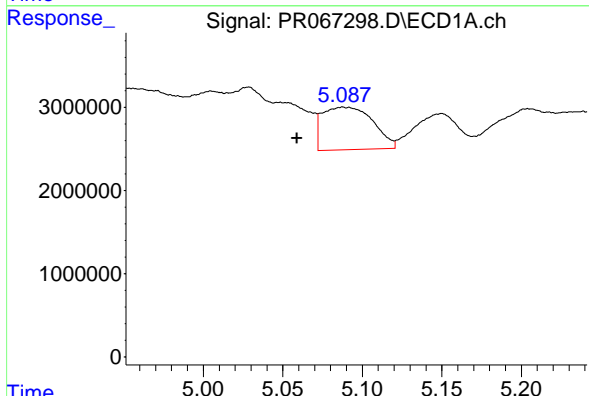
R.T.: 4.954 min  
 Delta R.T.: -0.003 min  
 Response: 32085961  
 Conc: 186.40 ng/ml

Instrument : ECD\_R  
 ClientSampleId : BHC51



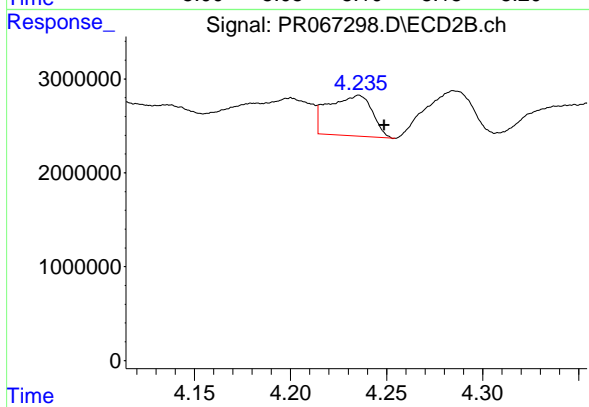
#5 AR-1016-3

R.T.: 4.200 min  
 Delta R.T.: 0.002 min  
 Response: 9666277  
 Conc: 78.46 ng/ml



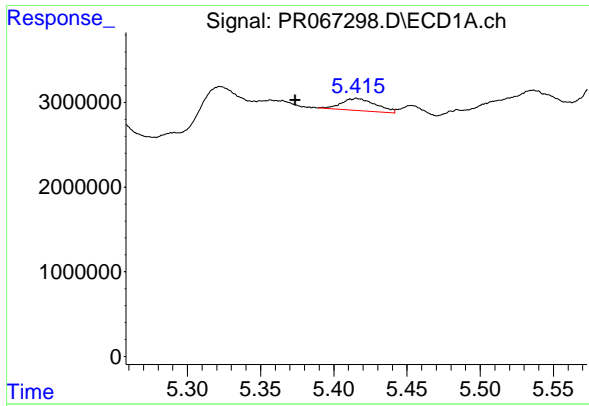
#6 AR-1016-4

R.T.: 5.088 min  
 Delta R.T.: 0.029 min  
 Response: 11342345  
 Conc: 85.51 ng/ml



#6 AR-1016-4

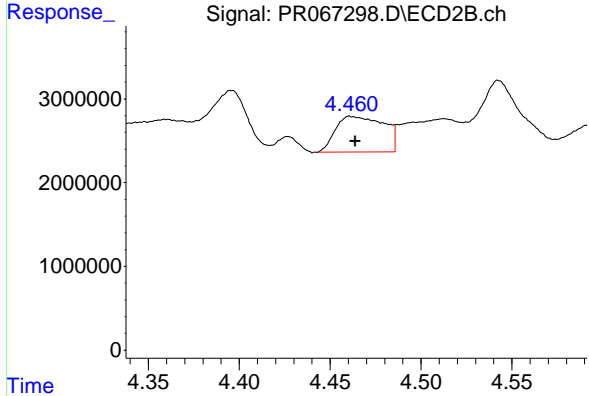
R.T.: 4.236 min  
 Delta R.T.: -0.013 min  
 Response: 6849302  
 Conc: 65.58 ng/ml



#7 AR-1016-5

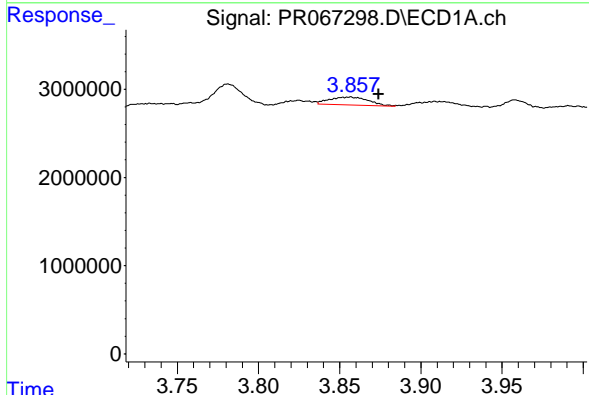
R.T.: 5.416 min  
 Delta R.T.: 0.042 min  
 Response: 2366390  
 Conc: 17.53 ng/ml

Instrument : ECD\_R  
 ClientSampleId : BHC51



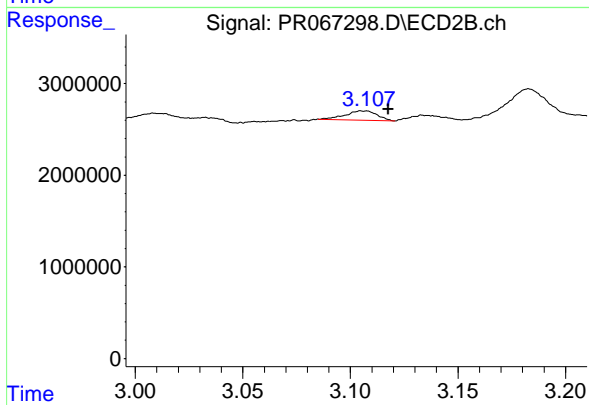
#7 AR-1016-5

R.T.: 4.461 min  
 Delta R.T.: -0.003 min  
 Response: 7903429  
 Conc: 59.67 ng/ml



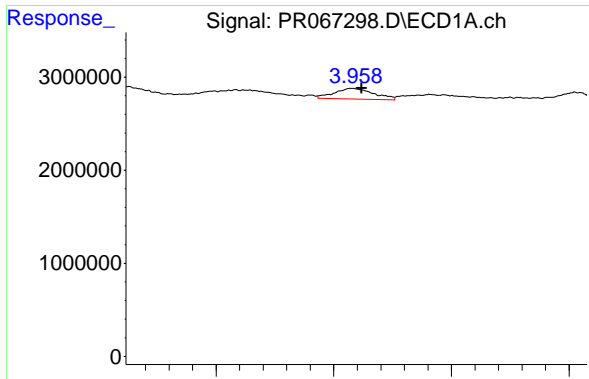
#8 AR-1221-1

R.T.: 3.856 min  
 Delta R.T.: -0.017 min  
 Response: 1530799  
 Conc: 23.46 ng/ml



#8 AR-1221-1

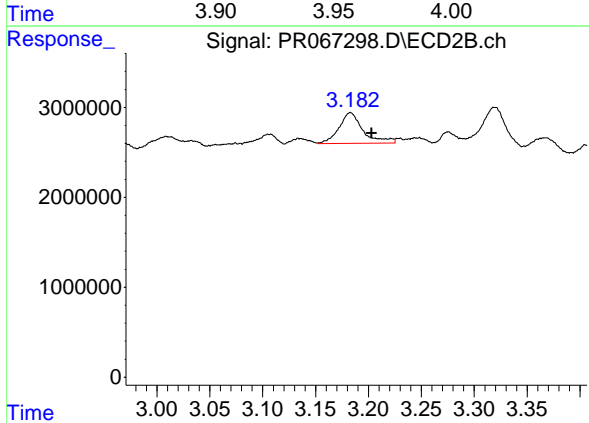
R.T.: 3.106 min  
 Delta R.T.: -0.011 min  
 Response: 1048464  
 Conc: 18.88 ng/ml



#9 AR-1221-2

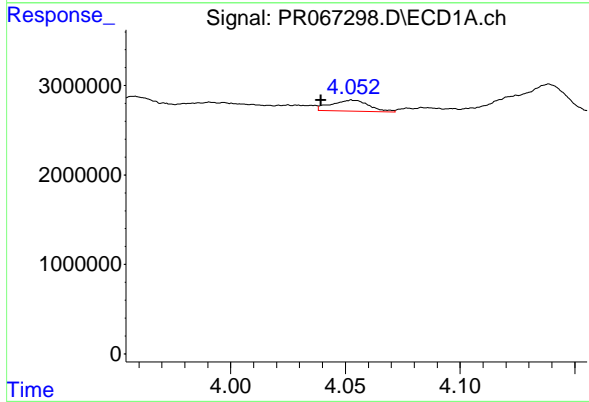
R.T.: 3.958 min  
 Delta R.T.: -0.004 min  
 Response: 1330037  
 Conc: 28.50 ng/ml

Instrument :  
 ECD\_R  
 ClientSampleId :  
 BHC51



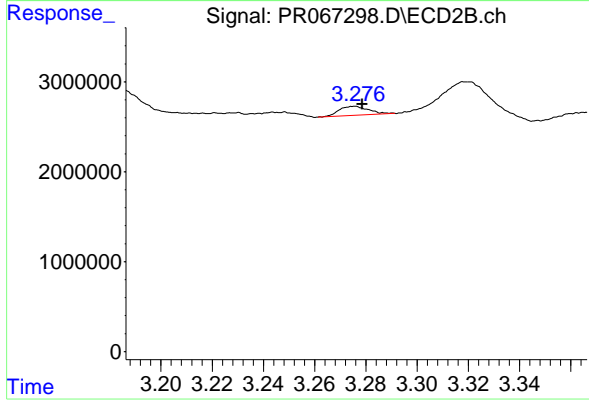
#9 AR-1221-2

R.T.: 3.183 min  
 Delta R.T.: -0.020 min  
 Response: 5438117  
 Conc: 135.86 ng/ml



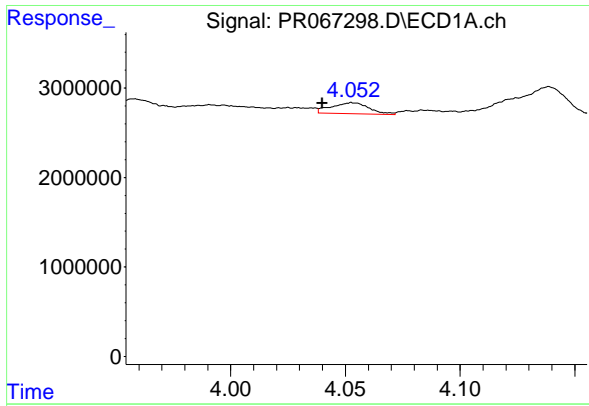
#10 AR-1221-3

R.T.: 4.053 min  
 Delta R.T.: 0.014 min  
 Response: 1430273  
 Conc: 9.48 ng/ml



#10 AR-1221-3

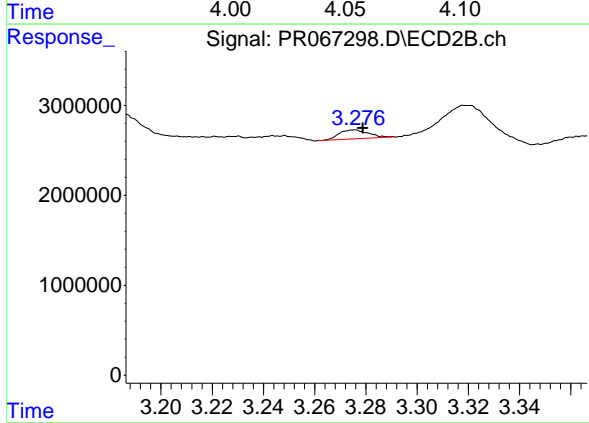
R.T.: 3.275 min  
 Delta R.T.: -0.003 min  
 Response: 794064  
 Conc: 6.29 ng/ml



#11 AR-1232-1

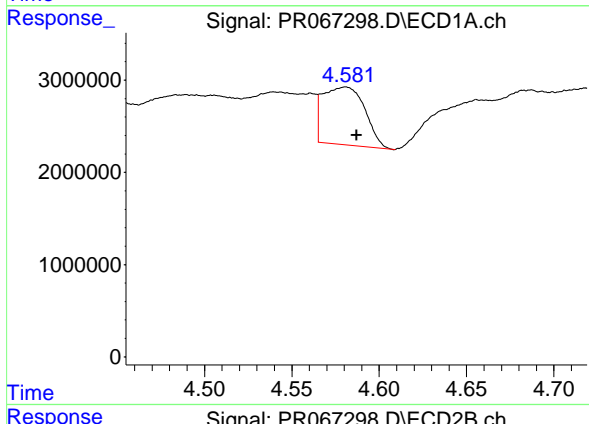
R.T.: 4.053 min  
 Delta R.T.: 0.013 min  
 Response: 1430273  
 Conc: 11.27 ng/ml

Instrument :  
 ECD\_R  
 ClientSampleId :  
 BHC51



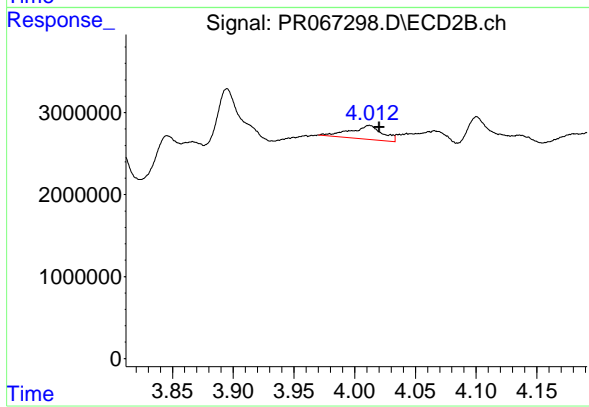
#11 AR-1232-1

R.T.: 3.275 min  
 Delta R.T.: -0.003 min  
 Response: 794064  
 Conc: 7.42 ng/ml



#12 AR-1232-2

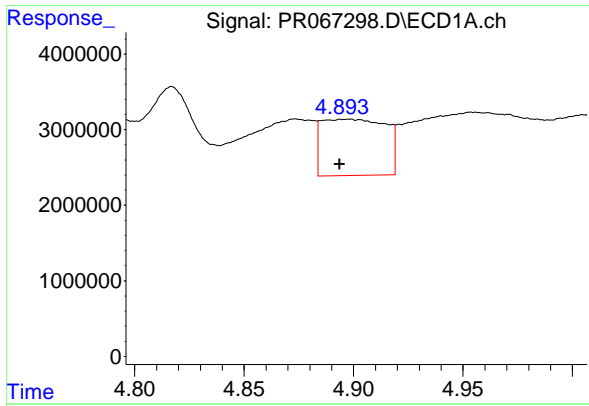
R.T.: 4.581 min  
 Delta R.T.: -0.006 min  
 Response: 10491054  
 Conc: 147.66 ng/ml



#12 AR-1232-2

R.T.: 4.012 min  
 Delta R.T.: -0.008 min  
 Response: 3069312  
 Conc: 29.63 ng/ml

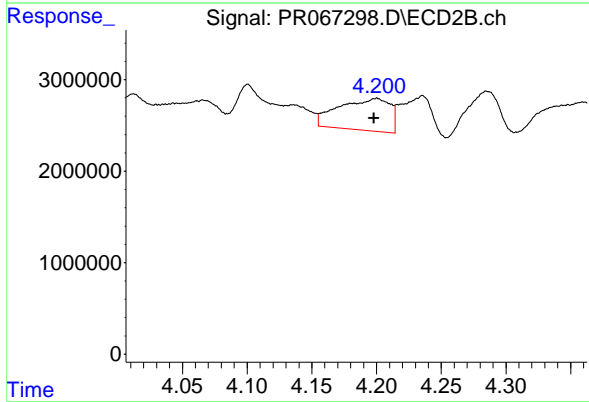




#13 AR-1232-3

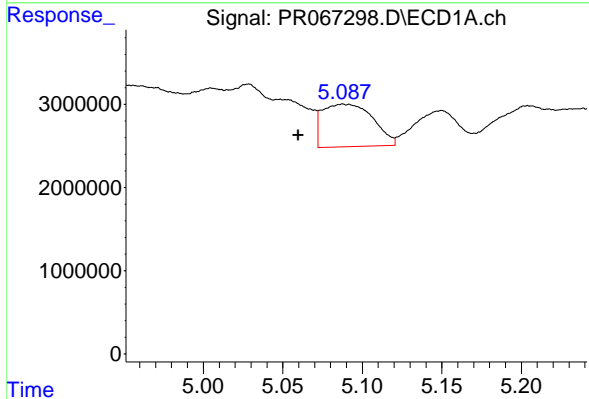
R.T.: 4.898 min  
 Delta R.T.: 0.004 min  
 Response: 15123937  
 Conc: 132.36 ng/ml

Instrument :  
 ECD\_R  
 ClientSampleId :  
 BHC51



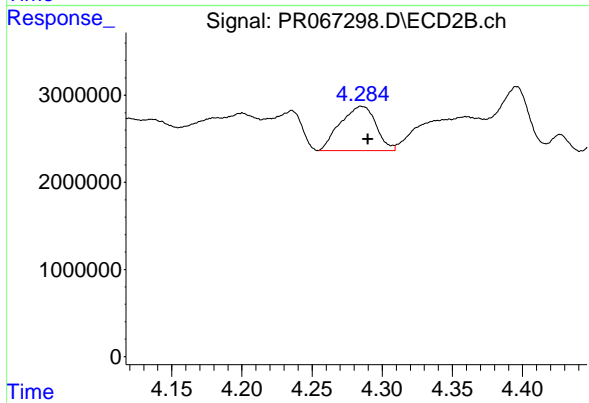
#13 AR-1232-3

R.T.: 4.200 min  
 Delta R.T.: 0.002 min  
 Response: 9666277  
 Conc: 174.80 ng/ml



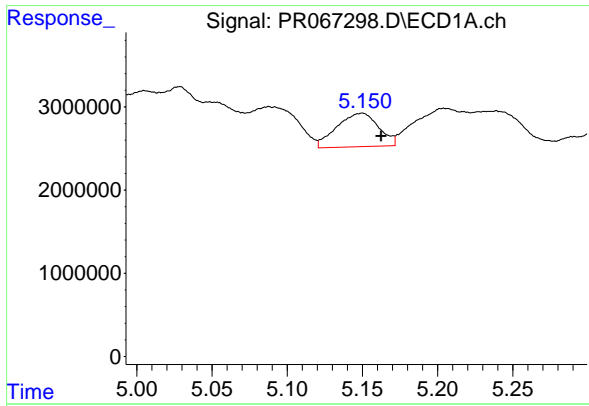
#14 AR-1232-4

R.T.: 5.088 min  
 Delta R.T.: 0.028 min  
 Response: 11342345  
 Conc: 195.99 ng/ml



#14 AR-1232-4

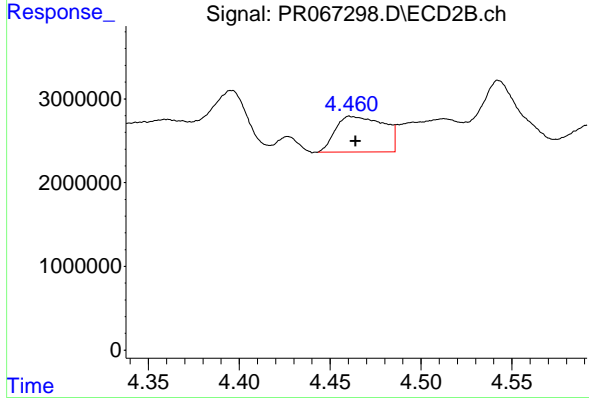
R.T.: 4.285 min  
 Delta R.T.: -0.004 min  
 Response: 9006188  
 Conc: 176.17 ng/ml



#15 AR-1232-5

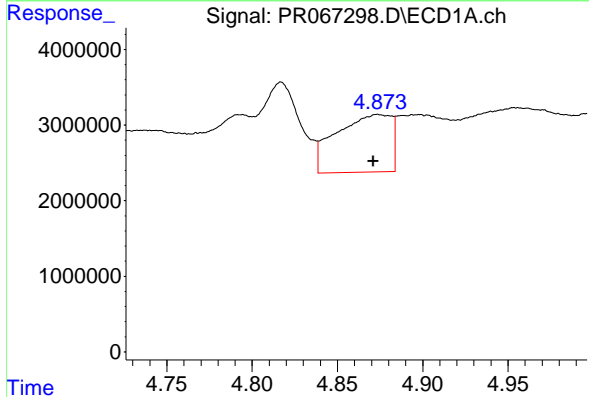
R.T.: 5.150 min  
 Delta R.T.: -0.013 min  
 Response: 7855000  
 Conc: 176.50 ng/ml

Instrument :  
 ECD\_R  
 ClientSampleId :  
 BHC51



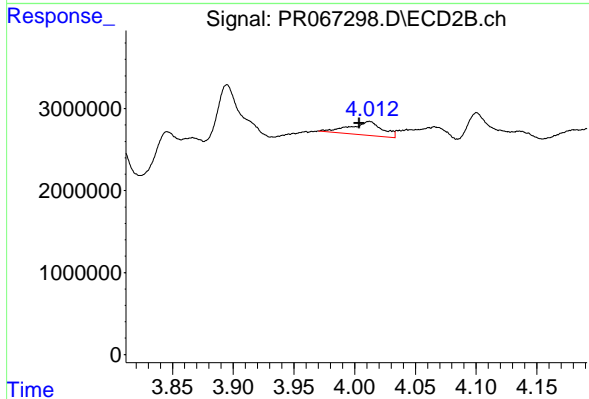
#15 AR-1232-5

R.T.: 4.461 min  
 Delta R.T.: -0.003 min  
 Response: 7903429  
 Conc: 142.69 ng/ml



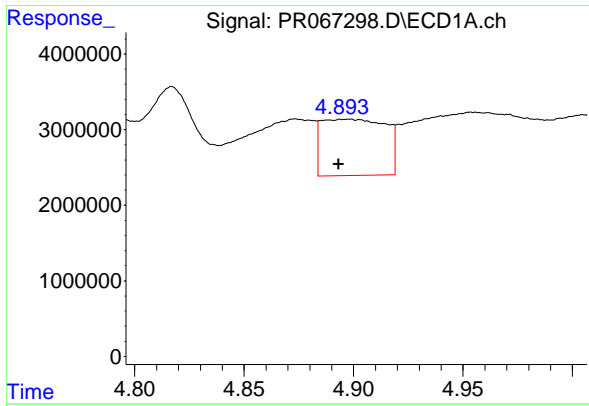
#16 AR-1242-1

R.T.: 4.874 min  
 Delta R.T.: 0.002 min  
 Response: 17086393  
 Conc: 138.52 ng/ml



#16 AR-1242-1

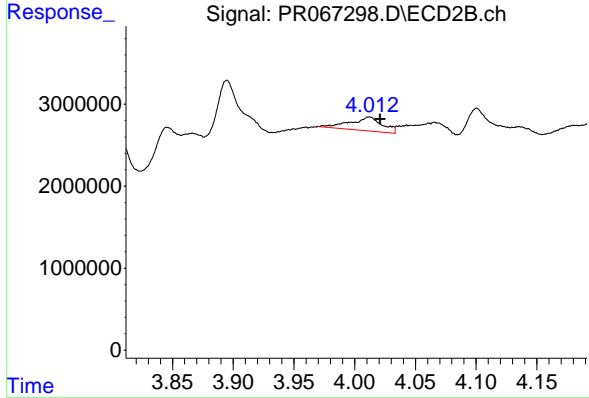
R.T.: 4.012 min  
 Delta R.T.: 0.008 min  
 Response: 3069312  
 Conc: 25.84 ng/ml



#17 AR-1242-2

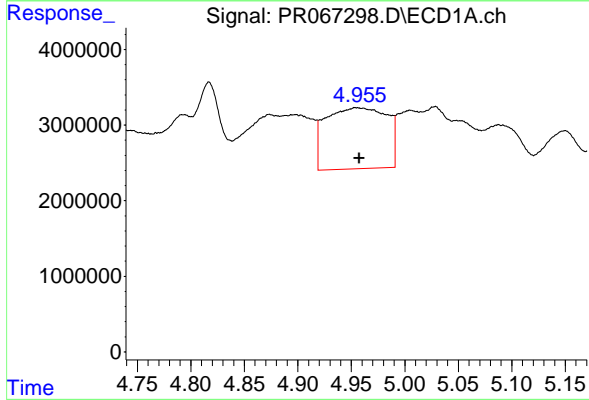
R.T.: 4.898 min  
 Delta R.T.: 0.005 min  
 Response: 15123937  
 Conc: 76.96 ng/ml

Instrument :  
 ECD\_R  
 ClientSampleId :  
 BHC51



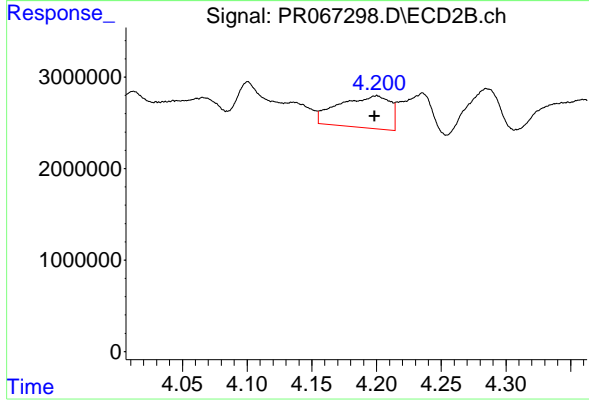
#17 AR-1242-2

R.T.: 4.012 min  
 Delta R.T.: -0.009 min  
 Response: 3069312  
 Conc: 17.30 ng/ml



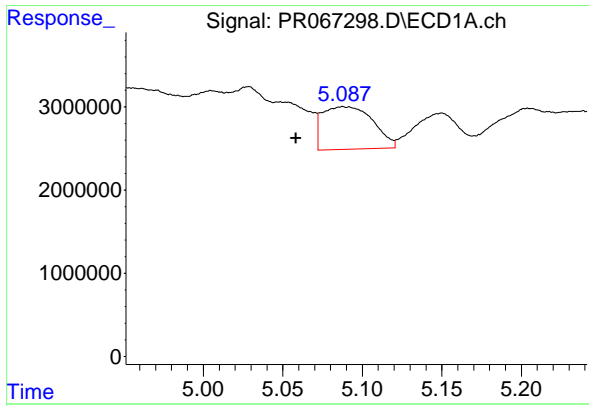
#18 AR-1242-3

R.T.: 4.954 min  
 Delta R.T.: -0.003 min  
 Response: 32085961  
 Conc: 239.20 ng/ml



#18 AR-1242-3

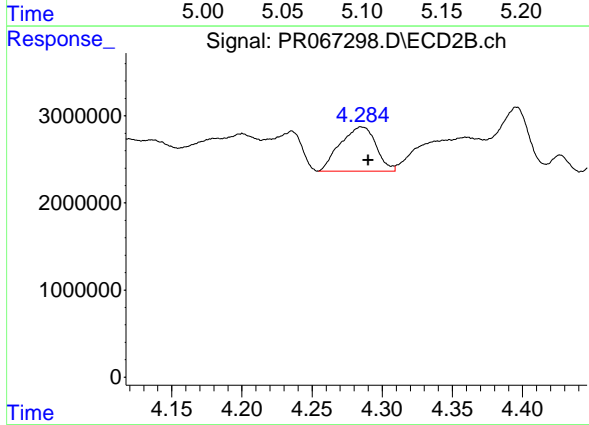
R.T.: 4.200 min  
 Delta R.T.: 0.002 min  
 Response: 9666277  
 Conc: 98.41 ng/ml



#19 AR-1242-4

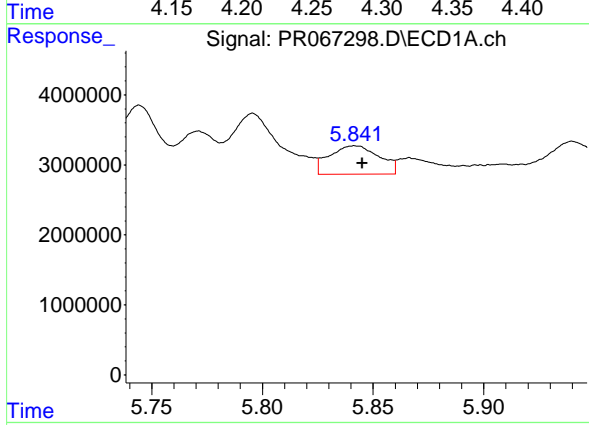
R.T.: 5.088 min  
 Delta R.T.: 0.029 min  
 Response: 11342345  
 Conc: 109.63 ng/ml

Instrument :  
 ECD\_R  
 ClientSampleId :  
 BHC51



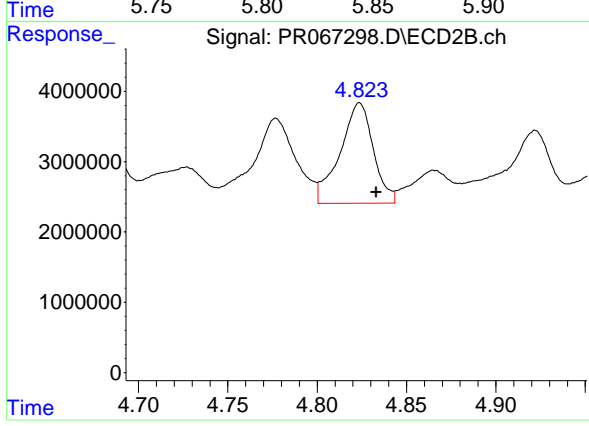
#19 AR-1242-4

R.T.: 4.285 min  
 Delta R.T.: -0.005 min  
 Response: 9006188  
 Conc: 90.93 ng/ml



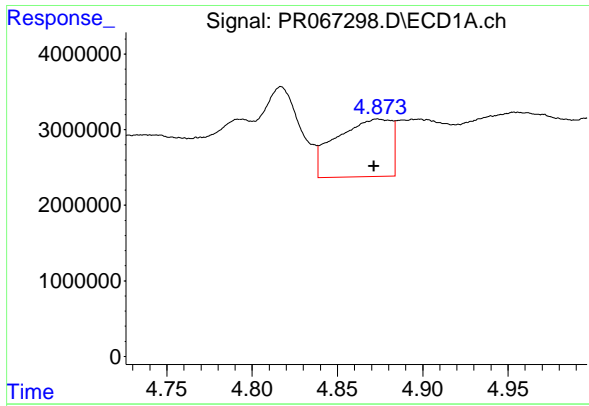
#20 AR-1242-5

R.T.: 5.842 min  
 Delta R.T.: -0.003 min  
 Response: 6344993  
 Conc: 60.31 ng/ml



#20 AR-1242-5

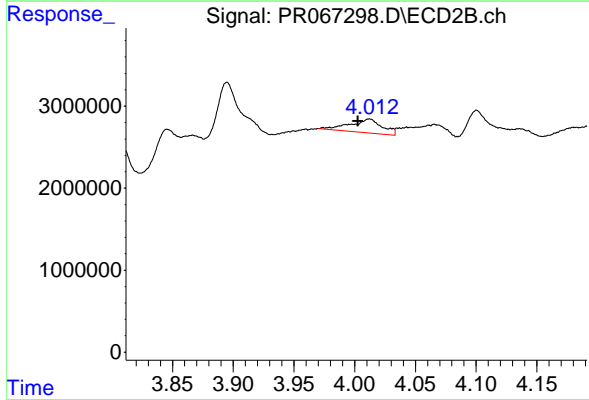
R.T.: 4.824 min  
 Delta R.T.: -0.009 min  
 Response: 18586489  
 Conc: 157.75 ng/ml



#21 AR-1248-1

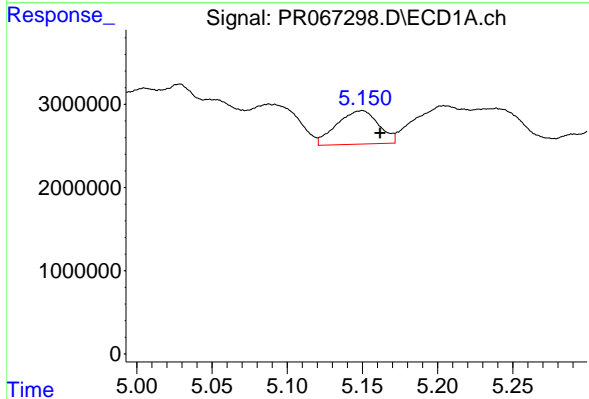
R.T.: 4.874 min  
 Delta R.T.: 0.002 min  
 Response: 17086393  
 Conc: 188.02 ng/ml

Instrument :  
 ECD\_R  
 ClientSampleId :  
 BHC51



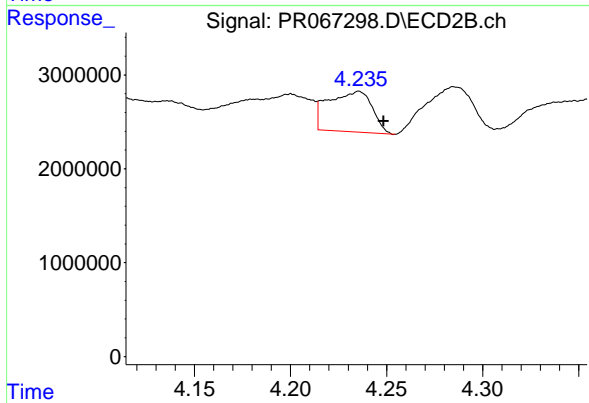
#21 AR-1248-1

R.T.: 4.012 min  
 Delta R.T.: 0.009 min  
 Response: 3069312  
 Conc: 33.94 ng/ml



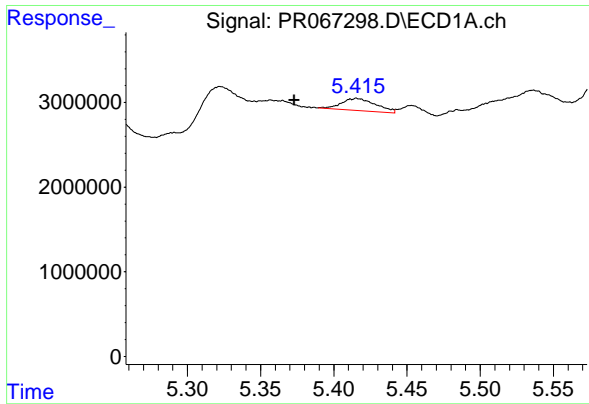
#22 AR-1248-2

R.T.: 5.150 min  
 Delta R.T.: -0.012 min  
 Response: 7855000  
 Conc: 52.77 ng/ml



#22 AR-1248-2

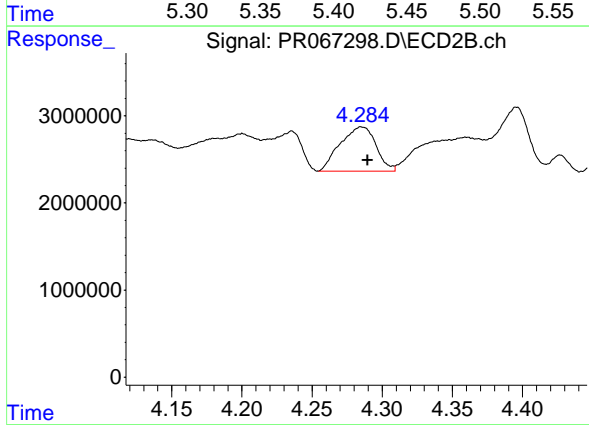
R.T.: 4.236 min  
 Delta R.T.: -0.013 min  
 Response: 6849302  
 Conc: 49.01 ng/ml



#23 AR-1248-3

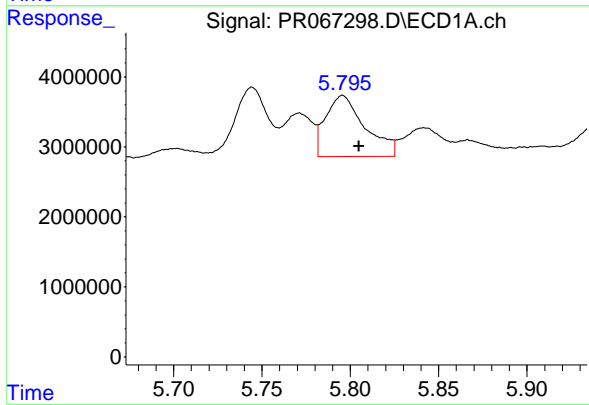
R.T.: 5.416 min  
 Delta R.T.: 0.043 min  
 Response: 2366390  
 Conc: 13.85 ng/ml

Instrument :  
 ECD\_R  
 ClientSampleId :  
 BHC51



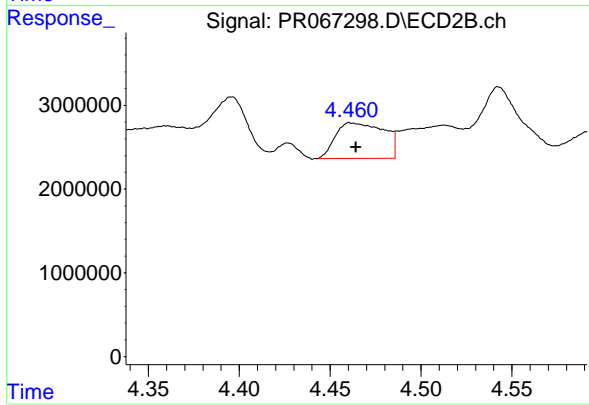
#23 AR-1248-3

R.T.: 4.285 min  
 Delta R.T.: -0.004 min  
 Response: 9006188  
 Conc: 64.40 ng/ml



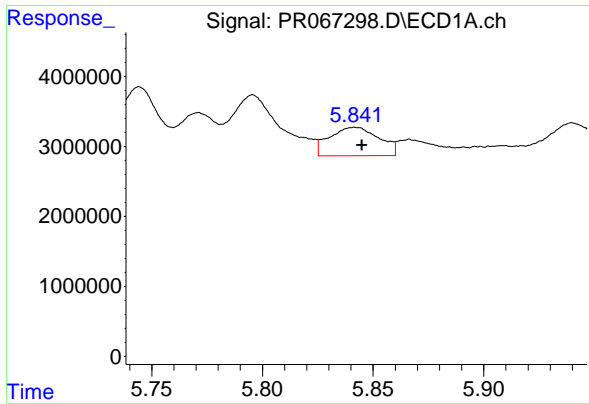
#24 AR-1248-4

R.T.: 5.796 min  
 Delta R.T.: -0.009 min  
 Response: 13577586  
 Conc: 86.10 ng/ml



#24 AR-1248-4

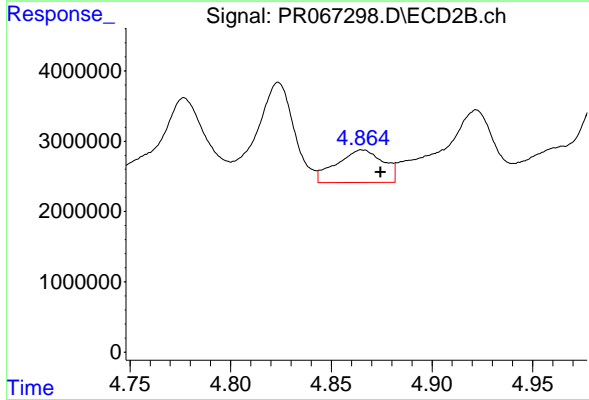
R.T.: 4.461 min  
 Delta R.T.: -0.003 min  
 Response: 7903429  
 Conc: 47.17 ng/ml



#25 AR-1248-5

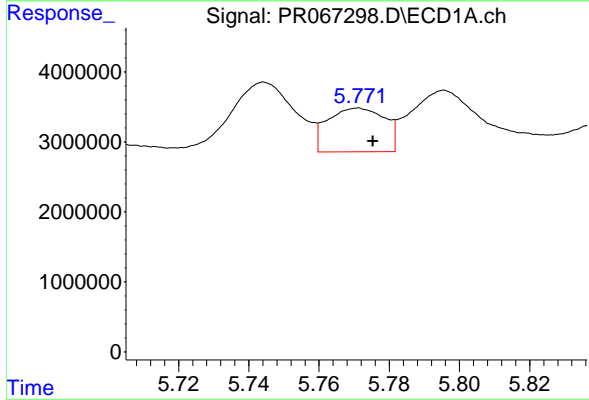
R.T.: 5.842 min  
 Delta R.T.: -0.003 min  
 Response: 6344993  
 Conc: 35.63 ng/ml

Instrument :  
 ECD\_R  
 ClientSampleId :  
 BHC51



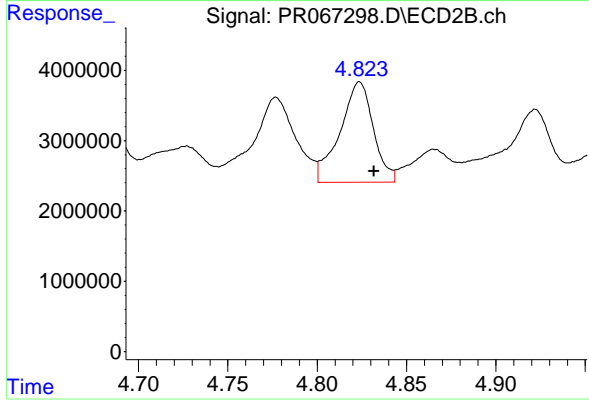
#25 AR-1248-5

R.T.: 4.865 min  
 Delta R.T.: -0.009 min  
 Response: 7461746  
 Conc: 48.30 ng/ml



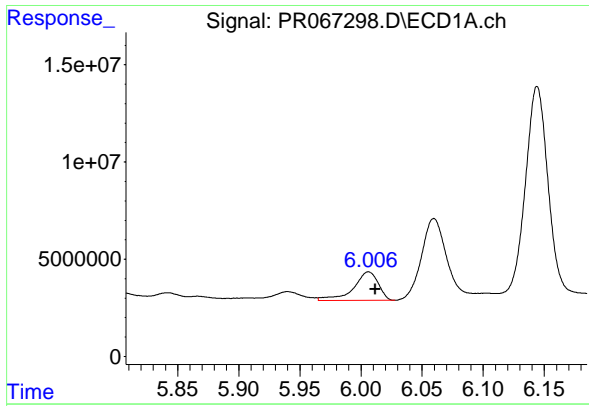
#26 AR-1254-1

R.T.: 5.771 min  
 Delta R.T.: -0.004 min  
 Response: 7043840  
 Conc: 36.95 ng/ml



#26 AR-1254-1

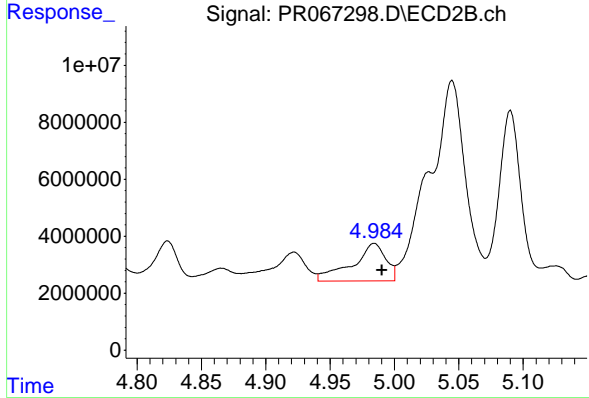
R.T.: 4.824 min  
 Delta R.T.: -0.008 min  
 Response: 18586489  
 Conc: 76.09 ng/ml



#27 AR-1254-2

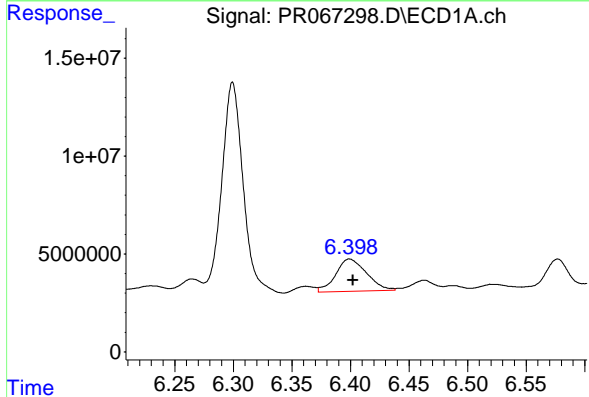
R.T.: 6.006 min  
 Delta R.T.: -0.006 min  
 Response: 20653353  
 Conc: 73.58 ng/ml

Instrument :  
 ECD\_R  
 ClientSampleId :  
 BHC51



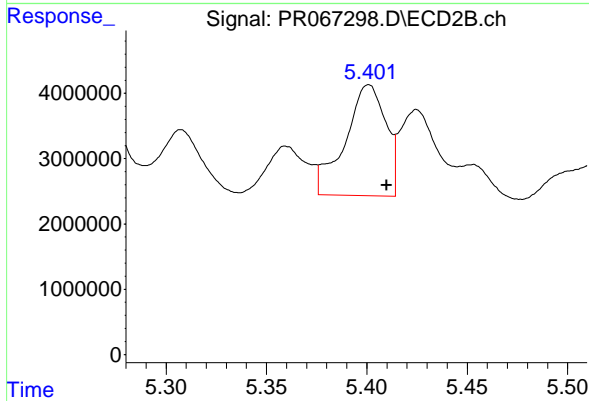
#27 AR-1254-2

R.T.: 4.984 min  
 Delta R.T.: -0.006 min  
 Response: 24078816  
 Conc: 111.23 ng/ml



#28 AR-1254-3

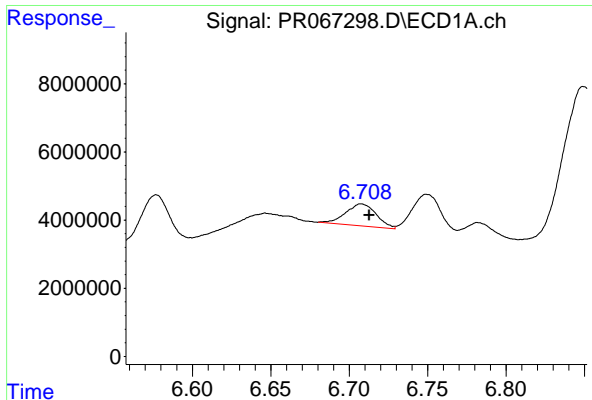
R.T.: 6.399 min  
 Delta R.T.: -0.003 min  
 Response: 30483816  
 Conc: 113.73 ng/ml



#28 AR-1254-3

R.T.: 5.401 min  
 Delta R.T.: -0.009 min  
 Response: 23979888  
 Conc: 70.51 ng/ml

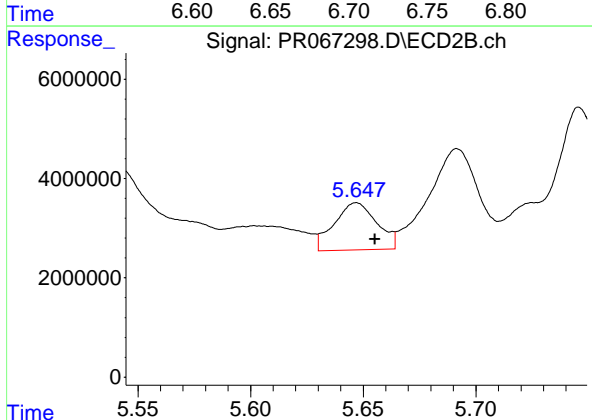




#29 AR-1254-4

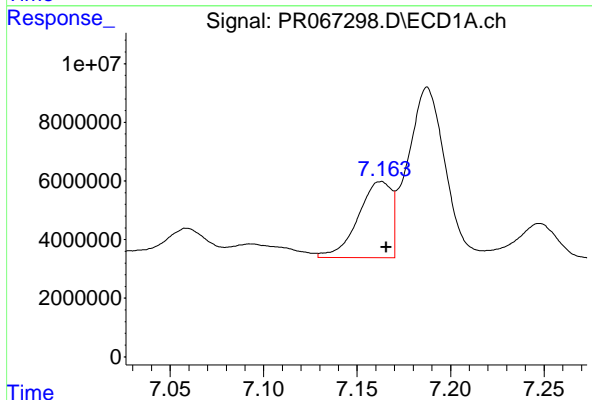
R.T.: 6.708 min  
 Delta R.T.: -0.005 min  
 Response: 8785546  
 Conc: 54.54 ng/ml

Instrument :  
 ECD\_R  
 ClientSampleId :  
 BHC51



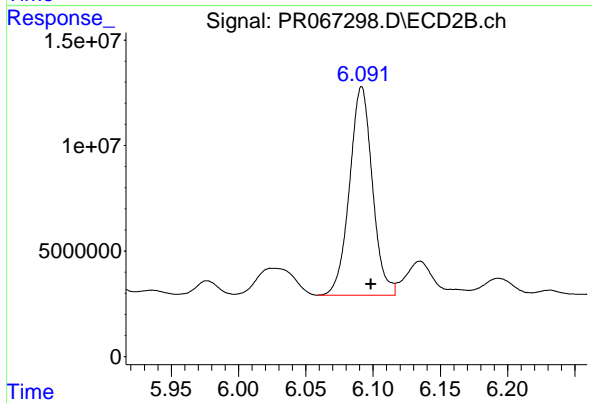
#29 AR-1254-4

R.T.: 5.647 min  
 Delta R.T.: -0.008 min  
 Response: 12495824  
 Conc: 63.68 ng/ml



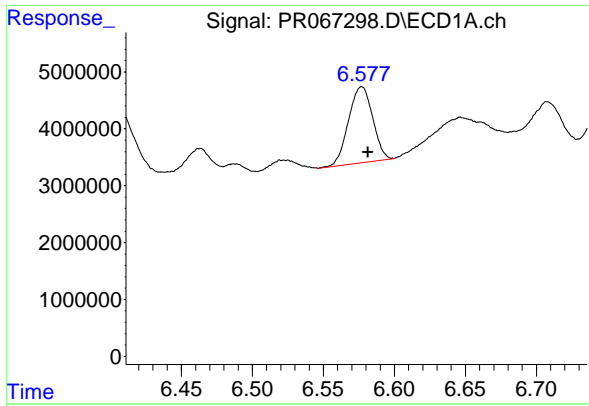
#30 AR-1254-5

R.T.: 7.163 min  
 Delta R.T.: -0.003 min  
 Response: 32292597  
 Conc: 168.19 ng/ml



#30 AR-1254-5

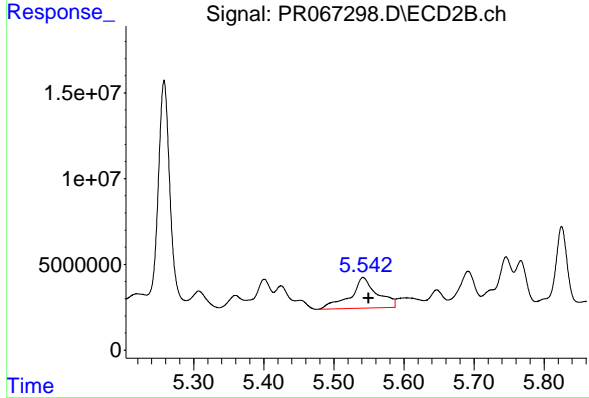
R.T.: 6.091 min  
 Delta R.T.: -0.007 min  
 Response: 116772885  
 Conc: 379.17 ng/ml



#31 AR-1260-1

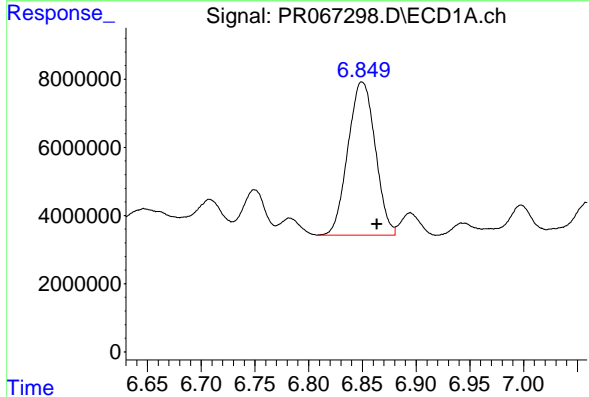
R.T.: 6.577 min  
 Delta R.T.: -0.004 min  
 Response: 15773450  
 Conc: 64.69 ng/ml

Instrument :  
 ECD\_R  
 ClientSampleId :  
 BHC51



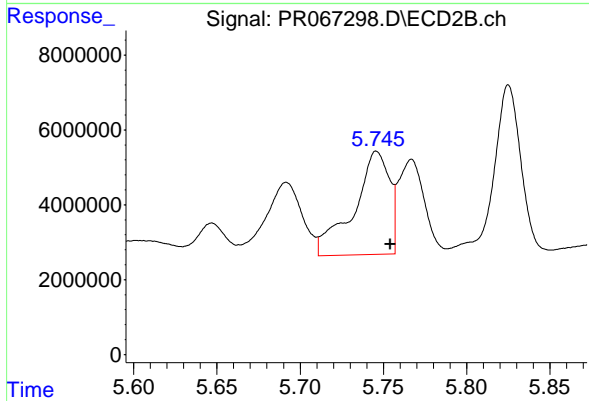
#31 AR-1260-1

R.T.: 5.542 min  
 Delta R.T.: -0.008 min  
 Response: 47749182  
 Conc: 183.27 ng/ml



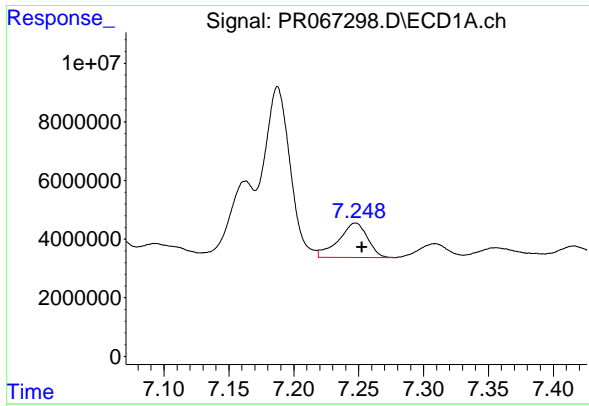
#32 AR-1260-2

R.T.: 6.850 min  
 Delta R.T.: -0.014 min  
 Response: 79556549  
 Conc: 307.29 ng/ml



#32 AR-1260-2

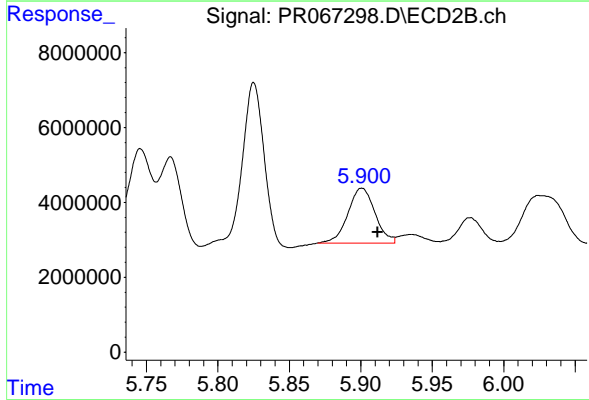
R.T.: 5.746 min  
 Delta R.T.: -0.008 min  
 Response: 41280032  
 Conc: 134.63 ng/ml



#33 AR-1260-3

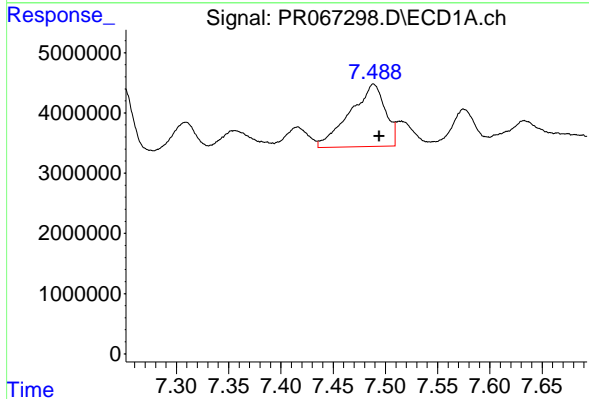
R.T.: 7.248 min  
 Delta R.T.: -0.005 min  
 Response: 18328320  
 Conc: 92.24 ng/ml

Instrument :  
 ECD\_R  
 ClientSampleId :  
 BHC51



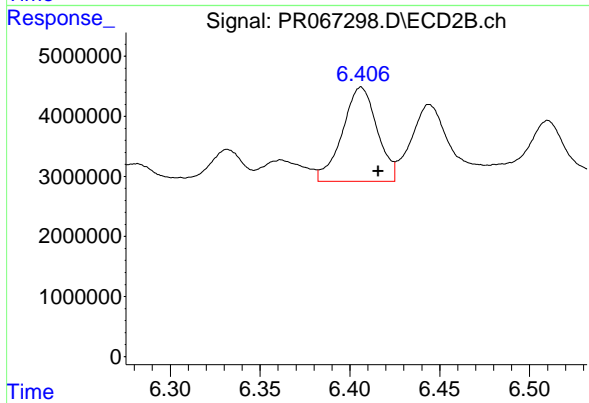
#33 AR-1260-3

R.T.: 5.901 min  
 Delta R.T.: -0.011 min  
 Response: 19374401  
 Conc: 66.09 ng/ml



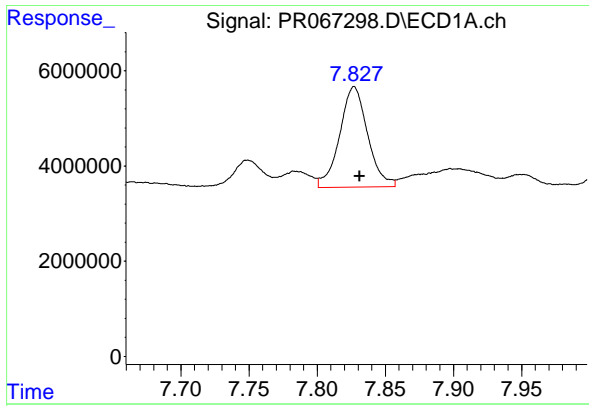
#34 AR-1260-4

R.T.: 7.489 min  
 Delta R.T.: -0.005 min  
 Response: 24387521  
 Conc: 116.75 ng/ml



#34 AR-1260-4

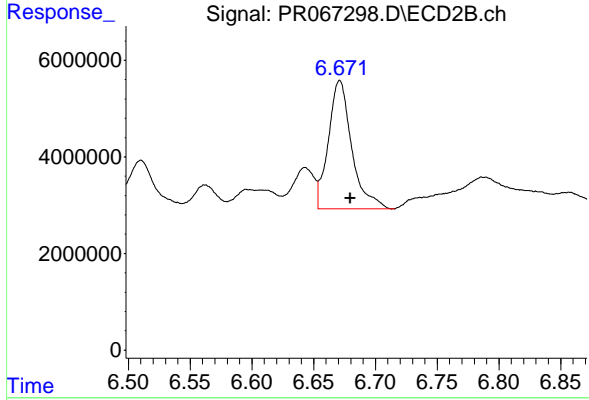
R.T.: 6.406 min  
 Delta R.T.: -0.010 min  
 Response: 21156786  
 Conc: 84.61 ng/ml



#35 AR-1260-5

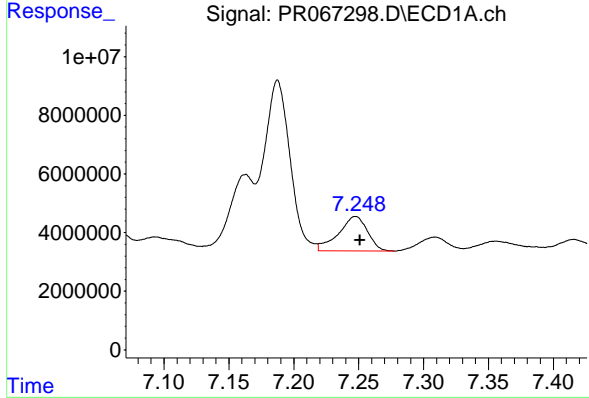
R.T.: 7.827 min  
 Delta R.T.: -0.004 min  
 Response: 30255150  
 Conc: 88.39 ng/ml

Instrument :  
 ECD\_R  
 ClientSampleId :  
 BHC51



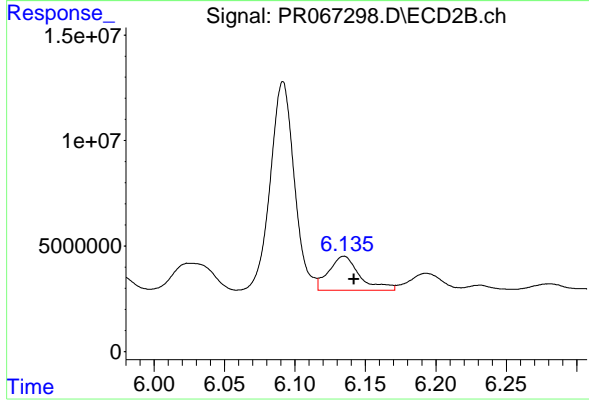
#35 AR-1260-5

R.T.: 6.671 min  
 Delta R.T.: -0.009 min  
 Response: 34987889  
 Conc: 64.09 ng/ml



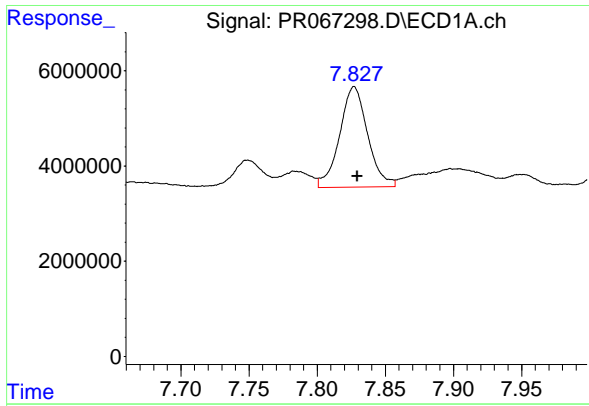
#36 AR-1262-1

R.T.: 7.248 min  
 Delta R.T.: -0.004 min  
 Response: 18328320  
 Conc: 70.83 ng/ml



#36 AR-1262-1

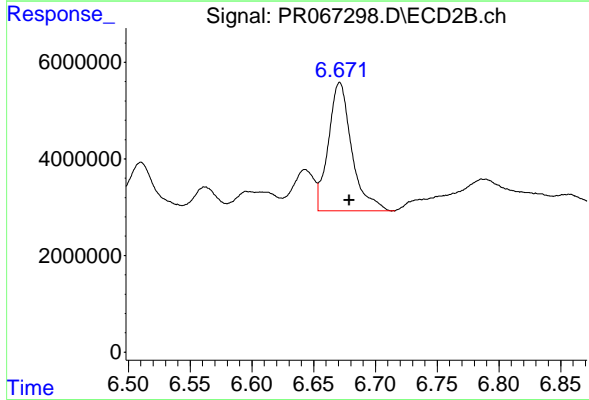
R.T.: 6.135 min  
 Delta R.T.: -0.007 min  
 Response: 24638958  
 Conc: 74.33 ng/ml



#37 AR-1262-2

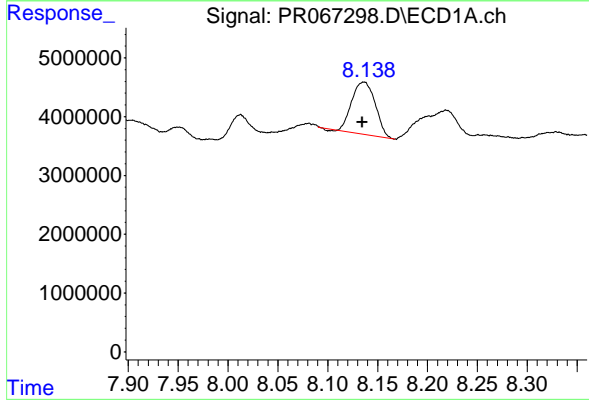
R.T.: 7.827 min  
 Delta R.T.: -0.002 min  
 Response: 30255150  
 Conc: 87.23 ng/ml

Instrument :  
 ECD\_R  
 ClientSampleId :  
 BHC51



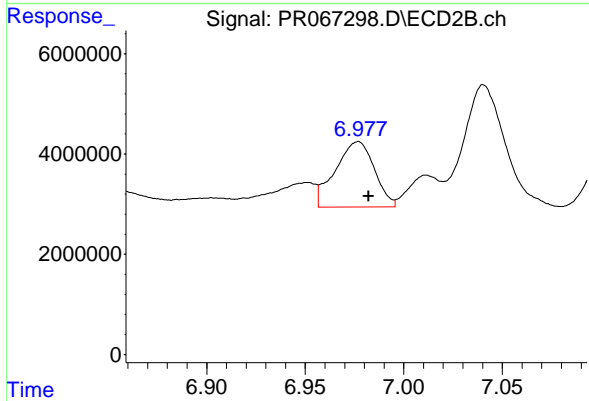
#37 AR-1262-2

R.T.: 6.671 min  
 Delta R.T.: -0.008 min  
 Response: 34987889  
 Conc: 62.86 ng/ml



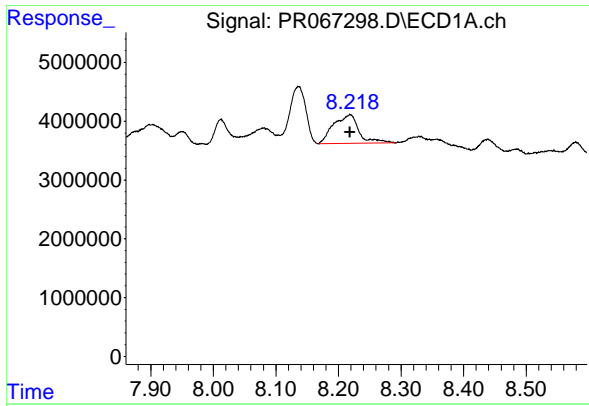
#38 AR-1262-3

R.T.: 8.136 min  
 Delta R.T.: 0.002 min  
 Response: 14546345  
 Conc: 63.78 ng/ml



#38 AR-1262-3

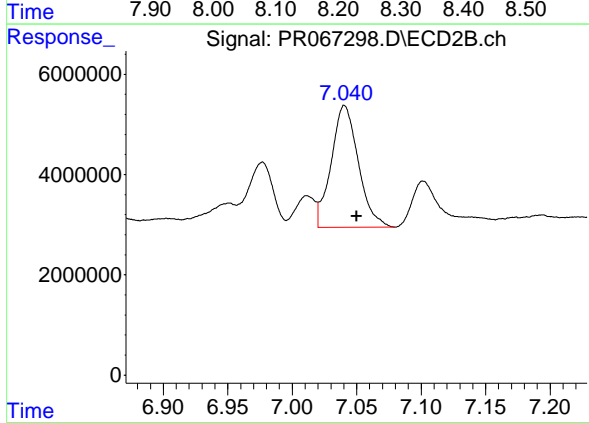
R.T.: 6.977 min  
 Delta R.T.: -0.005 min  
 Response: 18080495  
 Conc: 75.76 ng/ml



#39 AR-1262-4

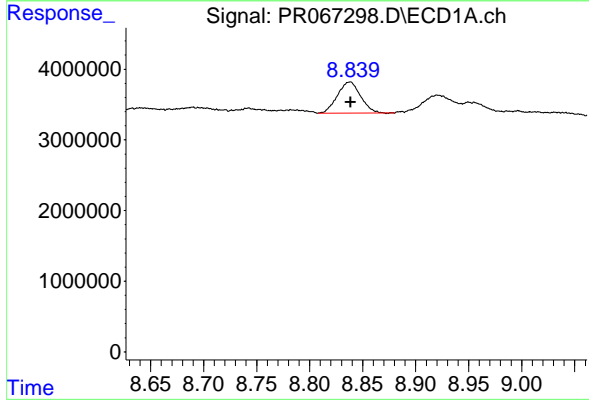
R.T.: 8.219 min  
 Delta R.T.: 0.000 min  
 Response: 13567813  
 Conc: 75.17 ng/ml

Instrument :  
 ECD\_R  
 ClientSampleId :  
 BHC51



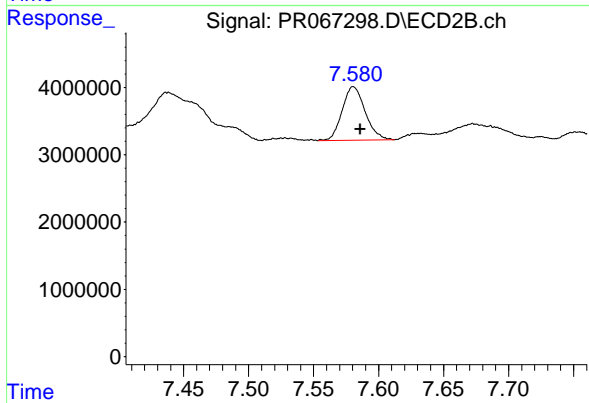
#39 AR-1262-4

R.T.: 7.040 min  
 Delta R.T.: -0.010 min  
 Response: 35659808  
 Conc: 83.57 ng/ml



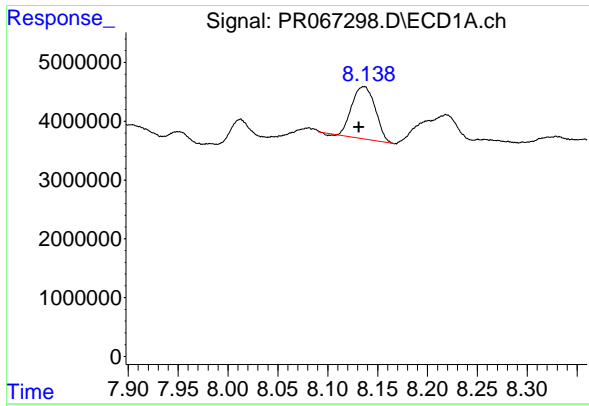
#40 AR-1262-5

R.T.: 8.838 min  
 Delta R.T.: 0.000 min  
 Response: 6684084  
 Conc: 65.25 ng/ml



#40 AR-1262-5

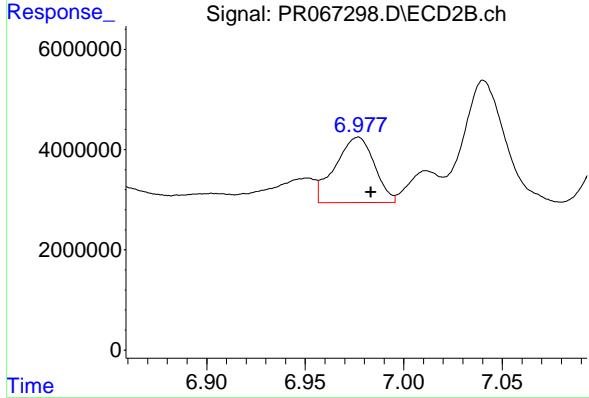
R.T.: 7.581 min  
 Delta R.T.: -0.005 min  
 Response: 9785393  
 Conc: 49.96 ng/ml



#41 AR-1268-1

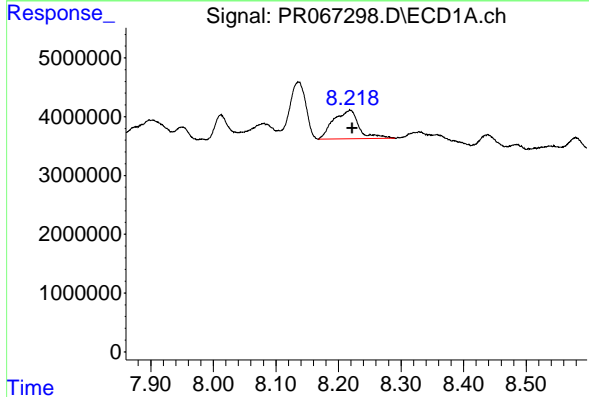
R.T.: 8.136 min  
 Delta R.T.: 0.005 min  
 Response: 14546345  
 Conc: 35.06 ng/ml

Instrument :  
 ECD\_R  
 ClientSampleId :  
 BHC51



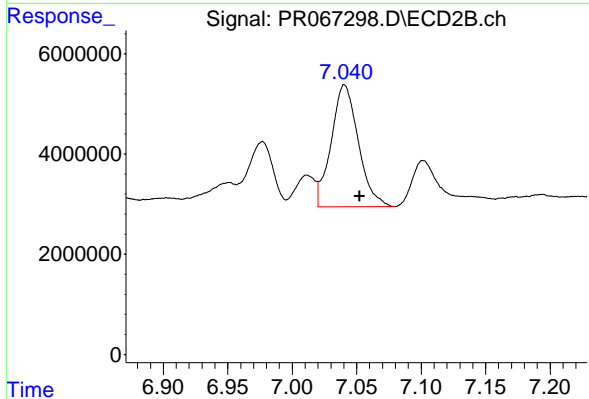
#41 AR-1268-1

R.T.: 6.977 min  
 Delta R.T.: -0.007 min  
 Response: 18080495  
 Conc: 27.17 ng/ml



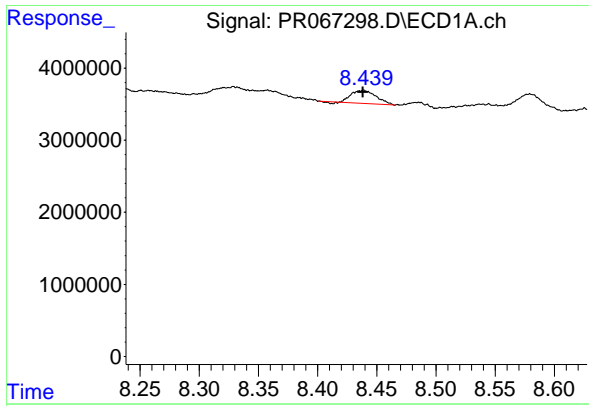
#42 AR-1268-2

R.T.: 8.219 min  
 Delta R.T.: -0.003 min  
 Response: 13567813  
 Conc: 36.62 ng/ml



#42 AR-1268-2

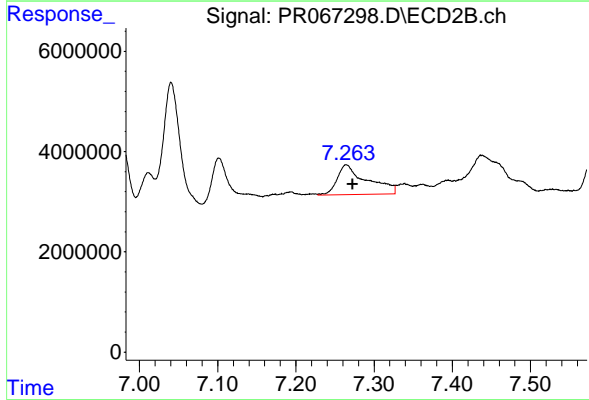
R.T.: 7.040 min  
 Delta R.T.: -0.012 min  
 Response: 35659808  
 Conc: 58.51 ng/ml



#43 AR-1268-3

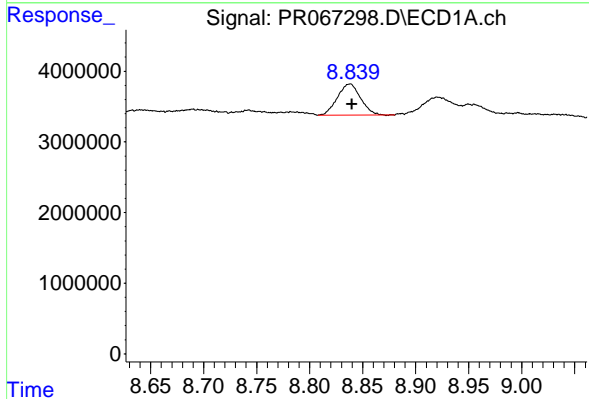
R.T.: 8.439 min  
 Delta R.T.: 0.000 min  
 Response: 2604793  
 Conc: 8.01 ng/ml

Instrument :  
 ECD\_R  
 ClientSampleId :  
 BHC51



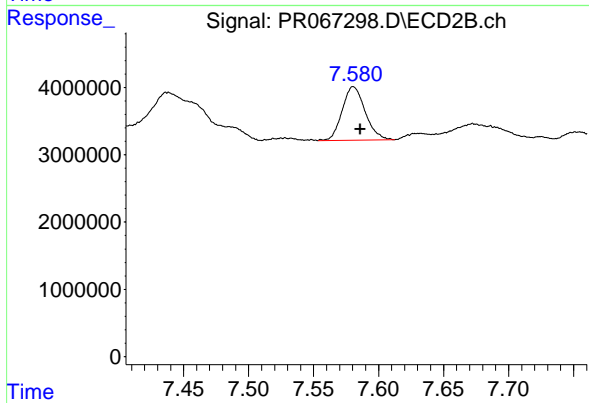
#43 AR-1268-3

R.T.: 7.264 min  
 Delta R.T.: -0.008 min  
 Response: 15828685  
 Conc: 29.59 ng/ml



#44 AR-1268-4

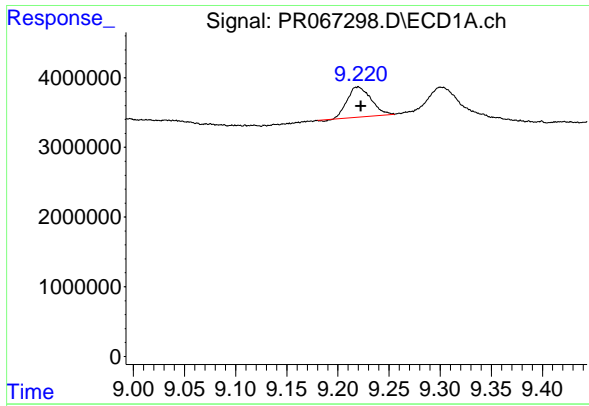
R.T.: 8.838 min  
 Delta R.T.: -0.002 min  
 Response: 6684084  
 Conc: 58.86 ng/ml



#44 AR-1268-4

R.T.: 7.581 min  
 Delta R.T.: -0.005 min  
 Response: 9785393  
 Conc: 44.40 ng/ml

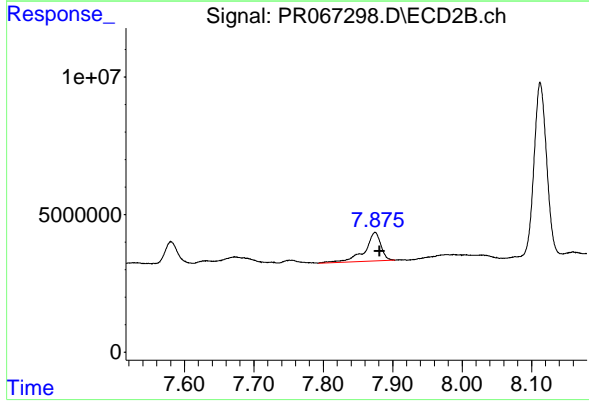




#45 AR-1268-5

R.T.: 9.220 min  
 Delta R.T.: -0.003 min  
 Response: 7007489  
 Conc: 8.32 ng/ml

Instrument :  
 ECD\_R  
 ClientSampleId :  
 BHC51



#45 AR-1268-5

R.T.: 7.875 min  
 Delta R.T.: -0.006 min  
 Response: 16906567  
 Conc: 11.33 ng/ml