

Data Path : Z:\pestpcbsrv\HPCHEM1\ECD_R\Data\PR060324\
 Data File : PR067288.D
 Signal(s) : Signal #1: ECD1A.ch Signal #2: ECD2B.ch
 Acq On : 03 Jun 2024 13:04
 Operator : AJ\MA
 Sample : P2648-05
 Misc :
 ALS Vial : 19 Sample Multiplier: 1

Instrument :

ECD_R

ClientSampleId :

BHBT9

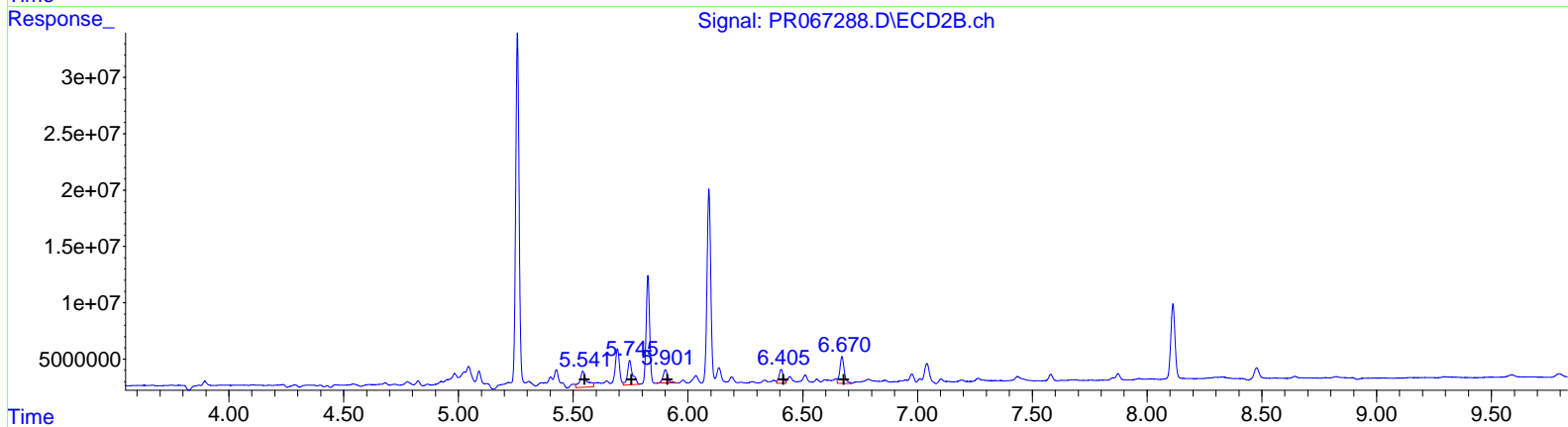
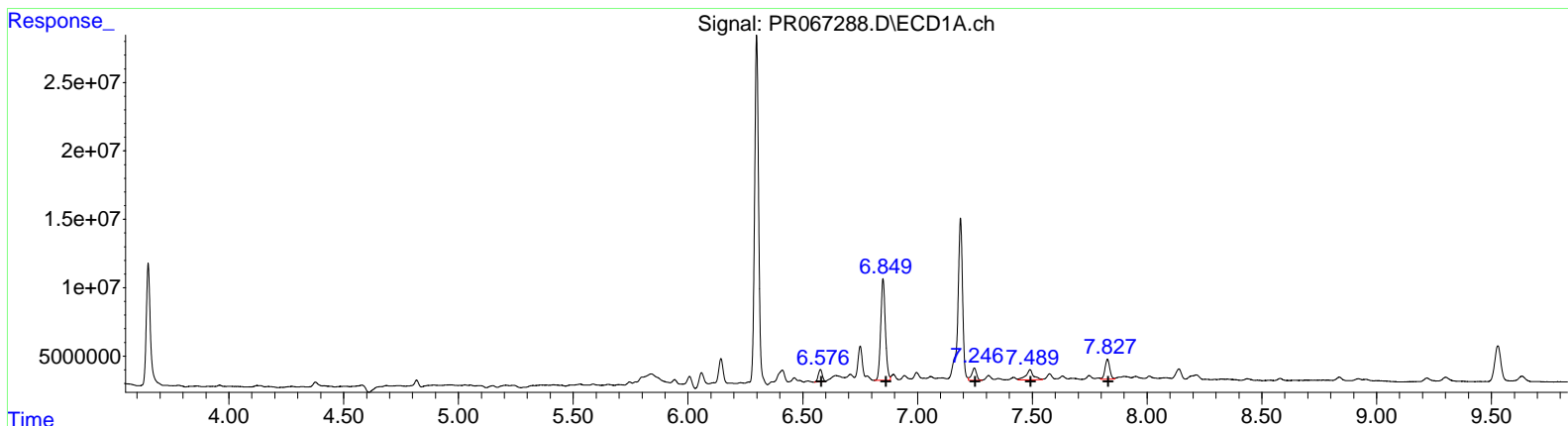
Manual IntegrationsAPPROVED

Reviewed By :Yogesh Patel 06/04/2024

Supervised By :Ankita Jodhani 06/04/2024

Integration File signal 1: autoint1.e
 Integration File signal 2: autoint2.e
 Quant Time: Jun 04 03:23:24 2024
 Quant Method : Z:\pestpcbsrv\HPCHEM1\ECD_R\Method\PR052124CLP.M
 Quant Title : GC EXTRACTABLES
 QLast Update : Wed May 22 04:28:16 2024
 Response via : Initial Calibration
 Integrator: ChemStation

Volume Inj. : 1 µl
 Signal #1 Phase : ZB MR1 Signal #2 Phase: ZB MR2
 Signal #1 Info : 30Mx0.32mmx 0.5µm Signal #2 Info : 30M x 0.32mm x 0.25µm



QEdit

(31) AR-1260-1 (L7)			
R.T.	Response	Conc	
6.58	10598175	43.46	
6.85	104871372	405.07	
7.25	13007946	65.47	
7.49	17454904	83.56	
7.83	21027185	61.43	
(31) AR-1260-1 #2 (L7)			
R.T.	Response	Conc	
5.54	29127963	111.80	
5.75	33310011	108.64	
5.90	16691980	56.94	
6.41	15954737	63.81	
6.67	31786624	58.23	

(+) = Expected Retention Time

Data Path : Z:\pestpcbsrv\HPCHEM1\ECD_R\Data\PR060324\
 Data File : PR067288.D
 Signal(s) : Signal #1: ECD1A.ch Signal #2: ECD2B.ch
 Acq On : 03 Jun 2024 13:04
 Operator : AJ\MA
 Sample : P2648-05
 Misc :
 ALS Vial : 19 Sample Multiplier: 1

Instrument :

ECD_R

ClientSampleId :

BHBT9

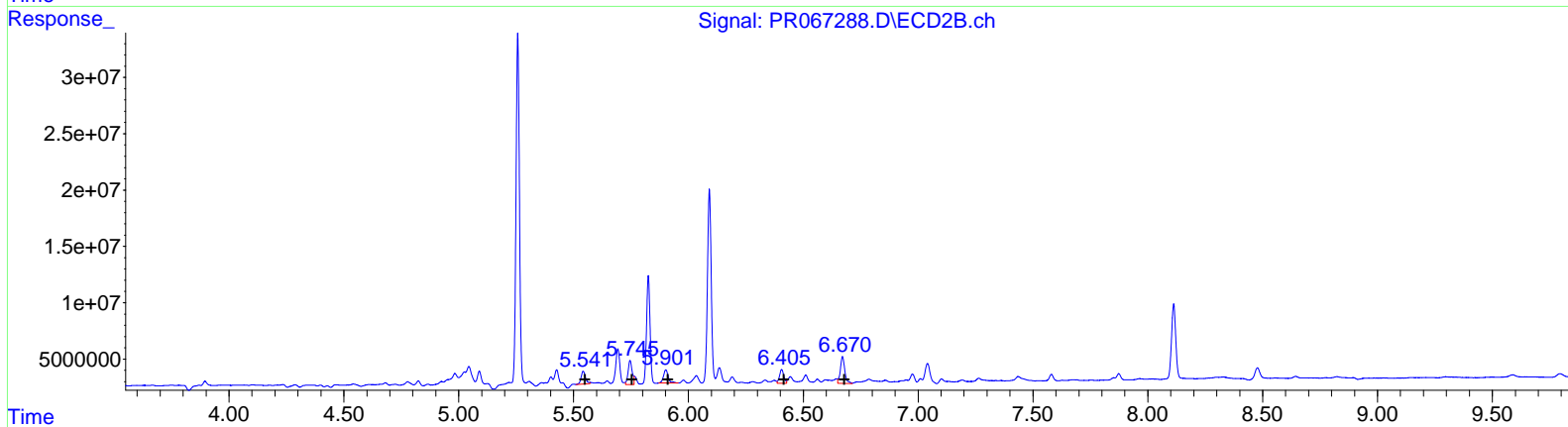
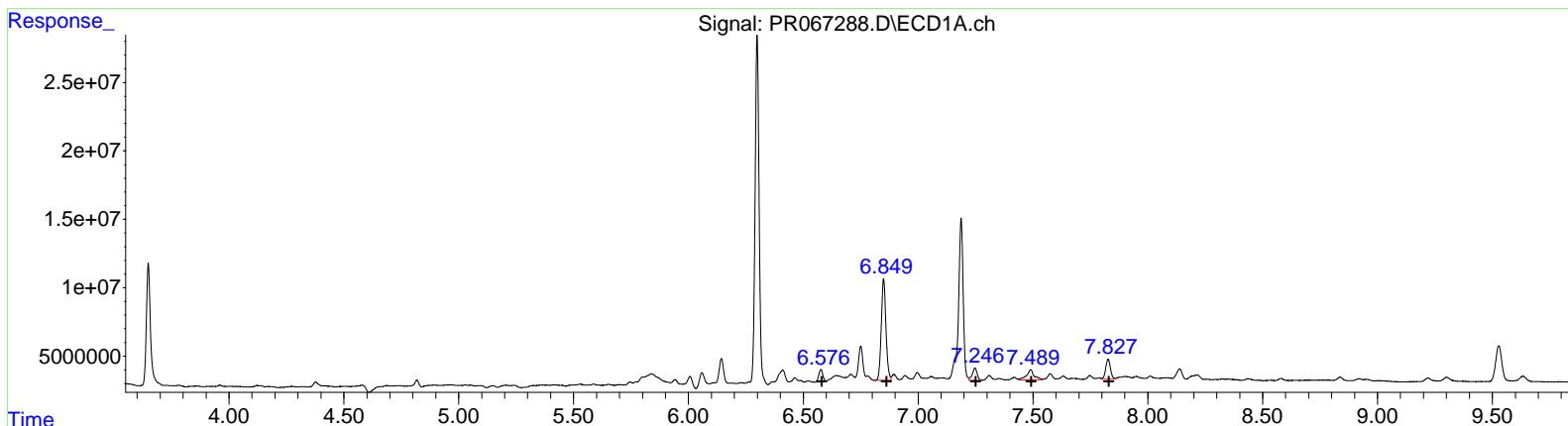
Manual IntegrationsAPPROVED

Reviewed By :Yogesh Patel 06/04/2024

Supervised By :Ankita Jodhani 06/04/2024

Integration File signal 1: autoint1.e
 Integration File signal 2: autoint2.e
 Quant Time: Jun 04 03:23:24 2024
 Quant Method : Z:\pestpcbsrv\HPCHEM1\ECD_R\Method\PR052124CLP.M
 Quant Title : GC EXTRACTABLES
 QLast Update : Wed May 22 04:28:16 2024
 Response via : Initial Calibration
 Integrator: ChemStation

Volume Inj. : 1 µl
 Signal #1 Phase : ZB MR1 Signal #2 Phase: ZB MR2
 Signal #1 Info : 30Mx0.32mmx 0.5µm Signal #2 Info : 30M x 0.32mm x 0.25µm



QEdit

(31) AR-1260-1 (L7)			
R.T.	Response	Conc	
6.58	10598175	43.46	
6.85	104871372	405.07	
7.25	13007946	65.47	
7.49	17454904	83.56	
7.83	21027185	61.43	
(31) AR-1260-1 #2 (L7)			
R.T.	Response	Conc	
5.54	15164488	58.21	
5.75	26477822	86.35	
5.90	16691980	56.94	
6.41	15954737	63.81	
6.67	31786624	58.23	

(+) = Expected Retention Time