

Data Path : Z:\pestpcbsrv\HPCHEM1\ECD_P\Data\PP060322\
 Data File : PP048423.D
 Signal(s) : Signal #1: ECD1A.ch Signal #2: ECD2B.ch
 Acq On : 03 Jun 2022 22:16
 Operator : YP\AJ
 Sample : AR1254CCC500
 Misc :
 ALS Vial : 4 Sample Multiplier: 1

Instrument :
 ECD_R
 ClientSampleId :

Integration File signal 1: autoint1.e
 Integration File signal 2: autoint2.e
 Quant Time: Jun 04 01:07:09 2022
 Quant Method : Z:\pestpcbsrv\HPCHEM1\ECD_P\methods\PP052722.M
 Quant Title : GC EXTRACTABLES
 QLast Update : Fri May 27 23:53:39 2022
 Response via : Initial Calibration
 Integrator: ChemStation

Volume Inj. : 2 µl
 Signal #1 Phase : ZB-MR1 Signal #2 Phase: ZB-MR2
 Signal #1 Info : 30Mx0.32mmx 0.50µ Signal #2 Info : 30M x 0.32mm x 0.25µm

Compound	RT#1	RT#2	Resp#1	Resp#2	ng/ml	ng/ml
System Monitoring Compounds						
1) SA Tetrachlo...	4.033	3.212	110.6E6	92258936	47.212	46.814
2) SA Decachlor...	10.382	8.637	87538180	72623888	45.039	44.927
Target Compounds						
3) L1 AR-1016-1	5.322	4.392	1288801	670634	15.283	9.971 #
4) L1 AR-1016-2	5.348	4.392	1942971	670634	16.422	7.201 #
5) L1 AR-1016-3	5.414	4.580	1176800	441396	17.415	8.616 #
6) L1 AR-1016-4	5.522	4.626	1092288	19125791	17.720	501.978 #
7) L1 AR-1016-5	5.845	4.853	14109728	10525197	250.487	220.444
8) L2 AR-1221-1	4.272	0.000	243170	0	9.198	N.D. #
9) L2 AR-1221-2	4.367	3.529f	1449766	1130571	70.786	73.607
10) L2 AR-1221-3	4.449	3.616	466036	258479	7.444	5.212 #
11) L3 AR-1232-1	4.449	3.616	466036	258479	8.972	5.985 #
12) L3 AR-1232-2	5.021	4.392	1092991	670634	45.526	16.645 #
13) L3 AR-1232-3	5.348	4.580	1942971	441396	39.155	21.395 #
14) L3 AR-1232-4	5.522	4.702f	1092288	857574	45.693	49.416
15) L3 AR-1232-5	5.620	4.853f	23892954	10525197	1462.476	537.337 #
16) L4 AR-1242-1	5.322	4.392	1288801	670634	23.047	14.063 #
17) L4 AR-1242-2	5.348	4.392	1942971	670634	23.624	10.093 #
18) L4 AR-1242-3	5.414	4.580	1176800	441396	23.973	12.725 #
19) L4 AR-1242-4	5.522	4.702f	1092288	857574	27.602	26.700
20) L4 AR-1242-5	6.337	5.234f	13929040	47094721	327.055	1127.689 #
21) L5 AR-1248-1	5.322	4.392	1288801	670634	29.879	18.323 #
22) L5 AR-1248-2	5.620	4.626f	23892954	19125791	417.791	401.605
23) L5 AR-1248-3	5.845	4.702f	14109728	857574	208.463	17.311 #
24) L5 AR-1248-4	6.293	4.853f	20692351	10525197	266.076	180.662 #
25) L5 AR-1248-5	6.337	5.277f	13929040	6204666	183.116	102.869 #
26) L6 AR-1254-1	6.261	5.234f	40535929	47094721	558.376	537.216
27) L6 AR-1254-2	6.504	5.395f	61678873	41291847	518.364	549.561
28) L6 AR-1254-3	6.911	5.830f	61679660	65251641	519.216	531.819
29) L6 AR-1254-4	7.230	6.080f	44683899	39604298	495.390	527.441
30) L6 AR-1254-5	7.695	6.535f	49663516	55986200	535.949	553.023
31) L7 AR-1260-1	7.091	5.973	24713571	29735843	264.780	347.367 #
32) L7 AR-1260-2	7.378	6.178	27354350	25214264	244.703	244.615
33) L7 AR-1260-3	7.763f	6.343	7940915	25511309	92.706	257.631 #
34) L7 AR-1260-4	8.019	6.860f	22372349	2697200	215.623	32.399 #
35) L7 AR-1260-5	8.389	7.125f	7721407	6063847	37.418	30.562
36) L8 AR-1262-1	7.763f	6.609	7940915	4381897	69.627	40.557 #
37) L8 AR-1262-2	8.389	6.900f	7721407	13759118	36.225	139.031 #
38) L8 AR-1262-3	8.757f	7.448	5938629	-769360	63.724	N.D. #
39) L8 AR-1262-4	0.000	7.503f	0	4882080	N.D.	33.520 #
40) L8 AR-1262-5	9.563	8.049f	339174	360002	4.285	5.334
41) L9 AR-1268-1	8.757f	7.448	5938629	-769360	22.449	N.D. #

Data Path : Z:\pestpcbsrv\HPCHEM1\ECD_P\Data\PP060322\
 Data File : PP048423.D
 Signal(s) : Signal #1: ECD1A.ch Signal #2: ECD2B.ch
 Acq On : 03 Jun 2022 22:16
 Operator : YP\AJ
 Sample : AR1254CCC500
 Misc :
 ALS Vial : 4 Sample Multiplier: 1

Instrument :
 ECD_R
 ClientSampleId :

Integration File signal 1: autoint1.e
 Integration File signal 2: autoint2.e
 Quant Time: Jun 04 01:07:09 2022
 Quant Method : Z:\pestpcbsrv\HPCHEM1\ECD_P\methods\PP052722.M
 Quant Title : GC EXTRACTABLES
 QLast Update : Fri May 27 23:53:39 2022
 Response via : Initial Calibration
 Integrator: ChemStation

Volume Inj. : 2 µl
 Signal #1 Phase : ZB-MR1 Signal #2 Phase: ZB-MR2
 Signal #1 Info : 30Mx0.32mmx 0.50µ Signal #2 Info : 30M x 0.32mm x 0.25µm

	Compound	RT#1	RT#2	Resp#1	Resp#2	ng/ml	ng/ml
42)	L9 AR-1268-2	0.000	7.503f	0	4882080	N.D.	22.564 #
43)	L9 AR-1268-3	9.084	7.735f	729960	173834	3.551	0.935 #
44)	L9 AR-1268-4	9.563	8.049f	339174	360002	3.776	4.382
45)	L9 AR-1268-5	10.015	8.364f	857782	322440	1.215	0.532 #

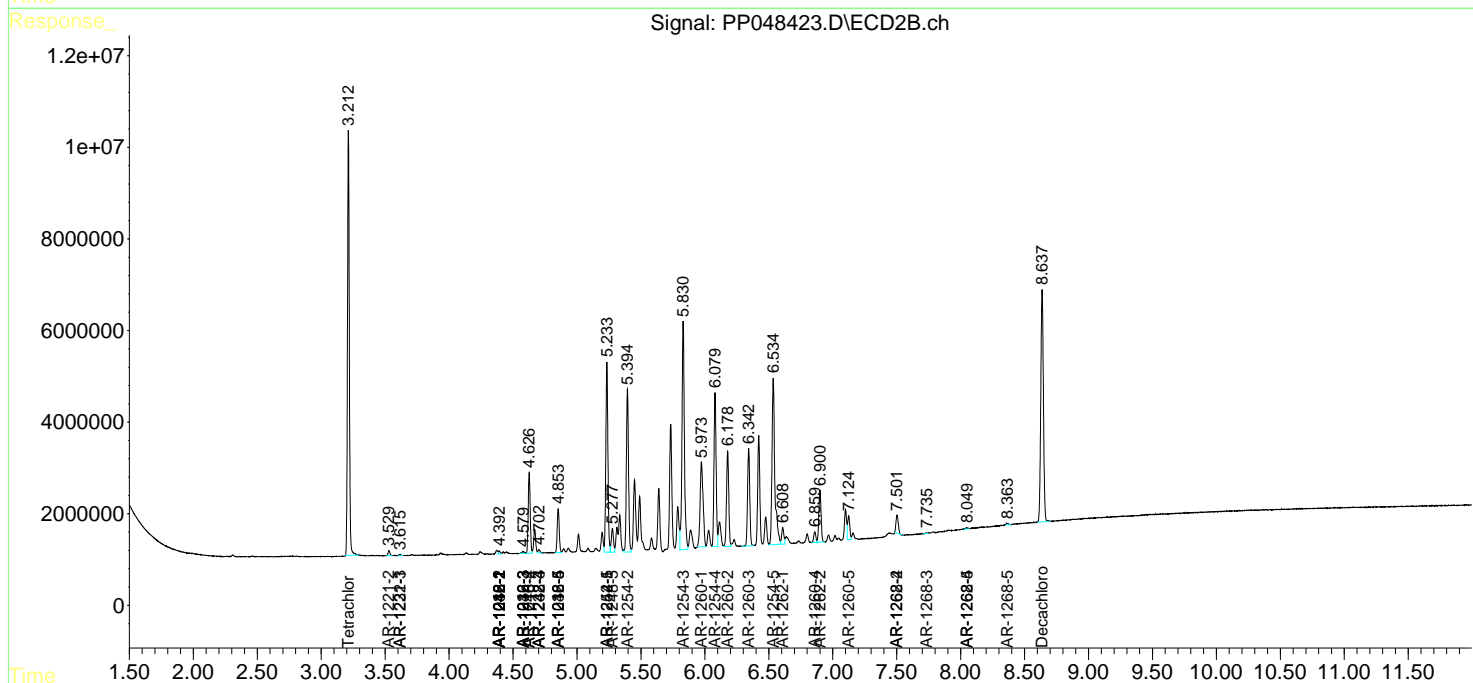
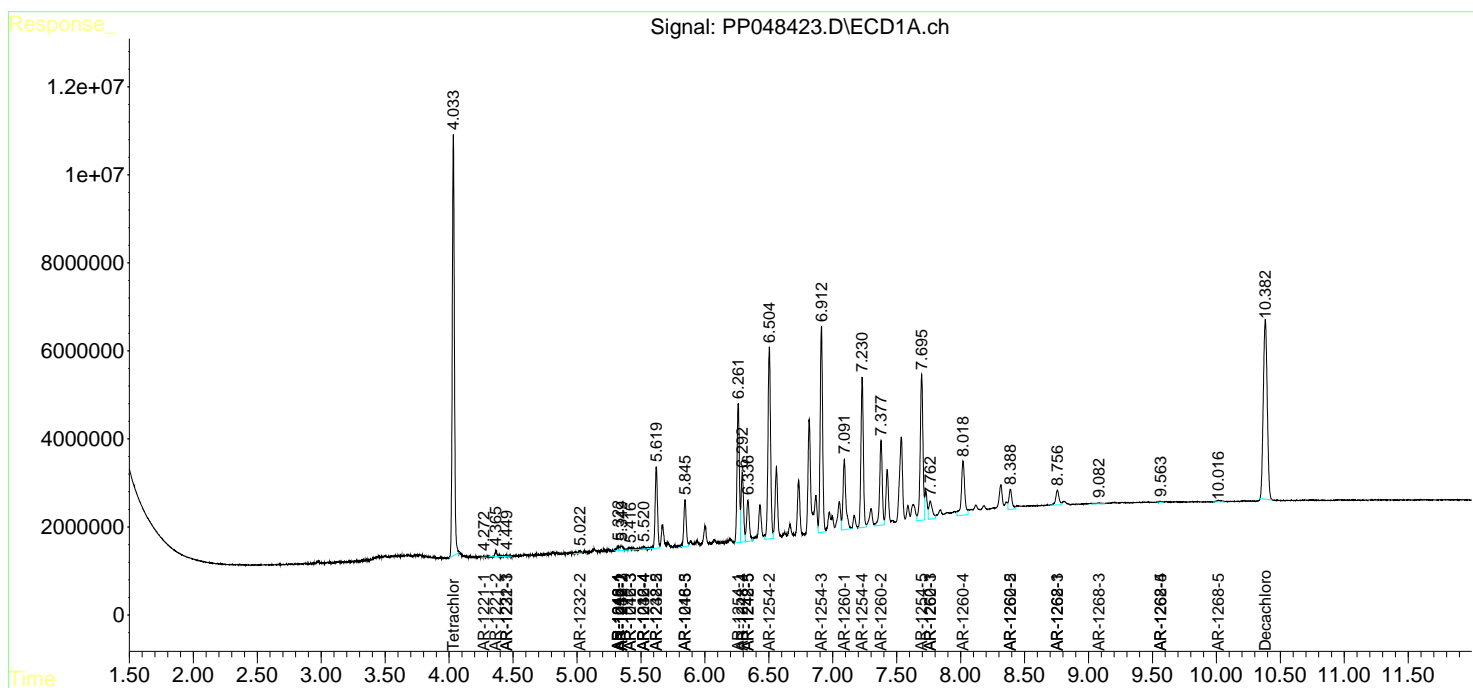
(f)=RT Delta > 1/2 Window (#)=Amounts differ by > 25% (m)=manual int.

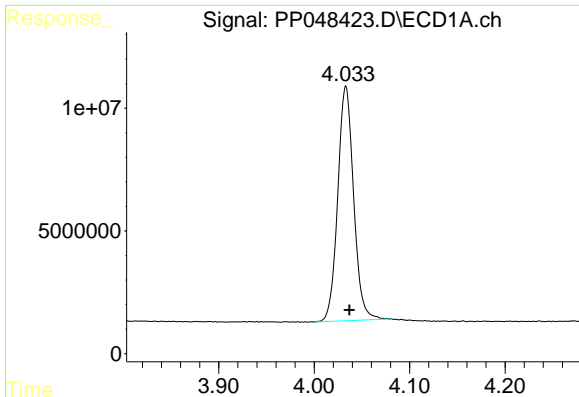
Data Path : Z:\pestpcbsrv\HPCHEM1\ECD_P\Data\PP060322\
 Data File : PP048423.D
 Signal(s) : Signal #1: ECD1A.ch Signal #2: ECD2B.ch
 Acq On : 03 Jun 2022 22:16
 Operator : YP\AJ
 Sample : AR1254CCC500
 Misc :
 ALS Vial : 4 Sample Multiplier: 1

Instrument :
 ECD_R
 ClientSampleId :

Integration File signal 1: autoint1.e
 Integration File signal 2: autoint2.e
 Quant Time: Jun 04 01:07:09 2022
 Quant Method : Z:\pestpcbsrv\HPCHEM1\ECD_P\methods\PP052722.M
 Quant Title : GC EXTRACTABLES
 QLast Update : Fri May 27 23:53:39 2022
 Response via : Initial Calibration
 Integrator: ChemStation

Volume Inj. : 2 µl
 Signal #1 Phase : ZB-MR1 Signal #2 Phase: ZB-MR2
 Signal #1 Info : 30Mx0.32mmx 0.50µ Signal #2 Info : 30M x 0.32mm x 0.25µm

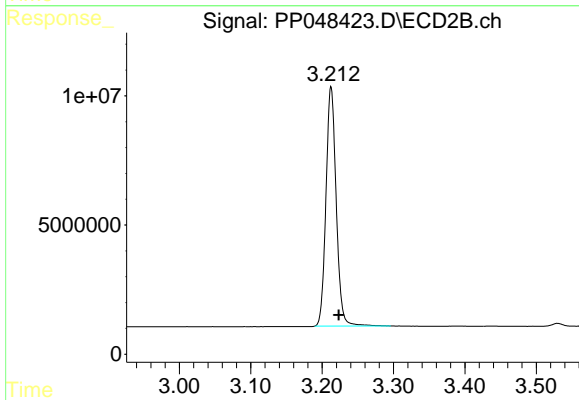




#1 Tetrachloro-m-xylene

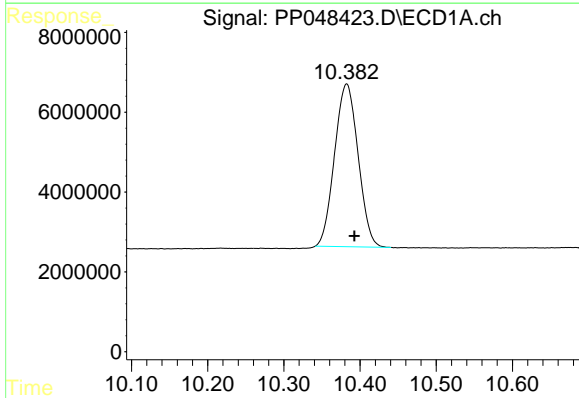
R.T.: 4.033 min
 Delta R.T.: -0.004 min
 Response: 110559481
 Conc: 47.21 ng/ml

Instrument :
 ECD_R
 ClientSampleId :



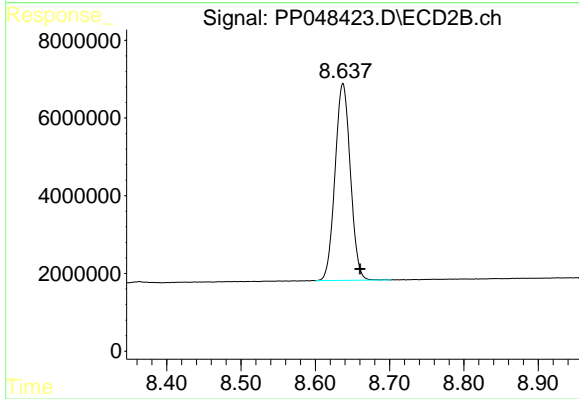
#1 Tetrachloro-m-xylene

R.T.: 3.212 min
 Delta R.T.: -0.011 min
 Response: 92258936
 Conc: 46.81 ng/ml



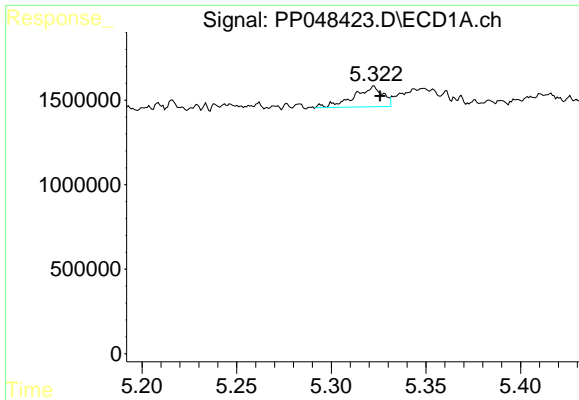
#2 Decachlorobiphenyl

R.T.: 10.382 min
 Delta R.T.: -0.010 min
 Response: 87538180
 Conc: 45.04 ng/ml



#2 Decachlorobiphenyl

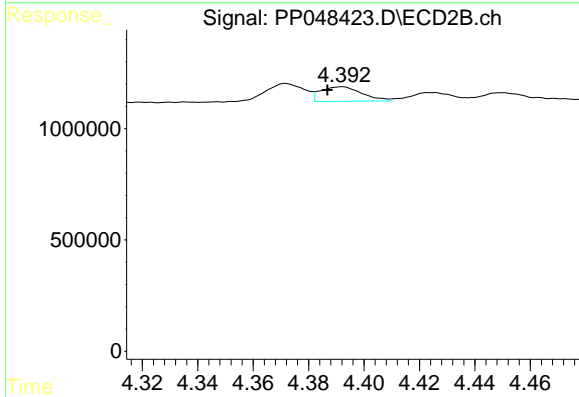
R.T.: 8.637 min
 Delta R.T.: -0.023 min
 Response: 72623888
 Conc: 44.93 ng/ml



#3 AR-1016-1

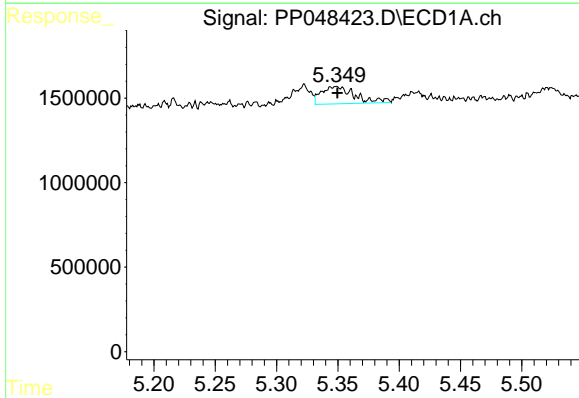
R.T.: 5.322 min
 Delta R.T.: -0.004 min
 Response: 1288801
 Conc: 15.28 ng/ml

Instrument :
 ECD_R
 ClientSampleId :



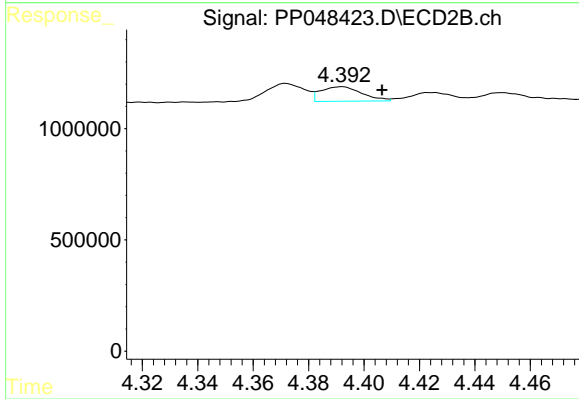
#3 AR-1016-1

R.T.: 4.392 min
 Delta R.T.: 0.006 min
 Response: 670634
 Conc: 9.97 ng/ml



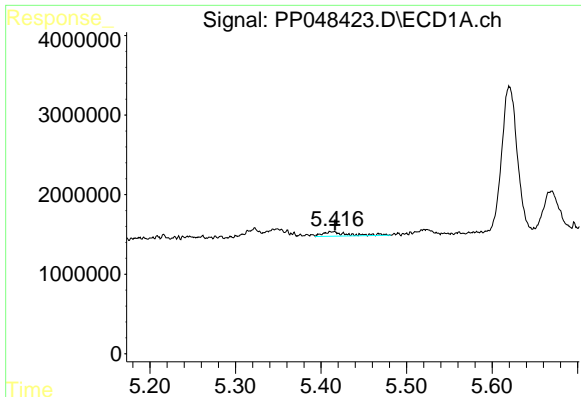
#4 AR-1016-2

R.T.: 5.348 min
 Delta R.T.: -0.001 min
 Response: 1942971
 Conc: 16.42 ng/ml



#4 AR-1016-2

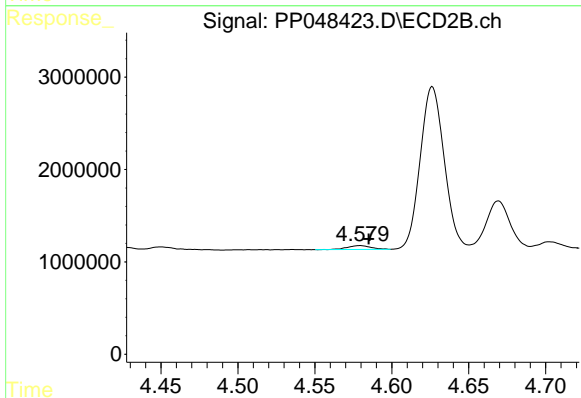
R.T.: 4.392 min
 Delta R.T.: -0.014 min
 Response: 670634
 Conc: 7.20 ng/ml



#5 AR-1016-3

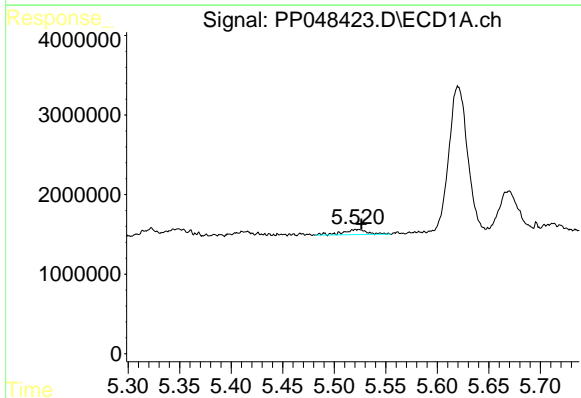
R.T.: 5.414 min
 Delta R.T.: -0.003 min
 Response: 1176800
 Conc: 17.41 ng/ml

Instrument :
 ECD_R
 ClientSampleId :



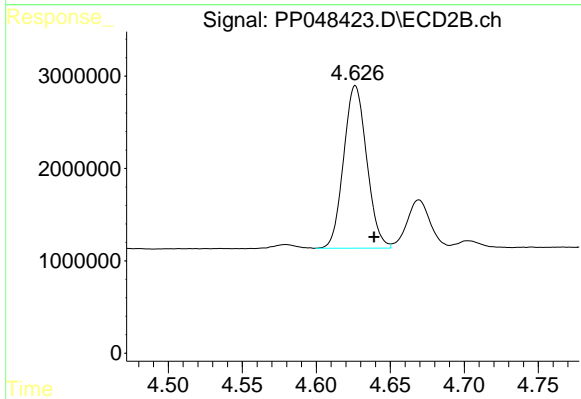
#5 AR-1016-3

R.T.: 4.580 min
 Delta R.T.: -0.005 min
 Response: 441396
 Conc: 8.62 ng/ml



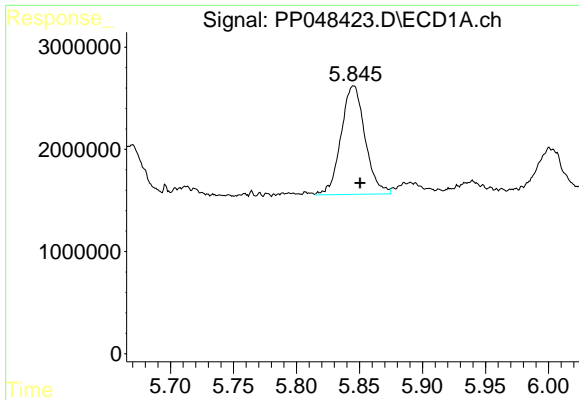
#6 AR-1016-4

R.T.: 5.522 min
 Delta R.T.: -0.004 min
 Response: 1092288
 Conc: 17.72 ng/ml



#6 AR-1016-4

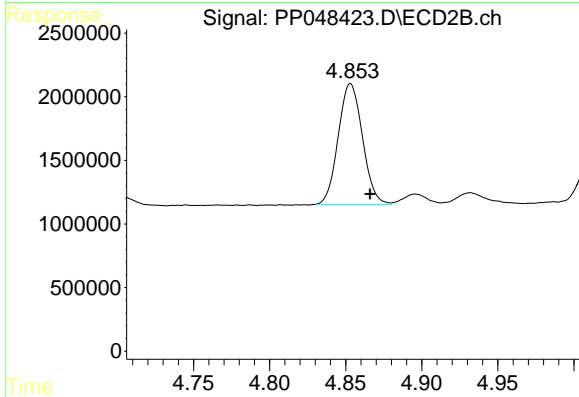
R.T.: 4.626 min
 Delta R.T.: -0.013 min
 Response: 19125791
 Conc: 501.98 ng/ml



#7 AR-1016-5

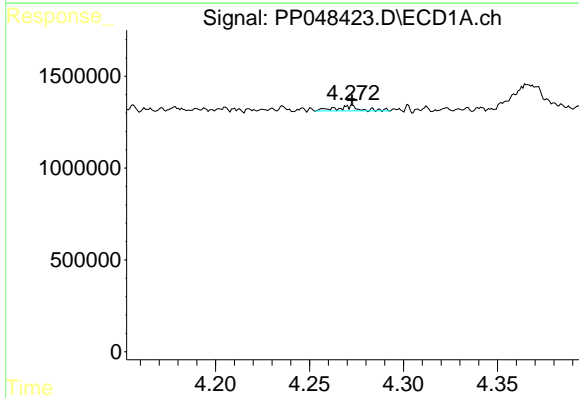
R.T.: 5.845 min
 Delta R.T.: -0.006 min
 Response: 14109728
 Conc: 250.49 ng/ml

Instrument :
 ECD_R
 ClientSampleId :



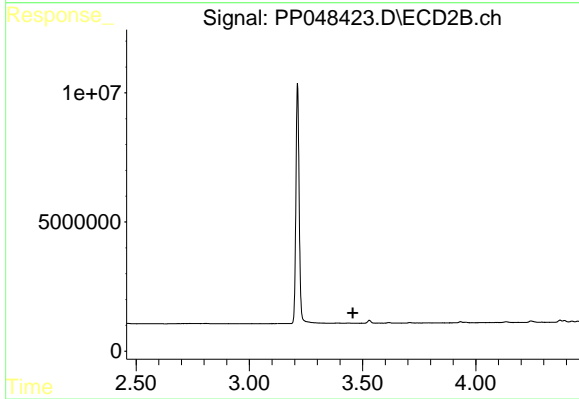
#7 AR-1016-5

R.T.: 4.853 min
 Delta R.T.: -0.013 min
 Response: 10525197
 Conc: 220.44 ng/ml



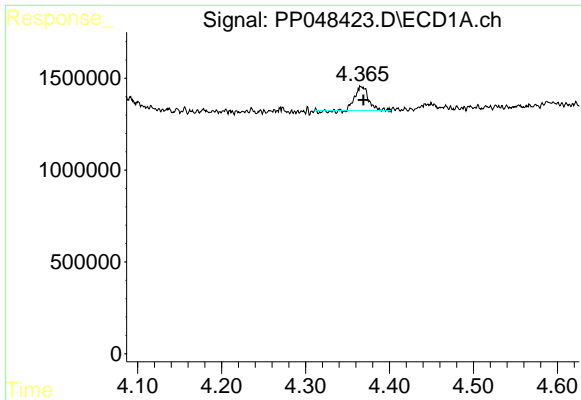
#8 AR-1221-1

R.T.: 4.272 min
 Delta R.T.: 0.000 min
 Response: 243170
 Conc: 9.20 ng/ml



#8 AR-1221-1

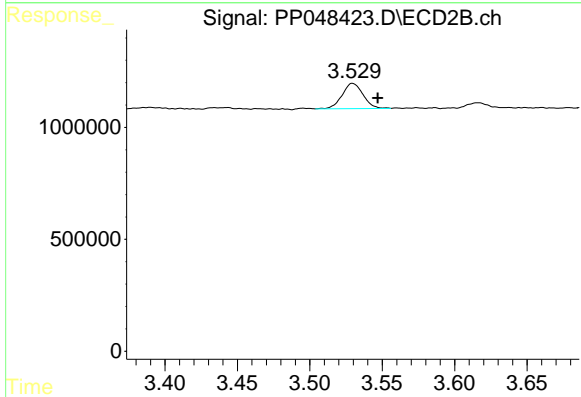
R.T.: 0.000 min
 Exp R.T. : 3.457 min
 Response: 0
 Conc: N.D.



#9 AR-1221-2

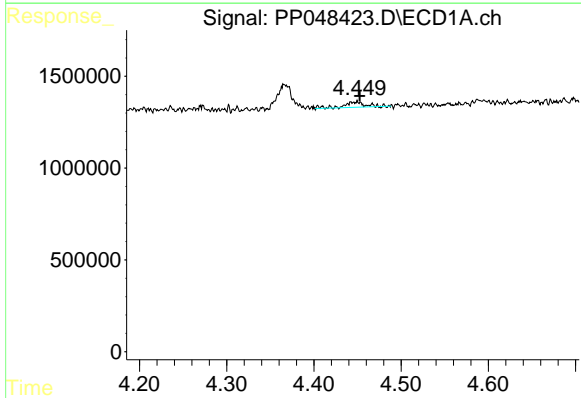
R.T.: 4.367 min
 Delta R.T.: -0.002 min
 Response: 1449766
 Conc: 70.79 ng/ml

Instrument :
 ECD_R
 ClientSampleId :



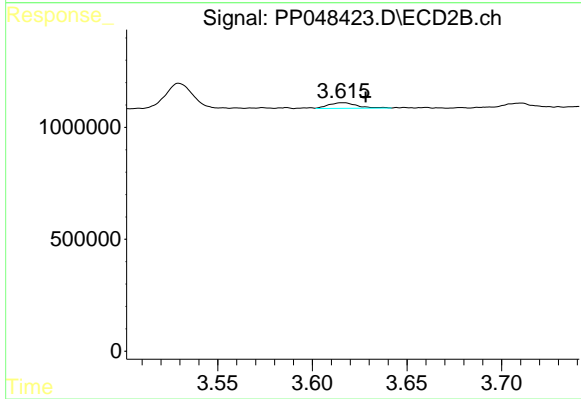
#9 AR-1221-2

R.T.: 3.529 min
 Delta R.T.: -0.018 min
 Response: 1130571
 Conc: 73.61 ng/ml



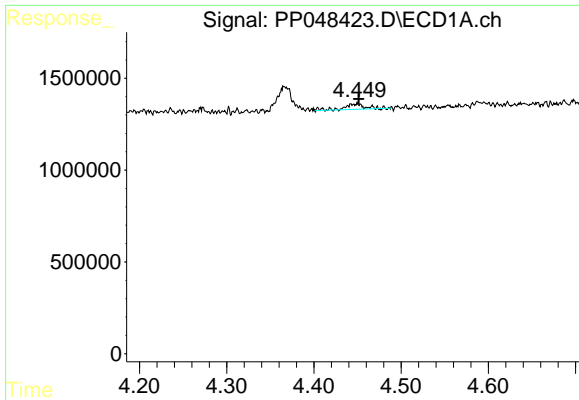
#10 AR-1221-3

R.T.: 4.449 min
 Delta R.T.: -0.003 min
 Response: 466036
 Conc: 7.44 ng/ml



#10 AR-1221-3

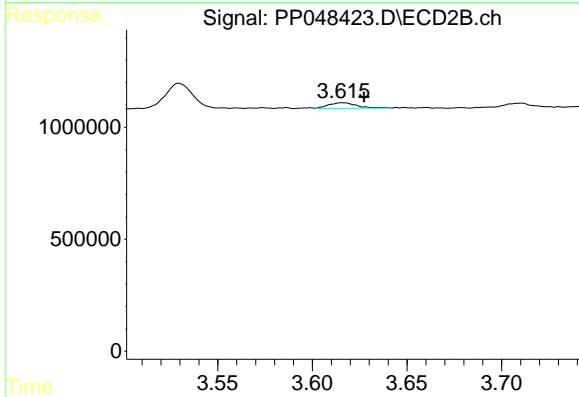
R.T.: 3.616 min
 Delta R.T.: -0.013 min
 Response: 258479
 Conc: 5.21 ng/ml



#11 AR-1232-1

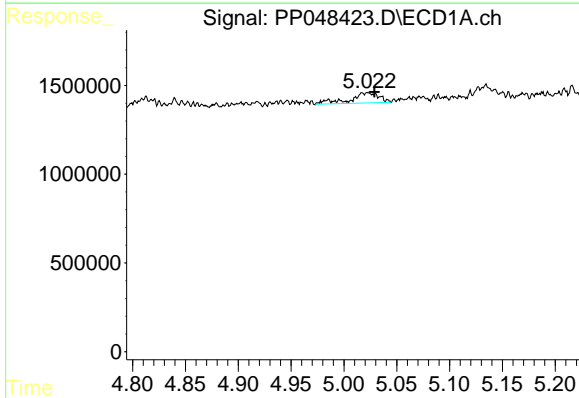
R.T.: 4.449 min
 Delta R.T.: -0.003 min
 Response: 466036
 Conc: 8.97 ng/ml

Instrument :
 ECD_R
 ClientSampleId :



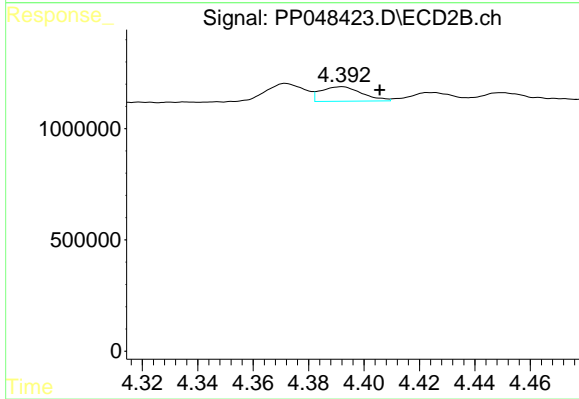
#11 AR-1232-1

R.T.: 3.616 min
 Delta R.T.: -0.012 min
 Response: 258479
 Conc: 5.98 ng/ml



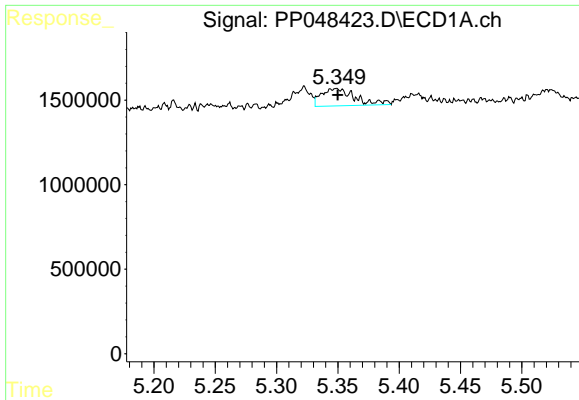
#12 AR-1232-2

R.T.: 5.021 min
 Delta R.T.: -0.007 min
 Response: 1092991
 Conc: 45.53 ng/ml



#12 AR-1232-2

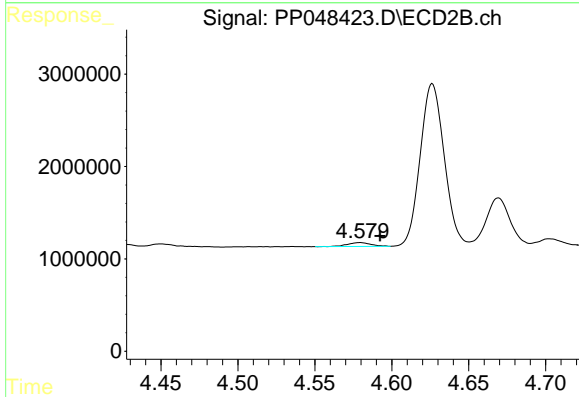
R.T.: 4.392 min
 Delta R.T.: -0.013 min
 Response: 670634
 Conc: 16.64 ng/ml



#13 AR-1232-3

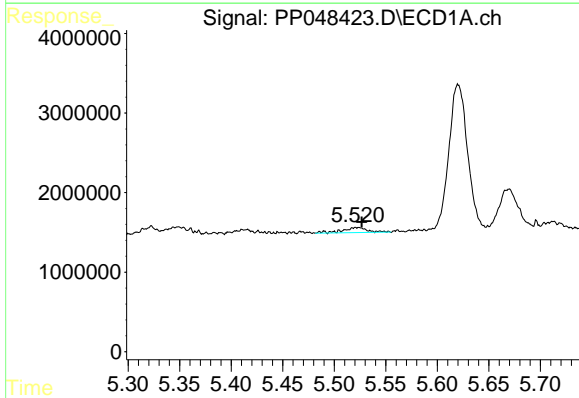
R.T.: 5.348 min
 Delta R.T.: -0.002 min
 Response: 1942971
 Conc: 39.16 ng/ml

Instrument :
 ECD_R
 ClientSampleId :



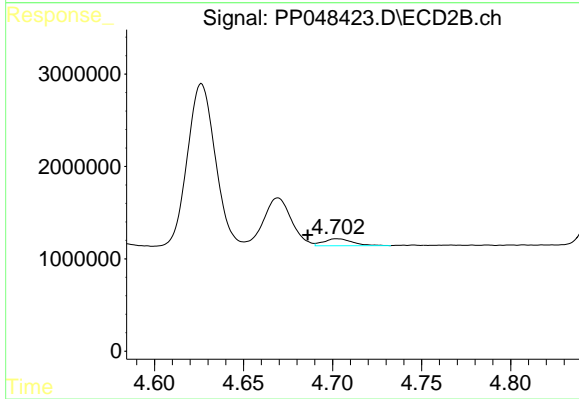
#13 AR-1232-3

R.T.: 4.580 min
 Delta R.T.: -0.013 min
 Response: 441396
 Conc: 21.39 ng/ml



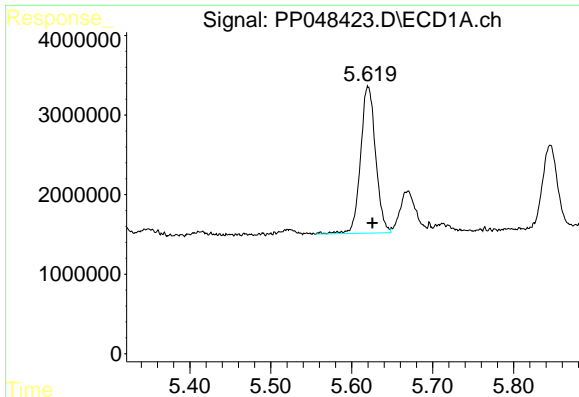
#14 AR-1232-4

R.T.: 5.522 min
 Delta R.T.: -0.005 min
 Response: 1092288
 Conc: 45.69 ng/ml



#14 AR-1232-4

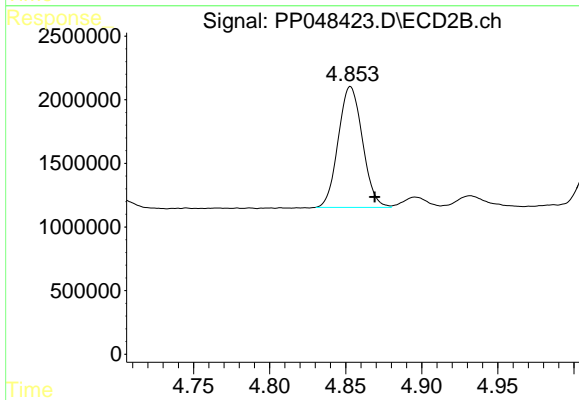
R.T.: 4.702 min
 Delta R.T.: 0.016 min
 Response: 857574
 Conc: 49.42 ng/ml



#15 AR-1232-5

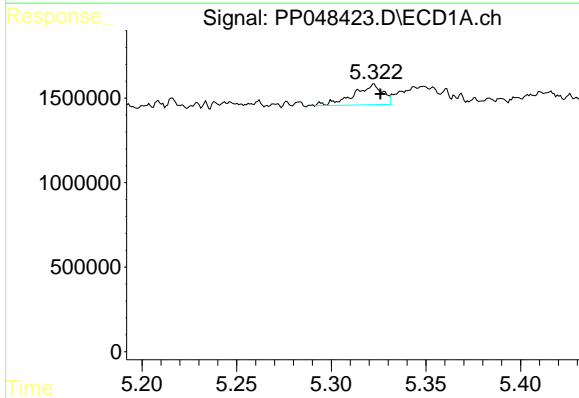
R.T.: 5.620 min
 Delta R.T.: -0.005 min
 Response: 23892954
 Conc: 1462.48 ng/ml

Instrument :
 ECD_R
 ClientSampleId :



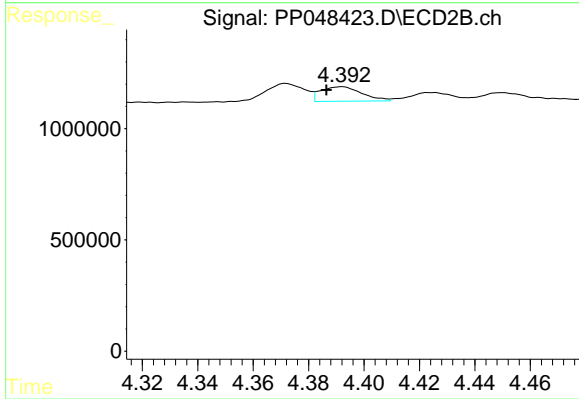
#15 AR-1232-5

R.T.: 4.853 min
 Delta R.T.: -0.016 min
 Response: 10525197
 Conc: 537.34 ng/ml



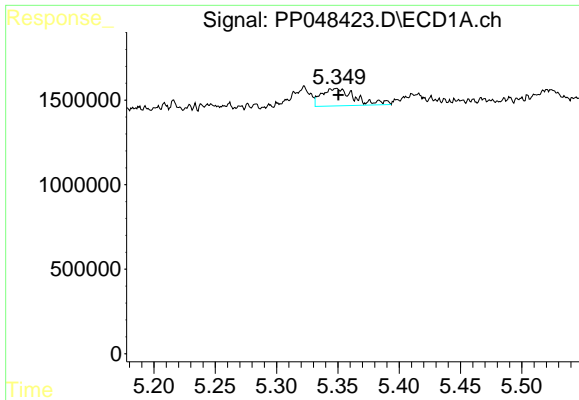
#16 AR-1242-1

R.T.: 5.322 min
 Delta R.T.: -0.004 min
 Response: 1288801
 Conc: 23.05 ng/ml



#16 AR-1242-1

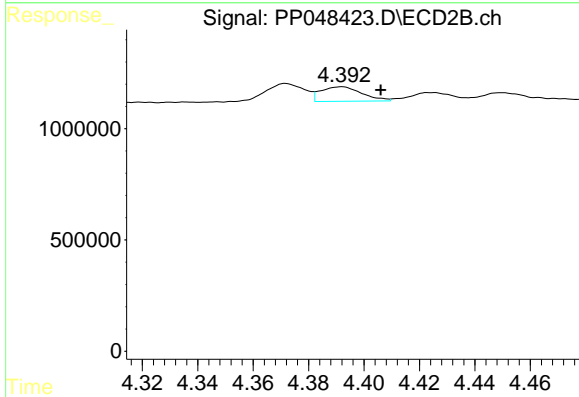
R.T.: 4.392 min
 Delta R.T.: 0.006 min
 Response: 670634
 Conc: 14.06 ng/ml



#17 AR-1242-2

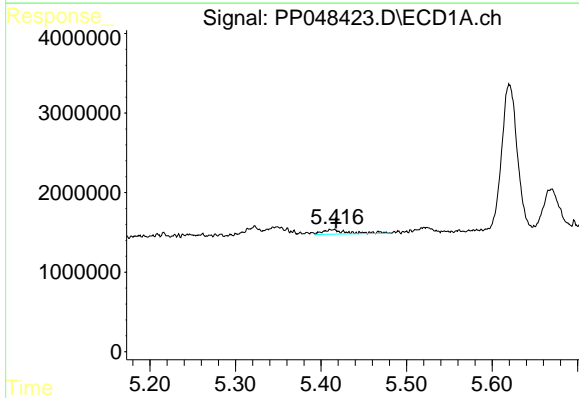
R.T.: 5.348 min
 Delta R.T.: -0.002 min
 Response: 1942971
 Conc: 23.62 ng/ml

Instrument :
 ECD_R
 ClientSampleId :



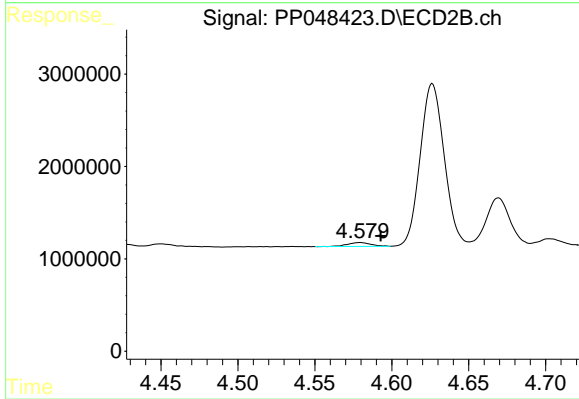
#17 AR-1242-2

R.T.: 4.392 min
 Delta R.T.: -0.014 min
 Response: 670634
 Conc: 10.09 ng/ml



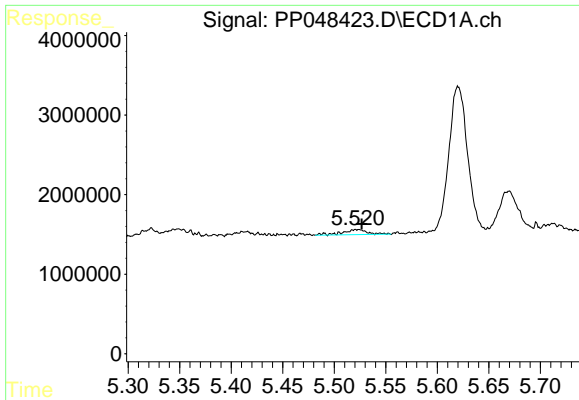
#18 AR-1242-3

R.T.: 5.414 min
 Delta R.T.: -0.004 min
 Response: 1176800
 Conc: 23.97 ng/ml



#18 AR-1242-3

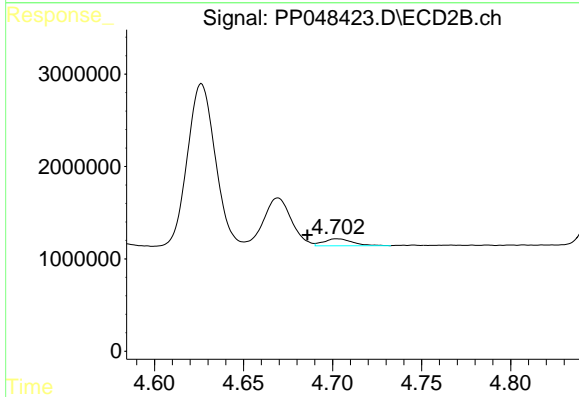
R.T.: 4.580 min
 Delta R.T.: -0.013 min
 Response: 441396
 Conc: 12.72 ng/ml



#19 AR-1242-4

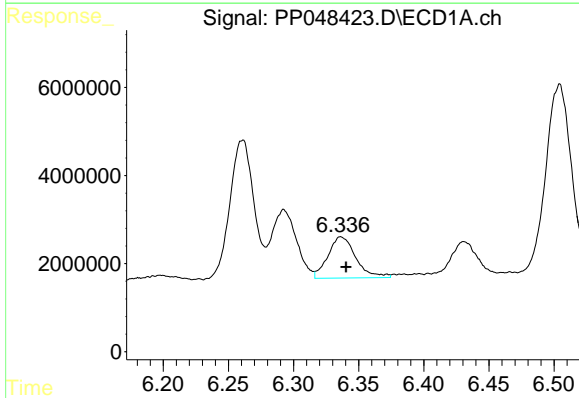
R.T.: 5.522 min
 Delta R.T.: -0.004 min
 Response: 1092288
 Conc: 27.60 ng/ml

Instrument :
 ECD_R
 ClientSampleId :



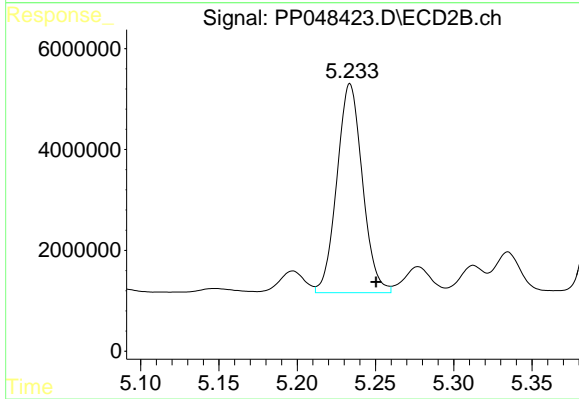
#19 AR-1242-4

R.T.: 4.702 min
 Delta R.T.: 0.016 min
 Response: 857574
 Conc: 26.70 ng/ml



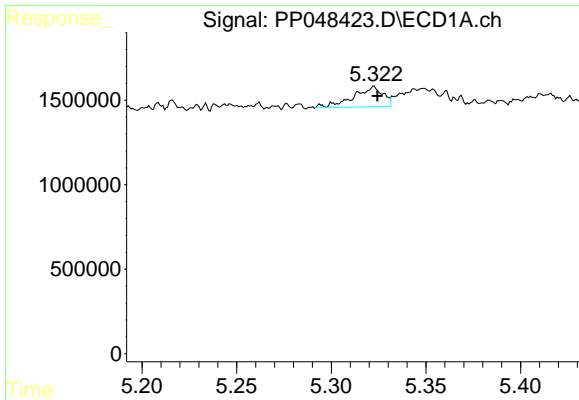
#20 AR-1242-5

R.T.: 6.337 min
 Delta R.T.: -0.003 min
 Response: 13929040
 Conc: 327.06 ng/ml



#20 AR-1242-5

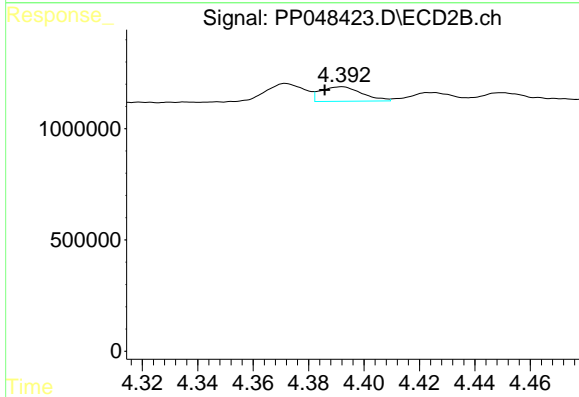
R.T.: 5.234 min
 Delta R.T.: -0.017 min
 Response: 47094721
 Conc: 1127.69 ng/ml



#21 AR-1248-1

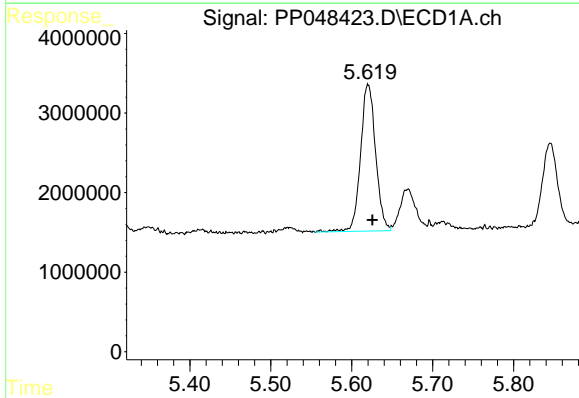
R.T.: 5.322 min
 Delta R.T.: -0.002 min
 Response: 1288801
 Conc: 29.88 ng/ml

Instrument :
 ECD_R
 ClientSampleId :



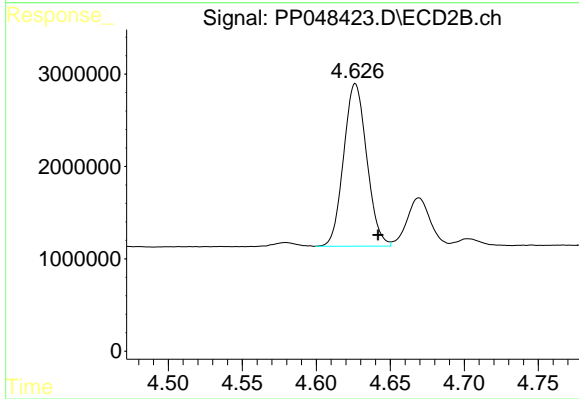
#21 AR-1248-1

R.T.: 4.392 min
 Delta R.T.: 0.006 min
 Response: 670634
 Conc: 18.32 ng/ml



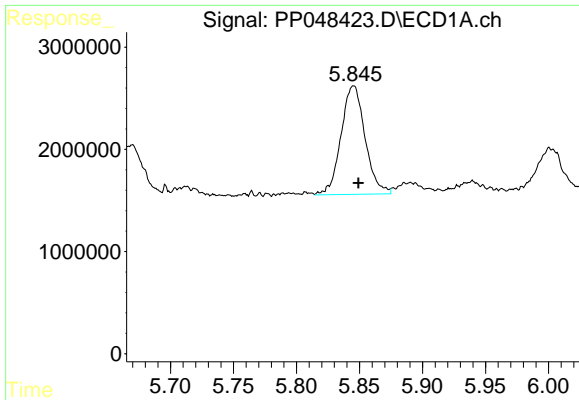
#22 AR-1248-2

R.T.: 5.620 min
 Delta R.T.: -0.005 min
 Response: 23892954
 Conc: 417.79 ng/ml



#22 AR-1248-2

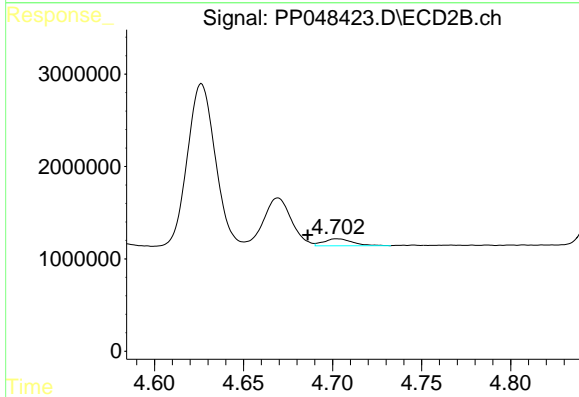
R.T.: 4.626 min
 Delta R.T.: -0.015 min
 Response: 19125791
 Conc: 401.60 ng/ml



#23 AR-1248-3

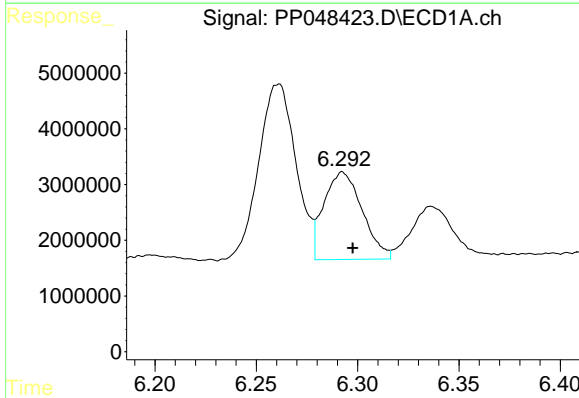
R.T.: 5.845 min
 Delta R.T.: -0.004 min
 Response: 14109728
 Conc: 208.46 ng/ml

Instrument :
 ECD_R
 ClientSampleId :



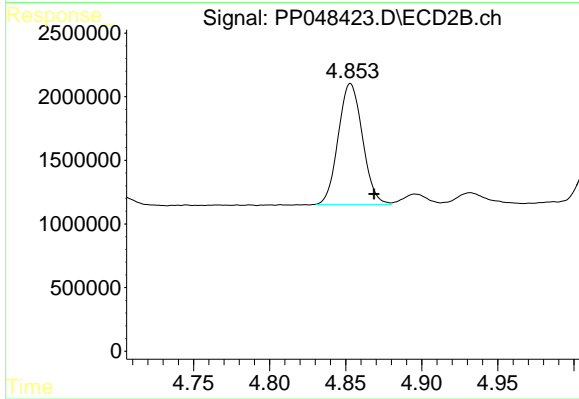
#23 AR-1248-3

R.T.: 4.702 min
 Delta R.T.: 0.016 min
 Response: 857574
 Conc: 17.31 ng/ml



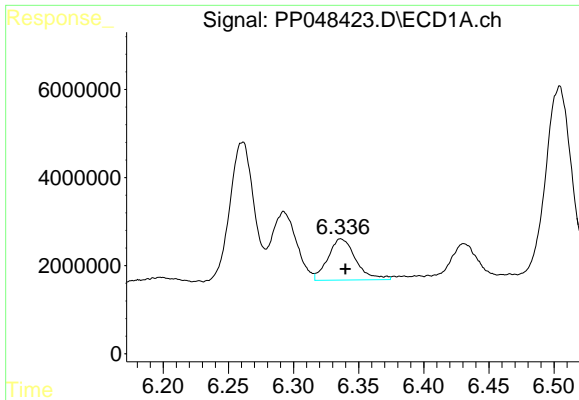
#24 AR-1248-4

R.T.: 6.293 min
 Delta R.T.: -0.005 min
 Response: 20692351
 Conc: 266.08 ng/ml



#24 AR-1248-4

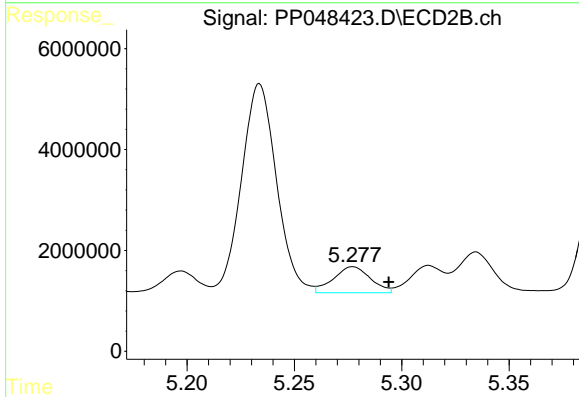
R.T.: 4.853 min
 Delta R.T.: -0.016 min
 Response: 10525197
 Conc: 180.66 ng/ml



#25 AR-1248-5

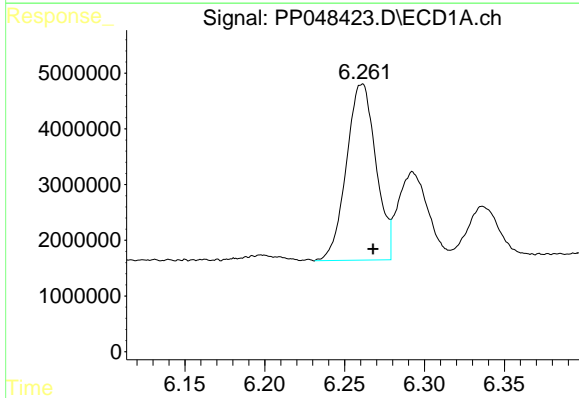
R.T.: 6.337 min
 Delta R.T.: -0.003 min
 Response: 13929040
 Conc: 183.12 ng/ml

Instrument :
 ECD_R
 ClientSampleId :



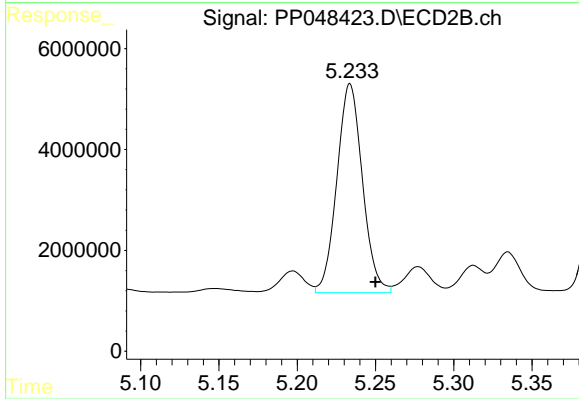
#25 AR-1248-5

R.T.: 5.277 min
 Delta R.T.: -0.017 min
 Response: 6204666
 Conc: 102.87 ng/ml



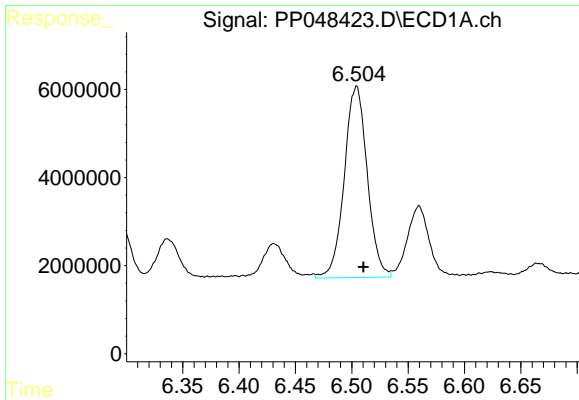
#26 AR-1254-1

R.T.: 6.261 min
 Delta R.T.: -0.007 min
 Response: 40535929
 Conc: 558.38 ng/ml



#26 AR-1254-1

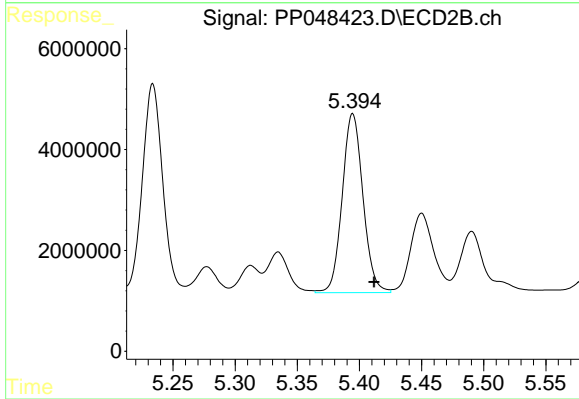
R.T.: 5.234 min
 Delta R.T.: -0.016 min
 Response: 47094721
 Conc: 537.22 ng/ml



#27 AR-1254-2

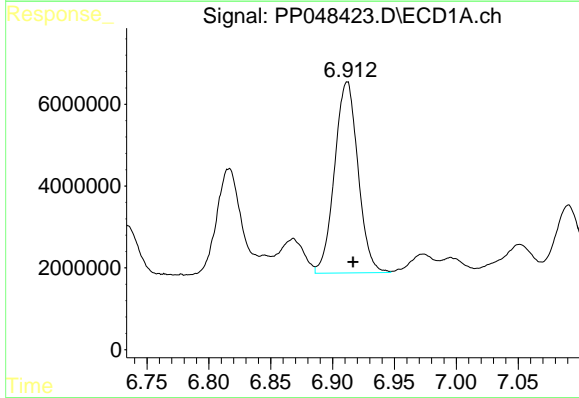
R.T.: 6.504 min
Delta R.T.: -0.006 min
Response: 61678873
Conc: 518.36 ng/ml

Instrument :
ECD_R
ClientSampleId :



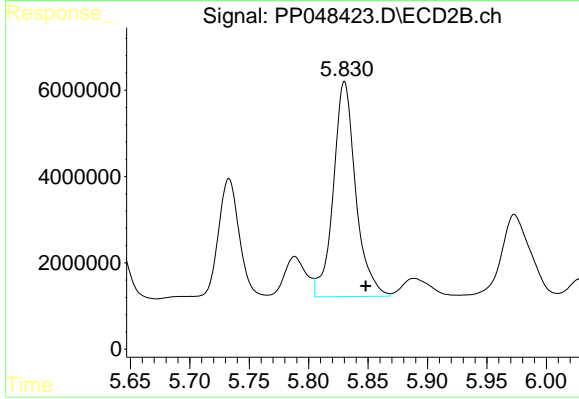
#27 AR-1254-2

R.T.: 5.395 min
Delta R.T.: -0.017 min
Response: 41291847
Conc: 549.56 ng/ml



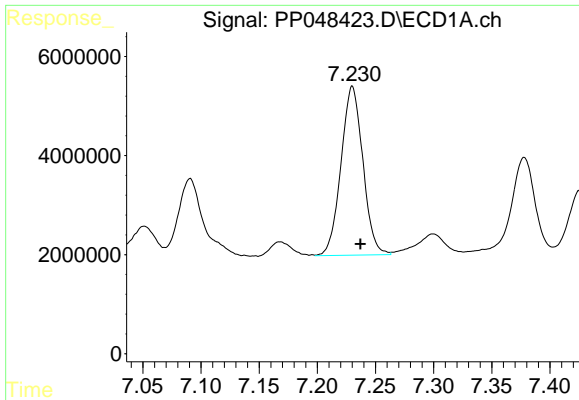
#28 AR-1254-3

R.T.: 6.911 min
Delta R.T.: -0.005 min
Response: 61679660
Conc: 519.22 ng/ml



#28 AR-1254-3

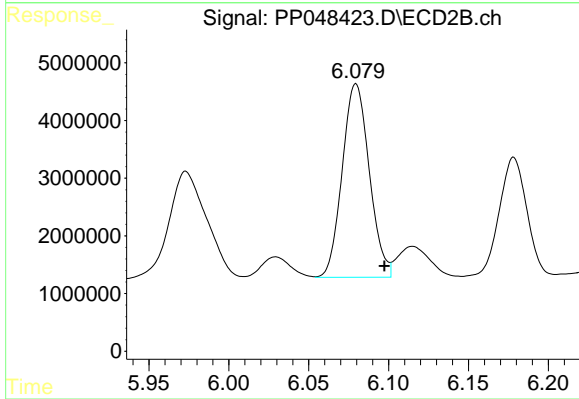
R.T.: 5.830 min
Delta R.T.: -0.018 min
Response: 65251641
Conc: 531.82 ng/ml



#29 AR-1254-4

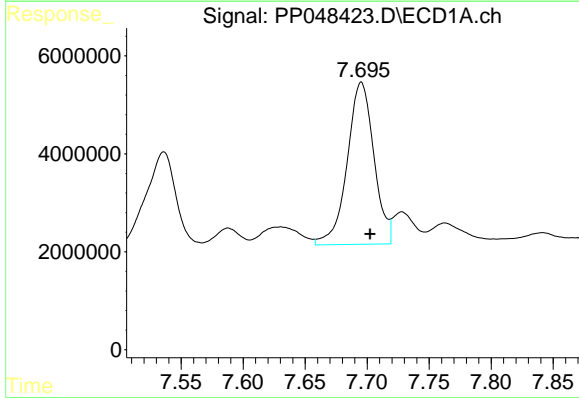
R.T.: 7.230 min
Delta R.T.: -0.007 min
Response: 44683899
Conc: 495.39 ng/ml

Instrument :
ECD_R
ClientSampleId :



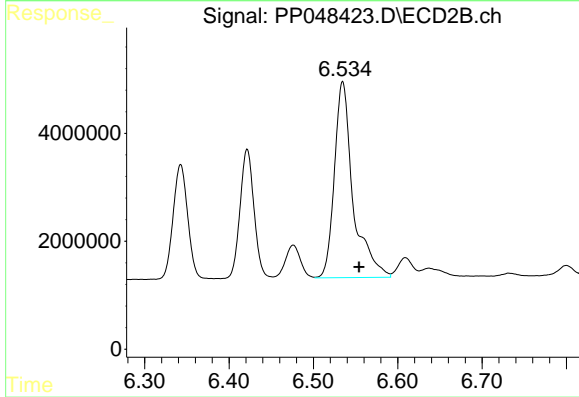
#29 AR-1254-4

R.T.: 6.080 min
Delta R.T.: -0.018 min
Response: 39604298
Conc: 527.44 ng/ml



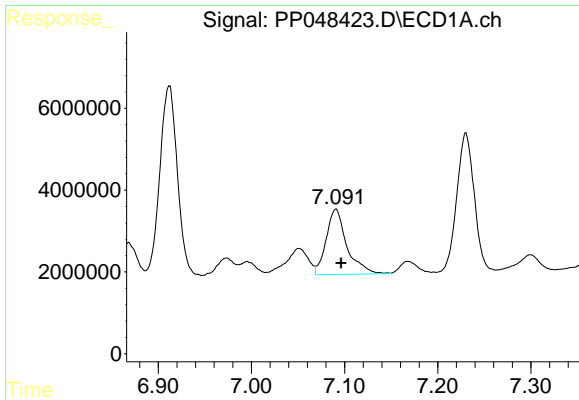
#30 AR-1254-5

R.T.: 7.695 min
Delta R.T.: -0.007 min
Response: 49663516
Conc: 535.95 ng/ml



#30 AR-1254-5

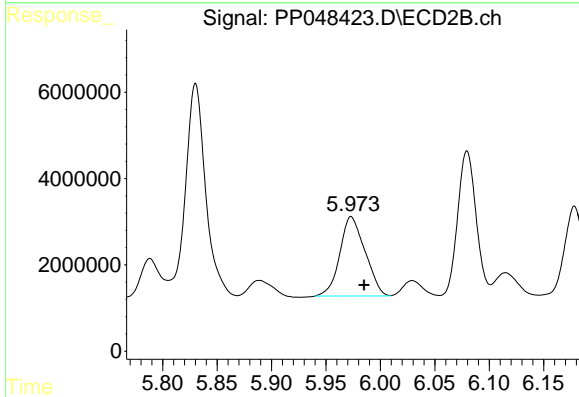
R.T.: 6.535 min
Delta R.T.: -0.019 min
Response: 55986200
Conc: 553.02 ng/ml



#31 AR-1260-1

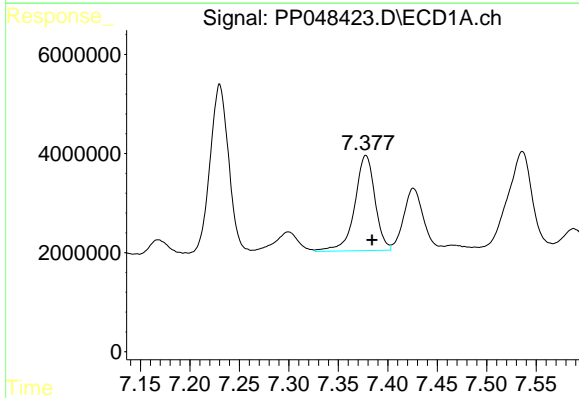
R.T.: 7.091 min
 Delta R.T.: -0.006 min
 Response: 24713571
 Conc: 264.78 ng/ml

Instrument :
 ECD_R
 ClientSampleId :



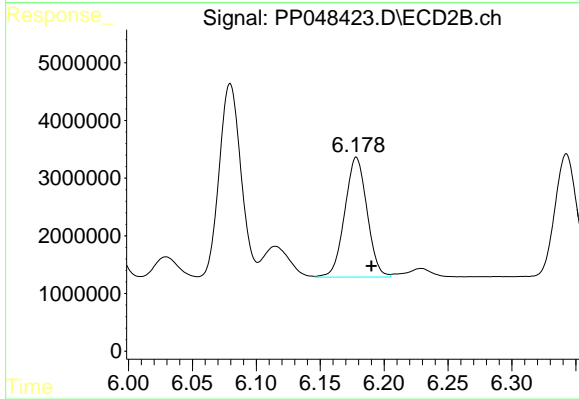
#31 AR-1260-1

R.T.: 5.973 min
 Delta R.T.: -0.012 min
 Response: 29735843
 Conc: 347.37 ng/ml



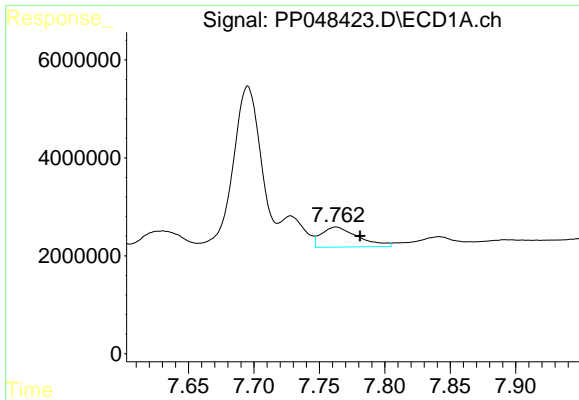
#32 AR-1260-2

R.T.: 7.378 min
 Delta R.T.: -0.006 min
 Response: 27354350
 Conc: 244.70 ng/ml



#32 AR-1260-2

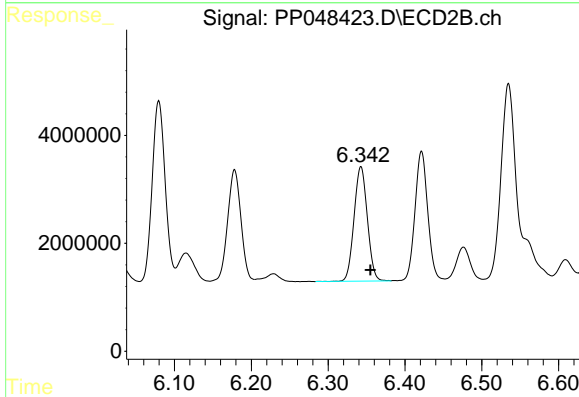
R.T.: 6.178 min
 Delta R.T.: -0.012 min
 Response: 25214264
 Conc: 244.61 ng/ml



#33 AR-1260-3

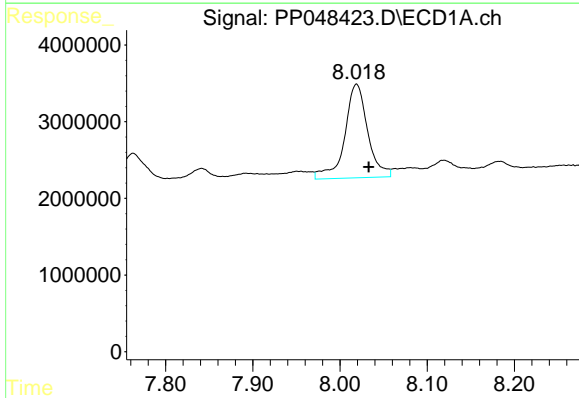
R.T.: 7.763 min
 Delta R.T.: -0.018 min
 Response: 7940915
 Conc: 92.71 ng/ml

Instrument :
 ECD_R
 ClientSampleId :



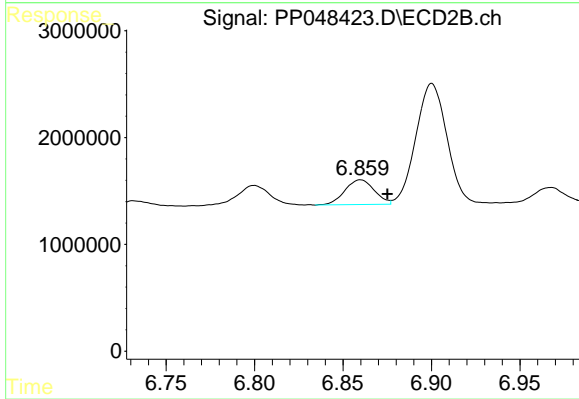
#33 AR-1260-3

R.T.: 6.343 min
 Delta R.T.: -0.012 min
 Response: 25511309
 Conc: 257.63 ng/ml



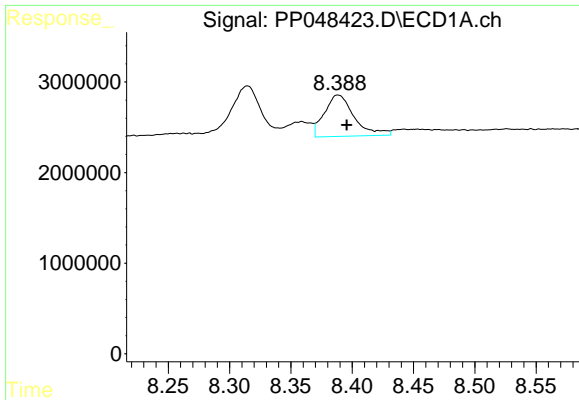
#34 AR-1260-4

R.T.: 8.019 min
 Delta R.T.: -0.014 min
 Response: 22372349
 Conc: 215.62 ng/ml



#34 AR-1260-4

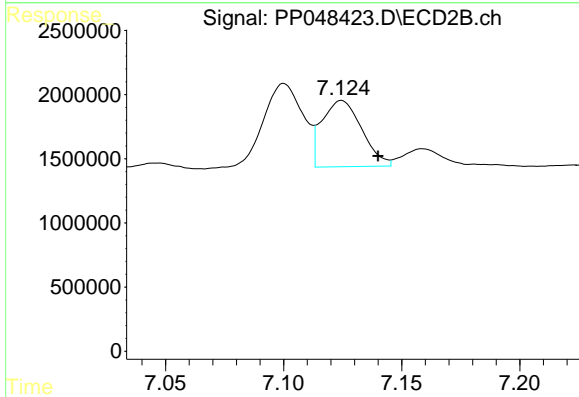
R.T.: 6.860 min
 Delta R.T.: -0.015 min
 Response: 2697200
 Conc: 32.40 ng/ml



#35 AR-1260-5

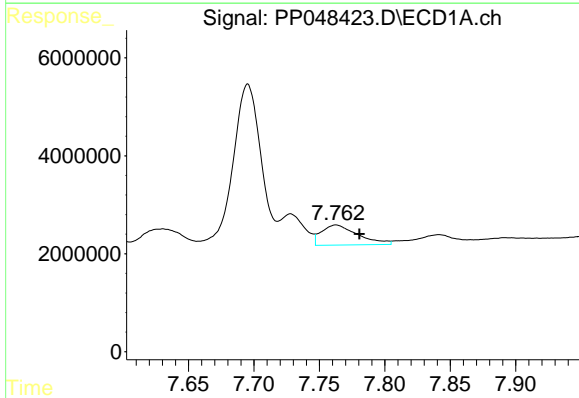
R.T.: 8.389 min
 Delta R.T.: -0.007 min
 Response: 7721407
 Conc: 37.42 ng/ml

Instrument :
 ECD_R
 ClientSampleId :



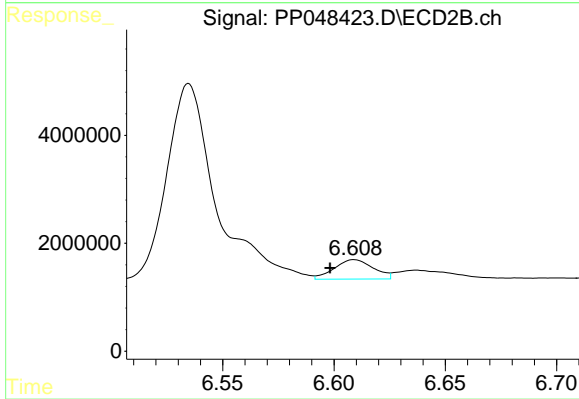
#35 AR-1260-5

R.T.: 7.125 min
 Delta R.T.: -0.015 min
 Response: 6063847
 Conc: 30.56 ng/ml



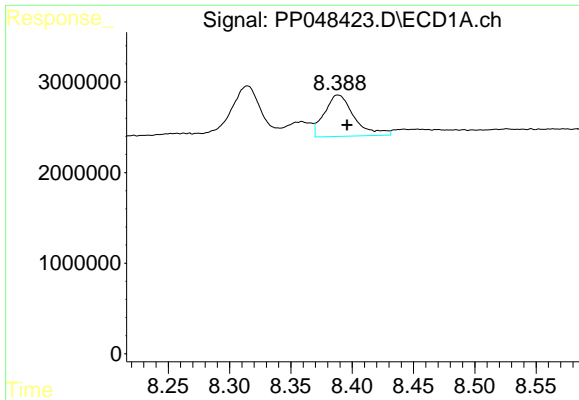
#36 AR-1262-1

R.T.: 7.763 min
 Delta R.T.: -0.018 min
 Response: 7940915
 Conc: 69.63 ng/ml



#36 AR-1262-1

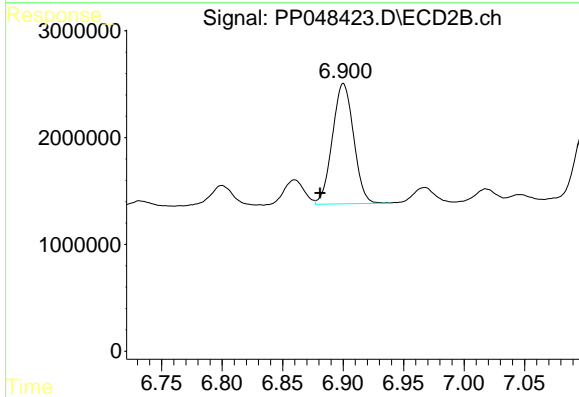
R.T.: 6.609 min
 Delta R.T.: 0.011 min
 Response: 4381897
 Conc: 40.56 ng/ml



#37 AR-1262-2

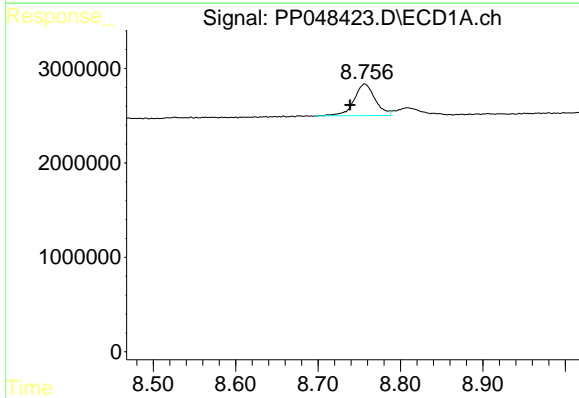
R.T.: 8.389 min
 Delta R.T.: -0.007 min
 Response: 7721407
 Conc: 36.23 ng/ml

Instrument :
 ECD_R
 ClientSampleId :



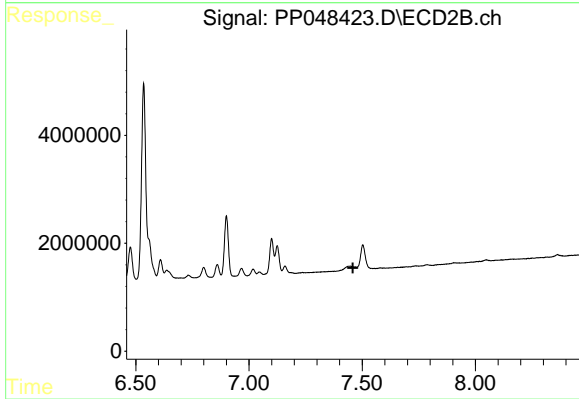
#37 AR-1262-2

R.T.: 6.900 min
 Delta R.T.: 0.019 min
 Response: 13759118
 Conc: 139.03 ng/ml



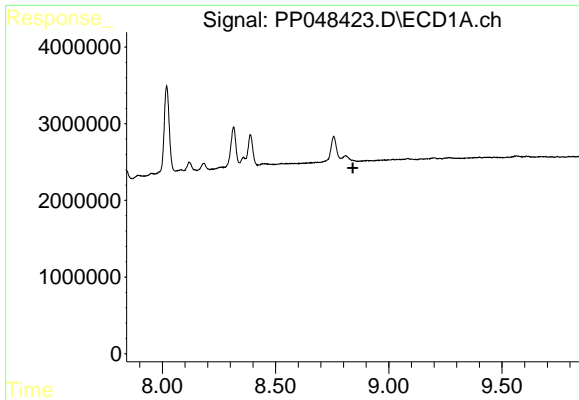
#38 AR-1262-3

R.T.: 8.757 min
 Delta R.T.: 0.018 min
 Response: 5938629
 Conc: 63.72 ng/ml



#38 AR-1262-3

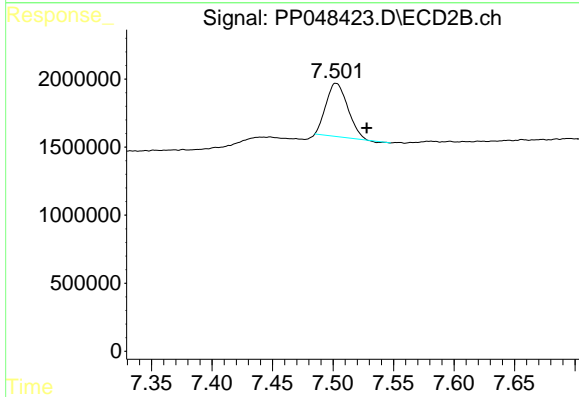
R.T.: 7.448 min
 Delta R.T.: -0.011 min
 Response: -769360
 Conc: N.D.



#39 AR-1262-4

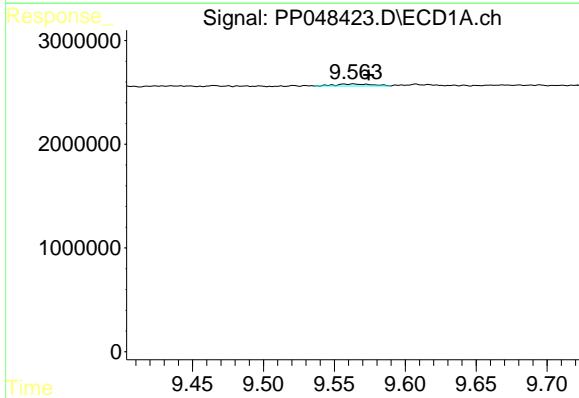
R.T.: 0.000 min
 Exp R.T.: 8.841 min
 Response: 0
 Conc: N.D.

Instrument :
 ECD_R
 ClientSampleId :



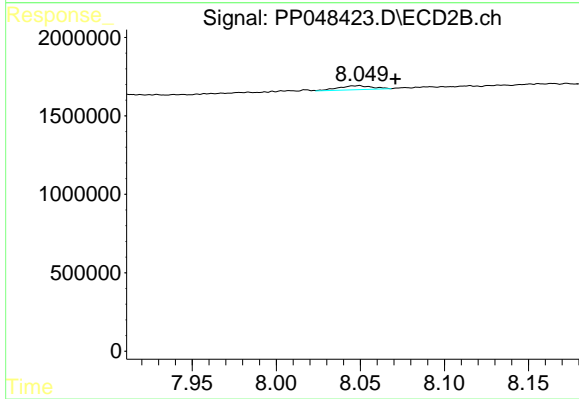
#39 AR-1262-4

R.T.: 7.503 min
 Delta R.T.: -0.025 min
 Response: 4882080
 Conc: 33.52 ng/ml



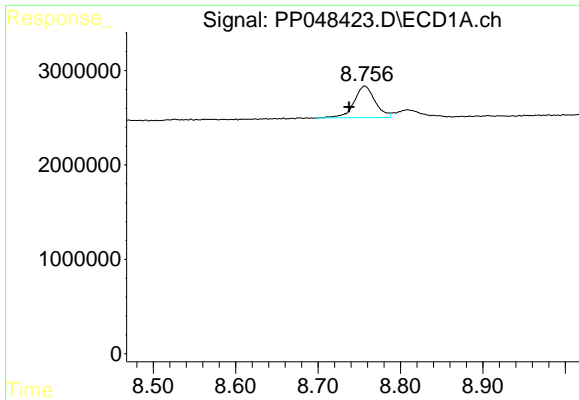
#40 AR-1262-5

R.T.: 9.563 min
 Delta R.T.: -0.012 min
 Response: 339174
 Conc: 4.29 ng/ml



#40 AR-1262-5

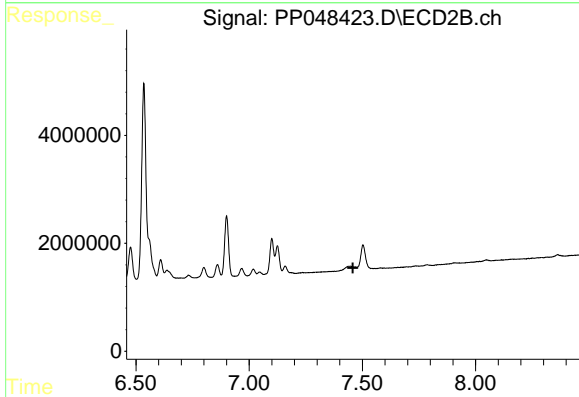
R.T.: 8.049 min
 Delta R.T.: -0.022 min
 Response: 360002
 Conc: 5.33 ng/ml



#41 AR-1268-1

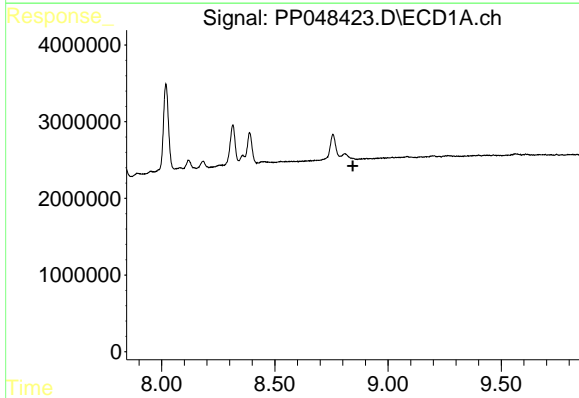
R.T.: 8.757 min
 Delta R.T.: 0.019 min
 Response: 5938629
 Conc: 22.45 ng/ml

Instrument :
 ECD_R
 ClientSampleId :



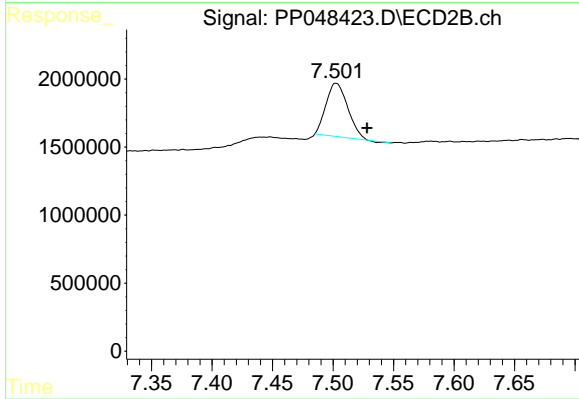
#41 AR-1268-1

R.T.: 7.448 min
 Delta R.T.: -0.010 min
 Response: -769360
 Conc: N.D.



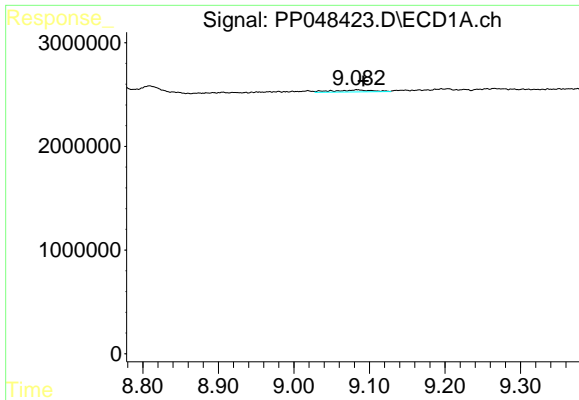
#42 AR-1268-2

R.T.: 0.000 min
 Exp R.T. : 8.845 min
 Response: 0
 Conc: N.D.



#42 AR-1268-2

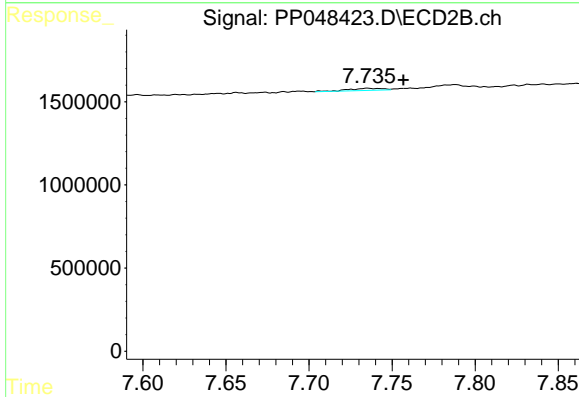
R.T.: 7.503 min
 Delta R.T.: -0.026 min
 Response: 4882080
 Conc: 22.56 ng/ml



#43 AR-1268-3

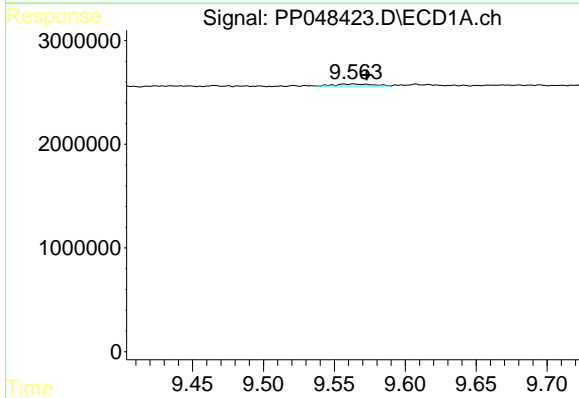
R.T.: 9.084 min
 Delta R.T.: -0.008 min
 Response: 729960
 Conc: 3.55 ng/ml

Instrument :
 ECD_R
 ClientSampleId :



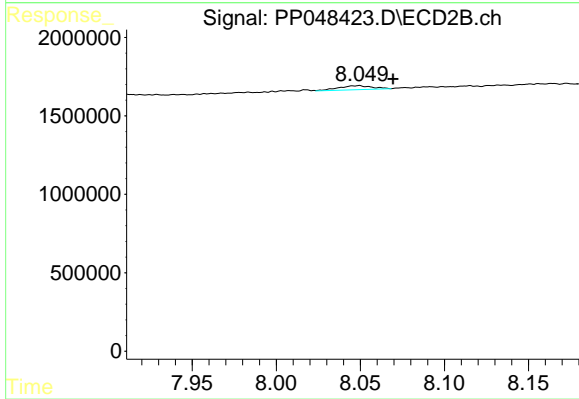
#43 AR-1268-3

R.T.: 7.735 min
 Delta R.T.: -0.021 min
 Response: 173834
 Conc: 0.94 ng/ml



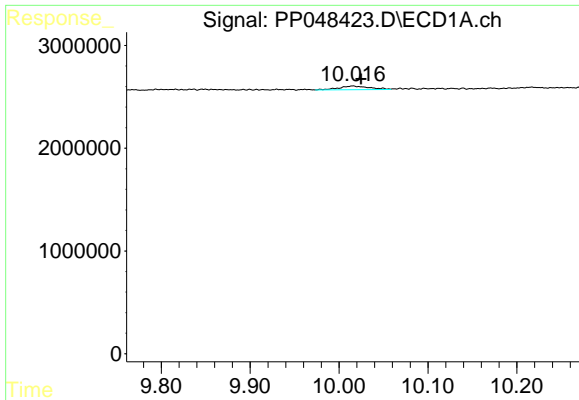
#44 AR-1268-4

R.T.: 9.563 min
 Delta R.T.: -0.010 min
 Response: 339174
 Conc: 3.78 ng/ml



#44 AR-1268-4

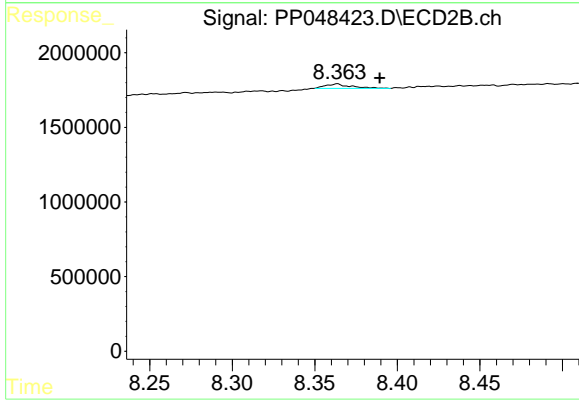
R.T.: 8.049 min
 Delta R.T.: -0.020 min
 Response: 360002
 Conc: 4.38 ng/ml



#45 AR-1268-5

R.T.: 10.015 min
Delta R.T.: -0.009 min
Response: 857782
Conc: 1.21 ng/ml

Instrument :
ECD_R
ClientSampleId :



#45 AR-1268-5

R.T.: 8.364 min
Delta R.T.: -0.026 min
Response: 322440
Conc: 0.53 ng/ml