

Data Path : Z:\pestpcbsrv\HPCHEM1\ECD\_R\Data\PR060722\  
 Data File : PR054706.D  
 Signal(s) : Signal #1: ECD1A.ch Signal #2: ECD2B.ch  
 Acq On : 07 Jun 2022 11:17  
 Operator : AJ\MA  
 Sample : N3184-06DL 10X  
 Misc :  
 ALS Vial : 11 Sample Multiplier: 1

**Instrument :**  
 ECD\_R  
**ClientSampleId :**  
 ESB004N7W2(0-0.5)DL

Integration File signal 1: autoint1.e  
 Integration File signal 2: autoint2.e  
 Quant Time: Jun 07 12:30:43 2022  
 Quant Method : Z:\pestpcbsrv\HPCHEM1\ECD\_R\Method\PR053122.M  
 Quant Title : GC EXTRACTABLES  
 QLast Update : Wed Jun 01 05:23:25 2022  
 Response via : Initial Calibration  
 Integrator: ChemStation

Volume Inj. : 2 µl  
 Signal #1 Phase : ZB-MR1 Signal #2 Phase: ZB-MR2  
 Signal #1 Info : 30Mx0.32mmx 0.50µ Signal #2 Info : 30M x 0.32mm x 0.25µm

Compound	RT#1	RT#2	Resp#1	Resp#2	ng/ml	ng/ml
-----						
System Monitoring Compounds						
1) SA Tetrachlo...	3.650	2.925	6643804	3041679	1.646	1.640
2) SA Decachlor...	9.537	8.150	2324834	2032971	1.423	1.215
Target Compounds						
31) L7 AR-1260-1	6.581	5.577	55766510	52753727	542.145	563.322
32) L7 AR-1260-2	6.863	5.780	72903757	69989258	612.202	606.521
33) L7 AR-1260-3	7.254	5.938	53753293	67295361	701.961	561.840
34) L7 AR-1260-4	7.497	6.442	68860660	64054841	763.830	778.148
35) L7 AR-1260-5	7.834	6.706	137.7E6	168.3E6	823.492	865.080
-----						

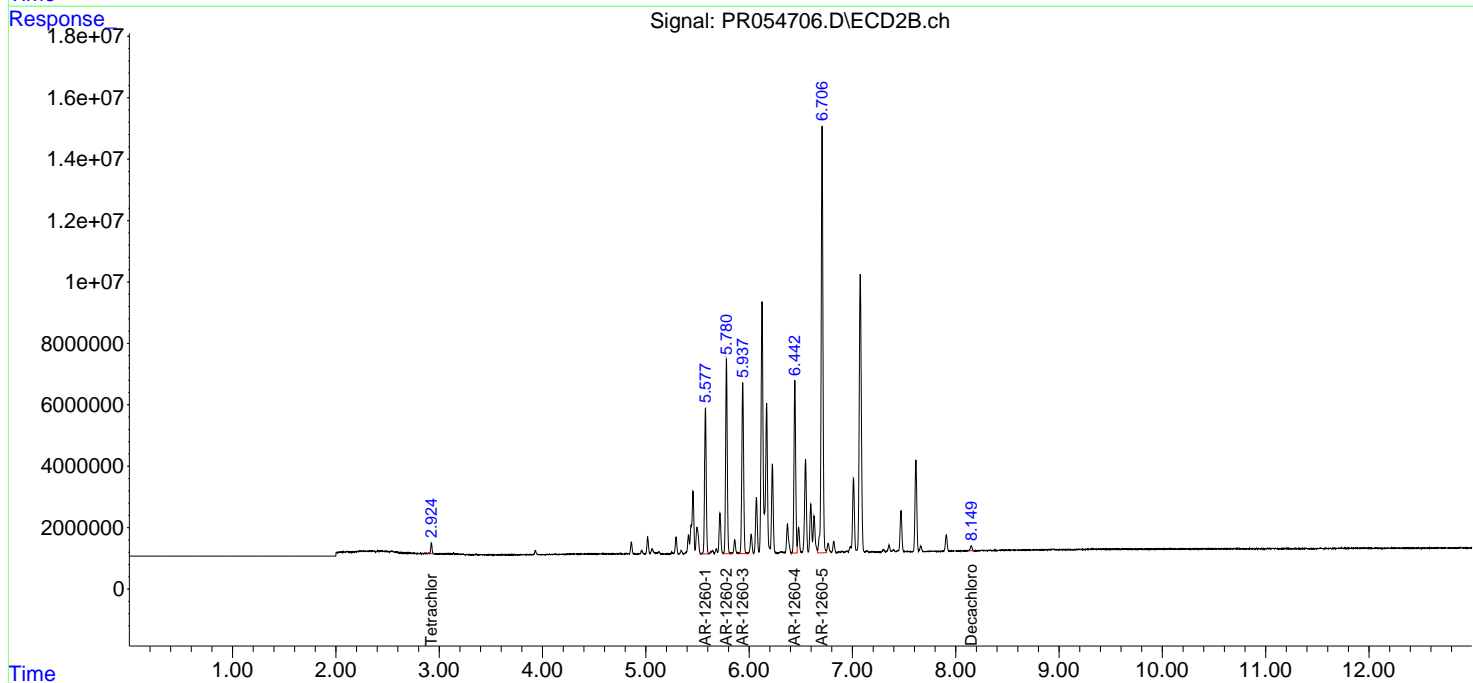
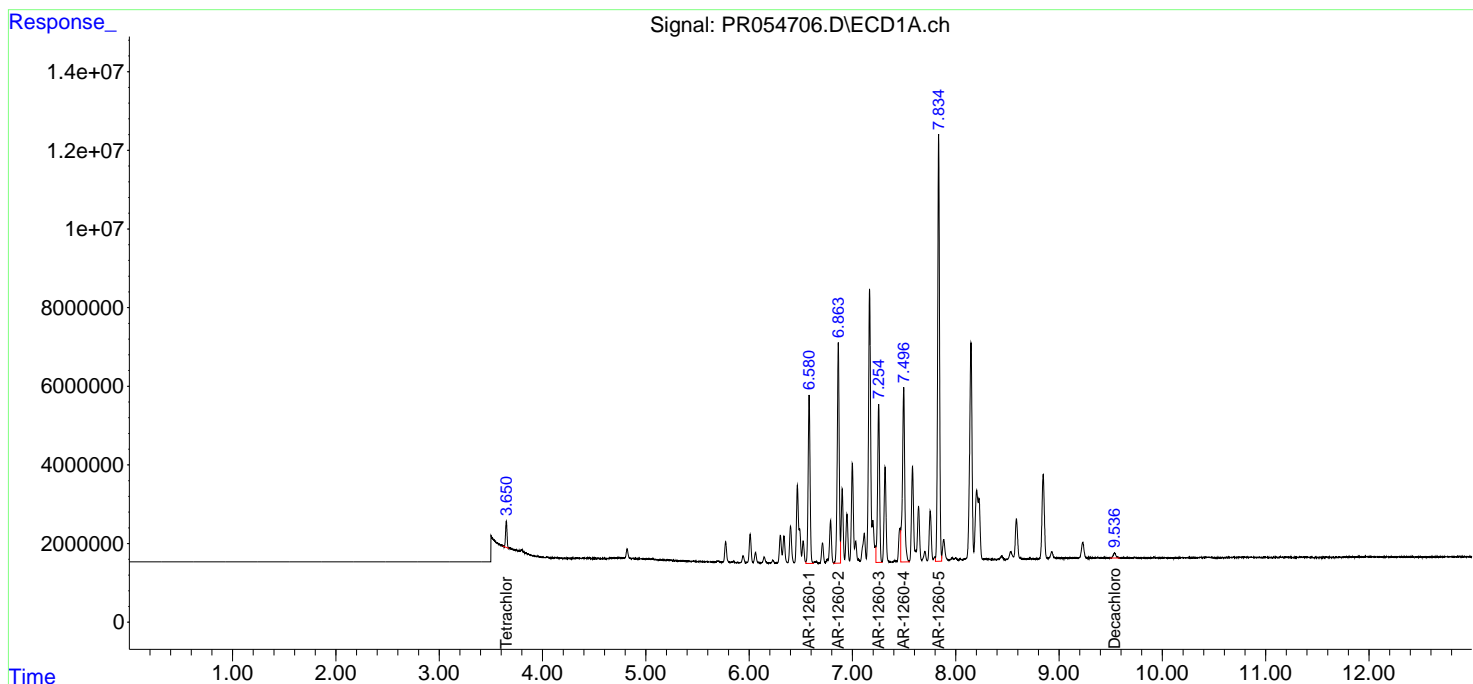
(f)=RT Delta > 1/2 Window (#)=Amounts differ by > 25% (m)=manual int.

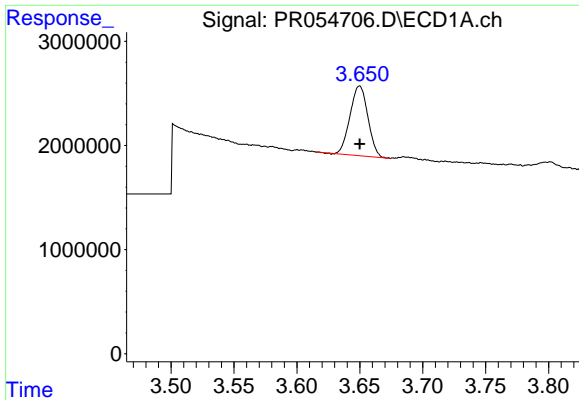
Data Path : Z:\pestpcbsrv\HPCHEM1\ECD\_R\Data\PR060722\  
 Data File : PR054706.D  
 Signal(s) : Signal #1: ECD1A.ch Signal #2: ECD2B.ch  
 Acq On : 07 Jun 2022 11:17  
 Operator : AJ\MA  
 Sample : N3184-06DL 10X  
 Misc :  
 ALS Vial : 11 Sample Multiplier: 1

**Instrument :**  
 ECD\_R  
**ClientSampleId :**  
 ESB004N7W2(0-0.5)DL

Integration File signal 1: autoint1.e  
 Integration File signal 2: autoint2.e  
 Quant Time: Jun 07 12:30:43 2022  
 Quant Method : Z:\pestpcbsrv\HPCHEM1\ECD\_R\Method\PR053122.M  
 Quant Title : GC EXTRACTABLES  
 QLast Update : Wed Jun 01 05:23:25 2022  
 Response via : Initial Calibration  
 Integrator: ChemStation

Volume Inj. : 2 µl  
 Signal #1 Phase : ZB-MR1 Signal #2 Phase: ZB-MR2  
 Signal #1 Info : 30Mx0.32mmx 0.50µ Signal #2 Info : 30M x 0.32mm x 0.25µm

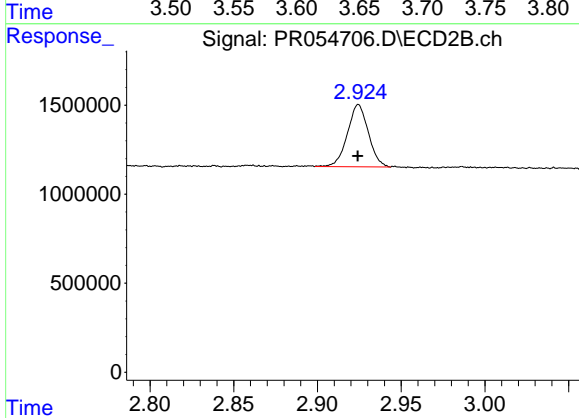




#1 Tetrachloro-m-xylene

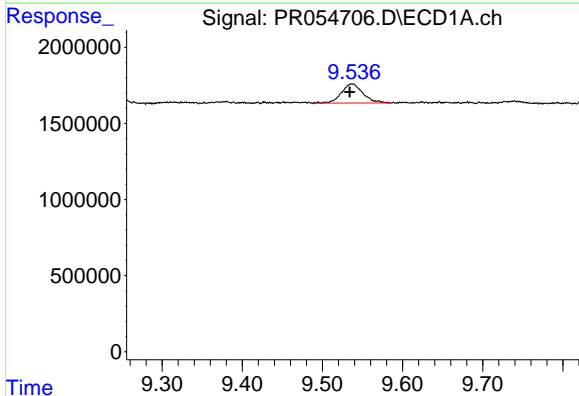
R.T.: 3.650 min  
 Delta R.T.: 0.000 min  
 Response: 6643804  
 Conc: 1.65 ng/ml

Instrument :  
 ECD\_R  
 ClientSampleId :  
 ESB004N7W2(0-0.5)DL



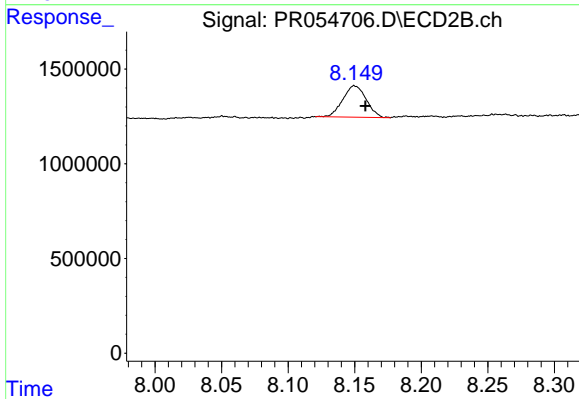
#1 Tetrachloro-m-xylene

R.T.: 2.925 min  
 Delta R.T.: 0.000 min  
 Response: 3041679  
 Conc: 1.64 ng/ml



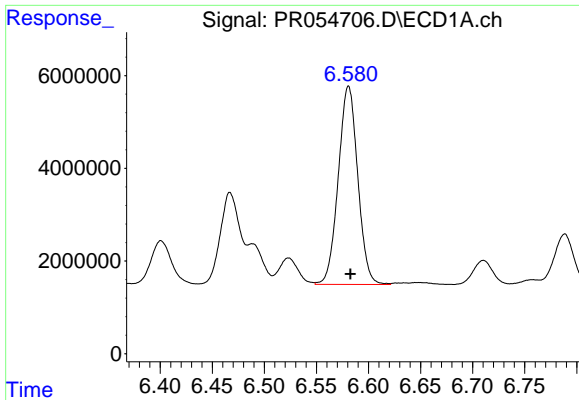
#2 Decachlorobiphenyl

R.T.: 9.537 min  
 Delta R.T.: 0.003 min  
 Response: 2324834  
 Conc: 1.42 ng/ml



#2 Decachlorobiphenyl

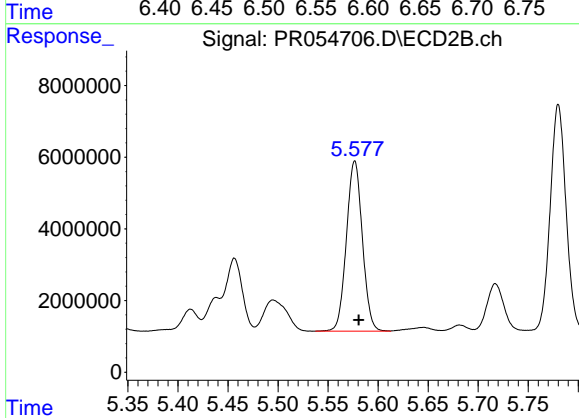
R.T.: 8.150 min  
 Delta R.T.: -0.008 min  
 Response: 2032971  
 Conc: 1.22 ng/ml



#31 AR-1260-1

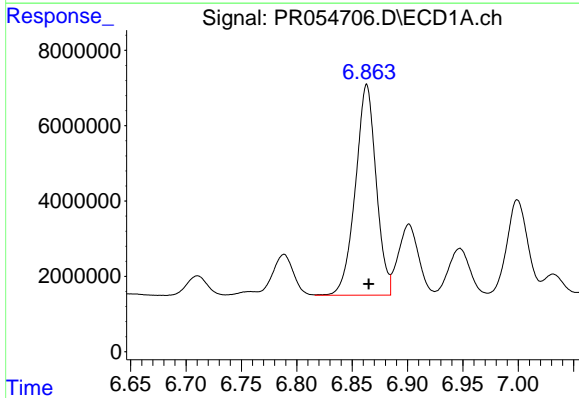
R.T.: 6.581 min  
Delta R.T.: -0.002 min  
Response: 55766510  
Conc: 542.14 ng/ml

Instrument :  
ECD\_R  
ClientSampleId :  
ESB004N7W2(0-0.5)DL



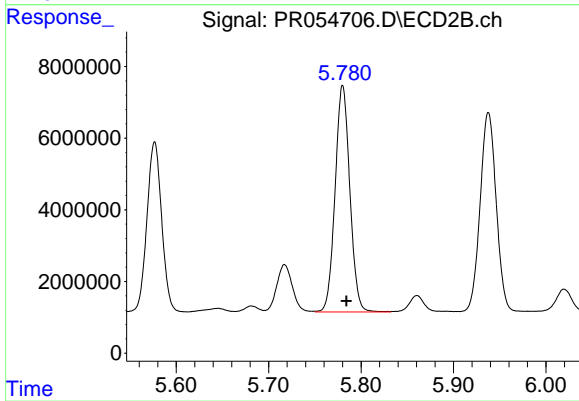
#31 AR-1260-1

R.T.: 5.577 min  
Delta R.T.: -0.004 min  
Response: 52753727  
Conc: 563.32 ng/ml



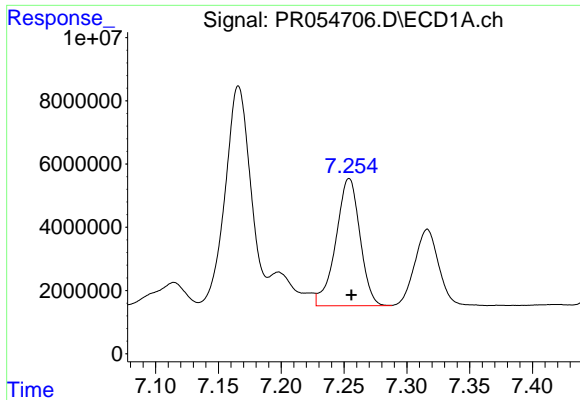
#32 AR-1260-2

R.T.: 6.863 min  
Delta R.T.: -0.002 min  
Response: 72903757  
Conc: 612.20 ng/ml



#32 AR-1260-2

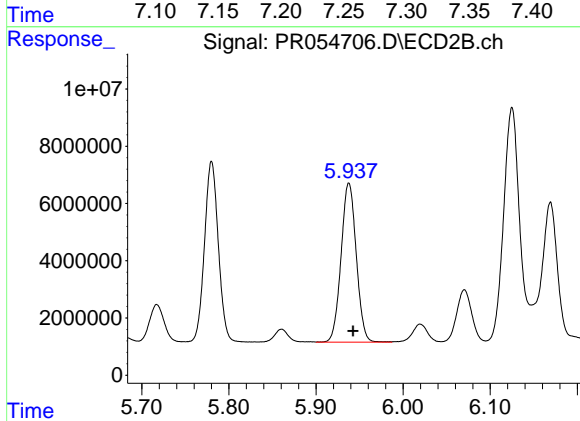
R.T.: 5.780 min  
Delta R.T.: -0.004 min  
Response: 69989258  
Conc: 606.52 ng/ml



#33 AR-1260-3

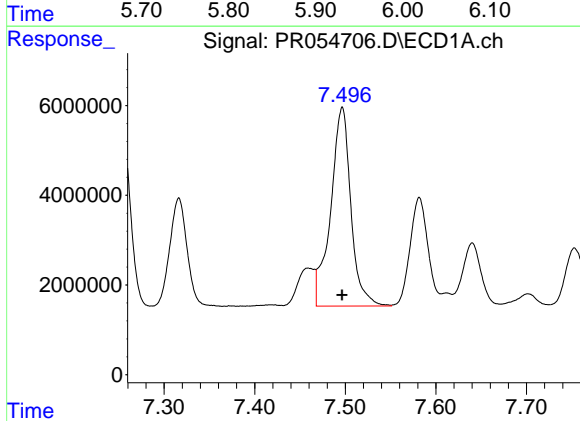
R.T.: 7.254 min  
 Delta R.T.: -0.002 min  
 Response: 53753293  
 Conc: 701.96 ng/ml

Instrument :  
 ECD\_R  
 ClientSampleId :  
 ESB004N7W2(0-0.5)DL



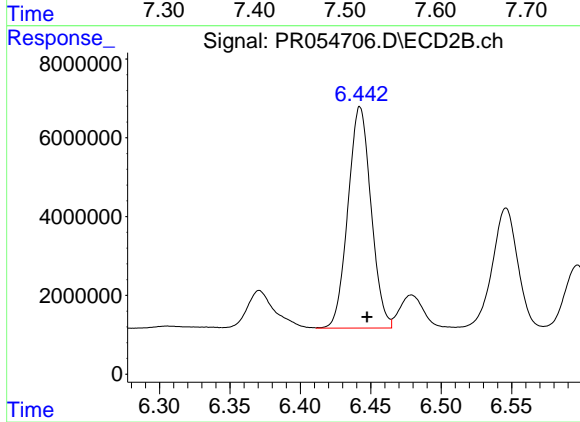
#33 AR-1260-3

R.T.: 5.938 min  
 Delta R.T.: -0.005 min  
 Response: 67295361  
 Conc: 561.84 ng/ml



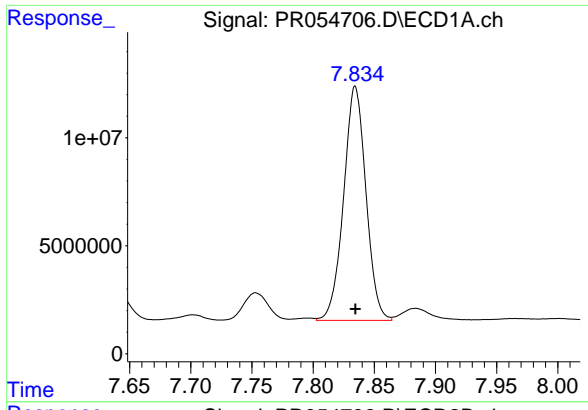
#34 AR-1260-4

R.T.: 7.497 min  
 Delta R.T.: 0.000 min  
 Response: 68860660  
 Conc: 763.83 ng/ml



#34 AR-1260-4

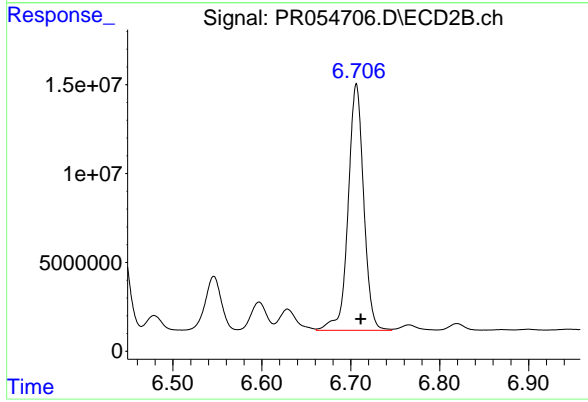
R.T.: 6.442 min  
 Delta R.T.: -0.005 min  
 Response: 64054841  
 Conc: 778.15 ng/ml



#35 AR-1260-5

R.T.: 7.834 min  
Delta R.T.: 0.000 min  
Response: 137723435  
Conc: 823.49 ng/ml

Instrument :  
ECD\_R  
ClientSampleId :  
ESB004N7W2(0-0.5)DL



#35 AR-1260-5

R.T.: 6.706 min  
Delta R.T.: -0.005 min  
Response: 168343874  
Conc: 865.08 ng/ml