

Data Path : Z:\pestpcbsrv\HPCHEM1\ECD\_R\Data\PR060722\  
 Data File : PR054714.D  
 Signal(s) : Signal #1: ECD1A.ch Signal #2: ECD2B.ch  
 Acq On : 07 Jun 2022 13:23  
 Operator : AJ\MA  
 Sample : N3183-01  
 Misc :  
 ALS Vial : 19 Sample Multiplier: 1

Instrument :  
 ECD\_R  
 ClientSampleId :  
 ESB004N7(0-0.5)

Integration File signal 1: autoint1.e  
 Integration File signal 2: autoint2.e  
 Quant Time: Jun 07 15:16:30 2022  
 Quant Method : Z:\pestpcbsrv\HPCHEM1\ECD\_R\Method\PR053122.M  
 Quant Title : GC EXTRACTABLES  
 QLast Update : Wed Jun 01 05:23:25 2022  
 Response via : Initial Calibration  
 Integrator: ChemStation

Volume Inj. : 2 µl  
 Signal #1 Phase : ZB-MR1 Signal #2 Phase: ZB-MR2  
 Signal #1 Info : 30Mx0.32mmx 0.50µ Signal #2 Info : 30M x 0.32mm x 0.25µm

Compound	RT#1	RT#2	Resp#1	Resp#2	ng/ml	ng/ml
-----						
System Monitoring Compounds						
1) SA Tetrachlo...	3.650	2.925	70682602	32606766	17.510	17.586
2) SA Decachlor...	9.538	8.149	39036632	32275454	23.886	19.297
Target Compounds						
31) L7 AR-1260-1	6.582	5.577	2882.9E6	2873.5E6	28026.539	30684.571
32) L7 AR-1260-2	6.864	5.781	3834.6E6	3793.7E6	32200.647	32875.663
33) L7 AR-1260-3	7.255	5.938	3208.3E6	3879.8E6	41896.843	32391.960
34) L7 AR-1260-4	7.497	6.443	4317.5E6	3955.5E6	47891.194	48052.135
35) L7 AR-1260-5	7.834	6.707	8890.2E6	9790.4E6	53157.629	50310.578
-----						

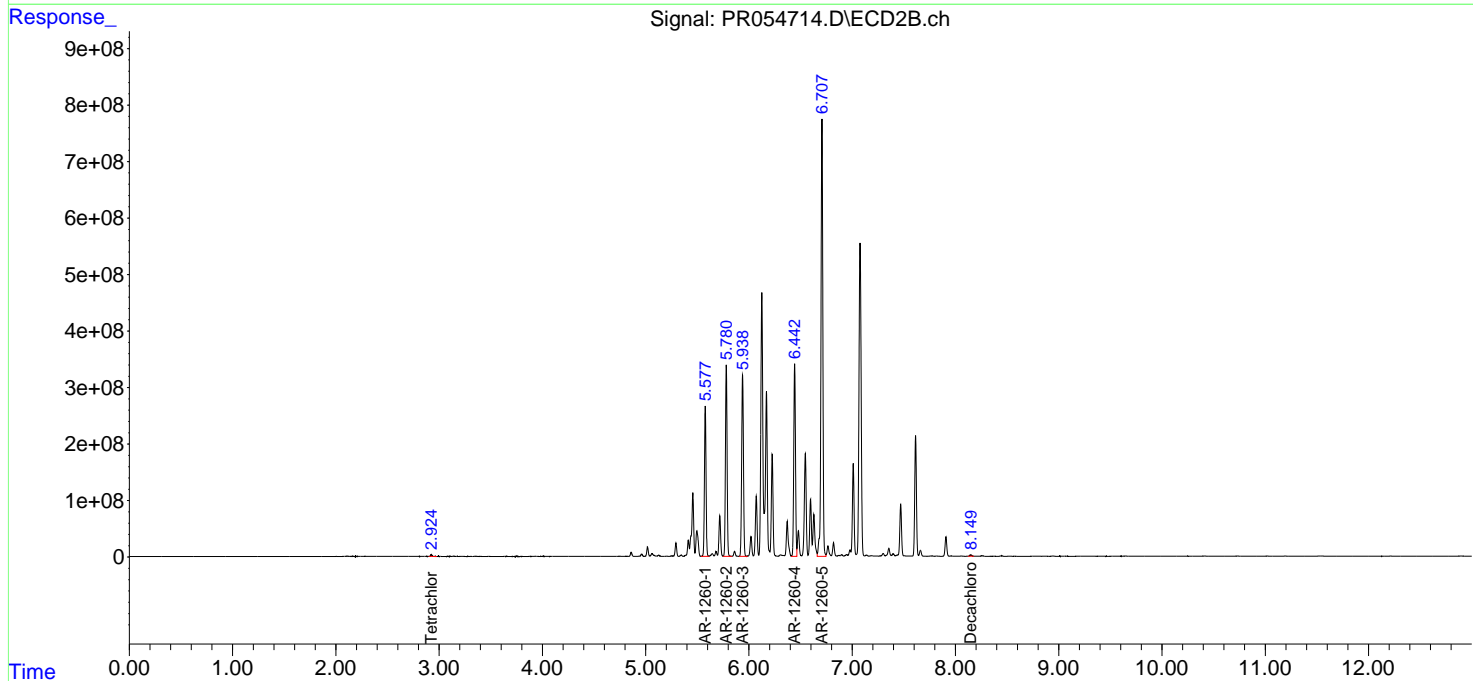
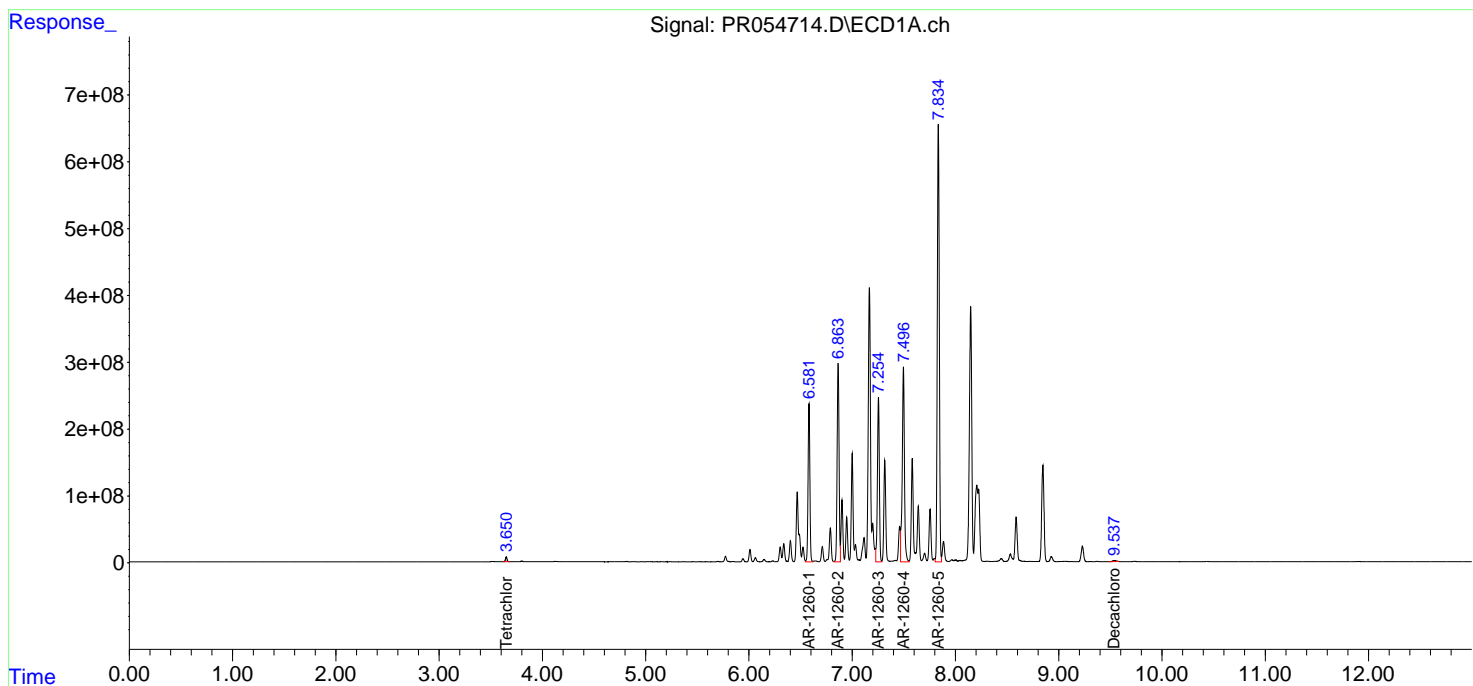
(f)=RT Delta > 1/2 Window (#)=Amounts differ by > 25% (m)=manual int.

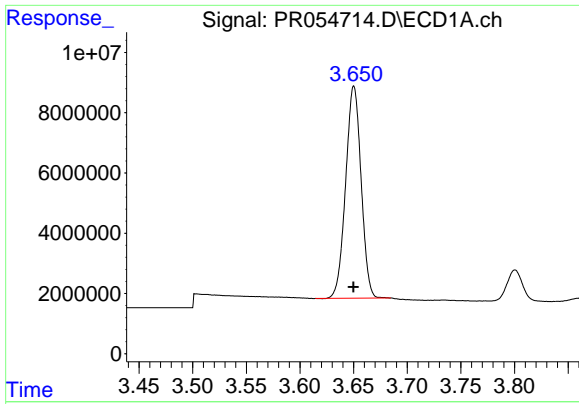
Data Path : Z:\pestpcbsrv\HPCHEM1\ECD\_R\Data\PR060722\  
 Data File : PR054714.D  
 Signal(s) : Signal #1: ECD1A.ch Signal #2: ECD2B.ch  
 Acq On : 07 Jun 2022 13:23  
 Operator : AJ\MA  
 Sample : N3183-01  
 Misc :  
 ALS Vial : 19 Sample Multiplier: 1

Instrument :  
 ECD\_R  
 ClientSampleId :  
 ESB004N7(0-0.5)

Integration File signal 1: autoint1.e  
 Integration File signal 2: autoint2.e  
 Quant Time: Jun 07 15:16:30 2022  
 Quant Method : Z:\pestpcbsrv\HPCHEM1\ECD\_R\Method\PR053122.M  
 Quant Title : GC EXTRACTABLES  
 QLast Update : Wed Jun 01 05:23:25 2022  
 Response via : Initial Calibration  
 Integrator: ChemStation

Volume Inj. : 2 µl  
 Signal #1 Phase : ZB-MR1 Signal #2 Phase: ZB-MR2  
 Signal #1 Info : 30Mx0.32mmx 0.50µ Signal #2 Info : 30M x 0.32mm x 0.25µm

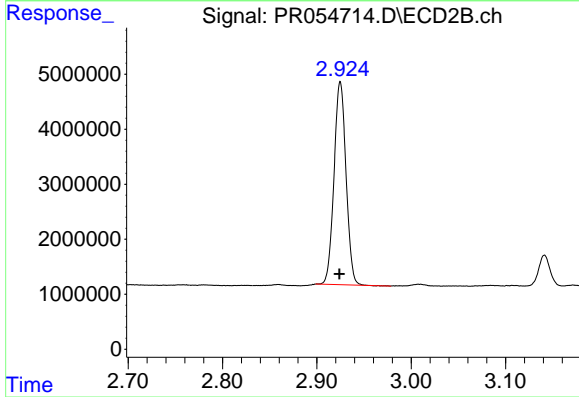




#1 Tetrachloro-m-xylene

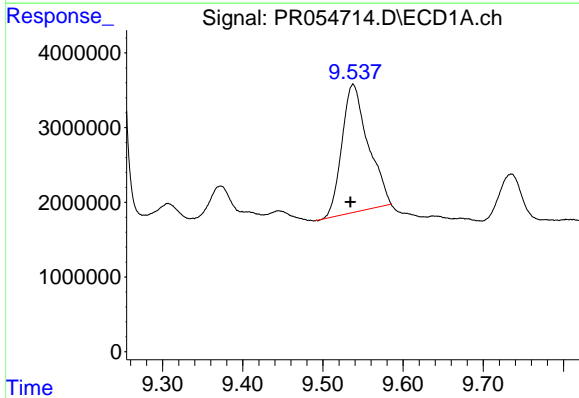
R.T.: 3.650 min  
 Delta R.T.: 0.000 min  
 Response: 70682602  
 Conc: 17.51 ng/ml

Instrument :  
 ECD\_R  
 ClientSampleId :  
 ESB004N7(0-0.5)



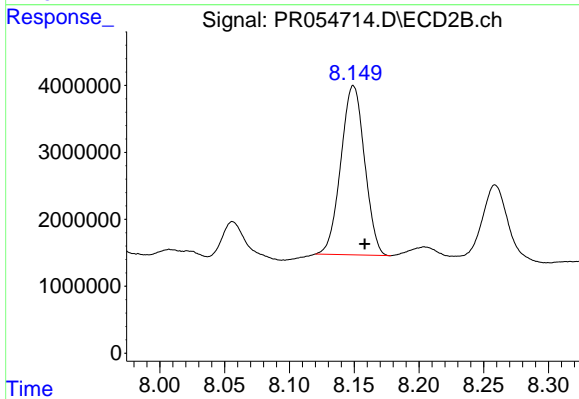
#1 Tetrachloro-m-xylene

R.T.: 2.925 min  
 Delta R.T.: 0.000 min  
 Response: 32606766  
 Conc: 17.59 ng/ml



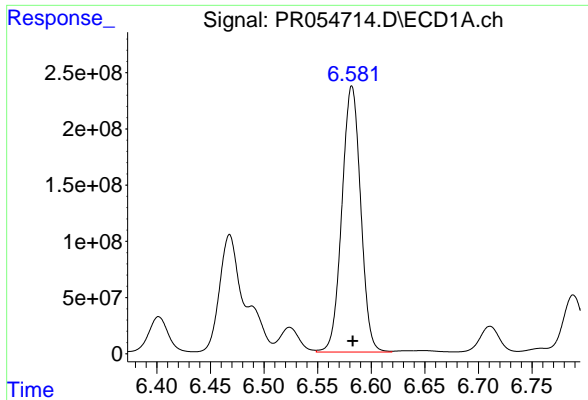
#2 Decachlorobiphenyl

R.T.: 9.538 min  
 Delta R.T.: 0.003 min  
 Response: 39036632  
 Conc: 23.89 ng/ml



#2 Decachlorobiphenyl

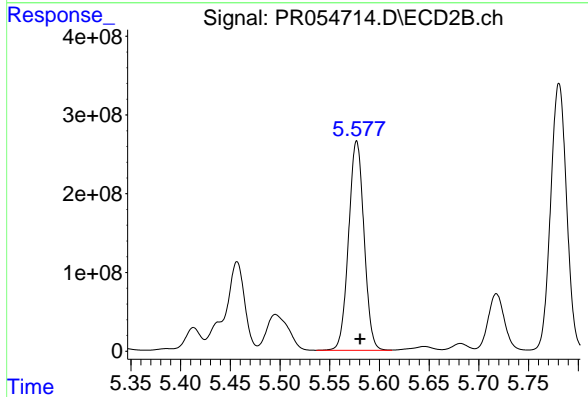
R.T.: 8.149 min  
 Delta R.T.: -0.009 min  
 Response: 32275454  
 Conc: 19.30 ng/ml



#31 AR-1260-1

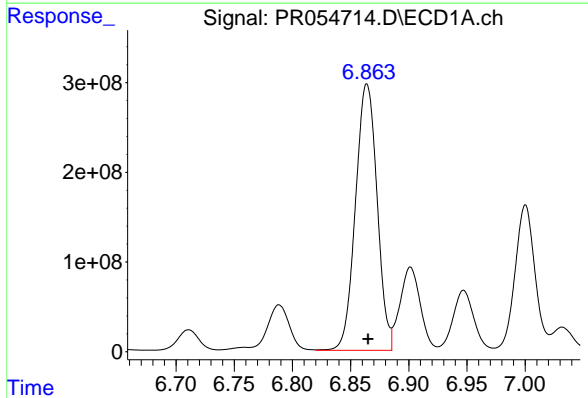
R.T.: 6.582 min  
 Delta R.T.: 0.000 min  
 Response: 2882887961  
 Conc: 28026.54 ng/ml

Instrument :  
 ECD\_R  
 ClientSampleId :  
 ESB004N7(0-0.5)



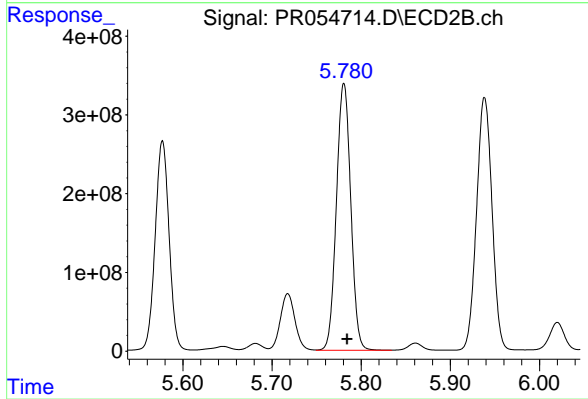
#31 AR-1260-1

R.T.: 5.577 min  
 Delta R.T.: -0.003 min  
 Response: 2873537515  
 Conc: 30684.57 ng/ml



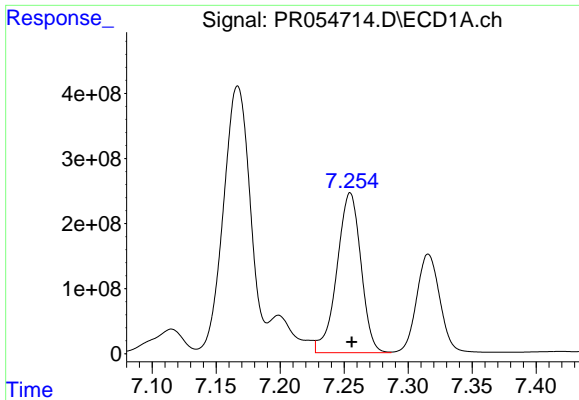
#32 AR-1260-2

R.T.: 6.864 min  
 Delta R.T.: 0.000 min  
 Response: 3834595666  
 Conc: 32200.65 ng/ml



#32 AR-1260-2

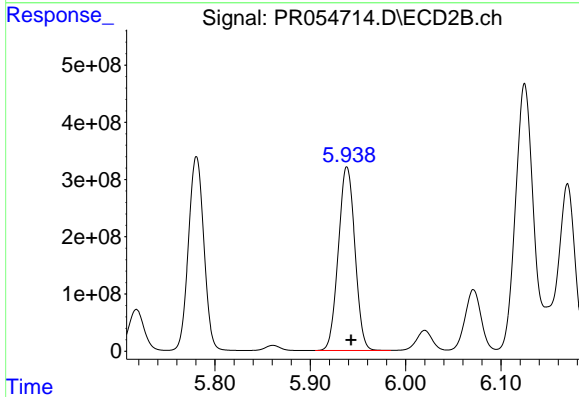
R.T.: 5.781 min  
 Delta R.T.: -0.004 min  
 Response: 3793676202  
 Conc: 32875.66 ng/ml



#33 AR-1260-3

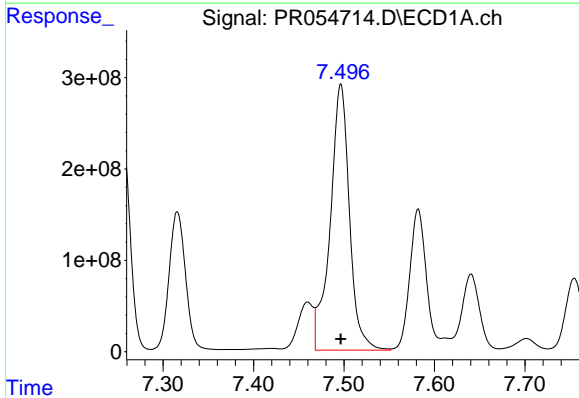
R.T.: 7.255 min  
 Delta R.T.: -0.001 min  
 Response: 3208290385  
 Conc: 41896.84 ng/ml

Instrument :  
 ECD\_R  
 ClientSampleId :  
 ESB004N7(0-0.5)



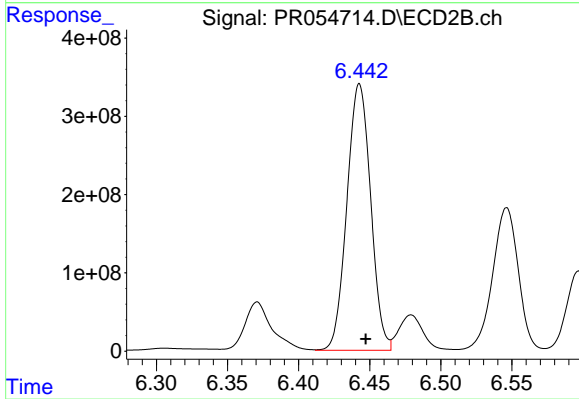
#33 AR-1260-3

R.T.: 5.938 min  
 Delta R.T.: -0.004 min  
 Response: 3879806045  
 Conc: 32391.96 ng/ml



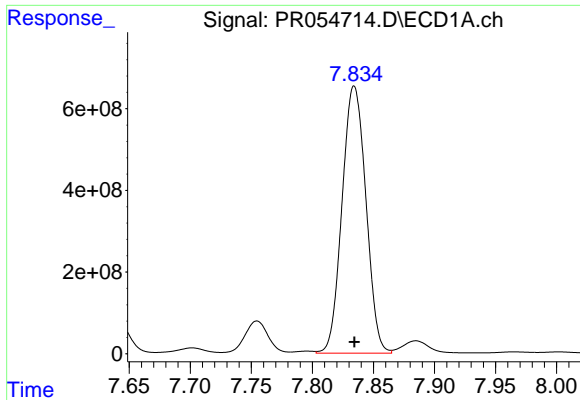
#34 AR-1260-4

R.T.: 7.497 min  
 Delta R.T.: 0.000 min  
 Response: 4317477458  
 Conc: 47891.19 ng/ml



#34 AR-1260-4

R.T.: 6.443 min  
 Delta R.T.: -0.004 min  
 Response: 3955507396  
 Conc: 48052.14 ng/ml



#35 AR-1260-5

R.T.: 7.834 min

Delta R.T.: 0.000 min

Response: 8890249496

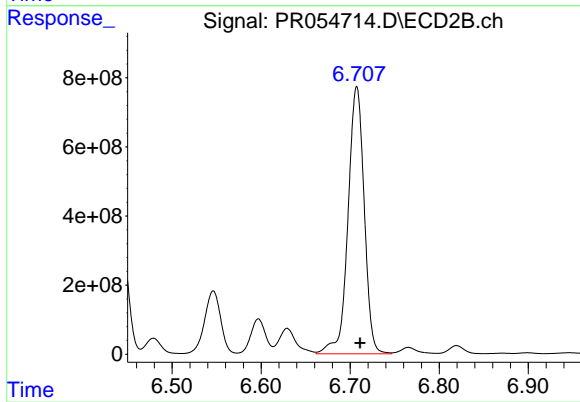
Conc: 53157.63 ng/ml

Instrument :

ECD\_R

ClientSampleId :

ESB004N7(0-0.5)



#35 AR-1260-5

R.T.: 6.707 min

Delta R.T.: -0.004 min

Response: 9790400412

Conc: 50310.58 ng/ml