

Data Path : Z:\pestpcbsrv\HPCHEM1\ECD_R\Data\PR060722\
 Data File : PR054751.D
 Signal(s) : Signal #1: ECD1A.ch Signal #2: ECD2B.ch
 Acq On : 08 Jun 2022 00:37
 Operator : AJ\MA
 Sample : N3209-01
 Misc :
 ALS Vial : 50 Sample Multiplier: 1

Instrument :
 ECD_R
ClientSampleId :
 WC-14B-4

Manual Integrations
APPROVED

Reviewed By :Yogesh Patel 06/08/2022
 Supervised By :Ankita Jodhani 06/08/2022

Integration File signal 1: autoint1.e
 Integration File signal 2: autoint2.e
 Quant Time: Jun 08 01:45:30 2022
 Quant Method : Z:\pestpcbsrv\HPCHEM1\ECD_R\Method\PR053122.M
 Quant Title : GC EXTRACTABLES
 QLast Update : Wed Jun 01 05:23:25 2022
 Response via : Initial Calibration
 Integrator: ChemStation

Volume Inj. : 2 µl
 Signal #1 Phase : ZB-MR1 Signal #2 Phase: ZB-MR2
 Signal #1 Info : 30Mx0.32mmx 0.50µ Signal #2 Info : 30M x 0.32mm x 0.25µm

Compound	RT#1	RT#2	Resp#1	Resp#2	ng/ml	ng/ml

System Monitoring Compounds						
1) SA Tetrachlo...	3.652	2.927	54462604	28727115	13.492	15.493
2) SA Decachlor...	9.537	8.150	27705868	26236168	16.953	15.686
Target Compounds						
31) L7 AR-1260-1	6.582	5.577	6718351	5951091	65.314	63.548m
32) L7 AR-1260-2	6.853	5.781	32838731	6745505	275.760	58.456m#
33) L7 AR-1260-3	7.254	5.938	5337645	6329914	69.704	52.848m
34) L7 AR-1260-4	7.496	6.443	7978201	5685524	88.497	69.069
35) L7 AR-1260-5	7.834	6.706	12926276	12457240	77.290	64.015

(f)=RT Delta > 1/2 Window (#)=Amounts differ by > 25% (m)=manual int.

Data Path : Z:\pestpcbsrv\HPCHEM1\ECD_R\Data\PR060722\
 Data File : PR054751.D
 Signal(s) : Signal #1: ECD1A.ch Signal #2: ECD2B.ch
 Acq On : 08 Jun 2022 00:37
 Operator : AJ\MA
 Sample : N3209-01
 Misc :
 ALS Vial : 50 Sample Multiplier: 1

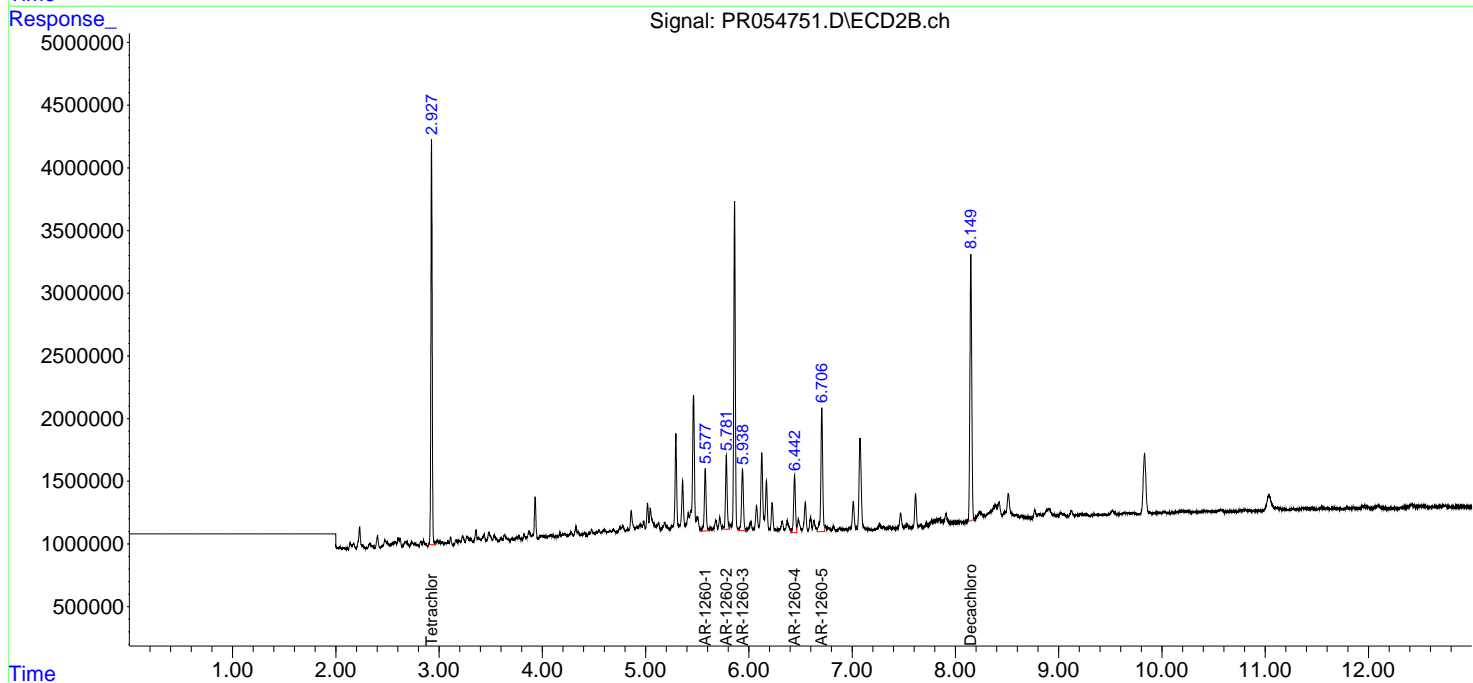
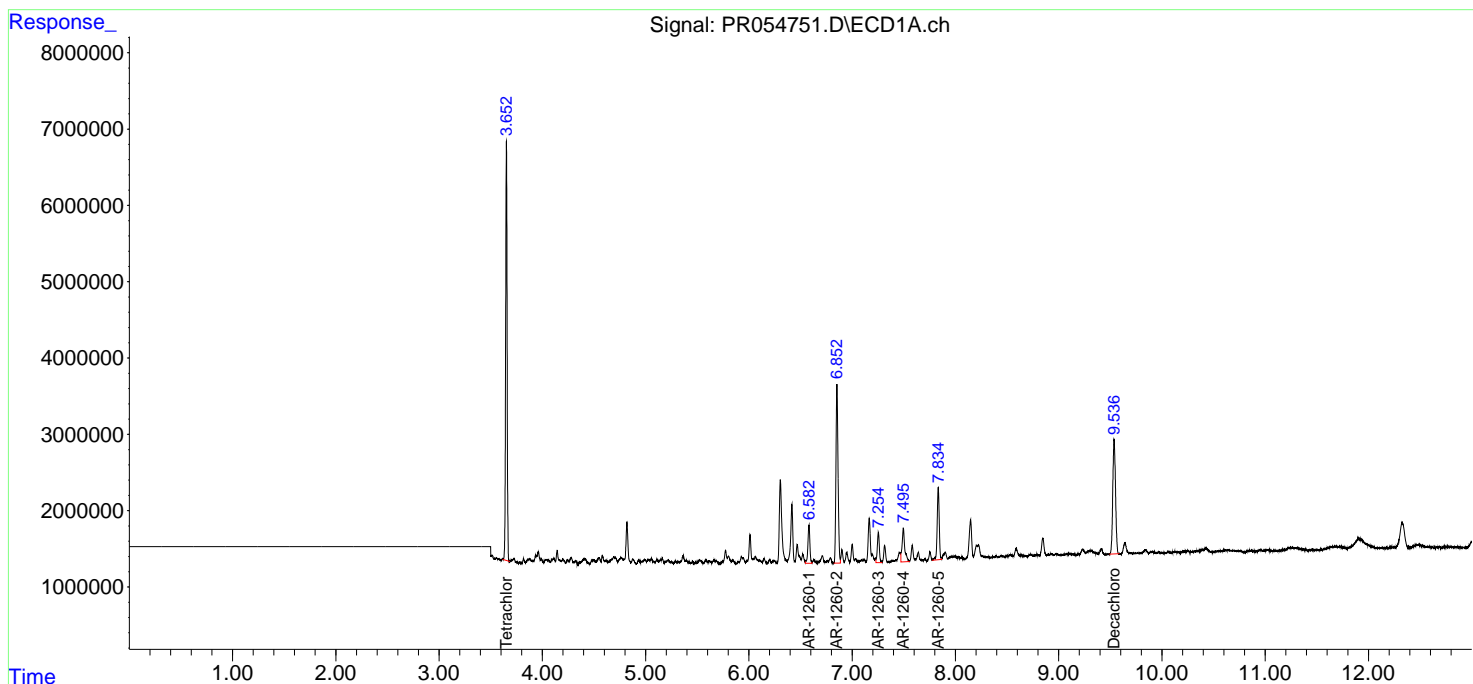
Instrument :
 ECD_R
 ClientSampleId :
 WC-14B-4

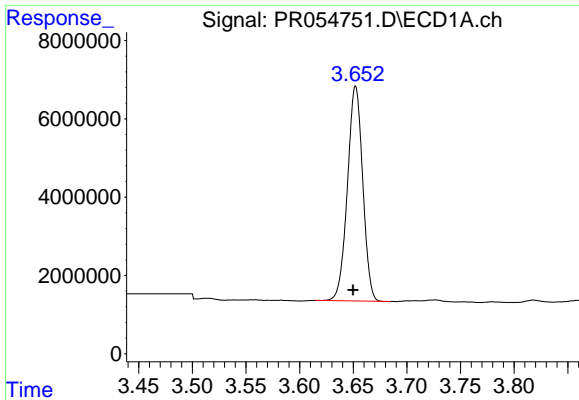
Manual Integrations
APPROVED

Reviewed By :Yogesh Patel 06/08/2022
 Supervised By :Ankita Jodhani 06/08/2022

Integration File signal 1: autoint1.e
 Integration File signal 2: autoint2.e
 Quant Time: Jun 08 01:45:30 2022
 Quant Method : Z:\pestpcbsrv\HPCHEM1\ECD_R\Method\PR053122.M
 Quant Title : GC EXTRACTABLES
 QLast Update : Wed Jun 01 05:23:25 2022
 Response via : Initial Calibration
 Integrator: ChemStation

Volume Inj. : 2 µl
 Signal #1 Phase : ZB-MR1 Signal #2 Phase: ZB-MR2
 Signal #1 Info : 30Mx0.32mmx 0.50µ Signal #2 Info : 30M x 0.32mm x 0.25µm

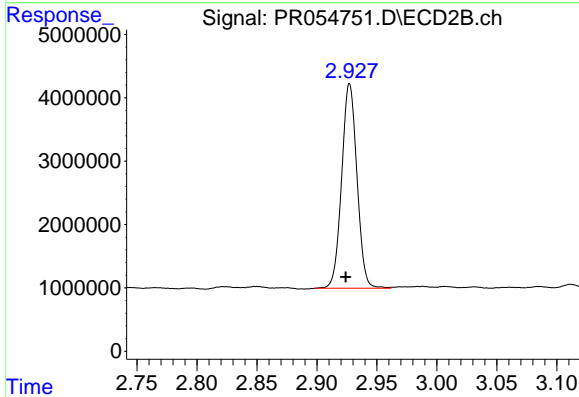




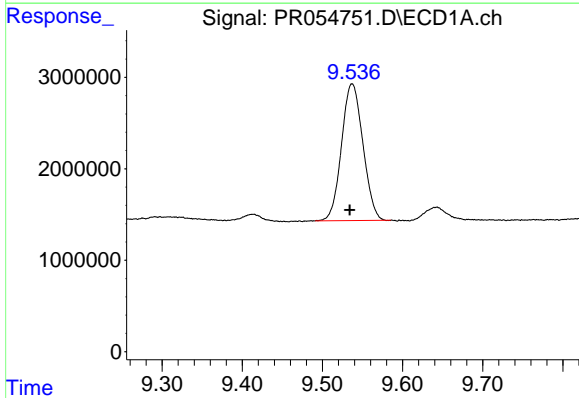
#1 Tetrachloro-m-xylene
 R.T.: 3.652 min
 Delta R.T.: 0.002 min
 Response: 54462604
 Conc: 13.49 ng/ml

Instrument : ECD_R
 Client Sample Id : WC-14B-4

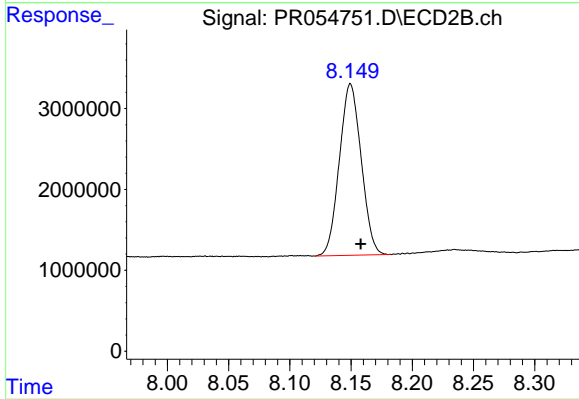
Manual Integrations
APPROVED
 Reviewed By :Yogesh Patel 06/08/2022
 Supervised By :Ankita Jodhani 06/08/2022



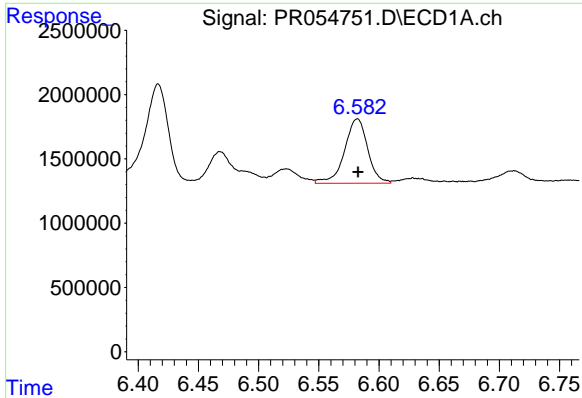
#1 Tetrachloro-m-xylene
 R.T.: 2.927 min
 Delta R.T.: 0.003 min
 Response: 28727115
 Conc: 15.49 ng/ml



#2 Decachlorobiphenyl
 R.T.: 9.537 min
 Delta R.T.: 0.003 min
 Response: 27705868
 Conc: 16.95 ng/ml



#2 Decachlorobiphenyl
 R.T.: 8.150 min
 Delta R.T.: -0.009 min
 Response: 26236168
 Conc: 15.69 ng/ml



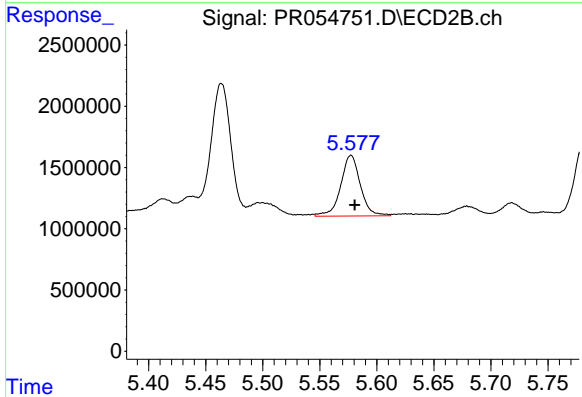
#31 AR-1260-1

R.T.: 6.582 min
 Delta R.T.: 0.000 min
 Response: 6718351
 Conc: 65.31 ng/ml

Instrument :
 ECD_R
 ClientSampleId :
 WC-14B-4

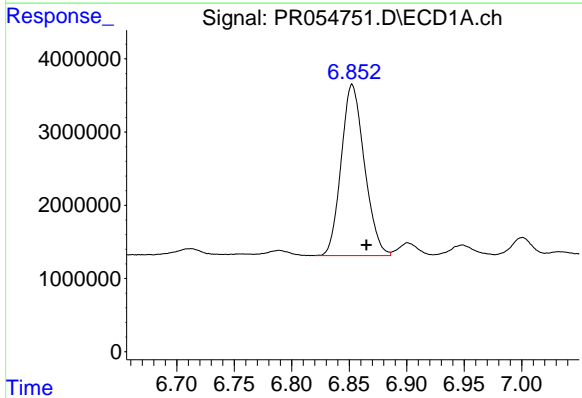
Manual Integrations
 APPROVED

Reviewed By :Yogesh Patel 06/08/2022
 Supervised By :Ankita Jodhani 06/08/2022



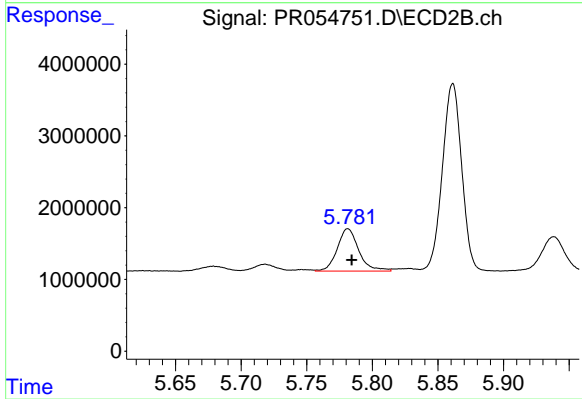
#31 AR-1260-1

R.T.: 5.577 min
 Delta R.T.: -0.004 min
 Response: 5951091
 Conc: 63.55 ng/ml m



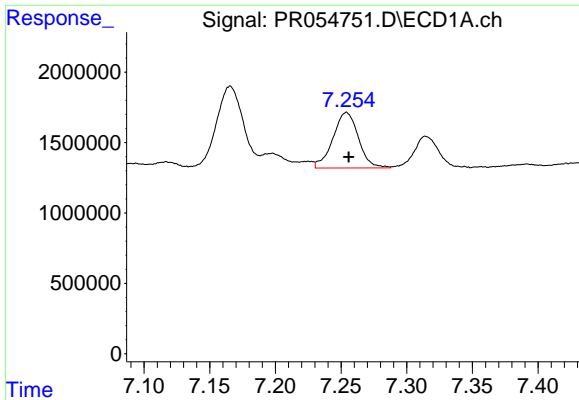
#32 AR-1260-2

R.T.: 6.853 min
 Delta R.T.: -0.013 min
 Response: 32838731
 Conc: 275.76 ng/ml



#32 AR-1260-2

R.T.: 5.781 min
 Delta R.T.: -0.003 min
 Response: 6745505
 Conc: 58.46 ng/ml m



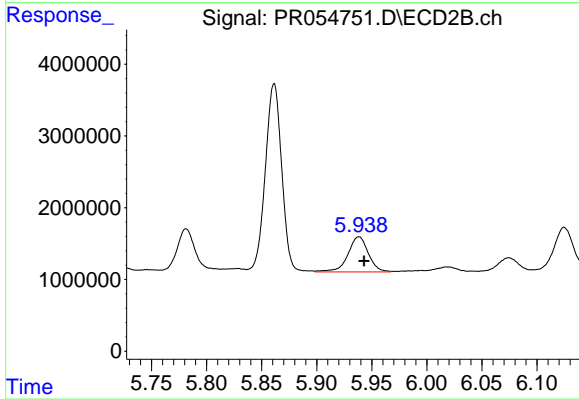
#33 AR-1260-3

R.T.: 7.254 min
 Delta R.T.: -0.002 min
 Response: 5337645
 Conc: 69.70 ng/ml

Instrument :
 ECD_R
 ClientSampleId :
 WC-14B-4

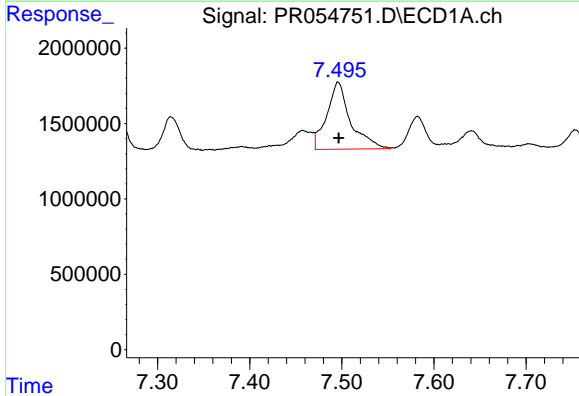
Manual Integrations
 APPROVED

Reviewed By :Yogesh Patel 06/08/2022
 Supervised By :Ankita Jodhani 06/08/2022



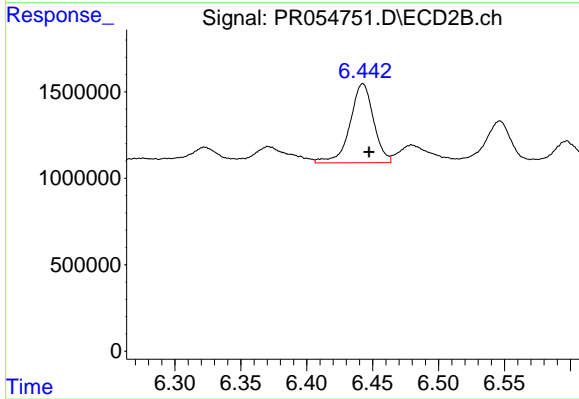
#33 AR-1260-3

R.T.: 5.938 min
 Delta R.T.: -0.005 min
 Response: 6329914
 Conc: 52.85 ng/ml m



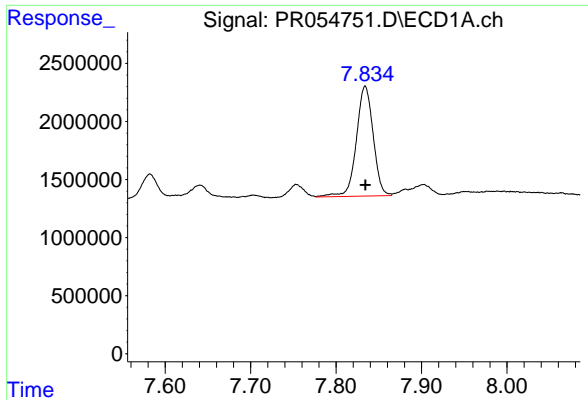
#34 AR-1260-4

R.T.: 7.496 min
 Delta R.T.: 0.000 min
 Response: 7978201
 Conc: 88.50 ng/ml



#34 AR-1260-4

R.T.: 6.443 min
 Delta R.T.: -0.005 min
 Response: 5685524
 Conc: 69.07 ng/ml



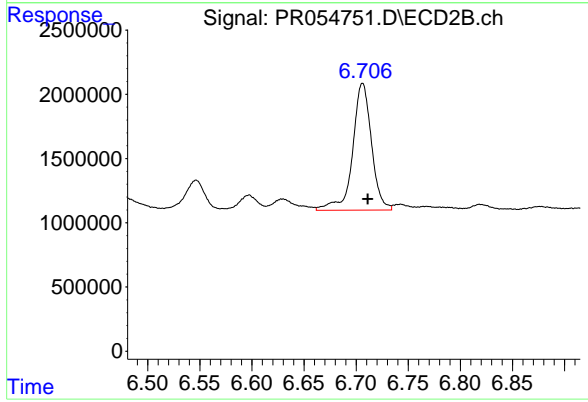
#35 AR-1260-5

R.T.: 7.834 min
 Delta R.T.: 0.000 min
 Response: 12926276
 Conc: 77.29 ng/ml

Instrument :
 ECD_R
 ClientSampleId :
 WC-14B-4

Manual Integrations
 APPROVED

Reviewed By :Yogesh Patel 06/08/2022
 Supervised By :Ankita Jodhani 06/08/2022



#35 AR-1260-5

R.T.: 6.706 min
 Delta R.T.: -0.005 min
 Response: 12457240
 Conc: 64.01 ng/ml