

Data Path : Z:\pestpcbsrv\HPCHEM1\ECD_R\Data\PR060722\
 Data File : PR054757.D
 Signal(s) : Signal #1: ECD1A.ch Signal #2: ECD2B.ch
 Acq On : 08 Jun 2022 02:55
 Operator : AJ\MA
 Sample : PB145378BS
 Misc :
 ALS Vial : 55 Sample Multiplier: 1

Instrument :
 ECD_R
 ClientSampleId :
 PB145378BS

Integration File signal 1: autoint1.e
 Integration File signal 2: autoint2.e
 Quant Time: Jun 08 05:06:01 2022
 Quant Method : Z:\pestpcbsrv\HPCHEM1\ECD_R\Method\PR053122.M
 Quant Title : GC EXTRACTABLES
 QLast Update : Wed Jun 01 05:23:25 2022
 Response via : Initial Calibration
 Integrator: ChemStation

Volume Inj. : 2 µl
 Signal #1 Phase : ZB-MR2 Signal #2 Phase: ZB-MR2
 Signal #1 Info : 30Mx0.32mmx 0.50µ Signal #2 Info : 30M x 0.32mm x 0.25µm

Compound	RT#1	RT#2	Resp#1	Resp#2	ng/ml	ng/ml

System Monitoring Compounds						
1) SA Tetrachlo...	3.649	2.925	83777473	37404080	20.754	20.173
2) SA Decachlor...	9.536	8.147	32446816	32612271	19.854	19.498
Target Compounds						
3) L1 AR-1016-1	4.866	4.030	51978263	27700974	407.824	420.194
4) L1 AR-1016-2	4.888	4.048	73320113	38228156	408.937	427.158
5) L1 AR-1016-3	4.952	4.225	44509811	20857306	406.952	429.677
6) L1 AR-1016-4	5.054	4.276	35953596	15912238	409.075	421.339
7) L1 AR-1016-5	5.369	4.491	31769646	20506900	398.650	421.751
31) L7 AR-1260-1	6.580	5.575	41554948	39612670	403.984	422.997
32) L7 AR-1260-2	6.862	5.779	46852122	48387978	393.436	419.326
33) L7 AR-1260-3	7.253	5.936	29303975	45134925	382.679	376.825
34) L7 AR-1260-4	7.495	6.440	36322856	33045923	402.908	401.447
35) L7 AR-1260-5	7.833	6.705	64134917	79265310	383.483	407.326

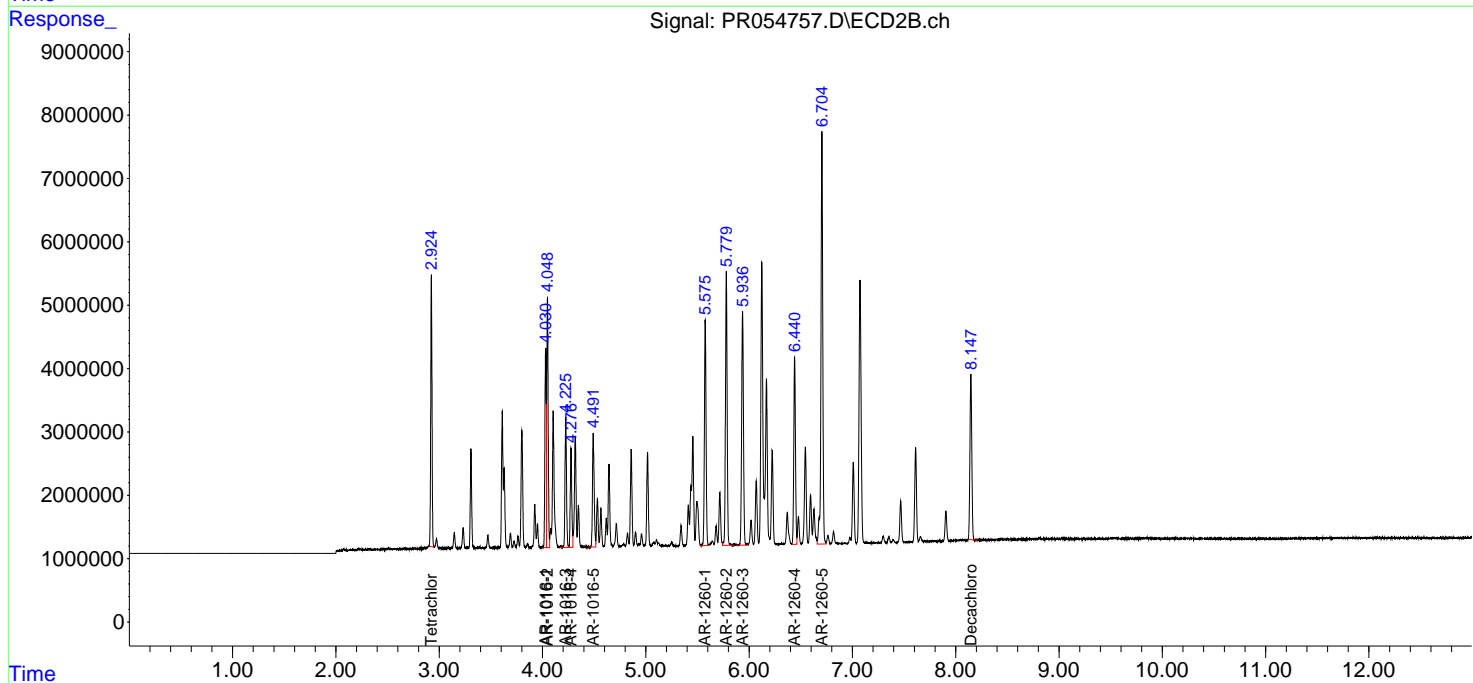
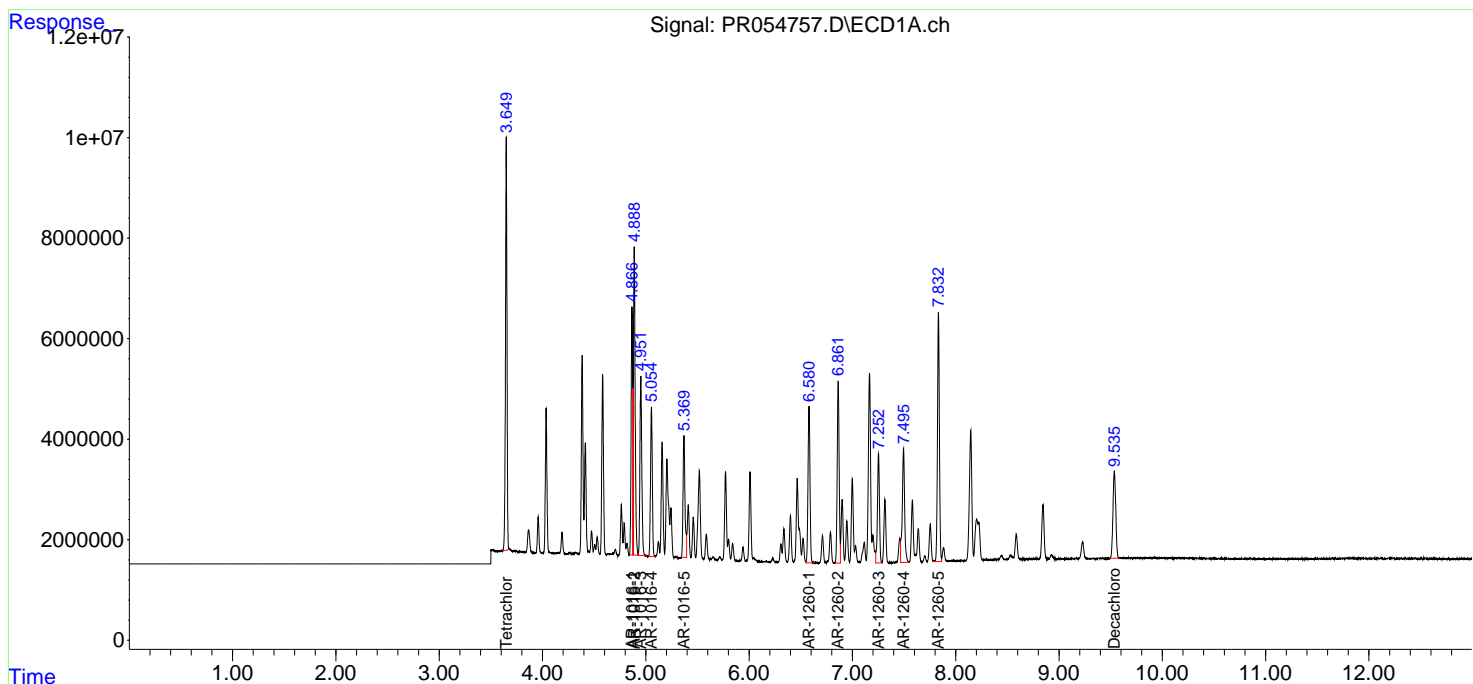
(f)=RT Delta > 1/2 Window (#)=Amounts differ by > 25% (m)=manual int.

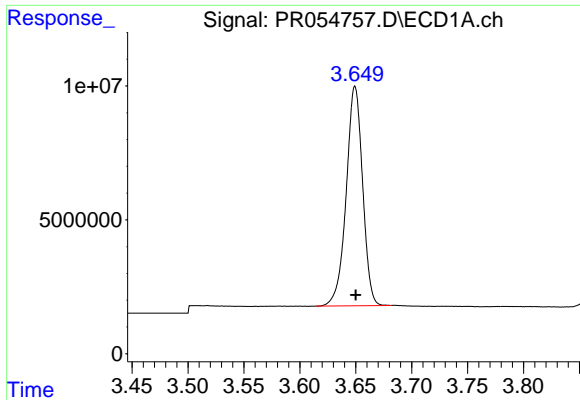
Data Path : Z:\pestpcbsrv\HPCHEM1\ECD_R\Data\PR060722\
 Data File : PR054757.D
 Signal(s) : Signal #1: ECD1A.ch Signal #2: ECD2B.ch
 Acq On : 08 Jun 2022 02:55
 Operator : AJ\MA
 Sample : PB145378BS
 Misc :
 ALS Vial : 55 Sample Multiplier: 1

Instrument :
 ECD_R
 ClientSampleId :
 PB145378BS

Integration File signal 1: autoint1.e
 Integration File signal 2: autoint2.e
 Quant Time: Jun 08 05:06:01 2022
 Quant Method : Z:\pestpcbsrv\HPCHEM1\ECD_R\Method\PR053122.M
 Quant Title : GC EXTRACTABLES
 QLast Update : Wed Jun 01 05:23:25 2022
 Response via : Initial Calibration
 Integrator: ChemStation

Volume Inj. : 2 µl
 Signal #1 Phase : ZB-MR1 Signal #2 Phase: ZB-MR2
 Signal #1 Info : 30Mx0.32mmx 0.50µ Signal #2 Info : 30M x 0.32mm x 0.25µm

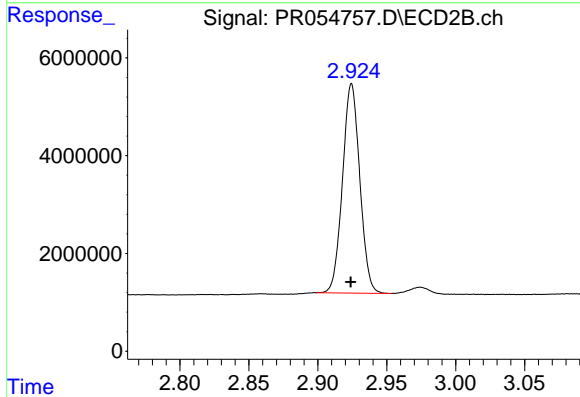




#1 Tetrachloro-m-xylene

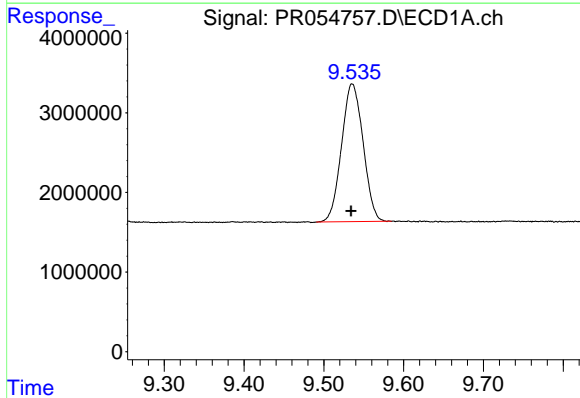
R.T.: 3.649 min
 Delta R.T.: 0.000 min
 Response: 83777473
 Conc: 20.75 ng/ml

Instrument :
 ECD_R
 ClientSampleId :
 PB145378BS



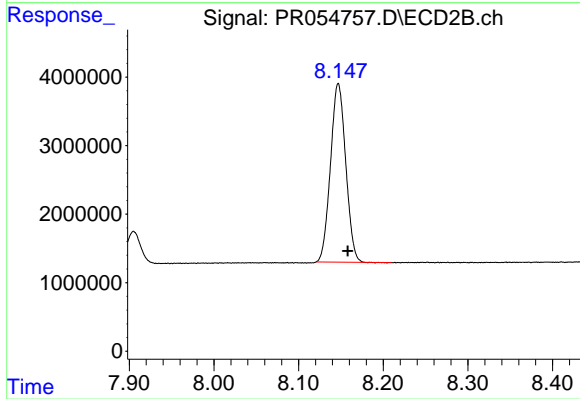
#1 Tetrachloro-m-xylene

R.T.: 2.925 min
 Delta R.T.: 0.000 min
 Response: 37404080
 Conc: 20.17 ng/ml



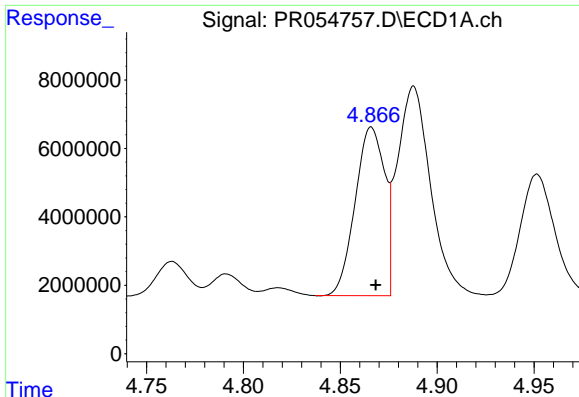
#2 Decachlorobiphenyl

R.T.: 9.536 min
 Delta R.T.: 0.001 min
 Response: 32446816
 Conc: 19.85 ng/ml



#2 Decachlorobiphenyl

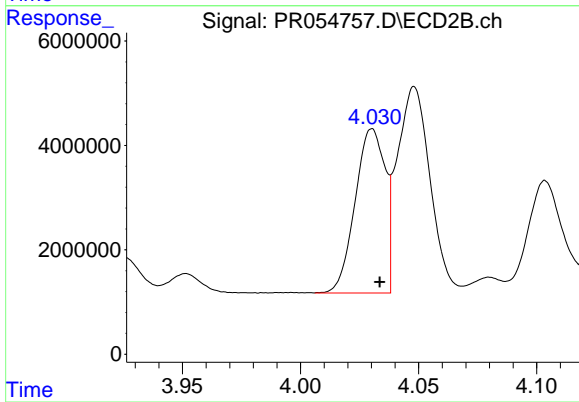
R.T.: 8.147 min
 Delta R.T.: -0.011 min
 Response: 32612271
 Conc: 19.50 ng/ml



#3 AR-1016-1

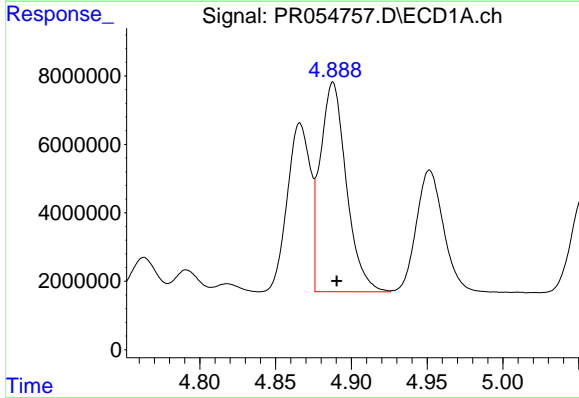
R.T.: 4.866 min
 Delta R.T.: -0.002 min
 Response: 51978263
 Conc: 407.82 ng/ml

Instrument :
 ECD_R
 ClientSampleId :
 PB145378BS



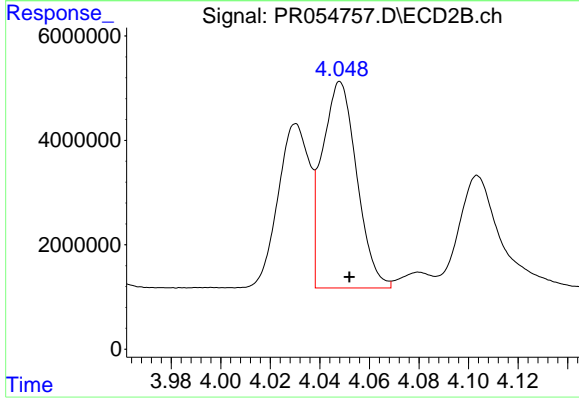
#3 AR-1016-1

R.T.: 4.030 min
 Delta R.T.: -0.003 min
 Response: 27700974
 Conc: 420.19 ng/ml



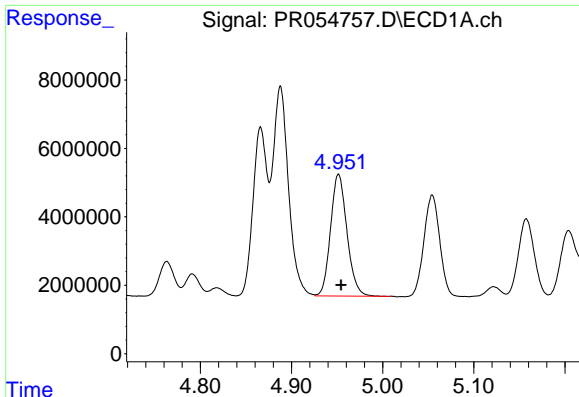
#4 AR-1016-2

R.T.: 4.888 min
 Delta R.T.: -0.003 min
 Response: 73320113
 Conc: 408.94 ng/ml



#4 AR-1016-2

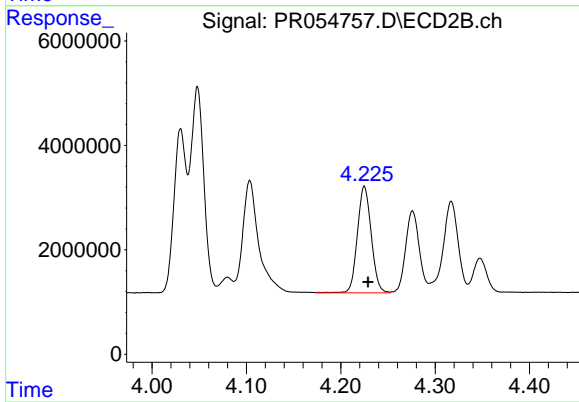
R.T.: 4.048 min
 Delta R.T.: -0.004 min
 Response: 38228156
 Conc: 427.16 ng/ml



#5 AR-1016-3

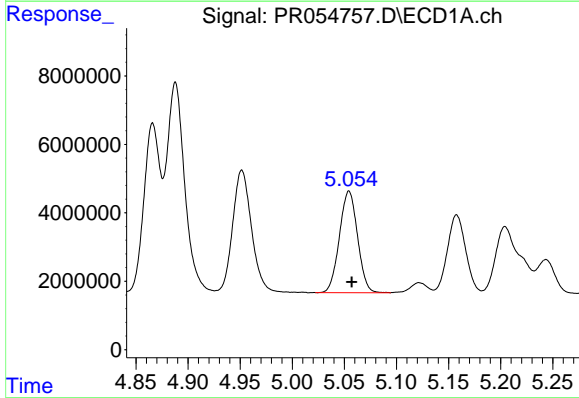
R.T.: 4.952 min
 Delta R.T.: -0.003 min
 Response: 44509811
 Conc: 406.95 ng/ml

Instrument :
 ECD_R
 ClientSampleId :
 PB145378BS



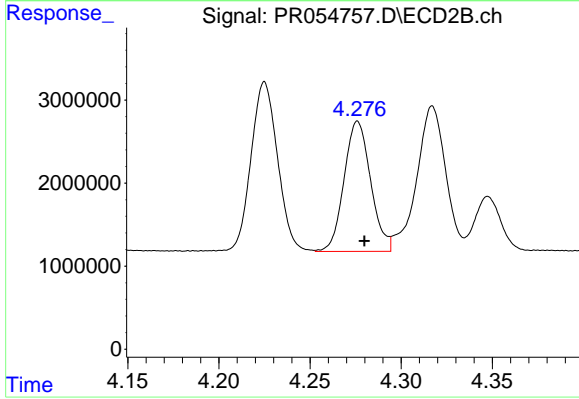
#5 AR-1016-3

R.T.: 4.225 min
 Delta R.T.: -0.004 min
 Response: 20857306
 Conc: 429.68 ng/ml



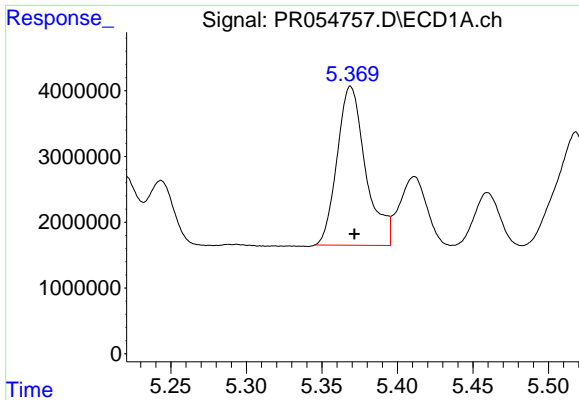
#6 AR-1016-4

R.T.: 5.054 min
 Delta R.T.: -0.002 min
 Response: 35953596
 Conc: 409.07 ng/ml



#6 AR-1016-4

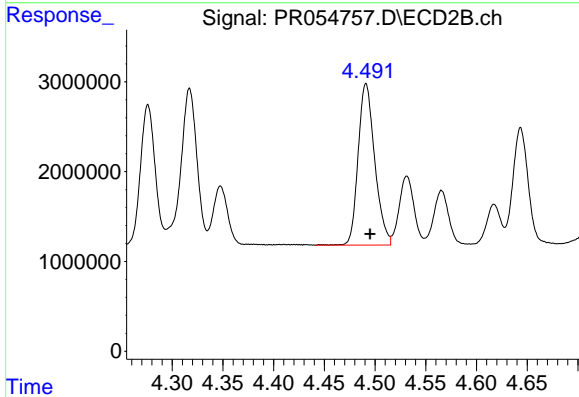
R.T.: 4.276 min
 Delta R.T.: -0.004 min
 Response: 15912238
 Conc: 421.34 ng/ml



#7 AR-1016-5

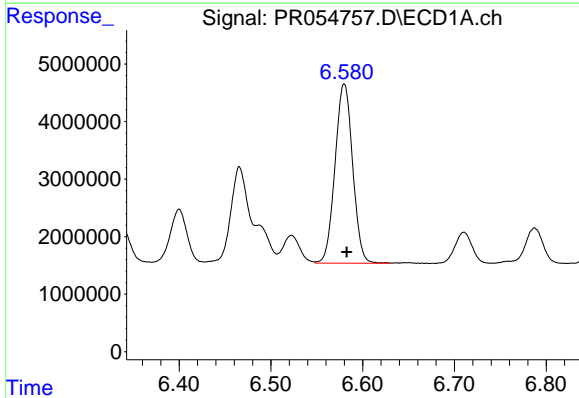
R.T.: 5.369 min
 Delta R.T.: -0.002 min
 Response: 31769646
 Conc: 398.65 ng/ml

Instrument :
 ECD_R
 ClientSampleId :
 PB145378BS



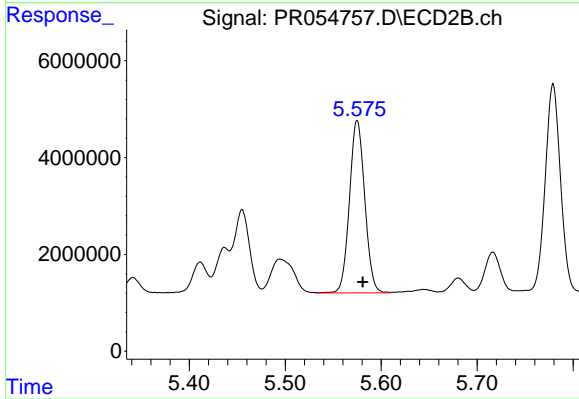
#7 AR-1016-5

R.T.: 4.491 min
 Delta R.T.: -0.004 min
 Response: 20506900
 Conc: 421.75 ng/ml



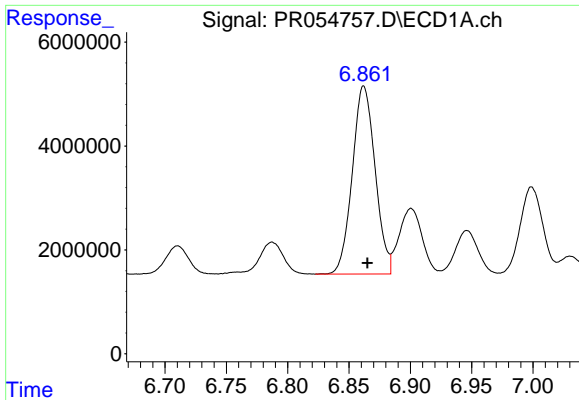
#31 AR-1260-1

R.T.: 6.580 min
 Delta R.T.: -0.003 min
 Response: 41554948
 Conc: 403.98 ng/ml



#31 AR-1260-1

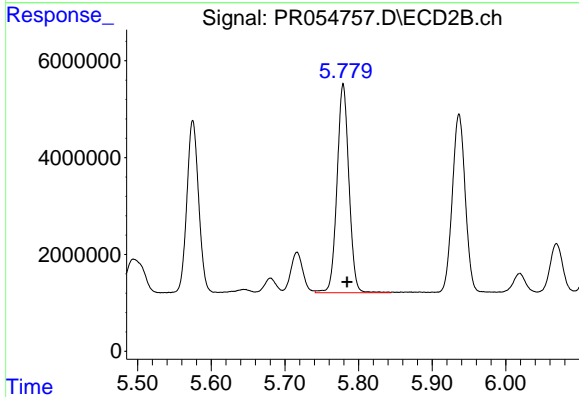
R.T.: 5.575 min
 Delta R.T.: -0.006 min
 Response: 39612670
 Conc: 423.00 ng/ml



#32 AR-1260-2

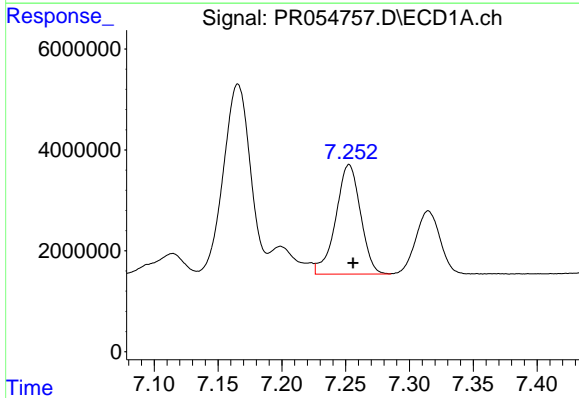
R.T.: 6.862 min
 Delta R.T.: -0.003 min
 Response: 46852122
 Conc: 393.44 ng/ml

Instrument :
 ECD_R
 ClientSampleId :
 PB145378BS



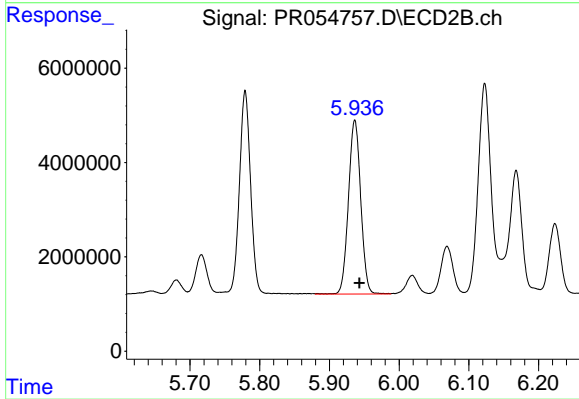
#32 AR-1260-2

R.T.: 5.779 min
 Delta R.T.: -0.005 min
 Response: 48387978
 Conc: 419.33 ng/ml



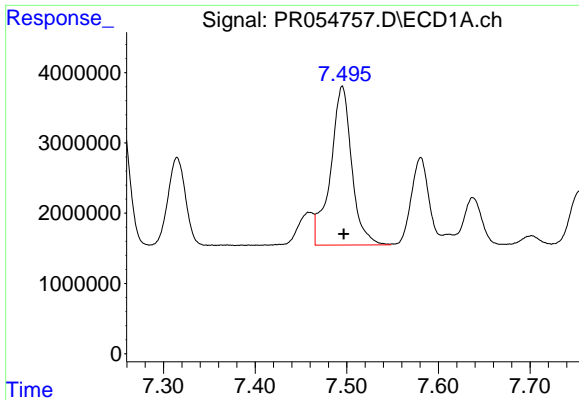
#33 AR-1260-3

R.T.: 7.253 min
 Delta R.T.: -0.003 min
 Response: 29303975
 Conc: 382.68 ng/ml



#33 AR-1260-3

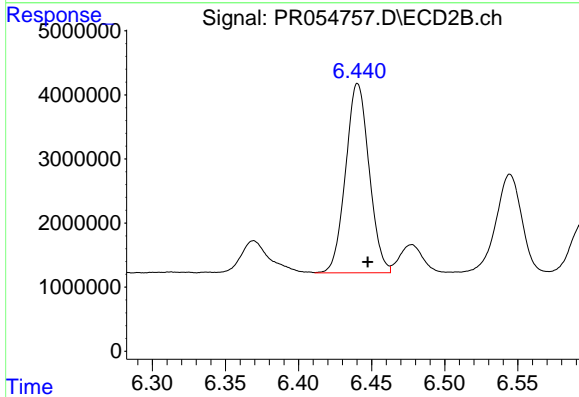
R.T.: 5.936 min
 Delta R.T.: -0.006 min
 Response: 45134925
 Conc: 376.83 ng/ml



#34 AR-1260-4

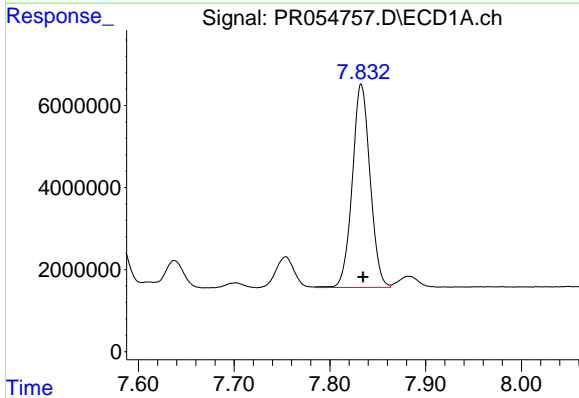
R.T.: 7.495 min
 Delta R.T.: -0.001 min
 Response: 36322856
 Conc: 402.91 ng/ml

Instrument :
 ECD_R
 ClientSampleId :
 PB145378BS



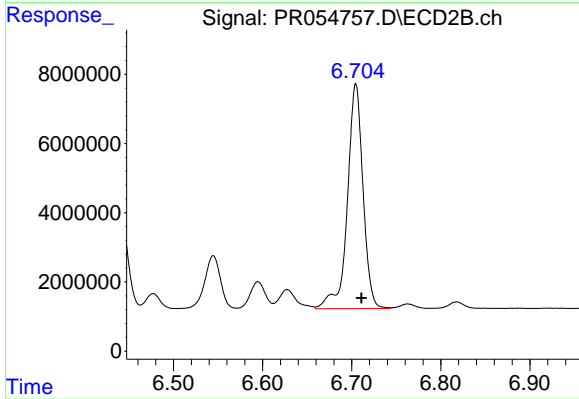
#34 AR-1260-4

R.T.: 6.440 min
 Delta R.T.: -0.007 min
 Response: 33045923
 Conc: 401.45 ng/ml



#35 AR-1260-5

R.T.: 7.833 min
 Delta R.T.: -0.002 min
 Response: 64134917
 Conc: 383.48 ng/ml



#35 AR-1260-5

R.T.: 6.705 min
 Delta R.T.: -0.006 min
 Response: 79265310
 Conc: 407.33 ng/ml