

Data Path : Z:\pestpcbsrv\HPCHEM1\ECD_R\Data\PR061019\
 Data File : PR038610.D
 Signal(s) : Signal #1: ECD1A.ch Signal #2: ECD2B.ch
 Acq On : 10 Jun 2019 10:44
 Operator : SM\MA
 Sample : AR1660ICC500
 Misc :
 ALS Vial : 5 Sample Multiplier: 1

Instrument :
 ECD_R
 ClientSampleId :
 AR1660ICC500

Integration File signal 1: autoint1.e
 Integration File signal 2: autoint2.e
 Quant Time: Jun 10 14:04:45 2019
 Quant Method : Z:\pestpcbsrv\HPCHEM1\ECD_R\Method\PR061019.M
 Quant Title : GC EXTRACTABLES
 QLast Update : Mon Jun 10 14:04:28 2019
 Response via : Initial Calibration
 Integrator: ChemStation

Volume Inj. : 2 µl
 Signal #1 Phase : ZB-MR1 Signal #2 Phase: ZB-MR2
 Signal #1 Info : 30Mx0.32mmx 0.50µ Signal #2 Info : 30M x 0.32mm x 0.25µm

Compound	RT#1	RT#2	Resp#1	Resp#2	ng/ml	ng/ml

System Monitoring Compounds						
1) SA Tetrachlo...	3.771	4.619	90183010	307.7E6	50.000	50.000
2) SA Decachlor...	8.729	10.368	90855926	260.0E6	50.000	50.000
Target Compounds						
3) L1 AR-1016-1	4.844	5.774	32220734	105.8E6	500.000	500.000
4) L1 AR-1016-2	4.862	5.797	51824934	150.9E6	500.000	500.000
5) L1 AR-1016-3	5.036	5.859	25006556	89553689	500.000	500.000
6) L1 AR-1016-4	5.076	5.958	20122690	71737378	500.000	500.000
7) L1 AR-1016-5	5.287	6.248	26141152	71721140	500.000	500.000
31) L7 AR-1260-1	6.304	7.359	49055164	122.4E6	500.000	500.000
32) L7 AR-1260-2	6.489	7.612	62256319	148.2E6	500.000	500.000
33) L7 AR-1260-3	6.642	7.967	55390945	111.8E6	500.000	500.000
34) L7 AR-1260-4	7.108	8.198	46305572	128.5E6	500.000	500.000
35) L7 AR-1260-5	7.345	8.523	122.7E6	271.5E6	500.000	500.000

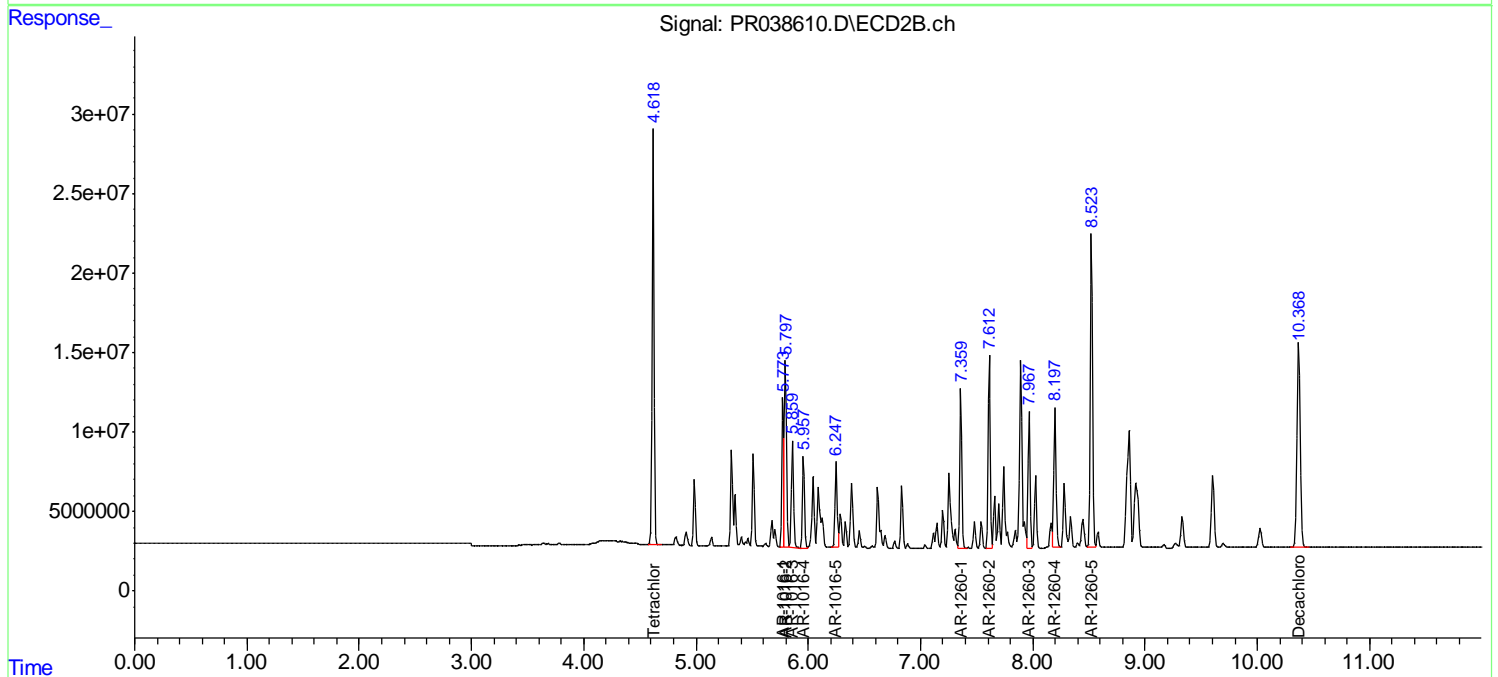
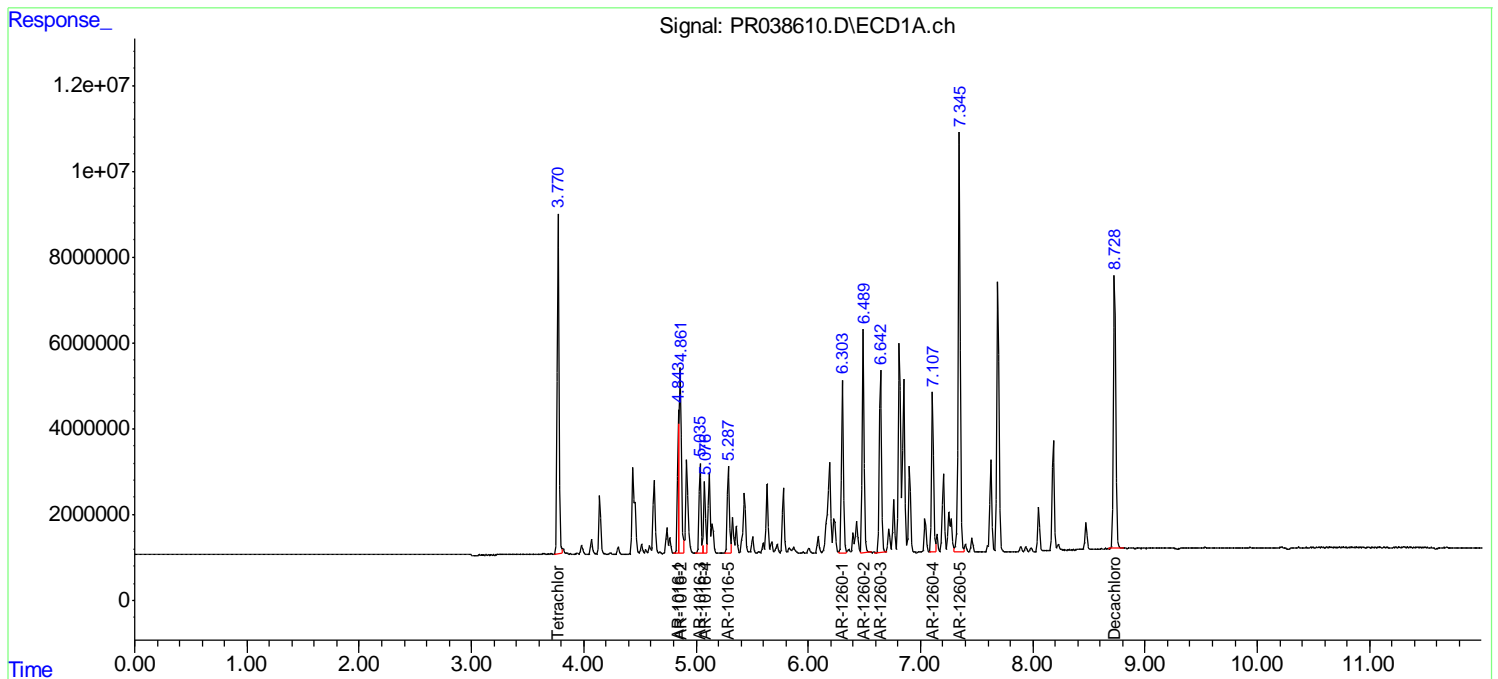
(f)=RT Delta > 1/2 Window (#)=Amounts differ by > 25% (m)=manual int.

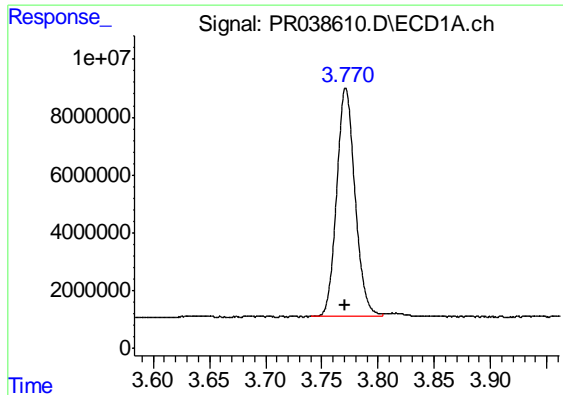
Data Path : Z:\pestpcbsrv\HPCHEM1\ECD_R\Data\PR061019\
 Data File : PR038610.D
 Signal(s) : Signal #1: ECD1A.ch Signal #2: ECD2B.ch
 Acq On : 10 Jun 2019 10:44
 Operator : SM\MA
 Sample : AR1660ICC500
 Misc :
 ALS Vial : 5 Sample Multiplier: 1

Instrument :
 ECD_R
 ClientSampled :
 AR1660ICC500

Integration File signal 1: autoint1.e
 Integration File signal 2: autoint2.e
 Quant Time: Jun 10 14:04:45 2019
 Quant Method : Z:\pestpcbsrv\HPCHEM1\ECD_R\Method\PR061019.M
 Quant Title : GC EXTRACTABLES
 QLast Update : Mon Jun 10 14:04:28 2019
 Response via : Initial Calibration
 Integrator: ChemStation

Volume Inj. : 2 µl
 Signal #1 Phase : ZB-MR1 Signal #2 Phase: ZB-MR2
 Signal #1 Info : 30Mx0.32mmx 0.50µ Signal #2 Info : 30M x 0.32mm x 0.25µm

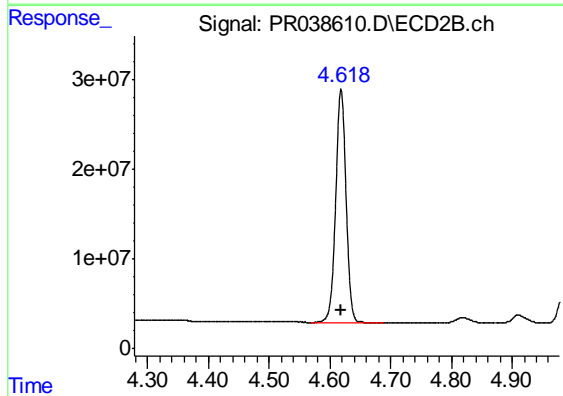




#1 Tetrachloro-m-xylene

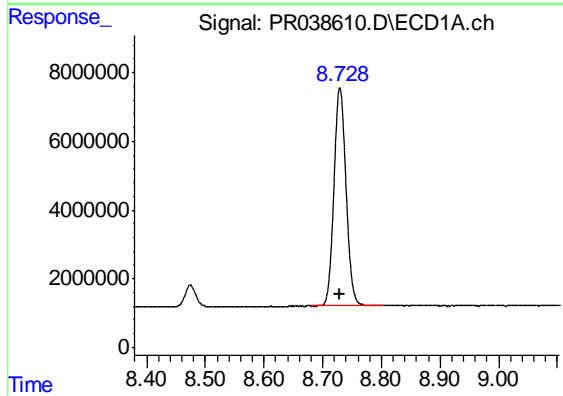
R.T.: 3.771 min
Delta R.T.: 0.000 min
Response: 90183010
Conc: 50.00 ng/ml

Instrument :
ECD_R
ClientSampleId :
AR1660ICC500



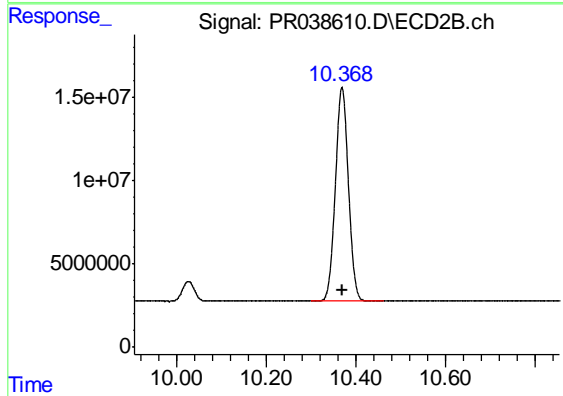
#1 Tetrachloro-m-xylene

R.T.: 4.619 min
Delta R.T.: 0.000 min
Response: 307694933
Conc: 50.00 ng/ml



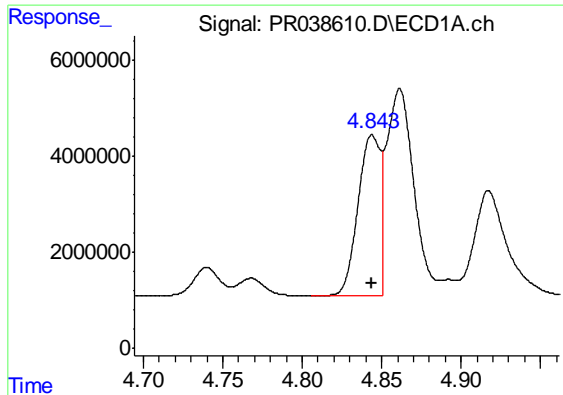
#2 Decachlorobiphenyl

R.T.: 8.729 min
Delta R.T.: 0.000 min
Response: 90855926
Conc: 50.00 ng/ml



#2 Decachlorobiphenyl

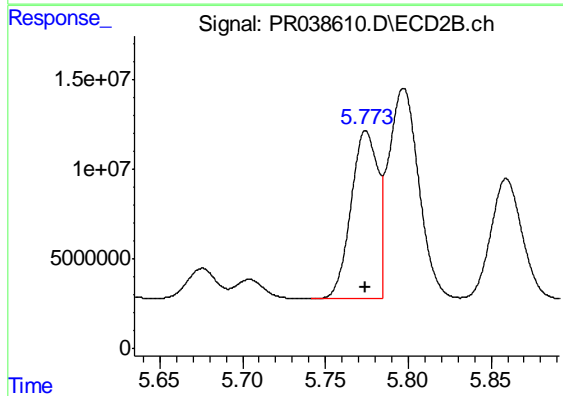
R.T.: 10.368 min
Delta R.T.: 0.000 min
Response: 259993171
Conc: 50.00 ng/ml



#3 AR-1016-1

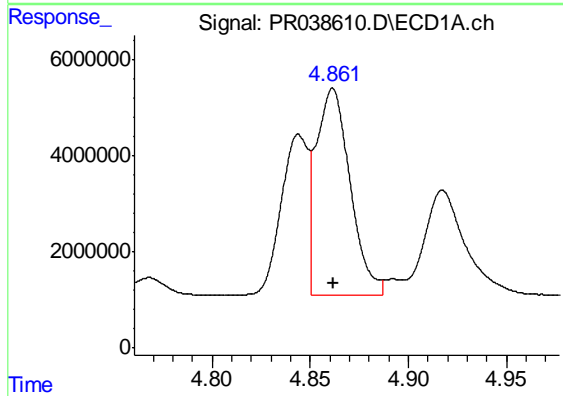
R.T.: 4.844 min
Delta R.T.: 0.000 min
Response: 32220734
Conc: 500.00 ng/ml

Instrument :
ECD_R
ClientSampleId :
AR1660ICC500



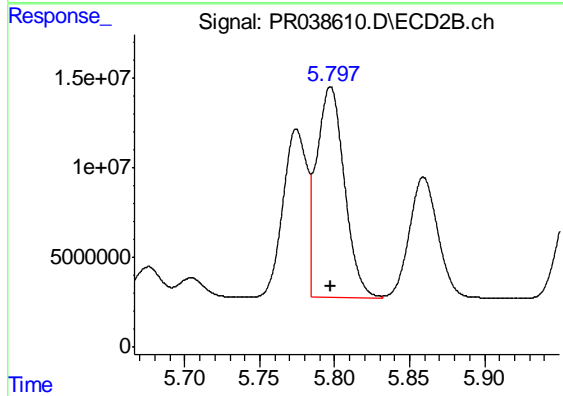
#3 AR-1016-1

R.T.: 5.774 min
Delta R.T.: 0.000 min
Response: 105841155
Conc: 500.00 ng/ml



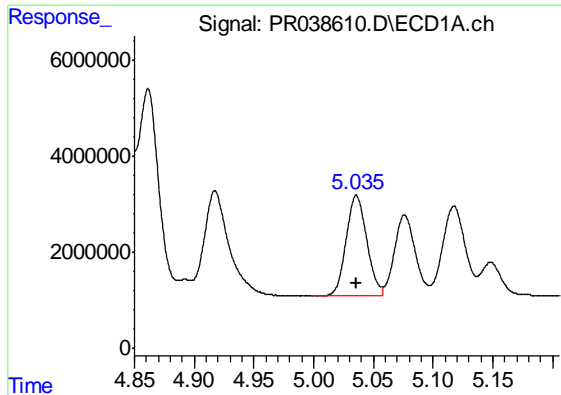
#4 AR-1016-2

R.T.: 4.862 min
Delta R.T.: 0.000 min
Response: 51824934
Conc: 500.00 ng/ml



#4 AR-1016-2

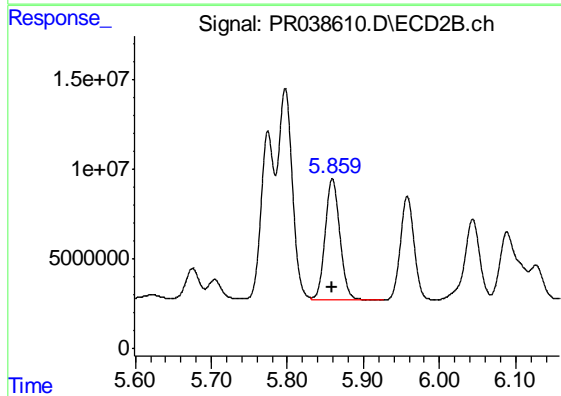
R.T.: 5.797 min
Delta R.T.: 0.000 min
Response: 150949695
Conc: 500.00 ng/ml



#5 AR-1016-3

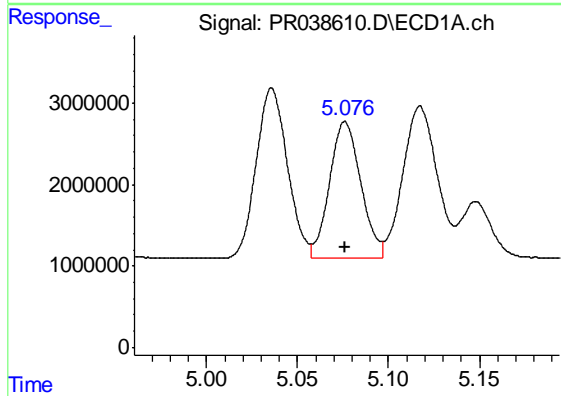
R.T.: 5.036 min
Delta R.T.: 0.000 min
Response: 25006556
Conc: 500.00 ng/ml

Instrument :
ECD_R
ClientSampleId :
AR1660ICC500



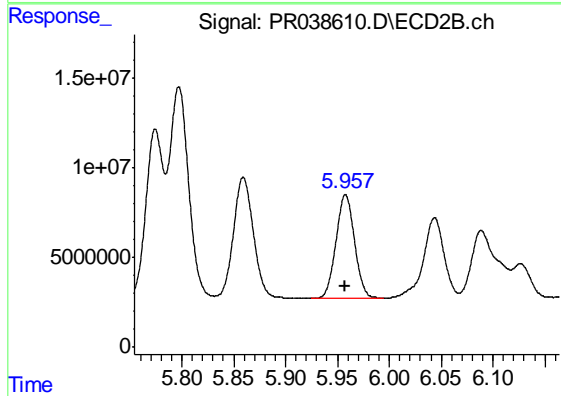
#5 AR-1016-3

R.T.: 5.859 min
Delta R.T.: 0.000 min
Response: 89553689
Conc: 500.00 ng/ml



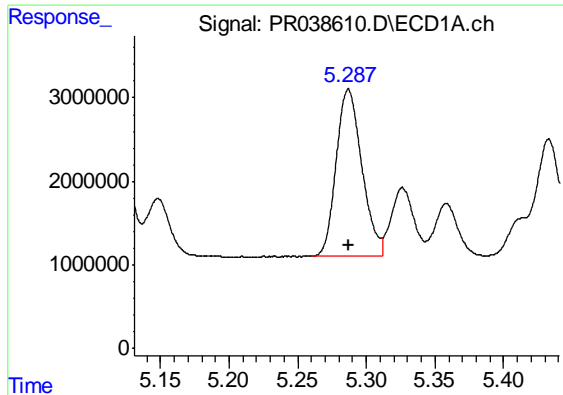
#6 AR-1016-4

R.T.: 5.076 min
Delta R.T.: 0.000 min
Response: 20122690
Conc: 500.00 ng/ml



#6 AR-1016-4

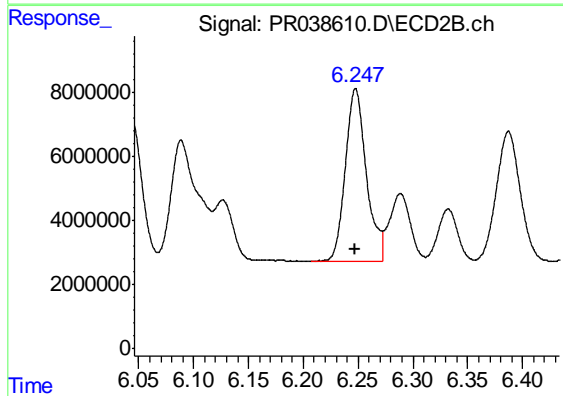
R.T.: 5.958 min
Delta R.T.: 0.000 min
Response: 71737378
Conc: 500.00 ng/ml



#7 AR-1016-5

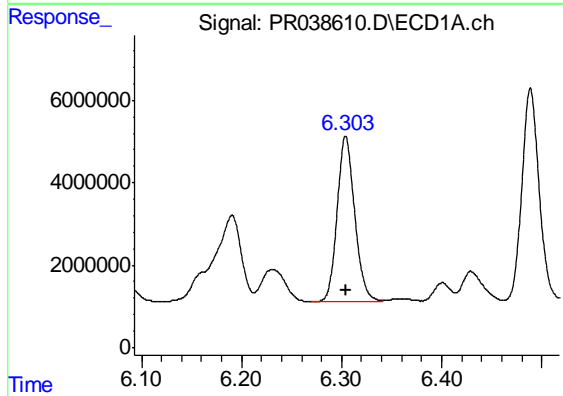
R.T.: 5.287 min
 Delta R.T.: 0.000 min
 Response: 26141152
 Conc: 500.00 ng/ml

Instrument :
 ECD_R
 ClientSampleId :
 AR1660ICC500



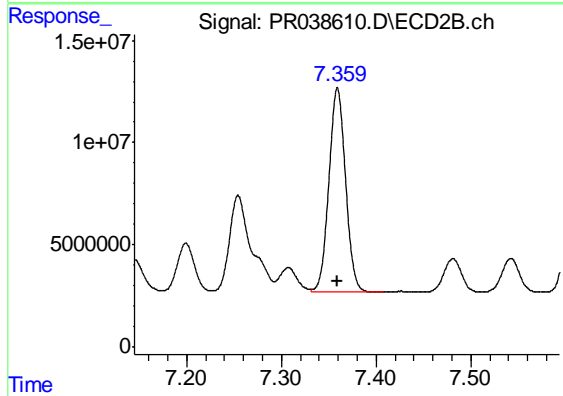
#7 AR-1016-5

R.T.: 6.248 min
 Delta R.T.: 0.000 min
 Response: 71721140
 Conc: 500.00 ng/ml



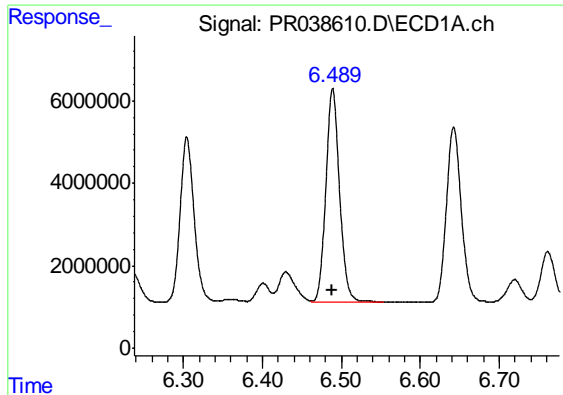
#31 AR-1260-1

R.T.: 6.304 min
 Delta R.T.: 0.000 min
 Response: 49055164
 Conc: 500.00 ng/ml



#31 AR-1260-1

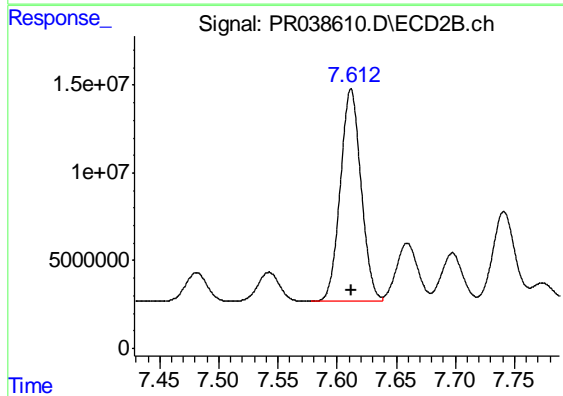
R.T.: 7.359 min
 Delta R.T.: 0.000 min
 Response: 122433520
 Conc: 500.00 ng/ml



#32 AR-1260-2

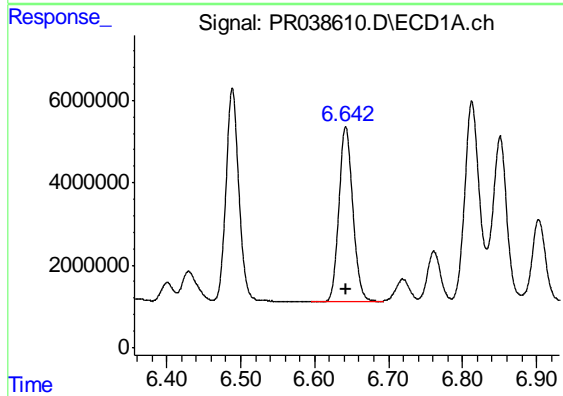
R.T.: 6.489 min
 Delta R.T.: 0.000 min
 Response: 62256319
 Conc: 500.00 ng/ml

Instrument :
 ECD_R
 ClientSampleId :
 AR1660ICC500



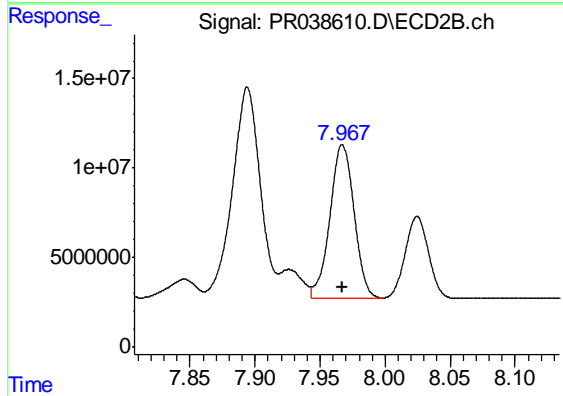
#32 AR-1260-2

R.T.: 7.612 min
 Delta R.T.: 0.000 min
 Response: 148168856
 Conc: 500.00 ng/ml



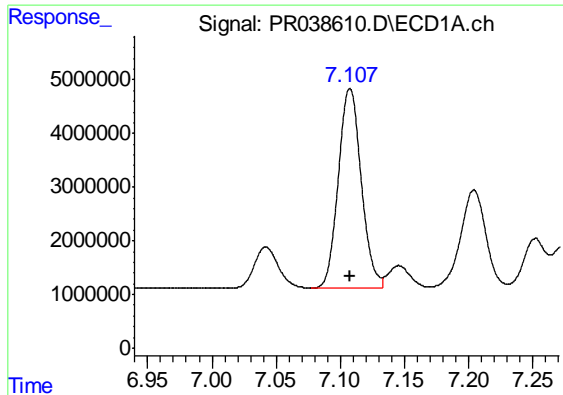
#33 AR-1260-3

R.T.: 6.642 min
 Delta R.T.: 0.000 min
 Response: 55390945
 Conc: 500.00 ng/ml



#33 AR-1260-3

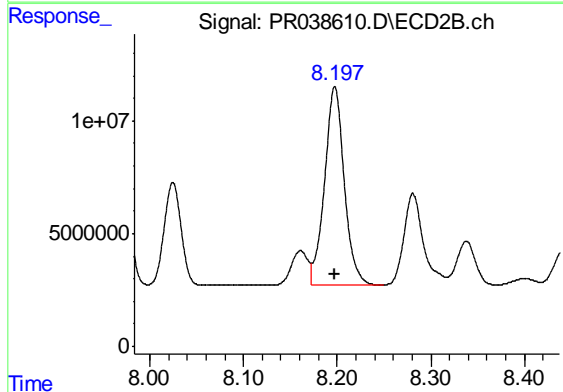
R.T.: 7.967 min
 Delta R.T.: 0.000 min
 Response: 111809045
 Conc: 500.00 ng/ml



#34 AR-1260-4

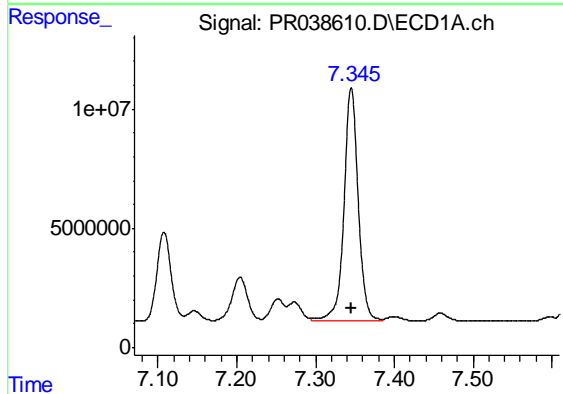
R.T.: 7.108 min
Delta R.T.: 0.000 min
Response: 46305572
Conc: 500.00 ng/ml

Instrument :
ECD_R
ClientSampleId :
AR1660ICC500



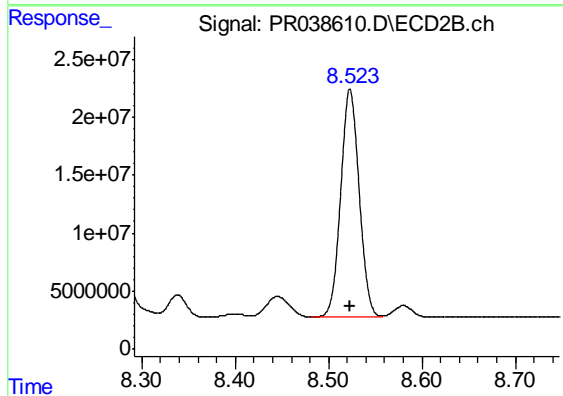
#34 AR-1260-4

R.T.: 8.198 min
Delta R.T.: 0.000 min
Response: 128501093
Conc: 500.00 ng/ml



#35 AR-1260-5

R.T.: 7.345 min
Delta R.T.: 0.000 min
Response: 122687321
Conc: 500.00 ng/ml



#35 AR-1260-5

R.T.: 8.523 min
Delta R.T.: 0.000 min
Response: 271521607
Conc: 500.00 ng/ml