

Data Path : Z:\pestpcbsrv\HPCHEM1\ECD_R\Data\PR061019\
 Data File : PR038623.D
 Signal(s) : Signal #1: ECD1A.ch Signal #2: ECD2B.ch
 Acq On : 10 Jun 2019 13:52
 Operator : SM\MA
 Sample : AR1268ICC500
 Misc :
 ALS Vial : 18 Sample Multiplier: 1

Instrument :
 ECD_R
 ClientSampleId :
 AR1268ICC500

Integration File signal 1: autoint1.e
 Integration File signal 2: autoint2.e
 Quant Time: Jun 10 14:40:51 2019
 Quant Method : Z:\pestpcbsrv\HPCHEM1\ECD_R\Method\PR061019.M
 Quant Title : GC EXTRACTABLES
 QLast Update : Mon Jun 10 14:40:36 2019
 Response via : Initial Calibration
 Integrator: ChemStation

Volume Inj. : 2 µl
 Signal #1 Phase : ZB-MR1 Signal #2 Phase: ZB-MR2
 Signal #1 Info : 30Mx0.32mmx 0.50µ Signal #2 Info : 30M x 0.32mm x 0.25µm

Compound	RT#1	RT#2	Resp#1	Resp#2	ng/ml	ng/ml
----------	------	------	--------	--------	-------	-------

 System Monitoring Compounds

1) SA Tetrachlo...	3.772	4.619	88250818	287.2E6	50.000	50.000
2) SA Decachlor...	8.729	10.369	176.8E6	467.9E6	50.000	50.000

Target Compounds

41) L9 AR-1268-1	7.626	8.840	183.2E6	393.0E6	500.000	500.000
42) L9 AR-1268-2	7.690	8.937	167.7E6	367.3E6	500.000	500.000
43) L9 AR-1268-3	7.894	9.169	137.7E6	304.8E6	500.000	500.000
44) L9 AR-1268-4	8.181	9.604	59128552	135.9E6	500.000	500.000
45) L9 AR-1268-5	8.474	10.025	443.6E6	1085.7E6	500.000	500.000

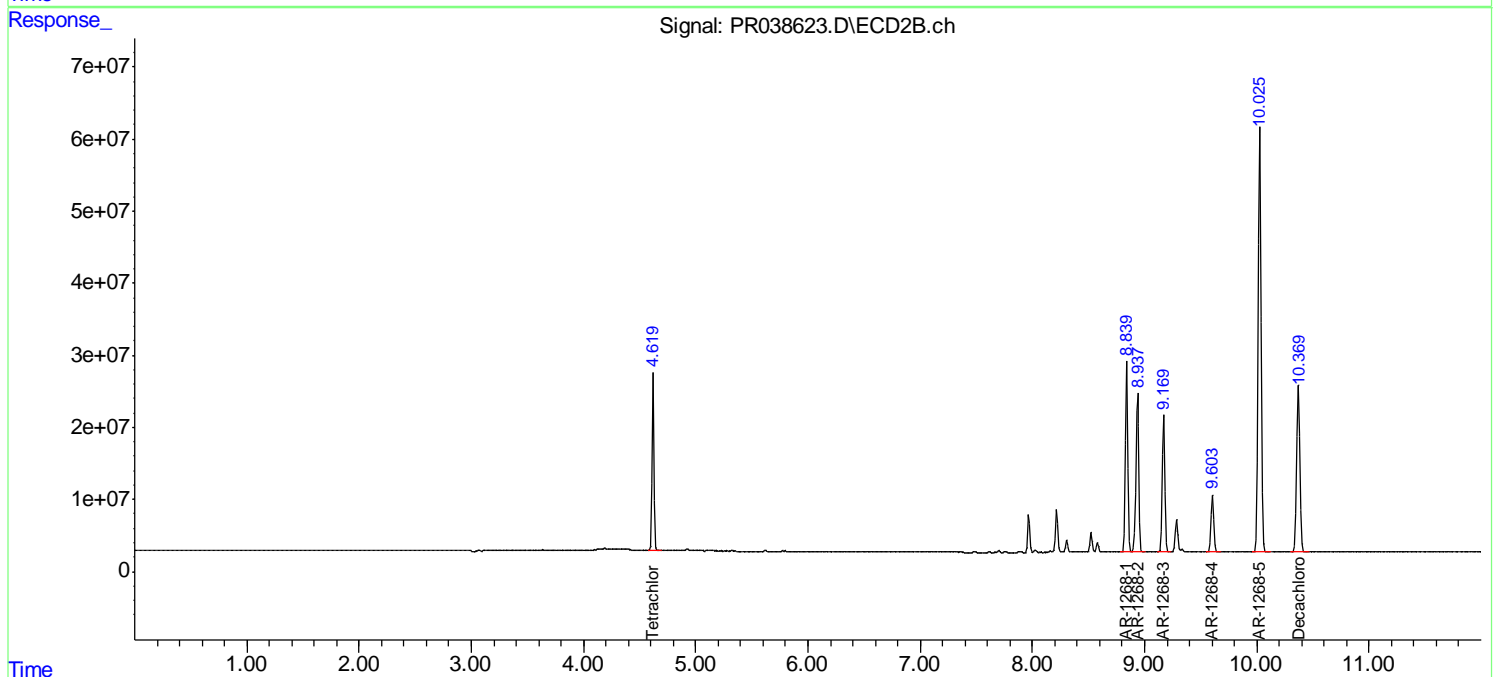
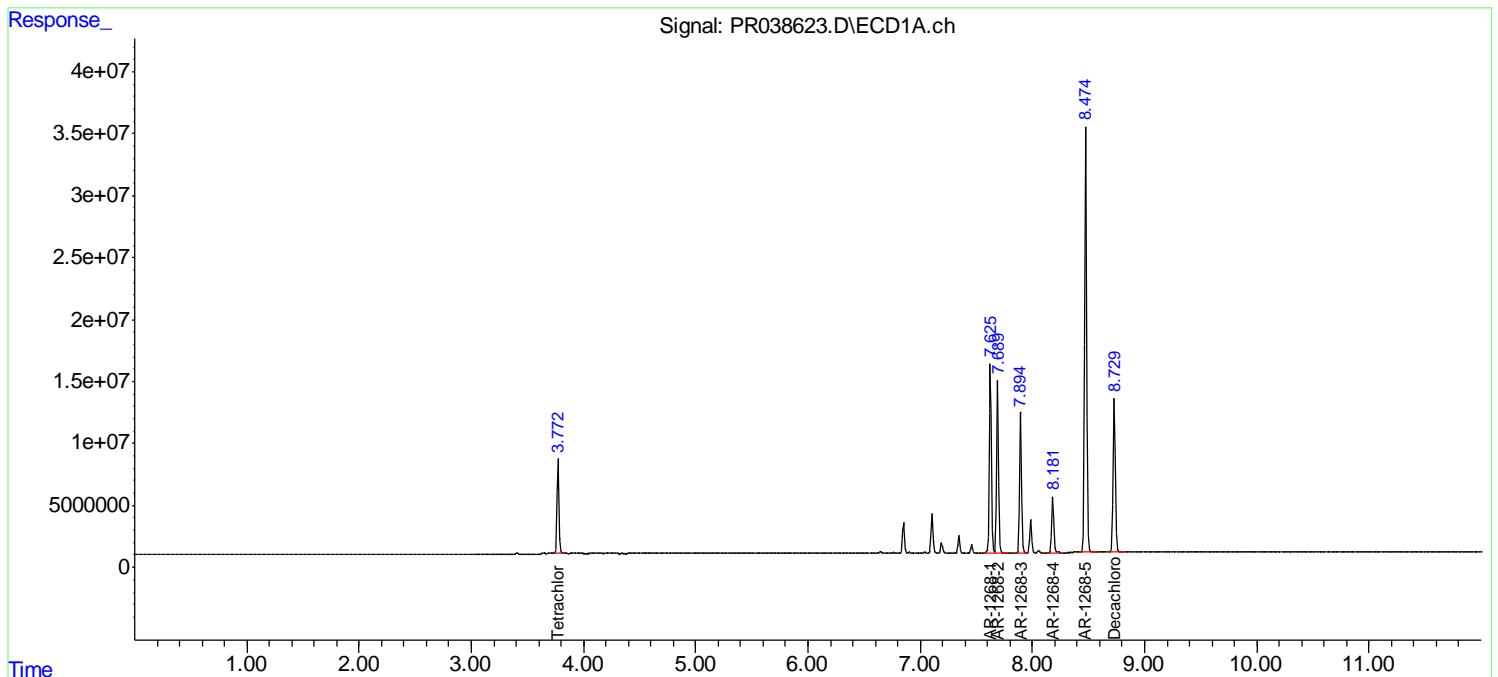
(f)=RT Delta > 1/2 Window (#)=Amounts differ by > 25% (m)=manual int.

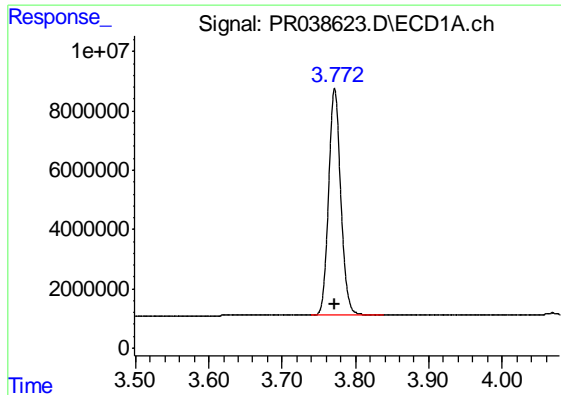
Data Path : Z:\pestpcbsrv\HPCHEM1\ECD_R\Data\PR061019\
 Data File : PR038623.D
 Signal(s) : Signal #1: ECD1A.ch Signal #2: ECD2B.ch
 Acq On : 10 Jun 2019 13:52
 Operator : SM\MA
 Sample : AR1268ICC500
 Misc :
 ALS Vial : 18 Sample Multiplier: 1

Instrument :
 ECD_R
Client Sampled :
 AR1268ICC500

Integration File signal 1: autoint1.e
 Integration File signal 2: autoint2.e
 Quant Time: Jun 10 14:40:51 2019
 Quant Method : Z:\pestpcbsrv\HPCHEM1\ECD_R\Method\PR061019.M
 Quant Title : GC EXTRACTABLES
 QLast Update : Mon Jun 10 14:40:36 2019
 Response via : Initial Calibration
 Integrator: ChemStation

Volume Inj. : 2 µl
 Signal #1 Phase : ZB-MR1 Signal #2 Phase: ZB-MR2
 Signal #1 Info : 30Mx0.32mmx 0.50µ Signal #2 Info : 30M x 0.32mm x 0.25µm

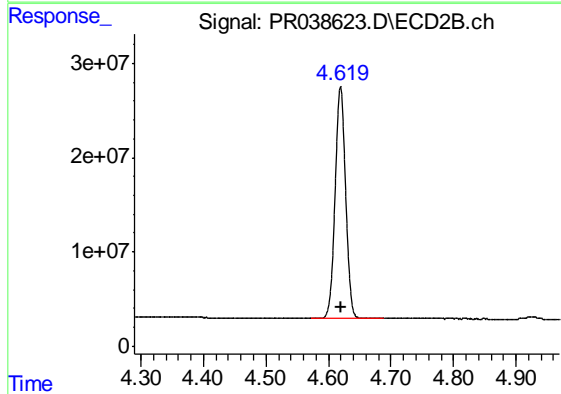




#1 Tetrachloro-m-xylene

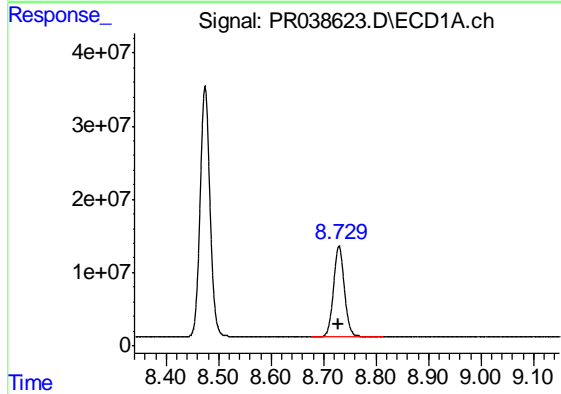
R.T.: 3.772 min
 Delta R.T.: 0.000 min
 Response: 88250818
 Conc: 50.00 ng/ml

Instrument :
 ECD_R
 ClientSampleId :
 AR1268ICC500



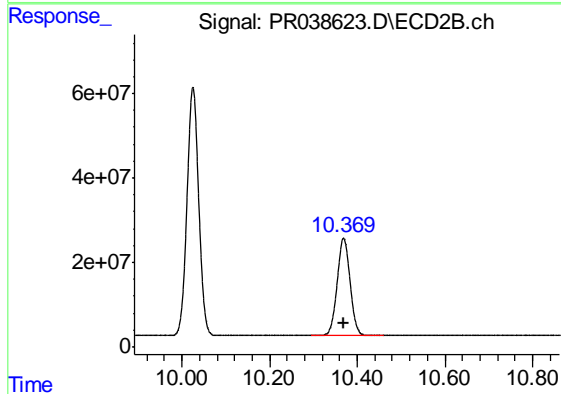
#1 Tetrachloro-m-xylene

R.T.: 4.619 min
 Delta R.T.: 0.000 min
 Response: 287165138
 Conc: 50.00 ng/ml



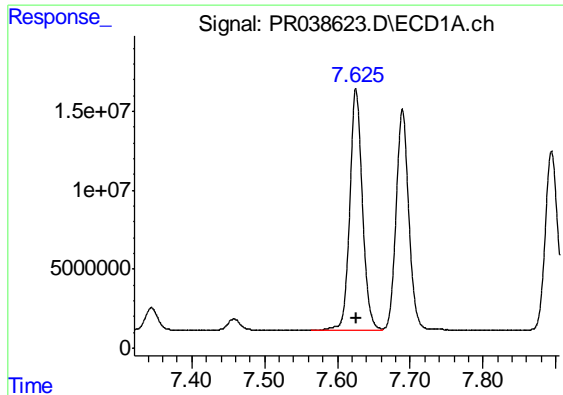
#2 Decachlorobiphenyl

R.T.: 8.729 min
 Delta R.T.: 0.000 min
 Response: 176774716
 Conc: 50.00 ng/ml



#2 Decachlorobiphenyl

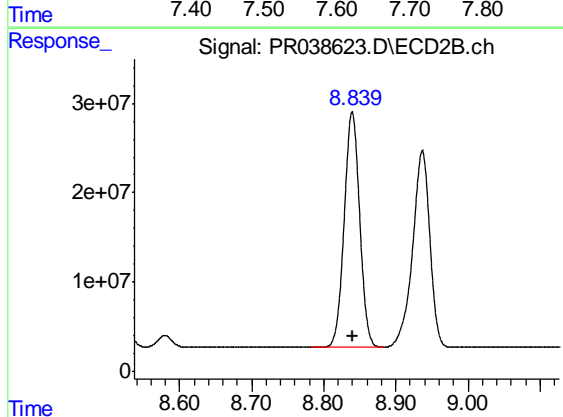
R.T.: 10.369 min
 Delta R.T.: 0.000 min
 Response: 467947927
 Conc: 50.00 ng/ml



#41 AR-1268-1

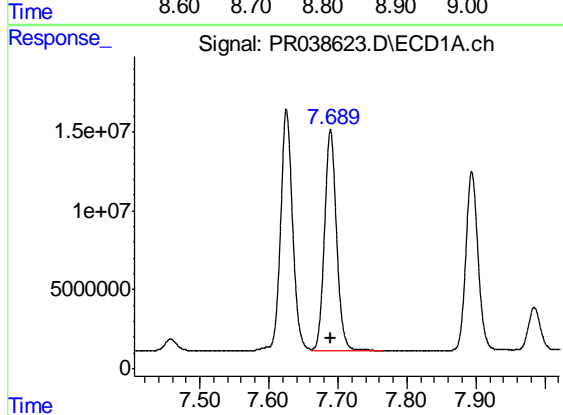
R.T.: 7.626 min
Delta R.T.: 0.000 min
Response: 183224689
Conc: 500.00 ng/ml

Instrument :
ECD_R
ClientSampleId :
AR1268ICC500



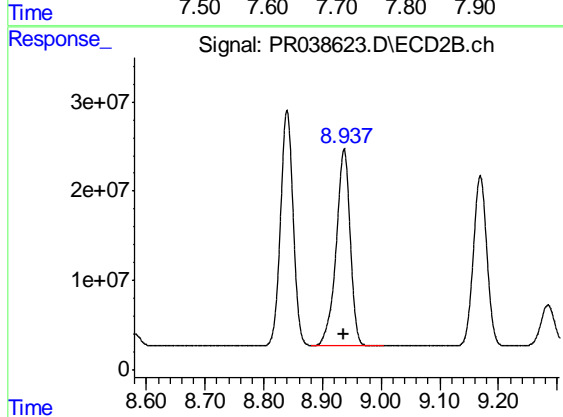
#41 AR-1268-1

R.T.: 8.840 min
Delta R.T.: 0.000 min
Response: 393018151
Conc: 500.00 ng/ml



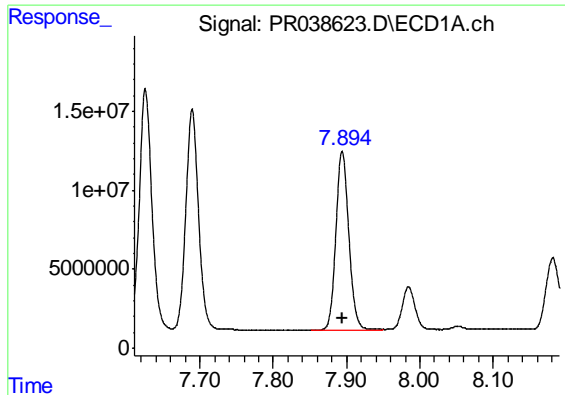
#42 AR-1268-2

R.T.: 7.690 min
Delta R.T.: 0.000 min
Response: 167733162
Conc: 500.00 ng/ml



#42 AR-1268-2

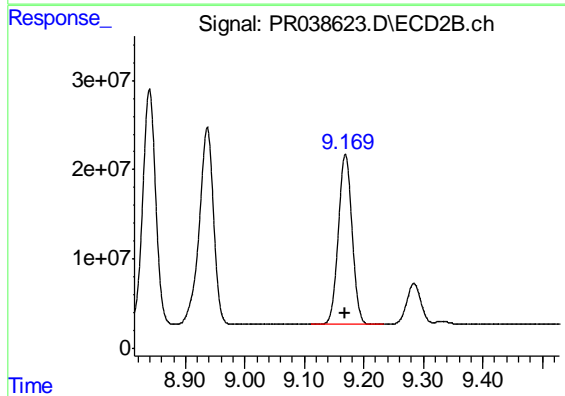
R.T.: 8.937 min
Delta R.T.: 0.000 min
Response: 367305585
Conc: 500.00 ng/ml



#43 AR-1268-3

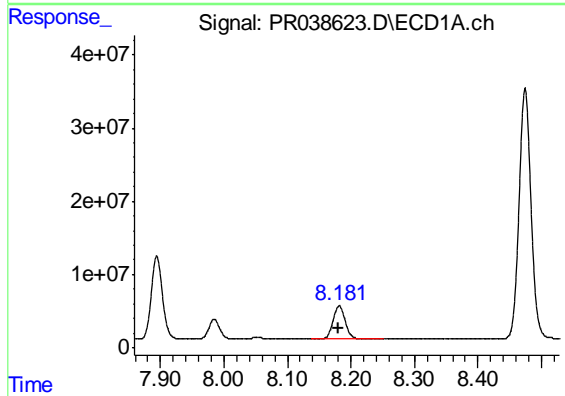
R.T.: 7.894 min
 Delta R.T.: 0.000 min
 Response: 137660544
 Conc: 500.00 ng/ml

Instrument :
 ECD_R
 ClientSampleId :
 AR1268ICC500



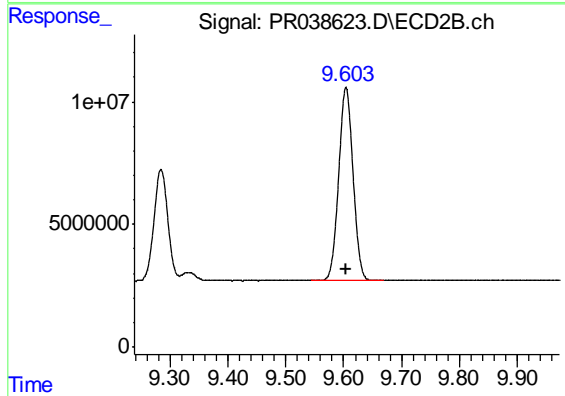
#43 AR-1268-3

R.T.: 9.169 min
 Delta R.T.: 0.000 min
 Response: 304846682
 Conc: 500.00 ng/ml



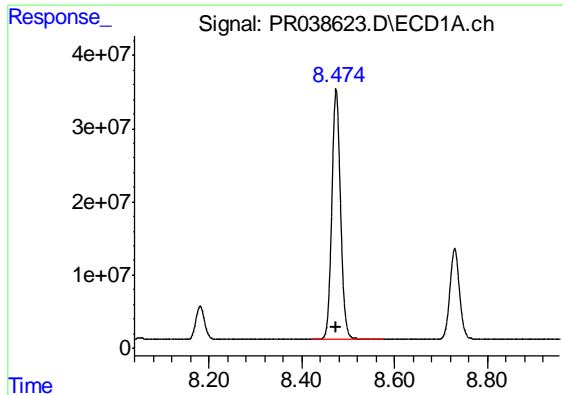
#44 AR-1268-4

R.T.: 8.181 min
 Delta R.T.: 0.000 min
 Response: 59128552
 Conc: 500.00 ng/ml



#44 AR-1268-4

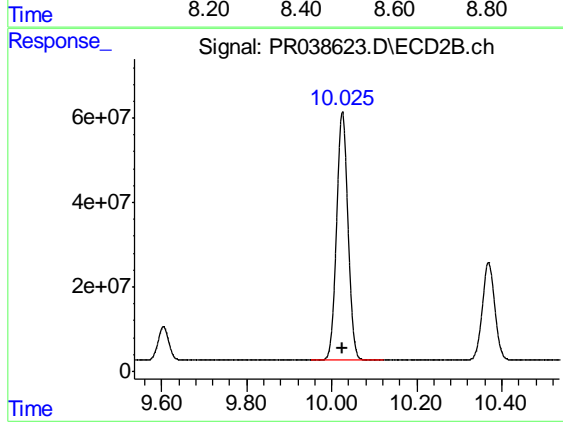
R.T.: 9.604 min
 Delta R.T.: 0.000 min
 Response: 135908834
 Conc: 500.00 ng/ml



#45 AR-1268-5

R.T.: 8.474 min
Delta R.T.: 0.000 min
Response: 443620059
Conc: 500.00 ng/ml

Instrument :
ECD_R
ClientSampleId :
AR1268ICC500



#45 AR-1268-5

R.T.: 10.025 min
Delta R.T.: 0.000 min
Response: 1085702786
Conc: 500.00 ng/ml