

Data Path : Z:\pestpcbsrv\HPCHEM1\ECD\_R\Data\PR061019\  
 Data File : PR038632.D  
 Signal(s) : Signal #1: ECD1A.ch Signal #2: ECD2B.ch  
 Acq On : 10 Jun 2019 17:31  
 Operator : SM\MA  
 Sample : I.BLK  
 Misc :  
 ALS Vial : 2 Sample Multiplier: 1

Instrument :  
 ECD\_R  
 ClientSampleId :  
 I.BLK

Manual Integrations  
 APPROVED

Ankita  
 6/11/2019 8:53:22 AM

Integration File signal 1: autoint1.e  
 Integration File signal 2: autoint2.e  
 Quant Time: Jun 11 04:18:33 2019  
 Quant Method : Z:\pestpcbsrv\HPCHEM1\ECD\_R\Method\PR061019.M  
 Quant Title : GC EXTRACTABLES  
 QLast Update : Tue Jun 11 04:05:19 2019  
 Response via : Initial Calibration  
 Integrator: ChemStation

Volume Inj. : 2 µl  
 Signal #1 Phase : ZB-MR1 Signal #2 Phase: ZB-MR2  
 Signal #1 Info : 30Mx0.32mmx 0.50µ Signal #2 Info : 30M x 0.32mm x 0.25µm

Compound	RT#1	RT#2	Resp#1	Resp#2	ng/ml	ng/ml
----------	------	------	--------	--------	-------	-------

-----  
 System Monitoring Compounds

1) SA Tetrachlo...	3.773	4.621	37891861	102.6E6	22.769	17.971
2) SA Decachlor...	8.732	10.372	27304269	71820405	15.352m	14.033

Target Compounds  
 -----

(f)=RT Delta > 1/2 Window (#)=Amounts differ by > 25% (m)=manual int.

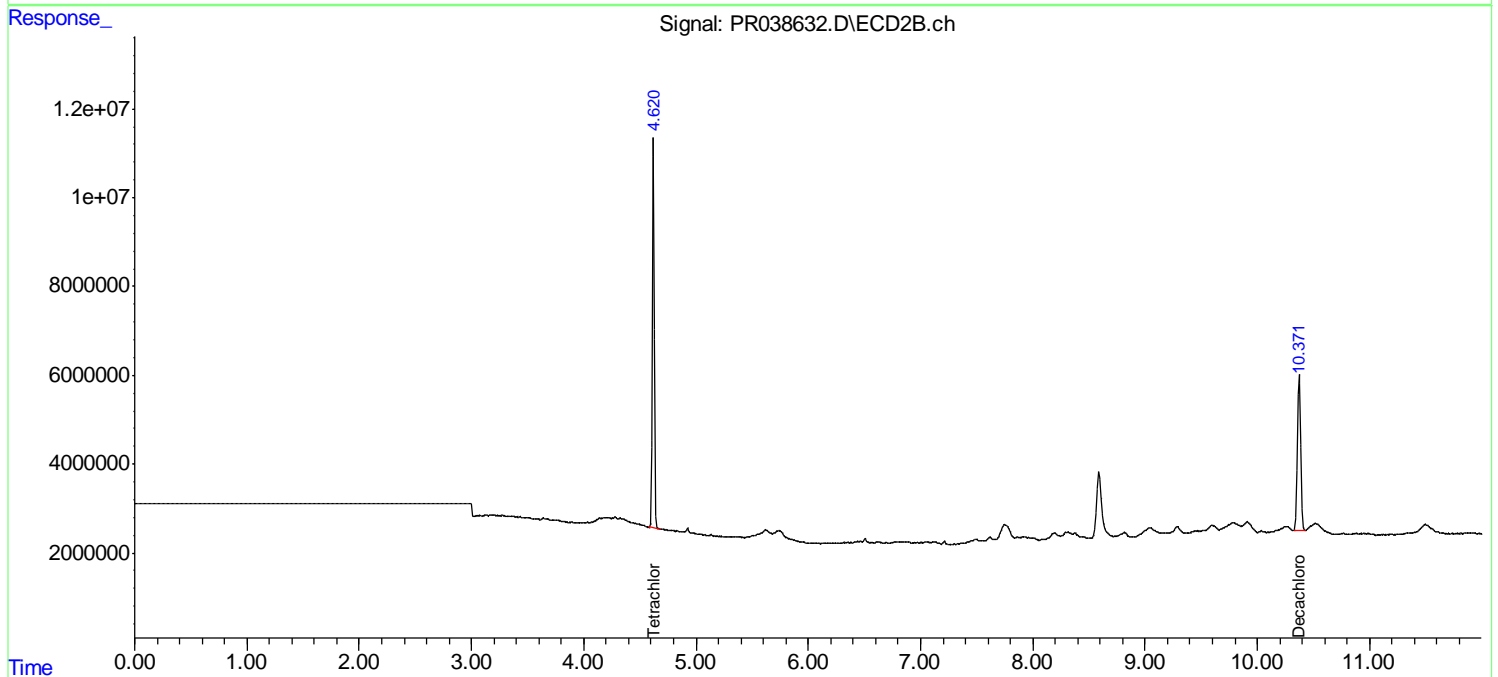
Data Path : Z:\pestpcbsrv\HPCHEM1\ECD\_R\Data\PR061019\  
 Data File : PR038632.D  
 Signal(s) : Signal #1: ECD1A.ch Signal #2: ECD2B.ch  
 Acq On : 10 Jun 2019 17:31  
 Operator : SM\MA  
 Sample : I.BLK  
 Misc :  
 ALS Vial : 2 Sample Multiplier: 1

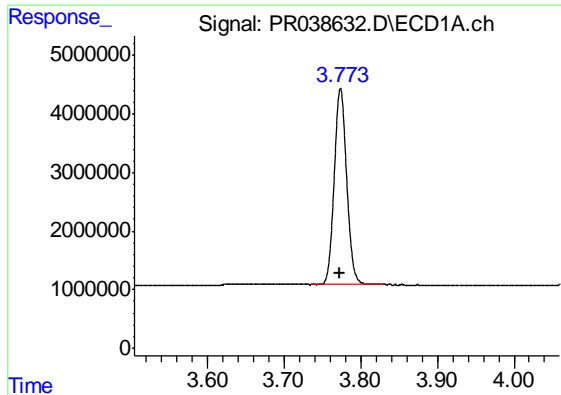
**Instrument :**  
 ECD\_R  
**Client Sampled :**  
 I.BLK

**Manual Integrations**  
**APPROVED**  
 Ankita  
 6/11/2019 8:53:22 AM

Integration File signal 1: autoint1.e  
 Integration File signal 2: autoint2.e  
 Quant Time: Jun 11 04:18:33 2019  
 Quant Method : Z:\pestpcbsrv\HPCHEM1\ECD\_R\Method\PR061019.M  
 Quant Title : GC EXTRACTABLES  
 QLast Update : Tue Jun 11 04:05:19 2019  
 Response via : Initial Calibration  
 Integrator: ChemStation

Volume Inj. : 2 µl  
 Signal #1 Phase : ZB-MR1 Signal #2 Phase: ZB-MR2  
 Signal #1 Info : 30Mx0.32mmx 0.50µ Signal #2 Info : 30M x 0.32mm x 0.25µm





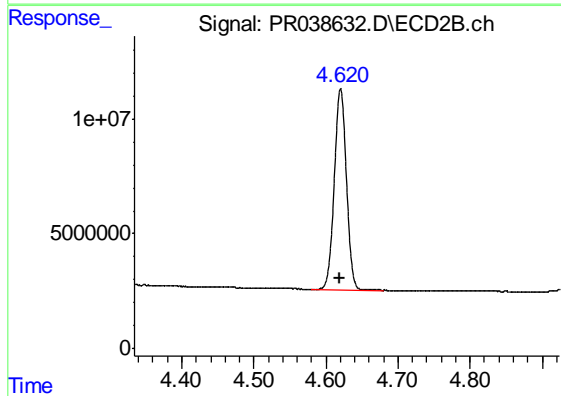
#1 Tetrachloro-m-xylene

R.T.: 3.773 min  
Delta R.T.: 0.002 min  
Response: 37891861  
Conc: 22.77 ng/ml

Instrument :  
ECD\_R  
ClientSampled :  
I.BLK

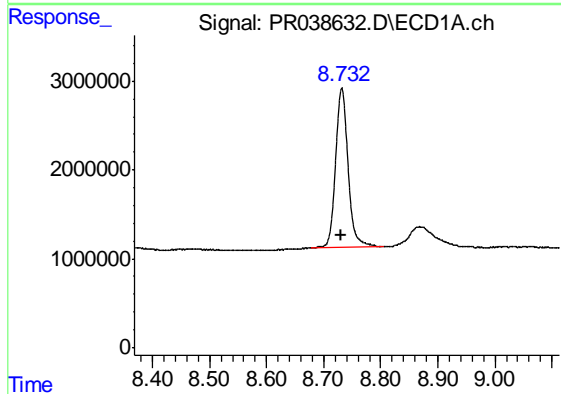
Manual Integrations  
APPROVED

Ankita  
6/11/2019 8:53:22 AM



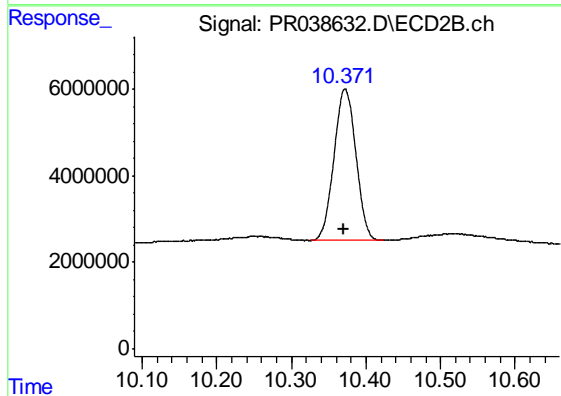
#1 Tetrachloro-m-xylene

R.T.: 4.621 min  
Delta R.T.: 0.001 min  
Response: 102587663  
Conc: 17.97 ng/ml



#2 Decachlorobiphenyl

R.T.: 8.732 min  
Delta R.T.: 0.002 min  
Response: 27304269  
Conc: 15.35 ng/ml m



#2 Decachlorobiphenyl

R.T.: 10.372 min  
Delta R.T.: 0.002 min  
Response: 71820405  
Conc: 14.03 ng/ml