

Data Path : Z:\pestpcbsrv\HPCHEM1\ECD_R\Data\PR061223\
 Data File : PR061788.D
 Signal(s) : Signal #1: ECD1A.ch Signal #2: ECD2B.ch
 Acq On : 12 Jun 2023 17:47
 Operator : YP\AJ
 Sample : 03078-13
 Misc :
 ALS Vial : 47 Sample Multiplier: 1

Instrument :
 ECD_R
 ClientSampleId :

Integration File signal 1: autoint1.e
 Integration File signal 2: autoint2.e
 Quant Time: Jun 12 22:27:13 2023
 Quant Method : Z:\pestpcbsrv\HPCHEM1\ECD_R\Method\PR060623CLP.M
 Quant Title : GC EXTRACTABLES
 QLast Update : Wed Jun 07 04:58:45 2023
 Response via : Initial Calibration
 Integrator: ChemStation

Volume Inj. : 1 µl
 Signal #1 Phase : ZB MR1 Signal #2 Phase: ZB MR2
 Signal #1 Info : 30Mx0.32mmx 0.5µm Signal #2 Info : 30M x 0.32mm x 0.25µm

Compound	RT#1	RT#2	Resp#1	Resp#2	ng/ml	ng/ml

System Monitoring Compounds						
1) SA Tetrachlo...	3.692	2.962	45769967	57694497	18.655	19.701
2) SA Decachlor...	9.628	8.251	44750741	99161013	32.802	27.520
Target Compounds						
3) L1 AR-1016-1	4.917	4.082	1609913	504305	22.183	5.028 #
4) L1 AR-1016-2	4.917	4.106	1609913	1392812	15.532	10.115 #
5) L1 AR-1016-3	5.017	4.294	390812	796699	5.940	10.285 #
6) L1 AR-1016-4	5.106	4.355	375747	1026124	6.950	16.598 #
7) L1 AR-1016-5	0.000	4.541	0	2911664	N.D.	35.799 #
8) L2 AR-1221-1	3.899	3.195	670674	21533	22.106	0.564 #
9) L2 AR-1221-2	4.005	3.267	588441	1083447	27.614	39.462 #
10) L2 AR-1221-3	0.000	3.353	0	201828	N.D.	2.317 #
11) L3 AR-1232-1	0.000	3.353	0	201828	N.D.	2.766 #
12) L3 AR-1232-2	4.630	4.106	1253581	1392812	45.350	21.399 #
13) L3 AR-1232-3	4.917	4.294	1609913	796699	33.471	21.932 #
14) L3 AR-1232-4	5.106	4.355	375747	1026124	15.040	31.941 #
15) L3 AR-1232-5	0.000	4.541	0	2911664	N.D.	79.760 #
16) L4 AR-1242-1	4.917	4.082	1609913	504305	25.919	5.954 #
17) L4 AR-1242-2	4.917	4.106	1609913	1392812	18.598	11.980 #
18) L4 AR-1242-3	5.017	4.294	390812	796699	6.836	12.121 #
19) L4 AR-1242-4	5.106	4.355	375747	1026124	8.157	16.061 #
20) L4 AR-1242-5	5.901	4.929	548656	3307057	12.547	40.096 #
21) L5 AR-1248-1	4.917	4.082	1609913	504305	34.982	7.718 #
22) L5 AR-1248-2	0.000	4.355	0	1026124	N.D.	11.096 #
23) L5 AR-1248-3	0.000	4.355	0	1026124	N.D.	10.812 #
24) L5 AR-1248-4	5.889	4.541	785293	2911664	10.148	25.511 #
25) L5 AR-1248-5	5.901	4.954	548656	4786530	7.373	41.964 #
26) L6 AR-1254-1	5.835	4.929	1687959	3307057	19.770	18.909
27) L6 AR-1254-2	6.068	5.087	463324	2742151	3.696	17.983 #
28) L6 AR-1254-3	6.450	5.514	1725553	1390365	13.982	5.483 #
29) L6 AR-1254-4	6.817f	5.757	1063772	760608	12.206	4.619 #
30) L6 AR-1254-5	7.256	6.209	3220810	6733003	34.918	27.172
31) L7 AR-1260-1	6.645	5.655	619195	3145510	6.596	18.399 #
32) L7 AR-1260-2	6.918	5.859	2366122	2209755	22.591	10.608 #
33) L7 AR-1260-3	7.319	6.020	462121	1362879	6.053	6.665
34) L7 AR-1260-4	7.559	6.527	1899891	1347997	22.250	7.639 #
35) L7 AR-1260-5	7.894	6.794	2325585	4155371	15.312	10.006 #
36) L8 AR-1262-1	7.319	6.252	462121	1568625	4.164	6.303 #
37) L8 AR-1262-2	7.894	6.794	2325585	4155371	13.269	8.884 #
38) L8 AR-1262-3	0.000	7.105	0	3019195	N.D.	16.073 #
39) L8 AR-1262-4	8.284	7.166	899124	3581319	15.565	10.072 #
40) L8 AR-1262-5	8.870f	7.709	133659	1476209	2.198	8.370 #
41) L9 AR-1268-1	0.000	7.105	0	3019195	N.D.	6.898 #

Data Path : Z:\pestpcbsrv\HPCHEM1\ECD_R\Data\PR061223\
 Data File : PR061788.D
 Signal(s) : Signal #1: ECD1A.ch Signal #2: ECD2B.ch
 Acq On : 12 Jun 2023 17:47
 Operator : YP\AJ
 Sample : 03078-13
 Misc :
 ALS Vial : 47 Sample Multiplier: 1

Instrument :
 ECD_R
 ClientSampleId :

Integration File signal 1: autoint1.e
 Integration File signal 2: autoint2.e
 Quant Time: Jun 12 22:27:13 2023
 Quant Method : Z:\pestpcbsrv\HPCHEM1\ECD_R\Method\PR060623CLP.M
 Quant Title : GC EXTRACTABLES
 QLast Update : Wed Jun 07 04:58:45 2023
 Response via : Initial Calibration
 Integrator: ChemStation

Volume Inj. : 1 µl
 Signal #1 Phase : ZB MR1 Signal #2 Phase: ZB MR2
 Signal #1 Info : 30Mx0.32mmx 0.5µm Signal #2 Info : 30M x 0.32mm x 0.25µm

	Compound	RT#1	RT#2	Resp#1	Resp#2	ng/ml	ng/ml
42)	L9 AR-1268-2	8.284	7.166	899124	3581319	5.751	8.871 #
43)	L9 AR-1268-3	0.000	7.406	0	993319	N.D.	2.833 #
44)	L9 AR-1268-4	8.870f	7.709	133659	1476209	2.453	9.394 #
45)	L9 AR-1268-5	9.317	8.002	633203	930969	1.604	0.820 #

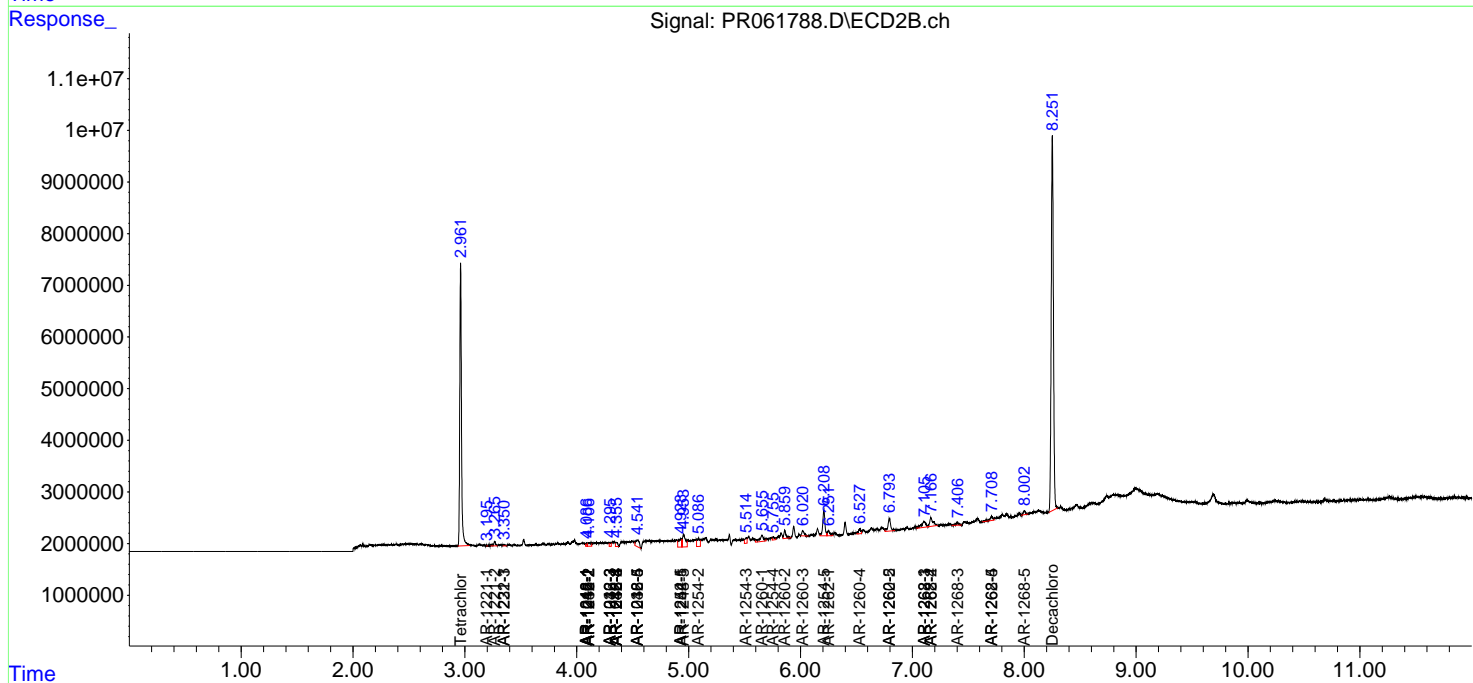
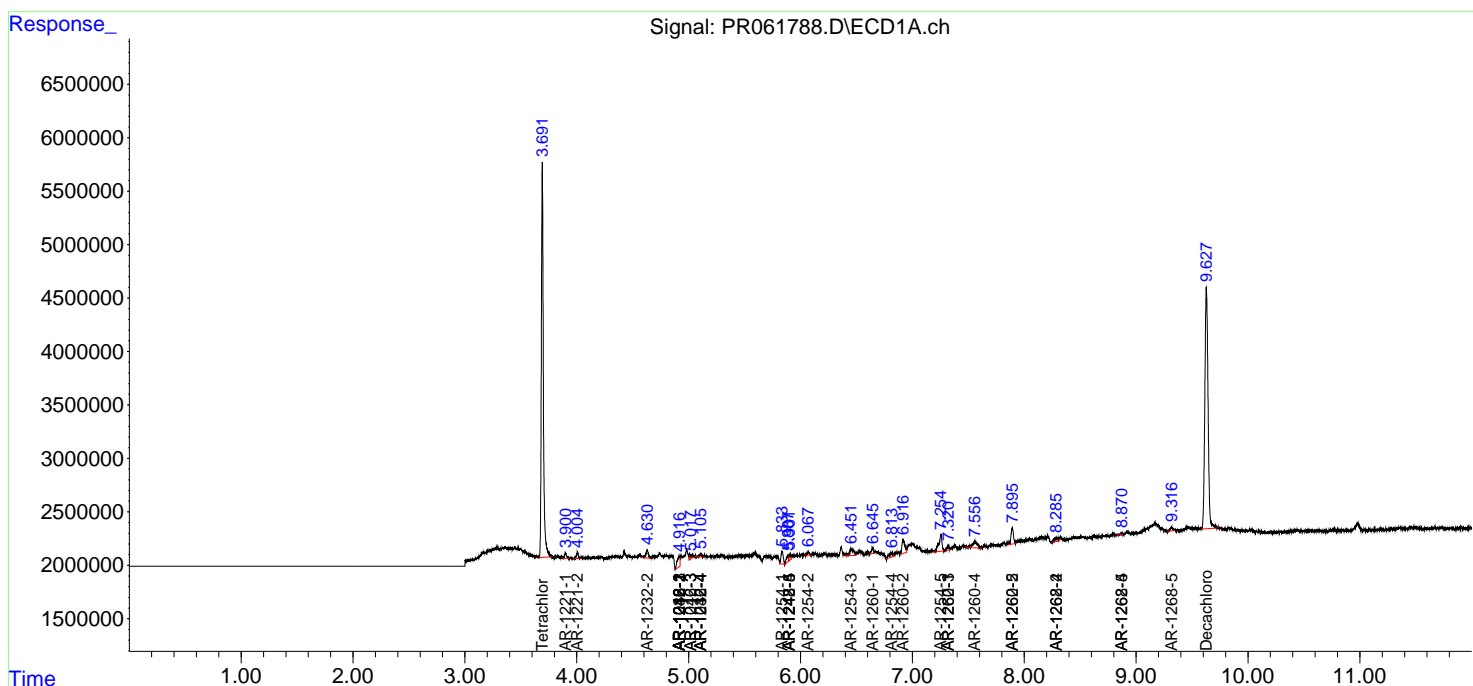
(f)=RT Delta > 1/2 Window (#)=Amounts differ by > 25% (m)=manual int.

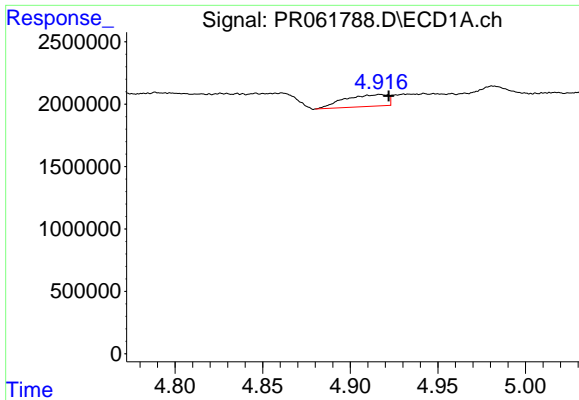
Data Path : Z:\pestpcbsrv\HPCHEM1\ECD_R\Data\PR061223\
 Data File : PR061788.D
 Signal(s) : Signal #1: ECD1A.ch Signal #2: ECD2B.ch
 Acq On : 12 Jun 2023 17:47
 Operator : YP\AJ
 Sample : 03078-13
 Misc :
 ALS Vial : 47 Sample Multiplier: 1

Instrument :
 ECD_R
 ClientSampleId :

Integration File signal 1: autoint1.e
 Integration File signal 2: autoint2.e
 Quant Time: Jun 12 22:27:13 2023
 Quant Method : Z:\pestpcbsrv\HPCHEM1\ECD_R\Method\PR060623CLP.M
 Quant Title : GC EXTRACTABLES
 QLast Update : Wed Jun 07 04:58:45 2023
 Response via : Initial Calibration
 Integrator: ChemStation

Volume Inj. : 1 µl
 Signal #1 Phase : ZB MR1 Signal #2 Phase: ZB MR2
 Signal #1 Info : 30Mx0.32mmx 0.5µm Signal #2 Info : 30M x 0.32mm x 0.25µm

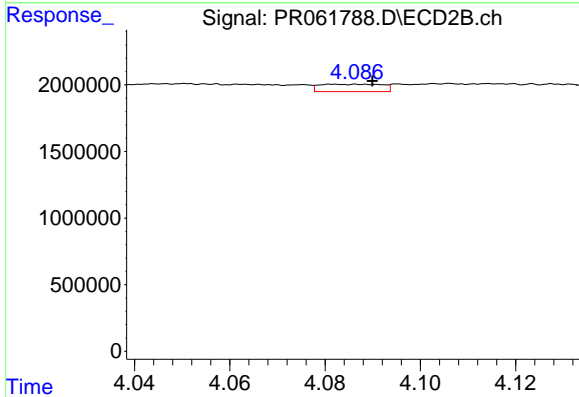




#3 AR-1016-1

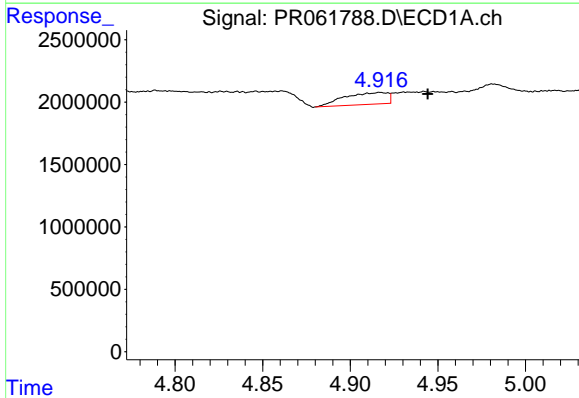
R.T.: 4.917 min
 Delta R.T.: -0.005 min
 Response: 1609913
 Conc: 22.18 ng/ml

Instrument :
 ECD_R
 ClientSampleId :



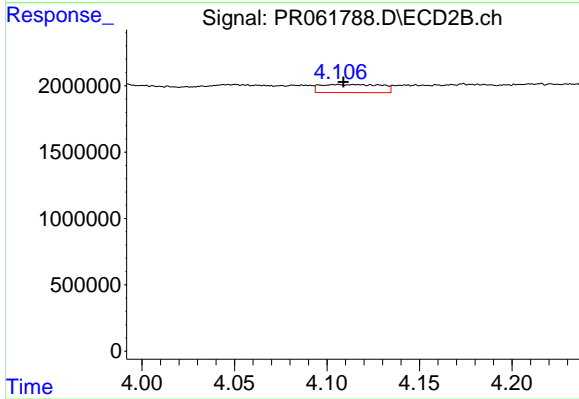
#3 AR-1016-1

R.T.: 4.082 min
 Delta R.T.: -0.008 min
 Response: 504305
 Conc: 5.03 ng/ml



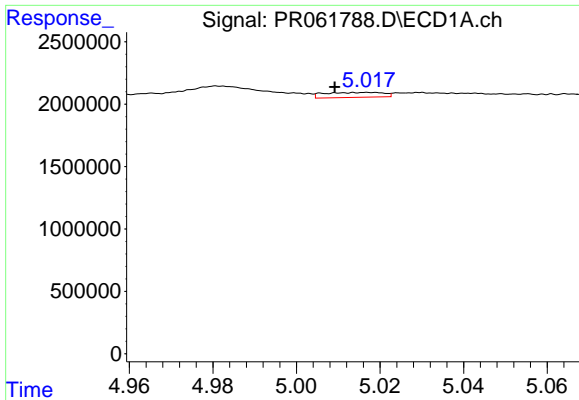
#4 AR-1016-2

R.T.: 4.917 min
 Delta R.T.: -0.027 min
 Response: 1609913
 Conc: 15.53 ng/ml



#4 AR-1016-2

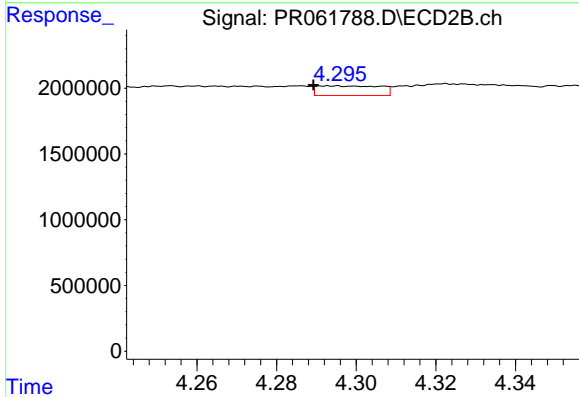
R.T.: 4.106 min
 Delta R.T.: -0.003 min
 Response: 1392812
 Conc: 10.11 ng/ml



#5 AR-1016-3

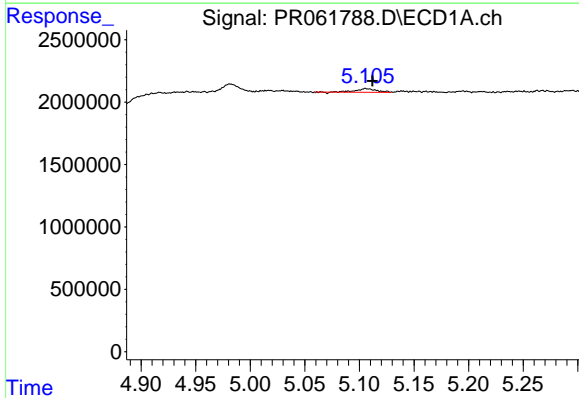
R.T.: 5.017 min
 Delta R.T.: 0.008 min
 Response: 390812
 Conc: 5.94 ng/ml

Instrument :
 ECD_R
 ClientSampleId :



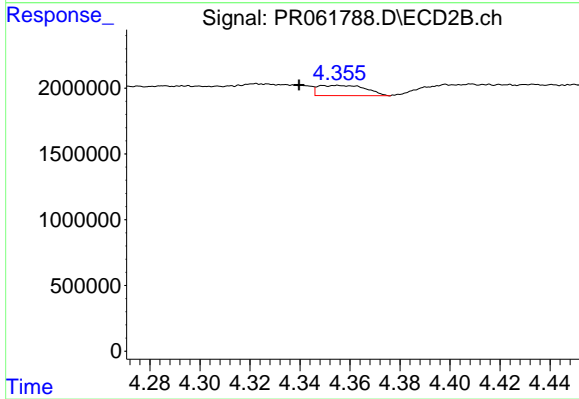
#5 AR-1016-3

R.T.: 4.294 min
 Delta R.T.: 0.005 min
 Response: 796699
 Conc: 10.28 ng/ml



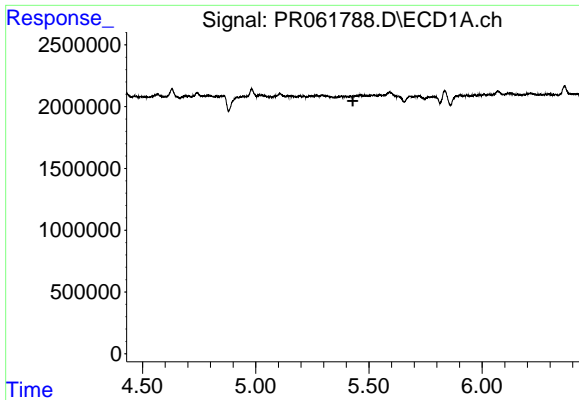
#6 AR-1016-4

R.T.: 5.106 min
 Delta R.T.: -0.006 min
 Response: 375747
 Conc: 6.95 ng/ml



#6 AR-1016-4

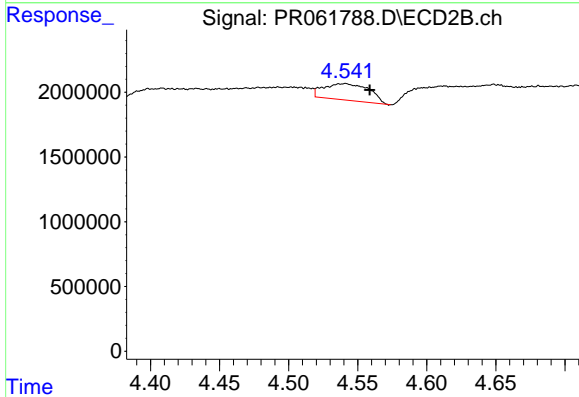
R.T.: 4.355 min
 Delta R.T.: 0.016 min
 Response: 1026124
 Conc: 16.60 ng/ml



#7 AR-1016-5

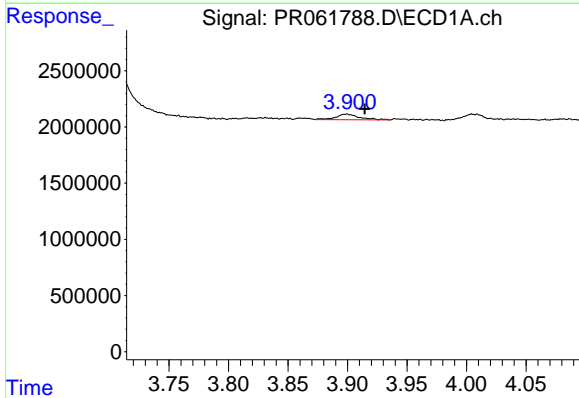
R.T.: 0.000 min
 Exp R.T.: 5.429 min
 Response: 0
 Conc: N.D.

Instrument :
 ECD_R
 ClientSampleId :



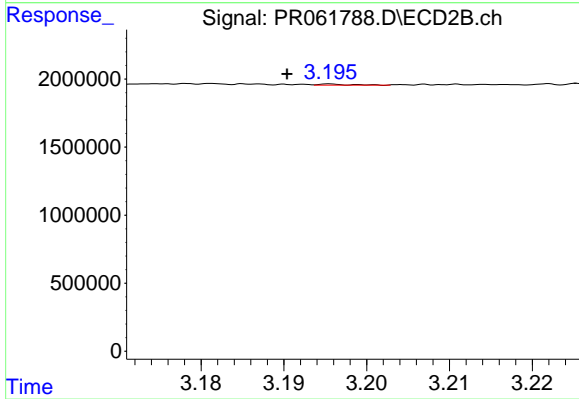
#7 AR-1016-5

R.T.: 4.541 min
 Delta R.T.: -0.018 min
 Response: 2911664
 Conc: 35.80 ng/ml



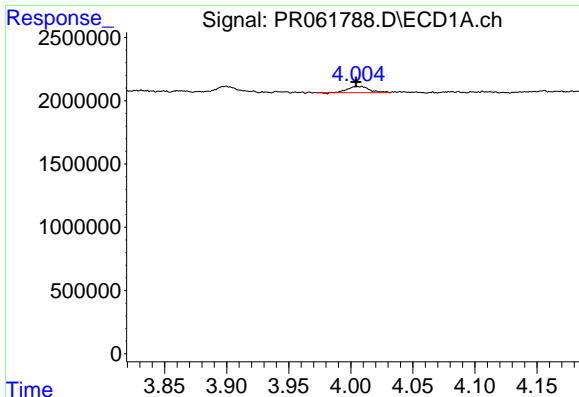
#8 AR-1221-1

R.T.: 3.899 min
 Delta R.T.: -0.016 min
 Response: 670674
 Conc: 22.11 ng/ml



#8 AR-1221-1

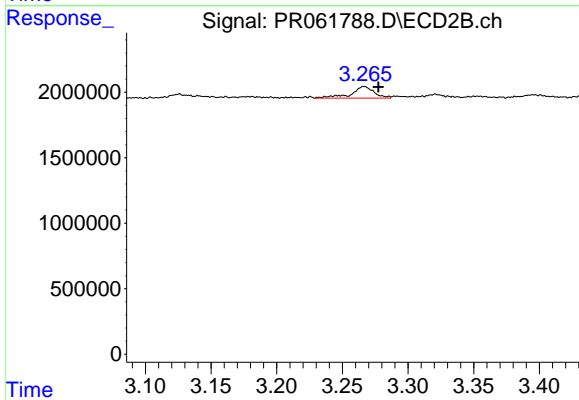
R.T.: 3.195 min
 Delta R.T.: 0.005 min
 Response: 21533
 Conc: 0.56 ng/ml



#9 AR-1221-2

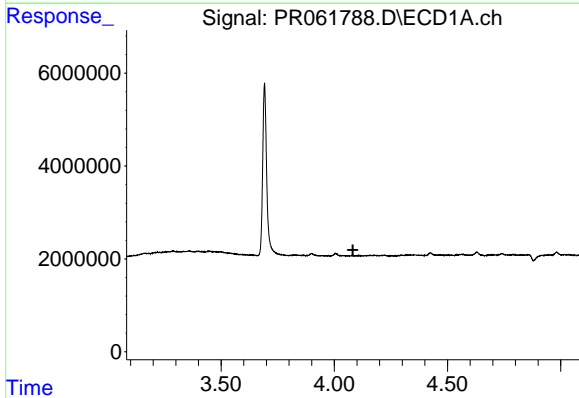
R.T.: 4.005 min
 Delta R.T.: 0.000 min
 Response: 588441
 Conc: 27.61 ng/ml

Instrument :
 ECD_R
 ClientSampleId :



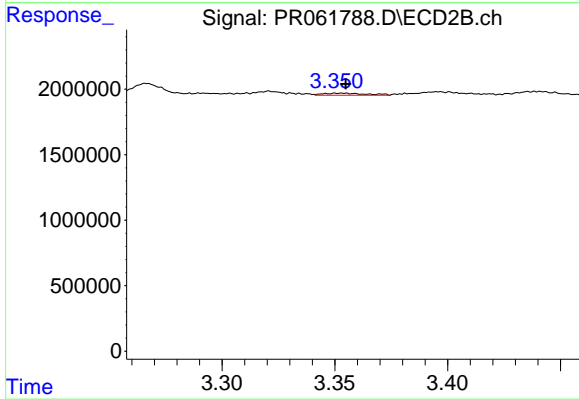
#9 AR-1221-2

R.T.: 3.267 min
 Delta R.T.: -0.011 min
 Response: 1083447
 Conc: 39.46 ng/ml



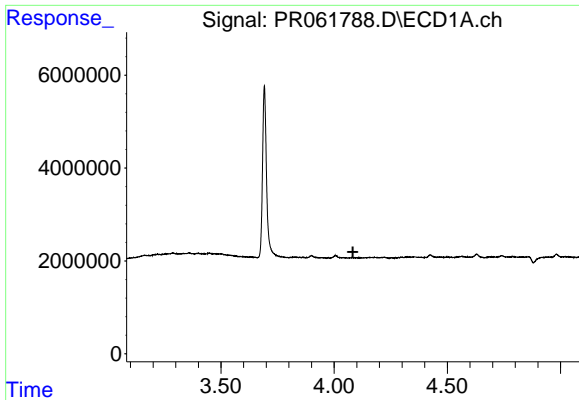
#10 AR-1221-3

R.T.: 0.000 min
 Exp R.T. : 4.082 min
 Response: 0
 Conc: N.D.



#10 AR-1221-3

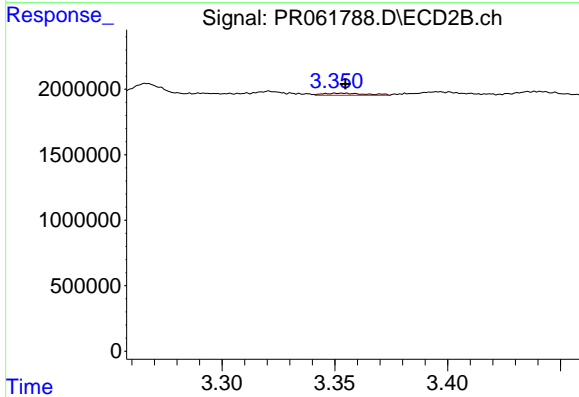
R.T.: 3.353 min
 Delta R.T.: -0.002 min
 Response: 201828
 Conc: 2.32 ng/ml



#11 AR-1232-1

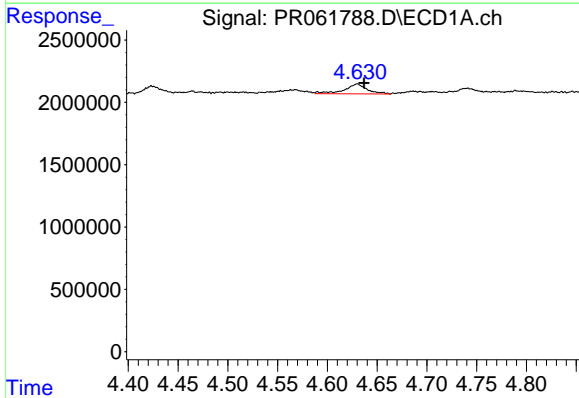
R.T.: 0.000 min
 Exp R.T.: 4.083 min
 Response: 0
 Conc: N.D.

Instrument :
 ECD_R
 ClientSampleId :



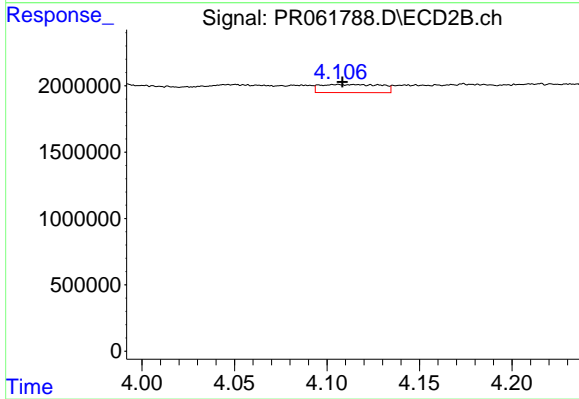
#11 AR-1232-1

R.T.: 3.353 min
 Delta R.T.: -0.002 min
 Response: 201828
 Conc: 2.77 ng/ml



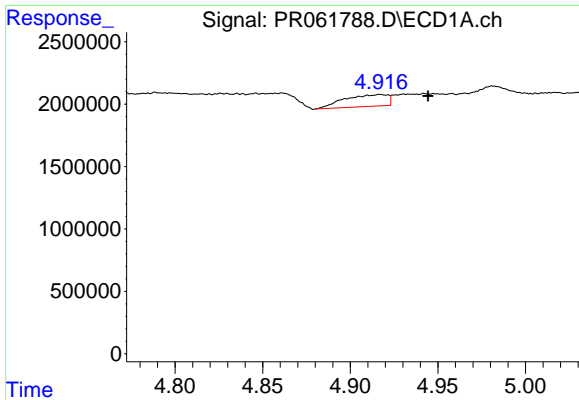
#12 AR-1232-2

R.T.: 4.630 min
 Delta R.T.: -0.007 min
 Response: 1253581
 Conc: 45.35 ng/ml



#12 AR-1232-2

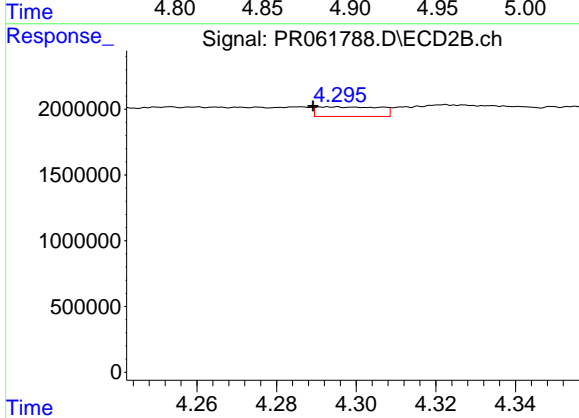
R.T.: 4.106 min
 Delta R.T.: -0.002 min
 Response: 1392812
 Conc: 21.40 ng/ml



#13 AR-1232-3

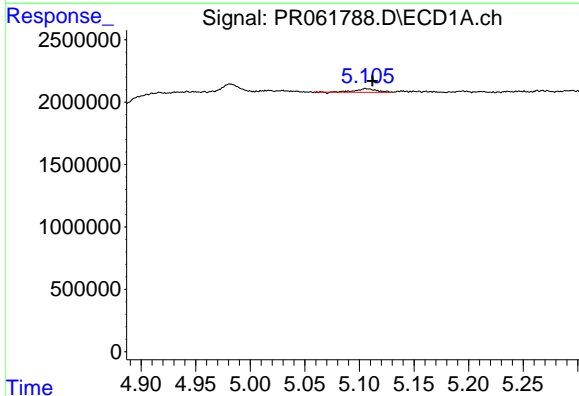
R.T.: 4.917 min
 Delta R.T.: -0.027 min
 Response: 1609913
 Conc: 33.47 ng/ml

Instrument :
 ECD_R
 ClientSampleId :



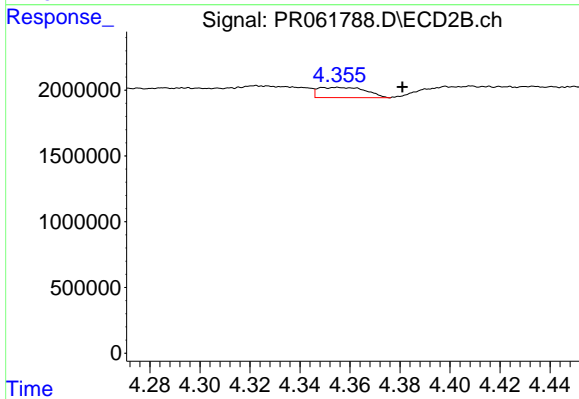
#13 AR-1232-3

R.T.: 4.294 min
 Delta R.T.: 0.005 min
 Response: 796699
 Conc: 21.93 ng/ml



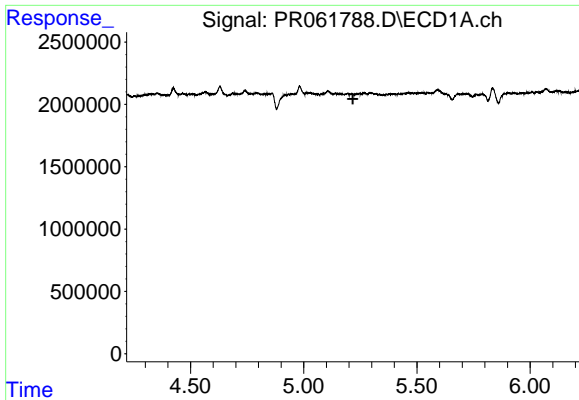
#14 AR-1232-4

R.T.: 5.106 min
 Delta R.T.: -0.006 min
 Response: 375747
 Conc: 15.04 ng/ml



#14 AR-1232-4

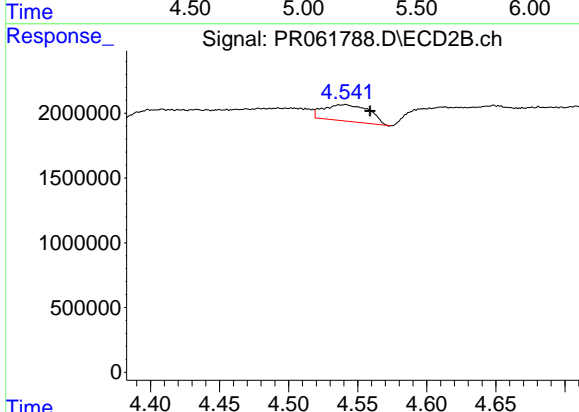
R.T.: 4.355 min
 Delta R.T.: -0.026 min
 Response: 1026124
 Conc: 31.94 ng/ml



#15 AR-1232-5

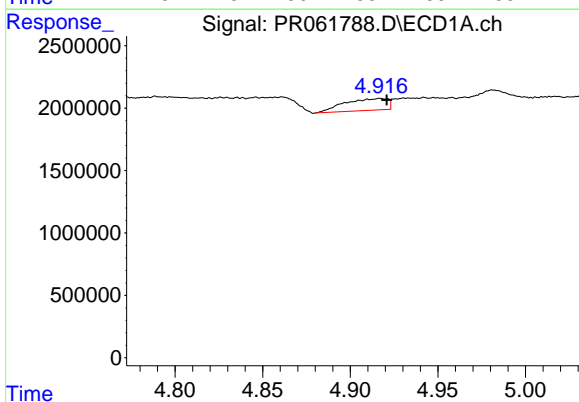
R.T.: 0.000 min
 Exp R.T.: 5.217 min
 Response: 0
 Conc: N.D.

Instrument :
 ECD_R
 ClientSampleId :



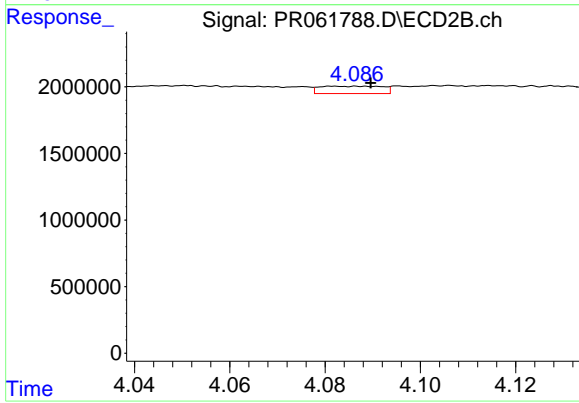
#15 AR-1232-5

R.T.: 4.541 min
 Delta R.T.: -0.018 min
 Response: 2911664
 Conc: 79.76 ng/ml



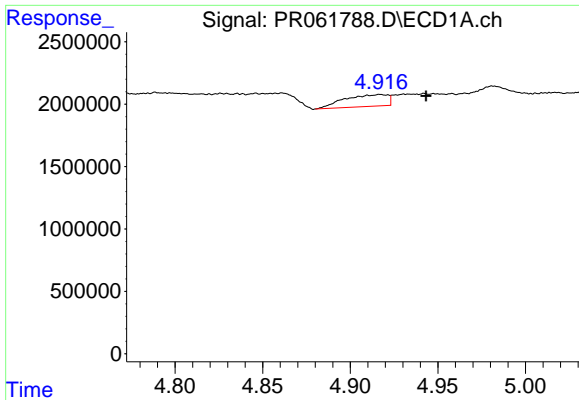
#16 AR-1242-1

R.T.: 4.917 min
 Delta R.T.: -0.004 min
 Response: 1609913
 Conc: 25.92 ng/ml



#16 AR-1242-1

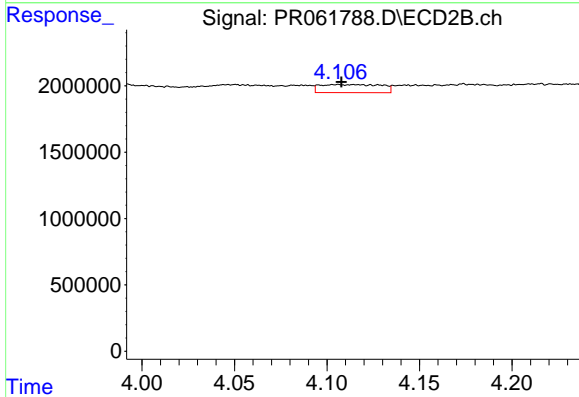
R.T.: 4.082 min
 Delta R.T.: -0.007 min
 Response: 504305
 Conc: 5.95 ng/ml



#17 AR-1242-2

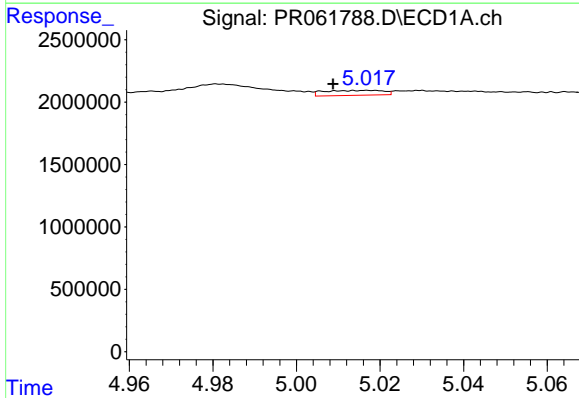
R.T.: 4.917 min
 Delta R.T.: -0.026 min
 Response: 1609913
 Conc: 18.60 ng/ml

Instrument :
 ECD_R
 ClientSampleId :



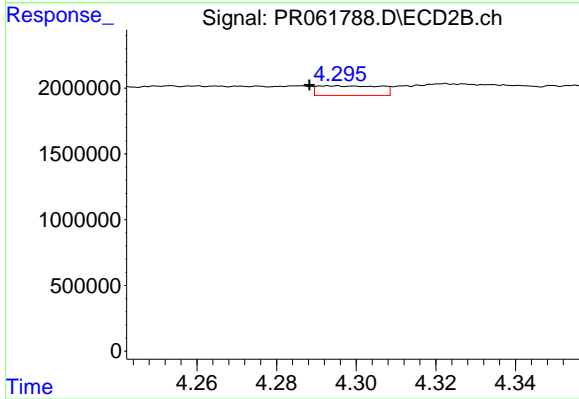
#17 AR-1242-2

R.T.: 4.106 min
 Delta R.T.: -0.002 min
 Response: 1392812
 Conc: 11.98 ng/ml



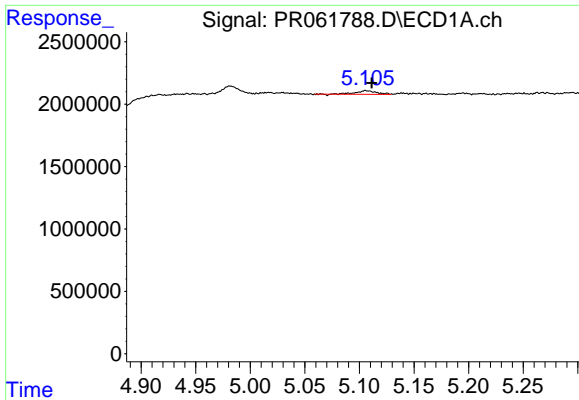
#18 AR-1242-3

R.T.: 5.017 min
 Delta R.T.: 0.009 min
 Response: 390812
 Conc: 6.84 ng/ml



#18 AR-1242-3

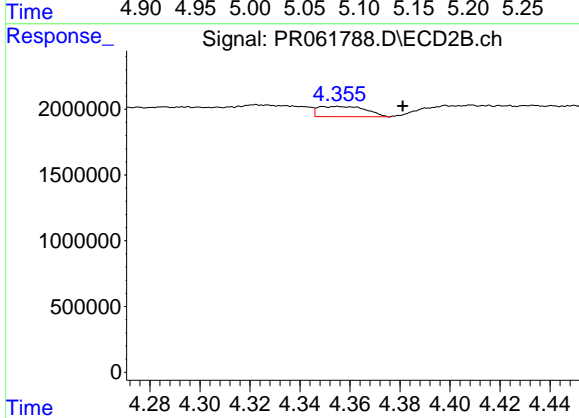
R.T.: 4.294 min
 Delta R.T.: 0.006 min
 Response: 796699
 Conc: 12.12 ng/ml



#19 AR-1242-4

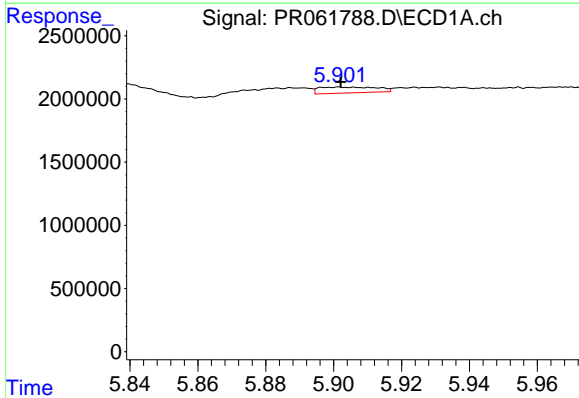
R.T.: 5.106 min
 Delta R.T.: -0.005 min
 Response: 375747
 Conc: 8.16 ng/ml

Instrument :
 ECD_R
 ClientSampleId :



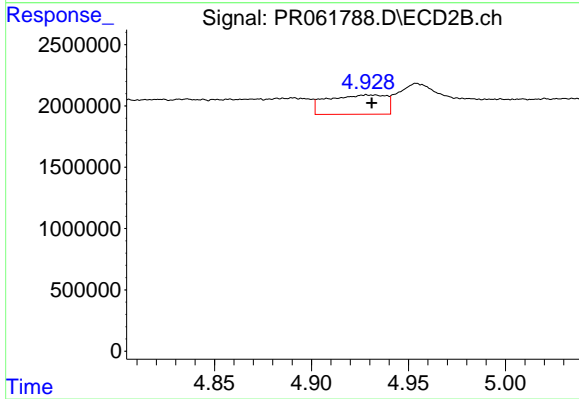
#19 AR-1242-4

R.T.: 4.355 min
 Delta R.T.: -0.026 min
 Response: 1026124
 Conc: 16.06 ng/ml



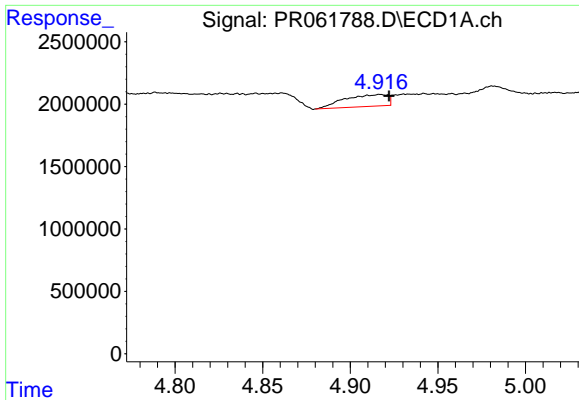
#20 AR-1242-5

R.T.: 5.901 min
 Delta R.T.: 0.000 min
 Response: 548656
 Conc: 12.55 ng/ml



#20 AR-1242-5

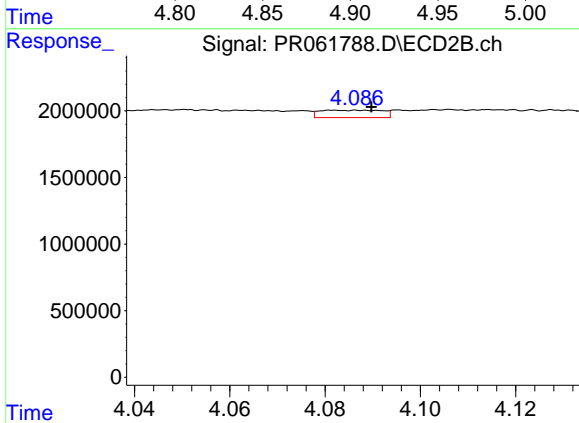
R.T.: 4.929 min
 Delta R.T.: -0.002 min
 Response: 3307057
 Conc: 40.10 ng/ml



#21 AR-1248-1

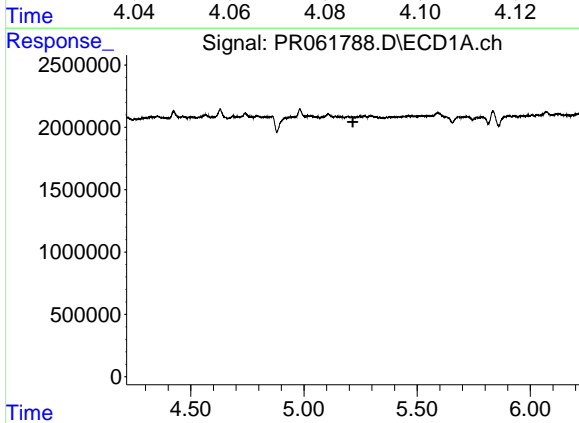
R.T.: 4.917 min
 Delta R.T.: -0.005 min
 Response: 1609913
 Conc: 34.98 ng/ml

Instrument :
 ECD_R
 ClientSampleId :



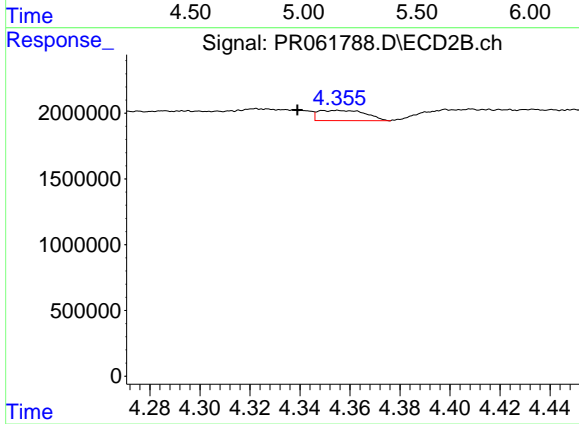
#21 AR-1248-1

R.T.: 4.082 min
 Delta R.T.: -0.008 min
 Response: 504305
 Conc: 7.72 ng/ml



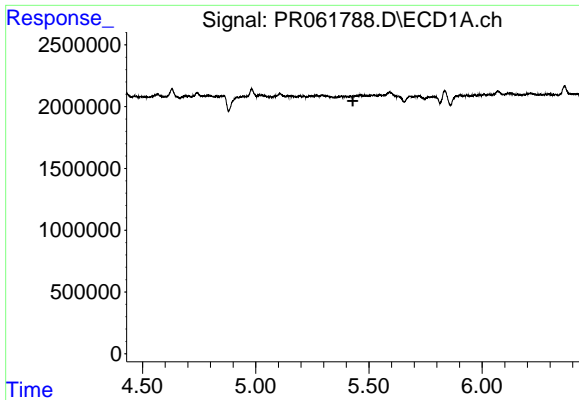
#22 AR-1248-2

R.T.: 0.000 min
 Exp R.T. : 5.216 min
 Response: 0
 Conc: N.D.



#22 AR-1248-2

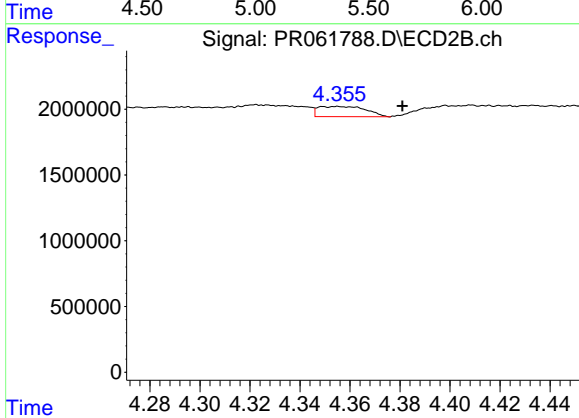
R.T.: 4.355 min
 Delta R.T.: 0.016 min
 Response: 1026124
 Conc: 11.10 ng/ml



#23 AR-1248-3

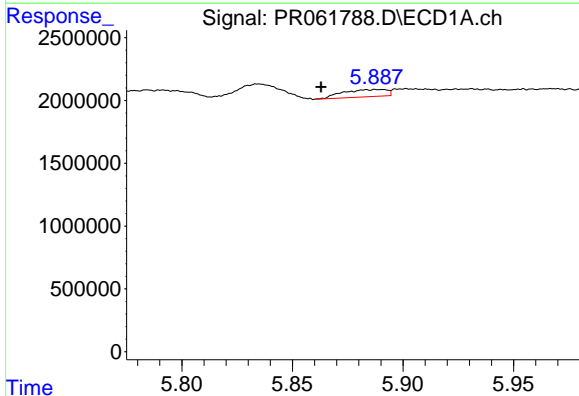
R.T.: 0.000 min
 Exp R.T.: 5.429 min
 Response: 0
 Conc: N.D.

Instrument :
 ECD_R
 ClientSampleId :



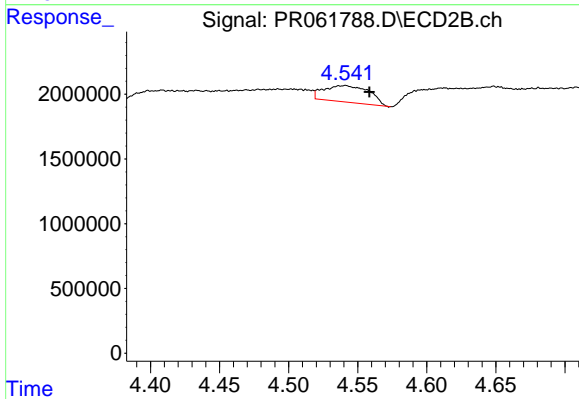
#23 AR-1248-3

R.T.: 4.355 min
 Delta R.T.: -0.026 min
 Response: 1026124
 Conc: 10.81 ng/ml



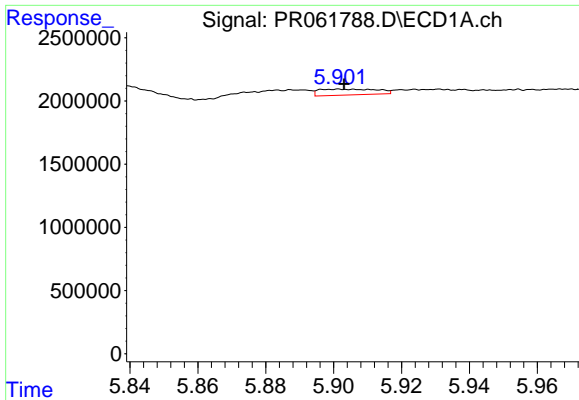
#24 AR-1248-4

R.T.: 5.889 min
 Delta R.T.: 0.026 min
 Response: 785293
 Conc: 10.15 ng/ml



#24 AR-1248-4

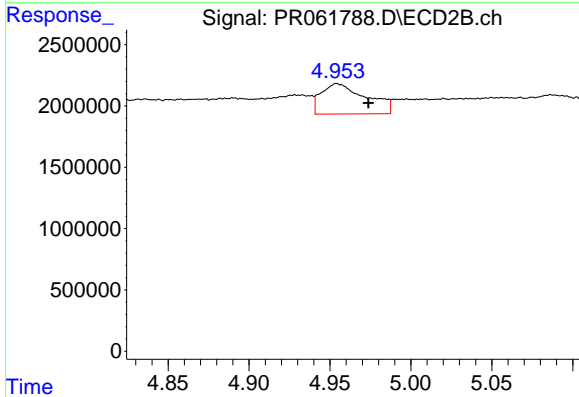
R.T.: 4.541 min
 Delta R.T.: -0.018 min
 Response: 2911664
 Conc: 25.51 ng/ml



#25 AR-1248-5

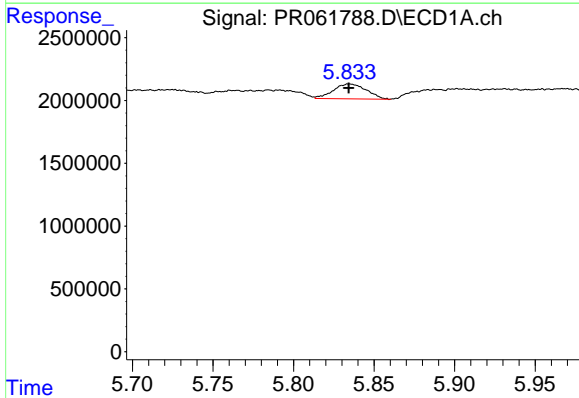
R.T.: 5.901 min
 Delta R.T.: -0.002 min
 Response: 548656
 Conc: 7.37 ng/ml

Instrument :
 ECD_R
 ClientSampleId :



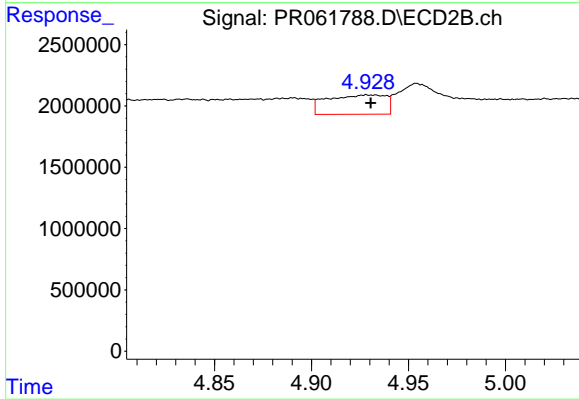
#25 AR-1248-5

R.T.: 4.954 min
 Delta R.T.: -0.019 min
 Response: 4786530
 Conc: 41.96 ng/ml



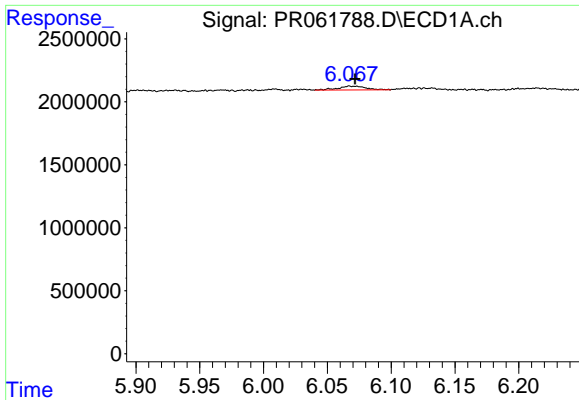
#26 AR-1254-1

R.T.: 5.835 min
 Delta R.T.: 0.000 min
 Response: 1687959
 Conc: 19.77 ng/ml



#26 AR-1254-1

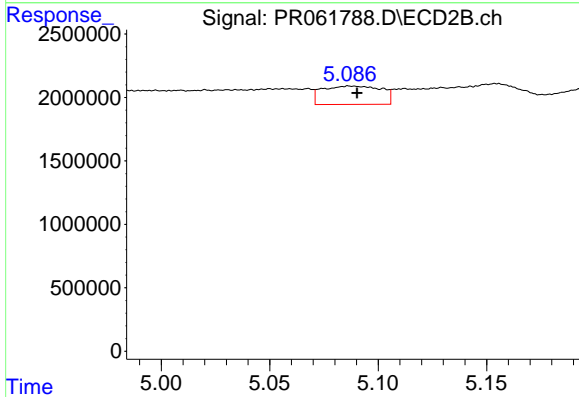
R.T.: 4.929 min
 Delta R.T.: -0.001 min
 Response: 3307057
 Conc: 18.91 ng/ml



#27 AR-1254-2

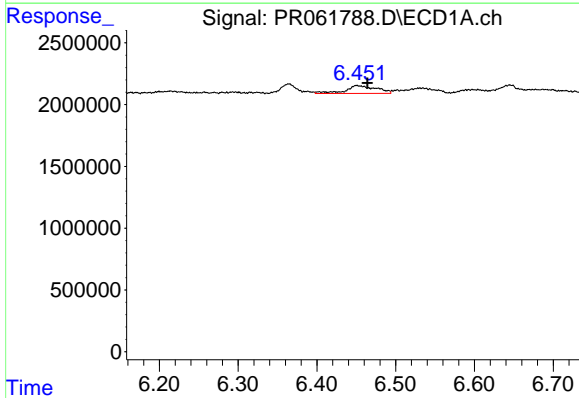
R.T.: 6.068 min
 Delta R.T.: -0.004 min
 Response: 463324
 Conc: 3.70 ng/ml

Instrument :
 ECD_R
 ClientSampleId :



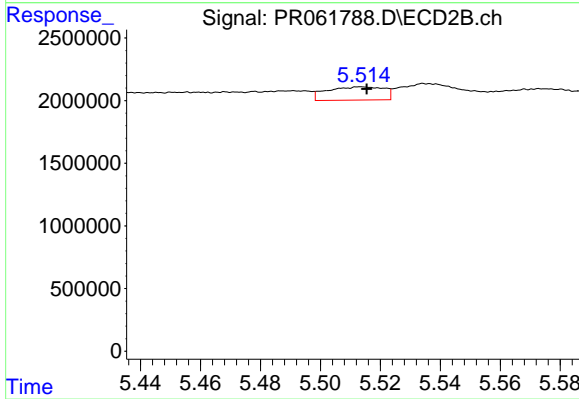
#27 AR-1254-2

R.T.: 5.087 min
 Delta R.T.: -0.003 min
 Response: 2742151
 Conc: 17.98 ng/ml



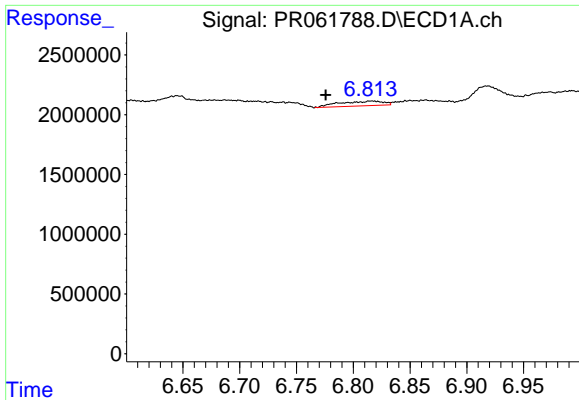
#28 AR-1254-3

R.T.: 6.450 min
 Delta R.T.: -0.014 min
 Response: 1725553
 Conc: 13.98 ng/ml



#28 AR-1254-3

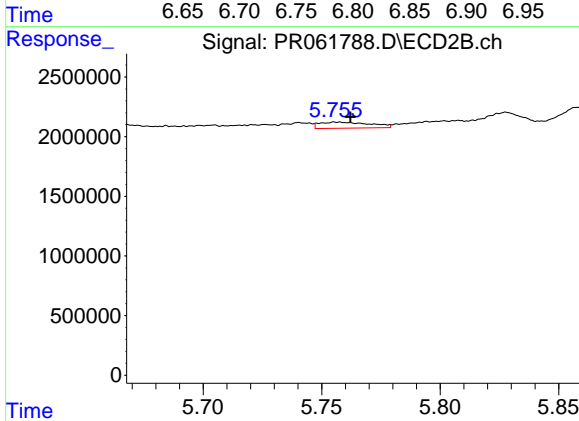
R.T.: 5.514 min
 Delta R.T.: -0.002 min
 Response: 1390365
 Conc: 5.48 ng/ml



#29 AR-1254-4

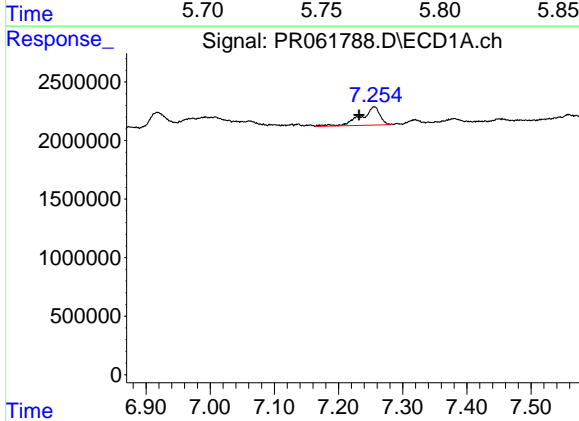
R.T.: 6.817 min
 Delta R.T.: 0.041 min
 Response: 1063772
 Conc: 12.21 ng/ml

Instrument :
 ECD_R
 ClientSampleId :



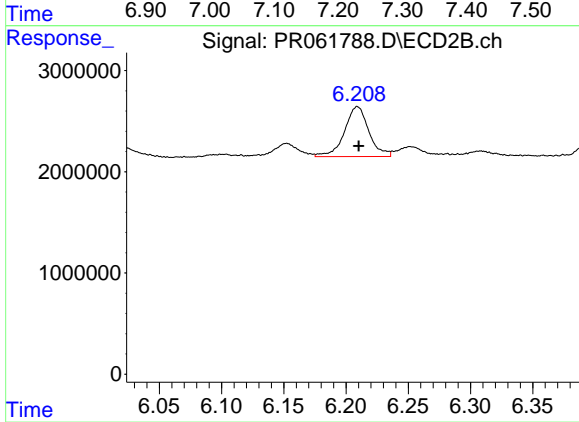
#29 AR-1254-4

R.T.: 5.757 min
 Delta R.T.: -0.006 min
 Response: 760608
 Conc: 4.62 ng/ml



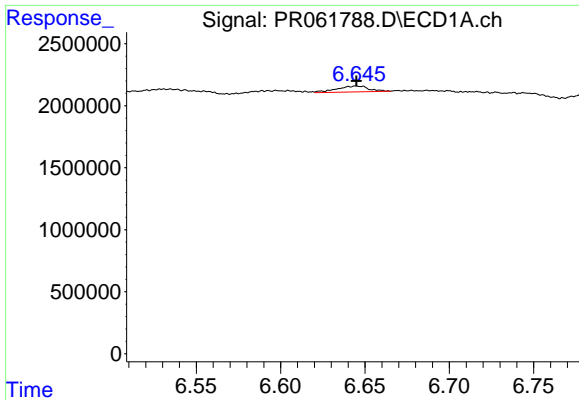
#30 AR-1254-5

R.T.: 7.256 min
 Delta R.T.: 0.024 min
 Response: 3220810
 Conc: 34.92 ng/ml



#30 AR-1254-5

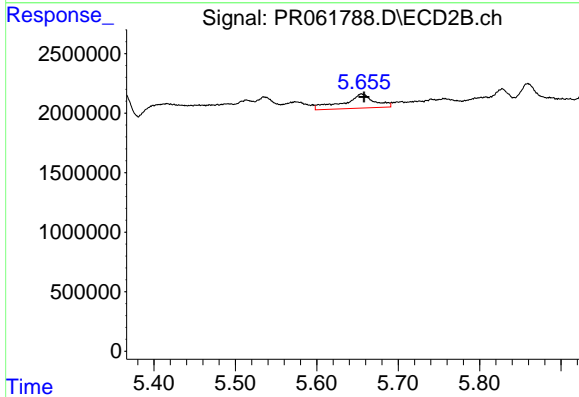
R.T.: 6.209 min
 Delta R.T.: -0.001 min
 Response: 6733003
 Conc: 27.17 ng/ml



#31 AR-1260-1

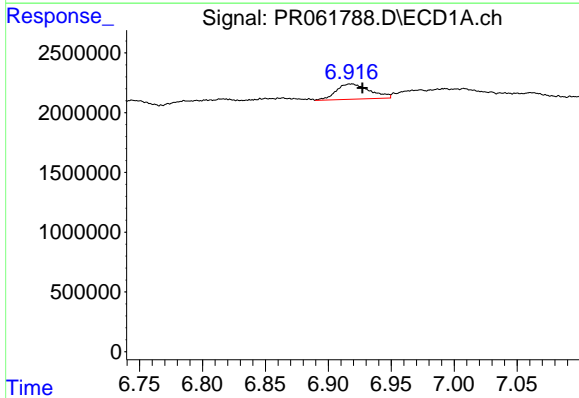
R.T.: 6.645 min
 Delta R.T.: 0.000 min
 Response: 619195
 Conc: 6.60 ng/ml

Instrument :
 ECD_R
 ClientSampleId :



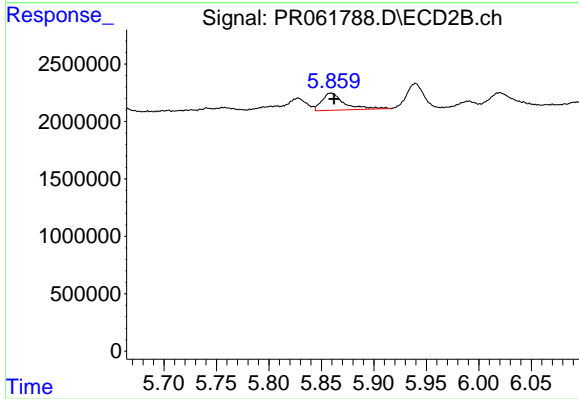
#31 AR-1260-1

R.T.: 5.655 min
 Delta R.T.: -0.003 min
 Response: 3145510
 Conc: 18.40 ng/ml



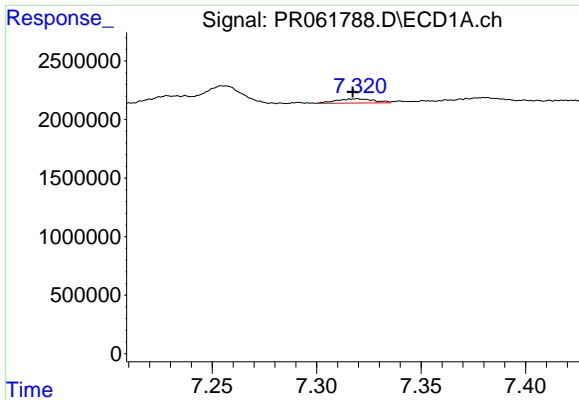
#32 AR-1260-2

R.T.: 6.918 min
 Delta R.T.: -0.009 min
 Response: 2366122
 Conc: 22.59 ng/ml



#32 AR-1260-2

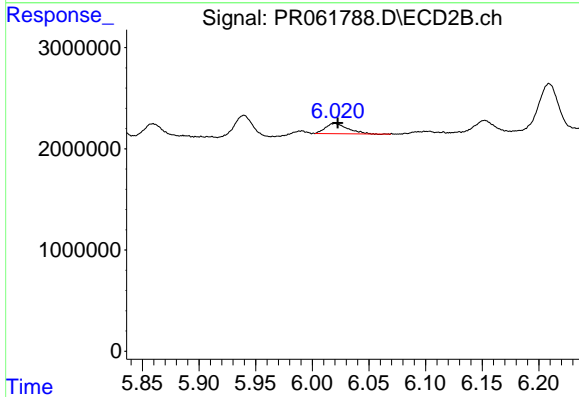
R.T.: 5.859 min
 Delta R.T.: -0.003 min
 Response: 2209755
 Conc: 10.61 ng/ml



#33 AR-1260-3

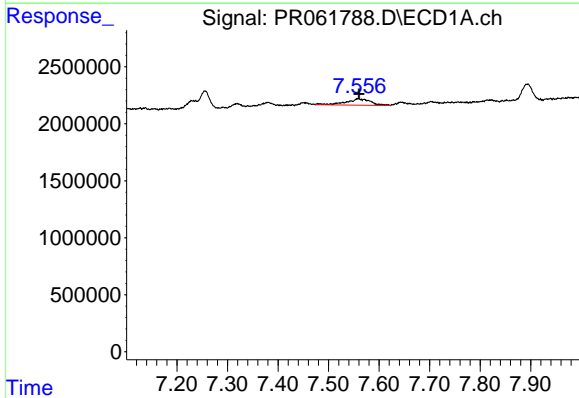
R.T.: 7.319 min
 Delta R.T.: 0.002 min
 Response: 462121
 Conc: 6.05 ng/ml

Instrument :
 ECD_R
 ClientSampleId :



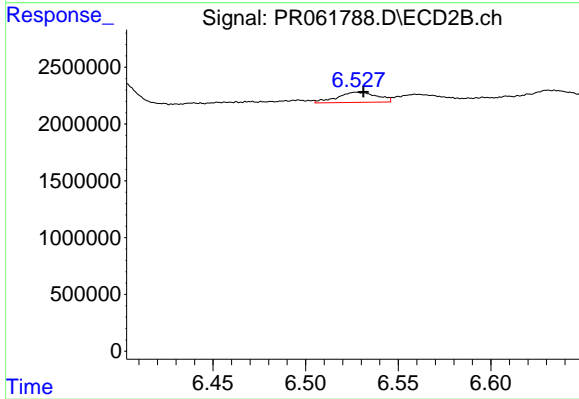
#33 AR-1260-3

R.T.: 6.020 min
 Delta R.T.: -0.003 min
 Response: 1362879
 Conc: 6.66 ng/ml



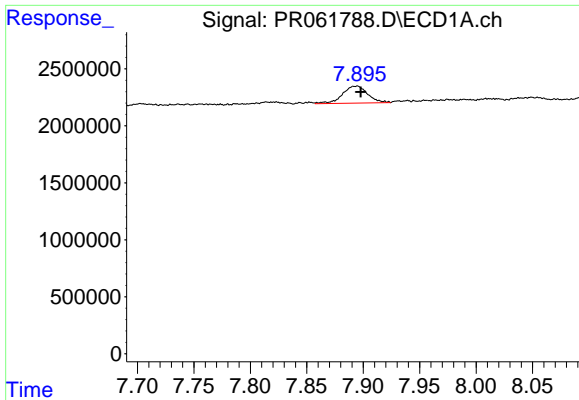
#34 AR-1260-4

R.T.: 7.559 min
 Delta R.T.: -0.002 min
 Response: 1899891
 Conc: 22.25 ng/ml



#34 AR-1260-4

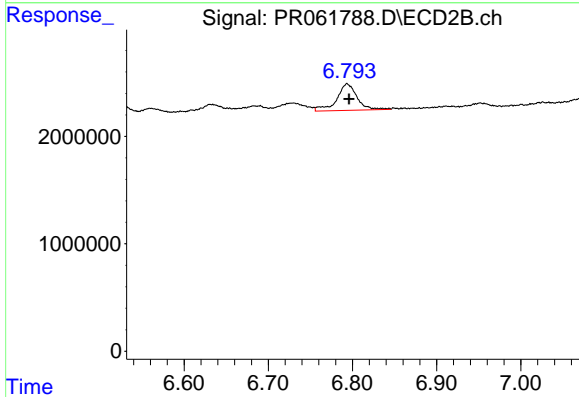
R.T.: 6.527 min
 Delta R.T.: -0.004 min
 Response: 1347997
 Conc: 7.64 ng/ml



#35 AR-1260-5

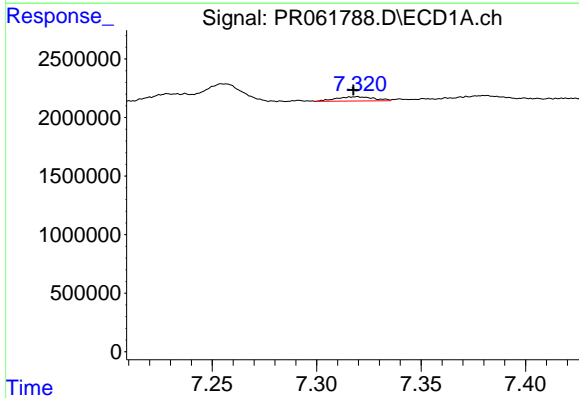
R.T.: 7.894 min
Delta R.T.: -0.004 min
Response: 2325585
Conc: 15.31 ng/ml

Instrument :
ECD_R
ClientSampleId :



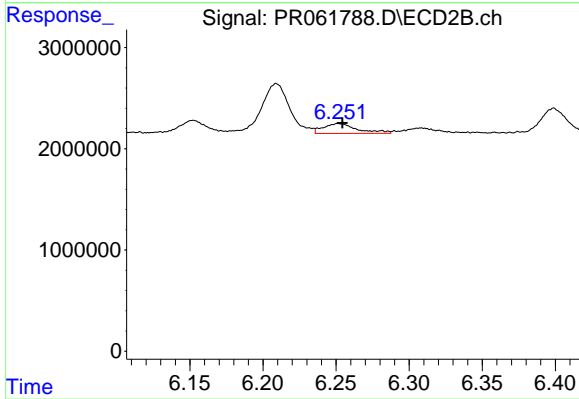
#35 AR-1260-5

R.T.: 6.794 min
Delta R.T.: -0.002 min
Response: 4155371
Conc: 10.01 ng/ml



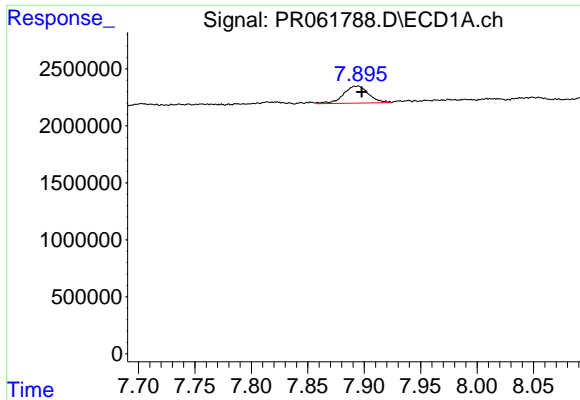
#36 AR-1262-1

R.T.: 7.319 min
Delta R.T.: 0.002 min
Response: 462121
Conc: 4.16 ng/ml



#36 AR-1262-1

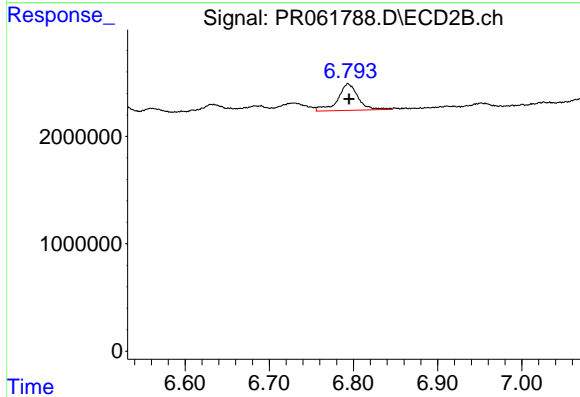
R.T.: 6.252 min
Delta R.T.: -0.002 min
Response: 1568625
Conc: 6.30 ng/ml



#37 AR-1262-2

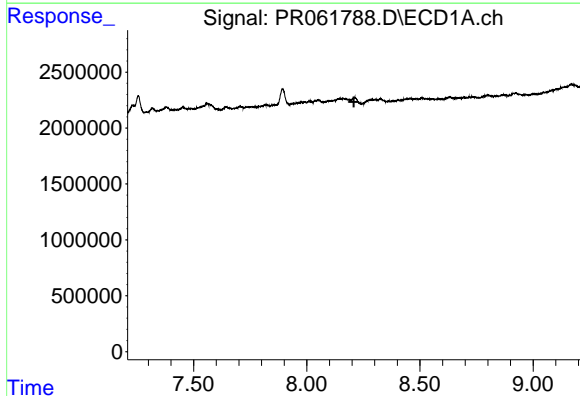
R.T.: 7.894 min
 Delta R.T.: -0.004 min
 Response: 2325585
 Conc: 13.27 ng/ml

Instrument :
 ECD_R
 ClientSampleId :



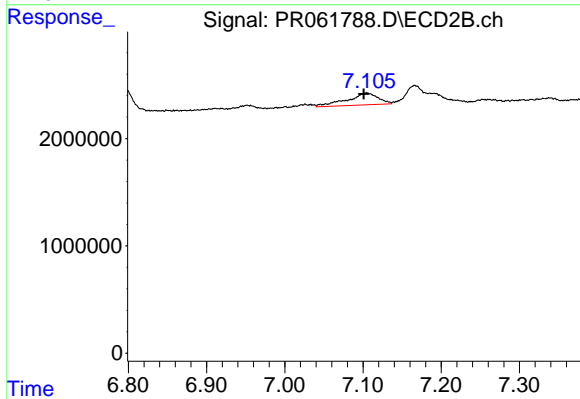
#37 AR-1262-2

R.T.: 6.794 min
 Delta R.T.: -0.001 min
 Response: 4155371
 Conc: 8.88 ng/ml



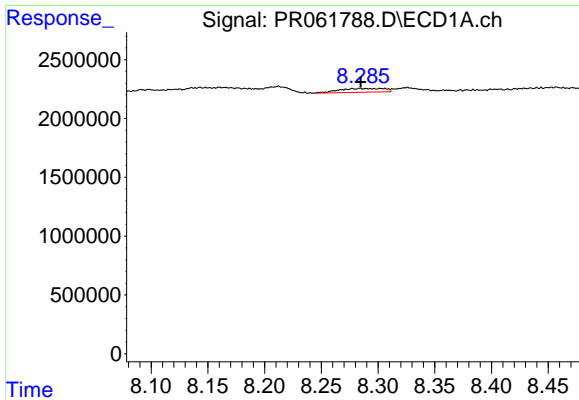
#38 AR-1262-3

R.T.: 0.000 min
 Exp R.T. : 8.208 min
 Response: 0
 Conc: N.D.



#38 AR-1262-3

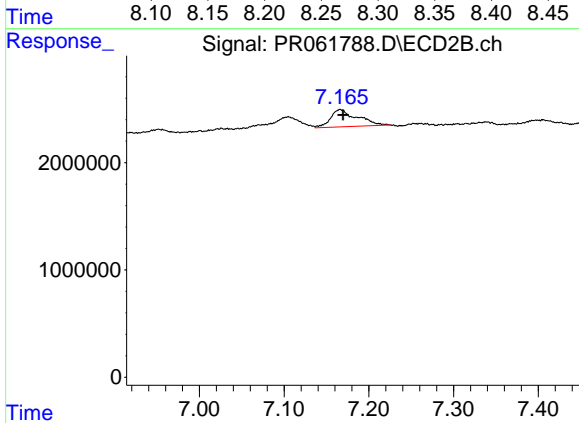
R.T.: 7.105 min
 Delta R.T.: 0.004 min
 Response: 3019195
 Conc: 16.07 ng/ml



#39 AR-1262-4

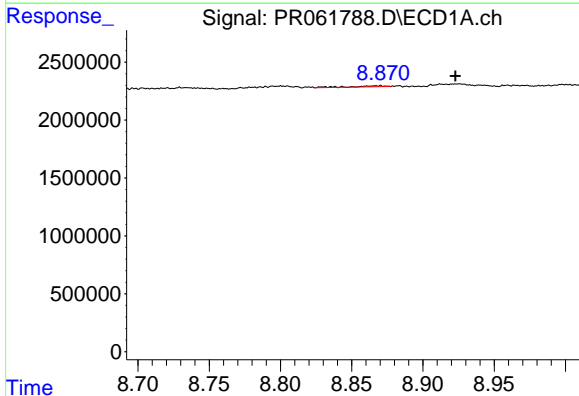
R.T.: 8.284 min
 Delta R.T.: 0.000 min
 Response: 899124
 Conc: 15.57 ng/ml

Instrument :
 ECD_R
 ClientSampleId :



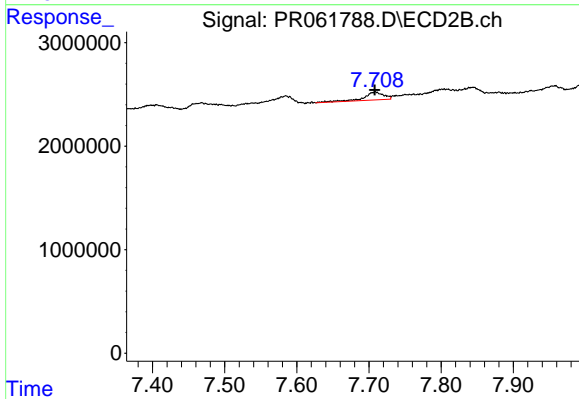
#39 AR-1262-4

R.T.: 7.166 min
 Delta R.T.: -0.003 min
 Response: 3581319
 Conc: 10.07 ng/ml



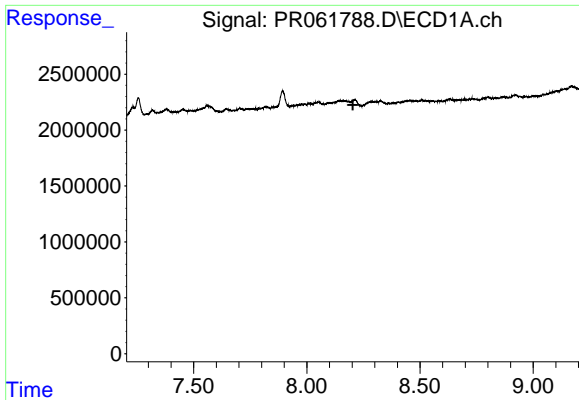
#40 AR-1262-5

R.T.: 8.870 min
 Delta R.T.: -0.053 min
 Response: 133659
 Conc: 2.20 ng/ml



#40 AR-1262-5

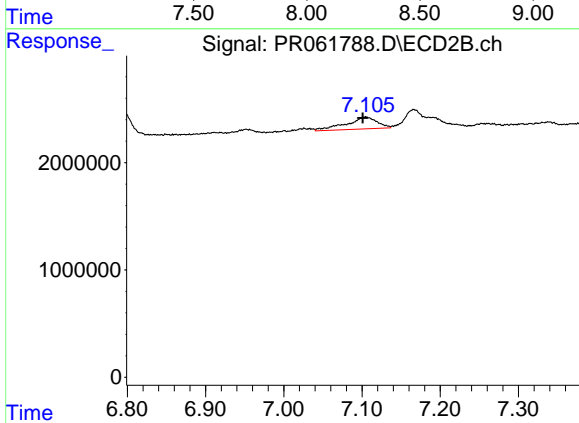
R.T.: 7.709 min
 Delta R.T.: 0.000 min
 Response: 1476209
 Conc: 8.37 ng/ml



#41 AR-1268-1

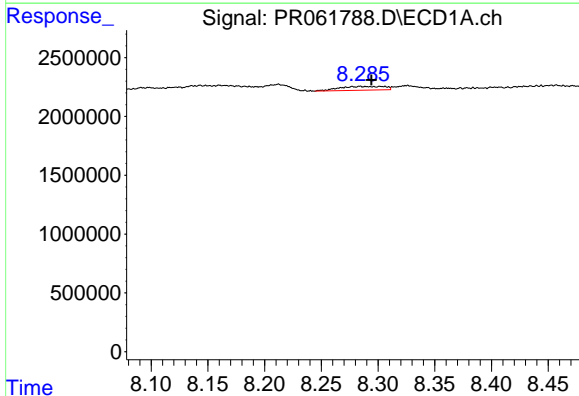
R.T.: 0.000 min
 Exp R.T.: 8.203 min
 Response: 0
 Conc: N.D.

Instrument :
 ECD_R
 ClientSampleId :



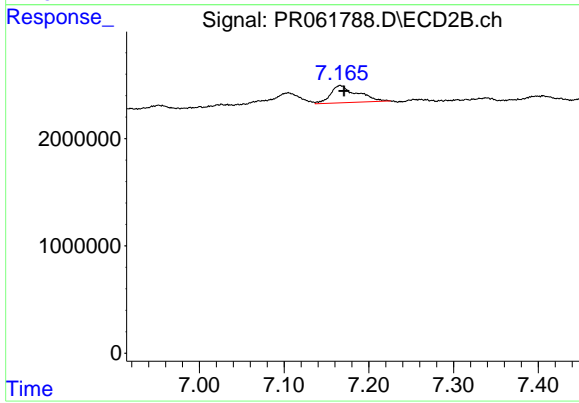
#41 AR-1268-1

R.T.: 7.105 min
 Delta R.T.: 0.004 min
 Response: 3019195
 Conc: 6.90 ng/ml



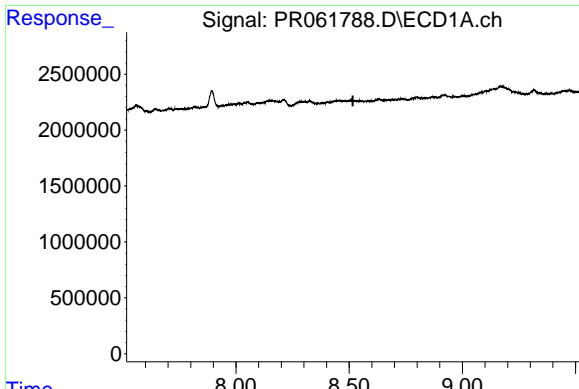
#42 AR-1268-2

R.T.: 8.284 min
 Delta R.T.: -0.010 min
 Response: 899124
 Conc: 5.75 ng/ml



#42 AR-1268-2

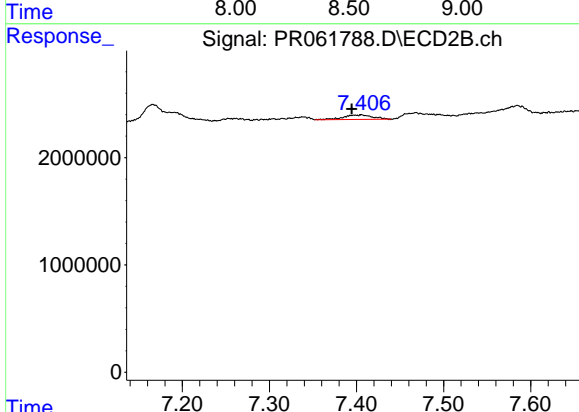
R.T.: 7.166 min
 Delta R.T.: -0.004 min
 Response: 3581319
 Conc: 8.87 ng/ml



#43 AR-1268-3

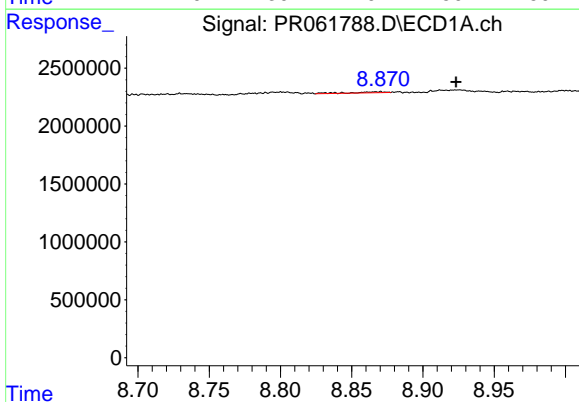
R.T.: 0.000 min
 Exp R.T.: 8.517 min
 Response: 0
 Conc: N.D.

Instrument :
 ECD_R
 ClientSampleId :



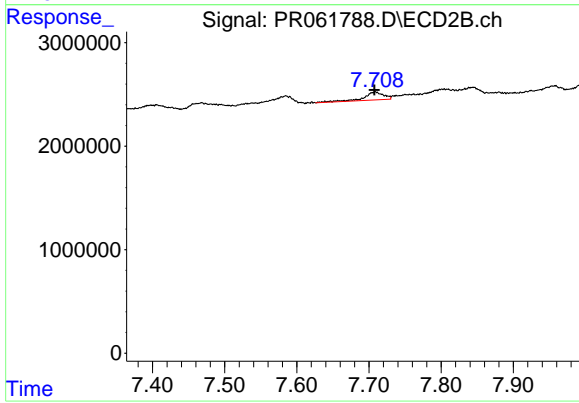
#43 AR-1268-3

R.T.: 7.406 min
 Delta R.T.: 0.011 min
 Response: 993319
 Conc: 2.83 ng/ml



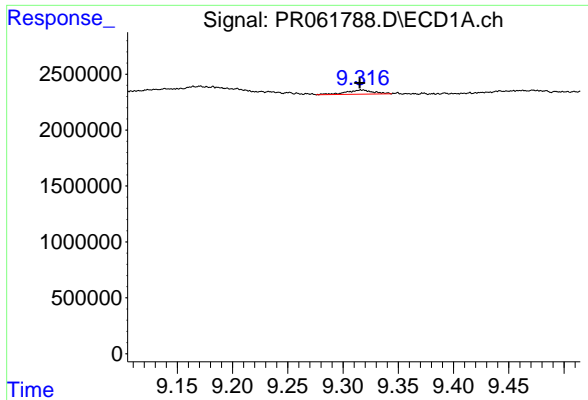
#44 AR-1268-4

R.T.: 8.870 min
 Delta R.T.: -0.053 min
 Response: 133659
 Conc: 2.45 ng/ml



#44 AR-1268-4

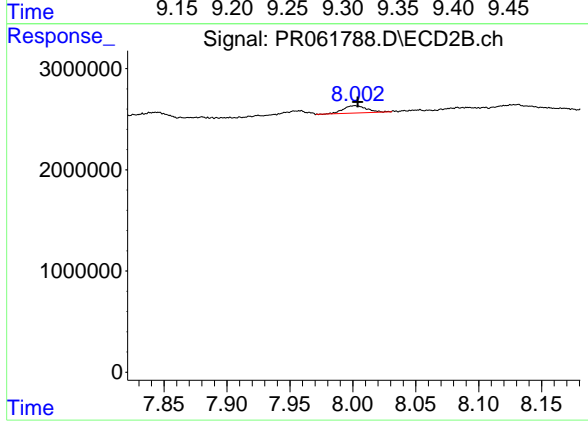
R.T.: 7.709 min
 Delta R.T.: 0.001 min
 Response: 1476209
 Conc: 9.39 ng/ml



#45 AR-1268-5

R.T.: 9.317 min
 Delta R.T.: 0.002 min
 Response: 633203
 Conc: 1.60 ng/ml

Instrument :
 ECD_R
 ClientSampleId :



#45 AR-1268-5

R.T.: 8.002 min
 Delta R.T.: -0.002 min
 Response: 930969
 Conc: 0.82 ng/ml