

Data Path : Z:\pestpcbsrv\HPCHEM1\ECD_R\Data\PR061223\
 Data File : PR061785.D
 Signal(s) : Signal #1: ECD1A.ch Signal #2: ECD2B.ch
 Acq On : 12 Jun 2023 17:03
 Operator : YP\AJ
 Sample : 03078-10
 Misc :
 ALS Vial : 44 Sample Multiplier: 1

Instrument :

ECD_R

ClientSampleId :

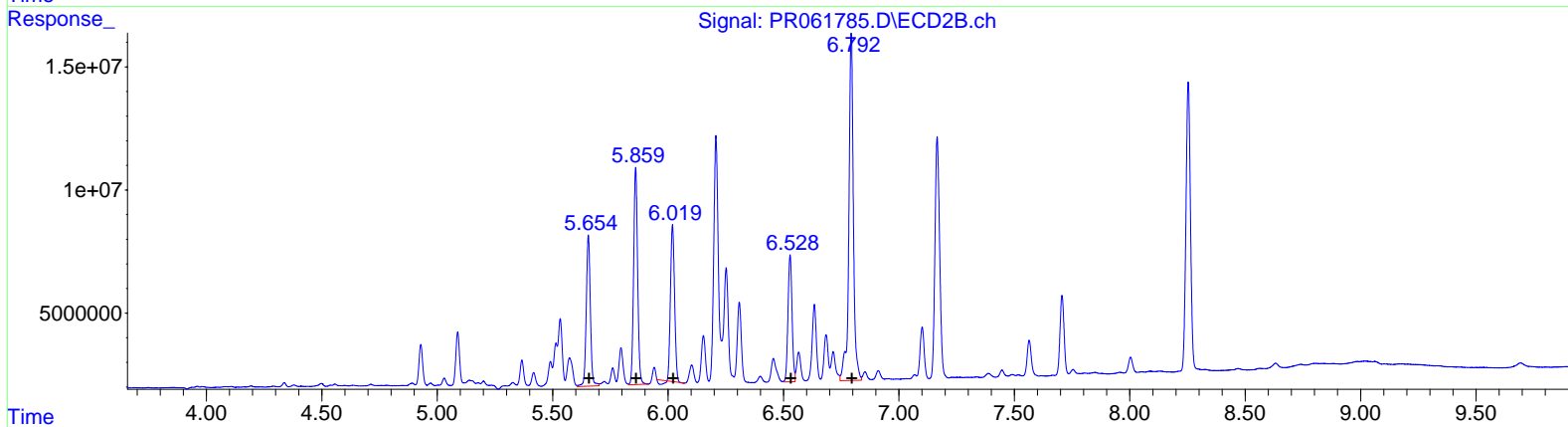
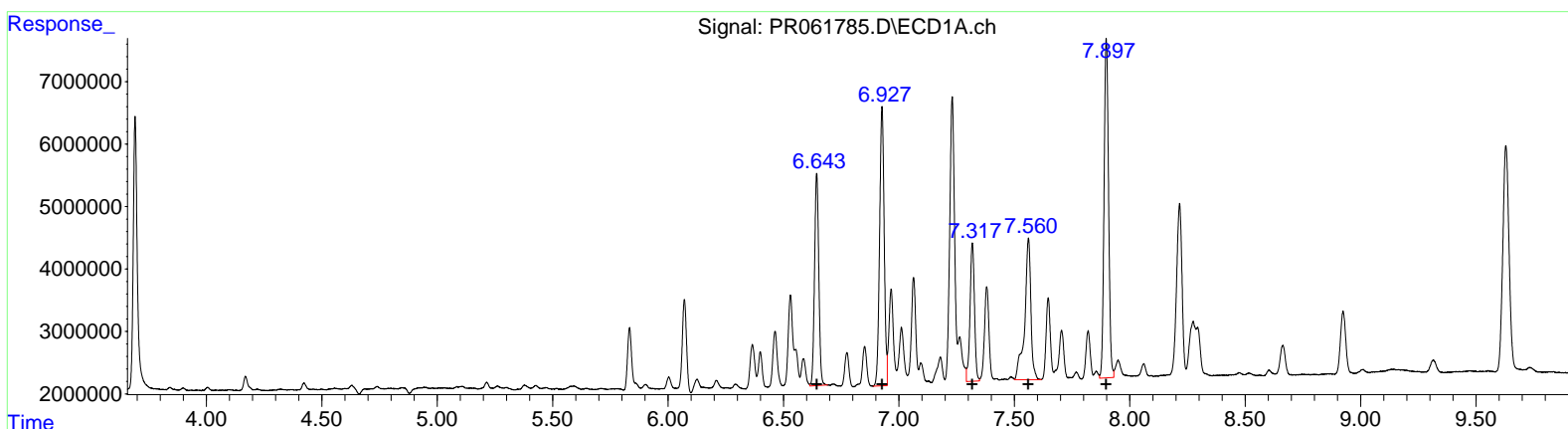
ESQX8

Manual IntegrationsAPPROVED

Reviewed By :Yogesh Patel 06/13/2023
 Supervised By :Ankita Jodhani 06/13/2023

Integration File signal 1: autoint1.e
 Integration File signal 2: autoint2.e
 Quant Time: Jun 12 22:23:09 2023
 Quant Method : Z:\pestpcbsrv\HPCHEM1\ECD_R\Method\PR060623CLP.M
 Quant Title : GC EXTRACTABLES
 QLast Update : Wed Jun 07 04:58:45 2023
 Response via : Initial Calibration
 Integrator: ChemStation

Volume Inj. : 1 µl
 Signal #1 Phase : ZB MR1 Signal #2 Phase: ZB MR2
 Signal #1 Info : 30Mx0.32mmx 0.5µm Signal #2 Info : 30M x 0.32mm x 0.25µm



QEdit

(31) AR-1260-1 (L7)		
R.T.	Response	Conc
6.64	43459455	462.99
6.93	61730460	589.38
7.32	29749488	389.68
7.56	42298572	495.38
7.90	73451299	483.61
(31) AR-1260-1 #2 (L7)		
R.T.	Response	Conc
5.65	75670679	442.62
5.86	105870515	508.26
6.02	76346254	373.36
6.53	63012895	357.11
6.79	193423521	465.76

Data Path : Z:\pestpcbsrv\HPCHEM1\ECD_R\Data\PR061223\
 Data File : PR061785.D
 Signal(s) : Signal #1: ECD1A.ch Signal #2: ECD2B.ch
 Acq On : 12 Jun 2023 17:03
 Operator : YP\AJ
 Sample : 03078-10
 Misc :
 ALS Vial : 44 Sample Multiplier: 1

Instrument :

ECD_R

ClientSampleId :

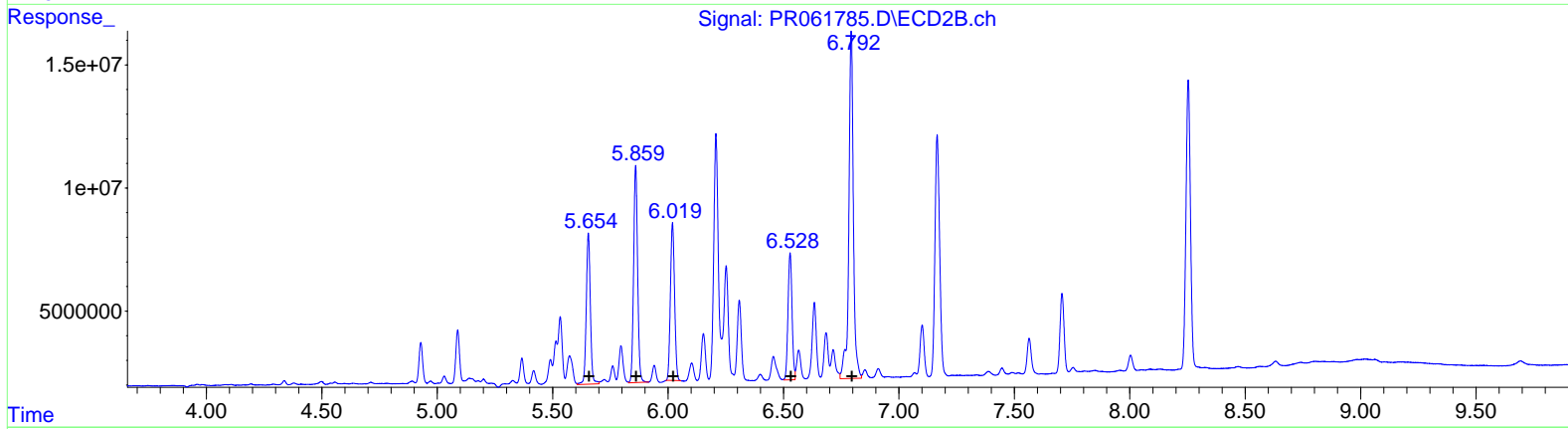
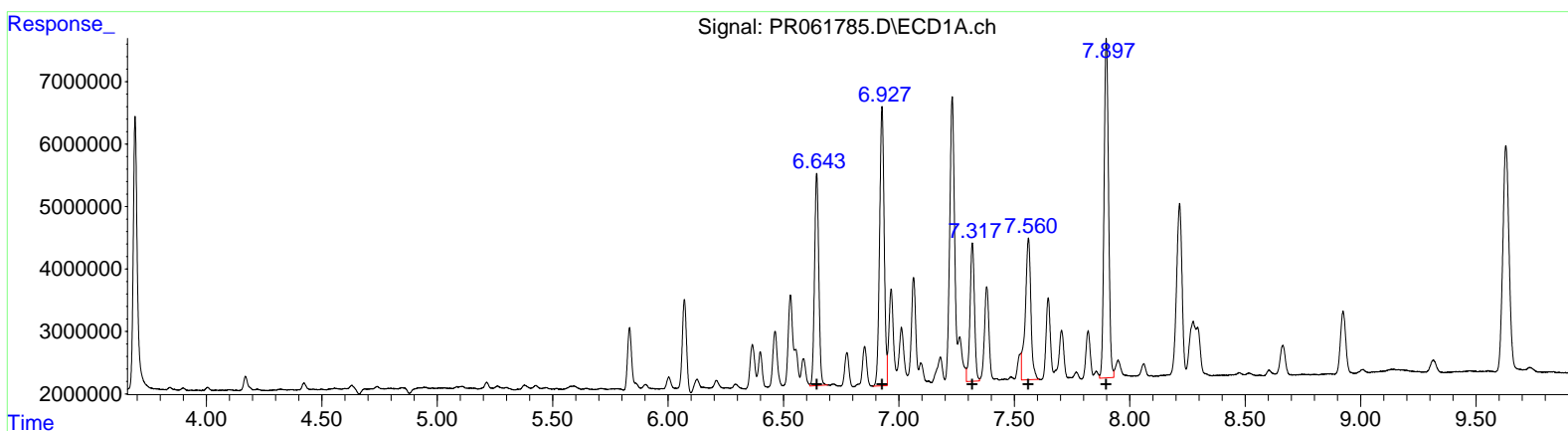
ESQX8

Manual IntegrationsAPPROVED

Reviewed By :Yogesh Patel 06/13/2023
 Supervised By :Ankita Jodhani 06/13/2023

Integration File signal 1: autoint1.e
 Integration File signal 2: autoint2.e
 Quant Time: Jun 12 22:23:09 2023
 Quant Method : Z:\pestpcbsrv\HPCHEM1\ECD_R\Method\PR060623CLP.M
 Quant Title : GC EXTRACTABLES
 QLast Update : Wed Jun 07 04:58:45 2023
 Response via : Initial Calibration
 Integrator: ChemStation

Volume Inj. : 1 µl
 Signal #1 Phase : ZB MR1 Signal #2 Phase: ZB MR2
 Signal #1 Info : 30Mx0.32mmx 0.5µm Signal #2 Info : 30M x 0.32mm x 0.25µm



QEdit

(31) AR-1260-1 #2 (L7)		
R.T.	Response	Conc
6.64	43459455	462.99
6.93	61730460	589.38
7.32	29749488	389.68
7.56	37831142	443.06
7.90	73451299	483.61

(31) AR-1260-1 #2 (L7)		
R.T.	Response	Conc
5.65	75670679	442.62
5.86	105870515	508.26
6.02	80493688	393.64
6.53	63012895	357.11
6.79	193423521	465.76