

Data Path : Z:\pestpcbsrv\HPCHEM1\ECD_R\Data\PR061421\
 Data File : PR050835.D
 Signal(s) : Signal #1: ECD1A.ch Signal #2: ECD2B.ch
 Acq On : 14 Jun 2021 20:30
 Operator : DD\AJ
 Sample : M2596-16
 Misc :
 ALS Vial : 27 Sample Multiplier: 1

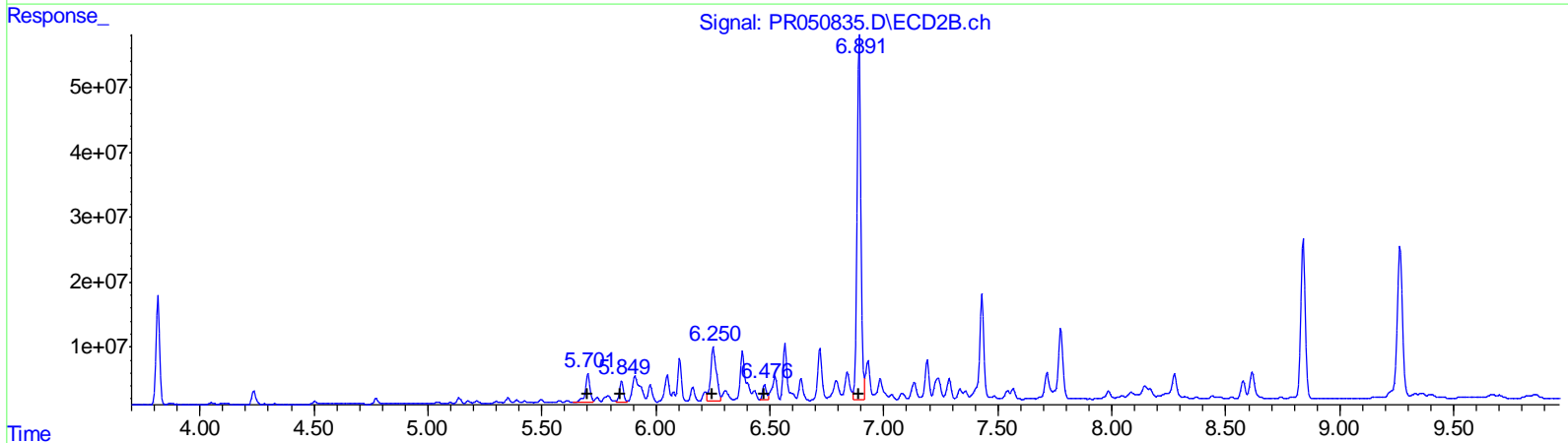
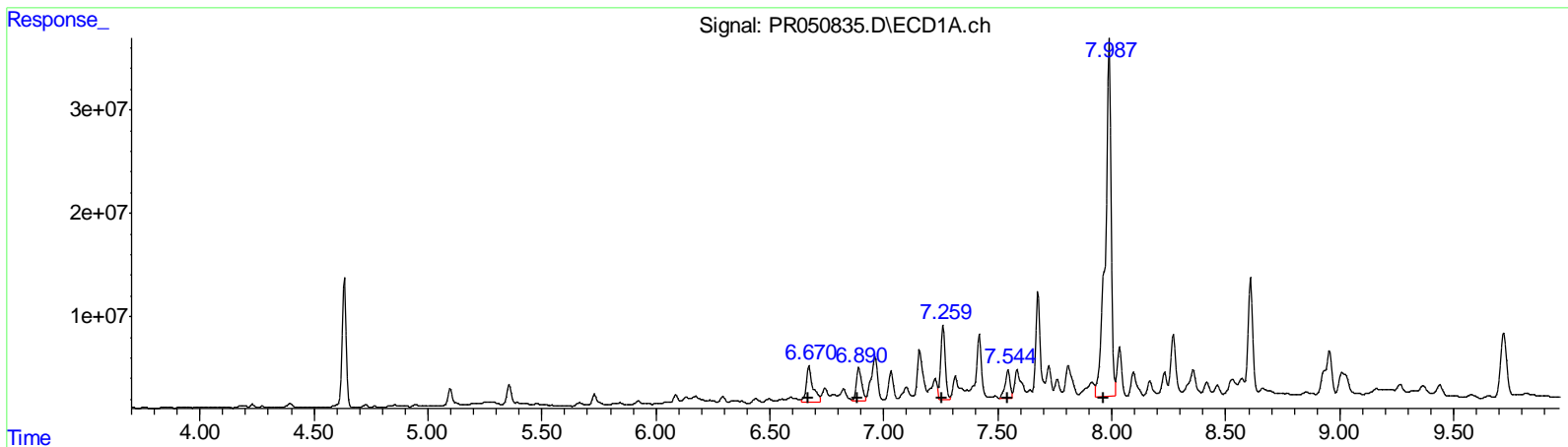
Instrument :
 ECD_R
 ClientSampled :
 BG5R5

Manual Integrations
 APPROVED

Ankita
 6/15/2021 4:25:16 PM

Integration File signal 1: autoint1.e
 Integration File signal 2: autoint2.e
 Quant Time: Jun 15 01:50:58 2021
 Quant Method : Z:\pestpcbsrv\HPCHEM1\ECD_R\Method\PR060121CLP.M
 Quant Title : GC EXTRACTABLES
 QLast Update : Wed Jun 02 05:07:41 2021
 Response via : Initial Calibration
 Integrator: ChemStation

Volume Inj. : 1 µl
 Signal #1 Phase : ZB MR1 Signal #2 Phase: ZB MR2
 Signal #1 Info : 30Mx0.32mmx 0.5µm Signal #2 Info : 30M x 0.32mm x 0.25µm



QEdit

(26) AR-1254-1 (L6)		
R.T.	Response	Conc
6.67	70555352	162.41
6.89	53273258	77.26
7.26	98256584	128.55
7.54	42781036	73.89
7.99	613341077	972.87
(26) AR-1254-1 #2 (L6)		
R.T.	Response	Conc
5.70	65000490	105.60
5.85	40681447	75.60
6.25	145338827	152.57
6.48	26698491	44.88
6.89	652793815	749.74

(+) = Expected Retention Time

Data Path : Z:\pestpcbsrv\HPCHEM1\ECD_R\Data\PR061421\
 Data File : PR050835.D
 Signal(s) : Signal #1: ECD1A.ch Signal #2: ECD2B.ch
 Acq On : 14 Jun 2021 20:30
 Operator : DD\AJ
 Sample : M2596-16
 Misc :
 ALS Vial : 27 Sample Multiplier: 1

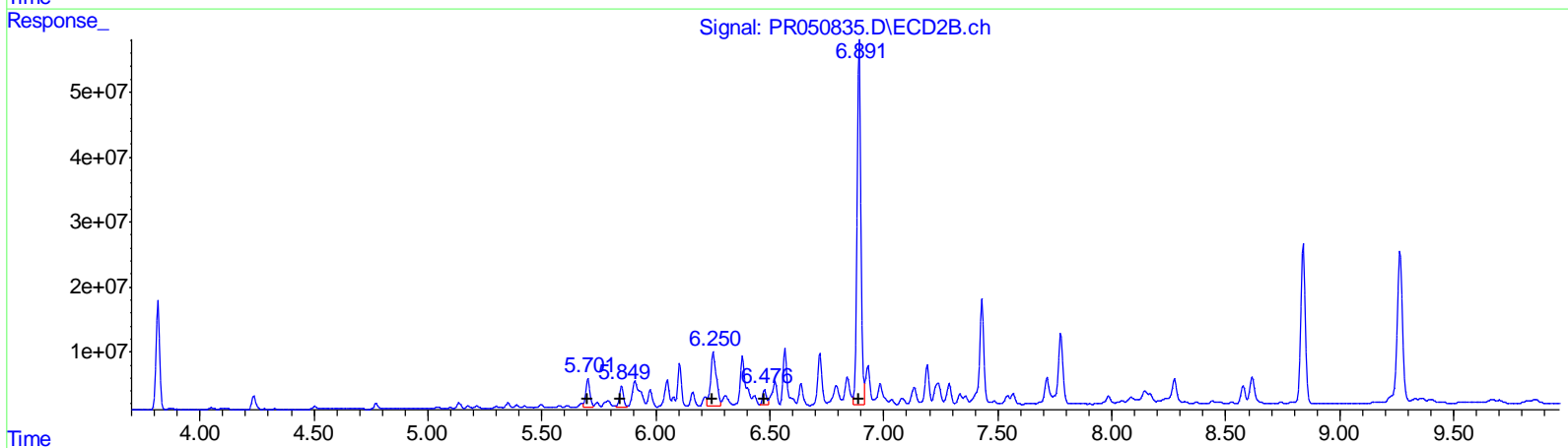
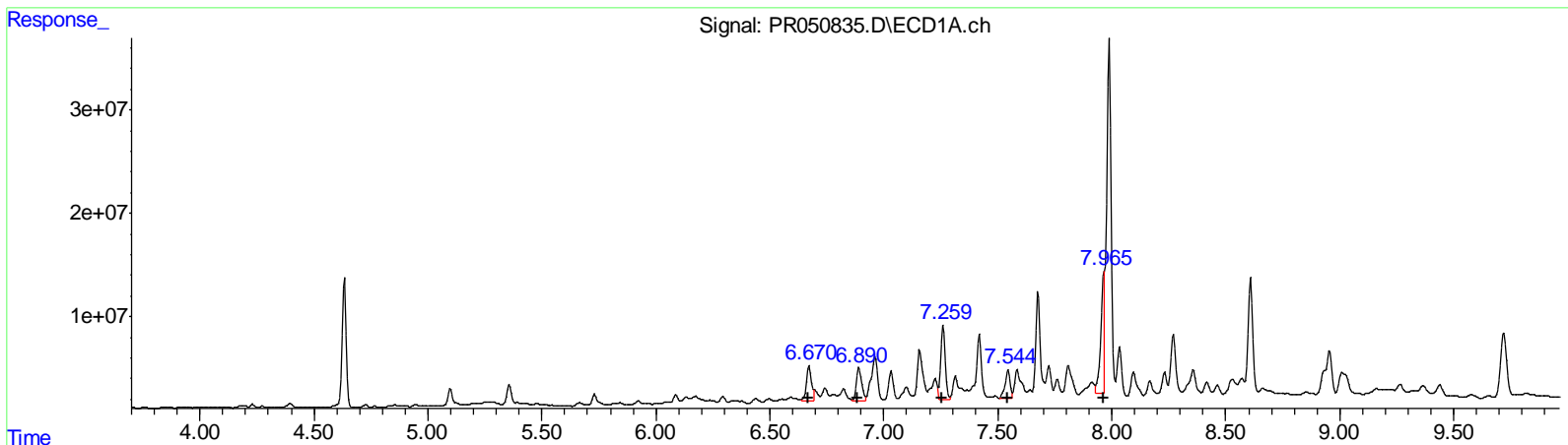
Instrument :
 ECD_R
 ClientSampled :
 BG5R5

Manual Integrations
 APPROVED

Ankita
 6/15/2021 4:25:16 PM

Integration File signal 1: autoint1.e
 Integration File signal 2: autoint2.e
 Quant Time: Jun 15 01:50:58 2021
 Quant Method : Z:\pestpcbsrv\HPCHEM1\ECD_R\Method\PR060121CLP.M
 Quant Title : GC EXTRACTABLES
 QLast Update : Wed Jun 02 05:07:41 2021
 Response via : Initial Calibration
 Integrator: ChemStation

Volume Inj. : 1 µl
 Signal #1 Phase : ZB MR1 Signal #2 Phase: ZB MR2
 Signal #1 Info : 30Mx0.32mmx 0.5µm Signal #2 Info : 30M x 0.32mm x 0.25µm



QEdit

(26) AR-1254-1 #2 (L6)			
R.T.	Response	Conc	
6.67	49322103	113.53	
6.89	53273258	77.26	
7.26	98256584	128.55	
7.54	42781036	73.89	
7.97	132761972	210.58	
(26) AR-1254-1 #2 (L6)			
R.T.	Response	Conc	
5.70	57149590	92.84	
5.85	40681447	75.60	
6.25	145338827	152.57	
6.48	26698491	44.88	
6.89	652793815	749.74	

(+) = Expected Retention Time

Quantitation Report (QT Reviewed)

Data Path : Z:\pestpcbsrv\HPCHEM1\ECD_R\Data\PR061421\
 Data File : PR050835.D
 Signal(s) : Signal #1: ECD1A.ch Signal #2: ECD2B.ch
 Acq On : 14 Jun 2021 20:30
 Operator : DD\AJ
 Sample : M2596-16
 Misc :
 ALS Vial : 27 Sample Multiplier: 1

Instrument :
 ECD_R
 ClientSampleId :
 BG5R5

Manual Integrations
 APPROVED

Ankita
 6/15/2021 4:25:16 PM

Integration File signal 1: autoint1.e
 Integration File signal 2: autoint2.e
 Quant Time: Jun 15 01:50:58 2021
 Quant Method : Z:\pestpcbsrv\HPCHEM1\ECD_R\Method\PR060121CLP.M
 Quant Title : GC EXTRACTABLES
 QLast Update : Wed Jun 02 05:07:41 2021
 Response via : Initial Calibration
 Integrator: ChemStation

Volume Inj. : 1 µl
 Signal #1 Phase : ZB MR1 Signal #2 Phase: ZB MR2
 Signal #1 Info : 30Mx0.32mmx 0.5µm Signal #2 Info : 30M x 0.32mm x 0.25µm

Compound	RT#1	RT#2	Resp#1	Resp#2	ng/ml	ng/ml

System Monitoring Compounds						
1) SA Tetrachlo...	4.633	3.816	148.2E6	184.1E6	23.223	28.307
2) SA Decachlor...	10.507	8.839	359.0E6	327.2E6	49.411	42.197
Target Compounds						
26) L6 AR-1254-1	6.670	5.701	49322103	57149590	113.531m	92.844m
27) L6 AR-1254-2	6.890	5.850	53273258	40681447	77.259	75.600
28) L6 AR-1254-3	7.259	6.251	98256584	145.3E6	128.546	152.571
29) L6 AR-1254-4	7.545	6.476	42781036	26698491	73.886	44.883 #
30) L6 AR-1254-5	7.965	6.891	132.8E6	652.8E6	210.584m	749.742 #
31) L7 AR-1260-1	7.418	6.379	102.5E6	98901545	288.327	245.860
32) L7 AR-1260-2	7.676	6.566	142.5E6	107.0E6	329.770	219.255 #
33) L7 AR-1260-3	8.034	6.719	65477337	102.7E6	202.519	219.775
34) L7 AR-1260-4	8.269	7.190	85060116	77708174	221.408	194.738
35) L7 AR-1260-5	8.608	7.430	161.9E6	222.3E6	202.014	228.252

AD
 C/10/21

(f)=RT Delta > 1/2 Window (#)=Amounts differ by > 25% (m)=manual int.