

Data Path : Z:\pestpcbsrv\HPCHEM1\ECD_R\Data\PR061719\
 Data File : PR038714.D
 Signal(s) : Signal #1: ECD1A.ch Signal #2: ECD2B.ch
 Acq On : 17 Jun 2019 18:18
 Operator : SM\MA
 Sample : K3366-04
 Misc :
 ALS Vial : 15 Sample Multiplier: 1

Instrument :
 ECD_R
 ClientSampleId :
 BRANCH-LEAVES

Integration File signal 1: autoint1.e
 Integration File signal 2: autoint2.e
 Quant Time: Jun 18 01:21:46 2019
 Quant Method : Z:\pestpcbsrv\HPCHEM1\ECD_R\Method\PR061119.M
 Quant Title : GC EXTRACTABLES
 QLast Update : Wed Jun 12 02:00:42 2019
 Response via : Initial Calibration
 Integrator: ChemStation

Volume Inj. : 2 µl
 Signal #1 Phase : ZB-MR1 Signal #2 Phase: ZB-MR2
 Signal #1 Info : 30Mx0.32mmx 0.50µ Signal #2 Info : 30M x 0.32mm x 0.25µm

| Compound | RT#1 | RT#2 | Resp#1 | Resp#2 | ng/ml | ng/ml |
|----------|------|------|--------|--------|-------|-------|
|----------|------|------|--------|--------|-------|-------|

 System Monitoring Compounds

| | | | | | | |
|--------------------|-------|--------|----------|----------|--------|--------|
| 1) SA Tetrachlo... | 3.772 | 4.620 | 37675319 | 110.6E6 | 25.821 | 22.180 |
| 2) SA Decachlor... | 8.725 | 10.369 | 27788440 | 90209424 | 12.178 | 14.554 |

Target Compounds

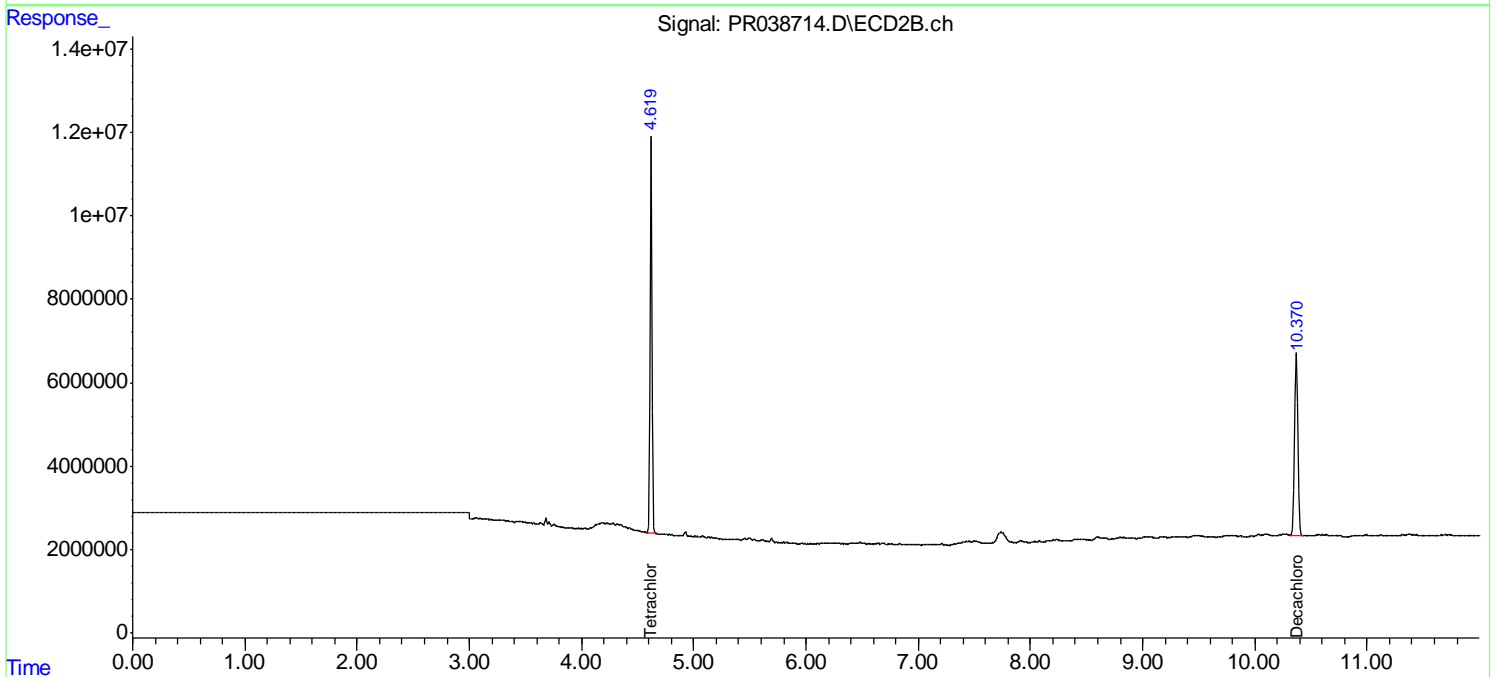
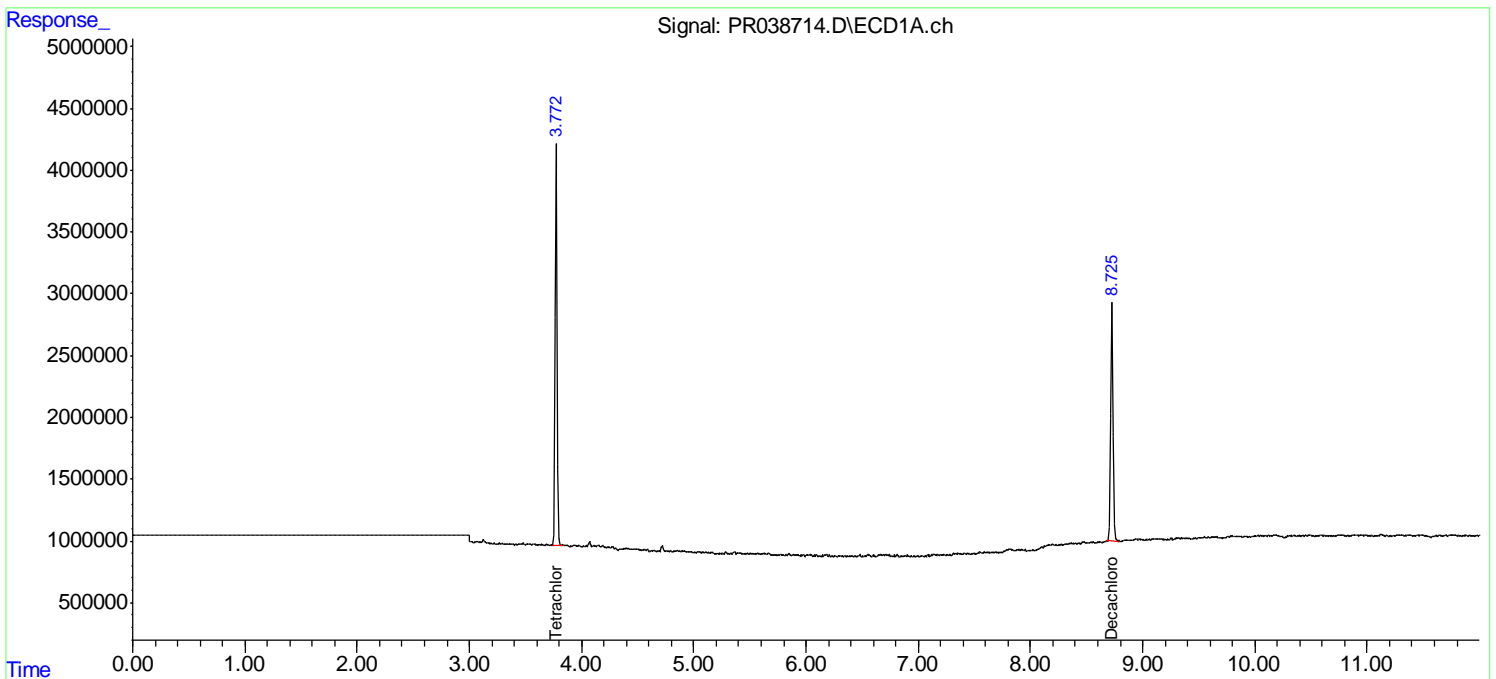
(f)=RT Delta > 1/2 Window (#)=Amounts differ by > 25% (m)=manual int.

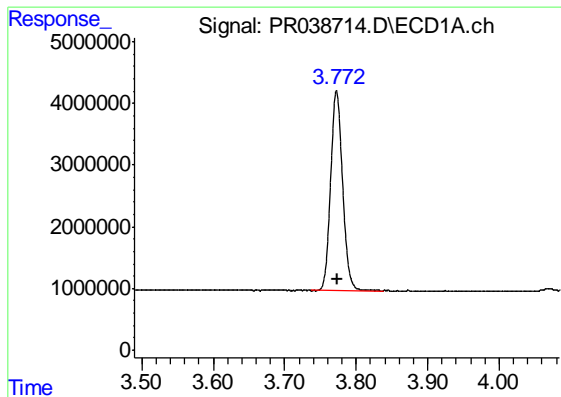
Data Path : Z:\pestpcbsrv\HPCHEM1\ECD_R\Data\PR061719\
 Data File : PR038714.D
 Signal(s) : Signal #1: ECD1A.ch Signal #2: ECD2B.ch
 Acq On : 17 Jun 2019 18:18
 Operator : SM\MA
 Sample : K3366-04
 Misc :
 ALS Vial : 15 Sample Multiplier: 1

Instrument :
 ECD_R
Client Sampled :
 BRANCH-LEAVES

Integration File signal 1: autoint1.e
 Integration File signal 2: autoint2.e
 Quant Time: Jun 18 01:21:46 2019
 Quant Method : Z:\pestpcbsrv\HPCHEM1\ECD_R\Method\PR061119.M
 Quant Title : GC EXTRACTABLES
 QLast Update : Wed Jun 12 02:00:42 2019
 Response via : Initial Calibration
 Integrator: ChemStation

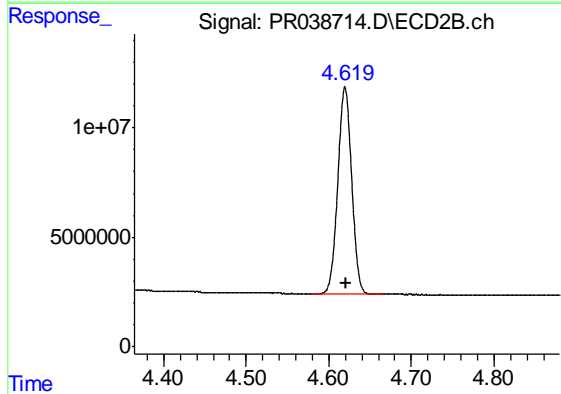
Volume Inj. : 2 µl
 Signal #1 Phase : ZB-MR1 Signal #2 Phase: ZB-MR2
 Signal #1 Info : 30Mx0.32mmx 0.50µ Signal #2 Info : 30M x 0.32mm x 0.25µm



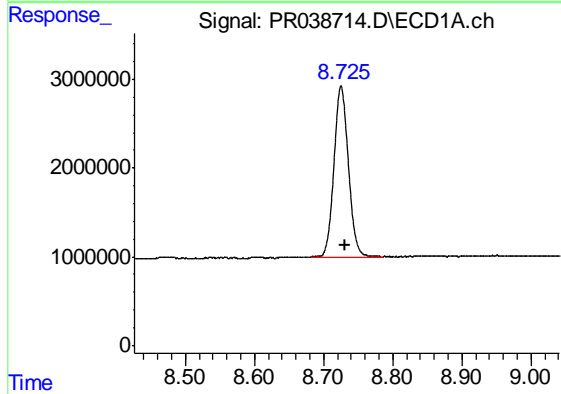


#1 Tetrachloro-m-xylene
 R.T.: 3.772 min
 Delta R.T.: 0.000 min
 Response: 37675319
 Conc: 25.82 ng/ml

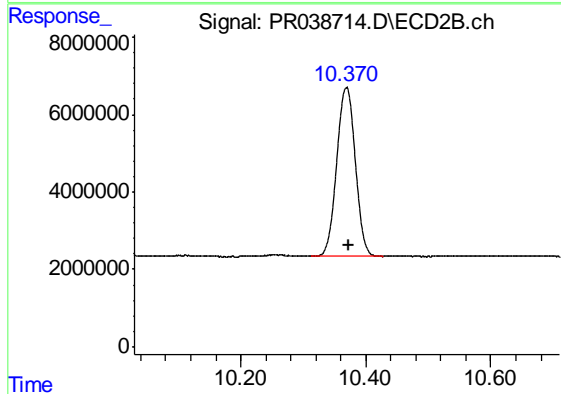
Instrument :
 ECD_R
 ClientSampleId :
 BRANCH-LEAVES



#1 Tetrachloro-m-xylene
 R.T.: 4.620 min
 Delta R.T.: -0.001 min
 Response: 110579055
 Conc: 22.18 ng/ml



#2 Decachlorobiphenyl
 R.T.: 8.725 min
 Delta R.T.: -0.007 min
 Response: 27788440
 Conc: 12.18 ng/ml



#2 Decachlorobiphenyl
 R.T.: 10.369 min
 Delta R.T.: -0.004 min
 Response: 90209424
 Conc: 14.55 ng/ml