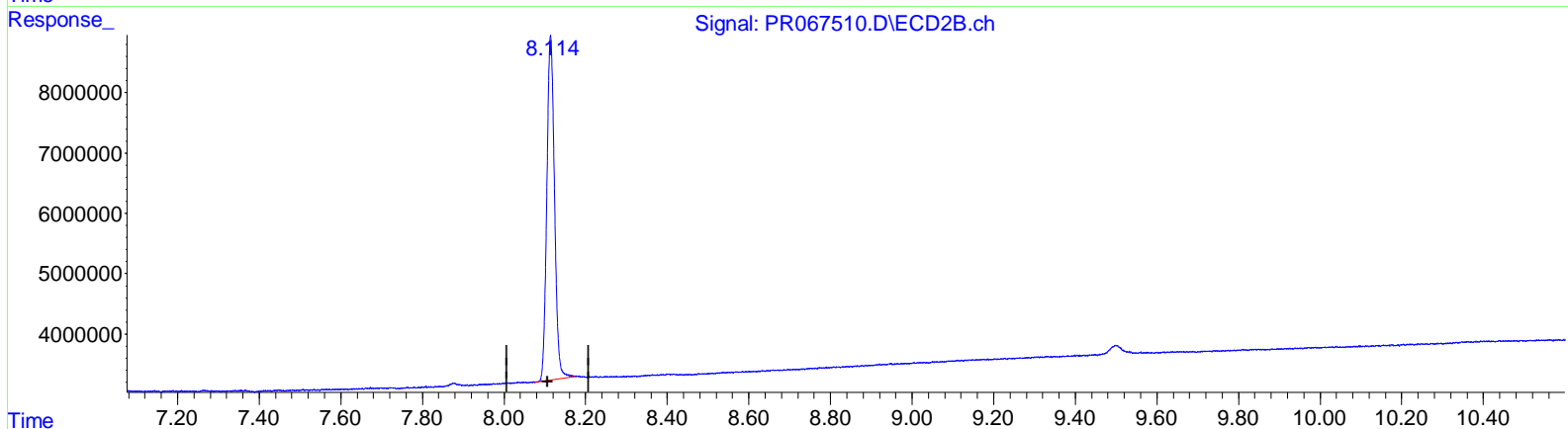
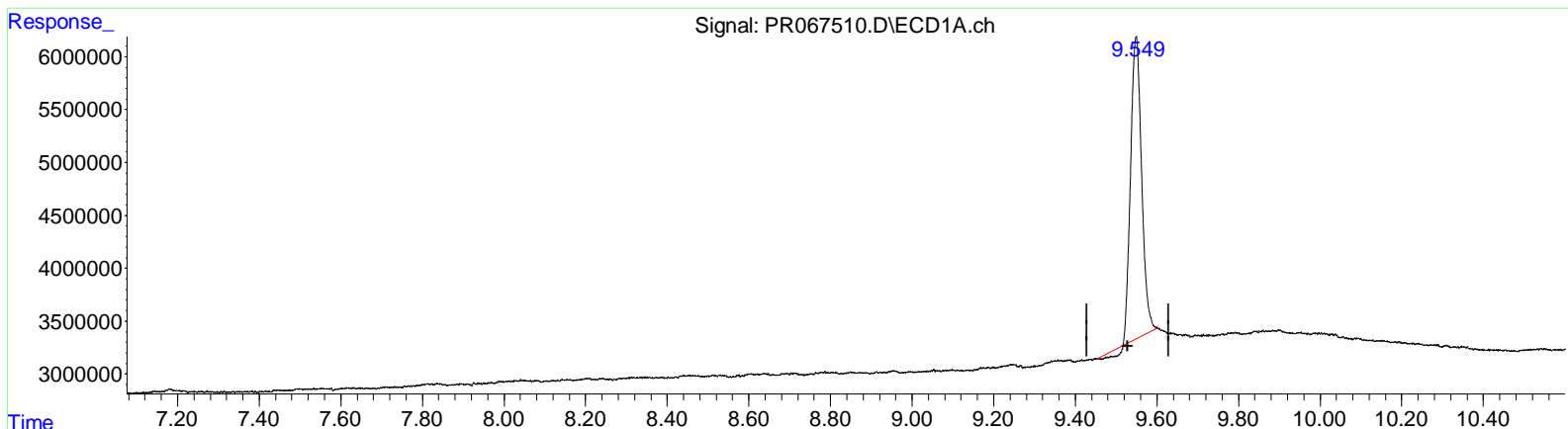


Data Path : Z:\pestpcbsrv\HPCHEM1\ECD_R\Data\PR062124\
 Data File : PR067510.D
 Signal(s) : Signal #1: ECD1A.ch Signal #2: ECD2B.ch
 Acq On : 21 Jun 2024 16:50
 Operator : AJ\MA
 Sample : PB161646BL
 Misc :
 ALS Vial : 7 Sample Multiplier: 1

Integration File signal 1: autoint1.e
 Integration File signal 2: autoint2.e
 Quant Time: Jun 22 00:57:40 2024
 Quant Method : Z:\pestpcbsrv\HPCHEM1\ECD_R\Method\PR061724CLP.M
 Quant Title : GC EXTRACTABLES
 QLast Update : Tue Jun 18 06:45:28 2024
 Response via : Initial Calibration
 Integrator: ChemStation

Volume Inj. : 1 µl
 Signal #1 Phase : ZB MR1 Signal #2 Phase: ZB MR2
 Signal #1 Info : 30Mx0.32mmx 0.5µm Signal #2 Info : 30M x 0.32mm x 0.25µm



QEdit

(2) Decachlorobiphenyl (SA)

9.549min 36.596 ng/ml

response 52304092

(2) Decachlorobiphenyl #2 (SA)

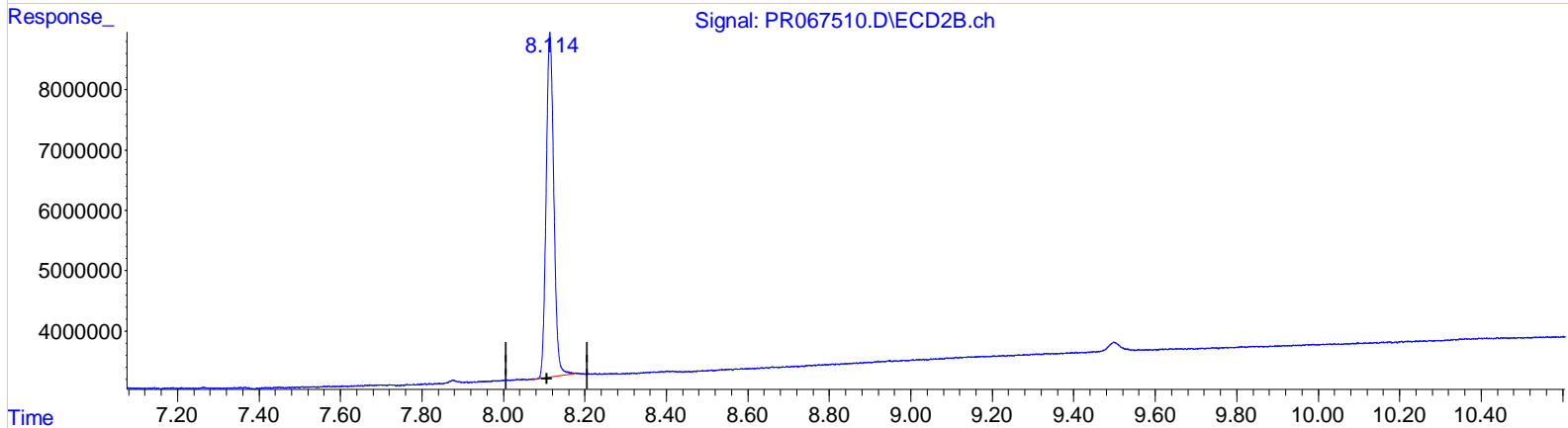
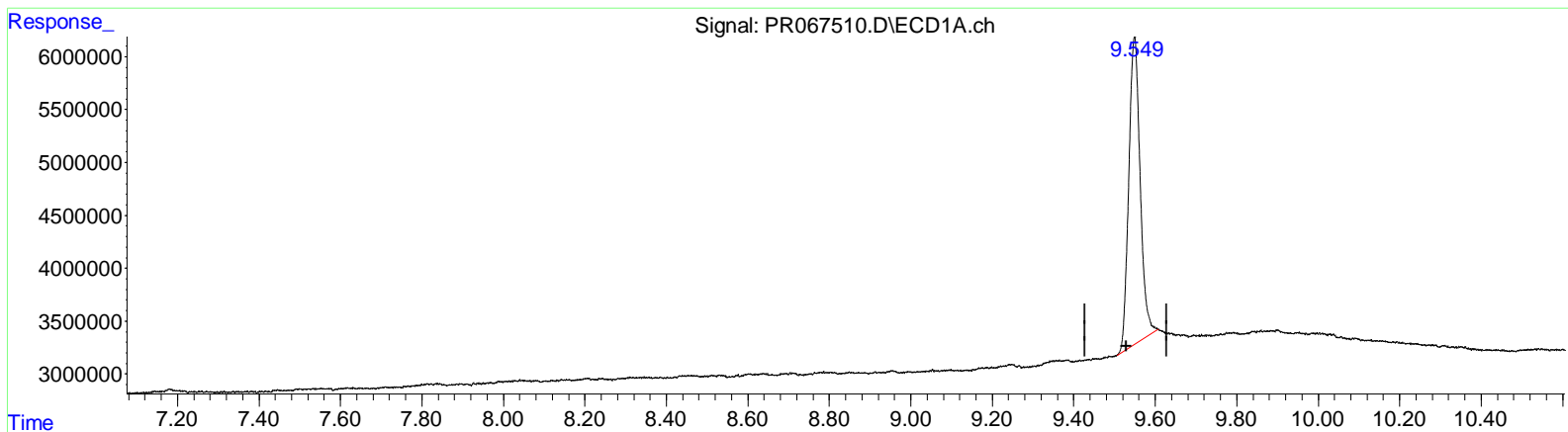
8.114min 41.200 ng/ml

response 74164787

Data Path : Z:\pestpcbsrv\HPCHEM1\ECD_R\Data\PR062124\
 Data File : PR067510.D
 Signal(s) : Signal #1: ECD1A.ch Signal #2: ECD2B.ch
 Acq On : 21 Jun 2024 16:50
 Operator : AJ\MA
 Sample : PB161646BL
 Misc :
 ALS Vial : 7 Sample Multiplier: 1

Integration File signal 1: autoint1.e
 Integration File signal 2: autoint2.e
 Quant Time: Jun 22 00:57:40 2024
 Quant Method : Z:\pestpcbsrv\HPCHEM1\ECD_R\Method\PR061724CLP.M
 Quant Title : GC EXTRACTABLES
 QLast Update : Tue Jun 18 06:45:28 2024
 Response via : Initial Calibration
 Integrator: ChemStation

Volume Inj. : 1 µl
 Signal #1 Phase : ZB MR1 Signal #2 Phase: ZB MR2
 Signal #1 Info : 30Mx0.32mmx 0.5µm Signal #2 Info : 30M x 0.32mm x 0.25µm



QEdit

(2) Decachlorobiphenyl (SA)

9.549min 39.423 ng/ml m

response 56344583

(2) Decachlorobiphenyl #2 (SA)

8.114min 41.200 ng/ml

response 74164787