

Data Path : Z:\pestpcbsrv\HPCHEM1\ECD_R\Data\PR062222\
 Data File : PR054884.D
 Signal(s) : Signal #1: ECD1A.ch Signal #2: ECD2B.ch
 Acq On : 22 Jun 2022 23:05
 Operator : AJ\MA
 Sample : AR1254ICC200
 Misc :
 ALS Vial : 29 Sample Multiplier: 1

Instrument :
 ECD_R
 ClientSampleId :

Integration File signal 1: autoint1.e
 Integration File signal 2: autoint2.e
 Quant Time: Jun 23 09:24:22 2022
 Quant Method : Z:\pestpcbsrv\HPCHEM1\ECD_R\Method\PR062222CLP.M
 Quant Title : GC EXTRACTABLES
 QLast Update : Thu Jun 23 09:23:04 2022
 Response via : Initial Calibration
 Integrator: ChemStation

Volume Inj. : 1 µl
 Signal #1 Phase : ZB MR1 Signal #2 Phase: ZB MR2
 Signal #1 Info : 30Mx0.32mmx 0.5µm Signal #2 Info : 30M x 0.32mm x 0.25µm

Compound	RT#1	RT#2	Resp#1	Resp#2	ng/ml	ng/ml

System Monitoring Compounds						
1) SA Tetrachlo...	3.646	2.922	44153986	22757127	10.384	10.586
2) SA Decachlor...	9.533	8.144	34486474	36734311	21.840	21.226
Target Compounds						
26) L6 AR-1254-1	5.771	4.857	21539177	22108436	225.184	211.166
27) L6 AR-1254-2	6.008	5.015	30282182	19571568	223.493	214.919
28) L6 AR-1254-3	6.399	5.434	29658095	30765312	222.944	208.372
29) L6 AR-1254-4	6.709	5.679	21202738	19001983	220.632	209.220
30) L6 AR-1254-5	7.165	6.121	22029455	27728517	220.390	210.335

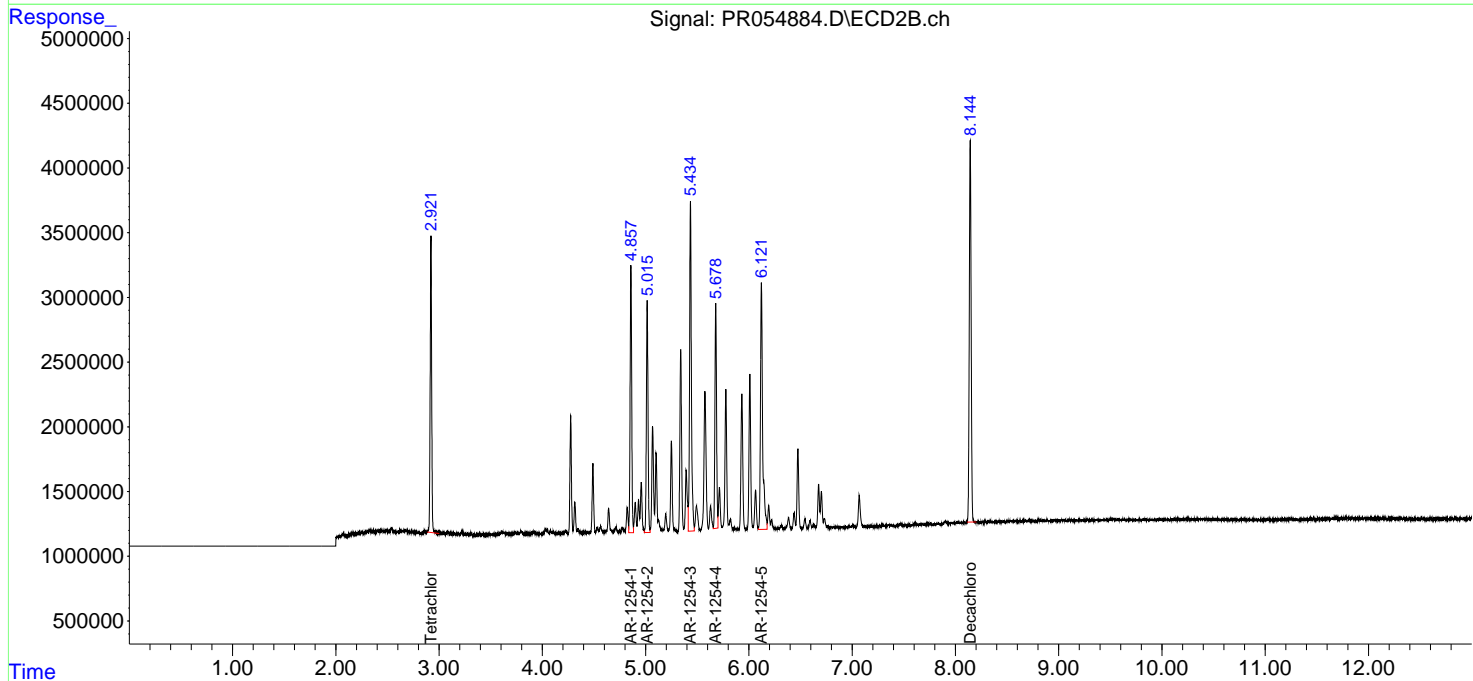
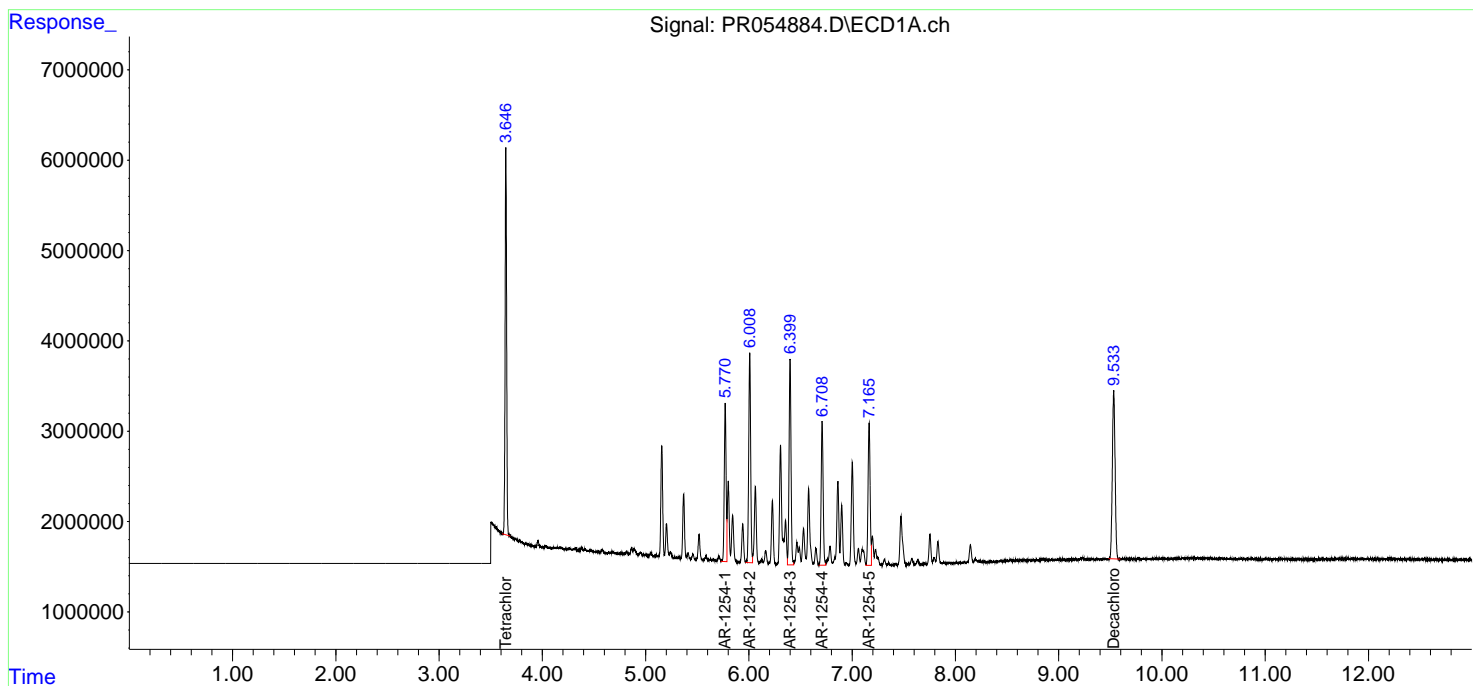
(f)=RT Delta > 1/2 Window (#)=Amounts differ by > 25% (m)=manual int.

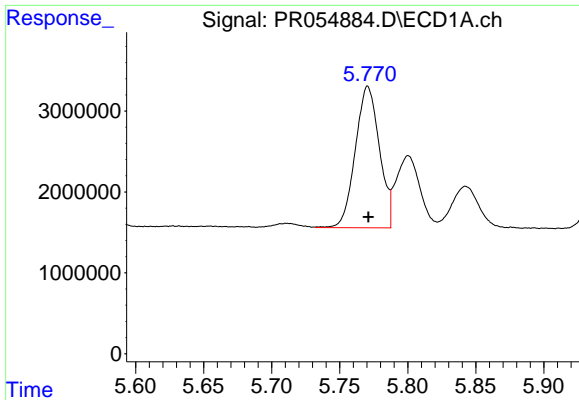
Data Path : Z:\pestpcbsrv\HPCHEM1\ECD_R\Data\PR062222\
 Data File : PR054884.D
 Signal(s) : Signal #1: ECD1A.ch Signal #2: ECD2B.ch
 Acq On : 22 Jun 2022 23:05
 Operator : AJ\MA
 Sample : AR1254ICC200
 Misc :
 ALS Vial : 29 Sample Multiplier: 1

Instrument :
 ECD_R
 ClientSampleId :

Integration File signal 1: autoint1.e
 Integration File signal 2: autoint2.e
 Quant Time: Jun 23 09:24:22 2022
 Quant Method : Z:\pestpcbsrv\HPCHEM1\ECD_R\Method\PR062222CLP.M
 Quant Title : GC EXTRACTABLES
 QLast Update : Thu Jun 23 09:23:04 2022
 Response via : Initial Calibration
 Integrator: ChemStation

Volume Inj. : 1 µl
 Signal #1 Phase : ZB MR1 Signal #2 Phase: ZB MR2
 Signal #1 Info : 30Mx0.32mmx 0.5µm Signal #2 Info : 30M x 0.32mm x 0.25µm

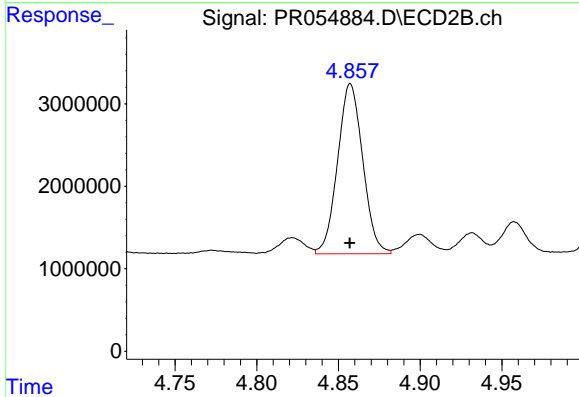




#26 AR-1254-1

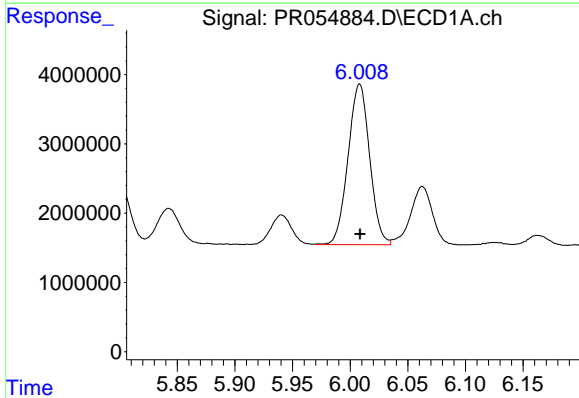
R.T.: 5.771 min
 Delta R.T.: 0.000 min
 Response: 21539177
 Conc: 225.18 ng/ml

Instrument :
 ECD_R
 ClientSampleId :



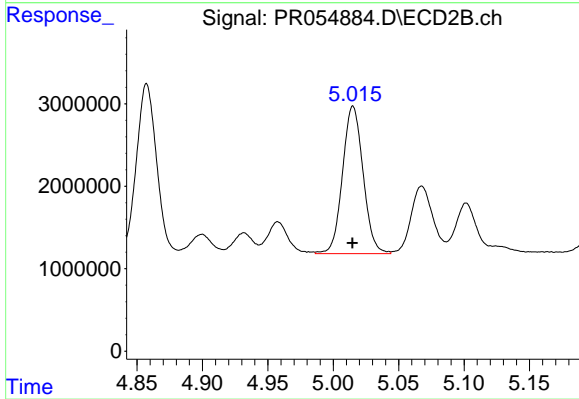
#26 AR-1254-1

R.T.: 4.857 min
 Delta R.T.: 0.000 min
 Response: 22108436
 Conc: 211.17 ng/ml



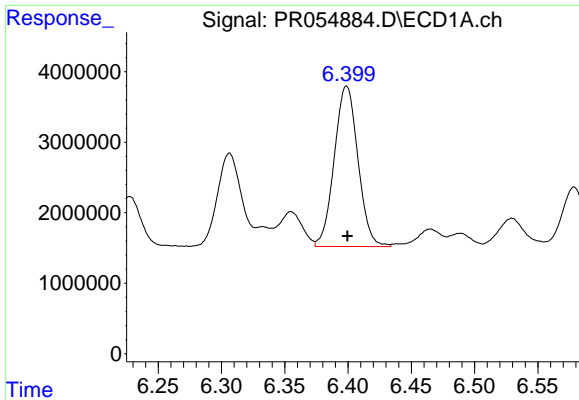
#27 AR-1254-2

R.T.: 6.008 min
 Delta R.T.: 0.000 min
 Response: 30282182
 Conc: 223.49 ng/ml



#27 AR-1254-2

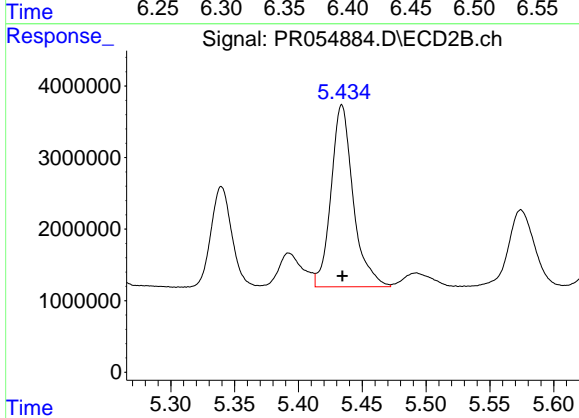
R.T.: 5.015 min
 Delta R.T.: 0.000 min
 Response: 19571568
 Conc: 214.92 ng/ml



#28 AR-1254-3

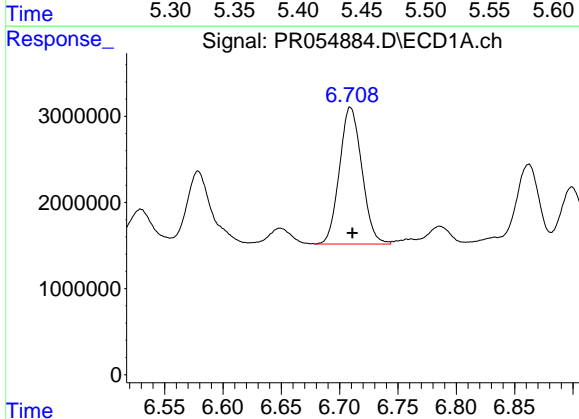
R.T.: 6.399 min
 Delta R.T.: 0.000 min
 Response: 29658095
 Conc: 222.94 ng/ml

Instrument :
 ECD_R
 ClientSampleId :



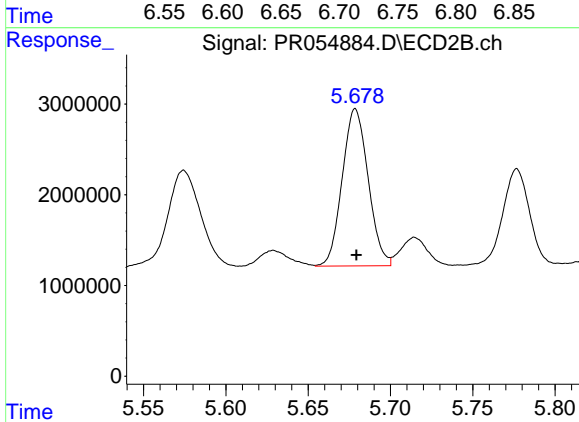
#28 AR-1254-3

R.T.: 5.434 min
 Delta R.T.: 0.000 min
 Response: 30765312
 Conc: 208.37 ng/ml



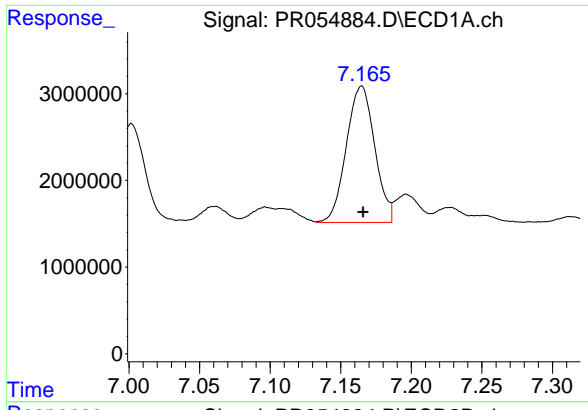
#29 AR-1254-4

R.T.: 6.709 min
 Delta R.T.: -0.002 min
 Response: 21202738
 Conc: 220.63 ng/ml



#29 AR-1254-4

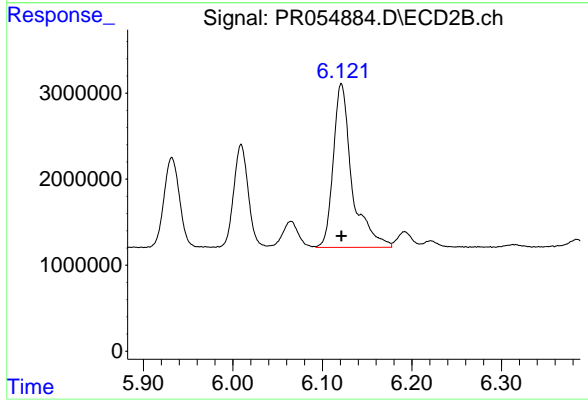
R.T.: 5.679 min
 Delta R.T.: 0.000 min
 Response: 19001983
 Conc: 209.22 ng/ml



#30 AR-1254-5

R.T.: 7.165 min
Delta R.T.: 0.000 min
Response: 22029455
Conc: 220.39 ng/ml

Instrument :
ECD_R
ClientSampleId :



#30 AR-1254-5

R.T.: 6.121 min
Delta R.T.: 0.000 min
Response: 27728517
Conc: 210.33 ng/ml