

Data Path : \\TERASTORAGE\Terastorage\pestpcbsrv\HPCHEM1\ECD_R\Data\PR062418\
 Data File : PR029274.D
 Signal(s) : Signal #1: ECD1A.ch Signal #2: ECD2B.ch
 Acq On : 19 Jun 2018 03:22 pm
 Operator : UA/SM
 Sample : J3508-04
 Misc :
 ALS Vial : 116 Sample Multiplier: 1

Instrument :
 ECD_R
 ClientSampled :

Integration File signal 1: autoint1.e
 Integration File signal 2: autoint2.e
 Quant Time: Jun 19 15:43:35 2018
 Quant Method : \\TERASTORAGE\Terastorage\pestpcbsrv\HPCHEM1\ECD_R\Method\PR062418.M
 Quant Title : GC EXTRACTABLES
 QLast Update : Tue Jun 19 13:41:09 2018
 Response via : Initial Calibration
 Integrator: ChemStation

Volume Inj. : 2 µl
 Signal #1 Phase : ZB-MR1 Signal #2 Phase: ZB-MR2
 Signal #1 Info : 30Mx0.32mmx 0.50µ Signal #2 Info : 30M x 0.32mm x 0.25µm

Compound	RT#1	RT#2	Resp#1	Resp#2	ng/ml	ng/ml
System Monitoring Compounds						
1) SA Tetrachlo...	4.578	3.727	467.0E6	944.5E6	18.785	22.279
2) SA Decachlor...	10.351	8.666	224.7E6	395.1E6	8.106	17.390 #
Target Compounds						
3) L1 AR-1016-1	5.500	4.566	147.0E6	132.9E6	238.992	99.890 #
4) L1 AR-1016-2	0.000	5.027	0	286.9E6	N.D.	201.858 #
5) L1 AR-1016-3	0.000	5.049	0	190.3E6	N.D.	133.476 #
6) L1 AR-1016-4	0.000	5.230	0	199.7E6	N.D.	124.726 #
7) L1 AR-1016-5	0.000	5.608	0	1539.8E6	N.D.	951.878 #
8) L2 AR-1221-1	0.000	3.925	0	18186344	N.D.	30.822 #
9) L2 AR-1221-2	0.000	4.022	0	18023172	N.D.	40.116 #
10) L2 AR-1221-3	0.000	4.067	0	13309635	N.D.	9.531 #
11) L3 AR-1232-1	0.000	4.067	0	13309635	N.D.	14.133 #
12) L3 AR-1232-2	5.500	5.027	147.0E6	286.9E6	521.522	433.708
13) L3 AR-1232-3	0.000	5.027	0	286.9E6	N.D.	576.758 #
14) L3 AR-1232-4	0.000	5.608	0	1539.8E6	N.D.	1980.579 #
15) L3 AR-1232-5	0.000	5.608	0	1539.8E6	N.D.	2509.546 #
16) L4 AR-1242-1	5.500	4.566	147.0E6	132.9E6	325.077	134.564 #
17) L4 AR-1242-2	0.000	4.795	0	140.8E6	N.D.	70.224 #
18) L4 AR-1242-3	0.000	5.027	0	286.9E6	N.D.	344.571 #
19) L4 AR-1242-4	0.000	5.049	0	190.3E6	N.D.	181.629 #
20) L4 AR-1242-5	0.000	5.248	0	236.6E6	N.D.	502.988 #
21) L5 AR-1248-1	6.085	5.027	172.1E6	286.9E6	213.855	181.615
22) L5 AR-1248-2	0.000	5.100	0	396.0E6	N.D.	643.293 #
23) L5 AR-1248-3	6.584	5.248	408.0E6	236.6E6	513.215	116.886 #
24) L5 AR-1248-4	0.000	5.608	0	1539.8E6	N.D.	506.811 #
25) L5 AR-1248-5	0.000	5.608	0	1539.8E6	N.D.	720.523 #
26) L6 AR-1254-1	0.000	5.027	0	286.9E6	N.D.	233.797 #
27) L6 AR-1254-2	0.000	5.726	0	237.0E6	N.D.	81.689 #
28) L6 AR-1254-3	7.169	6.141	134.3E6	224.9E6	75.532	46.402 #
29) L6 AR-1254-4	7.409	6.345	14554198	157.2E6	10.609	42.067 #
30) L6 AR-1254-5	0.000	6.764	0	223.7E6	N.D.	58.694 #
31) L7 AR-1260-1	0.000	6.253	0	244.5E6	N.D.	72.612 #
32) L7 AR-1260-2	0.000	6.435	0	763.6E6	N.D.	183.441 #
33) L7 AR-1260-3	0.000	6.764	0	223.7E6	N.D.	59.221 #
34) L7 AR-1260-4	0.000	7.055	0	379.3E6	N.D.	177.802 #
35) L7 AR-1260-5	0.000	7.294	0	337.4E6	N.D.	76.242 #
36) L8 AR-1262-1	0.000	6.253	0	244.5E6	N.D.	86.161 #
37) L8 AR-1262-2	0.000	6.435	0	763.6E6	N.D.	218.163 #
38) L8 AR-1262-3	0.000	6.799	0	191.5E6	N.D.	40.021 #
39) L8 AR-1262-4	0.000	7.055	0	379.3E6	N.D.	116.878 #
40) L8 AR-1262-5	0.000	7.294	0	337.4E6	N.D.	59.726 #
41) L9 AR-1268-1	0.000	7.637	0	1556.1E6	N.D.	360.404 #

Data Path : \\TERASTORAGE\Terastorage\pestpcbsrv\HPCHEM1\ECD_R\Data\PR062418\
 Data File : PR029274.D
 Signal(s) : Signal #1: ECD1A.ch Signal #2: ECD2B.ch
 Acq On : 19 Jun 2018 03:22 pm
 Operator : UA/SM
 Sample : J3508-04
 Misc :
 ALS Vial : 116 Sample Multiplier: 1

Instrument :
 ECD_R
 ClientSampleId :

Integration File signal 1: autoint1.e
 Integration File signal 2: autoint2.e
 Quant Time: Jun 19 15:43:35 2018
 Quant Method : \\TERASTORAGE\Terastorage\pestpcbsrv\HPCHEM1\ECD_R\Method\PR062418.M
 Quant Title : GC EXTRACTABLES
 QLast Update : Tue Jun 19 13:41:09 2018
 Response via : Initial Calibration
 Integrator: ChemStation

Volume Inj. : 2 µl
 Signal #1 Phase : ZB-MR1 Signal #2 Phase: ZB-MR2
 Signal #1 Info : 30Mx0.32mmx 0.50µ Signal #2 Info : 30M x 0.32mm x 0.25µm

	Compound	RT#1	RT#2	Resp#1	Resp#2	ng/ml	ng/ml
42)	L9 AR-1268-2	0.000	7.637	0	1556.1E6	N.D.	414.789 #
43)	L9 AR-1268-3	0.000	7.874	0	87833725	N.D.	30.554 #
44)	L9 AR-1268-4	0.000	8.132	0	224.5E6	N.D.	187.220 #
45)	L9 AR-1268-5	0.000	8.370	0	100.2E6	N.D.	13.386 #

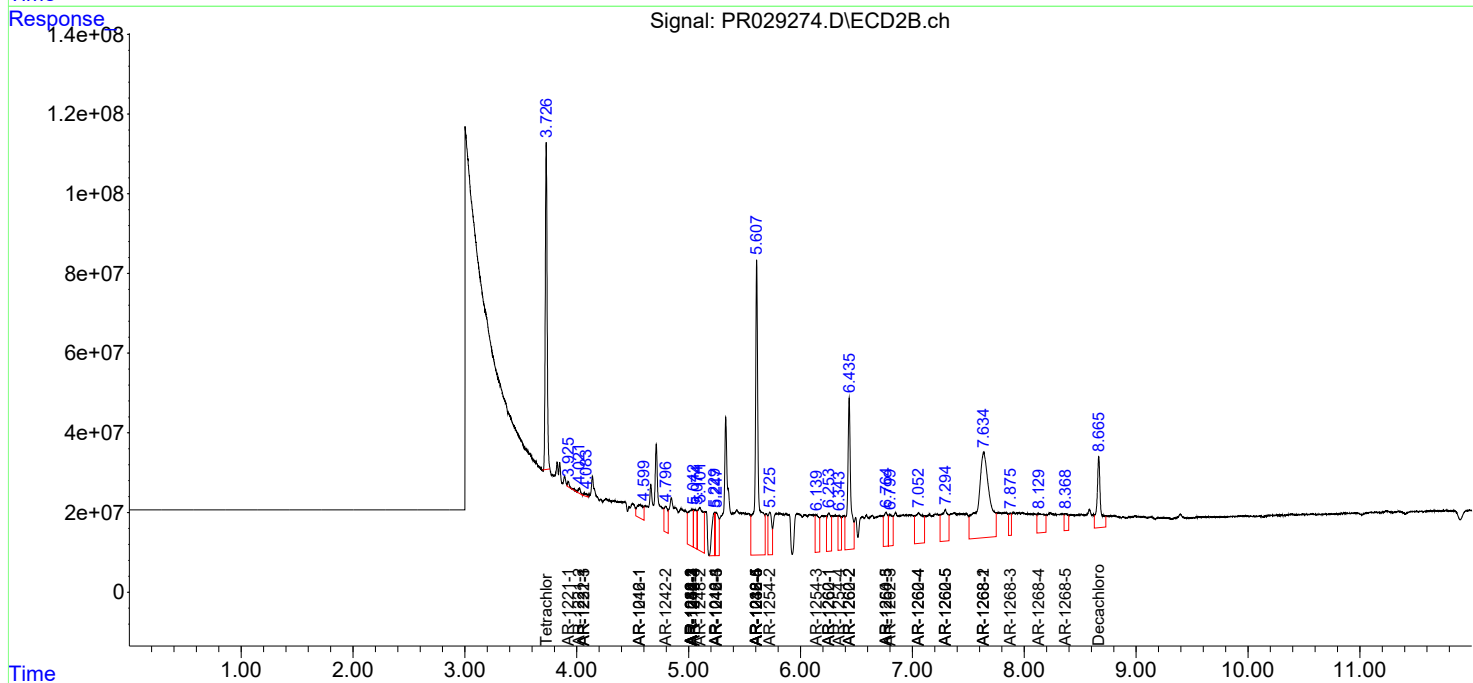
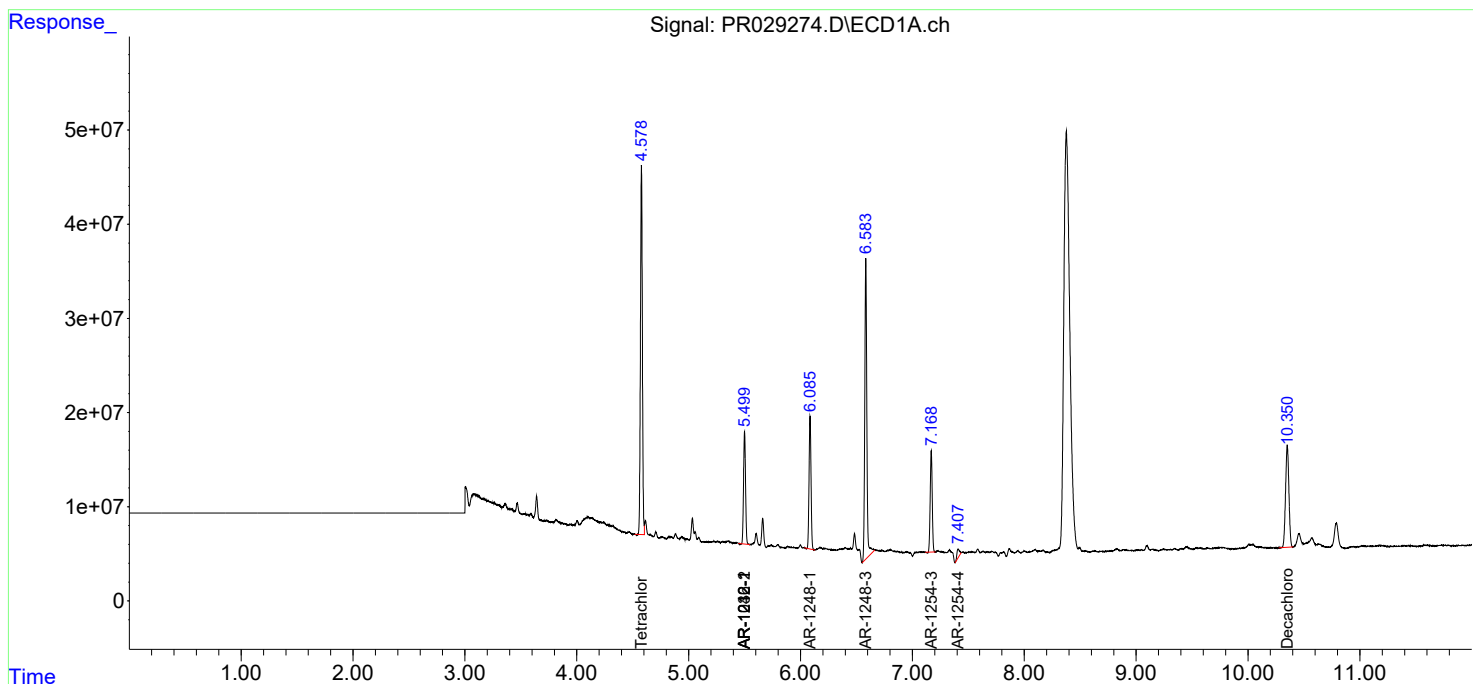
(f)=RT Delta > 1/2 Window (#)=Amounts differ by > 25% (m)=manual int.

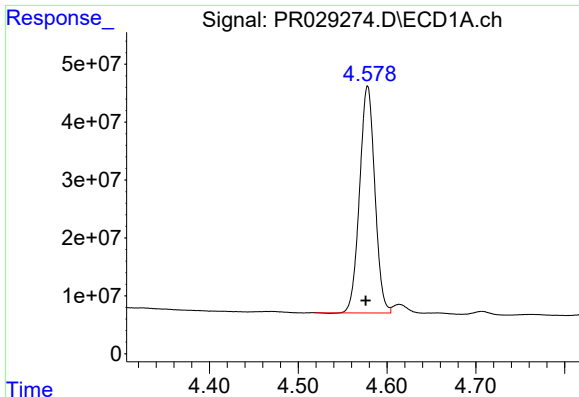
Data Path : \\TERASTORAGE\Terastorage\pestpcbsrv\HPCHEM1\ECD_R\Data\PR062418\
 Data File : PR029274.D
 Signal(s) : Signal #1: ECD1A.ch Signal #2: ECD2B.ch
 Acq On : 19 Jun 2018 03:22 pm
 Operator : UA/SM
 Sample : J3508-04
 Misc :
 ALS Vial : 116 Sample Multiplier: 1

Instrument :
 ECD_R
 ClientSampled :

Integration File signal 1: autoint1.e
 Integration File signal 2: autoint2.e
 Quant Time: Jun 19 15:43:35 2018
 Quant Method : \\TERASTORAGE\Terastorage\pestpcbsrv\HPCHEM1\ECD_R\Method\PR062418.M
 Quant Title : GC EXTRACTABLES
 QLast Update : Tue Jun 19 13:41:09 2018
 Response via : Initial Calibration
 Integrator: ChemStation

Volume Inj. : 2 µl
 Signal #1 Phase : ZB-MR1 Signal #2 Phase: ZB-MR2
 Signal #1 Info : 30Mx0.32mmx 0.50µ Signal #2 Info : 30M x 0.32mm x 0.25µm

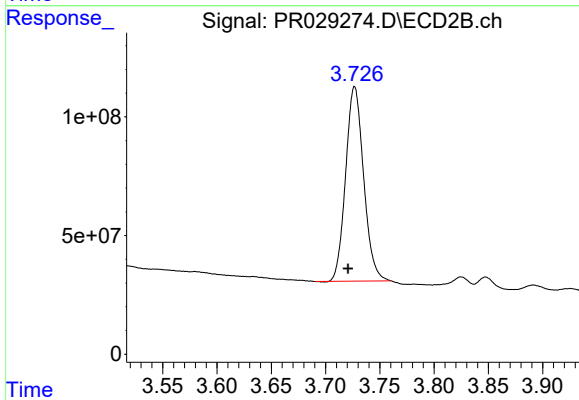




#1 Tetrachloro-m-xylene

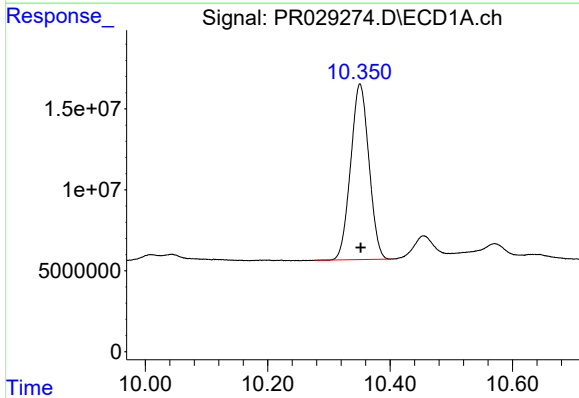
R.T.: 4.578 min
 Delta R.T.: 0.002 min
 Response: 467035981
 Conc: 18.78 ng/ml

Instrument :
 ECD_R
 ClientSampled :



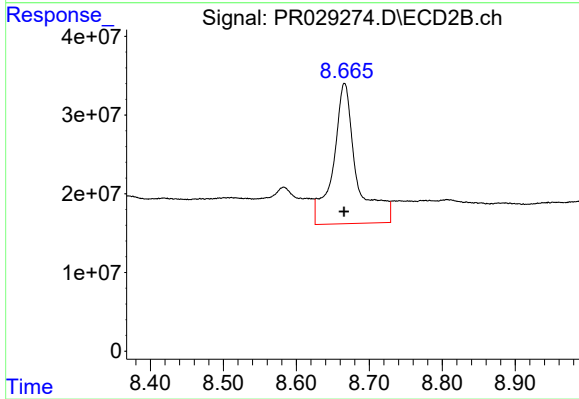
#1 Tetrachloro-m-xylene

R.T.: 3.727 min
 Delta R.T.: 0.006 min
 Response: 944538935
 Conc: 22.28 ng/ml



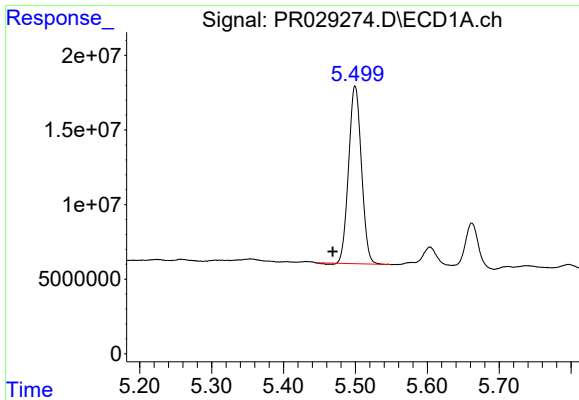
#2 Decachlorobiphenyl

R.T.: 10.351 min
 Delta R.T.: -0.001 min
 Response: 224696308
 Conc: 8.11 ng/ml



#2 Decachlorobiphenyl

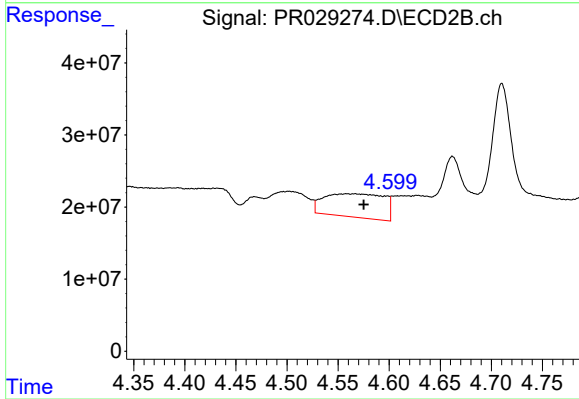
R.T.: 8.666 min
 Delta R.T.: 0.000 min
 Response: 395125790
 Conc: 17.39 ng/ml



#3 AR-1016-1

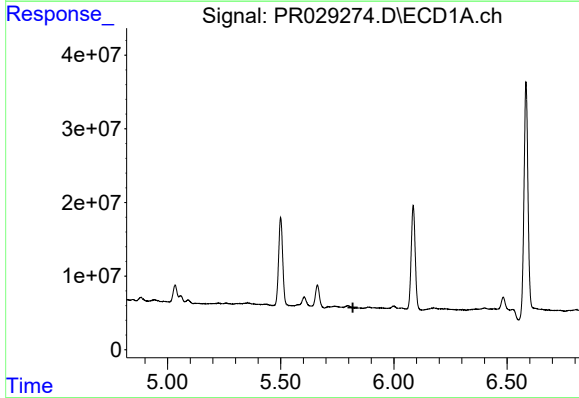
R.T.: 5.500 min
 Delta R.T.: 0.031 min
 Response: 147006102
 Conc: 238.99 ng/ml

Instrument :
 ECD_R
 ClientSampleId :



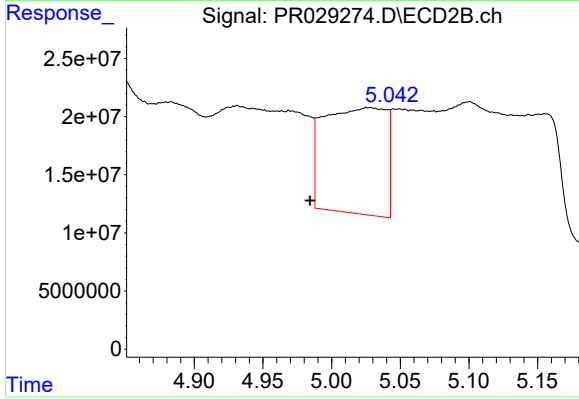
#3 AR-1016-1

R.T.: 4.566 min
 Delta R.T.: -0.009 min
 Response: 132937986
 Conc: 99.89 ng/ml



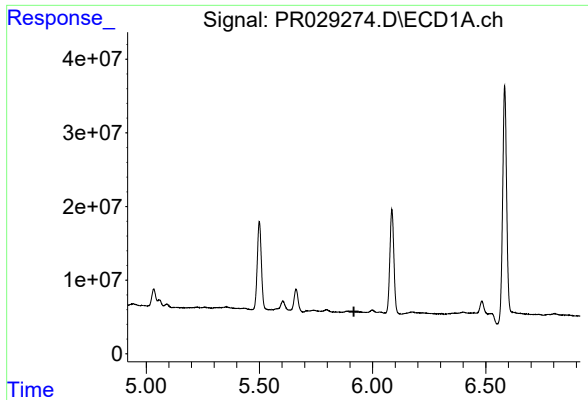
#4 AR-1016-2

R.T.: 0.000 min
 Exp R.T. : 5.819 min
 Response: 0
 Conc: N.D.



#4 AR-1016-2

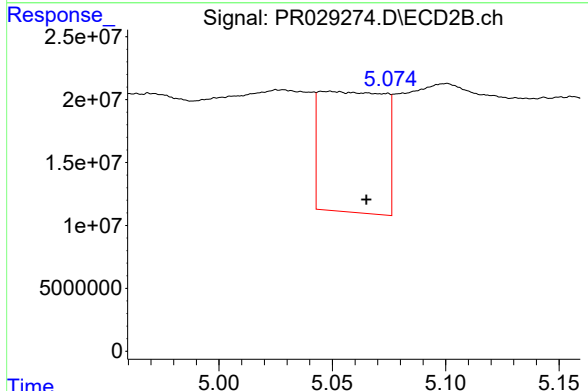
R.T.: 5.027 min
 Delta R.T.: 0.043 min
 Response: 286904861
 Conc: 201.86 ng/ml



#5 AR-1016-3

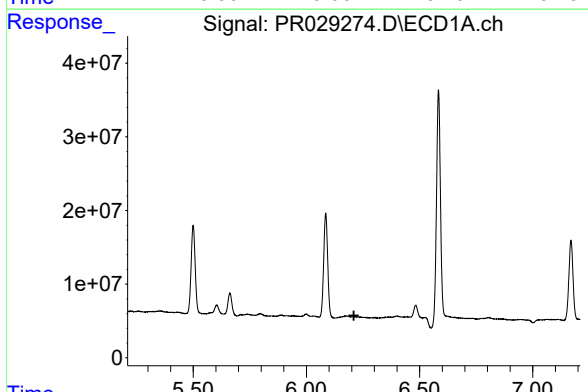
R.T.: 0.000 min
 Exp R.T.: 5.918 min
 Response: 0
 Conc: N.D.

Instrument :
 ECD_R
 ClientSampleId :



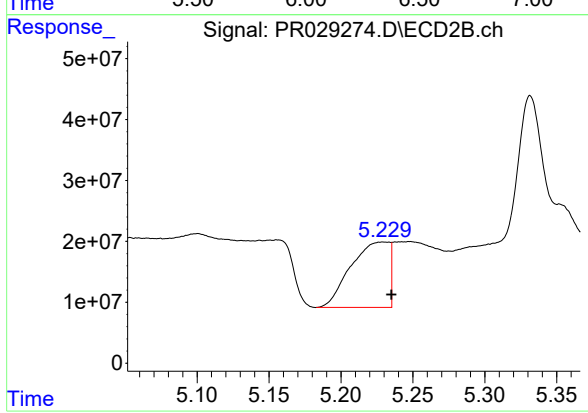
#5 AR-1016-3

R.T.: 5.049 min
 Delta R.T.: -0.016 min
 Response: 190259275
 Conc: 133.48 ng/ml



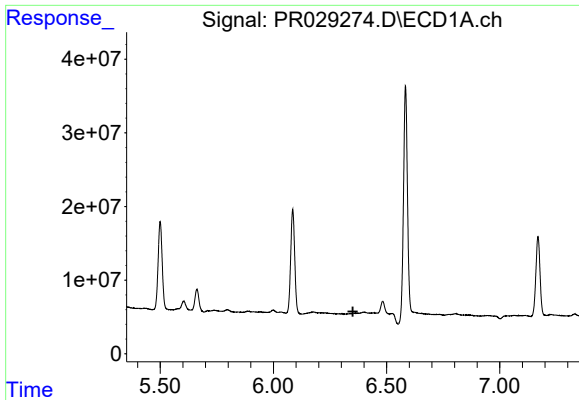
#6 AR-1016-4

R.T.: 0.000 min
 Exp R.T.: 6.210 min
 Response: 0
 Conc: N.D.



#6 AR-1016-4

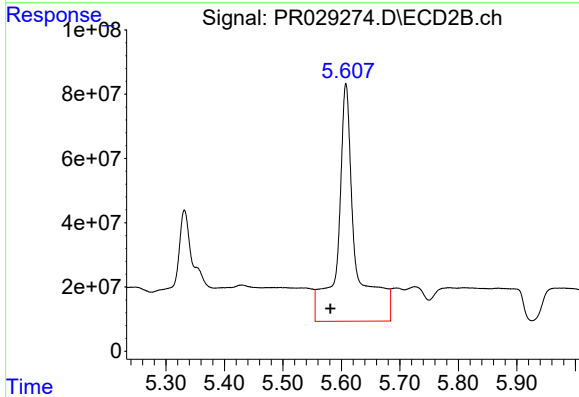
R.T.: 5.230 min
 Delta R.T.: -0.006 min
 Response: 199669133
 Conc: 124.73 ng/ml



#7 AR-1016-5

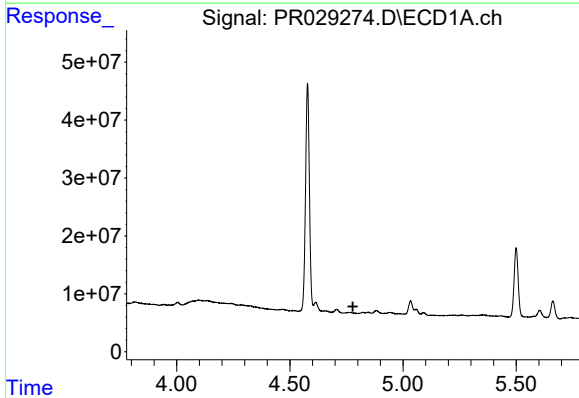
R.T.: 0.000 min
 Exp R.T. : 6.351 min
 Response: 0
 Conc: N.D.

Instrument :
 ECD_R
 ClientSampled :



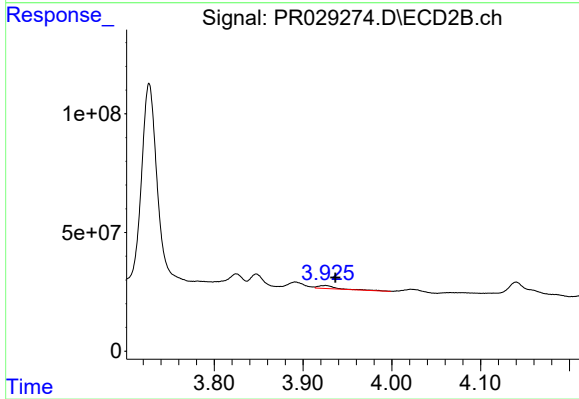
#7 AR-1016-5

R.T.: 5.608 min
 Delta R.T.: 0.027 min
 Response: 1539750104
 Conc: 951.88 ng/ml



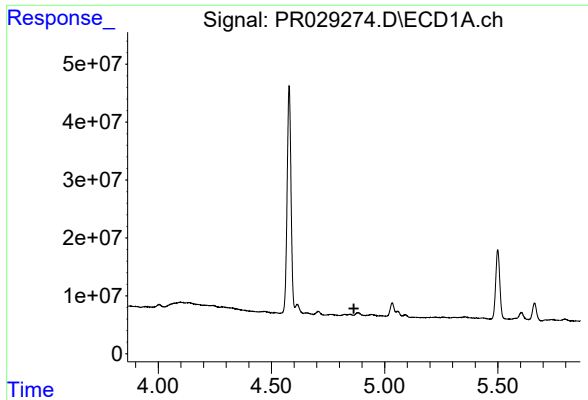
#8 AR-1221-1

R.T.: 0.000 min
 Exp R.T. : 4.778 min
 Response: 0
 Conc: N.D.



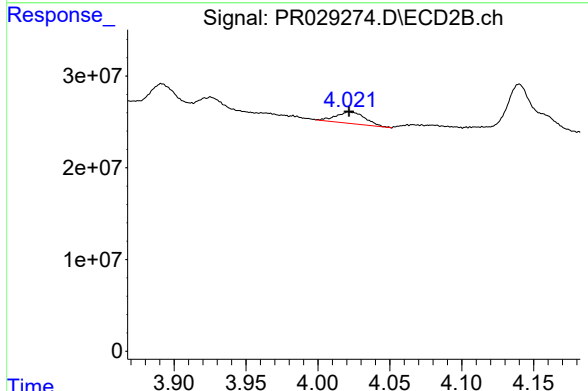
#8 AR-1221-1

R.T.: 3.925 min
 Delta R.T.: -0.011 min
 Response: 18186344
 Conc: 30.82 ng/ml

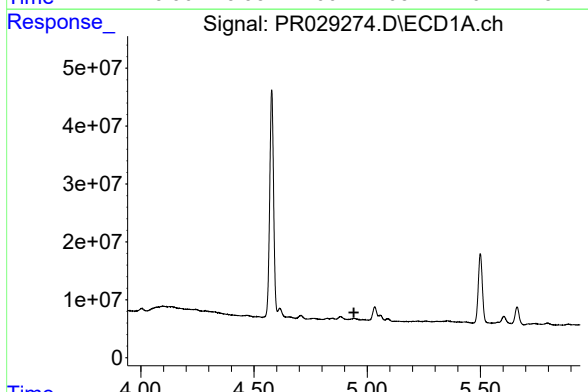


#9 AR-1221-2
 R.T.: 0.000 min
 Exp R.T. : 4.864 min
 Response: 0
 Conc: N.D.

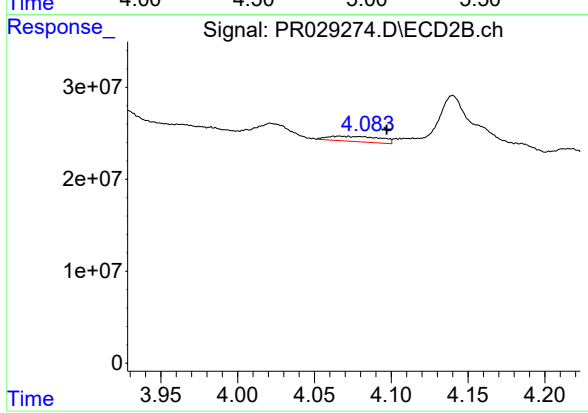
Instrument :
 ECD_R
 ClientSampleId :



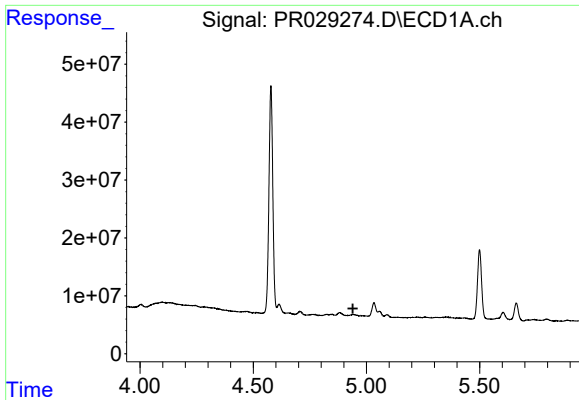
#9 AR-1221-2
 R.T.: 4.022 min
 Delta R.T.: 0.000 min
 Response: 18023172
 Conc: 40.12 ng/ml



#10 AR-1221-3
 R.T.: 0.000 min
 Exp R.T. : 4.941 min
 Response: 0
 Conc: N.D.



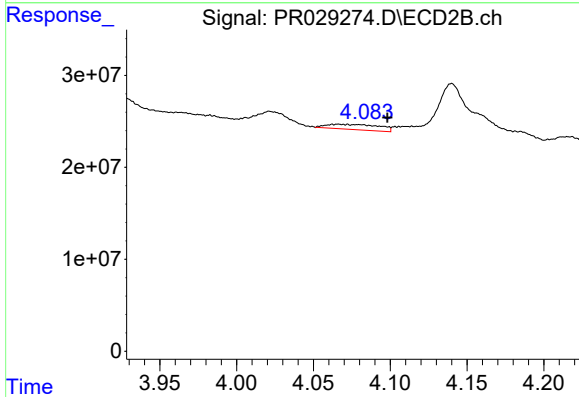
#10 AR-1221-3
 R.T.: 4.067 min
 Delta R.T.: -0.030 min
 Response: 13309635
 Conc: 9.53 ng/ml



#11 AR-1232-1

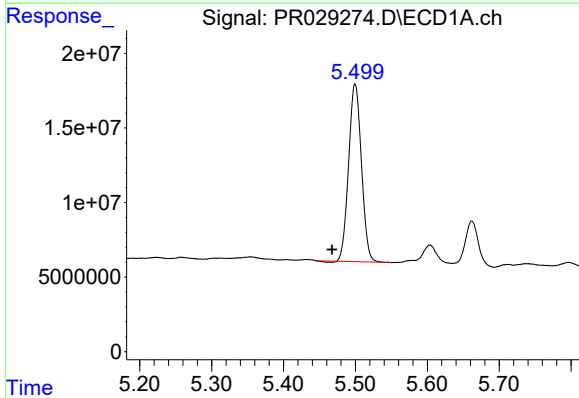
R.T.: 0.000 min
 Exp R.T.: 4.940 min
 Response: 0
 Conc: N.D.

Instrument :
 ECD_R
 ClientSampleId :



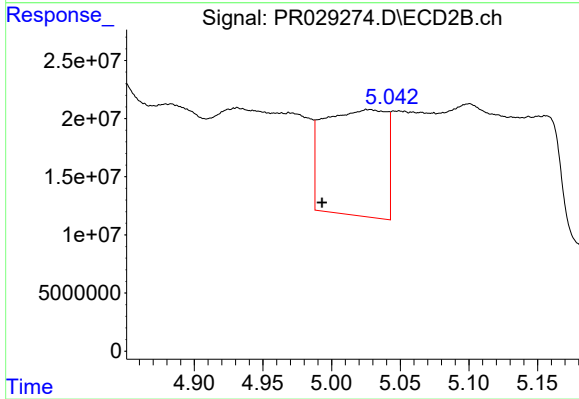
#11 AR-1232-1

R.T.: 4.067 min
 Delta R.T.: -0.032 min
 Response: 13309635
 Conc: 14.13 ng/ml



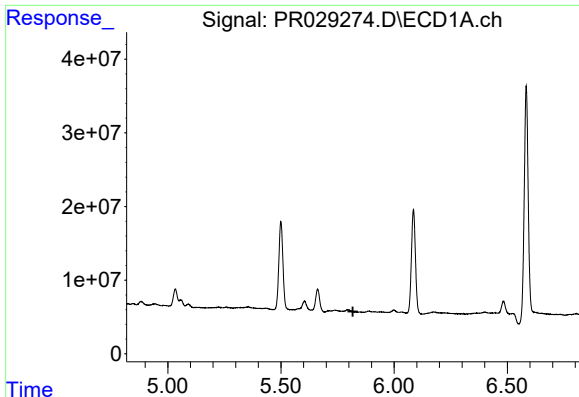
#12 AR-1232-2

R.T.: 5.500 min
 Delta R.T.: 0.032 min
 Response: 147006102
 Conc: 521.52 ng/ml



#12 AR-1232-2

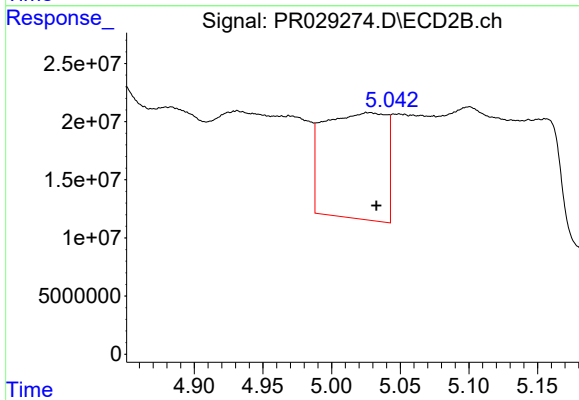
R.T.: 5.027 min
 Delta R.T.: 0.034 min
 Response: 286904861
 Conc: 433.71 ng/ml



#13 AR-1232-3

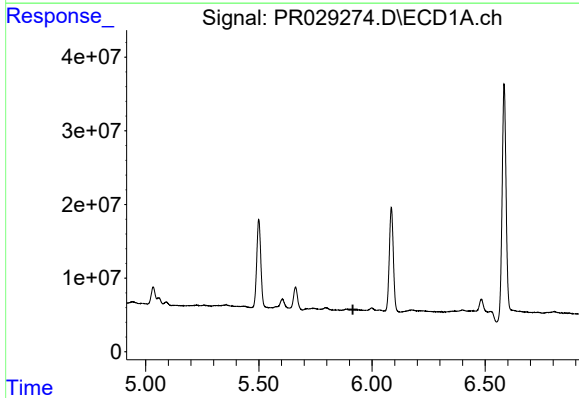
R.T.: 0.000 min
 Exp R.T.: 5.818 min
 Response: 0
 Conc: N.D.

Instrument :
 ECD_R
 ClientSampled :



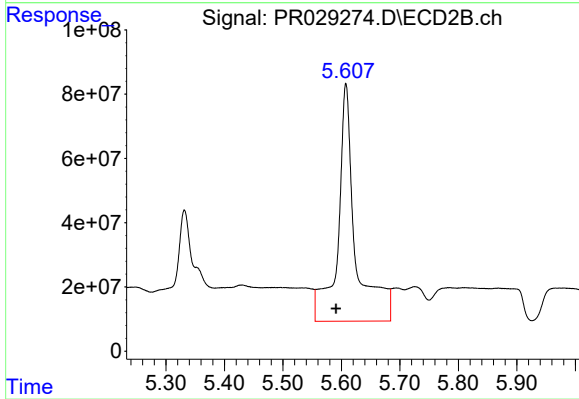
#13 AR-1232-3

R.T.: 5.027 min
 Delta R.T.: -0.005 min
 Response: 286904861
 Conc: 576.76 ng/ml



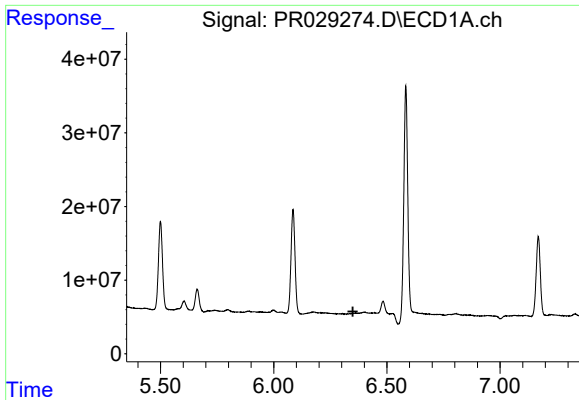
#14 AR-1232-4

R.T.: 0.000 min
 Exp R.T.: 5.915 min
 Response: 0
 Conc: N.D.



#14 AR-1232-4

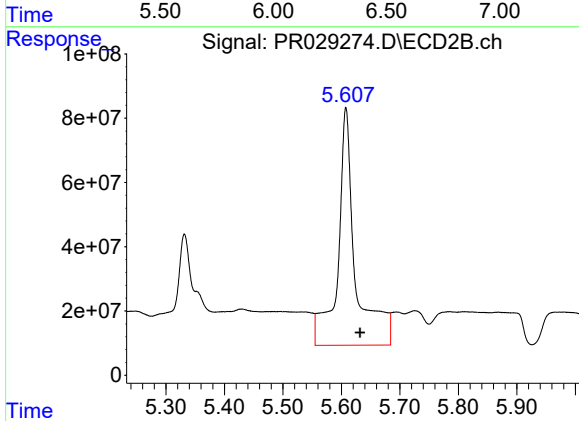
R.T.: 5.608 min
 Delta R.T.: 0.017 min
 Response: 1539750104
 Conc: 1980.58 ng/ml



#15 AR-1232-5

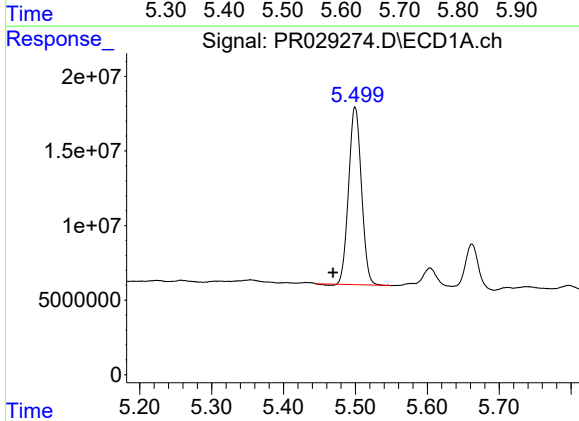
R.T.: 0.000 min
 Exp R.T.: 6.350 min
 Response: 0
 Conc: N.D.

Instrument :
 ECD_R
 ClientSampled :



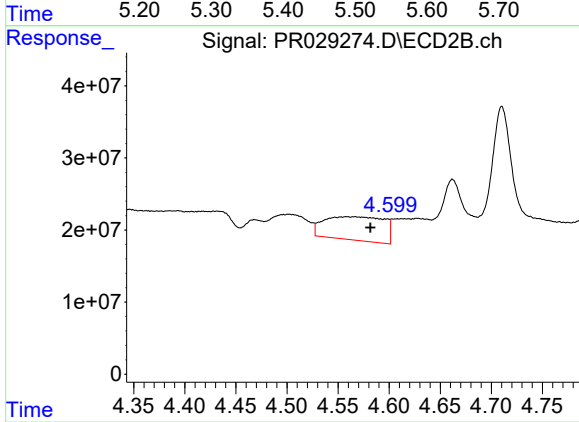
#15 AR-1232-5

R.T.: 5.608 min
 Delta R.T.: -0.024 min
 Response: 1539750104
 Conc: 2509.55 ng/ml



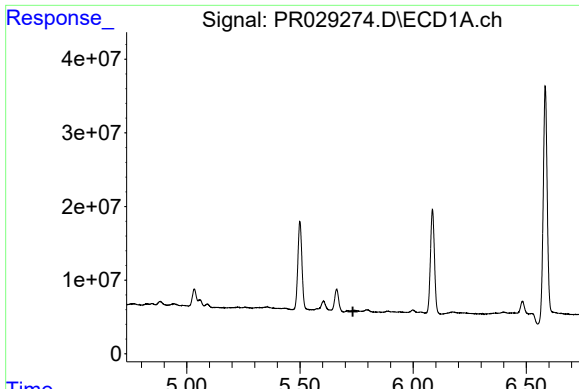
#16 AR-1242-1

R.T.: 5.500 min
 Delta R.T.: 0.031 min
 Response: 147006102
 Conc: 325.08 ng/ml



#16 AR-1242-1

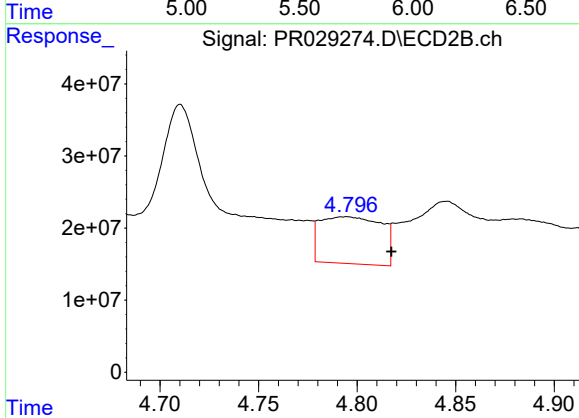
R.T.: 4.566 min
 Delta R.T.: -0.016 min
 Response: 132937986
 Conc: 134.56 ng/ml



#17 AR-1242-2

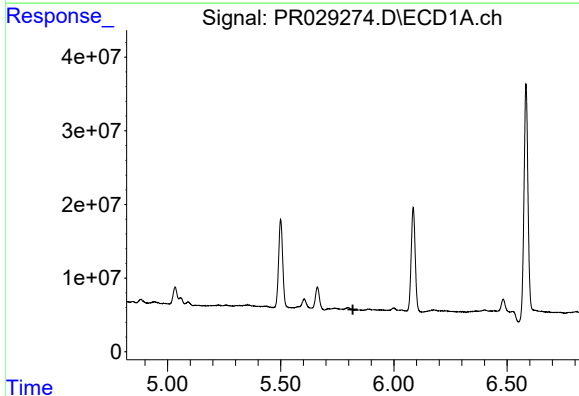
R.T.: 0.000 min
 Exp R.T. : 5.734 min
 Response: 0
 Conc: N.D.

Instrument :
 ECD_R
 ClientSampled :



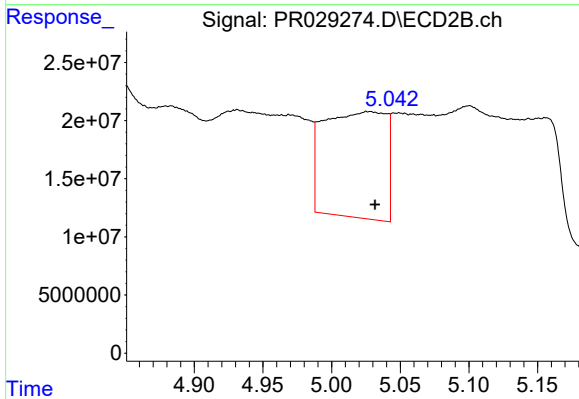
#17 AR-1242-2

R.T.: 4.795 min
 Delta R.T.: -0.023 min
 Response: 140759088
 Conc: 70.22 ng/ml



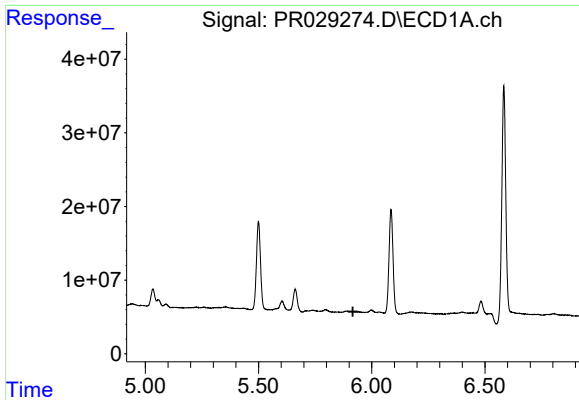
#18 AR-1242-3

R.T.: 0.000 min
 Exp R.T. : 5.819 min
 Response: 0
 Conc: N.D.



#18 AR-1242-3

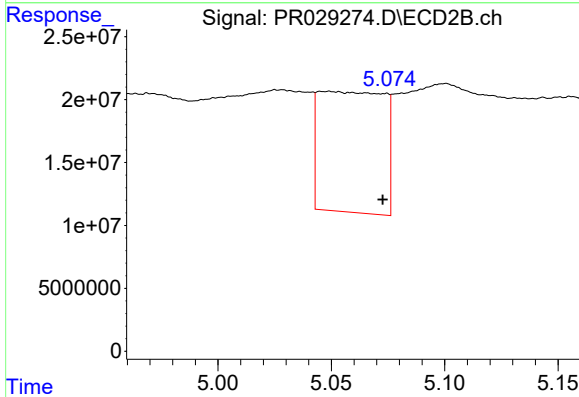
R.T.: 5.027 min
 Delta R.T.: -0.004 min
 Response: 286904861
 Conc: 344.57 ng/ml



#19 AR-1242-4

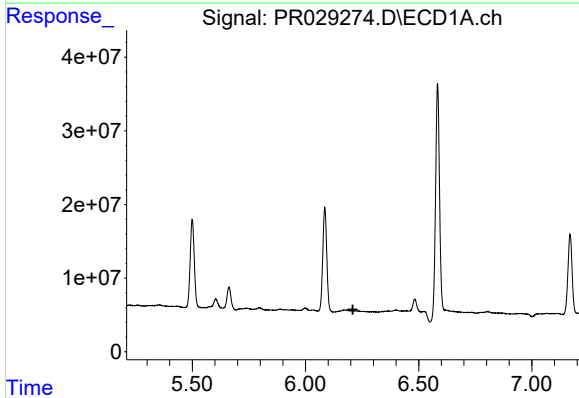
R.T.: 0.000 min
 Exp R.T. : 5.917 min
 Response: 0
 Conc: N.D.

Instrument :
 ECD_R
 ClientSampleId :



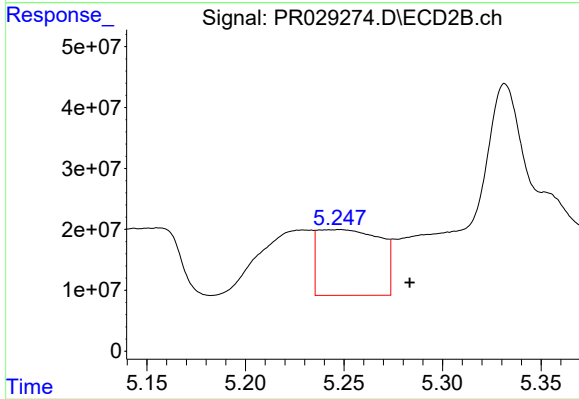
#19 AR-1242-4

R.T.: 5.049 min
 Delta R.T.: -0.024 min
 Response: 190259275
 Conc: 181.63 ng/ml



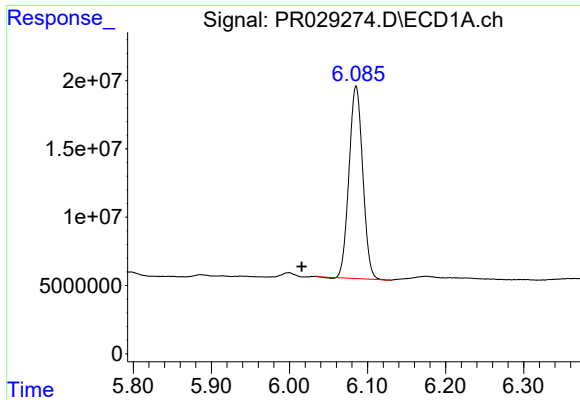
#20 AR-1242-5

R.T.: 0.000 min
 Exp R.T. : 6.209 min
 Response: 0
 Conc: N.D.



#20 AR-1242-5

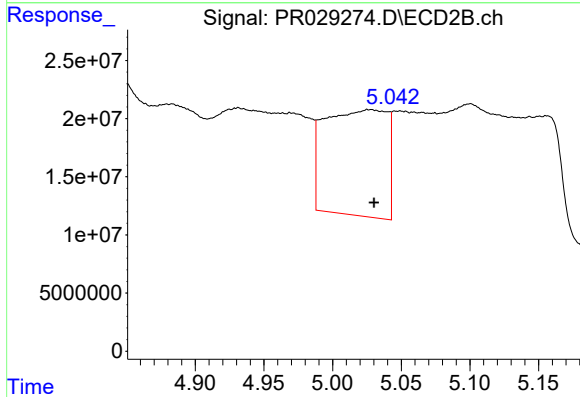
R.T.: 5.248 min
 Delta R.T.: -0.035 min
 Response: 236626455
 Conc: 502.99 ng/ml



#21 AR-1248-1

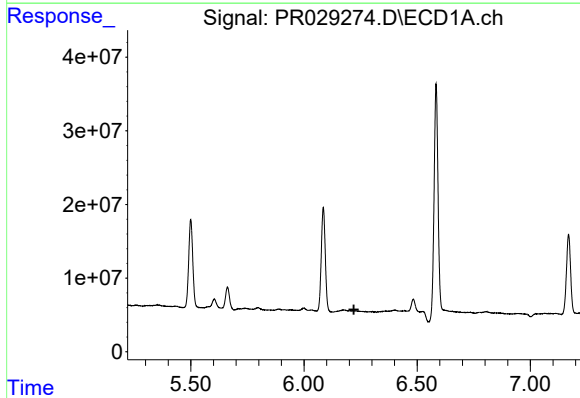
R.T.: 6.085 min
 Delta R.T.: 0.069 min
 Response: 172071029
 Conc: 213.86 ng/ml

Instrument :
 ECD_R
 ClientSampleId :



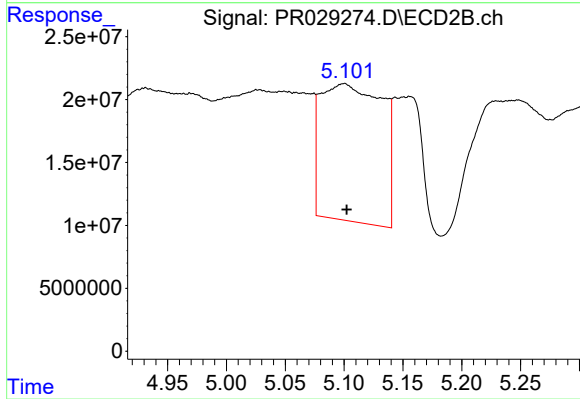
#21 AR-1248-1

R.T.: 5.027 min
 Delta R.T.: -0.003 min
 Response: 286904861
 Conc: 181.62 ng/ml



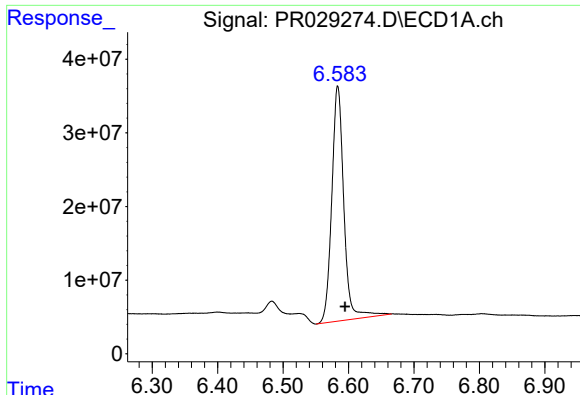
#22 AR-1248-2

R.T.: 0.000 min
 Exp R.T. : 6.221 min
 Response: 0
 Conc: N.D.



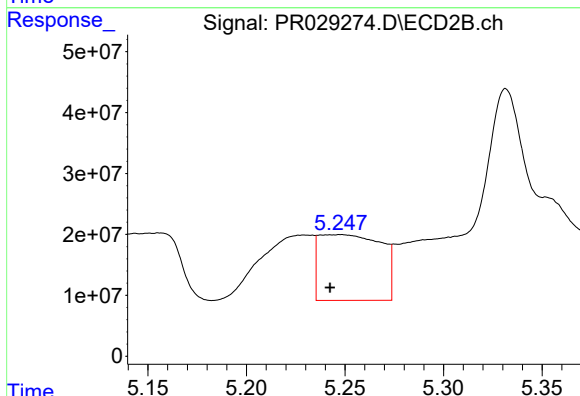
#22 AR-1248-2

R.T.: 5.100 min
 Delta R.T.: -0.002 min
 Response: 395951227
 Conc: 643.29 ng/ml

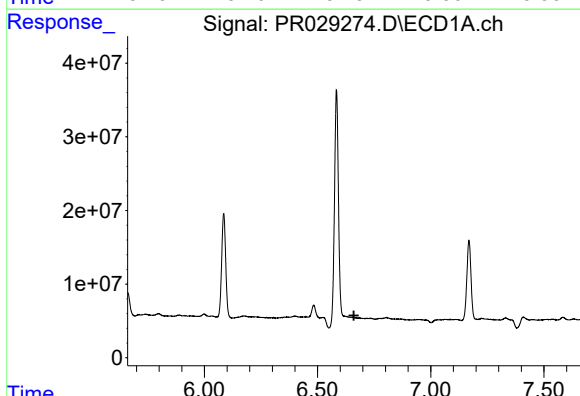


#23 AR-1248-3
 R.T.: 6.584 min
 Delta R.T.: -0.011 min
 Response: 407999690
 Conc: 513.21 ng/ml

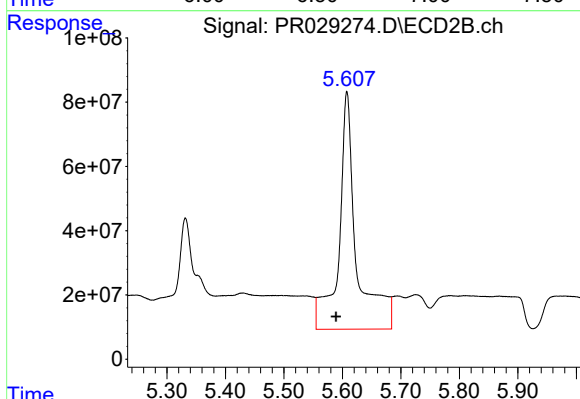
Instrument :
 ECD_R
 ClientSampled :



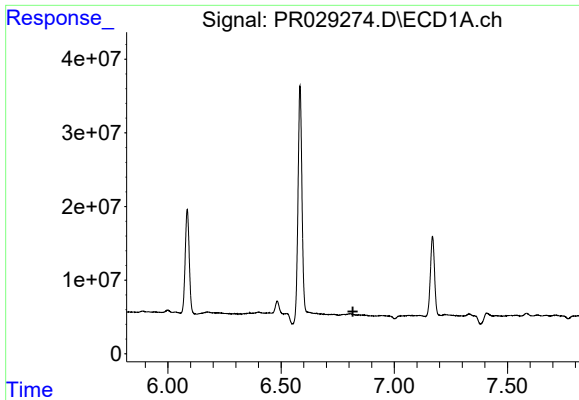
#23 AR-1248-3
 R.T.: 5.248 min
 Delta R.T.: 0.005 min
 Response: 236626455
 Conc: 116.89 ng/ml



#24 AR-1248-4
 R.T.: 0.000 min
 Exp R.T. : 6.661 min
 Response: 0
 Conc: N.D.



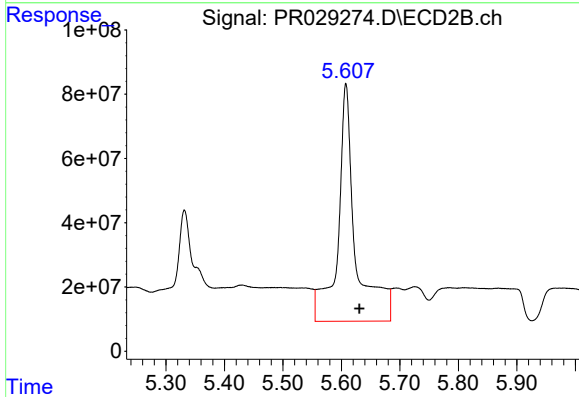
#24 AR-1248-4
 R.T.: 5.608 min
 Delta R.T.: 0.019 min
 Response: 1539750104
 Conc: 506.81 ng/ml



#25 AR-1248-5

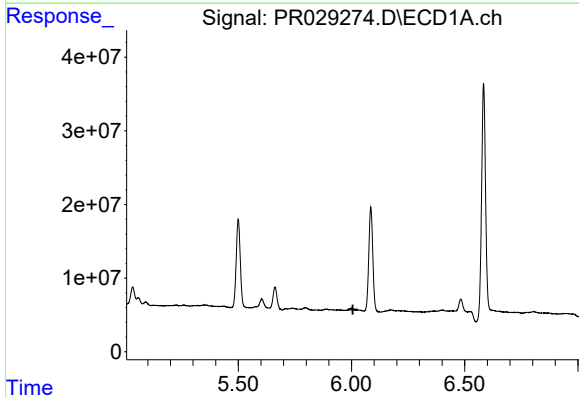
R.T.: 0.000 min
 Exp R.T.: 6.817 min
 Response: 0
 Conc: N.D.

Instrument :
 ECD_R
 ClientSampled :



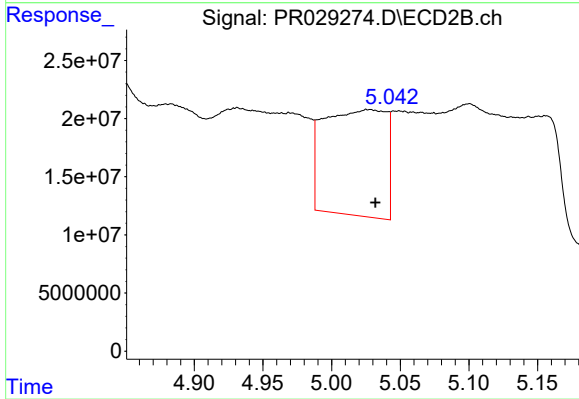
#25 AR-1248-5

R.T.: 5.608 min
 Delta R.T.: -0.023 min
 Response: 1539750104
 Conc: 720.52 ng/ml



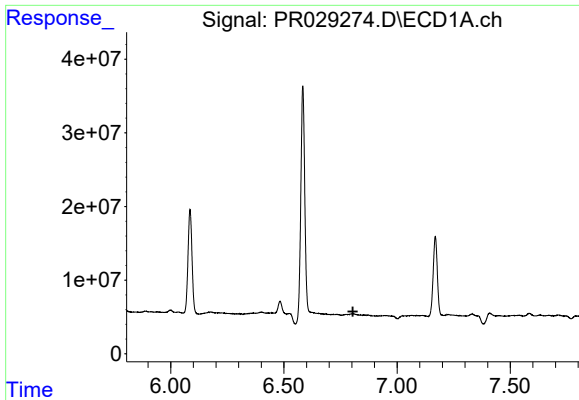
#26 AR-1254-1

R.T.: 0.000 min
 Exp R.T.: 6.006 min
 Response: 0
 Conc: N.D.



#26 AR-1254-1

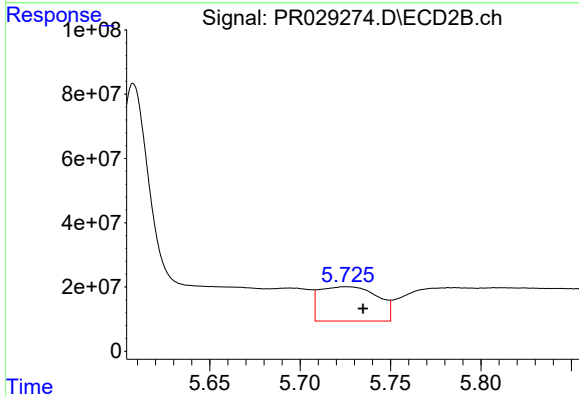
R.T.: 5.027 min
 Delta R.T.: -0.005 min
 Response: 286904861
 Conc: 233.80 ng/ml



#27 AR-1254-2

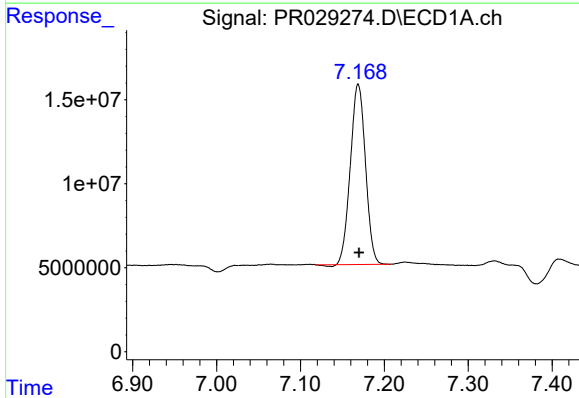
R.T.: 0.000 min
 Exp R.T.: 6.805 min
 Response: 0
 Conc: N.D.

Instrument :
 ECD_R
 ClientSampleId :



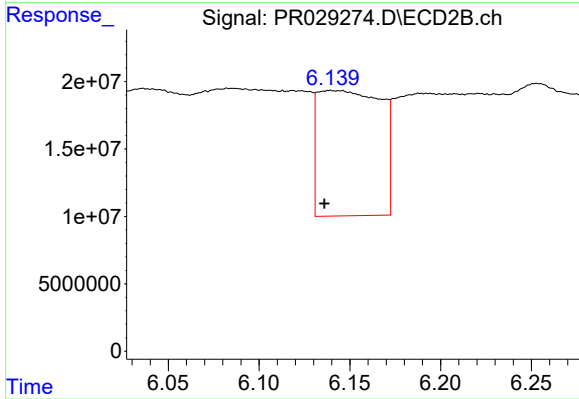
#27 AR-1254-2

R.T.: 5.726 min
 Delta R.T.: -0.009 min
 Response: 237023307
 Conc: 81.69 ng/ml



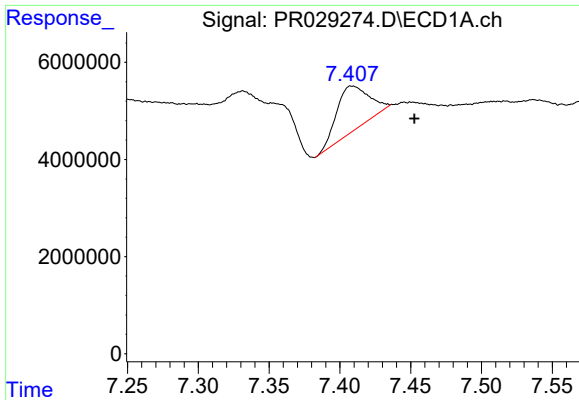
#28 AR-1254-3

R.T.: 7.169 min
 Delta R.T.: -0.001 min
 Response: 134322507
 Conc: 75.53 ng/ml



#28 AR-1254-3

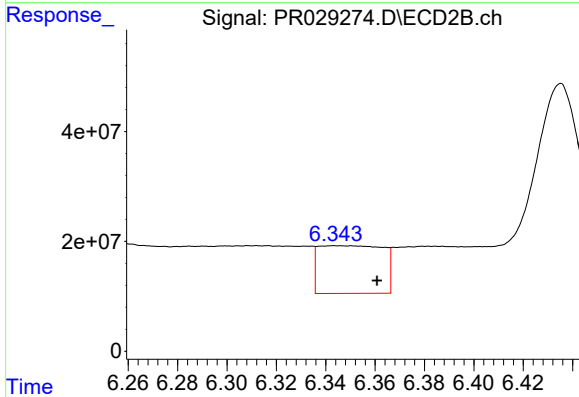
R.T.: 6.141 min
 Delta R.T.: 0.005 min
 Response: 224938347
 Conc: 46.40 ng/ml



#29 AR-1254-4

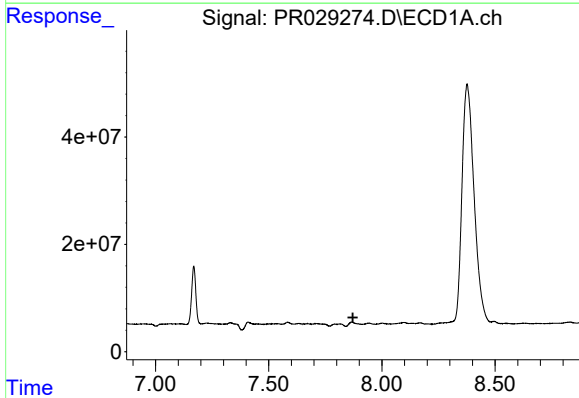
R.T.: 7.409 min
 Delta R.T.: -0.044 min
 Response: 14554198
 Conc: 10.61 ng/ml

Instrument :
 ECD_R
 ClientSampled :



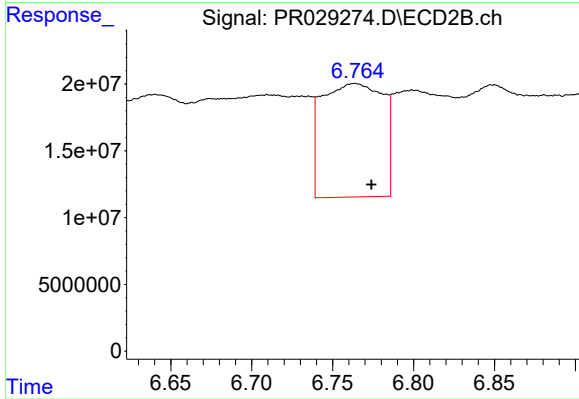
#29 AR-1254-4

R.T.: 6.345 min
 Delta R.T.: -0.015 min
 Response: 157180852
 Conc: 42.07 ng/ml



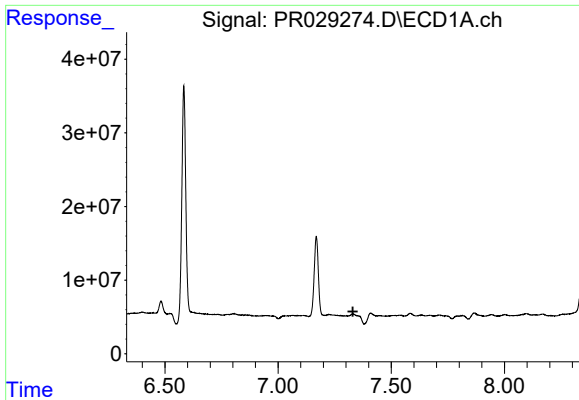
#30 AR-1254-5

R.T.: 0.000 min
 Exp R.T. : 7.872 min
 Response: 0
 Conc: N.D.



#30 AR-1254-5

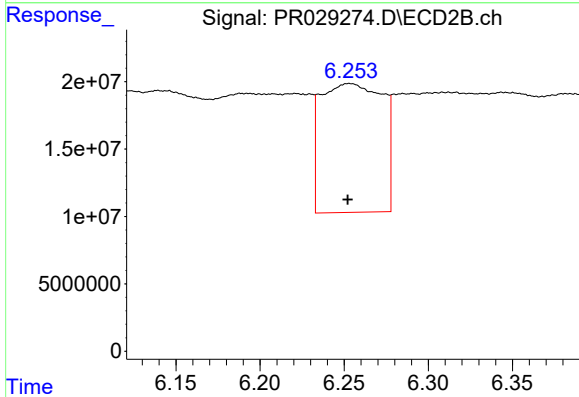
R.T.: 6.764 min
 Delta R.T.: -0.010 min
 Response: 223700470
 Conc: 58.69 ng/ml



#31 AR-1260-1

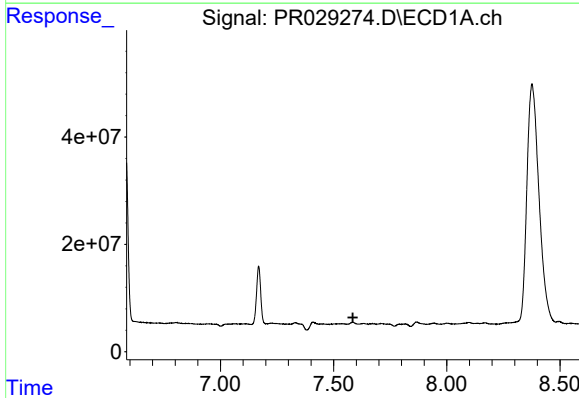
R.T.: 0.000 min
 Exp R.T. : 7.330 min
 Response: 0
 Conc: N.D.

Instrument :
 ECD_R
 ClientSampleId :



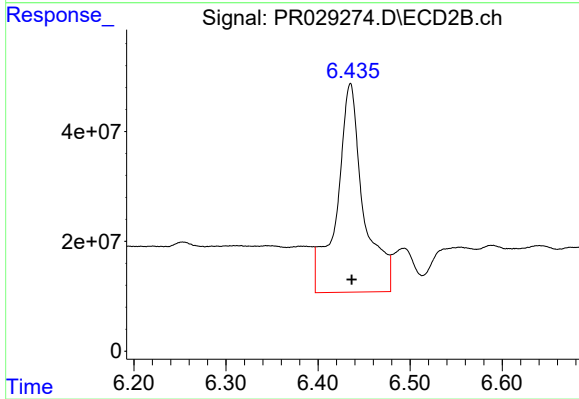
#31 AR-1260-1

R.T.: 6.253 min
 Delta R.T.: 0.001 min
 Response: 244493532
 Conc: 72.61 ng/ml



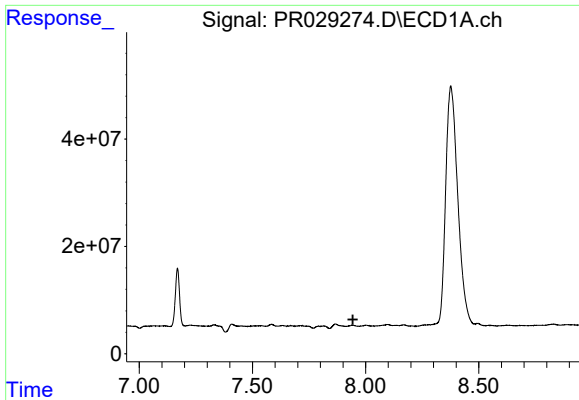
#32 AR-1260-2

R.T.: 0.000 min
 Exp R.T. : 7.585 min
 Response: 0
 Conc: N.D.



#32 AR-1260-2

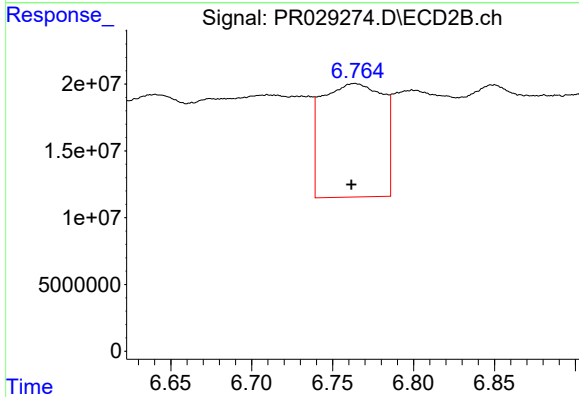
R.T.: 6.435 min
 Delta R.T.: -0.001 min
 Response: 763608078
 Conc: 183.44 ng/ml



#33 AR-1260-3

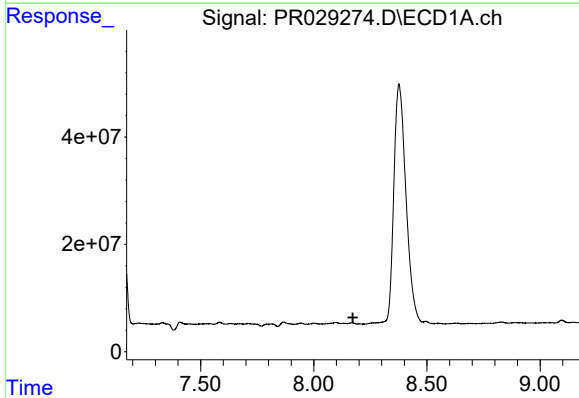
R.T.: 0.000 min
 Exp R.T. : 7.944 min
 Response: 0
 Conc: N.D.

Instrument :
 ECD_R
 ClientSampled :



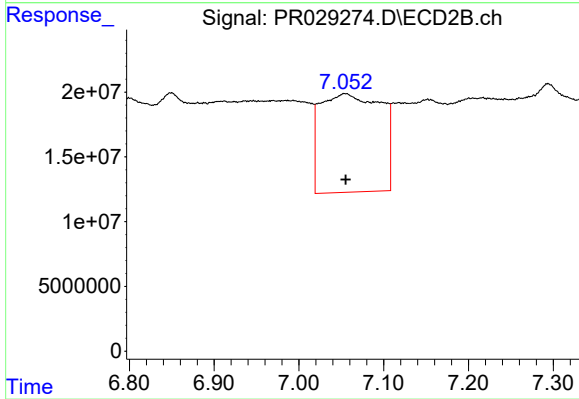
#33 AR-1260-3

R.T.: 6.764 min
 Delta R.T.: 0.002 min
 Response: 223700470
 Conc: 59.22 ng/ml



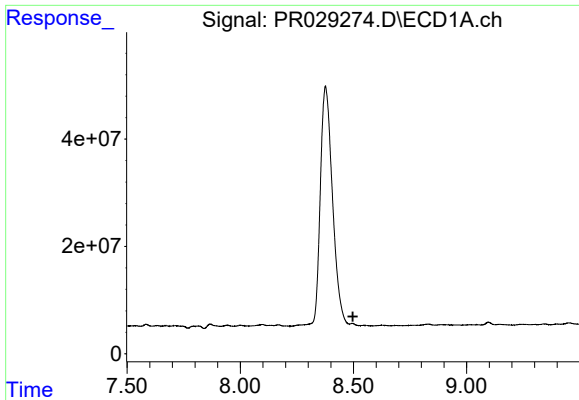
#34 AR-1260-4

R.T.: 0.000 min
 Exp R.T. : 8.173 min
 Response: 0
 Conc: N.D.



#34 AR-1260-4

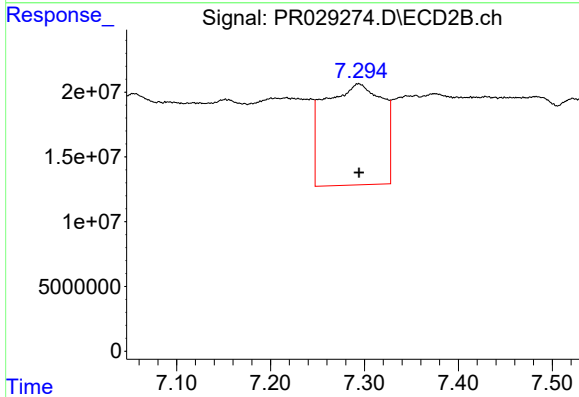
R.T.: 7.055 min
 Delta R.T.: 0.000 min
 Response: 379264442
 Conc: 177.80 ng/ml



#35 AR-1260-5

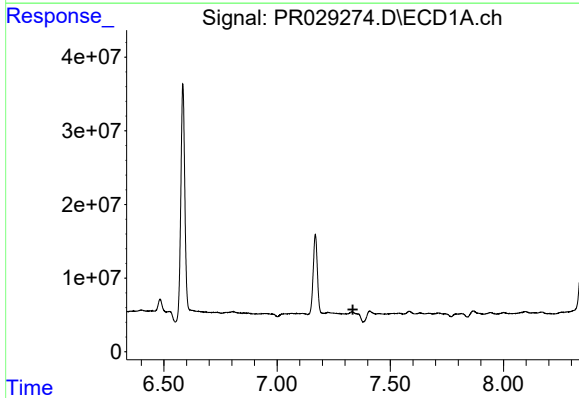
R.T.: 0.000 min
 Exp R.T. : 8.498 min
 Response: 0
 Conc: N.D.

Instrument :
 ECD_R
 ClientSampleId :



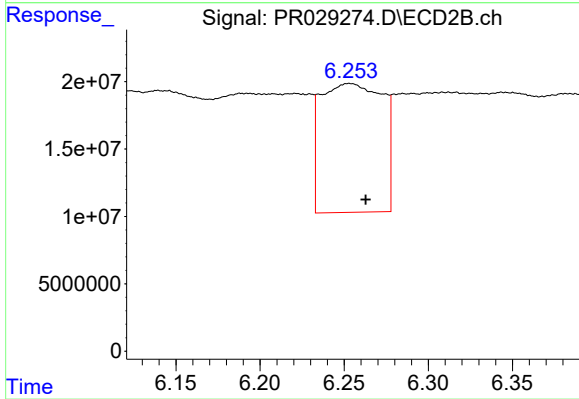
#35 AR-1260-5

R.T.: 7.294 min
 Delta R.T.: 0.000 min
 Response: 337406721
 Conc: 76.24 ng/ml



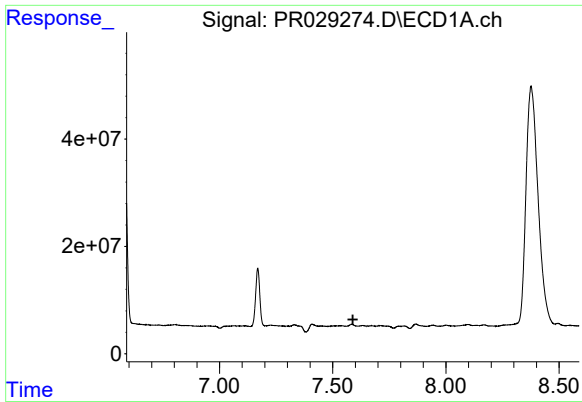
#36 AR-1262-1

R.T.: 0.000 min
 Exp R.T. : 7.335 min
 Response: 0
 Conc: N.D.



#36 AR-1262-1

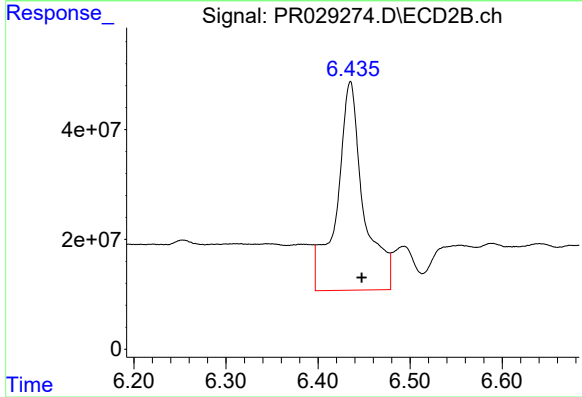
R.T.: 6.253 min
 Delta R.T.: -0.010 min
 Response: 244493532
 Conc: 86.16 ng/ml



#37 AR-1262-2

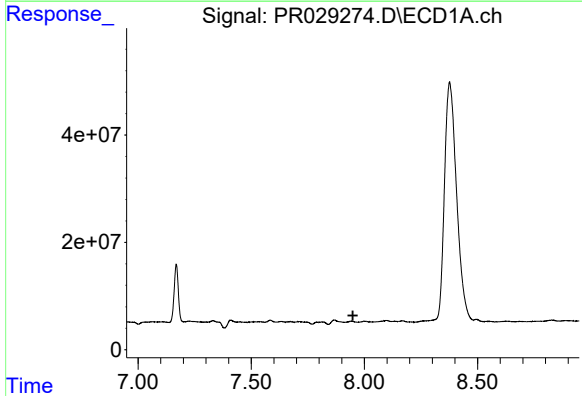
R.T.: 0.000 min
 Exp R.T. : 7.589 min
 Response: 0
 Conc: N.D.

Instrument :
 ECD_R
 ClientSampleId :



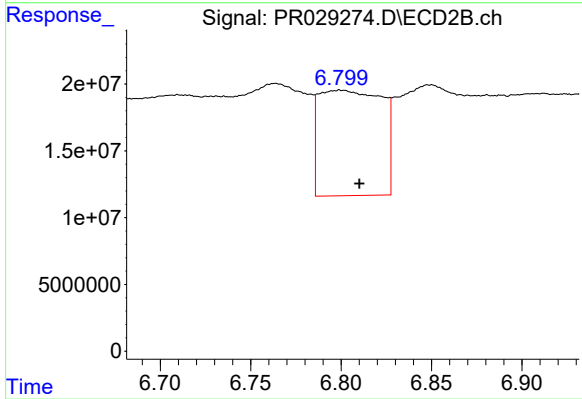
#37 AR-1262-2

R.T.: 6.435 min
 Delta R.T.: -0.012 min
 Response: 763608078
 Conc: 218.16 ng/ml



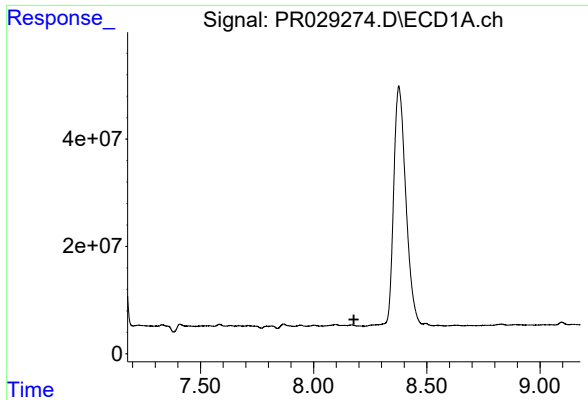
#38 AR-1262-3

R.T.: 0.000 min
 Exp R.T. : 7.949 min
 Response: 0
 Conc: N.D.



#38 AR-1262-3

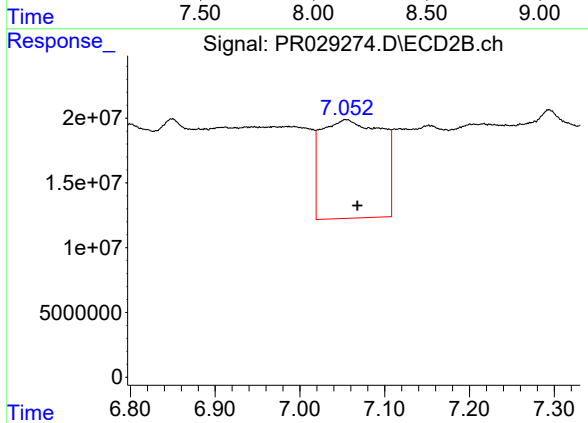
R.T.: 6.799 min
 Delta R.T.: -0.011 min
 Response: 191468642
 Conc: 40.02 ng/ml



#39 AR-1262-4

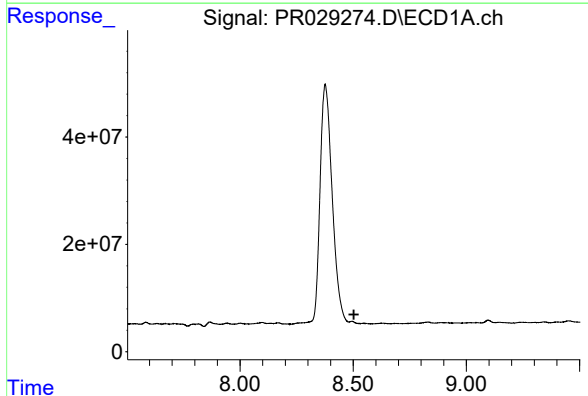
R.T.: 0.000 min
 Exp R.T. : 8.178 min
 Response: 0
 Conc: N.D.

Instrument :
 ECD_R
 ClientSampleId :



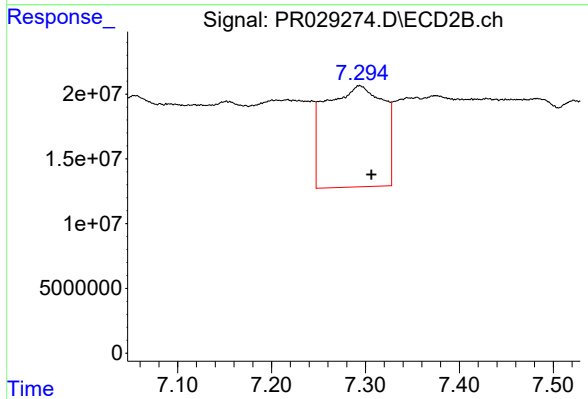
#39 AR-1262-4

R.T.: 7.055 min
 Delta R.T.: -0.013 min
 Response: 379264442
 Conc: 116.88 ng/ml



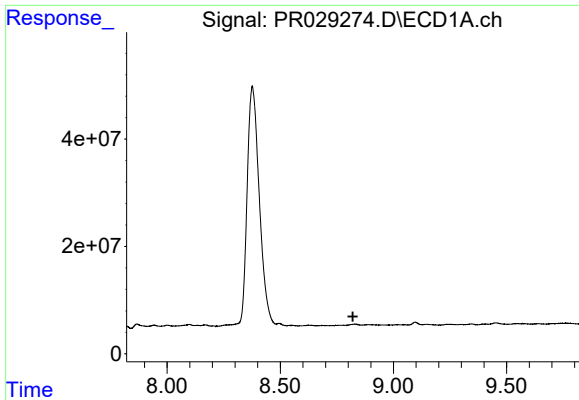
#40 AR-1262-5

R.T.: 0.000 min
 Exp R.T. : 8.503 min
 Response: 0
 Conc: N.D.



#40 AR-1262-5

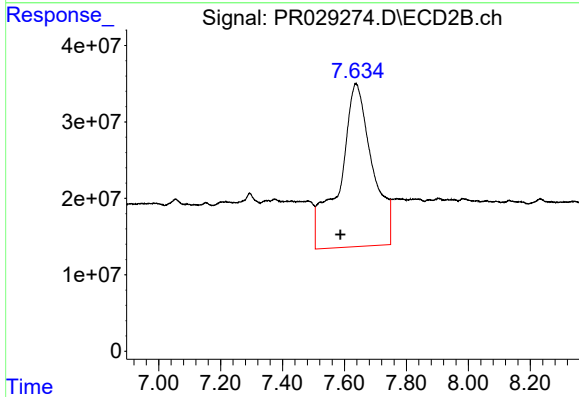
R.T.: 7.294 min
 Delta R.T.: -0.012 min
 Response: 337406721
 Conc: 59.73 ng/ml



#41 AR-1268-1

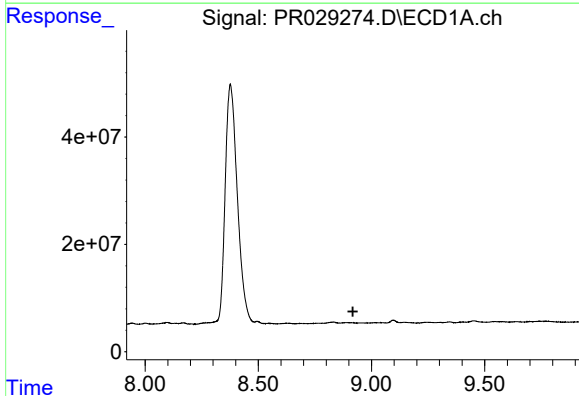
R.T.: 0.000 min
 Exp R.T. : 8.821 min
 Response: 0
 Conc: N.D.

Instrument :
 ECD_R
 ClientSampled :



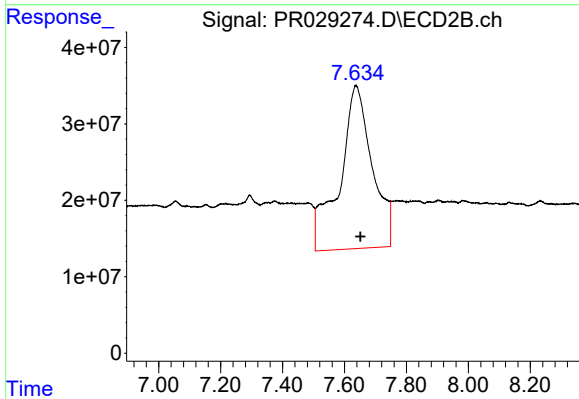
#41 AR-1268-1

R.T.: 7.637 min
 Delta R.T.: 0.050 min
 Response: 1556068670
 Conc: 360.40 ng/ml



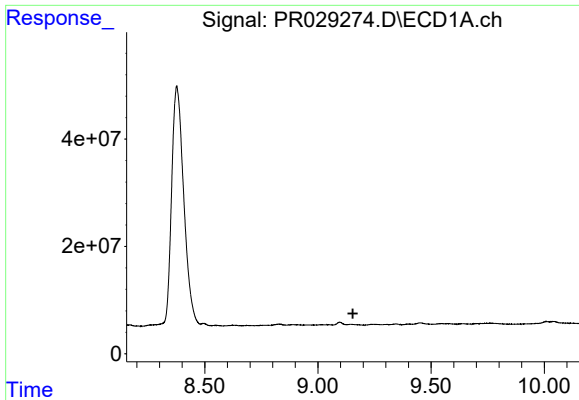
#42 AR-1268-2

R.T.: 0.000 min
 Exp R.T. : 8.918 min
 Response: 0
 Conc: N.D.



#42 AR-1268-2

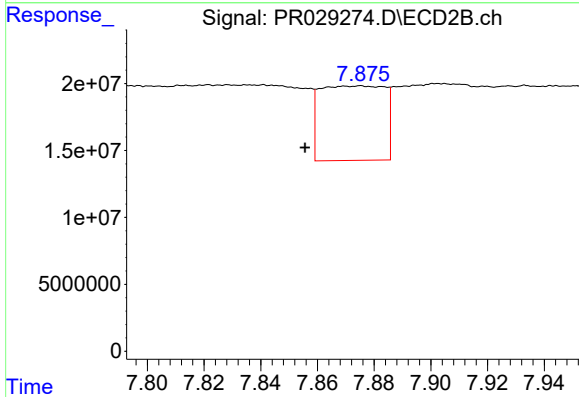
R.T.: 7.637 min
 Delta R.T.: -0.014 min
 Response: 1556068670
 Conc: 414.79 ng/ml



#43 AR-1268-3

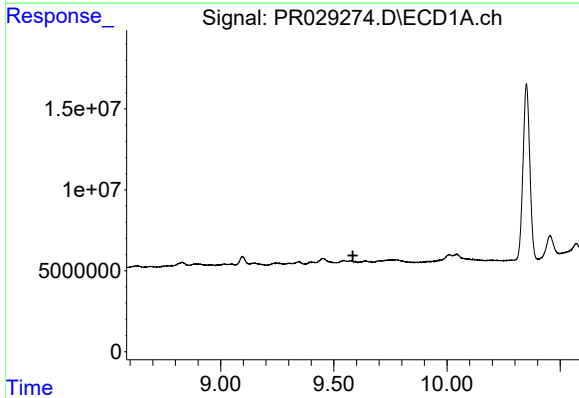
R.T.: 0.000 min
 Exp R.T. : 9.154 min
 Response: 0
 Conc: N.D.

Instrument :
 ECD_R
 ClientSampleId :



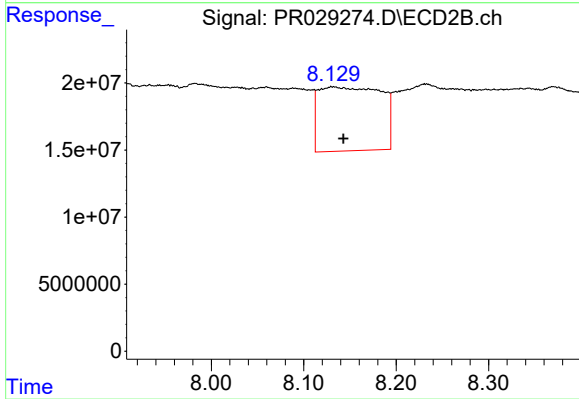
#43 AR-1268-3

R.T.: 7.874 min
 Delta R.T.: 0.019 min
 Response: 87833725
 Conc: 30.55 ng/ml



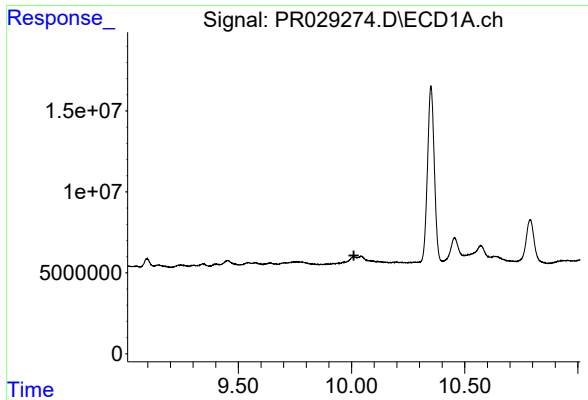
#44 AR-1268-4

R.T.: 0.000 min
 Exp R.T. : 9.584 min
 Response: 0
 Conc: N.D.



#44 AR-1268-4

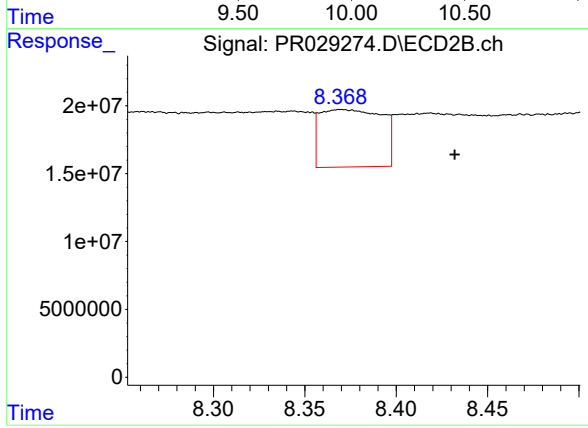
R.T.: 8.132 min
 Delta R.T.: -0.011 min
 Response: 224508721
 Conc: 187.22 ng/ml



#45 AR-1268-5

R.T.: 0.000 min
 Exp R.T.: 10.010 min
 Response: 0
 Conc: N.D.

Instrument :
 ECD_R
 ClientSampleId :



#45 AR-1268-5

R.T.: 8.370 min
 Delta R.T.: -0.062 min
 Response: 100208895
 Conc: 13.39 ng/ml