

Data Path : Z:\pestpcbsrv\HPCHEM1\ECD_R\Data\PR062722\
 Data File : PR054991.D
 Signal(s) : Signal #1: ECD1A.ch Signal #2: ECD2B.ch
 Acq On : 27 Jun 2022 16:49
 Operator : AJ\MA
 Sample : PR062722ICV500
 Misc :
 ALS Vial : 27 Sample Multiplier: 1

Instrument :
 ECD_R
 ClientSampleId :

Integration File signal 1: autoint1.e
 Integration File signal 2: autoint2.e
 Quant Time: Jun 27 17:06:09 2022
 Quant Method : Z:\pestpcbsrv\HPCHEM1\ECD_R\Method\PR062722.M
 Quant Title : GC EXTRACTABLES
 QLast Update : Mon Jun 27 17:05:06 2022
 Response via : Initial Calibration
 Integrator: ChemStation

Volume Inj. : 2 µl
 Signal #1 Phase : ZB-MR1 Signal #2 Phase: ZB-MR2
 Signal #1 Info : 30Mx0.32mmx 0.50µ Signal #2 Info : 30M x 0.32mm x 0.25µm

Compound	RT#1	RT#2	Resp#1	Resp#2	ng/ml	ng/ml
System Monitoring Compounds						
1) SA Tetrachlo...	3.641	2.912	186.8E6	85159978	51.355	51.012
2) SA Decachlor...	9.534	8.140	71825098	69787435	49.812	49.670
Target Compounds						
3) L1 AR-1016-1	4.863	4.024	52482397	28601798	513.074	498.845
4) L1 AR-1016-2	4.884	4.042	73721252	39866276	508.361	510.361
5) L1 AR-1016-3	4.949	4.219	44123089	21887500	505.191	514.402
6) L1 AR-1016-4	5.051	4.270	36317804	16957281	500.668	513.128
7) L1 AR-1016-5	5.366	4.485	33079010	21404090	512.883	506.642
8) L2 AR-1221-1	3.859	3.136	6111754	2689435	136.337	130.090
9) L2 AR-1221-2	3.952	3.221	8992787	4009630	274.133	254.440
10) L2 AR-1221-3	4.030	3.299	33264300	15157101	329.124	313.764
11) L3 AR-1232-1	4.030	3.299	33264300	15157101	358.634	343.247
12) L3 AR-1232-2	4.579	4.042	42755301	39866276	980.448	993.406
13) L3 AR-1232-3	4.884	4.219	73721252	21887500	969.315	946.975
14) L3 AR-1232-4	5.051	4.311	36317804	19980610	1017.597	1080.522
15) L3 AR-1232-5	5.155	4.485	28525210	21404090	1054.938	954.465
16) L4 AR-1242-1	4.863	4.024	52482397	28601798	609.247	596.938
17) L4 AR-1242-2	4.884	4.042	73721252	39866276	607.595	612.167
18) L4 AR-1242-3	4.949	4.219	44123089	21887500	605.226	618.937
19) L4 AR-1242-4	5.051	4.311	36317804	19980610	613.384	607.164
20) L4 AR-1242-5	5.840	4.853	4676659	16212323	89.299	375.042 #
21) L5 AR-1248-1	4.863	4.024	52482397	28601798	779.893	800.004
22) L5 AR-1248-2	5.155	4.270	28525210	16957281	346.742	357.595
23) L5 AR-1248-3	5.366	4.311	33079010	19980610	369.649	419.976
24) L5 AR-1248-4	5.799	4.485	5228875	21404090	58.974	363.005 #
25) L5 AR-1248-5	5.840	4.896	4676659	2493542	54.378	43.161
26) L6 AR-1254-1	5.769	4.853	21781909	16212323	233.972	185.340
27) L6 AR-1254-2	6.007	5.012	22826139	15328336	174.721	198.711
28) L6 AR-1254-3	6.398	5.433	12009498	8437692	95.072	68.451 #
29) L6 AR-1254-4	6.709	5.676	7883279	3520089	85.013	44.731 #
30) L6 AR-1254-5	7.163	6.118	58354951	56778979	593.611	496.323
31) L7 AR-1260-1	6.578	5.571	43179482	39420285	495.900	498.776
32) L7 AR-1260-2	6.861	5.775	49253709	47502463	491.667	504.042
33) L7 AR-1260-3	7.251	5.931	33743437	44775303	502.754	501.447
34) L7 AR-1260-4	7.493	6.435	41051010	35086595	510.205	509.737
35) L7 AR-1260-5	7.831	6.700	74763581	84551492	488.096	515.380
36) L8 AR-1262-1	7.251	6.162	33743437	36855328	326.172	344.476
37) L8 AR-1262-2	7.831	6.435	74763581	35086595	415.236	360.497
38) L8 AR-1262-3	8.144	7.003	49779712	17468019	399.271	227.611 #
39) L8 AR-1262-4	8.222	7.069	13009314	62976359	232.484	430.607 #
40) L8 AR-1262-5	8.842	7.606	21176611	20871949	309.704	302.342
41) L9 AR-1268-1	8.144	7.003	49779712	17468019	246.645	80.172 #

Data Path : Z:\pestpcbsrv\HPCHEM1\ECD_R\Data\PR062722\
 Data File : PR054991.D
 Signal(s) : Signal #1: ECD1A.ch Signal #2: ECD2B.ch
 Acq On : 27 Jun 2022 16:49
 Operator : AJ\MA
 Sample : PR062722ICV500
 Misc :
 ALS Vial : 27 Sample Multiplier: 1

Instrument :
 ECD_R
 ClientSampleId :

Integration File signal 1: autoint1.e
 Integration File signal 2: autoint2.e
 Quant Time: Jun 27 17:06:09 2022
 Quant Method : Z:\pestpcbsrv\HPCHEM1\ECD_R\Method\PR062722.M
 Quant Title : GC EXTRACTABLES
 QLast Update : Mon Jun 27 17:05:06 2022
 Response via : Initial Calibration
 Integrator: ChemStation

Volume Inj. : 2 µl
 Signal #1 Phase : ZB-MR1 Signal #2 Phase: ZB-MR2
 Signal #1 Info : 30Mx0.32mmx 0.50µ Signal #2 Info : 30M x 0.32mm x 0.25µm

	Compound	RT#1	RT#2	Resp#1	Resp#2	ng/ml	ng/ml
42)	L9 AR-1268-2	8.222	7.069	13009314	62976359	70.110	314.472 #
43)	L9 AR-1268-3	8.441	7.292	1887409	1500565	12.109	9.010 #
44)	L9 AR-1268-4	8.842	7.606	21176611	20871949	289.016	280.155
45)	L9 AR-1268-5	9.227	7.899	7992617	6502830	15.985	12.233

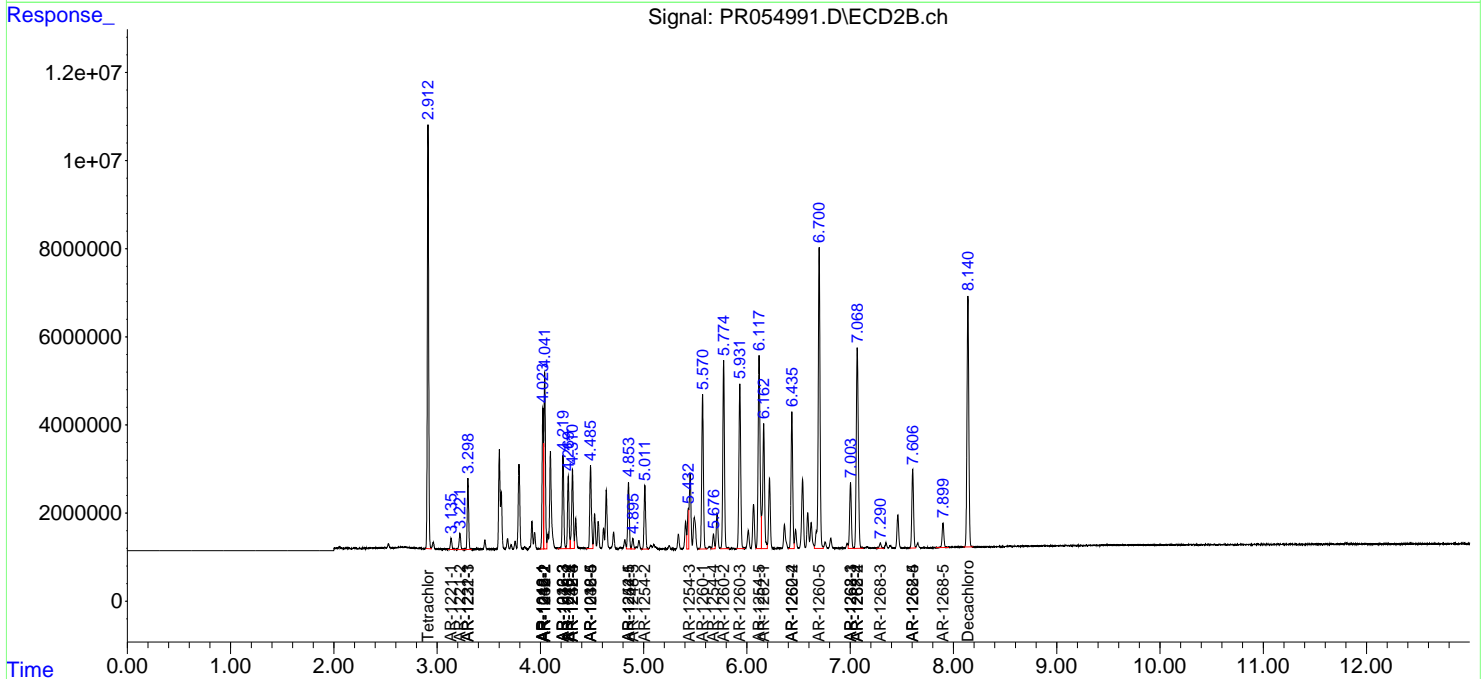
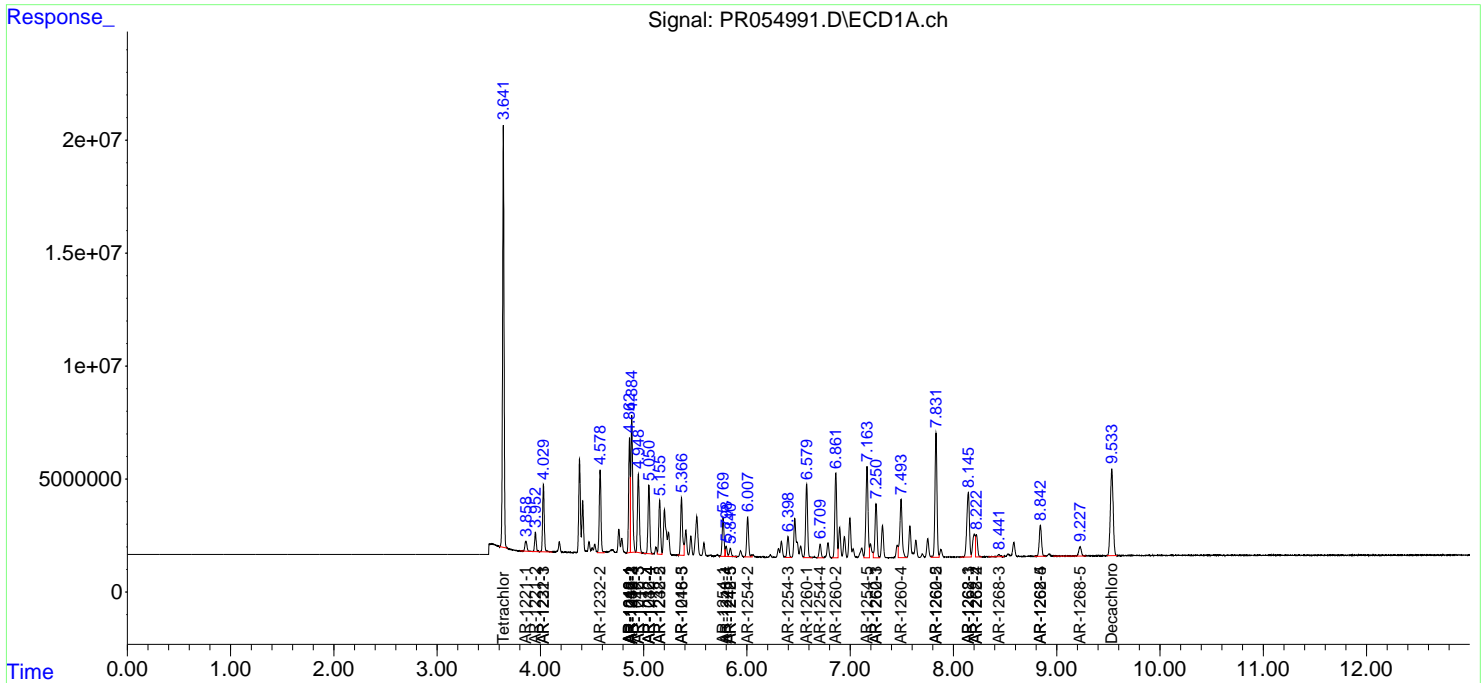
(f)=RT Delta > 1/2 Window (#)=Amounts differ by > 25% (m)=manual int.

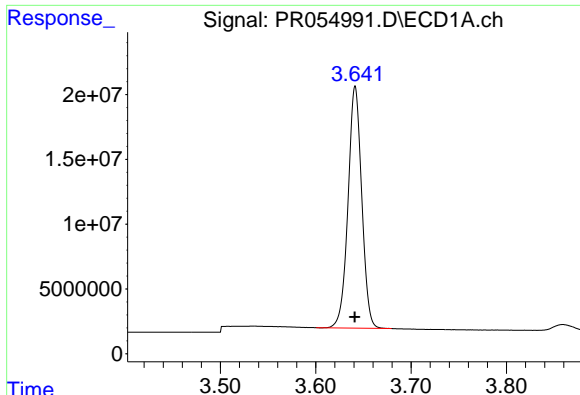
Data Path : Z:\pestpcbsrv\HPCHEM1\ECD_R\Data\PR062722\
 Data File : PR054991.D
 Signal(s) : Signal #1: ECD1A.ch Signal #2: ECD2B.ch
 Acq On : 27 Jun 2022 16:49
 Operator : AJ\MA
 Sample : PR062722ICV500
 Misc :
 ALS Vial : 27 Sample Multiplier: 1

Instrument :
 ECD_R
 ClientSampleId :

Integration File signal 1: autoint1.e
 Integration File signal 2: autoint2.e
 Quant Time: Jun 27 17:06:09 2022
 Quant Method : Z:\pestpcbsrv\HPCHEM1\ECD_R\Method\PR062722.M
 Quant Title : GC EXTRACTABLES
 QLast Update : Mon Jun 27 17:05:06 2022
 Response via : Initial Calibration
 Integrator: ChemStation

Volume Inj. : 2 µl
 Signal #1 Phase : ZB-MR1 Signal #2 Phase: ZB-MR2
 Signal #1 Info : 30Mx0.32mmx 0.50µ Signal #2 Info : 30M x 0.32mm x 0.25µm

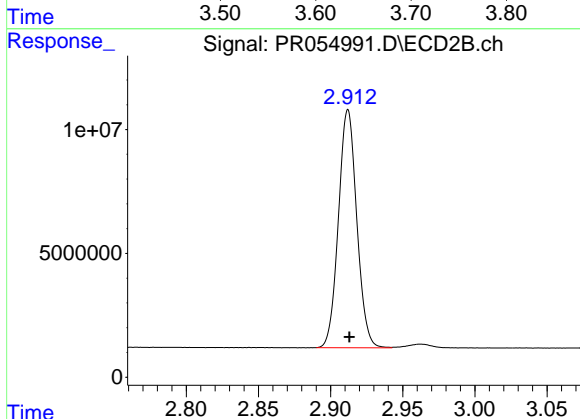




#1 Tetrachloro-m-xylene

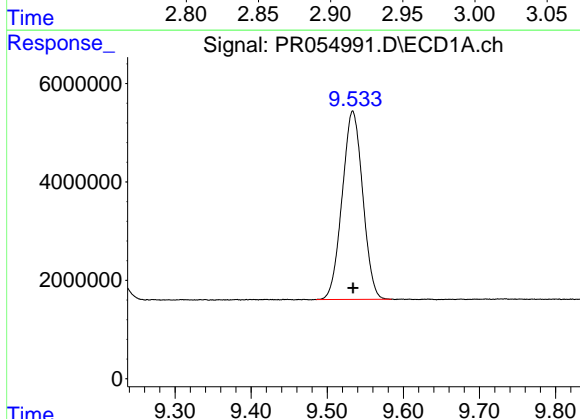
R.T.: 3.641 min
 Delta R.T.: 0.000 min
 Response: 186792814
 Conc: 51.35 ng/ml

Instrument :
 ECD_R
 ClientSampleId :



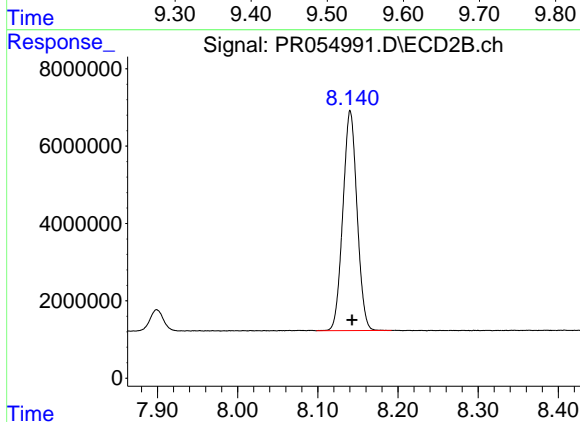
#1 Tetrachloro-m-xylene

R.T.: 2.912 min
 Delta R.T.: -0.001 min
 Response: 85159978
 Conc: 51.01 ng/ml



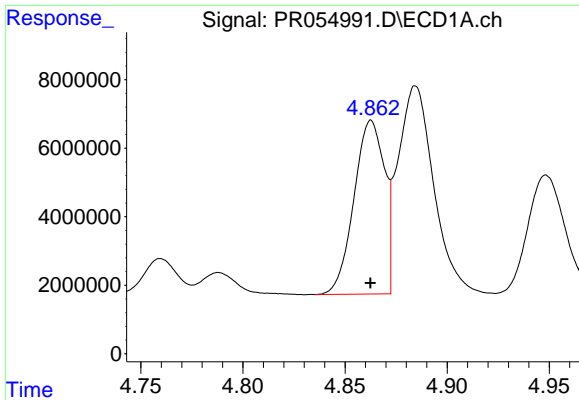
#2 Decachlorobiphenyl

R.T.: 9.534 min
 Delta R.T.: 0.000 min
 Response: 71825098
 Conc: 49.81 ng/ml



#2 Decachlorobiphenyl

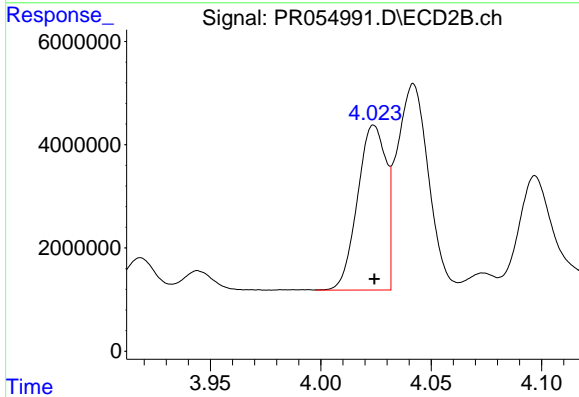
R.T.: 8.140 min
 Delta R.T.: -0.002 min
 Response: 69787435
 Conc: 49.67 ng/ml



#3 AR-1016-1

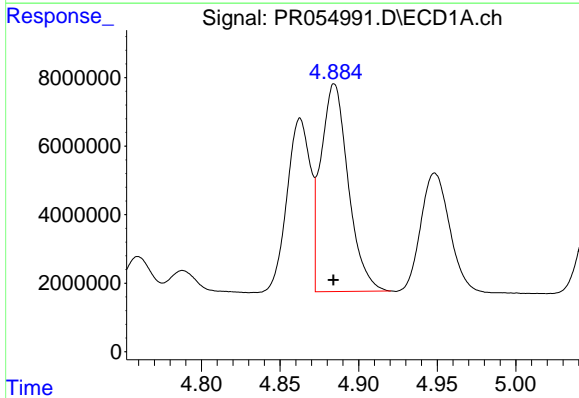
R.T.: 4.863 min
 Delta R.T.: 0.000 min
 Response: 52482397
 Conc: 513.07 ng/ml

Instrument :
 ECD_R
 ClientSampleId :



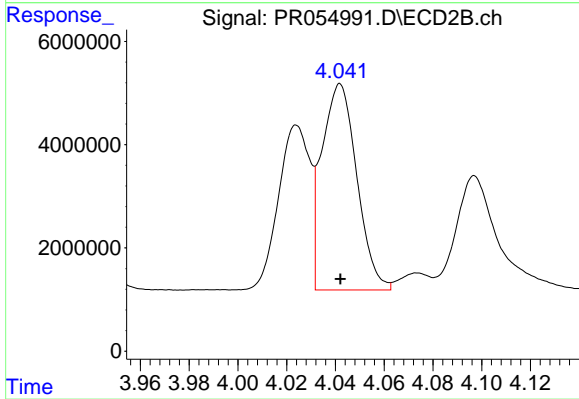
#3 AR-1016-1

R.T.: 4.024 min
 Delta R.T.: 0.000 min
 Response: 28601798
 Conc: 498.85 ng/ml



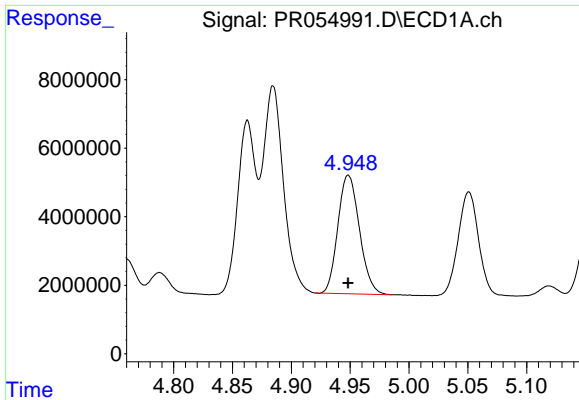
#4 AR-1016-2

R.T.: 4.884 min
 Delta R.T.: 0.000 min
 Response: 73721252
 Conc: 508.36 ng/ml



#4 AR-1016-2

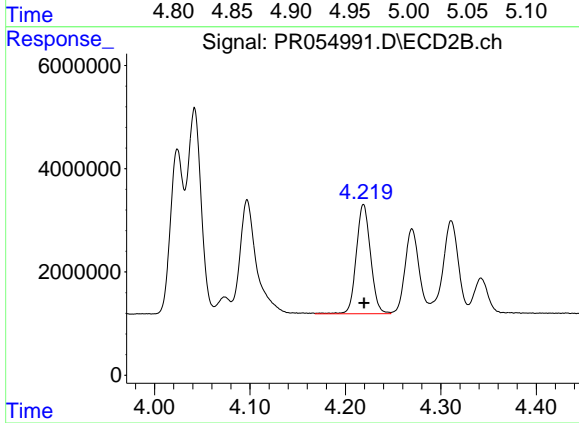
R.T.: 4.042 min
 Delta R.T.: 0.000 min
 Response: 39866276
 Conc: 510.36 ng/ml



#5 AR-1016-3

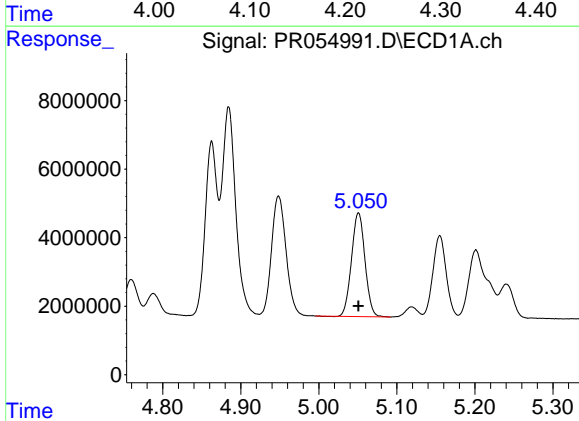
R.T.: 4.949 min
Delta R.T.: 0.000 min
Response: 44123089
Conc: 505.19 ng/ml

Instrument :
ECD_R
ClientSampleId :



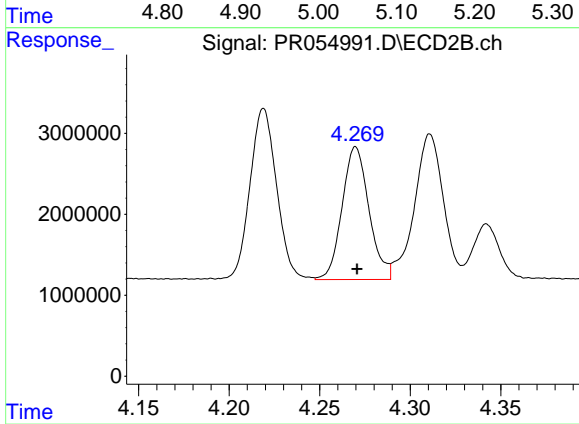
#5 AR-1016-3

R.T.: 4.219 min
Delta R.T.: 0.000 min
Response: 21887500
Conc: 514.40 ng/ml



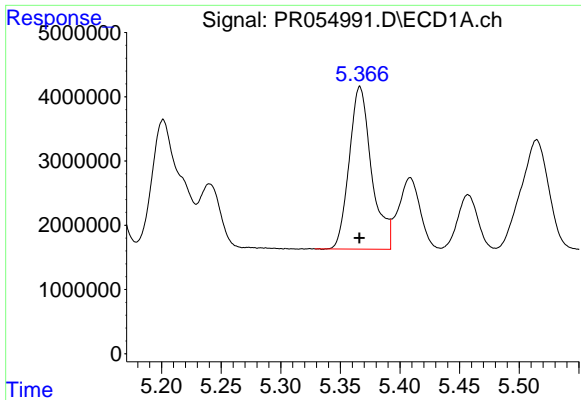
#6 AR-1016-4

R.T.: 5.051 min
Delta R.T.: 0.000 min
Response: 36317804
Conc: 500.67 ng/ml



#6 AR-1016-4

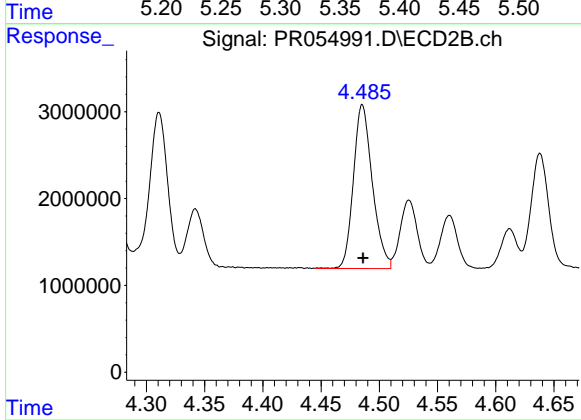
R.T.: 4.270 min
Delta R.T.: 0.000 min
Response: 16957281
Conc: 513.13 ng/ml



#7 AR-1016-5

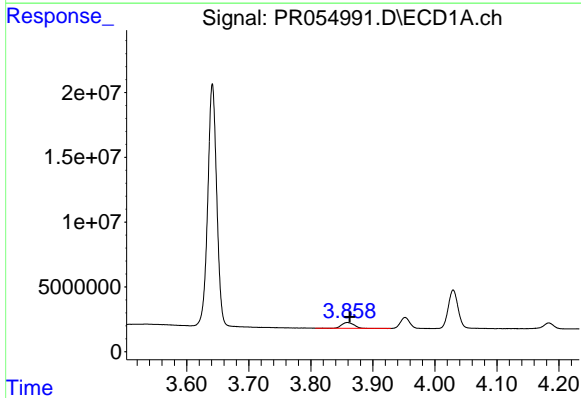
R.T.: 5.366 min
 Delta R.T.: 0.000 min
 Response: 33079010
 Conc: 512.88 ng/ml

Instrument :
 ECD_R
 ClientSampleId :



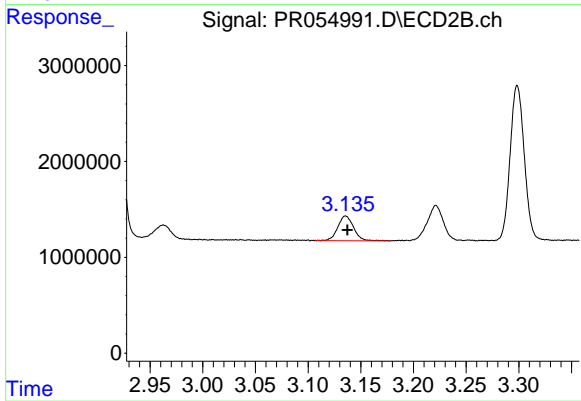
#7 AR-1016-5

R.T.: 4.485 min
 Delta R.T.: 0.000 min
 Response: 21404090
 Conc: 506.64 ng/ml



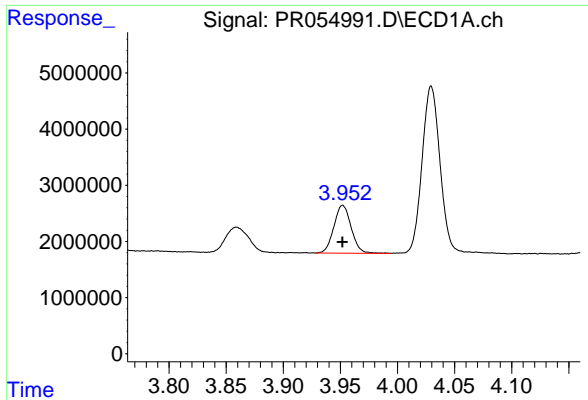
#8 AR-1221-1

R.T.: 3.859 min
 Delta R.T.: -0.004 min
 Response: 6111754
 Conc: 136.34 ng/ml



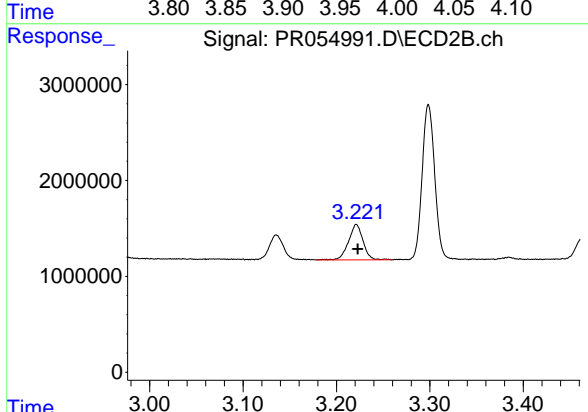
#8 AR-1221-1

R.T.: 3.136 min
 Delta R.T.: -0.002 min
 Response: 2689435
 Conc: 130.09 ng/ml

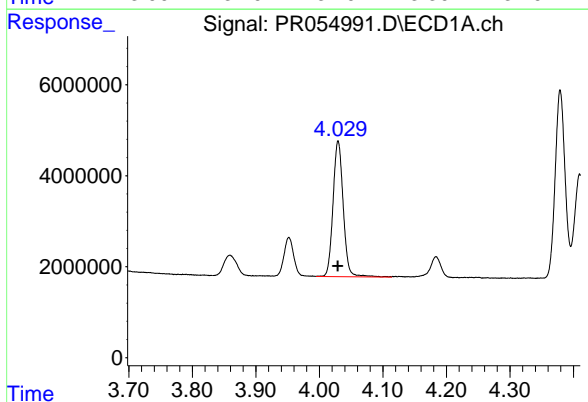


#9 AR-1221-2
R.T.: 3.952 min
Delta R.T.: 0.000 min
Response: 8992787
Conc: 274.13 ng/ml

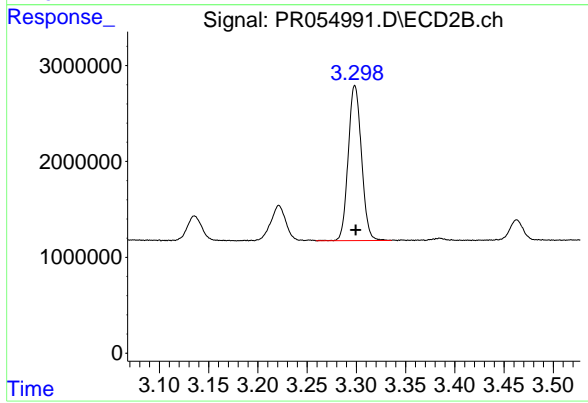
Instrument :
ECD_R
ClientSampleId :



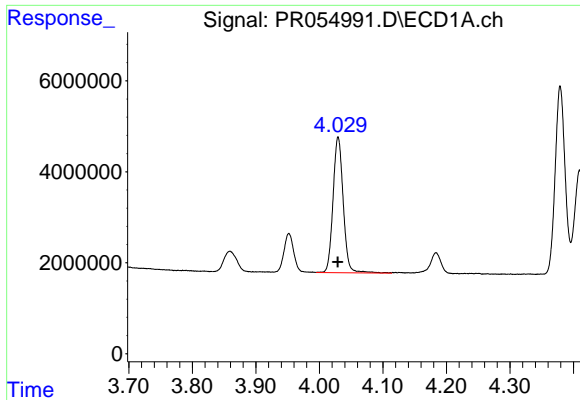
#9 AR-1221-2
R.T.: 3.221 min
Delta R.T.: -0.001 min
Response: 4009630
Conc: 254.44 ng/ml



#10 AR-1221-3
R.T.: 4.030 min
Delta R.T.: 0.000 min
Response: 33264300
Conc: 329.12 ng/ml



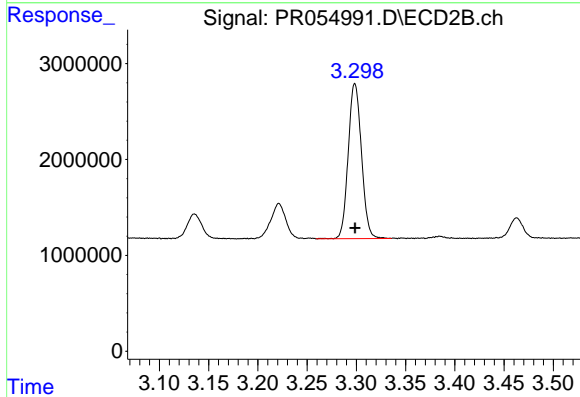
#10 AR-1221-3
R.T.: 3.299 min
Delta R.T.: 0.000 min
Response: 15157101
Conc: 313.76 ng/ml



#11 AR-1232-1

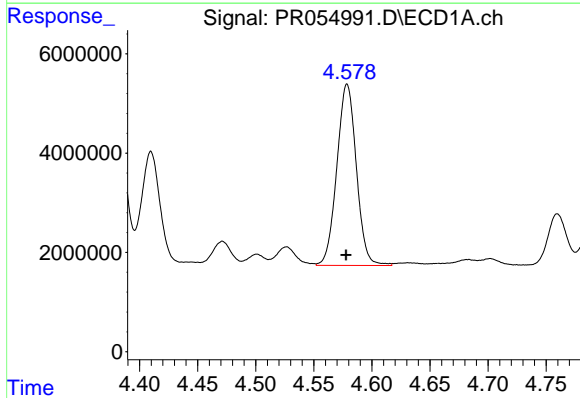
R.T.: 4.030 min
 Delta R.T.: 0.000 min
 Response: 33264300
 Conc: 358.63 ng/ml

Instrument :
 ECD_R
 ClientSampleId :



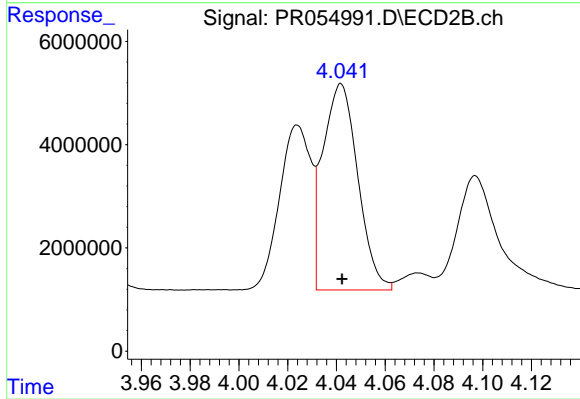
#11 AR-1232-1

R.T.: 3.299 min
 Delta R.T.: 0.000 min
 Response: 15157101
 Conc: 343.25 ng/ml



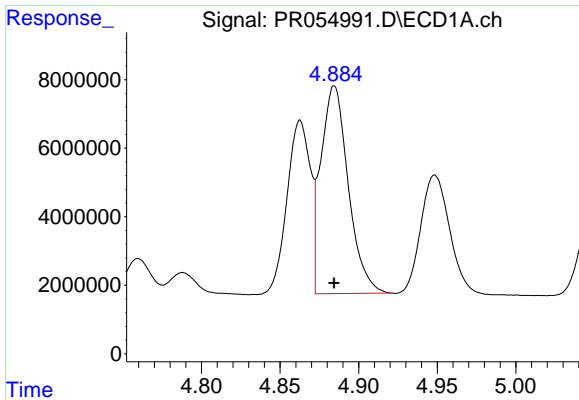
#12 AR-1232-2

R.T.: 4.579 min
 Delta R.T.: 0.000 min
 Response: 42755301
 Conc: 980.45 ng/ml



#12 AR-1232-2

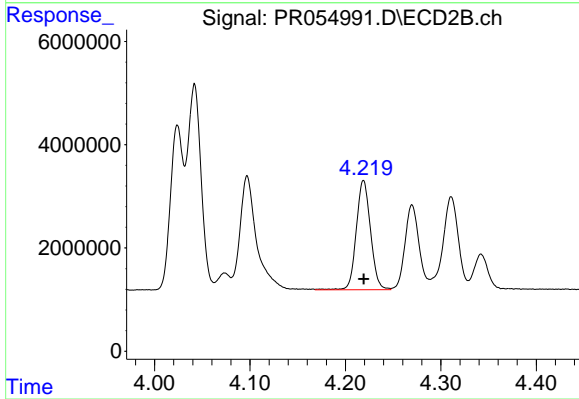
R.T.: 4.042 min
 Delta R.T.: 0.000 min
 Response: 39866276
 Conc: 993.41 ng/ml



#13 AR-1232-3

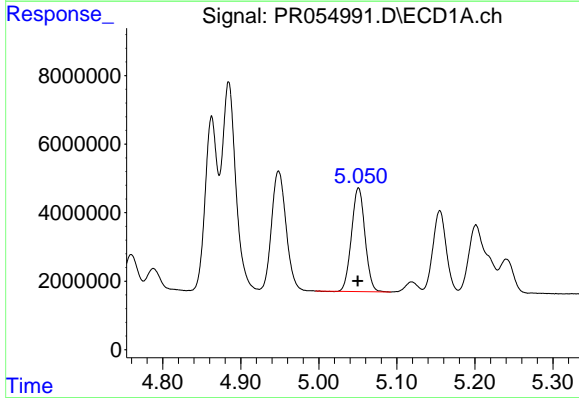
R.T.: 4.884 min
Delta R.T.: 0.000 min
Response: 73721252
Conc: 969.32 ng/ml

Instrument :
ECD_R
ClientSampleId :



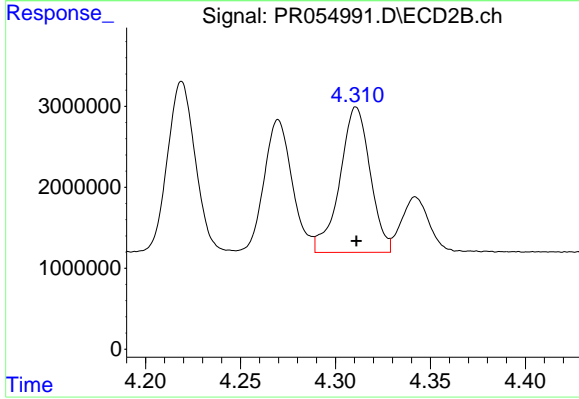
#13 AR-1232-3

R.T.: 4.219 min
Delta R.T.: 0.000 min
Response: 21887500
Conc: 946.98 ng/ml



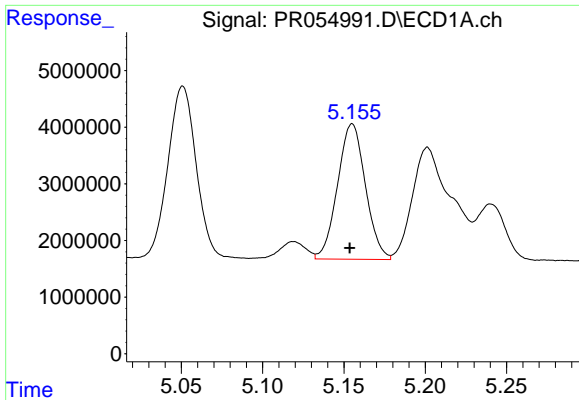
#14 AR-1232-4

R.T.: 5.051 min
Delta R.T.: 0.000 min
Response: 36317804
Conc: 1017.60 ng/ml



#14 AR-1232-4

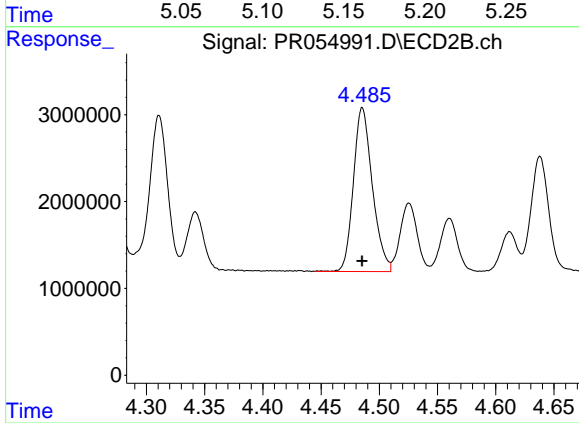
R.T.: 4.311 min
Delta R.T.: 0.000 min
Response: 19980610
Conc: 1080.52 ng/ml



#15 AR-1232-5

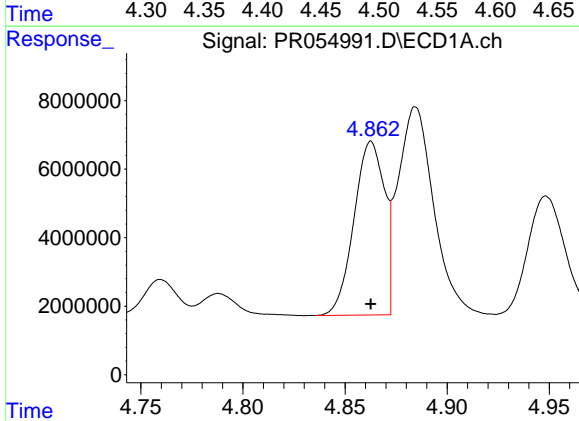
R.T.: 5.155 min
 Delta R.T.: 0.001 min
 Response: 28525210
 Conc: 1054.94 ng/ml

Instrument :
 ECD_R
 ClientSampleId :



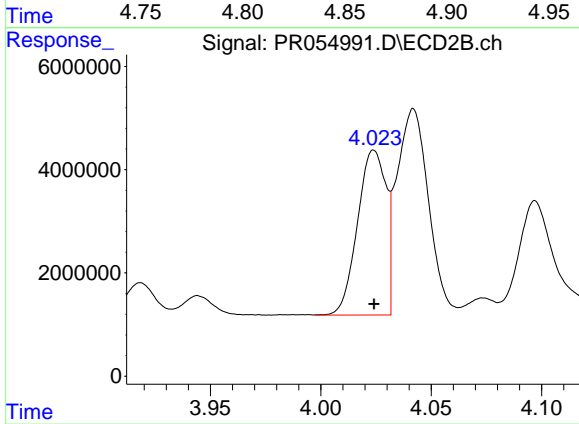
#15 AR-1232-5

R.T.: 4.485 min
 Delta R.T.: 0.000 min
 Response: 21404090
 Conc: 954.47 ng/ml



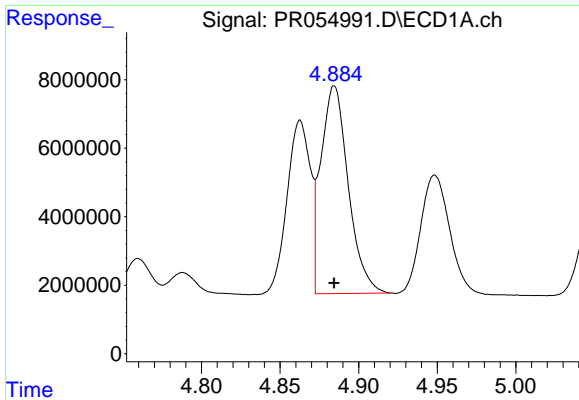
#16 AR-1242-1

R.T.: 4.863 min
 Delta R.T.: 0.000 min
 Response: 52482397
 Conc: 609.25 ng/ml



#16 AR-1242-1

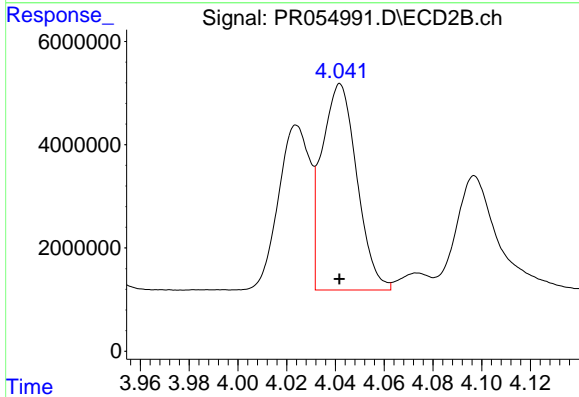
R.T.: 4.024 min
 Delta R.T.: 0.000 min
 Response: 28601798
 Conc: 596.94 ng/ml



#17 AR-1242-2

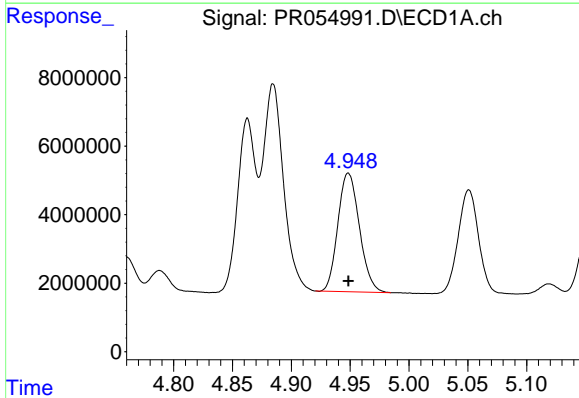
R.T.: 4.884 min
 Delta R.T.: 0.000 min
 Response: 73721252
 Conc: 607.60 ng/ml

Instrument :
 ECD_R
 ClientSampleId :



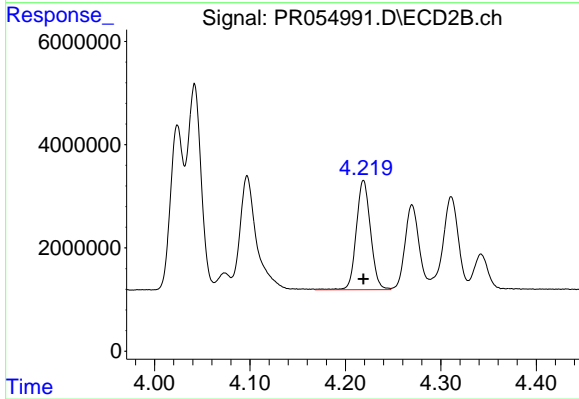
#17 AR-1242-2

R.T.: 4.042 min
 Delta R.T.: 0.000 min
 Response: 39866276
 Conc: 612.17 ng/ml



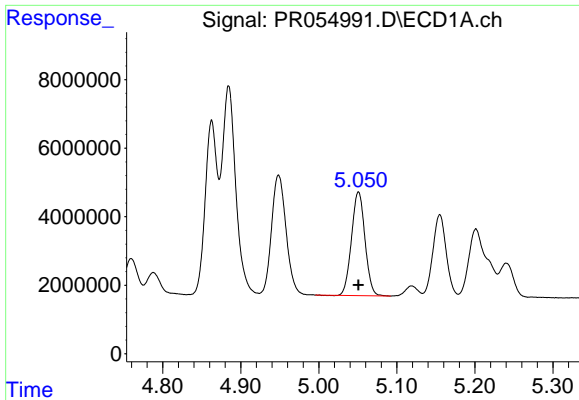
#18 AR-1242-3

R.T.: 4.949 min
 Delta R.T.: 0.000 min
 Response: 44123089
 Conc: 605.23 ng/ml



#18 AR-1242-3

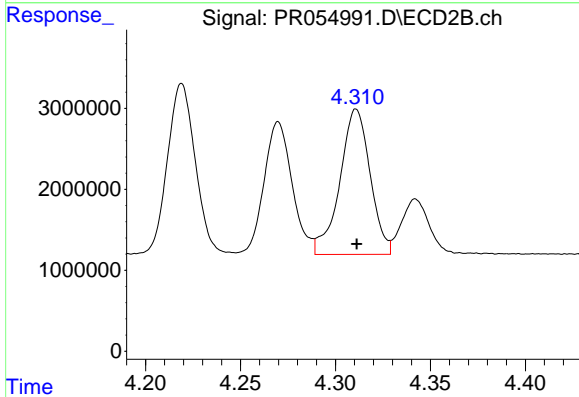
R.T.: 4.219 min
 Delta R.T.: 0.000 min
 Response: 21887500
 Conc: 618.94 ng/ml



#19 AR-1242-4

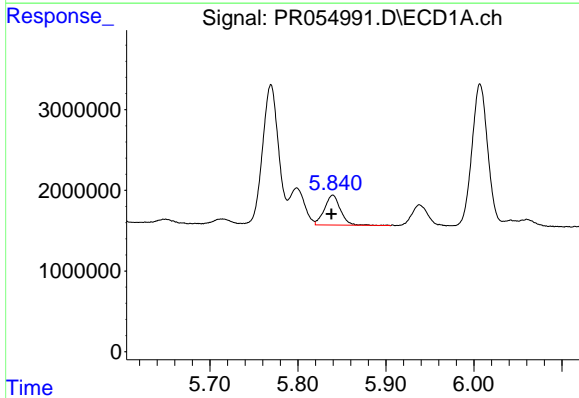
R.T.: 5.051 min
 Delta R.T.: 0.000 min
 Response: 36317804
 Conc: 613.38 ng/ml

Instrument :
 ECD_R
 ClientSampleId :



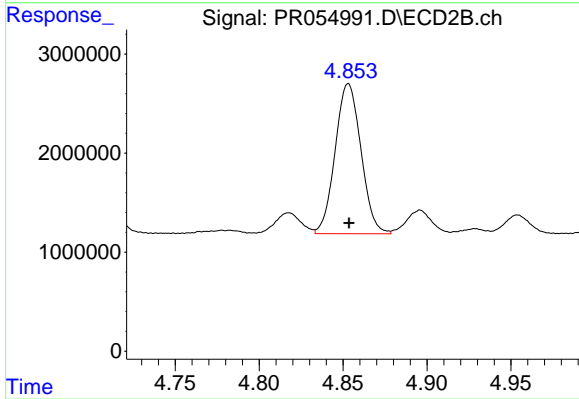
#19 AR-1242-4

R.T.: 4.311 min
 Delta R.T.: 0.000 min
 Response: 19980610
 Conc: 607.16 ng/ml



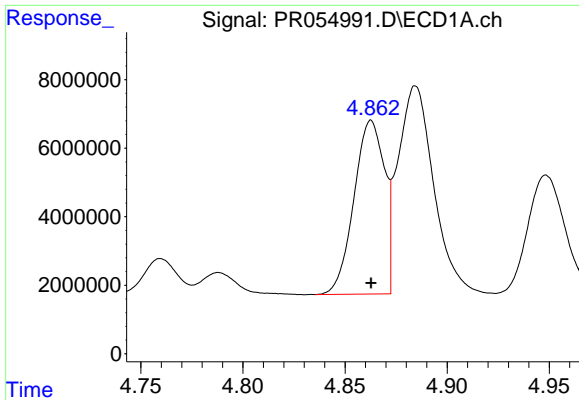
#20 AR-1242-5

R.T.: 5.840 min
 Delta R.T.: 0.002 min
 Response: 4676659
 Conc: 89.30 ng/ml



#20 AR-1242-5

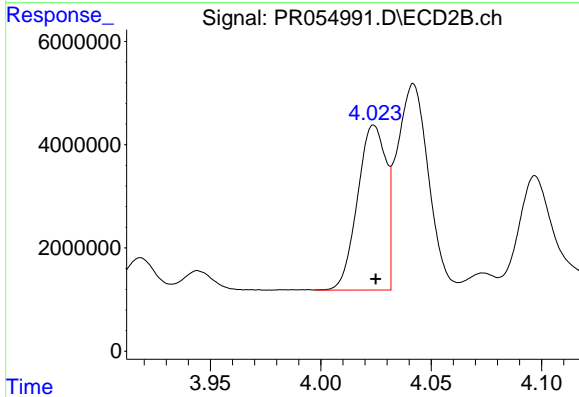
R.T.: 4.853 min
 Delta R.T.: 0.000 min
 Response: 16212323
 Conc: 375.04 ng/ml



#21 AR-1248-1

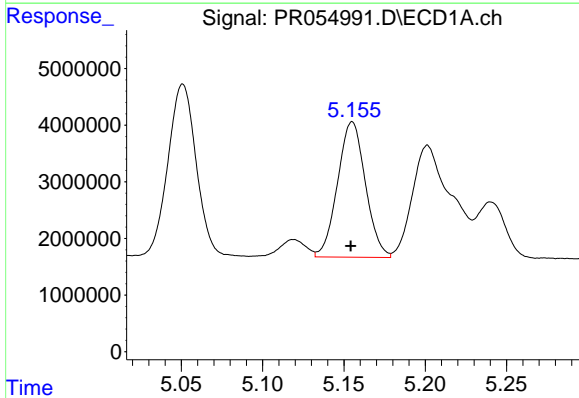
R.T.: 4.863 min
 Delta R.T.: 0.000 min
 Response: 52482397
 Conc: 779.89 ng/ml

Instrument :
 ECD_R
 ClientSampleId :



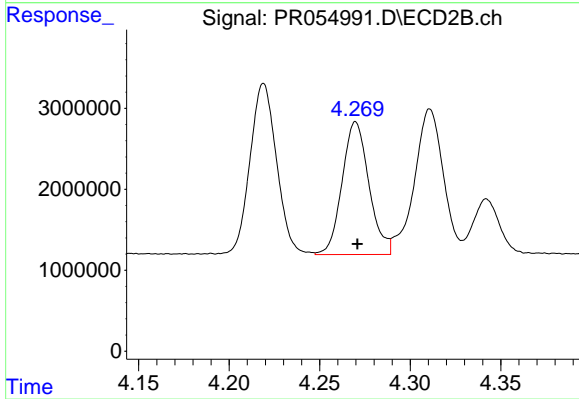
#21 AR-1248-1

R.T.: 4.024 min
 Delta R.T.: 0.000 min
 Response: 28601798
 Conc: 800.00 ng/ml



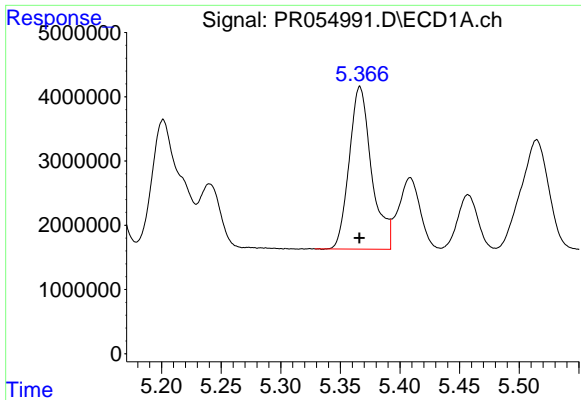
#22 AR-1248-2

R.T.: 5.155 min
 Delta R.T.: 0.000 min
 Response: 28525210
 Conc: 346.74 ng/ml



#22 AR-1248-2

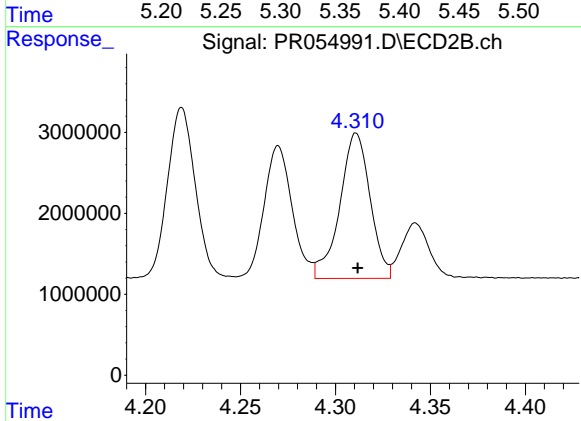
R.T.: 4.270 min
 Delta R.T.: -0.001 min
 Response: 16957281
 Conc: 357.60 ng/ml



#23 AR-1248-3

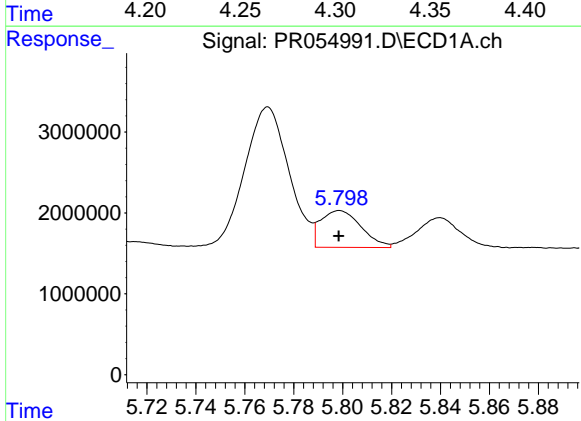
R.T.: 5.366 min
 Delta R.T.: 0.000 min
 Response: 33079010
 Conc: 369.65 ng/ml

Instrument :
 ECD_R
 ClientSampleId :



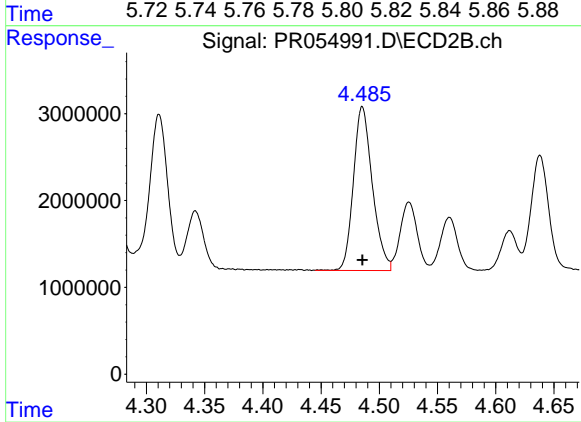
#23 AR-1248-3

R.T.: 4.311 min
 Delta R.T.: 0.000 min
 Response: 19980610
 Conc: 419.98 ng/ml



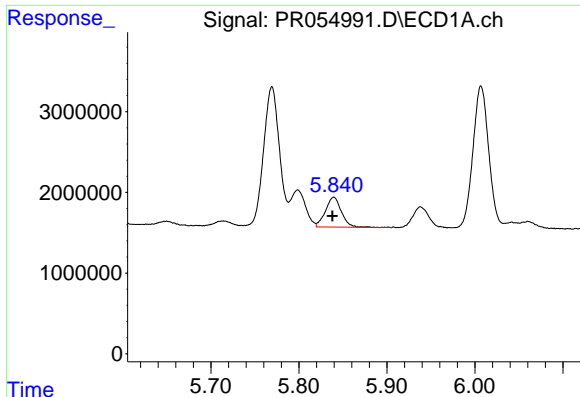
#24 AR-1248-4

R.T.: 5.799 min
 Delta R.T.: 0.000 min
 Response: 5228875
 Conc: 58.97 ng/ml



#24 AR-1248-4

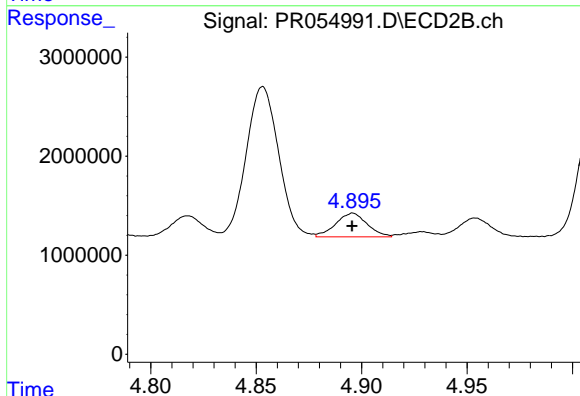
R.T.: 4.485 min
 Delta R.T.: 0.000 min
 Response: 21404090
 Conc: 363.01 ng/ml



#25 AR-1248-5

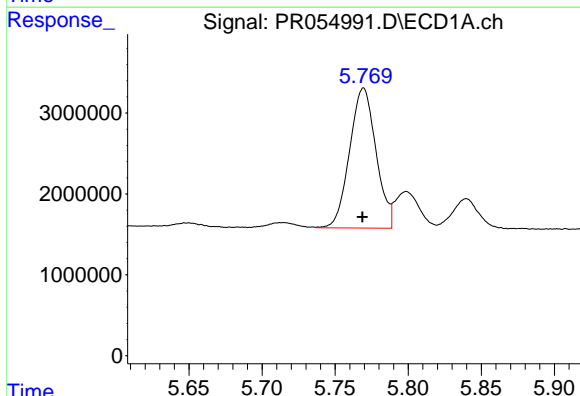
R.T.: 5.840 min
 Delta R.T.: 0.002 min
 Response: 4676659
 Conc: 54.38 ng/ml

Instrument :
 ECD_R
 ClientSampleId :



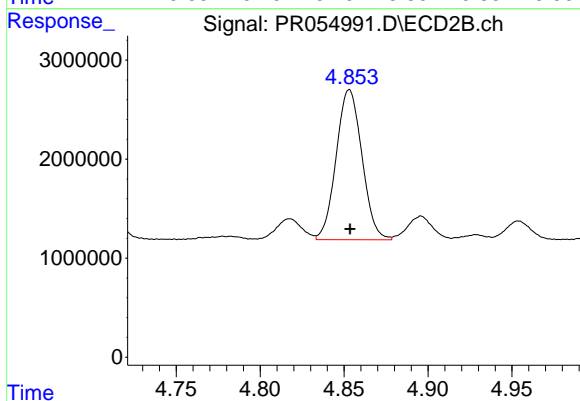
#25 AR-1248-5

R.T.: 4.896 min
 Delta R.T.: 0.000 min
 Response: 2493542
 Conc: 43.16 ng/ml



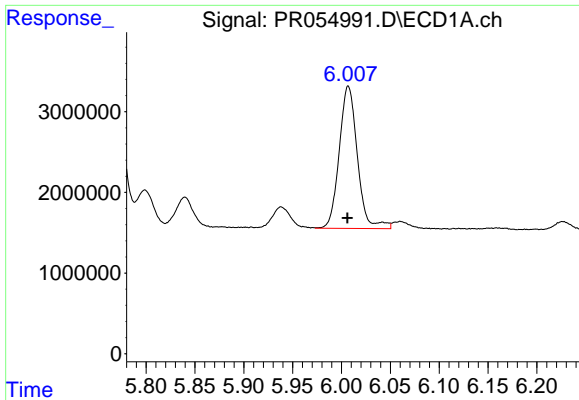
#26 AR-1254-1

R.T.: 5.769 min
 Delta R.T.: 0.000 min
 Response: 21781909
 Conc: 233.97 ng/ml



#26 AR-1254-1

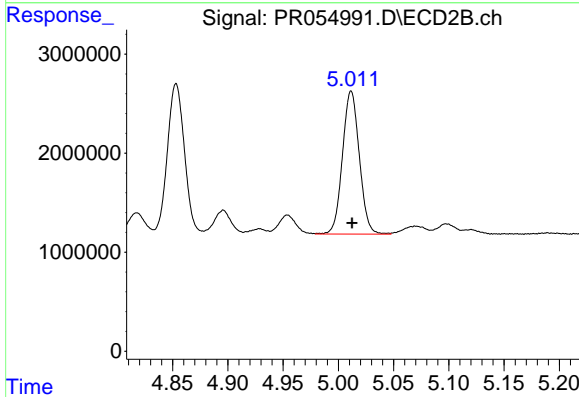
R.T.: 4.853 min
 Delta R.T.: 0.000 min
 Response: 16212323
 Conc: 185.34 ng/ml



#27 AR-1254-2

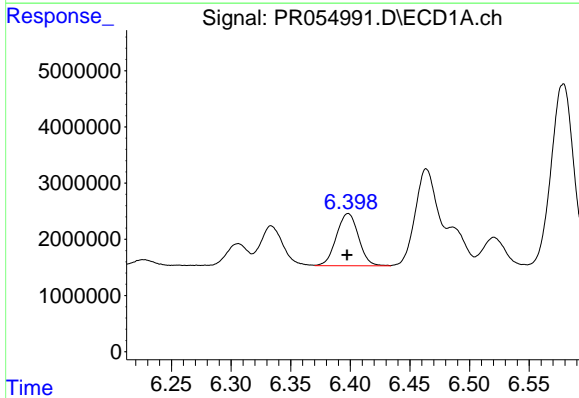
R.T.: 6.007 min
 Delta R.T.: 0.001 min
 Response: 22826139
 Conc: 174.72 ng/ml

Instrument :
 ECD_R
 ClientSampleId :



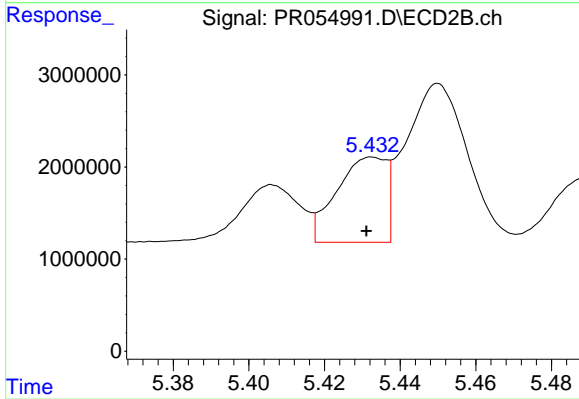
#27 AR-1254-2

R.T.: 5.012 min
 Delta R.T.: 0.000 min
 Response: 15328336
 Conc: 198.71 ng/ml



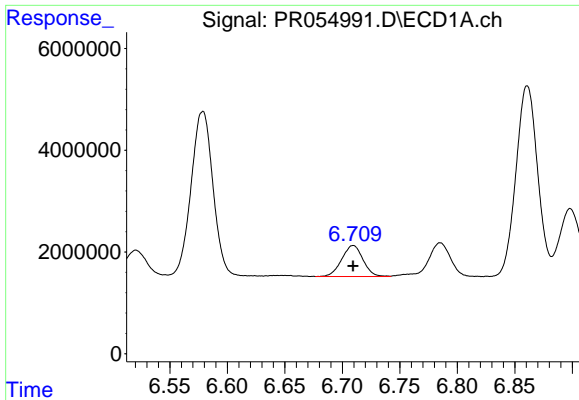
#28 AR-1254-3

R.T.: 6.398 min
 Delta R.T.: 0.000 min
 Response: 12009498
 Conc: 95.07 ng/ml



#28 AR-1254-3

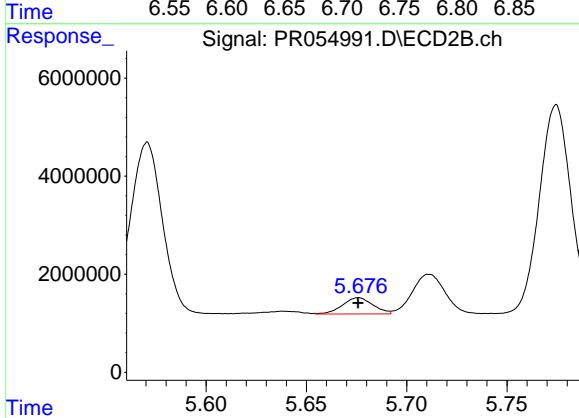
R.T.: 5.433 min
 Delta R.T.: 0.002 min
 Response: 8437692
 Conc: 68.45 ng/ml



#29 AR-1254-4

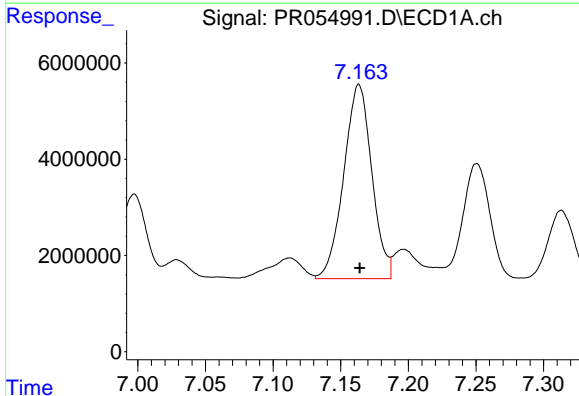
R.T.: 6.709 min
 Delta R.T.: 0.000 min
 Response: 7883279
 Conc: 85.01 ng/ml

Instrument :
 ECD_R
 ClientSampleId :



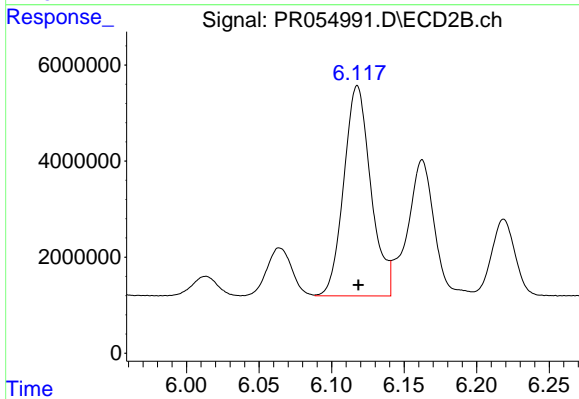
#29 AR-1254-4

R.T.: 5.676 min
 Delta R.T.: 0.000 min
 Response: 3520089
 Conc: 44.73 ng/ml



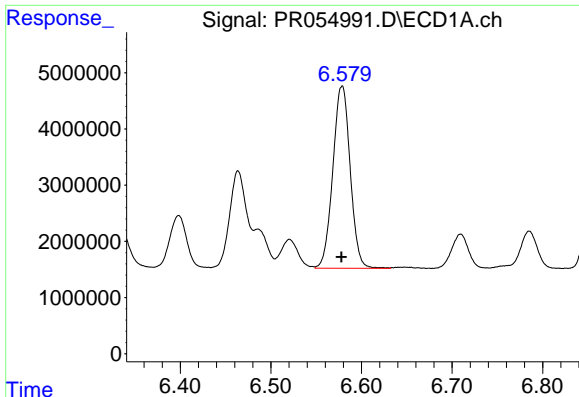
#30 AR-1254-5

R.T.: 7.163 min
 Delta R.T.: 0.000 min
 Response: 58354951
 Conc: 593.61 ng/ml



#30 AR-1254-5

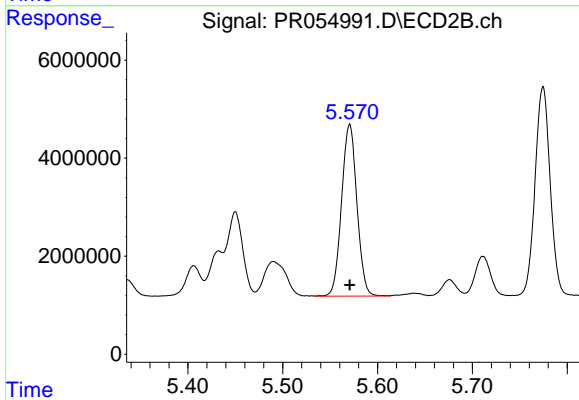
R.T.: 6.118 min
 Delta R.T.: 0.000 min
 Response: 56778979
 Conc: 496.32 ng/ml



#31 AR-1260-1

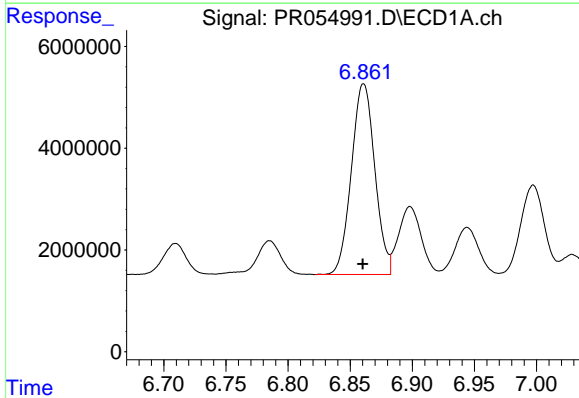
R.T.: 6.578 min
 Delta R.T.: 0.000 min
 Response: 43179482
 Conc: 495.90 ng/ml

Instrument :
 ECD_R
 ClientSampleId :



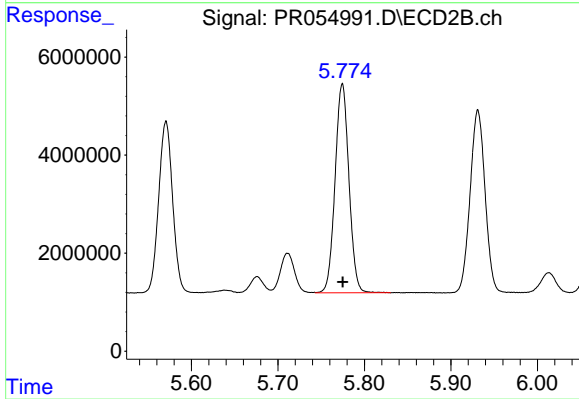
#31 AR-1260-1

R.T.: 5.571 min
 Delta R.T.: 0.000 min
 Response: 39420285
 Conc: 498.78 ng/ml



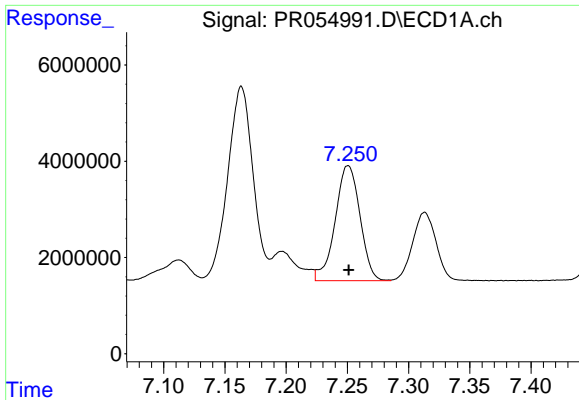
#32 AR-1260-2

R.T.: 6.861 min
 Delta R.T.: 0.000 min
 Response: 49253709
 Conc: 491.67 ng/ml



#32 AR-1260-2

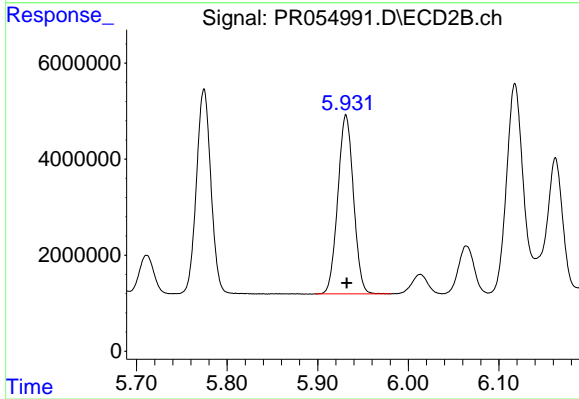
R.T.: 5.775 min
 Delta R.T.: 0.000 min
 Response: 47502463
 Conc: 504.04 ng/ml



#33 AR-1260-3

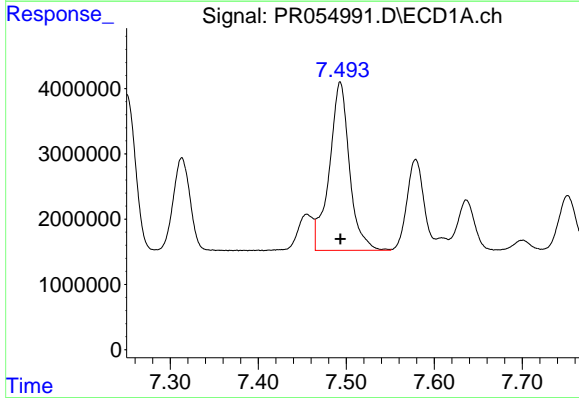
R.T.: 7.251 min
 Delta R.T.: 0.000 min
 Response: 33743437
 Conc: 502.75 ng/ml

Instrument :
 ECD_R
 ClientSampleId :



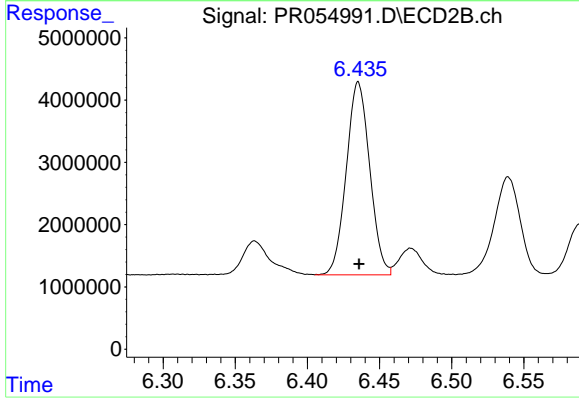
#33 AR-1260-3

R.T.: 5.931 min
 Delta R.T.: 0.000 min
 Response: 44775303
 Conc: 501.45 ng/ml



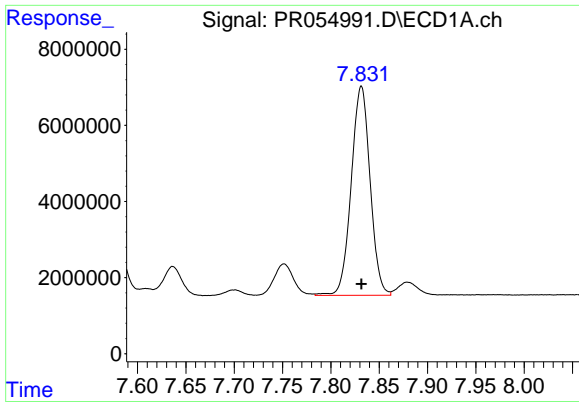
#34 AR-1260-4

R.T.: 7.493 min
 Delta R.T.: 0.000 min
 Response: 41051010
 Conc: 510.20 ng/ml



#34 AR-1260-4

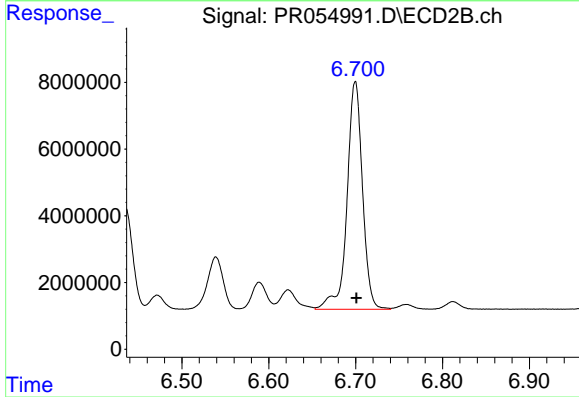
R.T.: 6.435 min
 Delta R.T.: 0.000 min
 Response: 35086595
 Conc: 509.74 ng/ml



#35 AR-1260-5

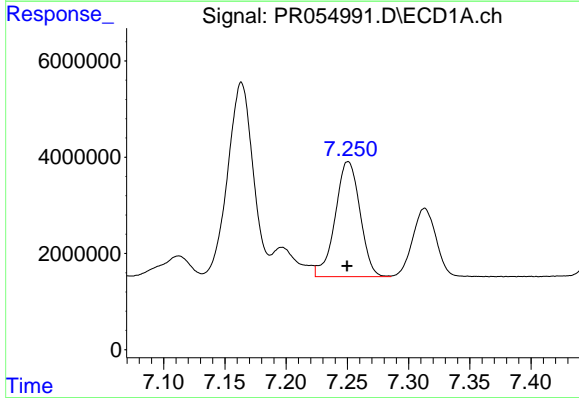
R.T.: 7.831 min
 Delta R.T.: 0.000 min
 Response: 74763581
 Conc: 488.10 ng/ml

Instrument :
 ECD_R
 ClientSampleId :



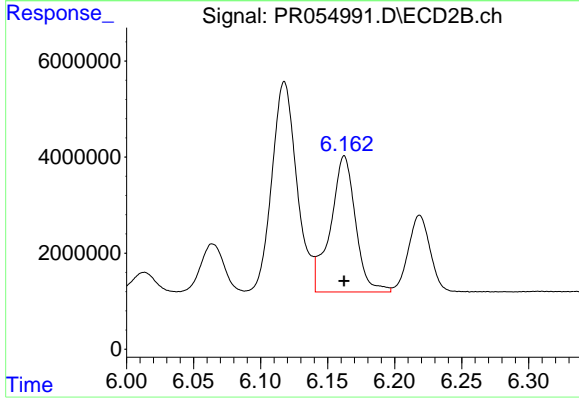
#35 AR-1260-5

R.T.: 6.700 min
 Delta R.T.: -0.001 min
 Response: 84551492
 Conc: 515.38 ng/ml



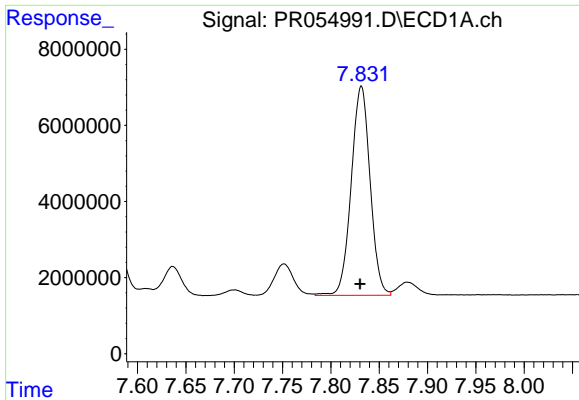
#36 AR-1262-1

R.T.: 7.251 min
 Delta R.T.: 0.001 min
 Response: 33743437
 Conc: 326.17 ng/ml



#36 AR-1262-1

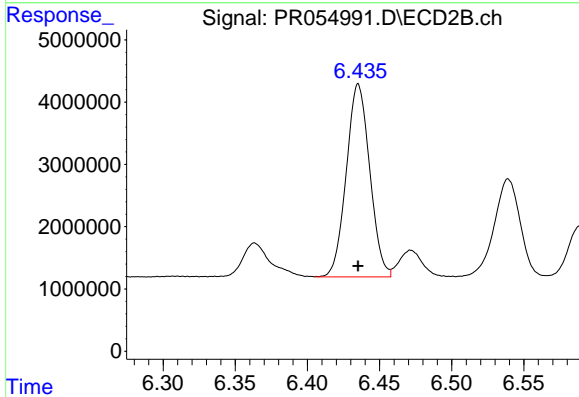
R.T.: 6.162 min
 Delta R.T.: 0.000 min
 Response: 36855328
 Conc: 344.48 ng/ml



#37 AR-1262-2

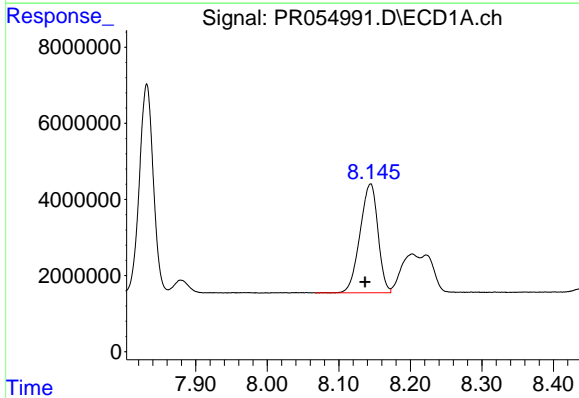
R.T.: 7.831 min
 Delta R.T.: 0.001 min
 Response: 74763581
 Conc: 415.24 ng/ml

Instrument :
 ECD_R
 ClientSampleId :



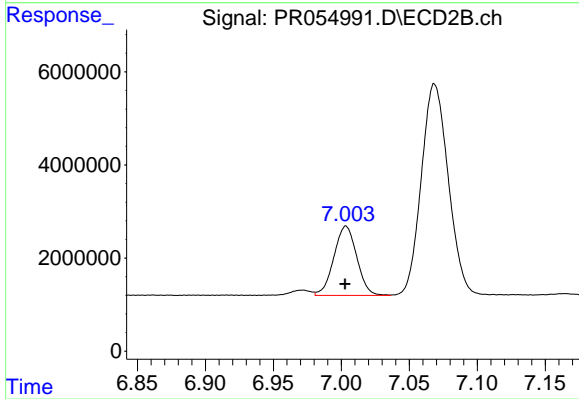
#37 AR-1262-2

R.T.: 6.435 min
 Delta R.T.: 0.000 min
 Response: 35086595
 Conc: 360.50 ng/ml



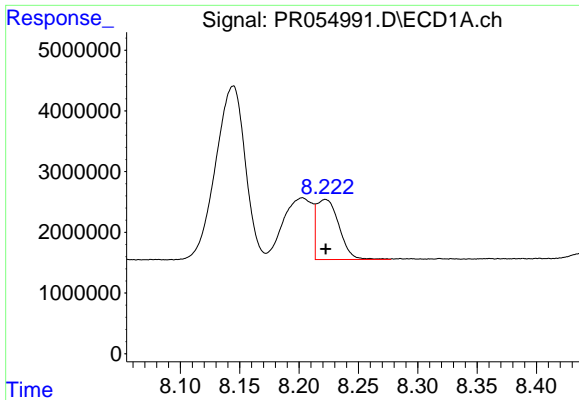
#38 AR-1262-3

R.T.: 8.144 min
 Delta R.T.: 0.007 min
 Response: 49779712
 Conc: 399.27 ng/ml



#38 AR-1262-3

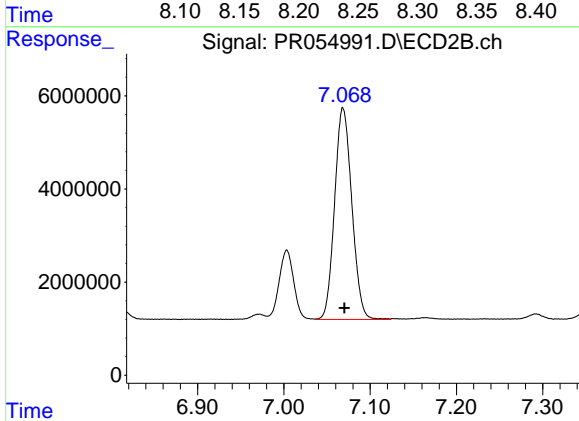
R.T.: 7.003 min
 Delta R.T.: 0.000 min
 Response: 17468019
 Conc: 227.61 ng/ml



#39 AR-1262-4

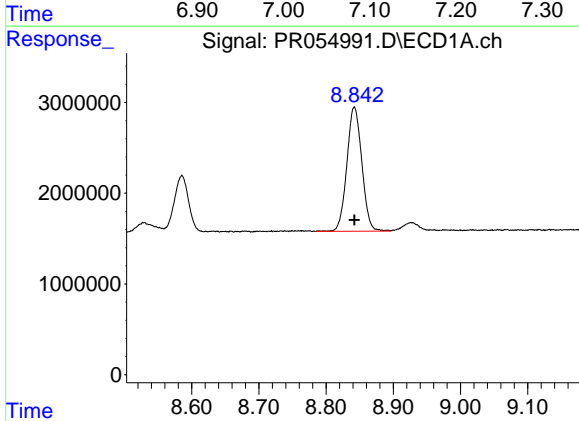
R.T.: 8.222 min
 Delta R.T.: 0.000 min
 Response: 13009314
 Conc: 232.48 ng/ml

Instrument :
 ECD_R
 ClientSampleId :



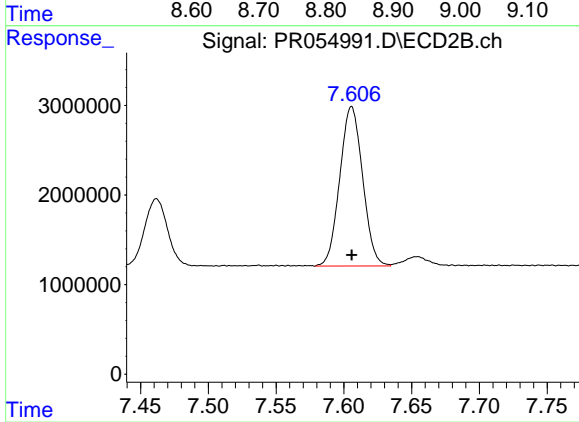
#39 AR-1262-4

R.T.: 7.069 min
 Delta R.T.: -0.002 min
 Response: 62976359
 Conc: 430.61 ng/ml



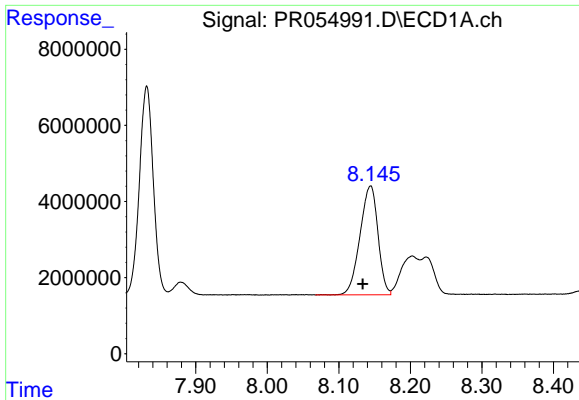
#40 AR-1262-5

R.T.: 8.842 min
 Delta R.T.: 0.000 min
 Response: 21176611
 Conc: 309.70 ng/ml



#40 AR-1262-5

R.T.: 7.606 min
 Delta R.T.: 0.000 min
 Response: 20871949
 Conc: 302.34 ng/ml

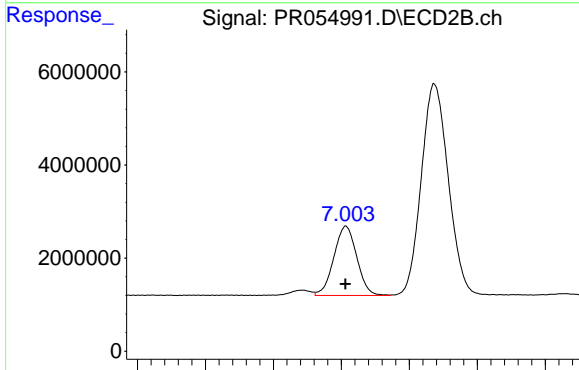


#41 AR-1268-1

R.T.: 8.144 min
 Delta R.T.: 0.011 min
 Response: 49779712
 Conc: 246.64 ng/ml

Instrument :
 ECD_R
 ClientSampleId :

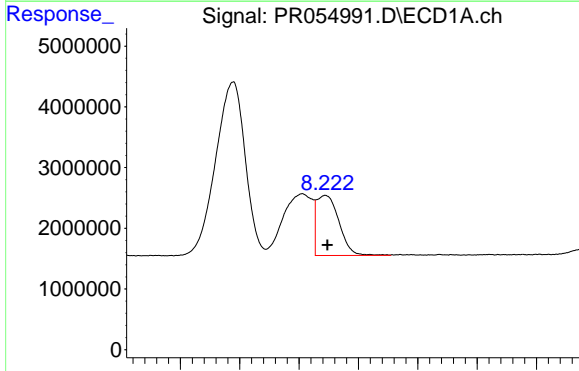
Time 7.90 8.00 8.10 8.20 8.30 8.40



#41 AR-1268-1

R.T.: 7.003 min
 Delta R.T.: 0.000 min
 Response: 17468019
 Conc: 80.17 ng/ml

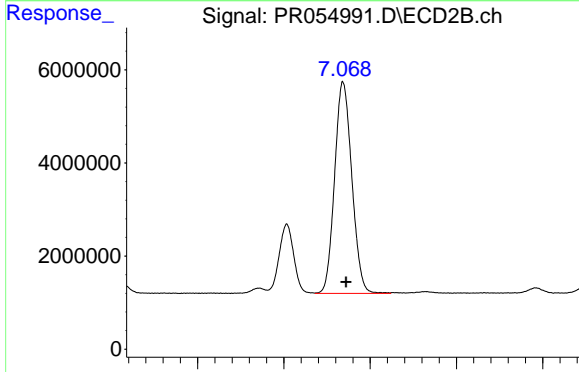
Time 6.85 6.90 6.95 7.00 7.05 7.10 7.15



#42 AR-1268-2

R.T.: 8.222 min
 Delta R.T.: -0.002 min
 Response: 13009314
 Conc: 70.11 ng/ml

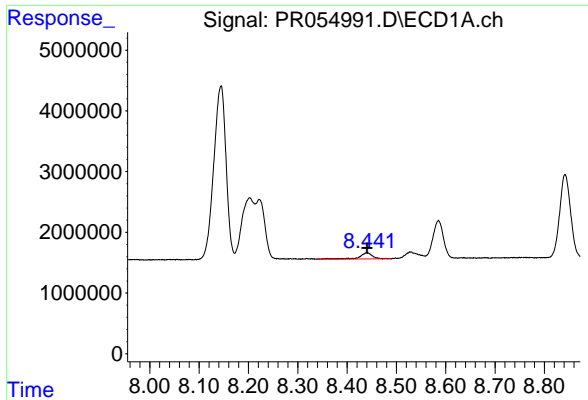
Time 8.10 8.15 8.20 8.25 8.30 8.35 8.40



#42 AR-1268-2

R.T.: 7.069 min
 Delta R.T.: -0.003 min
 Response: 62976359
 Conc: 314.47 ng/ml

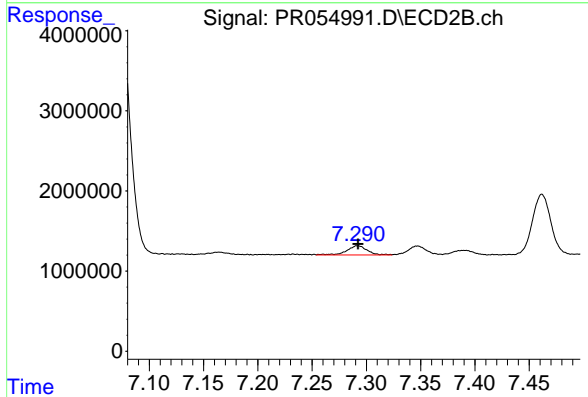
Time 6.90 7.00 7.10 7.20 7.30



#43 AR-1268-3

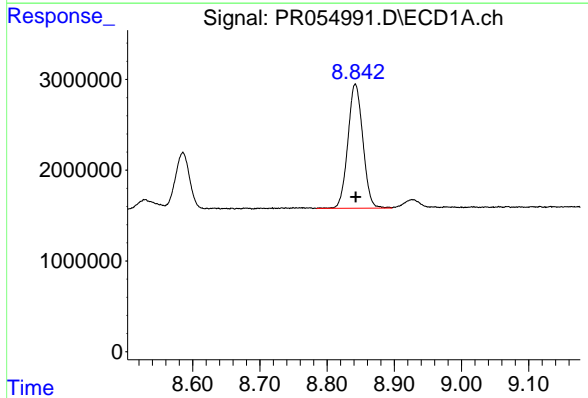
R.T.: 8.441 min
 Delta R.T.: 0.000 min
 Response: 1887409
 Conc: 12.11 ng/ml

Instrument :
 ECD_R
 ClientSampleId :



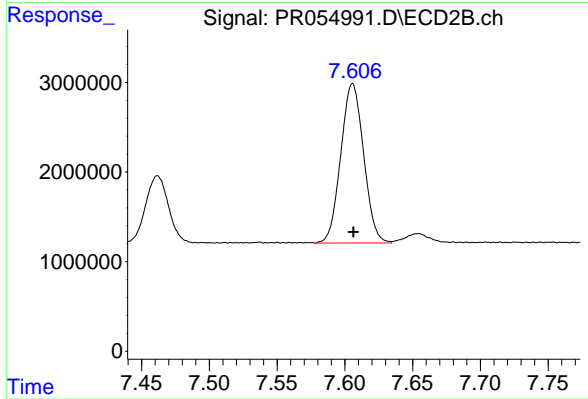
#43 AR-1268-3

R.T.: 7.292 min
 Delta R.T.: 0.000 min
 Response: 1500565
 Conc: 9.01 ng/ml



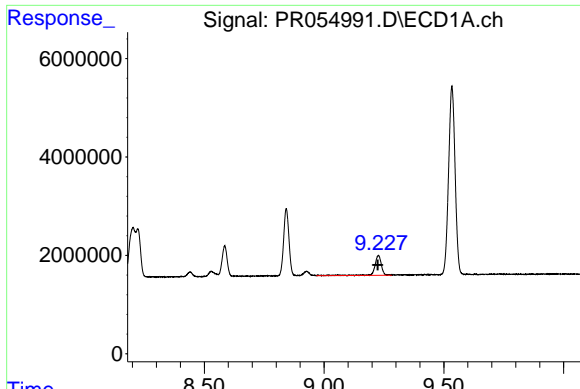
#44 AR-1268-4

R.T.: 8.842 min
 Delta R.T.: 0.000 min
 Response: 21176611
 Conc: 289.02 ng/ml



#44 AR-1268-4

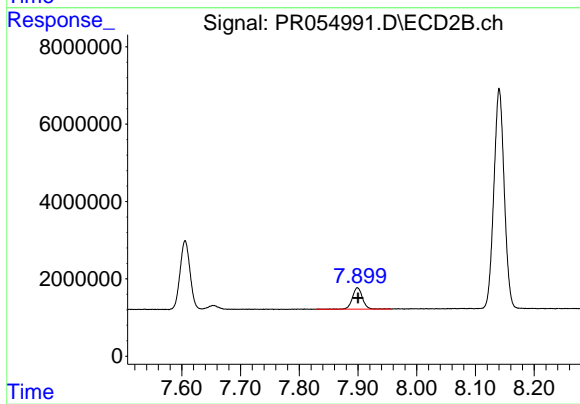
R.T.: 7.606 min
 Delta R.T.: 0.000 min
 Response: 20871949
 Conc: 280.16 ng/ml



#45 AR-1268-5

R.T.: 9.227 min
Delta R.T.: 0.003 min
Response: 7992617
Conc: 15.99 ng/ml

Instrument :
ECD_R
ClientSampleId :



#45 AR-1268-5

R.T.: 7.899 min
Delta R.T.: -0.001 min
Response: 6502830
Conc: 12.23 ng/ml