

Data Path : Z:\pestpcbsrv\HPCHEM1\ECD\_R\Data\PR062722\  
 Data File : PR055029.D  
 Signal(s) : Signal #1: ECD1A.ch Signal #2: ECD2B.ch  
 Acq On : 28 Jun 2022 05:18  
 Operator : AJ\MA  
 Sample : I.BLK  
 Misc :  
 ALS Vial : 2 Sample Multiplier: 1

**Instrument :**  
 ECD\_R  
**ClientSampleId :**  
 I.BLK

**Manual Integrations**  
**APPROVED**

Reviewed By :Yogesh Patel 06/28/2022  
 Supervised By :Ankita Jodhani 06/28/2022

Integration File signal 1: autoint1.e  
 Integration File signal 2: autoint2.e  
 Quant Time: Jun 28 05:53:55 2022  
 Quant Method : Z:\pestpcbsrv\HPCHEM1\ECD\_R\Method\PR062722.M  
 Quant Title : GC EXTRACTABLES  
 QLast Update : Mon Jun 27 17:05:06 2022  
 Response via : Initial Calibration  
 Integrator: ChemStation

Volume Inj. : 2 µl  
 Signal #1 Phase : ZB-MR1 Signal #2 Phase: ZB-MR2  
 Signal #1 Info : 30Mx0.32mmx 0.50µ Signal #2 Info : 30M x 0.32mm x 0.25µm

Compound	RT#1	RT#2	Resp#1	Resp#2	ng/ml	ng/ml
-----						
System Monitoring Compounds						
1) SA Tetrachlo...	3.641	2.912	92747772	41483443	25.499	24.849
2) SA Decachlor...	9.531	8.137	39976842	38678685	27.725	27.529m

Target Compounds

(f)=RT Delta > 1/2 Window (#)=Amounts differ by > 25% (m)=manual int.

Data Path : Z:\pestpcbsrv\HPCHEM1\ECD\_R\Data\PR062722\  
 Data File : PR055029.D  
 Signal(s) : Signal #1: ECD1A.ch Signal #2: ECD2B.ch  
 Acq On : 28 Jun 2022 05:18  
 Operator : AJ\MA  
 Sample : I.BLK  
 Misc :  
 ALS Vial : 2 Sample Multiplier: 1

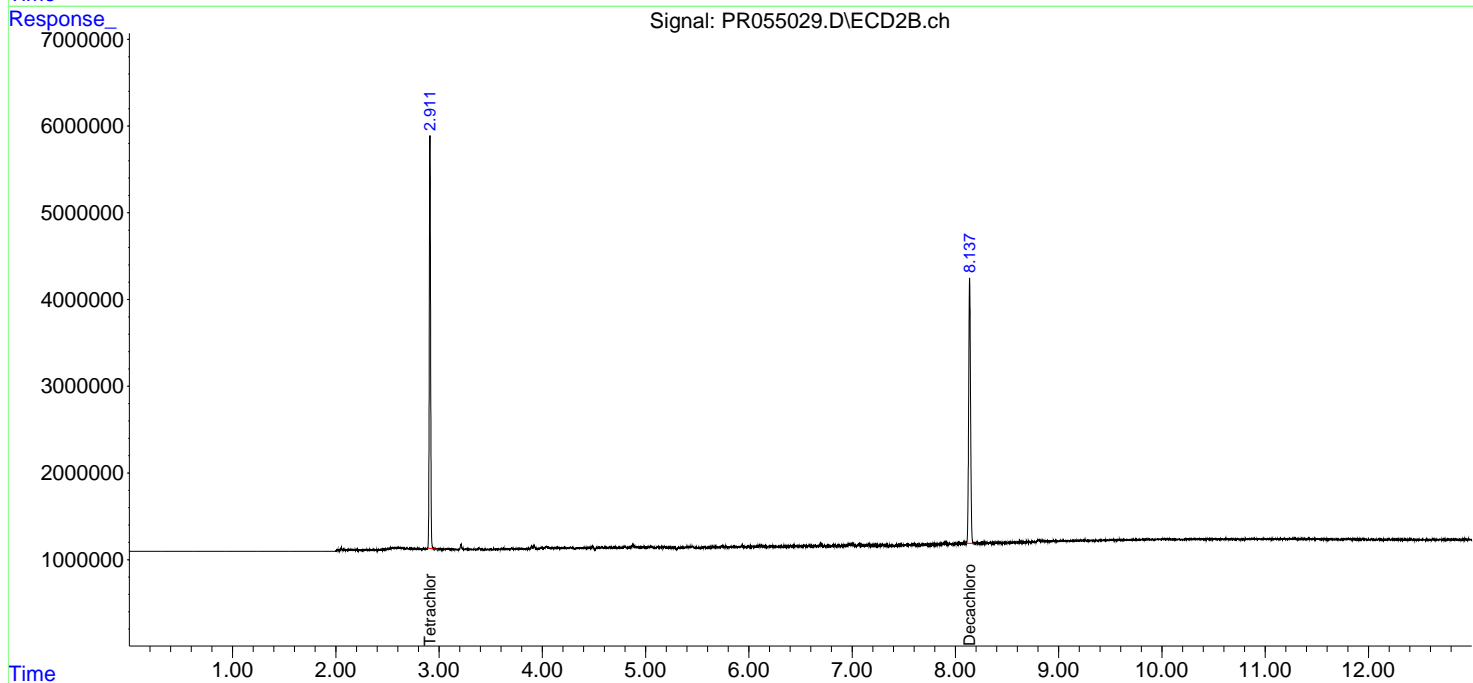
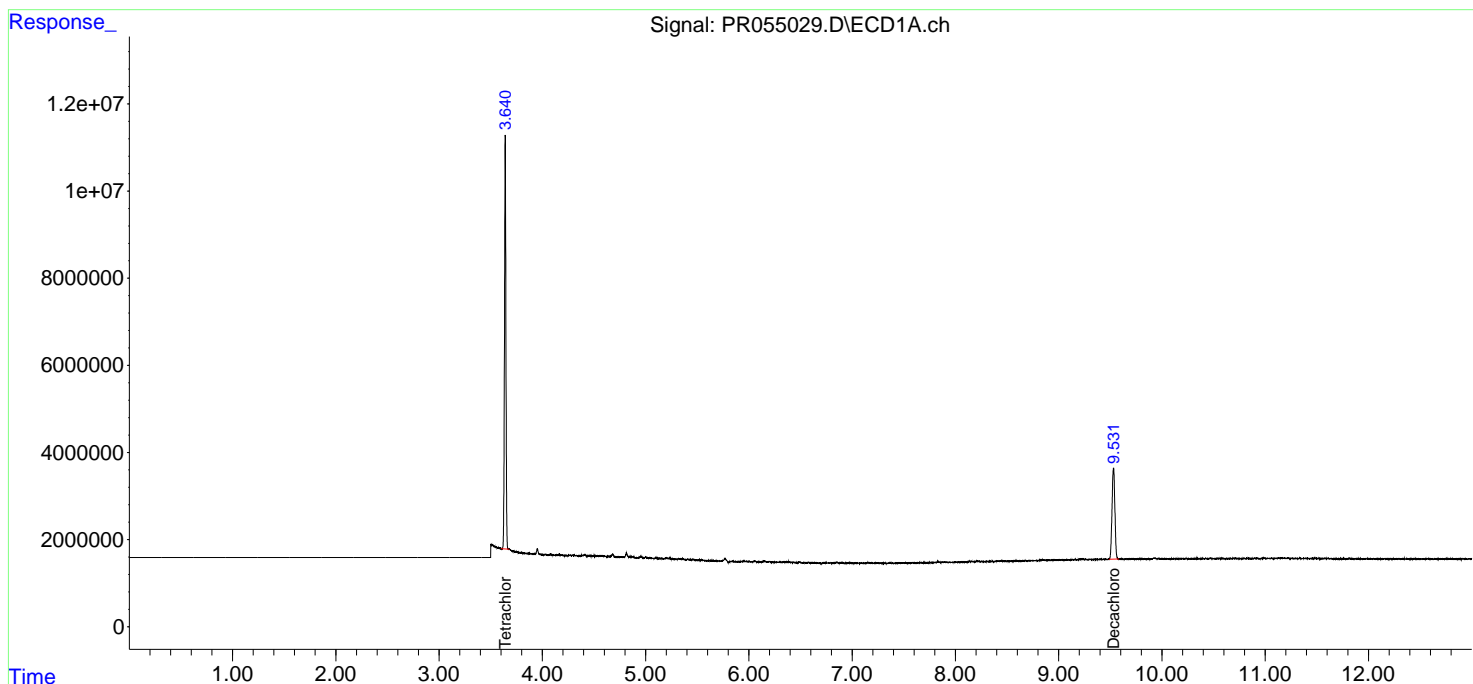
Instrument :  
 ECD\_R  
 ClientSampleID :  
 I.BLK

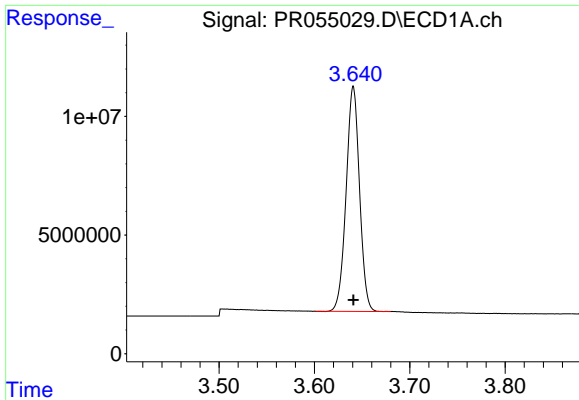
Manual Integrations  
**APPROVED**

Reviewed By :Yogesh Patel 06/28/2022  
 Supervised By :Ankita Jodhani 06/28/2022

Integration File signal 1: autoint1.e  
 Integration File signal 2: autoint2.e  
 Quant Time: Jun 28 05:53:55 2022  
 Quant Method : Z:\pestpcbsrv\HPCHEM1\ECD\_R\Method\PR062722.M  
 Quant Title : GC EXTRACTABLES  
 QLast Update : Mon Jun 27 17:05:06 2022  
 Response via : Initial Calibration  
 Integrator: ChemStation

Volume Inj. : 2 µl  
 Signal #1 Phase : ZB-MR1 Signal #2 Phase: ZB-MR2  
 Signal #1 Info : 30Mx0.32mmx 0.50µ Signal #2 Info : 30M x 0.32mm x 0.25µm





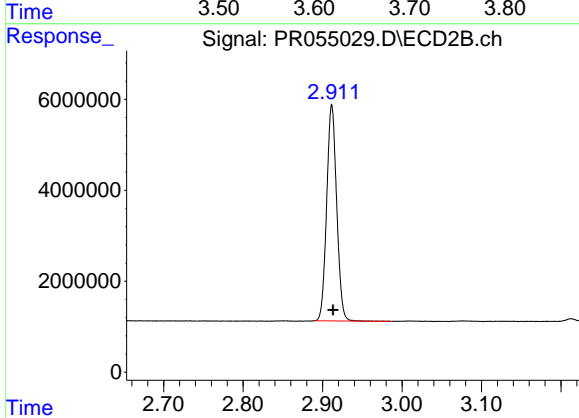
#1 Tetrachloro-m-xylene

R.T.: 3.641 min  
 Delta R.T.: 0.000 min  
 Response: 92747772  
 Conc: 25.50 ng/ml

Instrument :  
 ECD\_R  
 ClientSampleId :  
 I.BLK

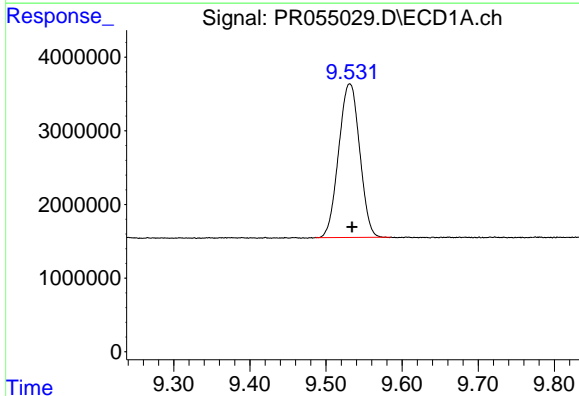
Manual Integrations  
 APPROVED

Reviewed By :Yogesh Patel 06/28/2022  
 Supervised By :Ankita Jodhani 06/28/2022



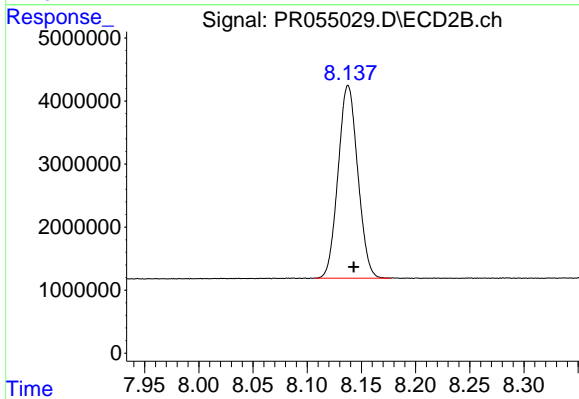
#1 Tetrachloro-m-xylene

R.T.: 2.912 min  
 Delta R.T.: -0.001 min  
 Response: 41483443  
 Conc: 24.85 ng/ml



#2 Decachlorobiphenyl

R.T.: 9.531 min  
 Delta R.T.: -0.003 min  
 Response: 39976842  
 Conc: 27.72 ng/ml



#2 Decachlorobiphenyl

R.T.: 8.137 min  
 Delta R.T.: -0.005 min  
 Response: 38678685  
 Conc: 27.53 ng/ml m