

Data Path : Z:\pestpcbsrv\HPCHEM1\ECD_R\Data\PR062722\
 Data File : PR055032.D
 Signal(s) : Signal #1: ECD1A.ch Signal #2: ECD2B.ch
 Acq On : 28 Jun 2022 06:05
 Operator : AJ\MA
 Sample : N3472-04
 Misc :
 ALS Vial : 53 Sample Multiplier: 1

Instrument :
 ECD_R
ClientSampleId :
 20071

Manual Integrations
APPROVED

Reviewed By :Yogesh Patel 06/28/2022
 Supervised By :Ankita Jodhani 06/28/2022

Integration File signal 1: autoint1.e
 Integration File signal 2: autoint2.e
 Quant Time: Jun 28 06:40:46 2022
 Quant Method : Z:\pestpcbsrv\HPCHEM1\ECD_R\Method\PR062722.M
 Quant Title : GC EXTRACTABLES
 QLast Update : Mon Jun 27 17:05:06 2022
 Response via : Initial Calibration
 Integrator: ChemStation

Volume Inj. : 2 µl
 Signal #1 Phase : ZB-MR1 Signal #2 Phase: ZB-MR2
 Signal #1 Info : 30Mx0.32mmx 0.50µ Signal #2 Info : 30M x 0.32mm x 0.25µm

Compound	RT#1	RT#2	Resp#1	Resp#2	ng/ml	ng/ml

System Monitoring Compounds						
1) SA Tetrachlo...	3.649	2.925	39121151	18806477	10.756m	11.265
2) SA Decachlor...	9.534	8.143	19012963	17556963	13.186m	12.496
Target Compounds						
31) L7 AR-1260-1	6.583	5.579	5666022	3232011	65.072	40.894 #
32) L7 AR-1260-2	6.866	5.786	6699577	8988837	66.877	95.379 #
33) L7 AR-1260-3	7.254	5.939	5998145	3840838	89.368	43.014 #
34) L7 AR-1260-4	7.495	6.441	6182884	4259484	76.844m	61.882m
35) L7 AR-1260-5	7.833	6.705	12906581	7313351	84.261	44.578m#

(f)=RT Delta > 1/2 Window (#)=Amounts differ by > 25% (m)=manual int.

Data Path : Z:\pestpcbsrv\HPCHEM1\ECD_R\Data\PR062722\
 Data File : PR055032.D
 Signal(s) : Signal #1: ECD1A.ch Signal #2: ECD2B.ch
 Acq On : 28 Jun 2022 06:05
 Operator : AJ\MA
 Sample : N3472-04
 Misc :
 ALS Vial : 53 Sample Multiplier: 1

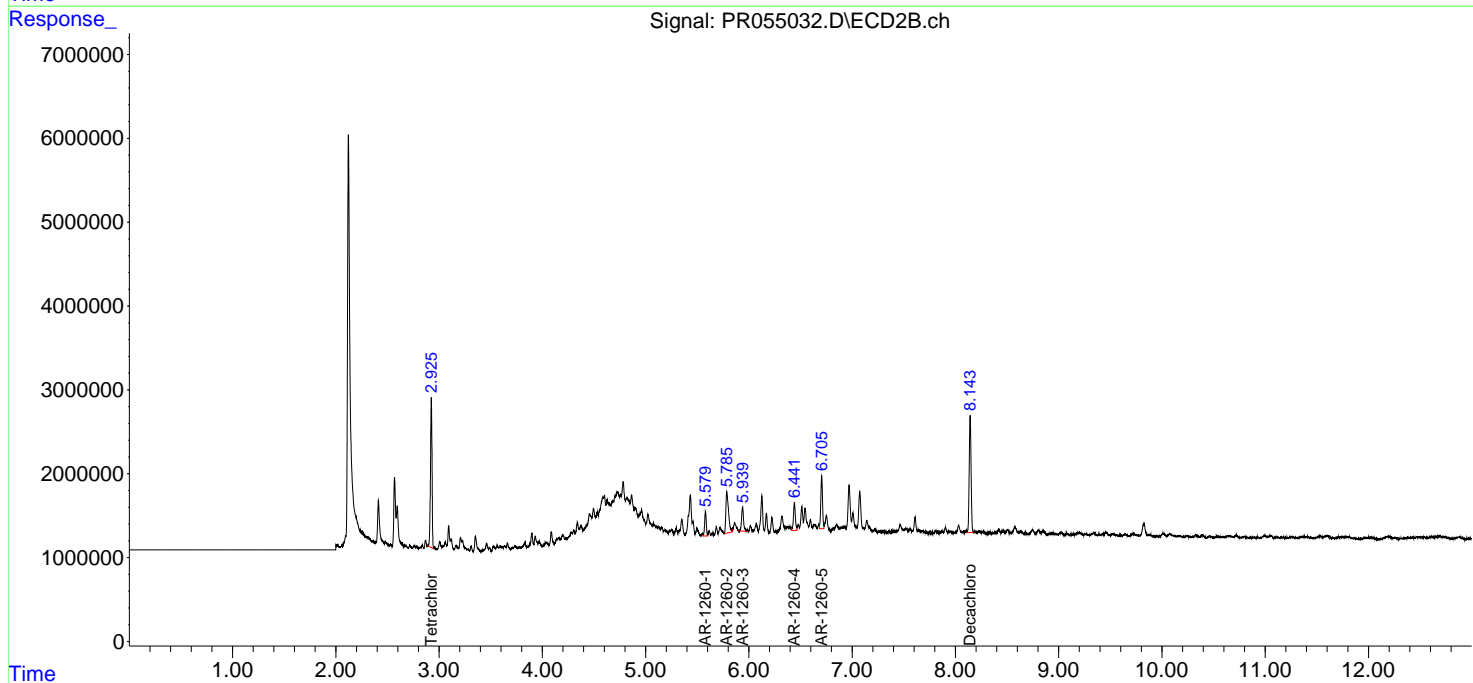
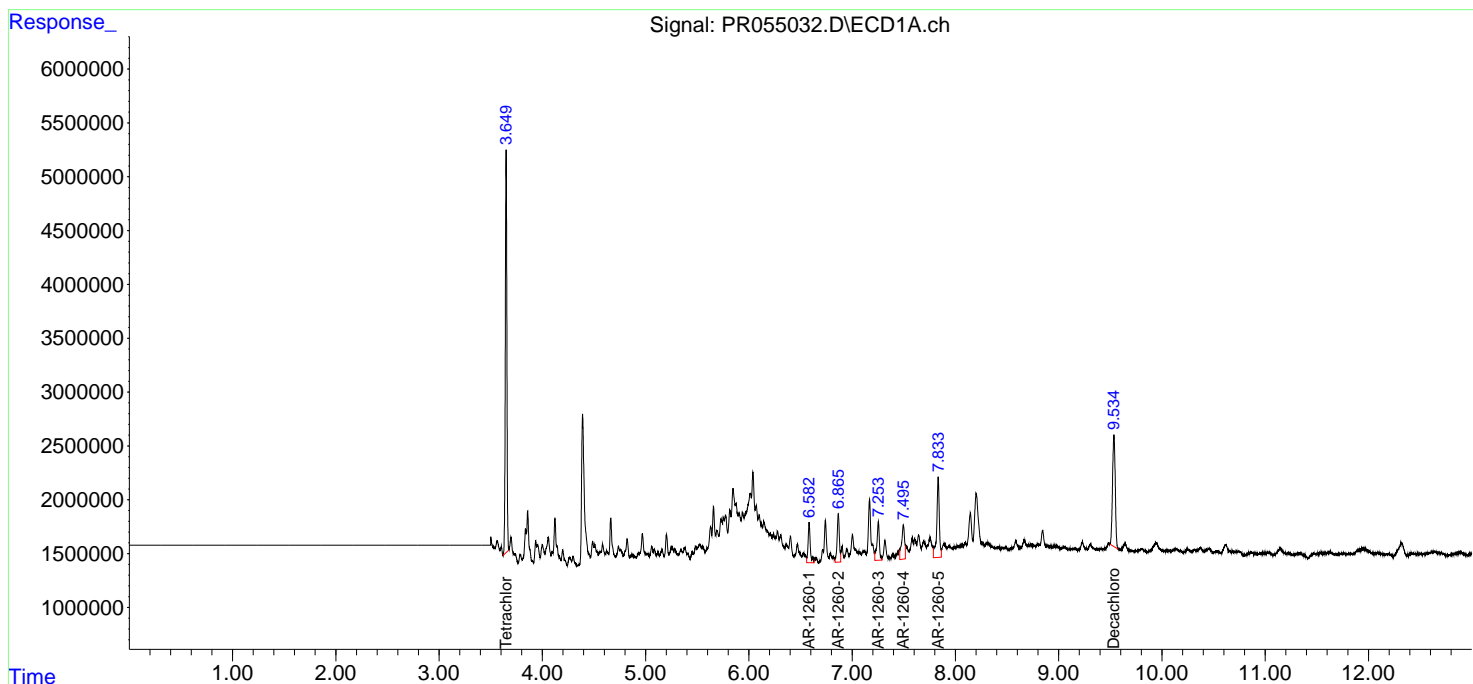
Instrument :
 ECD_R
 ClientSampleId :
 20071

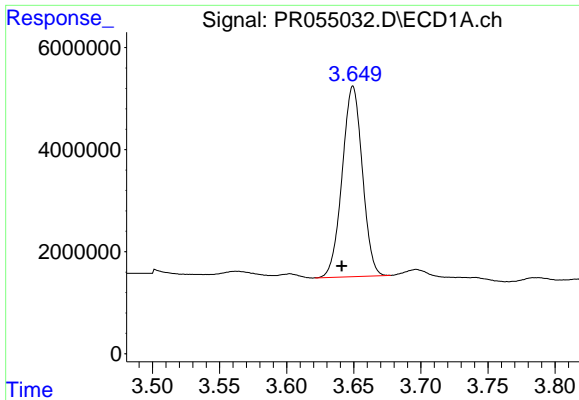
Manual Integrations
 APPROVED

Reviewed By :Yogesh Patel 06/28/2022
 Supervised By :Ankita Jodhani 06/28/2022

Integration File signal 1: autoint1.e
 Integration File signal 2: autoint2.e
 Quant Time: Jun 28 06:40:46 2022
 Quant Method : Z:\pestpcbsrv\HPCHEM1\ECD_R\Method\PR062722.M
 Quant Title : GC EXTRACTABLES
 QLast Update : Mon Jun 27 17:05:06 2022
 Response via : Initial Calibration
 Integrator: ChemStation

Volume Inj. : 2 µl
 Signal #1 Phase : ZB-MR1 Signal #2 Phase: ZB-MR2
 Signal #1 Info : 30Mx0.32mmx 0.50µ Signal #2 Info : 30M x 0.32mm x 0.25µm





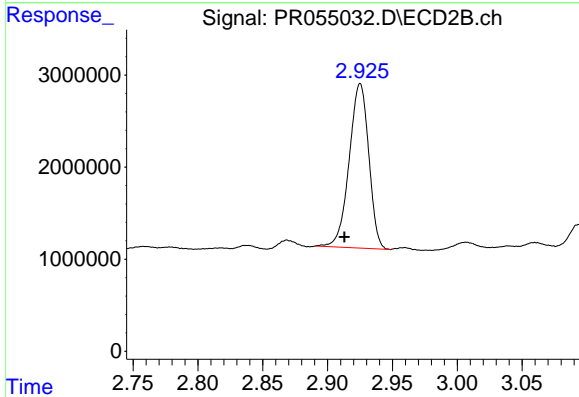
#1 Tetrachloro-m-xylene

R.T.: 3.649 min
 Delta R.T.: 0.008 min
 Response: 39121151
 Conc: 10.76 ng/ml

Instrument :
 ECD_R
 ClientSampleId :
 20071

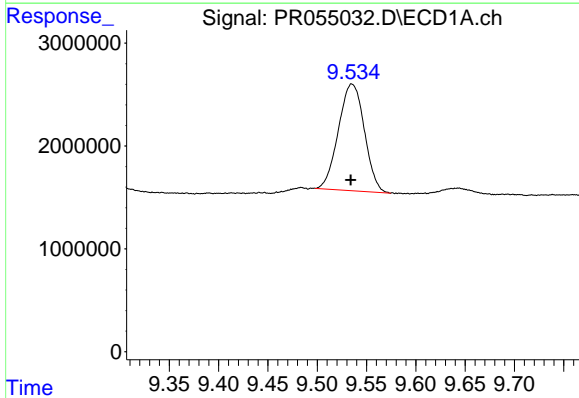
Manual Integrations
 APPROVED

Reviewed By :Yogesh Patel 06/28/2022
 Supervised By :Ankita Jodhani 06/28/2022



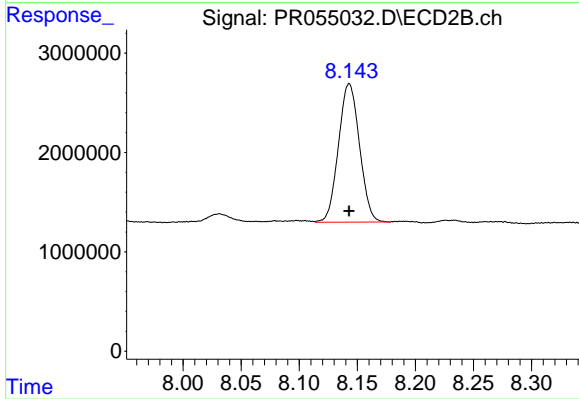
#1 Tetrachloro-m-xylene

R.T.: 2.925 min
 Delta R.T.: 0.012 min
 Response: 18806477
 Conc: 11.27 ng/ml



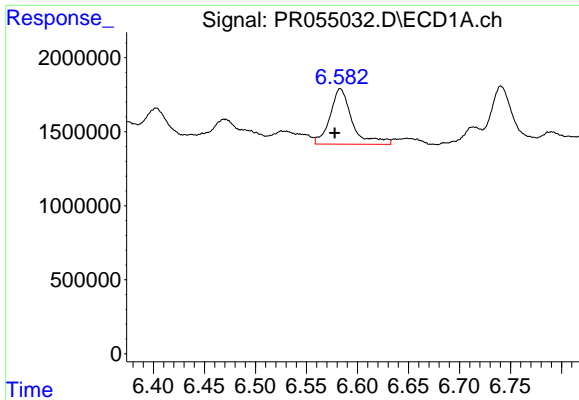
#2 Decachlorobiphenyl

R.T.: 9.534 min
 Delta R.T.: 0.000 min
 Response: 19012963
 Conc: 13.19 ng/ml m



#2 Decachlorobiphenyl

R.T.: 8.143 min
 Delta R.T.: 0.000 min
 Response: 17556963
 Conc: 12.50 ng/ml



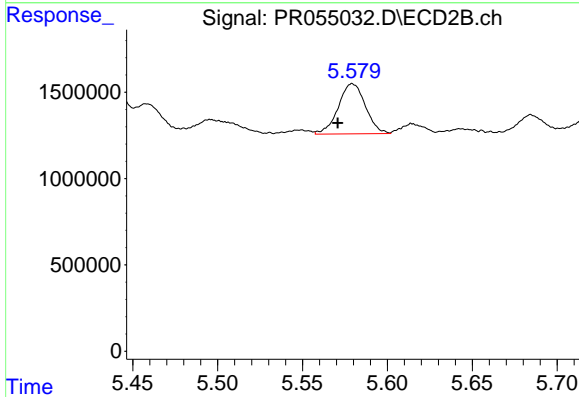
#31 AR-1260-1

R.T.: 6.583 min
 Delta R.T.: 0.006 min
 Response: 5666022
 Conc: 65.07 ng/ml

Instrument :
 ECD_R
 ClientSampleId :
 20071

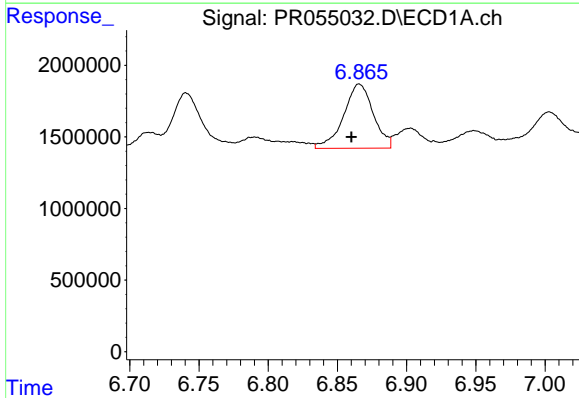
Manual Integrations
 APPROVED

Reviewed By :Yogesh Patel 06/28/2022
 Supervised By :Ankita Jodhani 06/28/2022



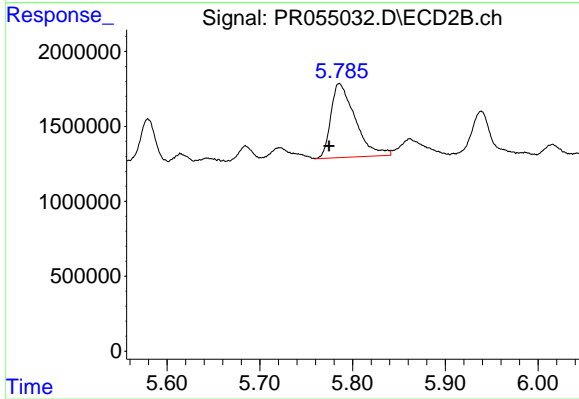
#31 AR-1260-1

R.T.: 5.579 min
 Delta R.T.: 0.009 min
 Response: 3232011
 Conc: 40.89 ng/ml



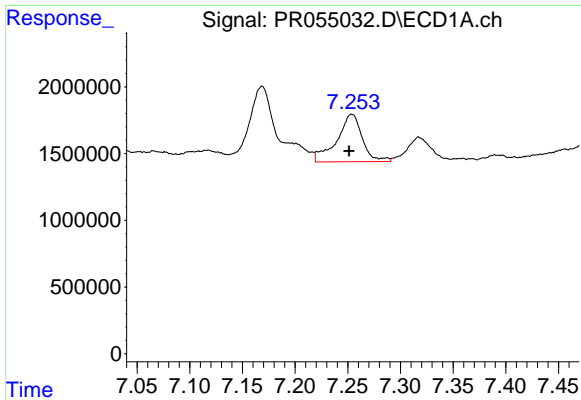
#32 AR-1260-2

R.T.: 6.866 min
 Delta R.T.: 0.006 min
 Response: 6699577
 Conc: 66.88 ng/ml



#32 AR-1260-2

R.T.: 5.786 min
 Delta R.T.: 0.011 min
 Response: 8988837
 Conc: 95.38 ng/ml



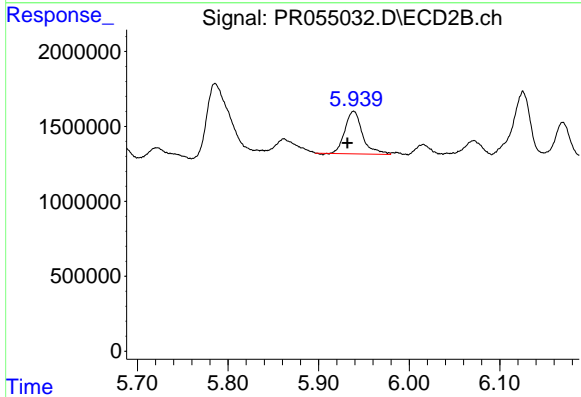
#33 AR-1260-3

R.T.: 7.254 min
 Delta R.T.: 0.003 min
 Response: 5998145
 Conc: 89.37 ng/ml

Instrument : ECD_R
 ClientSampleId : 20071

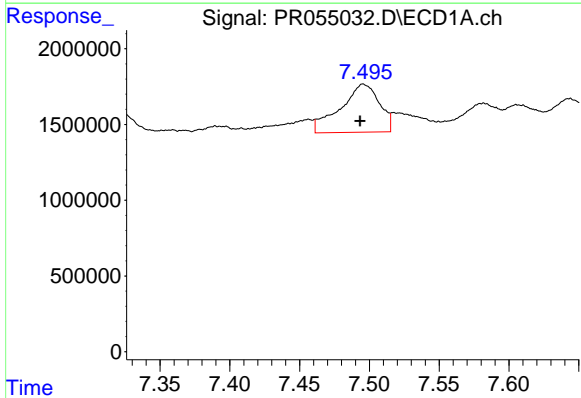
Manual Integrations
 APPROVED

Reviewed By :Yogesh Patel 06/28/2022
 Supervised By :Ankita Jodhani 06/28/2022



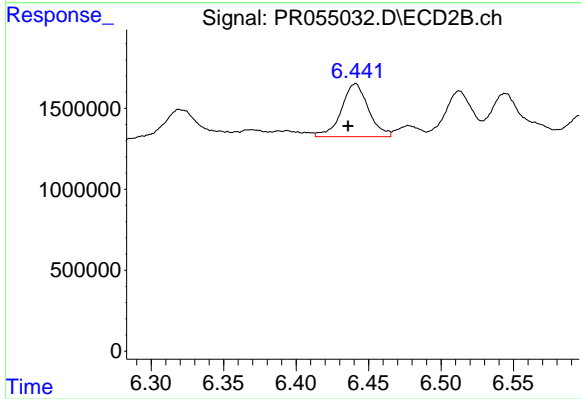
#33 AR-1260-3

R.T.: 5.939 min
 Delta R.T.: 0.007 min
 Response: 3840838
 Conc: 43.01 ng/ml



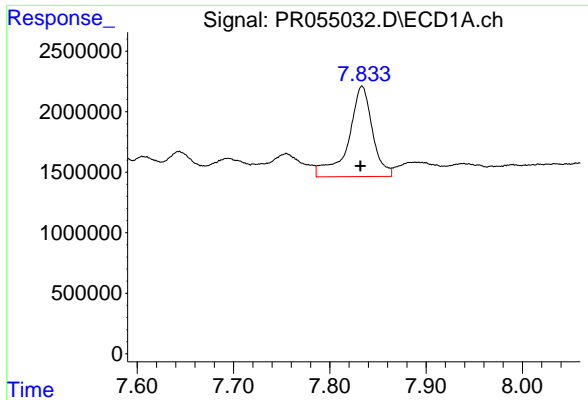
#34 AR-1260-4

R.T.: 7.495 min
 Delta R.T.: 0.002 min
 Response: 6182884
 Conc: 76.84 ng/ml m



#34 AR-1260-4

R.T.: 6.441 min
 Delta R.T.: 0.005 min
 Response: 4259484
 Conc: 61.88 ng/ml m



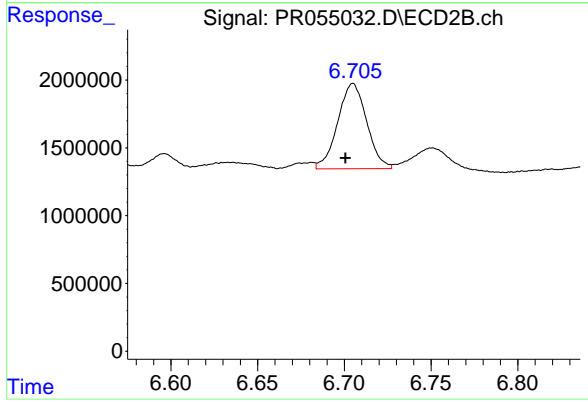
#35 AR-1260-5

R.T.: 7.833 min
 Delta R.T.: 0.002 min
 Response: 12906581
 Conc: 84.26 ng/ml

Instrument :
 ECD_R
 ClientSampleId :
 20071

Manual Integrations
 APPROVED

Reviewed By :Yogesh Patel 06/28/2022
 Supervised By :Ankita Jodhani 06/28/2022



#35 AR-1260-5

R.T.: 6.705 min
 Delta R.T.: 0.004 min
 Response: 7313351
 Conc: 44.58 ng/ml m