

Data Path : Z:\pestpcbsrv\HPCHEM1\ECD_R\Data\PR063022\
 Data File : PR055092.D
 Signal(s) : Signal #1: ECD1A.ch Signal #2: ECD2B.ch
 Acq On : 29 Jun 2022 16:59
 Operator : AJ\MA
 Sample : AR1660CCC500
 Misc :
 ALS Vial : 3 Sample Multiplier: 1

Instrument :
 ECD_R
ClientSampleId :
 AR1660CCC500

Integration File signal 1: autoint1.e
 Integration File signal 2: autoint2.e
 Quant Time: Jun 30 03:11:44 2022
 Quant Method : Z:\pestpcbsrv\HPCHEM1\ECD_R\Method\PR062722.M
 Quant Title : GC EXTRACTABLES
 QLast Update : Mon Jun 27 17:05:06 2022
 Response via : Initial Calibration
 Integrator: ChemStation

Volume Inj. : 2 µl
 Signal #1 Phase : ZB-MR2 Signal #2 Phase: ZB-MR2
 Signal #1 Info : 30Mx0.32mmx 0.50µ Signal #2 Info : 30M x 0.32mm x 0.25µm

Compound	RT#1	RT#2	Resp#1	Resp#2	ng/ml	ng/ml

System Monitoring Compounds						
1) SA Tetrachlo...	3.647	2.910	192.9E6	90232895	53.046	54.051
2) SA Decachlor...	9.544	8.142	69939620	68409963	48.505	48.690
Target Compounds						
3) L1 AR-1016-1	4.869	4.022	50860356	30720040	497.216	535.790
4) L1 AR-1016-2	4.891	4.040	70146481	42186084	483.710	540.059
5) L1 AR-1016-3	4.955	4.217	41345820	23062246	473.392	542.011
6) L1 AR-1016-4	5.057	4.268	35154255	17747147	484.628	537.029
7) L1 AR-1016-5	5.373	4.484	31479946	22991858	488.090	544.225
31) L7 AR-1260-1	6.585	5.569	41449185	40541397	476.029	512.961
32) L7 AR-1260-2	6.867	5.773	47310844	48970575	472.272	519.620
33) L7 AR-1260-3	7.258	5.930	31864894	46878343	474.765	525.000
34) L7 AR-1260-4	7.500	6.434	39689501	35240684	493.283	511.976
35) L7 AR-1260-5	7.838	6.699	72737668	84338510	474.870	514.082

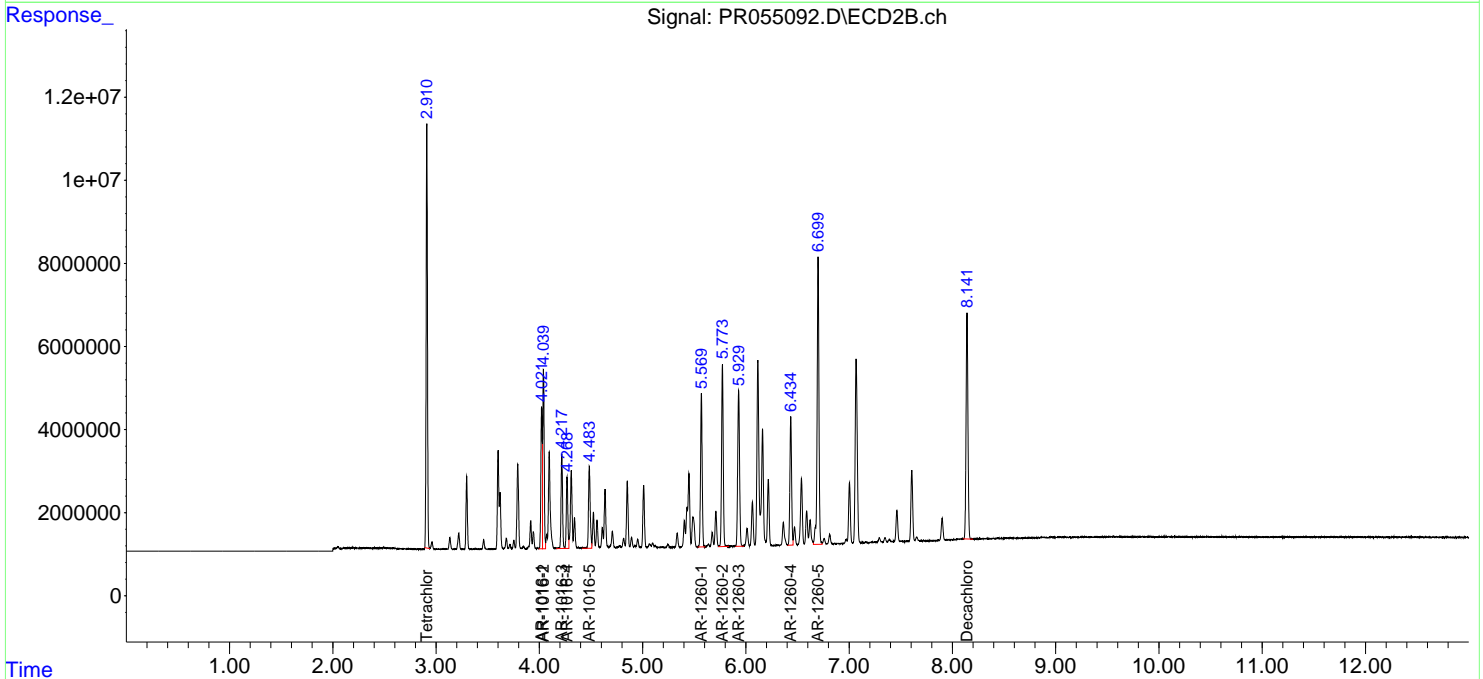
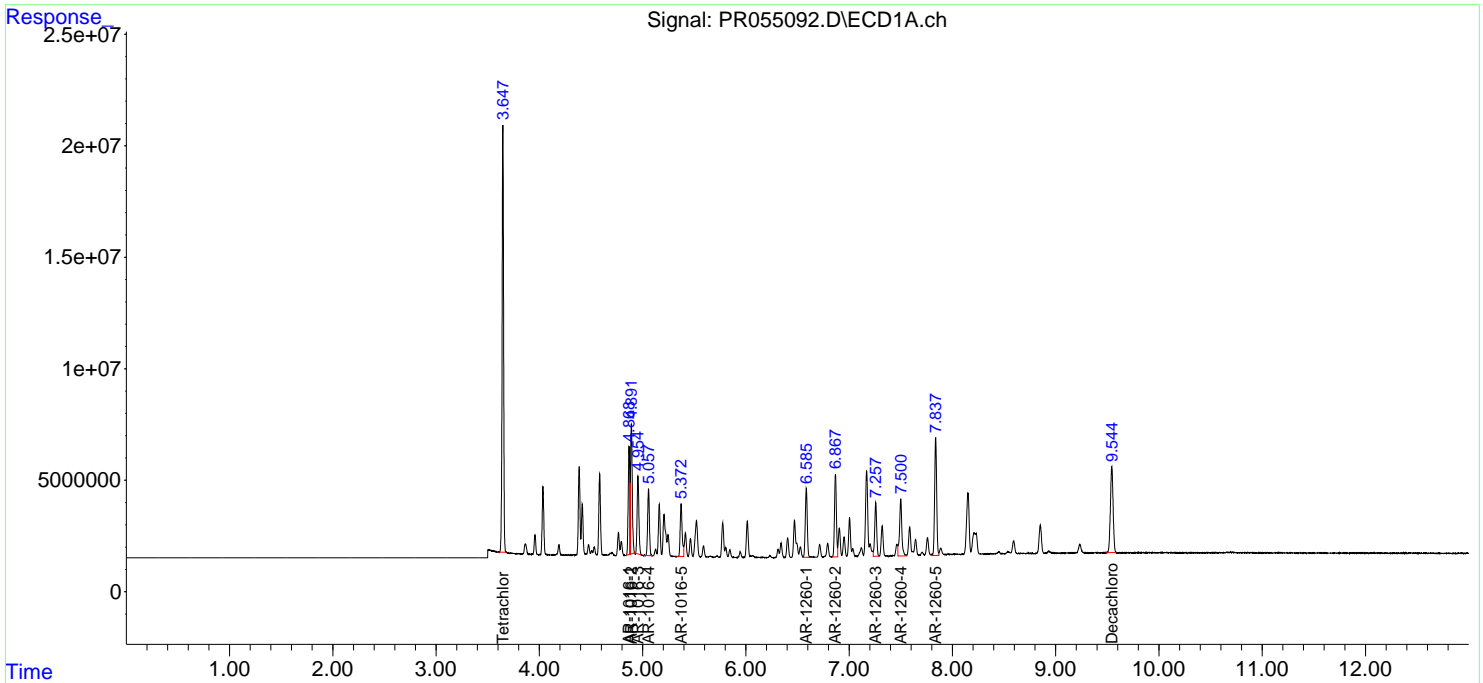
(f)=RT Delta > 1/2 Window (#)=Amounts differ by > 25% (m)=manual int.

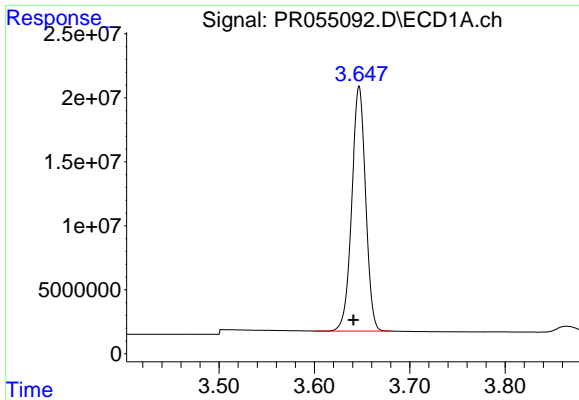
Data Path : Z:\pestpcbsrv\HPCHEM1\ECD_R\Data\PR063022\
 Data File : PR055092.D
 Signal(s) : Signal #1: ECD1A.ch Signal #2: ECD2B.ch
 Acq On : 29 Jun 2022 16:59
 Operator : AJ\MA
 Sample : AR1660CCC500
 Misc :
 ALS Vial : 3 Sample Multiplier: 1

Instrument :
 ECD_R
 ClientSampleId :
 AR1660CCC500

Integration File signal 1: autoint1.e
 Integration File signal 2: autoint2.e
 Quant Time: Jun 30 03:11:44 2022
 Quant Method : Z:\pestpcbsrv\HPCHEM1\ECD_R\Method\PR062722.M
 Quant Title : GC EXTRACTABLES
 QLast Update : Mon Jun 27 17:05:06 2022
 Response via : Initial Calibration
 Integrator: ChemStation

Volume Inj. : 2 µl
 Signal #1 Phase : ZB-MR1 Signal #2 Phase: ZB-MR2
 Signal #1 Info : 30Mx0.32mmx 0.50µ Signal #2 Info : 30M x 0.32mm x 0.25µm

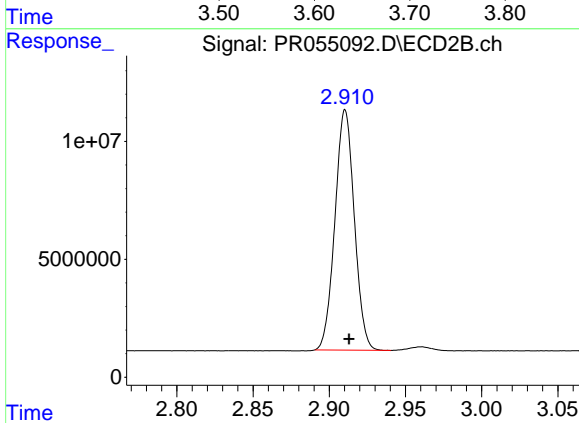




#1 Tetrachloro-m-xylene

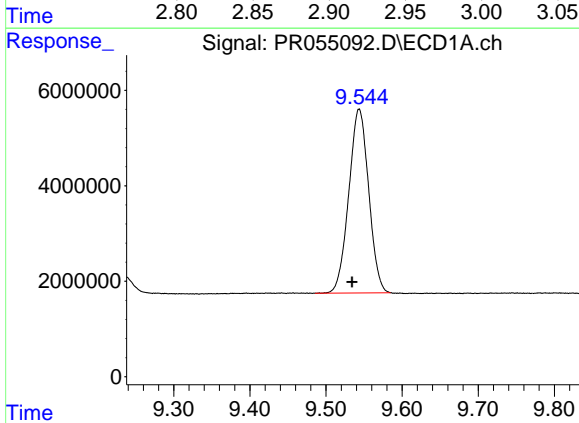
R.T.: 3.647 min
 Delta R.T.: 0.006 min
 Response: 192946361
 Conc: 53.05 ng/ml

Instrument :
 ECD_R
 ClientSampleId :
 AR1660CCC500



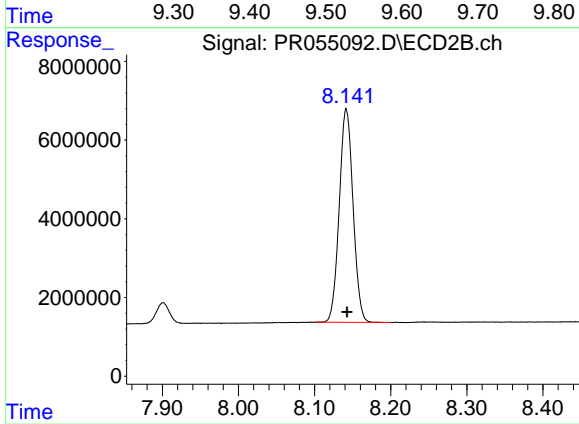
#1 Tetrachloro-m-xylene

R.T.: 2.910 min
 Delta R.T.: -0.003 min
 Response: 90232895
 Conc: 54.05 ng/ml



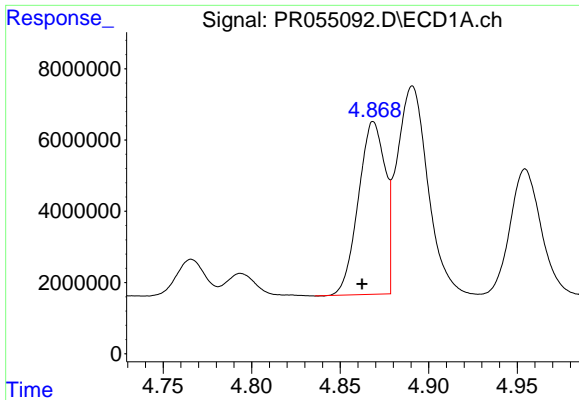
#2 Decachlorobiphenyl

R.T.: 9.544 min
 Delta R.T.: 0.009 min
 Response: 69939620
 Conc: 48.50 ng/ml



#2 Decachlorobiphenyl

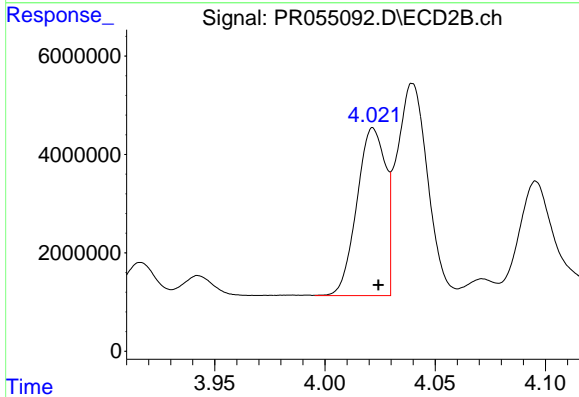
R.T.: 8.142 min
 Delta R.T.: -0.001 min
 Response: 68409963
 Conc: 48.69 ng/ml



#3 AR-1016-1

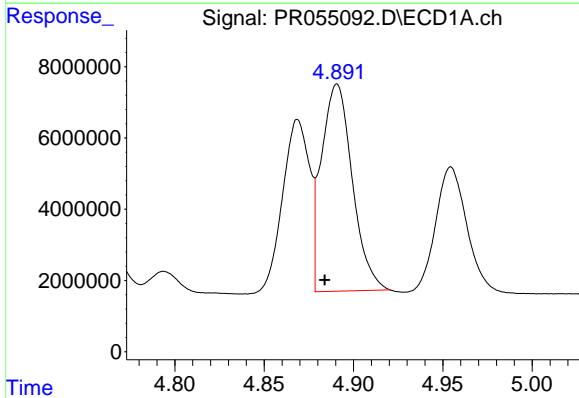
R.T.: 4.869 min
 Delta R.T.: 0.007 min
 Response: 50860356
 Conc: 497.22 ng/ml

Instrument :
 ECD_R
 ClientSampleId :
 AR1660CCC500



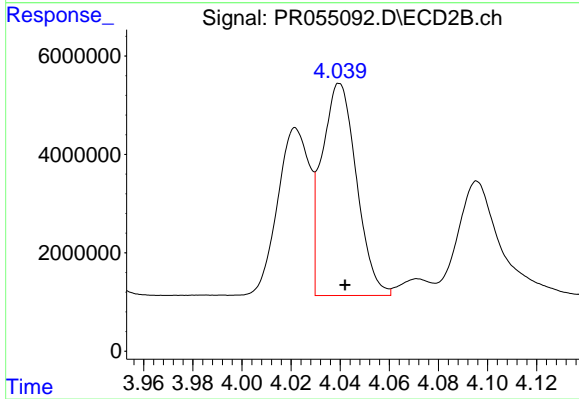
#3 AR-1016-1

R.T.: 4.022 min
 Delta R.T.: -0.002 min
 Response: 30720040
 Conc: 535.79 ng/ml



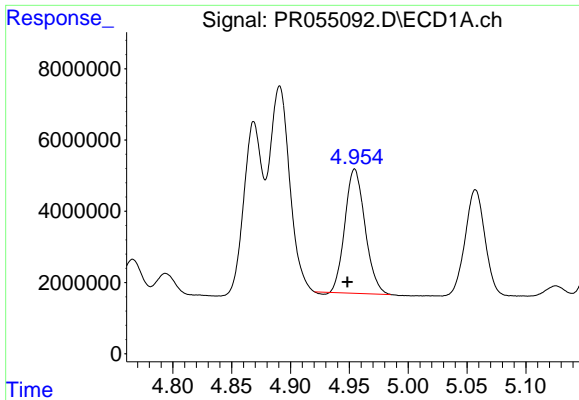
#4 AR-1016-2

R.T.: 4.891 min
 Delta R.T.: 0.007 min
 Response: 70146481
 Conc: 483.71 ng/ml



#4 AR-1016-2

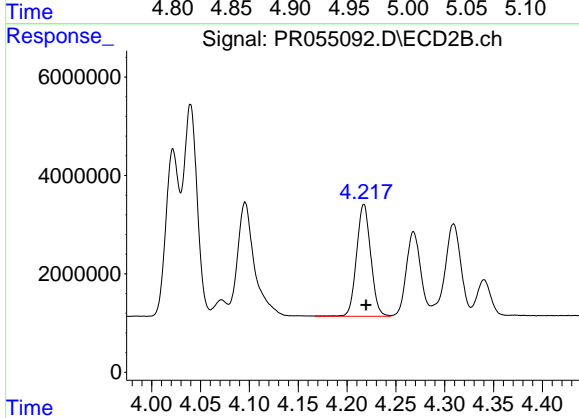
R.T.: 4.040 min
 Delta R.T.: -0.002 min
 Response: 42186084
 Conc: 540.06 ng/ml



#5 AR-1016-3

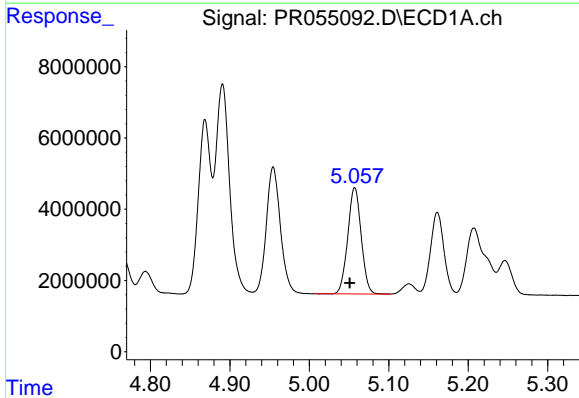
R.T.: 4.955 min
 Delta R.T.: 0.006 min
 Response: 41345820
 Conc: 473.39 ng/ml

Instrument :
 ECD_R
 ClientSampleId :
 AR1660CCC500



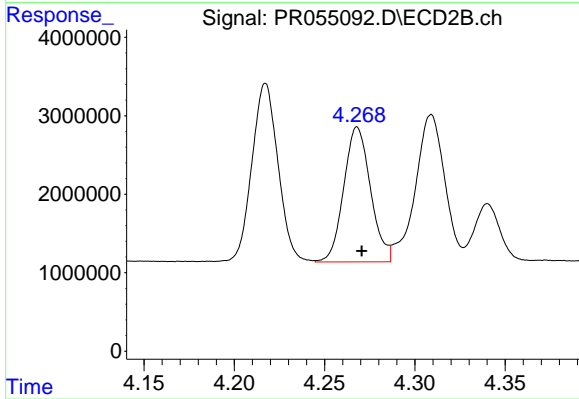
#5 AR-1016-3

R.T.: 4.217 min
 Delta R.T.: -0.002 min
 Response: 23062246
 Conc: 542.01 ng/ml



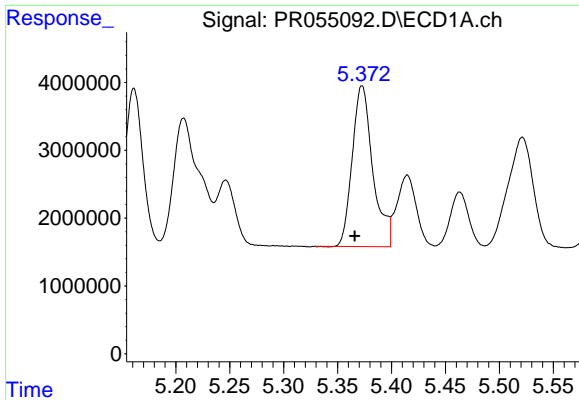
#6 AR-1016-4

R.T.: 5.057 min
 Delta R.T.: 0.006 min
 Response: 35154255
 Conc: 484.63 ng/ml



#6 AR-1016-4

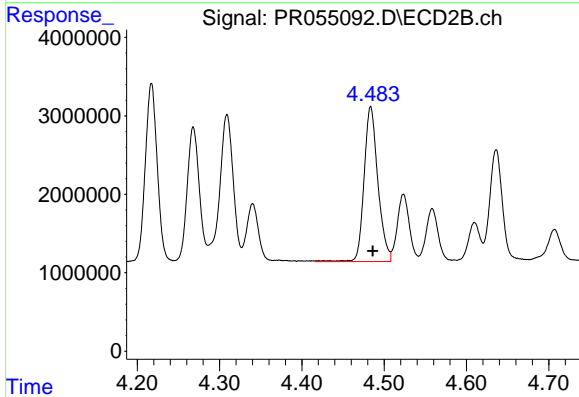
R.T.: 4.268 min
 Delta R.T.: -0.003 min
 Response: 17747147
 Conc: 537.03 ng/ml



#7 AR-1016-5

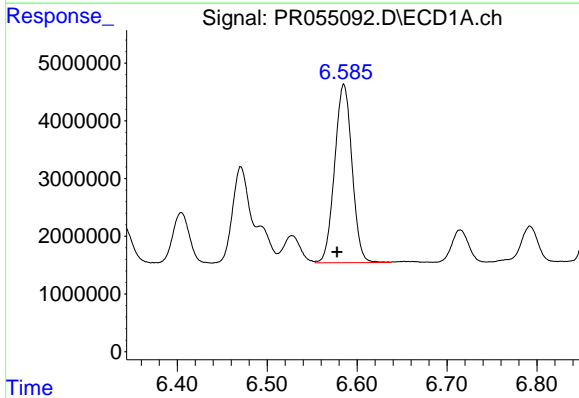
R.T.: 5.373 min
 Delta R.T.: 0.007 min
 Response: 31479946
 Conc: 488.09 ng/ml

Instrument :
 ECD_R
 ClientSampleId :
 AR1660CCC500



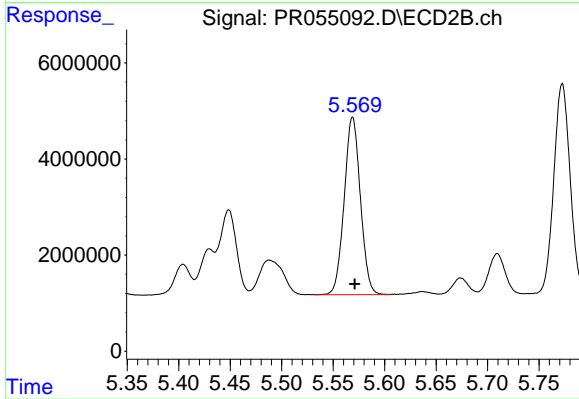
#7 AR-1016-5

R.T.: 4.484 min
 Delta R.T.: -0.002 min
 Response: 22991858
 Conc: 544.23 ng/ml



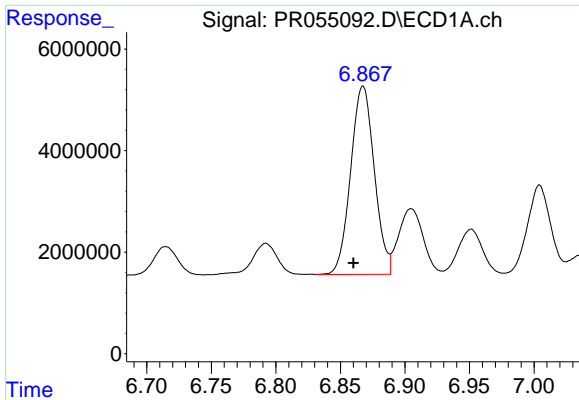
#31 AR-1260-1

R.T.: 6.585 min
 Delta R.T.: 0.007 min
 Response: 41449185
 Conc: 476.03 ng/ml



#31 AR-1260-1

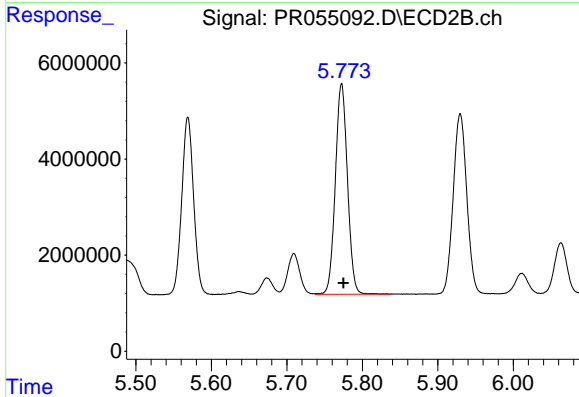
R.T.: 5.569 min
 Delta R.T.: -0.002 min
 Response: 40541397
 Conc: 512.96 ng/ml



#32 AR-1260-2

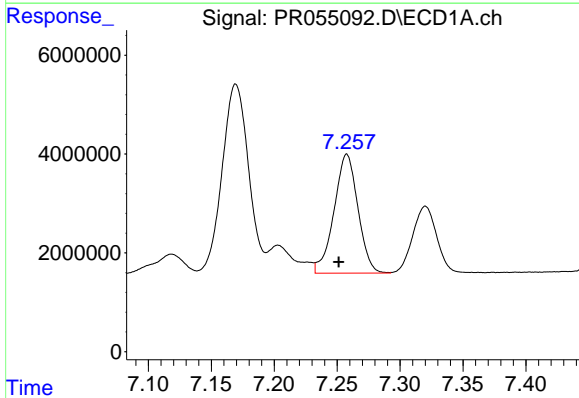
R.T.: 6.867 min
Delta R.T.: 0.007 min
Response: 47310844
Conc: 472.27 ng/ml

Instrument :
ECD_R
ClientSampleId :
AR1660CCC500



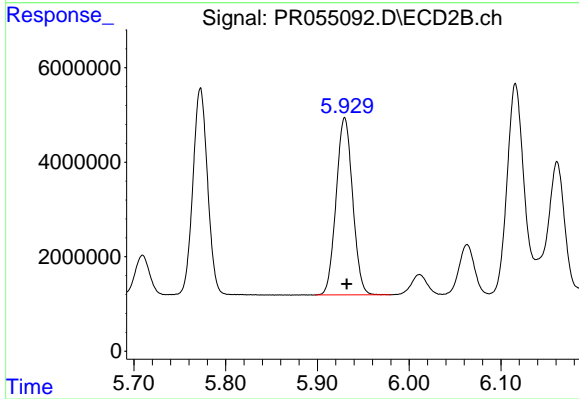
#32 AR-1260-2

R.T.: 5.773 min
Delta R.T.: -0.002 min
Response: 48970575
Conc: 519.62 ng/ml



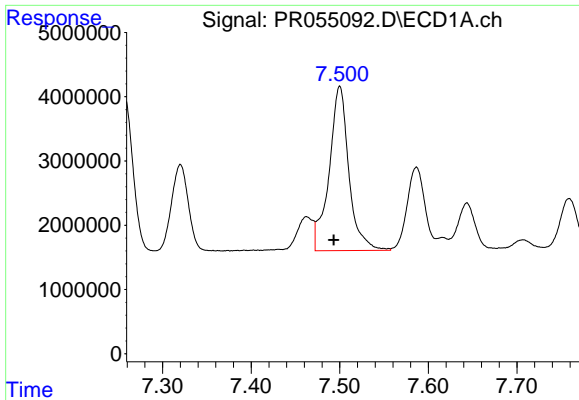
#33 AR-1260-3

R.T.: 7.258 min
Delta R.T.: 0.006 min
Response: 31864894
Conc: 474.77 ng/ml



#33 AR-1260-3

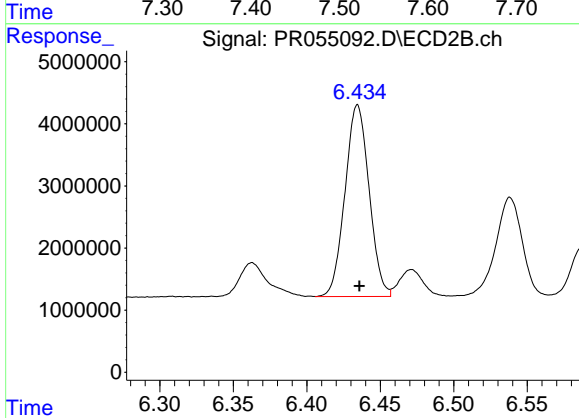
R.T.: 5.930 min
Delta R.T.: -0.002 min
Response: 46878343
Conc: 525.00 ng/ml



#34 AR-1260-4

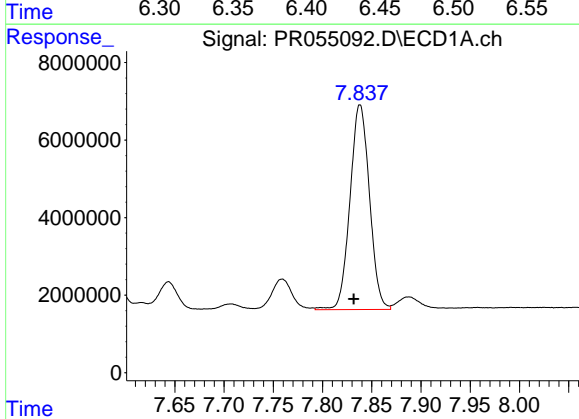
R.T.: 7.500 min
 Delta R.T.: 0.007 min
 Response: 39689501
 Conc: 493.28 ng/ml

Instrument :
 ECD_R
 ClientSampleId :
 AR1660CCC500



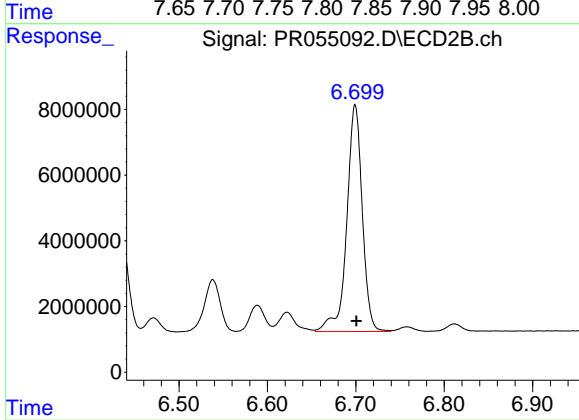
#34 AR-1260-4

R.T.: 6.434 min
 Delta R.T.: -0.001 min
 Response: 35240684
 Conc: 511.98 ng/ml



#35 AR-1260-5

R.T.: 7.838 min
 Delta R.T.: 0.006 min
 Response: 72737668
 Conc: 474.87 ng/ml



#35 AR-1260-5

R.T.: 6.699 min
 Delta R.T.: -0.001 min
 Response: 84338510
 Conc: 514.08 ng/ml