

Data Path : Z:\pestpcbsrv\HPCHEM1\ECD_R\Data\PR063022\
 Data File : PR055103.D
 Signal(s) : Signal #1: ECD1A.ch Signal #2: ECD2B.ch
 Acq On : 29 Jun 2022 20:08
 Operator : AJ\MA
 Sample : AR1660CCC500
 Misc :
 ALS Vial : 3 Sample Multiplier: 1

Instrument :
 ECD_R
 ClientSampleId :
 AR1660CCC500

Integration File signal 1: autoint1.e
 Integration File signal 2: autoint2.e
 Quant Time: Jun 30 03:17:59 2022
 Quant Method : Z:\pestpcbsrv\HPCHEM1\ECD_R\Method\PR062722.M
 Quant Title : GC EXTRACTABLES
 QLast Update : Mon Jun 27 17:05:06 2022
 Response via : Initial Calibration
 Integrator: ChemStation

Volume Inj. : 2 µl
 Signal #1 Phase : ZB-MR2 Signal #2 Phase: ZB-MR2
 Signal #1 Info : 30Mx0.32mmx 0.50µ Signal #2 Info : 30M x 0.32mm x 0.25µm

Compound	RT#1	RT#2	Resp#1	Resp#2	ng/ml	ng/ml

System Monitoring Compounds						
1) SA Tetrachlo...	3.640	2.912	207.8E6	96050781	57.133	57.536
2) SA Decachlor...	9.533	8.139	76919805	78283916	53.345	55.717
Target Compounds						
3) L1 AR-1016-1	4.862	4.023	57563971	32363607	562.752	564.455
4) L1 AR-1016-2	4.883	4.041	80315424	44601610	553.832	570.982
5) L1 AR-1016-3	4.948	4.218	48273602	24153277	552.712	567.652
6) L1 AR-1016-4	5.050	4.269	39485183	18790201	544.333	568.592
7) L1 AR-1016-5	5.365	4.485	35660238	24013121	552.904	568.399
31) L7 AR-1260-1	6.576	5.569	46072163	44622067	529.122	564.592
32) L7 AR-1260-2	6.859	5.773	53362194	54105420	532.679	574.105
33) L7 AR-1260-3	7.249	5.929	36115066	52394044	538.090	586.771
34) L7 AR-1260-4	7.492	6.433	44617508	40009301	554.531m	581.254
35) L7 AR-1260-5	7.830	6.698	78632681	97457617	513.356	594.049

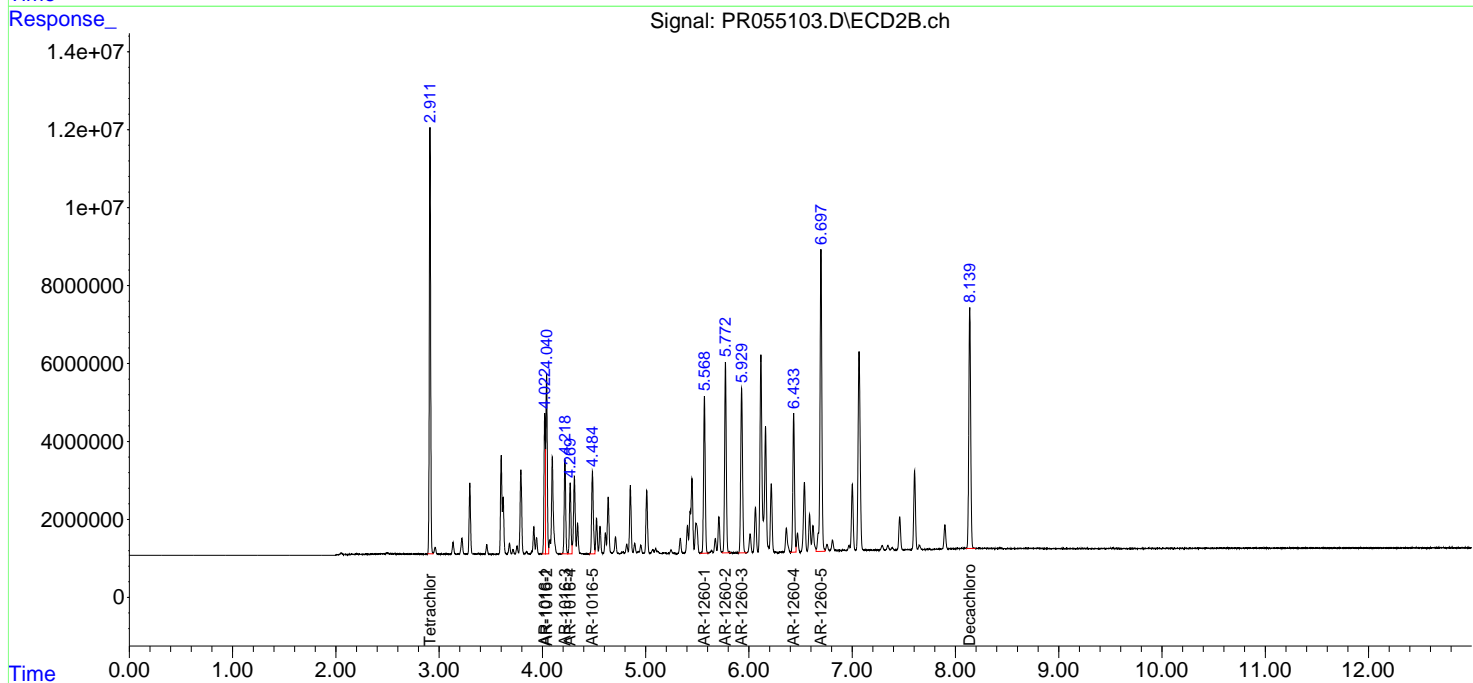
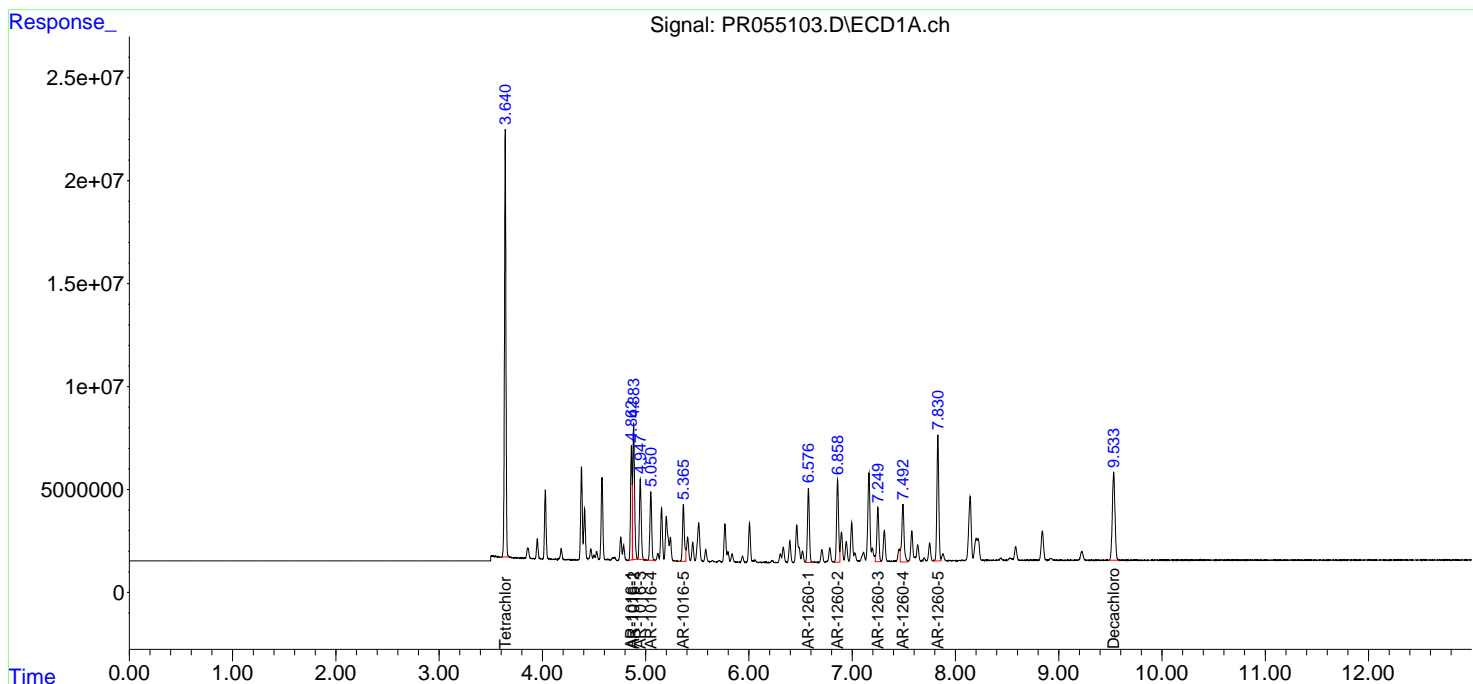
(f)=RT Delta > 1/2 Window (#)=Amounts differ by > 25% (m)=manual int.

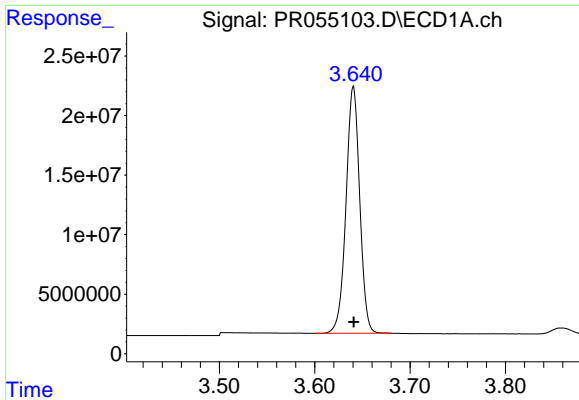
Data Path : Z:\pestpcbsrv\HPCHEM1\ECD_R\Data\PR063022\
 Data File : PR055103.D
 Signal(s) : Signal #1: ECD1A.ch Signal #2: ECD2B.ch
 Acq On : 29 Jun 2022 20:08
 Operator : AJ\MA
 Sample : AR1660CCC500
 Misc :
 ALS Vial : 3 Sample Multiplier: 1

Instrument :
 ECD_R
 ClientSampleId :
 AR1660CCC500

Integration File signal 1: autoint1.e
 Integration File signal 2: autoint2.e
 Quant Time: Jun 30 03:17:59 2022
 Quant Method : Z:\pestpcbsrv\HPCHEM1\ECD_R\Method\PR062722.M
 Quant Title : GC EXTRACTABLES
 QLast Update : Mon Jun 27 17:05:06 2022
 Response via : Initial Calibration
 Integrator: ChemStation

Volume Inj. : 2 µl
 Signal #1 Phase : ZB-MR1 Signal #2 Phase: ZB-MR2
 Signal #1 Info : 30Mx0.32mmx 0.50µ Signal #2 Info : 30M x 0.32mm x 0.25µm

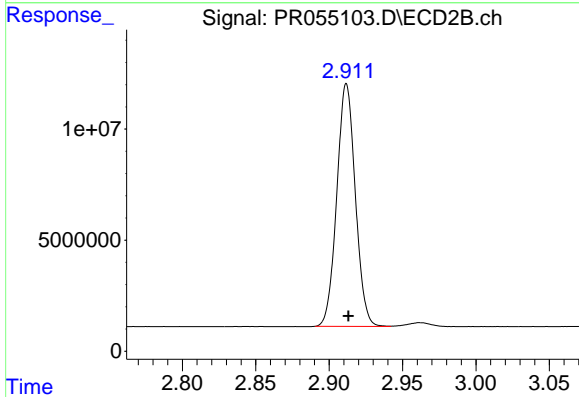




#1 Tetrachloro-m-xylene

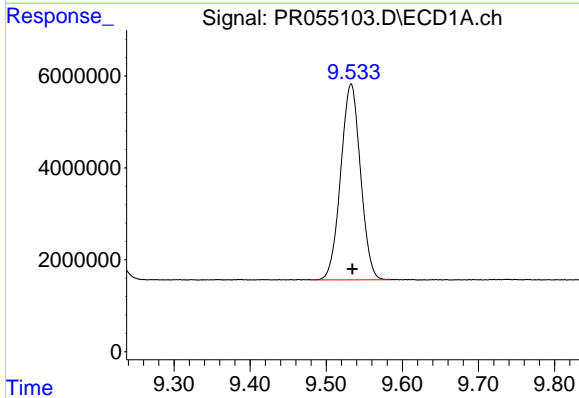
R.T.: 3.640 min
 Delta R.T.: 0.000 min
 Response: 207809836
 Conc: 57.13 ng/ml

Instrument :
 ECD_R
 ClientSampleId :
 AR1660CCC500



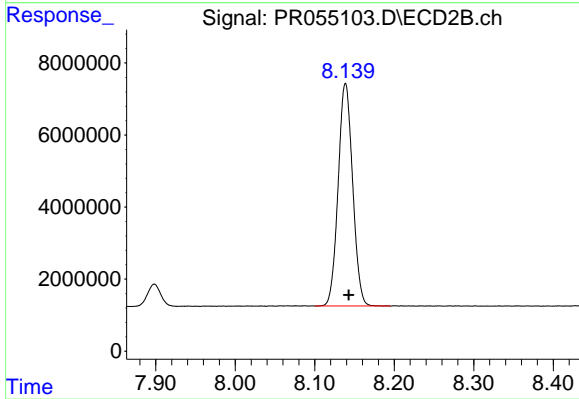
#1 Tetrachloro-m-xylene

R.T.: 2.912 min
 Delta R.T.: -0.001 min
 Response: 96050781
 Conc: 57.54 ng/ml



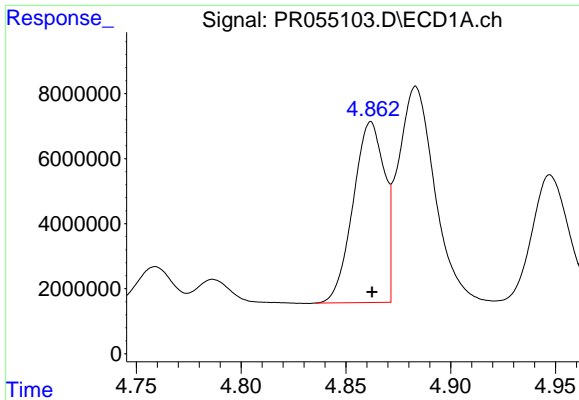
#2 Decachlorobiphenyl

R.T.: 9.533 min
 Delta R.T.: -0.002 min
 Response: 76919805
 Conc: 53.35 ng/ml



#2 Decachlorobiphenyl

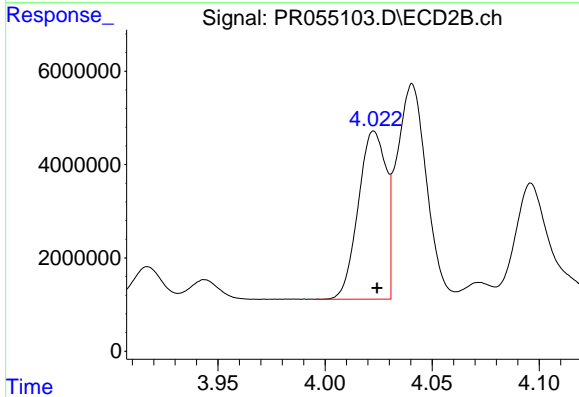
R.T.: 8.139 min
 Delta R.T.: -0.004 min
 Response: 78283916
 Conc: 55.72 ng/ml



#3 AR-1016-1

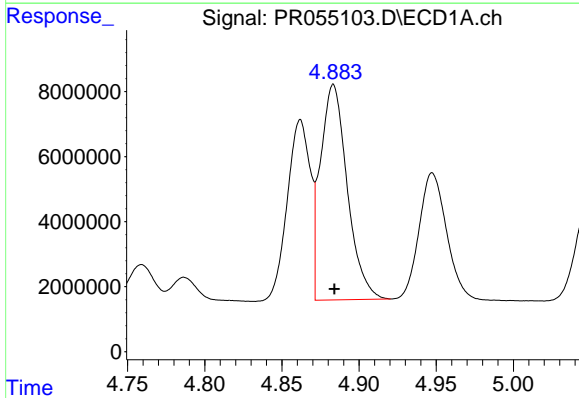
R.T.: 4.862 min
 Delta R.T.: 0.000 min
 Response: 57563971
 Conc: 562.75 ng/ml

Instrument :
 ECD_R
 ClientSampleId :
 AR1660CCC500



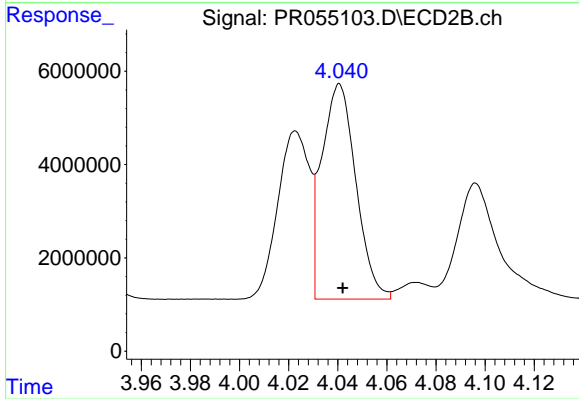
#3 AR-1016-1

R.T.: 4.023 min
 Delta R.T.: -0.001 min
 Response: 32363607
 Conc: 564.46 ng/ml



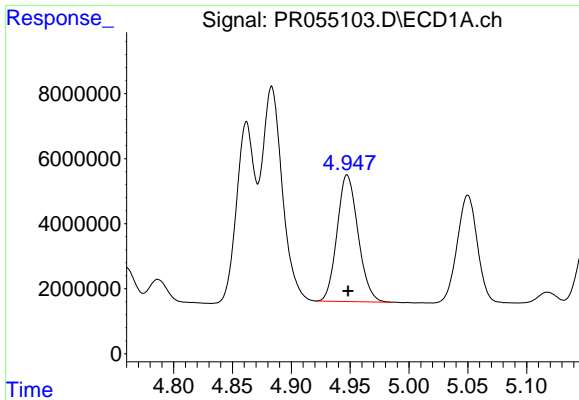
#4 AR-1016-2

R.T.: 4.883 min
 Delta R.T.: 0.000 min
 Response: 80315424
 Conc: 553.83 ng/ml



#4 AR-1016-2

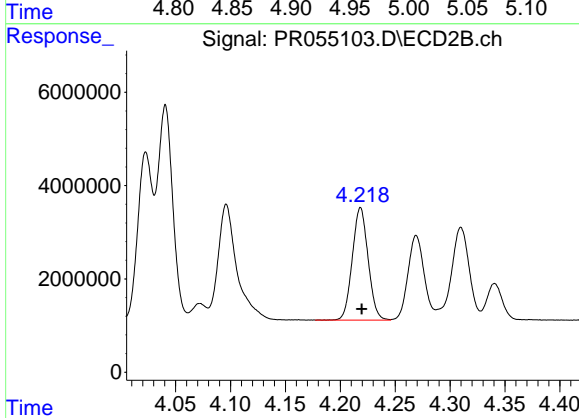
R.T.: 4.041 min
 Delta R.T.: -0.001 min
 Response: 44601610
 Conc: 570.98 ng/ml



#5 AR-1016-3

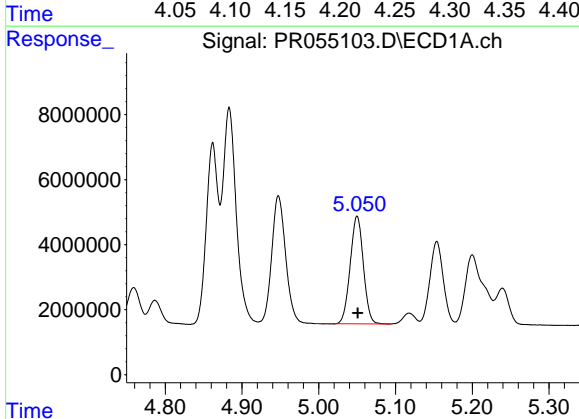
R.T.: 4.948 min
 Delta R.T.: 0.000 min
 Response: 48273602
 Conc: 552.71 ng/ml

Instrument :
 ECD_R
 ClientSampleId :
 AR1660CCC500



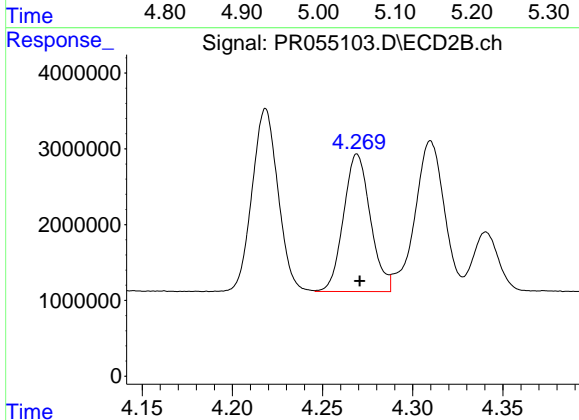
#5 AR-1016-3

R.T.: 4.218 min
 Delta R.T.: -0.001 min
 Response: 24153277
 Conc: 567.65 ng/ml



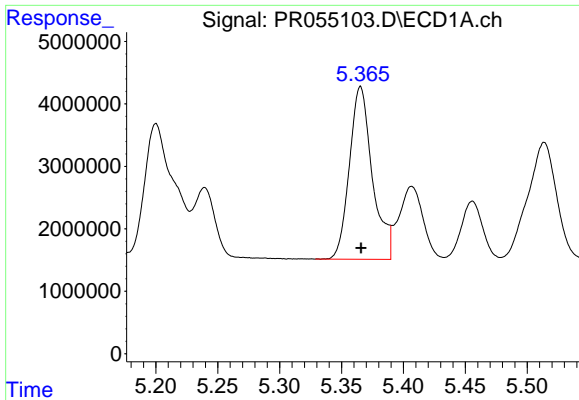
#6 AR-1016-4

R.T.: 5.050 min
 Delta R.T.: 0.000 min
 Response: 39485183
 Conc: 544.33 ng/ml



#6 AR-1016-4

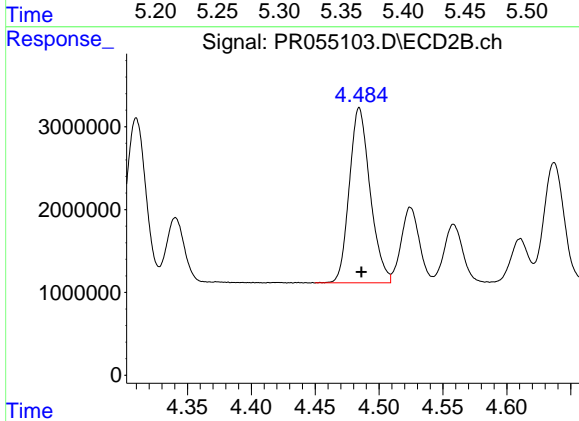
R.T.: 4.269 min
 Delta R.T.: -0.001 min
 Response: 18790201
 Conc: 568.59 ng/ml



#7 AR-1016-5

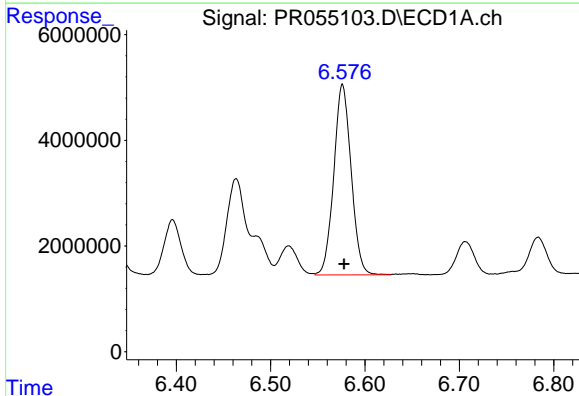
R.T.: 5.365 min
 Delta R.T.: 0.000 min
 Response: 35660238
 Conc: 552.90 ng/ml

Instrument :
 ECD_R
 ClientSampleId :
 AR1660CCC500



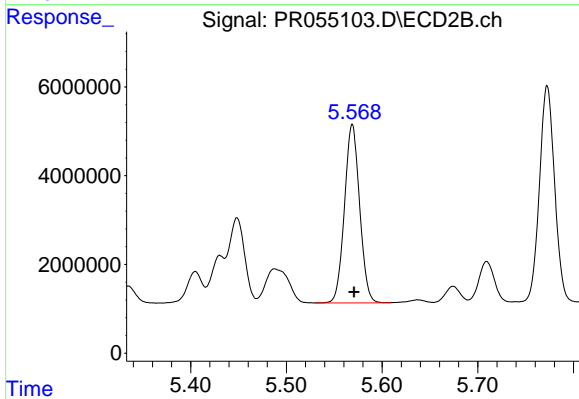
#7 AR-1016-5

R.T.: 4.485 min
 Delta R.T.: -0.002 min
 Response: 24013121
 Conc: 568.40 ng/ml



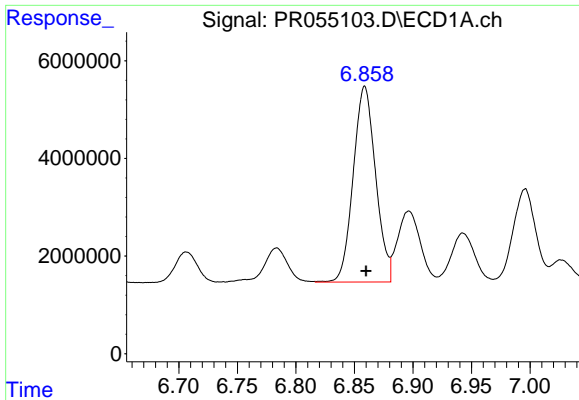
#31 AR-1260-1

R.T.: 6.576 min
 Delta R.T.: -0.002 min
 Response: 46072163
 Conc: 529.12 ng/ml



#31 AR-1260-1

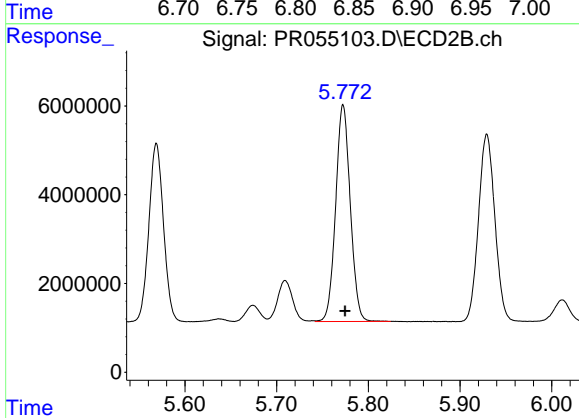
R.T.: 5.569 min
 Delta R.T.: -0.002 min
 Response: 44622067
 Conc: 564.59 ng/ml



#32 AR-1260-2

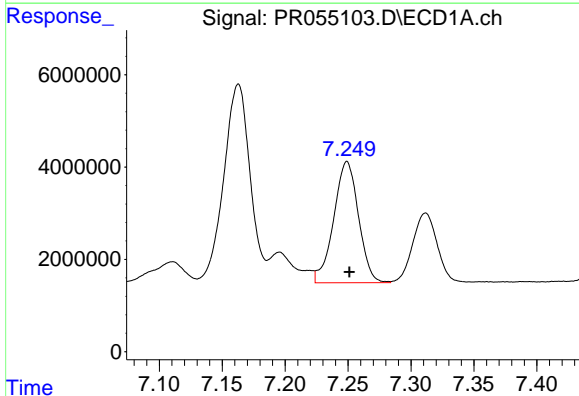
R.T.: 6.859 min
 Delta R.T.: -0.001 min
 Response: 53362194
 Conc: 532.68 ng/ml

Instrument :
 ECD_R
 ClientSampleId :
 AR1660CCC500



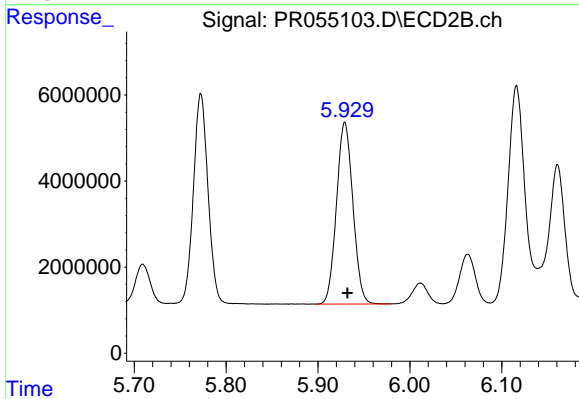
#32 AR-1260-2

R.T.: 5.773 min
 Delta R.T.: -0.002 min
 Response: 54105420
 Conc: 574.11 ng/ml



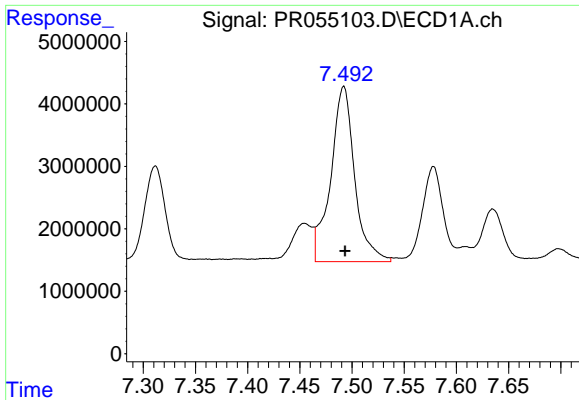
#33 AR-1260-3

R.T.: 7.249 min
 Delta R.T.: -0.002 min
 Response: 36115066
 Conc: 538.09 ng/ml



#33 AR-1260-3

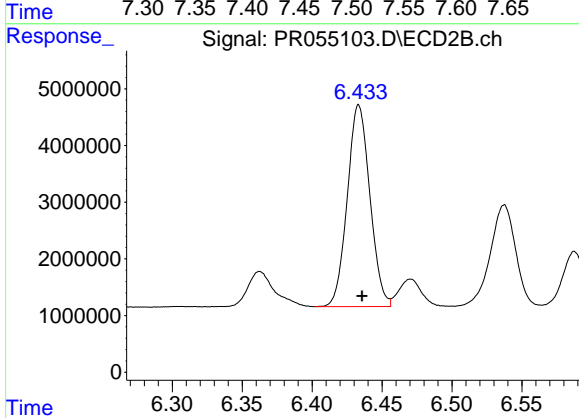
R.T.: 5.929 min
 Delta R.T.: -0.003 min
 Response: 52394044
 Conc: 586.77 ng/ml



#34 AR-1260-4

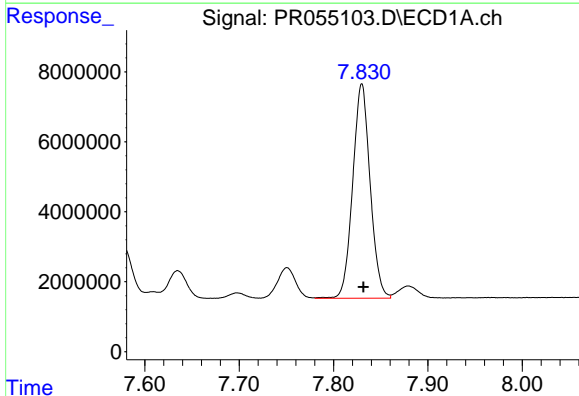
R.T.: 7.492 min
 Delta R.T.: -0.001 min
 Response: 44617508
 Conc: 554.53 ng/ml

Instrument :
 ECD_R
 ClientSampleId :
 AR1660CCC500



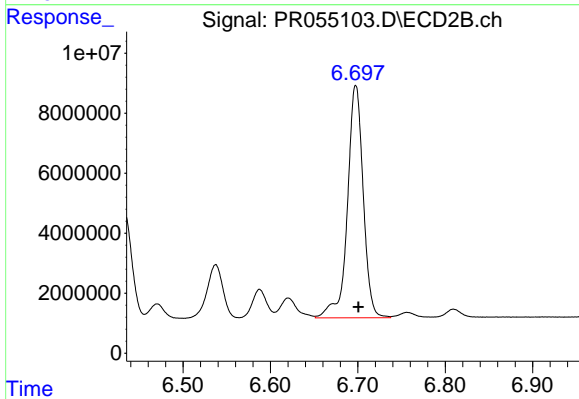
#34 AR-1260-4

R.T.: 6.433 min
 Delta R.T.: -0.002 min
 Response: 40009301
 Conc: 581.25 ng/ml



#35 AR-1260-5

R.T.: 7.830 min
 Delta R.T.: -0.002 min
 Response: 78632681
 Conc: 513.36 ng/ml



#35 AR-1260-5

R.T.: 6.698 min
 Delta R.T.: -0.003 min
 Response: 97457617
 Conc: 594.05 ng/ml